

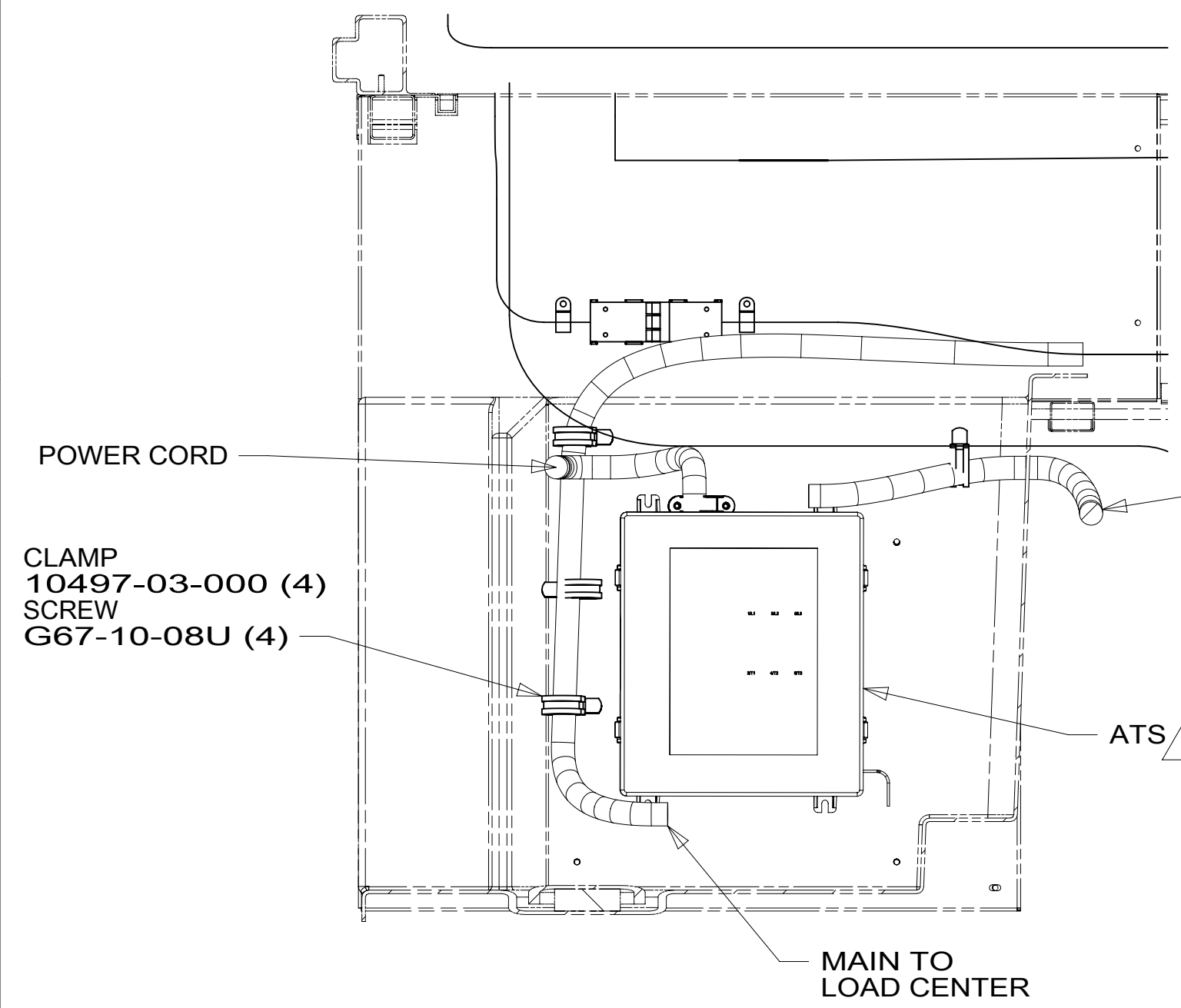
8 7 6 5 4 3 2 1

D

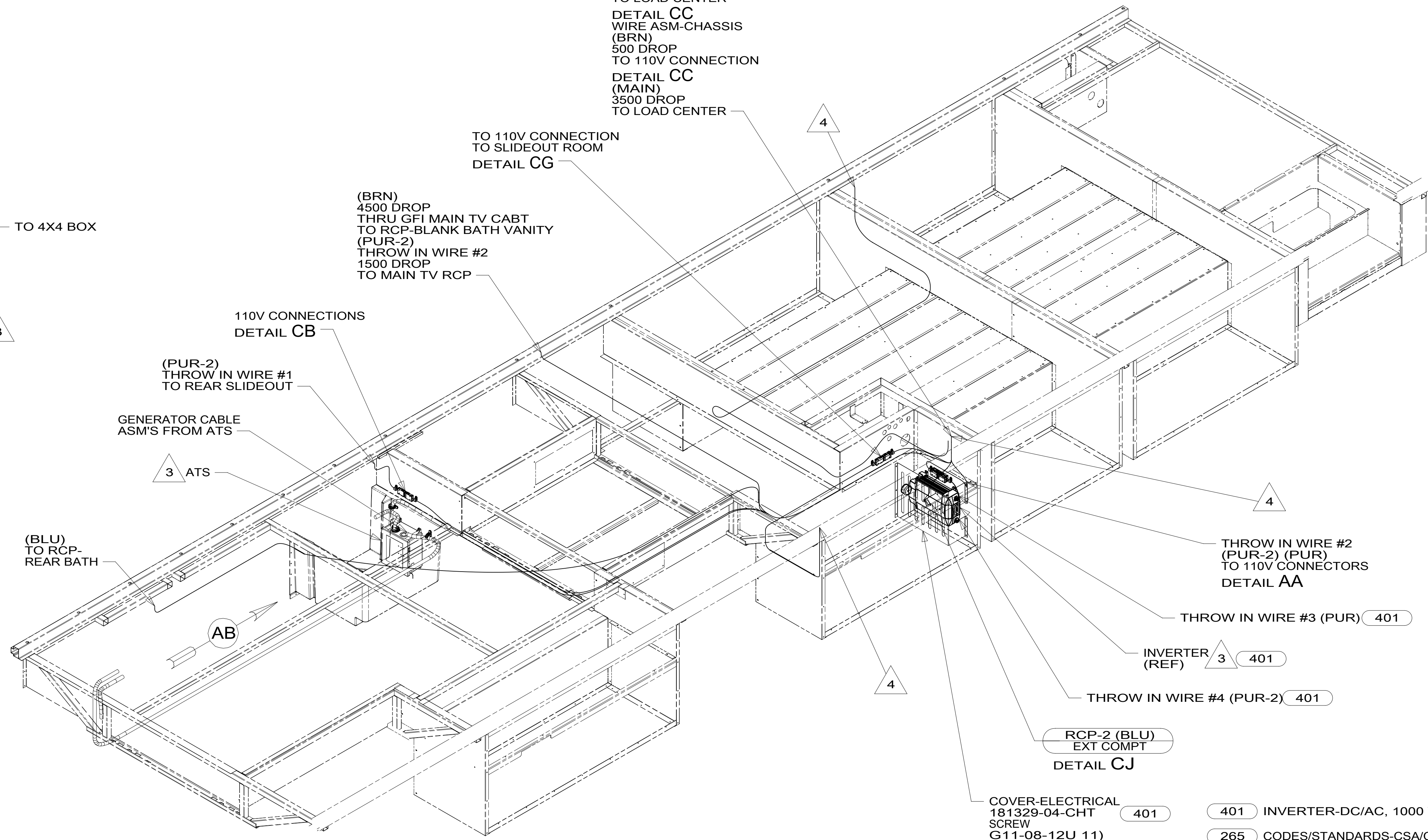
C

B

A



VIEW AB



(PUR)  
4000 DROP  
TO LOAD CENTER  
(PUR-2)  
THROW IN WIRE #2  
8000 DROP  
THRU RCP-BLANKS  
TO RCP-MAIN TV  
DETAIL CH  
(BRN)  
4000 DROP  
THRU RCP-BLANK  
TO LOAD CENTER  
DETAIL CC  
WIRE ASM-CHASSIS  
(BRN)  
500 DROP  
TO 110V CONNECTION  
DETAIL CC  
(MAIN)  
3500 DROP  
TO LOAD CENTER

(BRN)  
4500 DROP  
THRU GFI MAIN TV CABT  
TO RCP-BLANK BATH VANITY  
(PUR-2)  
THROW IN WIRE #2  
1500 DROP  
TO MAIN TV RCP

110V CONNECTIONS  
DETAIL CB

(PUR-2)  
THROW IN WIRE #1  
TO REAR SLIDEOUT

GENERATOR CABLE  
ASM'S FROM ATS

(BLU)  
TO RCP-  
REAR BATH

THROW IN WIRE #2  
(PUR-2) (PUR)  
TO 110V CONNECTORS  
DETAIL AA

THROW IN WIRE #3 (PUR) 401

INVERTER  
(REF) 3 401

THROW IN WIRE #4 (PUR-2) 401

RCP-2 (BLU)  
EXT COMPT  
DETAIL CJ

COVER-ELECTRICAL  
181329-04-CHT  
SCREW  
G11-08-12U 11) 401

- 401 INVERTER-DC/AC, 1000 WATT
- 265 CODES/STANDARDS-CSA/CMVSS
- 1B1 CODES/STANDARDS USA

1B1 265

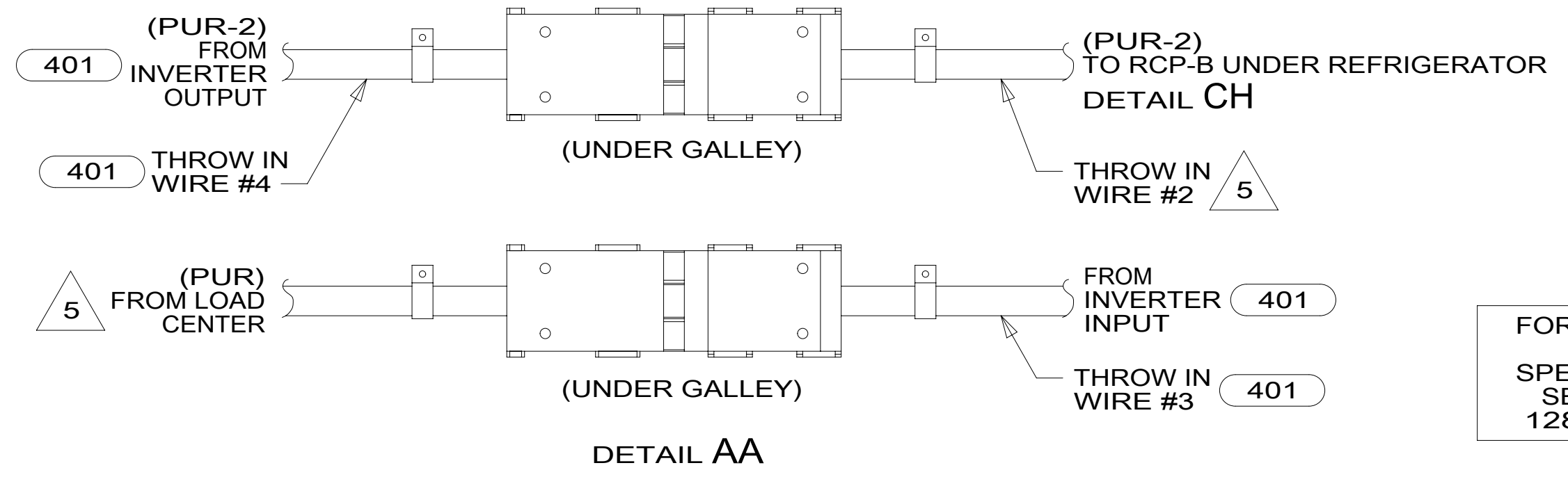


DSNR:		ALL DIMENSIONS ARE IN MILLIMETERS
DFFR:		
UNSPECIFIED TOLERANCES:		MATERIAL:
WHOLE DIM (X)	3	
ONE-PLACE (X.X)	1.5	
TWO-PLACE (X.XX)	0.50	
ANGLE	1°	
REFER TO ES0018 FOR FASTENER TIGHTENING GUIDELINES	WEIGHT: (LBS)	FIRST USED:
		17 E35B

**WIRING INSTL-BODY, 110V**

SHEET:	ITEM/PART NO.:	REV:
1 OF 5	000015234 / 31284801000	

- 5 WITHOUT INVERTER THROW IN #2 (PUR-2) CONNECTS TO (PUR) FROM LOAD CENTER.
- 4 WIRE ROUTED THROUGH FLOOR IN THIS AREA.
- 3 SEE LOAD CENTER/ATS ASM FOR ADDITIONAL INFORMATION.



DETAIL AA

FOR ELECTRICAL TORQUE SPECIFICATIONS SEE DWG NO. 128783-01-000

FOR ELECTRICAL CALLOUTS SEE DWG NO. 121339-01-000

NOTES:

- 2. WIRES ROUTED UNDER FLOOR.
- 1. AT MINIMUM ALL WIRES TO BE SUPPORTED AND SECURED PER CODE REQUIREMENTS. USE CLAMP 10495 OR 10497 OR WIRE TIE 8343 OR 108046 AND SCREW G67-XX-XXX OR G56-XX-XXX AS APPROPRIATE FOR INSTALLATION.

8 7 6 5 4 3 2 1

D

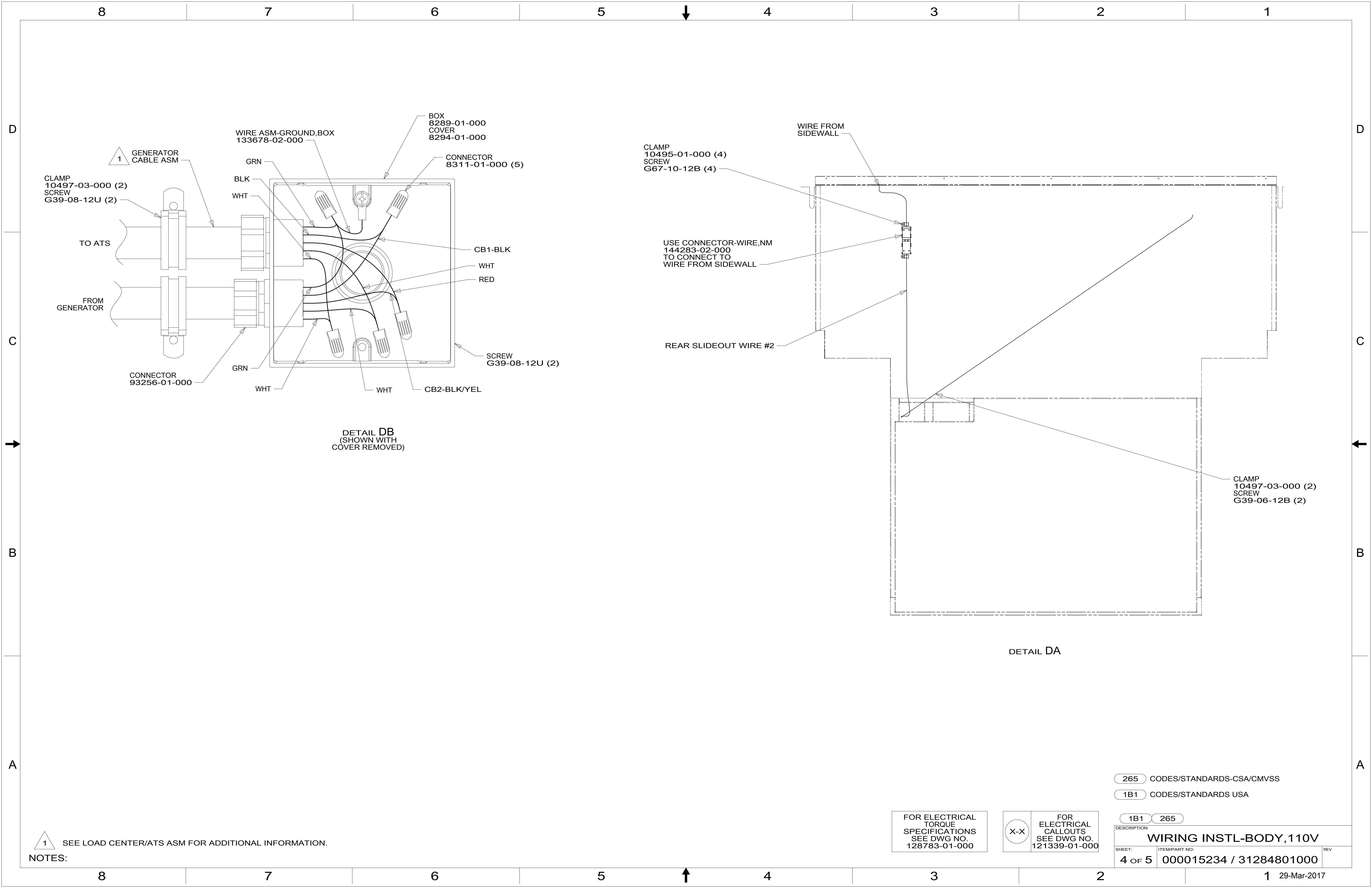
C

B

A







CLAMP  
10497-03-000 (2)  
SCREW  
G39-08-12U (2)

TO ATS

FROM GENERATOR

1 GENERATOR CABLE ASM

WIRE ASM-GROUND,BOX  
133678-02-000

GRN  
BLK  
WHT

BOX  
8289-01-000  
COVER  
8294-01-000

CONNECTOR  
8311-01-000 (5)

CB1-BLK  
WHT  
RED

CONNECTOR  
93256-01-000

GRN  
WHT

WHT  
WHT  
CB2-BLK/YEL

SCREW  
G39-08-12U (2)

DETAIL DB  
(SHOWN WITH COVER REMOVED)

CLAMP  
10495-01-000 (4)  
SCREW  
G67-10-12B (4)

WIRE FROM SIDEWALL

USE CONNECTOR-WIRE,NM  
144283-02-000  
TO CONNECT TO WIRE FROM SIDEWALL

REAR SLIDEOUT WIRE #2

CLAMP  
10497-03-000 (2)  
SCREW  
G39-06-12B (2)

DETAIL DA

1 SEE LOAD CENTER/ATS ASM FOR ADDITIONAL INFORMATION.

NOTES:

265 CODES/STANDARDS-CSA/CMVSS

1B1 CODES/STANDARDS USA

1B1 265

FOR ELECTRICAL TORQUE SPECIFICATIONS SEE DWG NO. 128783-01-000

FOR ELECTRICAL CALLOUTS SEE DWG NO. 121339-01-000

DESCRIPTION:  
**WIRING INSTL-BODY, 110V**

SHEET: 4 OF 5 ITEM/PART NO.: 000015234 / 31284801000 REV

1 29-Mar-2017

