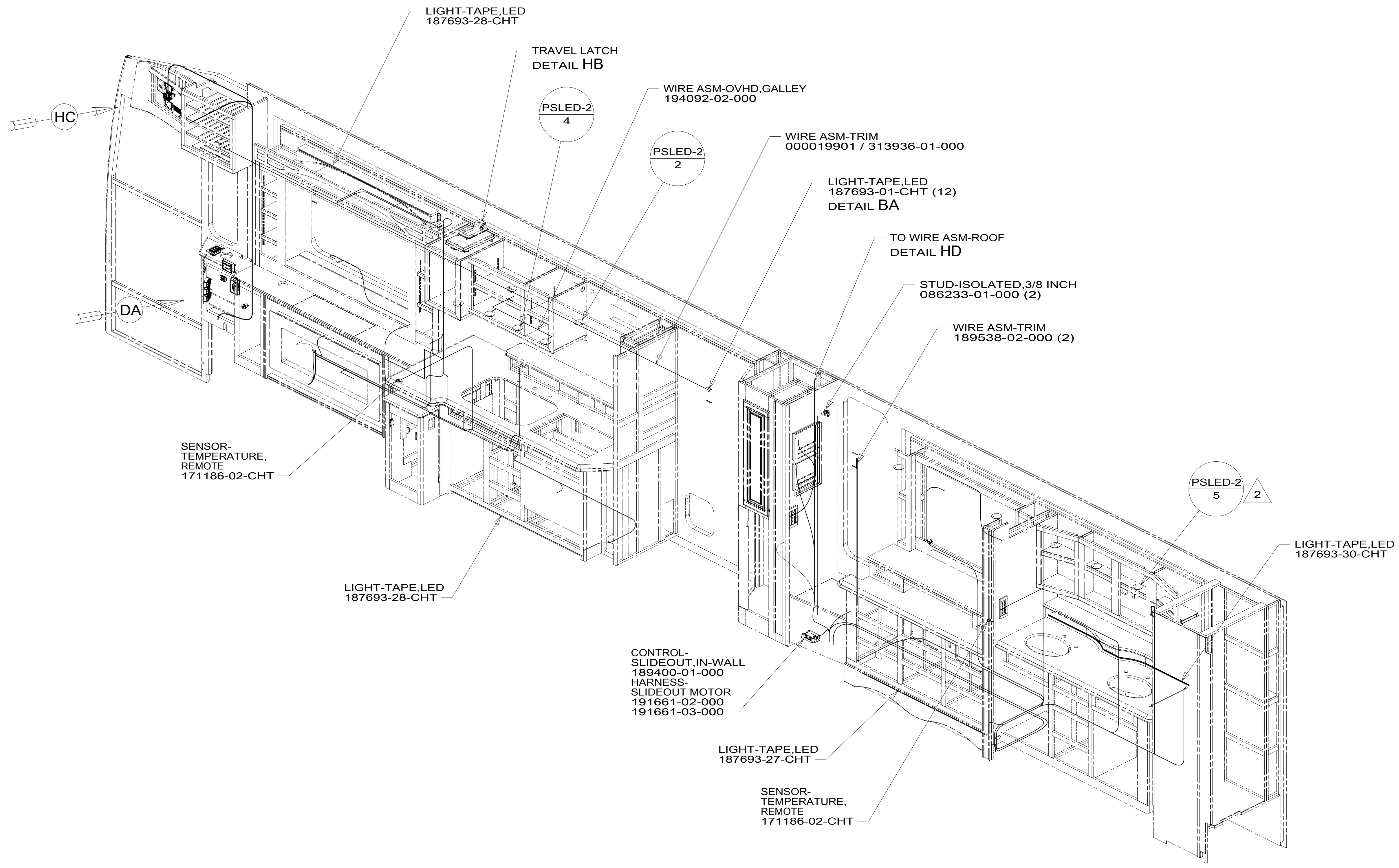


8 7 6 5 4 3 2 1

D  
C  
B  
A



2 LOCATED IN SLIDEOUT ROOF.

1. AT MINIMUM ALL WIRES TO BE SUPPORTED AND SECURED PER CODE REQUIREMENTS. USE CLAMP 10495 OR 10497 OR WIRE TIE 8343 OR 108046 AND SCREW G67-XX-XXX OR G56-XX-XXX AS APPROPRIATE FOR INSTALLATION.

NOTES:

FOR ELECTRICAL TORQUE SPECIFICATIONS SEE DWG NO. 128783-01-000

FOR ELECTRICAL CALLOUTS SEE DWG NO. 121339-01-000

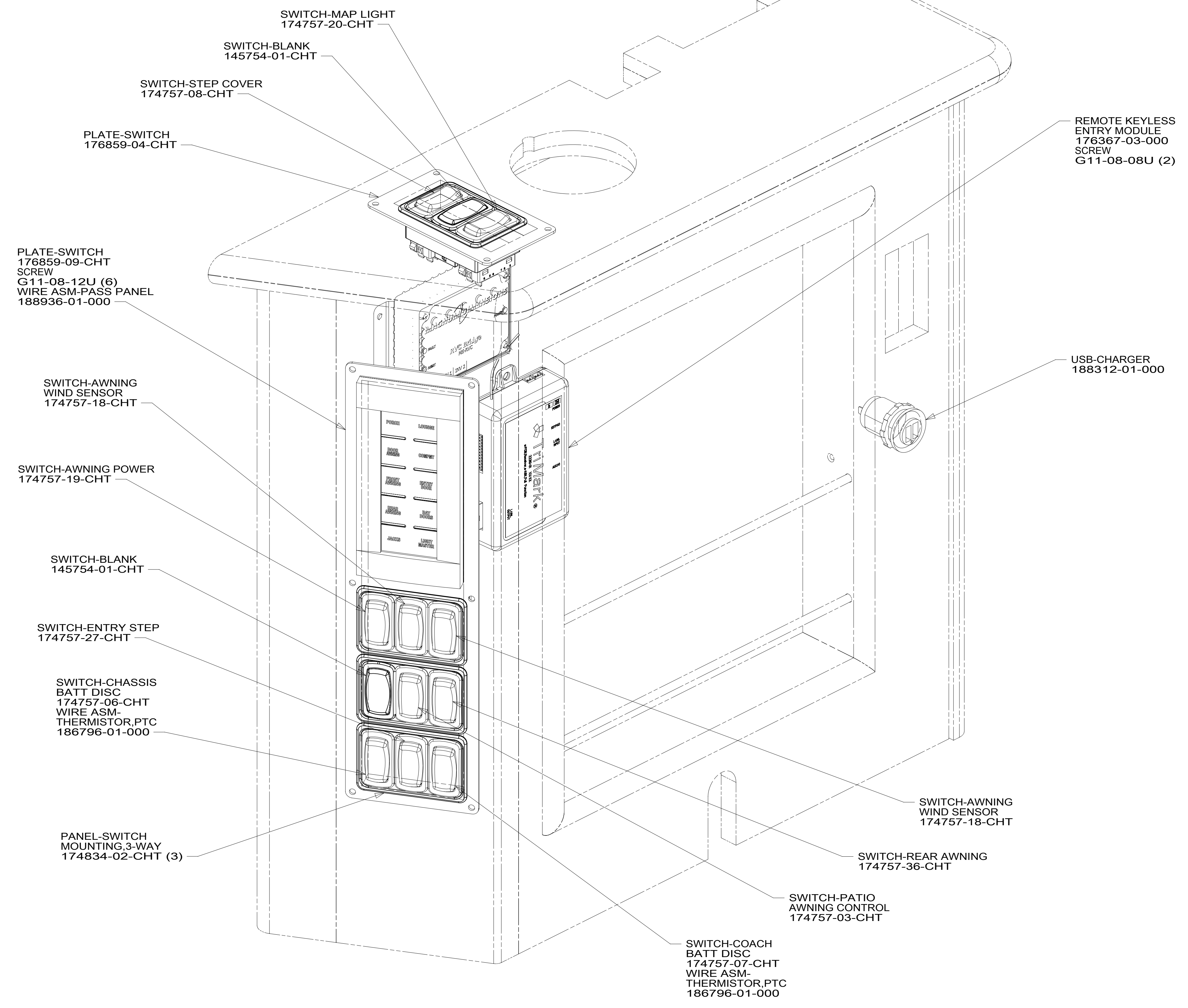
265 CODES/STANDARDS-CSA/CMVSS  
1B1 CODES/STANDARDS USA

1B1 265	
DESCRIPTION: <b>WIRING INSTL-BODY, 12V</b>	
SHEET: 3 OF 9	ITEM/PART NO: 000014505 / 31279501000
REV 1 04-Jan-2017	

8 7 6 5 4 3 2 1

8 7 6 5 4 3 2 1

D  
C  
B  
A



1. AT MINIMUM ALL WIRES TO BE SUPPORTED AND SECURED PER CODE REQUIREMENTS. USE CLAMP 10495 OR 10497 OR WIRE TIE 8343 OR 108046 AND SCREW G67-XX-XXX OR G56-XX-XXX AS APPROPRIATE FOR INSTALLATION.

NOTES:

DETAIL DA

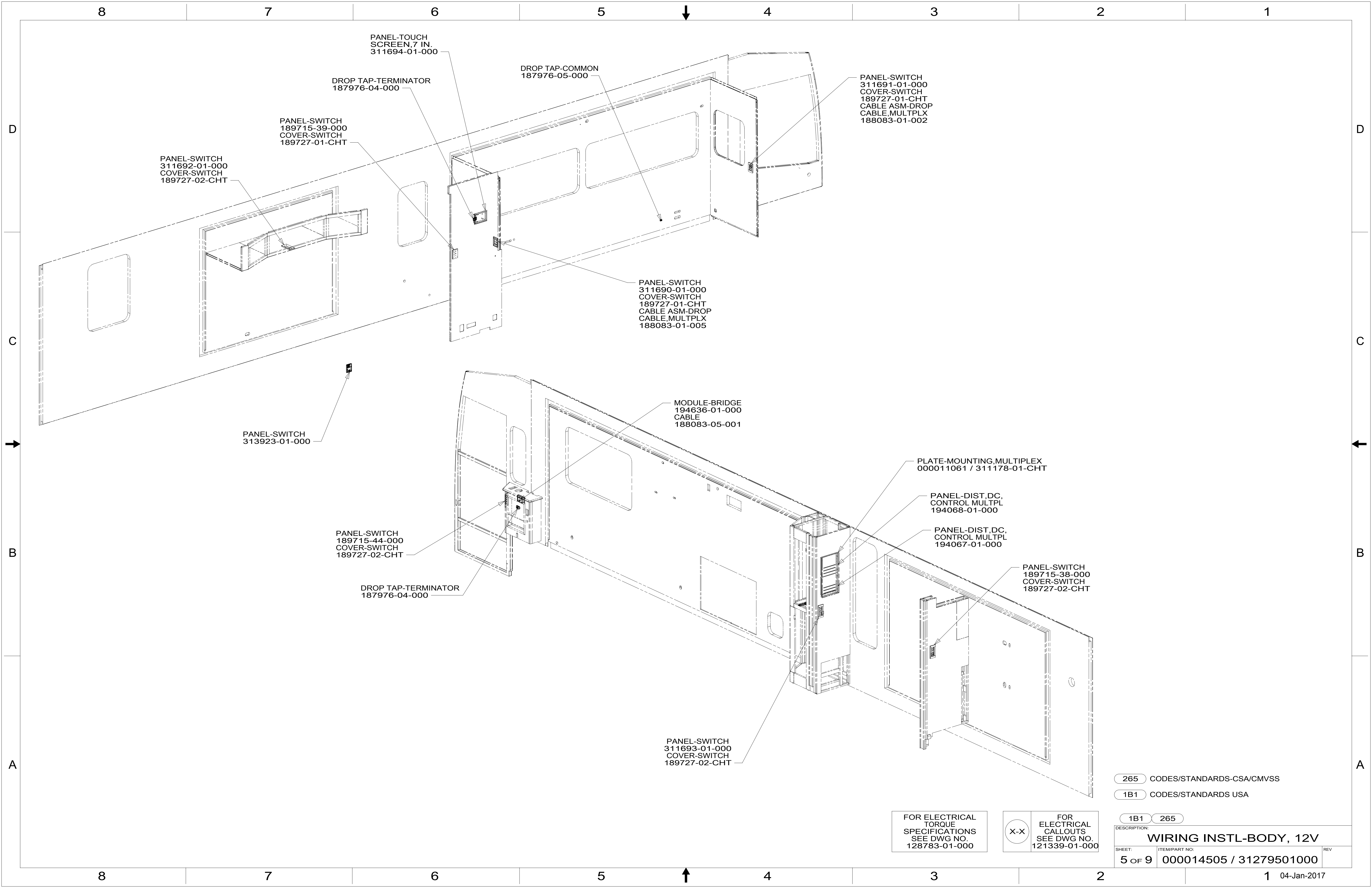
FOR ELECTRICAL TORQUE SPECIFICATIONS SEE DWG NO. 128783-01-000

FOR ELECTRICAL CALLOUTS SEE DWG NO. 121339-01-000

265 CODES/STANDARDS-CSA/CMVSS  
1B1 CODES/STANDARDS USA

DESCRIPTION:	1B1 265	
<b>WIRING INSTL-BODY, 12V</b>		
SHEET:	ITEM/PART NO:	REV
4 OF 9	000014505 / 31279501000	

8 7 6 5 4 3 2 1 04-Jan-2017



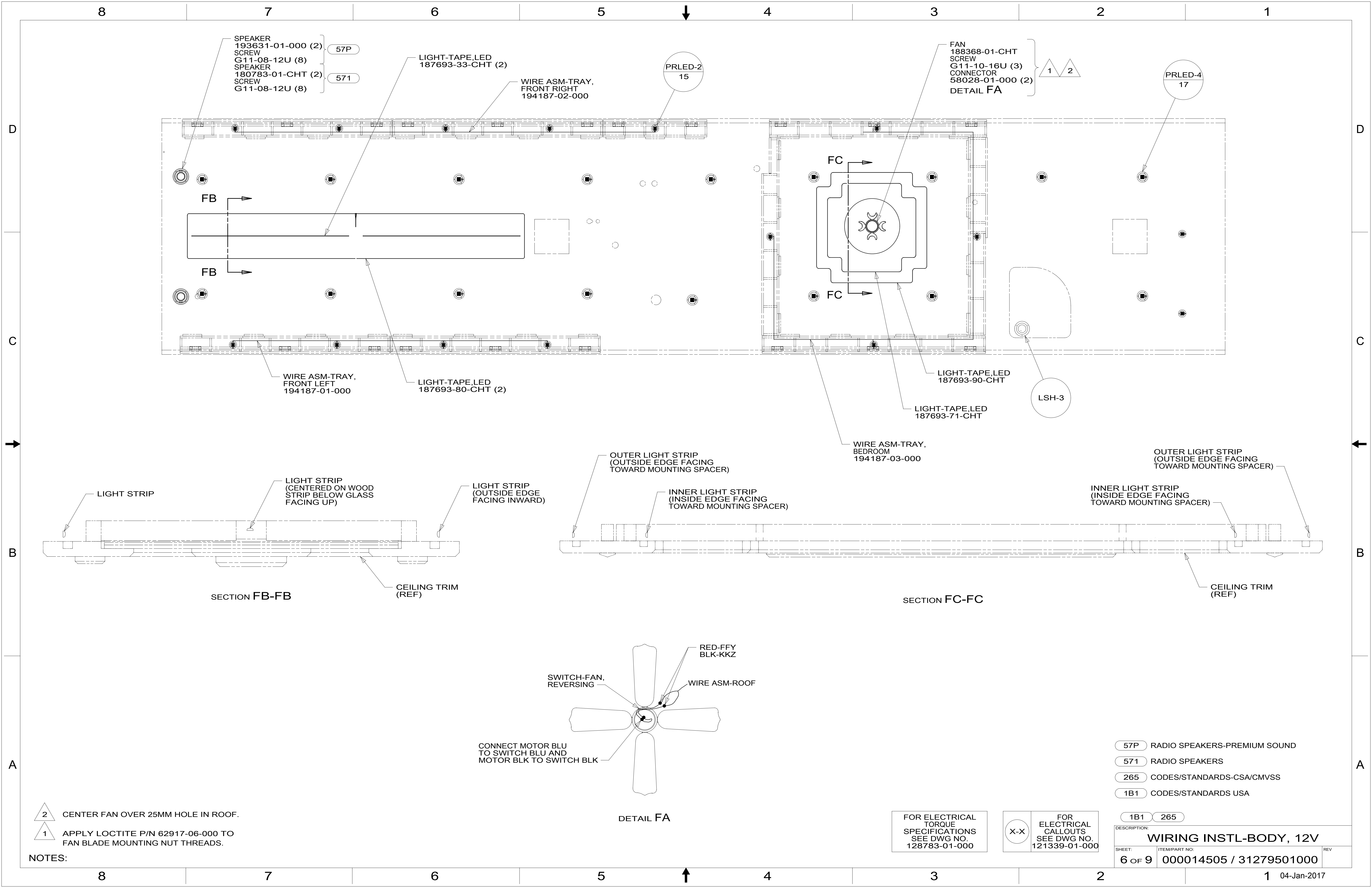
265 CODES/STANDARDS-CSA/CMVSS  
 1B1 CODES/STANDARDS USA

FOR ELECTRICAL TORQUE SPECIFICATIONS SEE DWG NO. 128783-01-000

X-X

FOR ELECTRICAL CALLOUTS SEE DWG NO. 121339-01-000

DESCRIPTION:	1B1 265	
<b>WIRING INSTL-BODY, 12V</b>		
SHEET:	ITEM/PART NO.:	REV
5 OF 9	000014505 / 31279501000	



SPEAKER  
193631-01-000 (2)  
SCREW  
G11-08-12U (8)  
SPEAKER  
180783-01-CHT (2)  
SCREW  
G11-08-12U (8)

LIGHT-TAPE,LED  
187693-33-CHT (2)

WIRE ASM-TRAY,  
FRONT RIGHT  
194187-02-000

FAN  
188368-01-CHT  
SCREW  
G11-10-16U (3)  
CONNECTOR  
58028-01-000 (2)  
DETAIL FA

FB  
FB

WIRE ASM-TRAY,  
FRONT LEFT  
194187-01-000

LIGHT-TAPE,LED  
187693-80-CHT (2)

FC  
FC

LIGHT-TAPE,LED  
187693-90-CHT

LIGHT-TAPE,LED  
187693-71-CHT

WIRE ASM-TRAY,  
BEDROOM  
194187-03-000

OUTER LIGHT STRIP  
(OUTSIDE EDGE FACING  
TOWARD MOUNTING SPACER)

INNER LIGHT STRIP  
(INSIDE EDGE FACING  
TOWARD MOUNTING SPACER)

OUTER LIGHT STRIP  
(OUTSIDE EDGE FACING  
TOWARD MOUNTING SPACER)

INNER LIGHT STRIP  
(INSIDE EDGE FACING  
TOWARD MOUNTING SPACER)

LIGHT STRIP

LIGHT STRIP  
(CENTERED ON WOOD  
STRIP BELOW GLASS  
FACING UP)

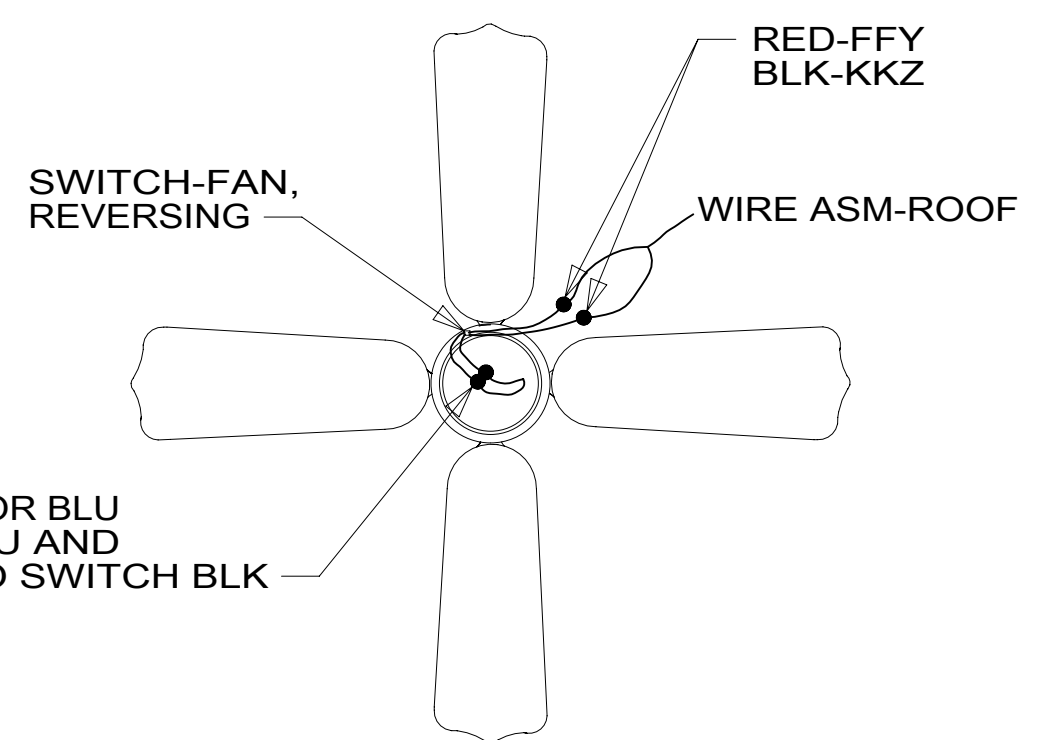
LIGHT STRIP  
(OUTSIDE EDGE  
FACING INWARD)

SECTION FB-FB

CEILING TRIM  
(REF)

SECTION FC-FC

CEILING TRIM  
(REF)



DETAIL FA

- 57P RADIO SPEAKERS-PREMIUM SOUND
- 571 RADIO SPEAKERS
- 265 CODES/STANDARDS-CSA/CMVSS
- 1B1 CODES/STANDARDS USA

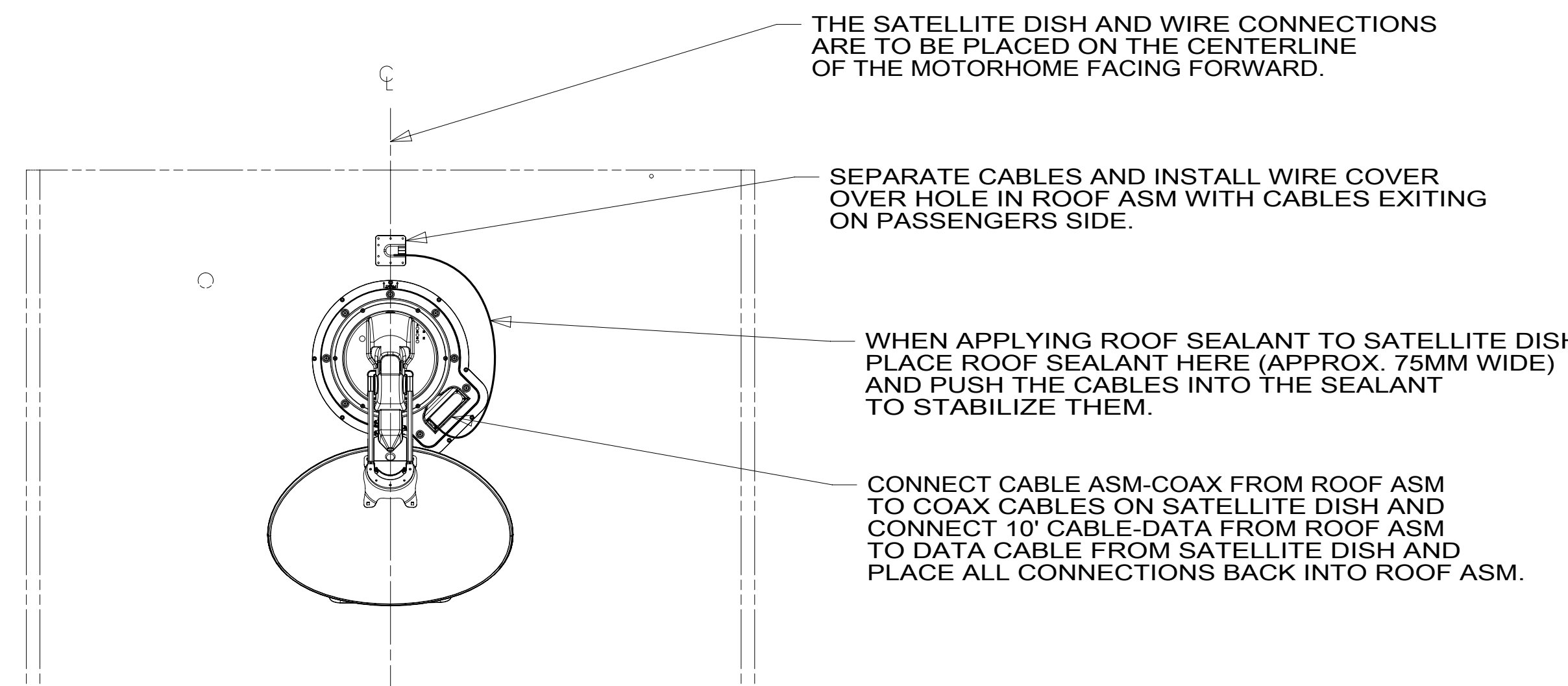
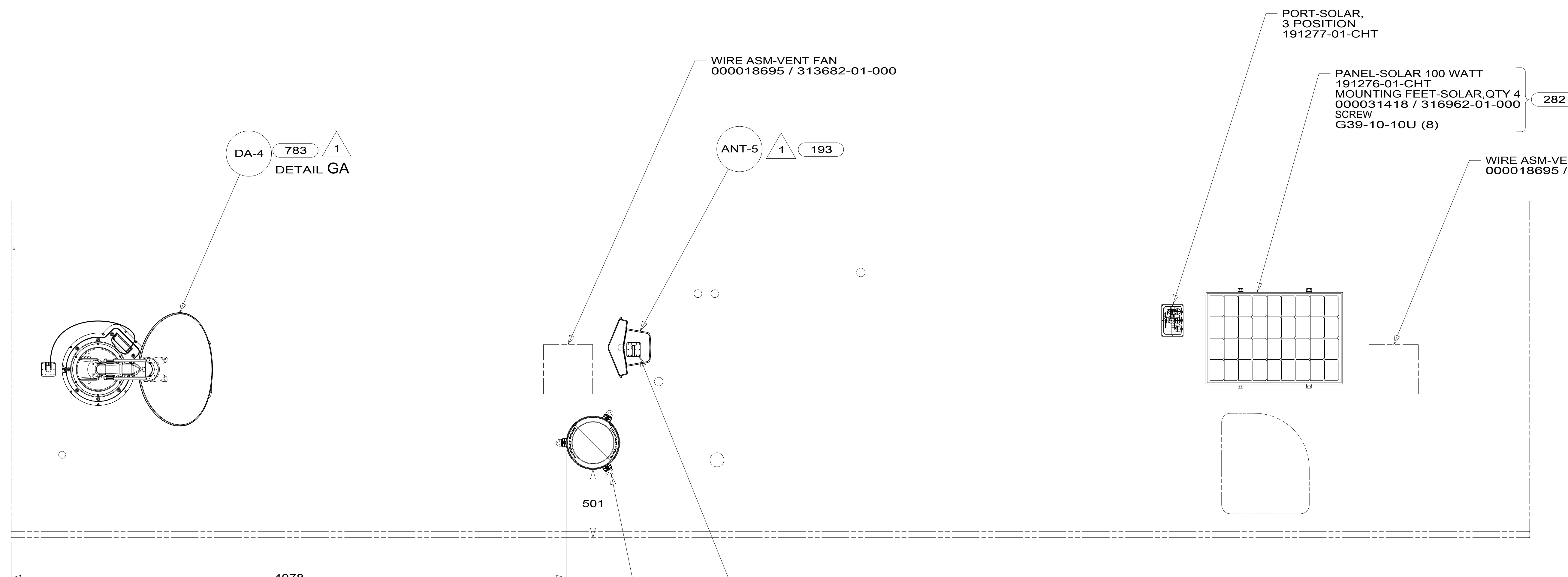
NOTES:  
2 CENTER FAN OVER 25MM HOLE IN ROOF.  
1 APPLY LOCTITE P/N 62917-06-000 TO  
FAN BLADE MOUNTING NUT THREADS.

FOR ELECTRICAL  
TORQUE  
SPECIFICATIONS  
SEE DWG NO.  
128783-01-000

FOR  
ELECTRICAL  
CALLOUTS  
SEE DWG NO.  
121339-01-000

DESCRIPTION:	1B1 265	
<b>WIRING INSTL-BODY, 12V</b>		
SHEET:	ITEM/PART NO.:	REV
6 OF 9	000014505 / 31279501000	

8 7 6 5 4 3 2 1



THE SATELLITE DISH AND WIRE CONNECTIONS ARE TO BE PLACED ON THE CENTERLINE OF THE MOTORHOME FACING FORWARD.

SEPARATE CABLES AND INSTALL WIRE COVER OVER HOLE IN ROOF ASM WITH CABLES EXITING ON PASSENGERS SIDE.

WHEN APPLYING ROOF SEALANT TO SATELLITE DISH, PLACE ROOF SEALANT HERE (APPROX. 75MM WIDE) AND PUSH THE CABLES INTO THE SEALANT TO STABILIZE THEM.

CONNECT CABLE ASM-COAX FROM ROOF ASM TO COAX CABLES ON SATELLITE DISH AND CONNECT 10' CABLE-DATA FROM ROOF ASM TO DATA CABLE FROM SATELLITE DISH AND PLACE ALL CONNECTIONS BACK INTO ROOF ASM.

DETAIL GA

- 196 TV ANT-AUTO,DIRECTIONAL AMPL
- 193 TV ANT-DIGITAL AMPLIFIED
- 783 SATELLITE HD TV SYSTEM AUTOC
- 282 SOLAR PANEL - 100 WATT
- 265 CODES/STANDARDS-CSA/CMVSS
- 1B1 CODES/STANDARDS USA

1 SEE MANUFACTURER'S INSTALLATION FOR ADDITIONAL INFORMATION.

FOR ELECTRICAL TORQUE SPECIFICATIONS SEE DWG NO. 128783-01-000

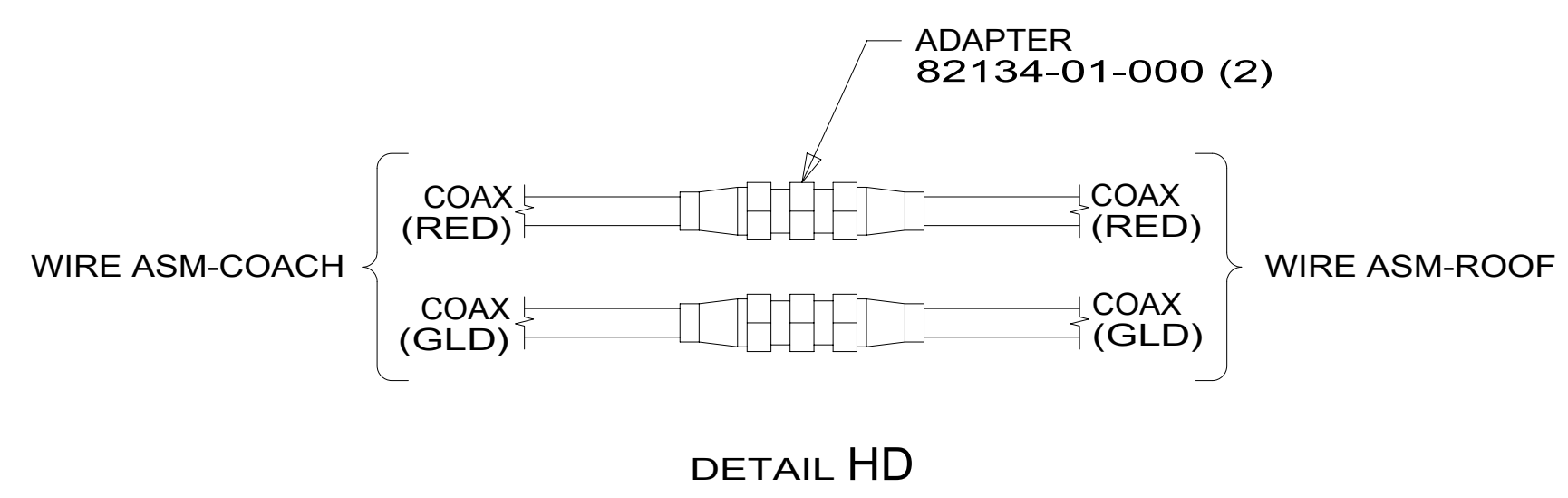
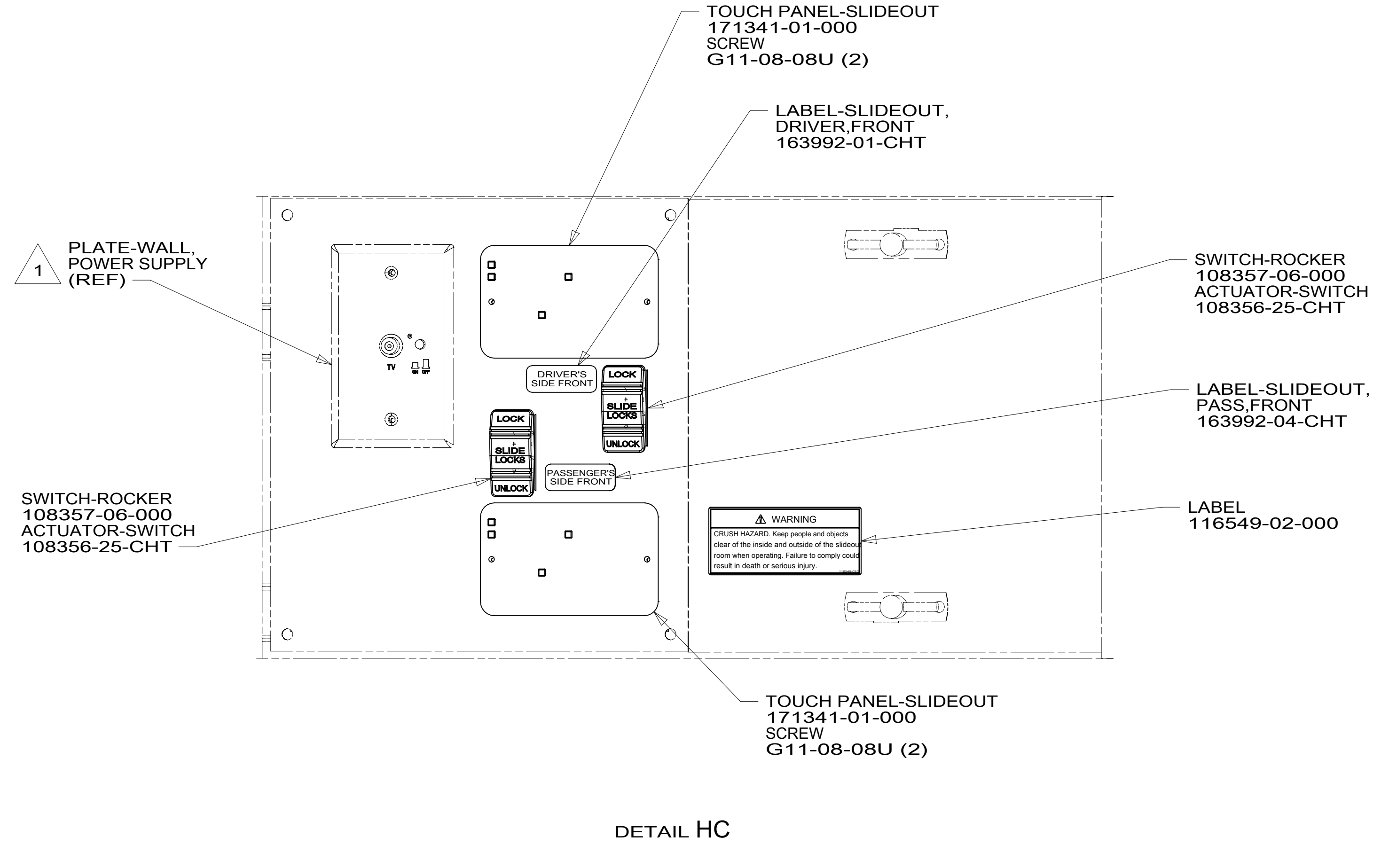
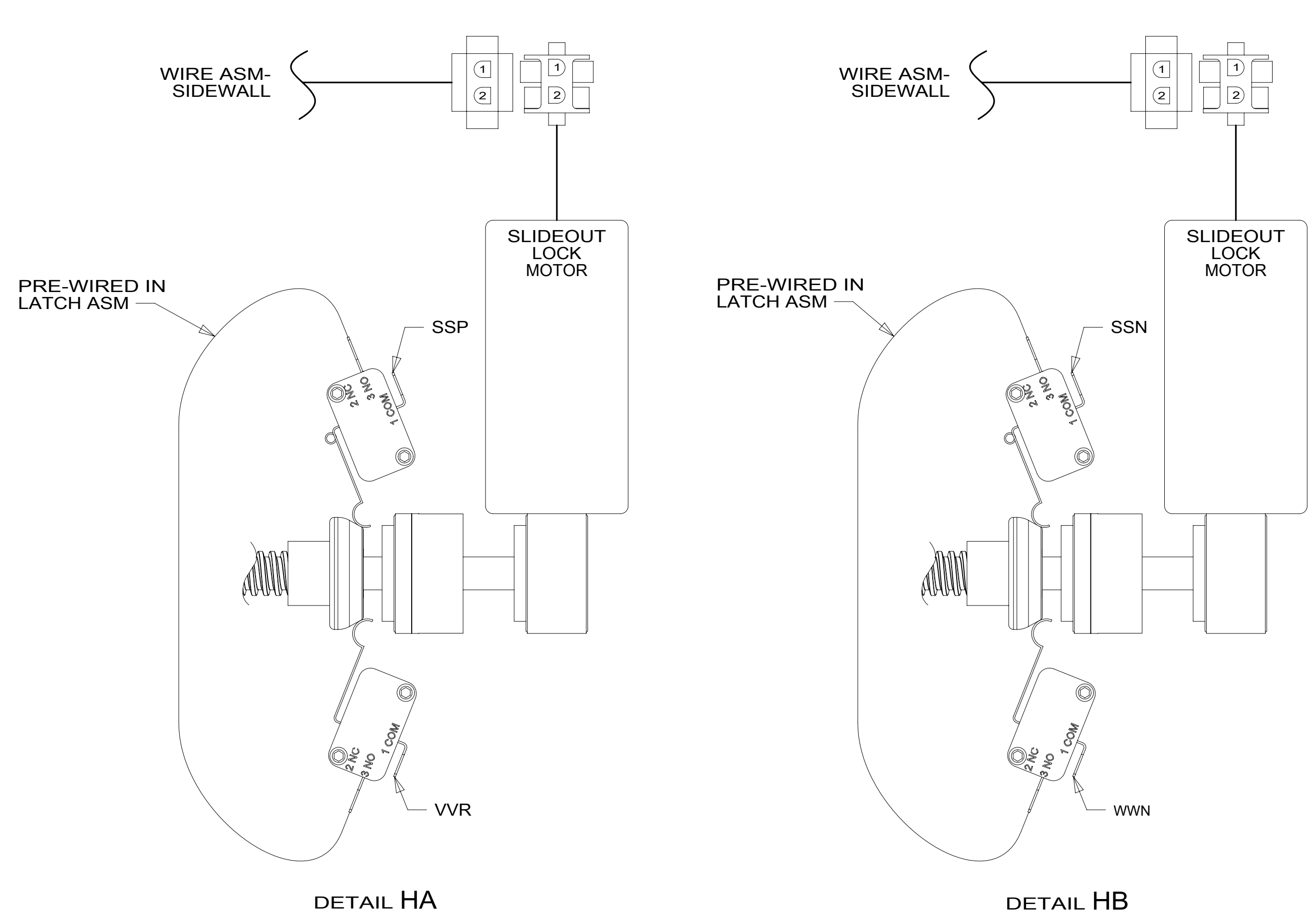
FOR ELECTRICAL CALLOUTS SEE DWG NO. 121339-01-000

DESCRIPTION:	1B1 265	
<b>WIRING INSTL-BODY, 12V</b>		
SHEET:	ITEM/PART NO:	REV
7 OF 9	000014505 / 31279501000	

8 7 6 5 4 3 2 1

D

D



1 SEE WIRING INSTL-TV/DVD FOR ADDITIONAL INFORMATION.

NOTES:

FOR ELECTRICAL TORQUE SPECIFICATIONS SEE DWG NO. 128783-01-000

FOR ELECTRICAL CALLOUTS SEE DWG NO. 121339-01-000

265 CODES/STANDARDS-CSA/CMVSS

1B1 CODES/STANDARDS USA

DESCRIPTION:		1B1 265
<b>WIRING INSTL-BODY, 12V</b>		
SHEET:	ITEM/PART NO.:	REV
8 OF 9	000014505 / 31279501000	

8 7 6 5 4 3 2 1 04-Jan-2017



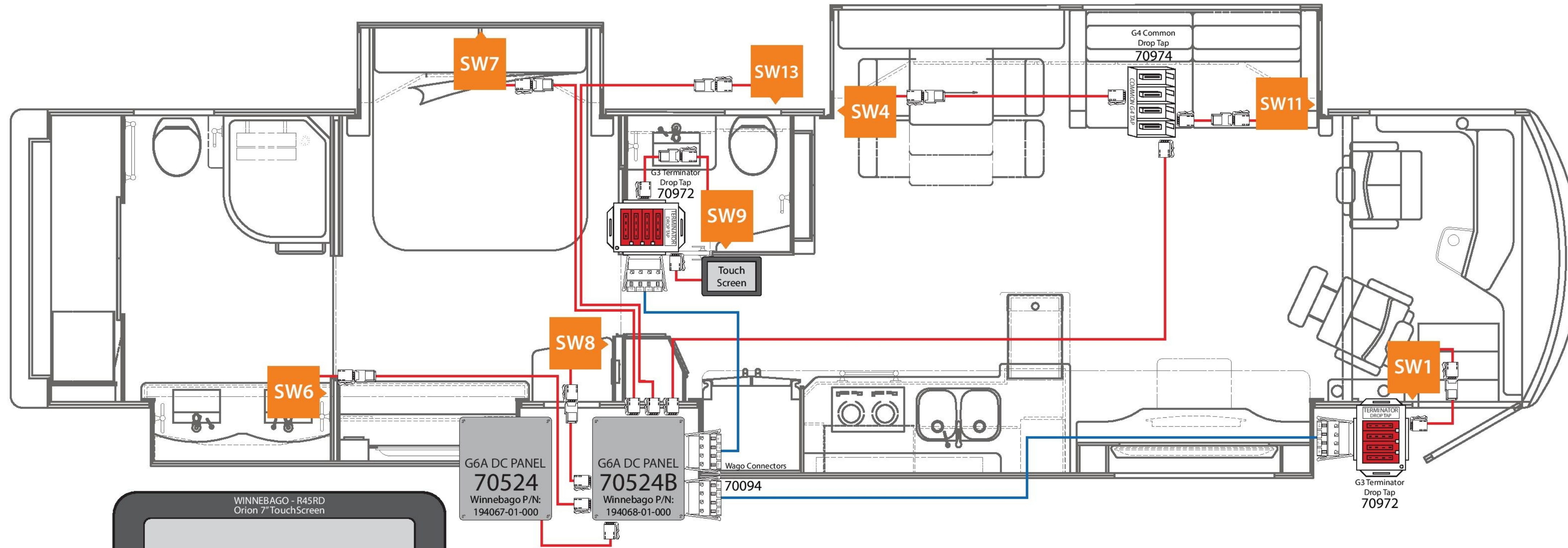
**WINNEBAGO - R45RD**  
 SSP-14 NETWORK WIRING DIAGRAM  
 SWITCH PANEL LAYOUT  
 REV 1v2 05/06/16

**Drop Cable Connections**



**NETWORK LEGEND**

- TRUNK CABLE —
- DROP CABLE —
- SWITCH POSITION ■



WINNEBAGO - R45RD  
Orion 7" TouchScreen

Thermostat	Eng Preheat Burner
Auto Generator Start	Burner Status
Energy Management	Engine Block Heater
Rear Slideouts (D/S RR, P/S RR)	Inverter Controls
Water Pump	Tank Levels (Fresh, Gry 1, Gry 2, Blk)
Aqua Hot Elec	

Firefly P/N: 55502A  
Winnebago P/N: 311694-01-000

WINNEBAGO - R45RD  
SW1 - ENTRY

27	PORCH	1
33	DOOR AWNING	25
34	FRONT AWNING	51
28	REAR AWNING	52
29	JACKS	53
37	DOOR AWNING	54
38	DOOR AWNING	

Firefly P/N: 90002  
Winnebago P/N: 189715-44-000

WINNEBAGO - R45RD  
SW4 - DINETTE

1	LOUNGE	2
3	FRONT TRAY	4
11	ACCENT	20

Firefly P/N: 90157  
Winnebago P/N: 311690-01-000

WINNEBAGO - R45RD  
SW6 - REAR BATH

15	MAKEUP	13
30	WATER PUMP	14
45	WATER PUMP	18
46	WATER PUMP	7
23	WARDROBE	26, 27

Firefly P/N: 90251  
Winnebago P/N: 189715-38-000

WINNEBAGO - R45RD  
SW7 - BED OVHD

5	LEFT OVHD	6
7	BEDROOM	8
58	ACCENT	49
59	ACCENT	50
12	ACCENT	47
18	PANEL LIGHTS	48

Firefly P/N: 90303  
Winnebago P/N: 311692-01-000

WINNEBAGO - R45RD  
SW8 - BEDROOM

49	BED LIFT	7
50	ACCENT	8
12	ACCENT	58
21	ACCENT	59
18	ACCENT	51, 53
	PANEL LIGHTS	52, 54

Firefly P/N: 90358  
Winnebago P/N: 311693-01-000

WINNEBAGO - R45RD  
SW9 - MID BATH

16	BATH	17
30	WATER PUMP	9
57	WATER PUMP	18

Firefly P/N: 90402  
Winnebago P/N: 189715-39-000

WINNEBAGO - R45RD  
SW11 - LOUNGE

1	LOUNGE	22
3	FRONT TRAY	4
11	ACCENT	31
	ACCENT	32

Firefly P/N: 90509  
Winnebago P/N: 311691-01-000

WINNEBAGO - R45RD  
SW13 - BAY

37	JACKS	53
38	JACKS	54
25	COMPMT	26
30	FRSH GRY1	47
	FRSH GRY2	48
	LPG	

Firefly P/N: 90556  
Winnebago P/N: 313923-01-000

265 CODES/STANDARDS-CSA/CMVSS

1B1 CODES/STANDARDS USA

1B1 265

FOR ELECTRICAL TORQUE SPECIFICATIONS SEE DWG NO. 128783-01-000

FOR ELECTRICAL CALLOUTS SEE DWG NO. 121339-01-000

DESCRIPTION:  
**WIRING INSTL-BODY, 12V**

SHEET: 9 OF 9 ITEM/PART NO: 000014505 / 31279501000 REV