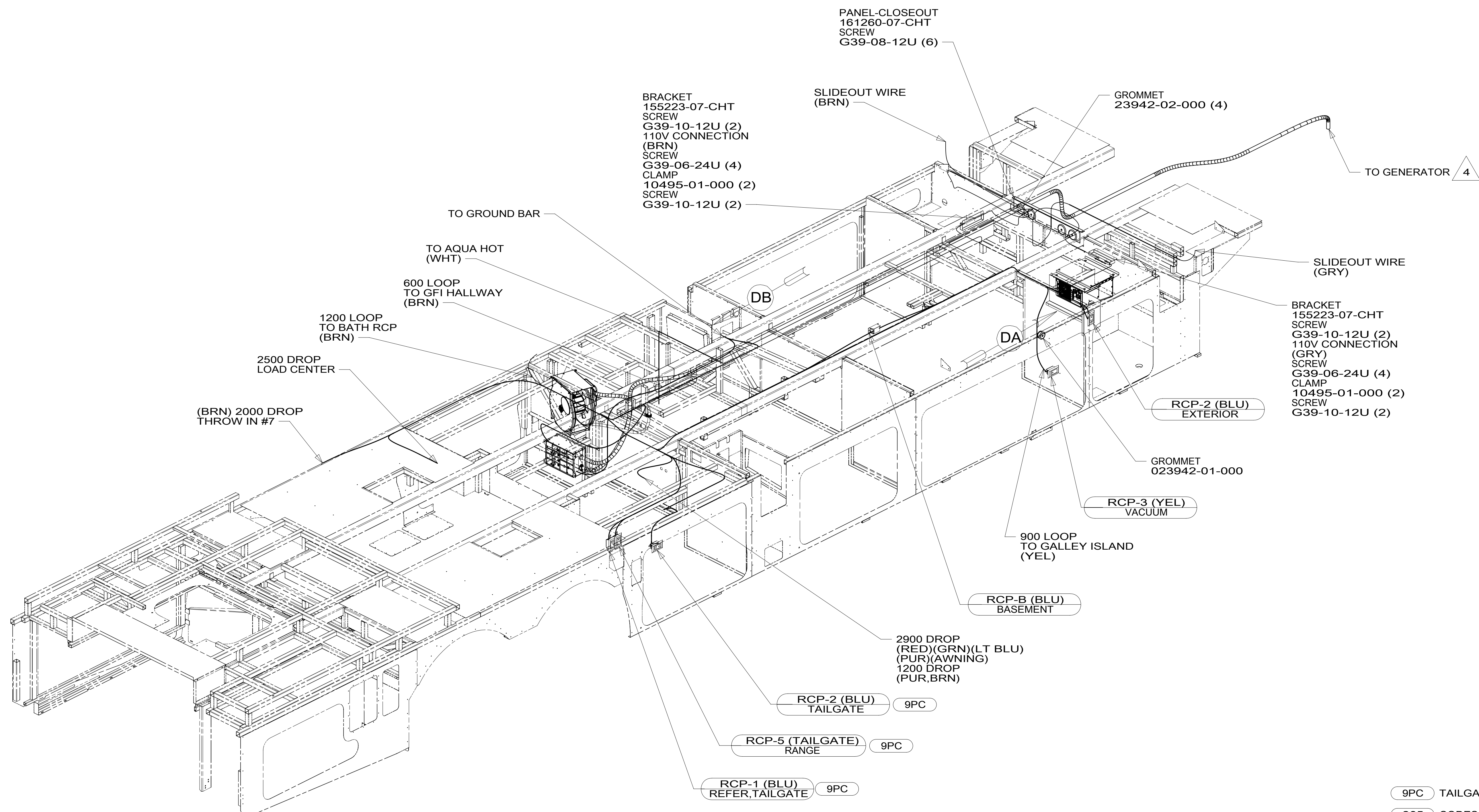


8 7 6 5 4 3 2 1

D  
C  
B  
A



- 4 SEE GENERATOR INSTL FOR ADDITIONAL INFORMATION.
3. WIRES THAT REST ON WIRE TRAYS ARE TO BE TIED DOWN WITH WIRE TIE 8343-04-000.
  2. CLAMP TO FLOOR SUPPORT TUBES AS NECESSARY WITH CLAMP 10497-01-000.
  1. AT MINIMUM ALL WIRES TO BE SUPPORTED AND SECURED PER CODE REQUIREMENTS. USE CLAMP 10495 OR 10497 OR WIRE TIE 8343 OR 108046 AND SCREW G67-XX-XXX OR G56-XX-XXX AS APPROPRIATE FOR INSTALLATION.

NOTES:

FOR ELECTRICAL TORQUE SPECIFICATIONS SEE DWG NO. 128783-01-000

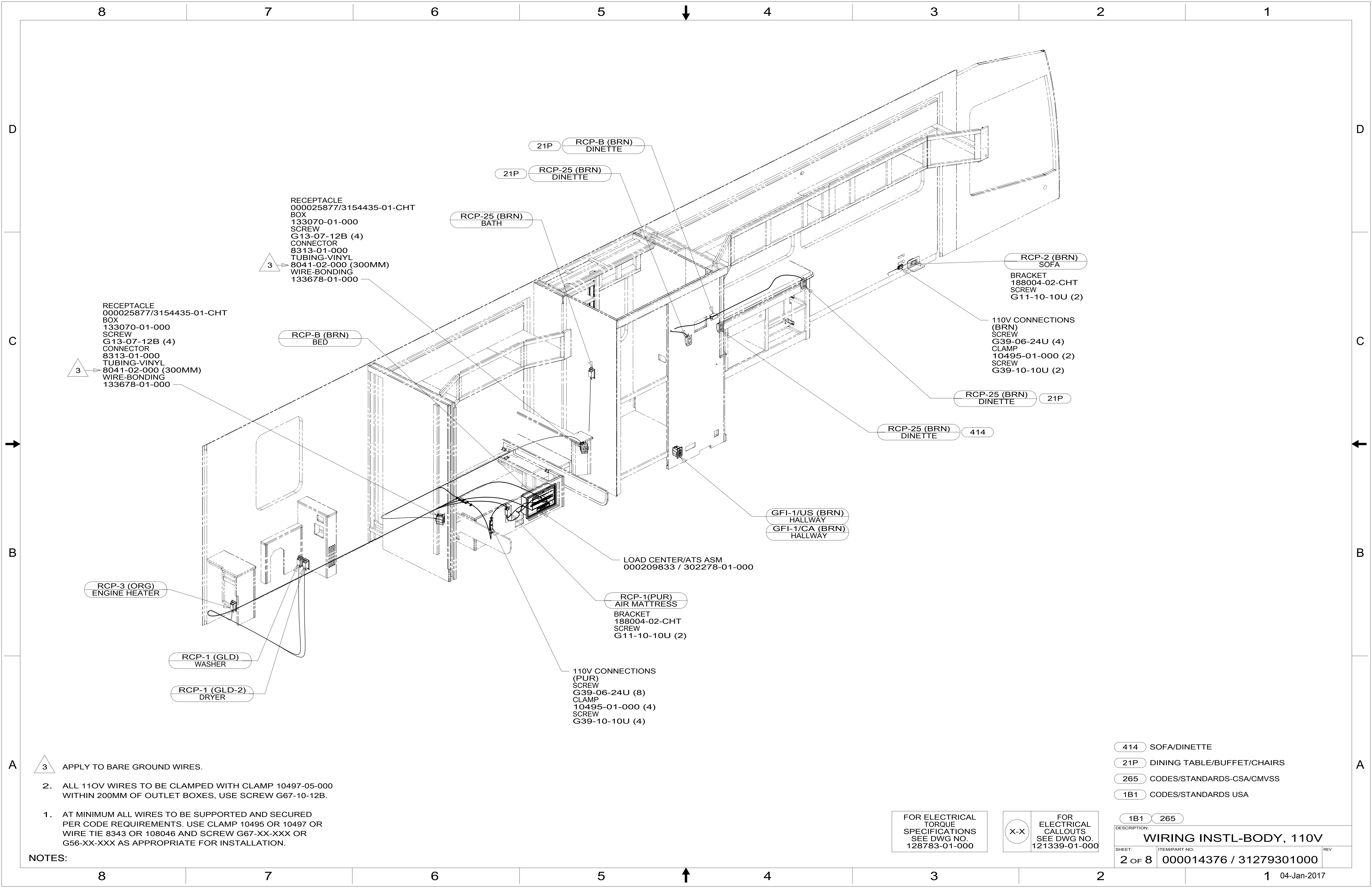
FOR ELECTRICAL CALLOUTS SEE DWG NO. 121339-01-000

- 9PC TAILGATE PACKAGE
- 265 CODES/STANDARDS-CSA/CMVSS
- 1B1 CODES/STANDARDS USA

**WINNEBAGO**  
COPYRIGHT 2016 WINNEBAGO INDUSTRIES, INC.

DSNR:	ALL DIMENSIONS ARE IN MILLIMETERS	
DIFFR:		
UNSPECIFIED TOLERANCES:	MATERIAL:	
WHOLE DIM (X) ± 3		
ONE-PLACE (X.X) ± 1.5		
TWO-PLACE (X.XX) ± 0.50		
ANGLE ± 1°		
REFER TO ES0018 FOR FASTENER TIGHTENING GUIDELINES	WEIGHT: (LBS)	FIRST USED: 17 R45RD
<b>WIRING INSTL-BODY, 110V</b>		
SHEET: 1 OF 8	ITEM/PART NO: 000014376 / 31279301000	REV
REF: 1		04-Jan-2017

8 7 6 5 4 3 2 1



RECEPTACLE  
000025877/3154435-01-CHT  
BOX  
133070-01-000  
SCREW  
G13-07-12B (4)  
CONNECTOR  
8313-01-000  
TUBING-VINYL  
8041-02-000 (300MM)  
WIRE-BONDING  
133678-01-000

RECEPTACLE  
000025877/3154435-01-CHT  
BOX  
133070-01-000  
SCREW  
G13-07-12B (4)  
CONNECTOR  
8313-01-000  
TUBING-VINYL  
8041-02-000 (300MM)  
WIRE-BONDING  
133678-01-000

RCP-25 (BRN)  
BATH

21P RCP-B (BRN)  
DINETTE

21P RCP-25 (BRN)  
DINETTE

RCP-2 (BRN)  
SOFA

BRACKET  
188004-02-CHT  
SCREW  
G11-10-10U (2)

110V CONNECTIONS  
(BRN)  
SCREW  
G39-06-24U (4)  
CLAMP  
10495-01-000 (2)  
SCREW  
G39-10-10U (2)

RCP-B (BRN)  
BED

RCP-25 (BRN)  
DINETTE 21P

RCP-25 (BRN)  
DINETTE 414

GFI-1/US (BRN)  
HALLWAY  
GFI-1/CA (BRN)  
HALLWAY

LOAD CENTER/ATS ASM  
000209833 / 302278-01-000

RCP-1(PUR)  
AIR MATTRESS  
BRACKET  
188004-02-CHT  
SCREW  
G11-10-10U (2)

110V CONNECTIONS  
(PUR)  
SCREW  
G39-06-24U (8)  
CLAMP  
10495-01-000 (4)  
SCREW  
G39-10-10U (4)

RCP-3 (ORG)  
ENGINE HEATER

RCP-1 (GLD)  
WASHER

RCP-1 (GLD-2)  
DRYER

3 APPLY TO BARE GROUND WIRES.

2. ALL 110V WIRES TO BE CLAMPED WITH CLAMP 10497-05-000 WITHIN 200MM OF OUTLET BOXES, USE SCREW G67-10-12B.

1. AT MINIMUM ALL WIRES TO BE SUPPORTED AND SECURED PER CODE REQUIREMENTS. USE CLAMP 10495 OR 10497 OR WIRE TIE 8343 OR 108046 AND SCREW G67-XX-XXX OR G56-XX-XXX AS APPROPRIATE FOR INSTALLATION.

NOTES:

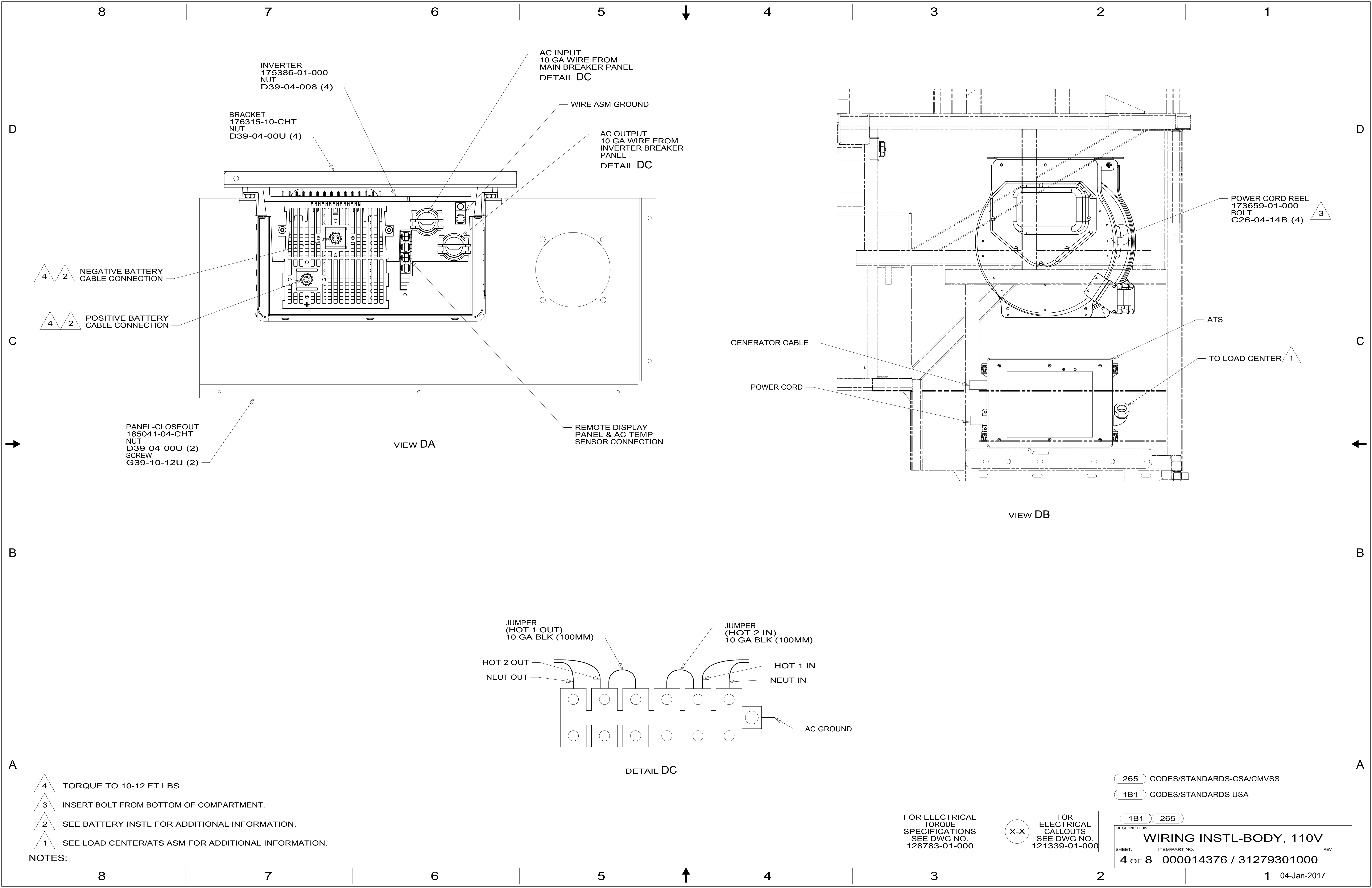
- 414 SOFA/DINETTE
- 21P DINING TABLE/BUFFET/CHAIRS
- 265 CODES/STANDARDS-CSA/CMVSS
- 1B1 CODES/STANDARDS USA

FOR ELECTRICAL  
TORQUE  
SPECIFICATIONS  
SEE DWG NO.  
128783-01-000

FOR ELECTRICAL  
CALLOUTS  
SEE DWG NO.  
121339-01-000

DESCRIPTION:	1B1 265	
<b>WIRING INSTL-BODY, 110V</b>		
SHEET:	ITEM/PART NO:	REV
2 OF 8	000014376 / 31279301000	





INVERTER  
175386-01-000  
NUT  
D39-04-008 (4)

BRACKET  
176315-10-CHT  
NUT  
D39-04-00U (4)

AC INPUT  
10 GA WIRE FROM  
MAIN BREAKER PANEL  
DETAIL DC

WIRE ASM-GROUND

AC OUTPUT  
10 GA WIRE FROM  
INVERTER BREAKER  
PANEL  
DETAIL DC

4 2  
NEGATIVE BATTERY  
CABLE CONNECTION

4 2  
POSITIVE BATTERY  
CABLE CONNECTION

PANEL-CLOSEOUT  
185041-04-CHT  
NUT  
D39-04-00U (2)  
SCREW  
G39-10-12U (2)

VIEW DA

REMOTE DISPLAY  
PANEL & AC TEMP  
SENSOR CONNECTION

POWER CORD REEL  
173659-01-000  
BOLT  
C26-04-14B (4)

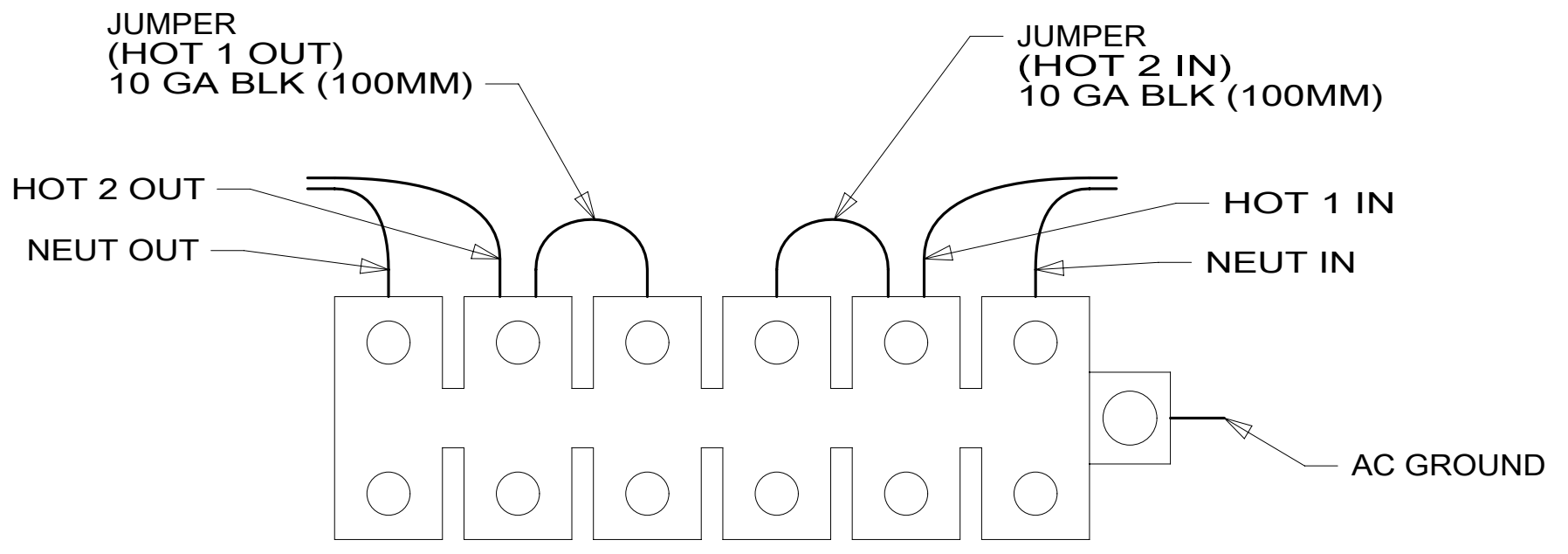
GENERATOR CABLE

POWER CORD

ATS

TO LOAD CENTER

VIEW DB



DETAIL DC

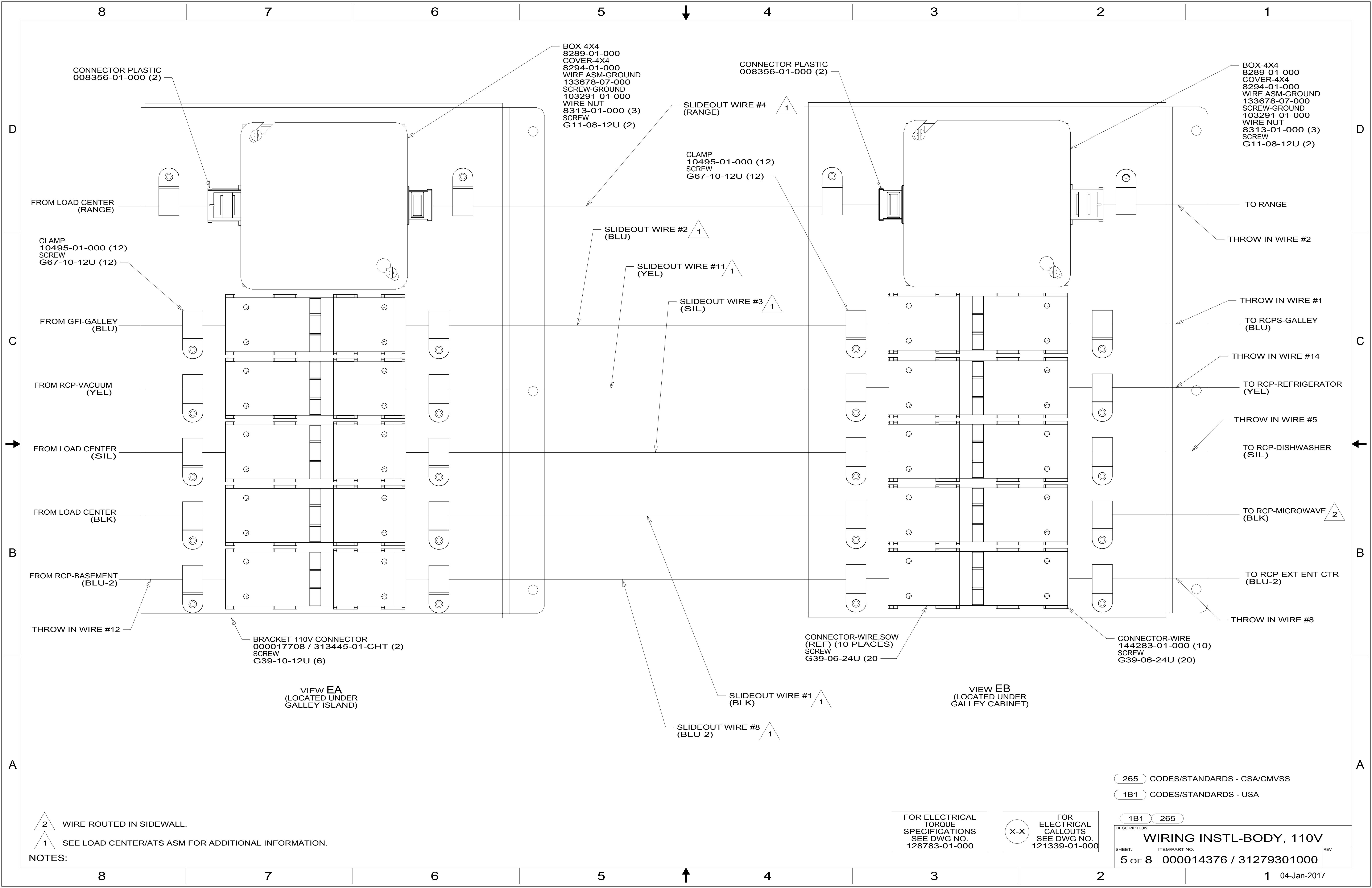
- NOTES:
- 4 TORQUE TO 10-12 FT LBS.
  - 3 INSERT BOLT FROM BOTTOM OF COMPARTMENT.
  - 2 SEE BATTERY INSTL FOR ADDITIONAL INFORMATION.
  - 1 SEE LOAD CENTER/ATS ASM FOR ADDITIONAL INFORMATION.

265 CODES/STANDARDS-CSA/CMVSS  
1B1 CODES/STANDARDS USA

FOR ELECTRICAL  
TORQUE  
SPECIFICATIONS  
SEE DWG NO.  
128783-01-000

FOR ELECTRICAL  
CALLOUTS  
SEE DWG NO.  
121339-01-000

DESCRIPTION:	
<b>WIRING INSTL-BODY, 110V</b>	
SHEET:	ITEM/PART NO.:
4 OF 8	000014376 / 31279301000
REV	



BOX-4X4  
8289-01-000  
COVER-4X4  
8294-01-000  
WIRE ASM-GROUND  
133678-07-000  
SCREW-GROUND  
103291-01-000  
WIRE NUT  
8313-01-000 (3)  
SCREW  
G11-08-12U (2)

CONNECTOR-PLASTIC  
008356-01-000 (2)

BOX-4X4  
8289-01-000  
COVER-4X4  
8294-01-000  
WIRE ASM-GROUND  
133678-07-000  
SCREW-GROUND  
103291-01-000  
WIRE NUT  
8313-01-000 (3)  
SCREW  
G11-08-12U (2)

CONNECTOR-PLASTIC  
008356-01-000 (2)

FROM LOAD CENTER  
(RANGE)

CLAMP  
10495-01-000 (12)  
SCREW  
G67-10-12U (12)

FROM GFI-GALLEY  
(BLU)

FROM RCP-VACUUM  
(YEL)

FROM LOAD CENTER  
(SIL)

FROM LOAD CENTER  
(BLK)

FROM RCP-BASEMENT  
(BLU-2)

THROW IN WIRE #12

BRACKET-110V CONNECTOR  
000017708 / 313445-01-CHT (2)  
SCREW  
G39-10-12U (6)

VIEW EA  
(LOCATED UNDER  
GALLEY ISLAND)

SLIDEOUT WIRE #4  
(RANGE) 1

CLAMP  
10495-01-000 (12)  
SCREW  
G67-10-12U (12)

SLIDEOUT WIRE #2  
(BLU) 1

SLIDEOUT WIRE #11  
(YEL) 1

SLIDEOUT WIRE #3  
(SIL) 1

SLIDEOUT WIRE #1  
(BLK) 1

SLIDEOUT WIRE #8  
(BLU-2) 1

CONNECTOR-WIRE,SOW  
(REF) (10 PLACES)  
SCREW  
G39-06-24U (20)

VIEW EB  
(LOCATED UNDER  
GALLEY CABINET)

CONNECTOR-WIRE  
144283-01-000 (10)  
SCREW  
G39-06-24U (20)

TO RANGE

THROW IN WIRE #2

THROW IN WIRE #1

TO RCPS-GALLEY  
(BLU)

THROW IN WIRE #14

TO RCP-REFRIGERATOR  
(YEL)

THROW IN WIRE #5

TO RCP-DISHWASHER  
(SIL)

TO RCP-MICROWAVE 2

TO RCP-EXT ENT CTR  
(BLU-2)

THROW IN WIRE #8

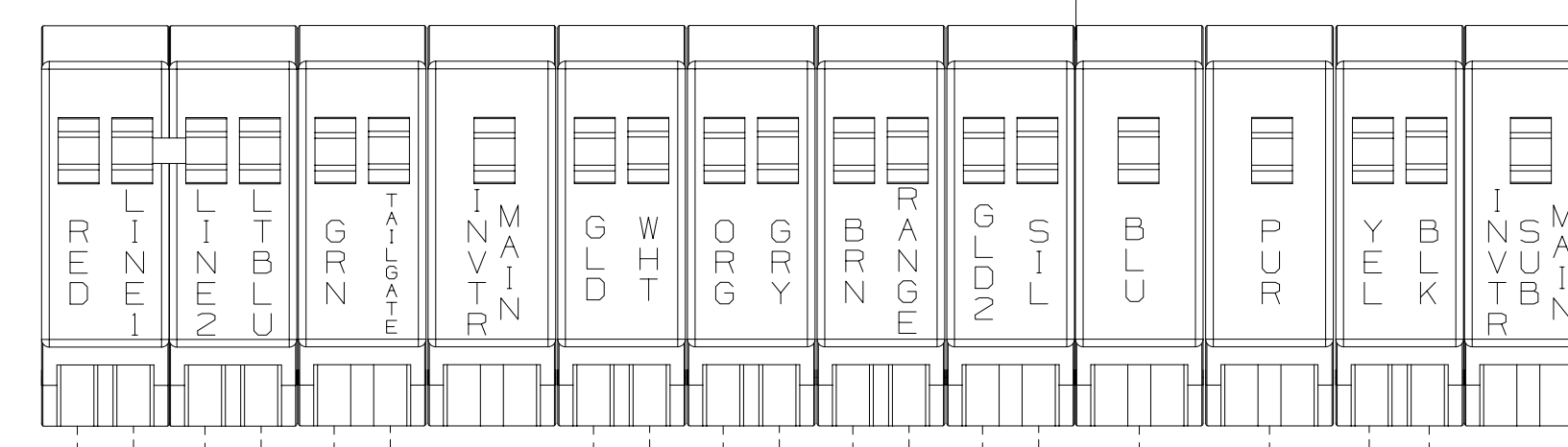
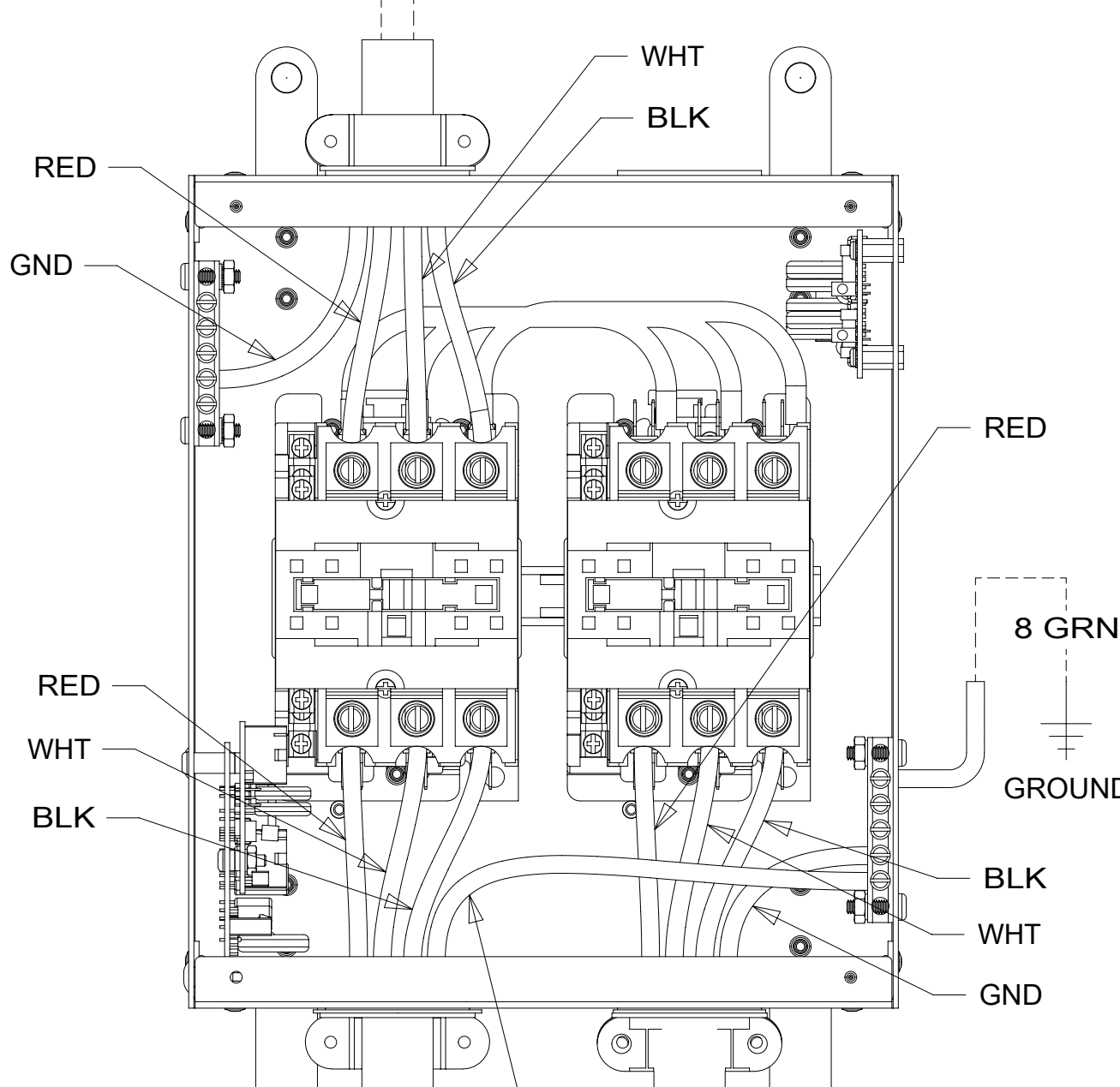
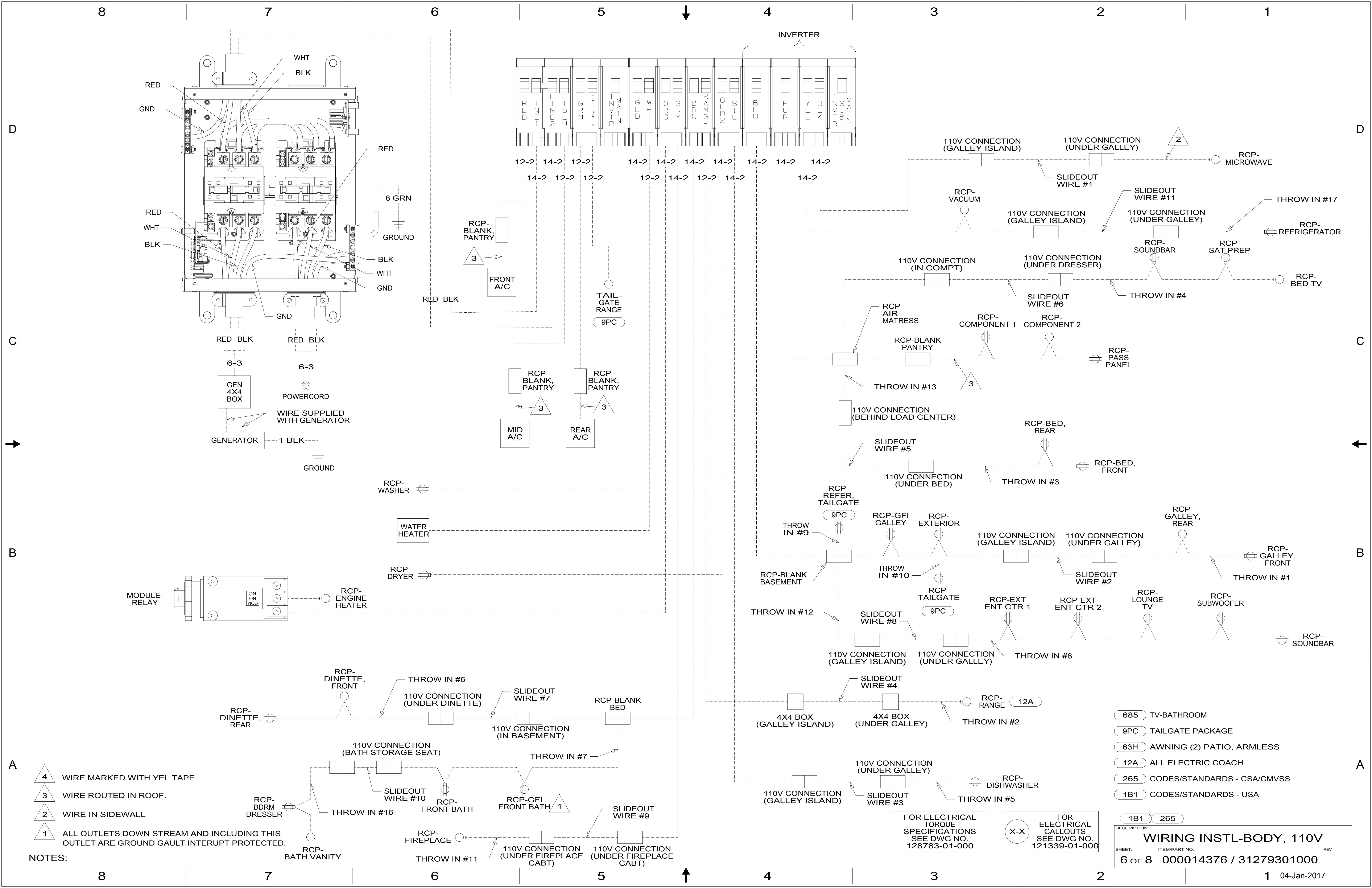
- NOTES:
- 2 WIRE ROUTED IN SIDEWALL.
  - 1 SEE LOAD CENTER/ATS ASM FOR ADDITIONAL INFORMATION.

FOR ELECTRICAL  
TORQUE  
SPECIFICATIONS  
SEE DWG NO.  
128783-01-000

FOR ELECTRICAL  
CALLOUTS  
SEE DWG NO.  
121339-01-000

- 265 CODES/STANDARDS - CSA/CMVSS
- 1B1 CODES/STANDARDS - USA

DESCRIPTION:	
<b>WIRING INSTL-BODY, 110V</b>	
SHEET:	ITEM/PART NO:
5 OF 8	000014376 / 31279301000
REV	
	04-Jan-2017



- NOTES:
- 4 WIRE MARKED WITH YEL TAPE.
  - 3 WIRE ROUTED IN ROOF.
  - 2 WIRE IN SIDEWALL
  - 1 ALL OUTLETS DOWN STREAM AND INCLUDING THIS OUTLET ARE GROUND GAULT INTERRUPT PROTECTED.

- 685 TV-BATHROOM
- 9PC TAILGATE PACKAGE
- 63H AWNING (2) PATIO, ARMLESS
- 12A ALL ELECTRIC COACH
- 265 CODES/STANDARDS - CSA/CMVSS
- 1B1 CODES/STANDARDS - USA

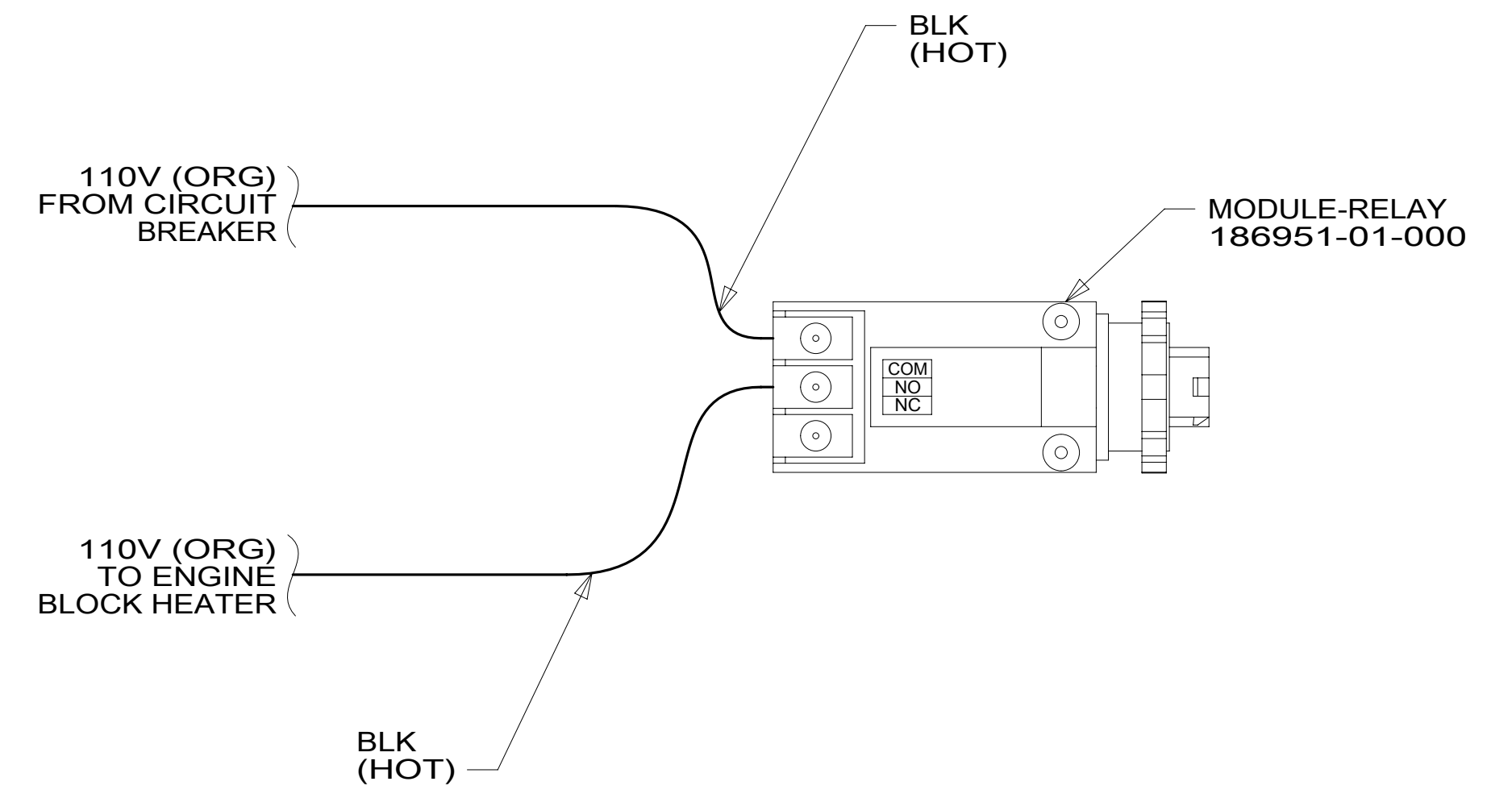
FOR ELECTRICAL TORQUE SPECIFICATIONS SEE DWG NO. 128783-01-000

FOR ELECTRICAL CALLOUTS SEE DWG NO. 121339-01-000

DESCRIPTION: <b>WIRING INSTL-BODY, 110V</b>		
SHEET: 6 OF 8	ITEM/PART NO: 000014376 / 31279301000	REV
04-Jan-2017		

RED	1B1	136135-07-080
	265	136136-07-080
MAIN	1B1	174031-01-060
	265	174031-01-060
GRN	1B1	136135-08-080
	265	136136-08-080
LT BLU	1B1	136135-21-080
	265	136136-21-080
INVERTER CHARGER MAIN	1B1	136137-01-090
	265	136138-01-090
YEL	1B1	136131-05-134 <sup>1</sup>
	265	136134-05-134 <sup>1</sup>
GLD	1B1	136131-10-085
	265	136134-10-085
GLD-2	1B1	136131-20-085
	265	136134-20-085
WHT	1B1	136135-09-065
	265	136136-09-065
RANGE	1B1	136135-01-082
	265	136136-01-082

INVERTER CHARGER SUB MAIN	1B1	136137-01-096
	265	136138-01-096
BLU	1B1	136131-02-155 <sup>1</sup>
	265	136134-02-155 <sup>1</sup>
BRN	1B1	136131-03-095 <sup>1</sup>
	265	136134-03-095 <sup>1</sup>
PUR	1B1	136131-04-090
	265	136134-04-090
ORG	1B1	136131-16-060
	265	136134-16-060
BLK	1B1	136131-06-082 <sup>1</sup>
	265	136134-06-082 <sup>1</sup>
SIL	1B1	136131-11-082 <sup>1</sup>
	265	136134-11-082 <sup>1</sup>
GRY	1B1	136131-15-092 <sup>1</sup>
	265	136134-15-092 <sup>1</sup>
GROUND MAIN		136145-01-060
GROUND ATS		136145-01-030
GROUND INVERTER		136145-04-006
CABLE ASM GEN		174031-03-095
TAILGATE	1B1	136135-01-061
	265	136136-01-061



DETAIL AA

NOTES: <sup>1</sup> SEE DETAIL BA FOR CONNECTOR INSTALLATION.

FOR ELECTRICAL TORQUE SPECIFICATIONS SEE DWG NO. 128783-01-000

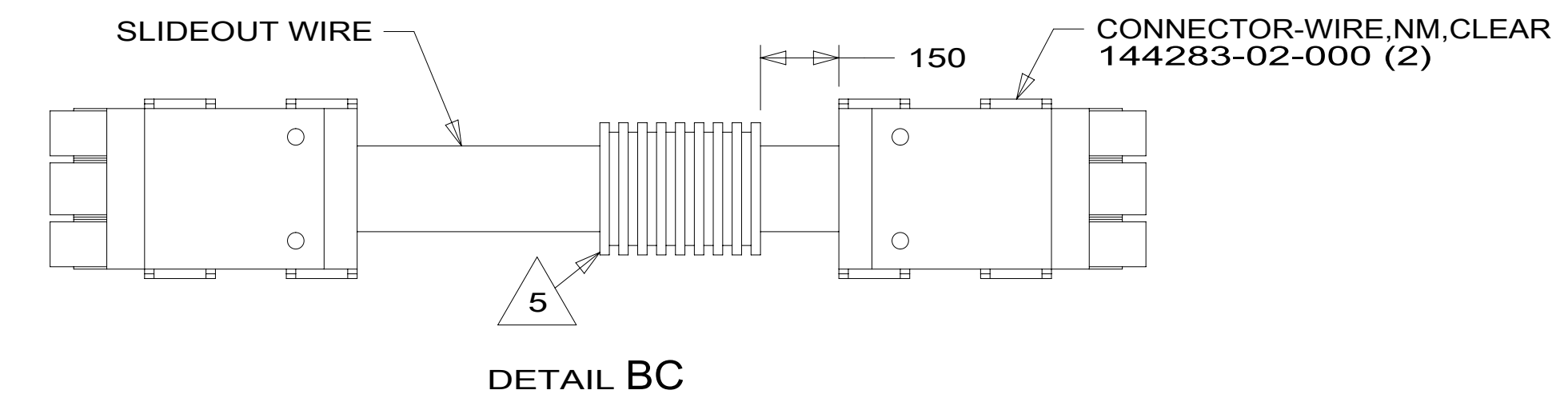
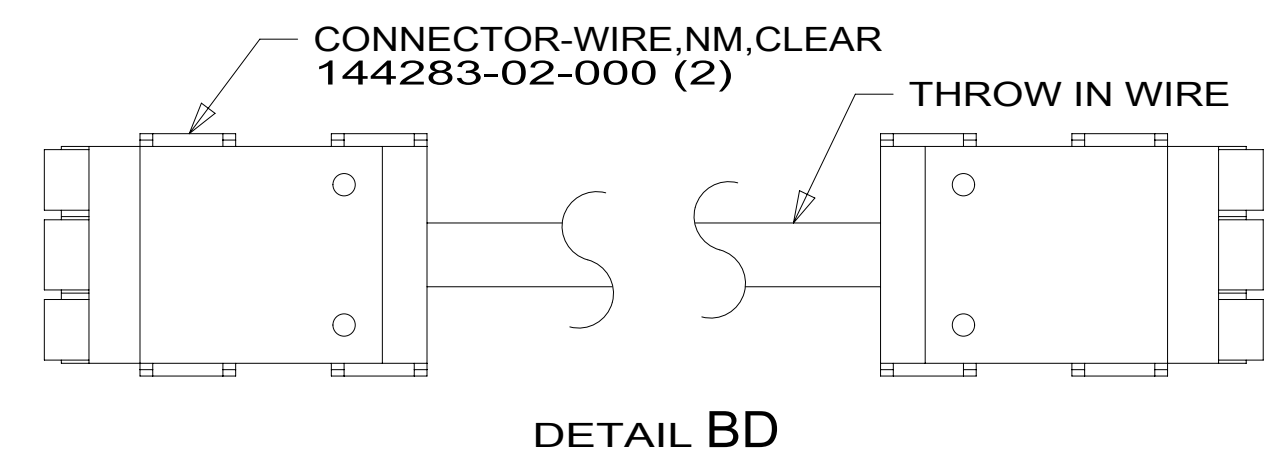
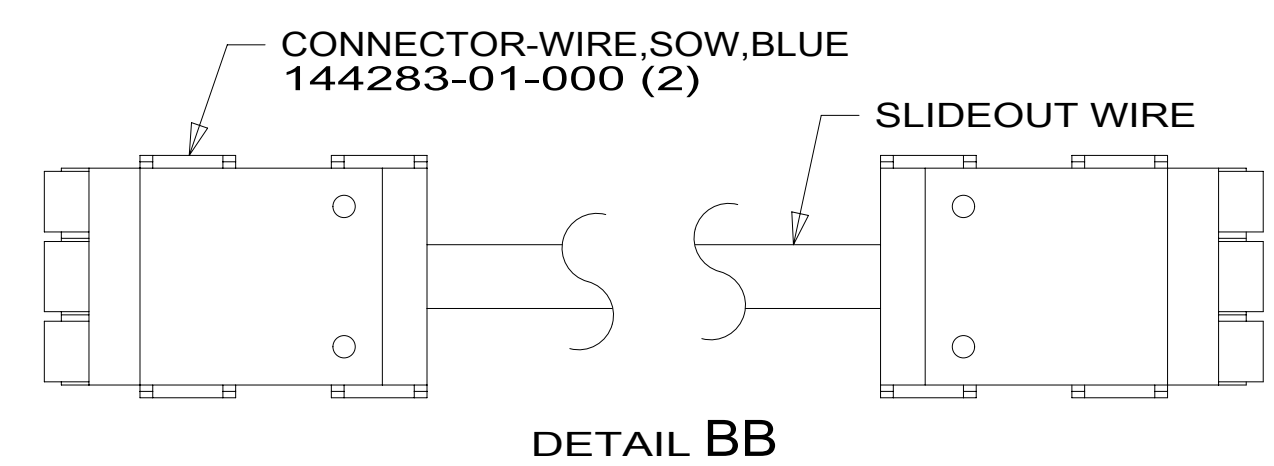
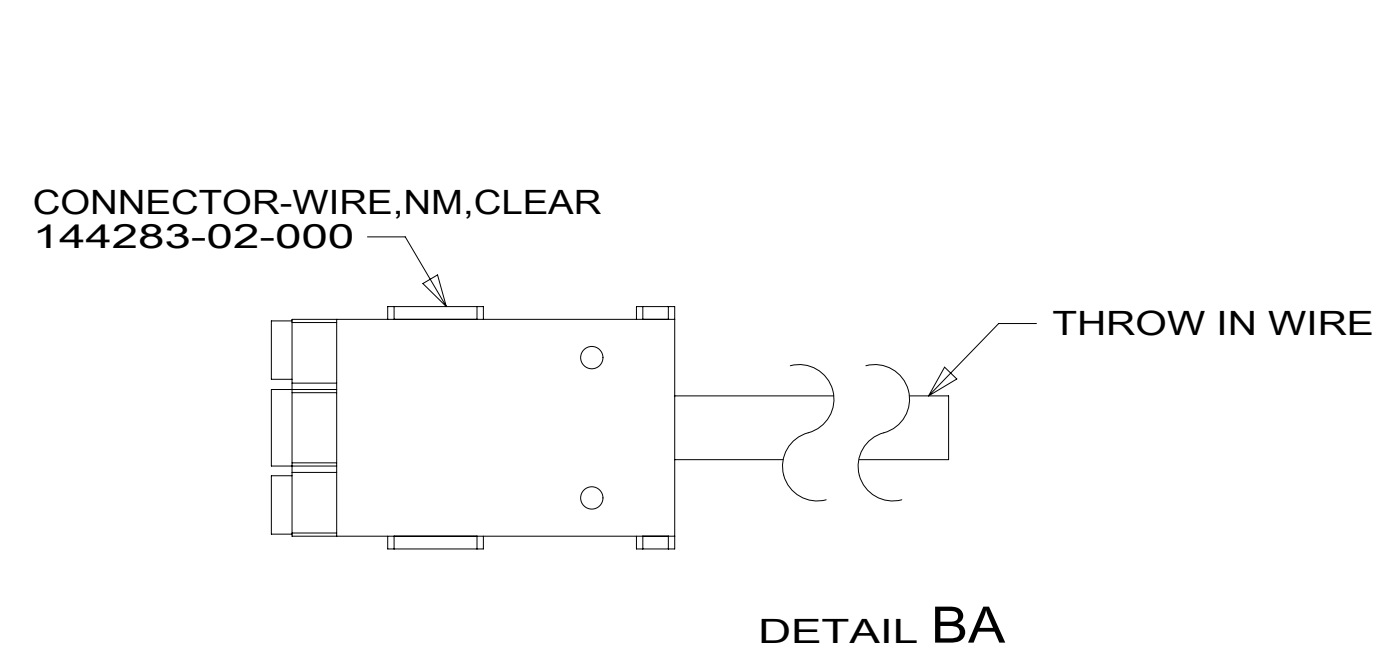
FOR ELECTRICAL CALLOUTS SEE DWG NO. 121339-01-000

265 CODES/STANDARDS - CSA/CMVSS  
1B1 CODES/STANDARDS - USA

DESCRIPTION:	1B1 265	
<b>WIRING INSTL-BODY, 110V</b>		
SHEET:	ITEM/PART NO:	REV
7 OF 8	000014376 / 31279301000	

SLIDEOUT WIRE #1		136151-06-027	2
SLIDEOUT WIRE #2		136151-02-027	2
SLIDEOUT WIRE #3		136151-11-027	2
SLIDEOUT WIRE #4		136152-01-027	
SLIDEOUT WIRE #5		136151-04-012	2
SLIDEOUT WIRE #6		136151-04-033	4
SLIDEOUT WIRE #7		136151-03-040	4
SLIDEOUT WIRE #8		136151-24-027	4
SLIDEOUT WIRE #9		136151-15-040	4
SLIDEOUT WIRE #10		136151-03-033	2
SLIDEOUT WIRE #11		136151-05-027	2
THROW IN WIRE #1	1B1	136131-02-045	1
	265	136134-02-045	1
THROW IN WIRE #2	1B1	136135-01-025	
	265	136136-01-025	
THROW IN WIRE #3	1B1	136131-04-064	1
	265	136134-04-064	1

THROW IN WIRE #4	1B1	136131-04-030	1
	265	136134-04-030	1
THROW IN WIRE #5	1B1	136131-11-025	1
	265	136134-11-025	1
THROW IN WIRE #6	1B1	136131-03-027	1
	265	136134-03-027	1
THROW IN WIRE #7	1B1	136131-03-120	1
	265	136134-03-120	1
THROW IN WIRE #8	1B1	136131-24-095	1
	265	136134-24-095	1
THROW IN WIRE #9	1B1	136131-02-045	
	265	136134-02-045	
THROW IN WIRE #10	1B1	136131-02-070	
	265	136134-02-070	
THROW IN WIRE #11	1B1	136131-15-020	1
	265	136134-15-020	1
THROW IN WIRE #12	1B1	136131-24-040	1
	265	136134-24-040	1
THROW IN WIRE #13	1B1	136131-04-060	3
	265	136134-04-060	3
THROW IN WIRE #14			
THROW IN WIRE #15	1B1	136131-03-050	1
	265	136134-03-050	1
THROW IN WIRE #16	1B1	136131-05-025	1
	265	136134-05-025	1



- NOTES:
- 5 APPLY 300MM OF CONDUIT-CONVOLUTE 41953-05-000 OVER WIRE AT DIMENSION SHOWN AND SECURE BOTH ENDS OF TUBING TO WIRE WITH TAPE 8363-01-000.
  - 4 SEE DETAIL BC FOR CONNECTOR INSTALLATION.
  - 3 SEE DETAIL BD FOR CONNECTOR INSTALLATION.
  - 2 SEE DETAIL BB FOR CONNECTOR INSTALLATION.
  - 1 SEE DETAIL BA FOR CONNECTOR INSTALLATION.

FOR ELECTRICAL TORQUE SPECIFICATIONS SEE DWG NO. 128783-01-000

FOR ELECTRICAL CALLOUTS SEE DWG NO. 121339-01-000

265 CODES/STANDARDS - CSA/CMVSS  
1B1 CODES/STANDARDS - USA

1B1	265	
DESCRIPTION: <b>WIRING INSTL-BODY, 110V</b>		
SHEET: 8 OF 8	ITEM/PART NO: 000014376 / 31279301000	REV