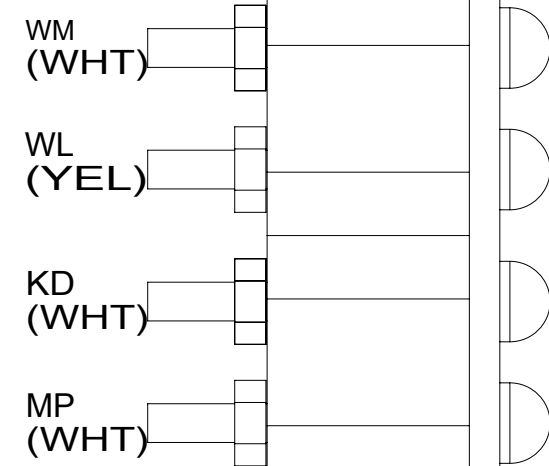


DETAIL AC

THIS SIDE POINTED TO TOP OF DOOR



DETAIL AB

15 SWITCH MOUNTS IN GENERATOR TRAY RELEASE HANDLE. SEE GENERATOR INSTL FOR ADDITIONAL INFORMATION.

14 WIRE TIE SAT TUNER TO DASH RADIO WIRING.

13 RUN CABLE THRU LEFT HAND COVE TO FRONT OF UNIT AND DOWN LEFT A-POST TO MONITOR.

12 ROUTE UP A-POST TO RUN THRU ROOF.

11 CONNECT 2-12 PIN HSGS TO EACH OTHER WITHOUT 57P

10 ROUTE CABLE TO EXTERIOR MIRRORS. CAMERA IS IN MIRROR.

9 ROUTE CABLE TO EXTERIOR THRU HOLE IN PANEL ALONG WITH HEATER WIRING TO RIGHT CAMERA.

8 ALIGN CAMERA IN CENTER OF SHROUD OPENING AND ADJUST SO BACKWALL IS JUST VISIBLE.

7 PARTS SUPPLIED WITH REAR CAMERA.

6 USE TAPE 8363-03-000 TO SECURE WIRES IN A-POST.

5 SEE ANTENNA INST-RADIO & CB FOR ADDITIONAL INFO.

4 APPLY FOAM TAPE TO BOTTOM OF FAN TO SEAL FAN TO PANEL.

3 CABLE SUPPLIED WITH SATELLITE RADIO RECEIVER. PLUG INTO BACK OF RADIO & TIE TO IP,MAIN. ROUTE UP A-POST WITH RADIO ANTENNA WIRE.

2. USE SEAL-TRIM 113452-01-000 TO PROTECT WIRES FROM SHARP EDGES.

1. SEE WIRING INSTL-CHASSIS FOR ADDITIONAL INFORMATION.

NOTES:

FAN-DEFROSTER 154851-01-000
TAPE-FOAM 99069-01-000 (120)(4) (45)(2)
SCREW G11-08-12B (6)
PANEL-PLENUM 170841-04-CHT
SCREW G39-10-12U (6)
ADAPTER-HOSE 171749-01-CHT (2)
HOSE 179183-01-000 (650)

CAMERA SWITCHER (ON FLOOR BEHIND METAL PANEL)

RADIO ANTENNA WIRE

DETAIL FA

AMPLIFIER 193630-02-000
SCREW G39-10-08U (4)
WIRE ASM-AMP 194217-01-000
194217-02-000
194217-03-000

2 PIN HSG TO CLEARANCE LIGHTS

RADIO-KIT,SXM 000111632 / 321635-01-000

(6) BUTT SPLICES TO SUNVISOR
HHK-BLK SOLAR SHADE
HHL-BLK/GRY NIGHT SHADE
HHM-BLK
HHN-BLK/GRY
JJX-BRN (2)

TO REAR CAMERA
DETAIL AA

6 PIN HOUSING TO WIRE ASM-ROOF

RECEPTACLE-12V 111414-01-000
DETAIL AC

MODULE-TPMS 000028270 / 316211-01-000
SCREW 000G11-12-20U (2)
CABLE ASM-TMPS MODULE 000029306 / 316431-01-000

CABLE-MONITOR 180731-02-000

SPEAKER 171547-01-CHT (2)
SCREW G11-08-20U (8)
SPEAKER 193631-01-000 (3)
SCREW G11-08-20U (12)

MOBILEYE 560 314187-01-000
DETAIL JA

FILTER-NOISE,12V 128074-02-000

WIRE ASM-IP,MAIN 302789-01-000

SWITCHES
DETAIL DB

CLAMP 010497-02-000

6 & 2 PIN HOUSING TO LEFT MIRROR
CABLE-MONITOR 180731-03-000

SWITCH-GENERATOR SLIDE 108357-06-000
ACTUATOR 108356-01-000

BRACKET-RELAY PANEL 145448-01-CHT
SCREW G67-10-08U (4)

12V BREAKER PANEL
DETAIL CA

DOOR ASM 145066-03-CHT
SCREW G67-06-10U (6)
SCREW G67-10-08U (4)

PANEL ASM 145063-09-CHT
SCREW G67-06-10U (6)

GROMMET 071015-45-000

BOX ASM-SPEAKER 193358-01-XXX
SCREW G11-10-16U (4)
SPEAKER-8" 193633-01-000
WIRE ASM-PIGTAIL 193633-04-000
SCREW G11-10-12U (4)
GRILL 193633-03-000
PLATE-SPEAKER 194221-01-000 (2)
SCREW G11-08-08U (8)
SEAL 185989-07-CHT (360 MM) (2)
SCREW G11-10-12U (4)

WIRE ASM-OVHD,FRONT 000005701 / 312358-01-000

TO DOOR CONTACT PLATE
DETAIL AB

GROMMET 088756-01-000

CABLE-MONITOR 180731-03-000

NUT D29-04-00U (2)

WASHER E13-14-00U (2)

BRACKET-MOUNT, CAMERA 152022-05-CHT

SCREW G39-10-12U (EXT) (2)

CAMERA-REAR,COLOR,W/BRACKET 000124231 / 323840-01-000

MOUNTS TO PANEL ASM-REAR CAP

DETAIL AA

38M TIRE MONITORING SYSTEM

571 RADIO SPEAKERS

57P RADIO SPEAKERS-PREMIUM SOUND

36C COLLISION AVOIDANCE SYSTEM

157 INFOTAIN CTR/GPS SIRIUSXM

265 CODES/STANDARDS-CSA/CMVSS

1B1 CODES/STANDARDS USA

1B1 265

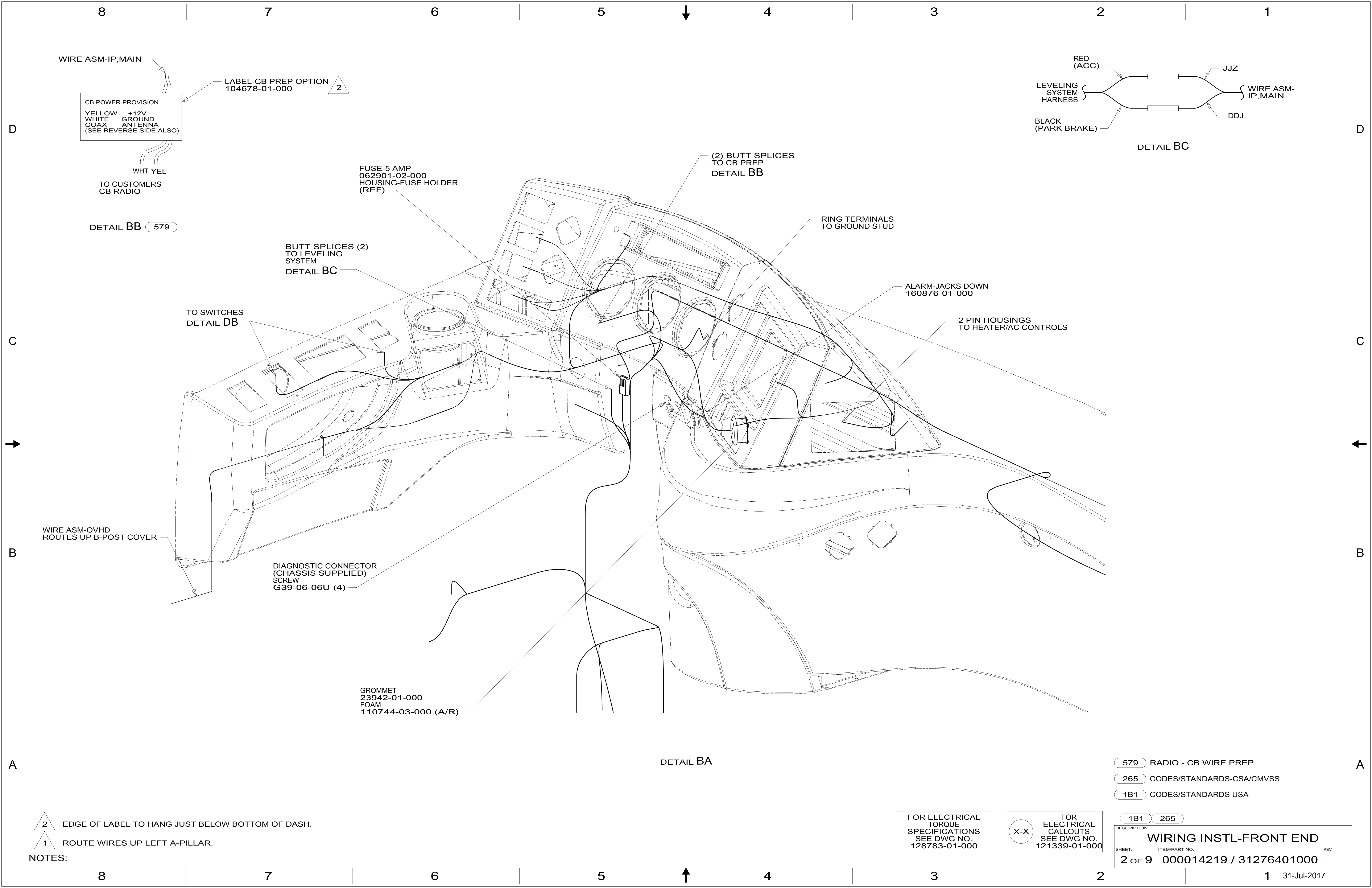


COPYRIGHT 2016 WINNEBAGO INDUSTRIES, INC.

DSNR:	ALL DIMENSIONS ARE IN MILLIMETERS	
DIFFR:		
UNSPECIFIED TOLERANCES:	MATERIAL:	
WHOLE DIM (X) :	3	
ONE-PLACE (X.X) :	1.5	
TWO-PLACE (X.XX) :	0.50	
ANGLE :	1°	
REFER TO ES0018 FOR FASTENER TIGHTENING GUIDELINES	WEIGHT: (LBS)	FIRST USED:
		17 R-SER
DESCRIPTION:		
WIRING INSTL-FRONT END		
SHEET:	ITEM/PART NO:	REV
1 OF 9	000014219 / 31276401000	

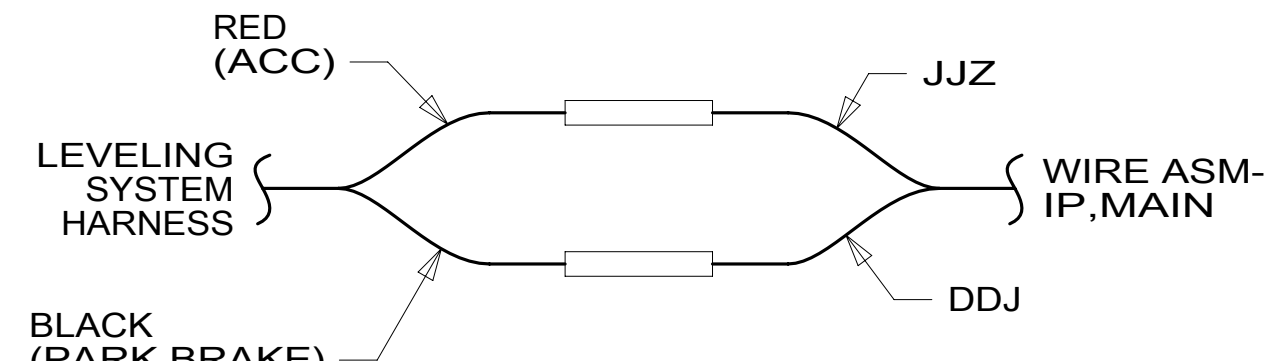
FOR ELECTRICAL TORQUE SPECIFICATIONS SEE DWG NO. 128783-01-000

FOR ELECTRICAL CALLOUTS SEE DWG NO. 121339-01-000



WIRE ASM-IP,MAIN
 CB POWER PROVISION
 YELLOW +12V
 WHITE GROUND
 COAX ANTENNA
 (SEE REVERSE SIDE ALSO)

LABEL-CB PREP OPTION
 104678-01-000



DETAIL BC

WHT YEL
 TO CUSTOMERS
 CB RADIO

FUSE-5 AMP
 062901-02-000
 HOUSING-FUSE HOLDER
 (REF)

(2) BUTT SPLICES
 TO CB PREP
 DETAIL BB

DETAIL BB 579

RING TERMINALS
 TO GROUND STUD

BUTT SPLICES (2)
 TO LEVELING
 SYSTEM
 DETAIL BC

ALARM-JACKS DOWN
 160876-01-000

TO SWITCHES
 DETAIL DB

2 PIN HOUSINGS
 TO HEATER/AC CONTROLS

WIRE ASM-OVHD
 ROUTES UP B-POST COVER

DIAGNOSTIC CONNECTOR
 (CHASSIS SUPPLIED)
 SCREW
 G39-06-06U (4)

GROMMET
 23942-01-000
 FOAM
 110744-03-000 (A/R)

DETAIL BA

- NOTES:
- 2 EDGE OF LABEL TO HANG JUST BELOW BOTTOM OF DASH.
 - 1 ROUTE WIRES UP LEFT A-PILLAR.

FOR ELECTRICAL
 TORQUE
 SPECIFICATIONS
 SEE DWG NO.
 128783-01-000

FOR ELECTRICAL
 CALLOUTS
 SEE DWG NO.
 121339-01-000

- 579 RADIO - CB WIRE PREP
- 265 CODES/STANDARDS-CSA/CMVSS
- 1B1 CODES/STANDARDS USA

DESCRIPTION:		1B1 265
WIRING INSTL-FRONT END		
SHEET:	ITEM/PART NO.:	REV:
2 OF 9	000014219 / 31276401000	

HEADLAMP MODULE
(CHASSIS SUPPLIED)
SCREW
G1108-08U (2)

GROMMET
23942-01-000
SEAL

BRACKET-MOUNTING
118571-07-000 (2)
SCREW
G19-10-08U (4)

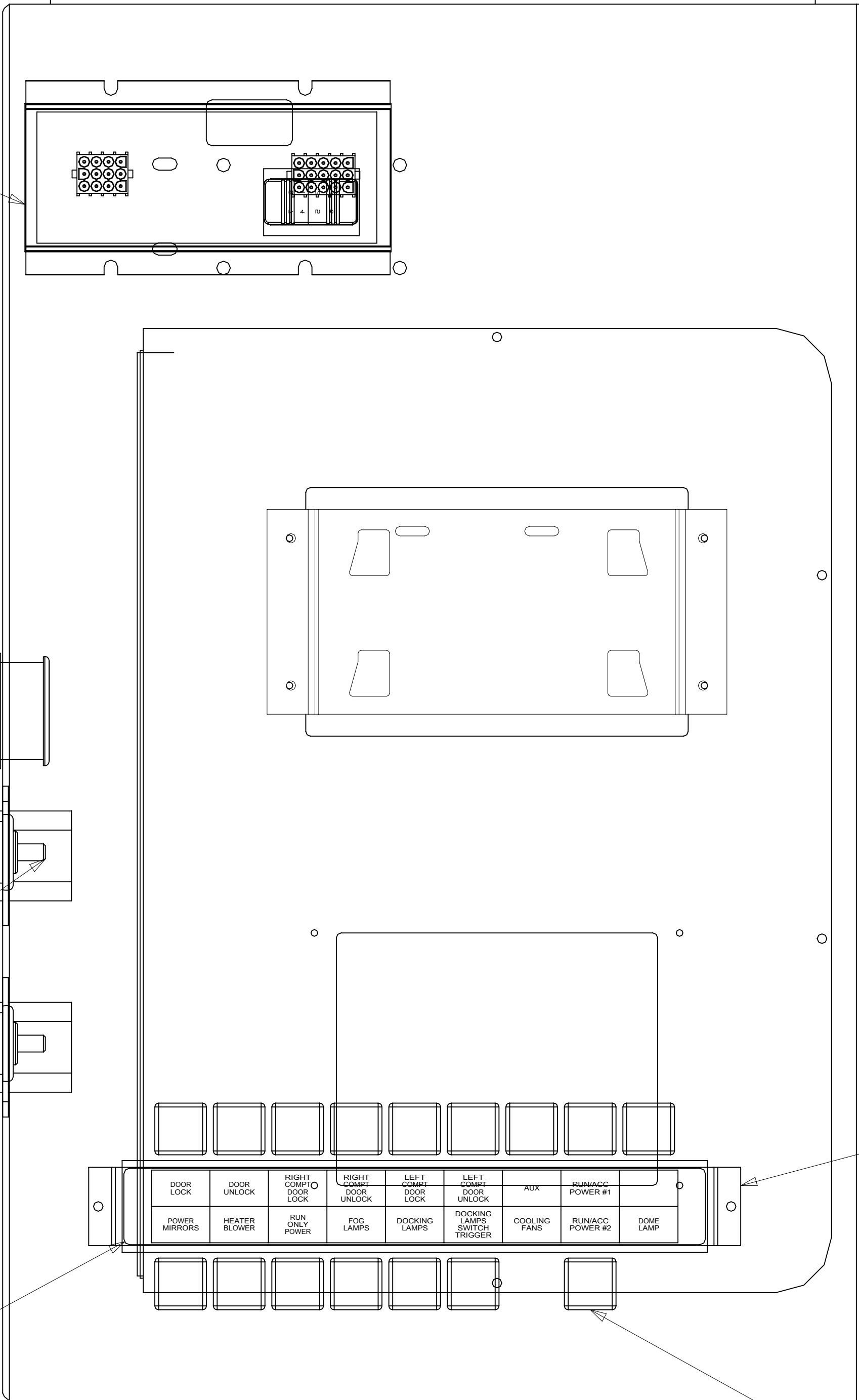
CHASSIS POWER

(2) 6 GA WIRES
FROM WIRE ASM-IP,MAIN

COACH POWER

STUD-FEED THRU
118499-01-000 (2)

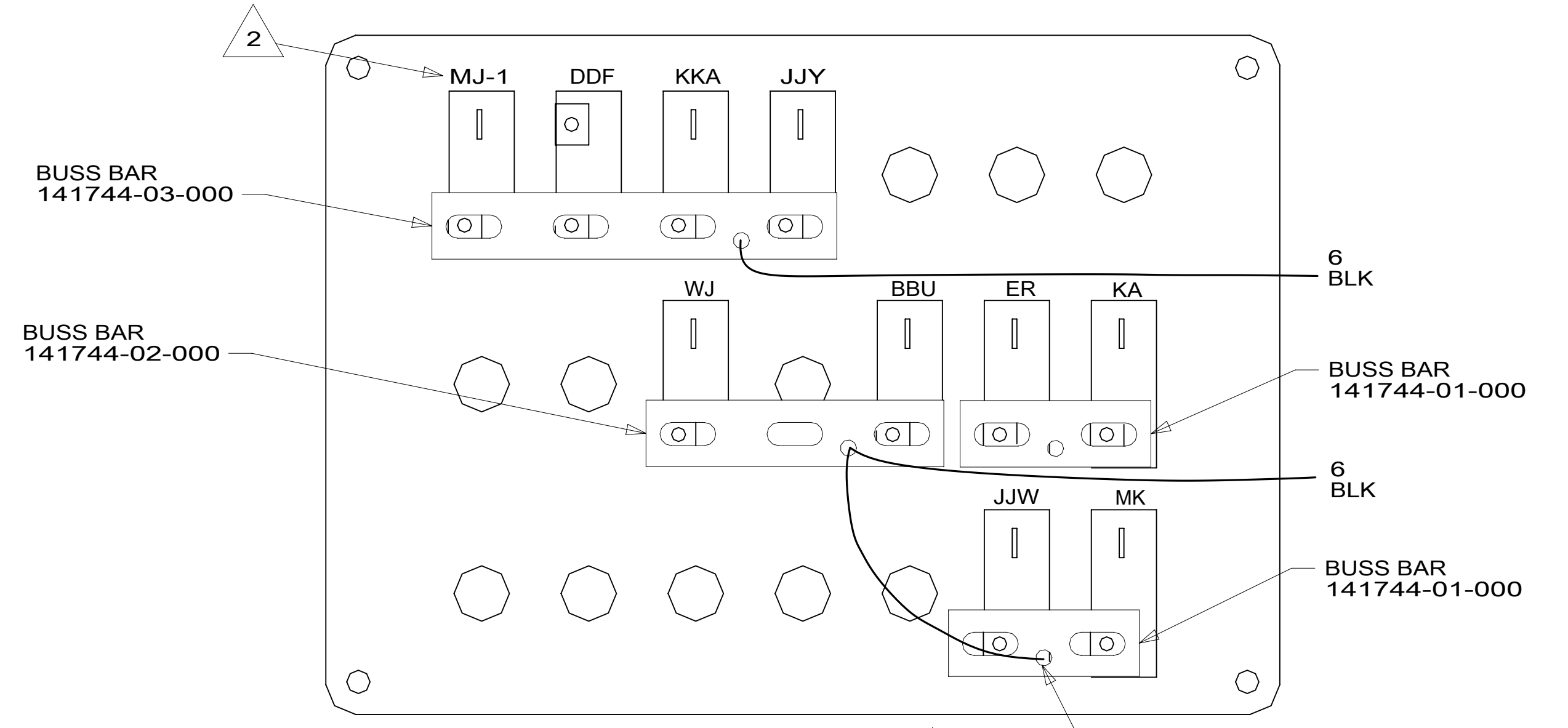
LABEL
136161-06-CHT



VIEW CB
(WITH COVER REMOVED) 3

BRACKET
136120-02-CHT
SCREW
G11-08-08U (2)

RELAY
63912-02-000 (16)
SCREW
G11-08-08U (16)



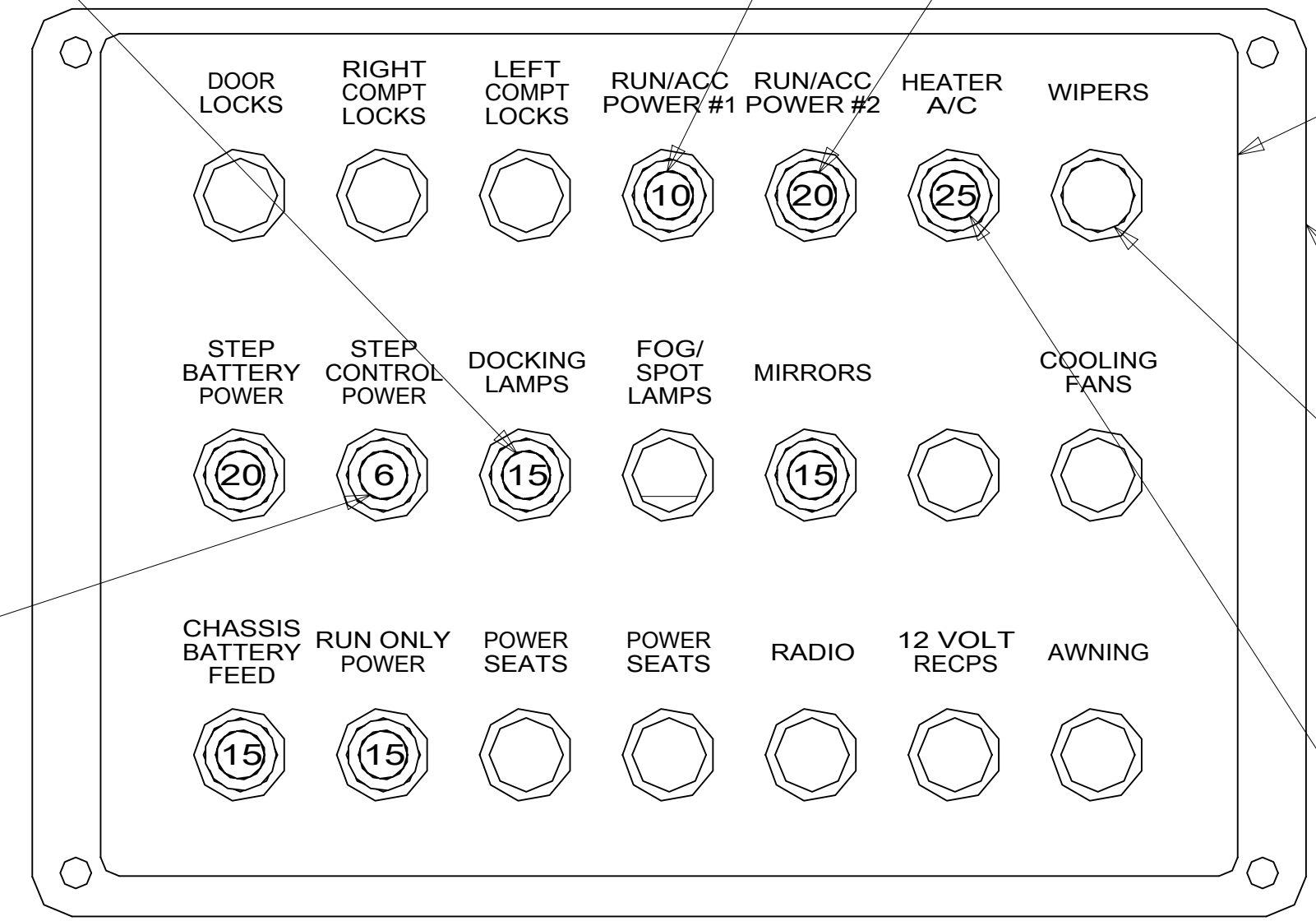
DETAIL CA
(BACK VIEW) 1

CIRCUIT BREAKER-15 AMP
93654-02-000 (4)
SCREW
G52-06-04U (4)

CIRCUIT BREAKER-10 AMP
093654-05-000
SCREW
G52-06-04U

CIRCUIT BREAKER-20 AMP
93654-03-000 (2)
SCREW
G52-06-04U (2)

CIRCUIT BREAKER-6 AMP
93654-01-000
SCREW
G52-06-04U



LABEL-CIRCUIT
BREAKER-MAIN
93236-80-000

PLATE-CIRCUIT BREAKER
139067-07-CHT
SCREW
G11-08-08U (4)

BREAKER-SELF
RESET, 20 AMP
182283-01-000
SCREW
G52-06-04U

CIRCUIT BREAKER-25 AMP
93655-01-000
SCREW
G52-06-04U (2)

DETAIL CA
(FRONT VIEW)

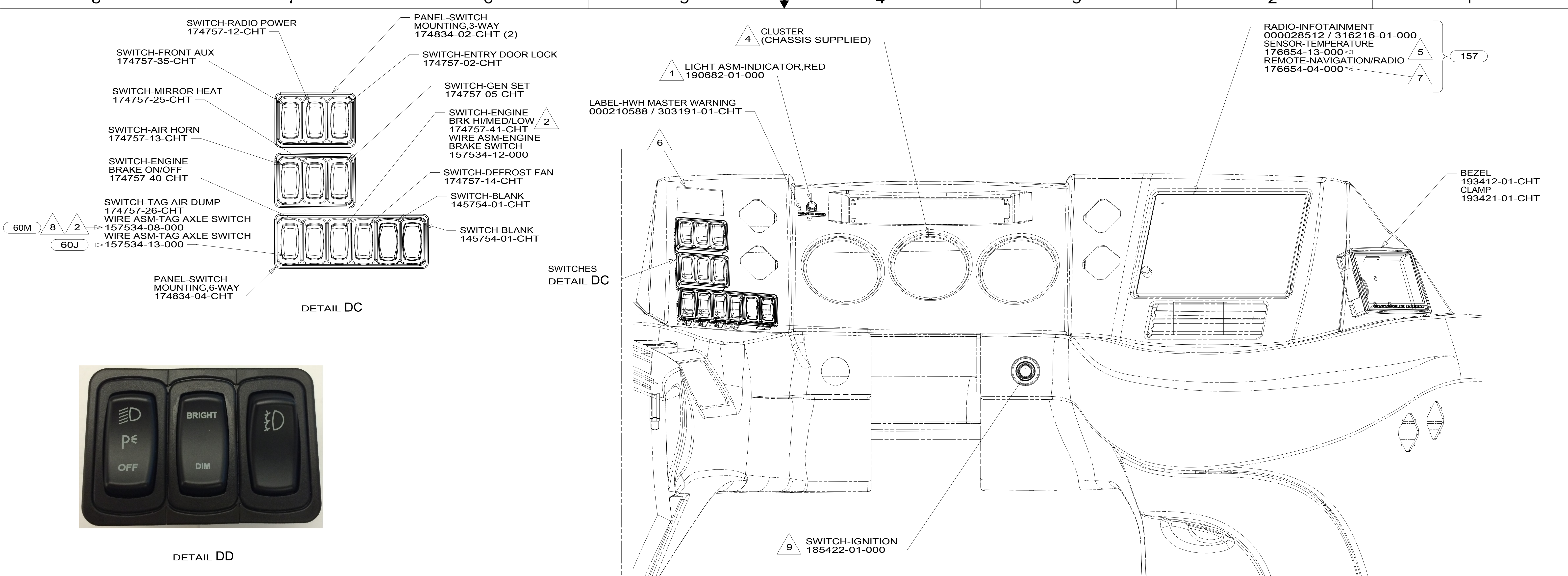
- NOTES:
- 3 SEAL ALL SCREWS ON EXTERIOR SIDE OF COMPARTMENT. REFER TO SEALANT MANUAL.
 - 2 FROM WIRE ASM-WIPER.
 - 1 CIRCUITS LABELED ON BREAKER ARE FROM WIRE ASM-IP, MAIN, UNLESS OTHERWISE SPECIFIED.

265 CODES/STANDARDS-CSA/CMVSS
1B1 CODES/STANDARDS USA

FOR ELECTRICAL
TORQUE
SPECIFICATIONS
SEE DWG NO.
128783-01-000

X-X
FOR ELECTRICAL
CALLOUTS
SEE DWG NO.
121339-01-000

DESCRIPTION: WIRING INSTL-FRONT END	
SHEET: 3 OF 9	ITEM/PART NO: 000014219 / 31276401000
REV	



DETAIL DD

DETAIL DC

DETAIL DA

DETAIL DB

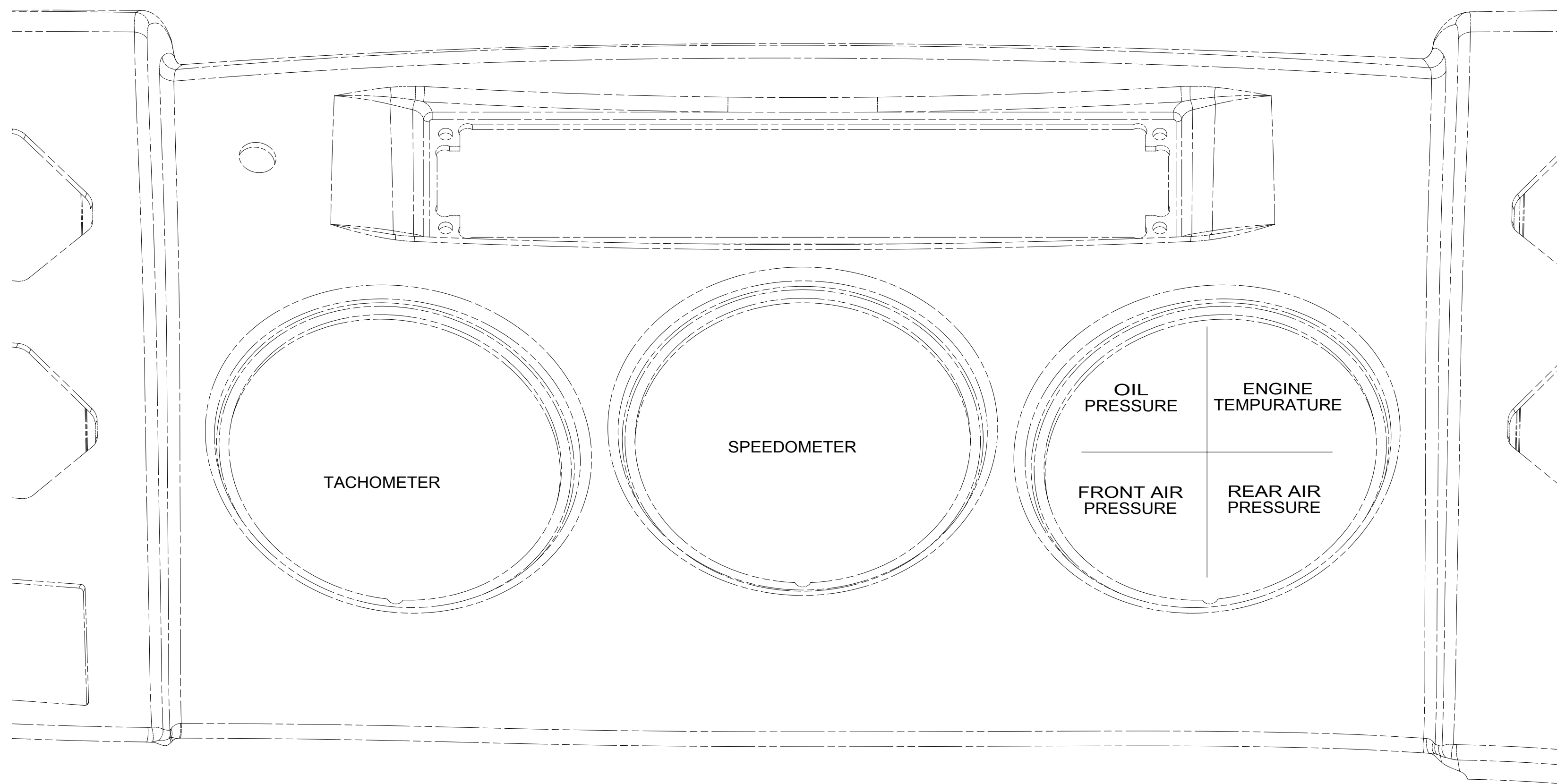
- NOTES:
- 9 REPLACE CHASSIS SUPPLIED IGNITION SWITCH.
 - 8 NOT USED WITH 60J
 - 7 TO BE SUPPLIED LOOSE IN WINNEBAGO OWNERS CASE.
 - 6 CHASSIS SUPPLIED ROCKER SWITCHES.
DOME LAMP SWITCH NOT USED. SEE DETAIL DD FOR SWITCH POSITION.
 - 5 ROUTE TEMP SENSOR THRU HOLE IN BULKHEAD TO BRACKET (SEE SHT 7).
 - 4 SEE DETAIL EA FOR GAUGE PLACEMENT.
 - 3 MOUNT SWITCH SO WHEN ACTUATOR IS PUSHED LEFT, THE LETTER L IS SHOWING.
 - 2 CONNECT TO MATING LABELED CONNECTOR ON CHASSIS SUPPLIED WIRING.
 - 1 CONNECT POSITIVE WIRE TO TERMINAL MARKED WITH A "RED", YEL-WINNEBAGO WIRING

- 60J AIR LEVELING - SUSPENSION
- 60M HYDRAULIC LEVEL JACKS-AUTO
- 157 INFOTAIN CTR/GPS SIRIUSXM
- 265 CODES/STANDARDS-CSA/CMVSS
- 1B1 CODES/STANDARDS USA

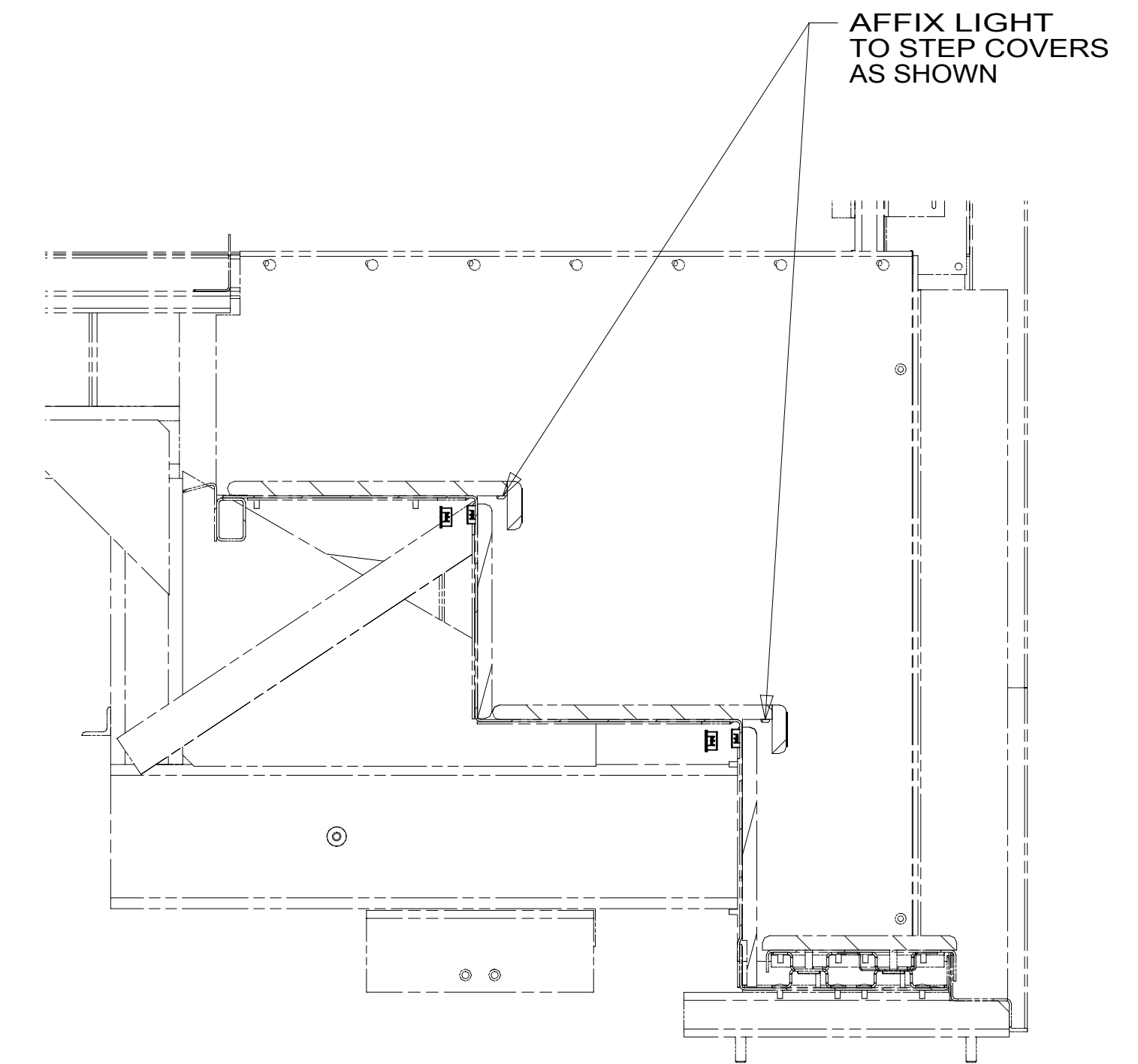
FOR ELECTRICAL TORQUE SPECIFICATIONS SEE DWG NO. 128783-01-000

FOR ELECTRICAL CALLOUTS SEE DWG NO. 121339-01-000

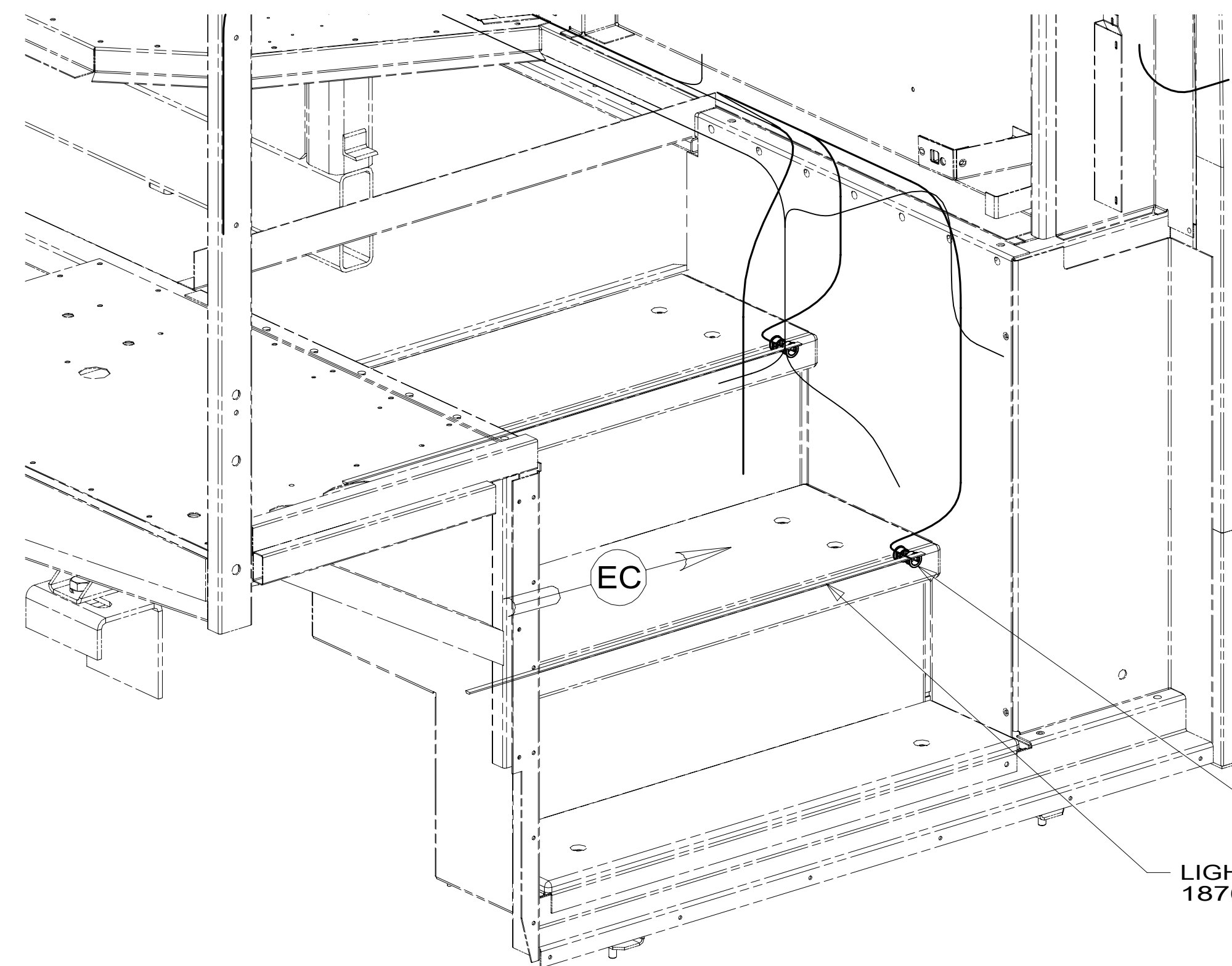
DESCRIPTION:		1B1 265
WIRING INSTL-FRONT END		
SHEET:	ITEM/PART NO.:	REV
4 OF 9	000014219 / 31276401000	



DETAIL EA ¹



VIEW EC



GROMMET
114208-02-000 (4)

LIGHT-TAPE,LED
187693-14-CHT (2)

¹ ALL STANDARD GAUGES, RETAINER CLIPS AND FASTENERS ARE CHASSIS SUPPLIED.

NOTES:

FOR ELECTRICAL TORQUE SPECIFICATIONS SEE DWG NO. 128783-01-000

FOR ELECTRICAL CALLOUTS SEE DWG NO. 121339-01-000

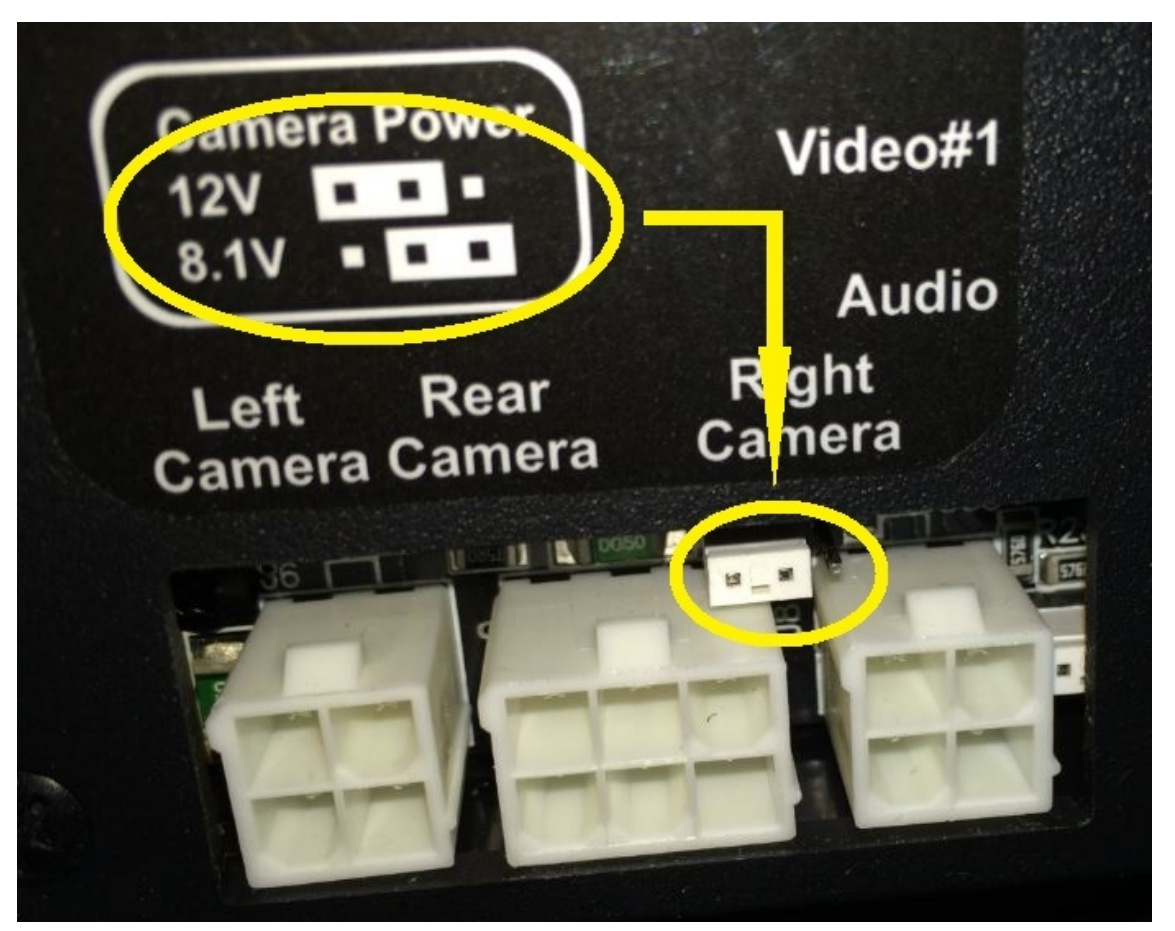
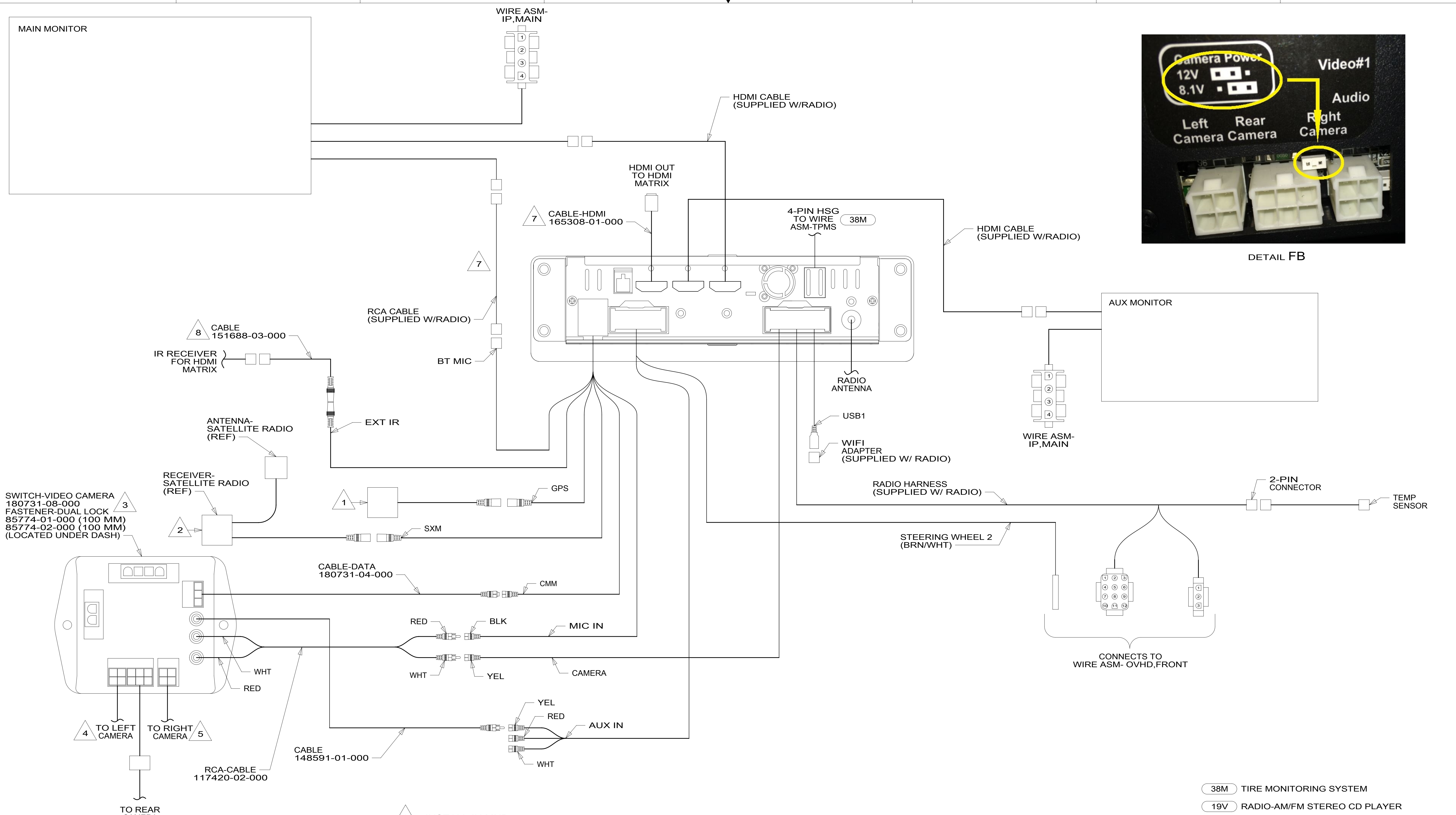
265 CODES/STANDARDS-CSA/CMVSS

1B1 CODES/STANDARDS USA

1B1 265

DESCRIPTION:
WIRING INSTL-FRONT END

SHEET: 5 OF 9 ITEM/PART NO: 000014219 / 31276401000 REV



- NOTES:
- 3 ENSURE CAMERA POWER JUMPER IS IN 12 VOLT POSITION. MOVE TO 12 VOLT POSITION IF NECESSARY. SEE DEAL HB.
 - 2 WIRE TIE RECEIVER-SATELLITE RADIO AND SWITCH-VIDEO CAMERA TO DASH RADIO WIRING BEHIND THE RADIO.
 - 1 MOUNT ON TOP OF CABINET ABOVE RADIO.

- 8 INSTALL IN MHP.
- 7 ROUTE DOWN LEFT A-POST.
- 6 APPLY TAPE 8363-01-000 AS NECESSARY TO SECURE NON-LOCKING CONNECTIONS.
- 5 MARK RIGHT CABLE WITH WHITE TAPE 900000-08-000 NEXT TO CONNECTOR.
- 4 MARK LEFT CABLE WITH YELLOW TAPE 900000-07-000 NEXT TO CONNECTOR.

- 38M TIRE MONITORING SYSTEM
- 19V RADIO-AM/FM STEREO CD PLAYER
- 74L VIDEO CAMERA SYS W/COLOR MON
- 265 CODES/STANDARDS-CSA/CMVSS
- 1B1 CODES/STANDARDS USA

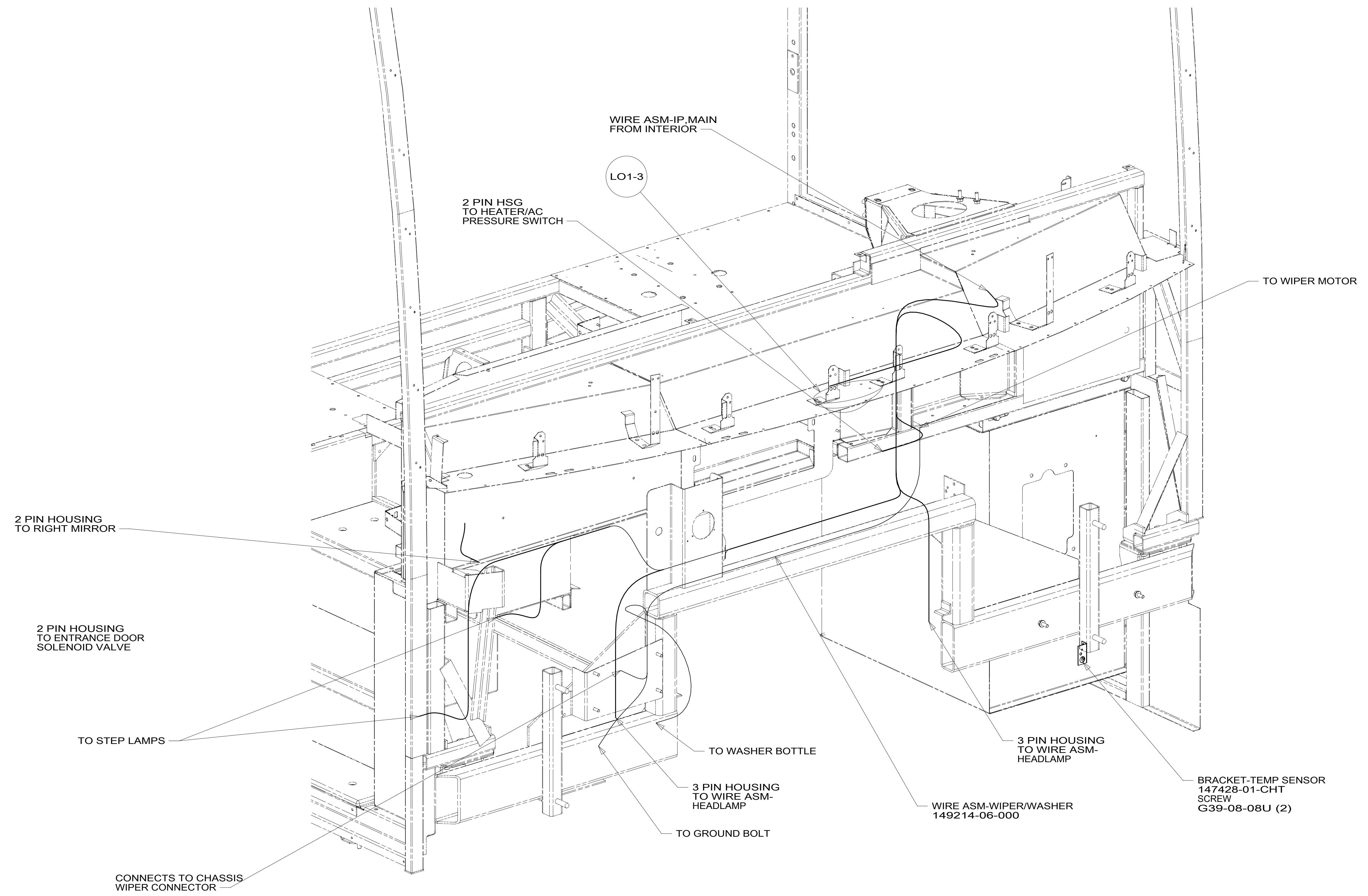
FOR ELECTRICAL TORQUE SPECIFICATIONS SEE DWG NO. 128783-01-000

FOR ELECTRICAL CALLOUTS SEE DWG NO. 121339-01-000

DESCRIPTION:	1B1 265 74L 19V		
WIRING INSTL-FRONT END			
SHEET:	ITEM/PART NO.:	REV	
6 OF 9	000014219 / 31276401000		

8 7 6 5 4 3 2 1

D
C
B
A



VIEW GA

265 CODES/STANDARDS-CSA/CMVSS
 1B1 CODES/STANDARDS USA

FOR ELECTRICAL TORQUE SPECIFICATIONS SEE DWG NO. 128783-01-000

X-X FOR ELECTRICAL CALLOUTS SEE DWG NO. 121339-01-000

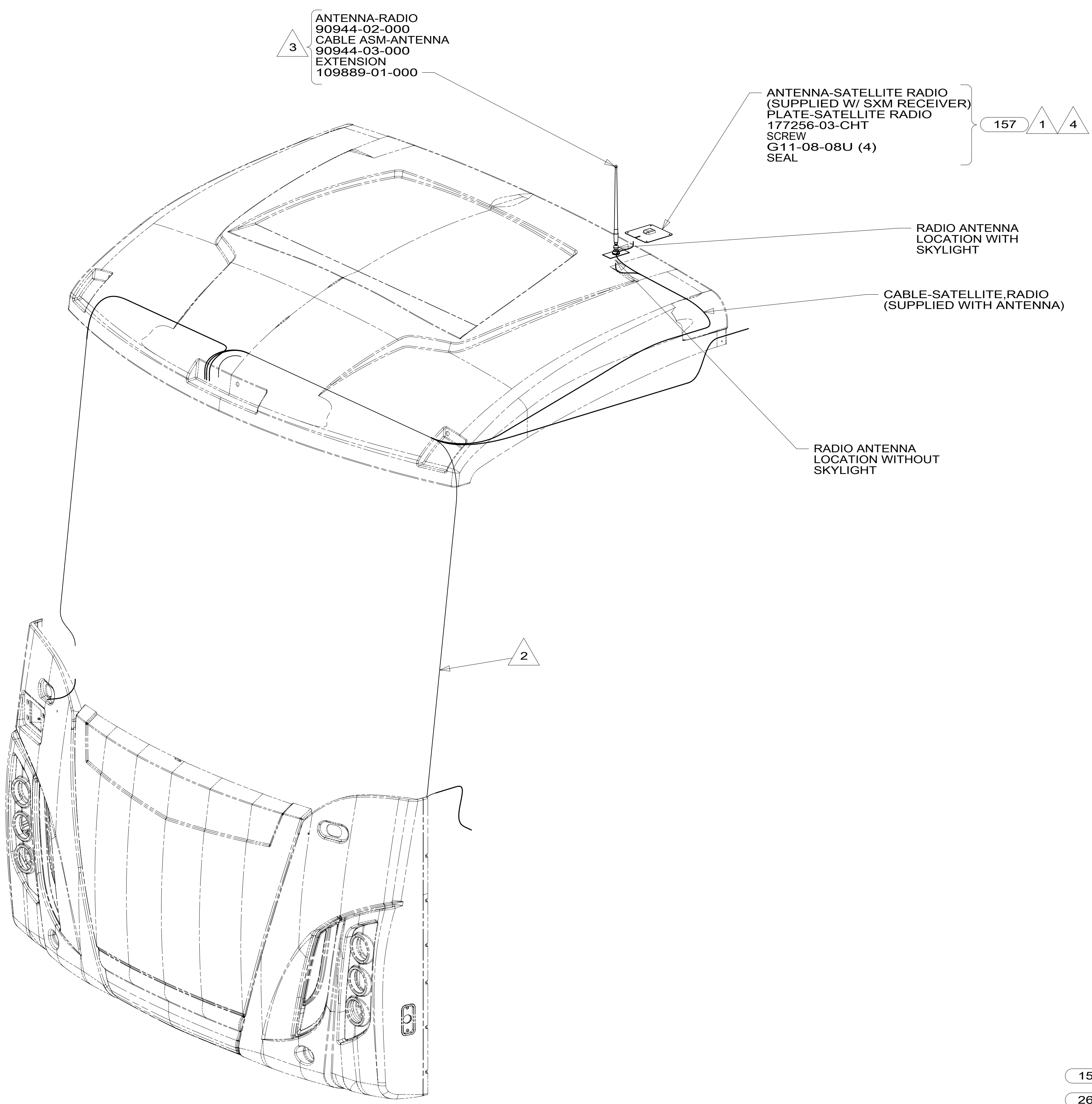
DESCRIPTION: WIRING INSTL-FRONT END		
SHEET: 7 OF 9	ITEM/PART NO: 000014219 / 31276401000	REV
		1 31-Jul-2017

8 7 6 5 4 3 2 1

8 7 6 5 4 3 2 1

D
C
B
A

D
C
B
A



3
 ANTENNA-RADIO
 90944-02-000
 CABLE ASM-ANTENNA
 90944-03-000
 EXTENSION
 109889-01-000

157 1 4
 ANTENNA-SATELLITE RADIO
 (SUPPLIED W/ SXM RECEIVER)
 PLATE-SATELLITE RADIO
 177256-03-CHT
 SCREW
 G11-08-08U (4)
 SEAL

RADIO ANTENNA
 LOCATION WITH
 SKYLIGHT

CABLE-SATELLITE RADIO
 (SUPPLIED WITH ANTENNA)

RADIO ANTENNA
 LOCATION WITHOUT
 SKYLIGHT

2

3

157 INFOTAIN CTR/GPS SIRIUSXM
 265 CODES/STANDARDS-CSA/CMVSS
 1B1 CODES/STANDARDS USA

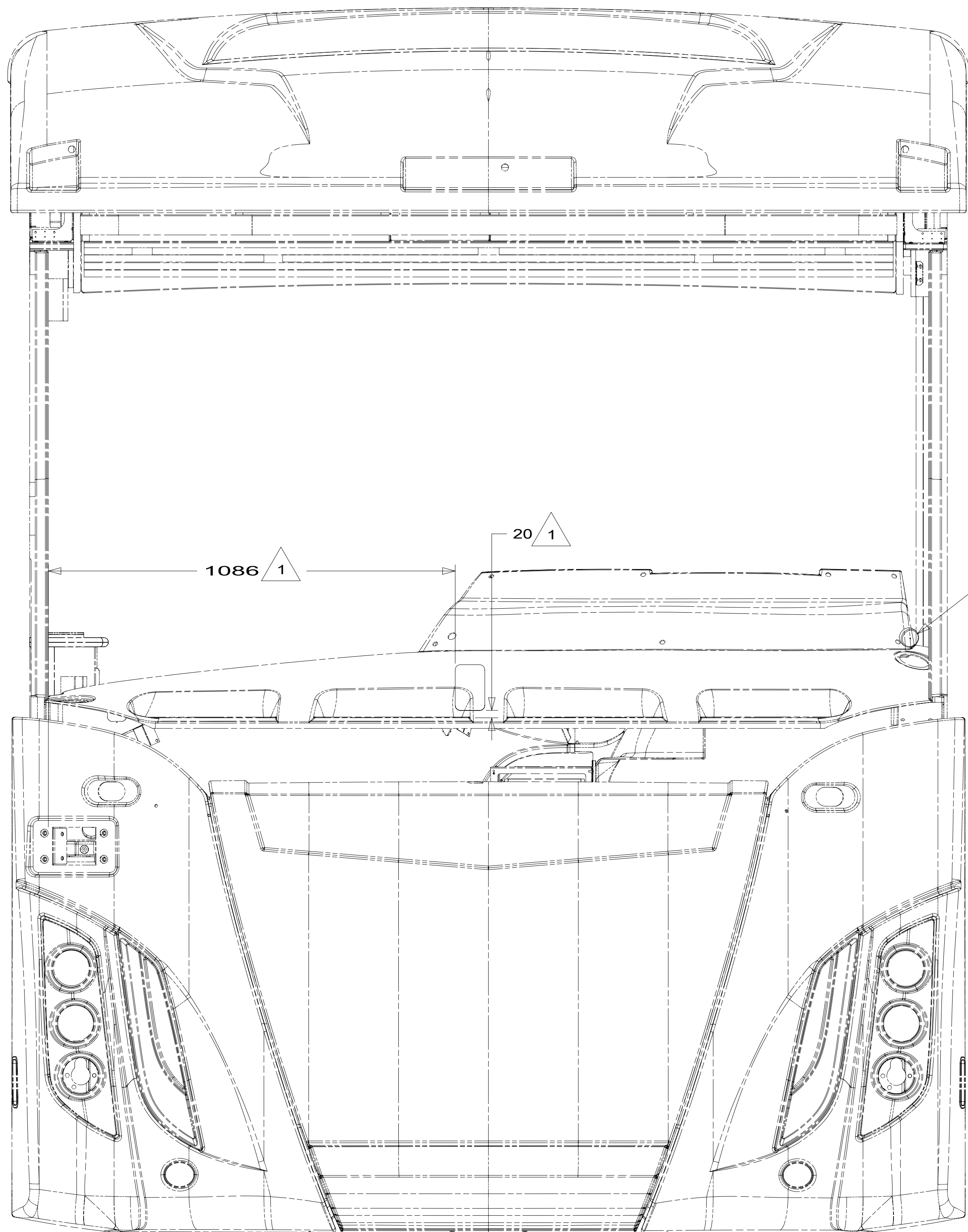
- NOTES:
- 4 LOCATED ON ROOF ASM WITH SKYLIGHT OPTION,
LOCATED ON ROOF CAP WITHOUT SKYLIGHT.
 - 3 SEAL AROUND ANTENNA BASE.
 - 2 ROUTE CABLE ALONG A-POST, UNDER TRIM COVER.
 - 1 MOUNT ANTENNA SUCH THAT BASE IS SQUARE W/REAR
OF ROOF CAP & HOLE IS DIRECTLY OVER HOLE IN
FIBERGLASS. SEAL HOLE IN ROOF CAP, BASE AT SCREWS.

FOR ELECTRICAL
 TORQUE
 SPECIFICATIONS
 SEE DWG NO.
 128783-01-000

X-X FOR
 ELECTRICAL
 CALLOUTS
 SEE DWG NO.
 121339-01-000

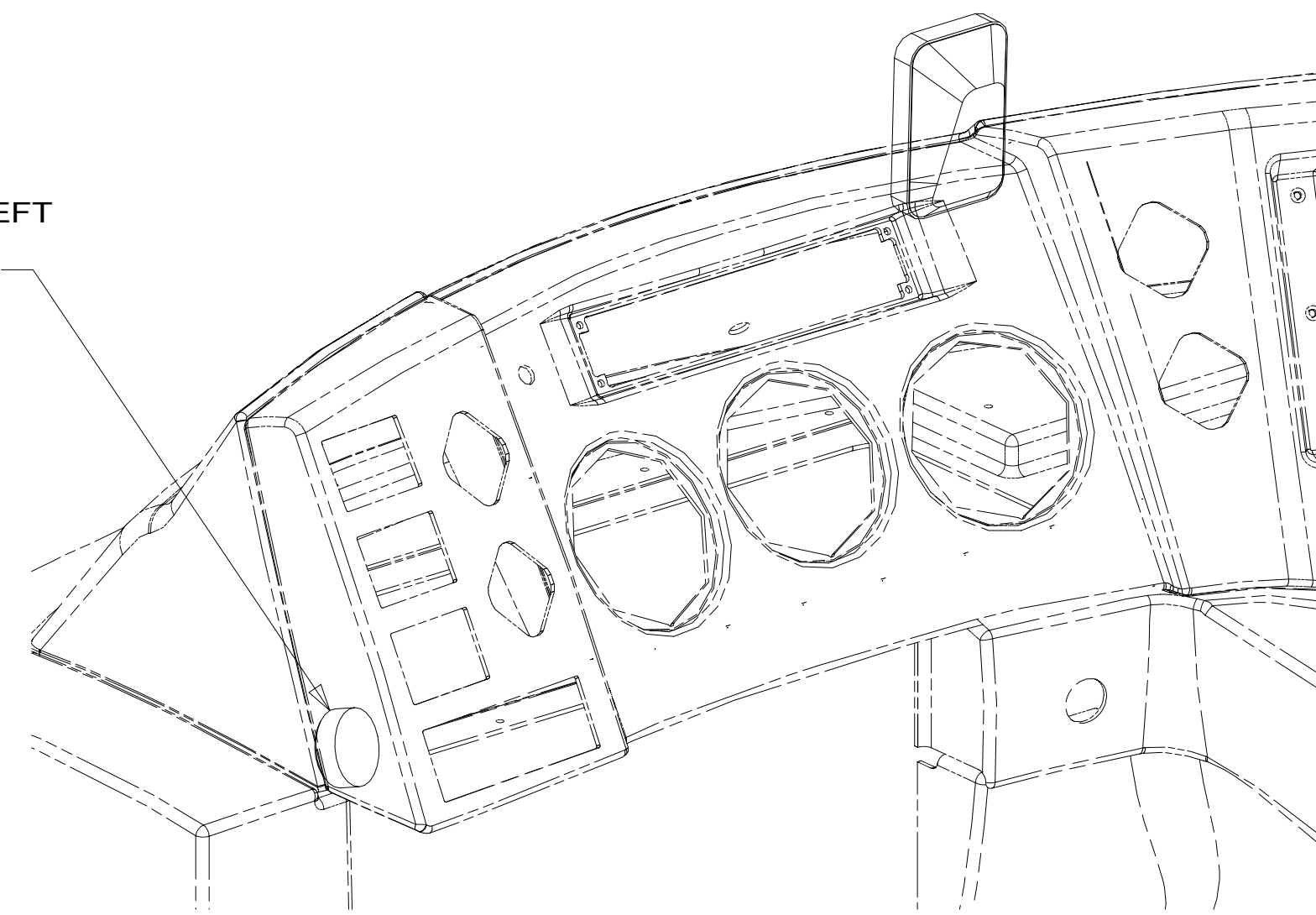
DESCRIPTION:		1B1 265
WIRING INSTL-FRONT END		
SHEET:	ITEM/PART NO:	REV
8 OF 9	000014219 / 31276401000	

8 7 6 5 4 3 2 1 31-Jul-2017

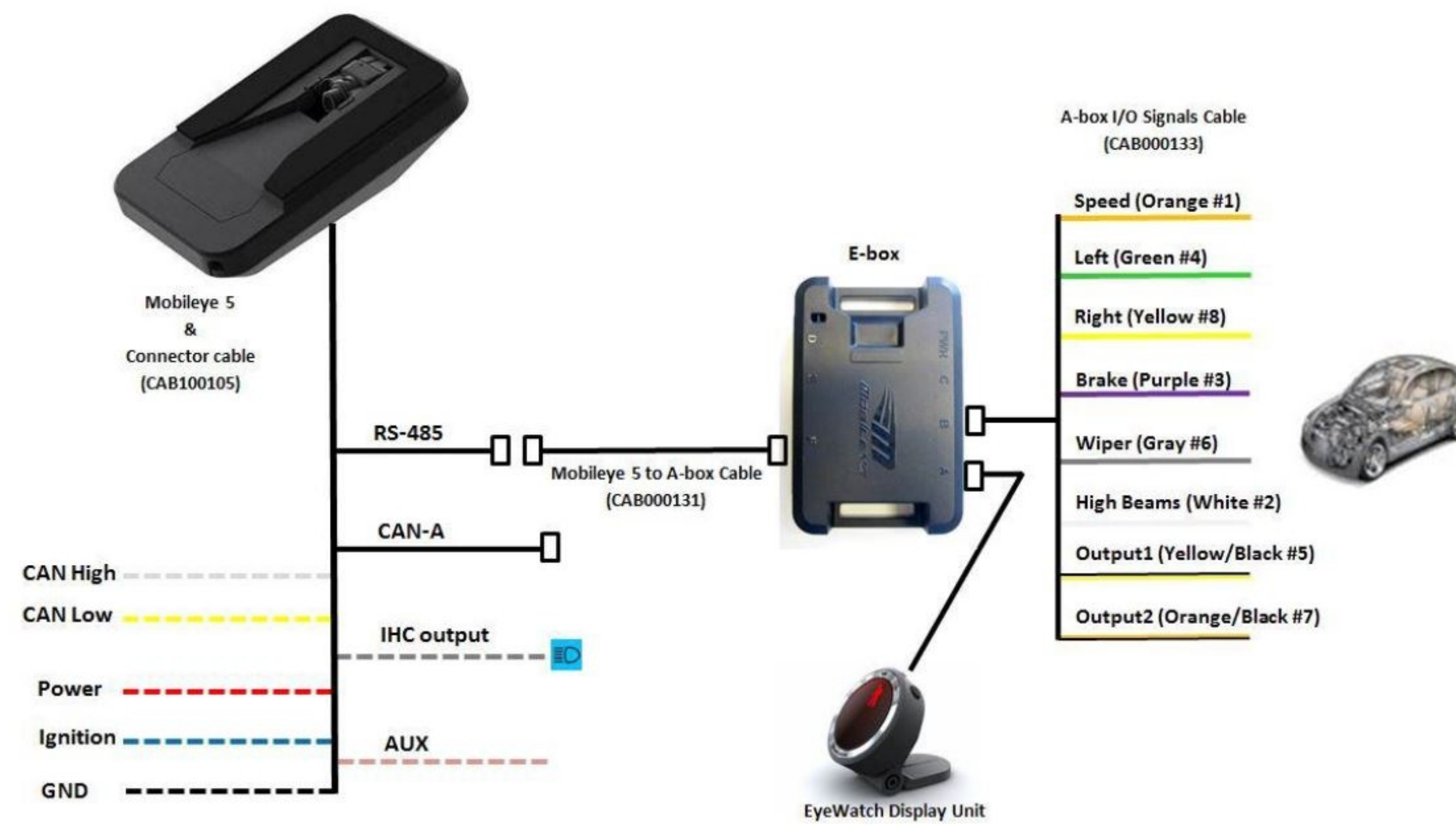


DETAIL JA

MOUNT ON TOP OF DASH POD LEFT OF CLUSTER. ROUTE CABLE IN SEAM UNDER REMOVEABLE TOP.



DETAIL JB



MOBILEYE CONNECTION DIAGRAM

1 ALL DIMENSIONS FROM BLACK LINE IN WINDSHIELD REF DIMENSION: CAMERA TO BE MOUNTED 50 MM RIGHT OF CENTER OF COACH AND 30 MM ABOVE DASH AT WINDSHIELD.

NOTES:

265 CODES/STANDARDS-CSA/CMVSS

1B1 CODES/STANDARDS USA

FOR ELECTRICAL TORQUE SPECIFICATIONS SEE DWG NO. 128783-01-000

X-X FOR ELECTRICAL CALLOUTS SEE DWG NO. 121339-01-000

1B1 265 DESCRIPTION: WIRING INSTL-FRONT END

SHEET: 9 OF 9 ITEM/PART NO: 000014219 / 31276401000 REV