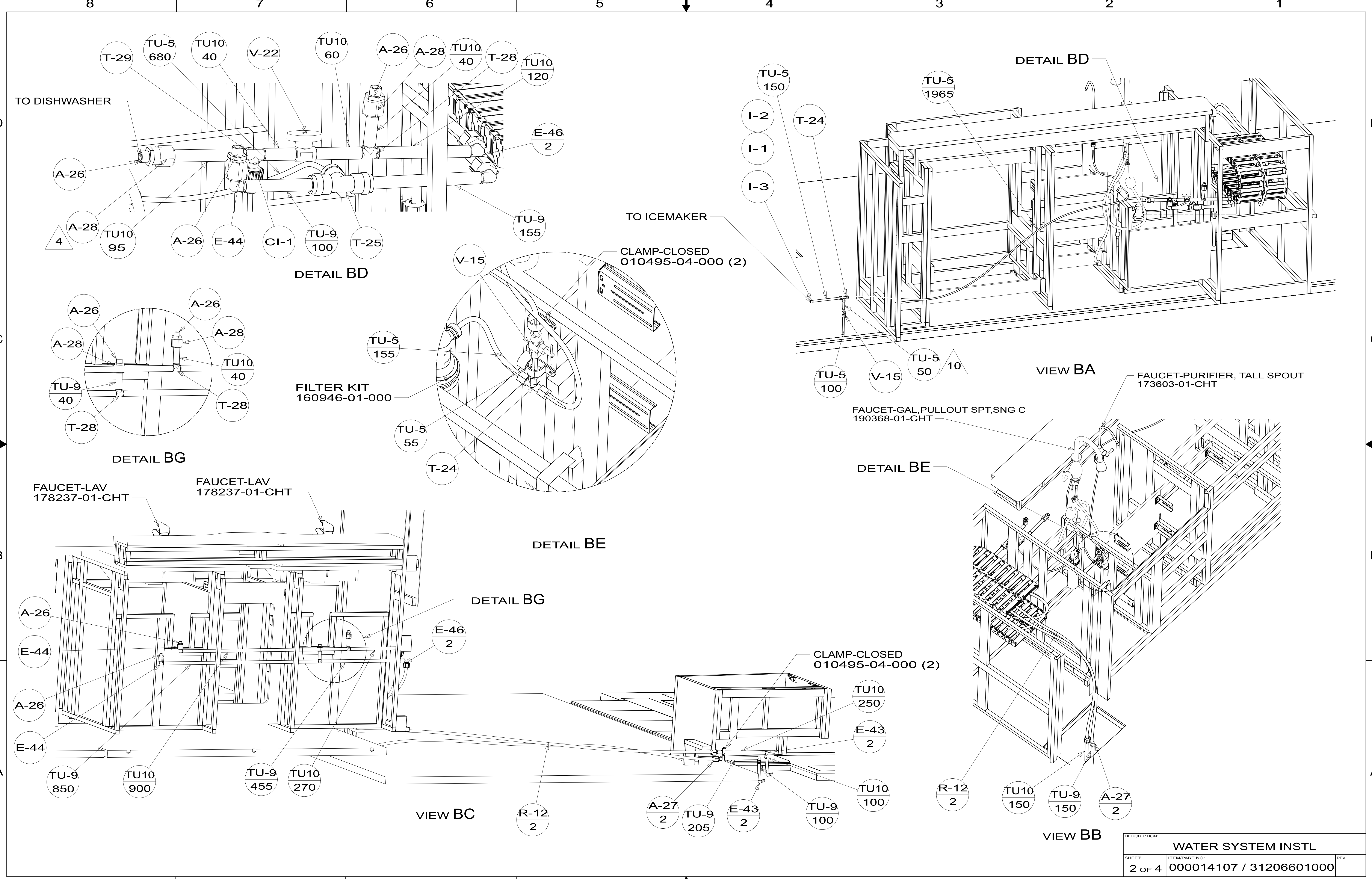


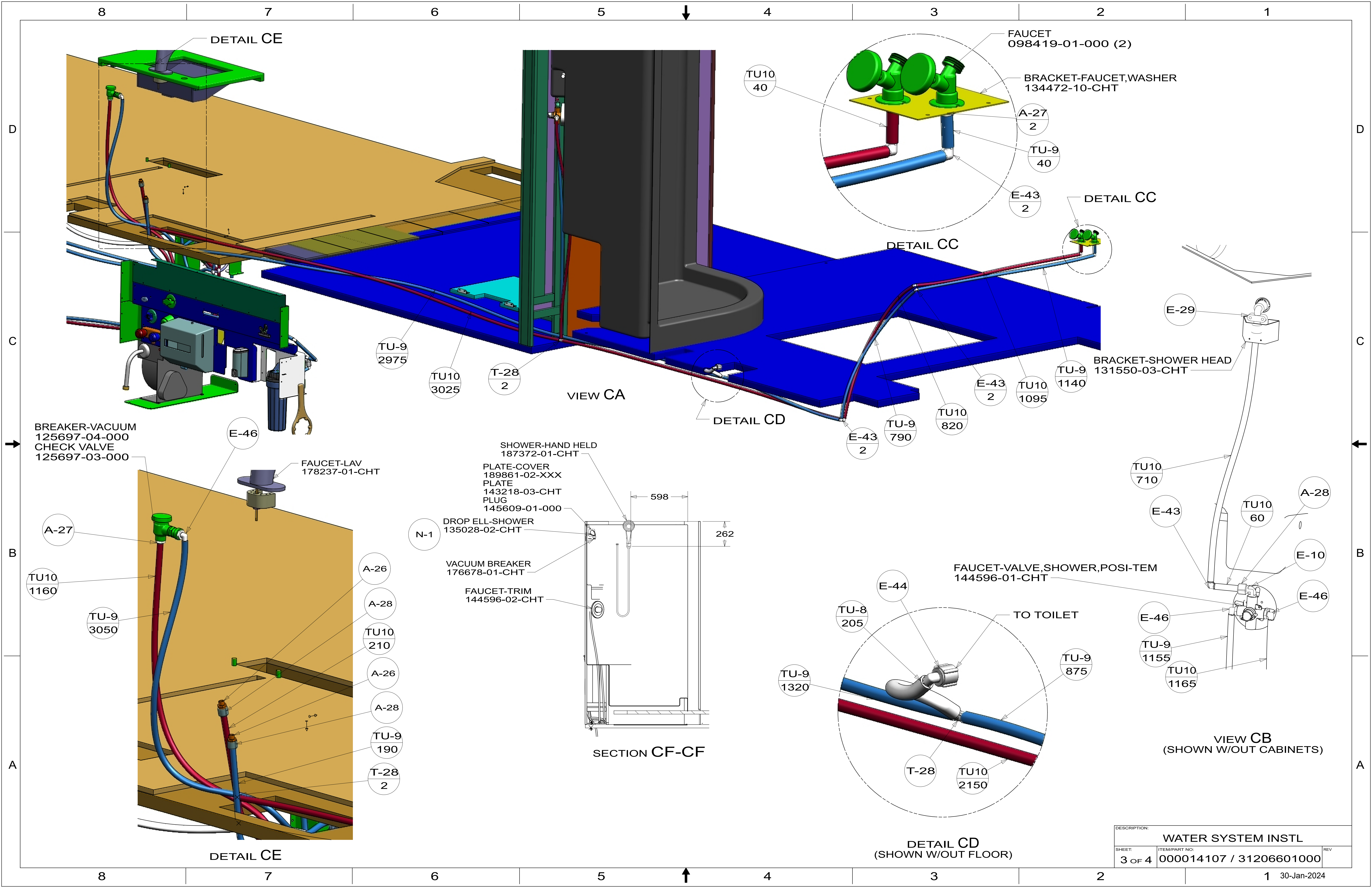
14. FOR INSTALLATION USE SILICON-ADHESIVE 131264-05-CHT. APPLY ON TOP OF PLATE, PLACE COVER ON, AND PUT ADHESIVE AROUND COVER.
13. INSTALL FAUCET WITHOUT BASEPLATE.
12. SEE STYLING SHEETS.
11. REQUIRES 5 GALLONS OF 182955-01-000 ANTIFREEZE FOR WINTERIZATION.
10. VALVE MUST REMAIN OPEN AFTER WATER TEST.
9. FLUSHING SYSTEM REQUIRES 125697-06-000 INSTRUCTION SHEET.
8. ALL CRIMP FITTINGS TO PEX TUBING REQUIRE 1/2" CLAMP 140171-03-000.
7. ALL CRIMP FITTINGS TO PEX TUBING REQUIRE 5/8" CLAMP 140171-04-000.
6. LABEL HOT AND COLD SUPPLY TUBES AND TAPE FITTING TO TUBE BEFORE CABINET SET TO PREVENT MOVEMENT.
5. ADD PIPE WRAP (LADDER SCRAP 110157-02-000) INSULATION.
4. ADD TEFLON TAPE 010405-02-000.
3. ALL TUBING TO BE SECURED AT 1200 INTERVALS MAXIMUM WITH CLAMP 010495-01-000 AND SCREW 000G67-10-12U OR EQUIVALENT.
2. TUBING TO BE INSTALLED WITH SUFFICIENT SLOPE TO PROVIDE DRAINAGE TO NEAREST VALVE.
1. PLASTIC FITTINGS TO BE SEALED WITH SEALANT 084456-01-000.

NOTES:

<b>WINNEBAGO</b> <sup>®</sup>		
COPYRIGHT 2024 WINNEBAGO INDUSTRIES, INC.		
DSNR:	ALL DIMENSIONS ARE IN MILLIMETERS	
DFTR:		
UNSPECIFIED TOLERANCES:	MATERIAL:	
WHOLE DIM (X) :	3	
ONE-PLACE (X.X) :	1.5	
TWO-PLACE (X.XX) :	0.50	
ANGLE :	1°	
REFER TO ES0018 FOR FASTENER TIGHTENING GUIDELINES	WEIGHT: (LBS)	FIRST USED: (REF)
		17 R45RD
DESCRIPTION: <b>WATER SYSTEM INSTL</b>		
SHEET:	ITEM/PART NO.:	REV:
1 OF 4	000014107 / 31206601000	
REF:		1 30-Jan-2024



DESCRIPTION:		
<b>WATER SYSTEM INSTL</b>		
SHEET:	ITEM/PART NO.:	REV:
2 OF 4	000014107 / 31206601000	



DETAIL CE

FAUCET  
098419-01-000 (2)

BRACKET-FAUCET,WASHER  
134472-10-CHT

TU10  
40

A-27  
2

TU-9  
40

E-43  
2

DETAIL CC

DETAIL CC

E-29

BRACKET-SHOWER HEAD  
131550-03-CHT

TU-9  
2975

TU10  
3025

T-28  
2

VIEW CA

DETAIL CD

E-43  
2

TU-9  
790

TU10  
820

TU-9  
1140

TU10  
1095

BREAKER-VACUUM  
125697-04-000  
CHECK VALVE  
125697-03-000

E-46

FAUCET-LAV  
178237-01-CHT

SHOWER-HAND HELD  
187372-01-CHT

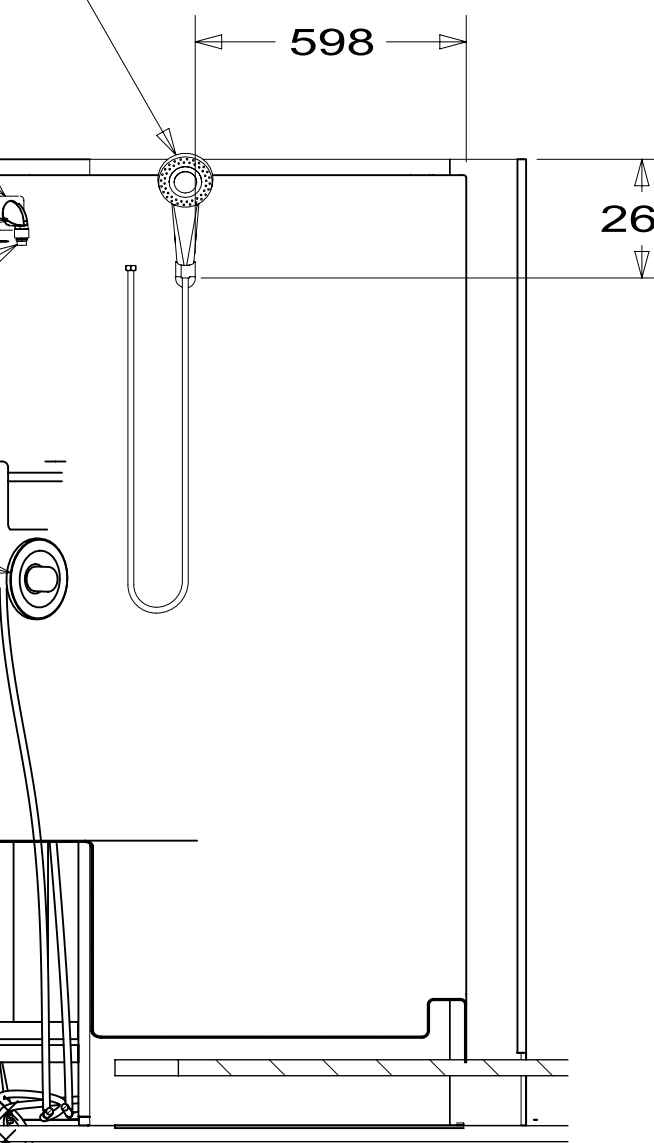
PLATE-COVER  
189861-02-XXX  
PLATE  
143218-03-CHT  
PLUG  
145609-01-000

DROP ELL-SHOWER  
135028-02-CHT

VACUUM BREAKER  
176678-01-CHT

FAUCET-TRIM  
144596-02-CHT

N-1



SECTION CF-CF

TU10  
710

E-43

TU10  
60

A-28

E-10

E-46

FAUCET-VALVE,SHOWER,POSI-TEM  
144596-01-CHT

TO TOILET

E-44

TU-8  
205

TU-9  
875

TU-9  
1320

T-28

TU10  
2150

E-46

TU-9  
1155

TU10  
1165

VIEW CB  
(SHOWN W/OUT CABINETS)

A-27

TU10  
1160

TU-9  
3050

A-26

A-28

TU10  
210

A-26

A-28

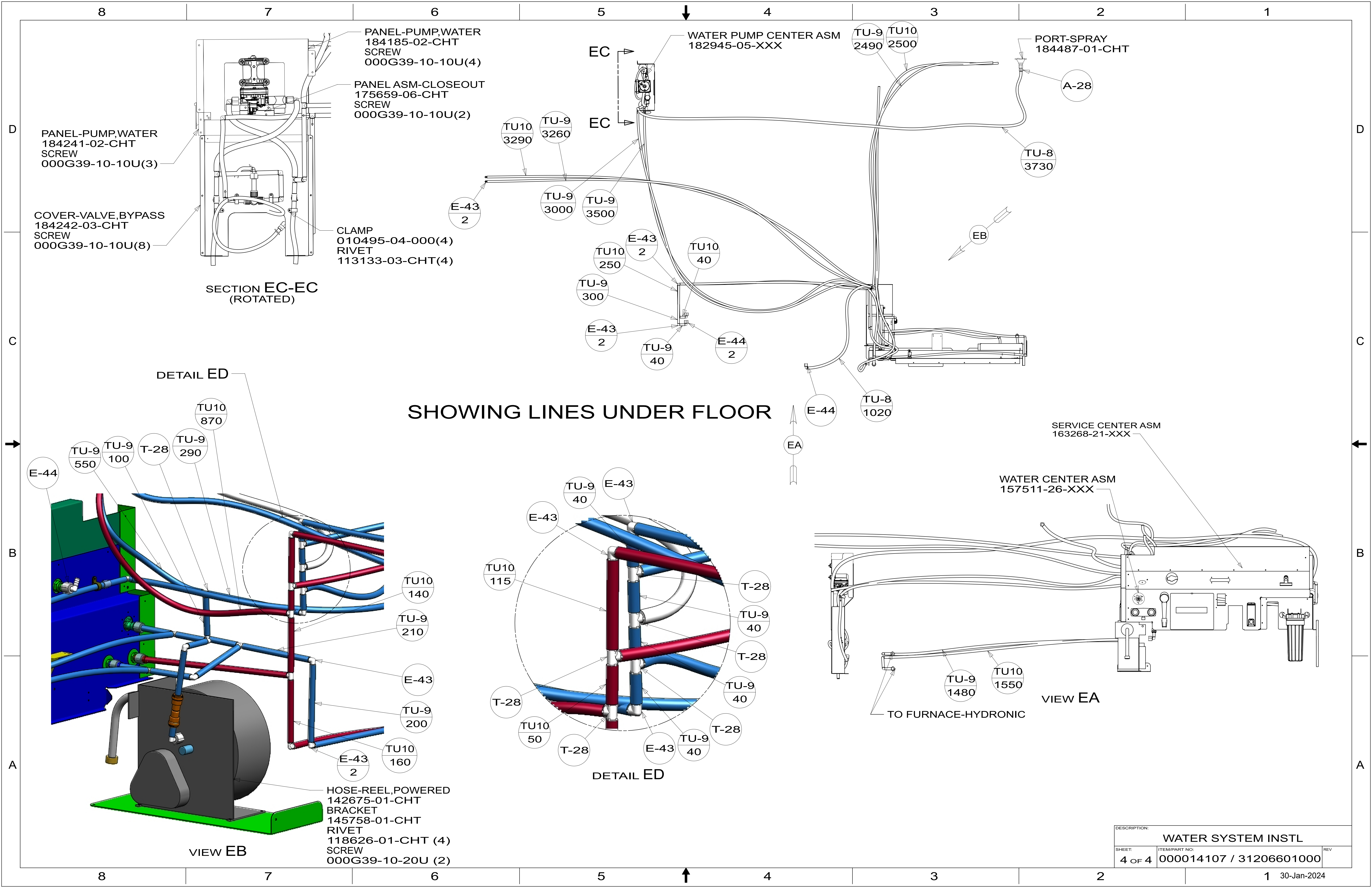
TU-9  
190

T-28  
2

DETAIL CE

DETAIL CD  
(SHOWN W/OUT FLOOR)

DESCRIPTION: WATER SYSTEM INSTL		
SHEET: 3 OF 4	ITEM/PART NO: 000014107 / 31206601000	REV
		30-Jan-2024



DESCRIPTION:		
WATER SYSTEM INSTL		
SHEET:	ITEM/PART NO.:	REV
4 OF 4	000014107 / 31206601000	