

- ▲ 8 SECURE SO WIRES DO NOT CONTACT EXHAUST.
  - ▲ 7 SUPPLIED WITH CHASSIS.
  - ▲ 6 SEE WIRING INSTL-FRONT END FOR ADDITIONAL INFORMATION.
  - ▲ 5 SEE BATTERY INSTL FOR ADDITIONAL INFORMATION.
  - ▲ 4 CLAMP 83610-03-000, SCREW G39-08-12B.
  - ▲ 3 CLAMP 83610-01-000, SCREW G39-08-12B.
  - ▲ 2 COVER SHARP EDGES WHERE WIRE CROSSES FRAME RAILS.
1. SECURE CONDUIT 41953-09, -10, -11, -13, AND -14 OVER ALL WIRES IN CONTACT WITH SHARP EDGES.

NOTES:

FOR ELECTRICAL TORQUE SPECIFICATIONS SEE DWG NO. 128783-01-000

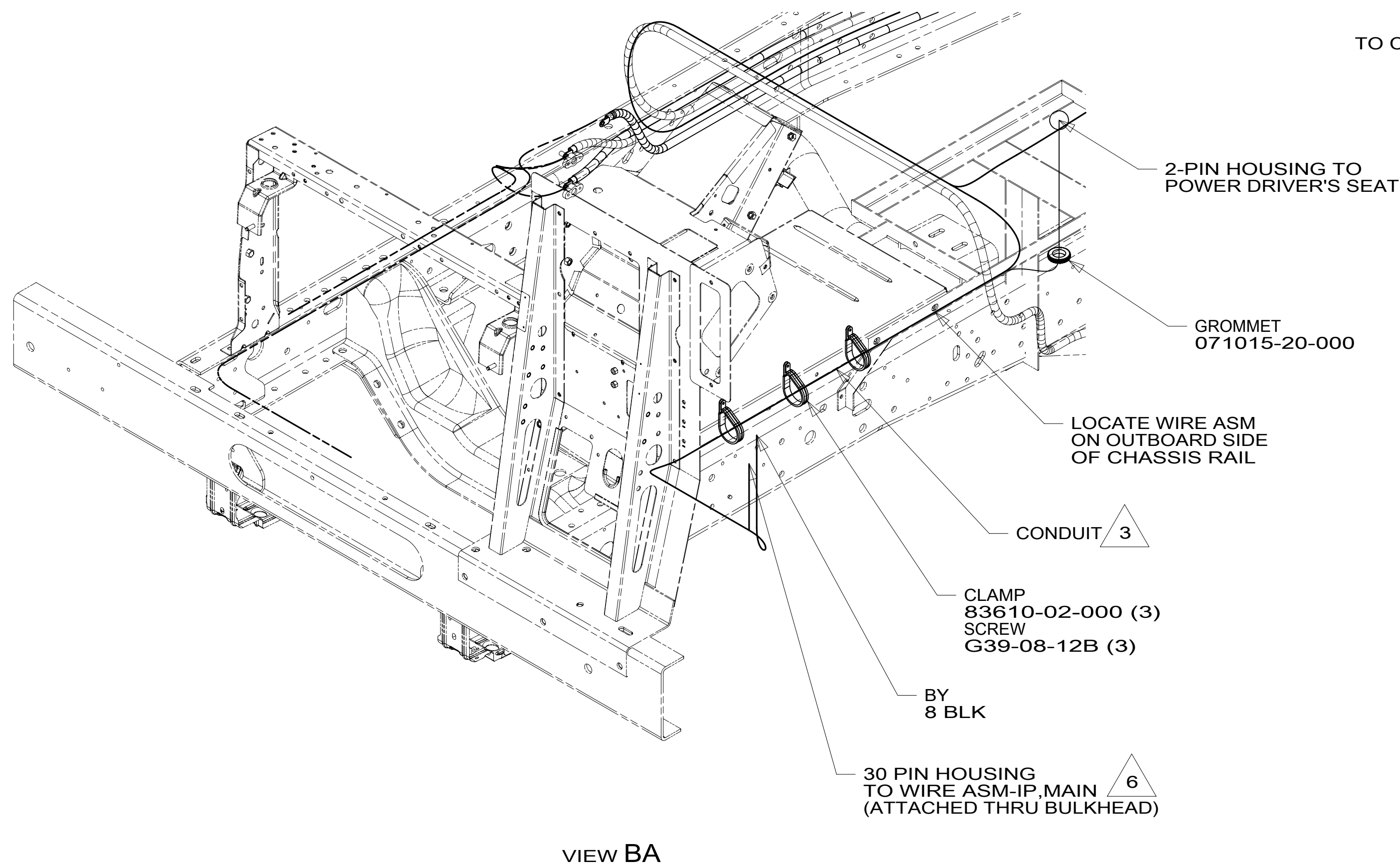
FOR ELECTRICAL CALLOUTS SEE DWG NO. 121339-01-000

- 16Z FORD 24,000#-22.5 ALUM WHEEL
- 265 CODES/STANDARDS-CSA/CMVSS
- 1B1 CODES/STANDARDS USA

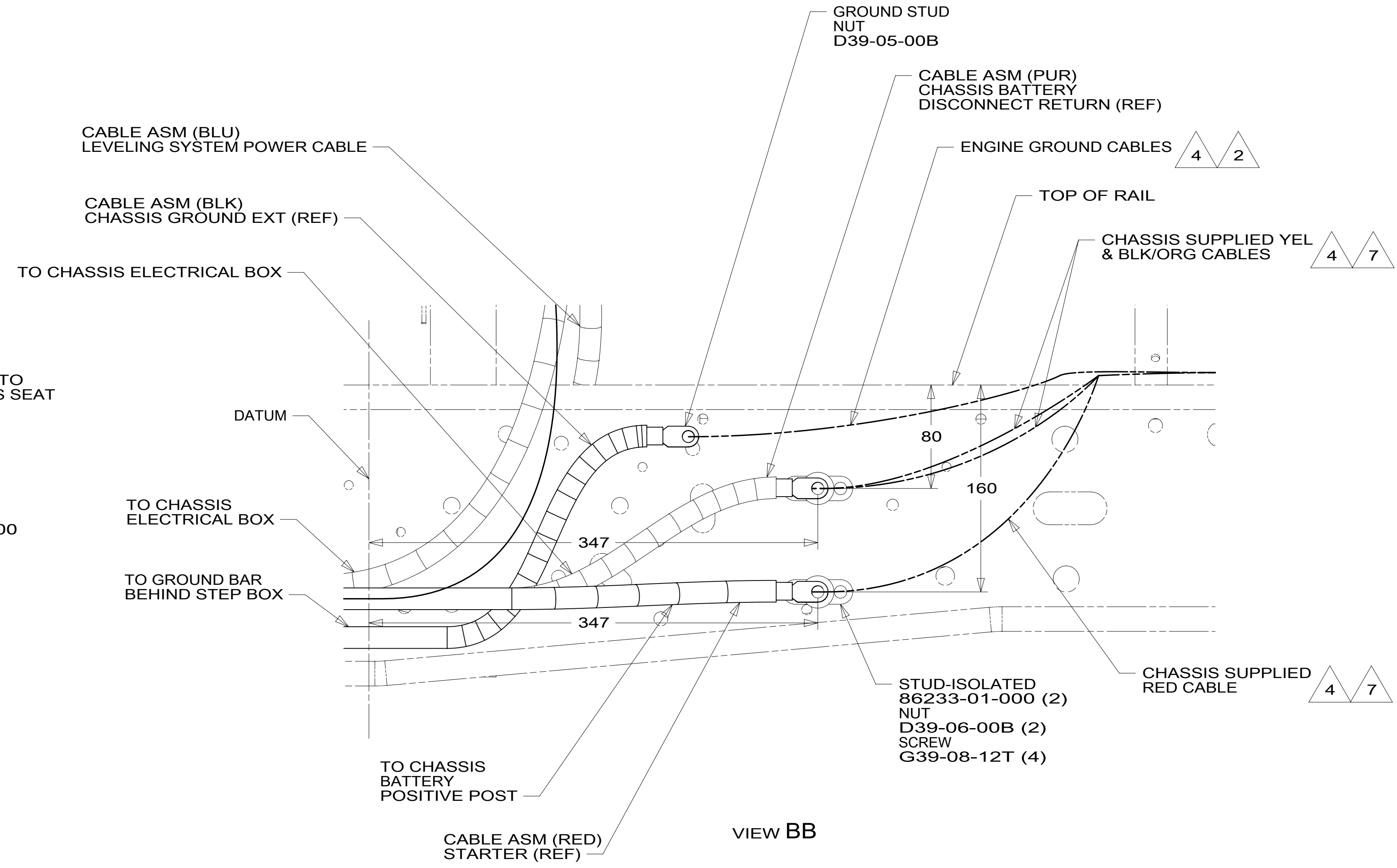
1B1 265 16Z

**WINNEBAGO**  
COPYRIGHT 2016 WINNEBAGO INDUSTRIES, INC.

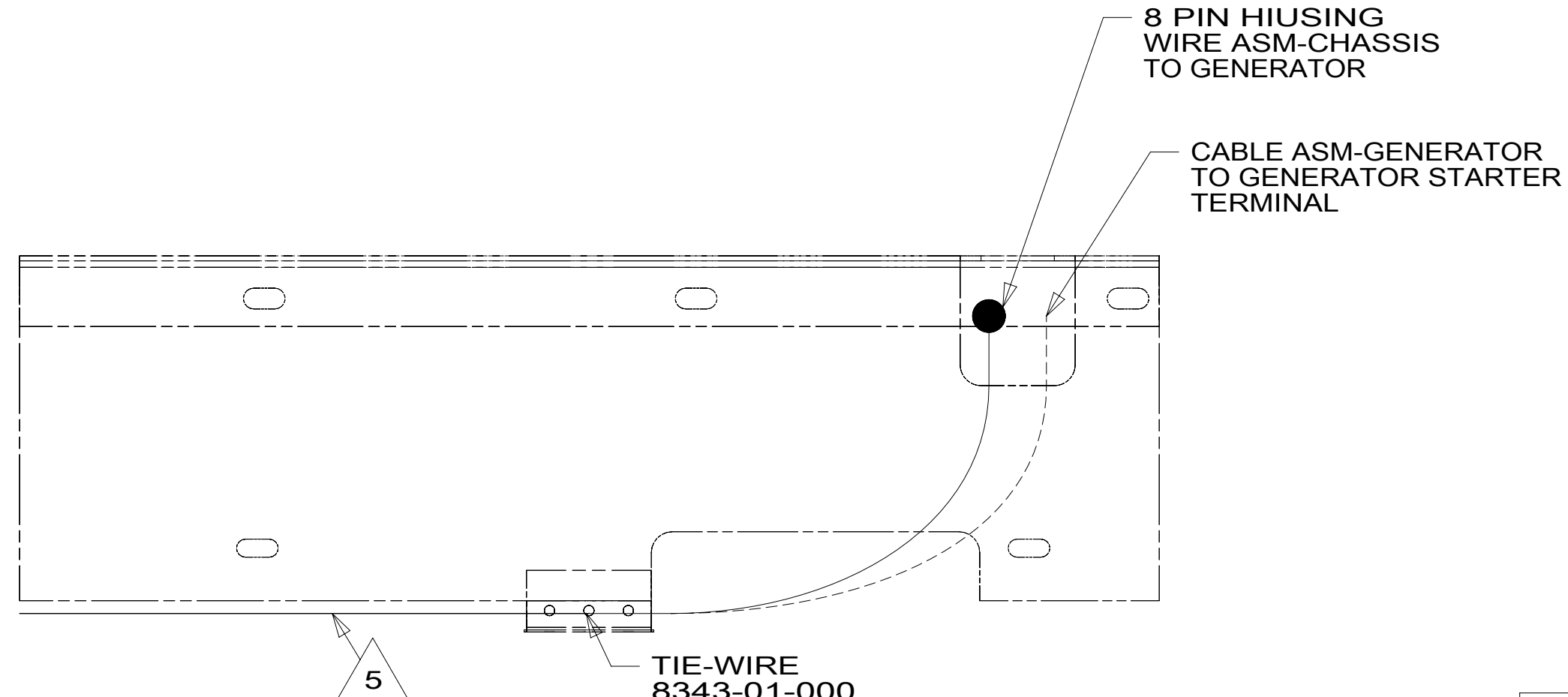
DSNR:	ALL DIMENSIONS ARE IN MILLIMETERS	
DFFR:		
UNSPECIFIED TOLERANCES:	MATERIAL:	
WHOLE DIM (X) : 3		
ONE-PLACE (X.X) : 1.5		
TWO-PLACE (X.XX) : 0.50		
ANGLE : 1°		
REFER TO ES0018 FOR FASTENER TIGHTENING GUIDELINES	WEIGHT: (LBS)	FIRST USED:
		17 J37F
DESCRIPTION: <b>WIRING INSTL-CHASSIS</b>		
SHEET: 1 OF 2	ITEM/PART NO: 000013759 / 31178301000	REV:
	REF:	1 13-Dec-2016



VIEW BA



VIEW BB



VIEW BC

- 7 CUT CHASSIS SUPPLIED POSITIVE BATTERY CABLE 150MM FROM BATTERY TERMINAL END, DISCARD TERMINAL END AND SEPARATE WIRES. ADD TERMINAL 8348-01-000 AND HEAT SHRINK 176567-04-000 TO RED CABLE (CHASSIS STARTER) AND COMBINE YELLOW (CHASSIS POWER DISTRIBUTION) AND BLACK/ORANGE (CHASSIS ALTERNATOR) WIRES TOGETHER AND ADD TERMINAL 8348-01-000 AND HEAT SHRINK 176567-02-000. COIL EXCESS CABLE ALONG FRAME RAIL JUST BEHIND RADIATOR AND TIE UP WITH TIE-WIRE 8343-04-000.
  - 6 SEE WIRING INSTL-FRONT END FOR ADDITIONAL INFORMATION.
  - 5 SECURE SO WIRES DO NOT CONTACT EXHAUST.
  - 4 SUPPLIED WITH CHASSIS.
  - 3 COVER WITH CONDUIT 41953-10-000 AND 41953-11-000 AS REQUIRED.
  - 2 CUT CHASSIS SUPPLIED BATTERY CABLE 700MM FROM BATTERY TERMINAL AND ADD TERMINAL 8348-01-000 TO CUT END.
1. SECURE CONDUIT 41953-09, -10, -11, -13, AND -14 OVER ALL WIRES IN CONTACT WITH SHARP EDGES.

NOTES:

- 16Z FORD 24,000#-22.5 ALUM WHEEL
- 265 CODES/STANDARDS-CSA/CMVSS
- 1B1 CODES/STANDARDS USA

FOR ELECTRICAL TORQUE SPECIFICATIONS SEE DWG NO. 128783-01-000

FOR ELECTRICAL CALLOUTS SEE DWG NO. 121339-01-000

DESCRIPTION: <b>WIRING INSTL-CHASSIS</b>		
SHEET: 2 OF 2	ITEM/PART NO: 000013759 / 31178301000	REV