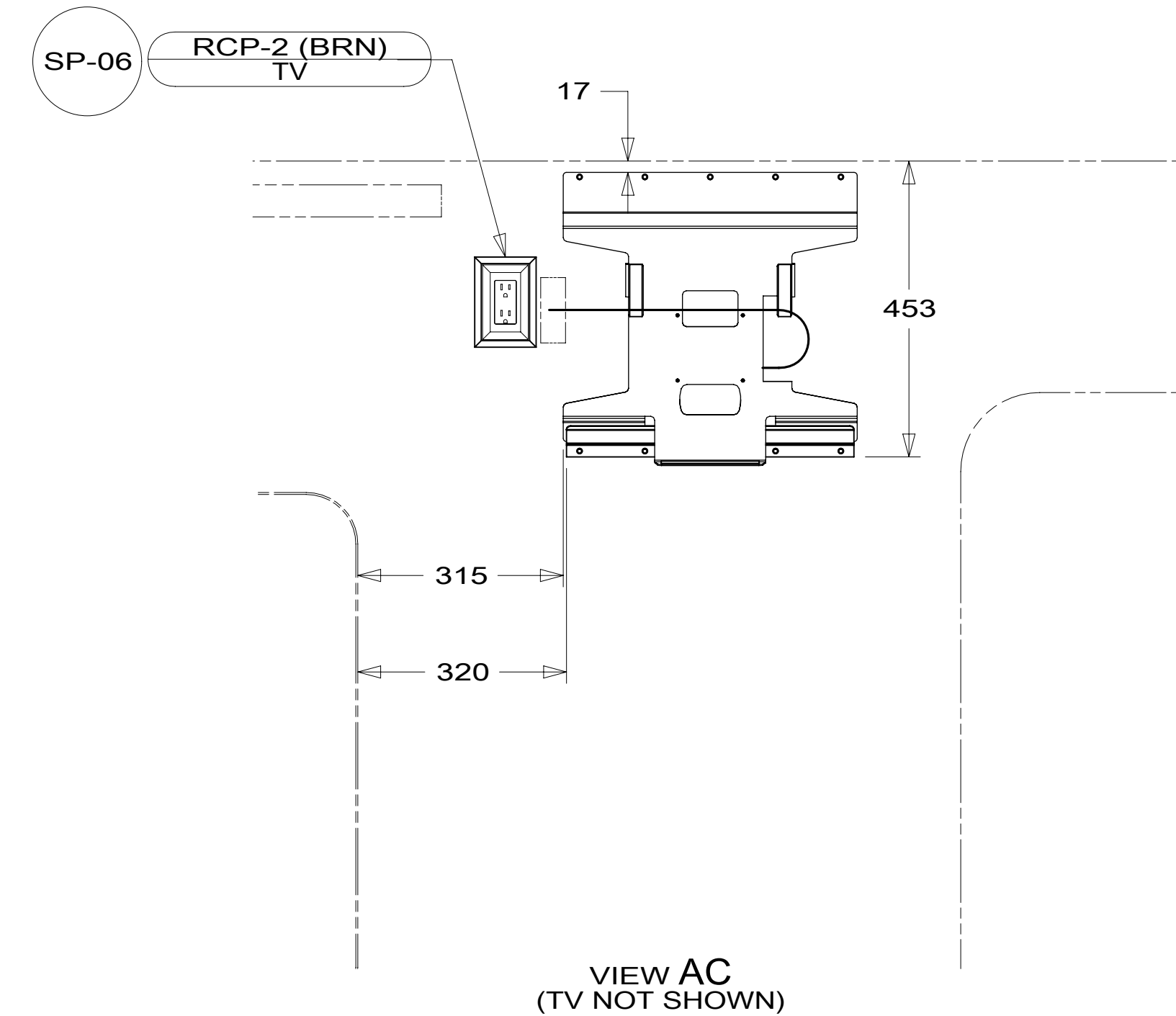
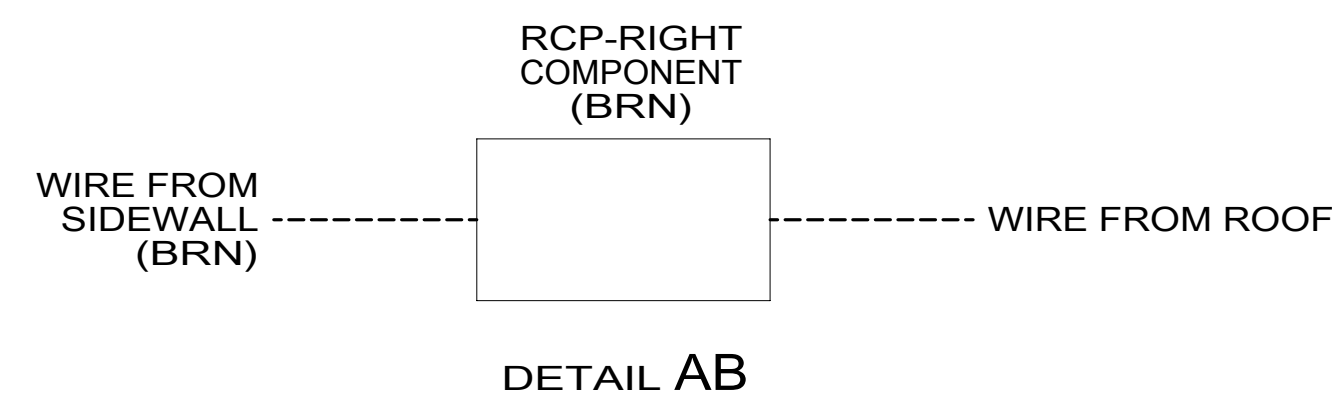


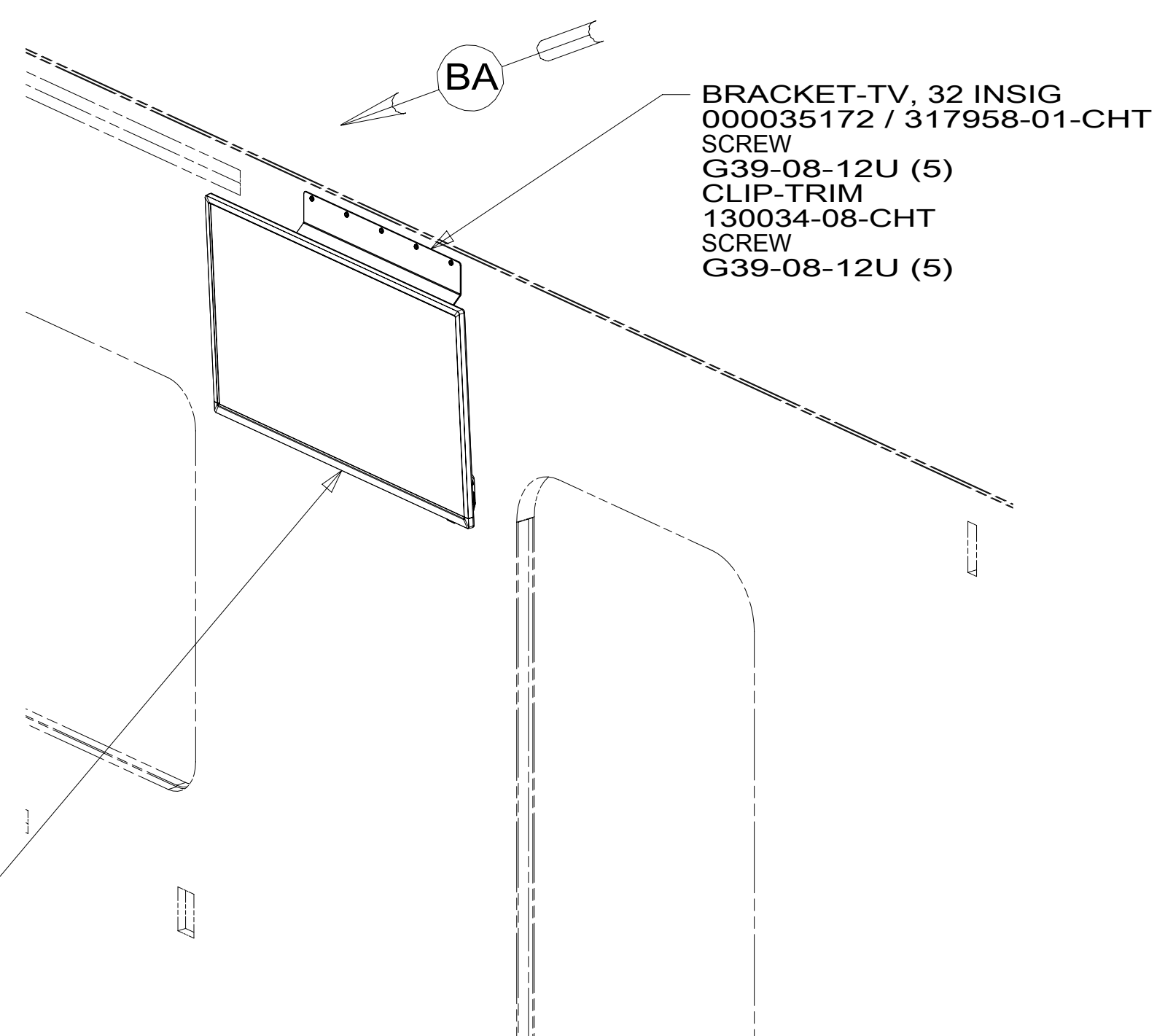
VIEW AA



VIEW AC
(TV NOT SHOWN)



DETAIL AB



VIEW BA

- TV-32" HDTV
000031285 / 316939-01-000
- SCREW
OMG02U-04-012 (4)
- WASHER
OME02U-04-071 (4)
- TAPE-FOAM
076322-22-000 (2 X 80 MM)
- TAPE-FOAM
076322-23-000 (150 MM)

4

4 PREP BOTH SURFACES WITH ADHESIVE-PROMOTER, 087211-01-000.

3. WHERE WIRES PASS THROUGH HOLES IN STEEL AND NOT OTHERWISE PROTECTED, USE GROMMET 92908-02-000.
2. ALL WIRES TO BE SECURED WITH CLAMP 10495-01-000 OR CLIP 80734-01-000 EVERY 600MM. USE SCREW G67-10-12B UNLESS OTHERWISE SPECIFIED.
1. 110V WIRE TO BE CLAMPED WITH CLAMP 10497-05-000 WITHIN 200MM OF OUTLET BOXES, USE SCREW G67-10-12B.

NOTES:

FOR ELECTRICAL TORQUE SPECIFICATIONS SEE DWG NO. 128783-01-000

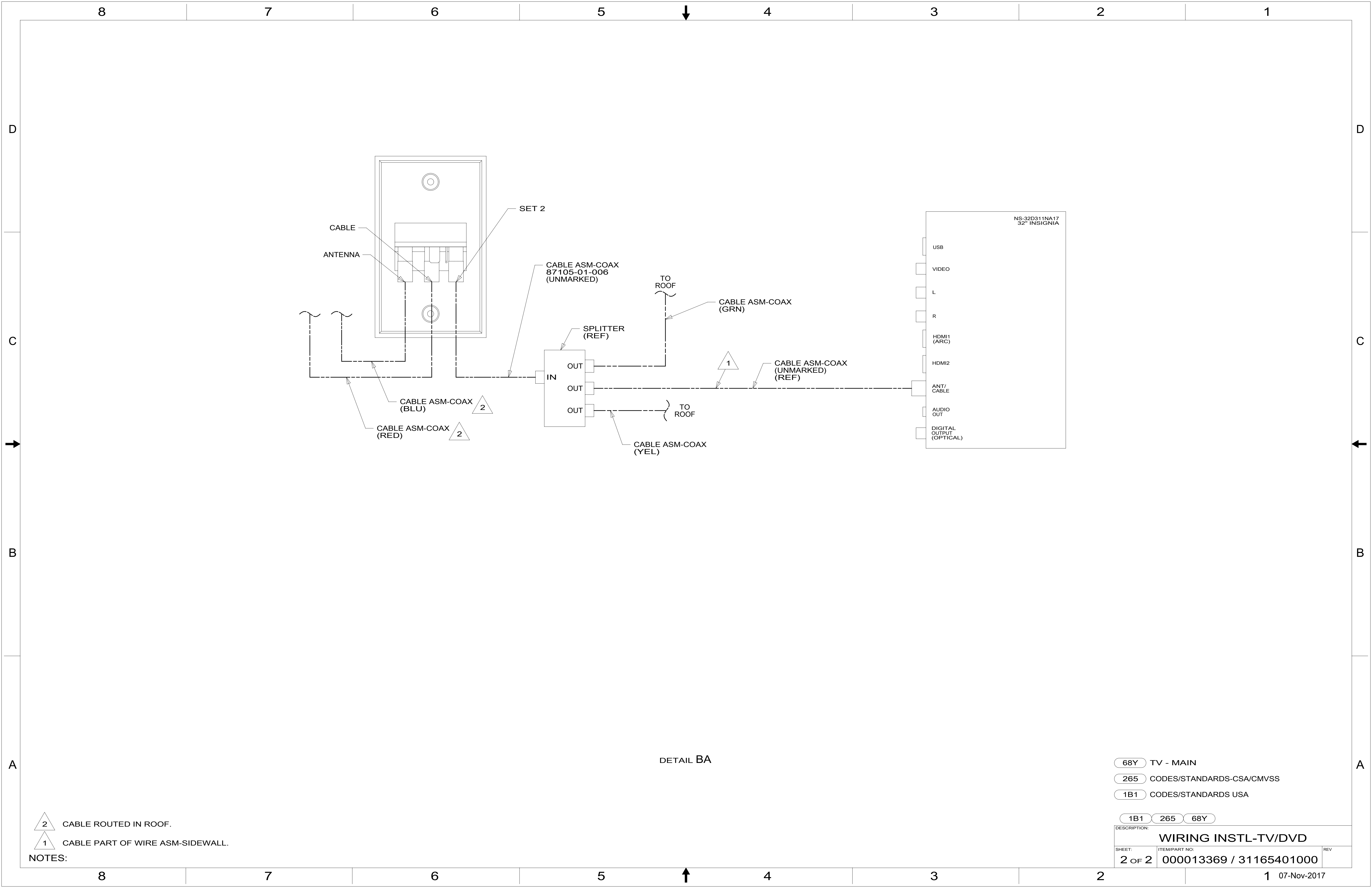
FOR ELECTRICAL CALLOUTS SEE DWG NO. 121339-01-000

- 68Y TV - MAIN
- 265 CODES/STANDARDS-CSA/CMVSS
- 1B1 CODES/STANDARDS USA

1B1 265 68Y



DSNR:		ALL DIMENSIONS ARE IN MILLIMETERS	
DFFR:		MATERIAL:	
UNSPECIFIED TOLERANCES:			
WHOLE DIM (X)	: 3		
ONE-PLACE (X.X)	: 1.5		
TWO-PLACE (X.XX)	: 0.50		
ANGLE	: 1°		
REFER TO ES0018 FOR FASTENER TIGHTENING GUIDELINES		WEIGHT: (LBS)	FIRST USED:
			17 E26HE
DESCRIPTION:			
WIRING INSTL-TV/DVD			
SHEET:	ITEM/PART NO.:	REV:	
1 OF 2	000013369 / 31165401000		



- 2 CABLE ROUTED IN ROOF.
- 1 CABLE PART OF WIRE ASM-SIDEWALL.

NOTES:

DETAIL BA

- 68Y TV - MAIN
- 265 CODES/STANDARDS-CSA/CMVSS
- 1B1 CODES/STANDARDS USA

1B1 265 68Y		
DESCRIPTION: WIRING INSTL-TV/DVD		
SHEET: 2 OF 2	ITEM/PART NO: 000013369 / 31165401000	REV