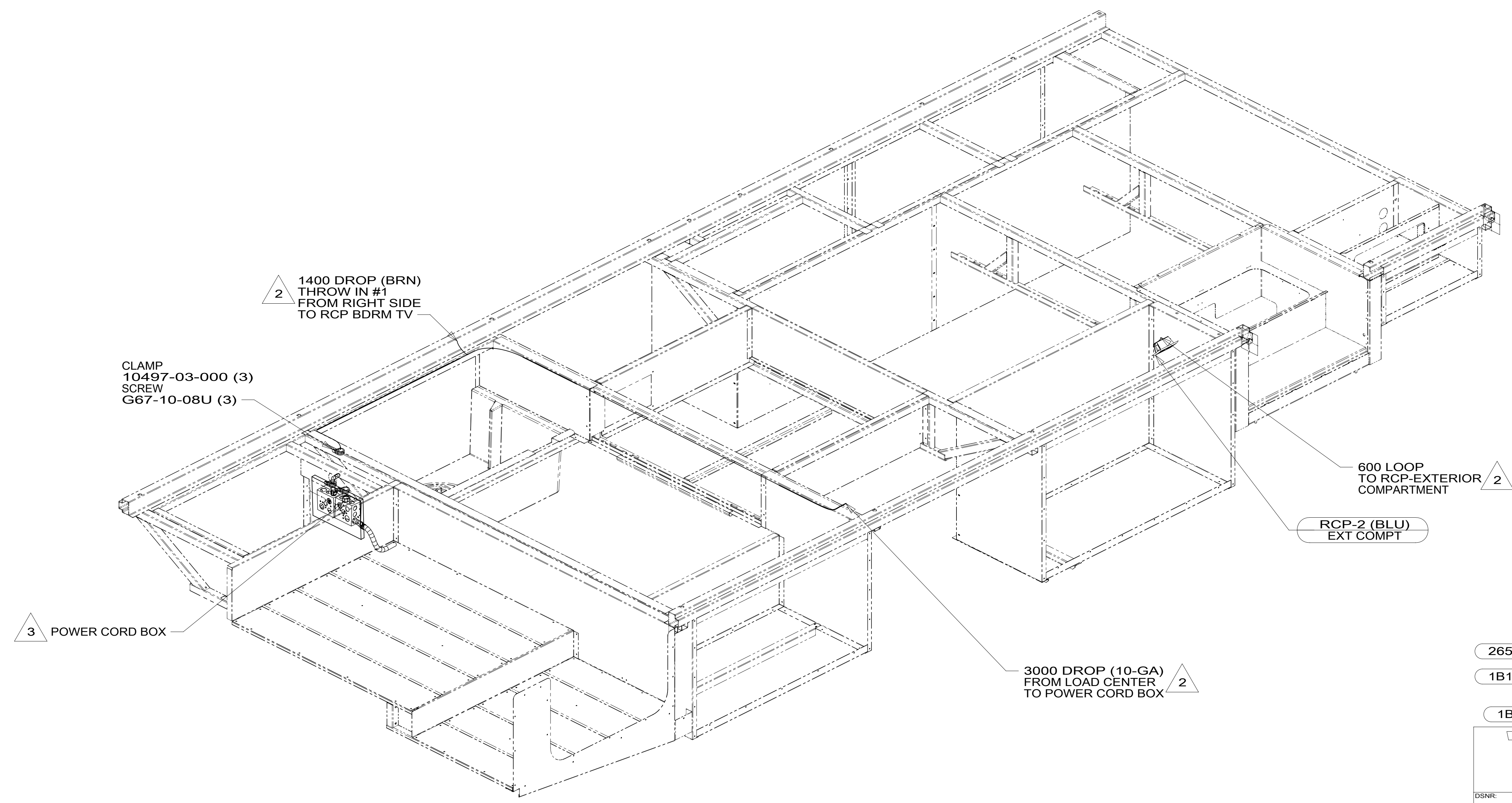


8 7 6 5 4 3 2 1

D
C
B
A



2 1400 DROP (BRN)
THROW IN #1
FROM RIGHT SIDE
TO RCP BDRM TV

CLAMP
10497-03-000 (3)
SCREW
G67-10-08U (3)

3 POWER CORD BOX

600 LOOP
TO RCP-EXTERIOR
COMPARTMENT

RCP-2 (BLU)
EXT COMPT

3000 DROP (10-GA)
FROM LOAD CENTER
TO POWER CORD BOX

- 265 CODES/STANDARDS-CSA/CMVSS
- 1B1 CODES/STANDARDS USA
- 1B1 265



DSNR:		ALL DIMENSIONS ARE IN MILLIMETERS	
DFFR:		MATERIAL:	
UNSPECIFIED TOLERANCES:			
WHOLE DIM (X)	: 3		
ONE-PLACE (X.X)	: 1.5		
TWO-PLACE (X.XX)	: 0.50		
ANGLE	: 1°		
REFER TO ES0018 FOR FASTENER TIGHTENING GUIDELINES		WEIGHT: (LBS)	FIRST USED:
			17 E26HE

FOR ELECTRICAL TORQUE SPECIFICATIONS SEE DWG NO. 128783-01-000

FOR ELECTRICAL CALLOUTS SEE DWG NO. 121339-01-000

4. AT MINIMUM ALL WIRES TO BE SUPPORTED AND SECURED PER CODE REQUIREMENTS. USE CLAMP 10495 OR 10497 OR WIRE TIE 8343 OR 108046 AND SCREW G67-XX-XXX OR G56-XX-XXX AS APPROPRIATE FOR INSTALLATION.
- 3 SEE LOAD CENTER/ATS ASM FOR ADDITIONAL INFORMATION.
- 2 WIRE ROUTES THROUGH FLOOR IN THIS AREA.
1. WIRES ROUTED UNDER FLOOR.

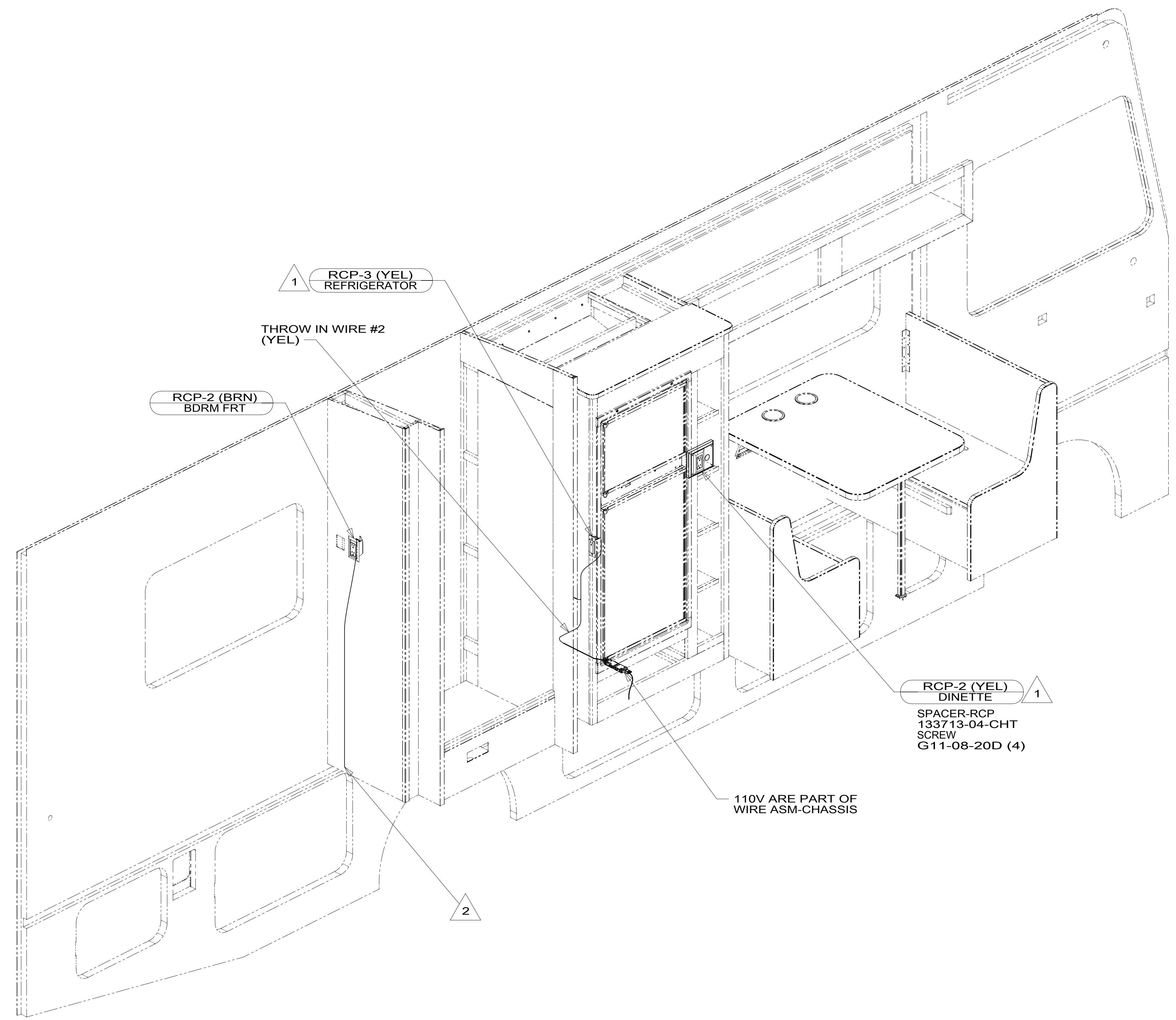
NOTES:

DESCRIPTION: WIRING INSTL-BODY, 110V		
SHEET: 1 OF 4	ITEM/PART NO.: 000013365 / 31165301000	REV:
REF:		1 02-Jun-2017

8 7 6 5 4 3 2 1

8 7 6 5 4 3 2 1

D
C
B
A



3. AT MINIMUM ALL WIRES TO BE SUPPORTED AND SECURED PER CODE REQUIREMENTS. USE CLAMP 10495 OR 10497 OR WIRE TIE 8343 OR 108046 AND SCREW G67-XX-XXX OR G56-XX-XXX AS APPROPRIATE FOR INSTALLATION.

- 2 WIRE ROUTED THRU FLOOR IN THIS AREA.
- 1 WIRE ROUTED IN SIDEWALL.

NOTES:

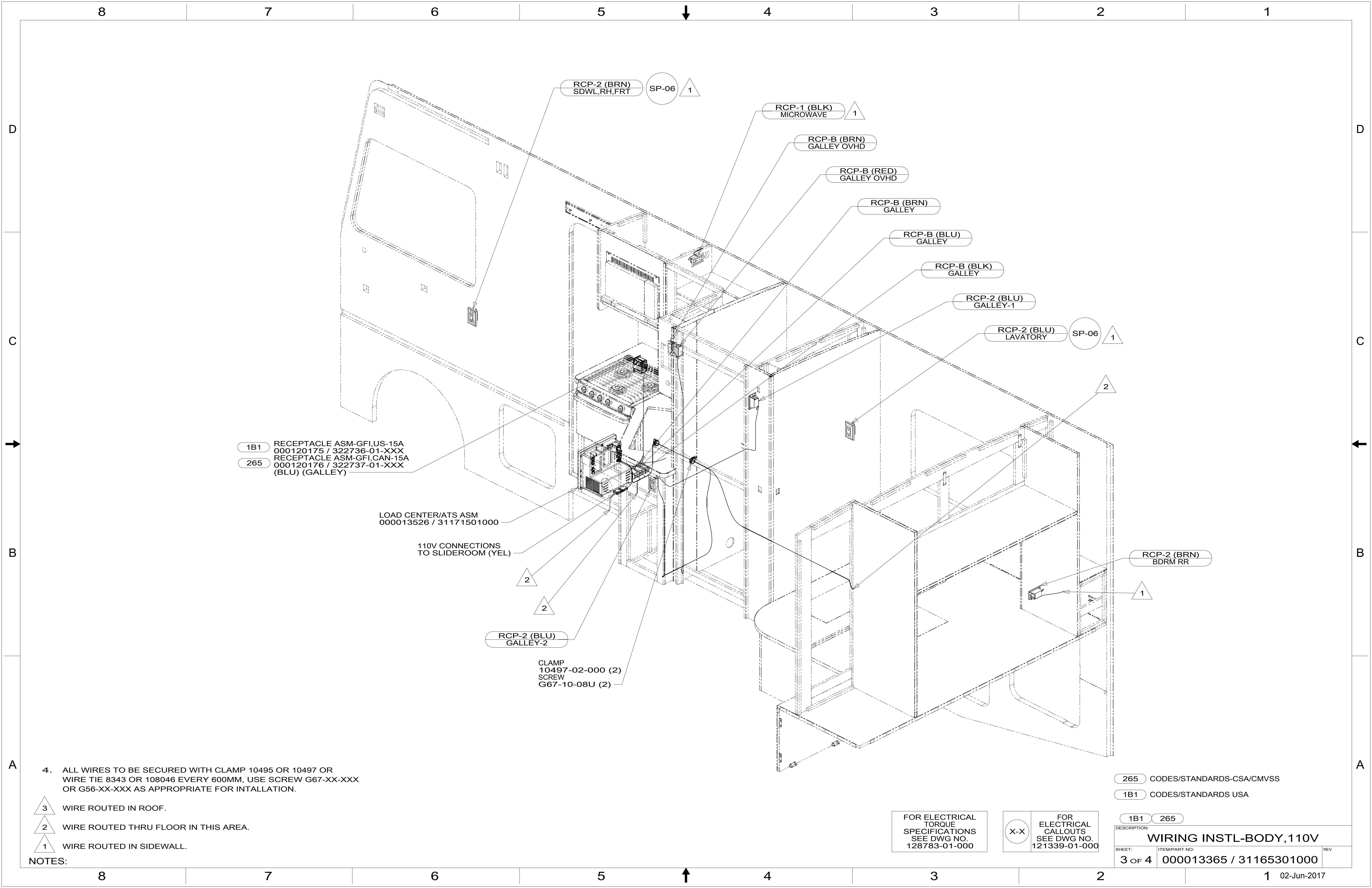
265 CODES/STANDARDS-CSA/CMVSS
 1B1 CODES/STANDARDS USA

FOR ELECTRICAL TORQUE SPECIFICATIONS SEE DWG NO. 128783-01-000

FOR ELECTRICAL CALLOUTS SEE DWG NO. 121339-01-000

DESCRIPTION:	
WIRING INSTL-BODY, 110V	
SHEET:	ITEM/PART NO. REV
2 OF 4	000013365 / 31165301000

8 7 6 5 4 3 2 1 02-Jun-2017



RCP-2 (BRN)
SDWL,RH,FRT SP-06 1

RCP-1 (BLK)
MICROWAVE 1

RCP-B (BRN)
GALLEY OVHD

RCP-B (RED)
GALLEY OVHD

RCP-B (BRN)
GALLEY

RCP-B (BLU)
GALLEY

RCP-B (BLK)
GALLEY

RCP-2 (BLU)
GALLEY-1

RCP-2 (BLU)
LAVATORY SP-06 1

1B1 RECEPTACLE ASM-GFI,US-15A
000120175 / 322736-01-XXX
265 RECEPTACLE ASM-GFI,CAN-15A
000120176 / 322737-01-XXX
(BLU) (GALLEY)

LOAD CENTER/ATS ASM
000013526 / 31171501000

110V CONNECTIONS
TO SLIDEROOM (YEL)

RCP-2 (BLU)
GALLEY-2

CLAMP
10497-02-000 (2)
SCREW
G67-10-08U (2)

RCP-2 (BRN)
BDRM RR 1

4. ALL WIRES TO BE SECURED WITH CLAMP 10495 OR 10497 OR WIRE TIE 8343 OR 108046 EVERY 600MM, USE SCREW G67-XX-XXX OR G56-XX-XXX AS APPROPRIATE FOR INTALLATION.

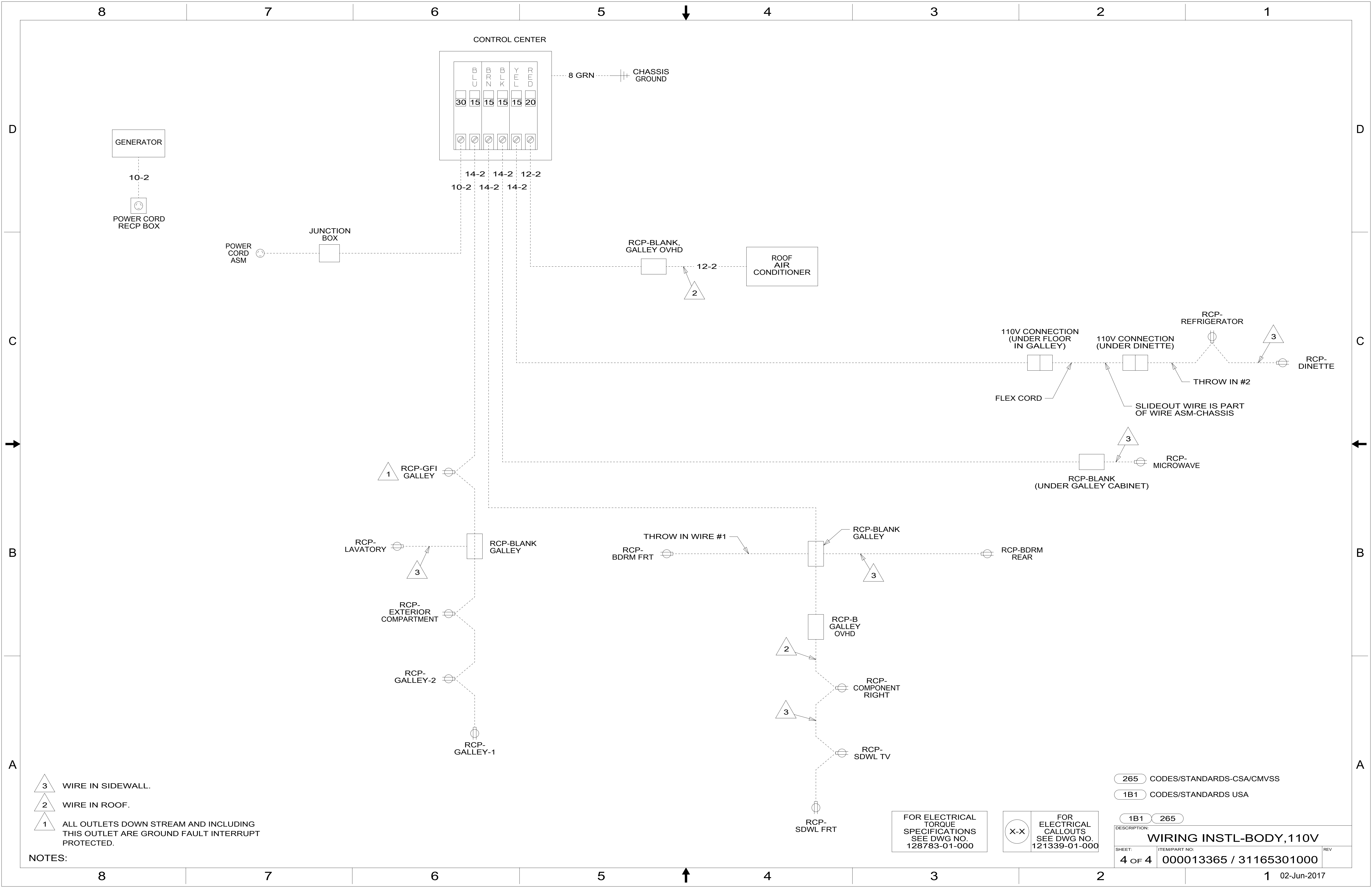
- 3 WIRE ROUTED IN ROOF.
- 2 WIRE ROUTED THRU FLOOR IN THIS AREA.
- 1 WIRE ROUTED IN SIDEWALL.

265 CODES/STANDARDS-CSA/CMVSS
1B1 CODES/STANDARDS USA

FOR ELECTRICAL
TORQUE
SPECIFICATIONS
SEE DWG NO.
128783-01-000

FOR ELECTRICAL
CALLOUTS
SEE DWG NO.
121339-01-000

DESCRIPTION: WIRING INSTL-BODY,110V	
SHEET: 3 OF 4	ITEM/PART NO: 000013365 / 31165301000
REV 1 02-Jun-2017	



3 WIRE IN SIDEWALL.
 2 WIRE IN ROOF.
 1 ALL OUTLETS DOWN STREAM AND INCLUDING THIS OUTLET ARE GROUND FAULT INTERRUPT PROTECTED.

NOTES:

FOR ELECTRICAL TORQUE SPECIFICATIONS SEE DWG NO. 128783-01-000

FOR ELECTRICAL CALLOUTS SEE DWG NO. 121339-01-000

265 CODES/STANDARDS-CSA/CMVSS
 1B1 CODES/STANDARDS USA

DESCRIPTION: WIRING INSTL-BODY, 110V		
SHEET: 4 OF 4	ITEM/PART NO: 000013365 / 31165301000	REV