

265 CODES/STANDARDS-CSA/CMVSS

1B1 CODES/STANDARDS USA

1B1 265

WINNEBAGO
COPYRIGHT 2016 WINNEBAGO INDUSTRIES, INC.

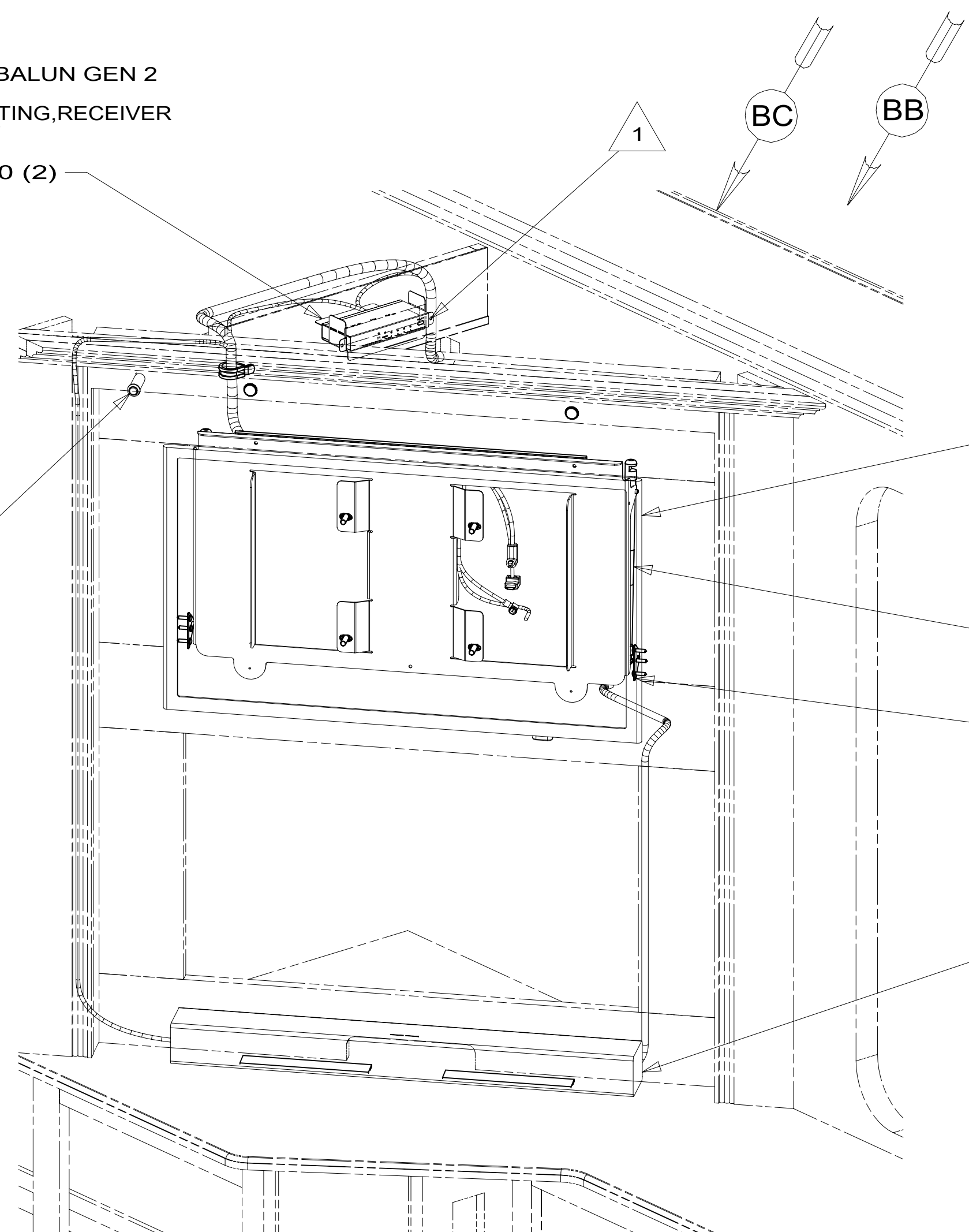
DSNR:	ALL DIMENSIONS ARE IN MILLIMETERS	
DIFFR:		
UNSPECIFIED TOLERANCES:	MATERIAL:	
WHOLE DIM (X) ± 3		
ONE-PLACE (X.X) ± 1.5		
TWO-PLACE (X.XX) ± 0.50		
ANGLE ± 1°		
REFER TO ES0018 FOR FASTENER TIGHTENING GUIDELINES	WEIGHT: (LBS)	FIRST USED:
		17 P36M
DESCRIPTION:		
WIRING INSTL-A/V, COACH		
SHEET: 1 OF 3	ITEM/PART NO: 000013090 / 31161701000	REV
REF:		1 19-Dec-2016

FOR ELECTRICAL TORQUE SPECIFICATIONS SEE DWG NO. 128783-01-000

FOR ELECTRICAL CALLOUTS SEE DWG NO. 121339-01-000

MATRIX-HDMI, BALUN GEN 2
180504-07-000
BRACKET-MOUNTING, RECEIVER
180543-01-CHT
SCREW
076790-05-000 (2)

RECEIVER-IR
180504-08-000



TV-32" FLAT
PANEL DLED, HDTV
194668-01-000
SCREW
0MG02U-06-016 (4)
SCREW
0MC31K-08-025 (4)
WASHER
156569-01-CHT (4)

SPRING-GAS
142569-31-000 (2)

BRACKET-GAS SPRING
126263-08-CHT (2)
SCREW
G67-10-12U (6)

SPEAKER-SOUNDBAR, NO SUB
000001795 / 301429-01-000
FASTENER-DUAL LOCK
085774-01-000 (200 MM)(2)
FASTENER-DUAL LOCK
085774-02-000 (200 MM)(2)

BRACKET ASM-MOUNT, TV, 32" SAMSUNG
000013565 / 311761-01-CHT
SCREW
G67-10-12U (7)

CONNECTOR-OPTICAL,
RIGHT ANG
187036-01-000

CONNECTOR-HDMI, 90
179395-02-000

CONNECTOR-F,
90 RIGHT ANGLE
176986-01-000

POWER CORD SUPPLIED
W/ SOUNDBAR
(REF)

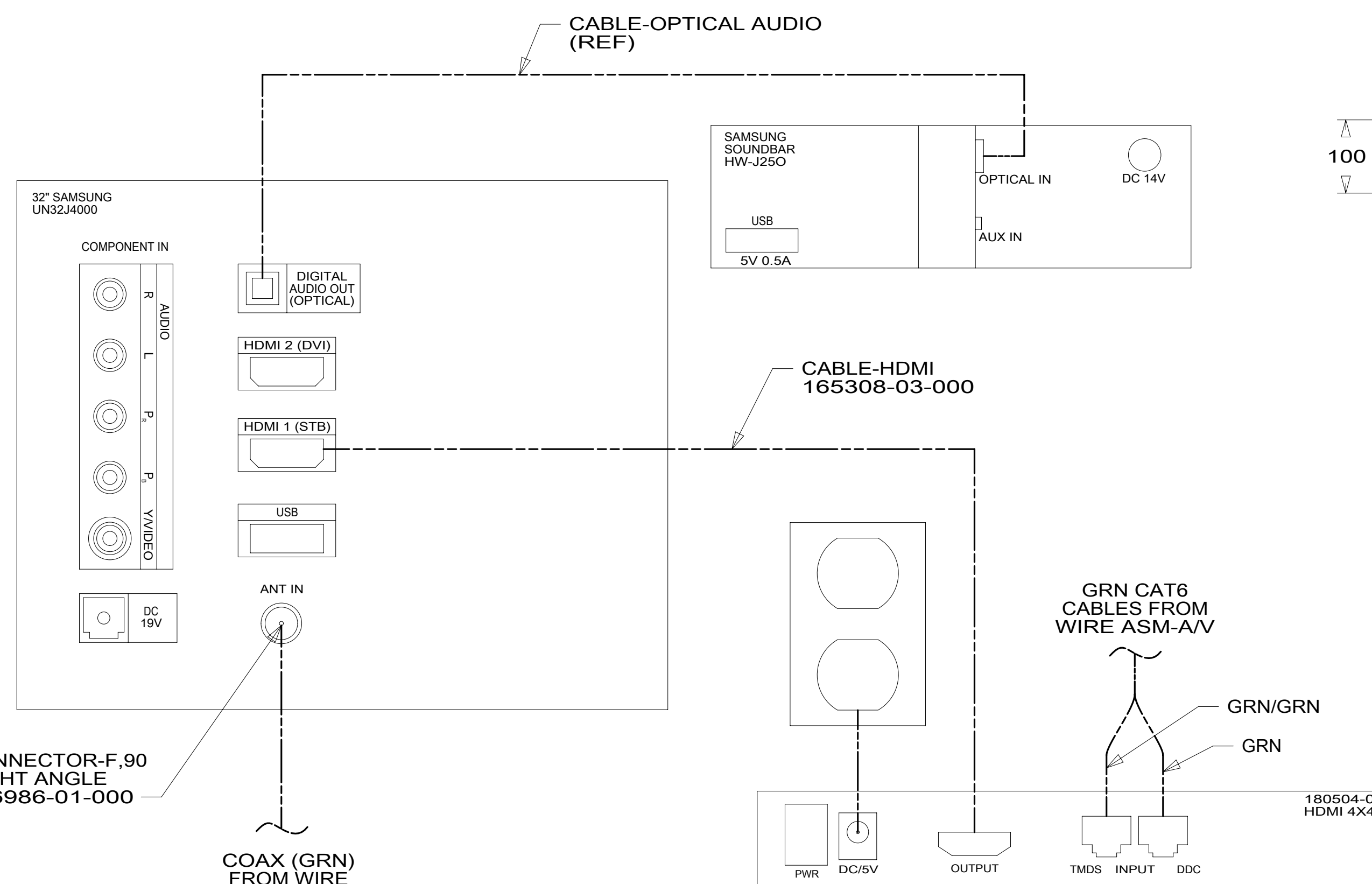
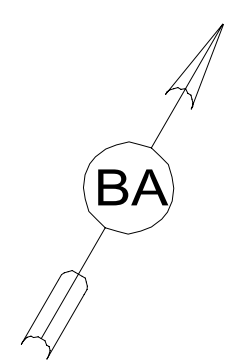
CLAMP
10497-03-000

SLEEVE-BRAIDING
139049-02-00
(900 MM)

BUMPER-RUBBER, CLEAR
120760-01-000 (2)

CABLE-OPTICAL AUDIO, 12'
187116-02-000

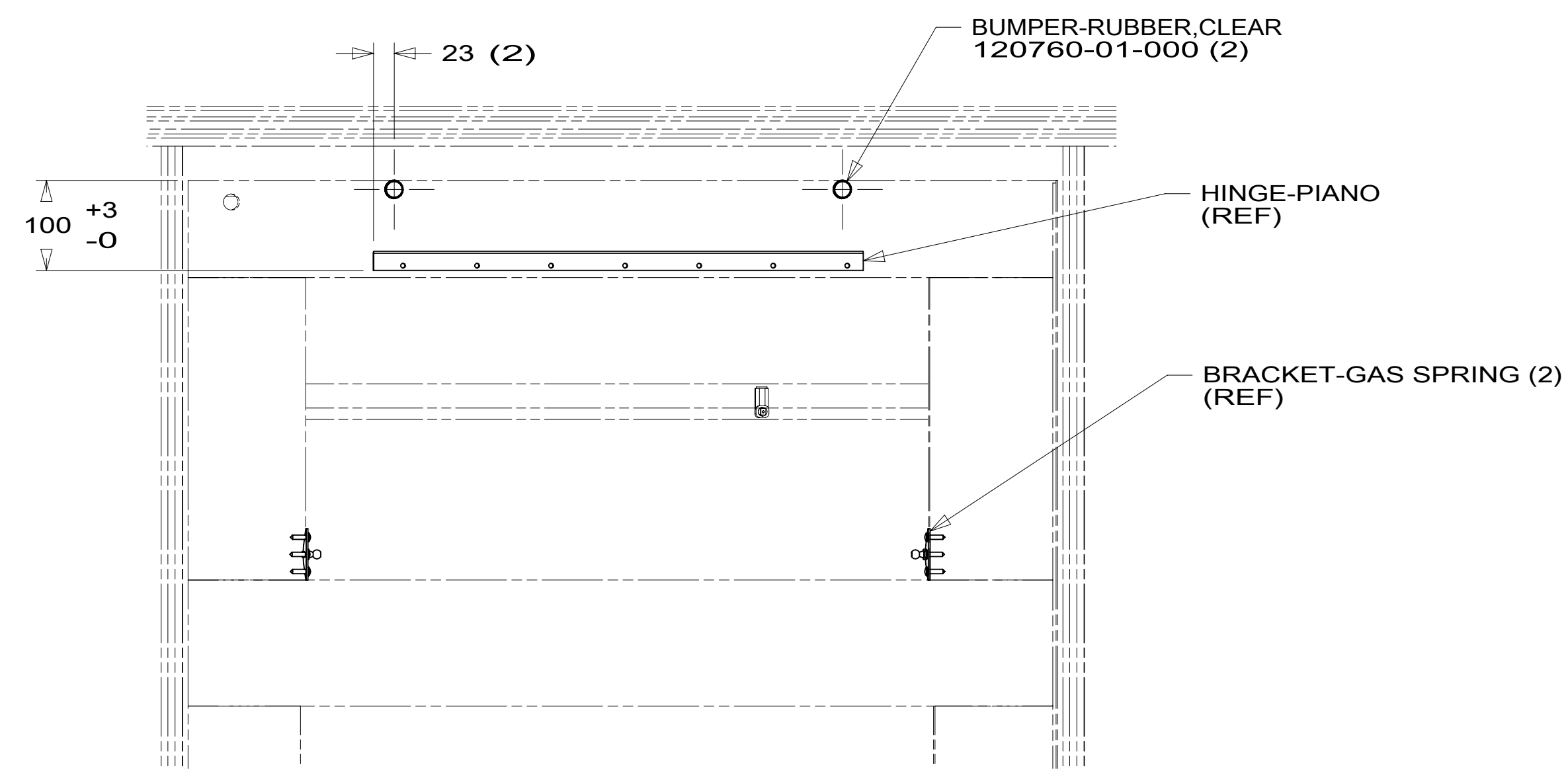
VIEW BB



CONNECTOR-F, 90
RIGHT ANGLE
176986-01-000

COAX (GRN)
FROM WIRE
ASM-A/V

DETAIL BC



VIEW BA

265 CODES/STANDARDS-CSA/CMVSS

1B1 CODES/STANDARDS USA

1B1 265

DESCRIPTION:
WIRING INSTL-A/V, COACH

SHEET: 2 OF 3 ITEM/PART NO.: 000013090 / 31161701000 REV

FOR ELECTRICAL
TORQUE
SPECIFICATIONS
SEE DWG NO.
128783-01-000

FOR ELECTRICAL
CALLOUTS
SEE DWG NO.
121339-01-000

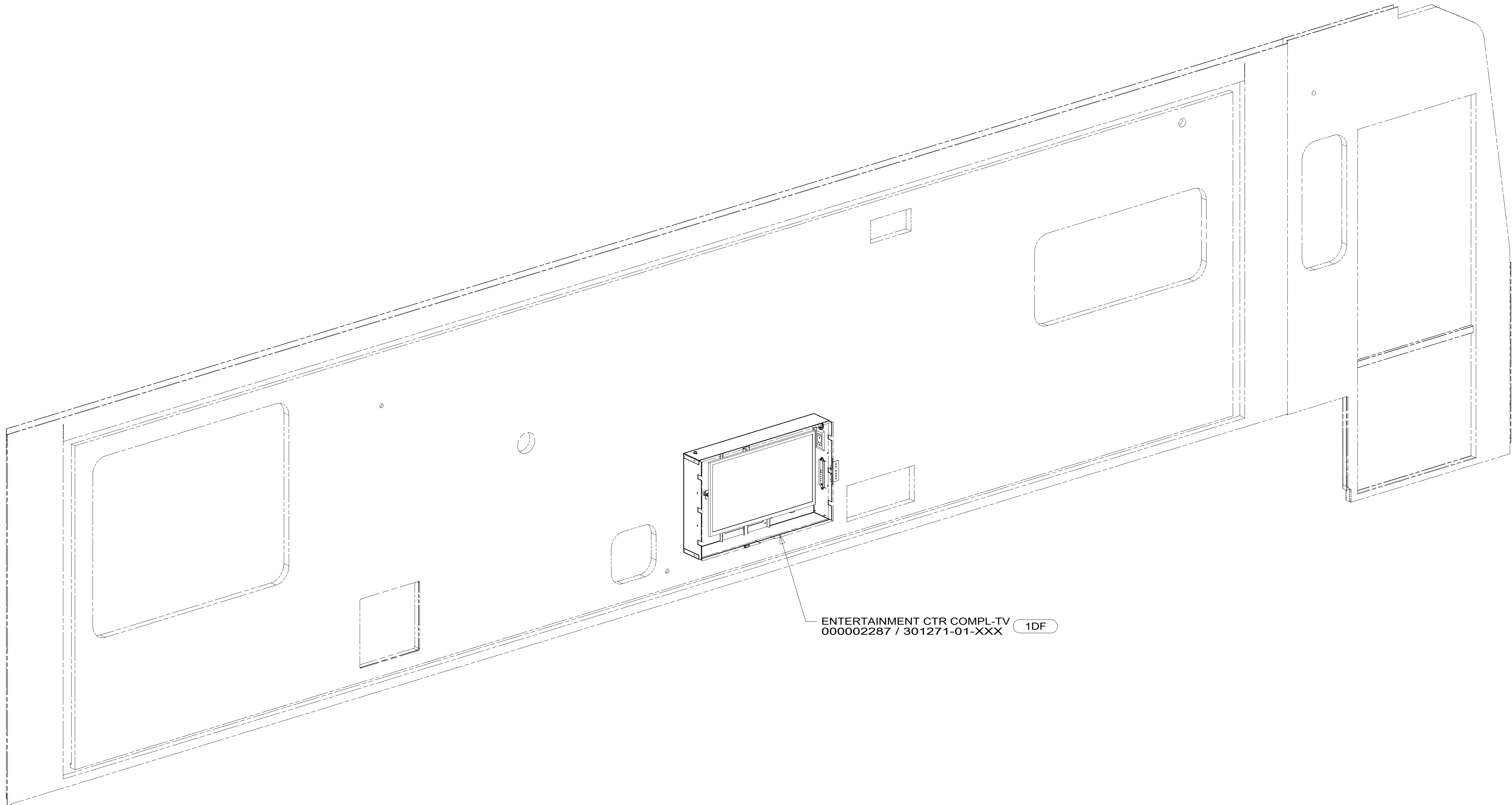
1 USE TIE-WIRE 8343-04-000 TO ATTACH WIRE ASM TO HOLES IN BRACKET OR BALUN BRACKET.

NOTES:

8 7 6 5 4 3 2 1

D
C
B
A

D
C
B
A



ENTERTAINMENT CTR COMPL-TV
000002287 / 301271-01-XXX 1DF

- 1DF EXT TV ENTERTAINMENT CENTER
- 265 CODES/STANDARDS-CSA/CMVSS
- 1B1 CODES/STANDARDS USA

FOR ELECTRICAL
TORQUE
SPECIFICATIONS
SEE DWG NO.
128783-01-000

FOR
ELECTRICAL
CALLOUTS
SEE DWG NO.
121339-01-000

DESCRIPTION:	
WIRING INSTL-A/V, COACH	
SHEET:	ITEM/PART NO:
3 OF 3	000013090 / 31161701000
REV	
1 19-Dec-2016	

8 7 6 5 4 3 2 1