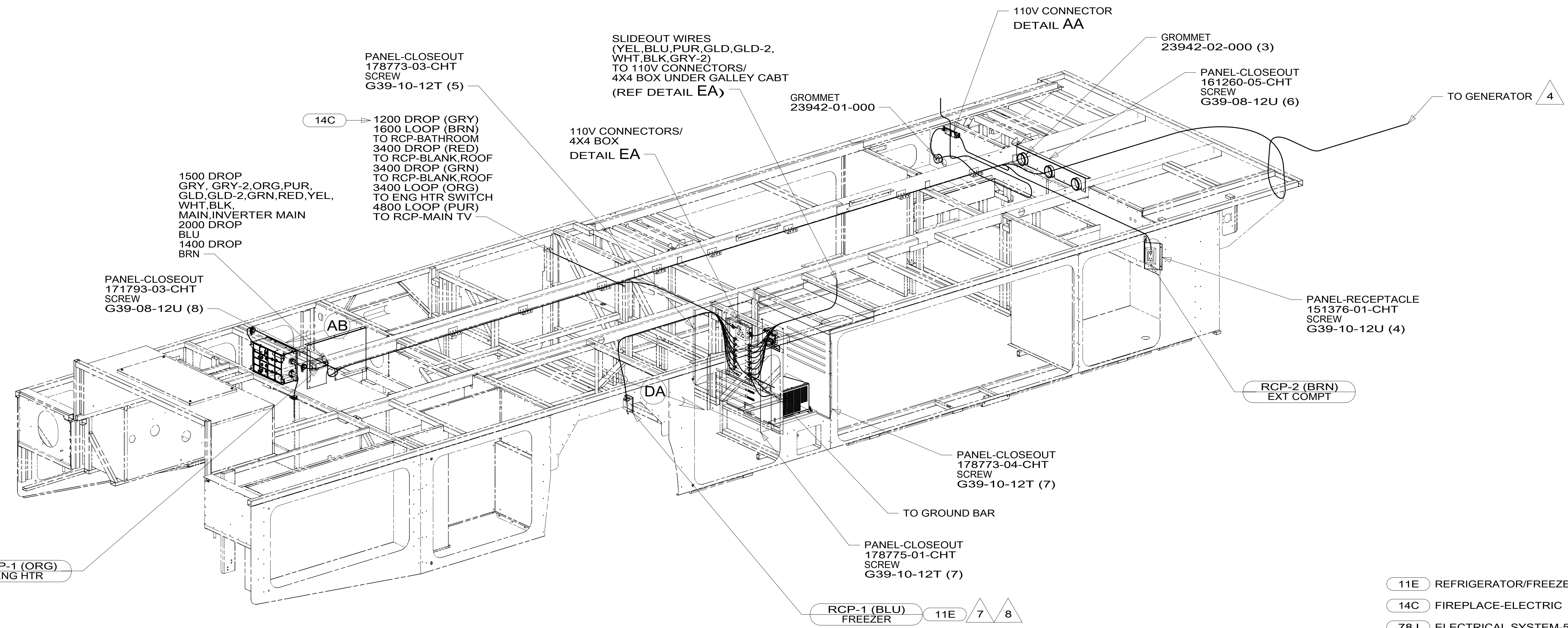
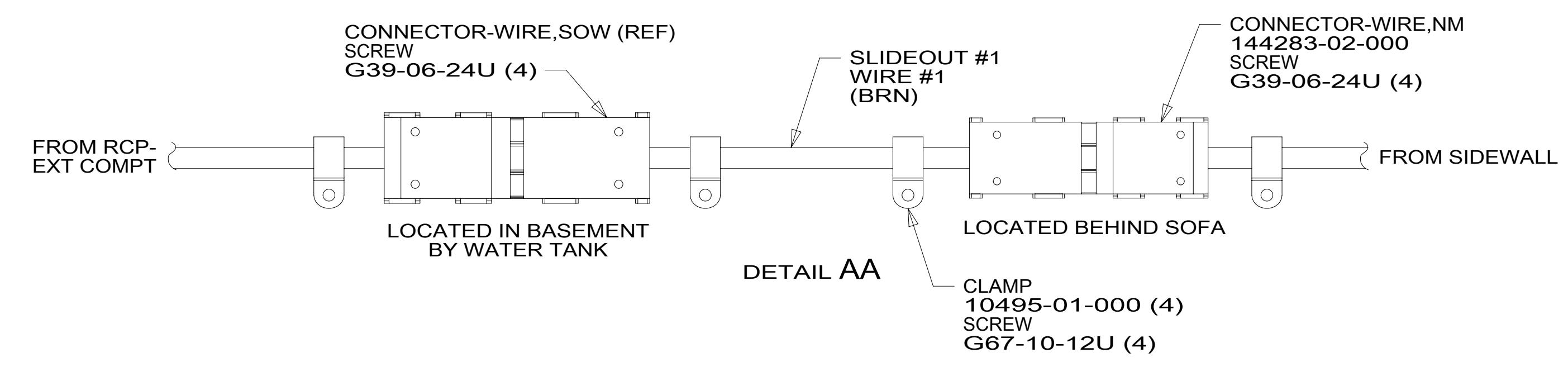
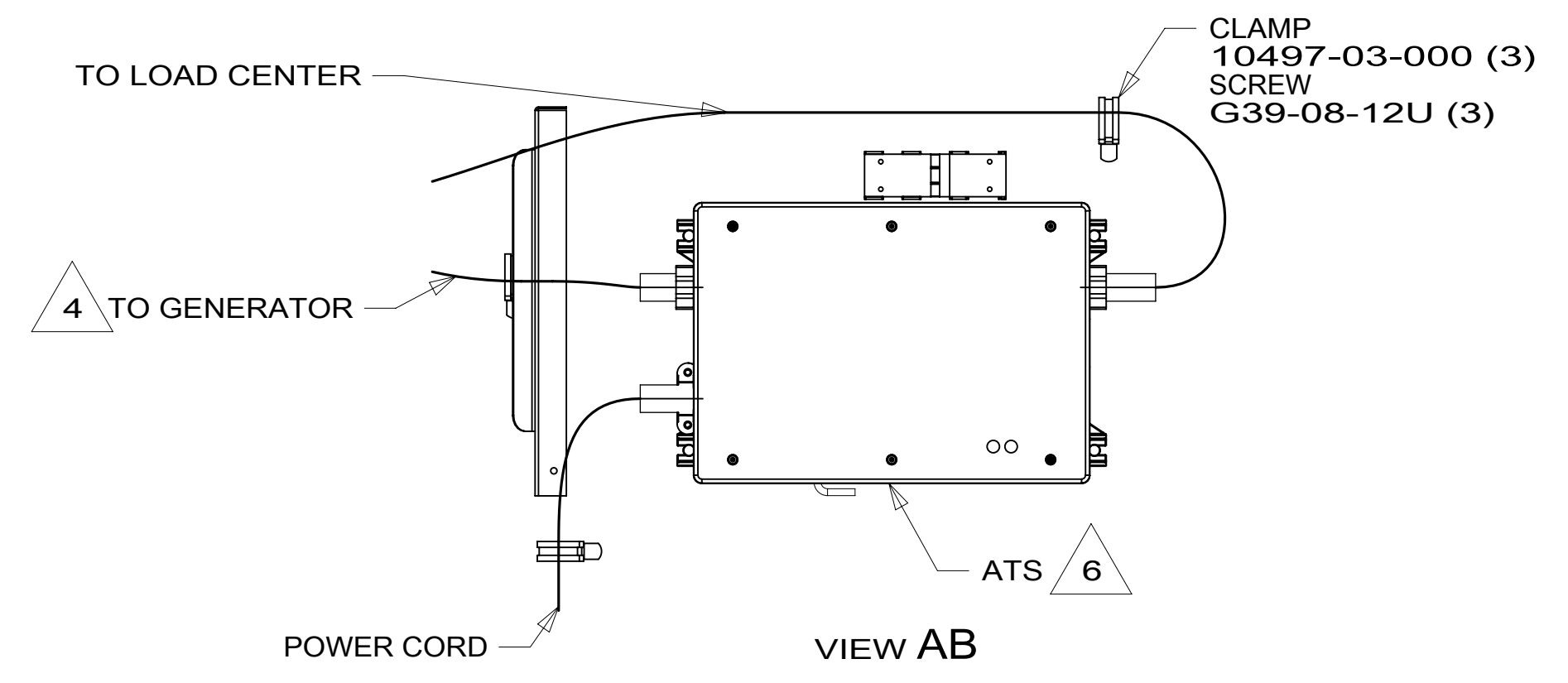


8 7 6 5 4 3 2 1



- 8 SEE WIRING INSTL-BODY, 12V FOR ADDITIONAL INFORMATION.
- 7 COIL EXCESS WIRE HERE WITHOUT 11E
- 6 SEE LOAD CENTER/ATS ASM FOR ADDITIONAL INFORMATION.
- 5 TO ABOVE FLOOR.
- 4 SEE GENERATOR INSTL FOR ADDITIONAL INFORMATION.

3. WIRES THAT REST ON WIRE TRAYS ARE TO BE TIED DOWN WITH WIRE TIE 8343-04-000.
2. CLAMP TO FLOOR SUPPORT TUBES AS NECESSARY WITH CLAMP 10497-01-000.
1. AT MINIMUM ALL WIRES TO BE SUPPORTED AND SECURED PER CODE REQUIREMENTS. USE CLAMP 10495 OR 10497 OR WIRE TIE 8343 OR 108046 AND SCREW G67-XX-XXX OR G56-XX-XXX AS APPROPRIATE FOR INSTALLATION.



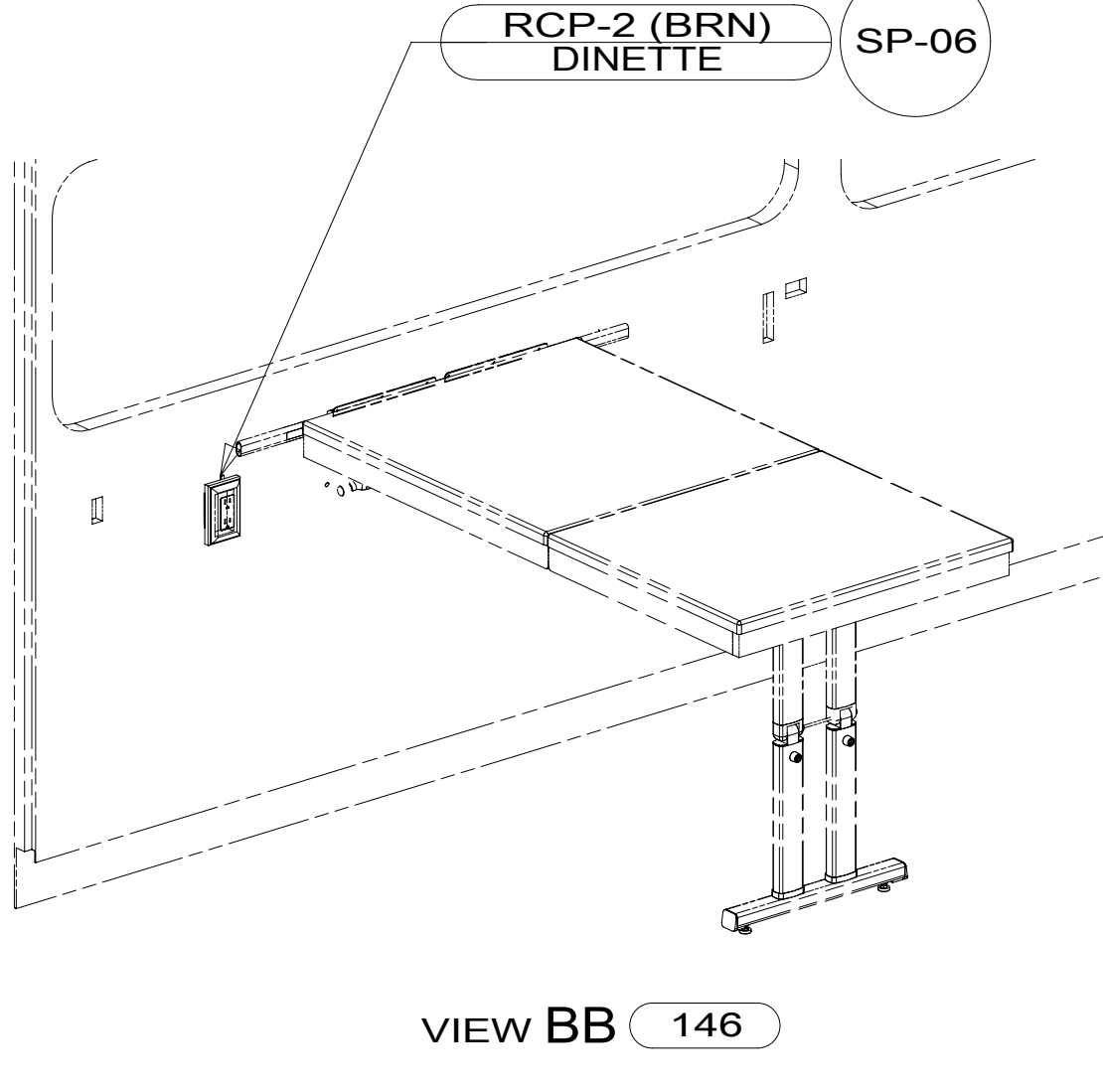
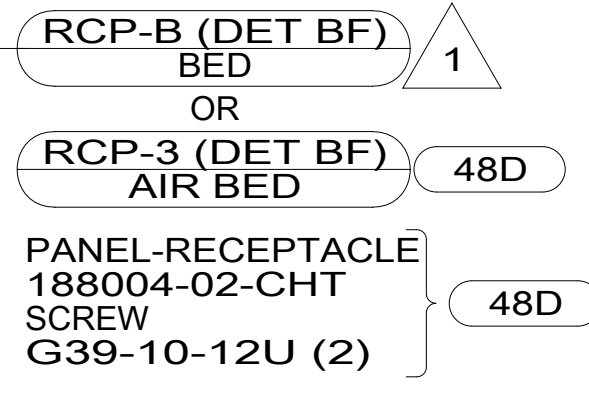
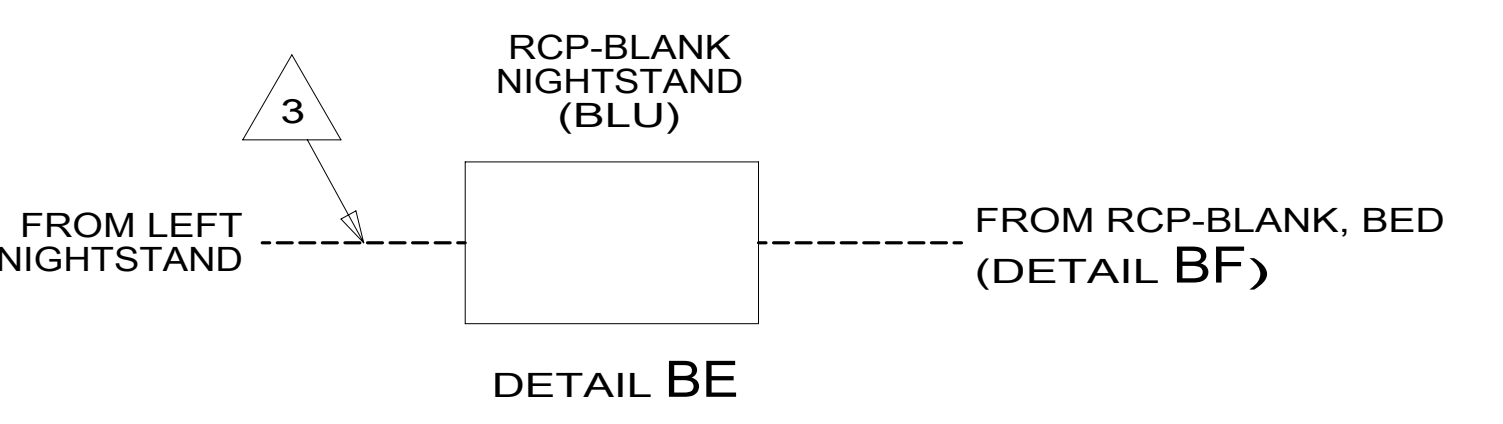
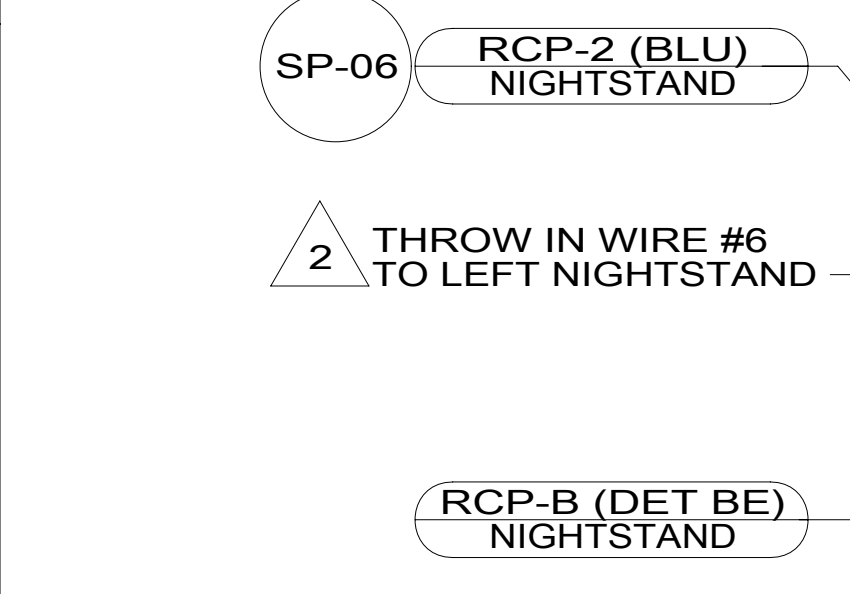
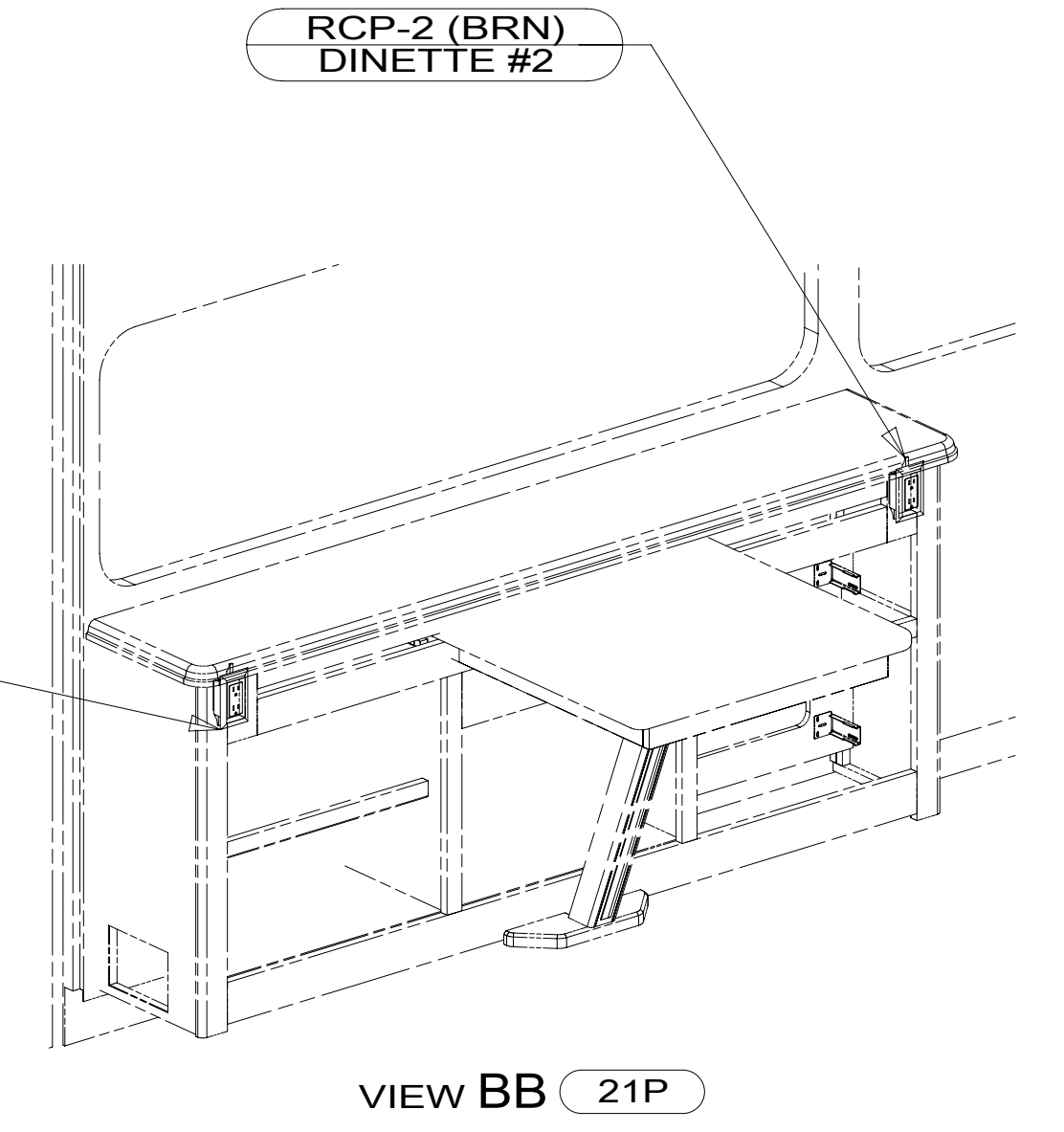
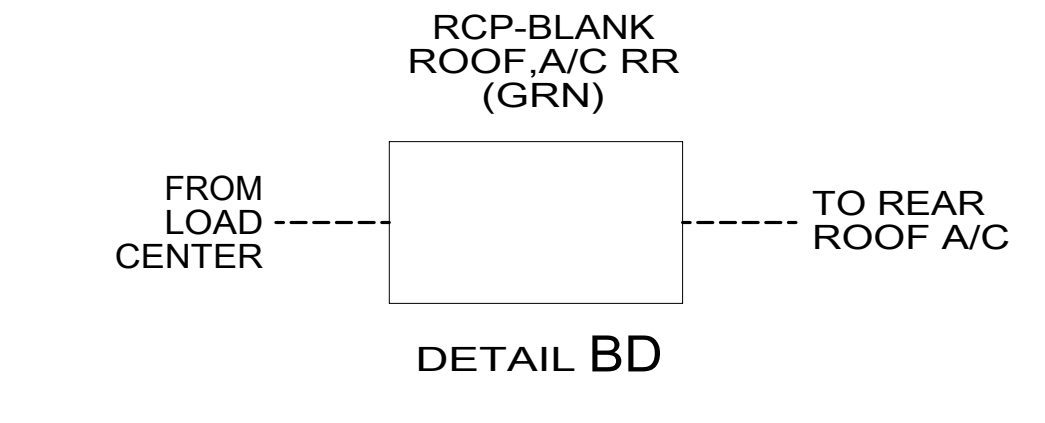
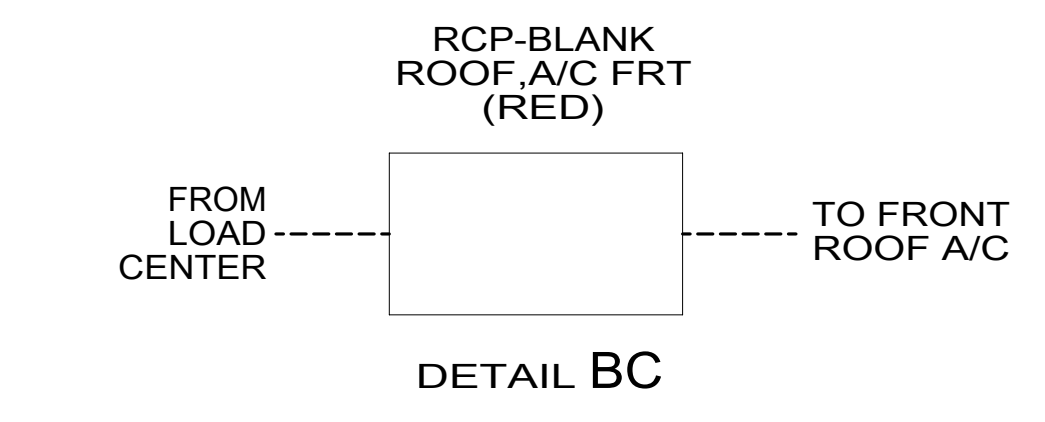
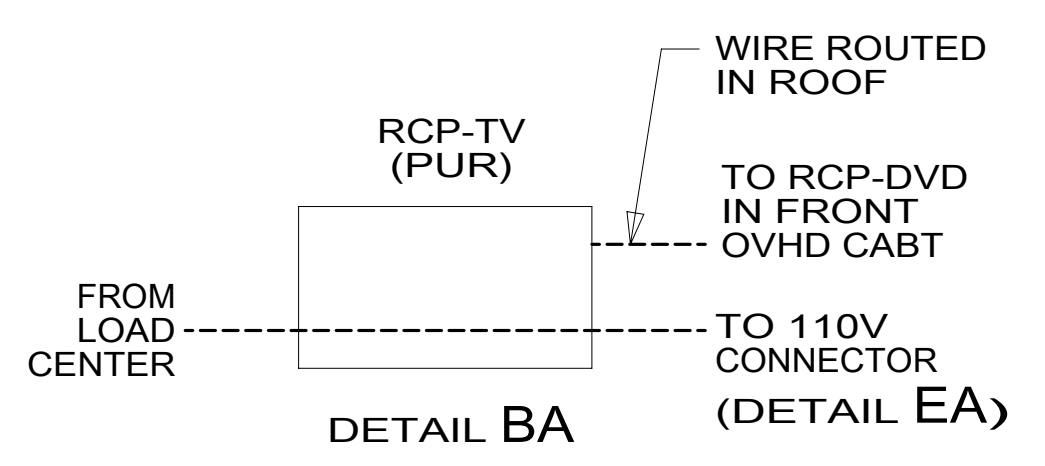
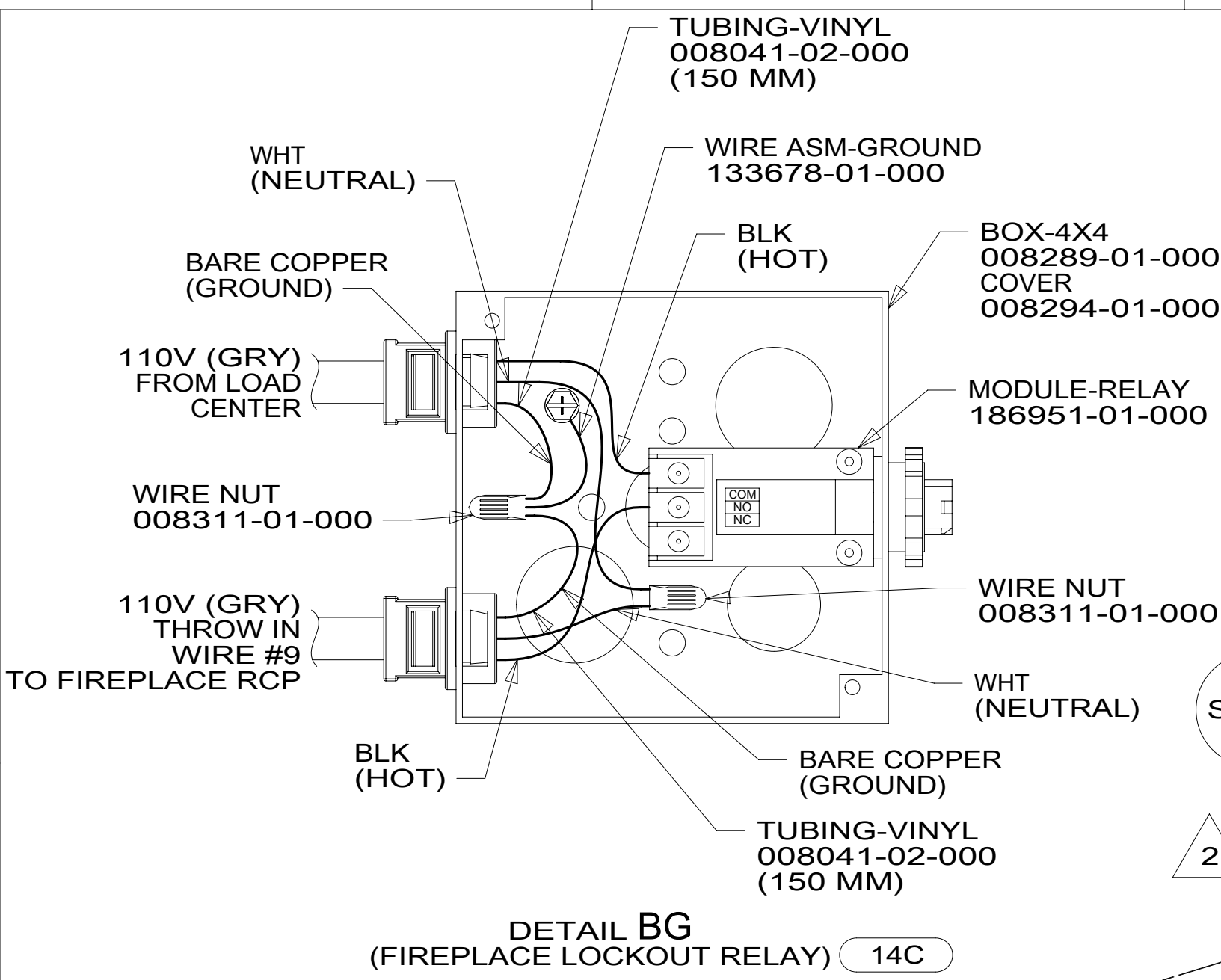
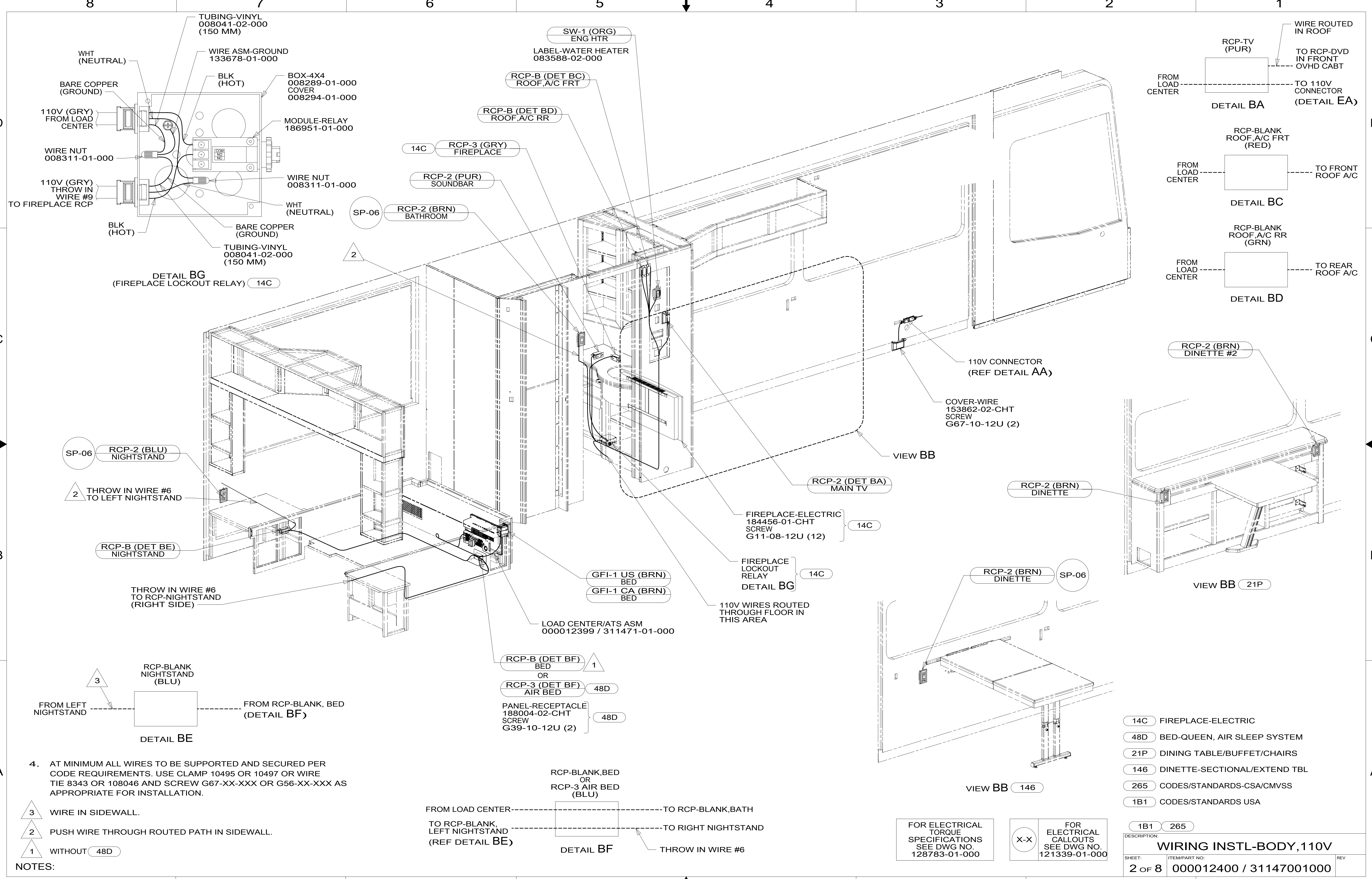
- 11E REFRIGERATOR/FREEZER PORTABL
- 14C FIREPLACE-ELECTRIC
- 78J ELECTRICAL SYSTEM-50 AMP
- 265 CODES/STANDARDS-CSA/CMVSS
- 1B1 CODES/STANDARDS USA

**WINNEBAGO**  
COPYRIGHT 2016 WINNEBAGO INDUSTRIES, INC.

|                                                    |                                       |
|----------------------------------------------------|---------------------------------------|
| DSNR:                                              | ALL DIMENSIONS ARE IN MILLIMETERS     |
| DIFTR:                                             | MATERIAL:                             |
| UNSPECIFIED TOLERANCES:                            | WEIGHT: (LBS)                         |
| WHOLE DIM (X) : 3                                  | FIRST USED: 17 P36M                   |
| ONE-PLACE (X.X) : 1.5                              |                                       |
| TWO-PLACE (X.XX) : 0.50                            |                                       |
| ANGLE : 1°                                         |                                       |
| REFER TO ES0018 FOR FASTENER TIGHTENING GUIDELINES |                                       |
| <b>DESCRIPTION:</b>                                |                                       |
| <b>WIRING INSTL-BODY, 110V</b>                     |                                       |
| SHEET: 1 OF 8                                      | ITEM/PART NO: 000012400 / 31147001000 |
| REF:                                               | 19-Dec-2016                           |

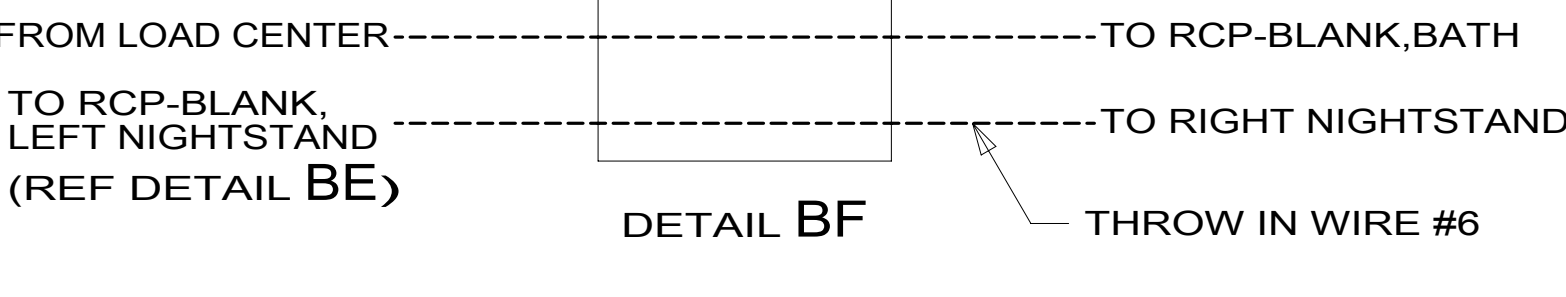
FOR ELECTRICAL TORQUE SPECIFICATIONS SEE DWG NO. 128783-01-000

FOR ELECTRICAL CALLOUTS SEE DWG NO. 121339-01-000



4. AT MINIMUM ALL WIRES TO BE SUPPORTED AND SECURED PER CODE REQUIREMENTS. USE CLAMP 10495 OR 10497 OR WIRE TIE 8343 OR 108046 AND SCREW G67-XX-XXX OR G56-XX-XXX AS APPROPRIATE FOR INSTALLATION.

- 3 WIRE IN SIDEWALL.
- 2 PUSH WIRE THROUGH ROUTED PATH IN SIDEWALL.
- 1 WITHOUT 48D

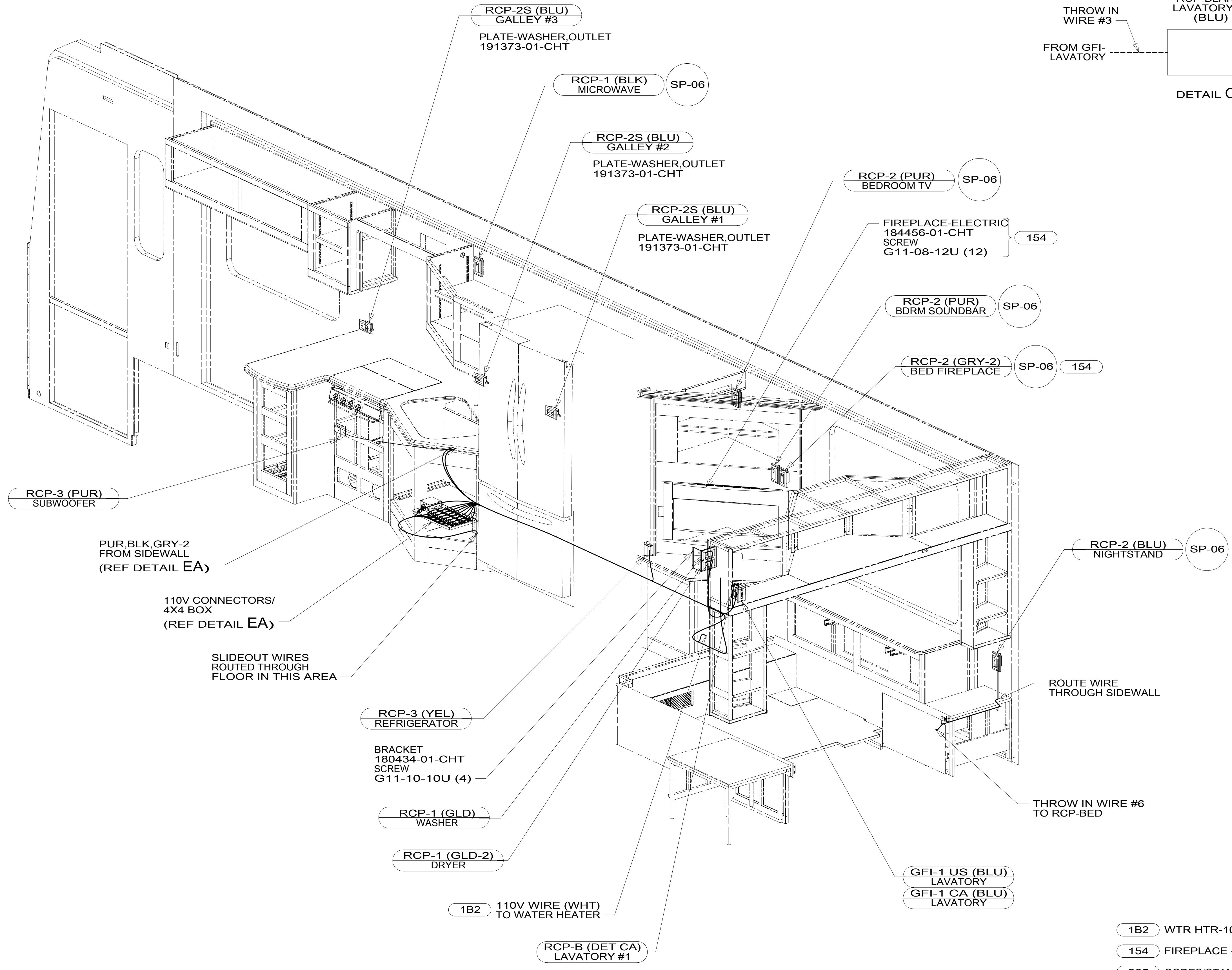
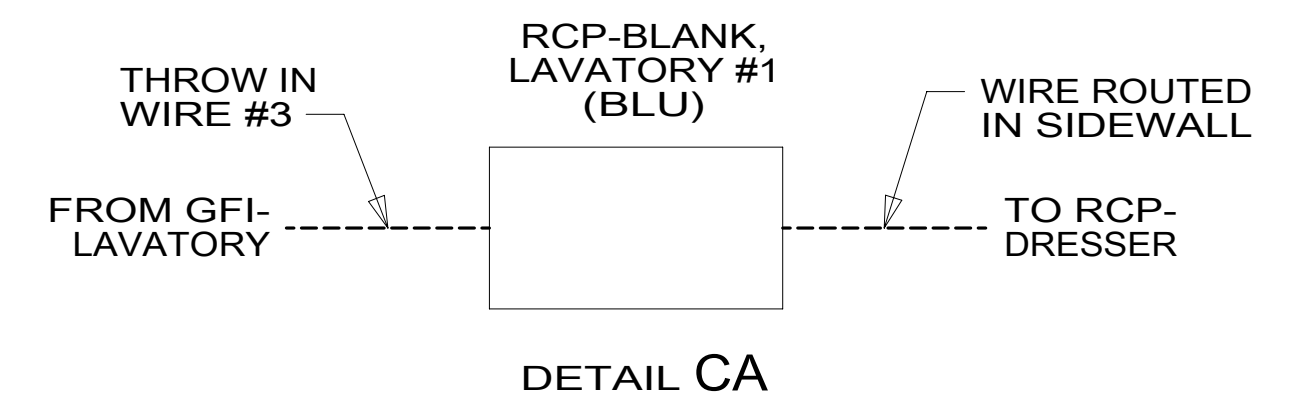
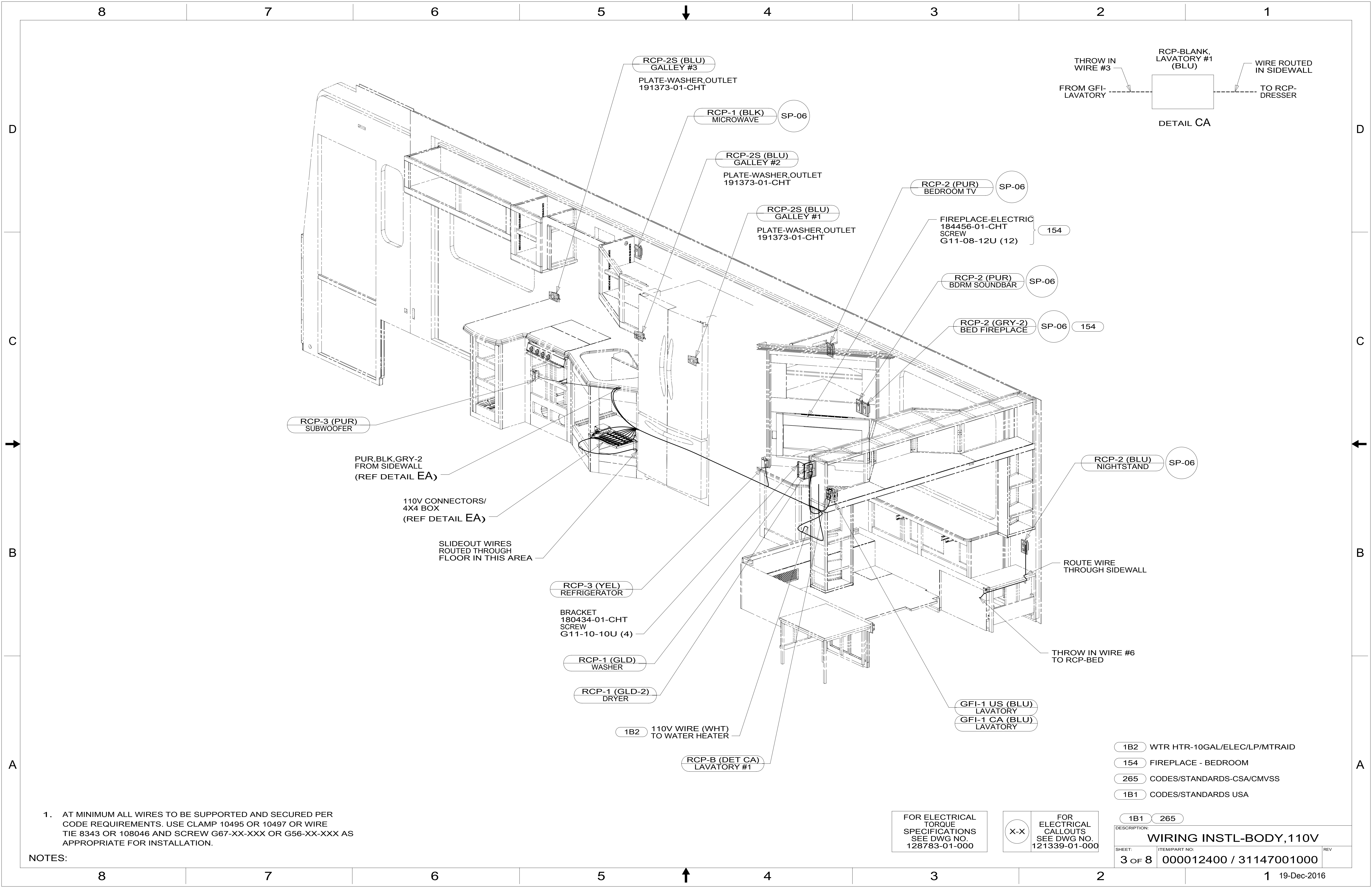


FOR ELECTRICAL TORQUE SPECIFICATIONS SEE DWG NO. 128783-01-000

FOR ELECTRICAL CALLOUTS SEE DWG NO. 121339-01-000

- 14C FIREPLACE-ELECTRIC
- 48D BED-QUEEN, AIR SLEEP SYSTEM
- 21P DINING TABLE/BUFFET/CHAIRS
- 146 DINETTE-SECTIONAL/EXTEND TBL
- 265 CODES/STANDARDS-CSA/CMVSS
- 1B1 CODES/STANDARDS USA

|                                             |                                              |     |
|---------------------------------------------|----------------------------------------------|-----|
| DESCRIPTION: <b>WIRING INSTL-BODY, 110V</b> |                                              |     |
| SHEET: <b>2 OF 8</b>                        | ITEM/PART NO: <b>000012400 / 31147001000</b> | REV |
| 19-Dec-2016                                 |                                              |     |



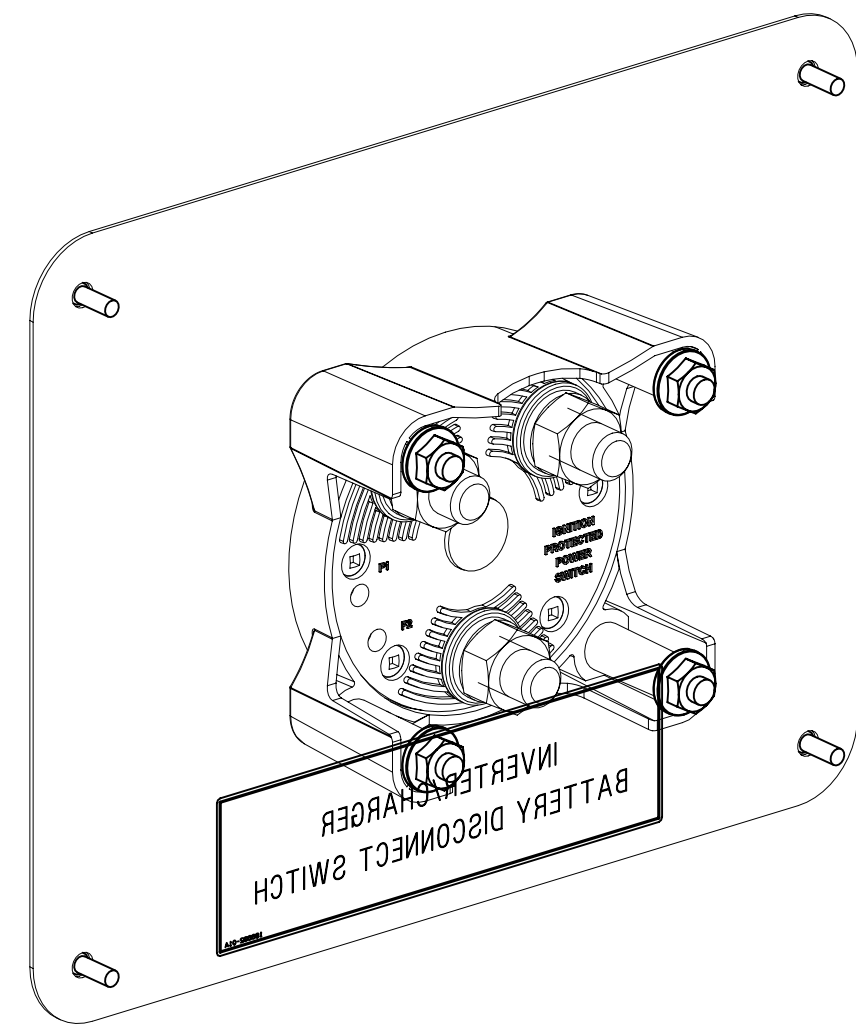
- 1B2 WTR HTR-10GAL/ELEC/LP/MTRAIID
- 154 FIREPLACE - BEDROOM
- 265 CODES/STANDARDS-CSA/CMVSS
- 1B1 CODES/STANDARDS USA

NOTES:  
1. AT MINIMUM ALL WIRES TO BE SUPPORTED AND SECURED PER CODE REQUIREMENTS. USE CLAMP 10495 OR 10497 OR WIRE TIE 8343 OR 108046 AND SCREW G67-XX-XXX OR G56-XX-XXX AS APPROPRIATE FOR INSTALLATION.

FOR ELECTRICAL TORQUE SPECIFICATIONS SEE DWG NO. 128783-01-000

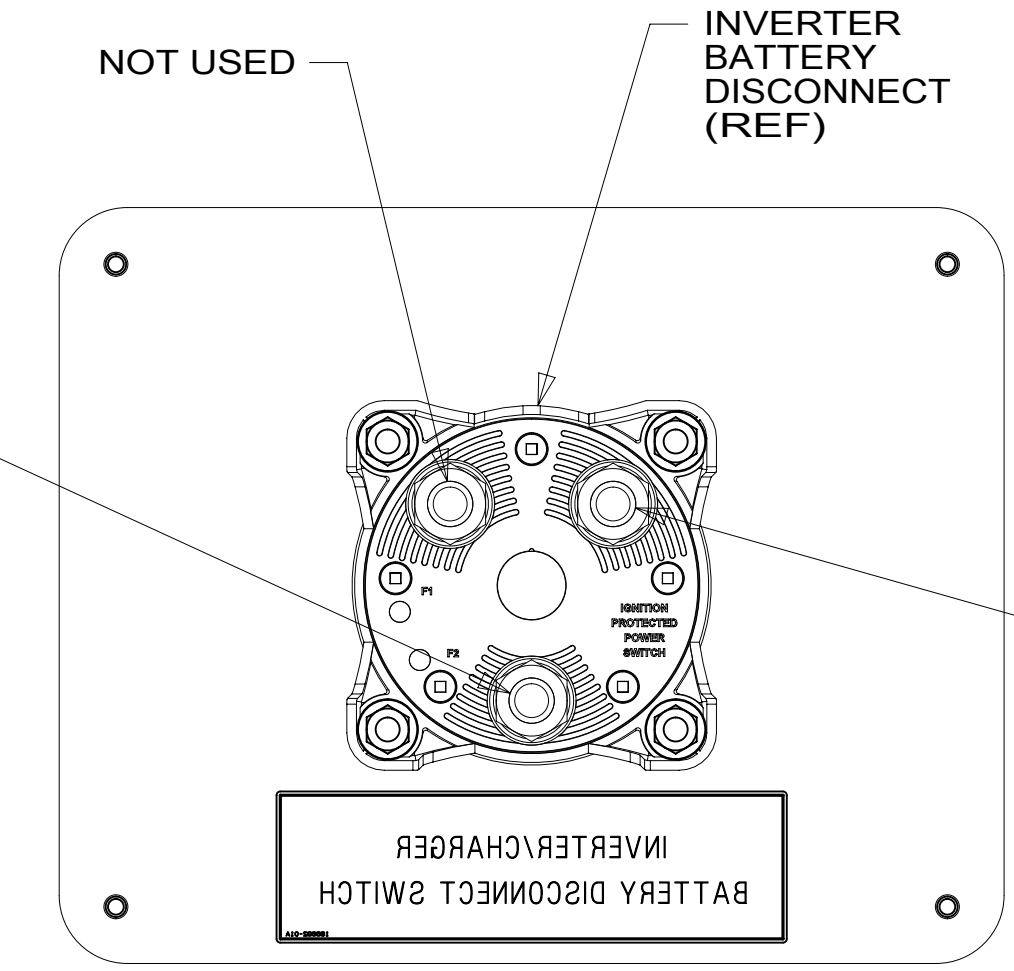
FOR ELECTRICAL CALLOUTS SEE DWG NO. 121339-01-000

|                                                |                                                  |
|------------------------------------------------|--------------------------------------------------|
| DESCRIPTION:<br><b>WIRING INSTL-BODY, 110V</b> |                                                  |
| SHEET:<br><b>3 OF 8</b>                        | ITEM/PART NO.:<br><b>000012400 / 31147001000</b> |
| REV                                            |                                                  |



SWITCH-BATT  
DISC 600 AMP  
186905-01-000  
BOLT  
G16-04-32U (4)  
NUT  
D39-04-00U (4)  
PANEL-CLOSEOUT  
161730-07-CHT  
SCREW  
G39-08-08U (4)  
LABEL  
186692-01-CHT  
DETAIL DC

INVERTER  
175386-01-000  
NUT  
D39-06-00B (4)



INPUT  
CABLE ASM-ORG  
FROM INVERTER FUSE

OUTPUT  
CABLE ASM-ORG  
FROM INVERTER  
POSITIVE POST

DETAIL DC

3 4  
POSITIVE BATTERY  
CABLE CONNECTION  
(FROM DISCONNECT  
SWITCH)

REMOTE DISPLAY  
PANEL & AC TEMP  
SENSOR CONNECTION

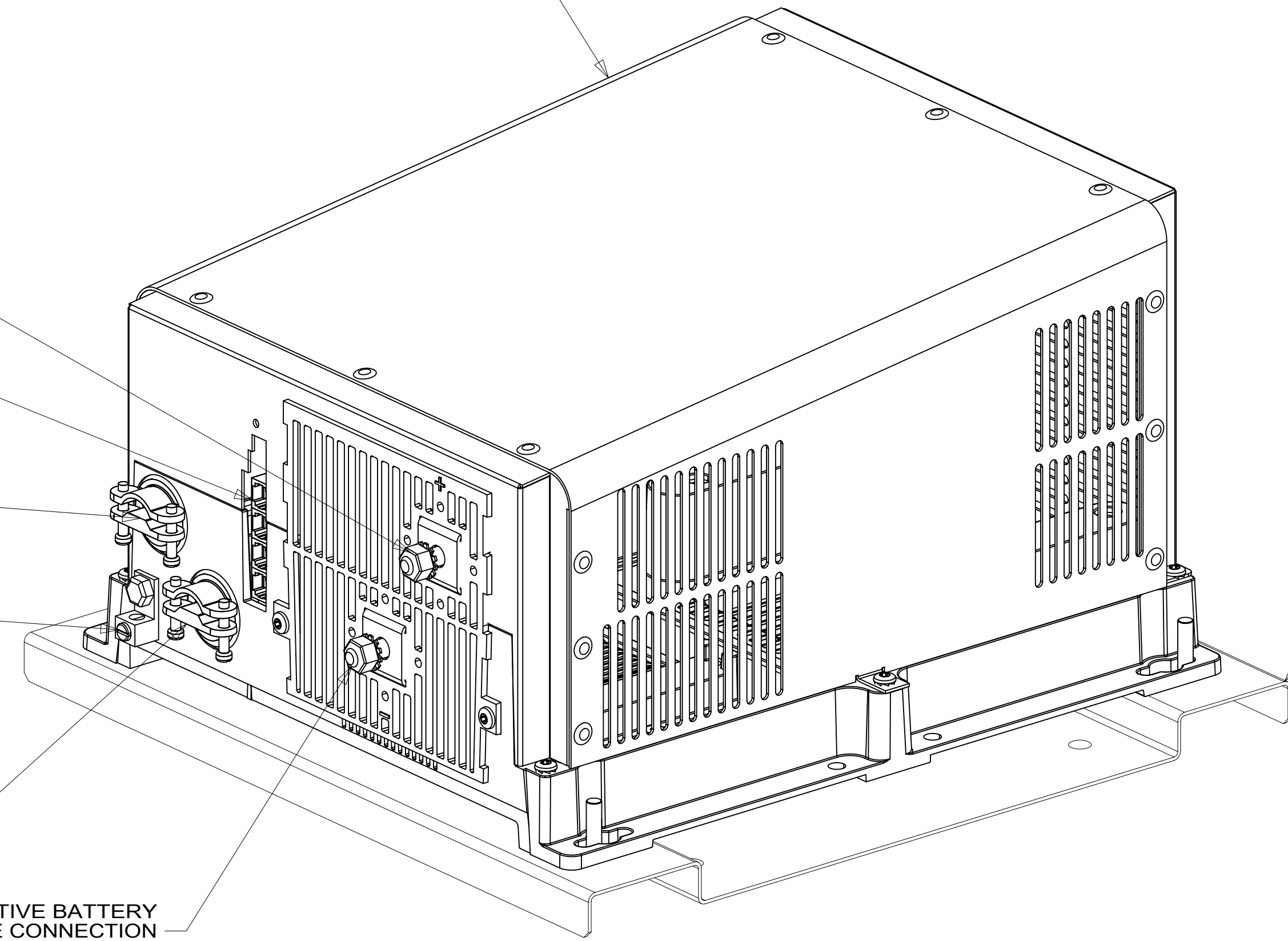
1  
AC OUTPUT  
10 GA WIRE  
FROM INVERTER  
BREAKER PANEL  
DETAIL DB

1  
WIRE ASM-GROUND

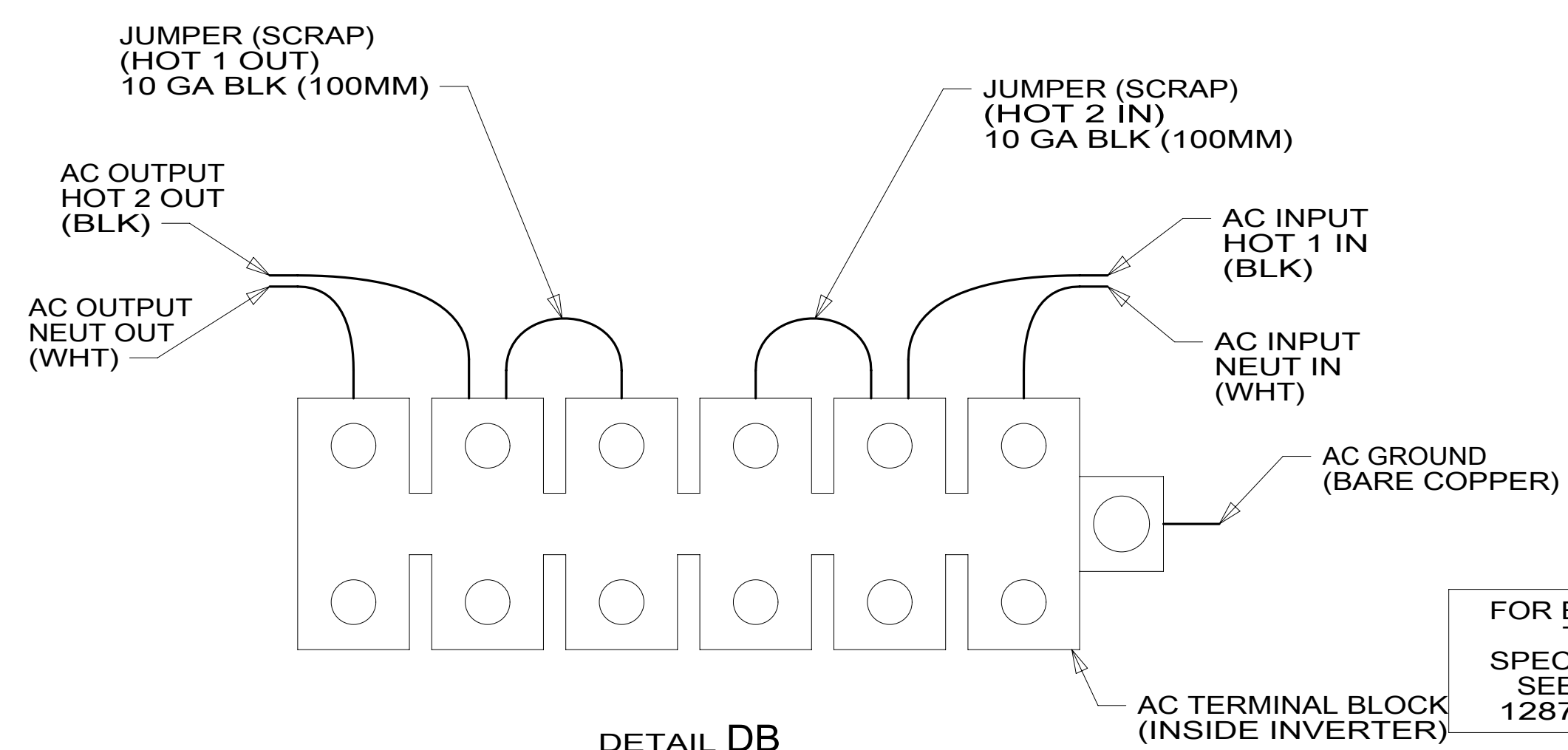
1  
AC INPUT  
10 GA WIRE  
FROM MAIN  
BREAKER PANEL  
DETAIL DB

3 4  
NEGATIVE BATTERY  
CABLE CONNECTION

BRACKET  
176315-08-CHT  
RIVET  
113133-01-CHT (4)



VIEW DA



DETAIL DB

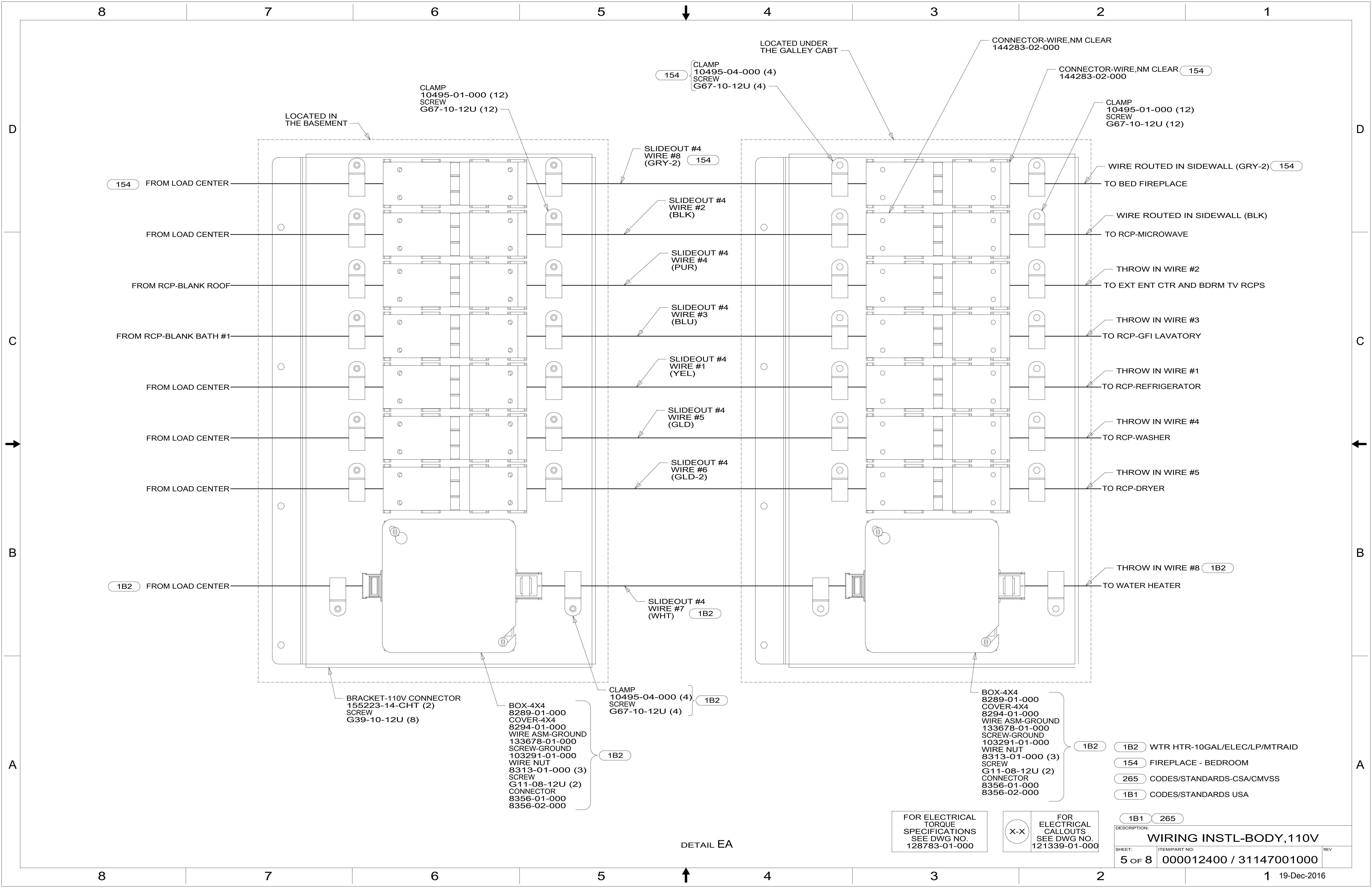
- NOTES:
- 4 DO NOT USE POWER/AIR TOOL TO INSTALL NUT. TORQUE TO 10-12 FT LBS.
  - 3 SEE WIRING INSTL-CHASSIS FOR ADDITIONAL INFORMATION.
  - 2 BRACKET IS LOCATED BY HOLES ON PANEL.
  - 1 SEE LOAD CENTER/ATS ASM FOR ADDITIONAL INFORMATION.

265 CODES/STANDARDS-CSA/CMVSS  
1B1 CODES/STANDARDS USA

FOR ELECTRICAL  
TORQUE  
SPECIFICATIONS  
SEE DWG NO.  
128783-01-000

X-X  
FOR ELECTRICAL  
CALLOUTS  
SEE DWG NO.  
121339-01-000

|                                |                         |
|--------------------------------|-------------------------|
| DESCRIPTION:                   |                         |
| <b>WIRING INSTL-BODY, 110V</b> |                         |
| SHEET:                         | ITEM/PART NO. REV       |
| 4 OF 8                         | 000012400 / 31147001000 |



154

FROM LOAD CENTER

FROM LOAD CENTER

FROM RCP-BLANK ROOF

FROM RCP-BLANK BATH #1

FROM LOAD CENTER

FROM LOAD CENTER

FROM LOAD CENTER

1B2

FROM LOAD CENTER

LOCATED IN THE BASEMENT

CLAMP  
10495-01-000 (12)  
SCREW  
G67-10-12U (12)

154 CLAMP  
10495-04-000 (4)  
SCREW  
G67-10-12U (4)

LOCATED UNDER THE GALLEY CABT

CONNECTOR-WIRE,NM CLEAR  
144283-02-000

CONNECTOR-WIRE,NM CLEAR  
144283-02-000 154

CLAMP  
10495-01-000 (12)  
SCREW  
G67-10-12U (12)

SLIDEOUT #4  
WIRE #8  
(GRY-2) 154

SLIDEOUT #4  
WIRE #2  
(BLK)

SLIDEOUT #4  
WIRE #4  
(PUR)

SLIDEOUT #4  
WIRE #3  
(BLU)

SLIDEOUT #4  
WIRE #1  
(YEL)

SLIDEOUT #4  
WIRE #5  
(GLD)

SLIDEOUT #4  
WIRE #6  
(GLD-2)

SLIDEOUT #4  
WIRE #7  
(WHT) 1B2

WIRE ROUTED IN SIDEWALL (GRY-2) 154

WIRE ROUTED IN SIDEWALL (BLK)

THROW IN WIRE #2

THROW IN WIRE #3

THROW IN WIRE #1

THROW IN WIRE #4

THROW IN WIRE #5

THROW IN WIRE #8 1B2

TO BED FIREPLACE

TO RCP-MICROWAVE

TO EXT ENT CTR AND BDRM TV RCPS

TO RCP-GFI LAVATORY

TO RCP-REFRIGERATOR

TO RCP-WASHER

TO RCP-DRYER

TO WATER HEATER

BRACKET-110V CONNECTOR  
155223-14-CHT (2)  
SCREW  
G39-10-12U (8)

BOX-4X4  
8289-01-000  
COVER-4X4  
8294-01-000  
WIRE ASM-GROUND  
133678-01-000  
SCREW-GROUND  
103291-01-000  
WIRE NUT  
8313-01-000 (3)  
SCREW  
G11-08-12U (2)  
CONNECTOR  
8356-01-000  
8356-02-000

CLAMP  
10495-04-000 (4)  
SCREW  
G67-10-12U (4) 1B2

BOX-4X4  
8289-01-000  
COVER-4X4  
8294-01-000  
WIRE ASM-GROUND  
133678-01-000  
SCREW-GROUND  
103291-01-000  
WIRE NUT  
8313-01-000 (3)  
SCREW  
G11-08-12U (2)  
CONNECTOR  
8356-01-000  
8356-02-000

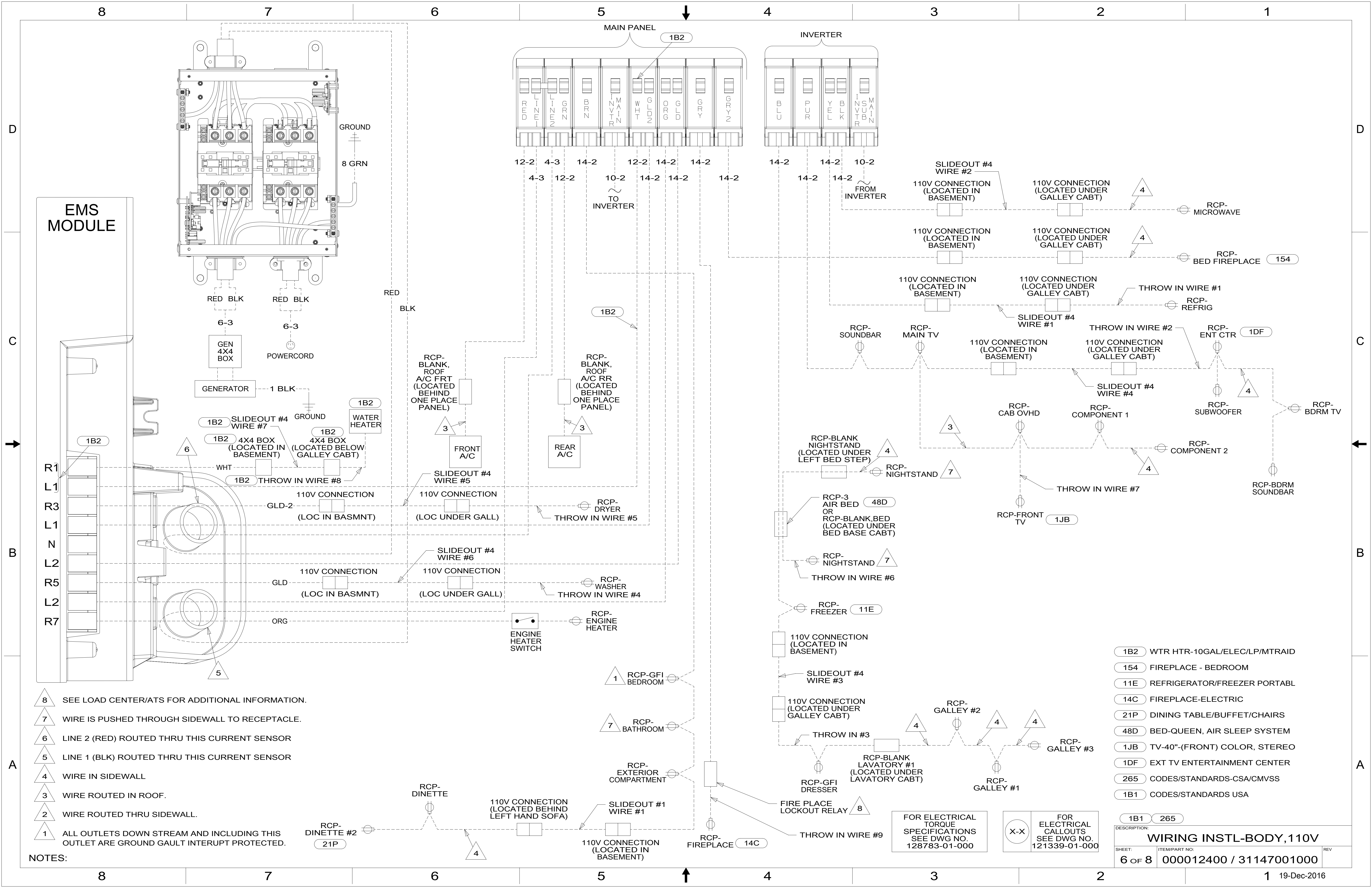
- 1B2 1B2 WTR HTR-10GAL/ELEC/LP/MTRAIID
- 154 FIREPLACE - BEDROOM
- 265 CODES/STANDARDS-CSA/CMVSS
- 1B1 CODES/STANDARDS USA

FOR ELECTRICAL TORQUE SPECIFICATIONS SEE DWG NO. 128783-01-000

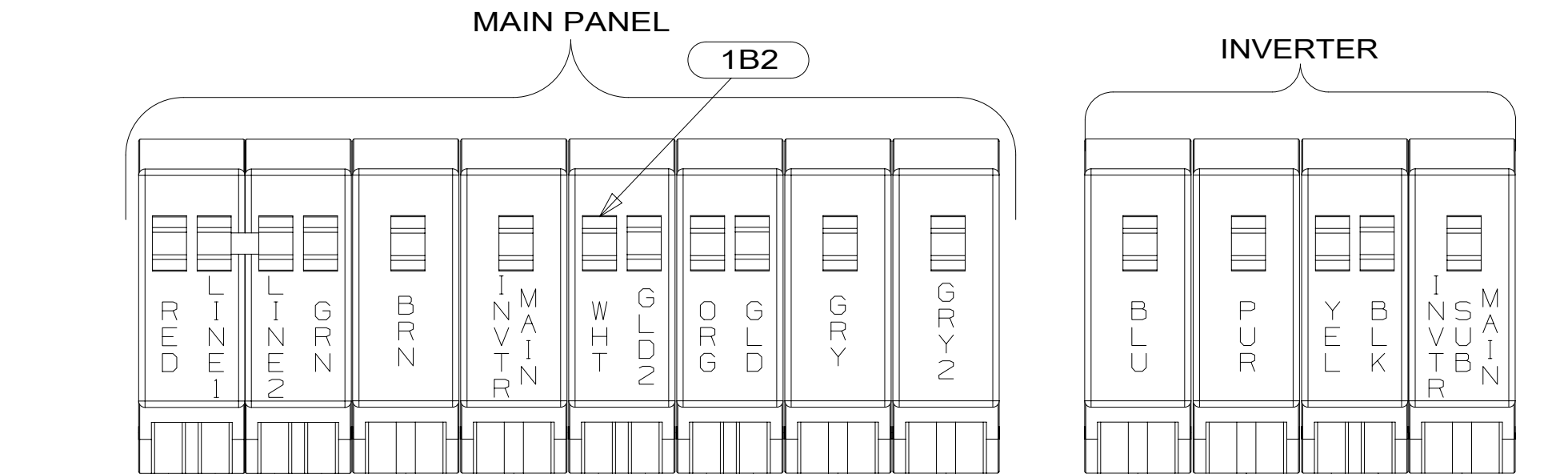
FOR ELECTRICAL CALLOUTS SEE DWG NO. 121339-01-000

DETAIL EA

|                                                |                                          |     |
|------------------------------------------------|------------------------------------------|-----|
| DESCRIPTION:<br><b>WIRING INSTL-BODY, 110V</b> |                                          |     |
| SHEET:<br>5 OF 8                               | ITEM/PART NO:<br>000012400 / 31147001000 | REV |
| 19-Dec-2016                                    |                                          |     |



# EMS MODULE



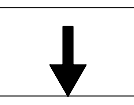
- NOTES:**
- ▲ 8 SEE LOAD CENTER/ATS FOR ADDITIONAL INFORMATION.
  - ▲ 7 WIRE IS PUSHED THROUGH SIDEWALL TO RECEPTACLE.
  - ▲ 6 LINE 2 (RED) ROUTED THRU THIS CURRENT SENSOR
  - ▲ 5 LINE 1 (BLK) ROUTED THRU THIS CURRENT SENSOR
  - ▲ 4 WIRE IN SIDEWALL
  - ▲ 3 WIRE ROUTED IN ROOF.
  - ▲ 2 WIRE ROUTED THRU SIDEWALL.
  - ▲ 1 ALL OUTLETS DOWN STREAM AND INCLUDING THIS OUTLET ARE GROUND GAULT INTERRUPT PROTECTED.

- 1B2 WTR HTR-10GAL/ELEC/LP/MTR/RAID
- 154 FIREPLACE - BEDROOM
- 11E REFRIGERATOR/FREEZER PORTABL
- 14C FIREPLACE-ELECTRIC
- 21P DINING TABLE/BUFFET/CHAIRS
- 48D BED-QUEEN, AIR SLEEP SYSTEM
- 1JB TV-40"-(FRONT) COLOR, STEREO
- 1DF EXT TV ENTERTAINMENT CENTER
- 265 CODES/STANDARDS-CSA/CMVSS
- 1B1 CODES/STANDARDS USA

FOR ELECTRICAL TORQUE SPECIFICATIONS SEE DWG NO. 128783-01-000

FOR ELECTRICAL CALLOUTS SEE DWG NO. 121339-01-000

|                                                |                                        |      |
|------------------------------------------------|----------------------------------------|------|
| DESCRIPTION:<br><b>WIRING INSTL-BODY, 110V</b> |                                        |      |
| SHEET: 6 OF 8                                  | ITEM/PART NO.: 000012400 / 31147001000 | REV: |
| 19-Dec-2016                                    |                                        |      |



D

D

|       |     | P36M          |   |
|-------|-----|---------------|---|
| RED   | 1B1 | 136135-07-085 |   |
|       | 265 | 136136-07-085 |   |
| GRN   | 1B1 | 136135-08-085 |   |
|       | 265 | 136136-08-085 |   |
| YEL   | 1B1 | 136131-05-054 | 1 |
|       | 265 | 136134-05-054 | 1 |
| GLD   | 1B1 | 136131-10-054 | 1 |
|       | 265 | 136134-10-054 | 1 |
| GLD-2 | 1B1 | 136131-20-054 | 1 |
|       | 265 | 136134-20-054 | 1 |
| WHT   | 1B1 | 136135-09-060 | 2 |
|       | 265 | 136136-09-060 | 2 |
| BLU   | 1B1 | 136131-02-085 | 1 |
|       | 265 | 136134-02-085 | 1 |
| BRN   | 1B1 | 136131-03-207 | 1 |
|       | 265 | 136134-03-207 | 1 |

1B2

|                           |     | P36M          |     |
|---------------------------|-----|---------------|-----|
| PUR                       | 1B1 | 136131-04-165 | 1   |
|                           | 265 | 136134-04-165 | 1   |
| ORG                       | 1B1 | 136131-16-170 |     |
|                           | 265 | 136134-16-170 |     |
| BLK                       | 1B1 | 136131-06-054 | 1   |
|                           | 265 | 136134-06-054 | 1   |
| GRY                       | 1B1 | 136131-15-060 | 3 2 |
|                           | 265 | 136134-15-060 | 3 2 |
| GRY-2                     | 1B1 | 136131-23-054 | 1   |
|                           | 265 | 136134-23-054 | 1   |
| INVERTER CHARGER MAIN     | 1B1 | 136137-01-058 |     |
|                           | 265 | 136138-01-058 |     |
| INVERTER CHARGER SUB MAIN |     | 136137-01-058 |     |
|                           |     | 136138-01-058 |     |
| CABLE ASM-MAIN,6 AWG      |     | 176841-01-025 |     |
| MAIN GROUND               |     | 136145-01-065 |     |
| ATS GROUND                |     | 136145-01-050 |     |
| INVERTER GROUND           |     | 136145-04-006 |     |
| GENERATOR CABLE ASM       |     | 136148-02-115 |     |

14C

154

C

C



B

B

A

A

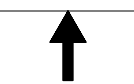
- NOTES:
- 3 SEE DETAIL BG FOR CONNECTOR INSTALLATION.
  - 2 SEE DETAIL GD FOR CONNECTOR INSTALLATION.
  - 1 SEE DETAIL GA FOR CONNECTOR INSTALLATION.

- 1B2 WTR HTR-10GAL/ELEC/LP/MTRCID
- 154 FIREPLACE - BEDROOM
- 14C FIREPLACE-ELECTRIC
- 265 CODES/STANDARDS-CSA/CMVSS
- 1B1 CODES/STANDARDS USA

FOR ELECTRICAL TORQUE SPECIFICATIONS SEE DWG NO. 128783-01-000

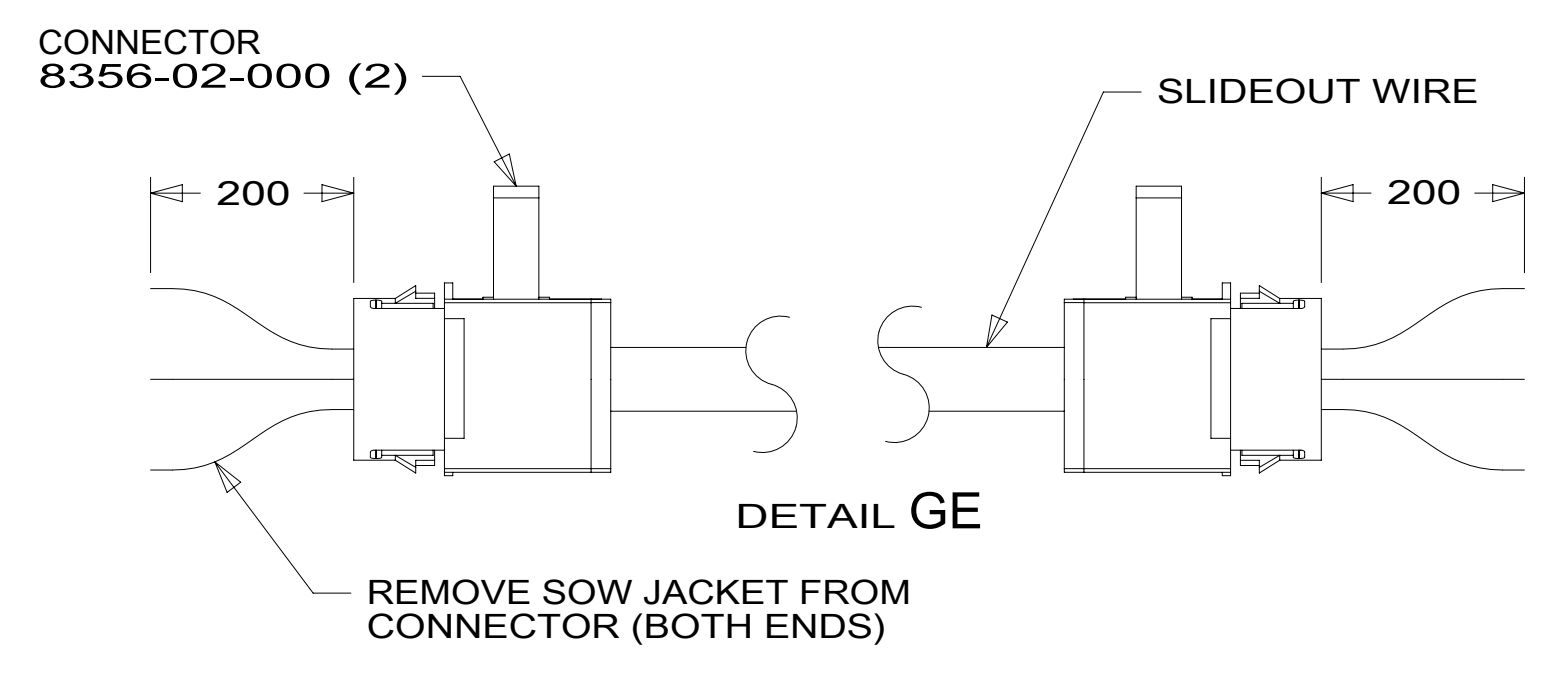
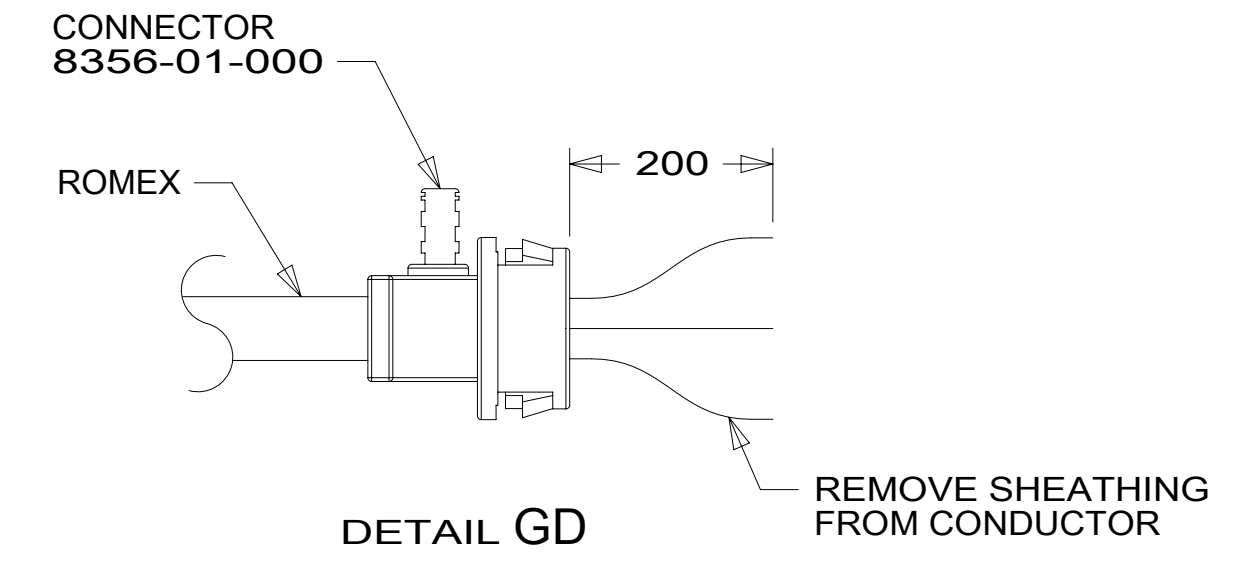
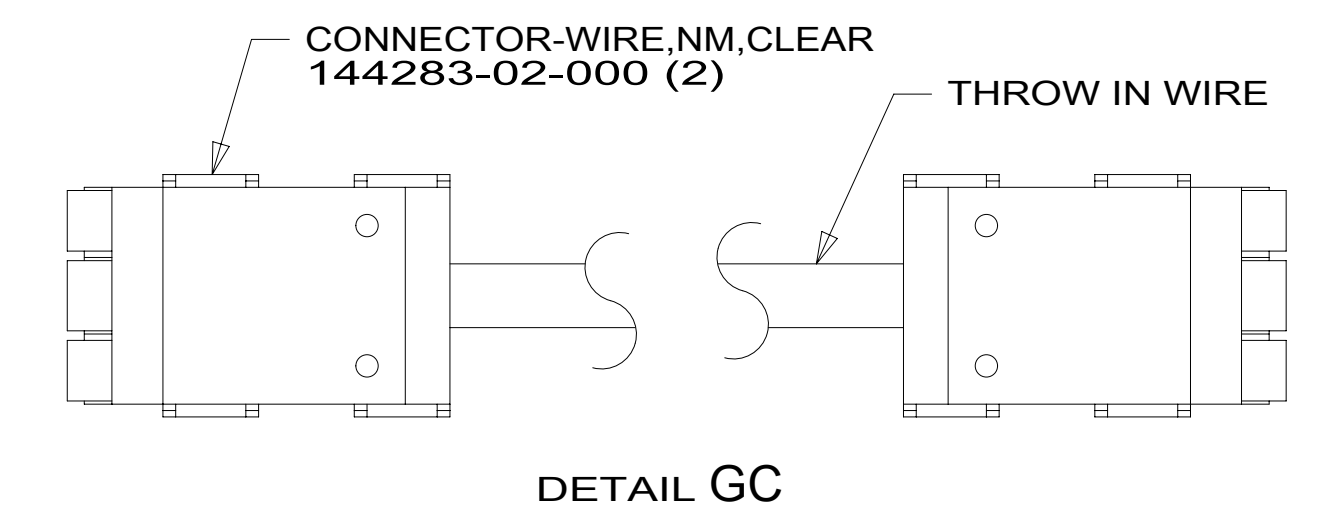
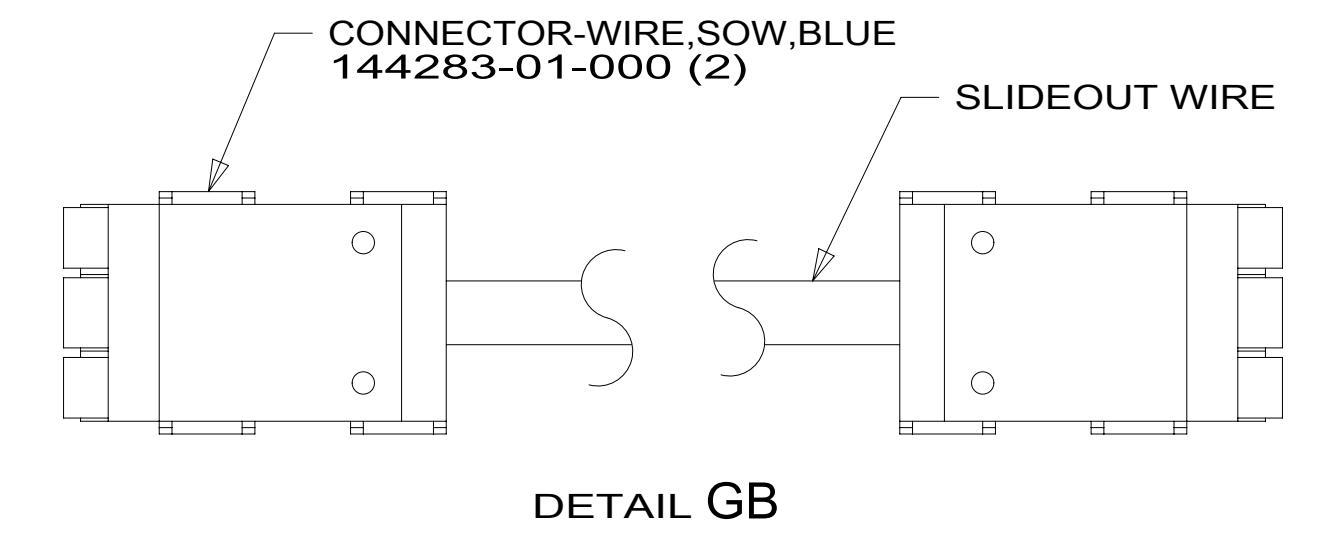
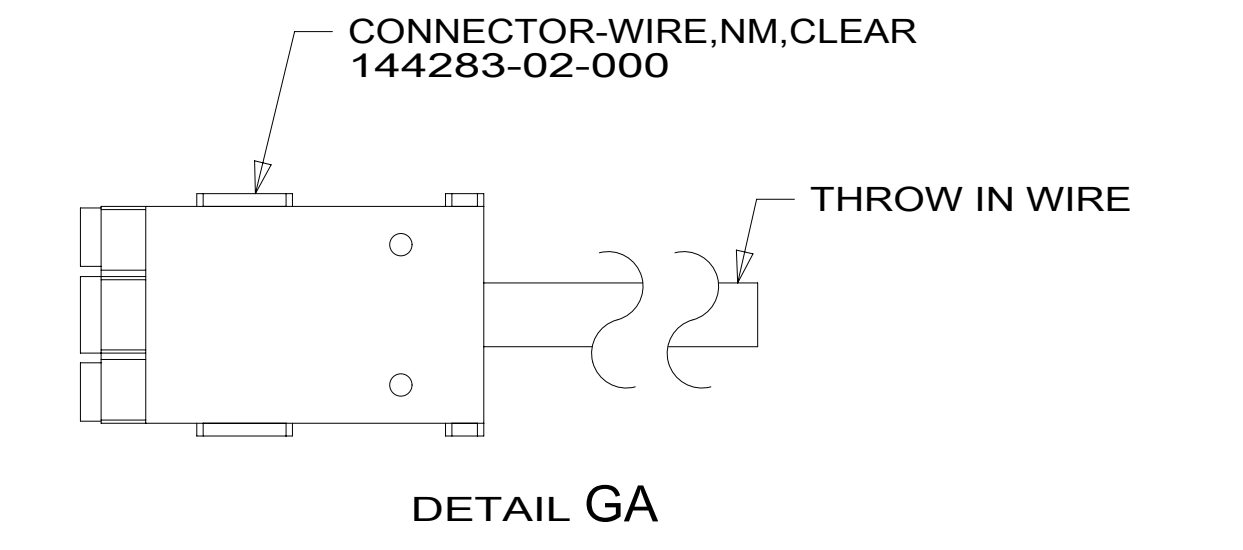
FOR ELECTRICAL CALLOUTS SEE DWG NO. 121339-01-000

|                         |                         |
|-------------------------|-------------------------|
| 1B1                     | 265                     |
| DESCRIPTION:            |                         |
| WIRING INSTL-BODY, 110V |                         |
| SHEET:                  | ITEM/PART NO:           |
| 7 OF 8                  | 000012400 / 31147001000 |
| REV                     |                         |



|                  |     |               |         |
|------------------|-----|---------------|---------|
| THROW IN WIRE #1 | 1B1 | 136131-05-032 | 1       |
|                  | 265 | 136134-05-032 | 1       |
| THROW IN WIRE #2 | 1B1 | 136131-04-028 | 1       |
|                  | 265 | 136134-04-028 | 1       |
| THROW IN WIRE #3 | 1B1 | 136131-02-075 | 1       |
|                  | 265 | 136134-02-075 | 1       |
| THROW IN WIRE #4 | 1B1 | 136131-10-040 | 1       |
|                  | 265 | 136134-10-040 | 1       |
| THROW IN WIRE #5 | 1B1 | 136131-20-040 | 1       |
|                  | 265 | 136134-20-040 | 1       |
| THROW IN WIRE #6 | 1B1 | 136131-02-086 |         |
|                  | 265 | 136134-02-086 |         |
| THROW IN WIRE #7 | 1B1 | 136131-04-010 | 1JB     |
|                  | 265 | 136134-04-010 | 1JB     |
| THROW IN WIRE #8 | 1B1 | 136135-09-055 | 5 1B2   |
|                  | 265 | 136136-09-055 | 5 1B2   |
| THROW IN WIRE #9 | 1B1 | 136131-15-010 | 6 5 14C |
|                  | 265 | 136134-15-010 | 6 5 14C |

|                     |               |       |
|---------------------|---------------|-------|
| SLIDEOUT #1 WIRE #1 | 136151-03-027 | 2     |
| SLIDEOUT #4 WIRE #1 | 136151-05-025 | 2     |
| SLIDEOUT #4 WIRE #2 | 136151-06-025 | 2     |
| SLIDEOUT #4 WIRE #3 | 136151-02-025 | 2     |
| SLIDEOUT #4 WIRE #4 | 136151-04-025 | 2     |
| SLIDEOUT #4 WIRE #5 | 136151-10-025 | 2     |
| SLIDEOUT #4 WIRE #6 | 136151-20-025 | 2     |
| SLIDEOUT #4 WIRE #7 | 136152-09-028 | 4 1B2 |
| SLIDEOUT #4 WIRE #8 | 136151-23-025 | 2 154 |



- NOTES:
- 6 SEE DETAIL BG FOR CONNECTOR INSTALLATION.
  - 5 SEE DETAIL GD FOR CONNECTOR INSTALLATION.
  - 4 SEE DETAIL GE FOR CONNECTOR INSTALLATION.
  - 3 SEE DETAIL GC FOR CONNECTOR INSTALLATION.
  - 2 SEE DETAIL GB FOR CONNECTOR INSTALLATION.
  - 1 SEE DETAIL GA FOR CONNECTOR INSTALLATION.

- 11E REFRIGERATOR/FREEZER PORTABL
- 1JB TV-40"-(FRONT) COLOR, STEREO
- 1B2 WTR HTR-10GAL/ELEC/LP/MTRAI
- 154 FIREPLACE - BEDROOM
- 14C FIREPLACE-ELECTRIC
- 265 CODES/STANDARDS-CSA/CMVSS
- 1B1 CODES/STANDARDS USA

FOR ELECTRICAL TORQUE SPECIFICATIONS SEE DWG NO. 128783-01-000

FOR ELECTRICAL CALLOUTS SEE DWG NO. 121339-01-000

DESCRIPTION: 1B1 265

**WIRING INSTL-BODY, 110V**

SHEET: 8 OF 8 ITEM/PART NO: 000012400 / 31147001000 REV

19-Dec-2016