

8

7

6

5

4

3

2

1



ITEM		
1	CABLE ASM (YEL) FROM COACH BATTERY FUSE TO COACH STUD,JUMP START (RED)	175207-52-063
2	CABLE ASM (YEL) FROM STUD,JUMP START (RED) TO COACH SIDE OF AUX START SOLENOID	175207-52-004
3	CABLE ASM (BLK) FROM STUD,JUMP START "GROUND" (BLK) TO FRAME RAIL GROUND	175211-01-010
4	CABLE ASM (ORG) FROM COACH BATTERY TO INVERTER FUSE	175207-66-010
5	CABLE ASM (ORG) FROM INVERTER FUSE TO INVERTER DISCONNECT SWITCH	175207-67-027
△ 2	CABLE ASM (ORG) FROM INVERTER DISCONNECT TO POSITIVE TERMINAL ON INVERTER	175207-65-005
6	CABLE ASM (BLK) FROM BATTERY TO INVERTER NEGATIVE TERMINAL	175211-01-028
7	CABLE ASM (BLK) FROM COACH BATTERY TO FRAME RAIL GROUND	175211-02-060
8	CABLE ASM (PUR) FROM CHASSIS BATTERY DISCONNECT TO CHASSIS ISOLATED STUD	175207-15-005
9	CABLE ASM (BLU) FROM CHASSIS DISCONNECT FUSE TO LEVELING SYSTEM PUMP	141416-26-093
△ 1	CABLE ASM (BLK) FROM LEVELING SYSTEM TO FRAME RAIL GROUND	133567-11-005
10	CABLE ASM (GRN) FROM COACH BAT DISC RELAY TO PASS THRU STUD IN FRONT LEFT COMPT	175207-42-115
11	CABLE ASM (GRN) FROM PASS THRU STUD IN FRONT LEFT COMPT TO GENERATOR	175207-42-031
12	CABLE ASM (BLK) FROM GENERATOR TO FRAME RAIL GROUND BOLT	175211-02-020
13	CABLE ASM (YEL) JUMPER BETWEEN POSITIVE POSTS ON COACH BATTERY	141417-52-004
14	CABLE ASM (YEL) JUMPER BETWEEN POSITIVE POSTS ON COACH BATTERY	141417-51-002 (4)
15	CABLE ASM (BLK) JUMPER BETWEEN NEGATIVE POSTS ON COACH BATTERY	133568-12-004
16	CABLE ASM (BLK) JUMPER BETWEEN NEGATIVE POSTS ON COACH BATTERY	133568-11-002 (4)
17	CABLE ASM (RED) JUMPER BETWEEN POSITIVE POSTS IN LEFT FRONT COMPT	141417-32-002
18	CABLE ASM-TEMPERATURE,BATTERY	175385-03-000
19	CABLE ASM (RED) FROM CHASSIS BATTERY FUSE TO CHASSIS SIDE OF AUX START SOLENOID	175207-35-008
20	CABLE ASM (RED) FROM CHASSIS BATTERY TO CHASSIS BATTERY FUSE	175207-35-004
21	CABLE ASM (YEL) FROM COACH BATTERY TO COACH BATTERY FUSE	175207-52-006
22	CABLE ASM (YEL) FROM MULTIPLEX BREAKER TO MULTIPLEX PANEL	189044-01-036
23	CABLE ASM (YEL) FROM COACH DISCONNECT TO MULTIPLEX BREAKER	141415-57-004

D

D

C

C

B

B

A

A

3. CABLE AS QUANTITIES ARE DEFINED IN THE ABOVE TABLE. MULTIPLE CALLOUTS FOR THE SAME ITEM IN DIFFERENT VIEWS DO NOT INDICATE MULTIPLE QUANTITIES.

△ 2 SEE WIRING INSTL-BODY,110V FOR ADDITIONAL INFORMATION.

△ 1 SEE LEVELING SYSTEM INSTL FOR ADDITIONAL INFORMATION.

NOTES:

265 CODES/STANDARDS-CSA/CMVSS

1B1 CODES/STANDARDS USA

1B1 265

FOR ELECTRICAL TORQUE SPECIFICATIONS SEE DWG NO. 128783-01-000

FOR ELECTRICAL CALLOUTS SEE DWG NO. 121339-01-000

DESCRIPTION: WIRING INSTL-CHASSIS		
SHEET: 2 OF 8	ITEM/PART NO: 000012120 / 31138301000	REV

8

7

6

5

4

3

2

1 19-Jan-2017



BATTERY-12V
 174923-01-000 (6)
 BOLT
 51387-06-000 (8)
 NUT-HEX
 D39-05-00U (8)
 WASHER-RUBBER
 184541-01-CHT (8)
 STRAP-BATTERY
 TIE DOWN
 138914-01-CHT (6)

HOLDER-FUSE
 115187-02-000
 FUSE-400 AMP
 115187-05-000
 SCREW
 G39-10-16U (2)

HOLDER-FUSE
 188460-01-000
 FUSE-500 AMP
 188461-04-000
 SCREW
 G39-10-12U (2)

TRAY ASM-BATTERY
 176166-01-CHT (2)
 NUT
 D39-06-00U (6)
 WASHER
 E13-17-00U (6)

CONNECT SOLAR PANEL
 GROUND HERE
 CIRCUIT Z2D
 TAPE CIRCUIT Z2D
 BACK TO HARNESS

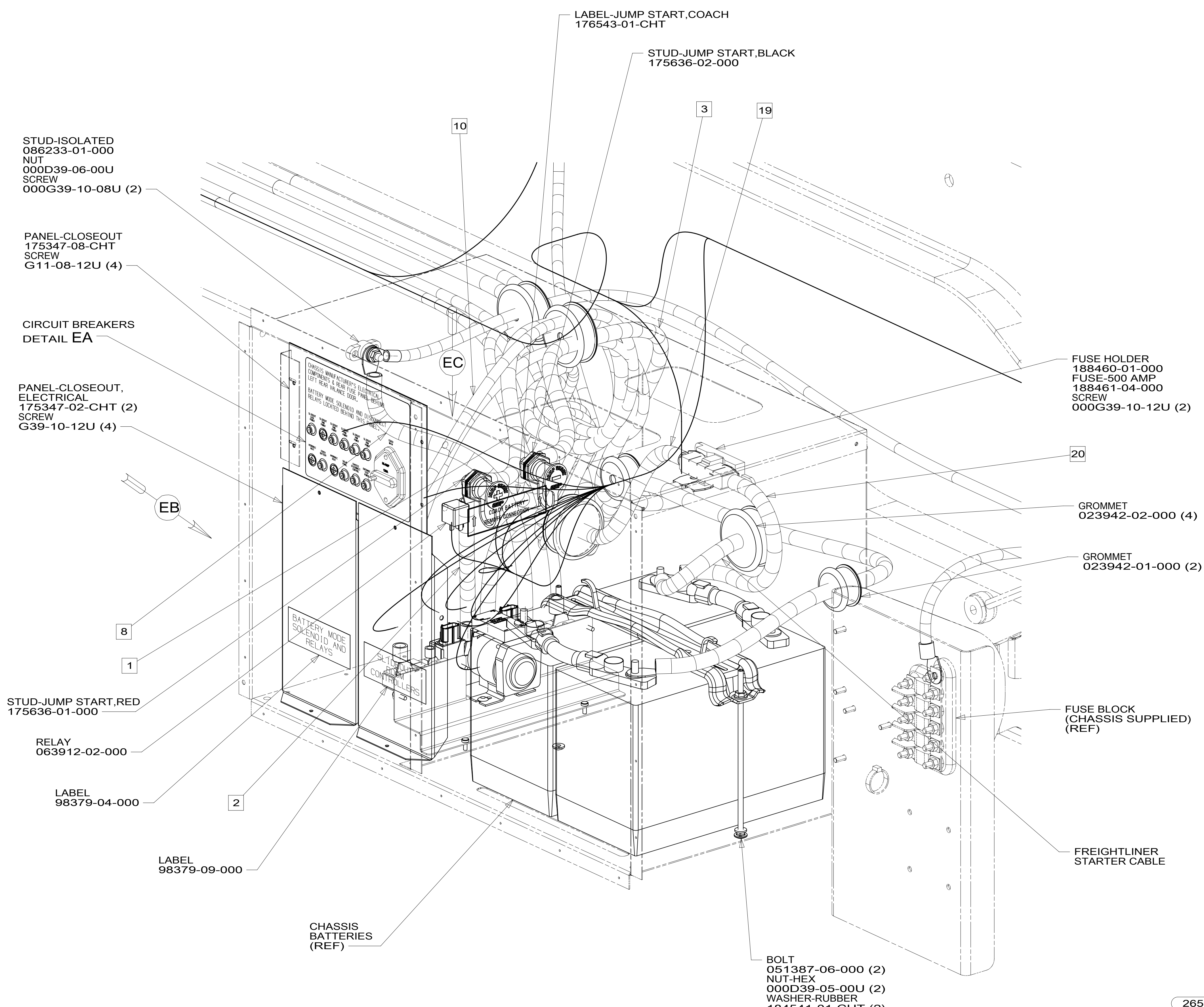
- 29W SOLAR PANEL/BATTERY CHRГ W/O
- 282 SOLAR PANEL - 100 WATT
- 265 CODES/STANDARDS-CSA/CMVSS
- 1B1 CODES/STANDARDS USA

FOR ELECTRICAL
 TORQUE
 SPECIFICATIONS
 SEE DWG NO.
 128783-01-000

FOR ELECTRICAL
 CALLOUTS
 SEE DWG NO.
 121339-01-000

DESCRIPTION:	1B1 265	
WIRING INSTL-CHASSIS		
SHEET:	ITEM/PART NO:	REV
3 OF 8	000012120 / 31138301000	

VIEW CA



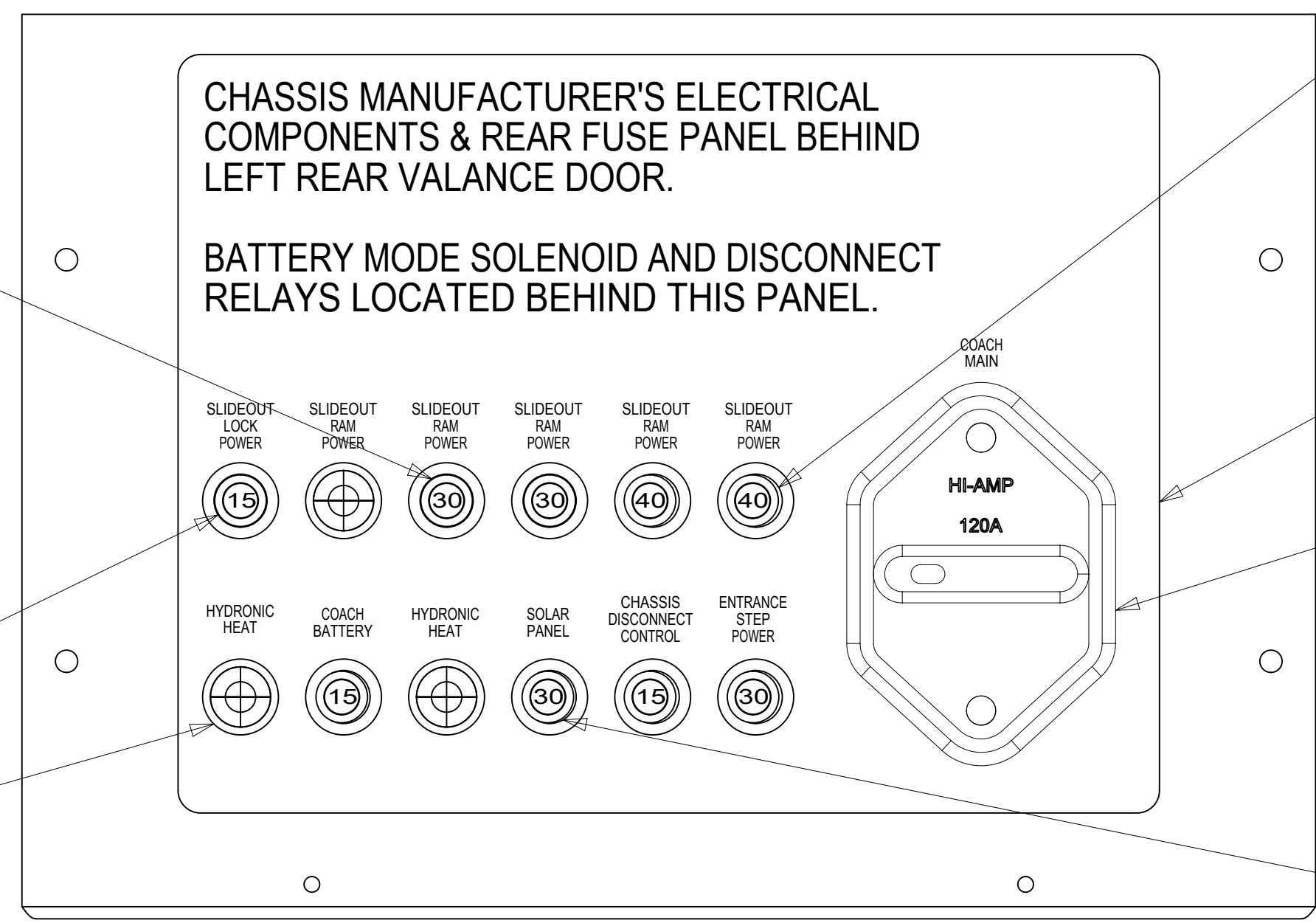
VIEW DA

FOR ELECTRICAL TORQUE SPECIFICATIONS SEE DWG NO. 128783-01-000

FOR ELECTRICAL CALLOUTS SEE DWG NO. 121339-01-000

- 265 CODES/STANDARDS-CSA/CMVSS
- 1B1 CODES/STANDARDS USA

DESCRIPTION:		1B1	265
WIRING INSTL-CHASSIS			
SHEET:	ITEM/PART NO.:	REV	
4 OF 8	000012120 / 31138301000		



DETAIL EA

CHASSIS MANUFACTURER'S ELECTRICAL COMPONENTS & REAR FUSE PANEL BEHIND LEFT REAR VALANCE DOOR.
BATTERY MODE SOLENOID AND DISCONNECT RELAYS LOCATED BEHIND THIS PANEL.

CIRCUIT BREAKER-40 AMP
93655-03-000 (2)
SCREW
G19-10-08U (2) 3

LABEL-CIRCUIT BREAKER
093236-82-000

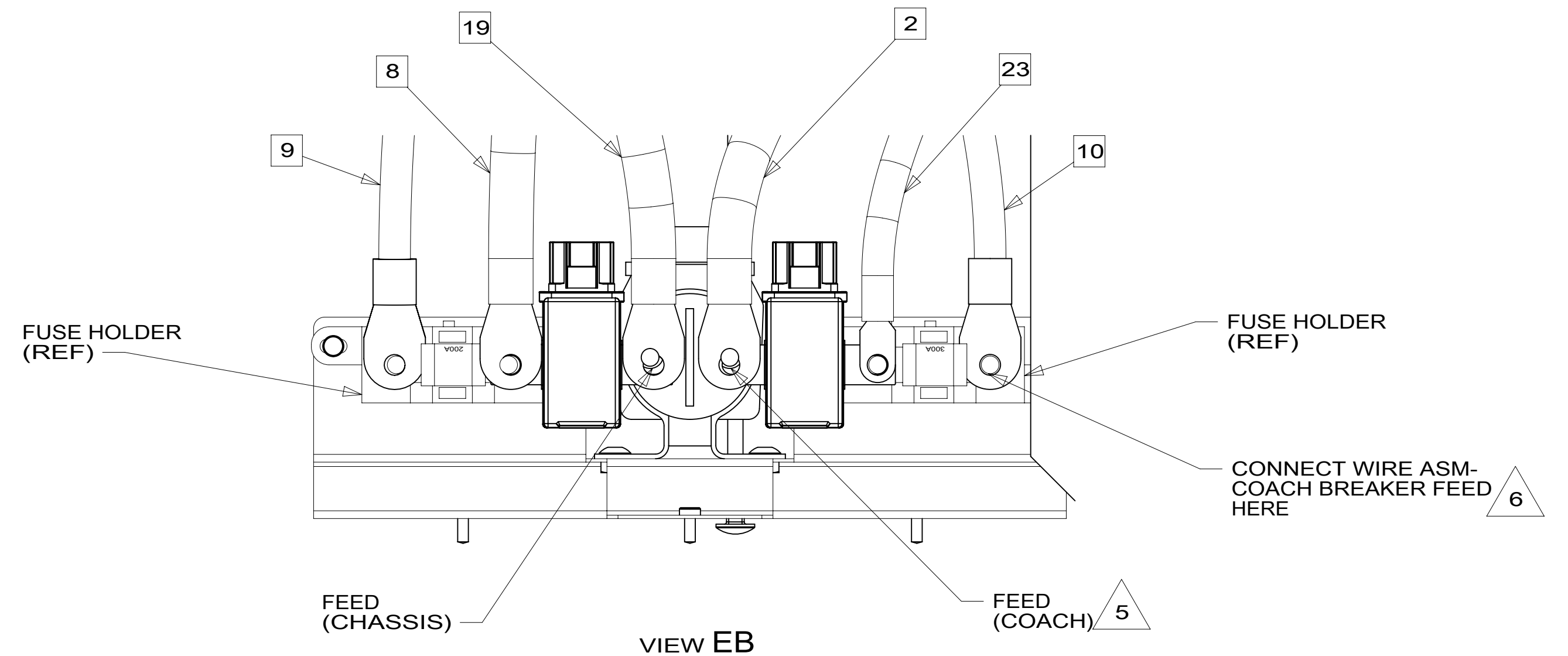
CIRCUIT BREAKER-120 AMP
188890-01-000
SCREW
G39-10-12U (2)

CIRCUIT BREAKER-30 AMP
093655-02-000
SCREW
G52-06-05U
SPACER-CIRCUIT BREAKER
141789-01-000

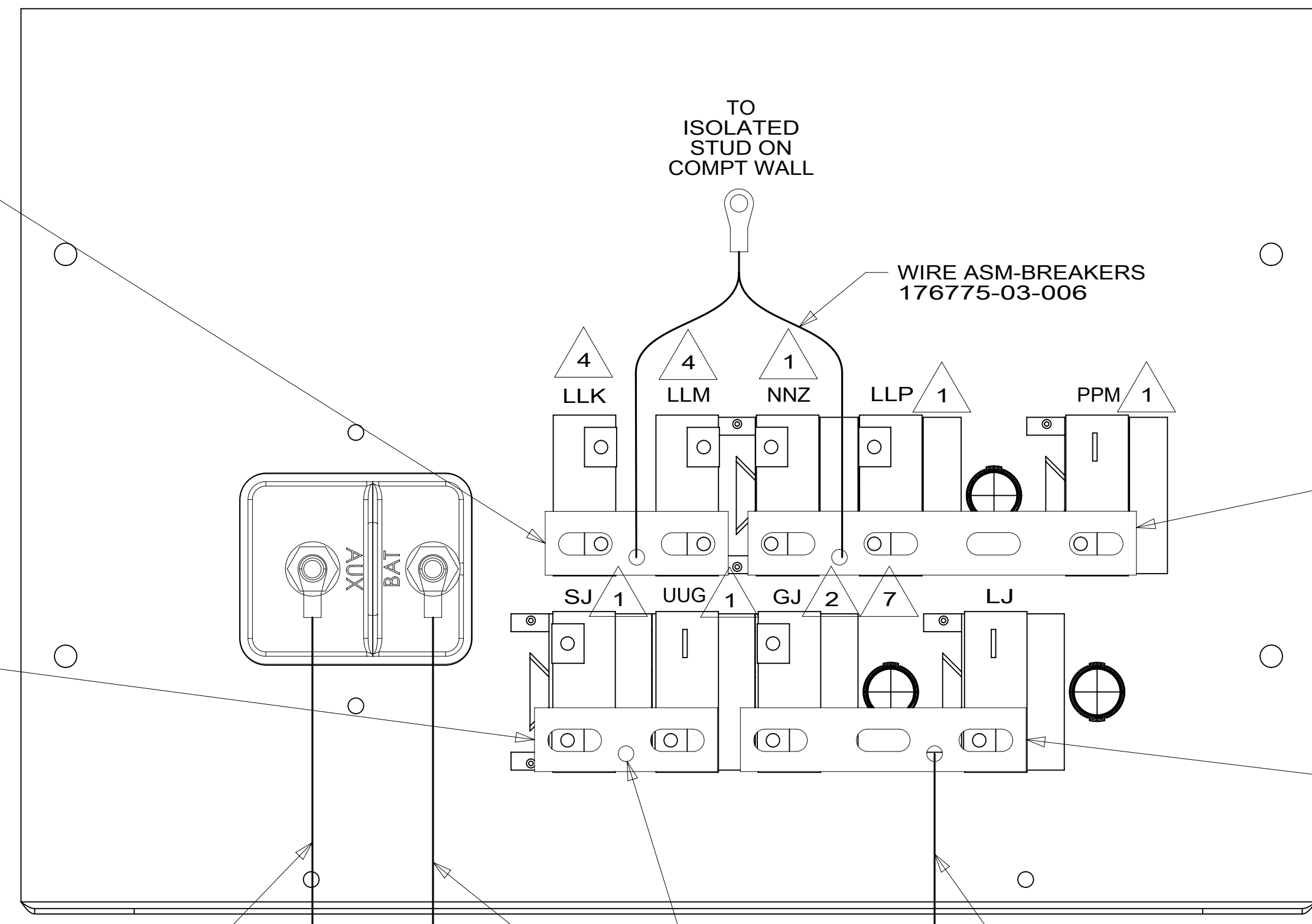
3 CIRCUIT BREAKER-30 AMP
93655-02-000 (3)
SCREW
G52-06-05U (3)
SPACER-CIRCUIT BREAKER
141789-01-000 (3)

3 CIRCUIT BREAKER-15 AMP
93654-02-000 (3)
SCREW
G52-06-05U (3)
SPACER-CIRCUIT BREAKER
141789-01-000 (3)

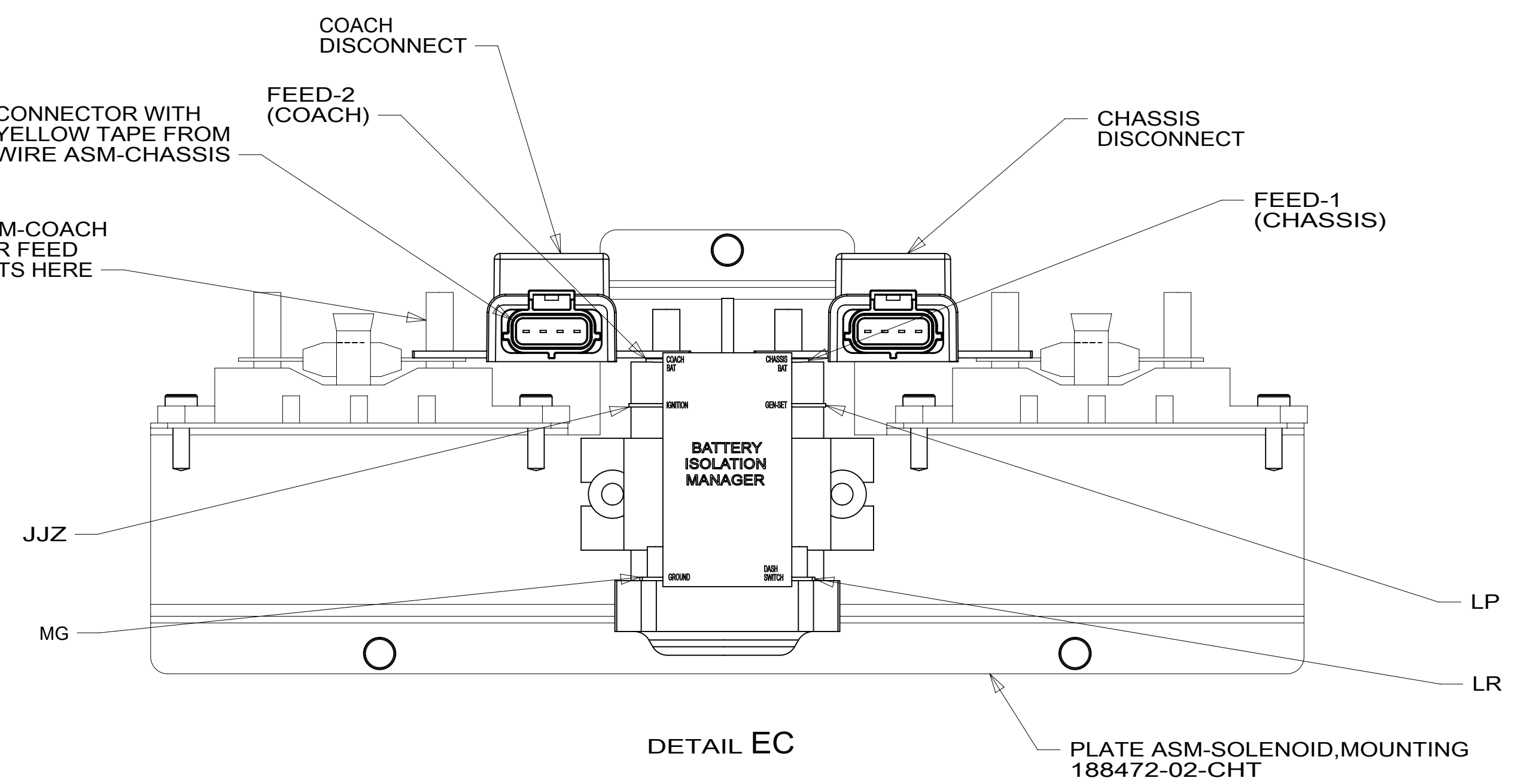
29W PLUG-PLASTIC
81211-06-000 (4)
282 81211-06-000 (3)



VIEW EB



DETAIL EA
(BACK VIEW-COMPONENTS)



DETAIL EC

- NOTES:
- 4 FROM WIRE ASM-SLIDEOUT POWER.
 - 3 REPLACE EXISTING SCREW TO PROPERLY ATTACH BREAKER TO BUSS BAR.
 - 2 FROM WIRE ASM-CHASSIS. TIE BACK TO HARNESS WITH 29W
 - 1 CIRCUITS BRANCH FROM WIRE ASM-CHASSIS.

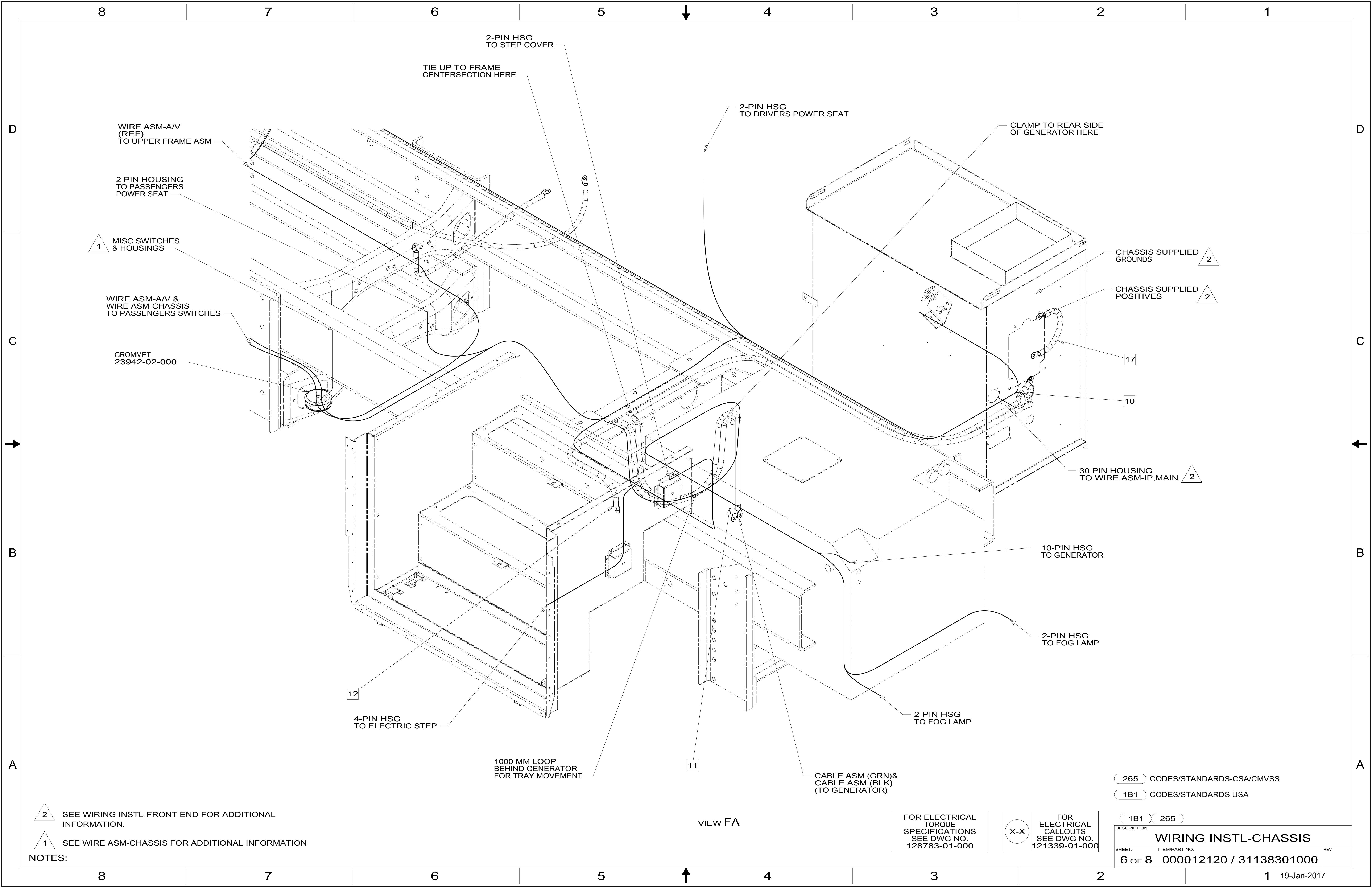
- 7 WIRE TO BE MARKED BY WRAP OF WHT TAPE 19 MM WIDE WITHIN 50 MM OF END.
- 6 WIRE TO BE MARKED BY WRAP OF GRN TAPE 19 MM WIDE WITHIN 50 MM OF END.
- 5 WIRE TO BE MARKED BY WRAP OF YEL TAPE 19 MM WIDE WITHIN 50 MM OF END.

- 29W SOLAR PANEL/BATTERY CHRNG W/O
- 282 SOLAR PANEL - 100 WATT
- 265 CODES/STANDARDS-CSA/CMVSS
- 1B1 CODES/STANDARDS USA

FOR ELECTRICAL TORQUE SPECIFICATIONS SEE DWG NO. 128783-01-000

FOR ELECTRICAL CALLOUTS SEE DWG NO. 121339-01-000

DESCRIPTION:		1B1 265	
WIRING INSTL-CHASSIS			
SHEET:	ITEM/PART NO:	REV	
5 OF 8	000012120 / 31138301000		



2 SEE WIRING INSTL-FRONT END FOR ADDITIONAL INFORMATION.

1 SEE WIRE ASM-CHASSIS FOR ADDITIONAL INFORMATION

NOTES:

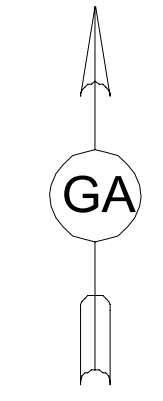
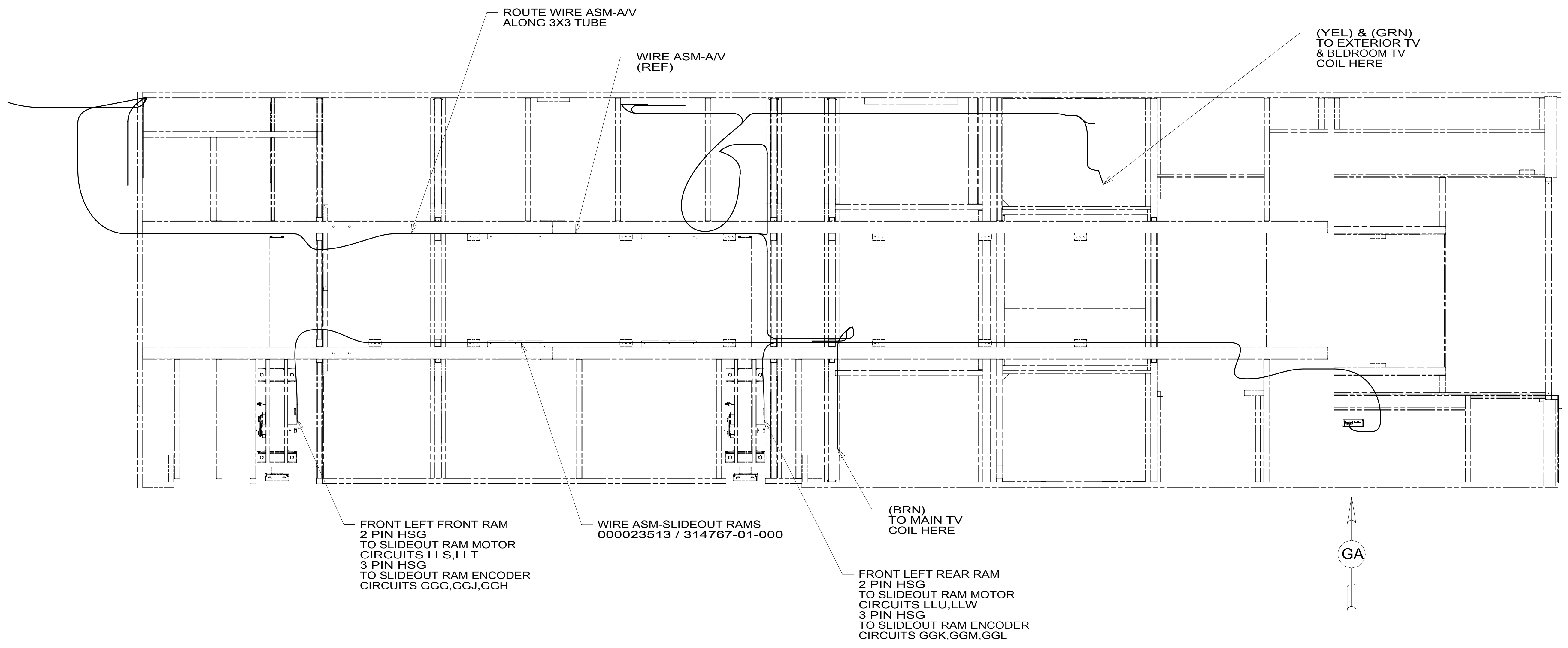
FOR ELECTRICAL TORQUE SPECIFICATIONS SEE DWG NO. 128783-01-000

FOR ELECTRICAL CALLOUTS SEE DWG NO. 121339-01-000

265	CODES/STANDARDS-CSA/CMVSS
1B1	CODES/STANDARDS USA
1B1	265
DESCRIPTION: WIRING INSTL-CHASSIS	
SHEET: 6 OF 8	ITEM/PART NO.: 000012120 / 31138301000
REV	

8 7 6 5 4 3 2 1

D
C
B
A



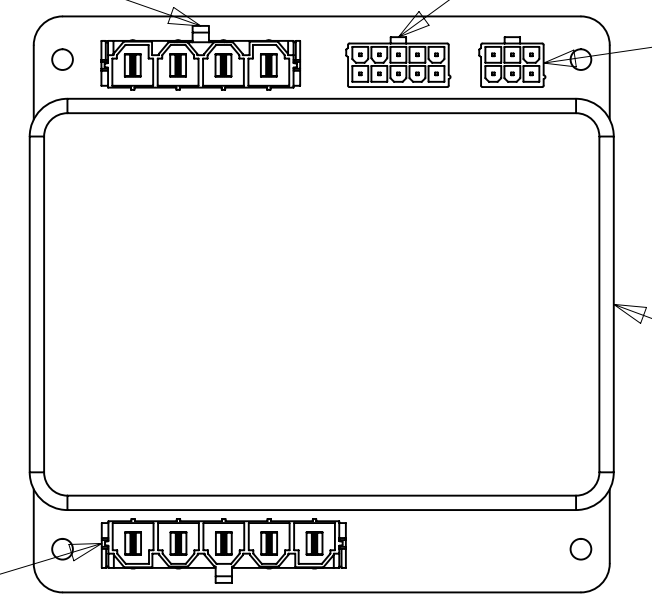
WIRE ASM-SLIDEOUT POWER
000023514 / 314768-01-000
4 PIN HSG
CIRCUITS
LLK,LLT,
LLW,LLU

FROM WIRE
ASM-COACH
10 PIN HSG
CIRCUITS
DU,GGD,GGE,
GGF,DR,VVP,
DDJ,VVN,VVR

FROM WIRE
ASM-SLIDEOUT
RAM,LEFT
6 PIN HSG
CIRCUITS
GGH,GGG,GGJ
GGL,GJK,GGM

CONTROL-FLS/RPE,DUAL RA
171058-02-000
SCREW
G39-08-12U (4)
FUSE-5 AMP
62901-02-000

WIRE ASM-
SLIDEOUT
RAM,LEFT
5 PIN HSG
CIRCUITS
LLS,LLT,LLW,LLU



VIEW GA
(LOCATED BEHIND CHASSIS
BREAKER PANEL)

1. ALL WIRES TO BE CLAMPED WITH 10495-01-000
OR WIRE TIE 8343-02-000 EVERY 600MM, UNLESS
OTHERWISE SPECIFIED.

NOTES:

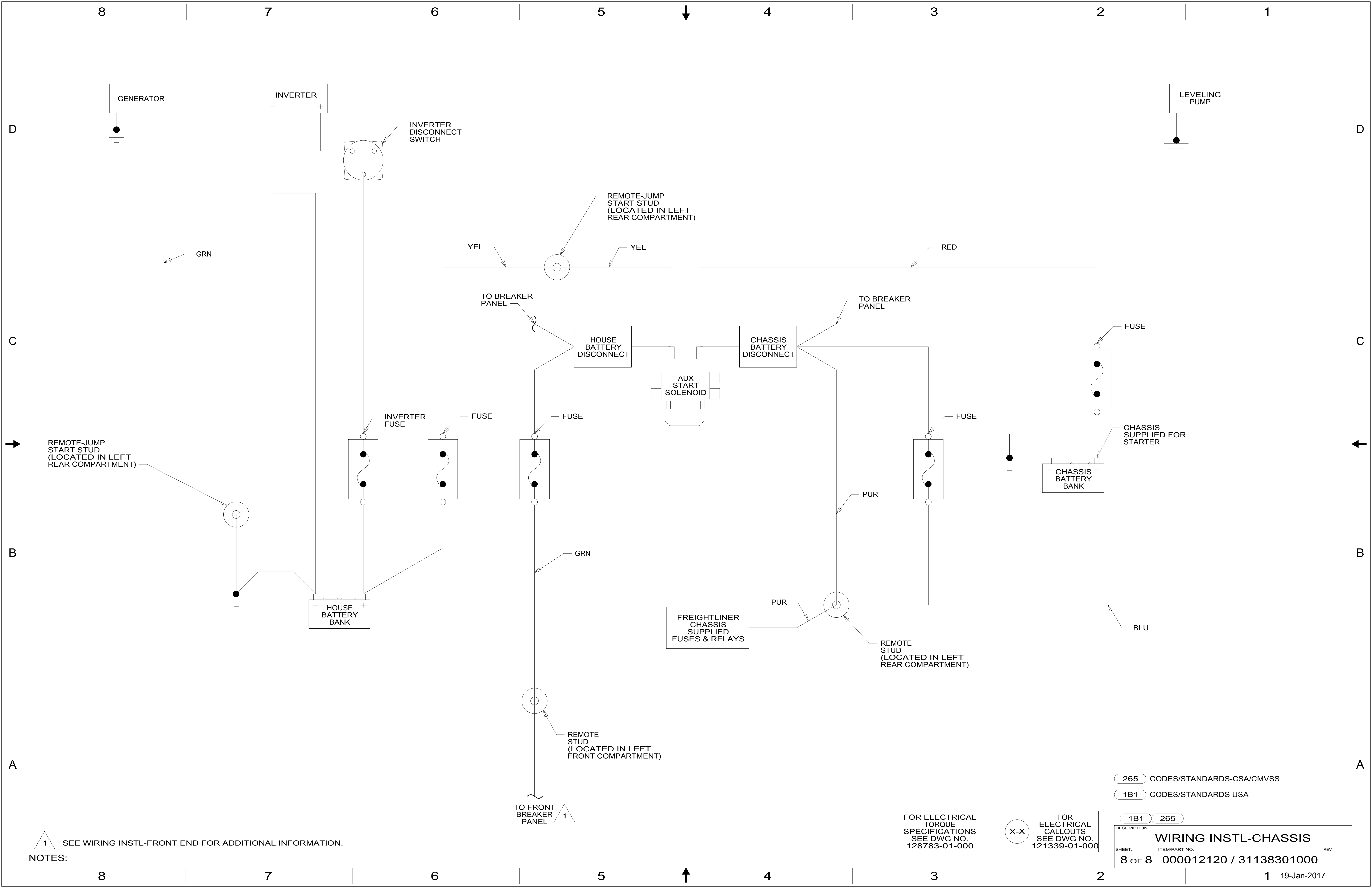
FOR ELECTRICAL
TORQUE
SPECIFICATIONS
SEE DWG NO.
128783-01-000

FOR
ELECTRICAL
CALLOUTS
SEE DWG NO.
121339-01-000

- 265 CODES/STANDARDS-CSA/CMVSS
- 1B1 CODES/STANDARDS USA

DESCRIPTION: WIRING INSTL-CHASSIS	
SHEET: 7 OF 8	ITEM/PART NO: 000012120 / 31138301000
REV 1 19-Jan-2017	

8 7 6 5 4 3 2 1



1 SEE WIRING INSTL-FRONT END FOR ADDITIONAL INFORMATION.

FOR ELECTRICAL TORQUE SPECIFICATIONS SEE DWG NO. 128783-01-000

FOR ELECTRICAL CALLOUTS SEE DWG NO. 121339-01-000

265	CODES/STANDARDS-CSA/CMVSS
1B1	CODES/STANDARDS USA
1B1	265
DESCRIPTION: WIRING INSTL-CHASSIS	
SHEET: 8 OF 8	ITEM/PART NO: 000012120 / 31138301000
REV	