

3 FAN-DEFROSTER
154851-01-000
TAPE-FOAM
99069-01-000
(120)(4)
(45)(2)
SCREW
G11-08-12U (6)
PANEL-PLENUM
170841-04-CHT
SCREW
G39-10-12U (6)
HOSE
179183-01-000
(650)
ADAPTOR-HOSE
171749-01-CHT (2)

6 2 AND 5 PIN HSG
TO WIRE ASM-ROOF
TO SUNVISOR SHADE
(6) BUTT SPLICES
SOLAR SHADE
HHK-BLK
HHL-BLK/GRY
NIGHT SHADE
HHM-BLK
HHN-BLK/GRY
KE-BRN (2)

571 SPEAKER
171547-01-CHT (2)
SCREW
G11-08-20U (8)
57P SPEAKER
193631-01-000 (3)
SCREW
G11-08-20U (12)

8 157 RADIO-KIT, SXM
000111632 / 321635-01-000

RECEPTACLE-12V
111414-01-000
DETAIL AA

WIRE ASM-IP, MAIN
000012123 / 311385-01-000

6 PIN HOUSING
TO LEFT MIRROR

ALARM-JACKS DOWN
160876-01-000
BRACKET-BUZZER
173102-01-CHT
SCREW
G39-10-12U (2)

RECEPTACLE-12V
111414-01-000
DETAIL AA

BRACKET-RELAY PANEL
145448-01-CHT
SCREW
G67-10-08U (4)

12V BREAKER PANEL
DETAIL CA

DOOR ASM
145066-03-CHT
SCREW
G67-06-10U (6)
SCREW
G67-10-08U (4)

AMPLIFIER
000029137 / 312665-02-000
SCREW
G39-10-08U (4)
WIRE ASM-AMP
194217-01-000
194217-02-000
194217-03-000

PANEL ASM
145063-08-CHT
SCREW
G67-06-10U (6)

BOX ASM-SPEAKER
193358-01-XXX
SCREW
G11-10-16U (4)
SPEAKER-8"
193633-01-000
WIRE ASM-PIGTAIL
193633-04-000
SCREW
G11-10-12U (4)
GRILL
193633-02-000
PLATE-SPEAKER
194221-01-000 (2)
SCREW
G11-08-08U (8)
SEAL
185989-07-000
(360 MM) (2)
SCREW
G11-10-12U (4)

TAPE (2)
(400 MM) 4

LIGHT-TAPE, LED
187693-04-CHT 7

LCS-1
2

SWITCHES
DETAIL DB

- 9 CONNECT 2-12 PIN HSGS TO EACH OTHER WITHOUT 57P.
- 8 WIRE TIE SAT TUNER TO DASH RADIO WIRING.
- 7 TUCK IN GROOVE ON BOTTOM SIDE OF COUNTER TOP.
- 6 CUT VISOR WIRING TO 300MM BEFORE CONNECTING.
- 5 SEE WIRING INSTL-BODY, 12V FOR ADDITIONAL INFORMATION.
- 4 USE TAPE 8363-03-000 TO SECURE WIRES IN A-POST.
- 3 APPLY FOAM TAPE TO BOTTTOM OF FAN TO SEAL FAN TO PANEL.
2. USE SEAL-TRIM 093305-01-CHT TO PROTECT WIRES FROM SHARP EDGES.
1. SEE WIRING INSTL-CHASSIS FOR ADDITIONAL INFORMATION.

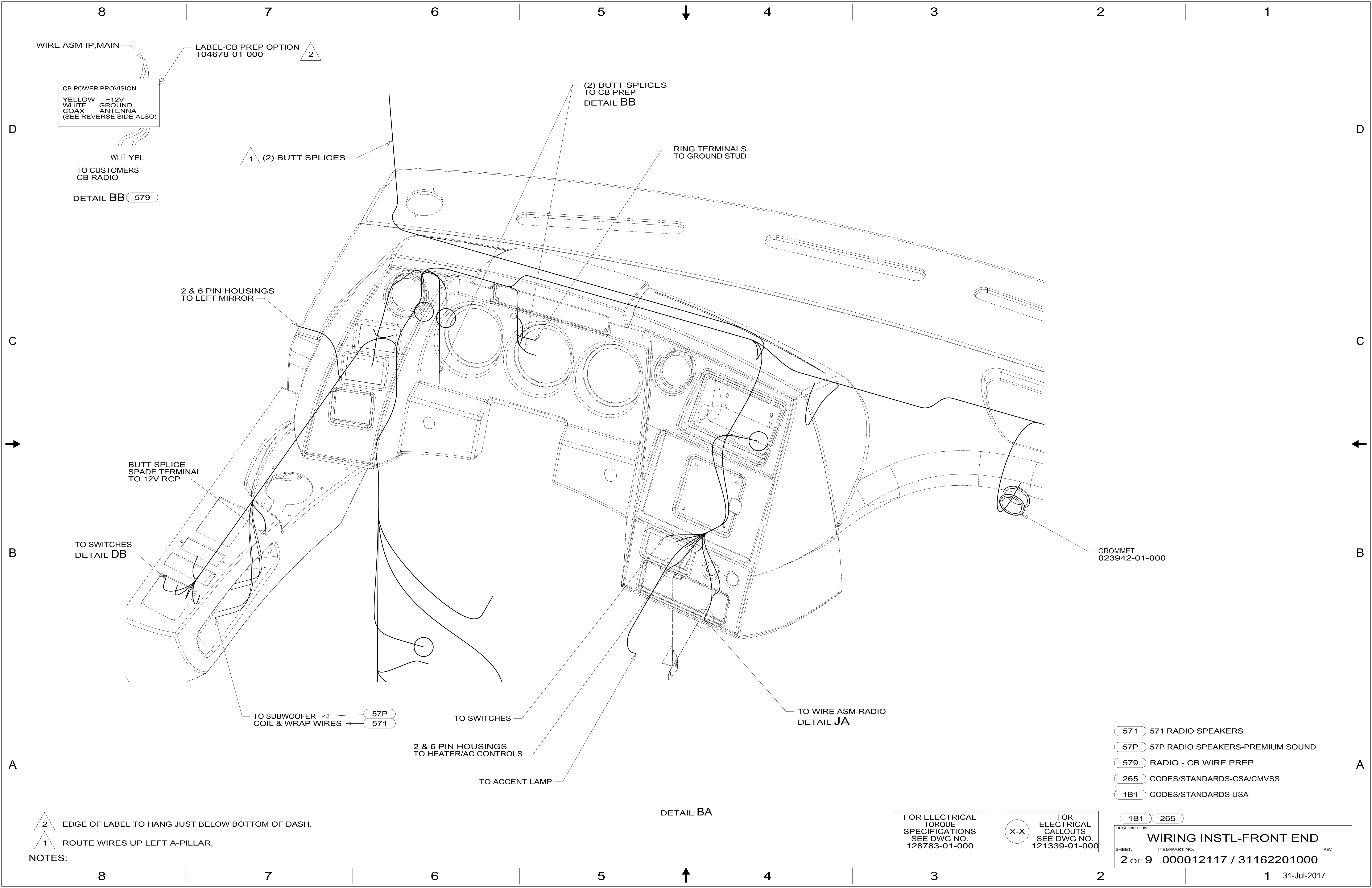
- 571 571 RADIO SPEAKERS
- 57P 57P RADIO SPEAKERS-PREMIUM SOUND
- 157 INFOTAIN CTR/GPS SIRIUSXM
- 265 CODES/STANDARDS-CSA/CMVSS
- 1B1 CODES/STANDARDS USA

WINNEBAGO
COPYRIGHT 2016 WINNEBAGO INDUSTRIES, INC.

DSNR:	ALL DIMENSIONS ARE IN MILLIMETERS	
DFFR:	MATERIAL:	
UNSPECIFIED TOLERANCES:		
WHOLE DIM (X) :	3	
ONE-PLACE (X.X) :	1.5	
TWO-PLACE (X.XX) :	0.50	
ANGLE :	1°	
REFER TO ES0018 FOR FASTENER TIGHTENING GUIDELINES	WEIGHT: (LBS)	FIRST USED: 17 P36M
DESCRIPTION: WIRING INSTL-FRONT END		
SHEET: 1 OF 9	ITEM/PART NO: 000012117 / 31162201000	REV

FOR ELECTRICAL TORQUE SPECIFICATIONS SEE DWG NO. 128783-01-000

FOR ELECTRICAL CALLOUTS SEE DWG NO. 121339-01-000



WIRE ASM-IP, MAIN

CB POWER PROVISION
 YELLOW +12V
 WHITE GROUND
 COAX ANTENNA
 (SEE REVERSE SIDE ALSO)

LABEL-CB PREP OPTION
 104678-01-000

(2) BUTT SPLICES
 TO CB PREP
 DETAIL BB

RING TERMINALS
 TO GROUND STUD

1 (2) BUTT SPLICES

WHT YEL
 TO CUSTOMERS
 CB RADIO

DETAIL BB 579

2 & 6 PIN HOUSINGS
 TO LEFT MIRROR

BUTT SPLICE
 SPADE TERMINAL
 TO 12V RCP

TO SWITCHES
 DETAIL DB

GROMMET
 023942-01-000

TO SUBWOOFER
 COIL & WRAP WIRES

57P
 571

TO SWITCHES

TO WIRE ASM-RADIO
 DETAIL JA

2 & 6 PIN HOUSINGS
 TO HEATER/AC CONTROLS

TO ACCENT LAMP

DETAIL BA

- 571 571 RADIO SPEAKERS
- 57P 57P RADIO SPEAKERS-PREMIUM SOUND
- 579 RADIO - CB WIRE PREP
- 265 CODES/STANDARDS-CSA/CMVSS
- 1B1 CODES/STANDARDS USA

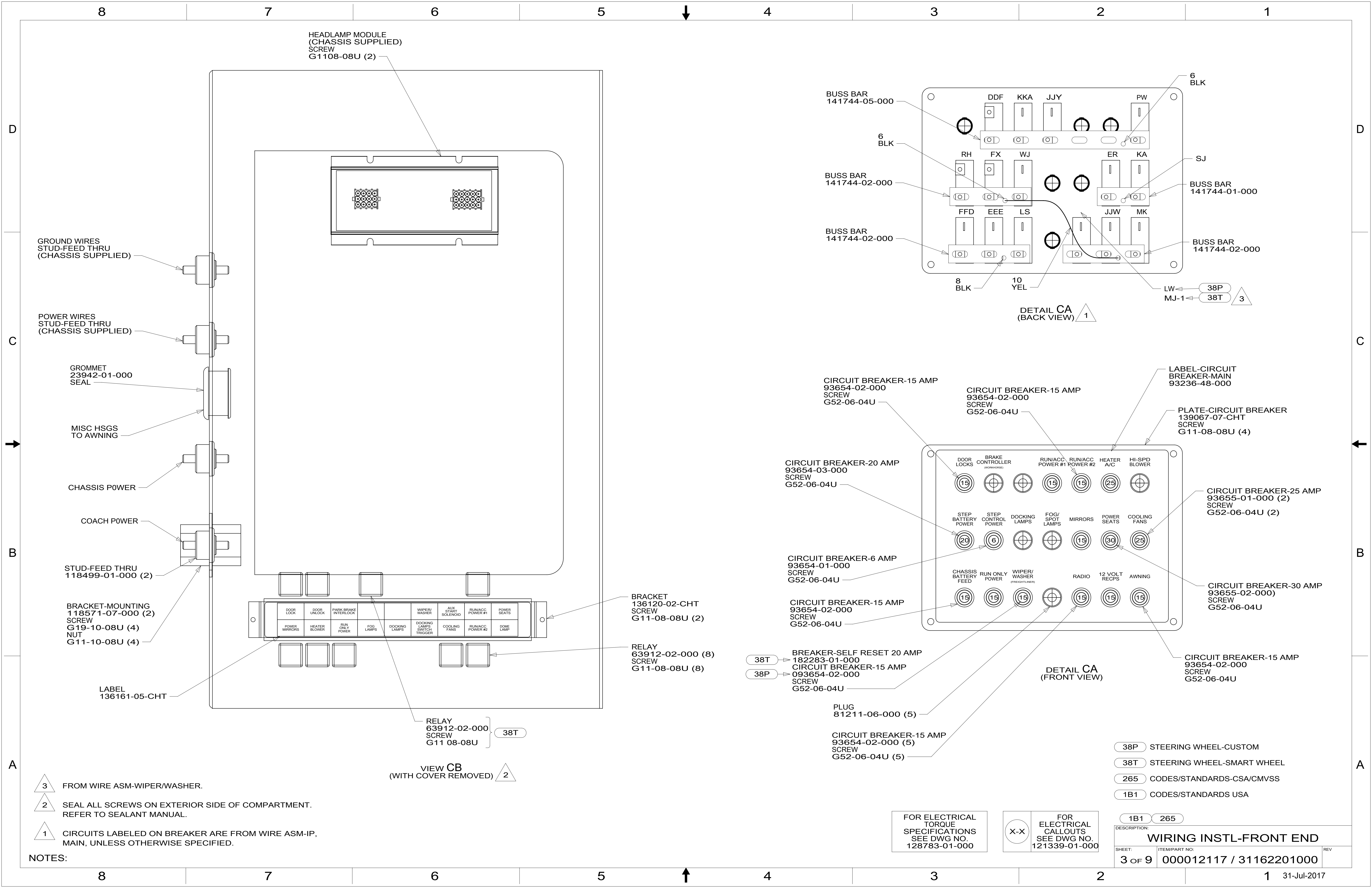
2 EDGE OF LABEL TO HANG JUST BELOW BOTTOM OF DASH.

1 ROUTE WIRES UP LEFT A-PILLAR.

FOR ELECTRICAL
 TORQUE
 SPECIFICATIONS
 SEE DWG NO.
 128783-01-000

FOR ELECTRICAL
 CALLOUTS
 SEE DWG NO.
 121339-01-000

DESCRIPTION:		1B1 265
WIRING INSTL-FRONT END		
SHEET:	ITEM/PART NO.:	REV
2 OF 9	000012117 / 31162201000	



HEADLAMP MODULE
(CHASSIS SUPPLIED)
SCREW
G1108-08U (2)

GROUND WIRES
STUD-FEED THRU
(CHASSIS SUPPLIED)

POWER WIRES
STUD-FEED THRU
(CHASSIS SUPPLIED)

GROMMET
23942-01-000
SEAL

MISC HSGS
TO AWNING

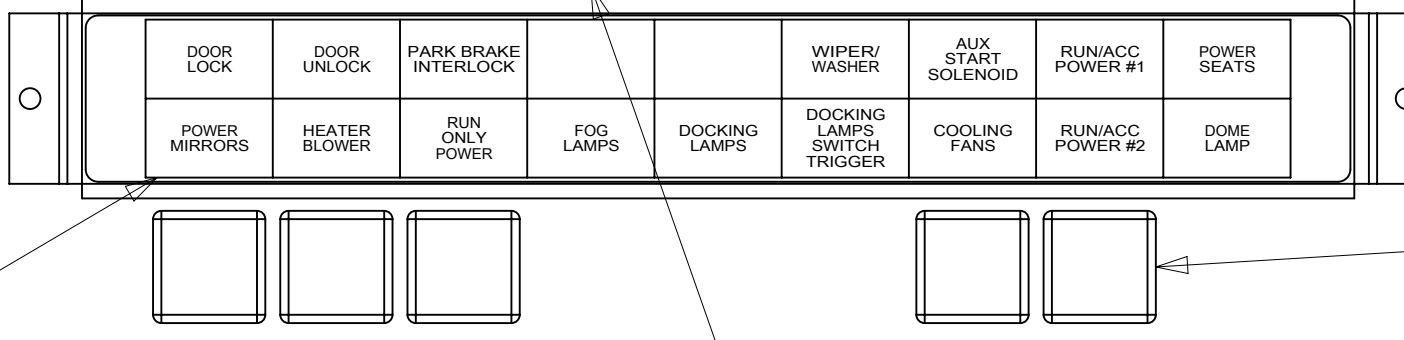
CHASSIS POWER

COACH POWER

STUD-FEED THRU
118499-01-000 (2)

BRACKET-MOUNTING
118571-07-000 (2)
SCREW
G19-10-08U (4)
NUT
G11-10-08U (4)

LABEL
136161-05-CHT



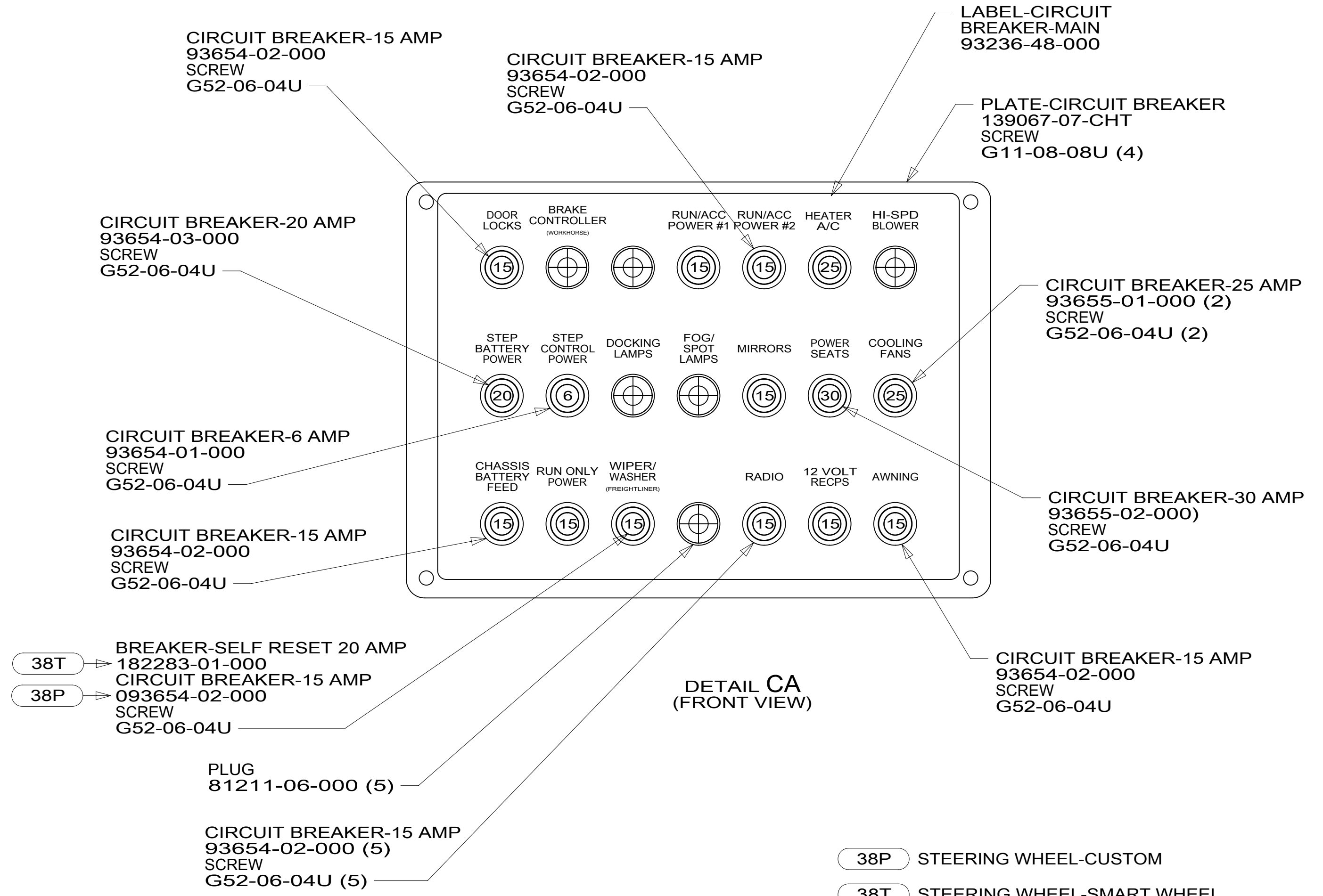
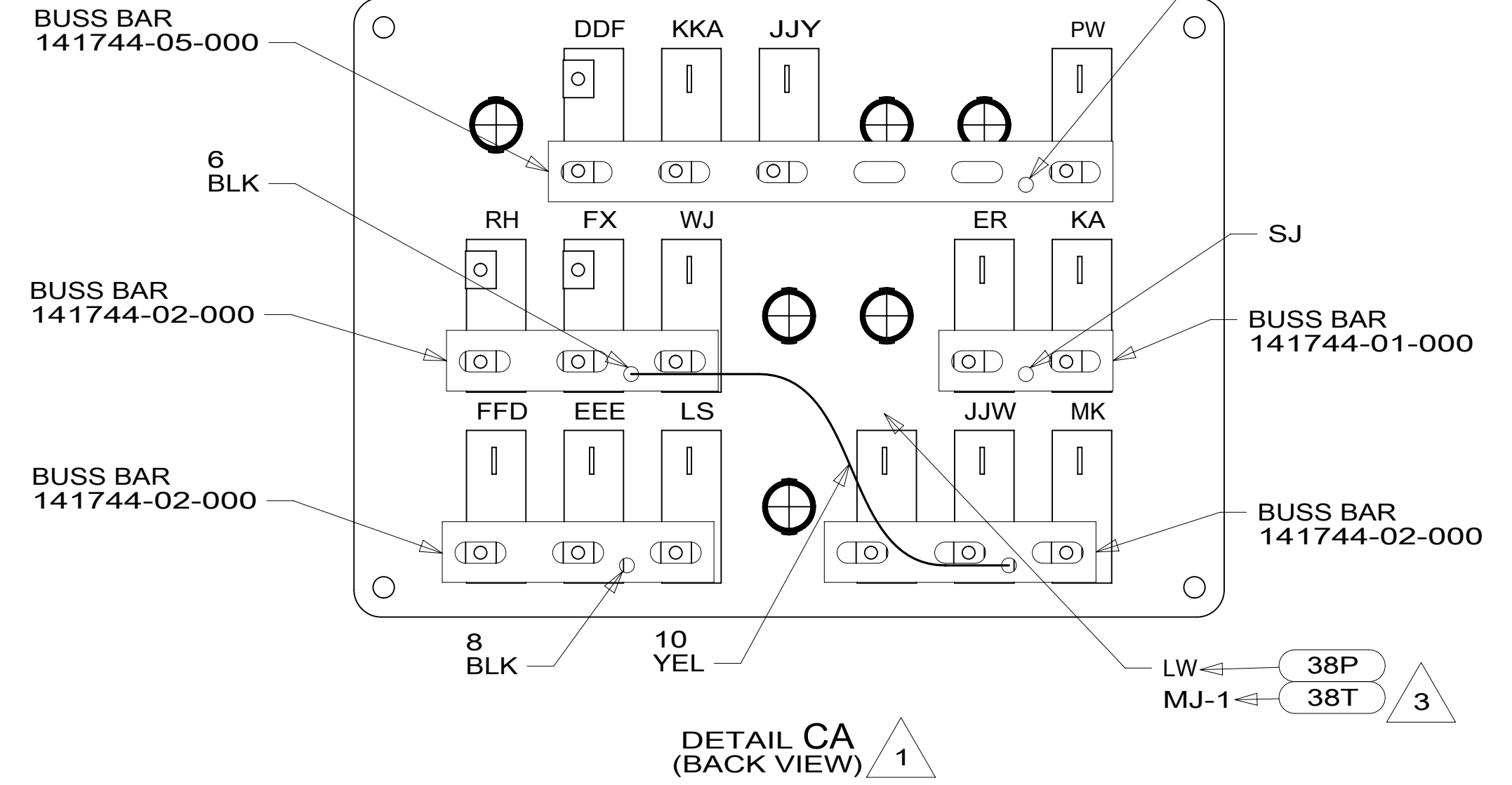
VIEW CB
(WITH COVER REMOVED) 2

BRACKET
136120-02-CHT
SCREW
G11-08-08U (2)

RELAY
63912-02-000 (8)
SCREW
G11-08-08U (8)

RELAY
63912-02-000
SCREW
G11 08-08U } 38T

- NOTES:
- 3 FROM WIRE ASM-WIPER/WASHER.
 - 2 SEAL ALL SCREWS ON EXTERIOR SIDE OF COMPARTMENT. REFER TO SEALANT MANUAL.
 - 1 CIRCUITS LABELED ON BREAKER ARE FROM WIRE ASM-IP, MAIN, UNLESS OTHERWISE SPECIFIED.

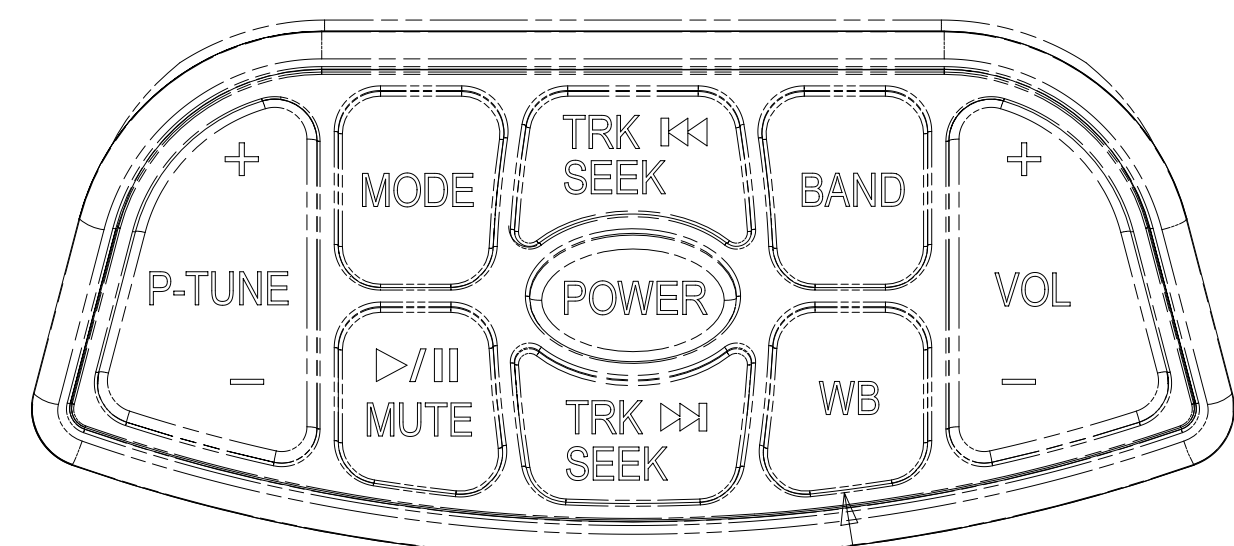


- 38P STEERING WHEEL-CUSTOM
- 38T STEERING WHEEL-SMART WHEEL
- 265 CODES/STANDARDS-CSA/CMVSS
- 1B1 CODES/STANDARDS USA

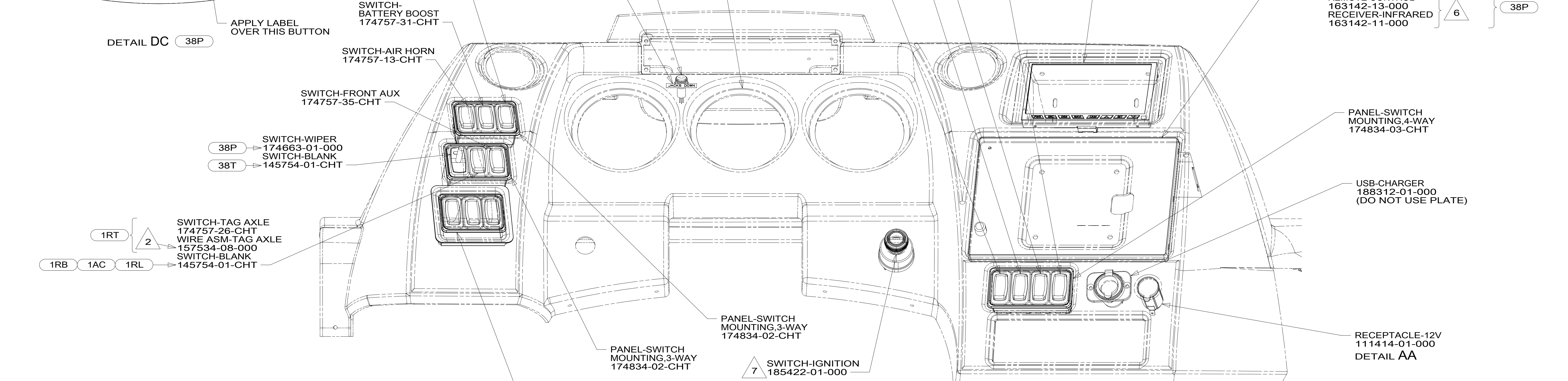
FOR ELECTRICAL TORQUE SPECIFICATIONS SEE DWG NO. 128783-01-000

FOR ELECTRICAL CALLOUTS SEE DWG NO. 121339-01-000

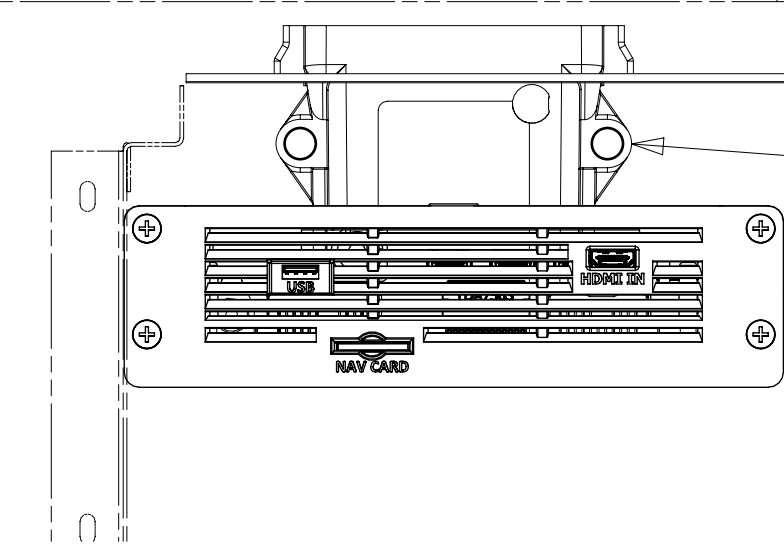
DESCRIPTION:	1B1 265	
WIRING INSTL-FRONT END		
SHEET:	ITEM/PART NO:	REV
3 OF 9	000012117 / 31162201000	



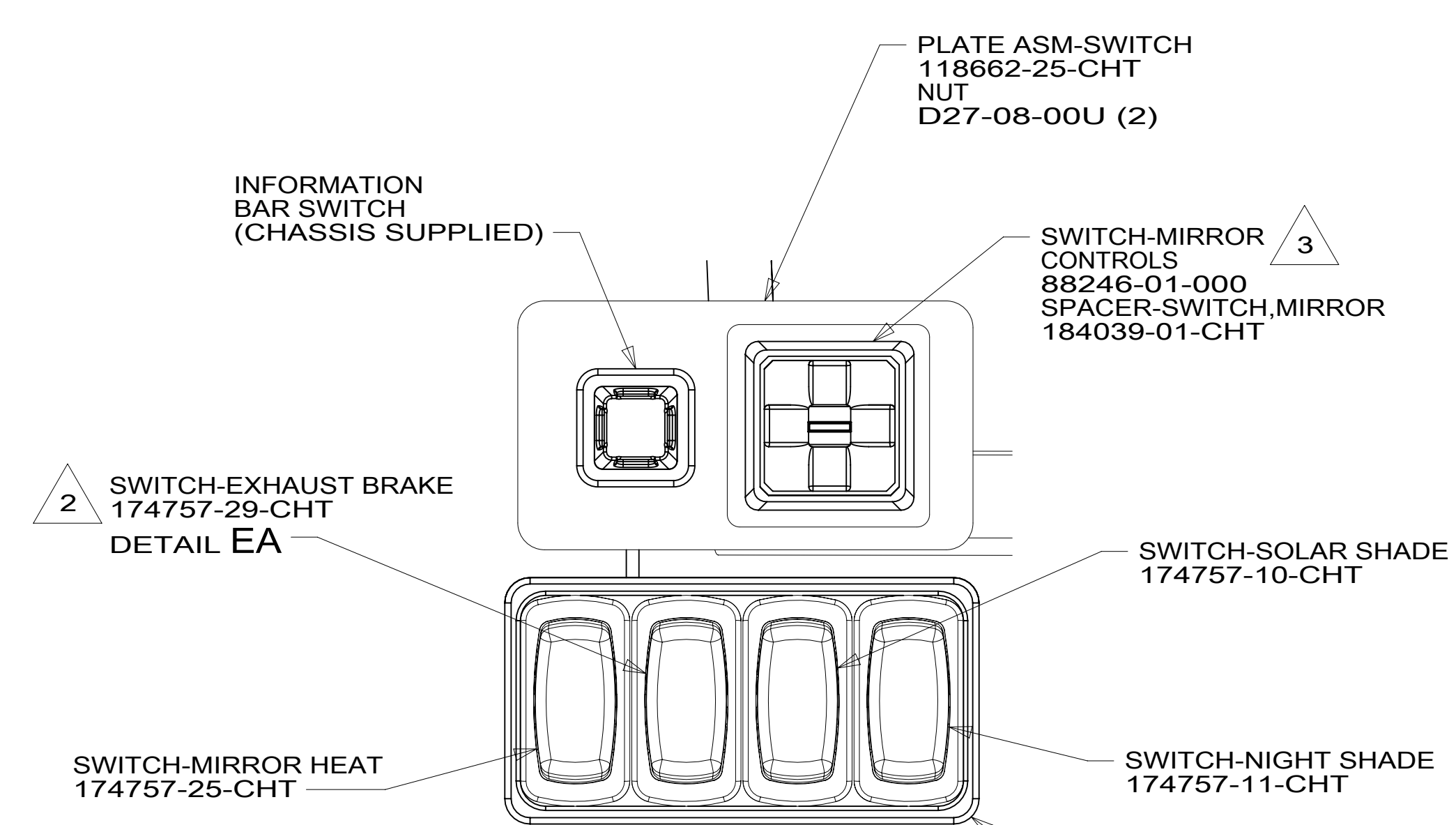
DETAIL DC 38P



DETAIL DA



DETAIL DD



DETAIL DB

- NOTES:
11. APPLY TAPE 8363-01-000 AS NECESSARY TO SECURE NON-LOCKING CONNECTIONS.
 10. MOUNT GPS ANTENNA ON TOP OF DEFROST PLENUM.
 9. APPLY LABEL OVER "WB" BUTTON. SEE DETAIL DC.
 8. ROUTE TEMP SENSOR THRU HOLE IN BULKHEAD TO BRACKET (SEE SHEET 6).
 7. REMOVE AND REPLACE CHASSIS SUPPLIED IGNITION SWITCH.
 6. INSTALL PER DRAWING 170205.
 5. CHASSIS SUPPLIED ROCKER SWITCHES. DOME LAMP SWITCH NOT USED. SEE DETAIL DD FOR SWITCH POSITION.
 4. SEE SHEET 5 FOR GAUGE PLACEMENT.
 3. MOUNT SWITCH SO WHEN ACTUATOR IS PUSHED LEFT, THE LETTER L IS SHOWING.
 2. CONNECT TO MATING LABELED CONNECTOR ON CHASSIS SUPPLIED WIRING.
 1. CONNECT POSITIVE WIRE TO TERMINAL MARKED WITH RED, YEL-WINNEBAGO WIRING RED-HWH WIRING

- MONITOR-LCD (SUPPLIED WITH RADIO)
MOUNT-MONITOR 183210-01-CHT
SCREW G11-10-10U (4)
WASHER E13-10-00U (4)
- RADIO-INFOTAINMENT, 10.4" DM
000028512 / 316216-01-000
SENSOR-TEMPERATURE 176654-13-000
REMOTE-NAVIGATION/RADIO 176654-04-000
LABEL 176654-06-CHT
- REMOTE CONTROL 163142-13-000
RECEIVER-INFRARED 163142-11-000

- PANEL-SWITCH MOUNTING, 4-WAY 174834-03-CHT
- USB-CHARGER 188312-01-000 (DO NOT USE PLATE)
- RECEPTACLE-12V 111414-01-000
DETAIL AA

- MODULE-TPMS 000028270 / 316211-01-000
SCREW 000G11-12-20U (2)
CABLE ASM-TPMS MODULE 000029306 / 316431-01-000
- RADIO CORE UNIT (SUPPLIED WITH RADIO)

- 38M TIRE MONITORING SYSTEM
- 38T STEERING WHEEL-SMART WHEEL
- 1RL FRTL 38,320 400 8.9L 6 SPD
- 1RT FRTL 44,320 450 8.9L 6 SPD
- 1RB FRTL 38,320 380 8.9L 6 SPD
- 1AC FRTL 32,350 360HP 6.7L 6 SPD
- 38P STEERING WHEEL-CUSTOM
- 157 INFOTAIN CTR/GPS SIRIUSXM
- 265 CODES/STANDARDS-CSA/CMVSS
- 1B1 CODES/STANDARDS USA

FOR ELECTRICAL TORQUE SPECIFICATIONS SEE DWG NO. 128783-01-000

FOR ELECTRICAL CALLOUTS SEE DWG NO. 121339-01-000

DESCRIPTION:	1B1 265	
WIRING INSTL-FRONT END		
SHEET:	ITEM/PART NO.:	REV
4 OF 9	000012117 / 31162201000	

8

7

6

5



4

3

2

1

D

D

C

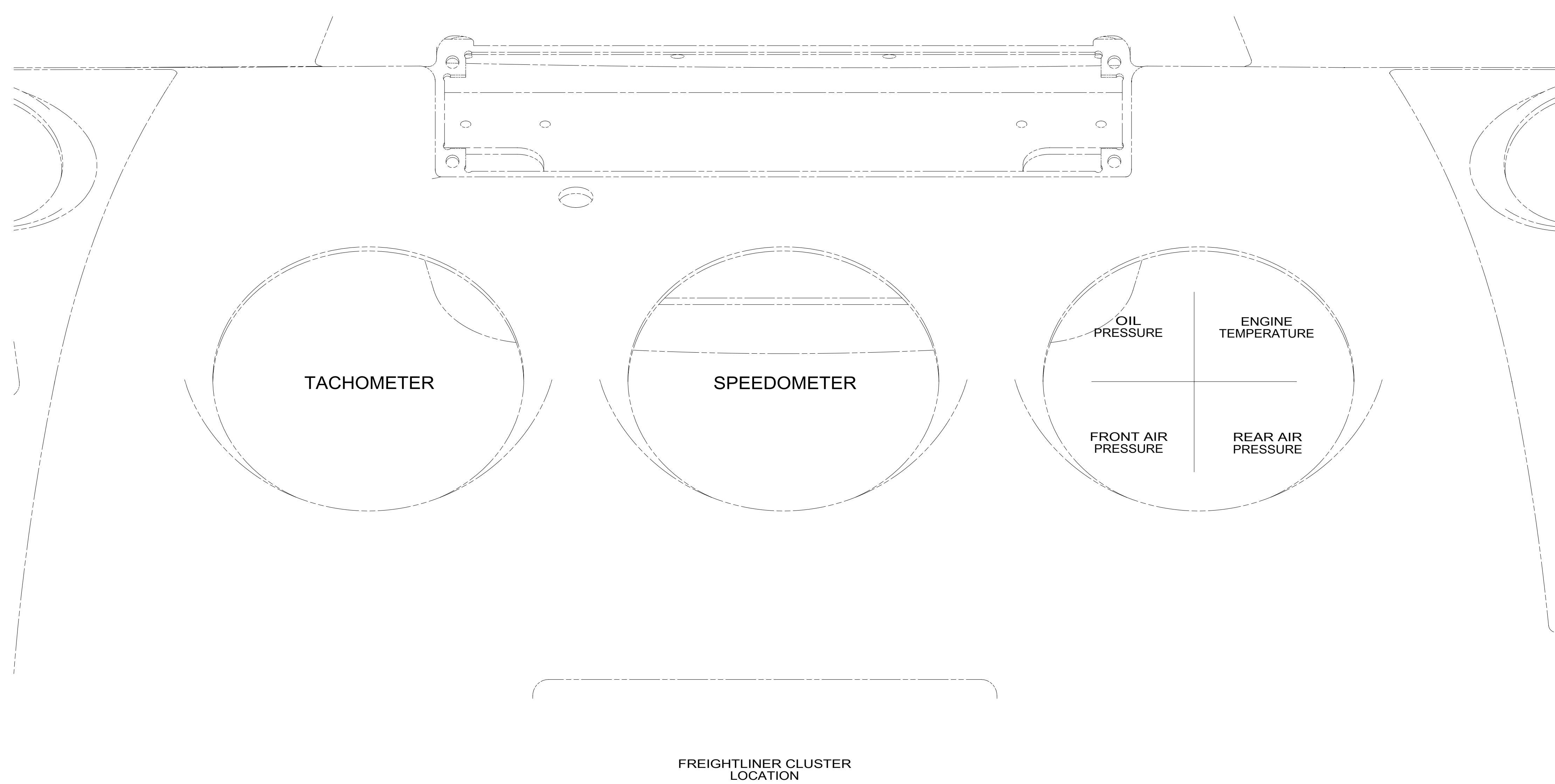
C

B

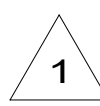
B

A

A



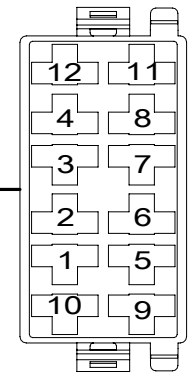
WIRE ASM-EXHAUST BRAKE SWITCH
000026468 / 315655-01-000



CONNECTS TO
CHASSIS WIRING



DETAIL EA



FOR ELECTRICAL
TORQUE
SPECIFICATIONS
SEE DWG NO.
128783-01-000

FOR
ELECTRICAL
CALLOUTS
SEE DWG NO.
121339-01-000

265 CODES/STANDARDS-CSA/CMVSS

1B1 CODES/STANDARDS USA

1B1 265

DESCRIPTION:
WIRING INSTL-FRONT END

SHEET: 5 OF 9 ITEM/PART NO: 000012117 / 31162201000 REV

NOTES:
1 CHASSIS WIRING HAS MATING CONNECTOR
AND IS LABELED "ENGINE BRAKE SWITCH"

8

7

6

5



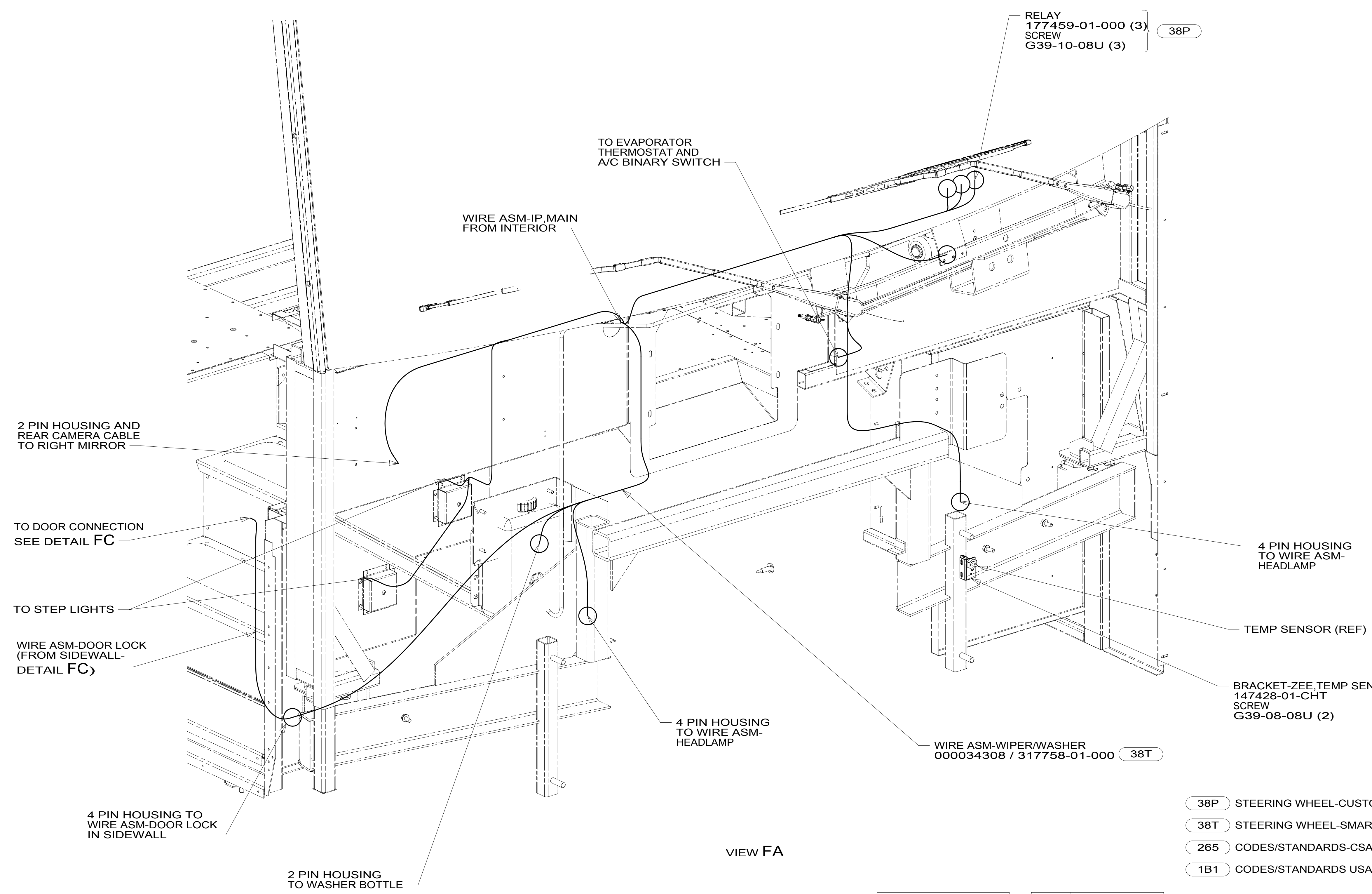
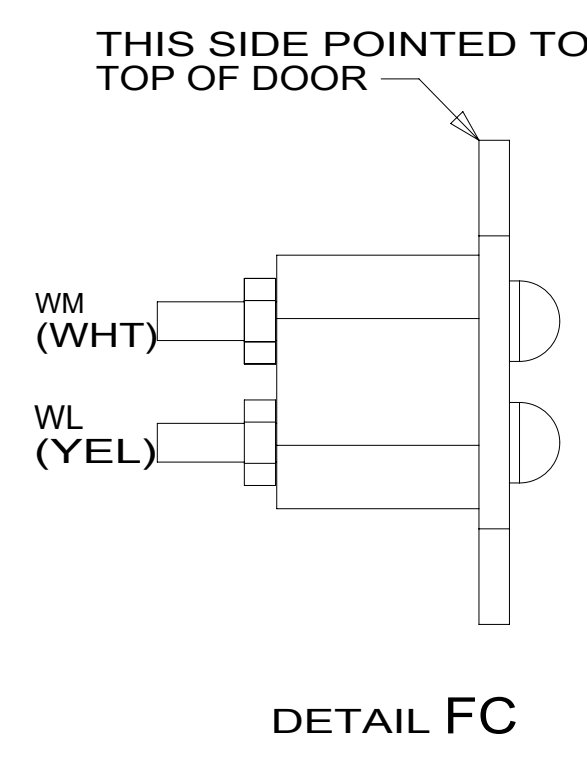
4

3

2

1

31-Jul-2017



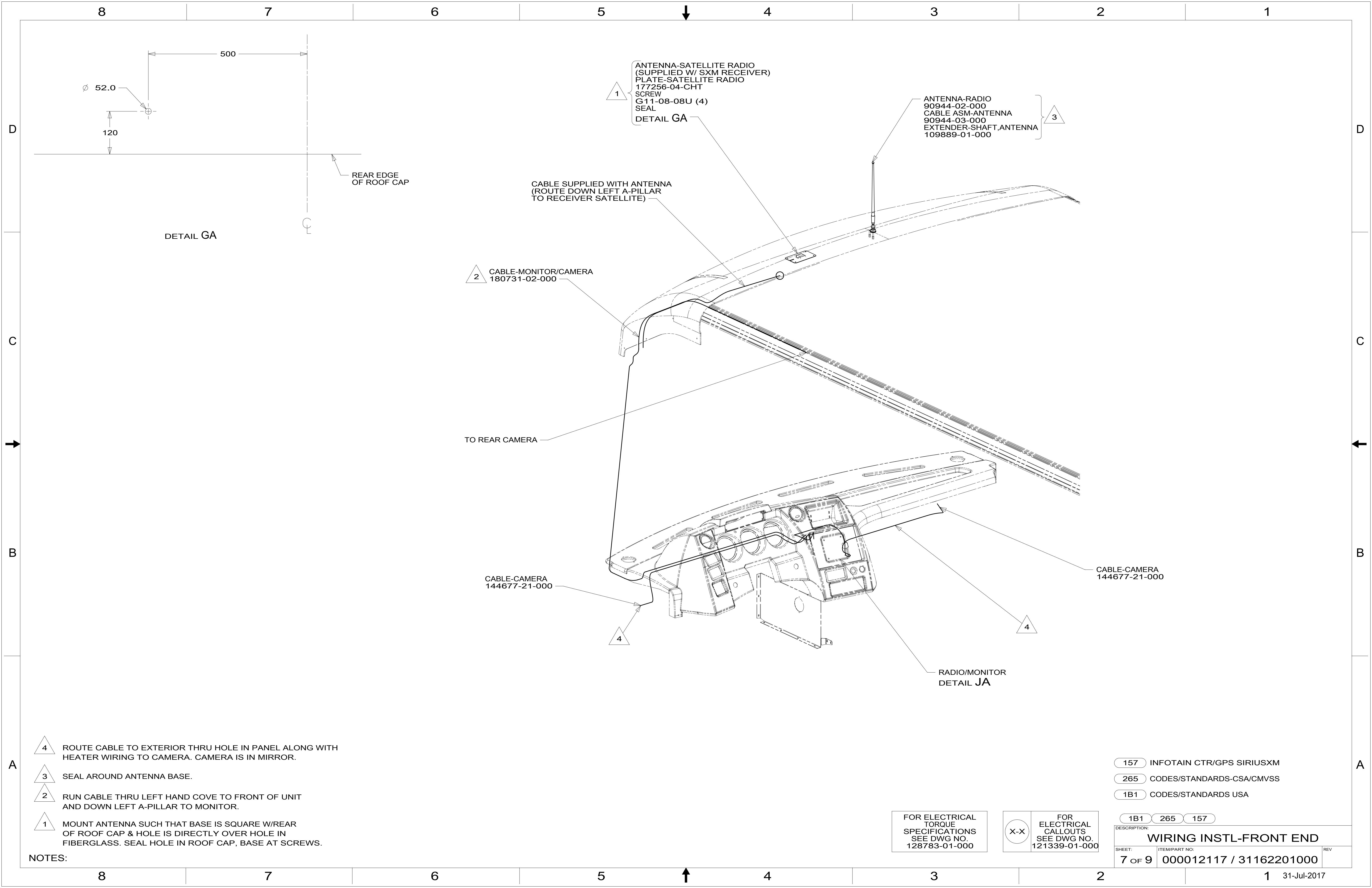
VIEW FA

FOR ELECTRICAL TORQUE SPECIFICATIONS SEE DWG NO. 128783-01-000

FOR ELECTRICAL CALLOUTS SEE DWG NO. 121339-01-000

- 38P STEERING WHEEL-CUSTOM
- 38T STEERING WHEEL-SMART WHEEL
- 265 CODES/STANDARDS-CSA/CMVSS
- 1B1 CODES/STANDARDS USA

DESCRIPTION: WIRING INSTL-FRONT END		
SHEET: 6 OF 9	ITEM/PART NO: 000012117 / 31162201000	REV
1B1 265		
		31-Jul-2017



1 ANTENNA-SATELLITE RADIO
(SUPPLIED W/ SXM RECEIVER)
PLATE-SATELLITE RADIO
177256-04-CHT
SCREW
G11-08-08U (4)
SEAL
DETAIL GA

3 ANTENNA-RADIO
90944-02-000
CABLE ASM-ANTENNA
90944-03-000
EXTENDER-SHAFT,ANTENNA
109889-01-000

2 CABLE-MONITOR/CAMERA
180731-02-000

CABLE-CAMERA
144677-21-000

CABLE-CAMERA
144677-21-000

RADIO/MONITOR
DETAIL JA

DETAIL GA

REAR EDGE
OF ROOF CAP

CABLE SUPPLIED WITH ANTENNA
(ROUTE DOWN LEFT A-PILLAR
TO RECEIVER SATELLITE)

TO REAR CAMERA

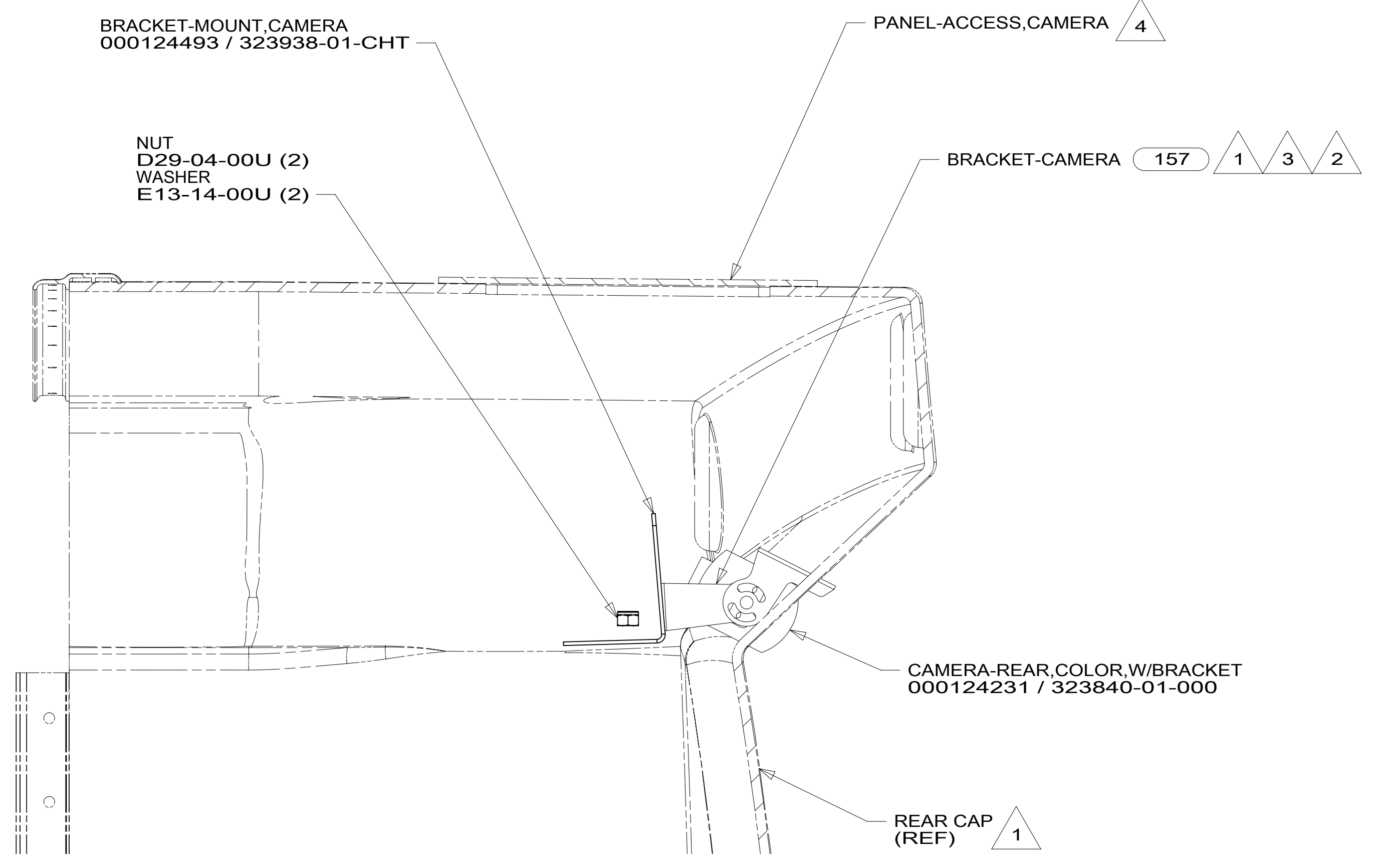
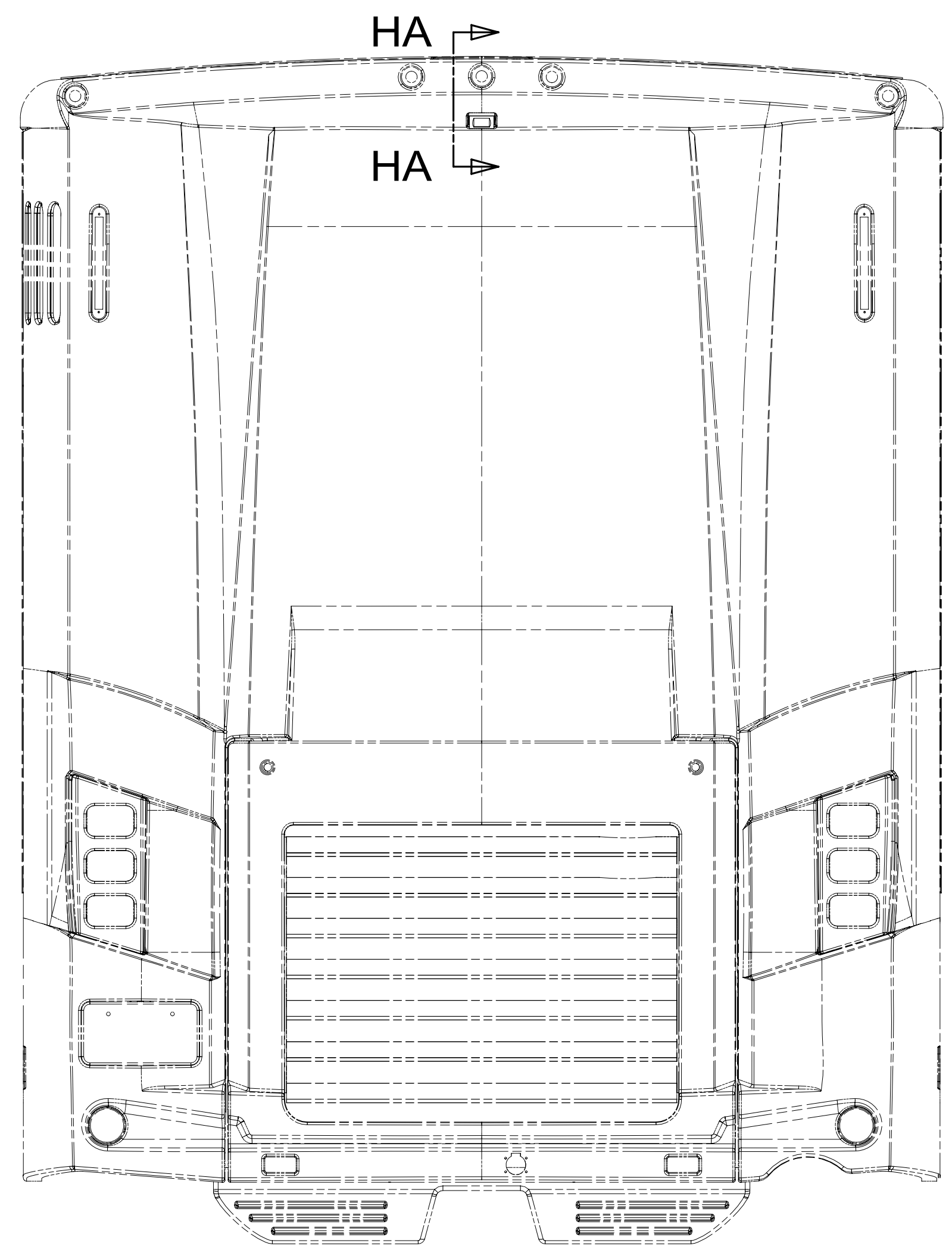
- NOTES:
- 4 ROUTE CABLE TO EXTERIOR THRU HOLE IN PANEL ALONG WITH HEATER WIRING TO CAMERA. CAMERA IS IN MIRROR.
 - 3 SEAL AROUND ANTENNA BASE.
 - 2 RUN CABLE THRU LEFT HAND COVE TO FRONT OF UNIT AND DOWN LEFT A-PILLAR TO MONITOR.
 - 1 MOUNT ANTENNA SUCH THAT BASE IS SQUARE W/REAR OF ROOF CAP & HOLE IS DIRECTLY OVER HOLE IN FIBERGLASS. SEAL HOLE IN ROOF CAP, BASE AT SCREWS.

- 157 INFOTAIN CTR/GPS SIRIUSXM
- 265 CODES/STANDARDS-CSA/CMVSS
- 1B1 CODES/STANDARDS USA

FOR ELECTRICAL
TORQUE
SPECIFICATIONS
SEE DWG NO.
128783-01-000

FOR ELECTRICAL
CALLOUTS
SEE DWG NO.
121339-01-000

DESCRIPTION: WIRING INSTL-FRONT END		
SHEET: 7 OF 9	ITEM/PART NO: 000012117 / 31162201000	REV
1B1 265 157		
31-Jul-2017		



SECTION HA-HA

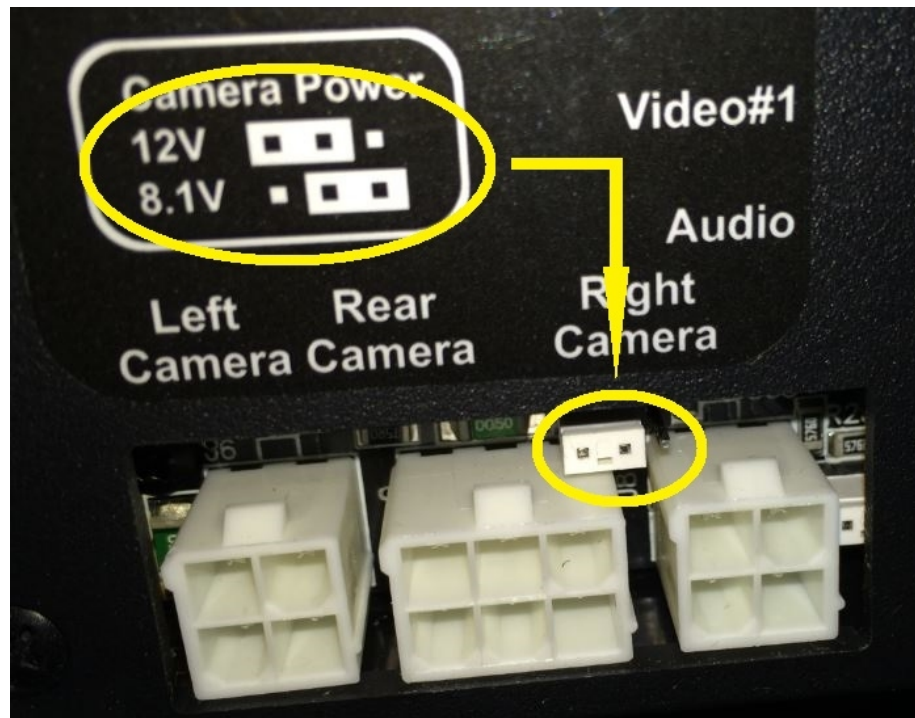
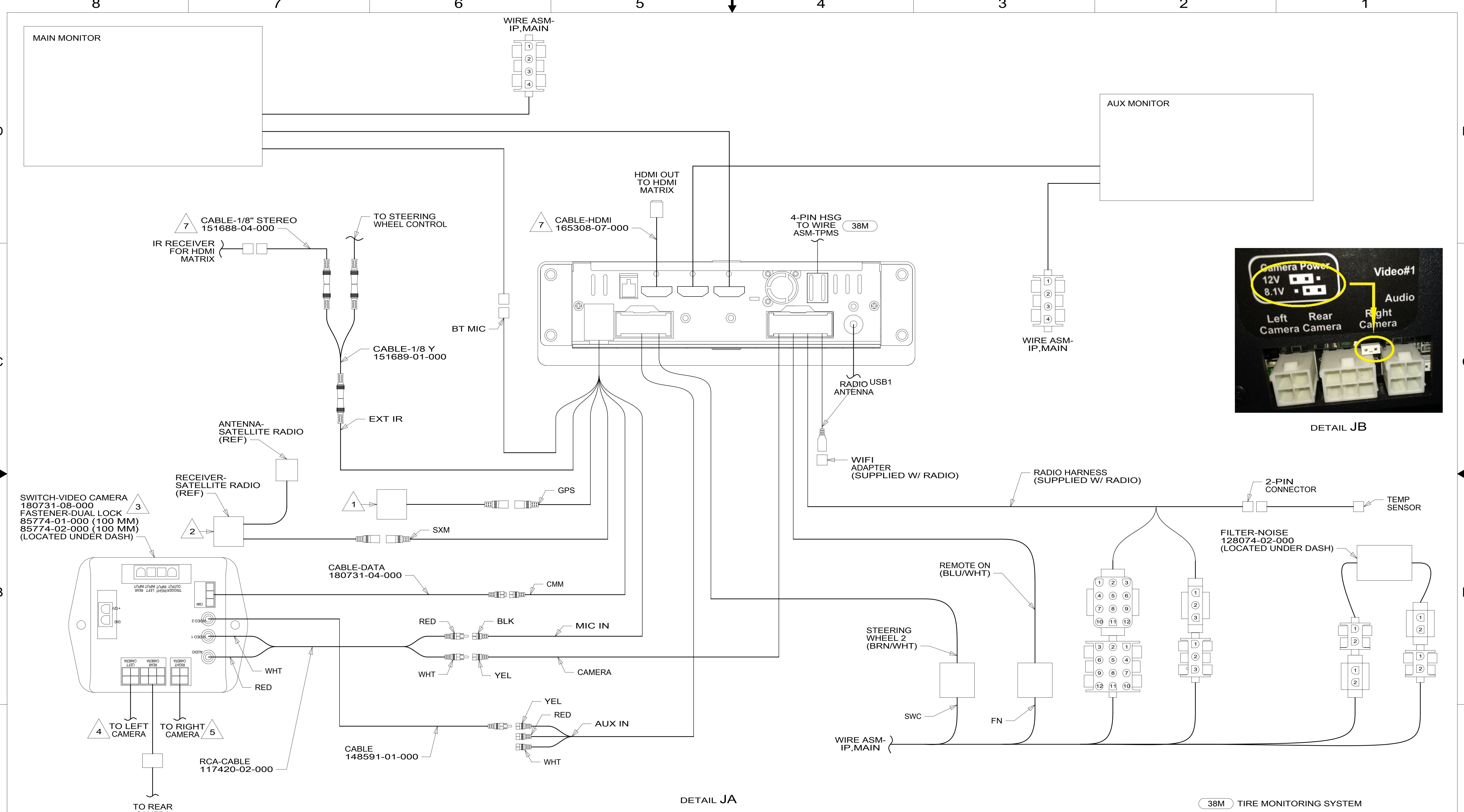
- NOTES:
- 4 SEE PANEL-REAR CAP FOR LOCATION.
 - 3 ALIGN CAMERA IN CENTER OF OPENING AND ADJUST CAMERA VIEWING SO BACKWALL IS JUST VISIBLE IN MONITOR.
 - 2 APPLY TAPE 180131-01-CHT TO SEAL CAMERA CONNECTOR, THEN COVER WITH TAPE 8363-01-000 WITH 15D
 - 1 PARTS SUPPLIED WITH REAR CAMERA

- 157 INFOTAIN CTR/GPS SIRIUSXM
- 265 CODES/STANDARDS-CSA/CMVSS
- 1B1 CODES/STANDARDS USA

FOR ELECTRICAL TORQUE SPECIFICATIONS SEE DWG NO. 128783-01-000

FOR ELECTRICAL CALLOUTS SEE DWG NO. 121339-01-000

DESCRIPTION:	
WIRING INSTL-FRONT END	
SHEET:	ITEM/PART NO. REV
8 OF 9	000012117 / 31162201000



DETAIL JB

DETAIL JA

- NOTES:
- 3 ENSURE CAMERA POWER JUMPER IS IN 12 VOLT POSITION. MOVE TO 12 VOLT POSITION IF NECESSARY. SEE DEAL HB.
 - 2 WIRE TIE RECEIVER-SATELLITE RADIO AND SWITCH-VIDEO CAMERA TO DASH RADIO WIRING BEHIND THE RADIO.
 - 1 MOUNT TO DEFROST PLENUM NEAR WINDSHIELD.

- 7 ROUTE UP RIGHT A-POST.
- 6 APPLY TAPE 8363-01-000 AS NECESSARY TO SECURE NON-LOCKING CONNECTIONS.
- 5 MARK LEFT CABLE WITH WHITE TAPE 900000-08-000 NEXT TO CONNECTOR.
- 4 MARK LEFT CABLE WITH YELLOW TAPE 900000-07-000 NEXT TO CONNECTOR.

- 38M TIRE MONITORING SYSTEM
- 157 INFOTAIN CTR/GPS SIRIUSXM
- 265 CODES/STANDARDS-CSA/CMVSS
- 1B1 CODES/STANDARDS USA

FOR ELECTRICAL TORQUE SPECIFICATIONS SEE DWG NO. 128783-01-000

FOR ELECTRICAL CALLOUTS SEE DWG NO. 121339-01-000

DESCRIPTION:		
WIRING INSTL-FRONT END		
SHEET:	ITEM/PART NO.:	REV
9 OF 9	000012117 / 31162201000	