

8

7

6

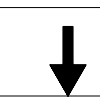
5

4

3

2

1



	R42HL	ITEM
CABLE ASM (YEL) FROM COACH BATTERY FUSE TO STUD-JUMP START,RED	175207-52-078	1
CABLE ASM (YEL) FROM STUD-JUMP START,RED TO COACH SIDE OF AUX START SOLENOID	175207-52-003	2
CABLE ASM (ORG) FROM COACH BATTERY TO INVERTER FUSE	175207-66-005	3
CABLE ASM (BLK) FROM STUD-JUMP START,BLK TO FRAME RAIL GROUND	175211-01-009	4
CABLE ASM (ORG) FROM INVERTER FUSE TO INVERTER DISCONNECT	175207-67-024	5
CABLE ASM (ORG) FROM INVERTER DISCONNECT TO INVERTER	175207-65-004	17
CABLE ASM (BLK) FROM BATTERY TO INVERTER	175211-01-028	6
CABLE ASM (BLK) FROM COACH BATTERY TO FRAME RAIL GROUND	175211-02-072	7
CABLE ASM (PUR) FROM DISCONNECT SOLENOID TO CHASSIS FUSE PANEL	175207-15-010	8
CABLE ASM (PUR) FROM BATTERY SIDE OF DISCONNECT SOLENOID TO CHASSIS BATTERY FUSE	175207-35-007	9
CABLE ASM (BLU) FROM CHASSIS DISCONNECTED POWER FUSE TO LEVELING SYSTEM POWER	141416-26-120	10
CABLE ASM (BLK) FROM LEVELING SYSTEM TO FRAME RAIL GROUND	133567-11-004	1
CABLE ASM (GRN) FROM BAT DISC RELAY TO PASS THRU STUD	175207-42-143	11
CABLE ASM (GRN) FROM PASS THRU STUD TO GENERATOR	175207-42-031	22
CABLE ASM (BLK) FROM GENERATOR TO FRAME RAIL GROUND	175211-02-022	23
CABLE ASM (YEL) JUMPER BETWEEN POSITIVE POSTS ON COACH BATTERY	141417-52-004	12
	141417-51-002 (4)	13
CABLE ASM (BLK) JUMPER BETWEEN NEGATIVE POSTS ON COACH BATTERY	133568-12-004	14
	133568-11-002 (4)	15
CABLE ASM (RED) JUMPER BETWEEN POSITIVE POSTS IN LEFT FRONT COMPT	141417-32-002	2
CABLE ASM-TEMPERATURE,BATTERY	175385-03-000	16
CABLE ASM (YEL) FROM BATTERY TO BATTERY FUSE	175207-52-007	18
CABLE ASM (PUR) FROM BATTERY TO BATTERY FUSE	CHASSIS SUPPLIED	19
CABLE ASM (YEL) FROM COACH DISCONNECT TO MULTIPLEX BREAKER	141415-57-004	20
CABLE ASM (PUR) FROM CHASSIS DISCONNECT TO MULTIPLEX BREAKER	141415-17-006	21
CABLE ASM (FROM COACH BREAKER TO MULTIPLEX PANEL)	189044-01-062	24
CABLE ASM (FROM CHASSIS BREAKER TO MULTIPLEX PANEL)	189044-02-062	25
CABLE ASM (FROM MULTIPLEX PANEL TO MULTIPLEX PANEL)	189044-01-004	

D

D

C

C

B

B

A

A



- 2 SEE WIRING INSTL-FRONT END FOR ADDITIONAL INFORMATION.
- 1 SEE LEVELING SYSTEM INSTL FOR ADDITIONAL INFORMATION.

NOTES:

265 CODES/STANDARDS-CSA/CMVSS

1B1 CODES/STANDARDS USA

1B1 265

FOR ELECTRICAL TORQUE SPECIFICATIONS SEE DWG NO. 128783-01-000

FOR ELECTRICAL CALLOUTS SEE DWG NO. 121339-01-000

DESCRIPTION: WIRING INSTL-CHASSIS		
SHEET: 2 OF 7	ITEM/PART NO: 000010997 / 31115101000	REV

8

7

6

5

4

3

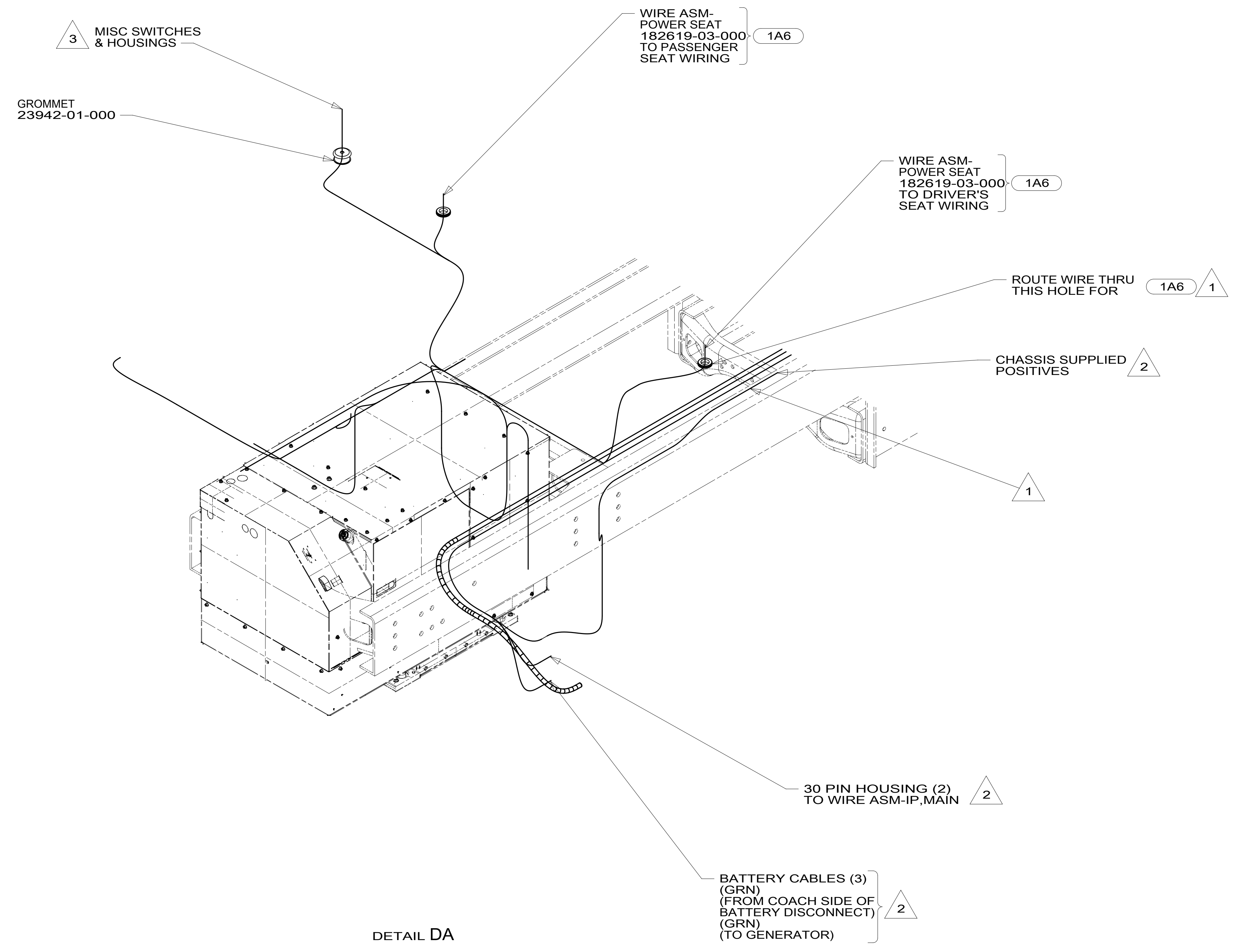
2

1



8 7 6 5 4 3 2 1

D
C
B
A



DETAIL DA

- NOTES:
- 3 SEE WIRE ASM-CHASSIS FOR ADDITIONAL INFORMATION.
 - 2 SEE WIRING INSTL-FRONT END FOR ADDITIONAL INFORMATION.
 - 1 USE PLUG-PLASTIC 61420-12-000 FOR UNUSED HOLE & SEAL.

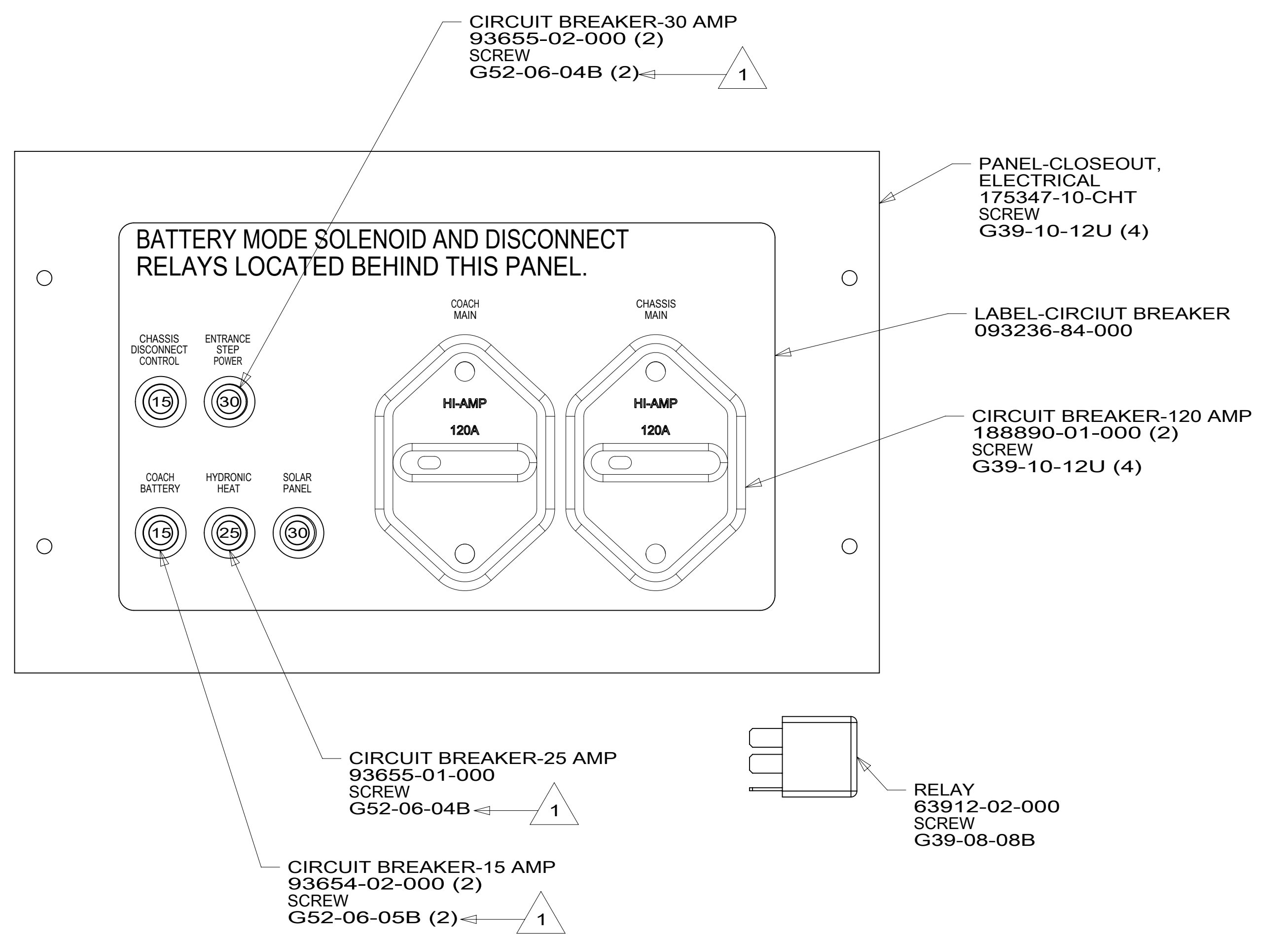
FOR ELECTRICAL TORQUE SPECIFICATIONS SEE DWG NO. 128783-01-000

FOR ELECTRICAL CALLOUTS SEE DWG NO. 121339-01-000

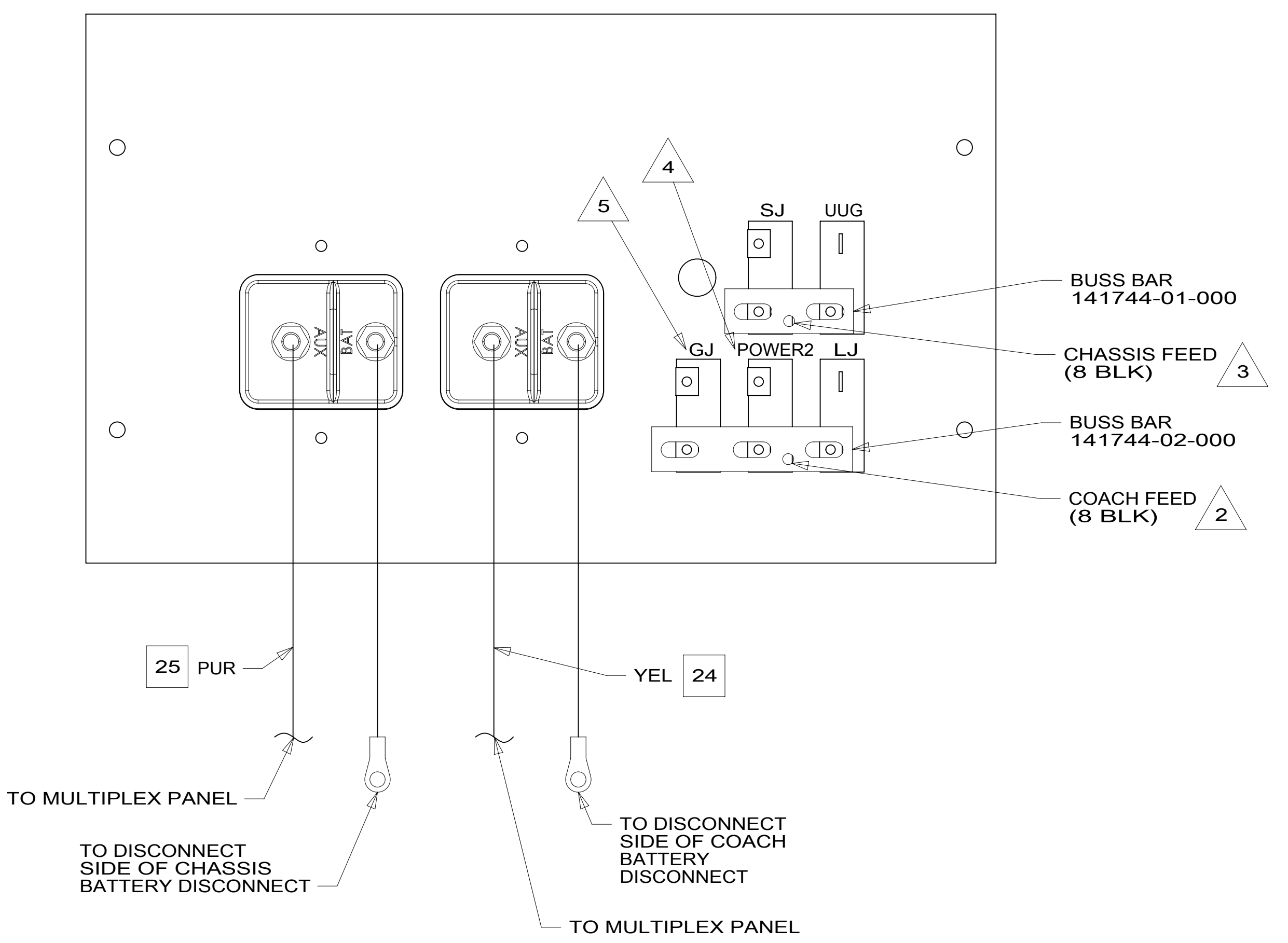
- 1A6 SEATS-DRIVER/PASSENGER
- 265 CODES/STANDARDS-CSA/CMVSS
- 1B1 CODES/STANDARDS USA

DESCRIPTION:		WIRING INSTL-CHASSIS	
SHEET:	ITEM/PART NO.:	REV	
4 OF 7	000010997 / 31115101000		

8 7 6 5 4 3 2 1 06-Dec-2016



DETAIL EA
(FRONT VIEW)



DETAIL EA
(BACK VIEW)

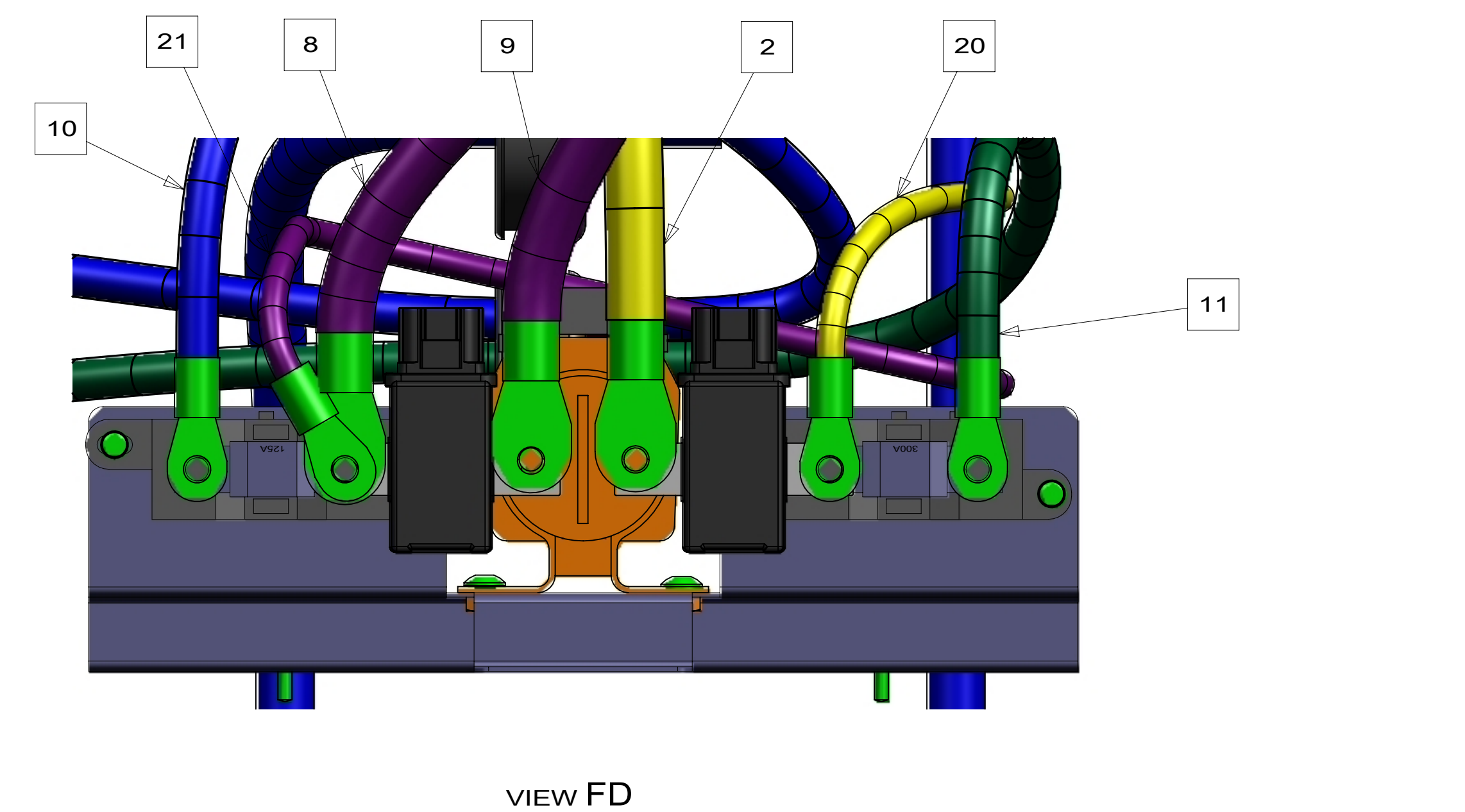
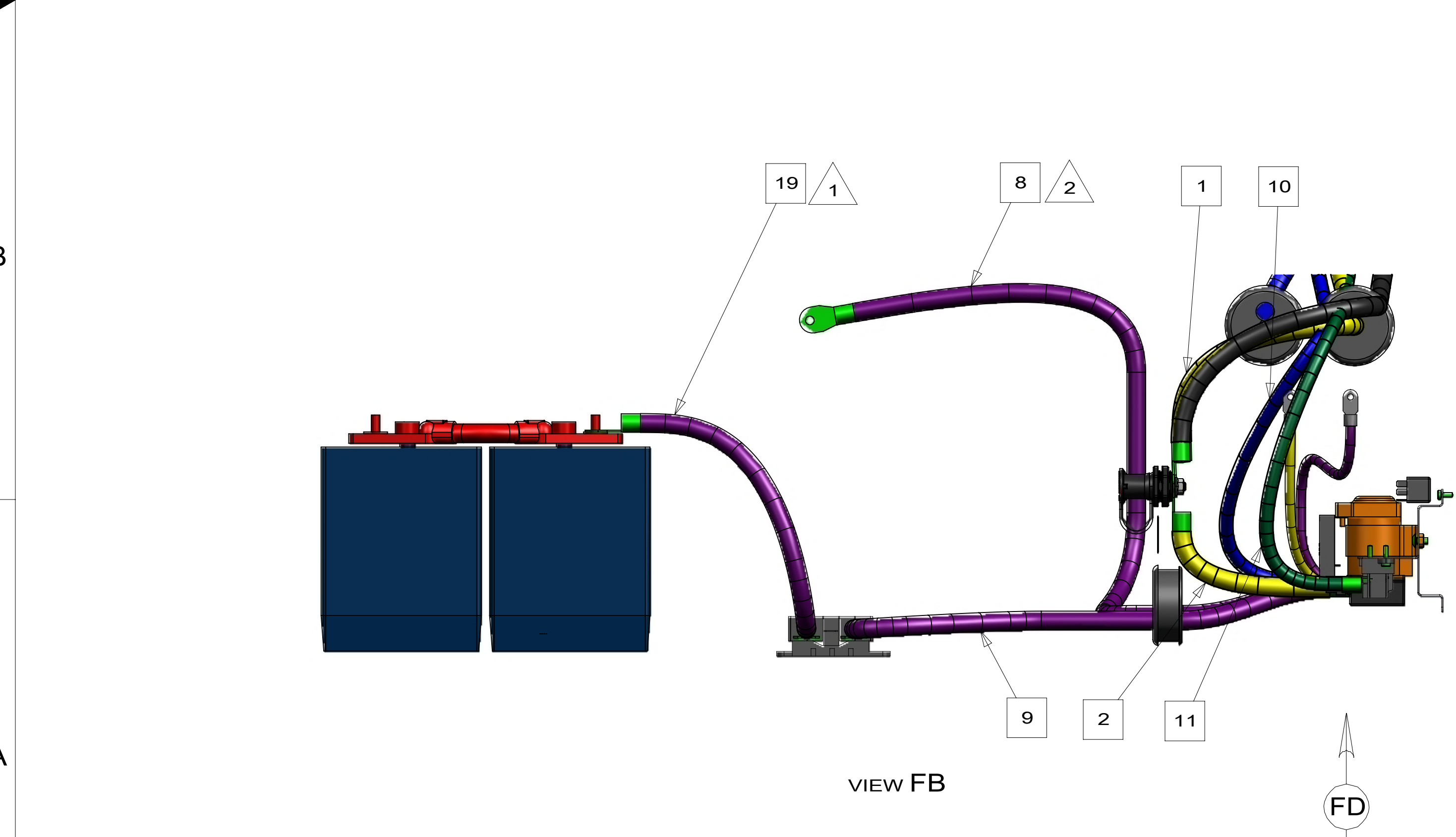
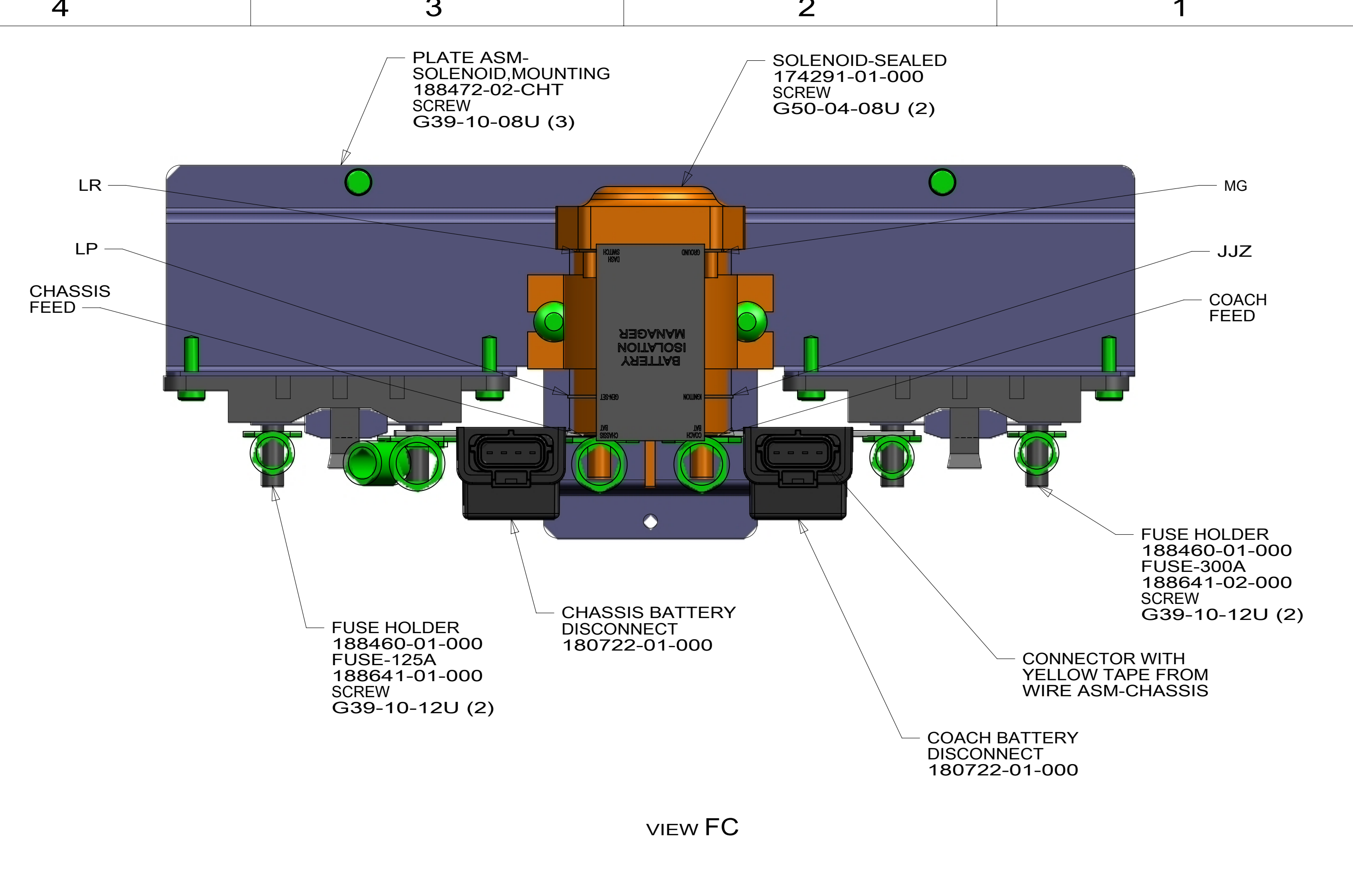
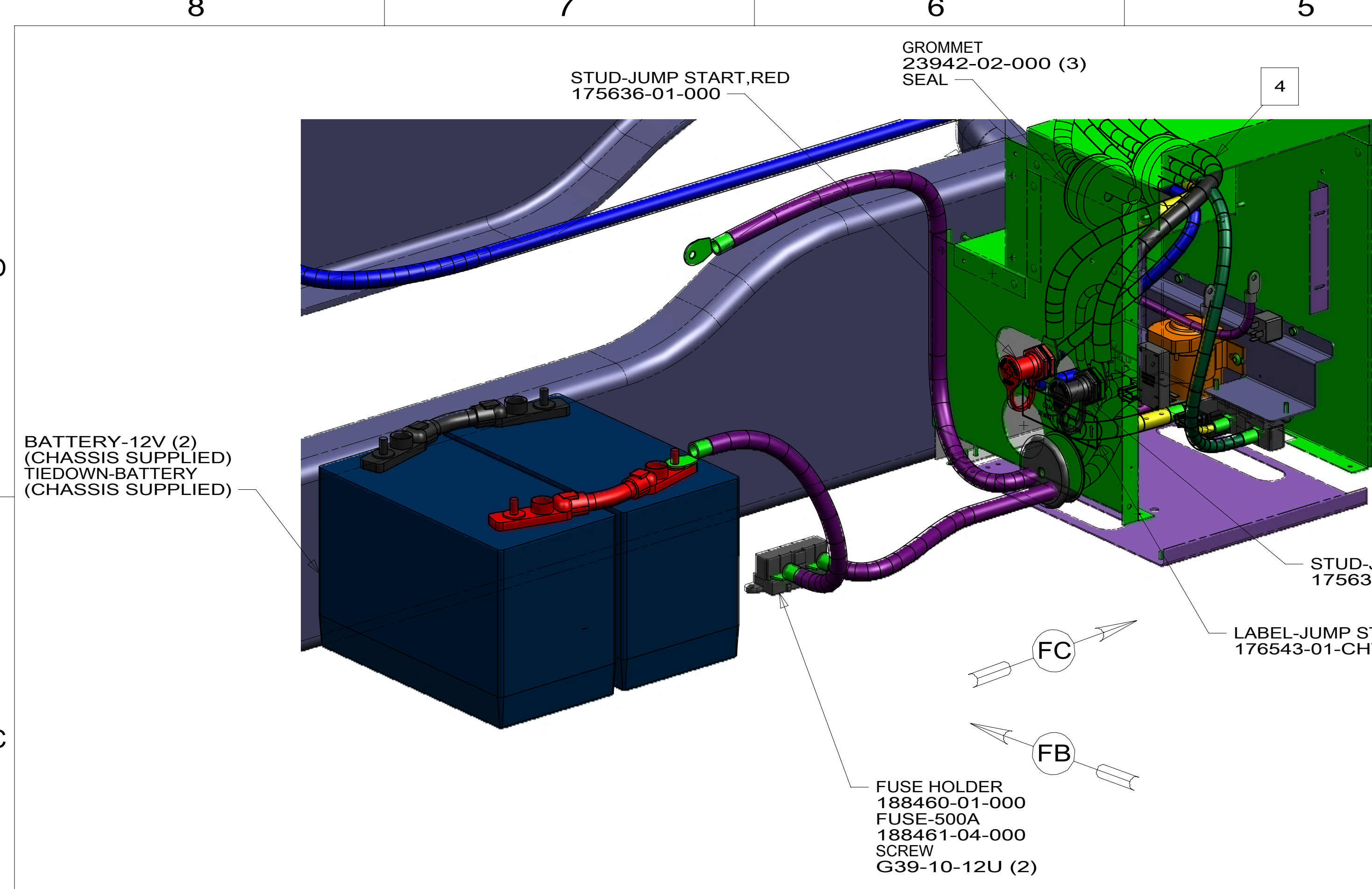
- NOTES:
- 5 MARKED WITH WHITE TAPE.
 - 4 MARKED WITH BLUE TAPE.
 - 3 MARKED WITH GREEN TAPE.
 - 2 MARKED WITH YELLOW TAPE.
 - 1 REPLACE EXISTING SCREW TO PROPERLY ATTACH BREAKER TO BUSS BAR.

FOR ELECTRICAL TORQUE SPECIFICATIONS SEE DWG NO. 128783-01-000

FOR ELECTRICAL CALLOUTS SEE DWG NO. 121339-01-000

265 CODES/STANDARDS-CSA/CMVSS
1B1 CODES/STANDARDS USA

DESCRIPTION: WIRING INSTL-CHASSIS	
SHEET: 5 OF 7	ITEM/PART NO: 000010997 / 31115101000
REV 1 06-Dec-2016	



NOTES:

2 PUR CABLE REPLACES CHASSIS SUPPLIED CABLE.

1 REMOVE CABLE FROM CHASSIS PANEL AND INSTALL AS SHOWN ON FUSE.

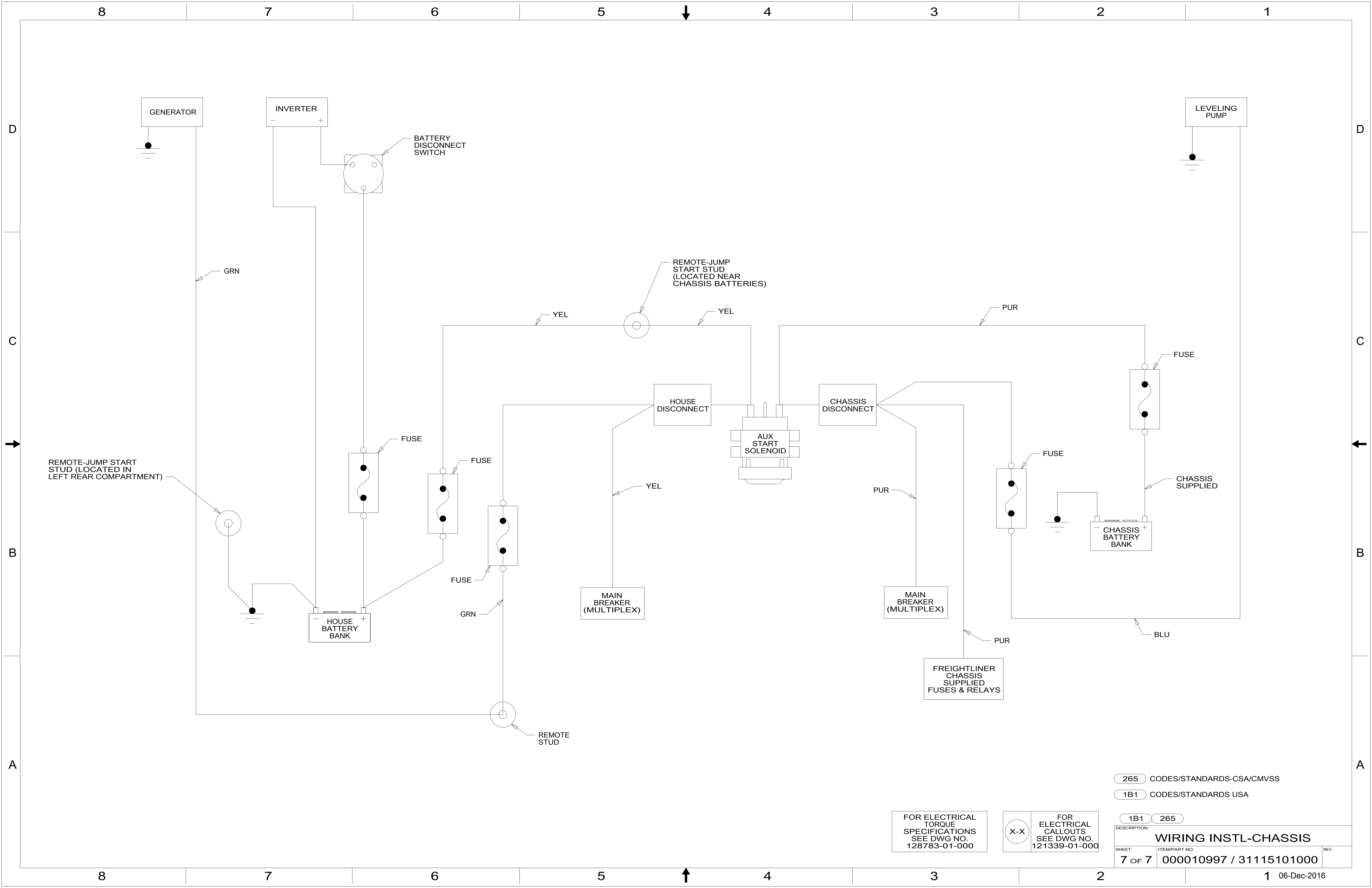
FOR ELECTRICAL TORQUE SPECIFICATIONS SEE DWG NO. 128783-01-000

FOR ELECTRICAL CALLOUTS SEE DWG NO. 121339-01-000

265 CODES/STANDARDS-CSA/CMVSS

1B1 CODES/STANDARDS USA

DESCRIPTION:		1B1	265
WIRING INSTL-CHASSIS			
SHEET:	ITEM/PART NO.:	REV	
6 OF 7	000010997 / 31115101000		



265 CODES/STANDARDS-CSA/CMVSS

1B1 CODES/STANDARDS USA

1B1 265

FOR ELECTRICAL TORQUE SPECIFICATIONS SEE DWG NO. 128783-01-000

FOR ELECTRICAL CALLOUTS SEE DWG NO. 121339-01-000

DESCRIPTION: **WIRING INSTL-CHASSIS**

SHEET: 7 OF 7 ITEM/PART NO: 000010997 / 31115101000 REV

1 06-Dec-2016