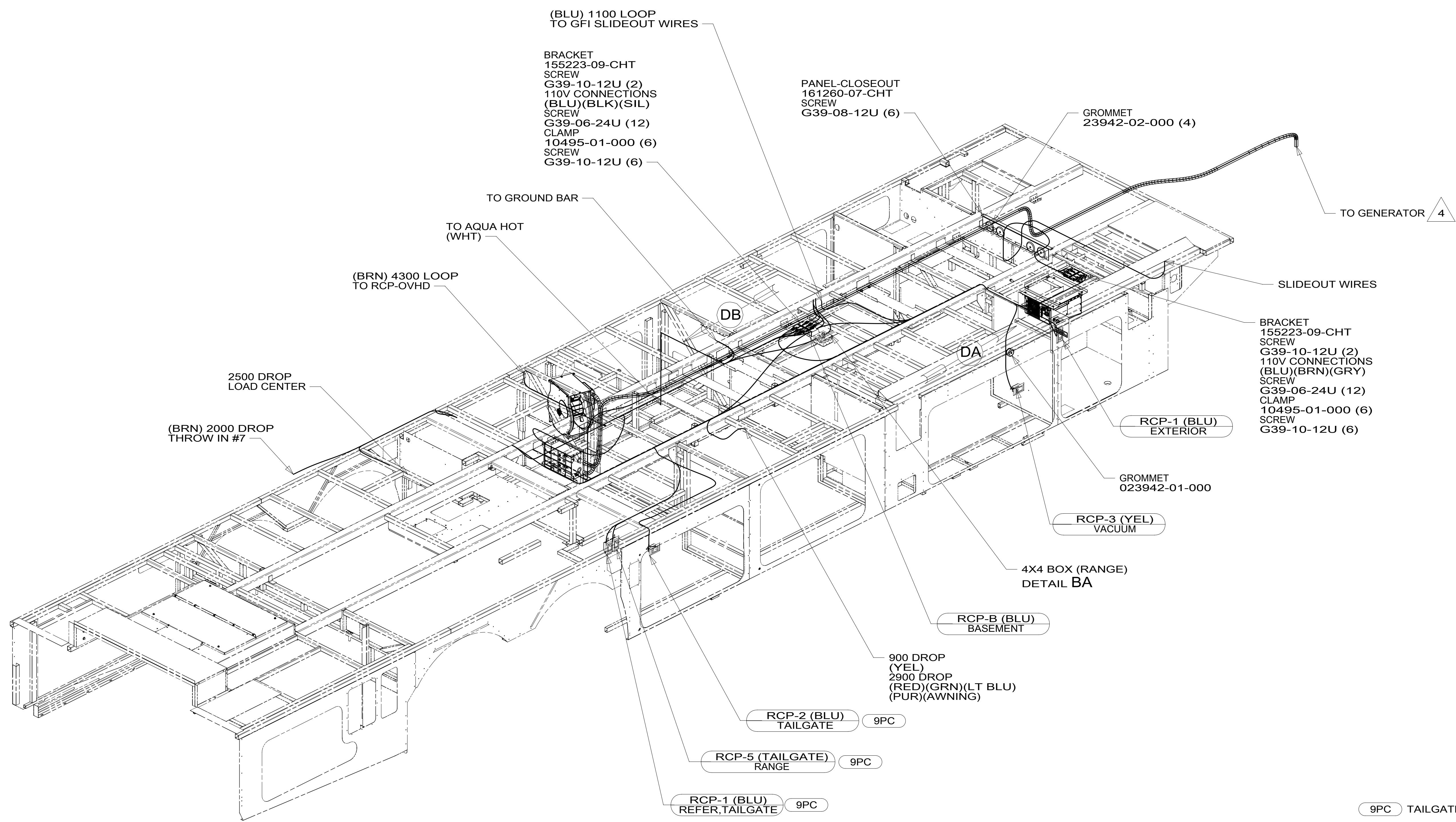


8 7 6 5 4 3 2 1

D  
C  
B  
A



- 4 SEE GENERATOR INSTL FOR ADDITIONAL INFORMATION.
- WIRES THAT REST ON WIRE TRAYS ARE TO BE TIED DOWN WITH WIRE TIE 8343-04-000.
  - CLAMP TO FLOOR SUPPORT TUBES AS NECESSARY WITH CLAMP 10497-01-000.
  - AT MINIMUM ALL WIRES TO BE SUPPORTED AND SECURED PER CODE REQUIREMENTS. USE CLAMP 10495 OR 10497 OR WIRE TIE 8343 OR 108046 AND SCREW G67-XX-XXX OR G56-XX-XXX AS APPROPRIATE FOR INSTALLATION.

NOTES:

- 9PC TAILGATE PACKAGE
- 265 CODES/STANDARDS-CSA/CMVSS
- 1B1 CODES/STANDARDS USA

1B1 265



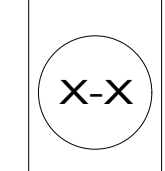
DSNR:		ALL DIMENSIONS ARE IN MILLIMETERS	
DIFFR:		MATERIAL:	
UNSPECIFIED TOLERANCES:			
WHOLE DIM (X)	: 3		
ONE-PLACE (X.X)	: 1.5		
TWO-PLACE (X.XX)	: 0.50		
ANGLE	: 1°		
REFER TO ES0018 FOR FASTENER TIGHTENING GUIDELINES		WEIGHT: (LBS)	FIRST USED:
			17 R42HL

DESCRIPTION:  
**WIRING INSTL-BODY, 110V**

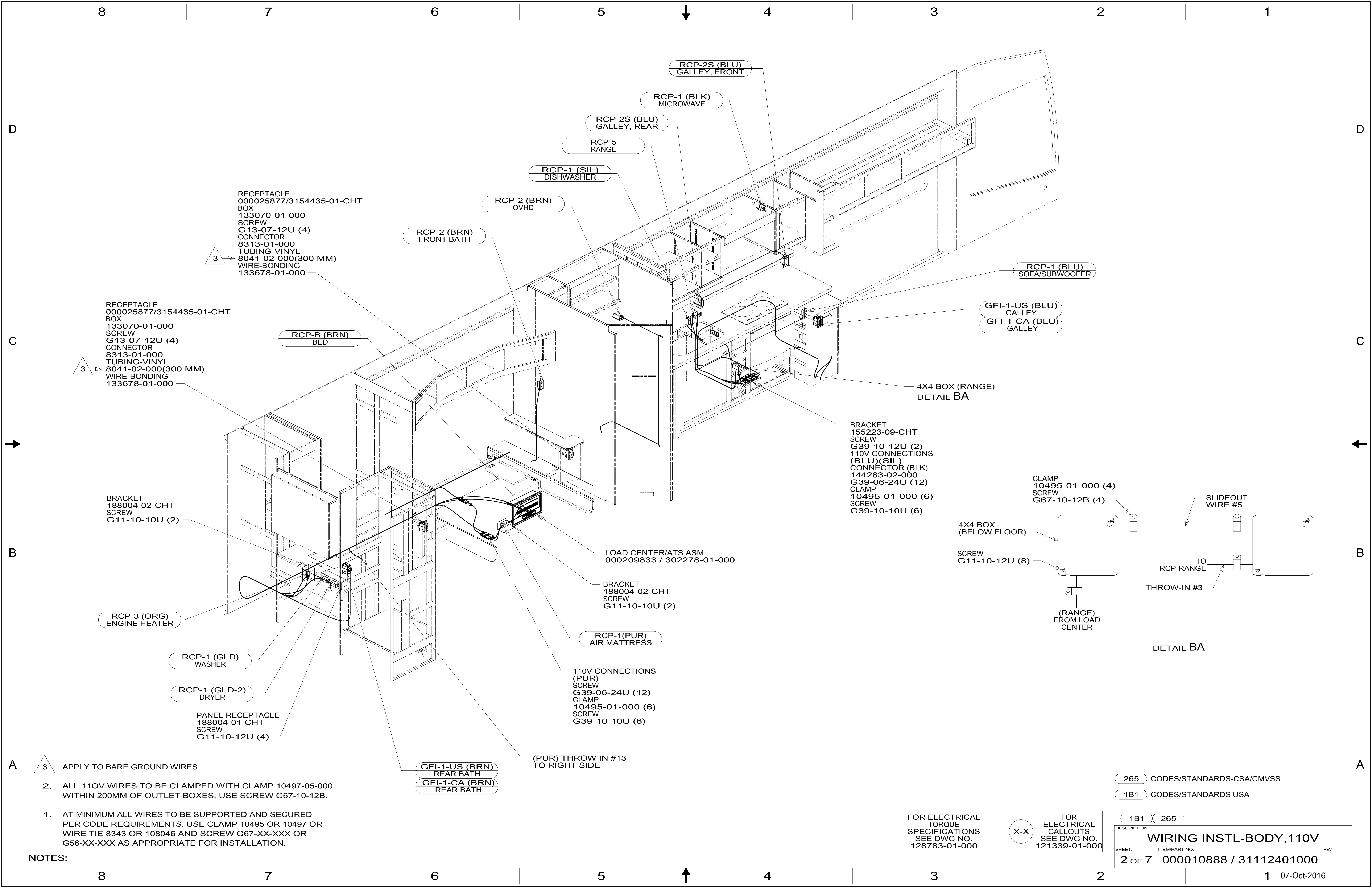
SHEET: 1 OF 7 ITEM/PART NO: 000010888 / 31112401000 REV:

FOR ELECTRICAL TORQUE SPECIFICATIONS SEE DWG NO. 128783-01-000

FOR ELECTRICAL CALLOUTS SEE DWG NO. 121339-01-000



8 7 6 5 4 3 2 1 REF: 1 07-Oct-2016



RECEPTACLE  
000025877/3154435-01-CHT  
BOX  
133070-01-000  
SCREW  
G13-07-12U (4)  
CONNECTOR  
8313-01-000  
TUBING-VINYL  
8041-02-000(300 MM)  
WIRE-BONDING  
133678-01-000

RECEPTACLE  
000025877/3154435-01-CHT  
BOX  
133070-01-000  
SCREW  
G13-07-12U (4)  
CONNECTOR  
8313-01-000  
TUBING-VINYL  
8041-02-000(300 MM)  
WIRE-BONDING  
133678-01-000

BRACKET  
188004-02-CHT  
SCREW  
G11-10-10U (2)

LOAD CENTER/ATS ASM  
000209833 / 302278-01-000

BRACKET  
188004-02-CHT  
SCREW  
G11-10-10U (2)

RCP-1(PUR)  
AIR MATTRESS

110V CONNECTIONS  
(PUR)  
SCREW  
G39-06-24U (12)  
CLAMP  
10495-01-000 (6)  
SCREW  
G39-10-10U (6)

(PUR) THROW IN #13  
TO RIGHT SIDE

BRACKET  
155223-09-CHT  
SCREW  
G39-10-12U (2)  
110V CONNECTIONS  
(BLU)(SIL)  
CONNECTOR (BLK)  
144283-02-000  
CLAMP  
G39-06-24U (12)  
CLAMP  
10495-01-000 (6)  
SCREW  
G39-10-10U (6)

CLAMP  
10495-01-000 (4)  
SCREW  
G67-10-12B (4)

4X4 BOX  
(BELOW FLOOR)

SCREW  
G11-10-12U (8)

(RANGE)  
FROM LOAD  
CENTER

SLIDEOUT  
WIRE #5

TO  
RCP-RANGE

THROW-IN #3

DETAIL BA

3 APPLY TO BARE GROUND WIRES

2. ALL 110V WIRES TO BE CLAMPED WITH CLAMP 10497-05-000 WITHIN 200MM OF OUTLET BOXES, USE SCREW G67-10-12B.

1. AT MINIMUM ALL WIRES TO BE SUPPORTED AND SECURED PER CODE REQUIREMENTS. USE CLAMP 10495 OR 10497 OR WIRE TIE 8343 OR 108046 AND SCREW G67-XX-XXX OR G56-XX-XXX AS APPROPRIATE FOR INSTALLATION.

NOTES:

265 CODES/STANDARDS-CSA/CMVSS

1B1 CODES/STANDARDS USA

1B1 265

FOR ELECTRICAL  
TORQUE  
SPECIFICATIONS  
SEE DWG NO.  
128783-01-000

X-X  
FOR  
ELECTRICAL  
CALLOUTS  
SEE DWG NO.  
121339-01-000

DESCRIPTION:  
**WIRING INSTL-BODY, 110V**

SHEET: 2 OF 7 ITEM/PART NO: 000010888 / 31112401000 REV

1 07-Oct-2016

8 7 6 5 4 3 2 1

D

D

C

C

B

B

A

A

COVER-WIRE  
153862-02-CHT  
155469-01-CHT  
SCREW  
G67-10-12U (4)

BRACKET  
155223-09-CHT  
SCREW  
G39-10-12U (2)  
110V CONNECTIONS  
(BLU)(BRN)(GRY)  
SCREW  
G39-06-24U (6)  
CLAMP  
10495-01-000 (6)  
SCREW  
G39-10-10U (6)

FIREPLACE  
184456-01-CHT

RCP-1 (GRY)  
FIREPLACE

RCP-3 (YEL)  
REFRIGERATOR

RCP-2 (PUR)  
PASS PANEL

RCP-2 (BRN)  
DINETTE, FRONT

RCP-2 (BRN)  
DINETTE, REAR

EXT ENT CTR RCPS (REF)  
(BLU) THROW IN #8

RCP-2 (BLU)  
LOUNGE TV

RCP-2 (BLU)  
SOUNDBAR

RCP-B (GRN)  
PANTRY

RCP-B (LT BLU)  
PANTRY

RCP-B (AWNING)  
PANTRY 63H

RCP-B (RED)  
PANTRY

RCP-B (PUR)  
PANTRY

RCP-2 (PUR)  
BED TV

RCP-2 (PUR)  
SAT PREP

RCP-2 (PUR)  
SOUNDBAR

110V CONNECTION  
(PUR)  
SCREW  
G39-06-24U (4)  
CLAMP  
10495-01-000 (2)  
SCREW  
G39-10-12U (2)

THROW IN #4

(PUR) TO  
LEFT SIDE

- NOTES:
1. AT MINIMUM ALL WIRES TO BE SUPPORTED AND SECURED PER CODE REQUIREMENTS. USE CLAMP 10495 OR 10497 OR WIRE TIE 8343 OR 108046 AND SCREW G67-XX-XXX OR G56-XX-XXX AS APPROPRIATE FOR INSTALLATION.
  2. ALL 110V WIRES TO BE CLAMPED WITH CLAMP 10497-05-000 WITHIN 200MM OF OUTLET BOXES, USE SCREW G67-10-12B.

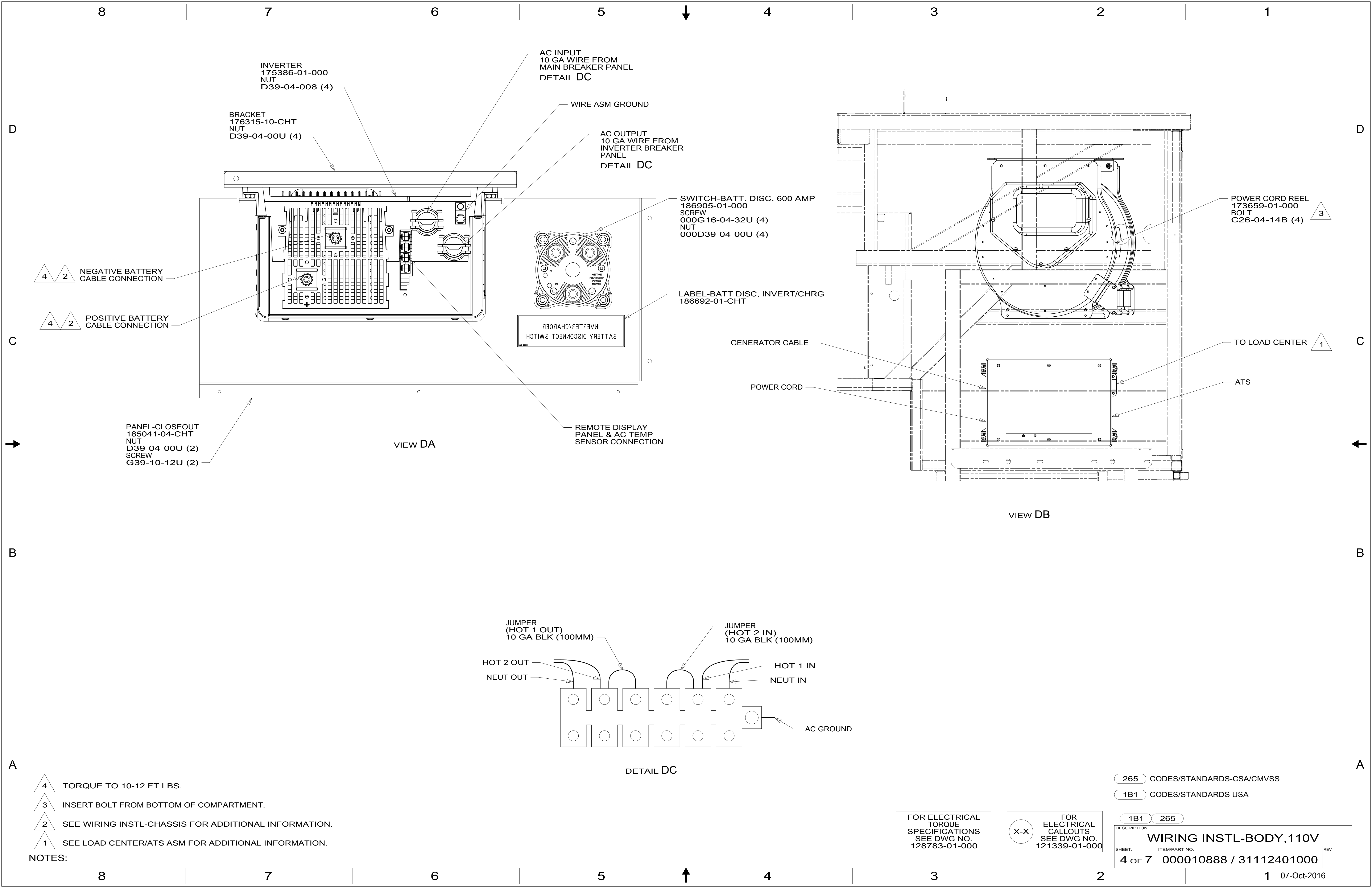
- 63H AWNING (2) PATIO, ARMLESS
- 265 CODES/STANDARDS-CSA/CMVSS
- 1B1 CODES/STANDARDS USA

FOR ELECTRICAL  
TORQUE  
SPECIFICATIONS  
SEE DWG NO.  
128783-01-000

X-X  
FOR ELECTRICAL  
CALLOUTS  
SEE DWG NO.  
121339-01-000

DESCRIPTION:	1B1 265	
<b>WIRING INSTL-BODY, 110V</b>		
SHEET:	ITEM/PART NO.:	REV
3 OF 7	000010888 / 31112401000	

8 7 6 5 4 3 2 1 07-Oct-2016



INVERTER  
175386-01-000  
NUT  
D39-04-008 (4)

BRACKET  
176315-10-CHT  
NUT  
D39-04-00U (4)

AC INPUT  
10 GA WIRE FROM  
MAIN BREAKER PANEL  
DETAIL DC

WIRE ASM-GROUND

AC OUTPUT  
10 GA WIRE FROM  
INVERTER BREAKER  
PANEL  
DETAIL DC

SWITCH-BATT. DISC. 600 AMP  
186905-01-000  
SCREW  
000G16-04-32U (4)  
NUT  
000D39-04-00U (4)

LABEL-BATT DISC, INVERT/CHRG  
186692-01-CHT

POWER CORD REEL  
173659-01-000  
BOLT  
C26-04-14B (4)

4 2  
NEGATIVE BATTERY  
CABLE CONNECTION

4 2  
POSITIVE BATTERY  
CABLE CONNECTION

GENERATOR CABLE

POWER CORD

TO LOAD CENTER 1

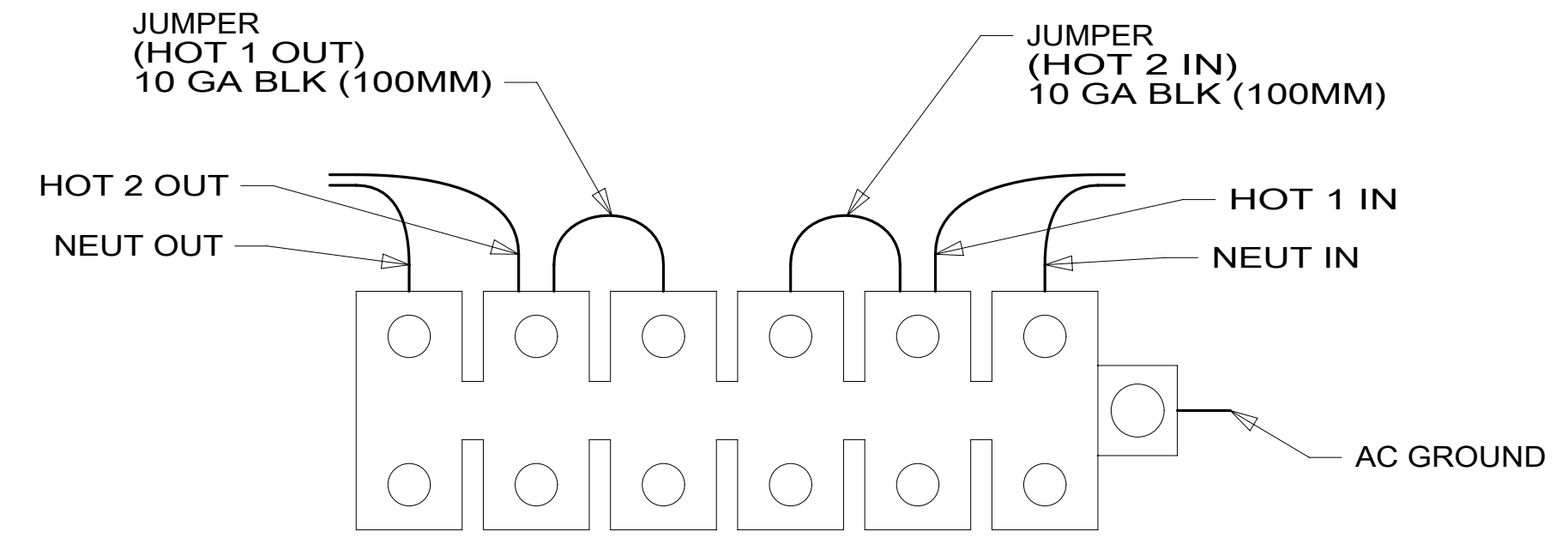
ATS

PANEL-CLOSEOUT  
185041-04-CHT  
NUT  
D39-04-00U (2)  
SCREW  
G39-10-12U (2)

VIEW DA

REMOTE DISPLAY  
PANEL & AC TEMP  
SENSOR CONNECTION

VIEW DB



DETAIL DC

- NOTES:
- 4 TORQUE TO 10-12 FT LBS.
  - 3 INSERT BOLT FROM BOTTOM OF COMPARTMENT.
  - 2 SEE WIRING INSTL-CHASSIS FOR ADDITIONAL INFORMATION.
  - 1 SEE LOAD CENTER/ATS ASM FOR ADDITIONAL INFORMATION.

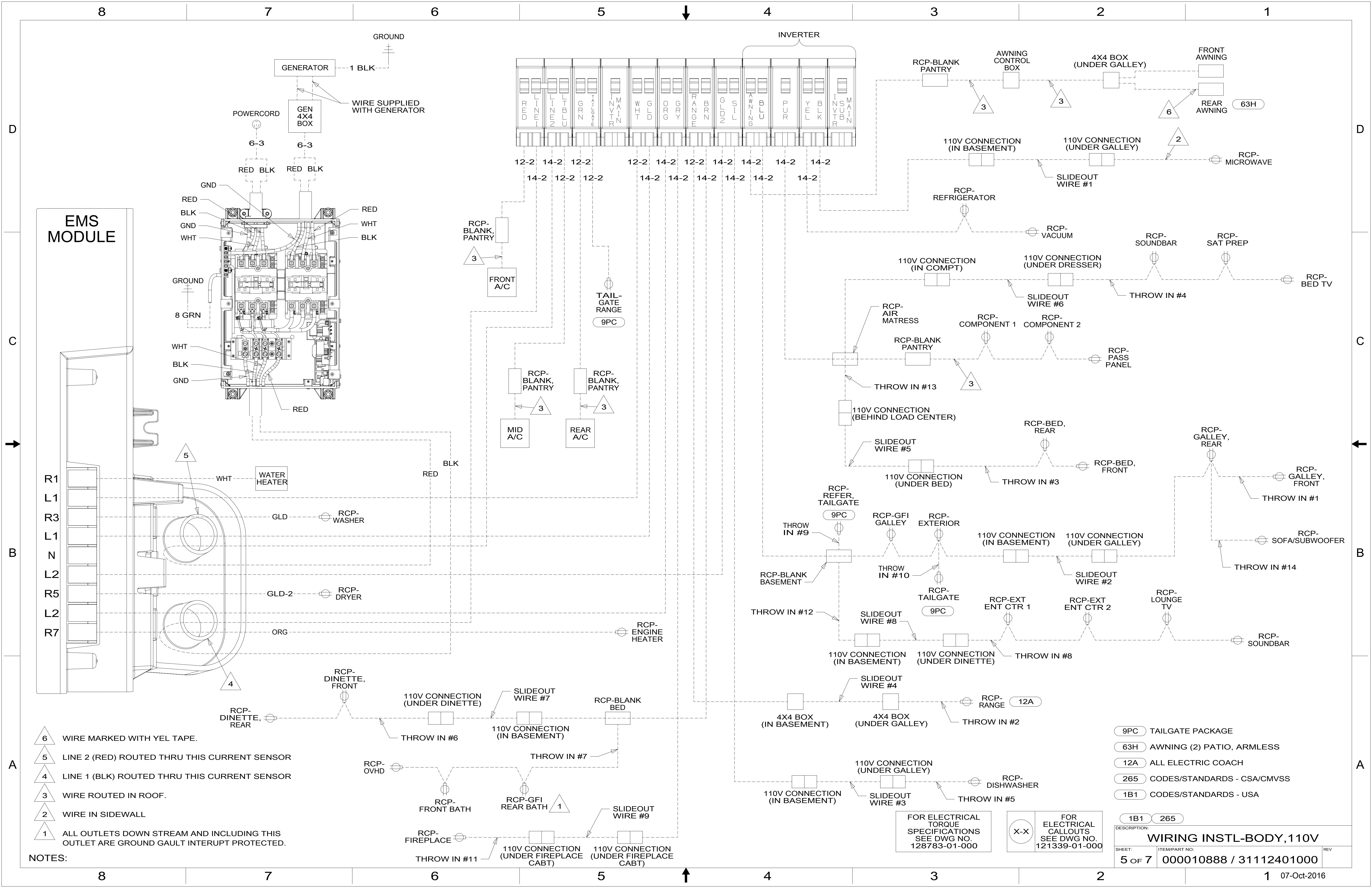
265 CODES/STANDARDS-CSA/CMVSS  
1B1 CODES/STANDARDS USA

FOR ELECTRICAL  
TORQUE  
SPECIFICATIONS  
SEE DWG NO.  
128783-01-000

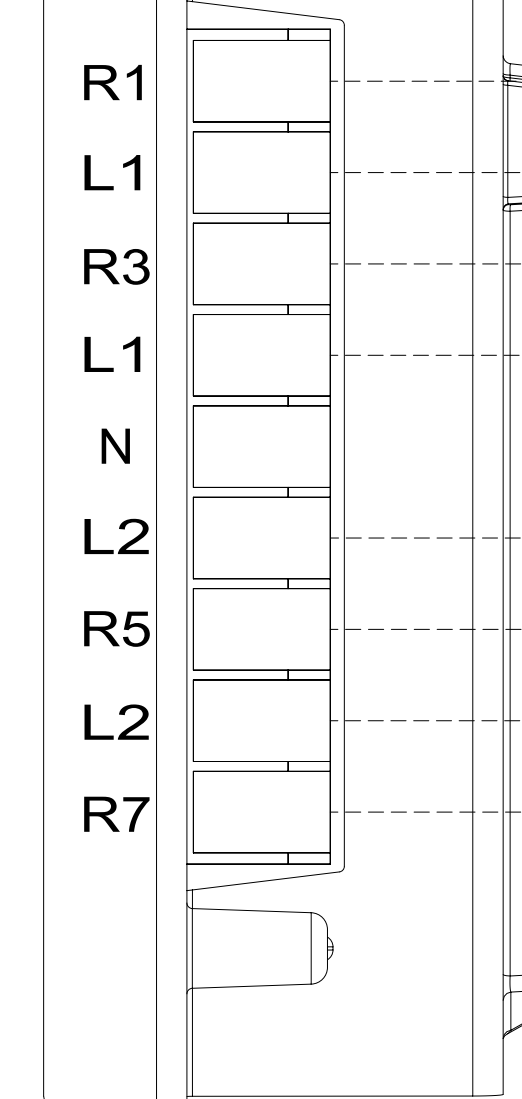
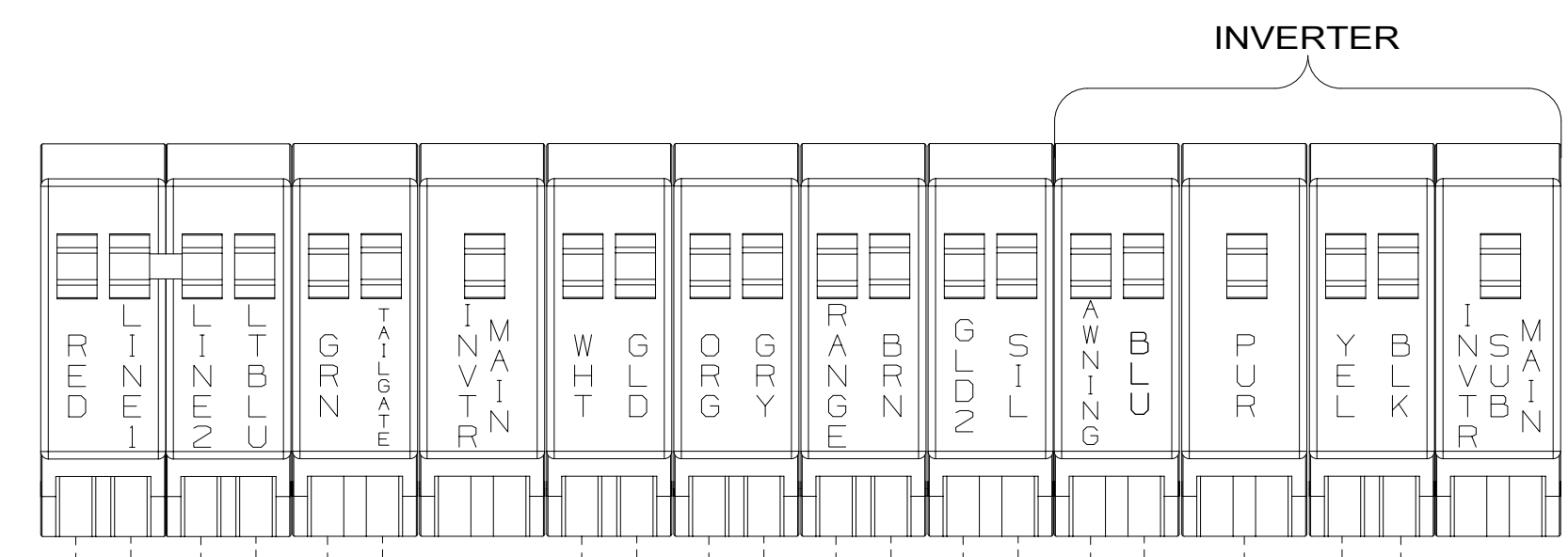
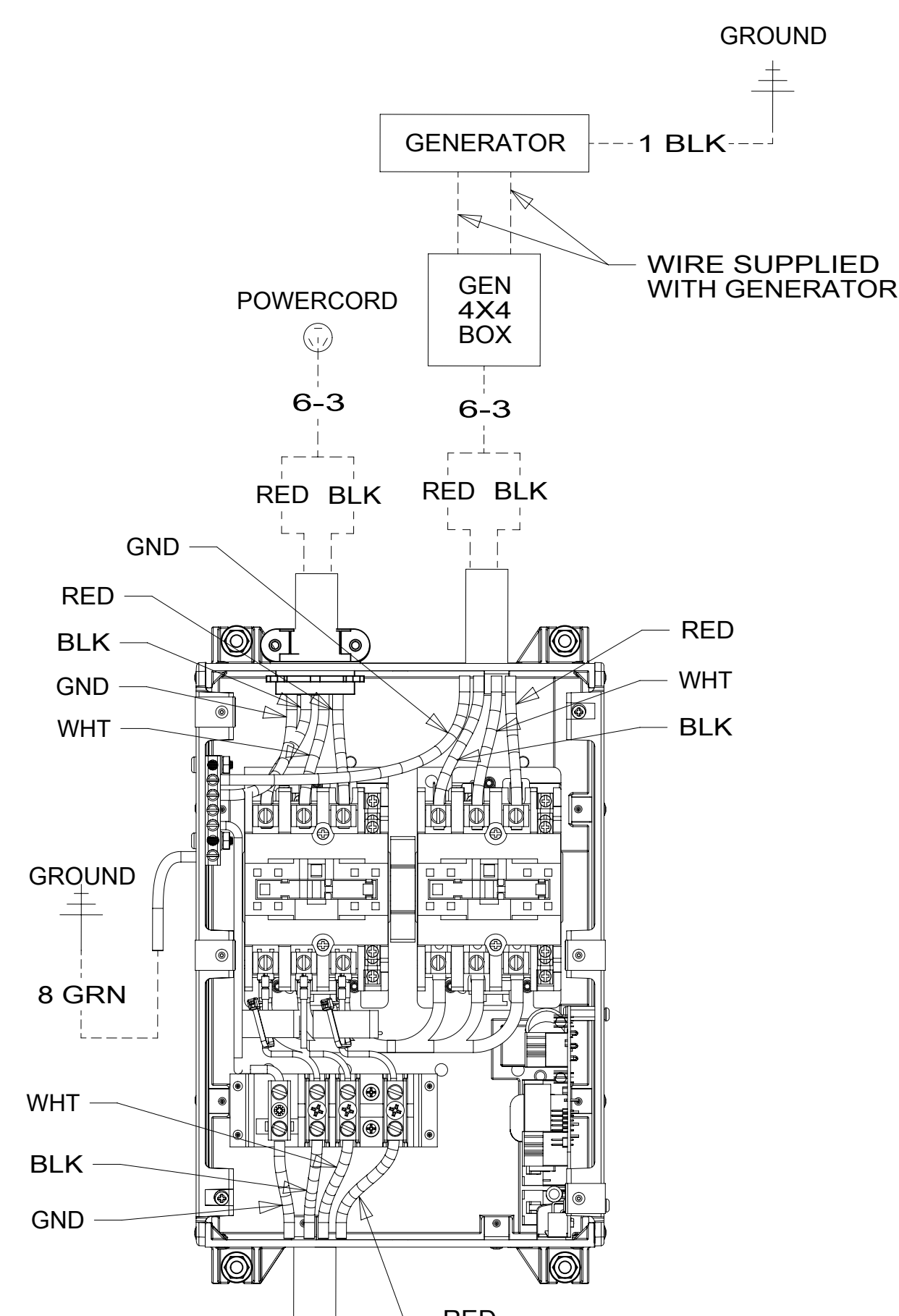
X-X  
FOR ELECTRICAL  
CALLOUTS  
SEE DWG NO.  
121339-01-000

DESCRIPTION:		1B1	265
<b>WIRING INSTL-BODY, 110V</b>			
SHEET:	ITEM/PART NO.:	REV	
4 OF 7	000010888 / 31112401000		





**EMS MODULE**



- NOTES:**
- 6 WIRE MARKED WITH YEL TAPE.
  - 5 LINE 2 (RED) ROUTED THRU THIS CURRENT SENSOR
  - 4 LINE 1 (BLK) ROUTED THRU THIS CURRENT SENSOR
  - 3 WIRE ROUTED IN ROOF.
  - 2 WIRE IN SIDEWALL
  - 1 ALL OUTLETS DOWN STREAM AND INCLUDING THIS OUTLET ARE GROUND GAULT INTERRUPT PROTECTED.

- 9PC TAILGATE PACKAGE
- 63H AWNING (2) PATIO, ARMLESS
- 12A ALL ELECTRIC COACH
- 265 CODES/STANDARDS - CSA/CMVSS
- 1B1 CODES/STANDARDS - USA

FOR ELECTRICAL TORQUE SPECIFICATIONS SEE DWG NO. 128783-01-000

FOR ELECTRICAL CALLOUTS SEE DWG NO. 121339-01-000

DESCRIPTION:	<b>WIRING INSTL-BODY, 110V</b>	
SHEET:	ITEM/PART NO.:	REV
5 OF 7	000010888 / 31112401000	
07-Oct-2016		

D

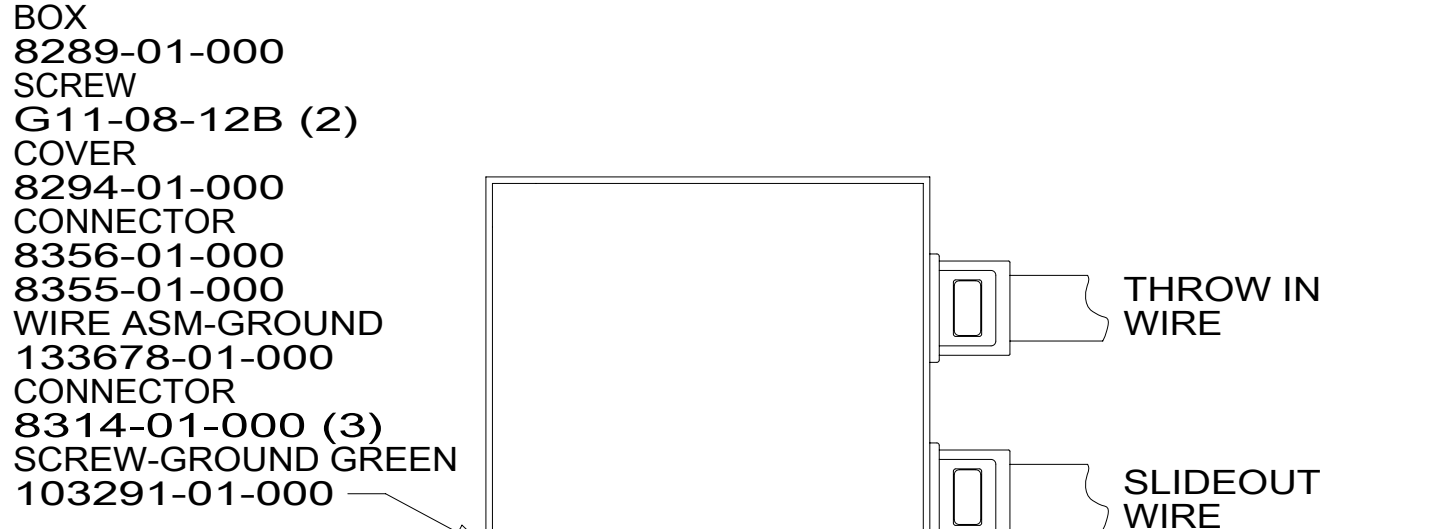
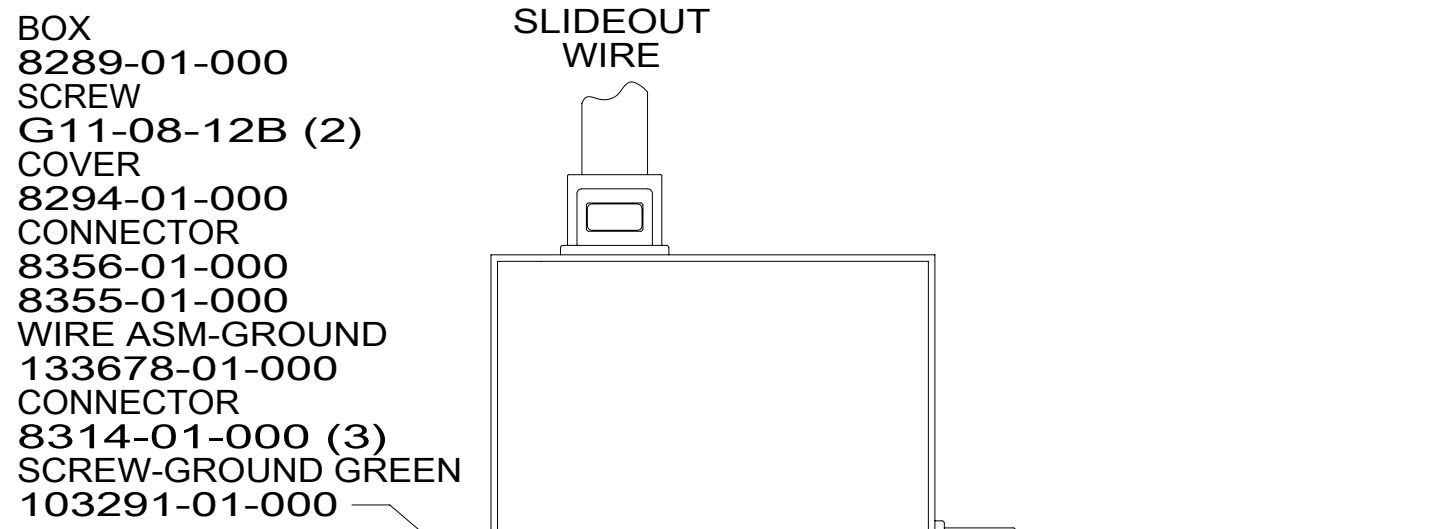
C

B

A

		R42HL	
RED	1B1	136135-07-086	
	265	136136-07-086	
MAIN	1B1	174031-01-056	
	265	174031-01-056	
GRN	1B1	136135-08-086	
	265	136136-08-086	
LT BLU	1B1	136135-21-086	
	265	136136-21-086	
INVERTER CHARGER MAIN	1B1	136137-01-088	
	265	136138-01-088	
YEL	1B1	136131-05-124	
	265	136134-05-124	
GLD	1B1	136131-10-071	
	265	136134-10-071	
GLD-2	1B1	136131-20-071	
	265	136134-20-071	
WHT	1B1	136135-09-066	
	265	136136-09-066	
RANGE	1B1	136135-01-066	2
	265	136136-01-066	2
AWNING	1B1	136131-01-086	
	265	136134-01-086	63H

		R42HL	
INVERTER CHARGER SUB MAIN	1B1	136137-01-096	
	265	136138-01-096	
BLU	1B1	136131-02-160	1
	265	136134-02-160	1
BRN	1B1	136131-03-100	1
	265	136134-03-100	1
PUR	1B1	136131-04-094	
	265	136134-04-094	
ORG	1B1	136131-16-066	
	265	136134-16-066	
BLK	1B1	136131-06-065	1
	265	136134-06-065	1
SIL	1B1	136131-11-065	1
	265	136134-11-065	1
GRY	1B1	136131-15-100	1
	265	136134-15-100	1
GROUND MAIN		136145-01-060	
GROUND ATS		136145-01-030	
GROUND INVERTER		136145-04-006	
CABLE ASM GEN		174031-03-095	67G
TAILGATE	1B1	136135-01-061	9PC
	265	136136-01-061	



DETAIL FA

3 CONNECT WIRES, WHT TO WHT, BLK TO BLK, GROUNDS TO GROUNDS, KEEPING CIRCUITS SEPERATED.

2 SEE DETAIL FA FOR CONNECTOR INSTALLATION.

1 SEE DETAIL GA FOR CONNECTOR INSTALLATION.

NOTES:

- 9PC TAILGATE PACKAGE
- 67G GEN-10KW\_ONAN QUIET DIESEL
- 63H AWNING (2) PATIO, ARMLESS
- 214 DISHWASHER DRAWER STYLE
- 265 CODES/STANDARDS - CSA/CMVSS
- 1B1 CODES/STANDARDS - USA

FOR ELECTRICAL TORQUE SPECIFICATIONS SEE DWG NO. 128783-01-000

FOR ELECTRICAL CALLOUTS SEE DWG NO. 121339-01-000

DESCRIPTION:	1B1 265	
<b>WIRING INSTL-BODY, 110V</b>		
SHEET:	ITEM/PART NO:	REV
6 OF 7	000010888 / 31112401000	

8

7

6

5

4

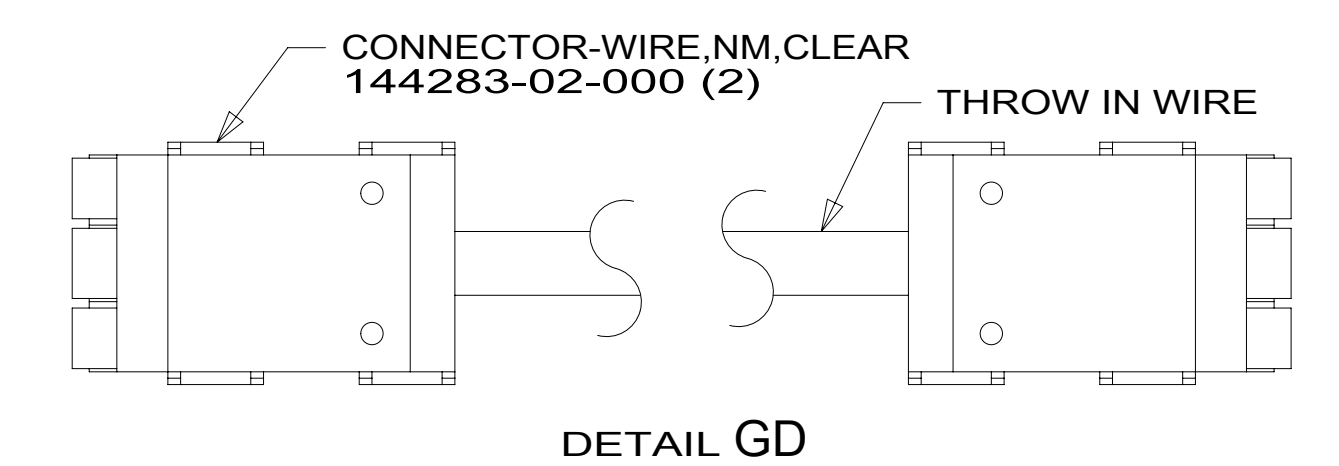
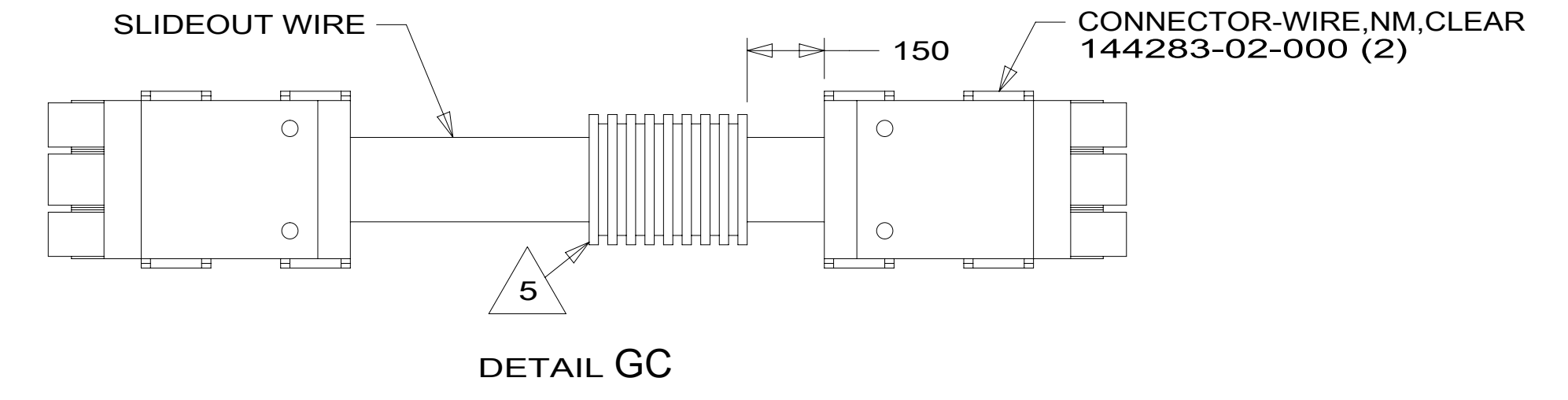
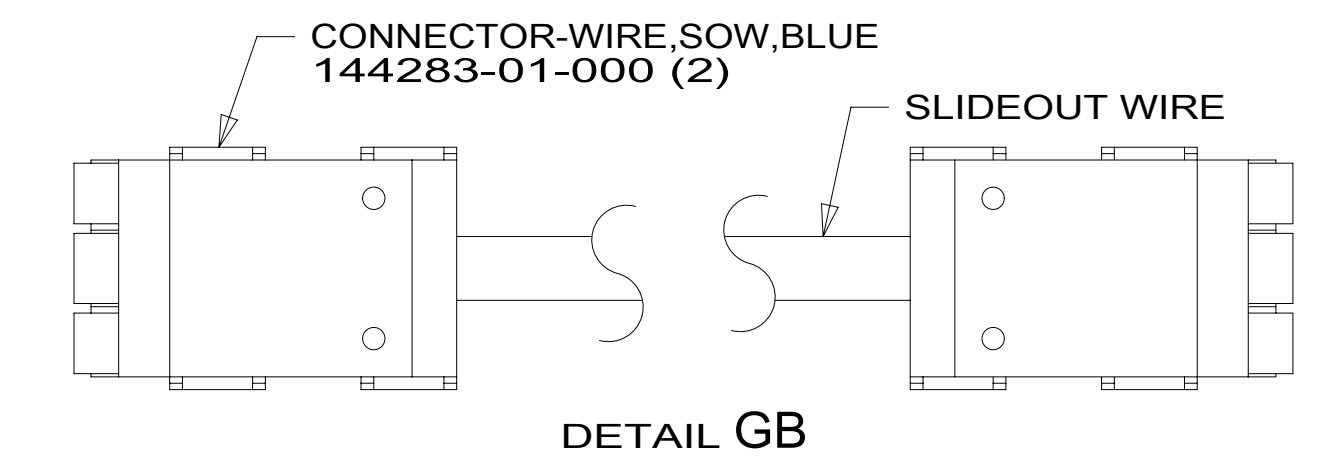
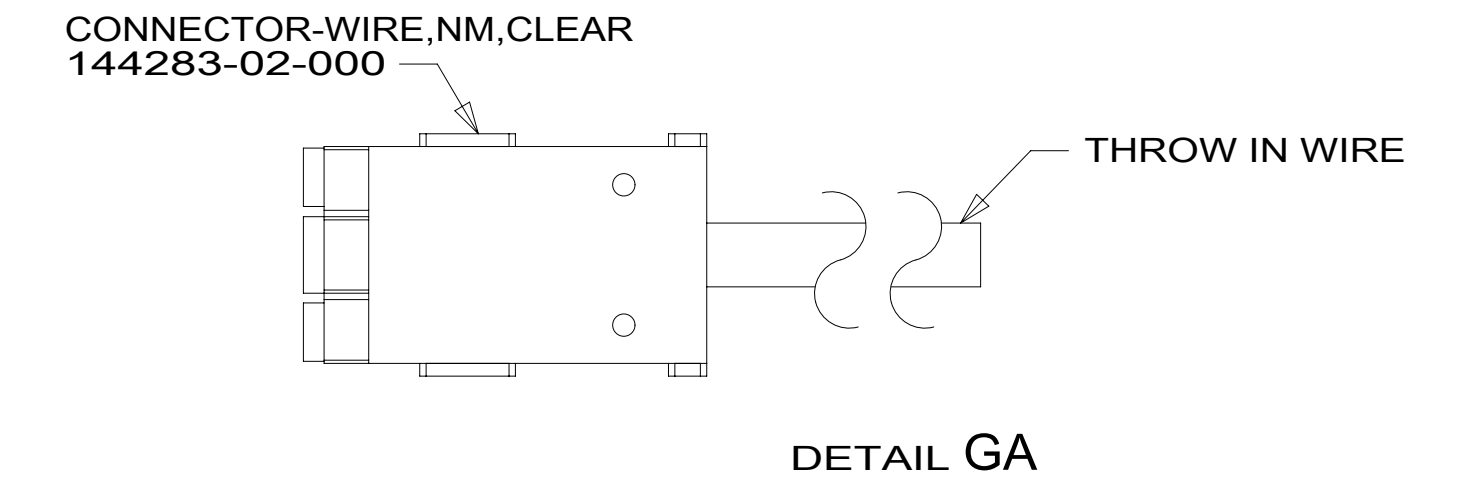
3

2

1

		R42HD/HL	
SLIDEOUT WIRE #1		136151-06-040	2
SLIDEOUT WIRE #2		136151-02-040	2
SLIDEOUT WIRE #3		136151-11-040	2
SLIDEOUT WIRE #4		136152-01-044	3
SLIDEOUT WIRE #5		136151-04-022	2
SLIDEOUT WIRE #6		136151-04-048	4
SLIDEOUT WIRE #7		136151-03-040	4
SLIDEOUT WIRE #8		136151-02-040	4
SLIDEOUT WIRE #9		136151-15-040	4
THROW IN WIRE #1	1B1	136131-02-041	1
	265	136134-02-041	1
THROW IN WIRE #2	1B1	136135-01-017	3
	265	136136-01-017	3
THROW IN WIRE #3	1B1	136131-04-044	1
	265	136134-04-044	1

		R42HD/HL	
THROW IN WIRE #4	1B1	136131-04-040	1
	265	136134-04-040	1
THROW IN WIRE #5	1B1	136131-11-020	1
	265	136134-11-020	1
THROW IN WIRE #6	1B1	136131-03-039	1
	265	136134-03-039	1
THROW IN WIRE #7	1B1	136131-03-210	
	265	136134-03-210	
THROW IN WIRE #8	1B1	136131-02-070	1
	265	136134-02-070	1
THROW IN WIRE #9	1B1	136131-02-045	9PC
	265	136134-02-045	9PC
THROW IN WIRE #10	1B1	136131-02-070	9PC
	265	136134-02-070	9PC
THROW IN WIRE #11	1B1	136131-15-038	1
	265	136134-15-038	1
THROW IN WIRE #12	1B1	136131-02-040	1
	265	136134-02-040	1
THROW IN WIRE #13	1B1	136131-04-010	6
	265	136134-04-010	6
THROW IN WIRE #14	1B1	136131-02-029	
	265	136134-02-029	



- NOTES:
- 6 SEE DETAIL GD FOR CONNECTOR INSTALLATION.
  - 5 APPLY 300MM OF CONDUIT-CONVOLUTE 41953-05-000 OVER WIRE AT DIMENSION SHOWN AND SECURE BOTH ENDS OF TUBING TO WIRE WITH TAPE 8363-01-000.
  - 4 SEE DETAIL GC FOR CONNECTOR INSTALLATION.
  - 3 SEE DETAIL FA FOR CONNECTOR INSTALLATION.
  - 2 SEE DETAIL GB FOR CONNECTOR INSTALLATION.
  - 1 SEE DETAIL GA FOR CONNECTOR INSTALLATION.

- 9PC TAILGATE PACKAGE
- 265 CODES/STANDARDS - CSA/CMVSS
- 1B1 CODES/STANDARDS - USA

FOR ELECTRICAL TORQUE SPECIFICATIONS SEE DWG NO. 128783-01-000

FOR ELECTRICAL CALLOUTS SEE DWG NO. 121339-01-000

DESCRIPTION:	1B1 265	
<b>WIRING INSTL-BODY, 110V</b>		
SHEET:	ITEM/PART NO:	REV
7 OF 7	000010888 / 31112401000	

8

7

6

5

4

3

2

1

07-Oct-2016