

- PLATE-WALL
149557-03-CHT
SCREW
G39-08-08U (4)
- SWITCH-SERVICE LAMP
108357-21-000
ACTUATOR
108356-01-CHT
- SWITCH-CORD REEL
108357-20-000
ACTUATOR
108356-01-CHT
- LABEL
130170-07-000
- CONTROL-CHARGE, SOLAR 30 AMP (282)
191278-01-000
- PORT-SOLAR, SINGLE (282)
191558-01-000

VIEW AA

- CONTROL-CHARGE, SOLAR 30 AMP (282)
191278-01-000
- PORT-SOLAR, SINGLE (282)
191558-01-000

- WIRE ASM-AUX HOLDING (GALLEY)
151316-02-000
- WIRE ASM-MAIN HOLDING
151317-02-000
TOILET-TANK SENSOR
170062-03-000
TOILET-SENSOR HARNESS
170062-05-000

- WIRE ASM-AUX HOLDING (BATH)
151316-02-000

- CONTROL-SLIDEOUT, IN-WALL
189400-01-000
HARNESS-SLIDEOUT MOTOR
191661-01-000
191661-03-000

- CONTROL-SLIDEOUT, IN-WALL
189400-01-000
HARNESS-SLIDEOUT MOTOR
191661-02-000
191661-04-000

- GASKET-THERMOSTAT
134588-09-000
THERMOSTAT-ZONE
171186-02-CHT

- PLUG-PLASTIC
61420-15-000 (2)

- TO CHASSIS CONNECTIONS
WIRE ASM-DIODE
190284-01-000

- LO1-3
6
- BRACKET
185915-01-CHT (4)
SCREW
G39-10-12U (16)

CIRCUITS ZZG & JJU TO AQUA-HOT ASSIST PUMP. CONNECT ZZG TO RED WIRE AND JJU TO BLACK WIRE

- WIRE ASM-COACH 1
000022387 / 314430-01-000
WIRE ASM-COACH 2
000022388 / 314429-01-000

- MODULE-SLIDEOUT
171058-02-000
SCREW
G39-08-12U (4)

- WIRE ASM-TANK WATER
151317-01-000

- LIGHT-LED, ADJUSTABLE
173407-01-CHT
CHANNEL-U
185471-01-CHT (9PC)

- SWITCH-ROCKER
135740-01-CHT
SWITCH-FLOOR
187008-01-CHT
SWITCH-CAPS
187009-01-CHT (2)
SCREW
G11-08-08U (2) (9PC)

- LO1-3
- BRACKET
185915-01-CHT
SCREW
G39-10-12U (4) (9PA)

3. ADD CONDUIT TO COVER CAPILLARY TUBE COMPLETELY. CLAMP OR WIRE TIE TO FRAME TUBES.

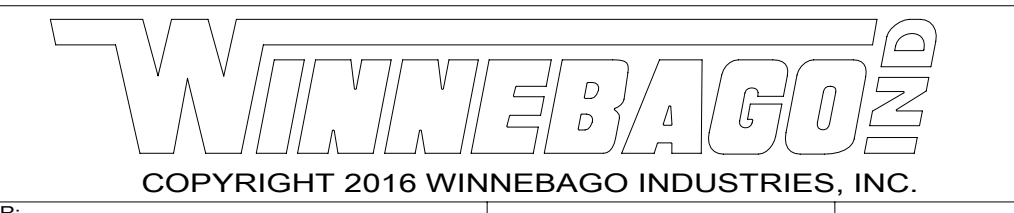
2. ROUTE TANK SENSOR WIRES SO THEY DO NOT PASS OVER SENSORS. USE WIRE TIE MOUNT 155366-01-000 AND WIRE TIE 8343-01-000 AS NEEDED. TANK SURFACE MUST BE CLEANED USING ISOPROPYL ALCOHOL AND PRIMED WITH PRIMER 94.

1. AT MINIMUM ALL WIRES TO BE SUPPORTED AND SECURED PER CODE REQUIREMENTS. USE CLAMP 10495 OR 10497 OR WIRE TIE 8343 OR 108046 AND SCREW G67-XX-XXX OR G56-XX-XXX AS APPROPRIATE FOR INSTALLATION.

NOTES:

- 9PC TAILGATE PACKAGE
- 9PA TAILGATE PACKAGE WITHOUT
- 282 SOLAR PANEL - 100 WATT
- 265 CODES/STANDARDS-CSA/CMVSS
- 1B1 CODES/STANDARDS USA

- 1B1 265



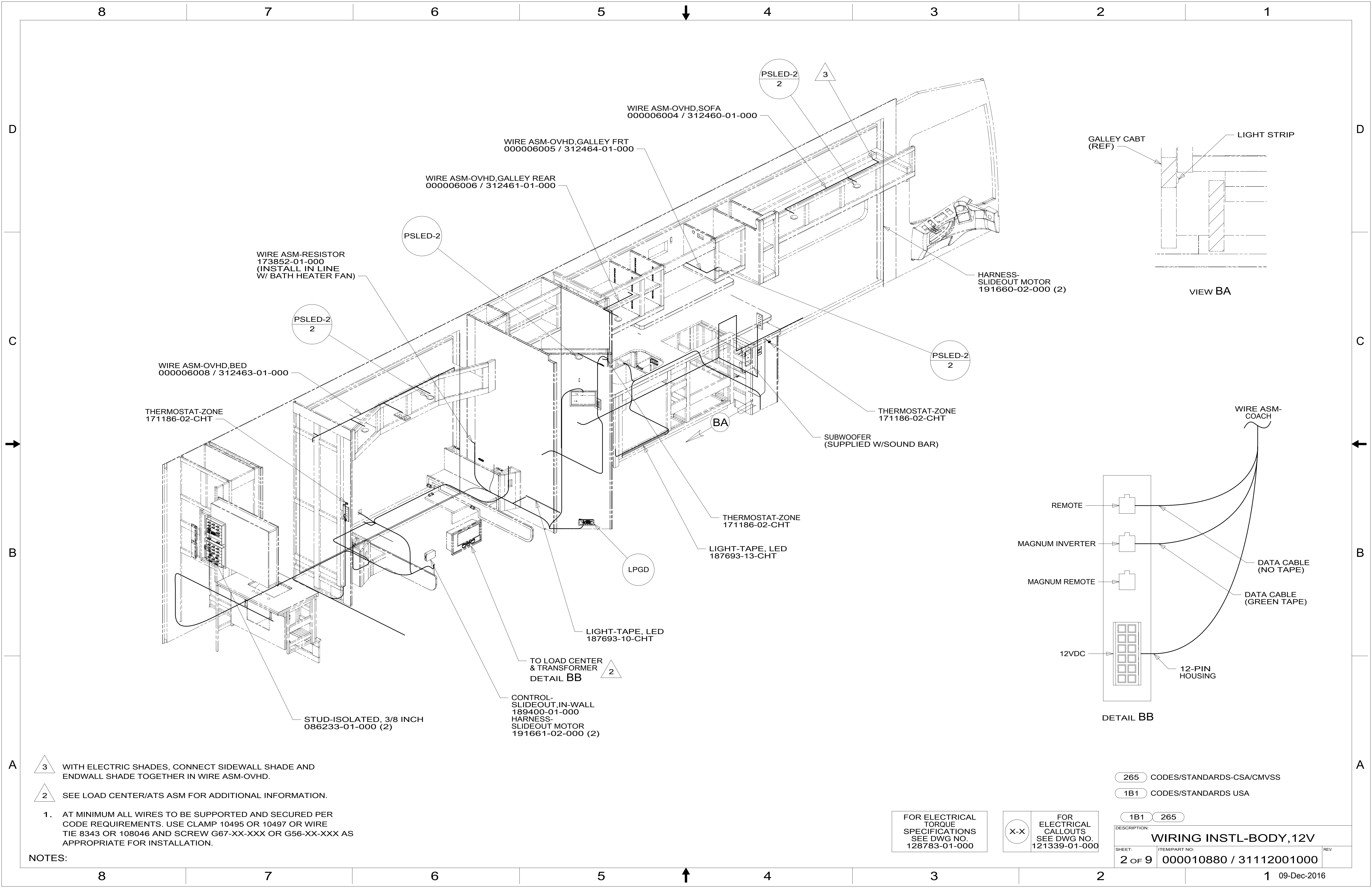
DSNR:	ALL DIMENSIONS ARE IN MILLIMETERS	
DFFR:		
UNSPECIFIED TOLERANCES:	MATERIAL:	
WHOLE DIM (X) ± 3		
ONE-PLACE (X.X) ± 1.5		
TWO-PLACE (X.XX) ± 0.50		
ANGLE ± 1°		
REFER TO ES0018 FOR FASTENER TIGHTENING GUIDELINES	WEIGHT: (LBS)	FIRST USED: 17 R42HL

DESCRIPTION: WIRING INSTL-BODY, 12V

SHEET: 1 OF 9	ITEM/PART NO.: 000010880 / 31112001000	REV:
---------------	--	------

FOR ELECTRICAL TORQUE SPECIFICATIONS SEE DWG NO. 128783-01-000

FOR ELECTRICAL CALLOUTS SEE DWG NO. 121339-01-000



8 7 6 5 4 3 2 1

D

C

B

A

PSLED-2
2

3

WIRE ASM-OVHD, SOFA
00006004 / 312460-01-000

WIRE ASM-OVHD, GALLEY FRT
00006005 / 312464-01-000

WIRE ASM-OVHD, GALLEY REAR
00006006 / 312461-01-000

PSLED-2

WIRE ASM-RESISTOR
173852-01-000
(INSTALL IN LINE
W/ BATH HEATER FAN)

PSLED-2
2

WIRE ASM-OVHD, BED
00006008 / 312463-01-000

THERMOSTAT-ZONE
171186-02-CHT

HARNESS-
SLIDEOUT MOTOR
191660-02-000 (2)

PSLED-2
2

THERMOSTAT-ZONE
171186-02-CHT

SUBWOOFER
(SUPPLIED W/SOUND BAR)

BA

THERMOSTAT-ZONE
171186-02-CHT

LPGD

LIGHT-TAPE, LED
187693-13-CHT

WIRE ASM-
COACH

TO LOAD CENTER
& TRANSFORMER
DETAIL BB

CONTROL-
SLIDEOUT, IN-WALL
189400-01-000
HARNESS-
SLIDEOUT MOTOR
191661-02-000 (2)

LIGHT-TAPE, LED
187693-10-CHT

STUD-ISOLATED, 3/8 INCH
086233-01-000 (2)

VIEW BA

GALLEY CABT
(REF)

LIGHT STRIP

DETAIL BB

REMOTE

MAGNUM INVERTER

MAGNUM REMOTE

12VDC

DATA CABLE
(NO TAPE)

DATA CABLE
(GREEN TAPE)

12-PIN
HOUSING

265 CODES/STANDARDS-CSA/CMVSS

1B1 CODES/STANDARDS USA

1B1 265

DESCRIPTION:
WIRING INSTL-BODY, 12V

SHEET: 2 OF 9

ITEM/PART NO.: 000010880 / 31112001000

REV

FOR ELECTRICAL
TORQUE
SPECIFICATIONS
SEE DWG NO.
128783-01-000

X-X

FOR
ELECTRICAL
CALLOUTS
SEE DWG NO.
121339-01-000

8 7 6 5 4 3 2 1

A

A

NOTES:

3 WITH ELECTRIC SHADES, CONNECT SIDEWALL SHADE AND
ENDWALL SHADE TOGETHER IN WIRE ASM-OVHD.

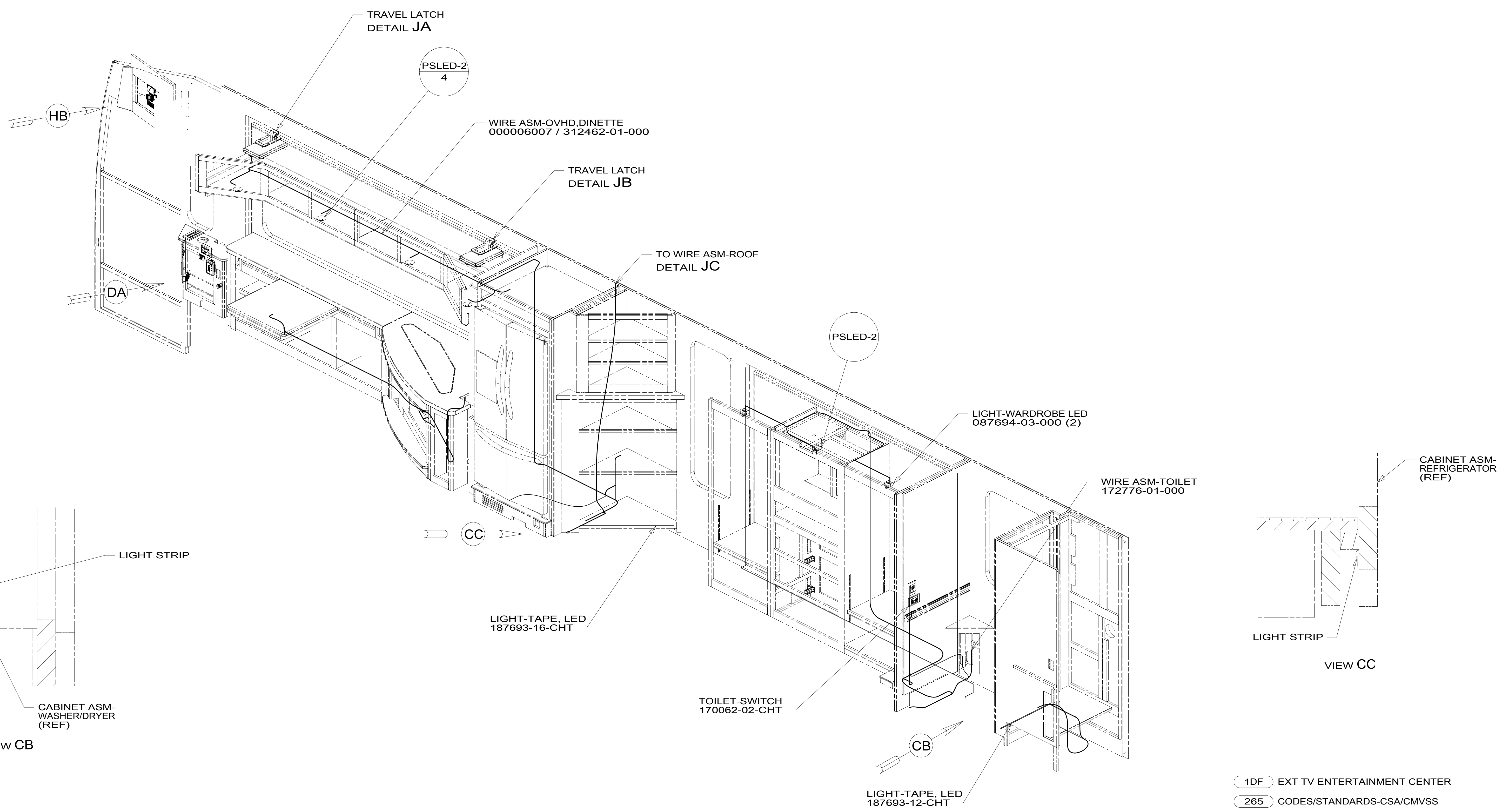
2 SEE LOAD CENTER/ATS ASM FOR ADDITIONAL INFORMATION.

1. AT MINIMUM ALL WIRES TO BE SUPPORTED AND SECURED PER
CODE REQUIREMENTS. USE CLAMP 10495 OR 10497 OR WIRE
TIE 8343 OR 108046 AND SCREW G67-XX-XXX OR G56-XX-XXX AS
APPROPRIATE FOR INSTALLATION.

09-Dec-2016

8 7 6 5 4 3 2 1

D
C
B
A



1. AT MINIMUM ALL WIRES TO BE SUPPORTED AND SECURED PER CODE REQUIREMENTS. USE CLAMP 10495 OR 10497 OR WIRE TIE 8343 OR 108046 AND SCREW G67-XX-XXX OR G56-XX-XXX AS APPROPRIATE FOR INSTALLATION.

NOTES:

FOR ELECTRICAL TORQUE SPECIFICATIONS SEE DWG NO. 128783-01-000

FOR ELECTRICAL CALLOUTS SEE DWG NO. 121339-01-000

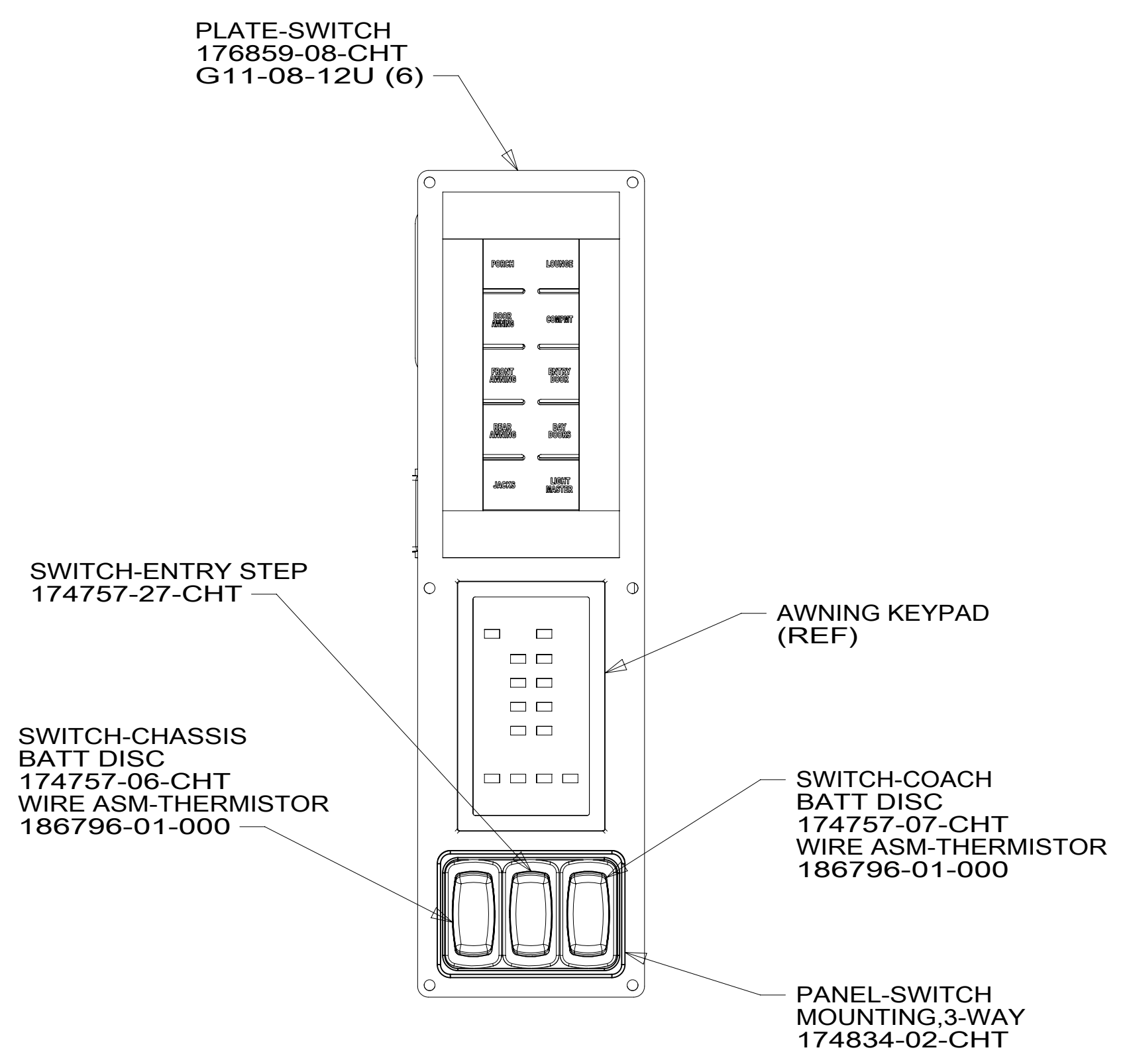
- 1DF EXT TV ENTERTAINMENT CENTER
- 265 CODES/STANDARDS-CSA/CMVSS
- 1B1 CODES/STANDARDS USA

DESCRIPTION:	1B1 265	
WIRING INSTL-BODY, 12V		
SHEET:	ITEM/PART NO:	REV
3 OF 9	000010880 / 31112001000	

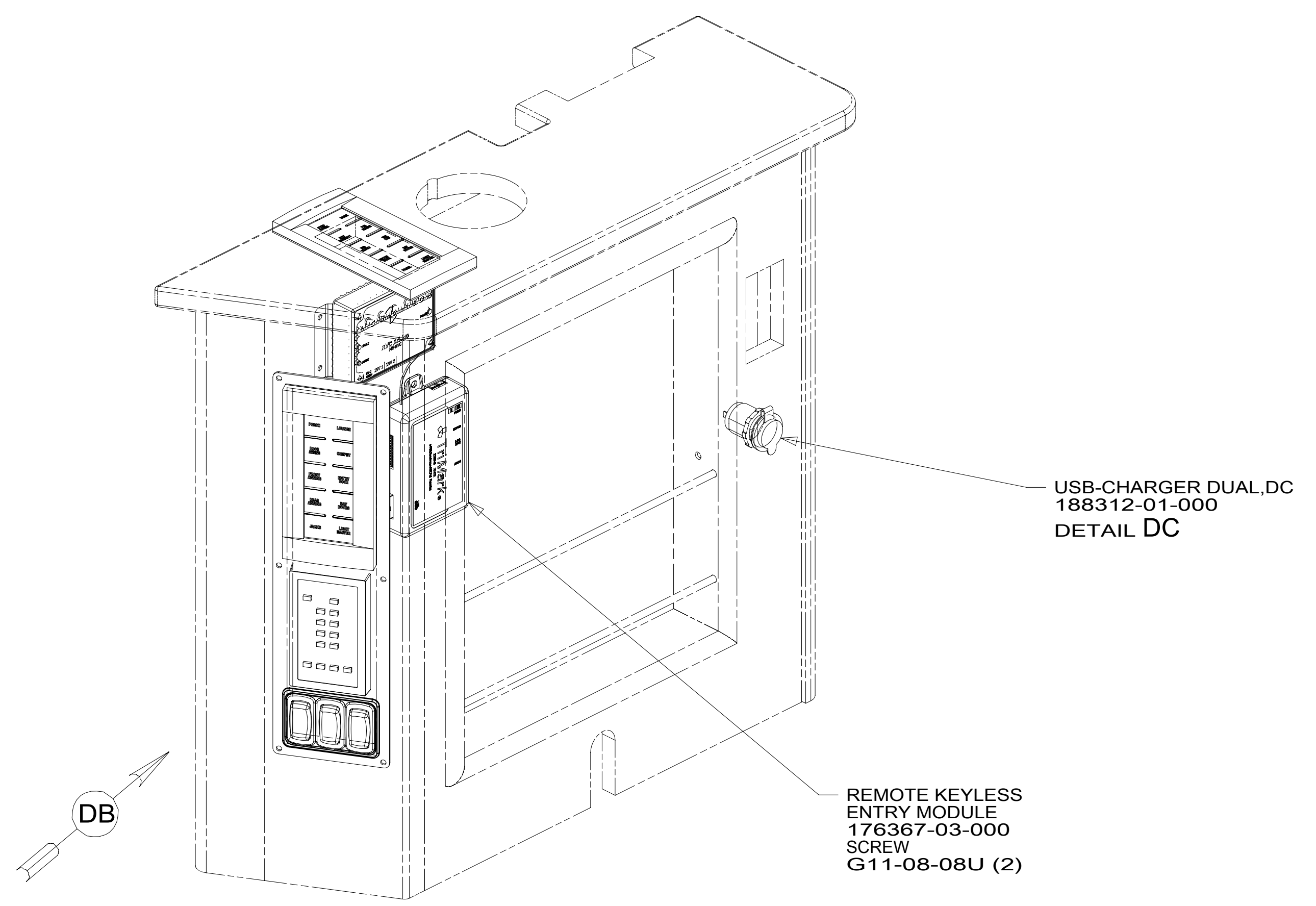
8 7 6 5 4 3 2 1 09-Dec-2016

8 7 6 5 4 3 2 1

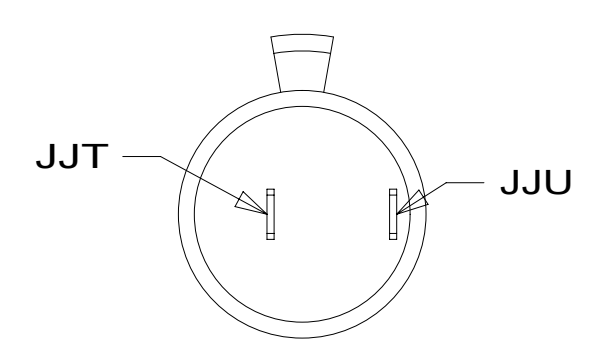
D
C
B
A



DETAIL DB



DETAIL DA



DETAIL DC

NOTES:

1. AT MINIMUM ALL WIRES TO BE SUPPORTED AND SECURED PER CODE REQUIREMENTS. USE CLAMP 10495 OR 10497 OR WIRE TIE 8343 OR 108046 AND SCREW G67-XX-XXX OR G56-XX-XXX AS APPROPRIATE FOR INSTALLATION.

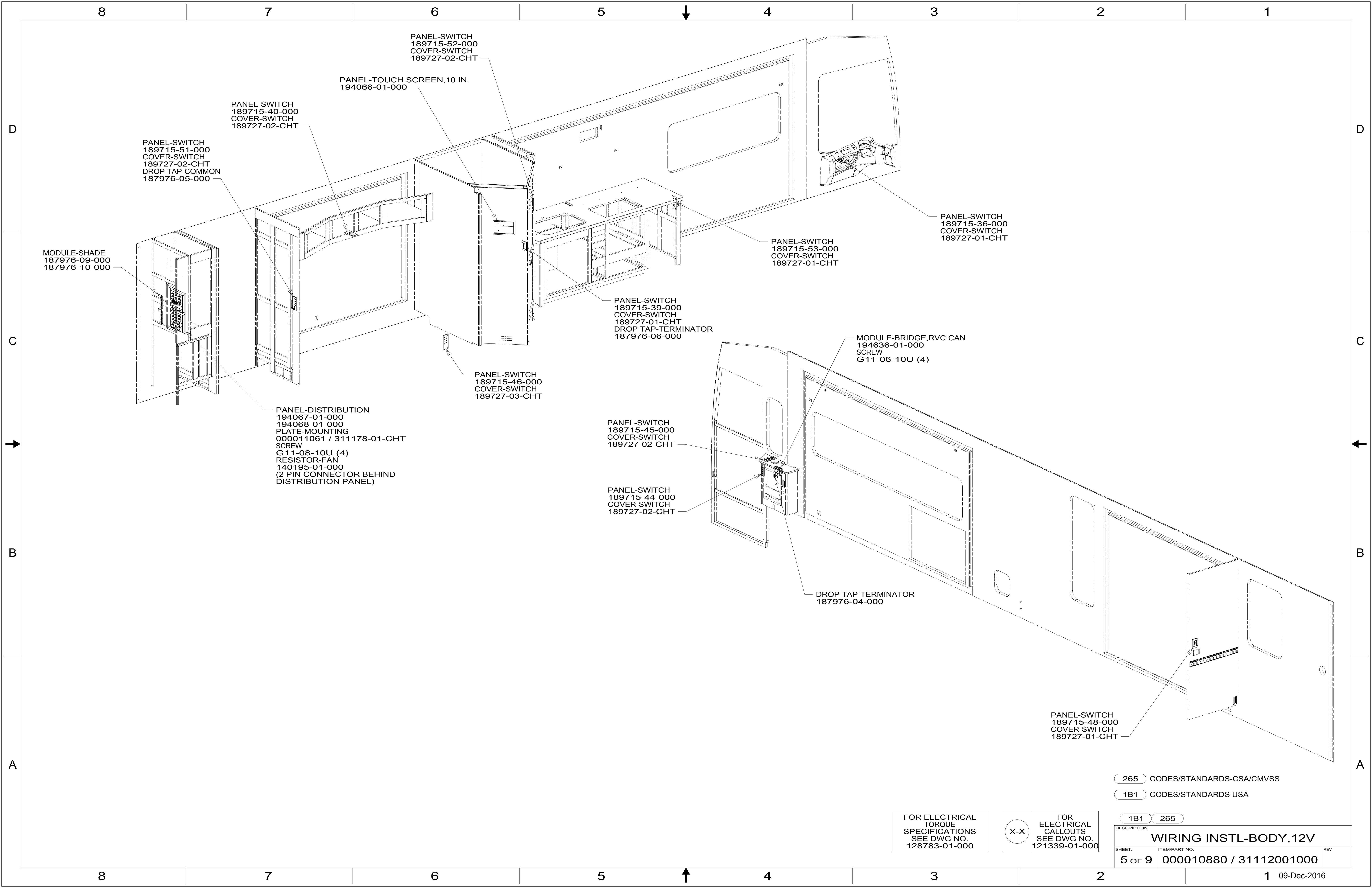
FOR ELECTRICAL TORQUE SPECIFICATIONS SEE DWG NO. 128783-01-000

FOR ELECTRICAL CALLOUTS SEE DWG NO. 121339-01-000

265 CODES/STANDARDS-CSA/CMVSS
1B1 CODES/STANDARDS USA

DESCRIPTION:		1B1 265
WIRING INSTL-BODY, 12V		
SHEET:	ITEM/PART NO.:	REV
4 OF 9	000010880 / 31112001000	

8 7 6 5 4 3 2 1 09-Dec-2016



265 CODES/STANDARDS-CSA/CMVSS

1B1 CODES/STANDARDS USA

1B1 265

FOR ELECTRICAL
TORQUE
SPECIFICATIONS
SEE DWG NO.
128783-01-000

X-X

FOR
ELECTRICAL
CALLOUTS
SEE DWG NO.
121339-01-000

DESCRIPTION:
WIRING INSTL-BODY, 12V

SHEET: 5 OF 9 ITEM/PART NO: 000010880 / 31112001000 REV

8 7 6 5 4 3 2 1

D

D

C

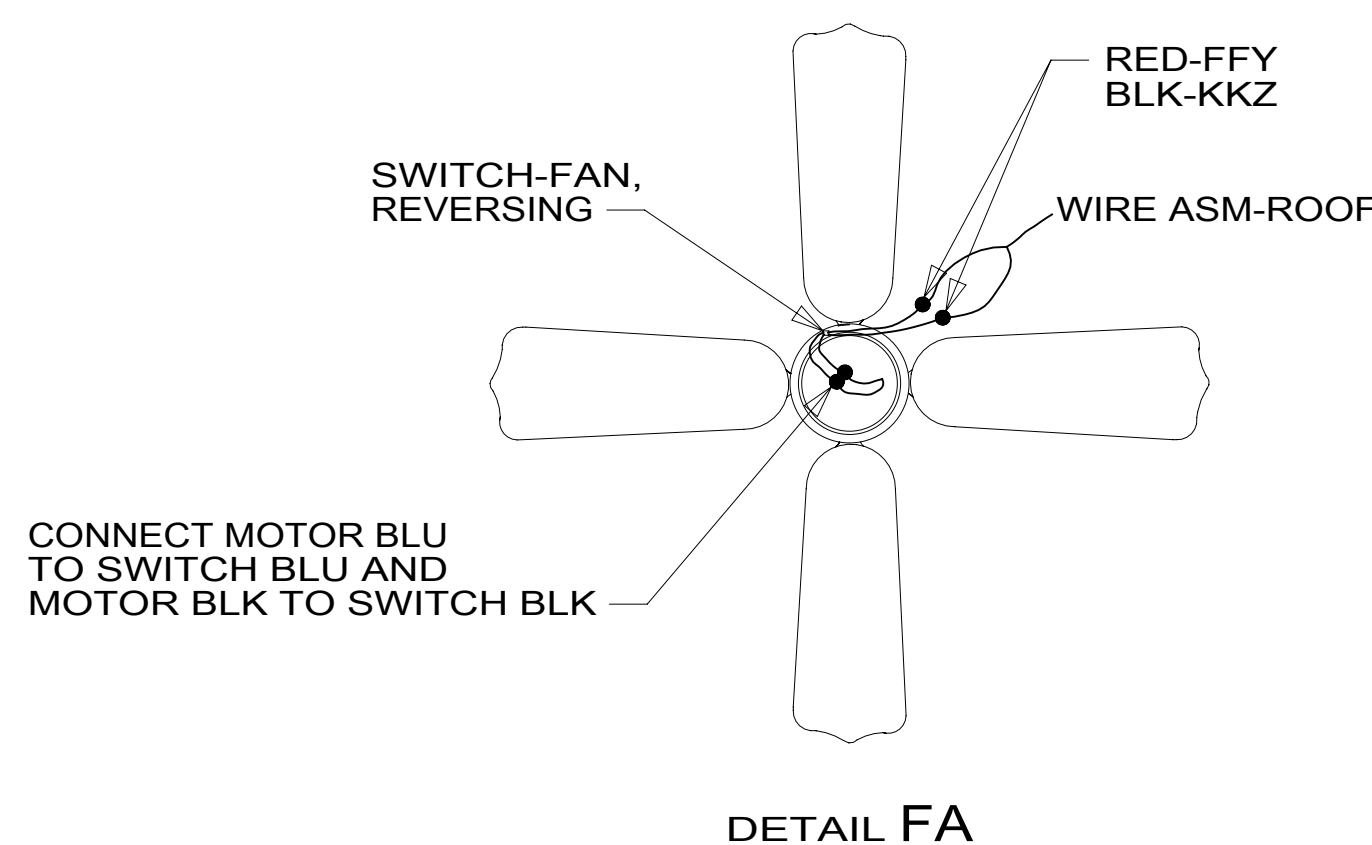
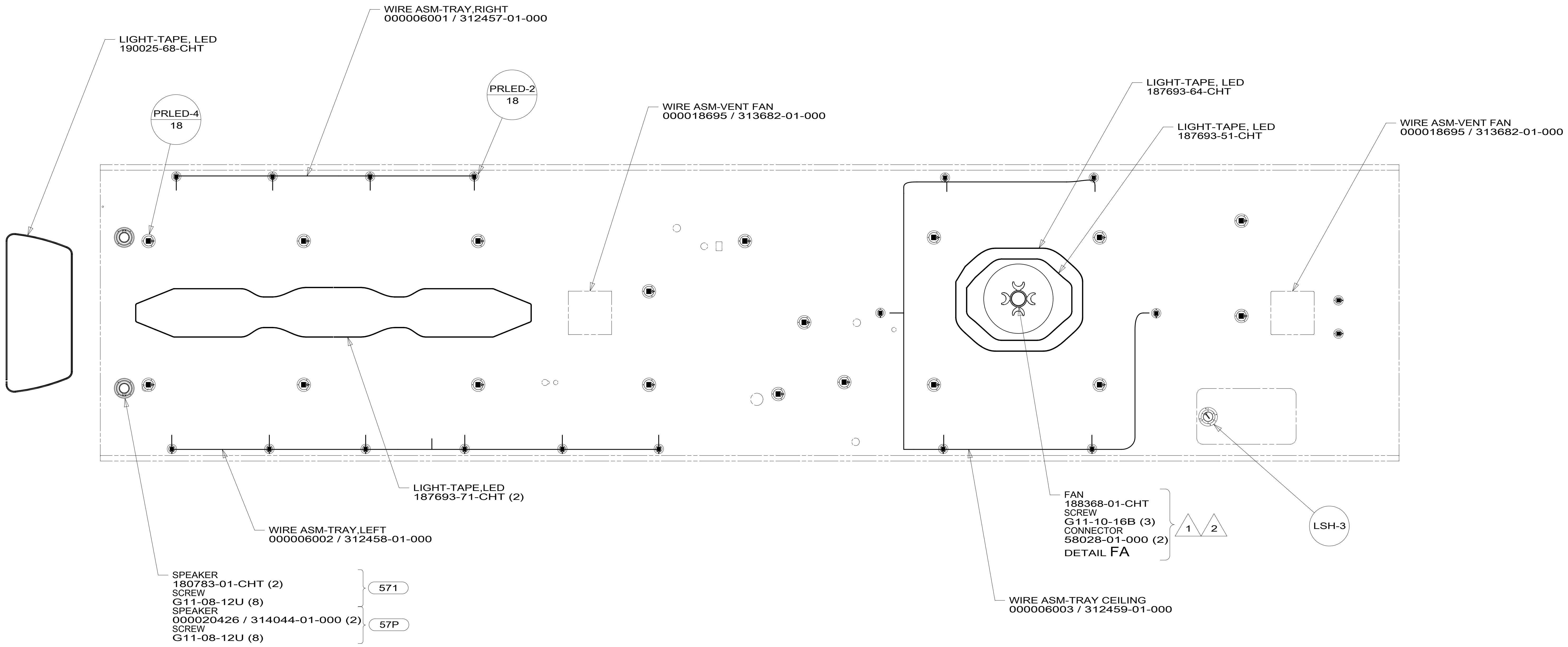
C

B

B

A

A



- NOTES:
- 2 CENTER FAN OVER 25MM HOLE IN ROOF.
 - 1 APPLY LOCTITE P/N 62917-06-000 TO FAN BLADE MOUNTING NUT THREADS.

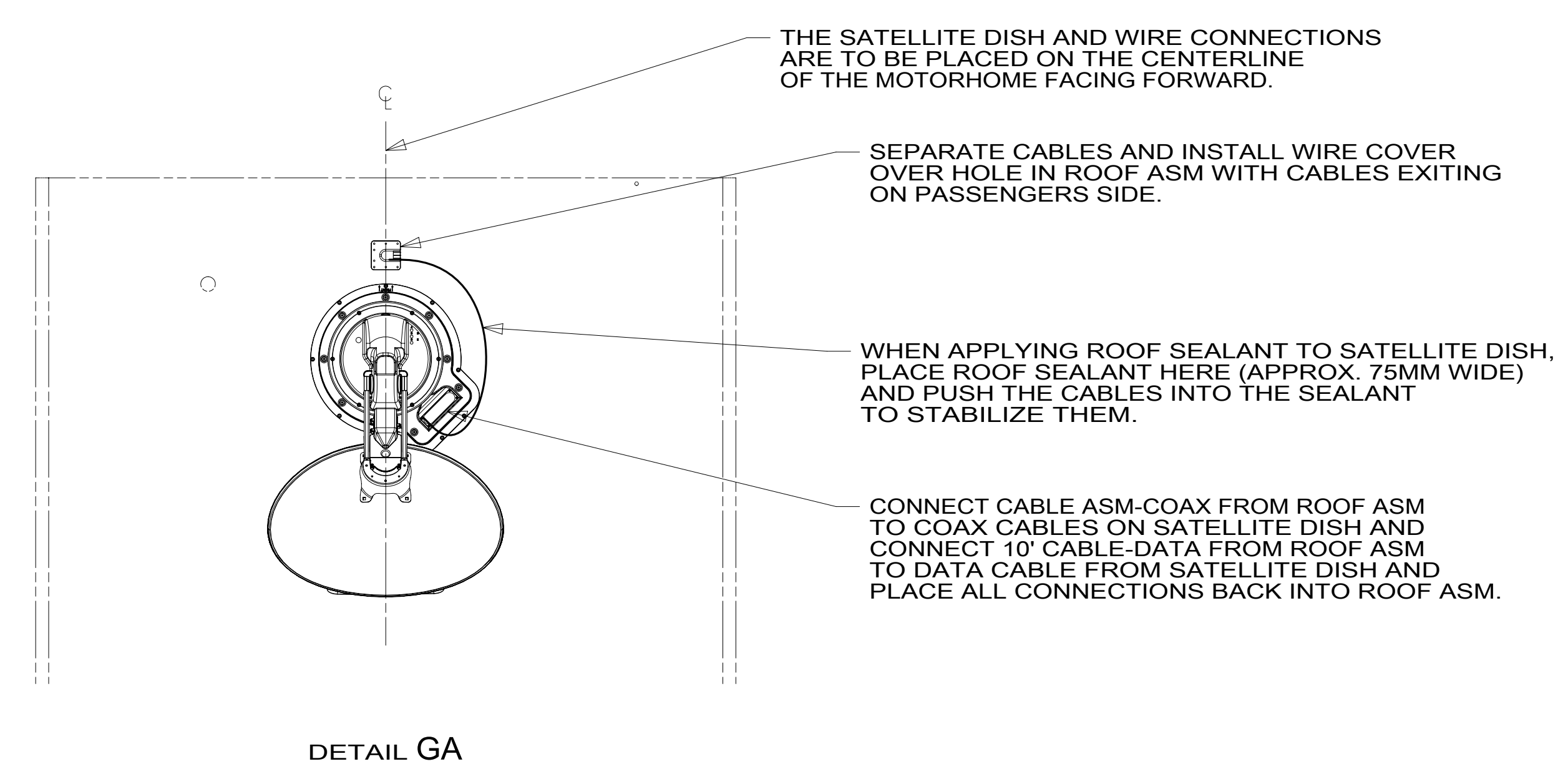
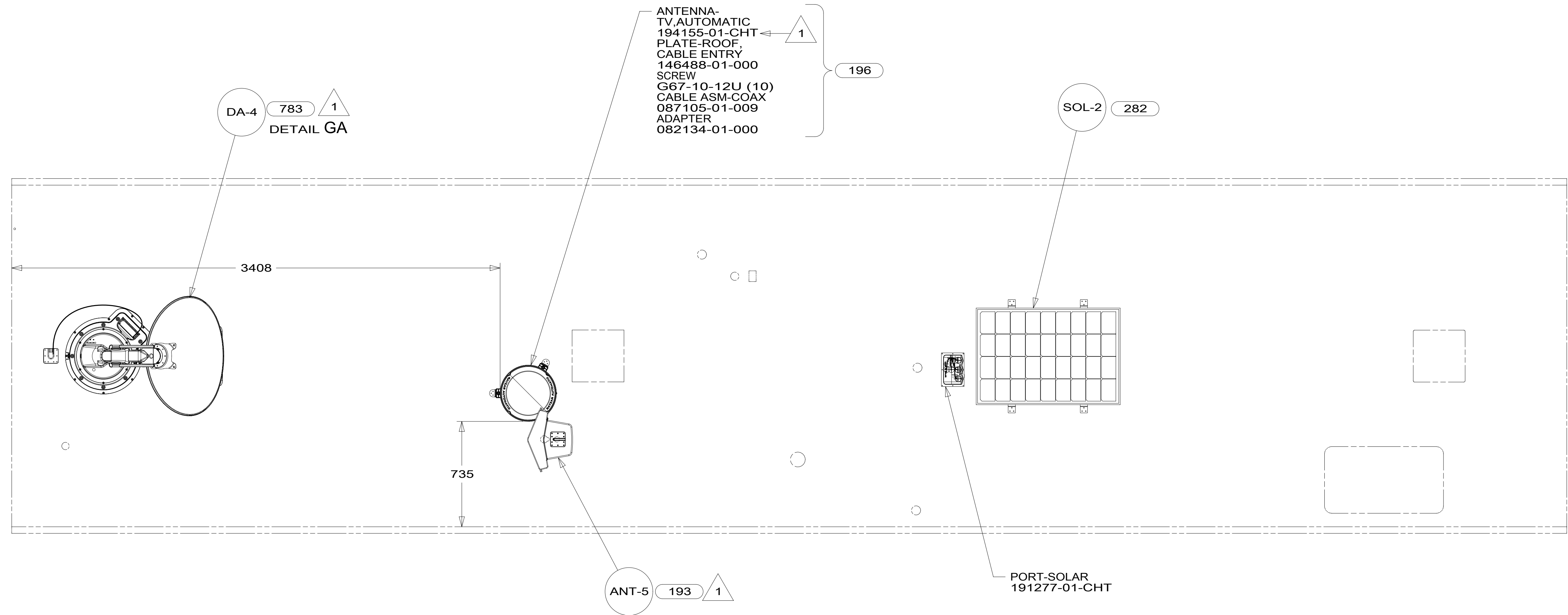
- 57P RADIO SPEAKERS-PREMIUM SOUND
- 571 RADIO SPEAKERS
- 265 CODES/STANDARDS-CSA/CMVSS
- 1B1 CODES/STANDARDS USA

FOR ELECTRICAL TORQUE SPECIFICATIONS SEE DWG NO. 128783-01-000

FOR ELECTRICAL CALLOUTS SEE DWG NO. 121339-01-000

DESCRIPTION: WIRING INSTL-BODY, 12V		
SHEET: 6 OF 9	ITEM/PART NO: 000010880 / 31112001000	REV

8 7 6 5 4 3 2 1 09-Dec-2016



- 196 TV ANT-AUTO,DIRECTIONAL AMPL
- 193 TV ANT-DIGITAL AMPLIFIED
- 783 SATELLITE HD TV SYSTEM AUTOC
- 282 SOLAR PANEL - 100 WATT
- 265 CODES/STANDARDS-CSA/CMVSS
- 1B1 CODES/STANDARDS USA

1 SEE MANUFACTURER'S INSTALLATION FOR ADDITIONAL INFORMATION.

FOR ELECTRICAL TORQUE SPECIFICATIONS SEE DWG NO. 128783-01-000

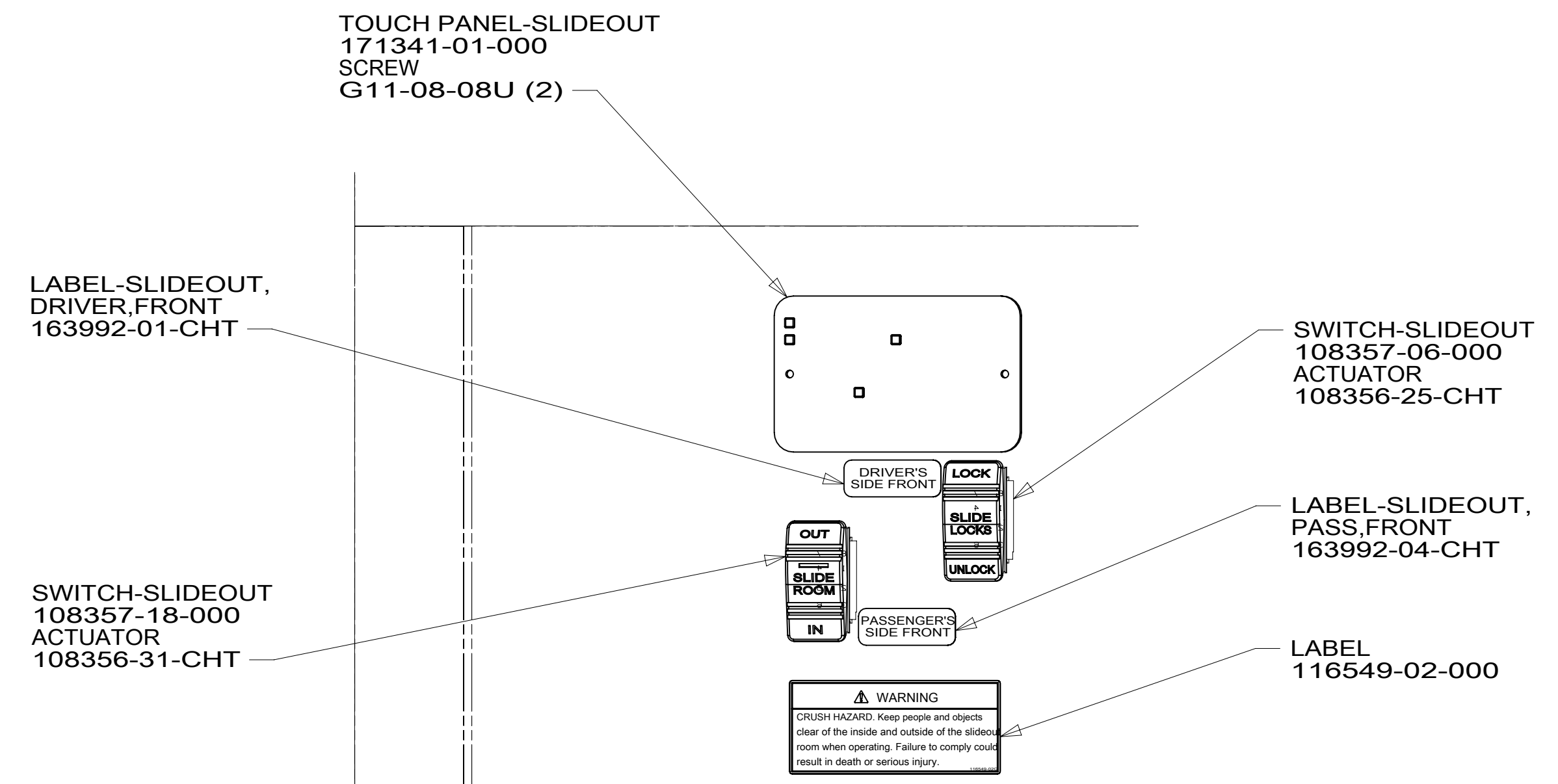
FOR ELECTRICAL CALLOUTS SEE DWG NO. 121339-01-000

DESCRIPTION:	1B1 265	
WIRING INSTL-BODY, 12V		
SHEET:	ITEM/PART NO.:	REV
7 OF 9	000010880 / 31112001000	

8 7 6 5 4 3 2 1

D
C
B
A

D
C
B
A



WARNING
 CRUSH HAZARD: Keep people and objects clear of the inside and outside of the sideroom when operating. Failure to comply could result in death or serious injury.

DETAIL HB

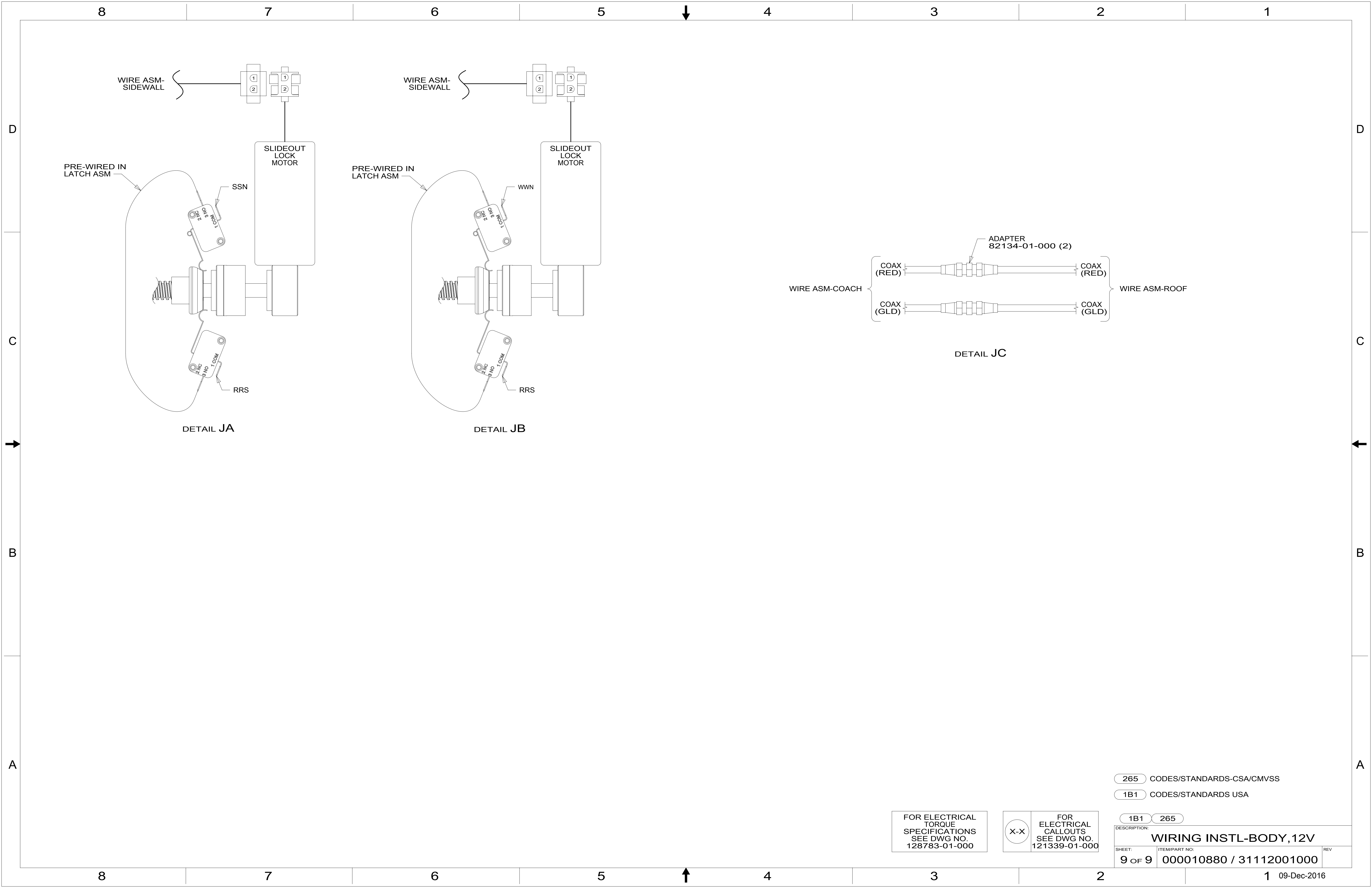
- NOTES:
- 2 SET 'BAT TYPE' TO 'AGM2'
 SET 'LBCO' TO '11VDC'
 SET 'BAT AHRS' TO '600 AH'
 SEE OWNER'S MANUAL FOR SETUP PROCEDURE.
 - 1 SET 'GEN TYPE' TO 'QD 10-12'
 SET 'SAFETY TYPE' TO 'IGNITION'
 SET 'SP SENSE' TO 'AFTER'
 SEE OWNER'S MANUAL FOR SETUP PROCEDURE.

265 CODES/STANDARDS-CSA/CMVSS
 1B1 CODES/STANDARDS USA

FOR ELECTRICAL TORQUE SPECIFICATIONS SEE DWG NO. 128783-01-000

FOR ELECTRICAL CALLOUTS SEE DWG NO. 121339-01-000

DESCRIPTION: WIRING INSTL-BODY, 12V	
SHEET: 8 OF 9	ITEM/PART NO.: 000010880 / 31112001000
REV	



265 CODES/STANDARDS-CSA/CMVSS

1B1 CODES/STANDARDS USA

1B1 265

FOR ELECTRICAL TORQUE SPECIFICATIONS SEE DWG NO. 128783-01-000

X-X

FOR ELECTRICAL CALLOUTS SEE DWG NO. 121339-01-000

DESCRIPTION: WIRING INSTL-BODY, 12V

SHEET: 9 OF 9 ITEM/PART NO: 000010880 / 31112001000 REV

1 09-Dec-2016