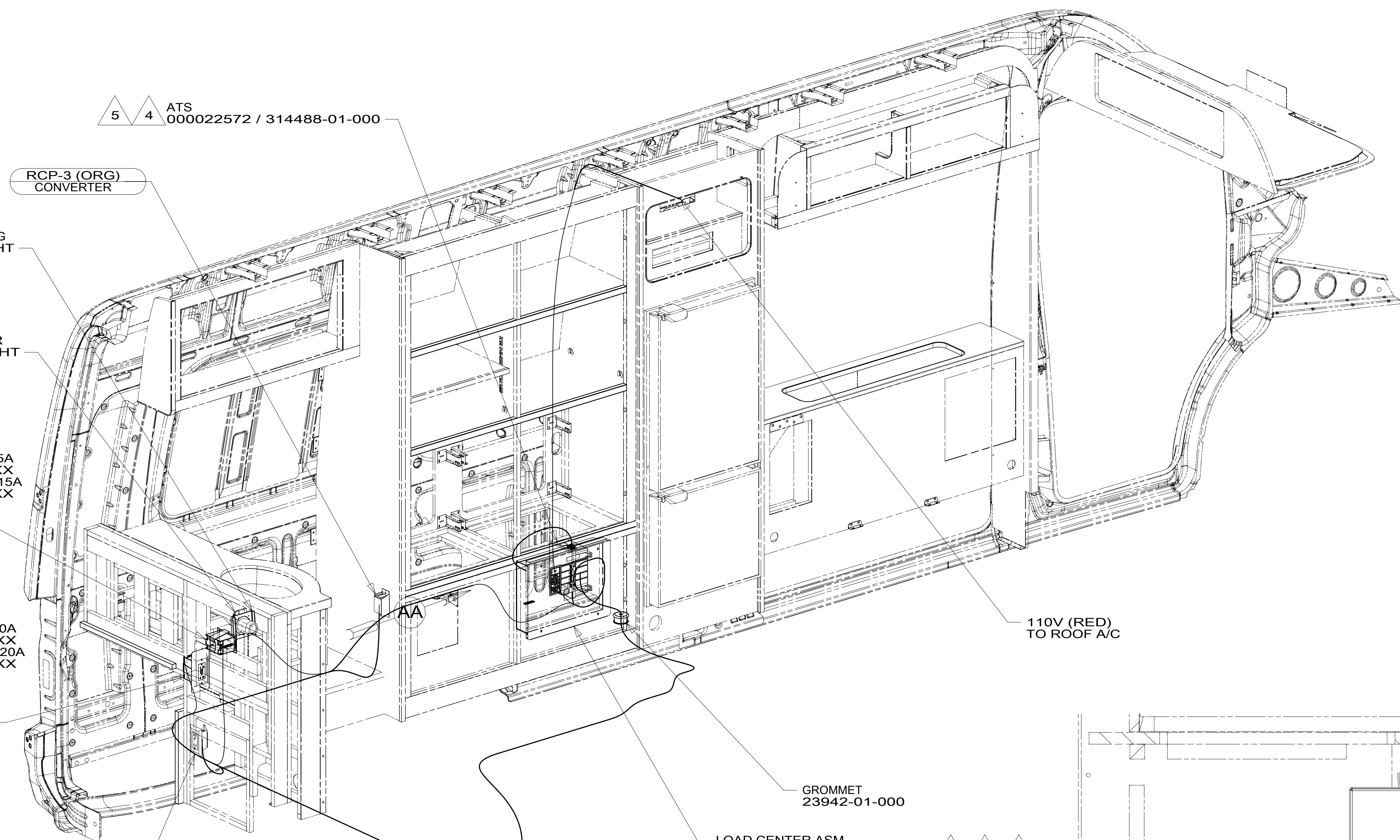


D

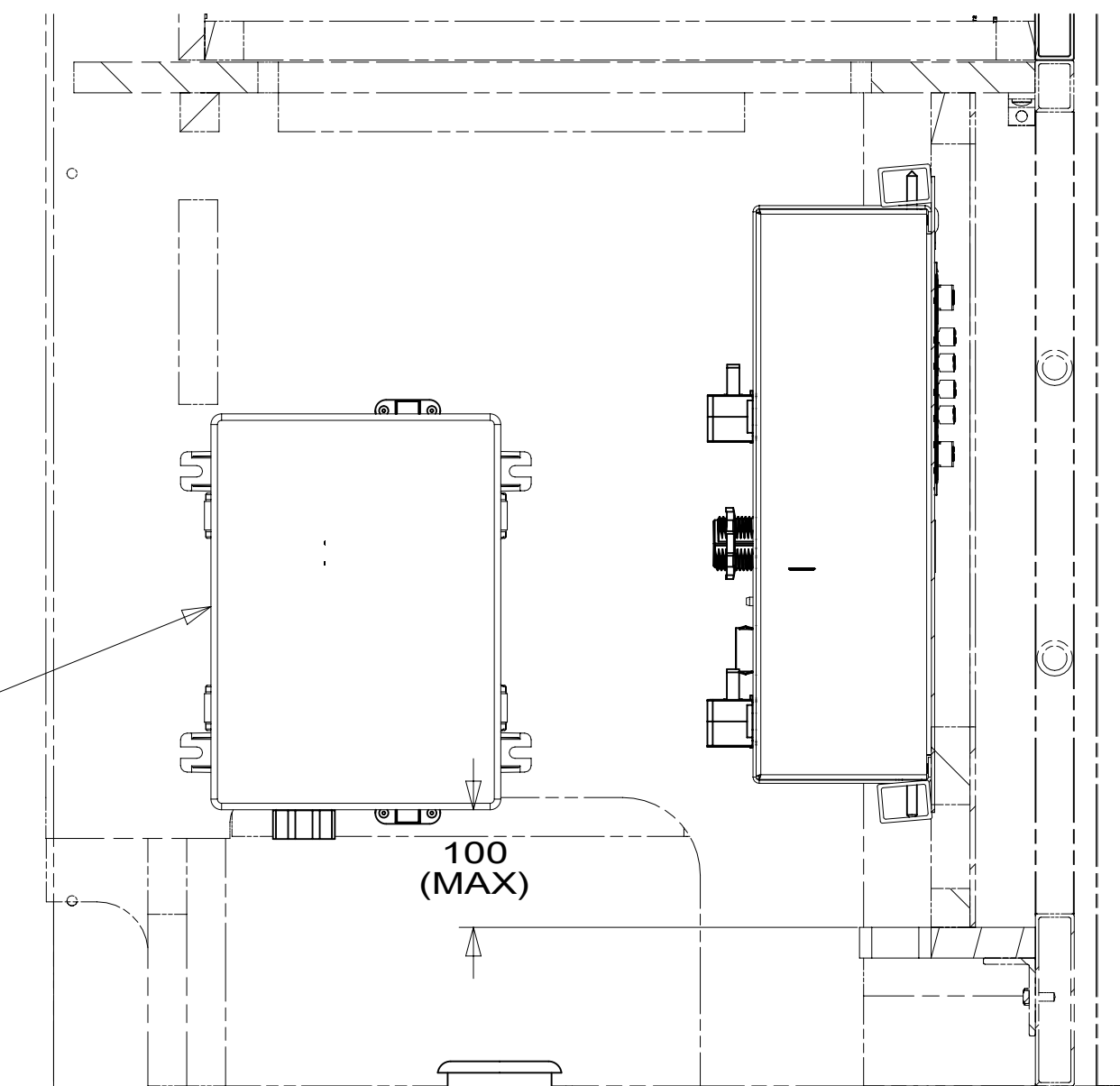
C

B

A



- 5 4 ATS  
000022572 / 314488-01-000
- RCP-3 (ORG)  
CONVERTER
- BRACKET-PLUG  
168924-01-CHT
- INLET-30A,125V,EXTERIOR  
000037518 / 318581-01-CHT
- 1B1 RECEPTACLE ASM-GFI,US-15A  
000120175 / 322736-01-XXX  
265 RECEPTACLE ASM-GFI,CAN-15A  
000120176 / 322737-01-XXX  
(BLU) (LAVATORY)
- 1B1 RECEPTACLE ASM-GFI,US-20A  
000120177 / 322738-01-XXX  
265 RECEPTACLE ASM-GFI,CAN-20A  
000120178 / 322739-01-XXX  
(WHT) (HEATER)  
BRACKET-RCP  
188004-03-CHT  
SCREW  
G67-10-10U (2)
- RCP-2 (BLU)  
TRUNK
- 110V (RED)  
TO ROOF A/C
- GROMMET  
23942-01-000
- LOAD CENTER ASM  
000031817 / 317053-01-000
- TO GENERATOR
- TO RIGHT  
SIDE



VIEW AA

- 5 LOAD CENTER AND ATS GROUND WIRES MUST BE ATTACHED DIRECTLY TO CHASSIS GROUND.
  - 4 GROUND WIRES (8 GA WIRE) FROM LOAD CENTER AND ATS ROUTES THROUGH FLOOR TO GROUND BOLT UNDER DRIVER'S SEAT.
  - 3 SEE SHEET 4 FOR ADDITIONAL INFORMATION.
2. ALL 110V WIRES TO BE CLAMPED WITH CLAMP 10497-05-000 WITHIN 200MM OF OUTLET BOXES, USE SCREW G67-10-12B.
  1. AT MINIMUM ALL WIRES TO BE SUPPORTED AND SECURED PER CODE REQUIREMENTS. USE CLAMP 10495 OR 10497 OR WIRE TIE 8343 OR 108046 AND SCREW G67-XX-XXX OR G56-XX-XXX AS APPROPRIATE FOR INSTALLATION.

NOTES:

FOR ELECTRICAL TORQUE SPECIFICATIONS SEE DWG NO. 128783-01-000

X-X FOR ELECTRICAL CALLOUTS SEE DWG NO. 121339-01-000

- 12D ELECTRICAL SYSTEM 30 AMP
- 265 CODES/STANDARDS-CSA/CMVSS
- 1B1 CODES/STANDARDS USA

1B1 265 12D



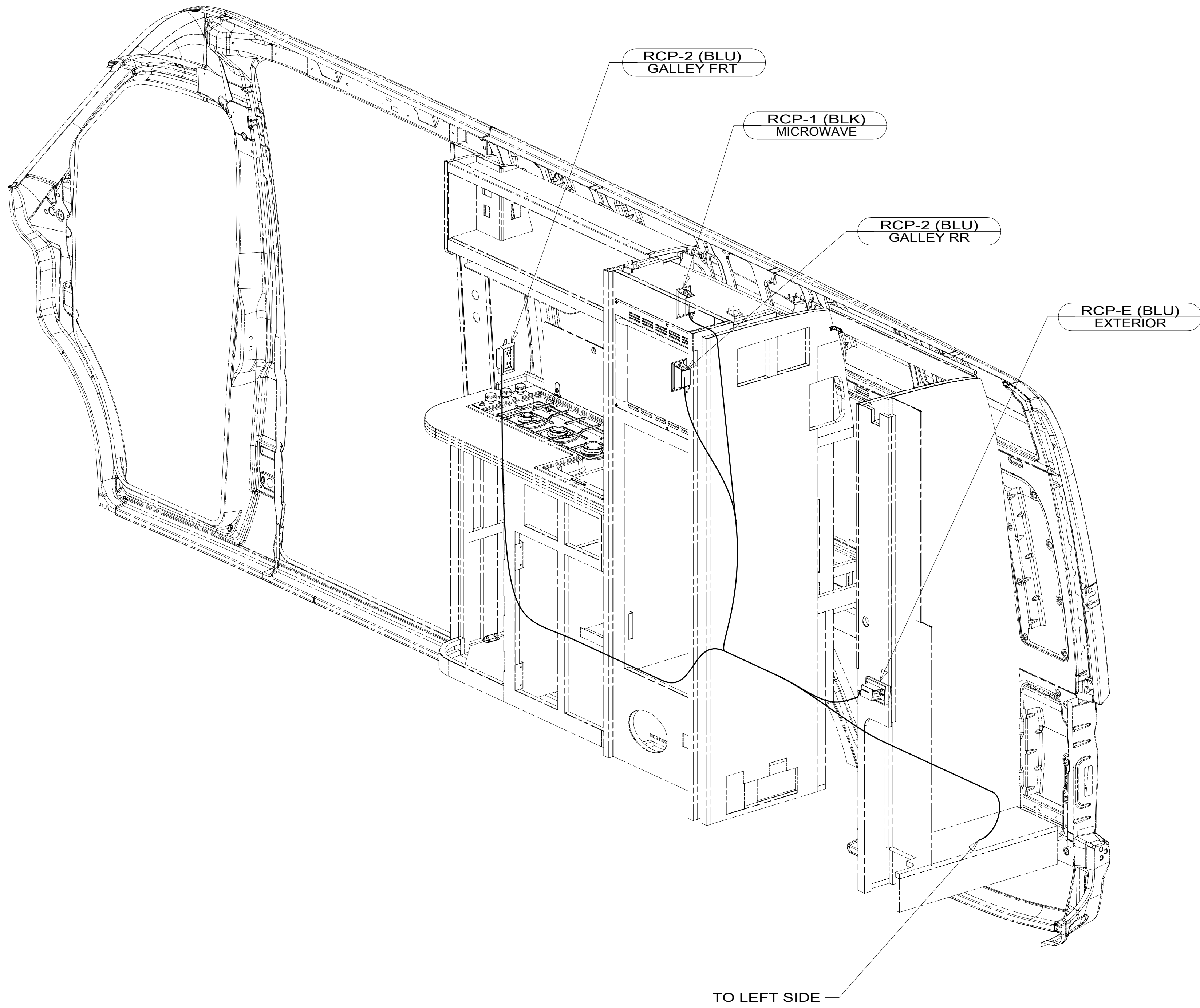
DSNR:	ALL DIMENSIONS ARE IN MILLIMETERS	
DFFR:		
UNSPECIFIED TOLERANCES:	MATERIAL:	
WHOLE DIM (X) : 3		
ONE-PLACE (X.X) : 1.5		
TWO-PLACE (X.XX) : 0.50		
ANGLE : 1°		
REFER TO ES0018 FOR FASTENER TIGHTENING GUIDELINES	WEIGHT: (LBS)	FIRST USED:
		17 170M

**WIRING INSTL-BODY, 110V**

SHEET:	ITEM/PART NO.:	REV:
1 OF 4	000006468 / 31036001000	

8 7 6 5 4 3 2 1

D  
C  
B  
A



- NOTES:
1. AT MINIMUM ALL WIRES TO BE SUPPORTED AND SECURED PER CODE REQUIREMENTS. USE CLAMP 10495 OR 10497 OR WIRE TIE 8343 OR 108046 AND SCREW G67-XX-XXX OR G56-XX-XXX AS APPROPRIATE FOR INSTALLATION.
  2. ALL 110V WIRES TO BE CLAMPED WITH CLAMP 10497-05-000 WITHIN 200MM OF OUTLET BOXES, USE SCREW G67-10-12B.

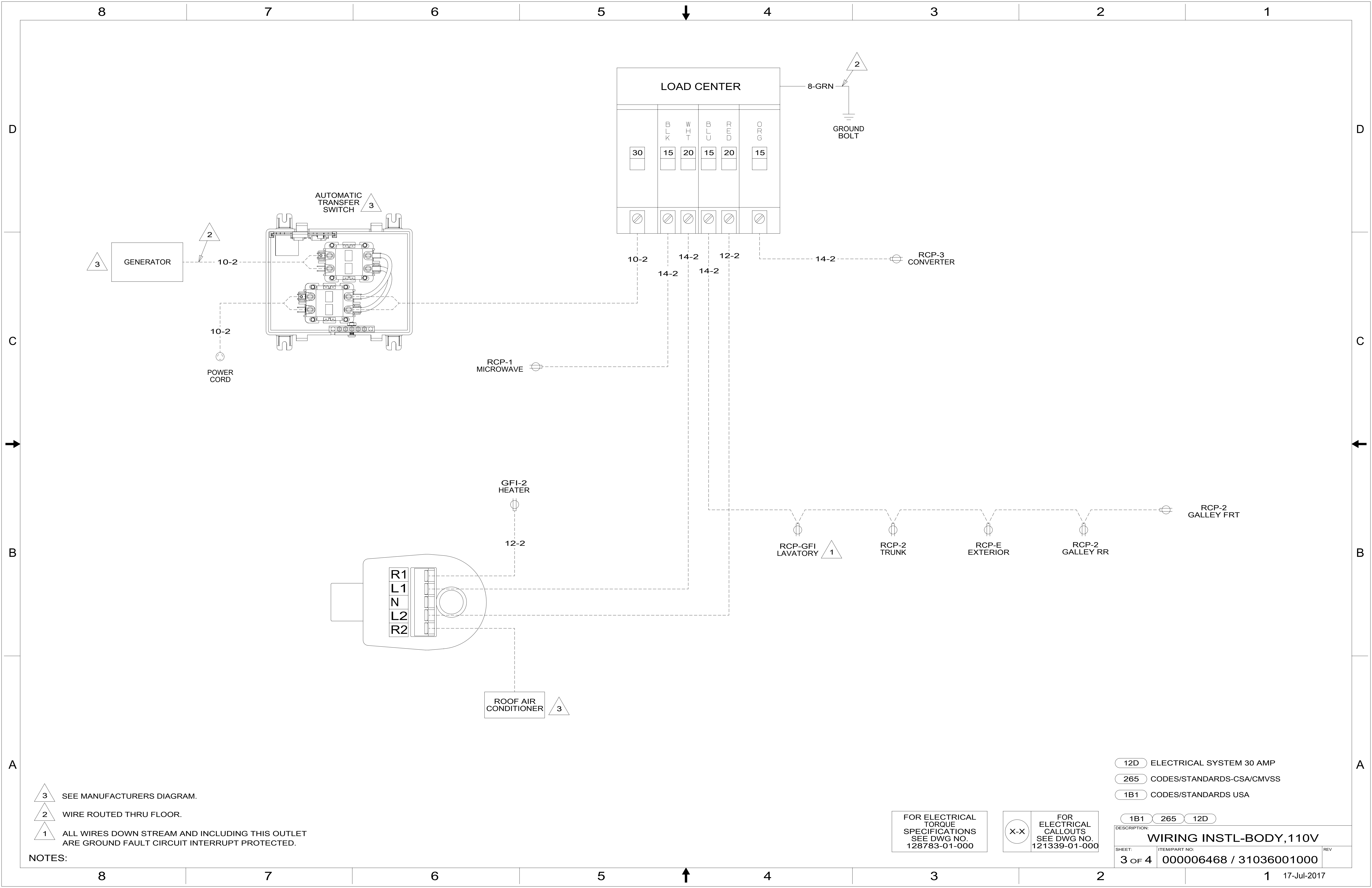
FOR ELECTRICAL TORQUE SPECIFICATIONS SEE DWG NO. 128783-01-000

FOR ELECTRICAL CALLOUTS SEE DWG NO. 121339-01-000

- 12D ELECTRICAL SYSTEM 30 AMP
- 265 CODES/STANDARDS-CSA/CMVSS
- 1B1 CODES/STANDARDS USA

DESCRIPTION:		
<b>WIRING INSTL-BODY, 110V</b>		
SHEET:	ITEM/PART NO.:	REV
2 OF 4	000006468 / 31036001000	

8 7 6 5 4 3 2 1 17-Jul-2017



- NOTES:
- 3 SEE MANUFACTURERS DIAGRAM.
  - 2 WIRE ROUTED THRU FLOOR.
  - 1 ALL WIRES DOWN STREAM AND INCLUDING THIS OUTLET ARE GROUND FAULT CIRCUIT INTERRUPT PROTECTED.

FOR ELECTRICAL TORQUE SPECIFICATIONS SEE DWG NO. 128783-01-000

FOR ELECTRICAL CALLOUTS SEE DWG NO. 121339-01-000

- 12D ELECTRICAL SYSTEM 30 AMP
- 265 CODES/STANDARDS-CSA/CMVSS
- 1B1 CODES/STANDARDS USA

DESCRIPTION: <b>WIRING INSTL-BODY, 110V</b>		
SHEET: 3 OF 4	ITEM/PART NO: 000006468 / 31036001000	REV

8

7

6

5

4

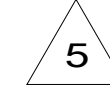
3

2

1



		170C	
RED	1B1	136135-07-040	
	265	136136-07-040	
ORG	1B1	136131-05-040	
	265	136134-05-040	
BLK	1B1	136131-06-090	
	265	136134-06-090	
BLU	1B1	136131-02-175	
	265	136134-02-175	
WHT	1B1	136135-09-045	
	265	136136-09-045	
MAIN	1B1	136137-01-018	
	265	136138-01-018	
GROUND MAIN		136145-05-066	4
MAIN EXTENSION	1B1	136137-01-026	
	265	136138-01-026	
CORD-POWER ASM		183140-01-000	5
GROUND ATS		136145-05-066	4



5 DO NOT HI-POT POWER CORD, LED INDICATOR LIGHT MAY FAIL.

4 GROUND WIRES TO BE INSTALLED ON MFG LINE. SHIP GROUND WIRES LOOSE WITH LOAD CENTER.

3. SEE WIRING INSTL-BODY, 12V FOR ADDITIONAL INFORMATION.

2. SECURE WIRES TO BACKSIDE OF LOAD CENTER WITH WIRE TIE 116673-01-000.

1. ALL GROUNDS WIRES TO BE COVERED WITH TUBING 8041-02-000.

NOTES:

265 CODES/STANDARDS-CSA/CMVSS

1B1 CODES/STANDARDS USA

1B1 265

FOR ELECTRICAL TORQUE SPECIFICATIONS SEE DWG NO. 128783-01-000

FOR ELECTRICAL CALLOUTS SEE DWG NO. 121339-01-000

DESCRIPTION: WIRING INSTL-BODY, 110V

SHEET: 4 OF 4 ITEM/PART NO.: 000006468 / 31036001000 REV

8

7

6

5

4

3

2

1



17-Jul-2017