

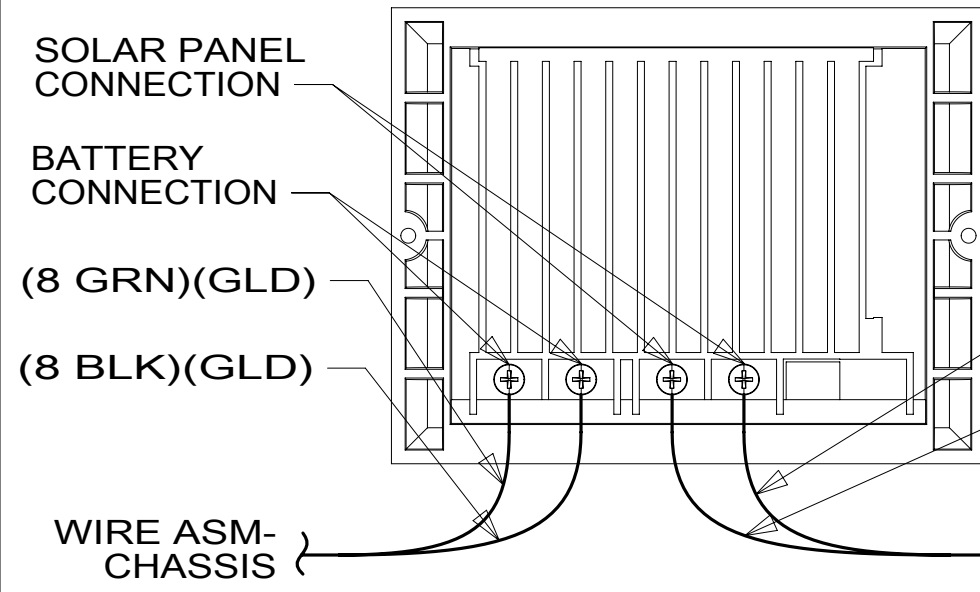
PORT-SOLAR,SINGLE
191558-01-000
CONNECT RED TO HS,
BLK TO HT ON COACH
HARNESS

PANEL-SERVICE
132862-07-CHT
SCREW
G67-10-10U (4)
PANEL-SERVICE
132862-17-CHT
SCREW
G67-10-10U (4)

COAX GLD

COAX RED

PLATE-WALL,COAX
149557-03-CHT
SCREW
G39-08-08U (2)



CONTROL-CHARGE,SOLAR
191278-01-000
SCREW
G39-08-12U (2)

(8 GRN)(GLD)

(8 BLK)(GLD)

(8 BLK)(YEL)

(8 BRN)(YEL)

WIRE ASM-
CHASSIS

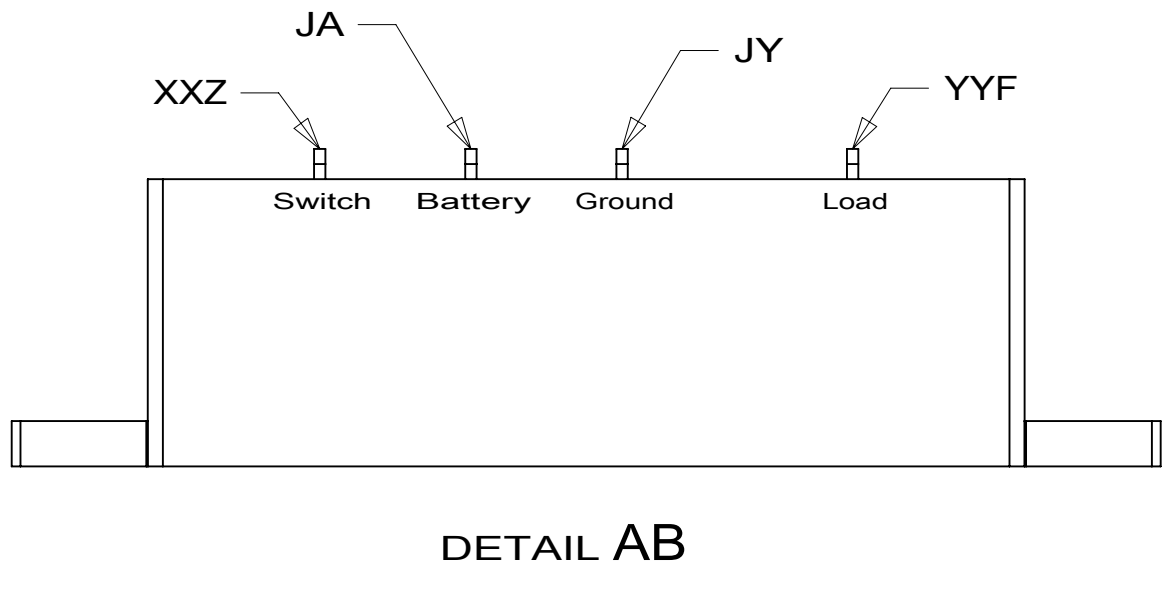
WIRE ASM-
COACH

VIEW AC

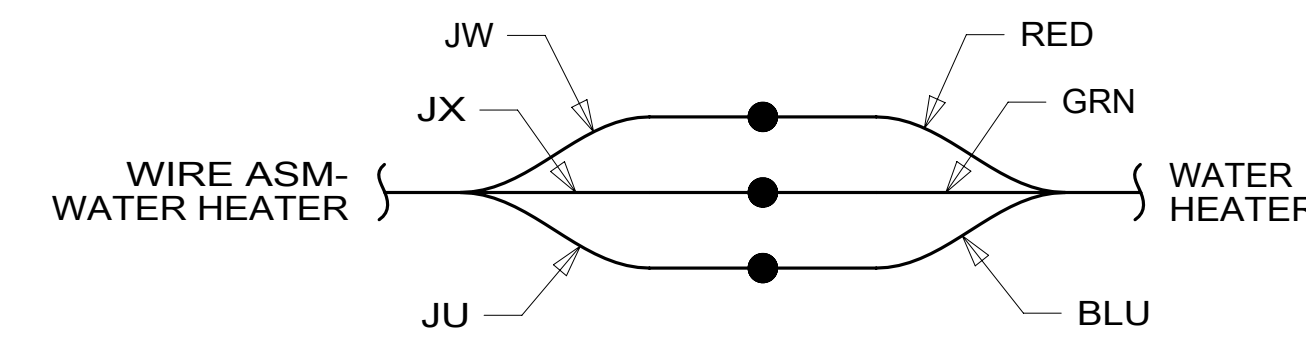
4 NW,WE
TO COMPARTMENT LAMP
COAX (RED)
COAX (GLD)
TO PLATE-WALL,COAX

- 5 WIRE PASSES THROUGH FLOOR AT THIS POINT.
- 4 CONNECT TELEPHONE WIRE TO MATCHING COLORS ON PLATE-WALL, TELEPHONE.
3. ROUTE TANK SENSOR WIRES SO THEY DO NOT PASS OVER SENSORS. USE WIRE TIE MOUNT 155366-01-000 AND WIRE TIE 8343-01-000 AS NEEDED. TANK SURFACE MUST BE CLEANED USING ISOPROPYL ALCOHOL AND PRIME WITH PRIMER 94.
2. SEE WIRING DIAGRAM-BODY, 12V FOR ADDITIONAL INFORMATION.
1. AT MINIMUM ALL WIRES TO BE SUPPORTED AND SECURED PER CODE REQUIREMENTS. USE CLAMP 10495 OR 10497 OR WIRE TIE 8343 OR 108046 AND SCREW G67-XX-XXX OR G56-XX-XXX AS APPROPRIATE FOR INSTALLATION.

NOTES:



DETAIL AB



DETAIL AD 1BT

FOR ELECTRICAL TORQUE SPECIFICATIONS SEE DWG NO. 128783-01-000

FOR ELECTRICAL CALLOUTS SEE DWG NO. 121339-01-000

- 3AA SOLAR PANEL/BATT CHARGER SYS
- 29W SOLAR PANEL/BATTERY CHRG W/O
- 282 SOLAR PANEL - 100 WATT
- 1BT WATER HEATER, TANKLESS
- 265 CODES/STANDARDS-CSA/CMVSS
- 1B1 CODES/STANDARDS USA

1B1 265

WINNEBAGO
COPYRIGHT 2016 WINNEBAGO INDUSTRIES, INC.

DSNR: _____ ALL DIMENSIONS ARE IN MILLIMETERS

DFFR: _____

| | | |
|-------------------------|------|-----------|
| UNSPECIFIED TOLERANCES: | | MATERIAL: |
| WHOLE DIM (X) | 3 | |
| ONE-PLACE (X.X) | 1.5 | |
| TWO-PLACE (X.XX) | 0.50 | |
| ANGLE | 1° | |

REFER TO ES0018 FOR FASTENER TIGHTENING GUIDELINES

WEIGHT: (LBS) _____ FIRST USED: **17 J35P**

DESCRIPTION: **WIRING INSTL-BODY, 12V**

SHEET: **1 OF 8** ITEM/PART NO: **000005210 / 31224901000** REF: _____

A

D

D

C

C

B

B

A

8

7

6

5

4

3

2

1

8

7

6

5

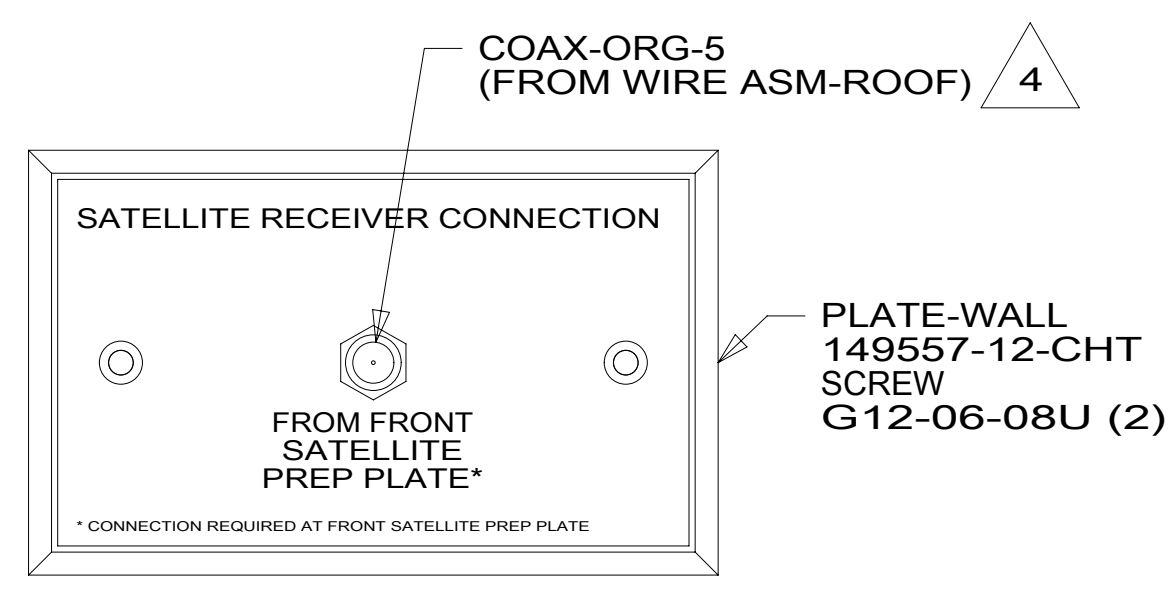
4

3

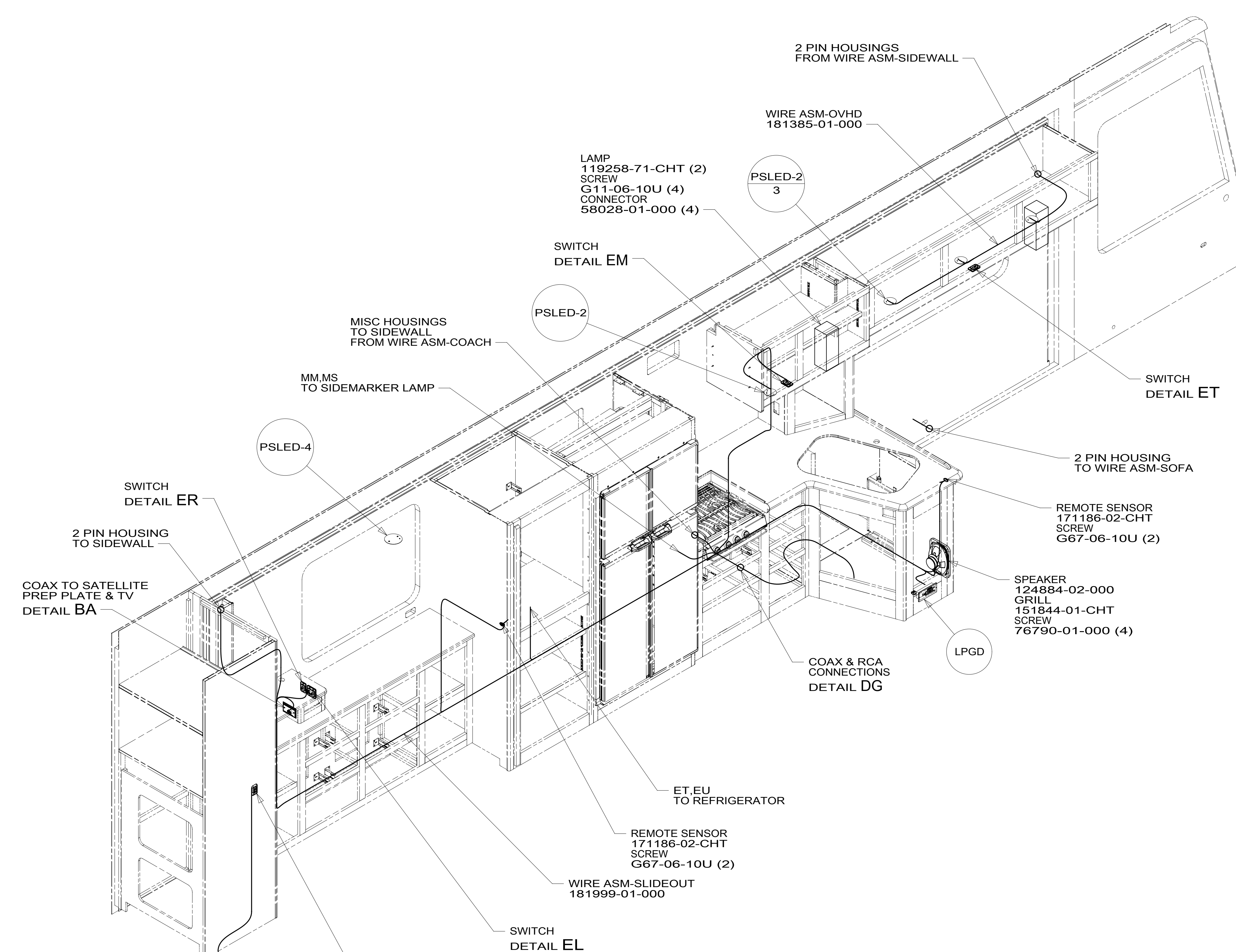
2

1

30-Jan-2017



DETAIL BA



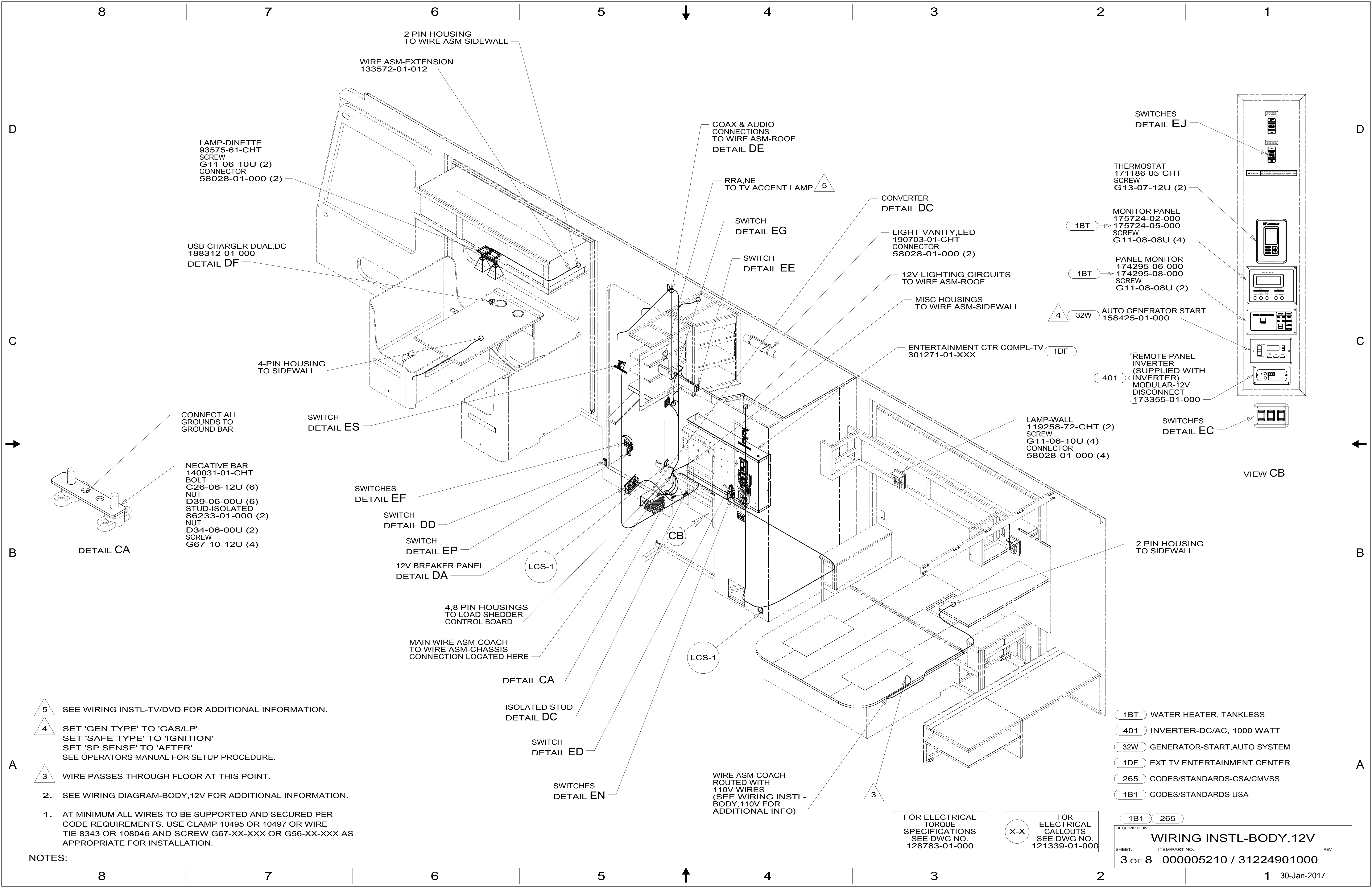
- NOTES:
- 4 CONNECTS TO REAR OF SATELLITE PREP PLATE.
 - 3 WIRE PASSES THROUGH FLOOR AT THIS POINT.
 - 2. SEE WIRING DIAGRAM-BODY, 12V FOR ADDITIONAL INFORMATION.
 - 1. AT MINIMUM ALL WIRES TO BE SUPPORTED AND SECURED PER CODE REQUIREMENTS. USE CLAMP 10495 OR 10497 OR WIRE TIE 8343 OR 108046 AND SCREW G67-XX-XXX OR G56-XX-XXX AS APPROPRIATE FOR INSTALLATION.

FOR ELECTRICAL TORQUE SPECIFICATIONS SEE DWG NO. 128783-01-000

FOR ELECTRICAL CALLOUTS SEE DWG NO. 121339-01-000

- 265 CODES/STANDARDS-CSA/CMVSS
- 1B1 CODES/STANDARDS USA

| | | | |
|-------------------------------|-------------------------|---------|--|
| DESCRIPTION: | | 1B1 265 | |
| WIRING INSTL-BODY, 12V | | | |
| SHEET: | ITEM/PART NO.: | REV: | |
| 2 OF 8 | 000005210 / 31224901000 | | |



LAMP-DINETTE
93575-61-CHT
SCREW
G11-06-10U (2)
CONNECTOR
58028-01-000 (2)

USB-CHARGER DUAL,DC
188312-01-000
DETAIL DF

4-PIN HOUSING
TO SIDEWALL

CONNECT ALL
GROUNDS TO
GROUND BAR

NEGATIVE BAR
140031-01-CHT
BOLT
C26-06-12U (6)
NUT
D39-06-00U (6)
STUD-ISOLATED
86233-01-000 (2)
NUT
D34-06-00U (2)
SCREW
G67-10-12U (4)

DETAIL CA

WIRE ASM-EXTENSION
133572-01-012

2 PIN HOUSING
TO WIRE ASM-SIDEWALL

SWITCH
DETAIL ES

SWITCHES
DETAIL EF

SWITCH
DETAIL DD

SWITCH
DETAIL EP

12V BREAKER PANEL
DETAIL DA

4,8 PIN HOUSINGS
TO LOAD SHEDDER
CONTROL BOARD

MAIN WIRE ASM-COACH
TO WIRE ASM-CHASSIS
CONNECTION LOCATED HERE

DETAIL CA

ISOLATED STUD
DETAIL DC

SWITCH
DETAIL ED

SWITCHES
DETAIL EN

COAX & AUDIO
CONNECTIONS
TO WIRE ASM-ROOF
DETAIL DE

RRA,NE
TO TV ACCENT LAMP 5

SWITCH
DETAIL EG

SWITCH
DETAIL EE

CONVERTER
DETAIL DC

LIGHT-VANITY,LED
190703-01-CHT
CONNECTOR
58028-01-000 (2)

12V LIGHTING CIRCUITS
TO WIRE ASM-ROOF

MISC HOUSINGS
TO WIRE ASM-SIDEWALL

ENTERTAINMENT CTR COMPL-TV
301271-01-XXX 1DF

LAMP-WALL
119258-72-CHT (2)
SCREW
G11-06-10U (4)
CONNECTOR
58028-01-000 (4)

SWITCHES
DETAIL EJ

THERMOSTAT
171186-05-CHT
SCREW
G13-07-12U (2)

MONITOR PANEL
175724-02-000
175724-05-000
SCREW
G11-08-08U (4)

PANEL-MONITOR
174295-06-000
174295-08-000
SCREW
G11-08-08U (2)

401 32W AUTO GENERATOR START
158425-01-000

REMOTE PANEL
INVERTER
(SUPPLIED WITH
INVERTER)
MODULAR-12V
DISCONNECT
173355-01-000

SWITCHES
DETAIL EC

VIEW CB

2 PIN HOUSING
TO SIDEWALL

WIRE ASM-COACH
ROUTED WITH
110V WIRES
(SEE WIRING INSTL-
BODY, 110V FOR
ADDITIONAL INFO)

5 SEE WIRING INSTL-TV/DVD FOR ADDITIONAL INFORMATION.

4 SET 'GEN TYPE' TO 'GAS/LP'
SET 'SAFE TYPE' TO 'IGNITION'
SET 'SP SENSE' TO 'AFTER'
SEE OPERATORS MANUAL FOR SETUP PROCEDURE.

3 WIRE PASSES THROUGH FLOOR AT THIS POINT.

2. SEE WIRING DIAGRAM-BODY, 12V FOR ADDITIONAL INFORMATION.

1. AT MINIMUM ALL WIRES TO BE SUPPORTED AND SECURED PER
CODE REQUIREMENTS. USE CLAMP 10495 OR 10497 OR WIRE
TIE 8343 OR 108046 AND SCREW G67-XX-XXX OR G56-XX-XXX AS
APPROPRIATE FOR INSTALLATION.

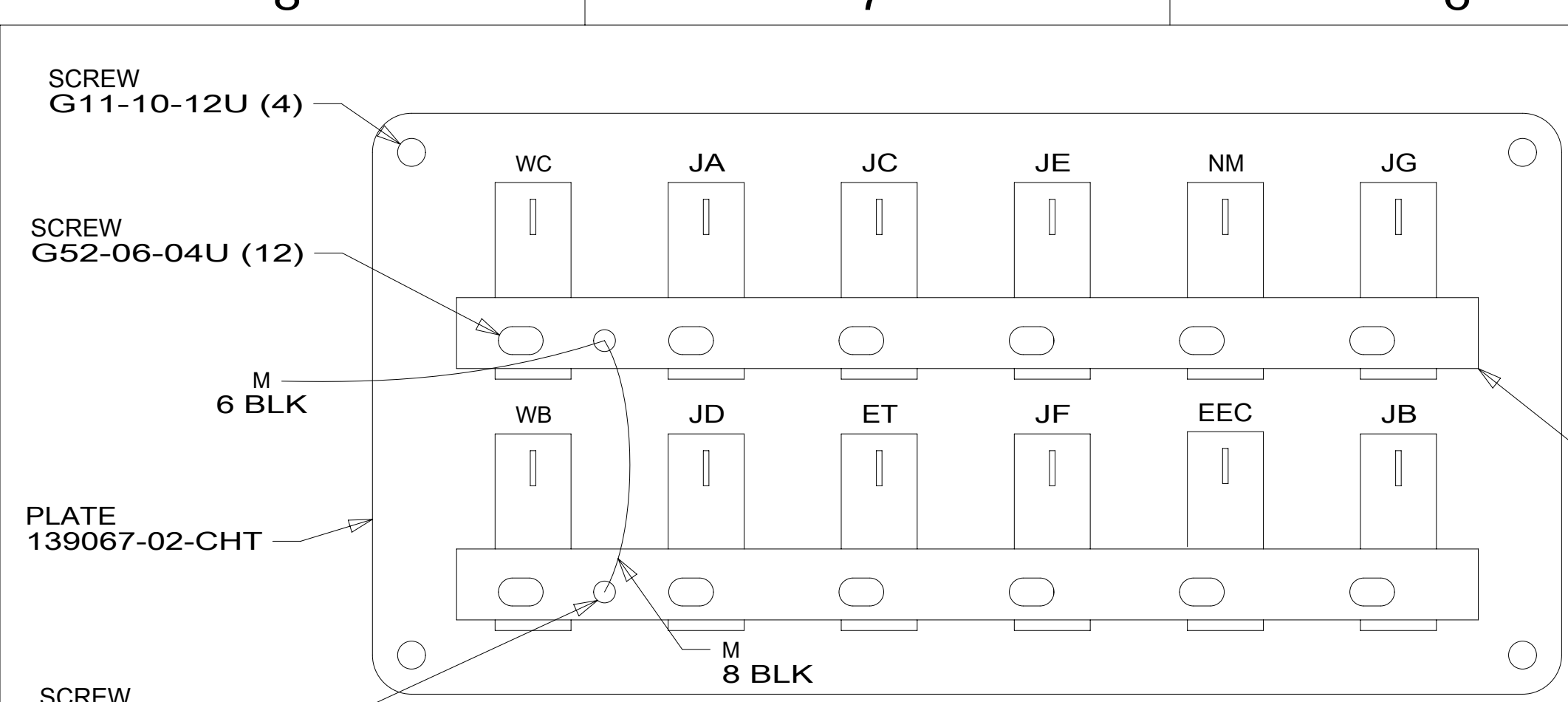
NOTES:

FOR ELECTRICAL
TORQUE
SPECIFICATIONS
SEE DWG NO.
128783-01-000

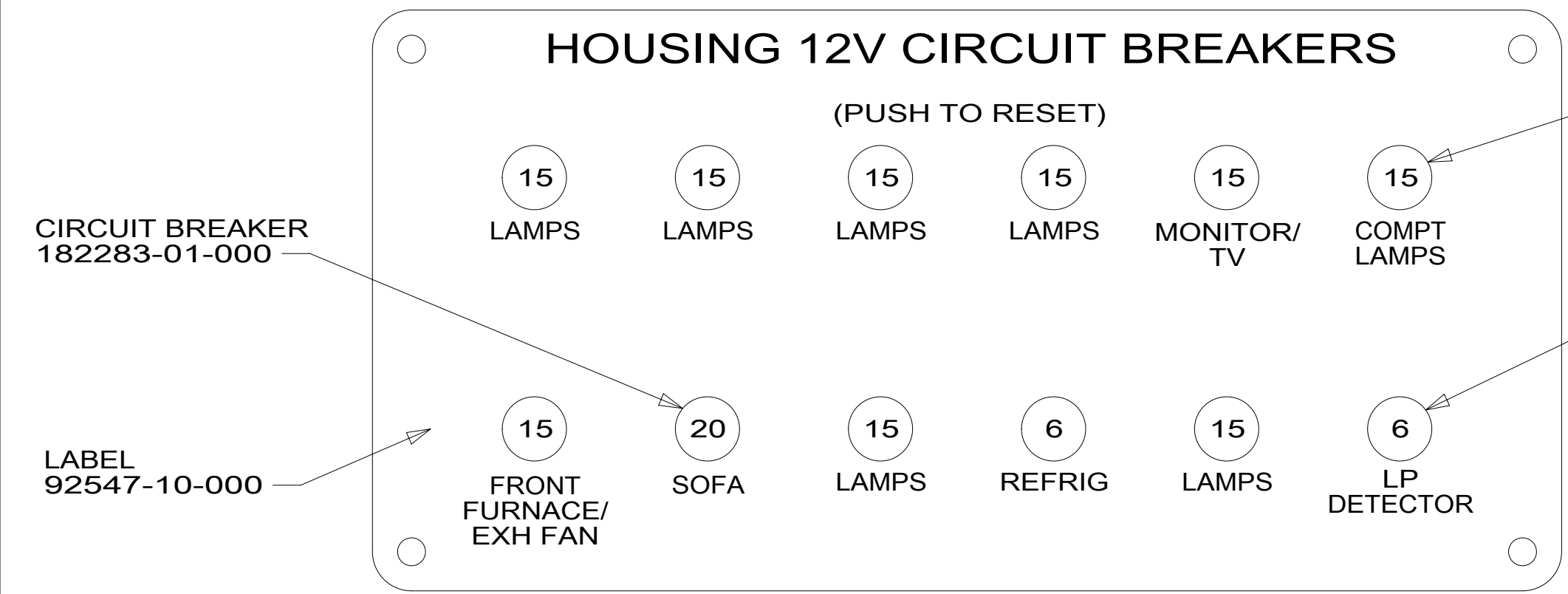
FOR ELECTRICAL
CALLOUTS
SEE DWG NO.
121339-01-000

- 1BT WATER HEATER, TANKLESS
- 401 INVERTER-DC/AC, 1000 WATT
- 32W GENERATOR-START,AUTO SYSTEM
- 1DF EXT TV ENTERTAINMENT CENTER
- 265 CODES/STANDARDS-CSA/CMVSS
- 1B1 CODES/STANDARDS USA

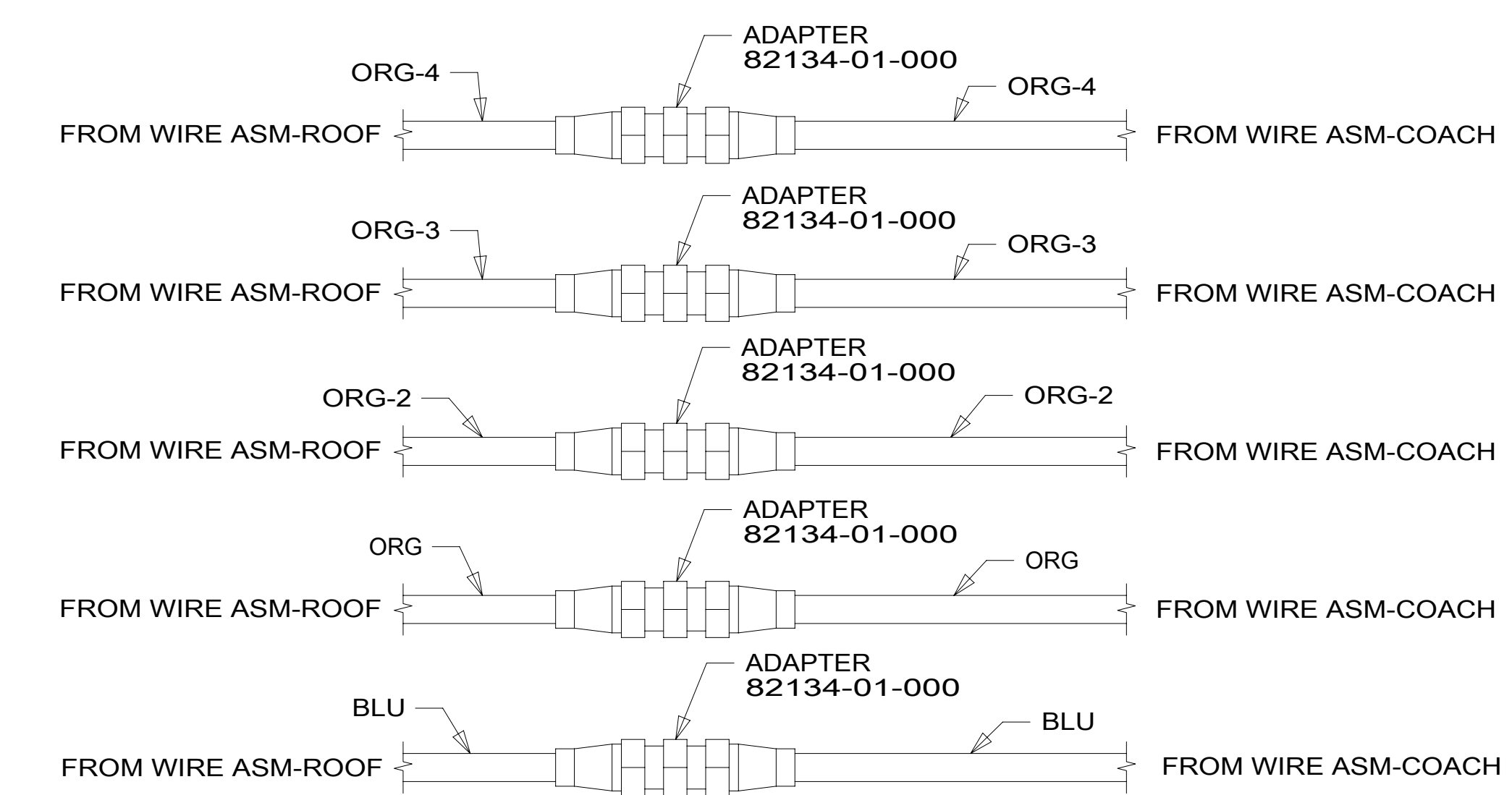
| | |
|---|--|
| DESCRIPTION: WIRING INSTL-BODY, 12V | |
| SHEET: 3 OF 8 | ITEM/PART NO: 000005210 / 31224901000 |
| REV 1 30-Jan-2017 | |



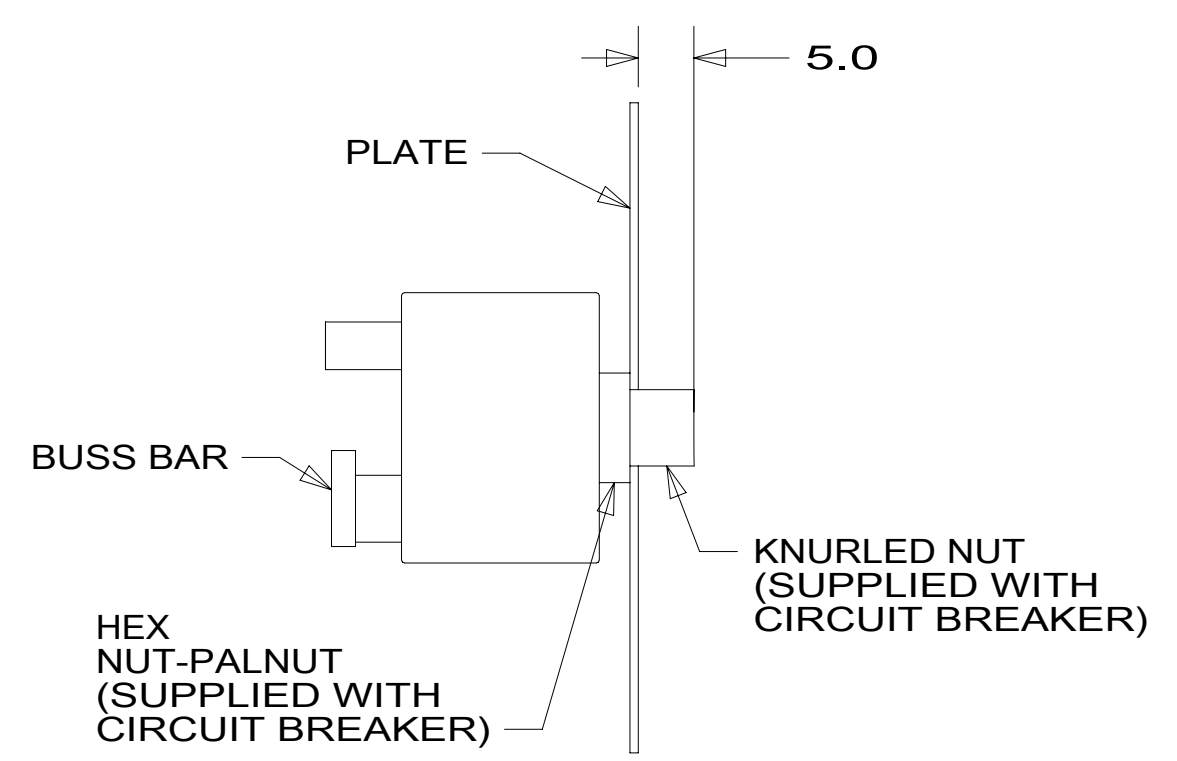
DETAIL DA
(BACK VIEW)



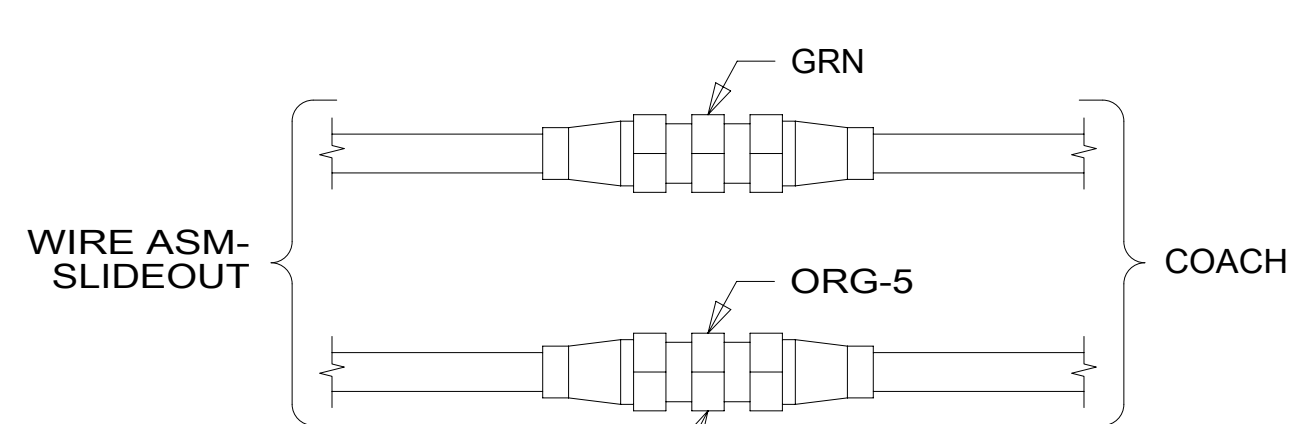
DETAIL DA
(FRONT VIEW)



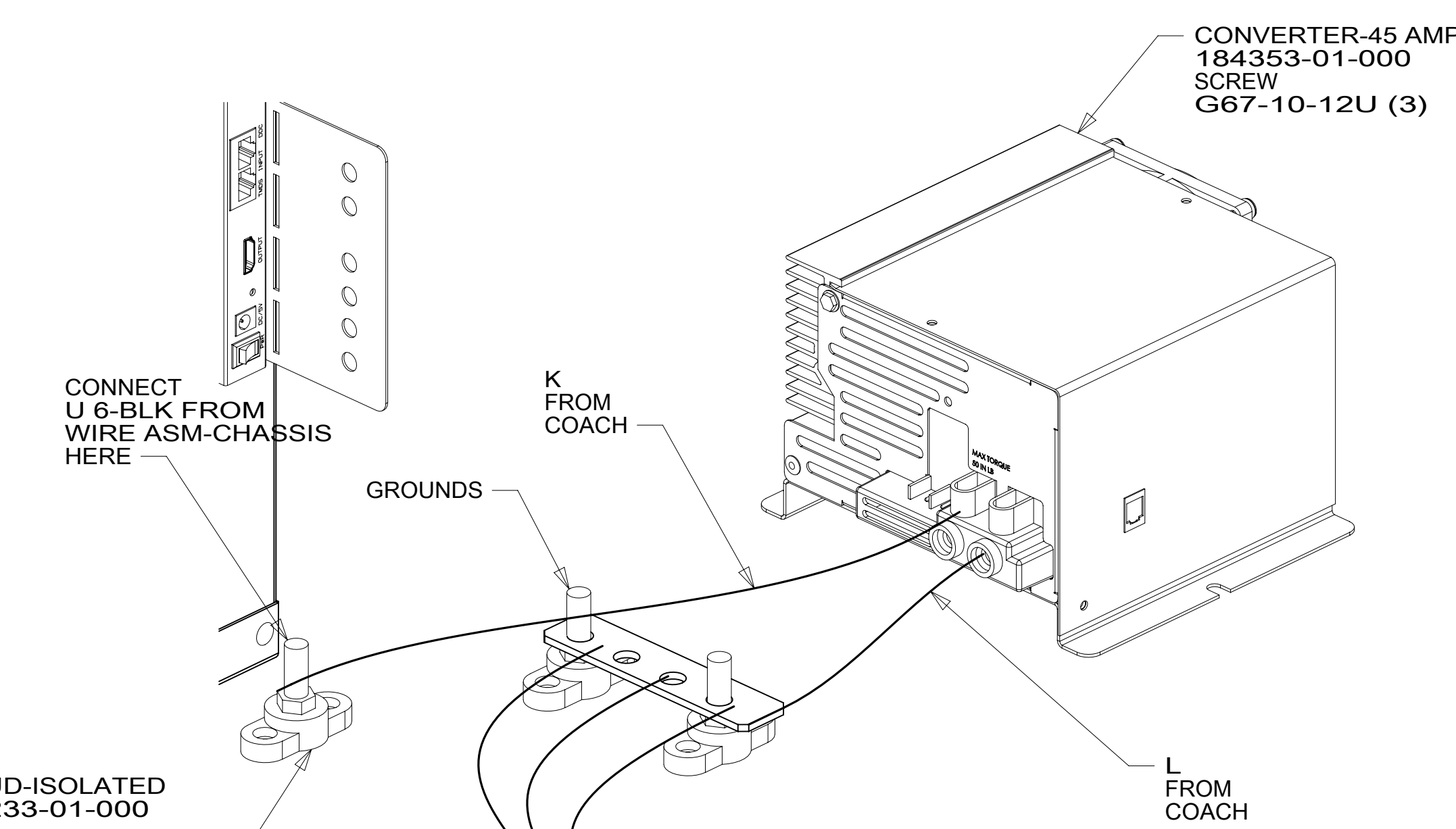
DETAIL DE



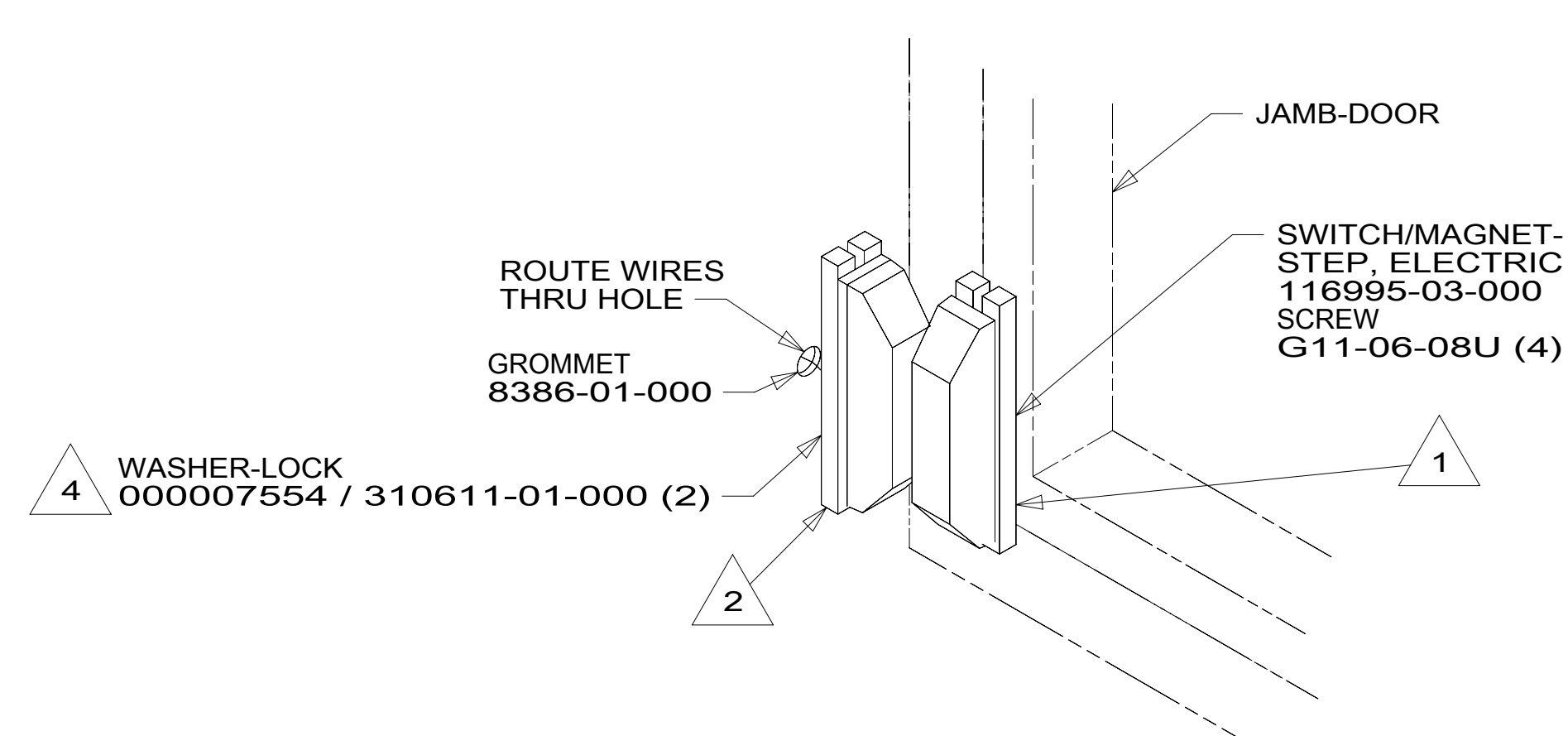
DETAIL DB-DB



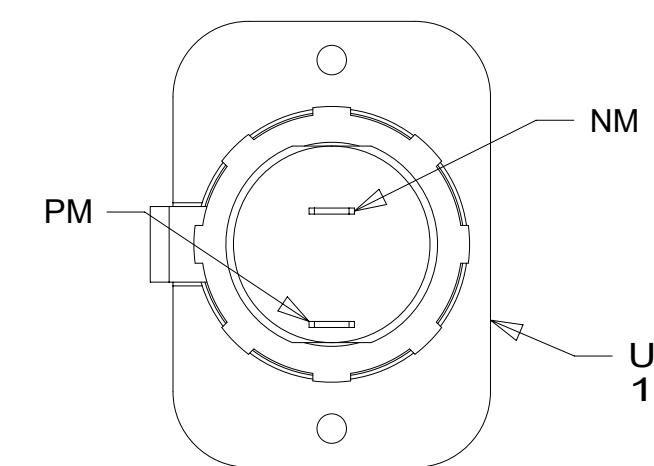
DETAIL DG



DETAIL DC 3



DETAIL DD



DETAIL DF

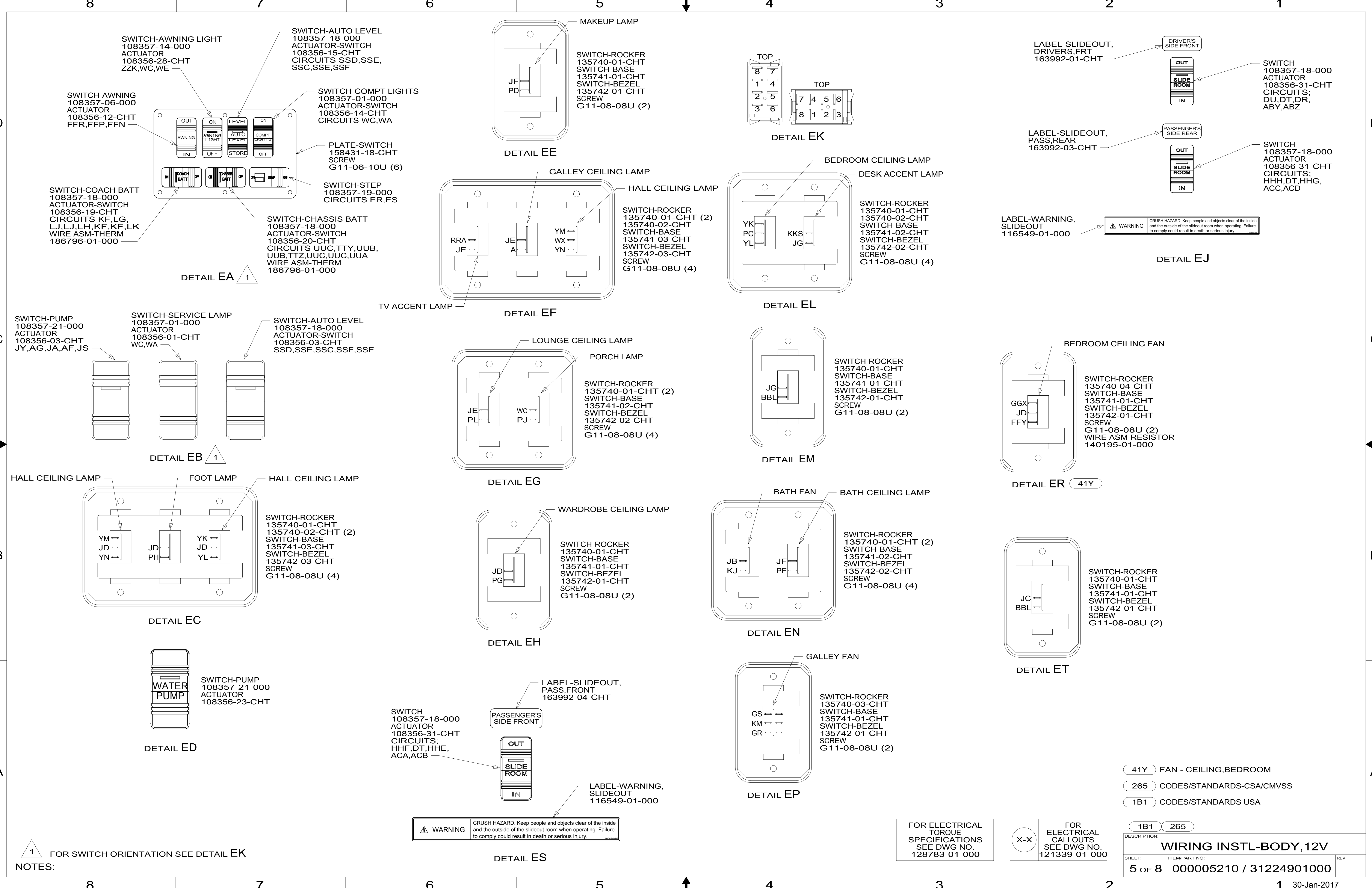
- NOTES:
- 4 REMOVE SCREWS FROM MAGNET SWITCH TO INSTALL LOCK WASHER AND RING TERMINALS.
 - 3 FOR POSITIONING DIMENSIONS SEE WIRING INSTL-BODY, 110V.
 - 2 MOUNT SWITCH AND SPACER TO BLOCK ON JAMB ADJUST HEIGHT TO MATCH MAGNET.
 - 1 MOUNT MAGNET USING PILOT HOLES IN SCREEN DOOR FRAME. MOUNT WITH MAGNET TOWARD SWITCH.

FOR ELECTRICAL TORQUE SPECIFICATIONS SEE DWG NO. 128783-01-000

FOR ELECTRICAL CALLOUTS SEE DWG NO. 121339-01-000

265 CODES/STANDARDS-CSA/CMVSS
1B1 CODES/STANDARDS USA

| | |
|-------------------------------|-------------------------|
| DESCRIPTION: | |
| WIRING INSTL-BODY, 12V | |
| SHEET: | ITEM/PART NO.: |
| 4 OF 8 | 000005210 / 31224901000 |
| REV | |



SWITCH-AWNING LIGHT
108357-14-000
ACTUATOR
108356-28-CHT
ZZK,WC,WE

SWITCH-AUTO LEVEL
108357-18-000
ACTUATOR-SWITCH
108356-15-CHT
CIRCUITS SSD,SSE,
SSC,SSE,SSF

SWITCH-AWNING
108357-06-000
ACTUATOR
108356-12-CHT
FFR,FFP,FFN

SWITCH-COMPT LIGHTS
108357-01-000
ACTUATOR-SWITCH
108356-14-CHT
CIRCUITS WC,WA

SWITCH-ROCKER
135740-01-CHT
SWITCH-BASE
135741-01-CHT
SWITCH-BEZEL
135742-01-CHT
SCREW
G11-08-08U (2)

LABEL-SLIDEOUT,
DRIVERS,FRT
163992-01-CHT

SWITCH
108357-18-000
ACTUATOR
108356-31-CHT
CIRCUITS;
DU,DT,DR,
ABY,ABZ

SWITCH-COACH BATT
108357-18-000
ACTUATOR-SWITCH
108356-19-CHT
CIRCUITS KF,LG,
LJ,LJ,LH,KF,KF,LK
WIRE ASM-THERM
186796-01-000

PLATE-SWITCH
158431-18-CHT
SCREW
G11-06-10U (6)

SWITCH-STEP
108357-19-000
CIRCUITS ER,ES

LABEL-SLIDEOUT,
PASS,REAR
163992-03-CHT

SWITCH
108357-18-000
ACTUATOR
108356-31-CHT
CIRCUITS;
HHH,DT,HHG,
ACC,ACD

DETAIL EA 1

DETAIL EE

DETAIL EK

DETAIL EJ

SWITCH-PUMP
108357-21-000
ACTUATOR
108356-03-CHT
JY,AG,JA,AF,JS

SWITCH-SERVICE LAMP
108357-01-000
ACTUATOR
108356-01-CHT
WC,WA

SWITCH-AUTO LEVEL
108357-18-000
ACTUATOR-SWITCH
108356-03-CHT
SSD,SSE,SSC,SSF,SSE

GALLEY CEILING LAMP

SWITCH-ROCKER
135740-01-CHT (2)
SWITCH-BASE
135741-03-CHT
SWITCH-BEZEL
135742-03-CHT
SCREW
G11-08-08U (4)

BEDROOM CEILING LAMP
DESK ACCENT LAMP

SWITCH-ROCKER
135740-01-CHT
SWITCH-BASE
135741-02-CHT
SWITCH-BEZEL
135742-02-CHT
SCREW
G11-08-08U (4)

LABEL-WARNING,
SLIDEOUT
116549-01-000

CRUSH HAZARD. Keep people and objects clear of the inside and the outside of the slideout room when operating. Failure to comply could result in death or serious injury.

HALL CEILING LAMP

FOOT LAMP

HALL CEILING LAMP

LOUNGE CEILING LAMP

PORCH LAMP

SWITCH-ROCKER
135740-01-CHT (2)
SWITCH-BASE
135741-02-CHT
SWITCH-BEZEL
135742-02-CHT
SCREW
G11-08-08U (4)

SWITCH-ROCKER
135740-01-CHT
SWITCH-BASE
135741-01-CHT
SWITCH-BEZEL
135742-01-CHT
SCREW
G11-08-08U (2)

BEDROOM CEILING FAN

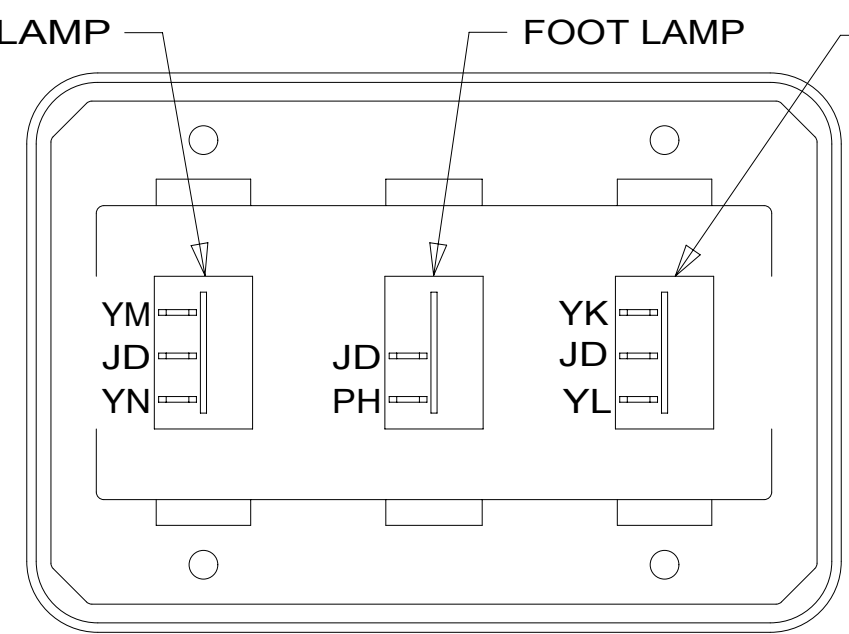
SWITCH-ROCKER
135740-04-CHT
SWITCH-BASE
135741-01-CHT
SWITCH-BEZEL
135742-01-CHT
SCREW
G11-08-08U (2)
WIRE ASM-RESISTOR
140195-01-000

DETAIL EB 1

DETAIL EG

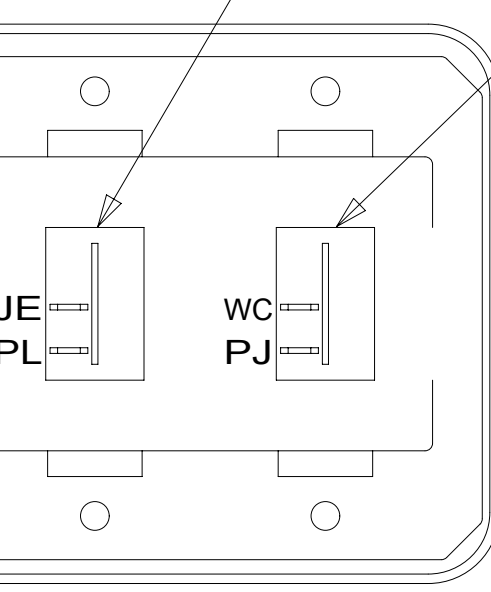
DETAIL EM

DETAIL ER 41Y

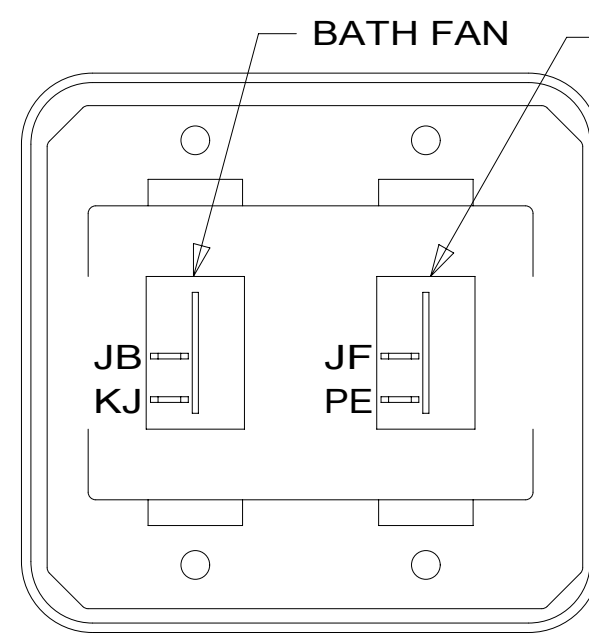


DETAIL EC

SWITCH-ROCKER
135740-01-CHT (2)
SWITCH-BASE
135741-03-CHT
SWITCH-BEZEL
135742-03-CHT
SCREW
G11-08-08U (4)



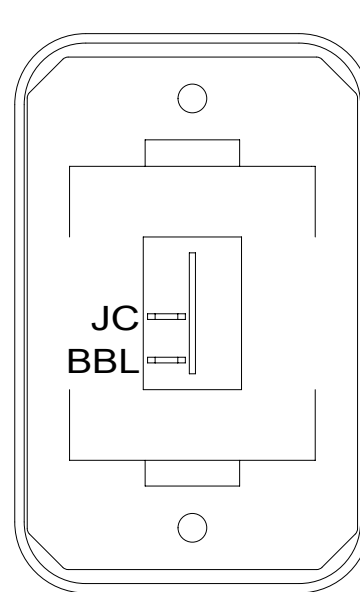
DETAIL EG



DETAIL EN

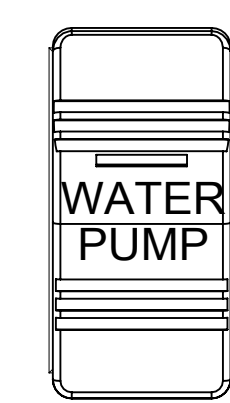
BATH FAN

SWITCH-ROCKER
135740-01-CHT (2)
SWITCH-BASE
135741-02-CHT
SWITCH-BEZEL
135742-02-CHT
SCREW
G11-08-08U (4)



DETAIL ET

SWITCH-ROCKER
135740-01-CHT
SWITCH-BASE
135741-01-CHT
SWITCH-BEZEL
135742-01-CHT
SCREW
G11-08-08U (2)

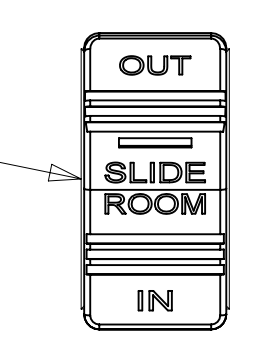


SWITCH-PUMP
108357-21-000
ACTUATOR
108356-23-CHT

DETAIL ED

SWITCH
108357-18-000
ACTUATOR
108356-31-CHT
CIRCUITS;
HHF,DT,HHE,
ACA,ACB

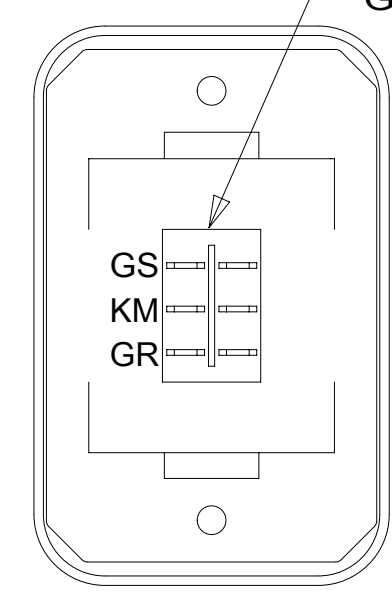
LABEL-SLIDEOUT,
PASS,FRONT
163992-04-CHT



DETAIL ES

LABEL-WARNING,
SLIDEOUT
116549-01-000

CRUSH HAZARD. Keep people and objects clear of the inside and the outside of the slideout room when operating. Failure to comply could result in death or serious injury.



DETAIL EP

GALLEY FAN

SWITCH-ROCKER
135740-03-CHT
SWITCH-BASE
135741-01-CHT
SWITCH-BEZEL
135742-01-CHT
SCREW
G11-08-08U (2)

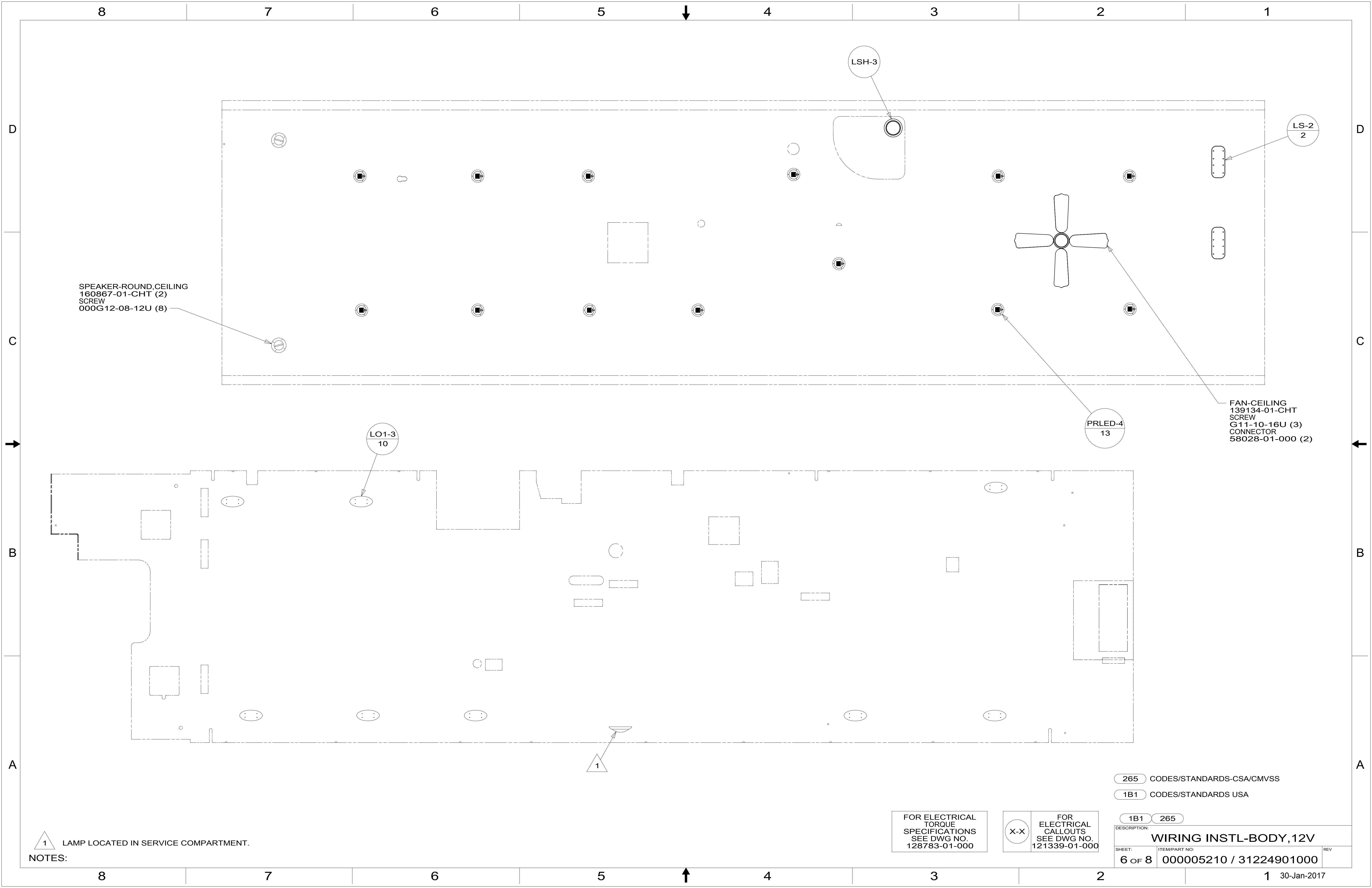
- 41Y FAN - CEILING,BEDROOM
- 265 CODES/STANDARDS-CSA/CMVSS
- 1B1 CODES/STANDARDS USA

FOR ELECTRICAL
TORQUE
SPECIFICATIONS
SEE DWG NO.
128783-01-000

FOR ELECTRICAL
CALLOUTS
SEE DWG NO.
121339-01-000

| | | |
|--------------|-------------------------|-----|
| DESCRIPTION: | WIRING INSTL-BODY, 12V | |
| SHEET: | ITEM/PART NO: | REV |
| 5 OF 8 | 000005210 / 31224901000 | |

NOTES:
1 FOR SWITCH ORIENTATION SEE DETAIL EK



SPEAKER-ROUND, CEILING
160867-01-CHT (2)
SCREW
000G12-08-12U (8)

LSH-3

LS-2
2

PRLED-4
13

LO1-3
10

FAN-CEILING
139134-01-CHT
SCREW
G11-10-16U (3)
CONNECTOR
58028-01-000 (2)

1 LAMP LOCATED IN SERVICE COMPARTMENT.

NOTES:

FOR ELECTRICAL
TORQUE
SPECIFICATIONS
SEE DWG NO.
128783-01-000

FOR
ELECTRICAL
CALLOUTS
SEE DWG NO.
121339-01-000

265 CODES/STANDARDS-CSA/CMVSS

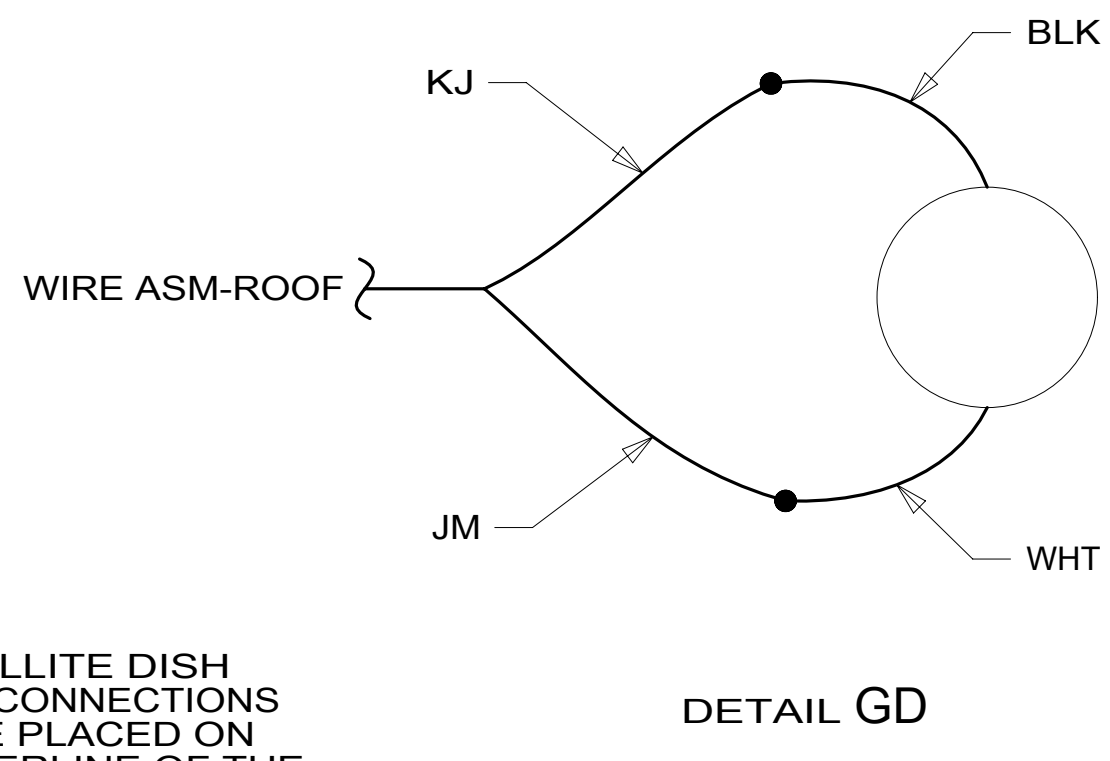
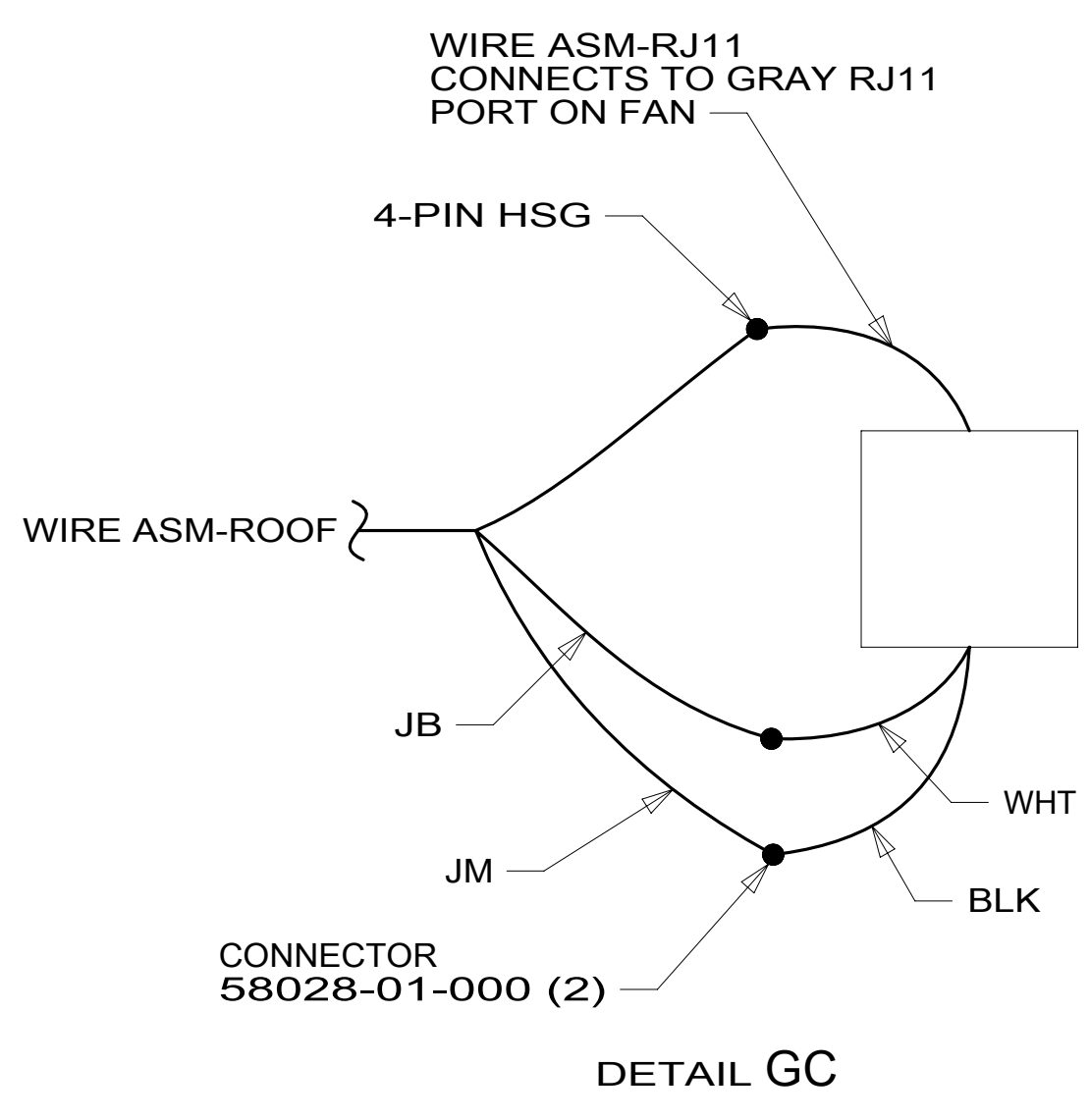
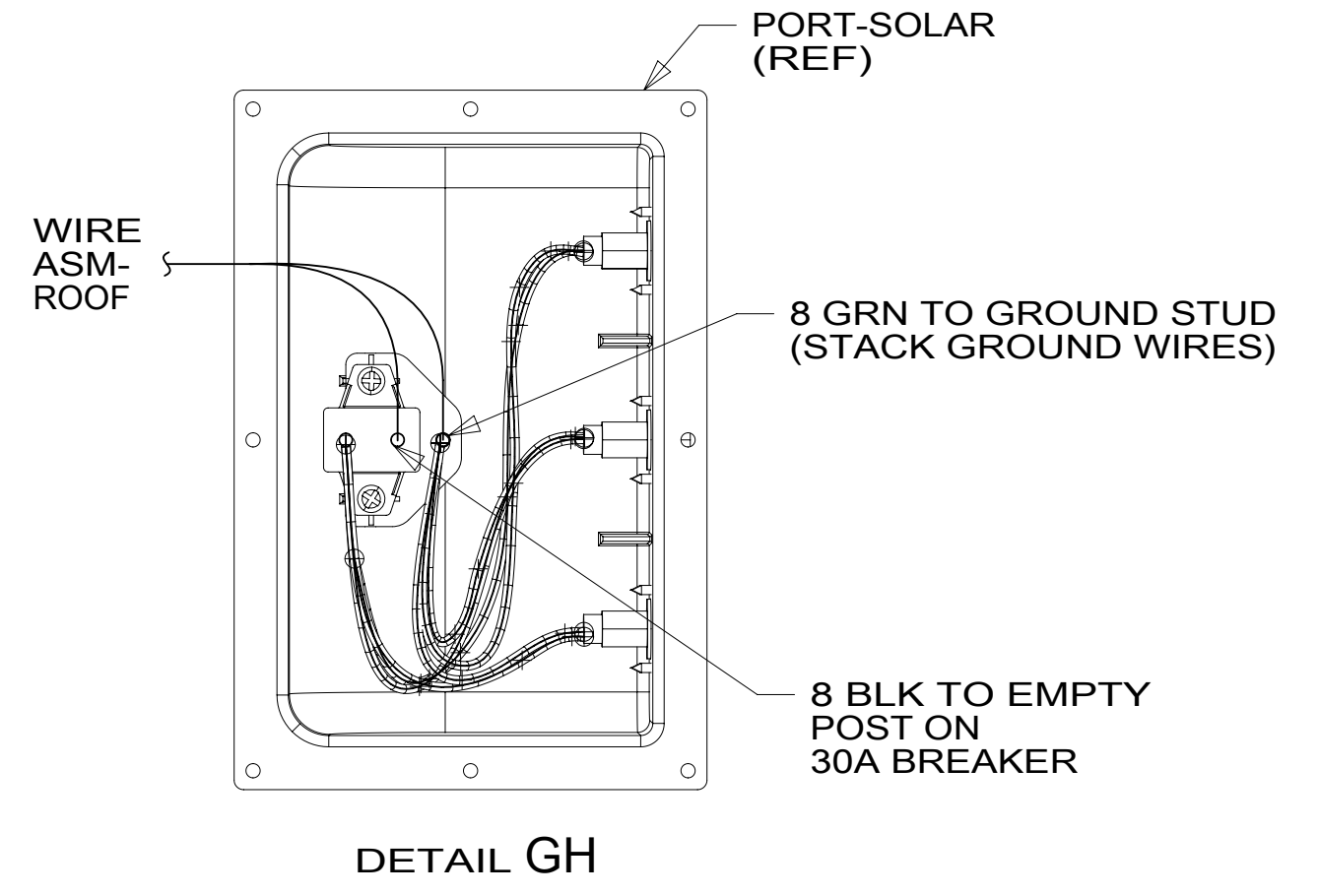
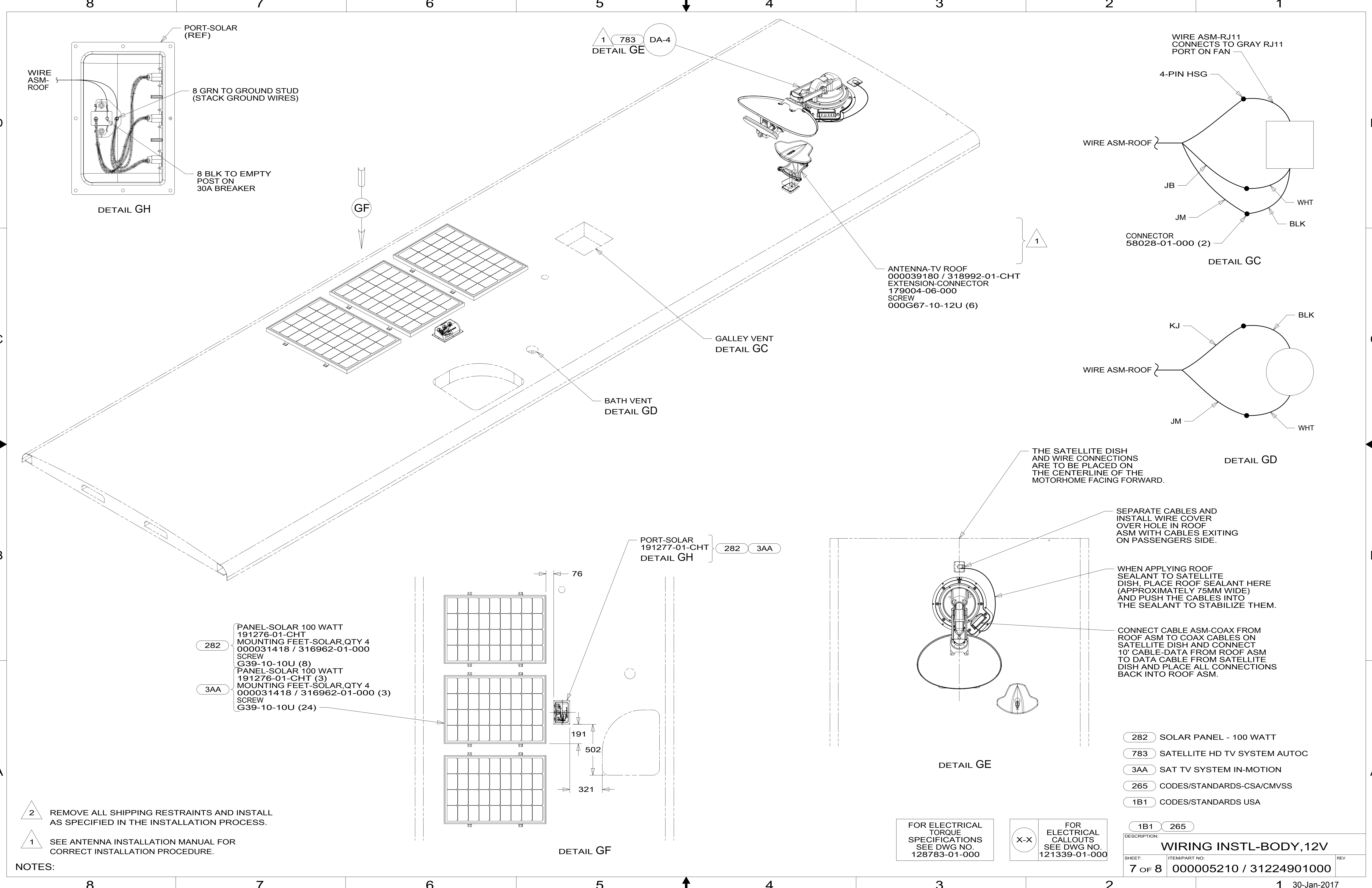
1B1 CODES/STANDARDS USA

1B1 265

DESCRIPTION:
WIRING INSTL-BODY, 12V

SHEET: 6 OF 8 ITEM/PART NO: 000005210 / 31224901000 REV

1 30-Jan-2017



ANTENNA-TV ROOF
000039180 / 318992-01-CHT
EXTENSION-CONNECTOR
179004-06-000
SCREW
000G67-10-12U (6)

GALLEY VENT
DETAIL GC

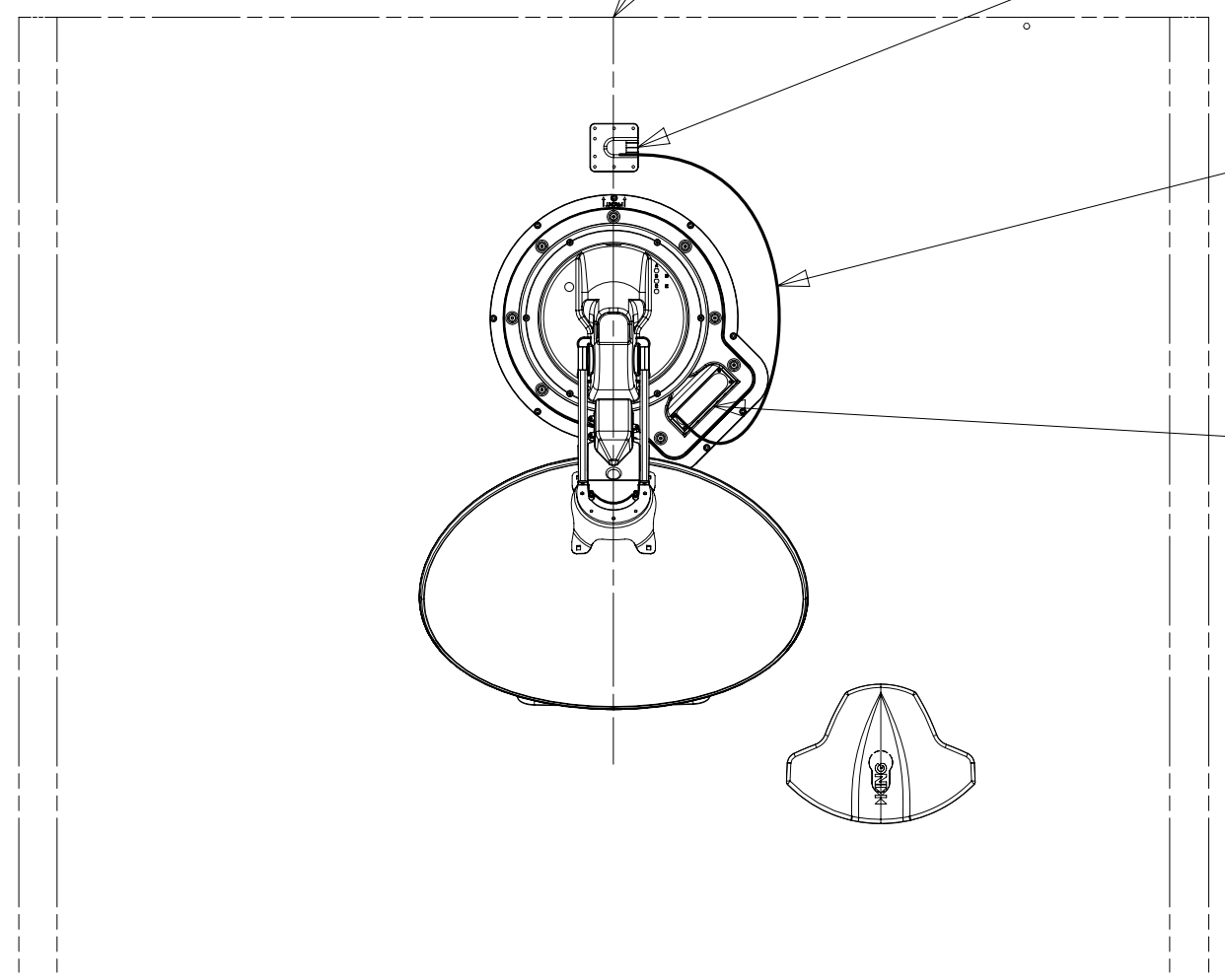
BATH VENT
DETAIL GD

THE SATELLITE DISH AND WIRE CONNECTIONS ARE TO BE PLACED ON THE CENTERLINE OF THE MOTORHOME FACING FORWARD.

SEPARATE CABLES AND INSTALL WIRE COVER OVER HOLE IN ROOF ASM WITH CABLES EXITING ON PASSENGERS SIDE.

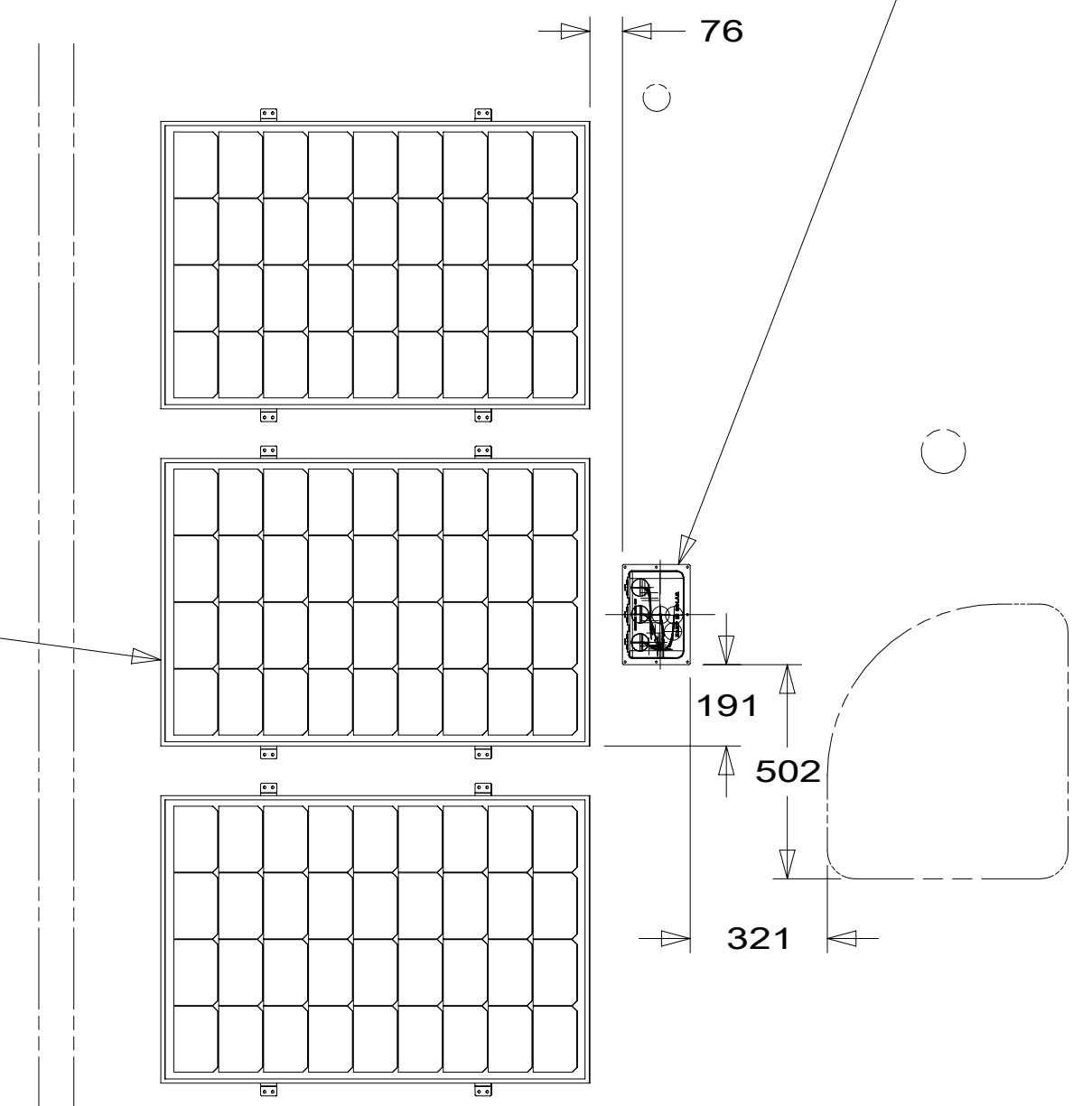
WHEN APPLYING ROOF SEALANT TO SATELLITE DISH, PLACE ROOF SEALANT HERE (APPROXIMATELY 75MM WIDE) AND PUSH THE CABLES INTO THE SEALANT TO STABILIZE THEM.

CONNECT CABLE ASM-COAX FROM ROOF ASM TO COAX CABLES ON SATELLITE DISH AND CONNECT 10' CABLE-DATA FROM ROOF ASM TO DATA CABLE FROM SATELLITE DISH AND PLACE ALL CONNECTIONS BACK INTO ROOF ASM.



- 282 PANEL-SOLAR 100 WATT 191276-01-CHT MOUNTING FEET-SOLAR, QTY 4 000031418 / 316962-01-000 SCREW G39-10-10U (8)
- 3AA PANEL-SOLAR 100 WATT 191276-01-CHT (3) MOUNTING FEET-SOLAR, QTY 4 000031418 / 316962-01-000 (3) SCREW G39-10-10U (24)

PORT-SOLAR 191277-01-CHT
DETAIL GH } 282 3AA



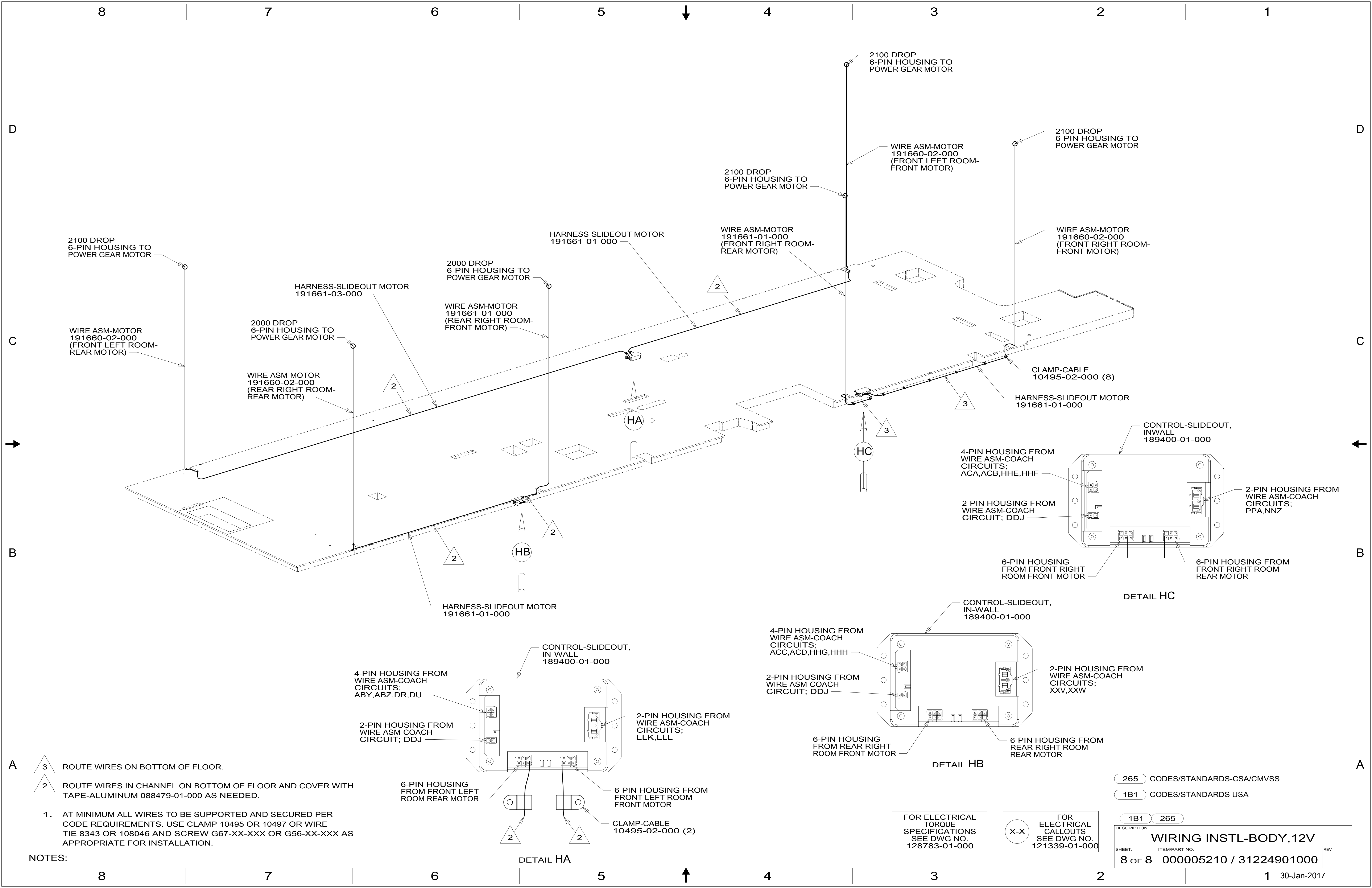
- NOTES:
- 2 REMOVE ALL SHIPPING RESTRAINTS AND INSTALL AS SPECIFIED IN THE INSTALLATION PROCESS.
 - 1 SEE ANTENNA INSTALLATION MANUAL FOR CORRECT INSTALLATION PROCEDURE.

FOR ELECTRICAL TORQUE SPECIFICATIONS SEE DWG NO. 128783-01-000

FOR ELECTRICAL CALLOUTS SEE DWG NO. 121339-01-000

- 282 SOLAR PANEL - 100 WATT
- 783 SATELLITE HD TV SYSTEM AUTOC
- 3AA SAT TV SYSTEM IN-MOTION
- 265 CODES/STANDARDS-CSA/CMVSS
- 1B1 CODES/STANDARDS USA

| | | |
|---|--|-----|
| DESCRIPTION: WIRING INSTL-BODY, 12V | | |
| SHEET: 7 OF 8 | ITEM/PART NO.: 000005210 / 31224901000 | REV |
| 30-Jan-2017 | | |



- 3 ROUTE WIRES ON BOTTOM OF FLOOR.
- 2 ROUTE WIRES IN CHANNEL ON BOTTOM OF FLOOR AND COVER WITH TAPE-ALUMINUM 088479-01-000 AS NEEDED.
1. AT MINIMUM ALL WIRES TO BE SUPPORTED AND SECURED PER CODE REQUIREMENTS. USE CLAMP 10495 OR 10497 OR WIRE TIE 8343 OR 108046 AND SCREW G67-XX-XXX OR G56-XX-XXX AS APPROPRIATE FOR INSTALLATION.

NOTES:

- 265 CODES/STANDARDS-CSA/CMVSS
- 1B1 CODES/STANDARDS USA

FOR ELECTRICAL TORQUE SPECIFICATIONS SEE DWG NO. 128783-01-000

FOR ELECTRICAL CALLOUTS SEE DWG NO. 121339-01-000

| | | |
|---|--|-----|
| DESCRIPTION: WIRING INSTL-BODY, 12V | | |
| SHEET: 8 OF 8 | ITEM/PART NO.: 000005210 / 31224901000 | REV |