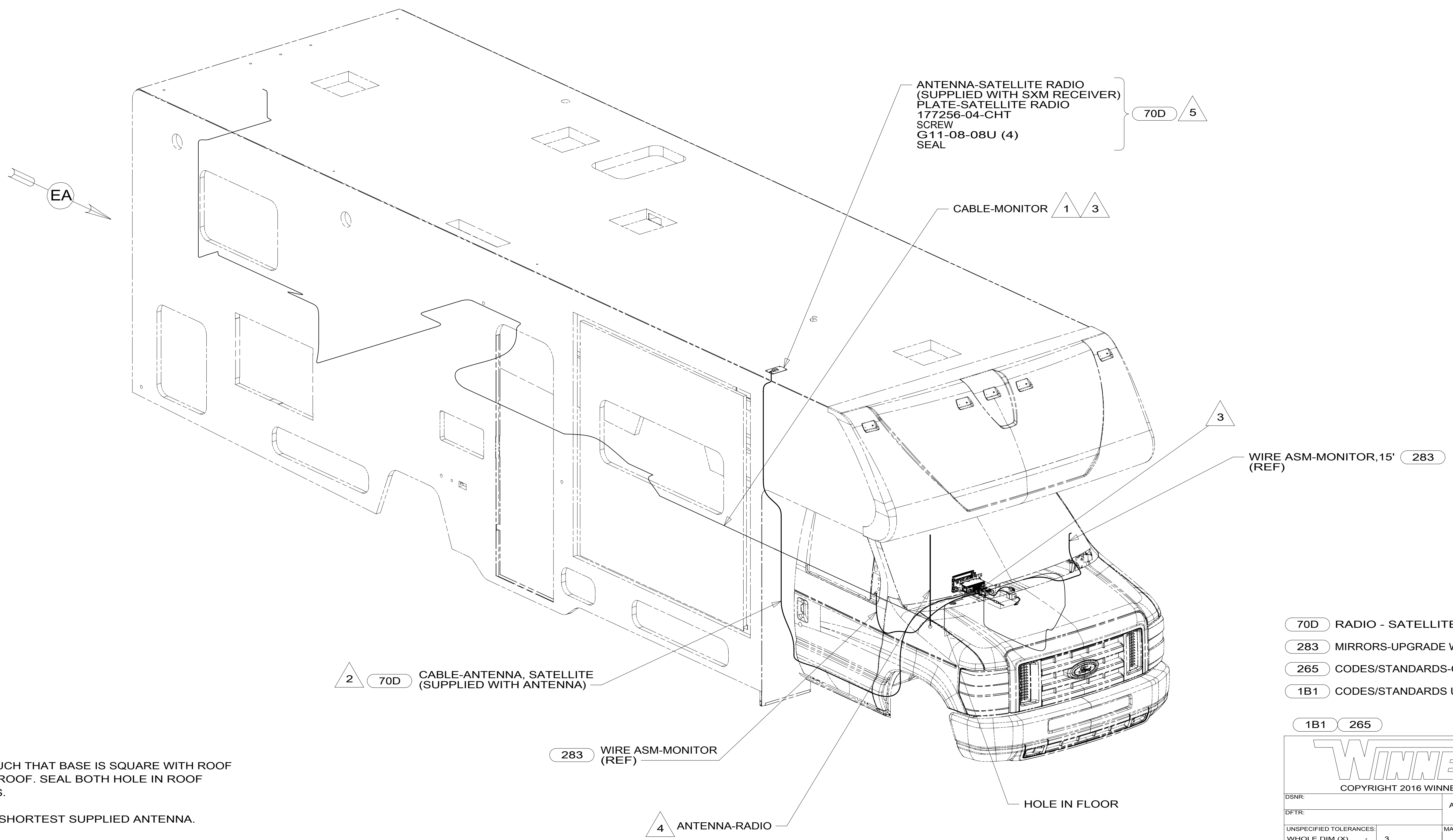


8 7 6 5 4 3 2 1

D  
C  
B  
A



- NOTES:
- 5 MOUNT ANTENNA AND PLATE SUCH THAT BASE IS SQUARE WITH ROOF AND DIRECTLY OVER HOLE IN ROOF. SEAL BOTH HOLE IN ROOF AND ANTENNA BASE AT SCREWS.
  - 4 SUPPLIED WITH CHASSIS. USE SHORTEST SUPPLIED ANTENNA.
  - 3 ROUTE CABLE TO DASH RADIO.
  - 2 ROUTE CABLE FROM RADIO TO PASSENGER'S STEPWELL AREA, UP WINGWALL, THROUGH SLEEPER BOARD ASM, UNDER TRIM TO ANTENNA PLATE ON ROOF.
  - 1 REAR MONITOR CAMERA CABLE IS PART OF WIRE ASM-CHASSIS AND RUNS ALONG LEFT FRAME RAIL.

ANTENNA-SATELLITE RADIO  
(SUPPLIED WITH SXM RECEIVER)  
PLATE-SATELLITE RADIO  
177256-04-CHT  
SCREW  
G-11-08-08U (4)  
SEAL

CABLE-MONITOR 1 3

70D 5

WIRE ASM-MONITOR, 15'  
(REF) 283

2 70D CABLE-ANTENNA, SATELLITE  
(SUPPLIED WITH ANTENNA)

283 WIRE ASM-MONITOR  
(REF)

4 ANTENNA-RADIO

HOLE IN FLOOR

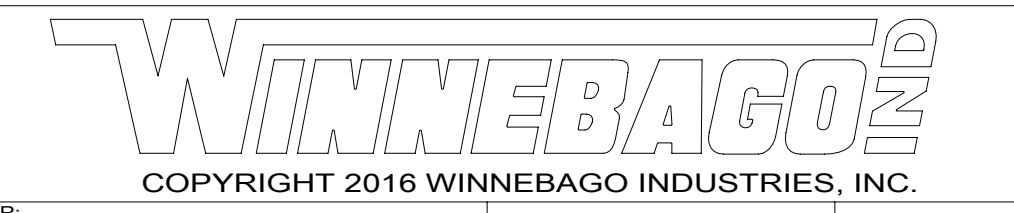
70D RADIO - SATELLITE SIRIUSXM

283 MIRRORS-UPGRADE W/CAMERA

265 CODES/STANDARDS-CSA/CMVSS

1B1 CODES/STANDARDS USA

1B1 265



DSNR:		ALL DIMENSIONS ARE IN MILLIMETERS	
DFFR:		MATERIAL:	
UNSPECIFIED TOLERANCES:			
WHOLE DIM (X)	: 3		
ONE-PLACE (X.X)	: 1.5		
TWO-PLACE (X.XX)	: 0.50		
ANGLE	: 1°		

FOR ELECTRICAL TORQUE SPECIFICATIONS SEE DWG NO. 128783-01-000

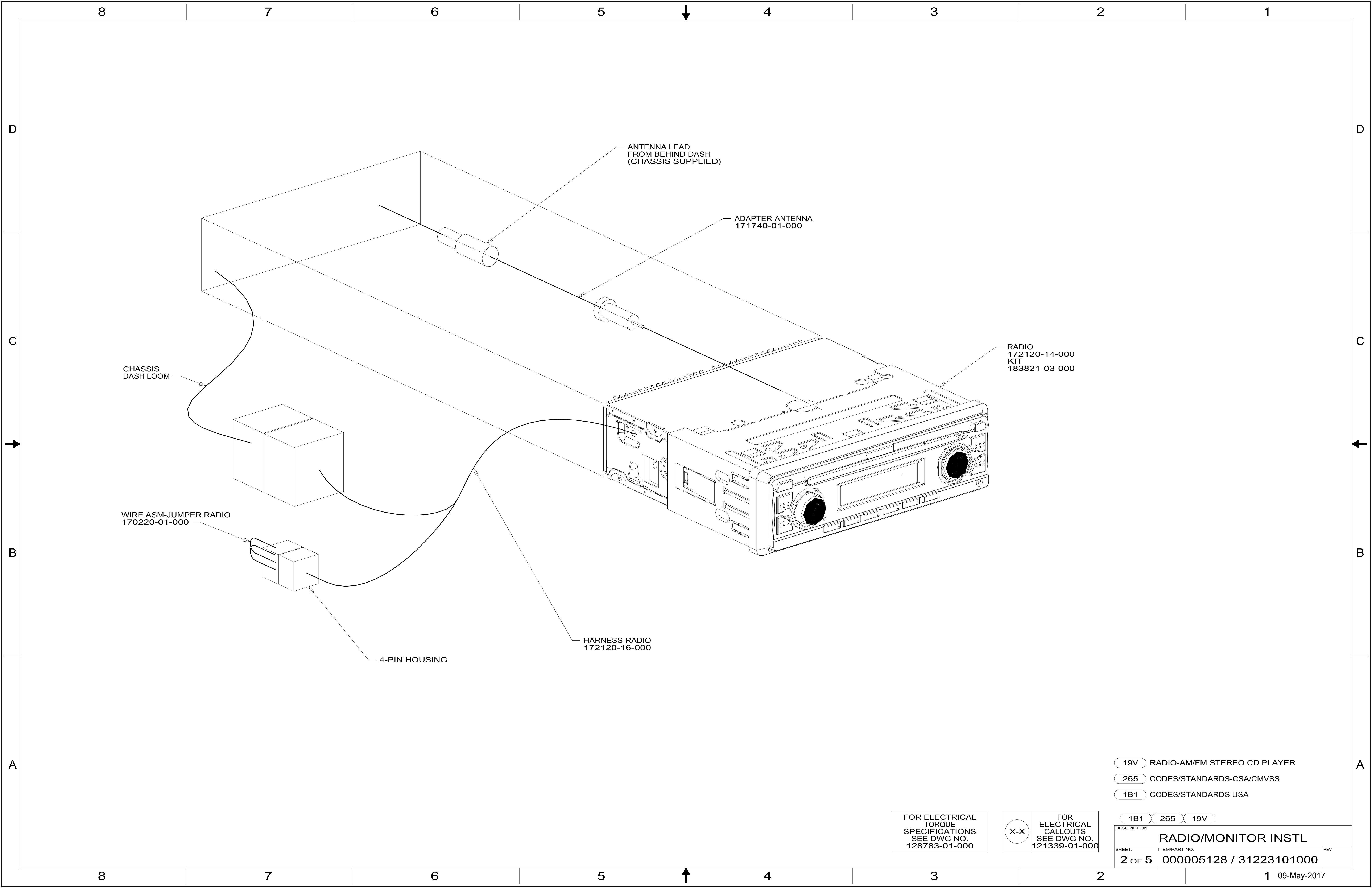
FOR ELECTRICAL CALLOUTS SEE DWG NO. 121339-01-000

REFER TO ES0018 FOR FASTENER TIGHTENING GUIDELINES

WEIGHT: (LBS) FIRST USED: 17 331D

DESCRIPTION: RADIO/MONITOR INSTL

SHEET: 1 OF 5 ITEM/PART NO: 000005128 / 31223101000 REF: 1 09-May-2017

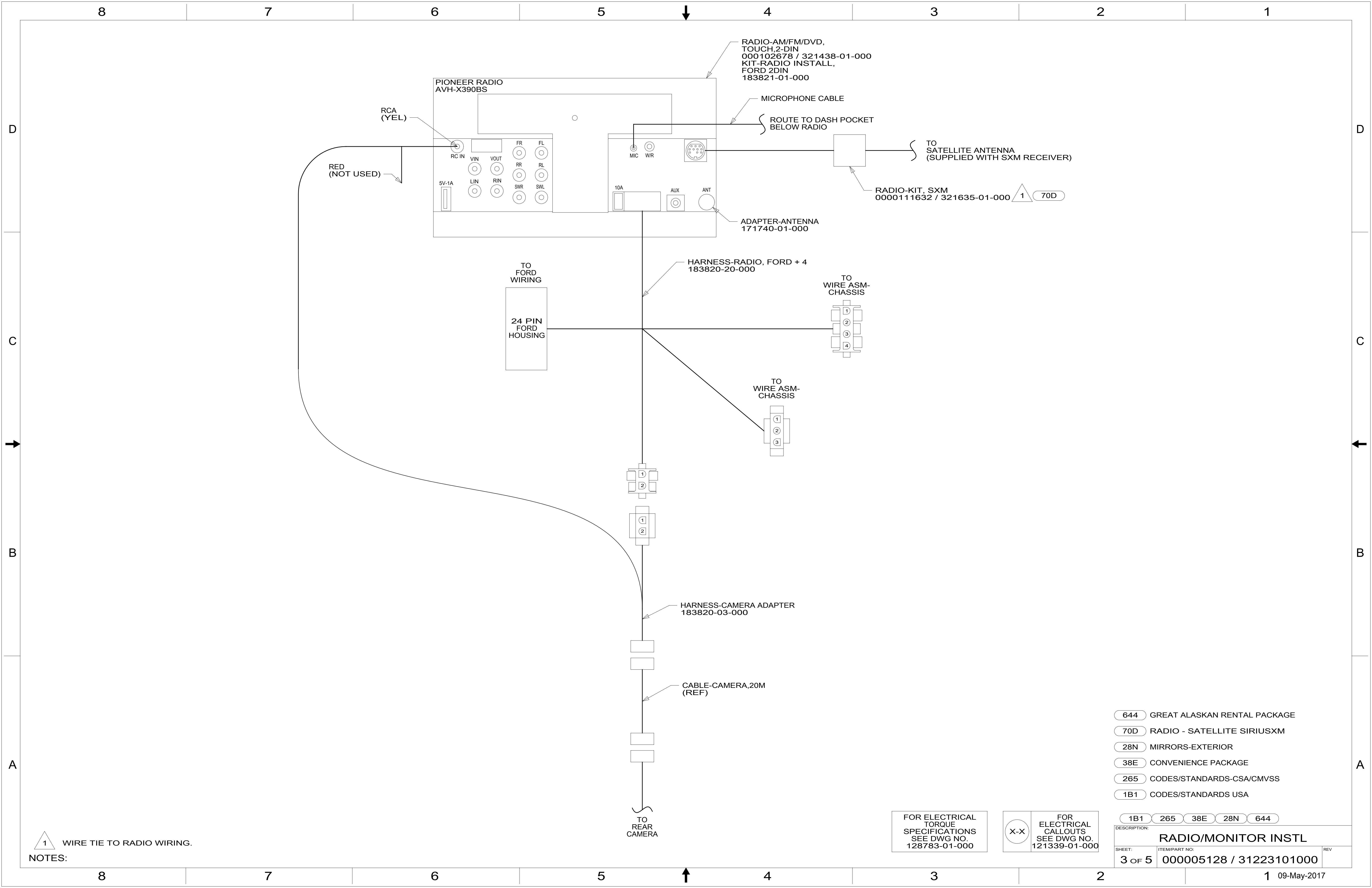


- 19V RADIO-AM/FM STEREO CD PLAYER
- 265 CODES/STANDARDS-CSA/CMVSS
- 1B1 CODES/STANDARDS USA

FOR ELECTRICAL  
TORQUE  
SPECIFICATIONS  
SEE DWG NO.  
128783-01-000

FOR  
ELECTRICAL  
CALLOUTS  
SEE DWG NO.  
121339-01-000

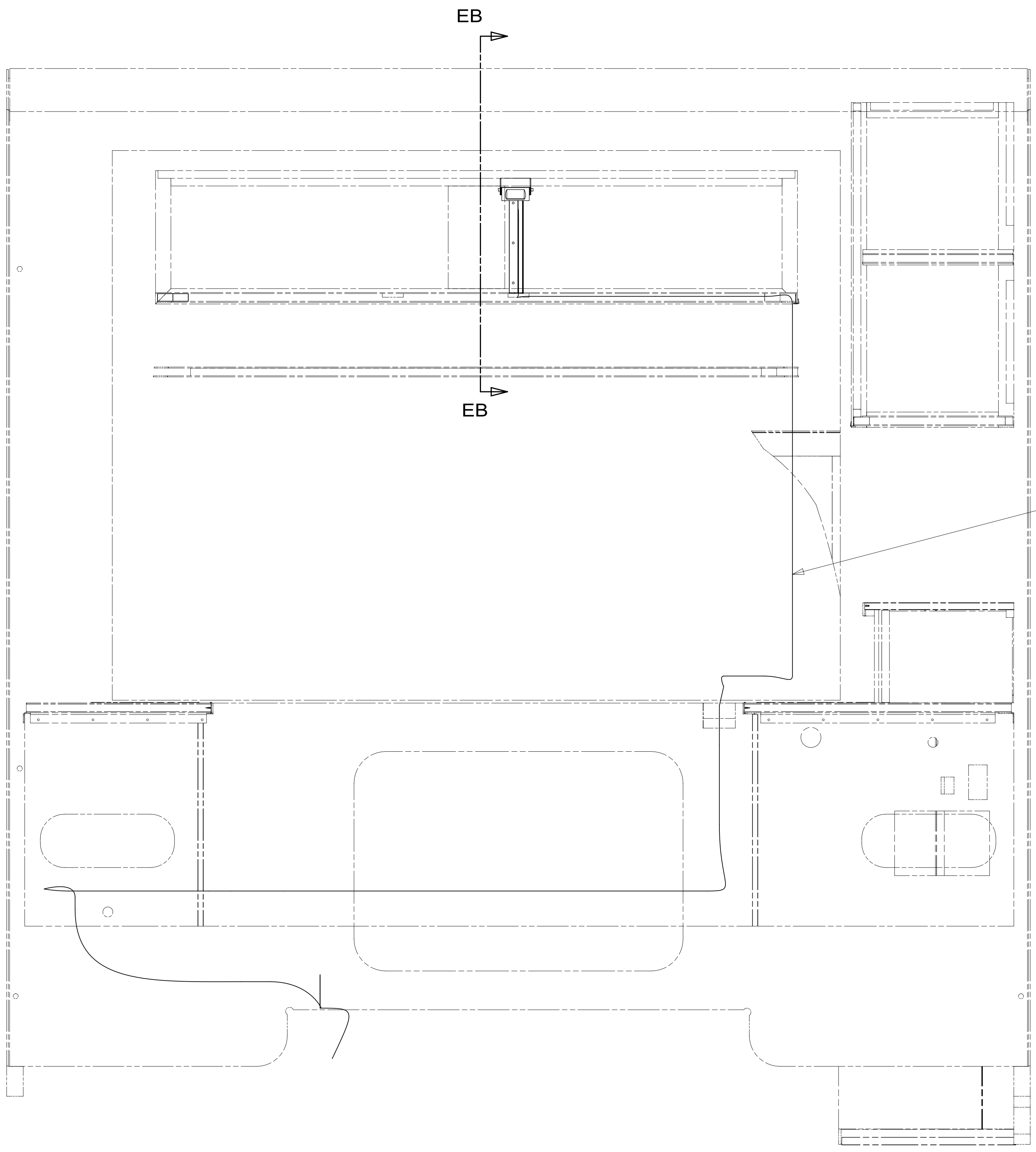
DESCRIPTION:	1B1 265 19V	
<b>RADIO/MONITOR INSTL</b>		
SHEET:	ITEM/PART NO:	REV
2 OF 5	000005128 / 31223101000	



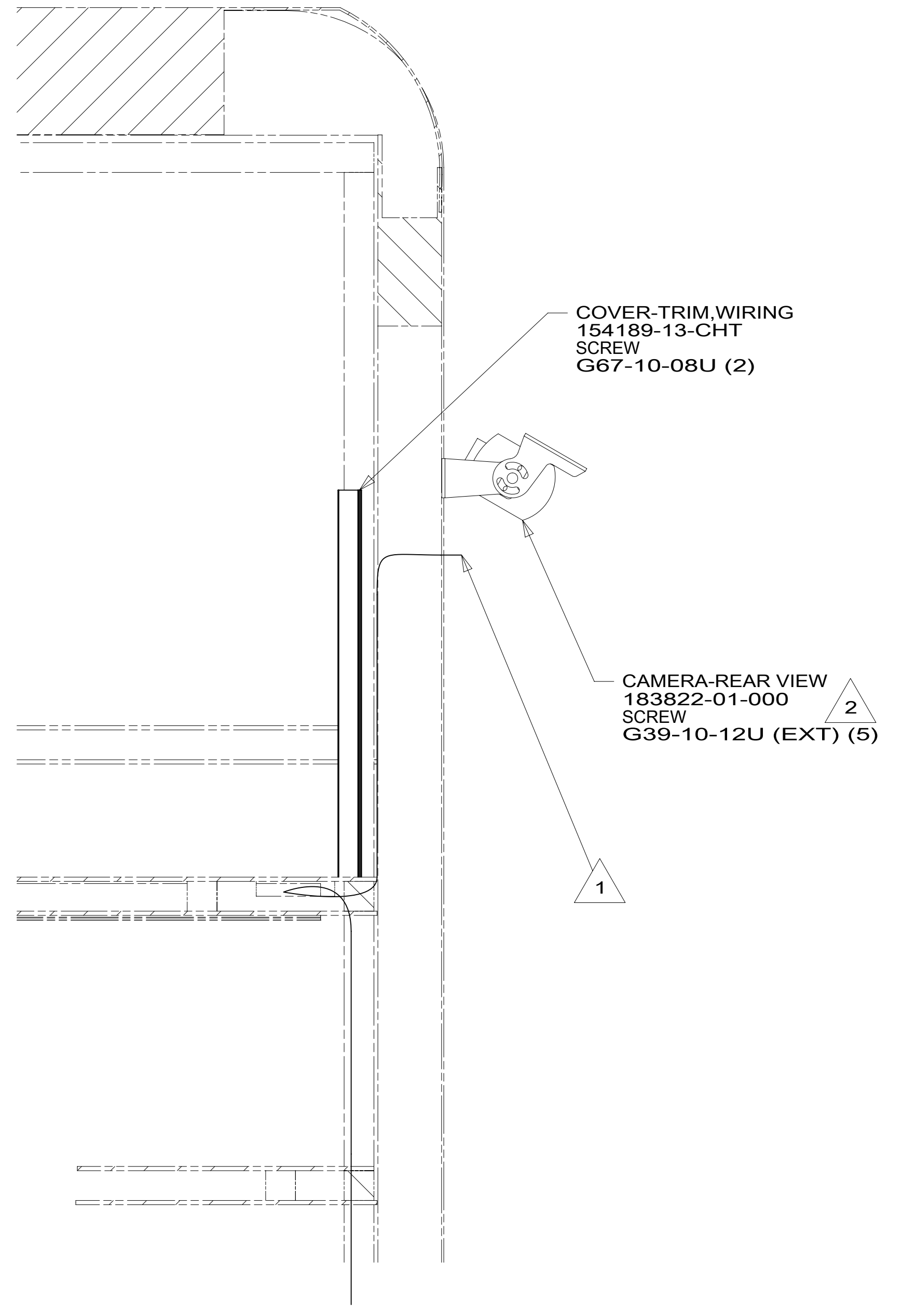


8 7 6 5 4 3 2 1

D  
C  
B  
A



VIEW EA



SECTION EB-EB 38E

- NOTES:
- 4 MONITOR CABLE IS ROUTED THRU TUBE IN SLIDEOUT FLOOR AND UP CORNER OF SLIDEOUT TO OVHD CABINET.
  - 3 MONITOR CABLE IS PART OF WIRE ASM-CHASSIS.
  - 2 LEAVE CAMERA CABLE IN BOTTOM OF OVHD CABT WITHOUT 38E
  - 1 CABLE ROUTED THRU BACKWALL.

- 38E CONVENIENCE PACKAGE
- 265 CODES/STANDARDS-CSA/CMVSS
- 1B1 CODES/STANDARDS USA

FOR ELECTRICAL TORQUE SPECIFICATIONS SEE DWG NO. 128783-01-000

FOR ELECTRICAL CALLOUTS SEE DWG NO. 121339-01-000

DESCRIPTION:		1B1 265	
<b>RADIO/MONITOR INSTL</b>			
SHEET:	ITEM/PART NO.:	REV	
5 OF 5	000005128 / 31223101000		

8 7 6 5 4 3 2 1 09-May-2017