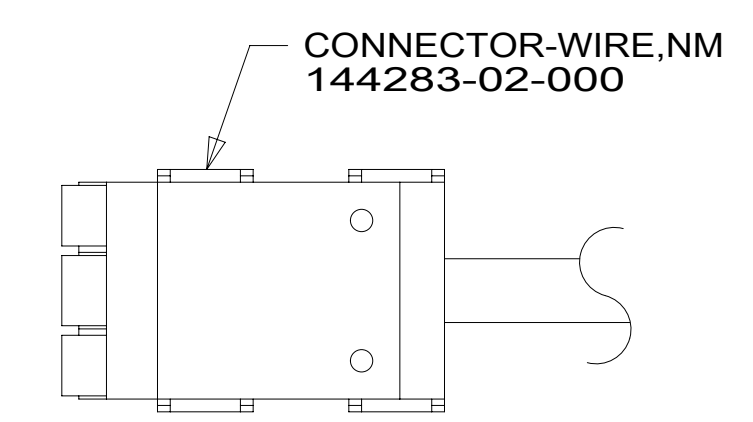


8 7 6 5 4 3 2 1

RED	1B1	136135-07-036	
	265	136136-07-036	
YEL	1B1	136131-05-017	
	265	136134-05-017	
BLK	1B1	136135-06-037	093
	265	136136-06-037	093
BLK	1B1	136135-06-037	09A
	265	136136-06-037	09A
BLK-2	1B1	136135-06-006	09A
	265	136136-06-006	09A
BRN	1B1	136131-03-080	
	265	136134-03-080	
BLU	1B1	136131-02-089	
	265	136134-02-089	
WHT	1B1	136135-09-069	09A
	265	136136-09-069	09A
THROW IN WIRE #1	1B1	136131-02-032	
	265	136134-02-032	
THROW IN WIRE #2	1B1	136131-02-035	1D3
	265	136134-02-035	1D3
THROW IN WIRE #3	1B1	136131-03-048	4
	265	136134-03-048	4
THROW IN WIRE #4	1B1	136131-03-014	4
	265	136134-03-014	4
MAIN	1B1	164957-07-045	
	265	164957-08-045	
GROUND MAIN		136145-06-018	



DETAIL AA

- 093 PREMIUM PACKAGE WITHOUT
- 09A PREMIUM PACKAGE
- 1D3 ENTERTAIN CENTR/EXT TV-DVD
- 265 CODES/STANDARDS-CSA/CMVSS
- 1B1 CODES/STANDARDS USA

WINNEBAGO[®]
COPYRIGHT 2016 WINNEBAGO INDUSTRIES, INC.

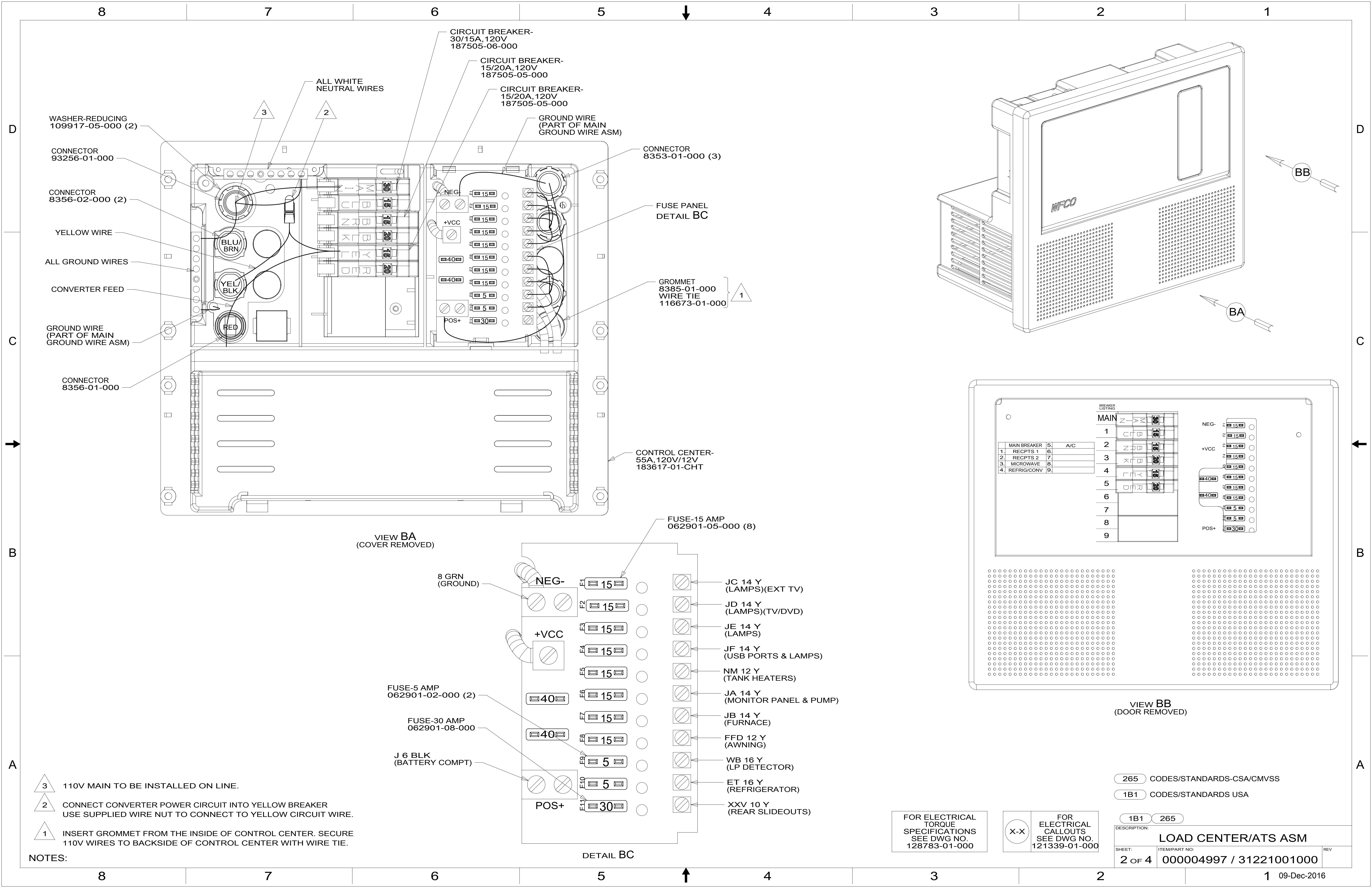
DSNR:		ALL DIMENSIONS ARE IN MILLIMETERS	
DFFR:			
UNSPECIFIED TOLERANCES:	MATERIAL:		
WHOLE DIM (X) :		3	
ONE-PLACE (X.X) :		1.5	
TWO-PLACE (X.XX) :		0.50	
ANGLE :		1°	
REFER TO ES0018 FOR FASTENER TIGHTENING GUIDELINES		WEIGHT: (LBS)	FIRST USED:
			17 331D
DESCRIPTION: LOAD CENTER/ATS ASM			
SHEET: 1 OF 4	ITEM/PART NO: 000004997 / 31221001000	REF:	REV
		1 09-Dec-2016	

FOR ELECTRICAL TORQUE SPECIFICATIONS SEE DWG NO. 128783-01-000

FOR ELECTRICAL CALLOUTS SEE DWG NO. 121339-01-000

- NOTES:
1. ALL GROUND WIRES TO BE COVERED WITH TUBING 8041-02-000.
 2. SECURE WIRES TO BACKSIDE OF LOAD CENTER WITH WIRE TIE 116673-01-000.
 3. SEE WIRING INSTL-BODY, 12V FOR ADDITIONAL INFORMATION.
 4. SEE DETAIL AA FOR CONNECTOR INSTALLATION.

8 7 6 5 4 3 2 1



WASHER-REDUCING
109917-05-000 (2)

CONNECTOR
93256-01-000

CONNECTOR
8356-02-000 (2)

YELLOW WIRE

ALL GROUND WIRES

CONVERTER FEED

GROUND WIRE
(PART OF MAIN
GROUND WIRE ASM)

CONNECTOR
8356-01-000

CIRCUIT BREAKER-
30/15A, 120V
187505-06-000

CIRCUIT BREAKER-
15/20A, 120V
187505-05-000

CIRCUIT BREAKER-
15/20A, 120V
187505-05-000

GROUND WIRE
(PART OF MAIN
GROUND WIRE ASM)

CONNECTOR
8353-01-000 (3)

FUSE PANEL
DETAIL BC

GROMMET
8385-01-000
WIRE TIE
116673-01-000

CONTROL CENTER-
55A, 120V/12V
183617-01-CHT

VIEW BA
(COVER REMOVED)

FUSE-15 AMP
062901-05-000 (8)

8 GRN
(GROUND)

NEG-

+VCC

FUSE-5 AMP
062901-02-000 (2)

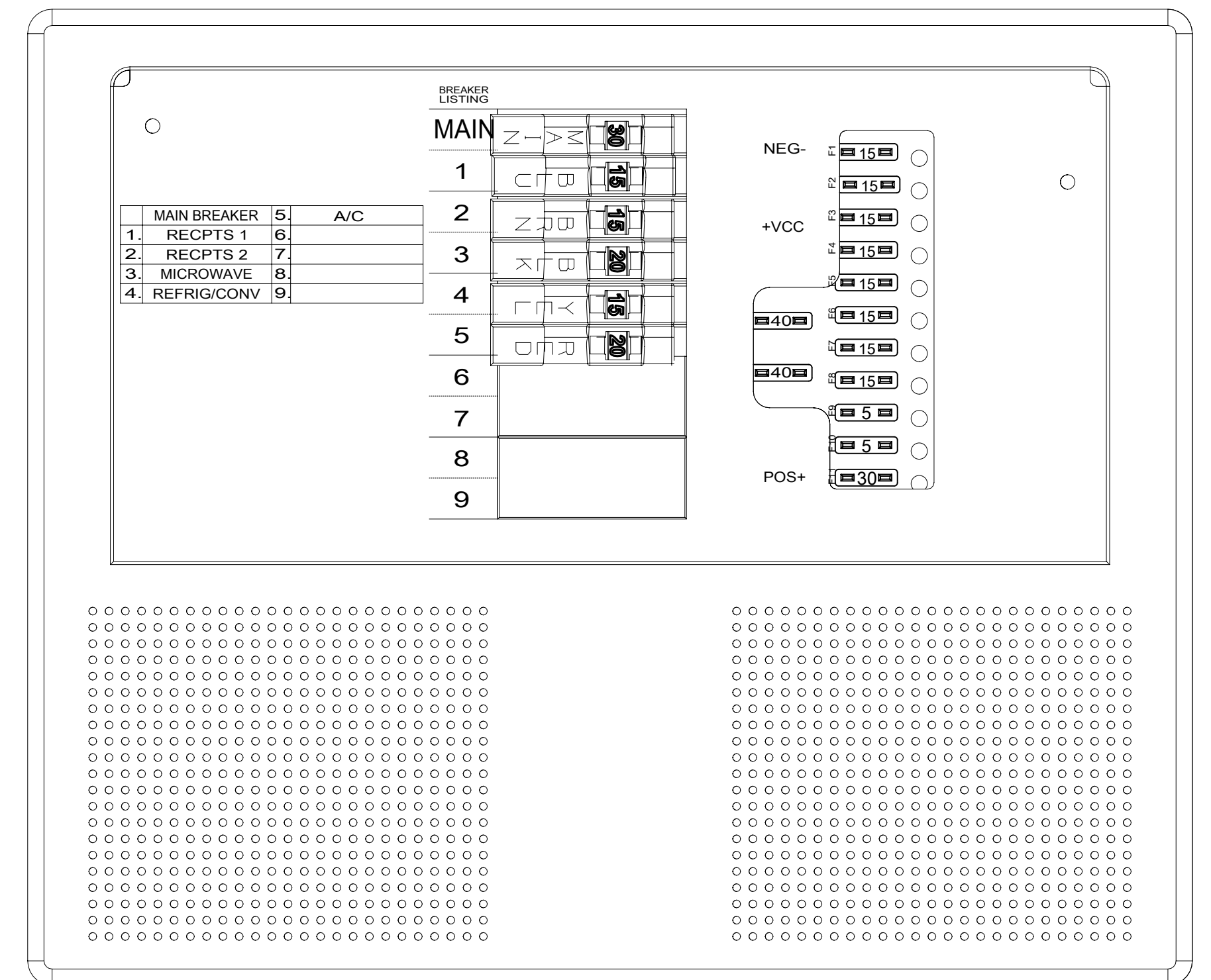
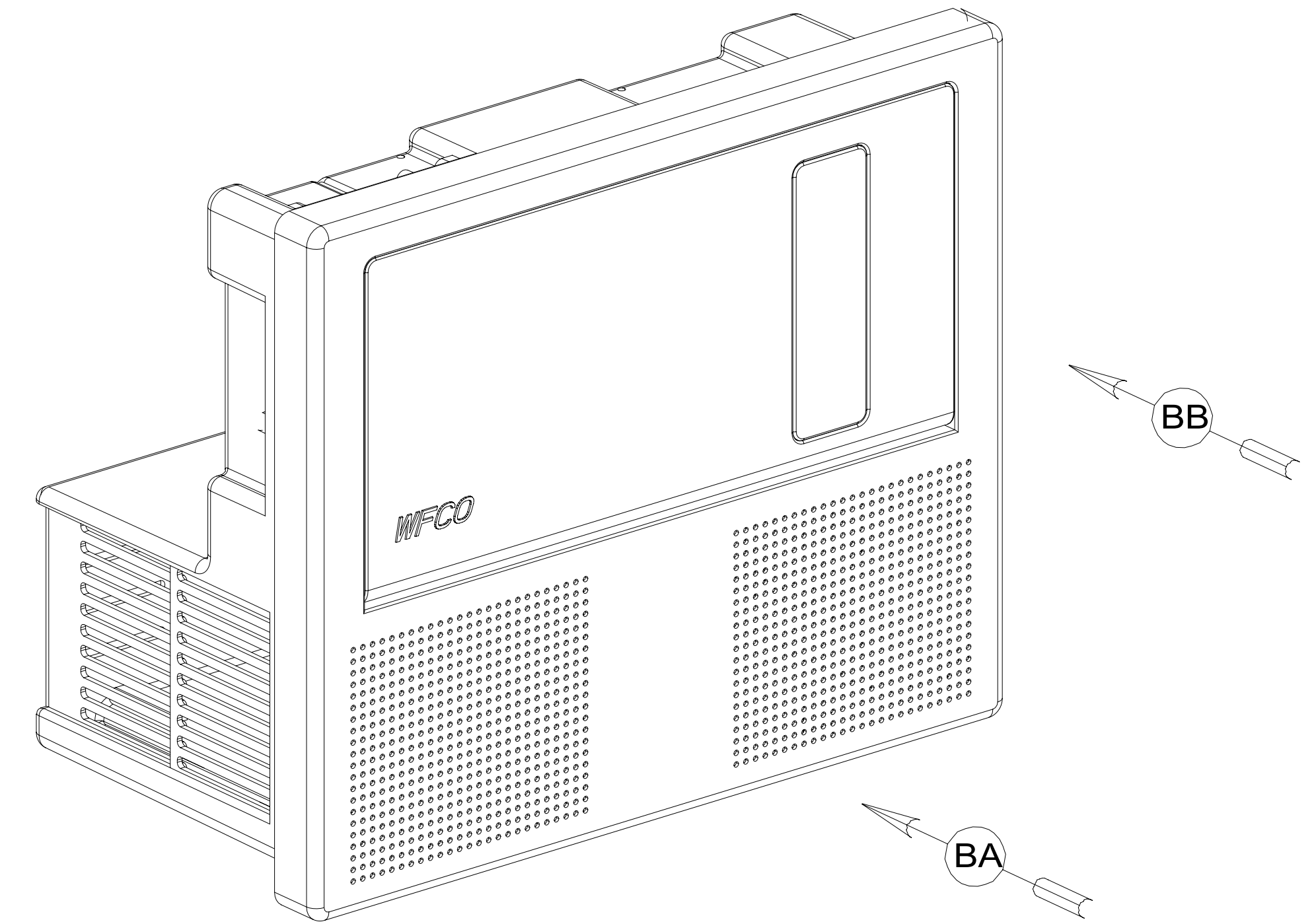
FUSE-30 AMP
062901-08-000

J 6 BLK
(BATTERY COMPT)

POS+

DETAIL BC

- JC 14 Y (LAMPS)(EXT TV)
- JD 14 Y (LAMPS)(TV/DVD)
- JE 14 Y (LAMPS)
- JF 14 Y (USB PORTS & LAMPS)
- NM 12 Y (TANK HEATERS)
- JA 14 Y (MONITOR PANEL & PUMP)
- JB 14 Y (FURNACE)
- FFD 12 Y (AWNING)
- WB 16 Y (LP DETECTOR)
- ET 16 Y (REFRIGERATOR)
- XXV 10 Y (REAR SLIDEOUTS)



VIEW BB
(DOOR REMOVED)

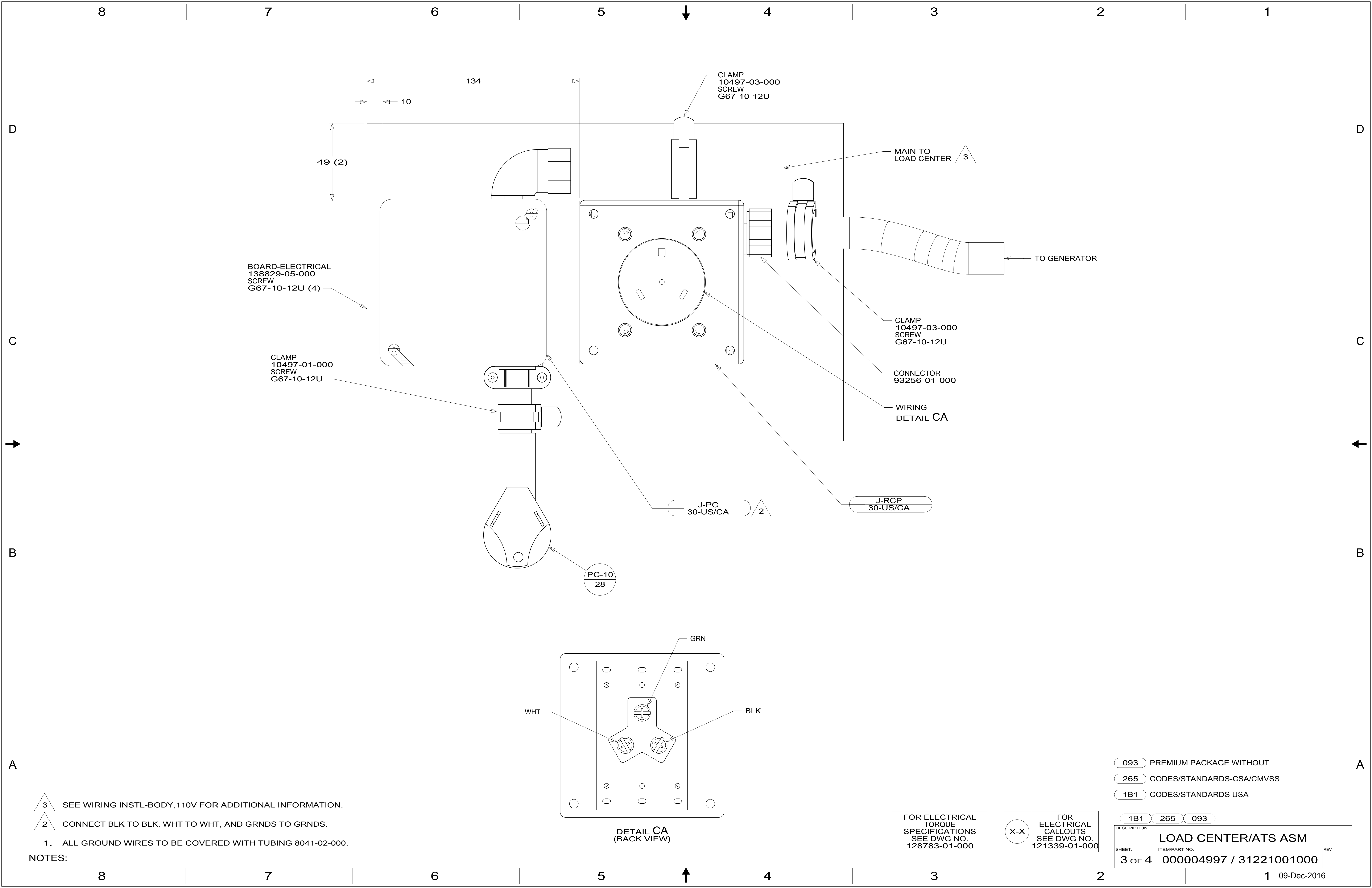
- NOTES:
- 3 110V MAIN TO BE INSTALLED ON LINE.
 - 2 CONNECT CONVERTER POWER CIRCUIT INTO YELLOW BREAKER USE SUPPLIED WIRE NUT TO CONNECT TO YELLOW CIRCUIT WIRE.
 - 1 INSERT GROMMET FROM THE INSIDE OF CONTROL CENTER. SECURE 110V WIRES TO BACKSIDE OF CONTROL CENTER WITH WIRE TIE.

FOR ELECTRICAL
TORQUE
SPECIFICATIONS
SEE DWG NO.
128783-01-000

FOR ELECTRICAL
CALLOUTS
SEE DWG NO.
121339-01-000

- 265 CODES/STANDARDS-CSA/CMVSS
- 1B1 CODES/STANDARDS USA

DESCRIPTION: LOAD CENTER/ATS ASM	
SHEET: 2 OF 4	ITEM/PART NO: 000004997 / 3122100100
REV	



BOARD-ELECTRICAL
138829-05-000
SCREW
G67-10-12U (4)

CLAMP
10497-01-000
SCREW
G67-10-12U

CLAMP
10497-03-000
SCREW
G67-10-12U

MAIN TO
LOAD CENTER $\triangle 3$

TO GENERATOR

CLAMP
10497-03-000
SCREW
G67-10-12U

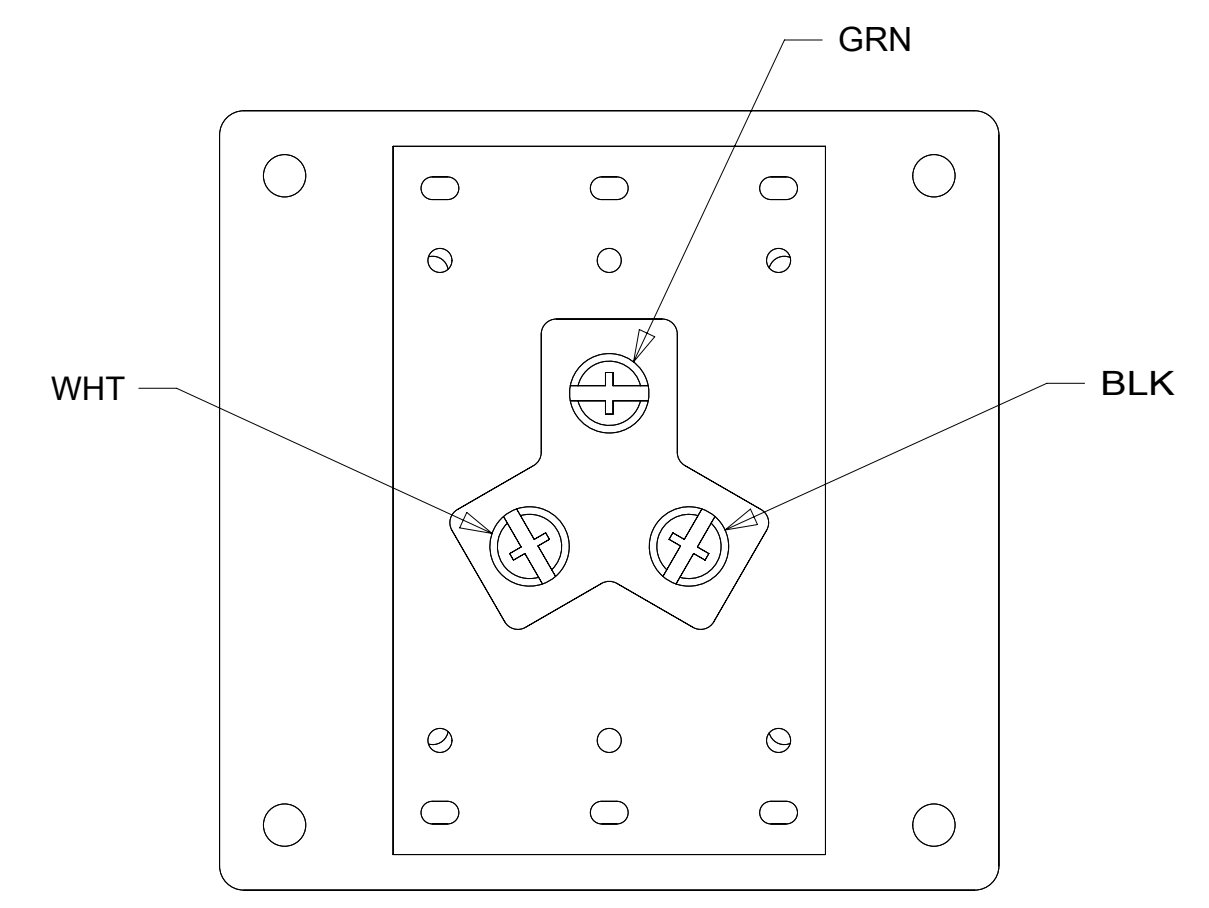
CONNECTOR
93256-01-000

WIRING
DETAIL CA

J-PC
30-US/CA $\triangle 2$

J-RCP
30-US/CA

PC-10
28



$\triangle 3$ SEE WIRING INSTL-BODY, 110V FOR ADDITIONAL INFORMATION.

$\triangle 2$ CONNECT BLK TO BLK, WHT TO WHT, AND GRNDS TO GRNDS.

1. ALL GROUND WIRES TO BE COVERED WITH TUBING 8041-02-000.

NOTES:

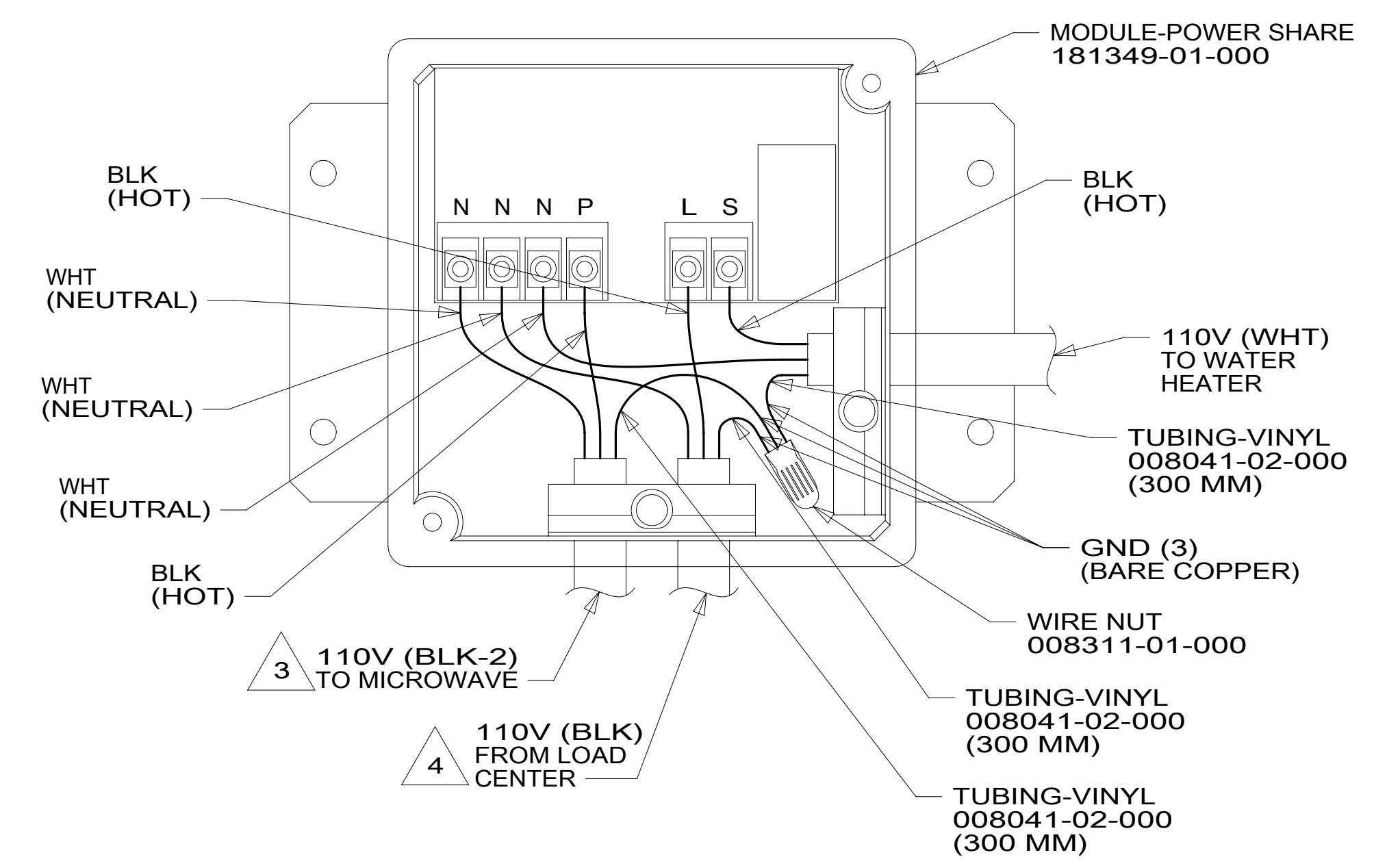
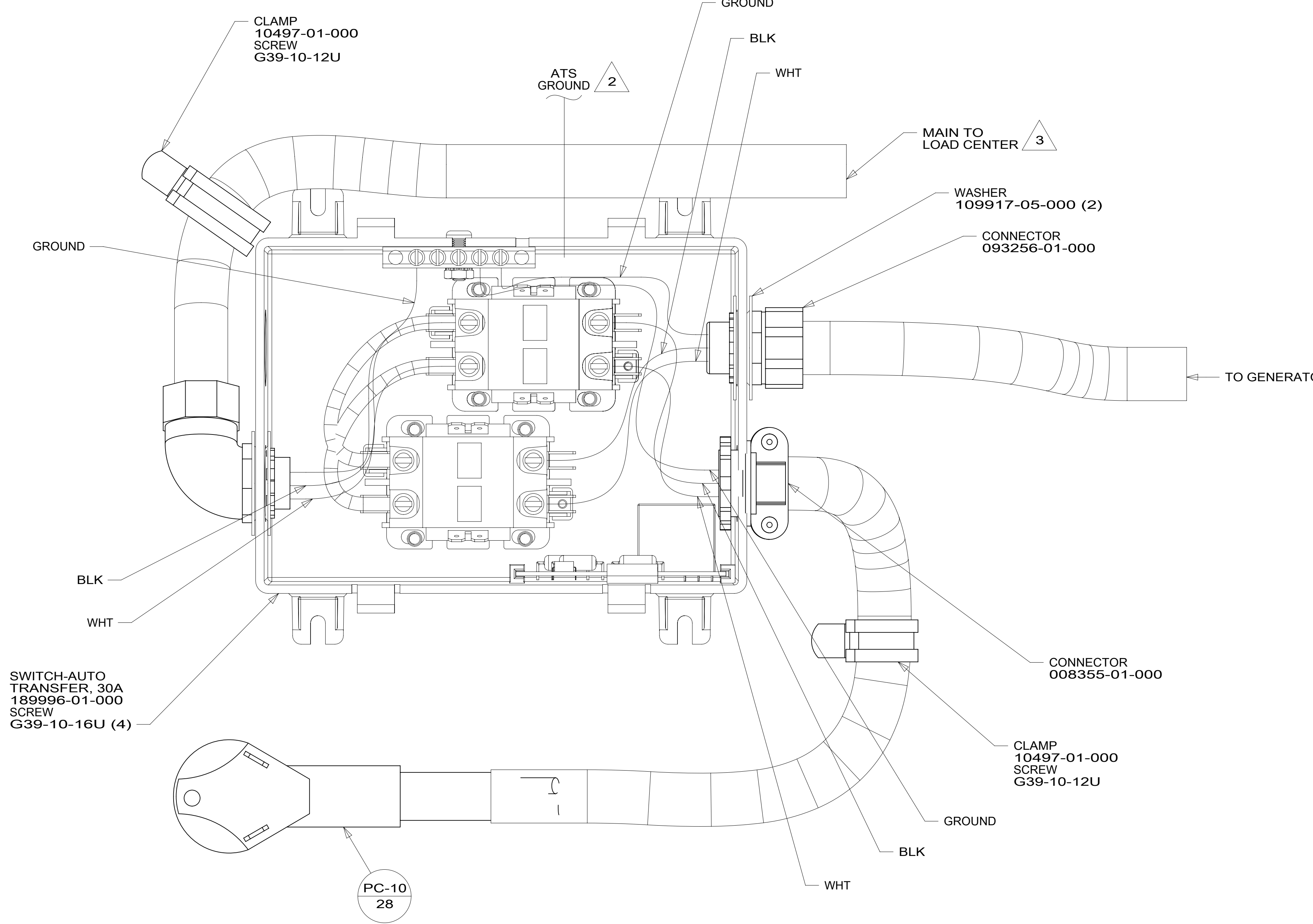
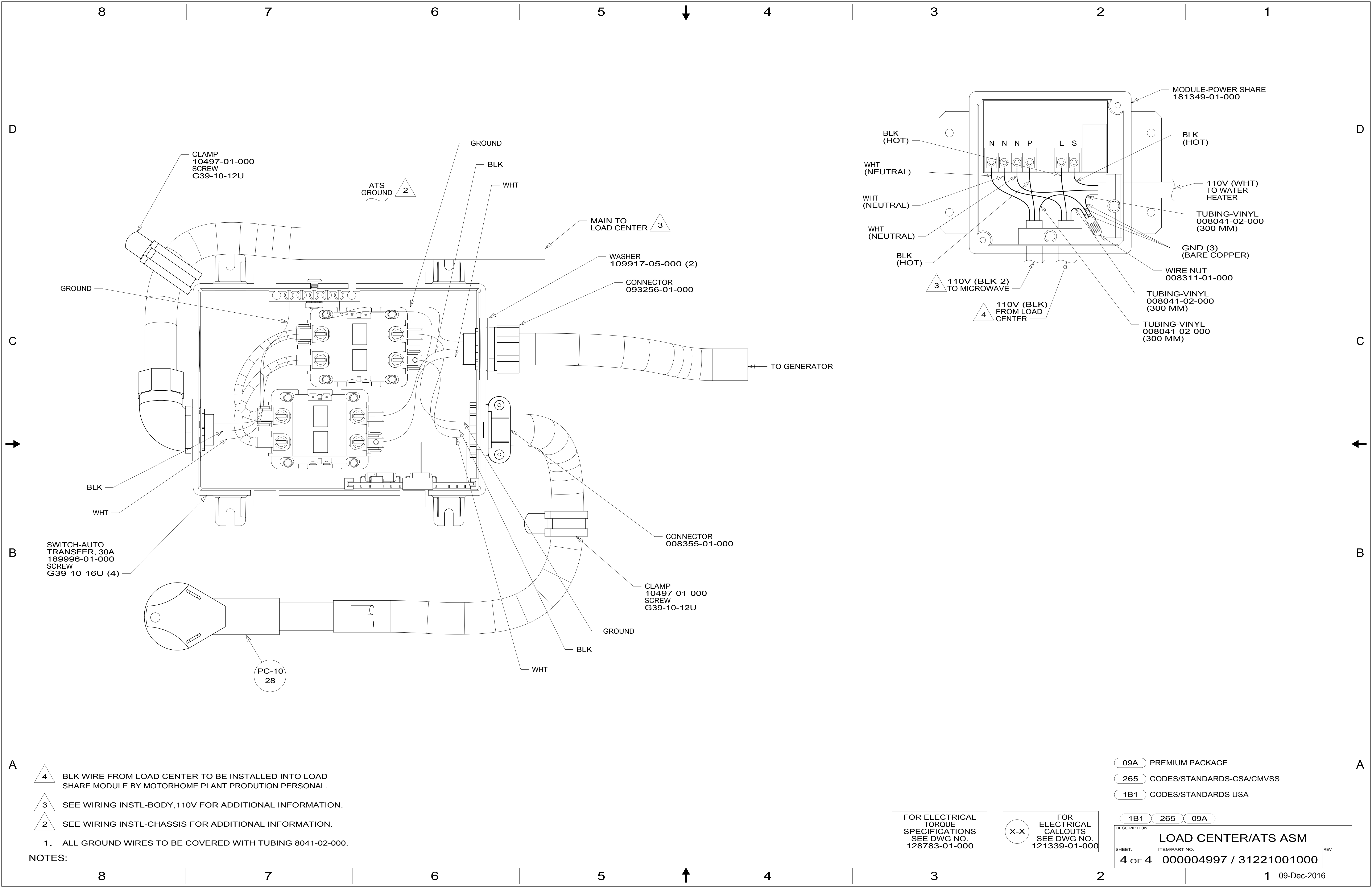
- 093** PREMIUM PACKAGE WITHOUT
- 265** CODES/STANDARDS-CSA/CMVSS
- 1B1** CODES/STANDARDS USA

1B1 265 093

FOR ELECTRICAL
TORQUE
SPECIFICATIONS
SEE DWG NO.
128783-01-000

FOR ELECTRICAL
CALLOUTS
SEE DWG NO.
121339-01-000

DESCRIPTION: LOAD CENTER/ATS ASM		
SHEET: 3 OF 4	ITEM/PART NO: 000004997 / 31221001000	REV



- 4 BLK WIRE FROM LOAD CENTER TO BE INSTALLED INTO LOAD SHARE MODULE BY MOTORHOME PLANT PRODUCTION PERSONAL.
- 3 SEE WIRING INSTL-BODY, 110V FOR ADDITIONAL INFORMATION.
- 2 SEE WIRING INSTL-CHASSIS FOR ADDITIONAL INFORMATION.

NOTES:
1. ALL GROUND WIRES TO BE COVERED WITH TUBING 8041-02-000.

- 09A PREMIUM PACKAGE
- 265 CODES/STANDARDS-CSA/CMVSS
- 1B1 CODES/STANDARDS USA

FOR ELECTRICAL TORQUE SPECIFICATIONS SEE DWG NO. 128783-01-000

FOR ELECTRICAL CALLOUTS SEE DWG NO. 121339-01-000

DESCRIPTION: LOAD CENTER/ATS ASM		
SHEET: 4 OF 4	ITEM/PART NO: 000004997 / 31221001000	REV