

8 7 6 5 4 3 2 1

D

D

C

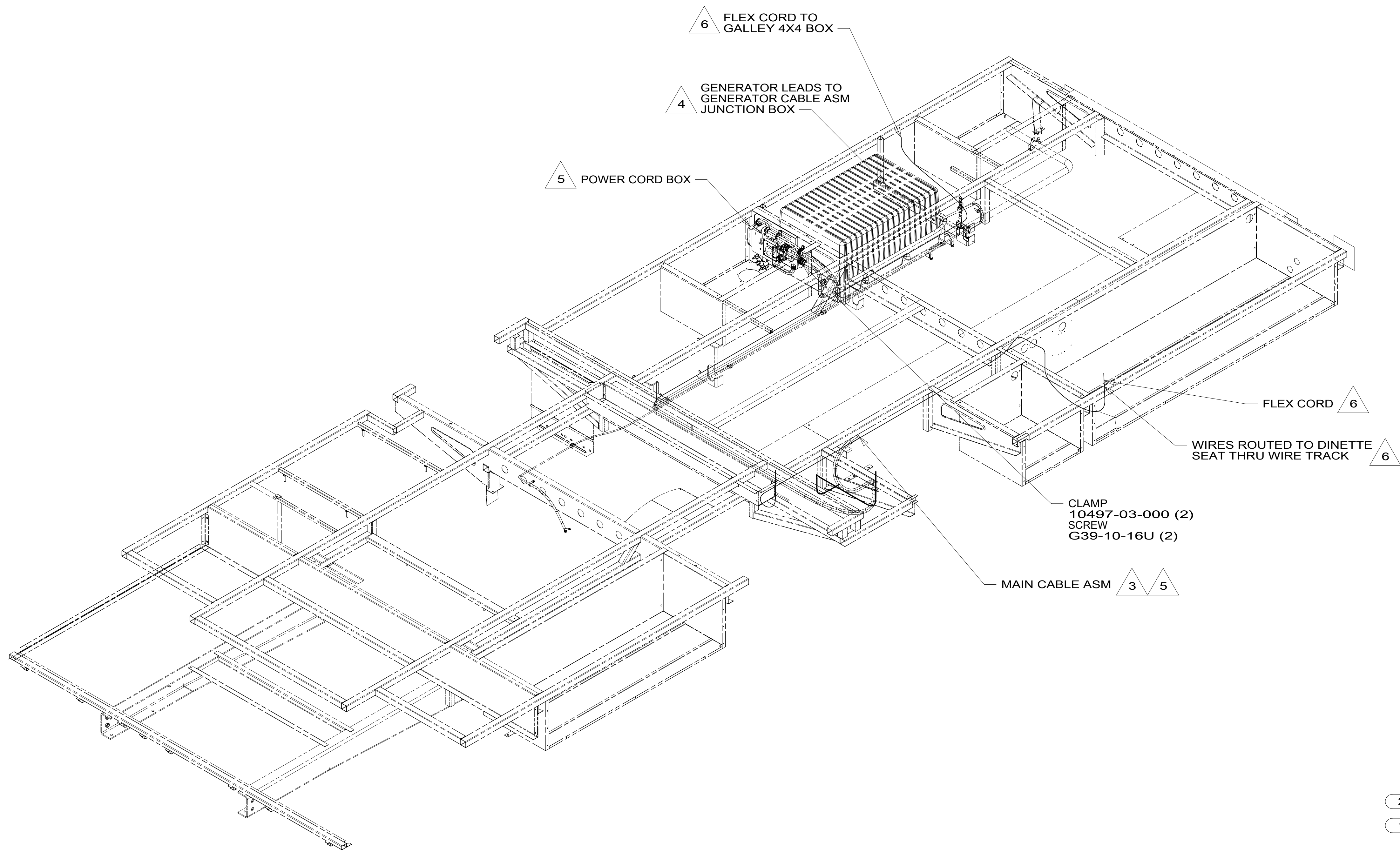
C

B

B

A

A



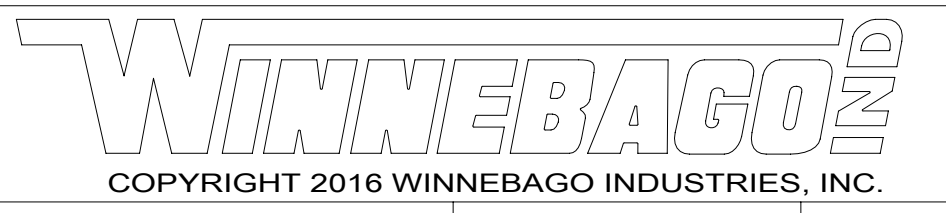
- 6 WIRE IS PART OF WIRE ASM-CHASSIS.
 - 5 SEE LOAD CENTER/ATS ASM FOR ADDITIONAL INFORMATION.
 - 4 SEE GENERATOR INSTL FOR ADDITIONAL INFORMATION.
 - 3 ROUTE WIRE THRU FLOOR.
2. ALL 110V WIRE TO BE CLAMPED WITH CLAMP 10497-05-000 WITHIN 200MM OF OUTLET BOXES, USE SCREW G67-10-12B.
 1. AT MINIMUM ALL WIRES TO BE SUPPORTED AND SECURED PER CODE REQUIREMENTS. USE CLAMP 10495 OR 10497 OR WIRE TIE 8343 OR 108046 AND SCREW G67-XX-XXX OR G56-XX-XXX AS APPROPRIATE FOR INSTALLATION.

NOTES:

FOR ELECTRICAL TORQUE SPECIFICATIONS SEE DWG NO. 128783-01-000

FOR ELECTRICAL CALLOUTS SEE DWG NO. 121339-01-000

- 265 CODES/STANDARDS-CSA/CMVSS
- 1B1 CODES/STANDARDS USA
- 1B1 265

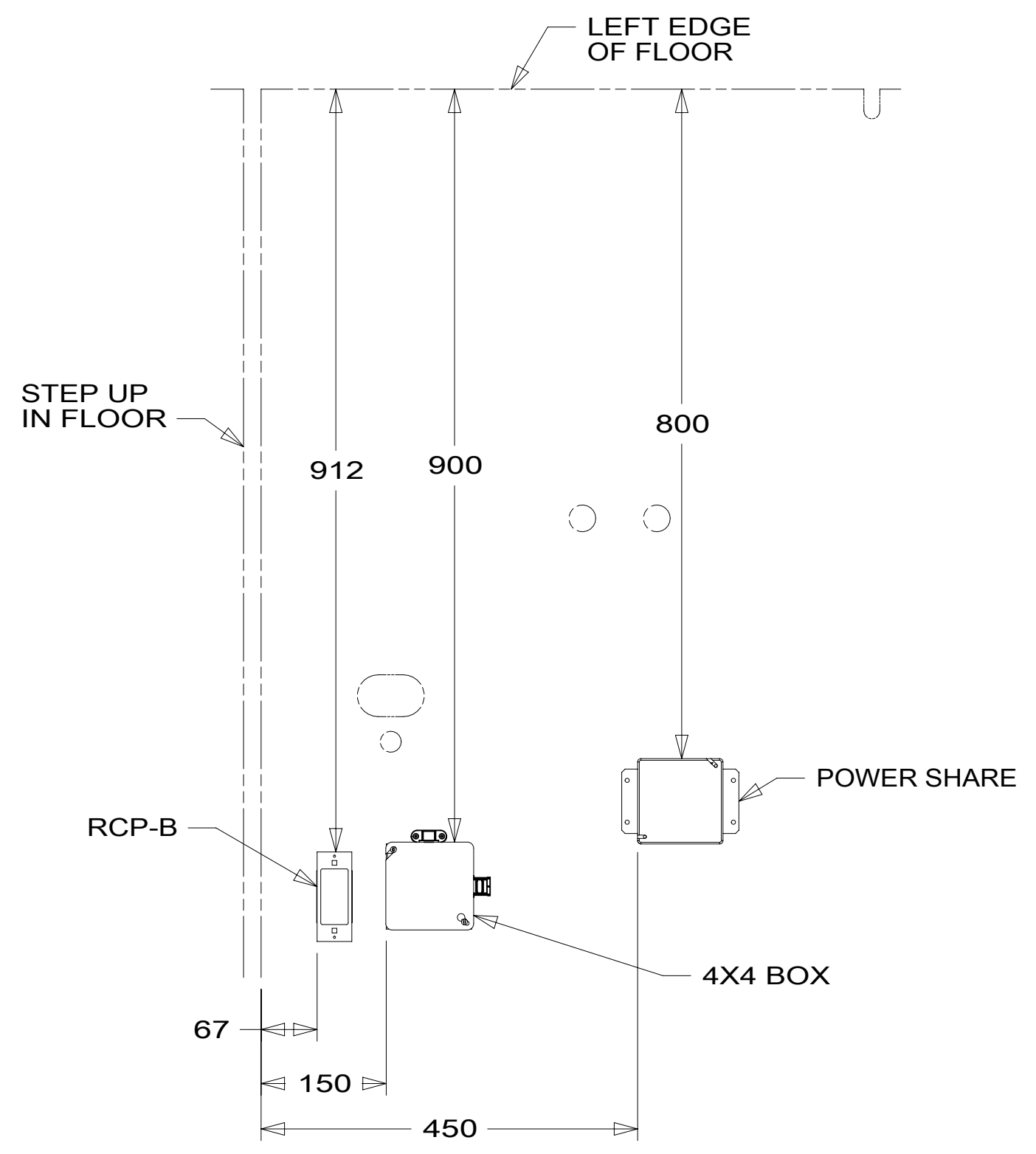


DSNR:	ALL DIMENSIONS ARE IN MILLIMETERS	
DFFR:	MATERIAL:	
UNSPECIFIED TOLERANCES:		
WHOLE DIM (X)	: 3	
ONE-PLACE (X.X)	: 1.5	
TWO-PLACE (X.XX)	: 0.50	
ANGLE	: 1°	
REFER TO ES0018 FOR FASTENER TIGHTENING GUIDELINES	WEIGHT: (LBS)	FIRST USED: 17 331D

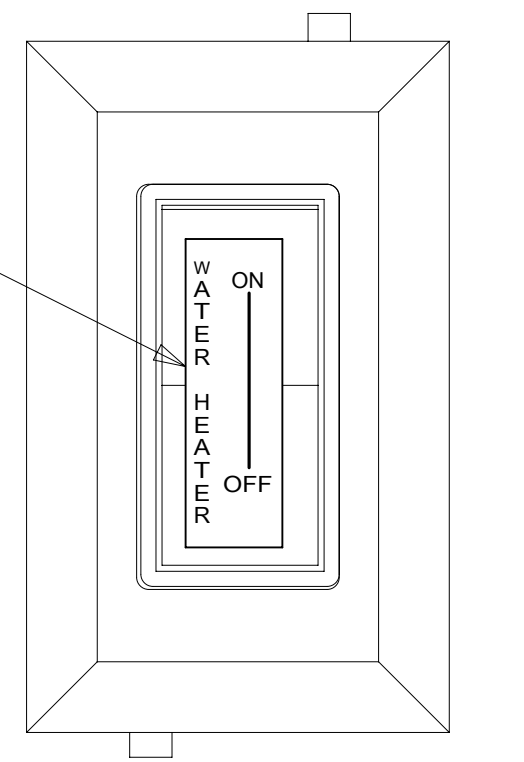
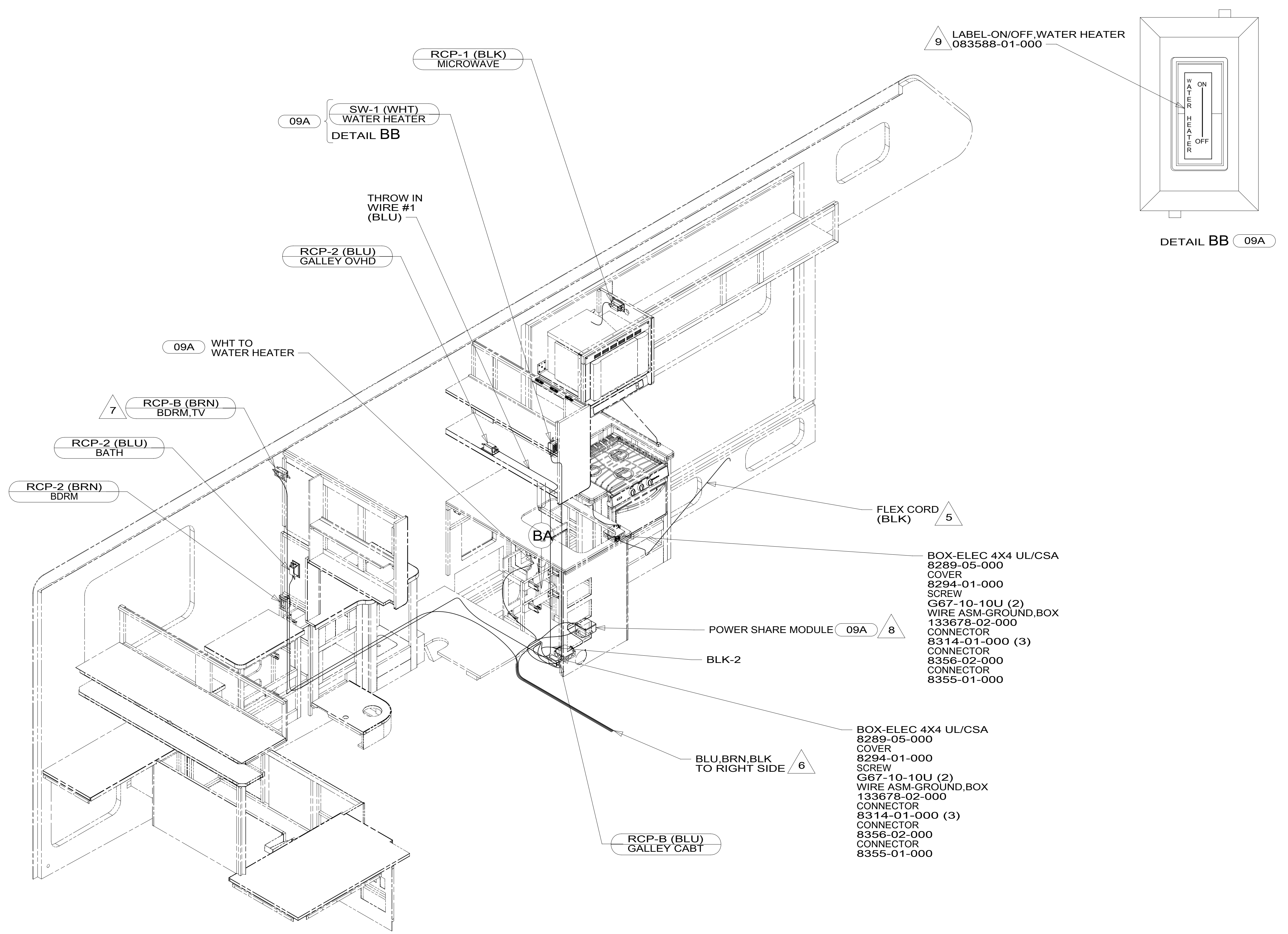
DESCRIPTION:		
WIRING INSTL-BODY, 110V		
SHEET: 1 OF 4	ITEM/PART NO: 000004968 / 31220501000	REV:
REF:		1 09-Dec-2016

8 7 6 5 4 3 2 1

8 7 6 5 4 3 2 1



VIEW BA



DETAIL BB 09A

- NOTES:
- 9 APPLY LABEL DIRECTLY TO THE FACE OF THE SWITCH.
 - 8 SEE LOAD CENTER/ATS ASM FOR ADDITIONAL INFORMATION.
 - 7 SEE WIRING INSTL-TV/DVD FOR ADDITIONAL INFORMATION.
 - 6 CABLES ROUTED IN UNDER FLOOR WIRE TROUGH.
 - 5 PART OF WIRE ASM-CHASSIS.
 - 4. FOR MORE INFORMATION SEE WIRING DIAGRAM-BODY,110V.
 - 3. ALL GROUND WIRE TO BE COVERED WITH TUBING 8041-02-000.
 - 2. ALL 110V WIRE TO BE CLAMPED WITH CLAMP 10497-05-000 WITHIN 200MM OF OUTLET BOXES, USE SCREW G67-10-12B.
 - 1. AT MINIMUM ALL WIRES TO BE SUPPORTED AND SECURED PER CODE REQUIREMENTS. USE CLAMP 10495 OR 10497 OR WIRE TIE 8343 OR 108046 AND SCREW G67-XX-XXX OR G56-XX-XXX AS APPROPRIATE FOR INSTALLATION.

- BOX-ELEC 4X4 UL/CSA 8289-05-000 COVER 8294-01-000 SCREW G67-10-10U (2) WIRE ASM-GROUND,BOX 133678-02-000 CONNECTOR 8314-01-000 (3) CONNECTOR 8356-02-000 CONNECTOR 8355-01-000

- BOX-ELEC 4X4 UL/CSA 8289-05-000 COVER 8294-01-000 SCREW G67-10-10U (2) WIRE ASM-GROUND,BOX 133678-02-000 CONNECTOR 8314-01-000 (3) CONNECTOR 8356-02-000 CONNECTOR 8355-01-000

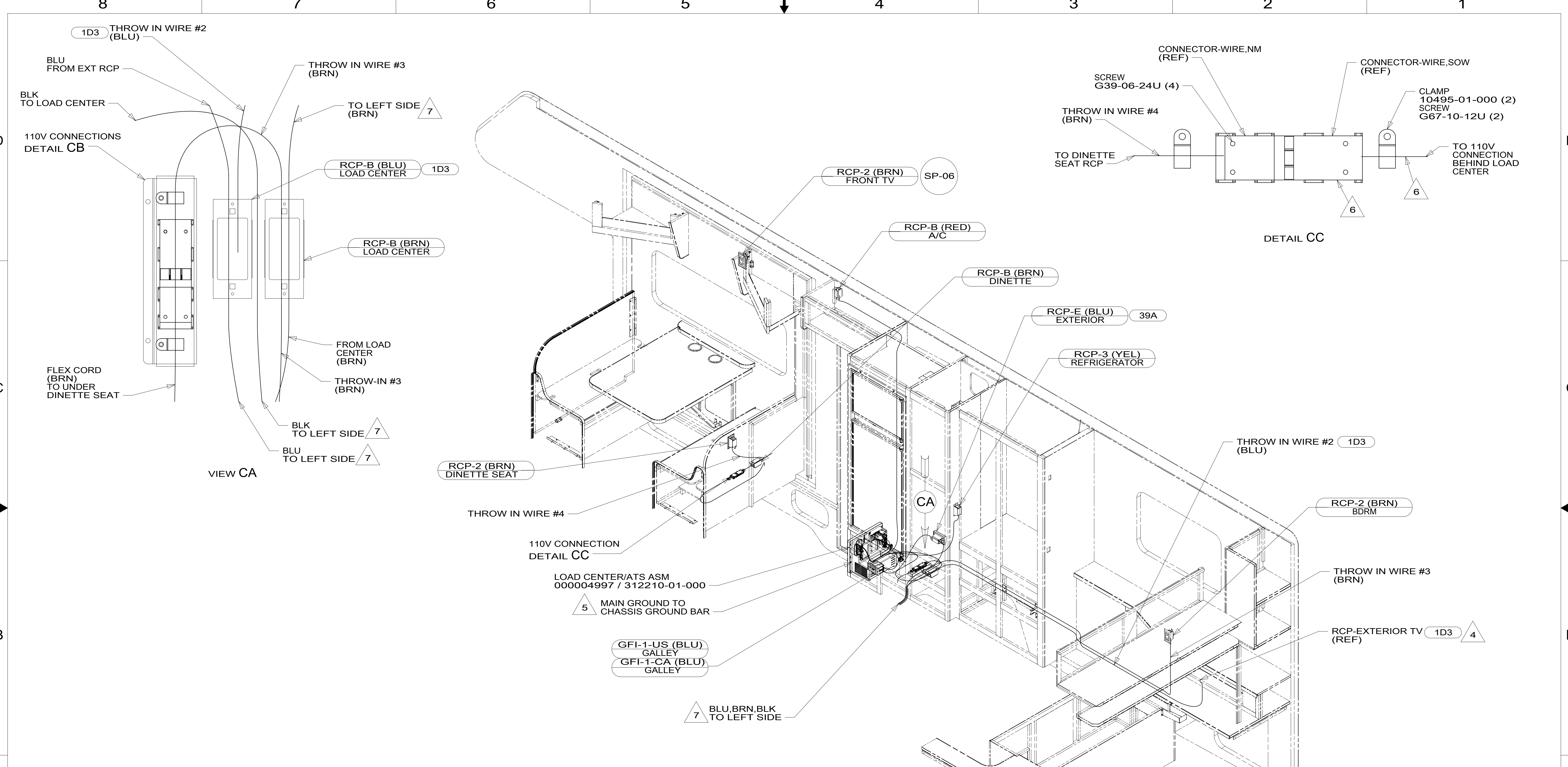
- 09A PREMIUM PACKAGE
- 265 CODES/STANDARDS-CSA/CMVSS
- 1B1 CODES/STANDARDS USA

FOR ELECTRICAL TORQUE SPECIFICATIONS SEE DWG NO. 128783-01-000

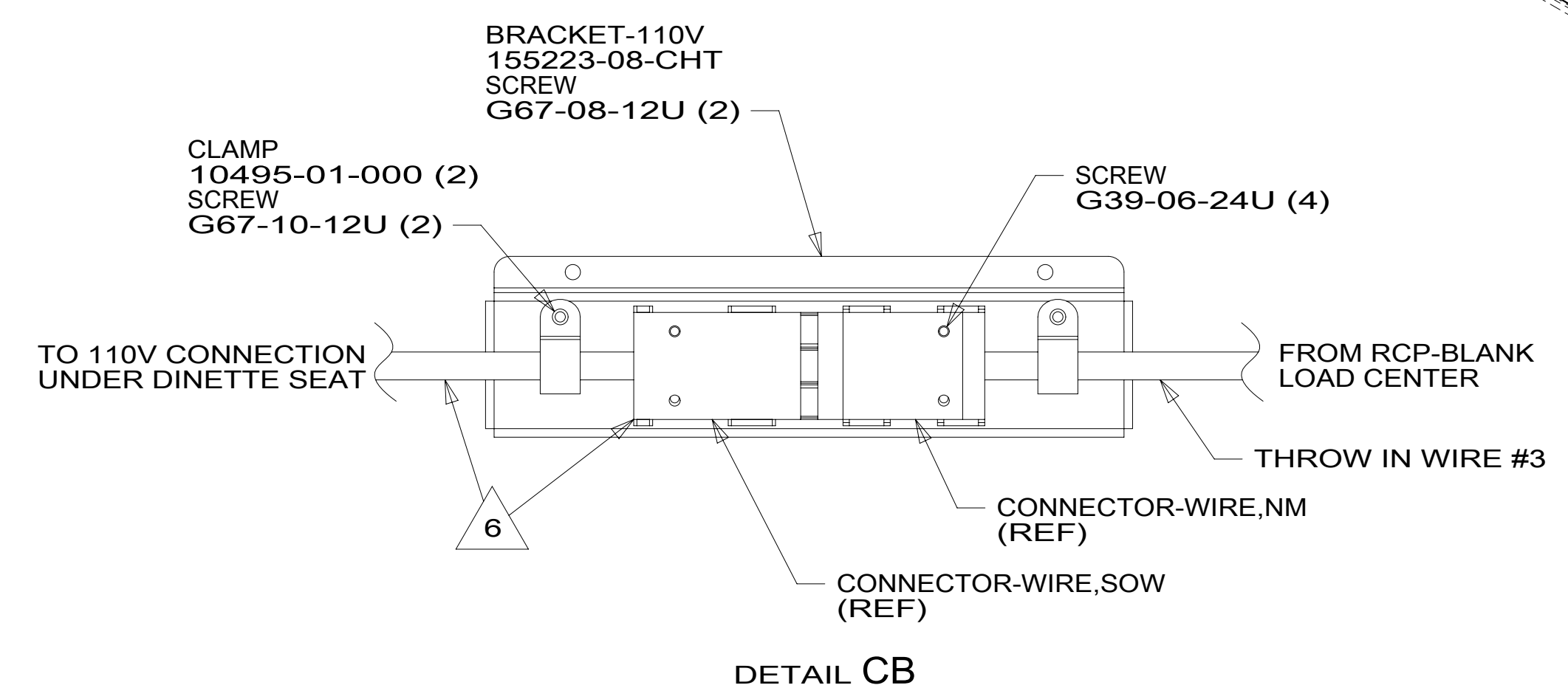
FOR ELECTRICAL CALLOUTS SEE DWG NO. 121339-01-000

DESCRIPTION: WIRING INSTL-BODY,110V		
SHEET: 2 OF 4	ITEM/PART NO: 000004968 / 31220501000	REV

8 7 6 5 4 3 2 1 09-Dec-2016



- NOTES:
- 7 CABLES ROUTED IN UNDER FLOOR WIRE TROUGH.
 - 6 CORD & CONNECTOR ARE PART OF WIRE ASM-CHASSIS.
 - 5 SEE LOAD CENTER/ATS ASM FOR ADDITIONAL INFORMATION.
 - 4 SEE ENTERTAINMENT CTR COMPL-TV FOR ADDITIONAL INFORMATION.
 - 3. ALL GROUND WIRE TO BE COVERED WITH TUBING 8041-02-000.
 - 2. ALL 110V WIRE TO BE CLAMPED WITH CLAMP 10497-05-000 WITHIN 200MM OF OUTLET BOXES, USE SCREW G67-10-12B.
 - 1. AT MINIMUM ALL WIRES TO BE SUPPORTED AND SECURED PER CODE REQUIREMENTS. USE CLAMP 10495 OR 10497 OR WIRE TIE 8343 OR 108046 AND SCREW G67-XX-XXX OR G56-XX-XXX AS APPROPRIATE FOR INSTALLATION.

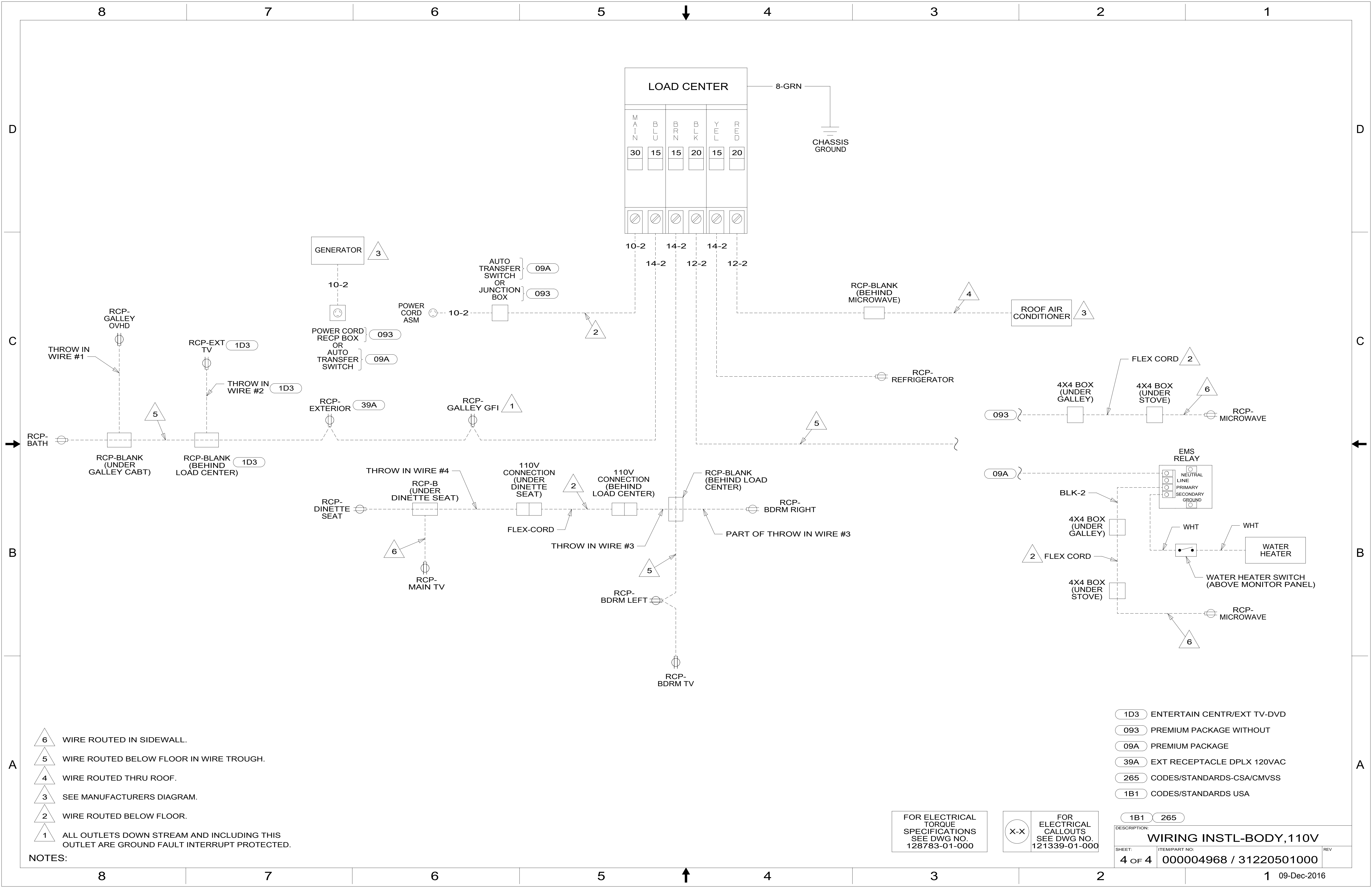


FOR ELECTRICAL TORQUE SPECIFICATIONS SEE DWG NO. 128783-01-000

FOR ELECTRICAL CALLOUTS SEE DWG NO. 121339-01-000

- 1D3 ENTERTAIN CENTR/EXT TV-DVD
- 39A EXT RECEPTACLE DPLX 120VAC
- 265 CODES/STANDARDS-CSA/CMVSS
- 1B1 CODES/STANDARDS USA

DESCRIPTION:		WIRING INSTL-BODY, 110V	
SHEET:	ITEM/PART NO.:	REV:	
3 OF 4	000004968 / 31220501000		



- NOTES:**
- 6 WIRE ROUTED IN SIDEWALL.
 - 5 WIRE ROUTED BELOW FLOOR IN WIRE TROUGH.
 - 4 WIRE ROUTED THRU ROOF.
 - 3 SEE MANUFACTURERS DIAGRAM.
 - 2 WIRE ROUTED BELOW FLOOR.
 - 1 ALL OUTLETS DOWN STREAM AND INCLUDING THIS OUTLET ARE GROUND FAULT INTERRUPT PROTECTED.

- 1D3 ENTERTAIN CENTRE/EXT TV-DVD
- 093 PREMIUM PACKAGE WITHOUT
- 09A PREMIUM PACKAGE
- 39A EXT RECEPTACLE DPLX 120VAC
- 265 CODES/STANDARDS-CSA/CMVSS
- 1B1 CODES/STANDARDS USA

FOR ELECTRICAL TORQUE SPECIFICATIONS SEE DWG NO. 128783-01-000

FOR ELECTRICAL CALLOUTS SEE DWG NO. 121339-01-000

DESCRIPTION: **WIRING INSTL-BODY, 110V**

SHEET: 4 OF 4 ITEM/PART NO.: 000004968 / 31220501000 REV: 1

1B1 265

09-Dec-2016