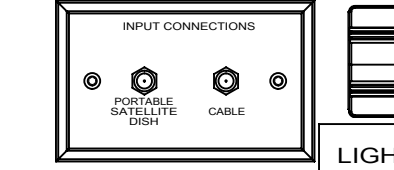


PLATE-WALL
149557-03-CHT
SCREW
G39-08-08U (2)

SWITCH-SERVICE LAMP
108357-21-000
ACTUATOR
108356-01-CHT

SWITCH-BLANK
096241-03-000



CONTROL-CHARGE
SOLAR 30 AMP
191278-01-000
SCREW
G39-10-12U (4)
DETAIL AB

WIRE ASM-AUX HOLDING
151316-02-000
(2ND GRAY TANK)

WIRE ASM-COACH
000005244 / 312274-01-000

2-PIN HOUSING
TO WATER PUMP
BRACKET
185915-01-CHT
SCREW
G39-10-12U (4)

PORT-SOLAR, SINGLE
191558-01-000
SCREW
G39-10-12U (4)

WIRE ASM-MAIN HOLDING
151317-02-000

TO GROUND BAR

THERMOCOUPLE
DETAIL AC

TECMA TANK SENSOR KIT
170062-03-000
TECMA SENSOR HARNESS
170062-05-000
CONNECT TANK SENSORS
TO TOILET
ROUTE WITH COACH HARNESS
TO TOILET

WIRE ASM-AUX HOLDING
151316-02-000

MAIN DROP THROUGH TO 110V
AND 12V BREAKER PANELS

TO SIDEWALL

PANEL-RECEPTACLE
151376-01-CHT
SCREW
G67-10-12B (4)

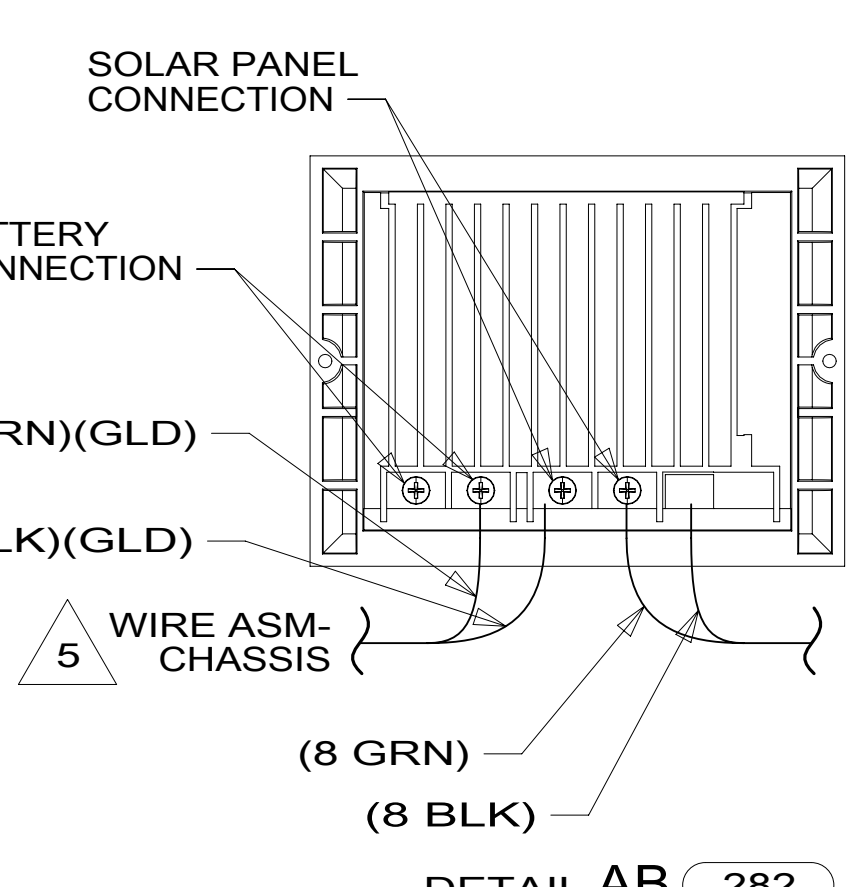
WIRE ASM-TANK, WATER
151317-01-000

CLAMP-CLOSED
10497-03-000 (2)

BRACKET
185915-01-CHT (3)
SCREW
G39-10-12U (12)

MAIN DROP THROUGH FLOOR
TO MONITOR PANEL AND
ROOF CONNECTIONS

BRACKET-ELECTRICAL
147793-02-CHT
SCREW
G39-08-12U (4)
RECEPTACLE-12V
132958-01-000
DETAIL CB



THERMOSTAT-LOW TEMP
169741-14-CHT
SCREW
G11-06-08U (2)
LABEL-THERMOSTAT
171639-02-CHT

VIEW AA

GROMMET
071015-18-000

CLAMP
10497-09-000 (2)
SCREW
G39-10-12U (2)
CONDUIT
41953-07-000 (5FT)

COVER-WIRE
170196-03-CHT

DETAIL AC

- 6 WIRE TO BE MARKED BY WRAP OF YEL TAPE 19 MM WIDE WITHIN 50 MM OF END.
- 5 WIRE TO BE MARKED BY WRAP OF GRN TAPE 19 MM WIDE WITHIN 50 MM OF END.
- 4 ADD CONDUIT TO COVER CAPILLARY TUBE COMPLETELY. CLAMP OR WIRE TIE TO FRAME TUBES.
- 3 WIRE PASSES UP THRU FLOOR IN THIS AREA.

2. ROUTE TANK SENSOR WIRES SO THEY DO NOT PASS OVER SENSORS. USE WIRE TIE MOUNT 155366-01-000 AND WIRE TIE 8343-01-000 AS NEEDED. TANK SURFACE MUST BE CLEANED USING ISOPROPYL ALCOHOL AND PRIMED WITH PRIMER 94.
1. AT MINIMUM ALL WIRES TO BE SUPPORTED AND SECURED PER CODE REQUIREMENTS. USE CLAMP 10495 OR 10497 OR WIRE TIE 8343 OR 108046 AND SCREW G67-XX-XXX OR G56-XX-XXX AS APPROPRIATE FOR INSTALLATION.

NOTES:

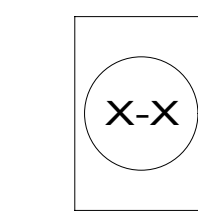
- 282 SOLAR PANEL - 100 WATT
- 11E REFRIGERATOR/FREEZER PORTABL
- 265 CODES/STANDARDS-CSA/CMVSS
- 1B1 CODES/STANDARDS USA

WINNEBAGO
COPYRIGHT 2016 WINNEBAGO INDUSTRIES, INC.

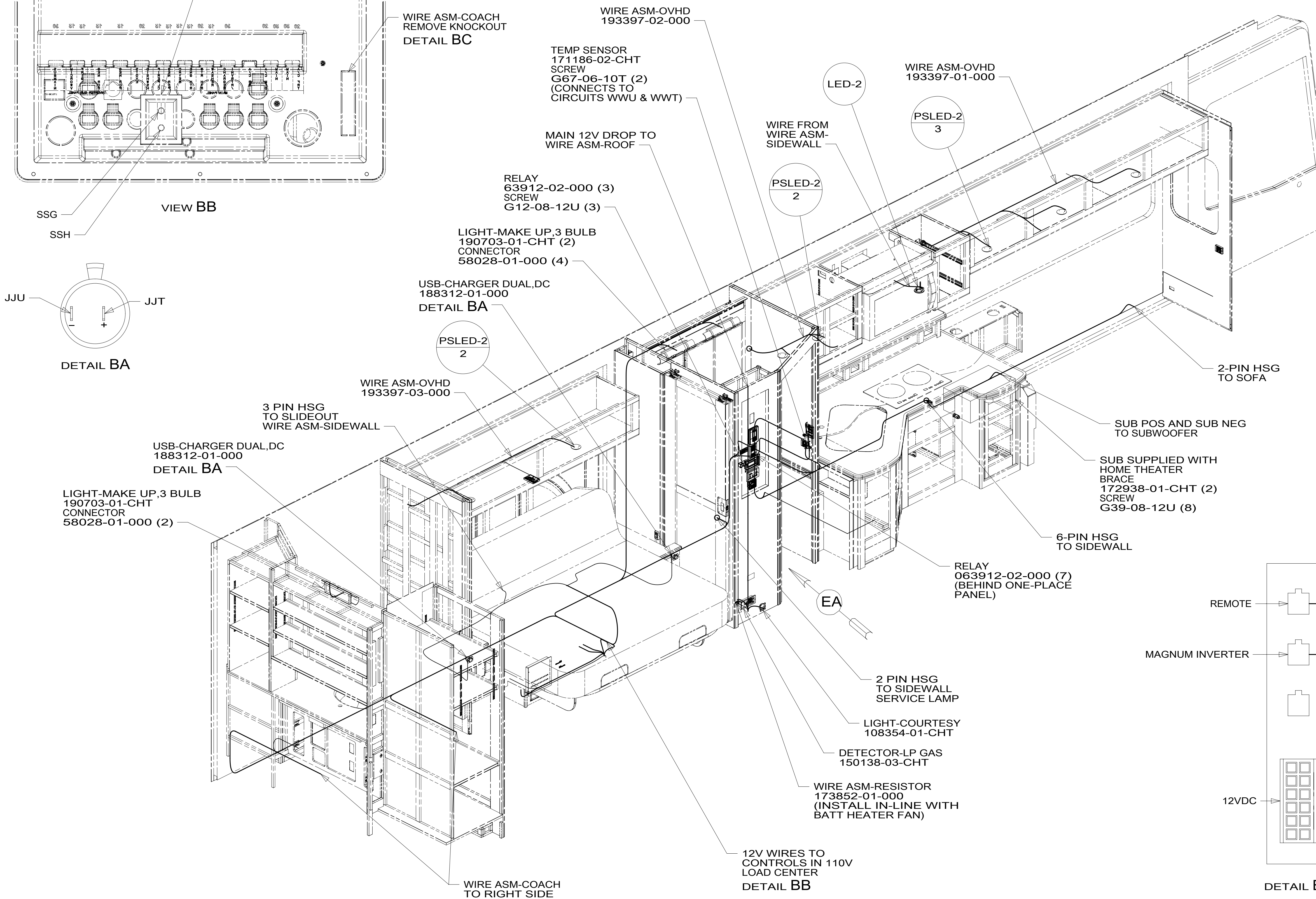
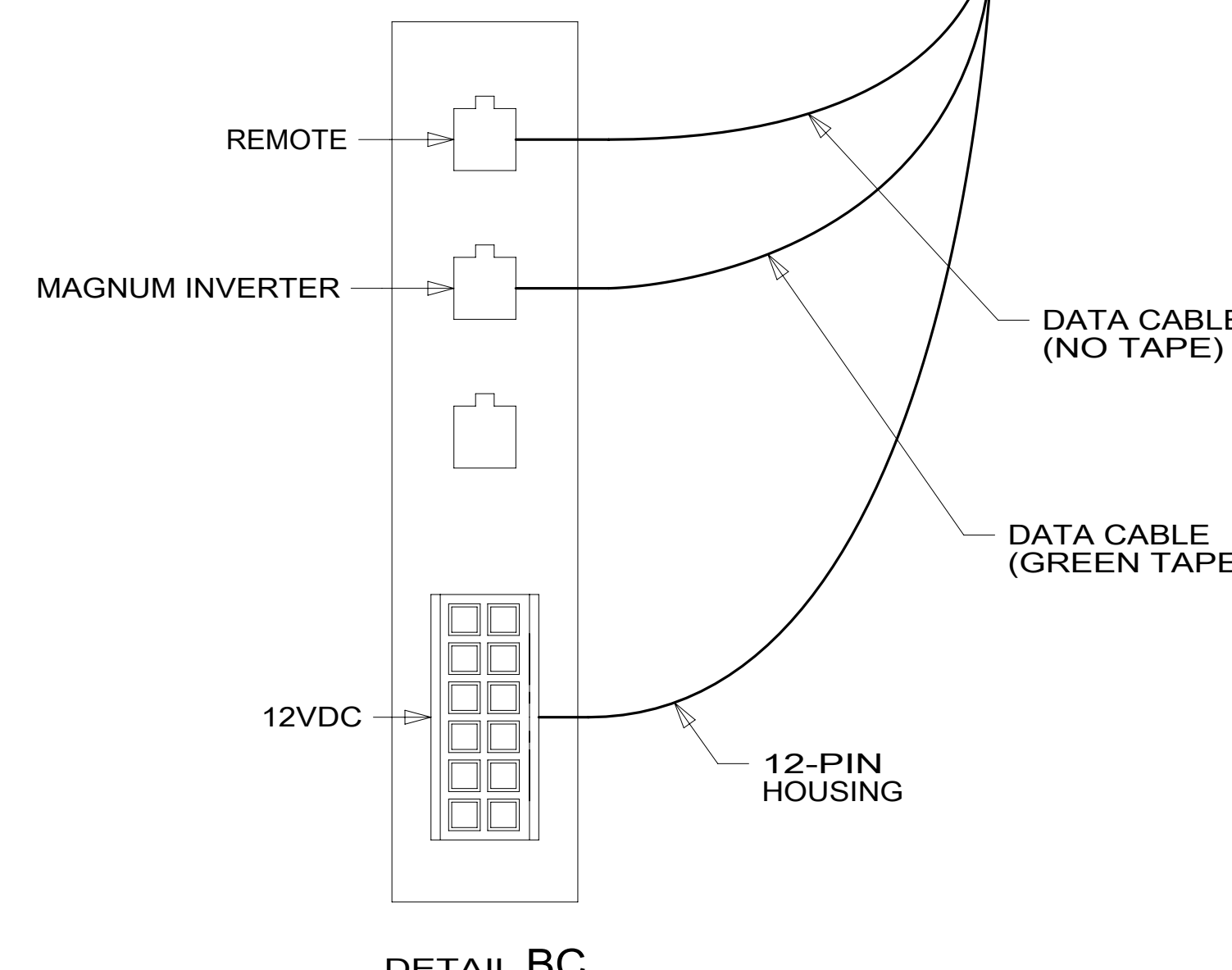
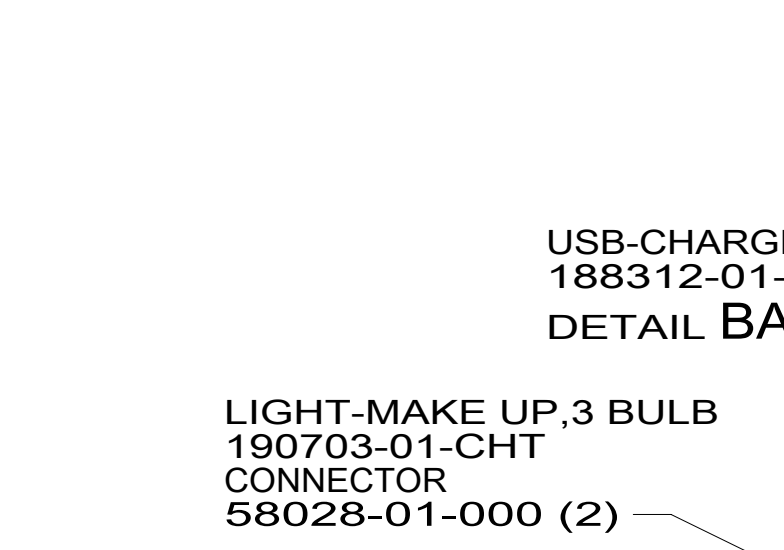
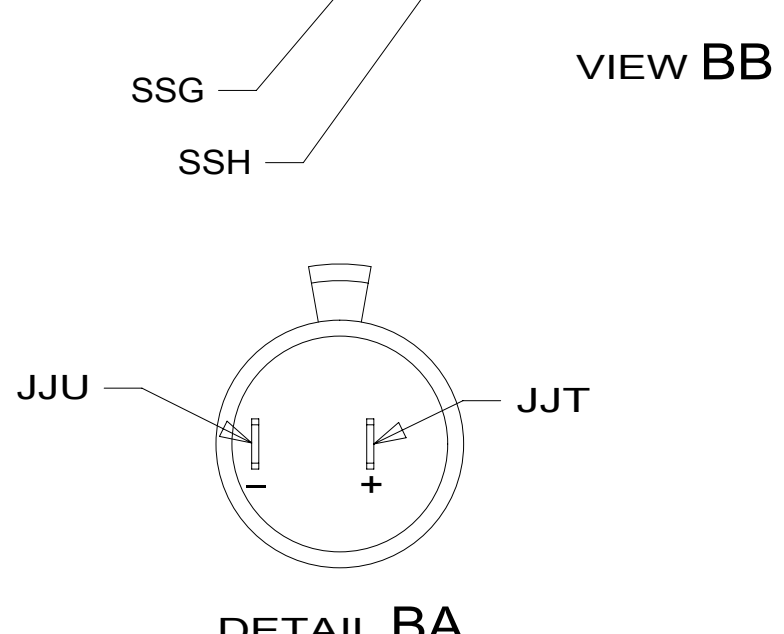
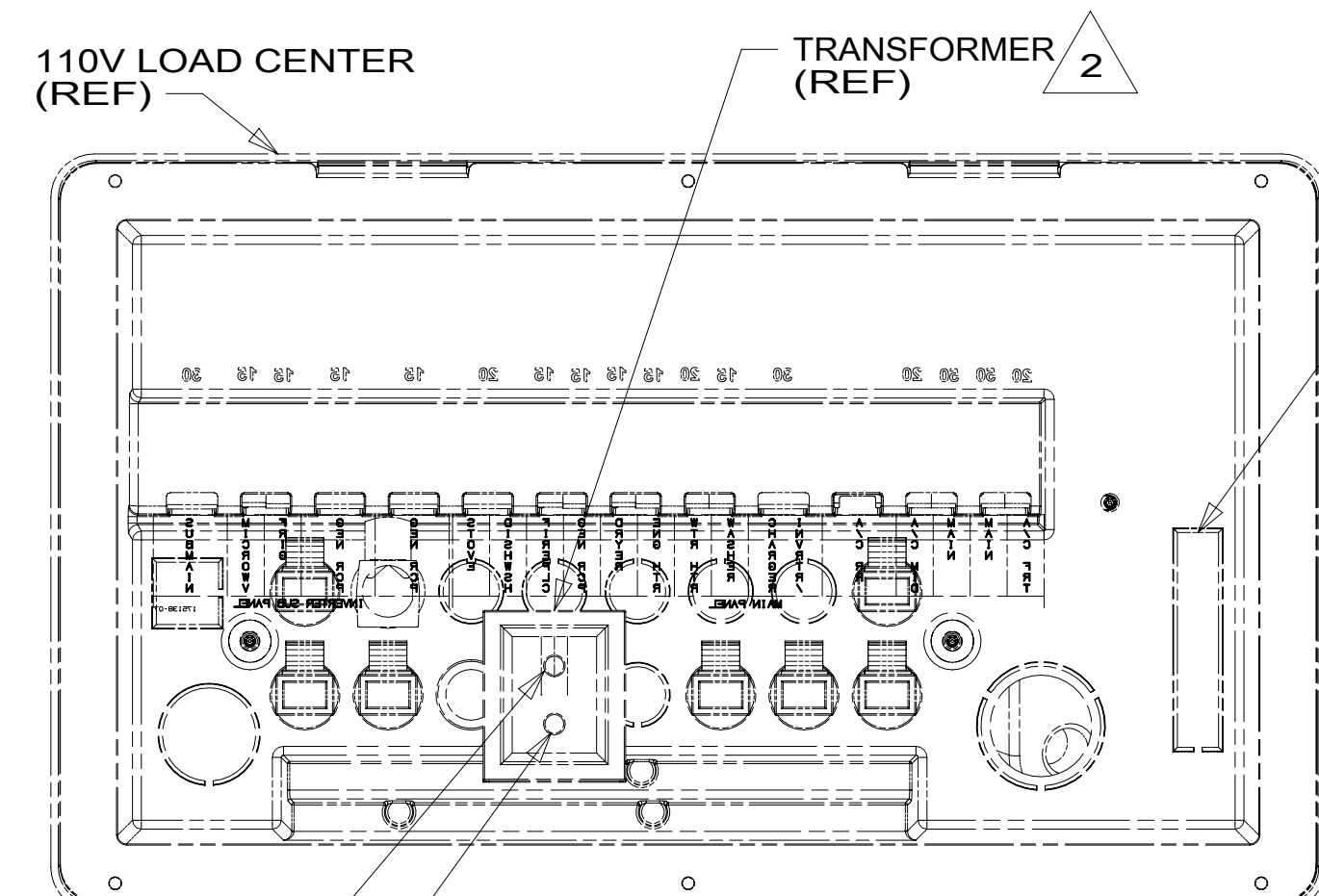
DSNR:	ALL DIMENSIONS ARE IN MILLIMETERS
DIFFR:	
UNSPECIFIED TOLERANCES:	MATERIAL:
WHOLE DIM (X) ± 3	
ONE-PLACE (X.X) ± 1.5	
TWO-PLACE (X.XX) ± 0.50	
ANGLE ± 1°	
REFER TO ES0018 FOR FASTENER TIGHTENING GUIDELINES	WEIGHT: (LBS) FIRST USED: 17 P42E
DESCRIPTION: WIRING INSTL-BODY, 12V	
SHEET: 1 OF 11	ITEM/PART NO: 000004785 / 31218001000
REF:	1 16-Jan-2017

FOR ELECTRICAL TORQUE SPECIFICATIONS SEE DWG NO. 128783-01-000

FOR ELECTRICAL CALLOUTS SEE DWG NO. 121339-01-000



LO1-3
8



2 SEE LOAD CENTER/ATS ASM FOR ADDITIONAL INFORMATION.

1. AT MINIMUM ALL WIRES TO BE SUPPORTED AND SECURED PER CODE REQUIREMENTS. USE CLAMP 10495 OR 10497 OR WIRE TIE 8343 OR 108046 AND SCREW G67-XX-XXX OR G56-XX-XXX AS APPROPRIATE FOR INSTALLATION.

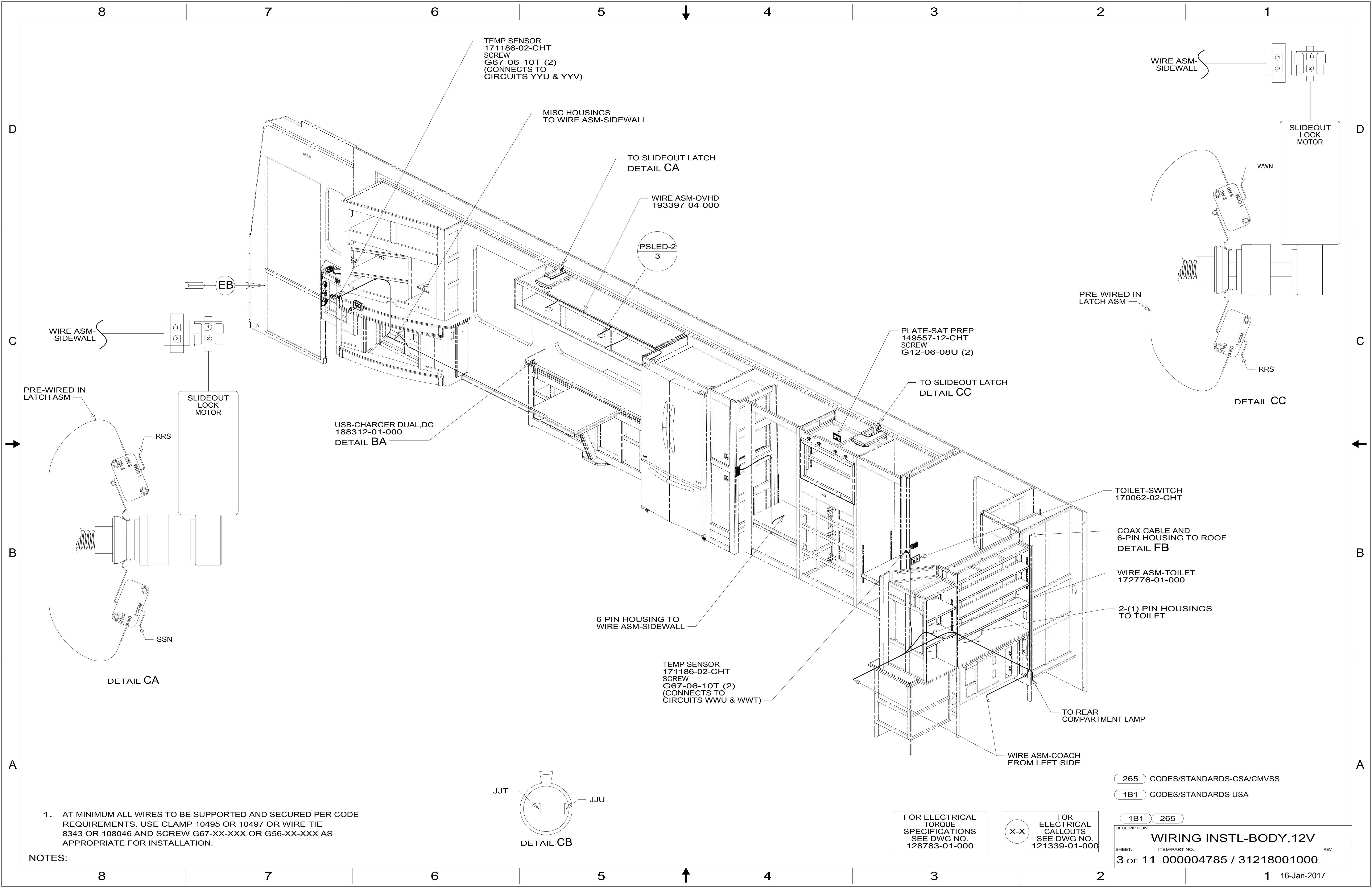
NOTES:

265 CODES/STANDARDS-CSA/CMVSS
1B1 CODES/STANDARDS USA

FOR ELECTRICAL TORQUE SPECIFICATIONS SEE DWG NO. 128783-01-000

FOR ELECTRICAL CALLOUTS SEE DWG NO. 121339-01-000

1B1 265
DESCRIPTION: WIRING INSTL-BODY, 12V
SHEET: 2 OF 11 ITEM/PART NO.: 000004785 / 31218001000 REV: 16-Jan-2017



TEMP SENSOR
171186-02-CHT
SCREW
G67-06-10T (2)
(CONNECTS TO
CIRCUITS YYU & YYV)

MISC HOUSINGS
TO WIRE ASM-SIDEWALL

TO SLIDEOUT LATCH
DETAIL CA

WIRE ASM-OVHD
193397-04-000

PSLED-2
3

WIRE ASM-
SIDEWALL

SLIDEOUT
LOCK
MOTOR

WWN

PRE-WIRED IN
LATCH ASM

RRS

DETAIL CC

WIRE ASM-
SIDEWALL

EB

SLIDEOUT
LOCK
MOTOR

RRS

PRE-WIRED IN
LATCH ASM

USB-CHARGER DUAL,DC
188312-01-000
DETAIL BA

PLATE-SAT PREP
149557-12-CHT
SCREW
G12-06-08U (2)

TO SLIDEOUT LATCH
DETAIL CC

6-PIN HOUSING TO
WIRE ASM-SIDEWALL

TEMP SENSOR
171186-02-CHT
SCREW
G67-06-10T (2)
(CONNECTS TO
CIRCUITS WWU & WWT)

TOILET-SWITCH
170062-02-CHT

COAX CABLE AND
6-PIN HOUSING TO ROOF
DETAIL FB

WIRE ASM-TOILET
172776-01-000

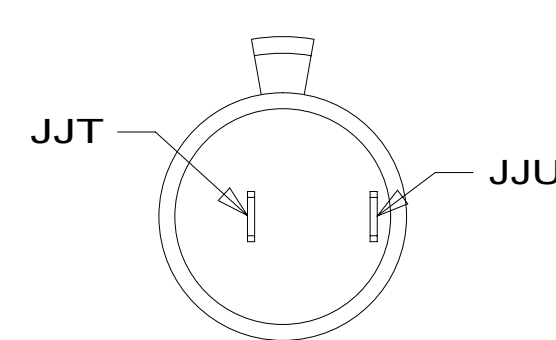
2-(1) PIN HOUSINGS
TO TOILET

DETAIL CA

SSN

TO REAR
COMPARTMENT LAMP

WIRE ASM-COACH
FROM LEFT SIDE



DETAIL CB

265 CODES/STANDARDS-CSA/CMVSS

1B1 CODES/STANDARDS USA

1B1 265

DESCRIPTION:
WIRING INSTL-BODY, 12V

SHEET: 3 OF 11 ITEM/PART NO: 000004785 / 31218001000 REV

FOR ELECTRICAL
TORQUE
SPECIFICATIONS
SEE DWG NO.
128783-01-000

FOR
ELECTRICAL
CALLOUTS
SEE DWG NO.
121339-01-000

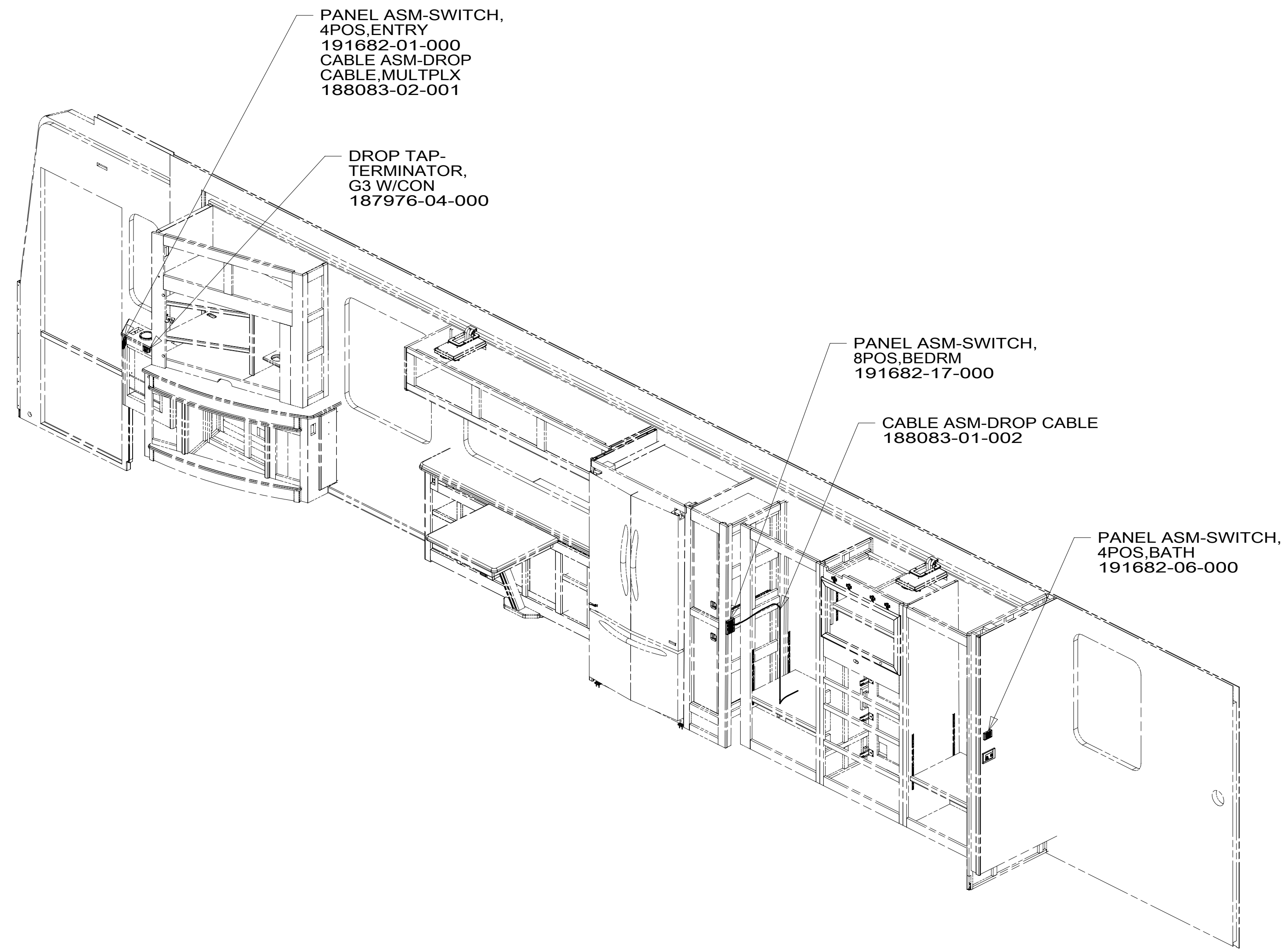
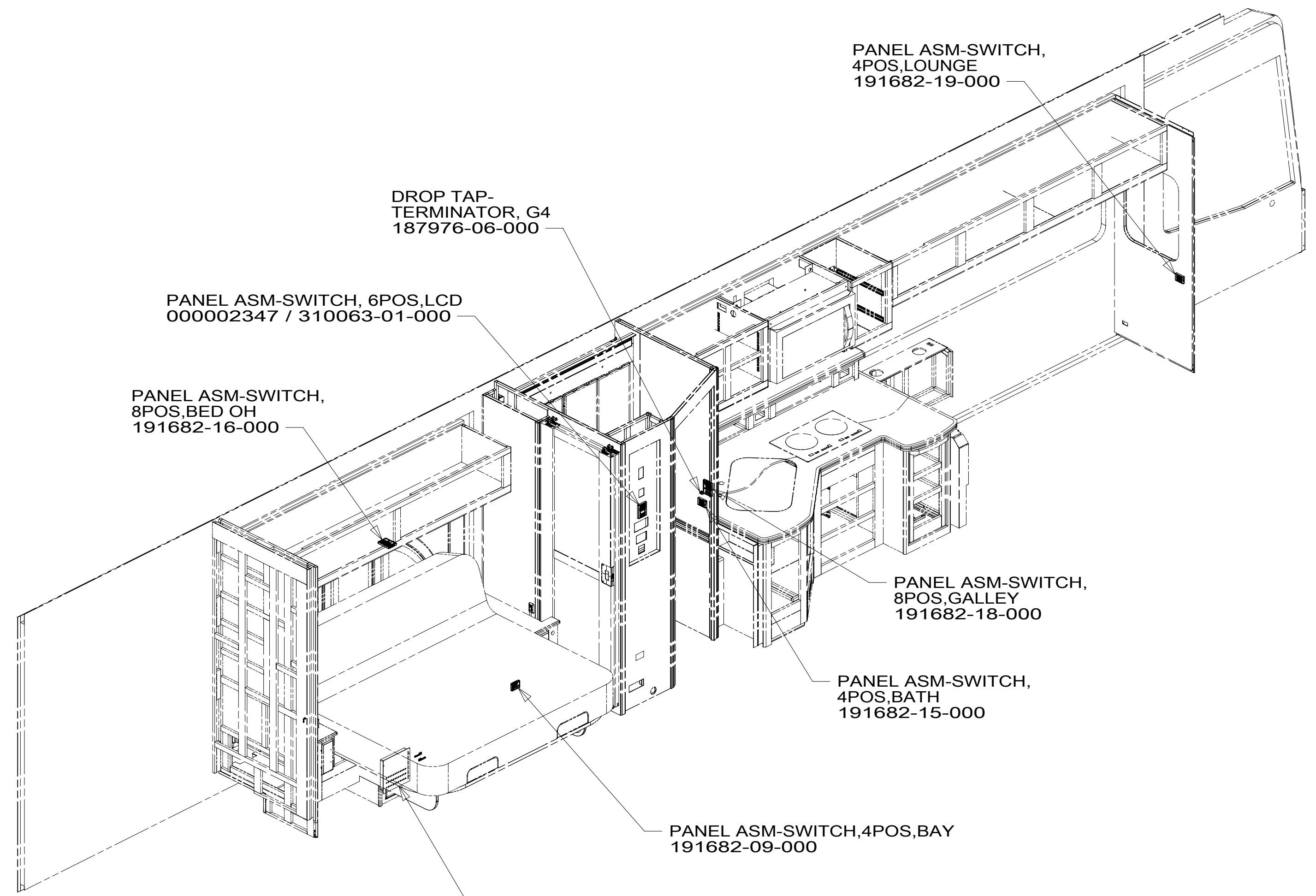
NOTES:
1. AT MINIMUM ALL WIRES TO BE SUPPORTED AND SECURED PER CODE REQUIREMENTS. USE CLAMP 10495 OR 10497 OR WIRE TIE 8343 OR 108046 AND SCREW G67-XX-XXX OR G56-XX-XXX AS APPROPRIATE FOR INSTALLATION.

8 7 6 5 4 3 2 1



D
C
B
A

D
C
B
A



8 7 6 5 4 3 2 1



FOR ELECTRICAL TORQUE SPECIFICATIONS SEE DWG NO. 128783-01-000

FOR ELECTRICAL CALLOUTS SEE DWG NO. 121339-01-000

265 CODES/STANDARDS-CSA/CMVSS
1B1 CODES/STANDARDS USA

DESCRIPTION:	1B1 265	
WIRING INSTL-BODY, 12V		
SHEET:	ITEM/PART NO.:	REV
4 OF 11	000004785 / 31218001000	

D

D

C

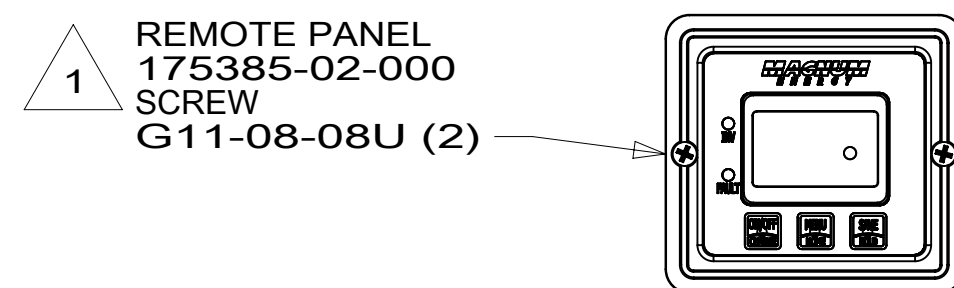
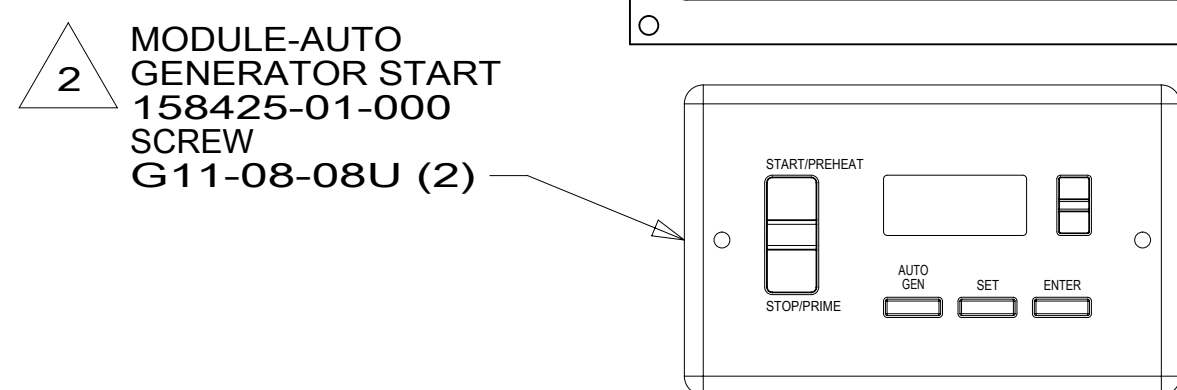
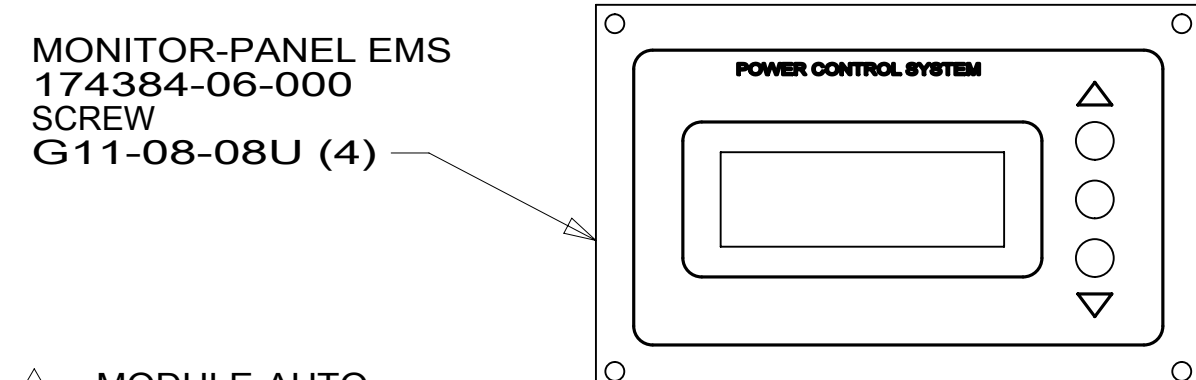
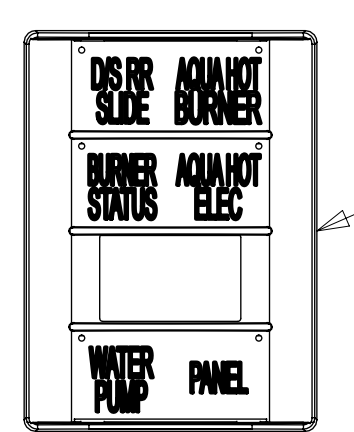
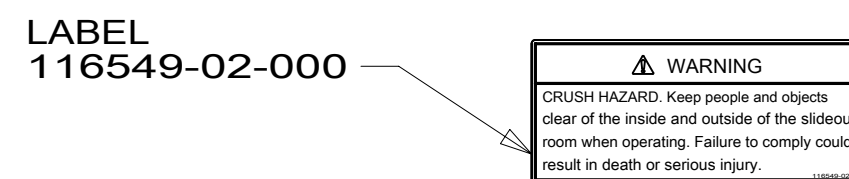
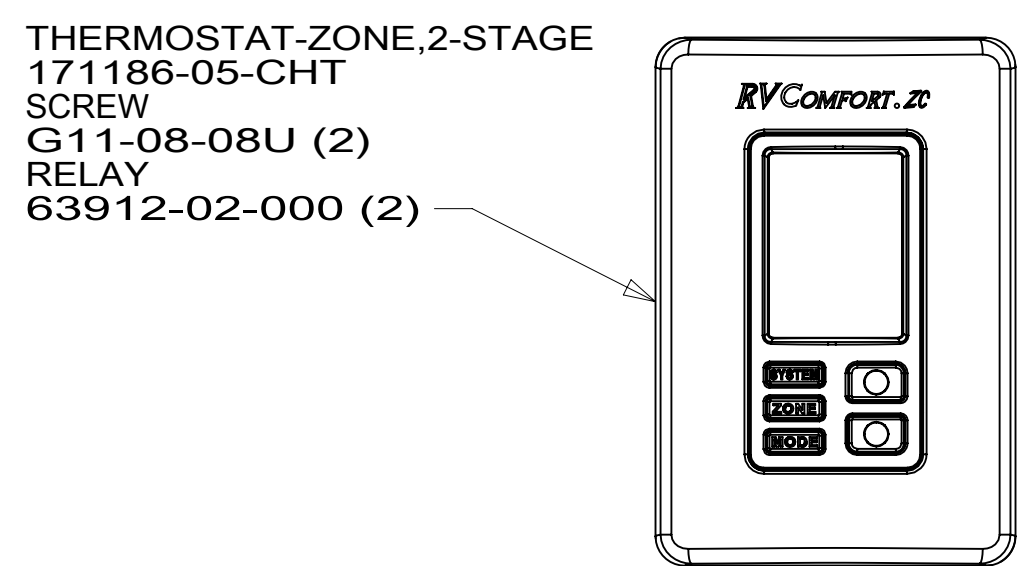
C

B

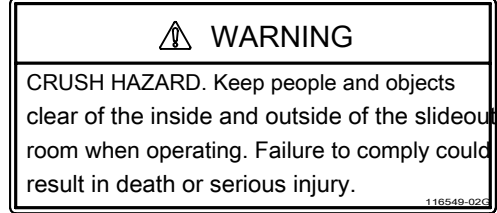
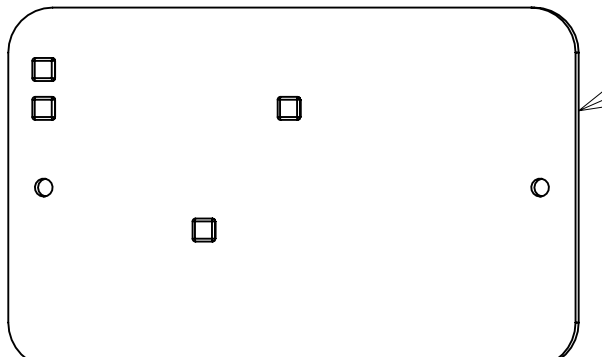
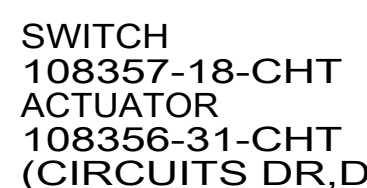
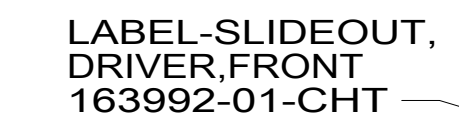
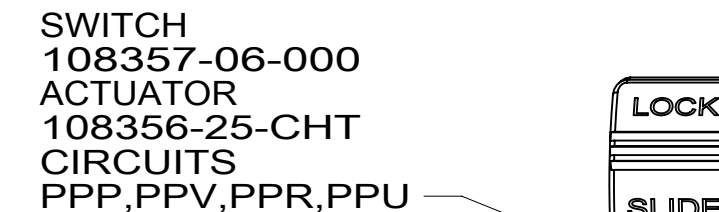
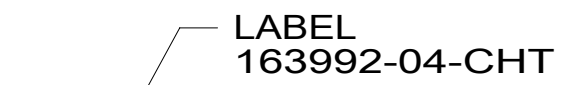
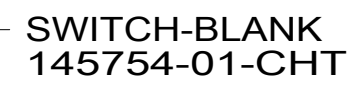
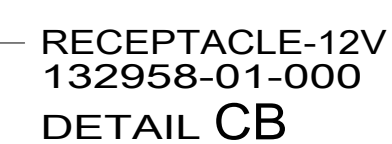
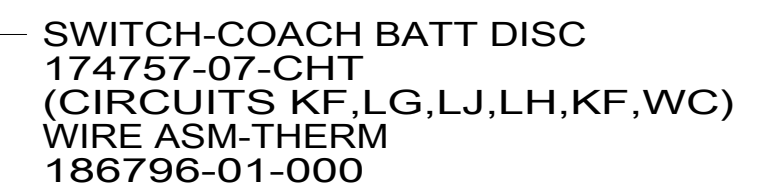
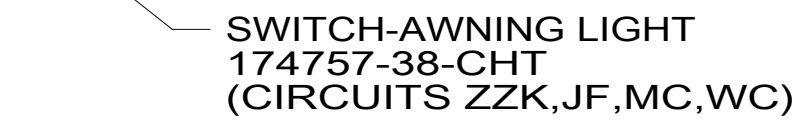
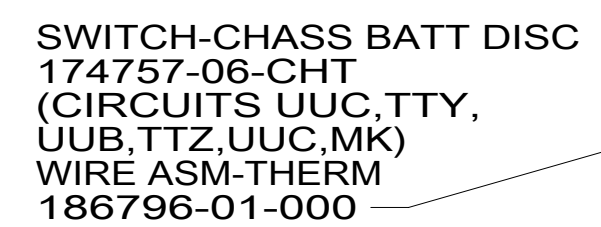
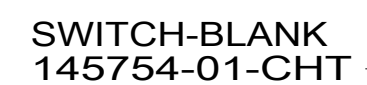
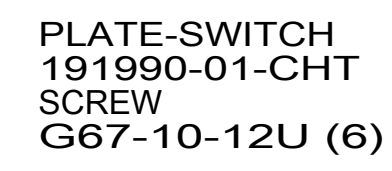
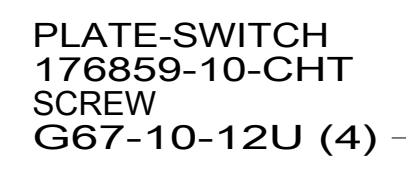
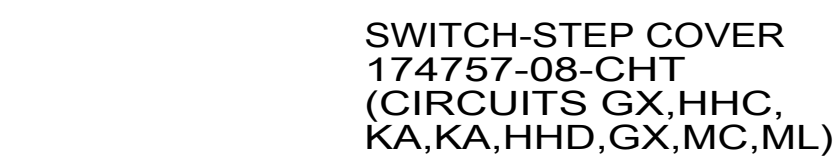
B

A

A



DETAIL EA



DETAIL EC

DETAIL EB

2 SET 'GEN TYPE' TO 'QD 6-8'.
SET 'SAFE TYPE' TO 'IGNITION'
SET 'SP SENSE' TO 'AFTER'
SEE OWNERS MANUAL FOR SETUP PROCEDURE.

1 SET 'BAT TYPE' TO 'AGM2'
SET 'LBCO' TO '11VDC'
SET 'BAT AHRS' TO '600 AH'
SEE OWNERS MANUAL FOR SETUP PROCEDURE.

NOTES:

265 CODES/STANDARDS-CSA/CMVSS

1B1 CODES/STANDARDS USA

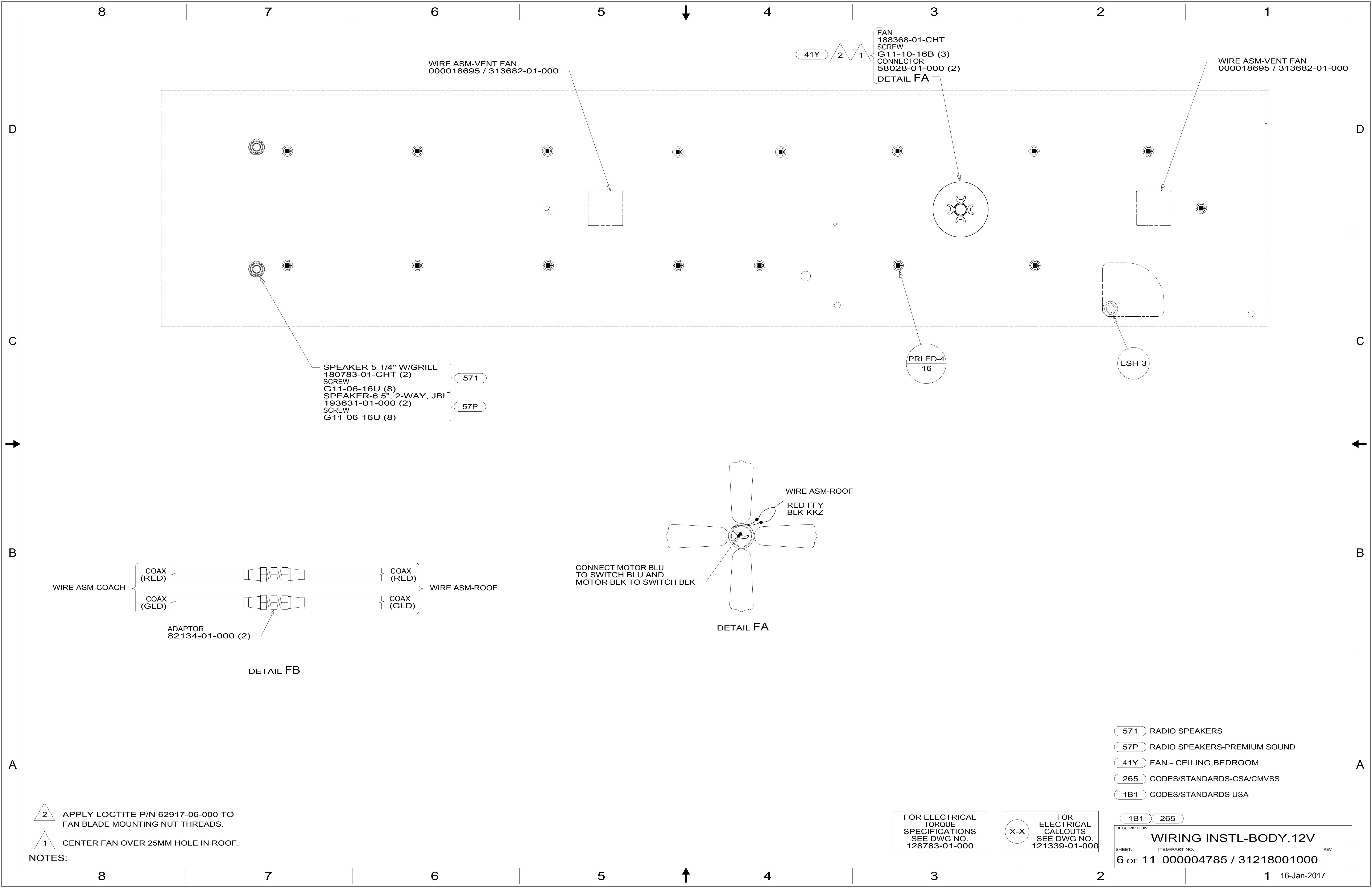
1B1 265

DESCRIPTION:
WIRING INSTL-BODY, 12V

SHEET: 5 of 11 ITEM/PART NO: 000004785 / 31218001000 REV

FOR ELECTRICAL
TORQUE
SPECIFICATIONS
SEE DWG NO.
128783-01-000

FOR
ELECTRICAL
CALLOUTS
SEE DWG NO.
121339-01-000



WIRE ASM-VENT FAN
000018695 / 313682-01-000

FAN
188368-01-CHT
SCREW
G11-10-16B (3)
CONNECTOR
58028-01-000 (2)
DETAIL FA

WIRE ASM-VENT FAN
000018695 / 313682-01-000

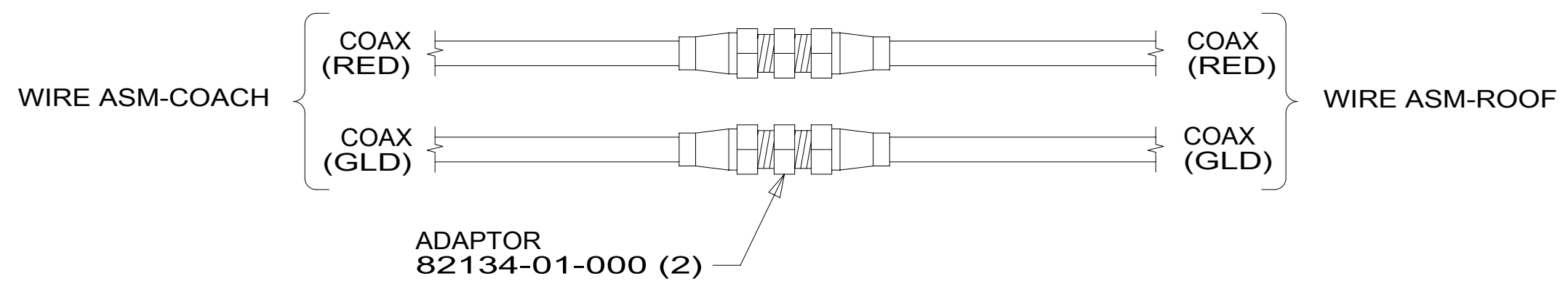
SPEAKER-5-1/4" W/GRILL
180783-01-CHT (2)
SCREW
G11-06-16U (8)
SPEAKER-6.5", 2-WAY, JBL
193631-01-000 (2)
SCREW
G11-06-16U (8)

571

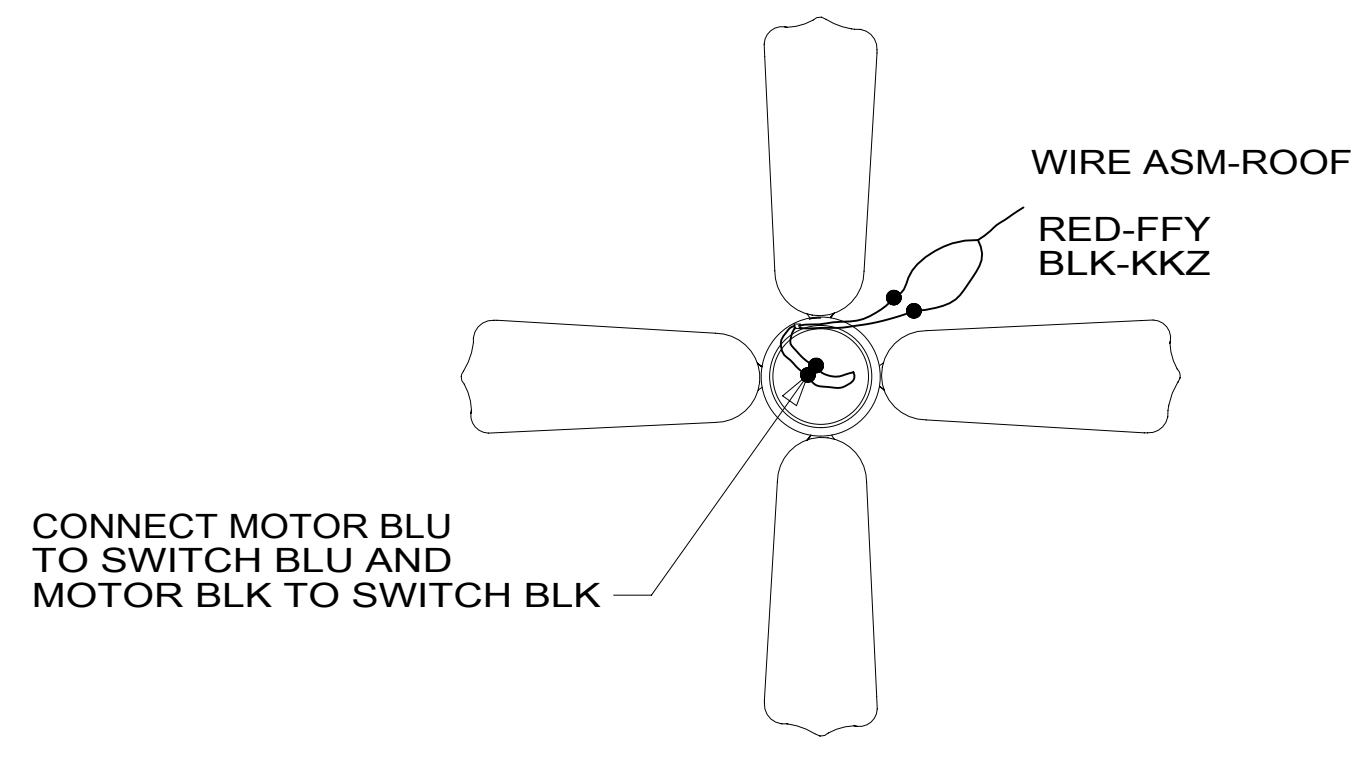
57P

PRLED-4
16

LSH-3



DETAIL FB



DETAIL FA

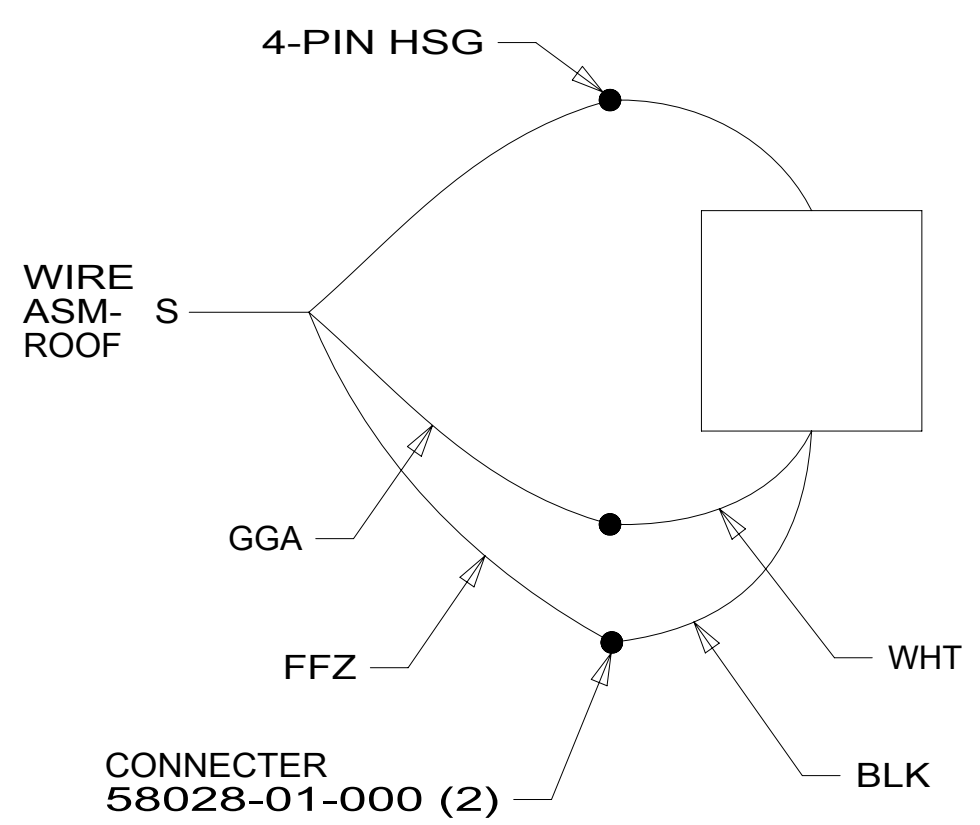
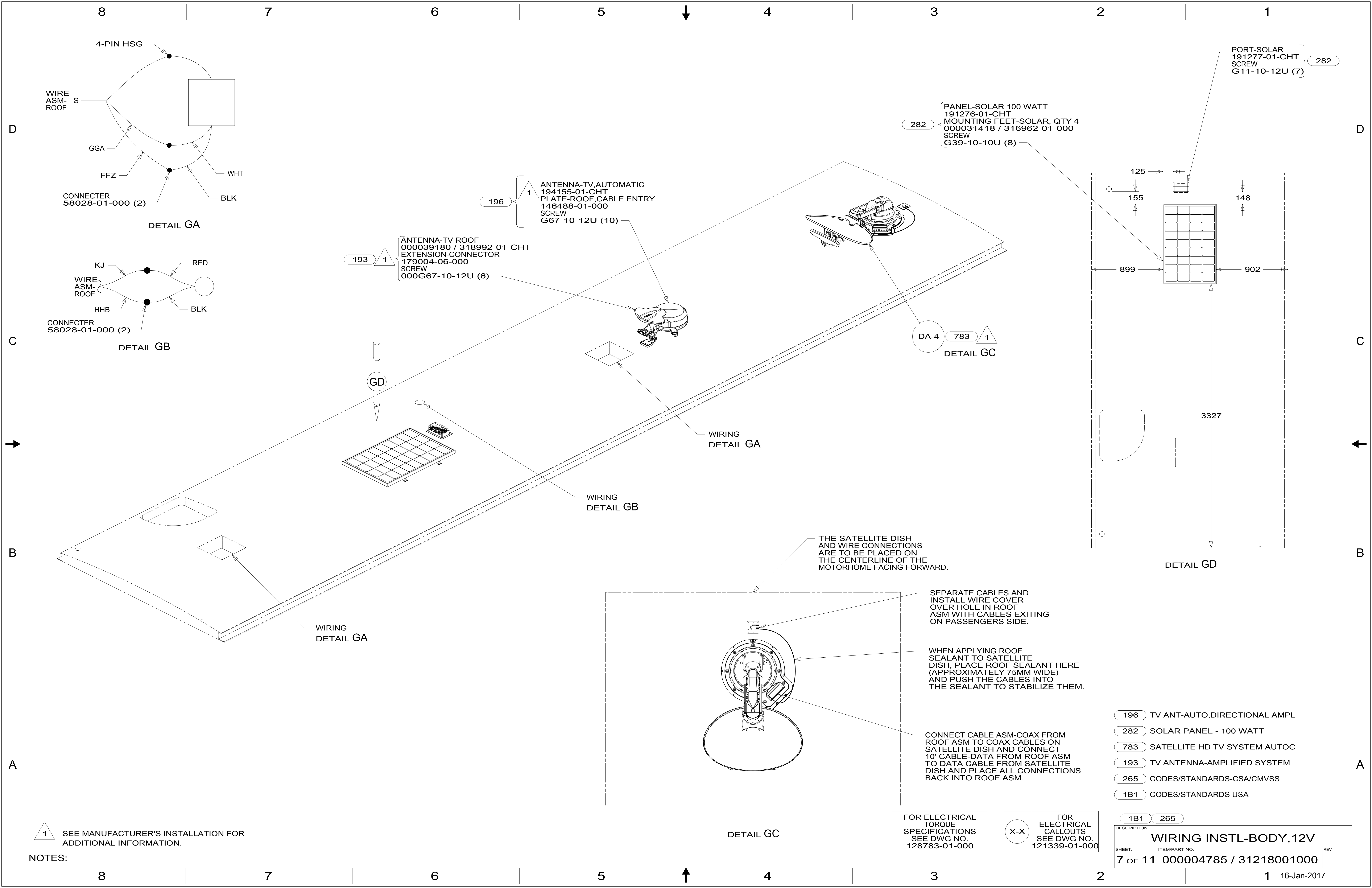
- 571 RADIO SPEAKERS
- 57P RADIO SPEAKERS-PREMIUM SOUND
- 41Y FAN - CEILING,BEDROOM
- 265 CODES/STANDARDS-CSA/CMVSS
- 1B1 CODES/STANDARDS USA

- NOTES:
- 2 APPLY LOCTITE P/N 62917-06-000 TO FAN BLADE MOUNTING NUT THREADS.
 - 1 CENTER FAN OVER 25MM HOLE IN ROOF.

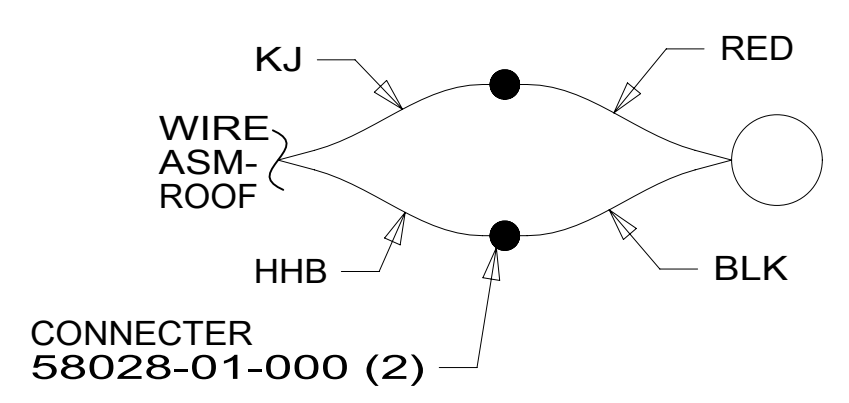
FOR ELECTRICAL TORQUE SPECIFICATIONS SEE DWG NO. 128783-01-000

FOR ELECTRICAL CALLOUTS SEE DWG NO. 121339-01-000

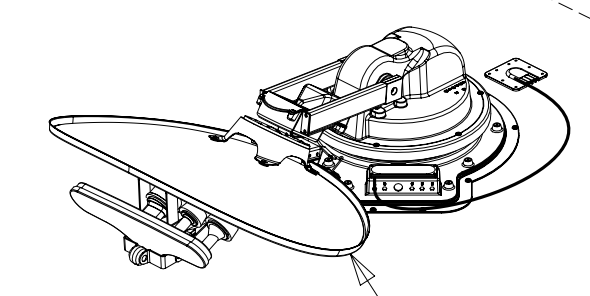
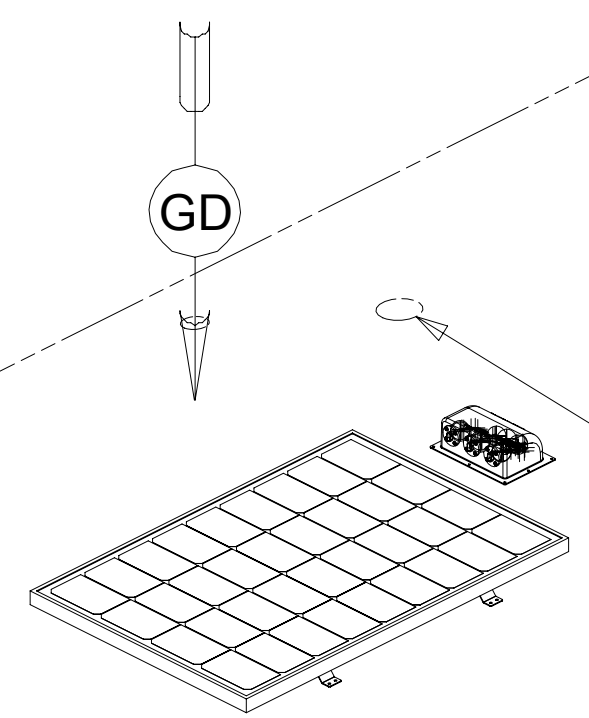
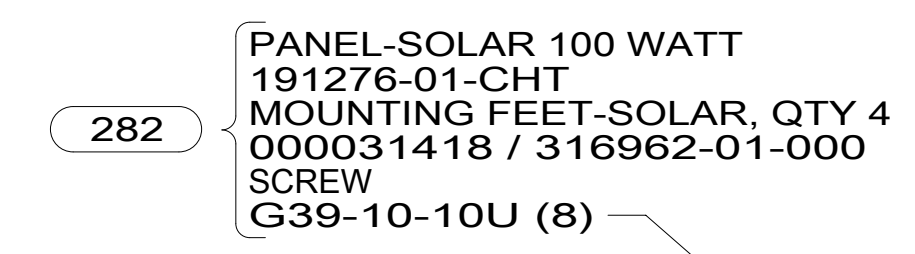
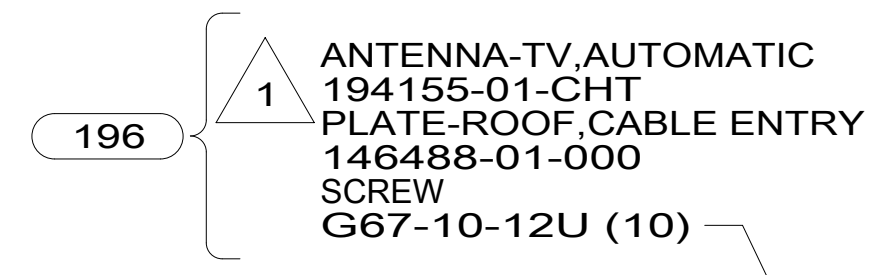
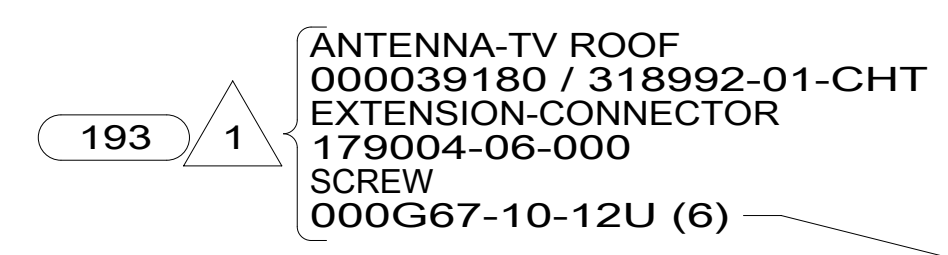
DESCRIPTION:	
WIRING INSTL-BODY, 12V	
SHEET: 6 OF 11	ITEM/PART NO: 000004785 / 31218001000
REV	16-Jan-2017



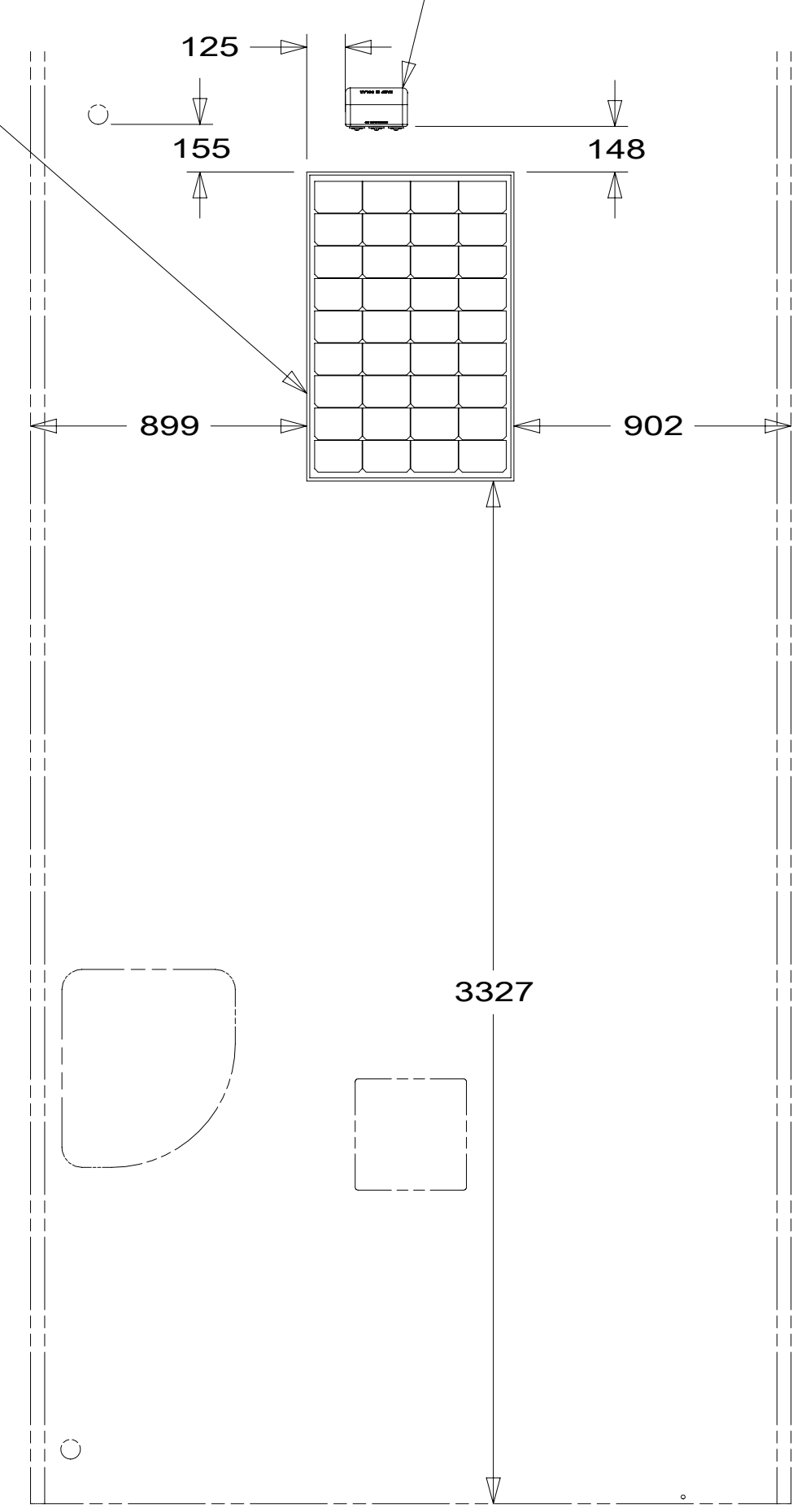
DETAIL GA



DETAIL GB



DA-4 783 1
DETAIL GC



DETAIL GD

WIRING
DETAIL GA

WIRING
DETAIL GB

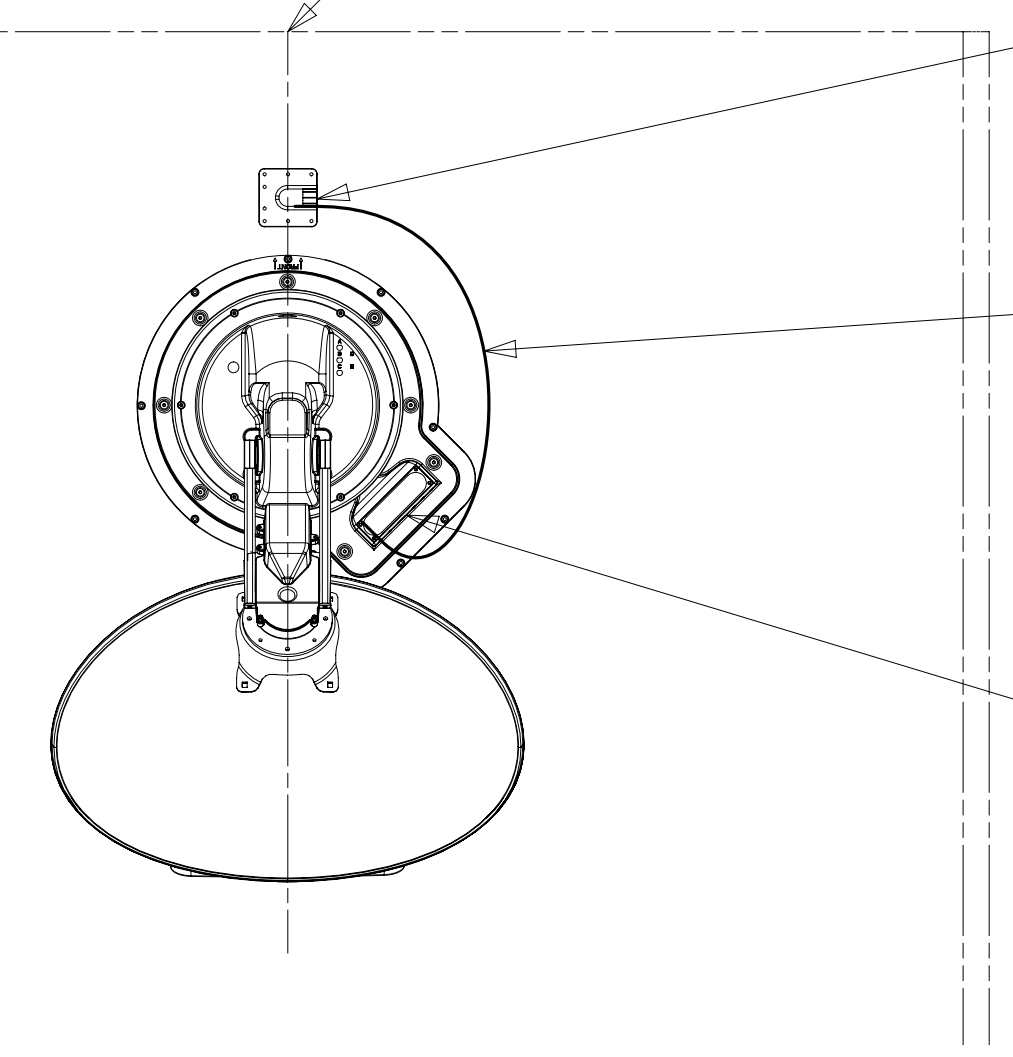
WIRING
DETAIL GA

THE SATELLITE DISH AND WIRE CONNECTIONS ARE TO BE PLACED ON THE CENTERLINE OF THE MOTORHOME FACING FORWARD.

SEPARATE CABLES AND INSTALL WIRE COVER OVER HOLE IN ROOF ASM WITH CABLES EXITING ON PASSENGERS SIDE.

WHEN APPLYING ROOF SEALANT TO SATELLITE DISH, PLACE ROOF SEALANT HERE (APPROXIMATELY 75MM WIDE) AND PUSH THE CABLES INTO THE SEALANT TO STABILIZE THEM.

CONNECT CABLE ASM-COAX FROM ROOF ASM TO COAX CABLES ON SATELLITE DISH AND CONNECT 10' CABLE-DATA FROM ROOF ASM TO DATA CABLE FROM SATELLITE DISH AND PLACE ALL CONNECTIONS BACK INTO ROOF ASM.



DETAIL GC

FOR ELECTRICAL TORQUE SPECIFICATIONS SEE DWG NO. 128783-01-000

FOR ELECTRICAL CALLOUTS SEE DWG NO. 121339-01-000

- 196 TV ANT-AUTO,DIRECTIONAL AMPL
- 282 SOLAR PANEL - 100 WATT
- 783 SATELLITE HD TV SYSTEM AUTOC
- 193 TV ANTENNA-AMPLIFIED SYSTEM
- 265 CODES/STANDARDS-CSA/CMVSS
- 1B1 CODES/STANDARDS USA

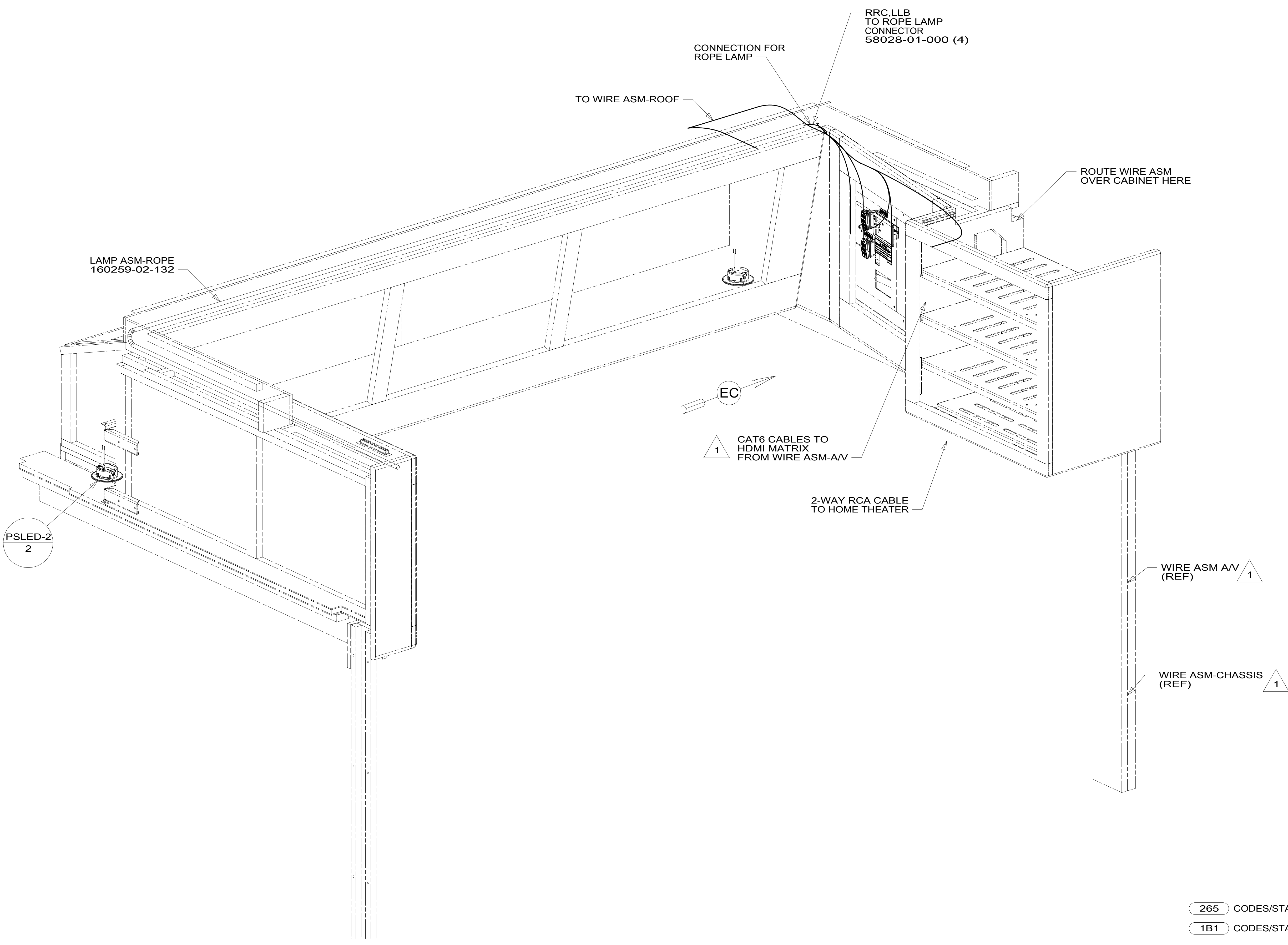
1 SEE MANUFACTURER'S INSTALLATION FOR ADDITIONAL INFORMATION.

NOTES:

DESCRIPTION:		1B1 265	
WIRING INSTL-BODY, 12V			
SHEET:	ITEM/PART NO.:	REV	
7 OF 11	000004785 / 31218001000		

8 7 6 5 4 3 2 1

D
C
B
A



NOTES:
 1 SEE WIRING INSTL-CHASSIS FOR ADDITIONAL INFORMATION.

FOR ELECTRICAL TORQUE SPECIFICATIONS SEE DWG NO. 128783-01-000

FOR ELECTRICAL CALLOUTS SEE DWG NO. 121339-01-000

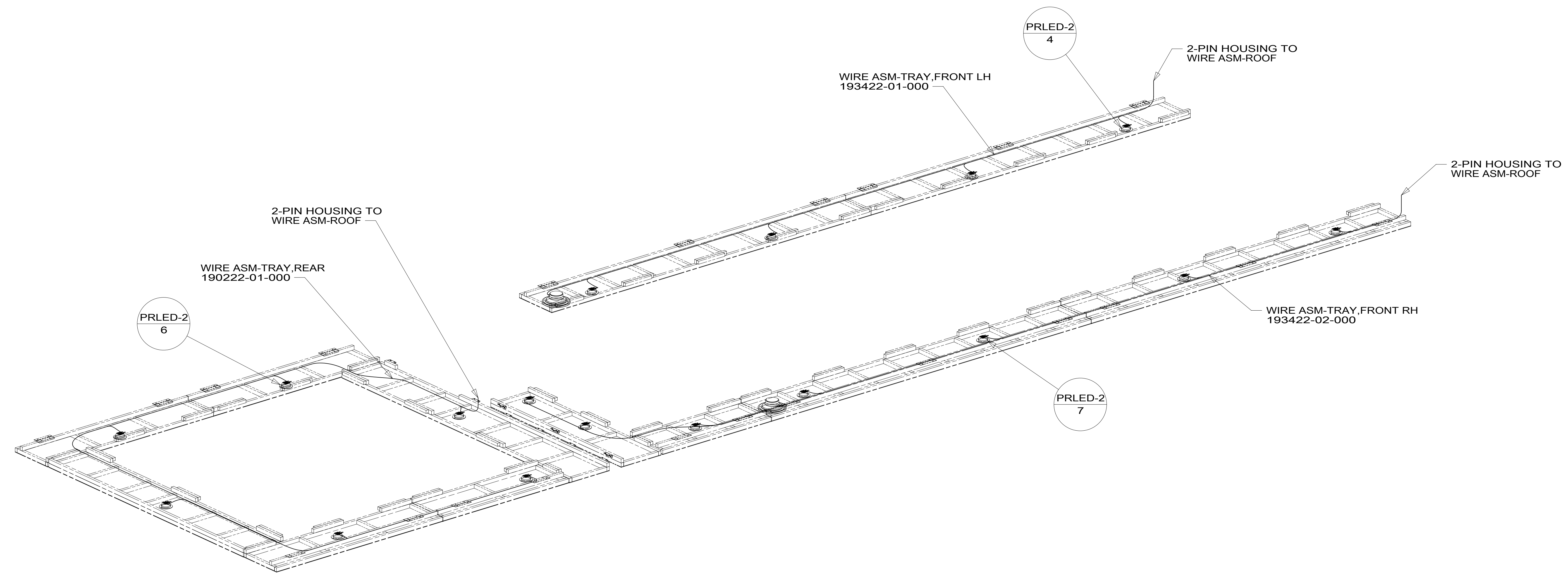
265 CODES/STANDARDS-CSA/CMVSS
 1B1 CODES/STANDARDS USA

DESCRIPTION:		1B1 265	
WIRING INSTL-BODY, 12V			
SHEET:	ITEM/PART NO.:	REV	
8 OF 11	000004785 / 31218001000		

8 7 6 5 4 3 2 1 16-Jan-2017

8 7 6 5 4 3 2 1

D
C
B
A



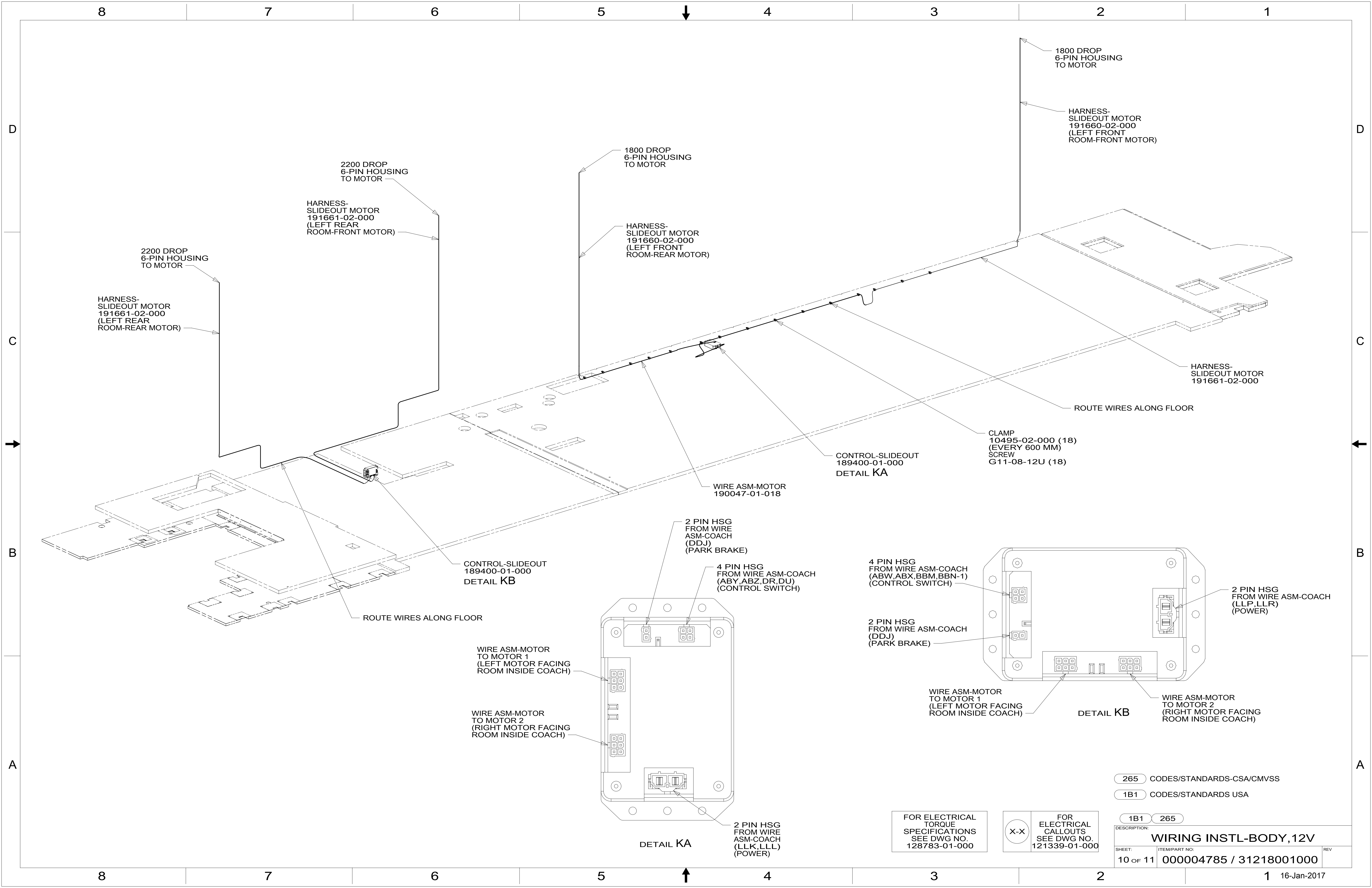
265 CODES/STANDARDS-CSA/CMVSS
 1B1 CODES/STANDARDS USA

FOR ELECTRICAL
 TORQUE
 SPECIFICATIONS
 SEE DWG NO.
 128783-01-000

FOR
 ELECTRICAL
 CALLOUTS
 SEE DWG NO.
 121339-01-000

1B1 265
 DESCRIPTION:
WIRING INSTL-BODY, 12V
 SHEET: 9 OF 11 ITEM/PART NO: 000004785 / 31218001000 REV

8 7 6 5 4 3 2 1 16-Jan-2017



8

7

6

5

4

3

2

1

D

D

C

C

B

B

A

A

2200 DROP
6-PIN HOUSING
TO MOTOR

HARNESS-
SLIDEOUT MOTOR
191661-02-000
(LEFT REAR
ROOM-REAR
MOTOR)

HARNESS-
SLIDEOUT MOTOR
191661-02-000
(LEFT REAR
ROOM-FRONT
MOTOR)

2200 DROP
6-PIN HOUSING
TO MOTOR

1800 DROP
6-PIN HOUSING
TO MOTOR

HARNESS-
SLIDEOUT MOTOR
191660-02-000
(LEFT FRONT
ROOM-REAR
MOTOR)

1800 DROP
6-PIN HOUSING
TO MOTOR

HARNESS-
SLIDEOUT MOTOR
191660-02-000
(LEFT FRONT
ROOM-FRONT
MOTOR)

HARNESS-
SLIDEOUT MOTOR
191661-02-000

ROUTE WIRES ALONG FLOOR

CLAMP
10495-02-000 (18)
(EVERY 600 MM)
SCREW
G11-08-12U (18)

CONTROL-SLIDEOUT
189400-01-000
DETAIL KA

WIRE ASM-MOTOR
190047-01-018

CONTROL-SLIDEOUT
189400-01-000
DETAIL KB

ROUTE WIRES ALONG FLOOR

2 PIN HSG
FROM WIRE
ASM-COACH
(DDJ)
(PARK BRAKE)

4 PIN HSG
FROM WIRE ASM-COACH
(ABY, ABZ, DR, DU)
(CONTROL SWITCH)

4 PIN HSG
FROM WIRE ASM-COACH
(ABW, ABX, BBM, BBN-1)
(CONTROL SWITCH)

2 PIN HSG
FROM WIRE ASM-COACH
(DDJ)
(PARK BRAKE)

2 PIN HSG
FROM WIRE ASM-COACH
(LLP, LLR)
(POWER)

WIRE ASM-MOTOR
TO MOTOR 1
(LEFT MOTOR FACING
ROOM INSIDE COACH)

WIRE ASM-MOTOR
TO MOTOR 2
(RIGHT MOTOR FACING
ROOM INSIDE COACH)

WIRE ASM-MOTOR
TO MOTOR 1
(LEFT MOTOR FACING
ROOM INSIDE COACH)

WIRE ASM-MOTOR
TO MOTOR 2
(RIGHT MOTOR FACING
ROOM INSIDE COACH)

DETAIL KA

2 PIN HSG
FROM WIRE
ASM-COACH
(LLK, LLL)
(POWER)

DETAIL KB

265 CODES/STANDARDS-CSA/CMVSS

1B1 CODES/STANDARDS USA

1B1 265

FOR ELECTRICAL
TORQUE
SPECIFICATIONS
SEE DWG NO.
128783-01-000

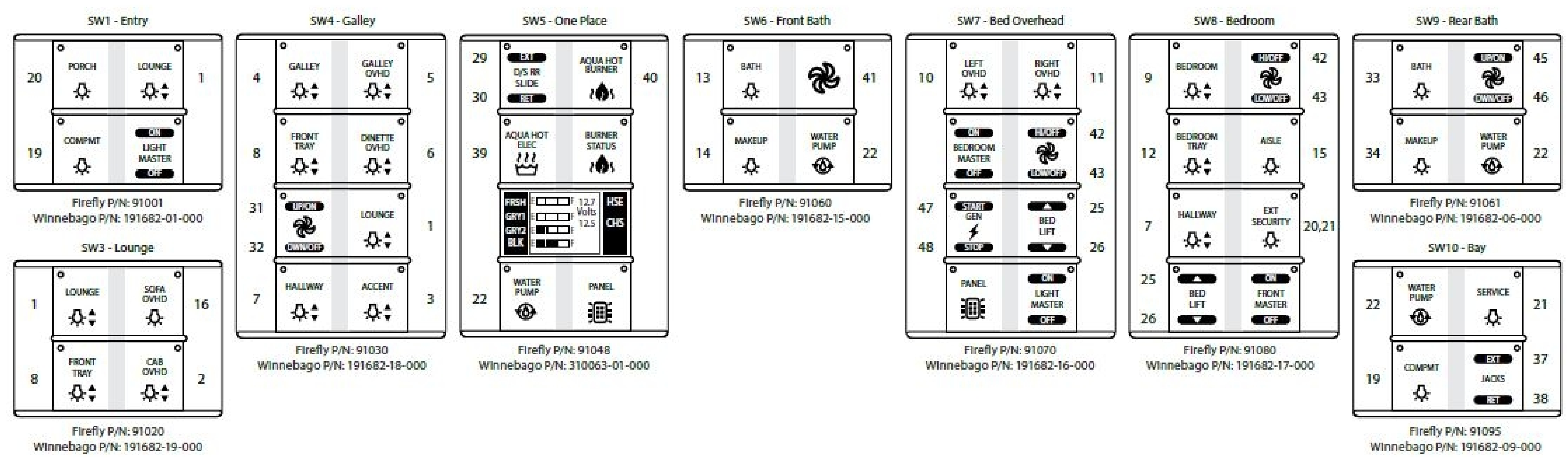
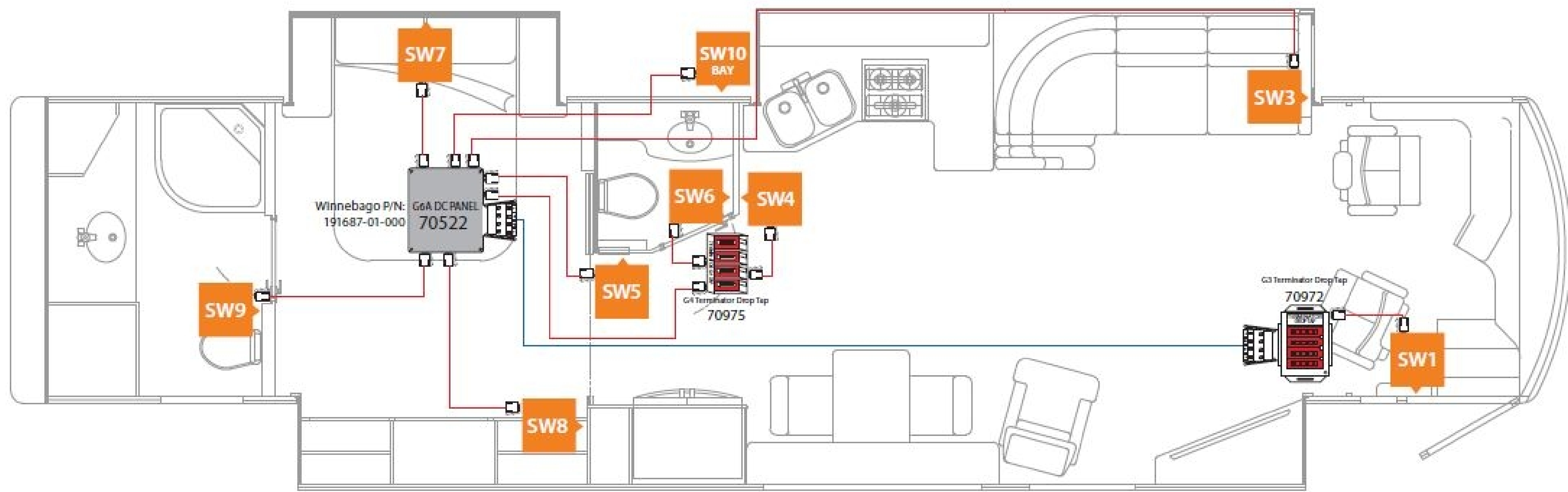
FOR ELECTRICAL
CALLOUTS
SEE DWG NO.
121339-01-000

DESCRIPTION:
WIRING INSTL-BODY, 12V

SHEET: 10 OF 11 ITEM/PART NO: 000004785 / 31218001000 REV

16-Jan-2017

WINNEBAGO - P42E - 2017
 SSP -15 NETWORK WIRING DIAGRAM
 SWITCH PANEL LAYOUT
 REVISION 1v2 12/29/15



THIS SHEET FOR REFERENCE ONLY

FOR ELECTRICAL TORQUE SPECIFICATIONS SEE DWG NO. 128783-01-000

FOR ELECTRICAL CALLOUTS SEE DWG NO. 121339-01-000

265 CODES/STANDARDS-CSA/CMVSS
 1B1 CODES/STANDARDS USA

DESCRIPTION:	1B1 265	
WIRING INSTL-BODY, 12V		
SHEET:	ITEM/PART NO:	REV
11 OF 11	000004785 / 31218001000	