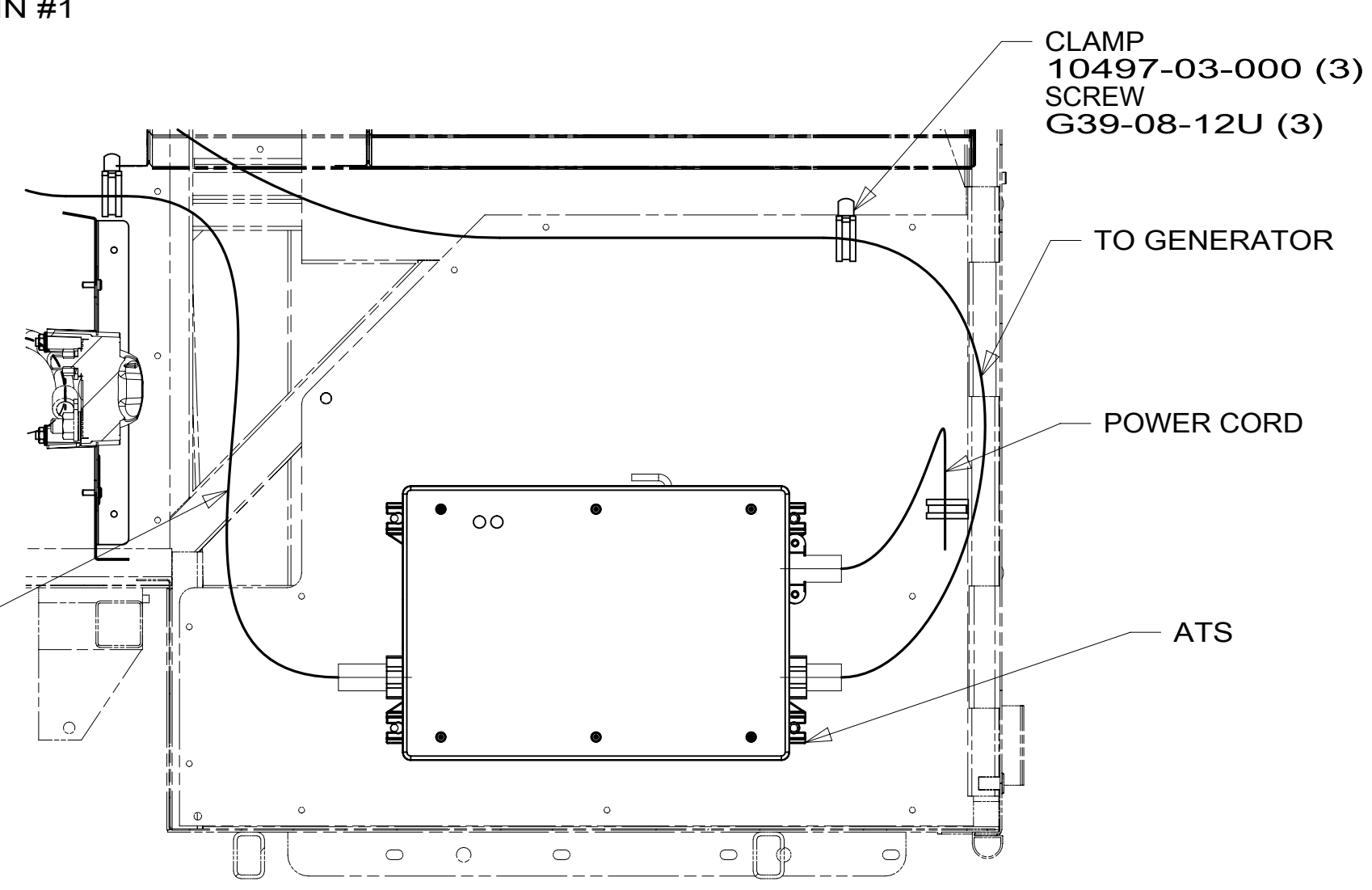
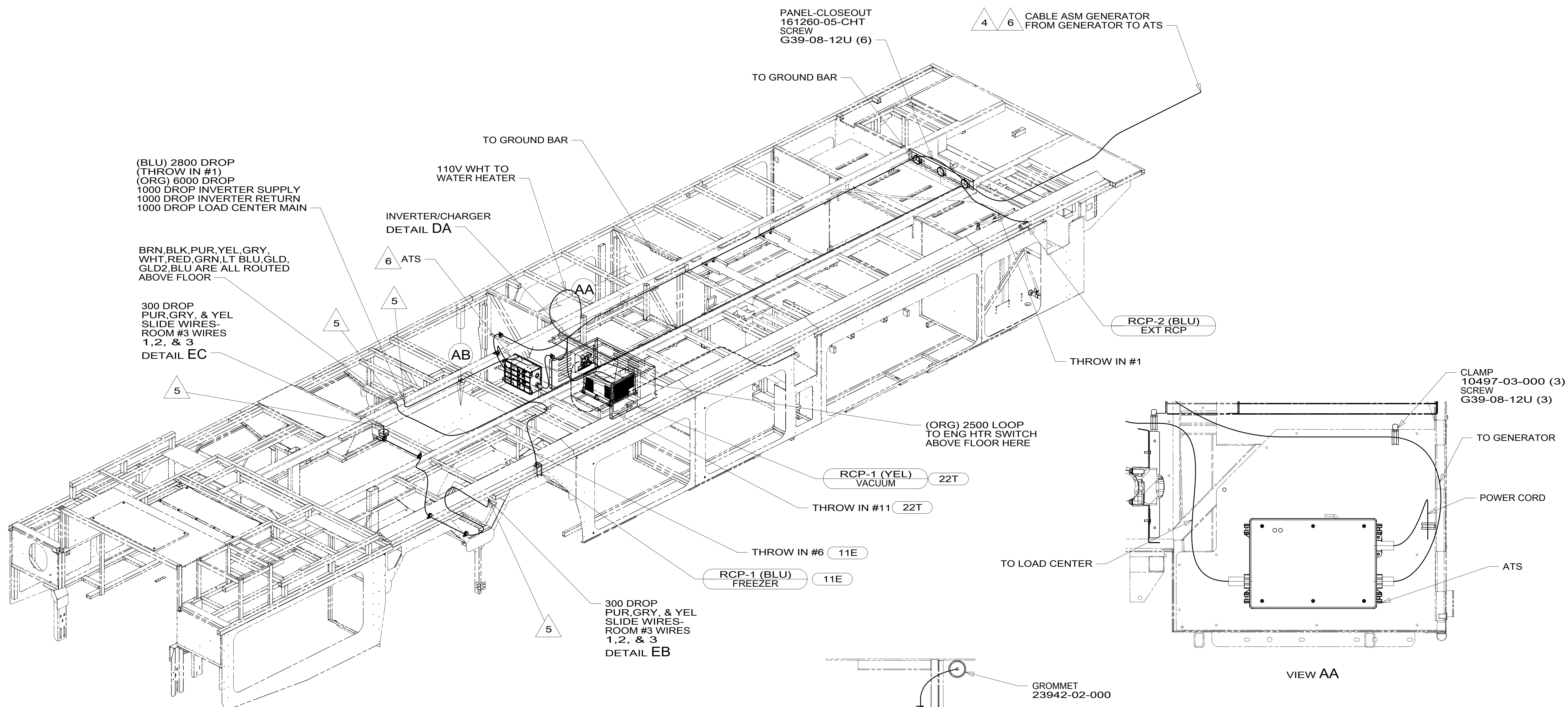


8 7 6 5 4 3 2 1



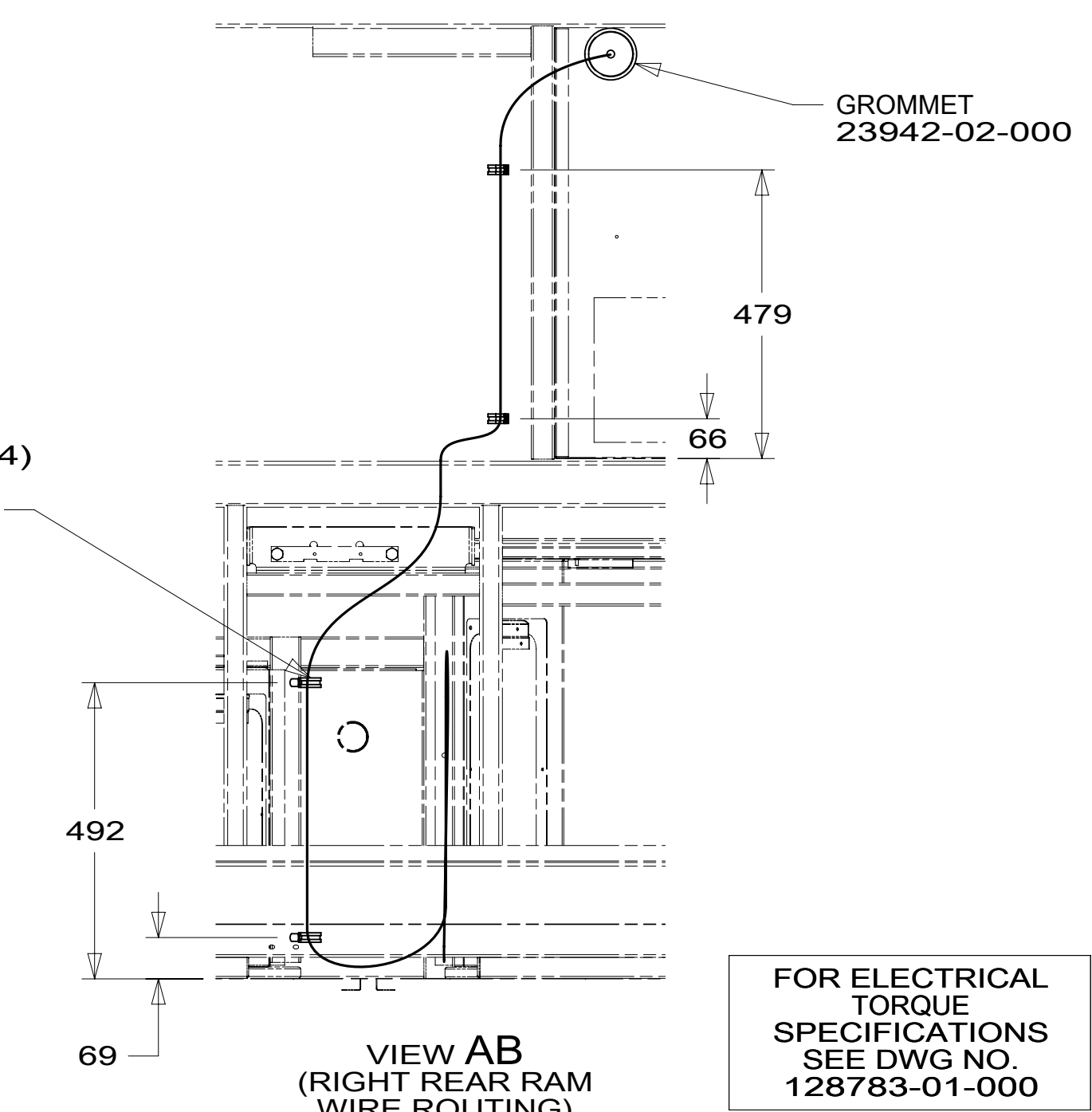
VIEW AA

- 22T VACUUM SYSTEM-CENTRAL
- 11E REFRIGERATOR/FREEZER PORTABL
- 265 CODES/STANDARDS-CSA/CMVSS
- 1B1 CODES/STANDARDS USA



DSNR:		ALL DIMENSIONS ARE IN MILLIMETERS
DFFR:		
UNSPECIFIED TOLERANCES:		MATERIAL:
WHOLE DIM (X)	3	
ONE-PLACE (X.X)	1.5	
TWO-PLACE (X.XX)	0.50	
ANGLE	1°	
REFER TO ES0018 FOR FASTENER TIGHTENING GUIDELINES	WEIGHT: (LBS)	FIRST USED:
		17 P42E

DESCRIPTION: WIRING INSTL-BODY, 110V		
SHEET: 1 OF 8	ITEM/PART NO: 000004782 / 31217901000	REV:
REF:		1 19-Dec-2016



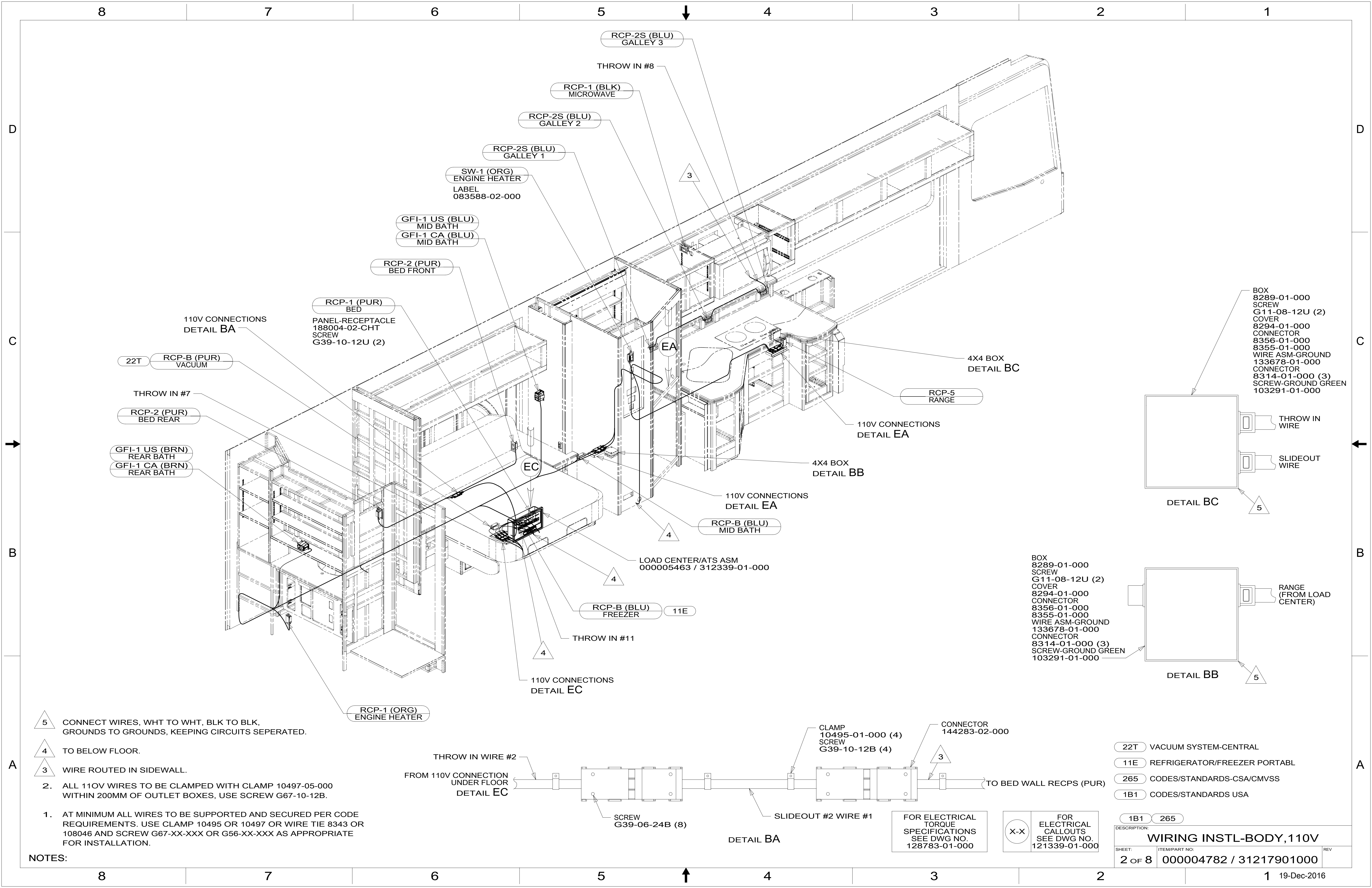
VIEW AB (RIGHT REAR RAM WIRE ROUTING)

FOR ELECTRICAL TORQUE SPECIFICATIONS SEE DWG NO. 128783-01-000

FOR ELECTRICAL CALLOUTS SEE DWG NO. 121339-01-000

- NOTES:
1. AT MINIMUM ALL WIRES TO BE SUPPORTED AND SECURED PER CODE REQUIREMENTS. USE CLAMP 10495 OR 10497 OR WIRE TIE 8343 OR 108046 AND SCREW G67-XX-XXX OR G56-XX-XXX AS APPROPRIATE FOR INSTALLATION.
 2. CLAMP TO FLOOR SUPPORT TUBES AS NECESSARY WITH CLAMP 10497-01-000.
 3. WIRES THAT REST ON WIRE TRAYS ARE TO BE TIED DOWN WITH WIRE TIE 8343-04-000.
 4. SEE GENERATOR INSTALLATION FOR ADDITIONAL INFORMATION.
 5. TO ABOVE FLOOR.
 6. SEE LOAD CENTER/ATS ASM FOR ADDITIONAL INFORMATION.

8 7 6 5 4 3 2 1



5 CONNECT WIRES, WHT TO WHT, BLK TO BLK, GROUNDS TO GROUNDS, KEEPING CIRCUITS SEPERATED.

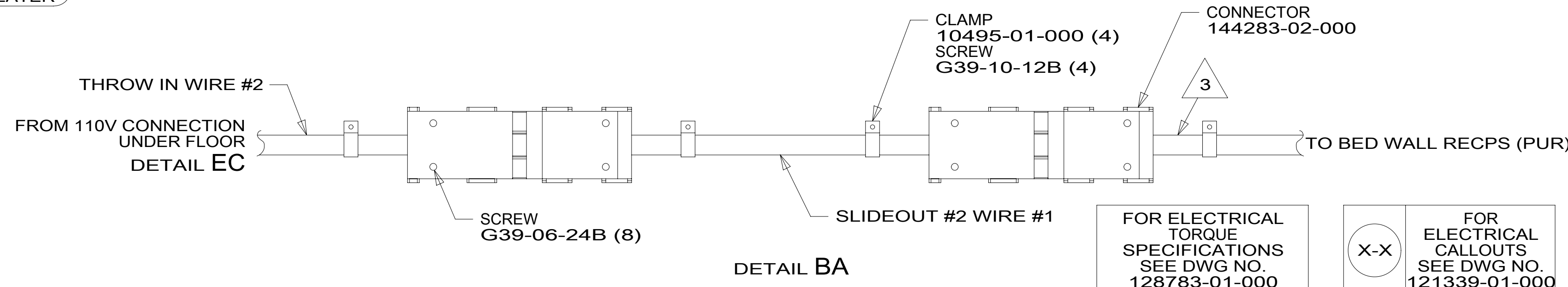
4 TO BELOW FLOOR.

3 WIRE ROUTED IN SIDEWALL.

2. ALL 110V WIRES TO BE CLAMPED WITH CLAMP 10495-05-000 WITHIN 200MM OF OUTLET BOXES, USE SCREW G67-10-12B.

1. AT MINIMUM ALL WIRES TO BE SUPPORTED AND SECURED PER CODE REQUIREMENTS. USE CLAMP 10495 OR 10497 OR WIRE TIE 8343 OR 108046 AND SCREW G67-XX-XXX OR G56-XX-XXX AS APPROPRIATE FOR INSTALLATION.

NOTES:

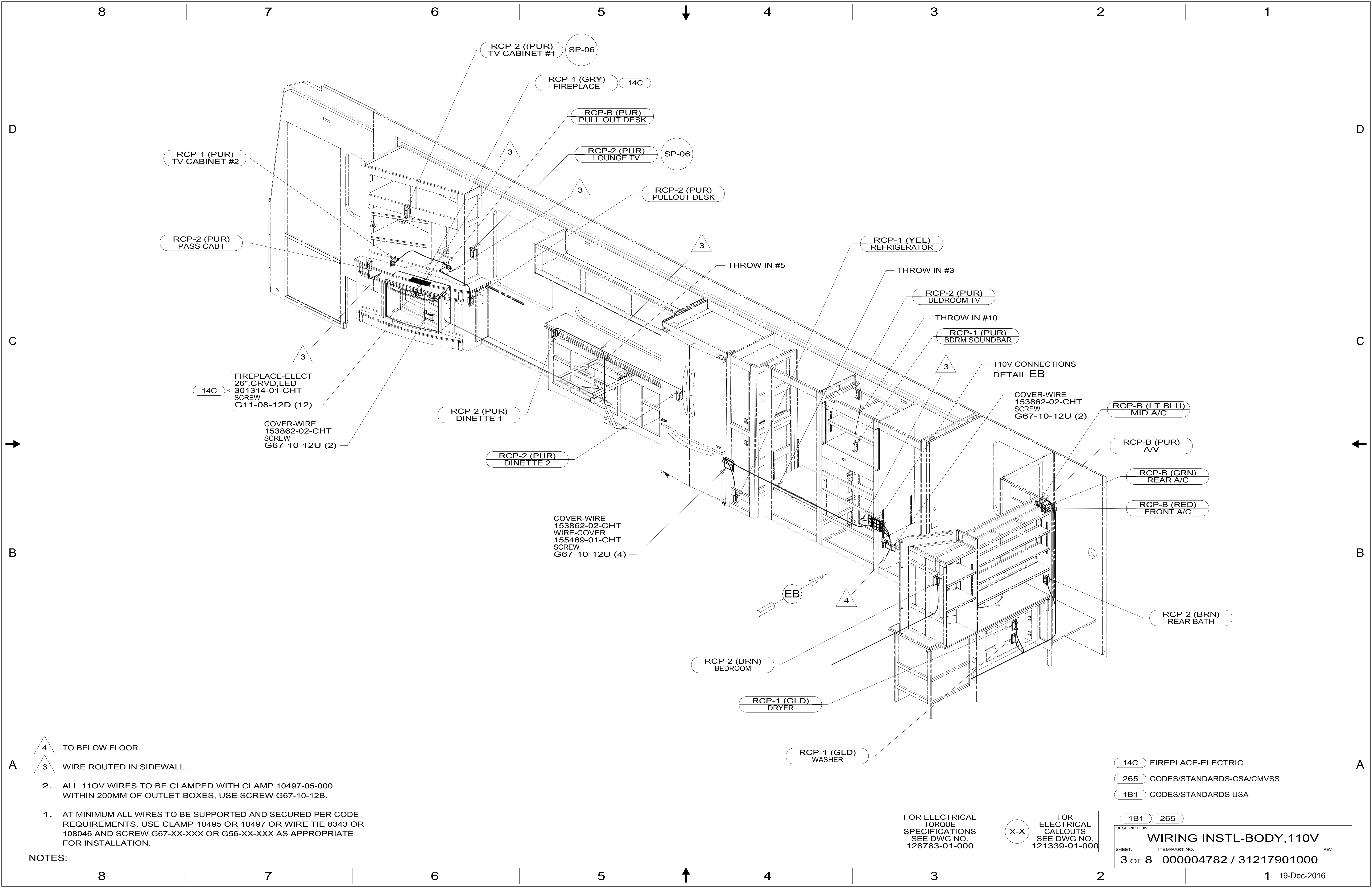


FOR ELECTRICAL TORQUE SPECIFICATIONS SEE DWG NO. 128783-01-000

FOR ELECTRICAL CALLOUTS SEE DWG NO. 121339-01-000

- 22T VACUUM SYSTEM-CENTRAL
- 11E REFRIGERATOR/FREEZER PORTABL
- 265 CODES/STANDARDS-CSA/CMVSS
- 1B1 CODES/STANDARDS USA

DESCRIPTION:		WIRING INSTL-BODY, 110V	
SHEET:	ITEM/PART NO:	REV	
2 OF 8	000004782 / 31217901000		



- 4 TO BELOW FLOOR.
- 3 WIRE ROUTED IN SIDEWALL.

2. ALL 110V WIRES TO BE CLAMPED WITH CLAMP 10497-05-000 WITHIN 200MM OF OUTLET BOXES, USE SCREW G67-10-12B.
1. AT MINIMUM ALL WIRES TO BE SUPPORTED AND SECURED PER CODE REQUIREMENTS. USE CLAMP 10495 OR 10497 OR WIRE TIE 8343 OR 108046 AND SCREW G67-XX-XXX OR G56-XX-XXX AS APPROPRIATE FOR INSTALLATION.

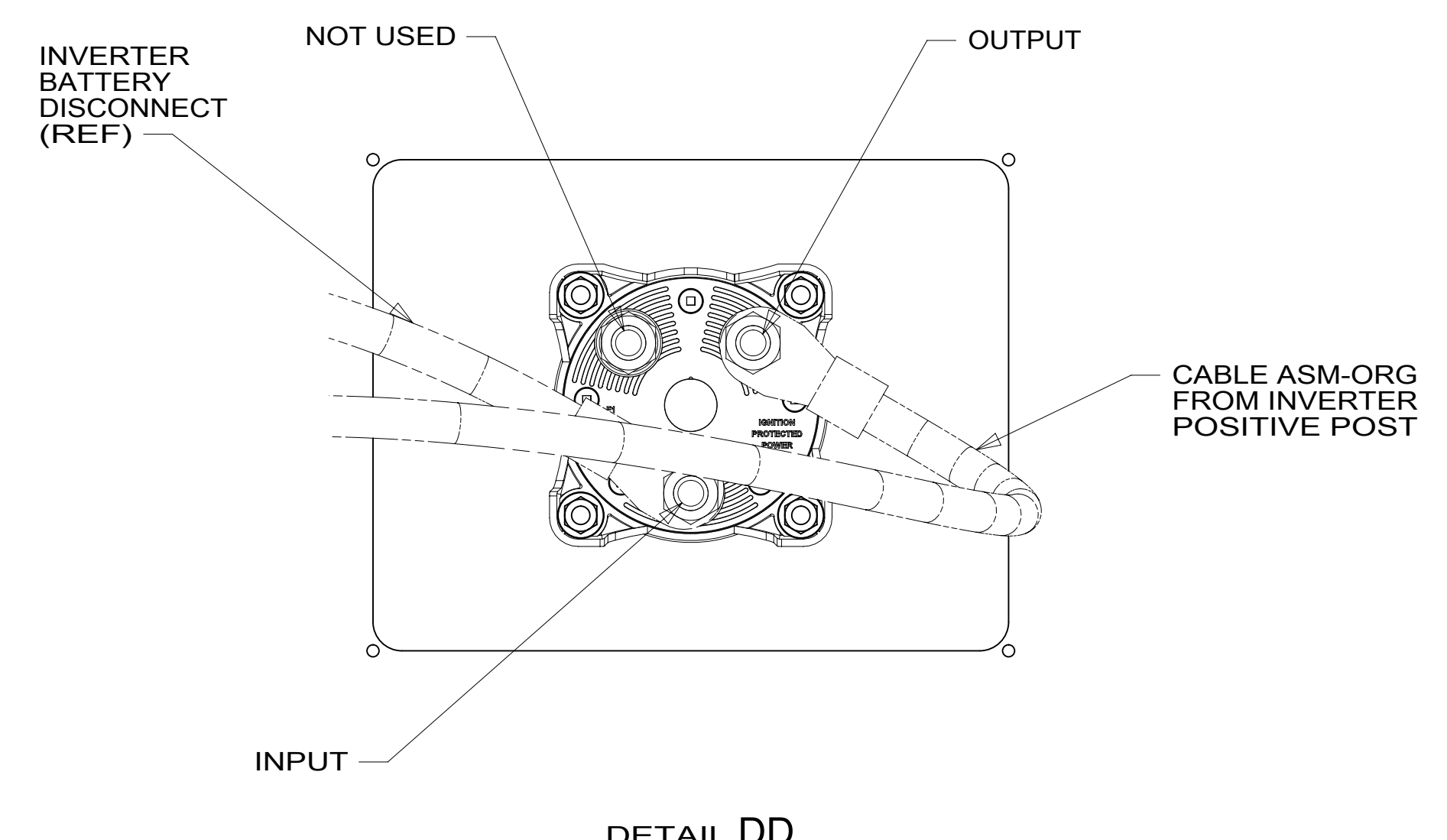
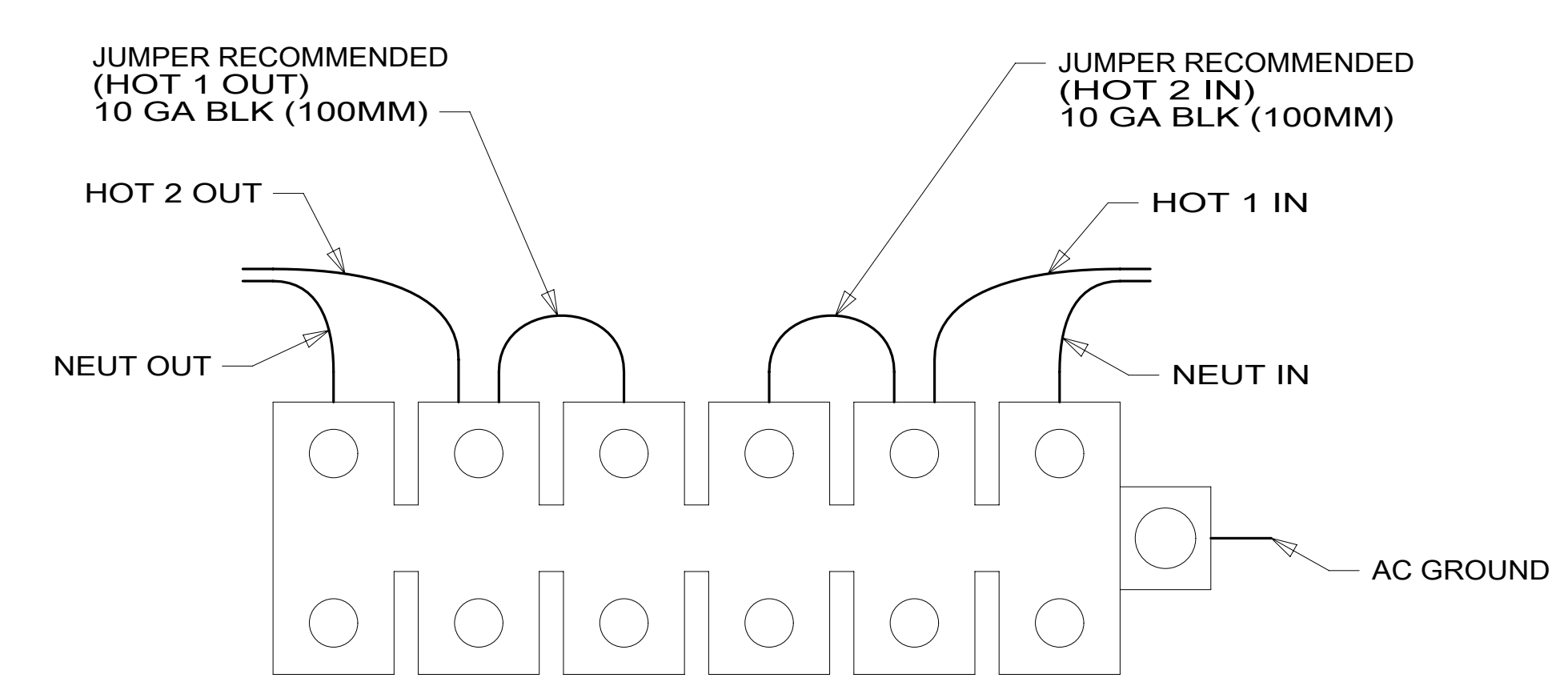
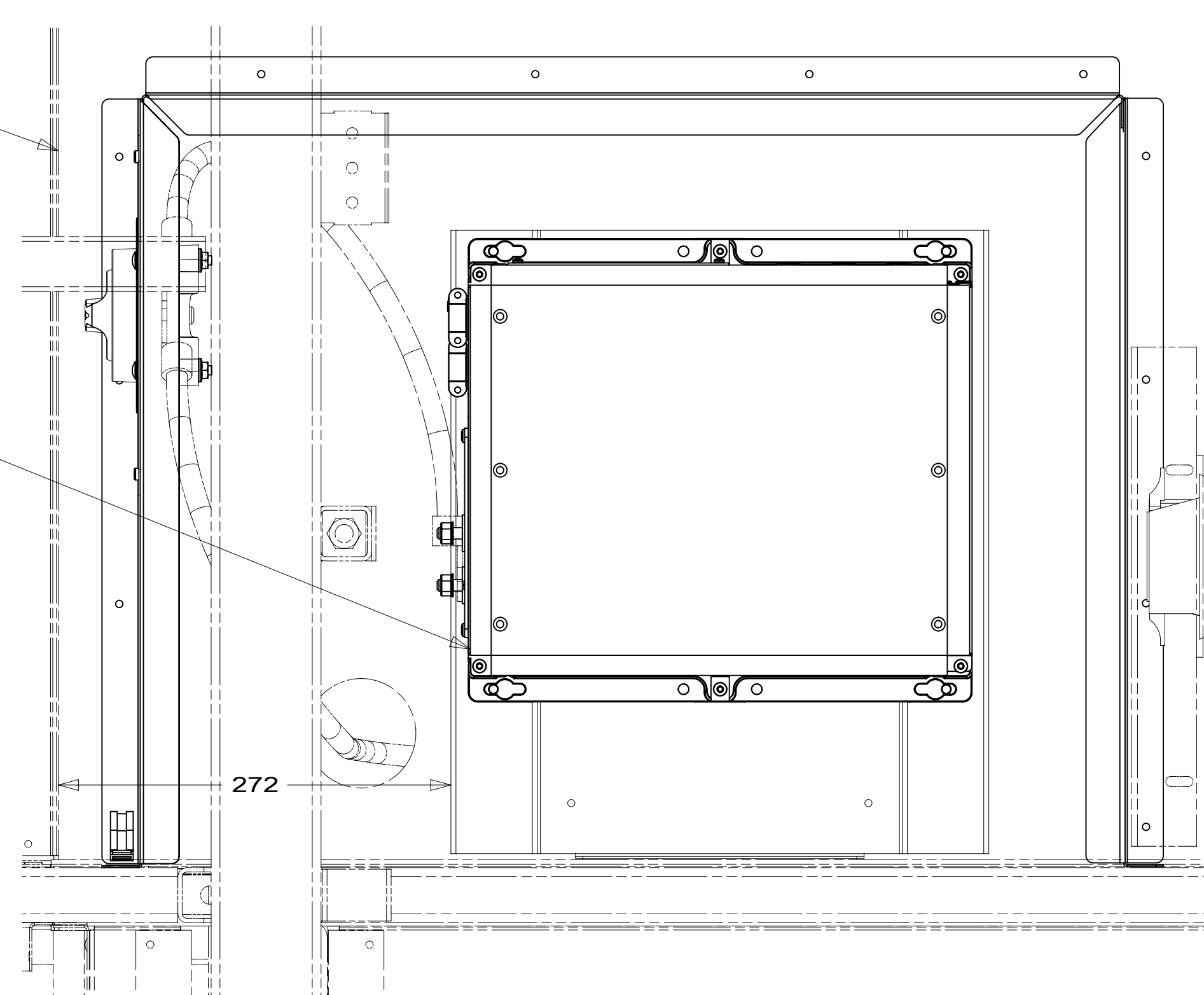
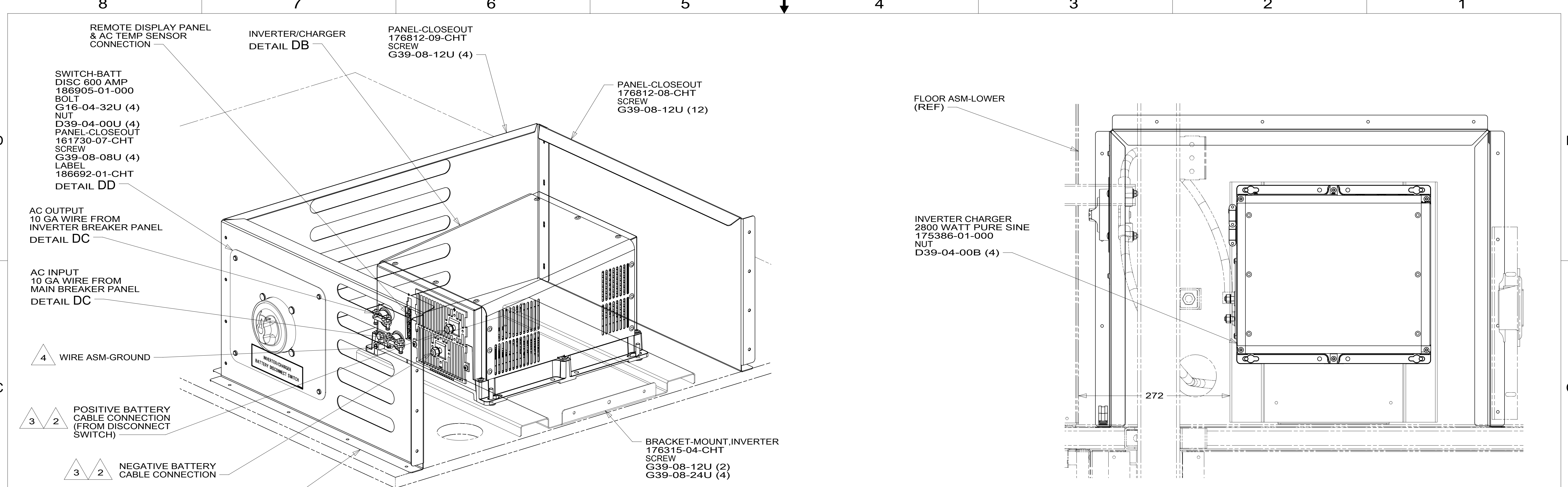
NOTES:

FOR ELECTRICAL TORQUE SPECIFICATIONS SEE DWG NO. 128783-01-000

FOR ELECTRICAL CALLOUTS SEE DWG NO. 121339-01-000

- 14C FIREPLACE-ELECTRIC
- 265 CODES/STANDARDS-CSA/CMVSS
- 1B1 CODES/STANDARDS USA

DESCRIPTION:		1B1 265	
WIRING INSTL-BODY, 110V			
SHEET:	ITEM/PART NO.:	REV:	
3 OF 8	000004782 / 31217901000		



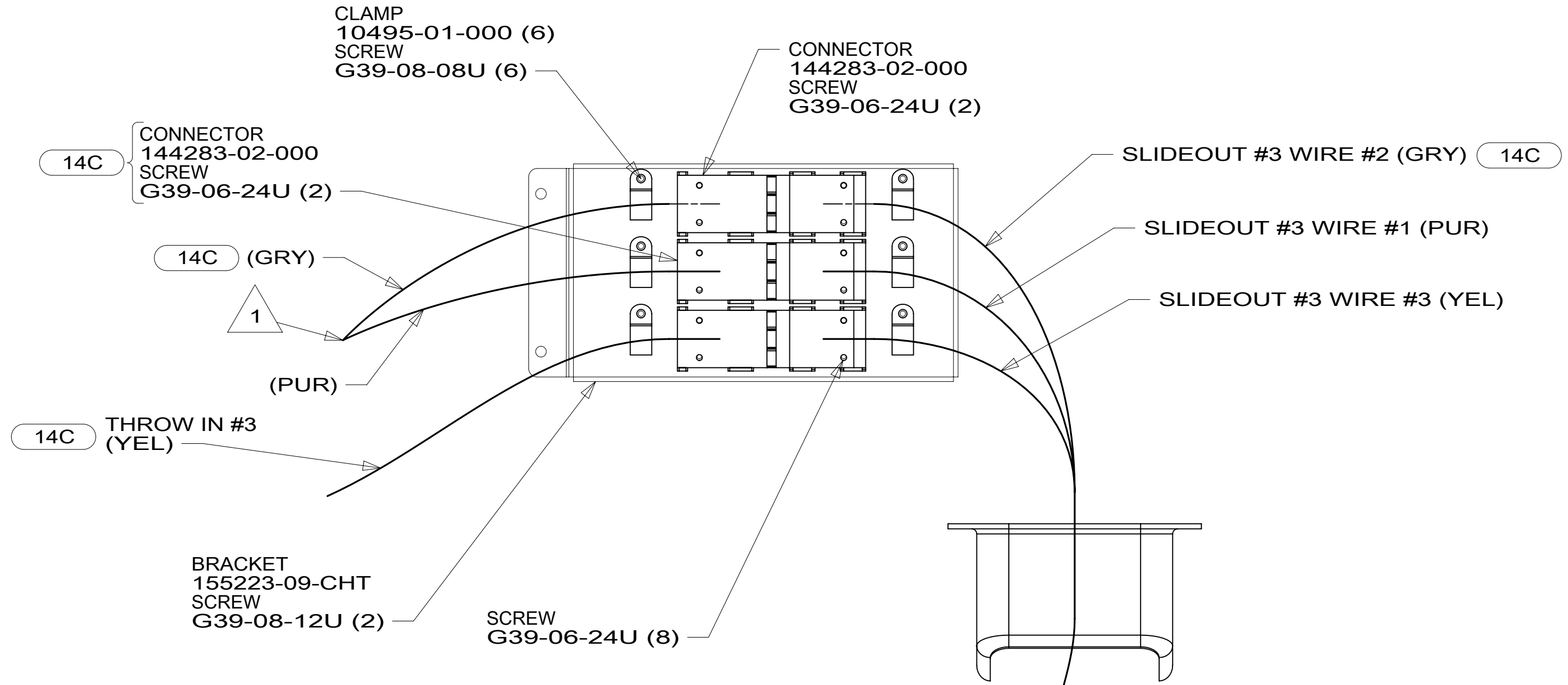
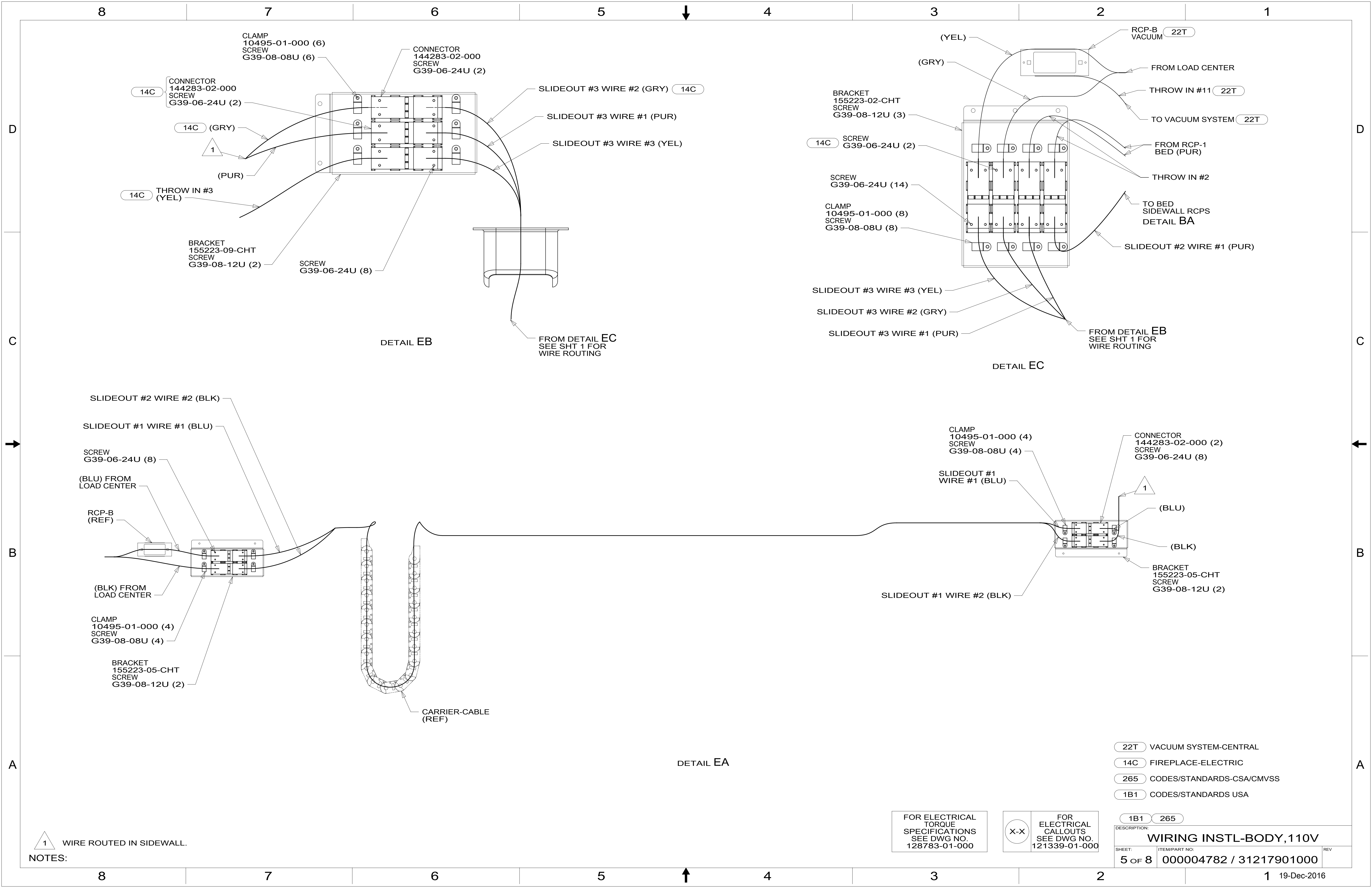
- NOTES:
- 4 SEE LOAD CENTER/ATS ASM FOR ADDITIONAL INFORMATION.
 - 3 DO NOT USE POWER/AIR TOOL TO INSTALL NUT. TORQUE TO 10-12 FT LBS.
 - 2 SEE WIRING INSTL-CHASSIS FOR ADDITIONAL INFORMATION.
1. WIRE MUST BE ROUTED THROUGH CLAMPS AS SHOWN.

FOR ELECTRICAL TORQUE SPECIFICATIONS SEE DWG NO. 128783-01-000

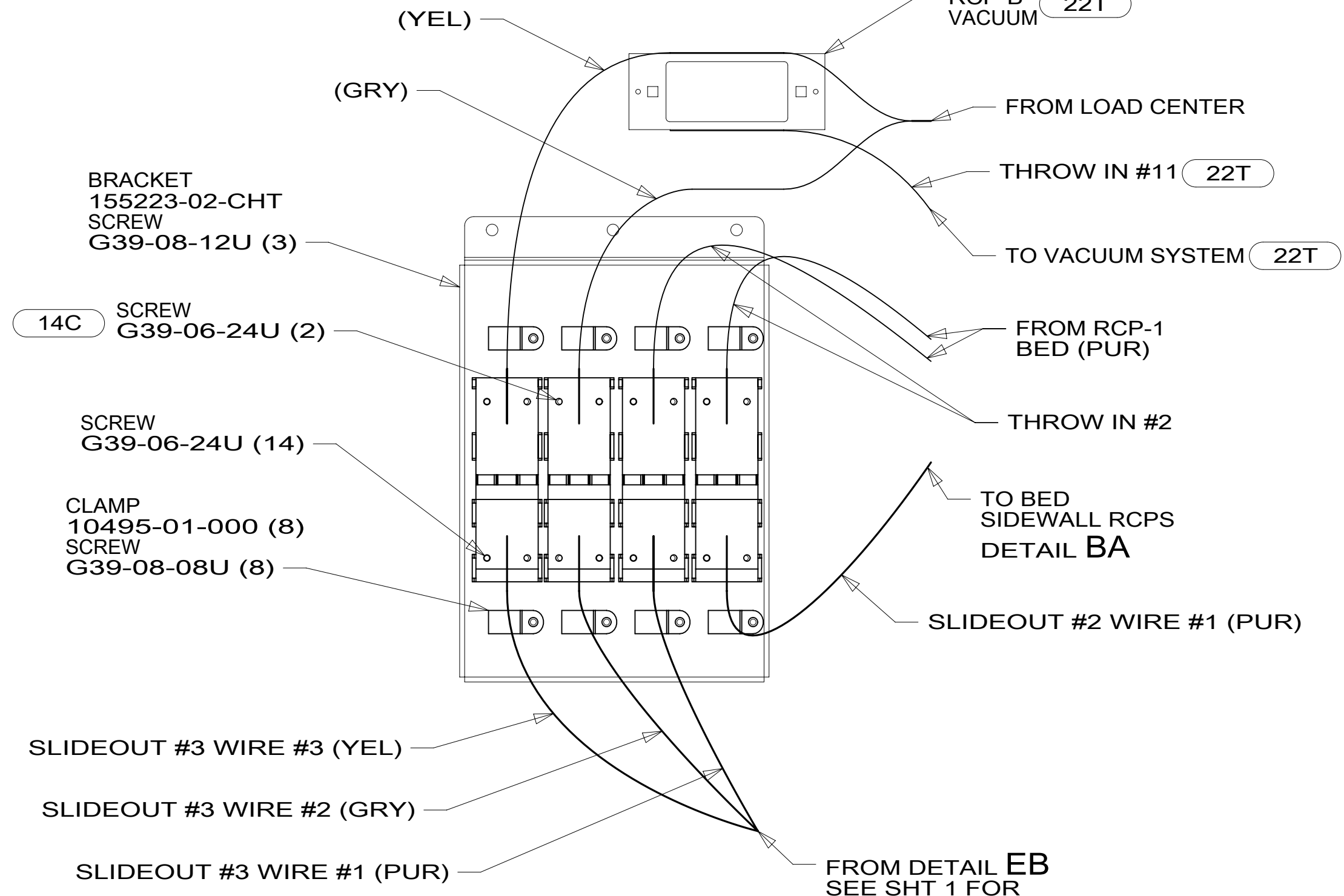
FOR ELECTRICAL CALLOUTS SEE DWG NO. 121339-01-000

- 265 CODES/STANDARDS-CSA/CMVSS
- 1B1 CODES/STANDARDS USA

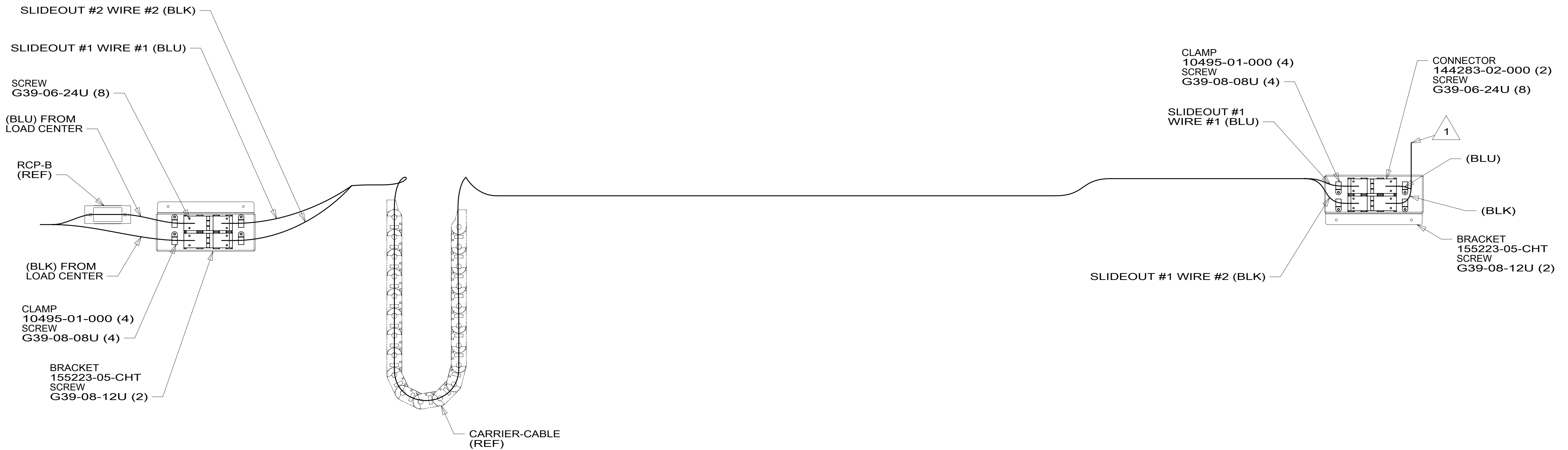
DESCRIPTION:	
WIRING INSTL-BODY, 110V	
SHEET:	ITEM/PART NO.:
4 OF 8	000004782 / 31217901000
REV	



DETAIL EB



DETAIL EC



DETAIL EA

- 22T VACUUM SYSTEM-CENTRAL
- 14C FIREPLACE-ELECTRIC
- 265 CODES/STANDARDS-CSA/CMVSS
- 1B1 CODES/STANDARDS USA

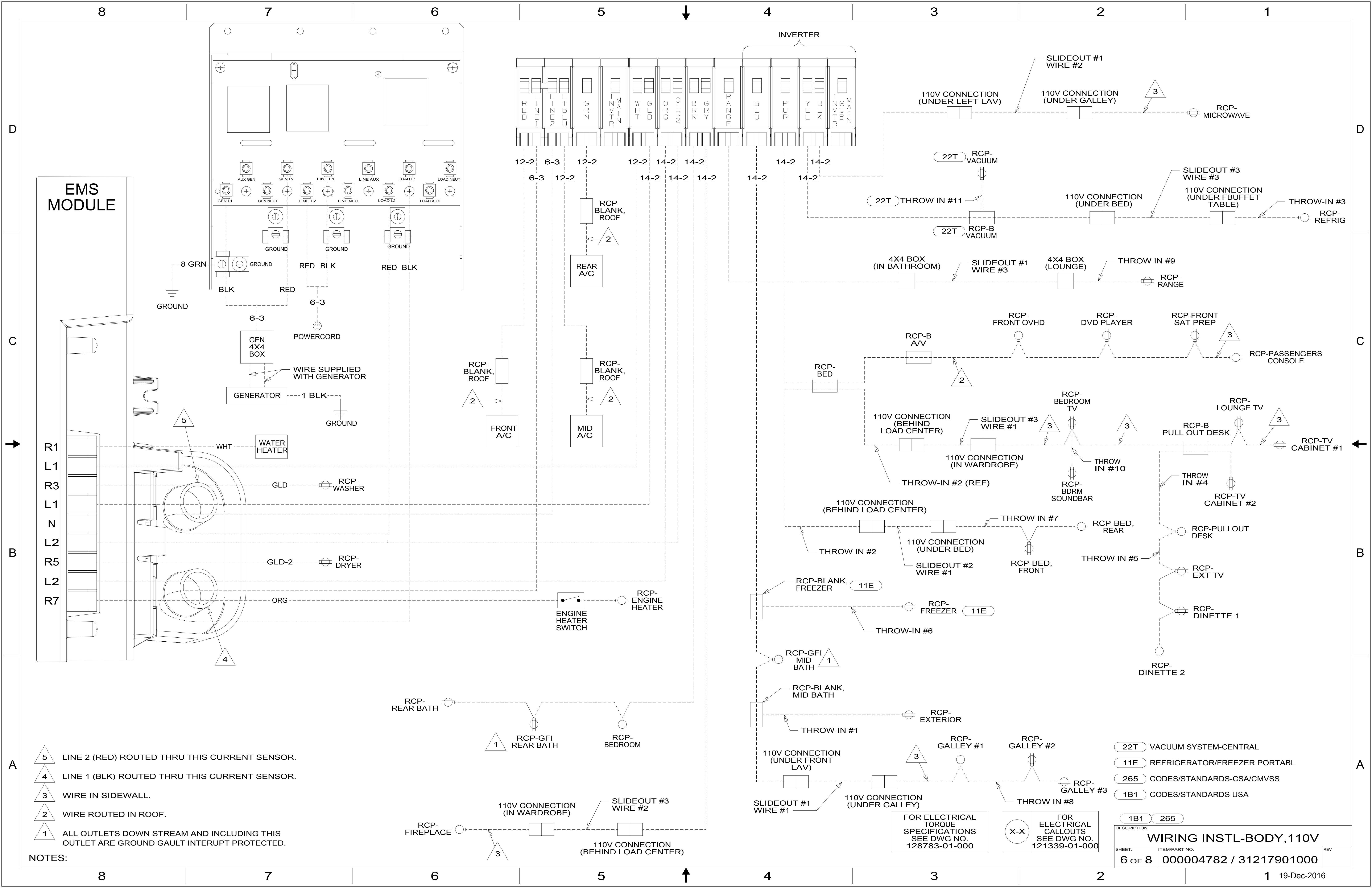
1 WIRE ROUTED IN SIDEWALL.

NOTES:

FOR ELECTRICAL TORQUE SPECIFICATIONS SEE DWG NO. 128783-01-000

FOR ELECTRICAL CALLOUTS SEE DWG NO. 121339-01-000

DESCRIPTION:	
1B1 265 WIRING INSTL-BODY, 110V	
SHEET:	ITEM/PART NO:
5 OF 8	000004782 / 31217901000
REV	
19-Dec-2016	



EMS MODULE

INVERTER

- NOTES:**
- 5 LINE 2 (RED) ROUTED THRU THIS CURRENT SENSOR.
 - 4 LINE 1 (BLK) ROUTED THRU THIS CURRENT SENSOR.
 - 3 WIRE IN SIDEWALL.
 - 2 WIRE ROUTED IN ROOF.
 - 1 ALL OUTLETS DOWN STREAM AND INCLUDING THIS OUTLET ARE GROUND GAULT INTERRUPT PROTECTED.

FOR ELECTRICAL TORQUE SPECIFICATIONS SEE DWG NO. 128783-01-000

FOR ELECTRICAL CALLOUTS SEE DWG NO. 121339-01-000

22T	VACUUM SYSTEM-CENTRAL
11E	REFRIGERATOR/FREEZER PORTABL
265	CODES/STANDARDS-CSA/CMVSS
1B1	CODES/STANDARDS USA
1B1	265
DESCRIPTION: WIRING INSTL-BODY, 110V	
SHEET: 6 OF 8	ITEM/PART NO: 000004782 / 31217901000
REV	19-Dec-2016



D

D

C

C

B

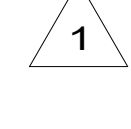
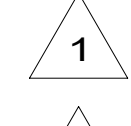
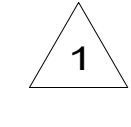
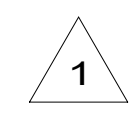
B

A

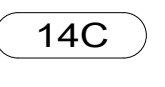
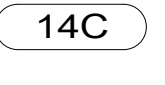
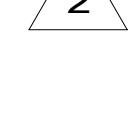
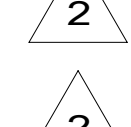
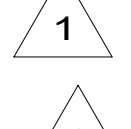
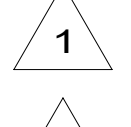
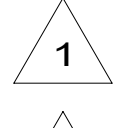
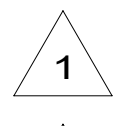
A



RED	1B1	136135-07-090
	265	136136-07-090
GRN	1B1	136135-08-090
	265	136136-08-090
LT BLU	1B1	136135-21-090
	265	136136-21-090
YEL	1B1	136131-05-015
	265	136134-05-015
GLD	1B1	136131-10-070
	265	136134-10-070
GLD-2	1B1	136131-20-070
	265	136134-20-070
WHT	1B1	136135-09-070
	265	136136-09-070
BLU	1B1	136131-02-070
	265	136134-02-070
BRN	1B1	136131-03-160
	265	136134-03-160
PUR	1B1	136131-04-100
	265	136134-04-100
ORG	1B1	136131-16-140
	265	136134-16-140



BLK	1B1	136131-06-040
	265	136134-06-040
GRY	1B1	136131-15-015
	265	136134-15-015
RANGE	1B1	136135-01-041
	265	136136-01-041
INVERTER CHARGER MAIN	1B1	136137-01-053
	265	136138-01-053
INVERTER CHARGER SUB MAIN	1B1	136137-01-053
	265	136138-01-053
CABLE ASM-MAIN,6 AWG		176841-01-053
MAIN GROUND		136145-01-050
ATS GROUND		136145-01-025
INVERTER GROUND		136145-04-025
GENERATOR CABLE ASM		174031-03-097



- FIREPLACE-ELECTRIC
- CODES/STANDARDS-CSA/CMVSS
- CODES/STANDARDS USA

NOTES:
 SEE DETAIL BB.
 SEE DETAIL HA FOR CONNECTOR INSTALLATION.

FOR ELECTRICAL TORQUE SPECIFICATIONS SEE DWG NO. 128783-01-000

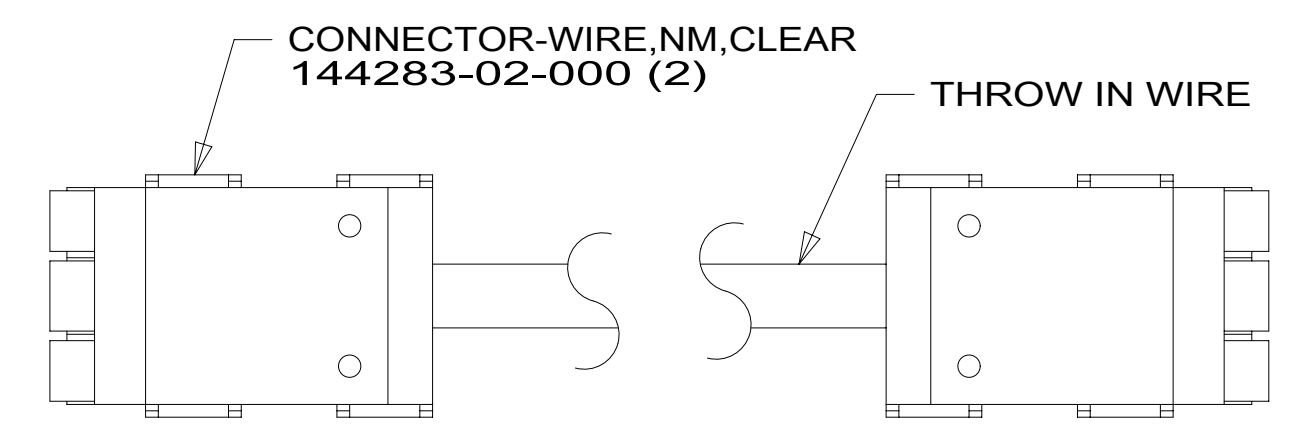
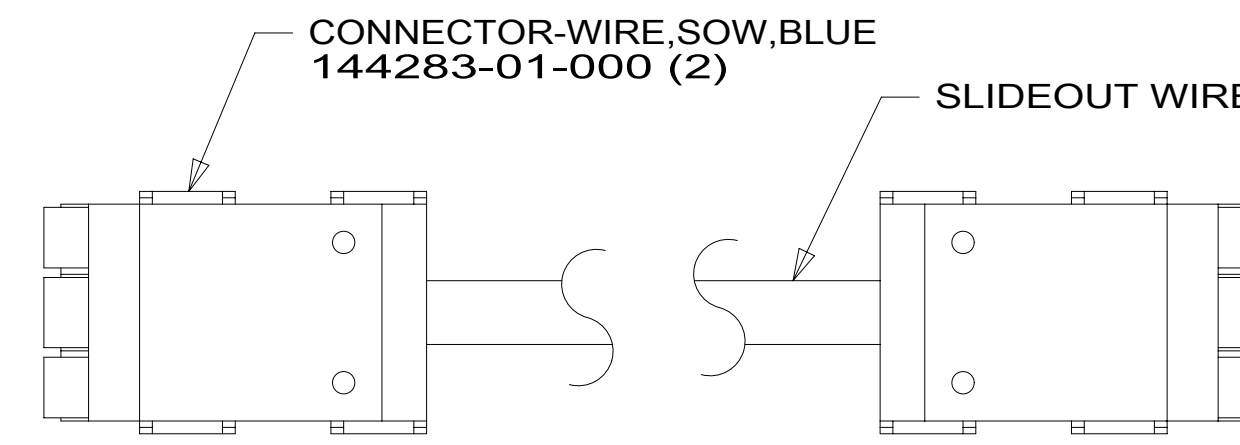
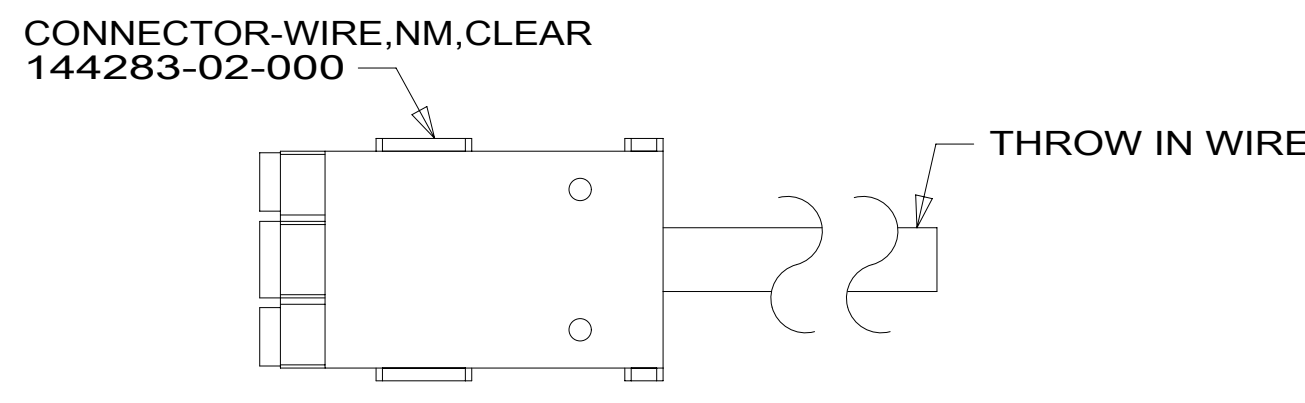
FOR ELECTRICAL CALLOUTS SEE DWG NO. 121339-01-000

DESCRIPTION: WIRING INSTL-BODY, 110V	
SHEET: 7 OF 8	ITEM/PART NO.: 000004782 / 31217901000
REV	



THROW IN WIRE #1	1B1	136131-02-110	
	265	136134-02-110	
THROW IN WIRE #2	1B1	136131-04-010	3
	265	136134-04-010	3
THROW IN WIRE #3	1B1	136131-05-023	1
	265	136134-05-023	1
THROW IN WIRE #4	1B1	136131-04-020	
	265	136134-04-020	
THROW IN WIRE #5	1B1	136131-04-032	
	265	136134-04-032	
THROW IN WIRE #6	1B1	136131-02-030	11E
	265	136134-02-030	11E
THROW IN WIRE #7	1B1	136131-04-040	1
	265	136134-04-040	1
THROW IN WIRE #8	1B1	136131-02-030	
	265	136134-02-030	
THROW IN WIRE #9	1B1	136135-01-026	4
	265	136136-01-026	4
THROW IN WIRE #10	1B1	136131-04-010	
	265	136134-04-010	
THROW IN WIRE #11	1B1	136131-05-045	22T
	265	136134-05-045	22T

SLIDEOUT #1 WIRE #1	136151-02-058	2
SLIDEOUT #1 WIRE #2	136151-06-058	2
SLIDEOUT #1 WIRE #3	136152-01-058	4
SLIDEOUT #2 WIRE #1	136151-04-015	2
SLIDEOUT #3 WIRE #1	136151-04-042	2
SLIDEOUT #3 WIRE #2	136151-15-042	2 14C
SLIDEOUT #3 WIRE #3	136151-05-042	2



- NOTES:
- 4 SEE DETAIL BC.
 - 3 SEE DETAIL HC FOR CONNECTOR INSTALLATION.
 - 2 SEE DETAIL HB FOR CONNECTOR INSTALLATION.
 - 1 SEE DETAIL HA FOR CONNECTOR INSTALLATION.

- 22T VACUUM SYSTEM-CENTRAL
- 11E REFRIGERATOR/FREEZER PORTABL
- 14C FIREPLACE-ELECTRIC
- 265 CODES/STANDARDS-CSA/CMVSS
- 1B1 CODES/STANDARDS USA

FOR ELECTRICAL TORQUE SPECIFICATIONS SEE DWG NO. 128783-01-000

FOR ELECTRICAL CALLOUTS SEE DWG NO. 121339-01-000

DESCRIPTION:	1B1 265	
WIRING INSTL-BODY, 110V		
SHEET:	ITEM/PART NO.:	REV
8 OF 8	000004782 / 31217901000	