

8

7

6

5



4

3

2

1

CABLE ASM-STARTER (RED)	141415-32-065
CABLE ASM-COACH BATTERY (YEL)	141415-52-016
CABLE ASM-COACH BATTERY GND (BLK)	133566-12-008
CABLE ASM-GENERATOR (GRN)	141415-42-049
CABLE ASM-GENERATOR GND (BLK)	133566-12-008
CABLE ASM-STARTER,EXT (RED 2)	141415-32-007
LEVELING SYSTEM GROUND CABLE (BLK)	133566-12-005
LEVELING SYSTEM POWER CABLE (BLU)	141415-22-020

60M

60M

60M HYDRAULIC LEVEL JACKS-AUTO

265 CODES/STANDARDS-CSA/CMVSS

1B1 CODES/STANDARDS USA

1B1 265



COPYRIGHT 2016 WINNEBAGO INDUSTRIES, INC.

DSNR:		ALL DIMENSIONS ARE IN MILLIMETERS	
DIFFR:		MATERIAL:	
UNSPECIFIED TOLERANCES:			
WHOLE DIM (X)	: 3		
ONE-PLACE (X.X)	: 1.5		
TWO-PLACE (X.XX)	: 0.50		
ANGLE	: 1°		

REFER TO ES0018 FOR FASTENER TIGHTENING GUIDELINES

WEIGHT: (LBS) FIRST USED: 17 331D

FOR ELECTRICAL TORQUE SPECIFICATIONS SEE DWG NO. 128783-01-000

FOR ELECTRICAL CALLOUTS SEE DWG NO. 121339-01-000

DESCRIPTION: BATTERY INSTL

SHEET: 1 OF 3 ITEM/PART NO: 000004192 / 31208701000 REV

REF: 1 09-Dec-2016

8

7

6

5



4

3

2

1

D

C

B

A

D

C

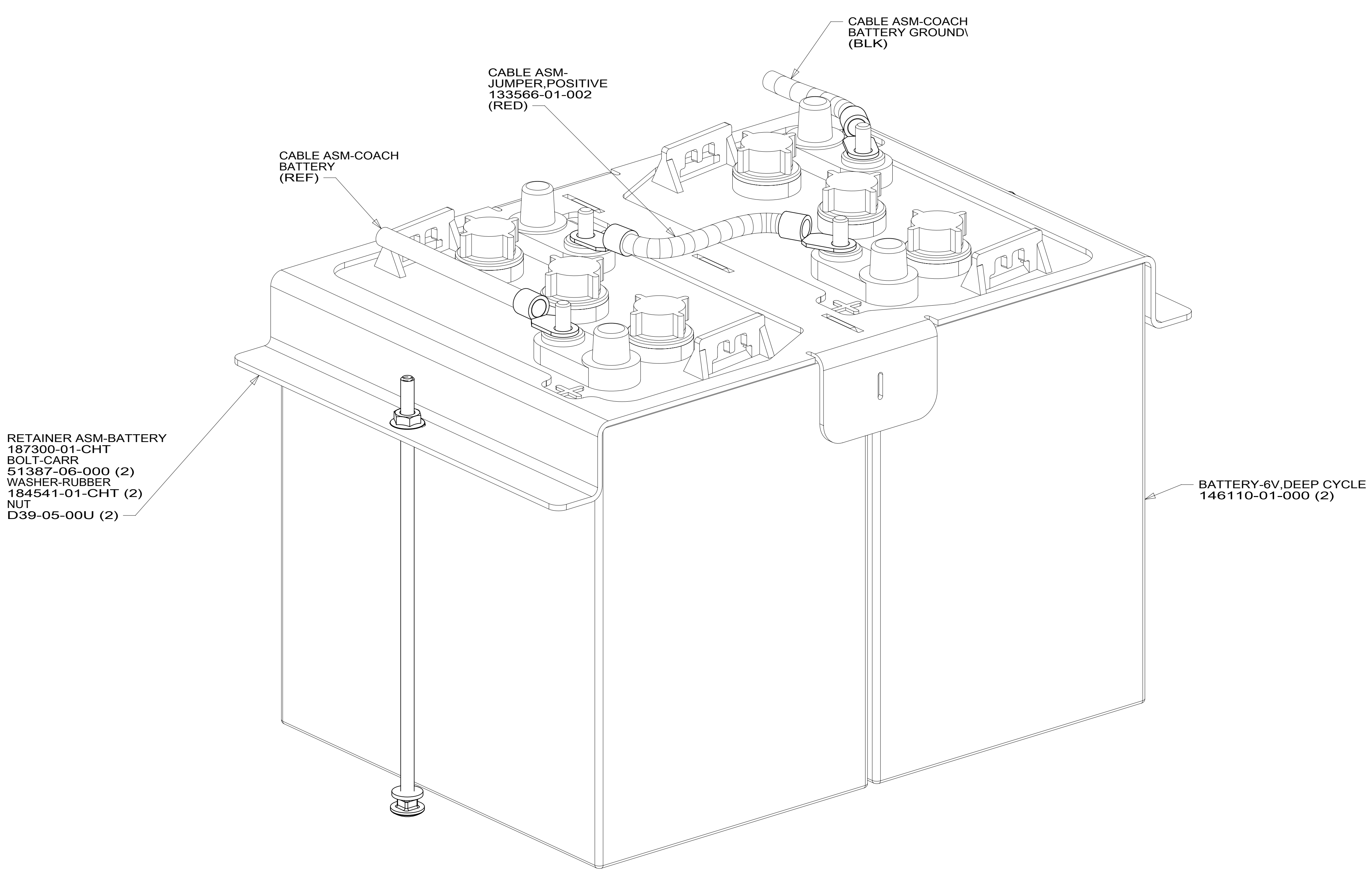
B

A

8 7 6 5 4 3 2 1

D  
C  
B  
A

D  
C  
B  
A



RETAINER ASM-BATTERY  
 187300-01-CHT  
 BOLT-CARR  
 51387-06-000 (2)  
 WASHER-RUBBER  
 184541-01-CHT (2)  
 NUT  
 D39-05-00U (2)

CABLE ASM-COACH  
 BATTERY  
 (REF)

CABLE ASM-  
 JUMPER, POSITIVE  
 133566-01-002  
 (RED)

CABLE ASM-COACH  
 BATTERY GROUND  
 (BLK)

BATTERY-6V, DEEP CYCLE  
 146110-01-000 (2)

VIEW BA

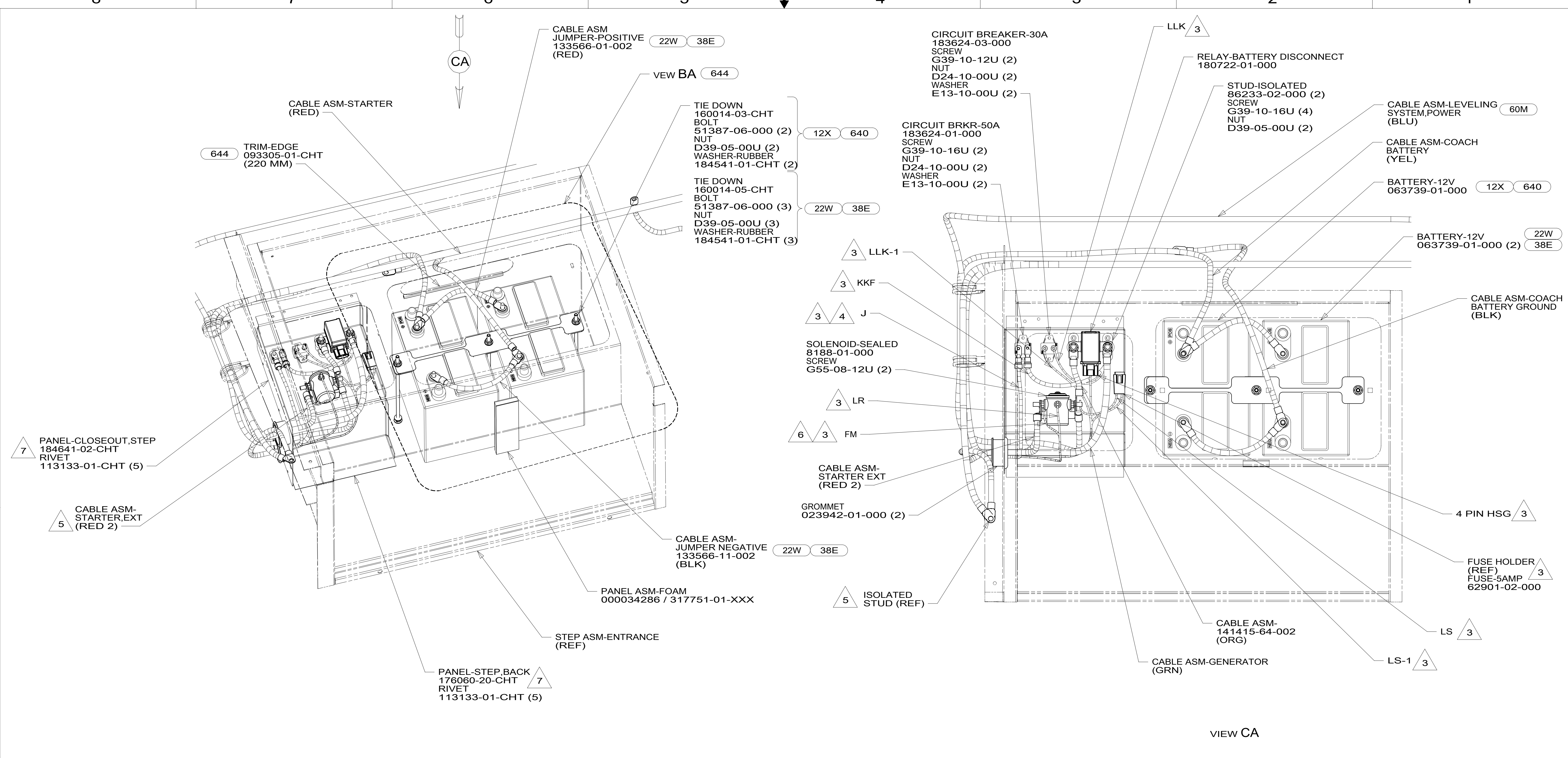
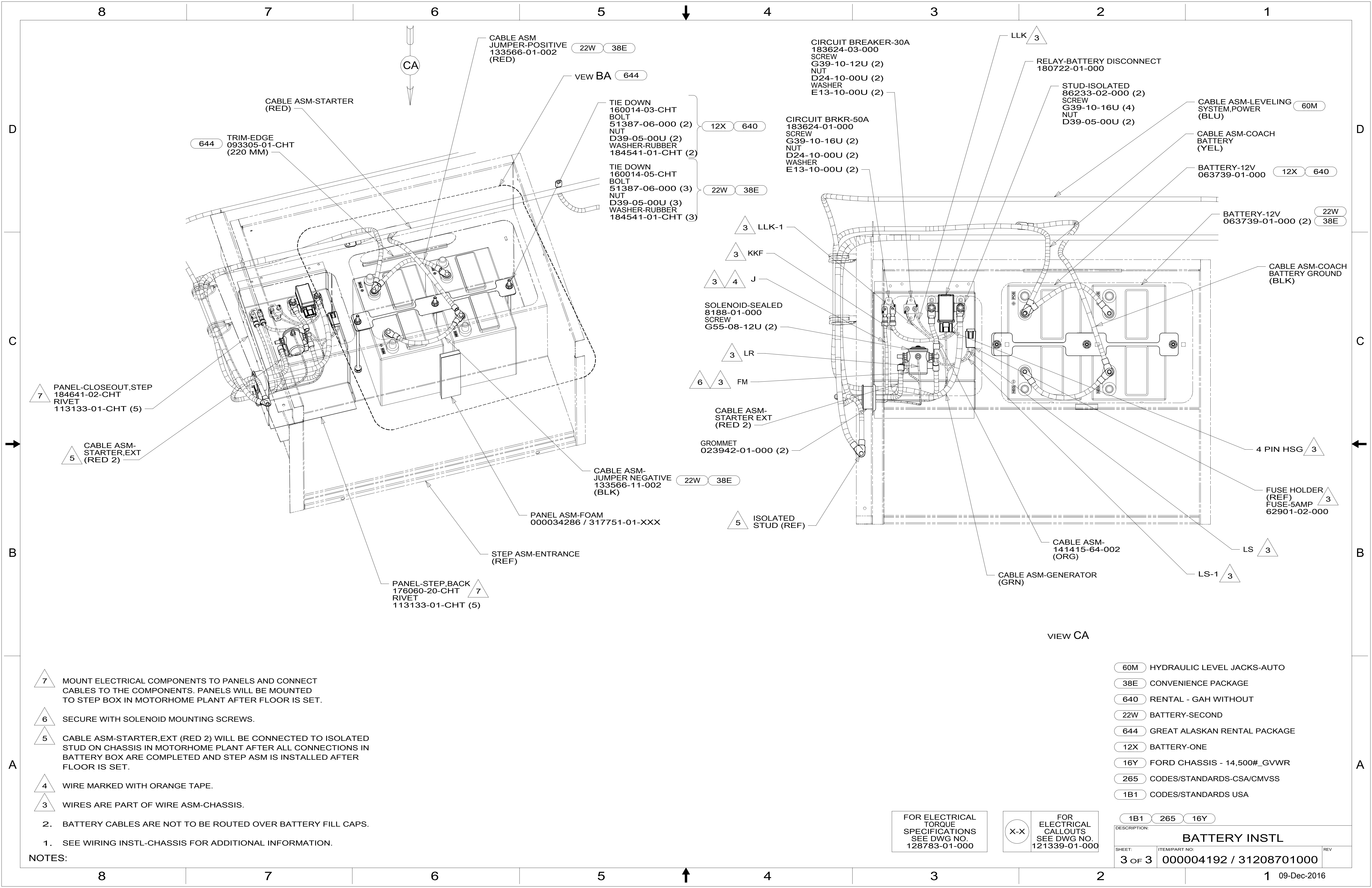
- 16Y FORD CHASSIS - 14,500#\_GVWR
- 165 FORD 11,500# GVWR 5.4L ENGIN
- 644 GREAT ALASKAN RENTAL PACKAGE
- 265 CODES/STANDARDS-CSA/CMVSS
- 1B1 CODES/STANDARDS USA

FOR ELECTRICAL  
 TORQUE  
 SPECIFICATIONS  
 SEE DWG NO.  
 128783-01-000

FOR  
 ELECTRICAL  
 CALLOUTS  
 SEE DWG NO.  
 121339-01-000

1B1	265	644	165	16Y
DESCRIPTION: <b>BATTERY INSTL</b>				
SHEET: 2 OF 3	ITEM/PART NO: 000004192 / 31208701000	REV		

8 7 6 5 4 3 2 1 09-Dec-2016



- NOTES:**
- 7 MOUNT ELECTRICAL COMPONENTS TO PANELS AND CONNECT CABLES TO THE COMPONENTS. PANELS WILL BE MOUNTED TO STEP BOX IN MOTORHOME PLANT AFTER FLOOR IS SET.
  - 6 SECURE WITH SOLENOID MOUNTING SCREWS.
  - 5 CABLE ASM-STARTER,EXT (RED 2) WILL BE CONNECTED TO ISOLATED STUD ON CHASSIS IN MOTORHOME PLANT AFTER ALL CONNECTIONS IN BATTERY BOX ARE COMPLETED AND STEP ASM IS INSTALLED AFTER FLOOR IS SET.
  - 4 WIRE MARKED WITH ORANGE TAPE.
  - 3 WIRES ARE PART OF WIRE ASM-CHASSIS.
2. BATTERY CABLES ARE NOT TO BE ROUTED OVER BATTERY FILL CAPS.
1. SEE WIRING INSTL-CHASSIS FOR ADDITIONAL INFORMATION.

- 60M HYDRAULIC LEVEL JACKS-AUTO
- 38E CONVENIENCE PACKAGE
- 640 RENTAL - GAH WITHOUT
- 22W BATTERY-SECOND
- 644 GREAT ALASKAN RENTAL PACKAGE
- 12X BATTERY-ONE
- 16Y FORD CHASSIS - 14,500#\_GVWR
- 265 CODES/STANDARDS-CSA/CMVSS
- 1B1 CODES/STANDARDS USA

FOR ELECTRICAL TORQUE SPECIFICATIONS SEE DWG NO. 128783-01-000

FOR ELECTRICAL CALLOUTS SEE DWG NO. 121339-01-000

DESCRIPTION:	1B1 265 16Y	
<b>BATTERY INSTL</b>		
SHEET:	ITEM/PART NO:	REV:
3 OF 3	000004192 / 31208701000	