

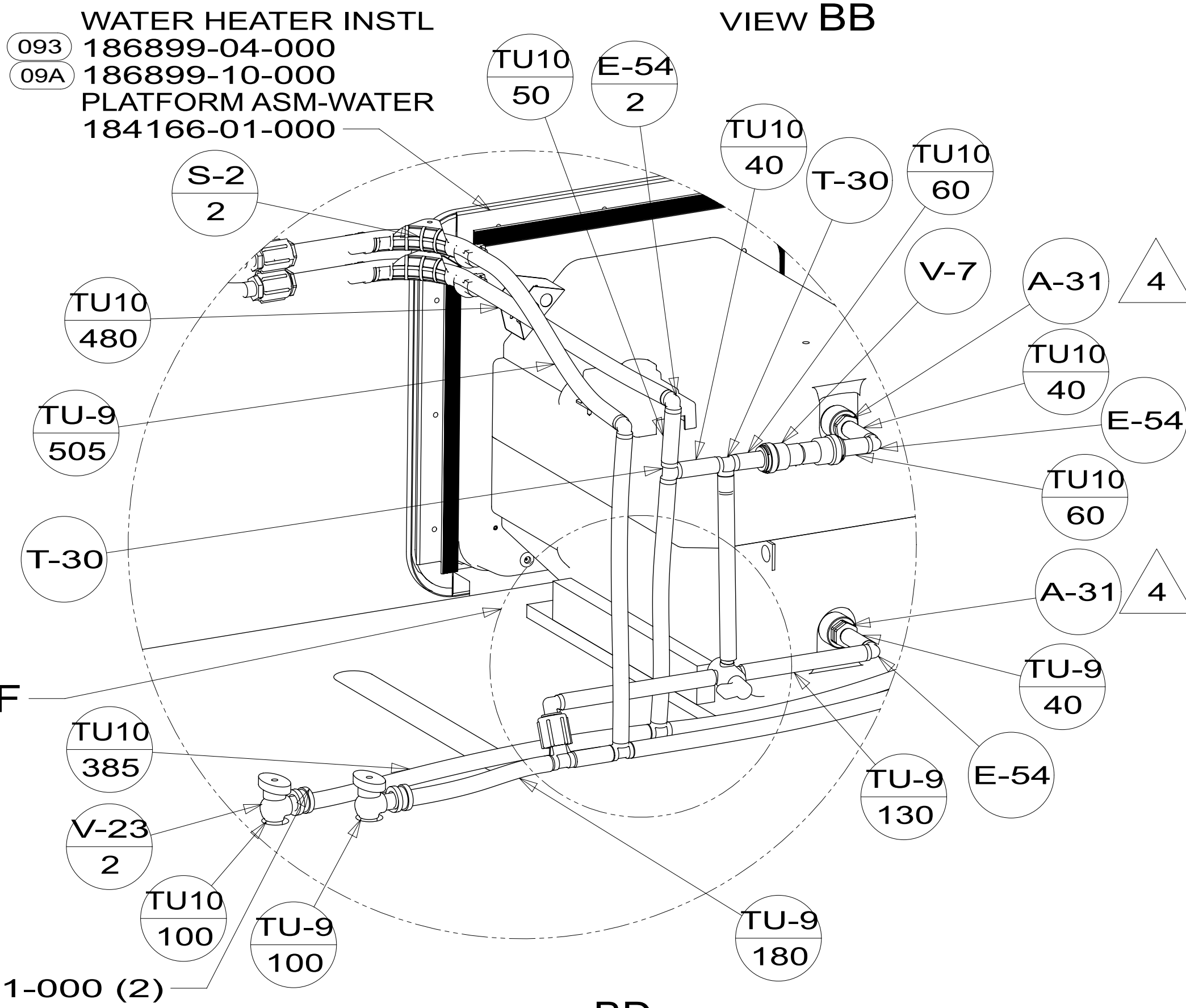
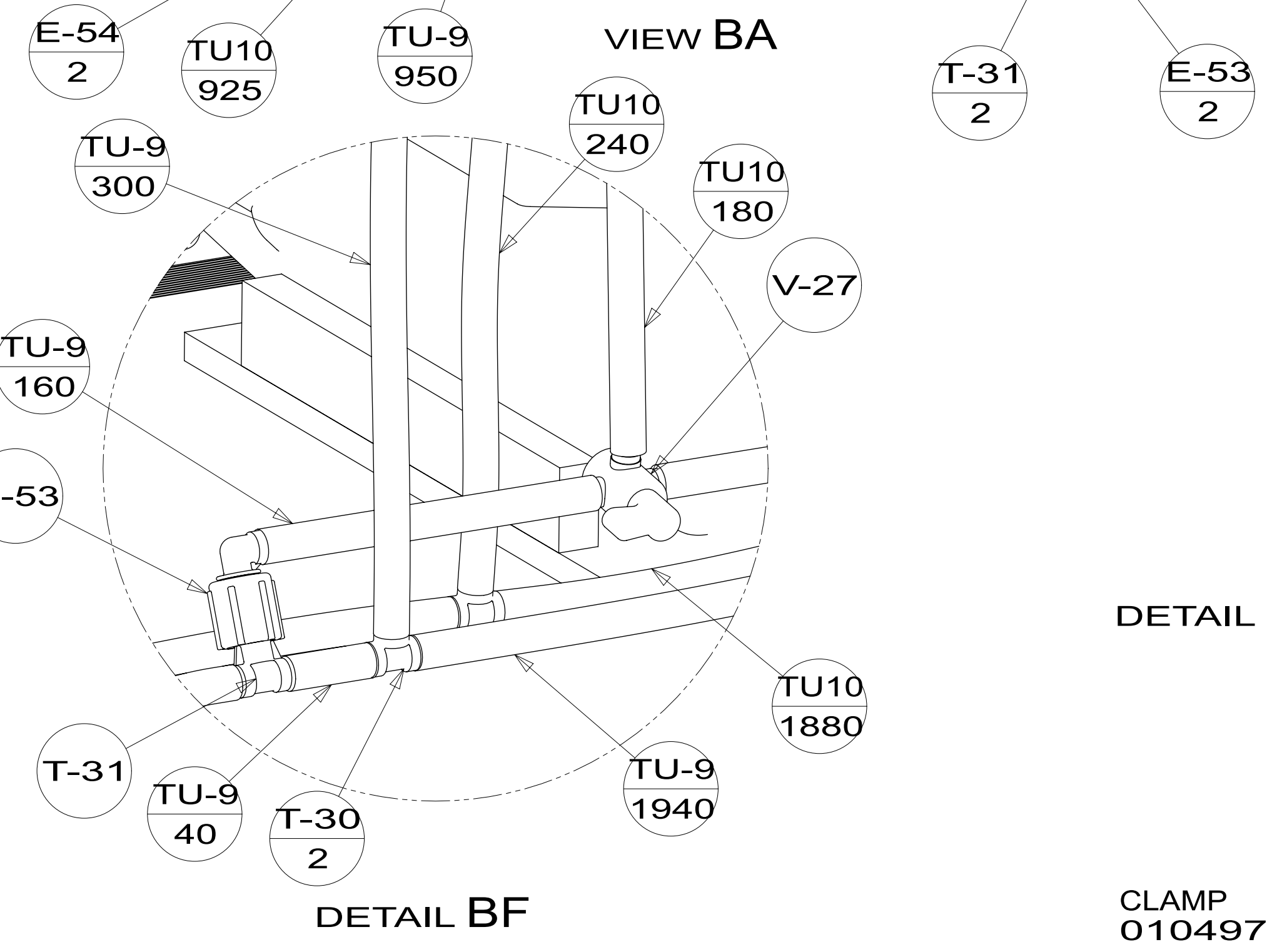
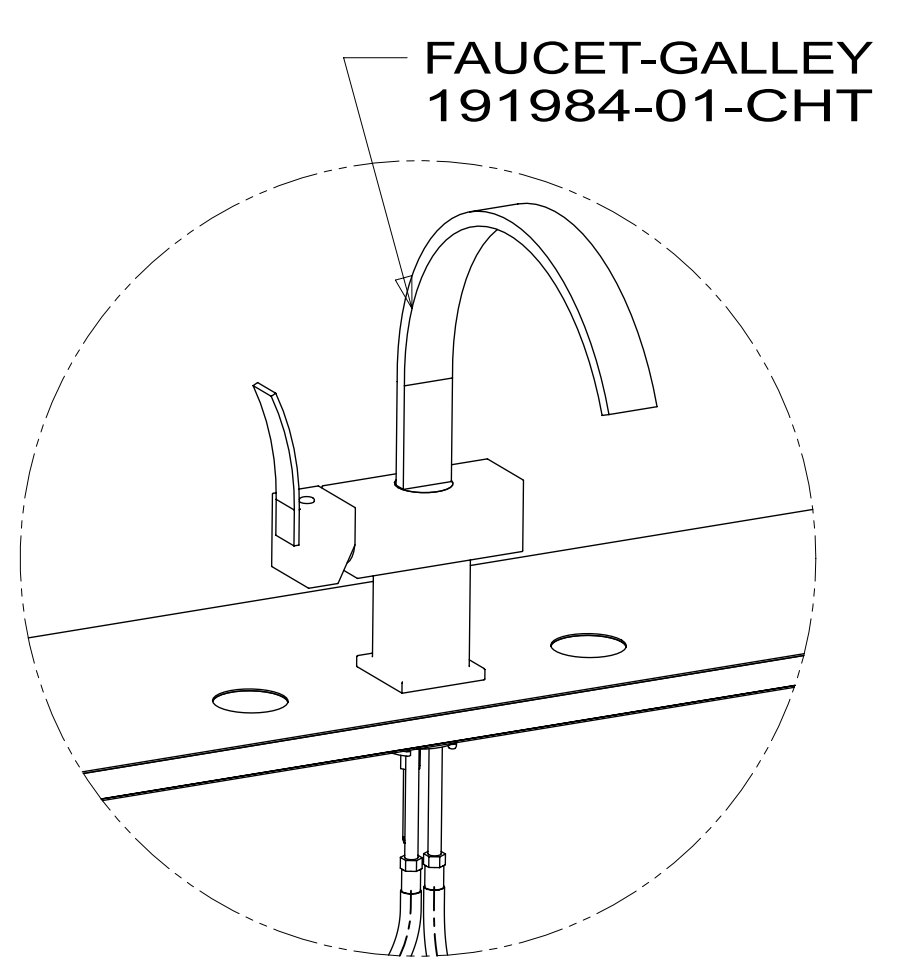
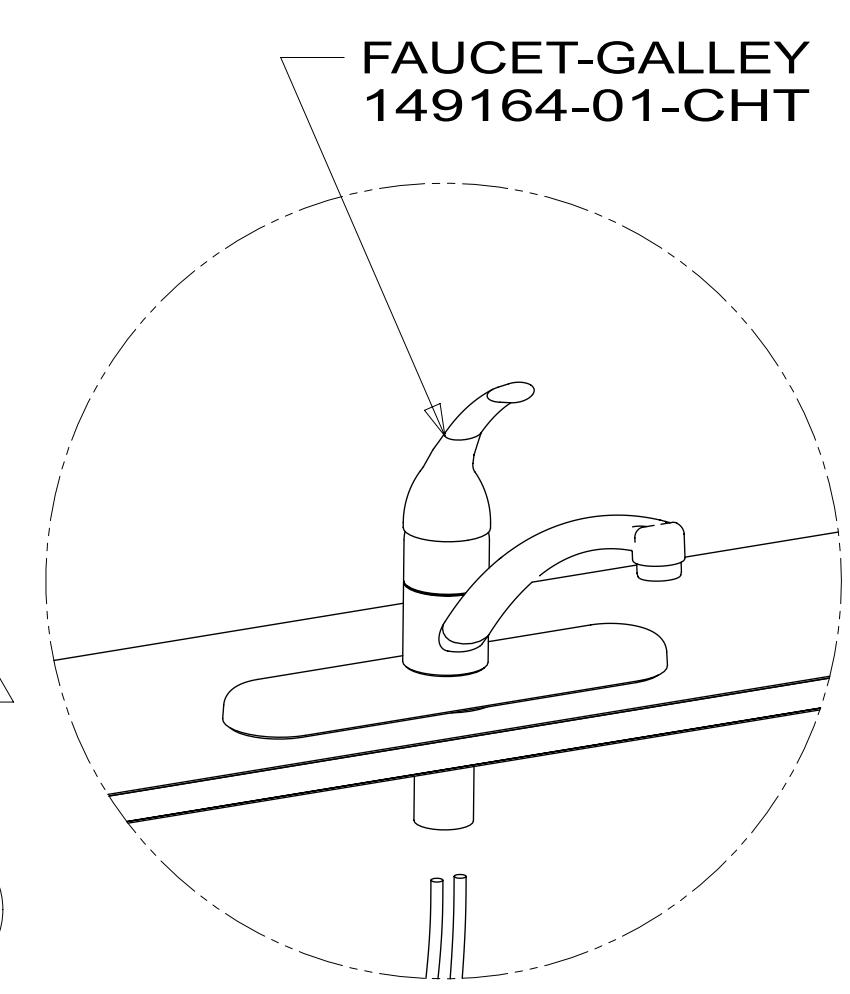
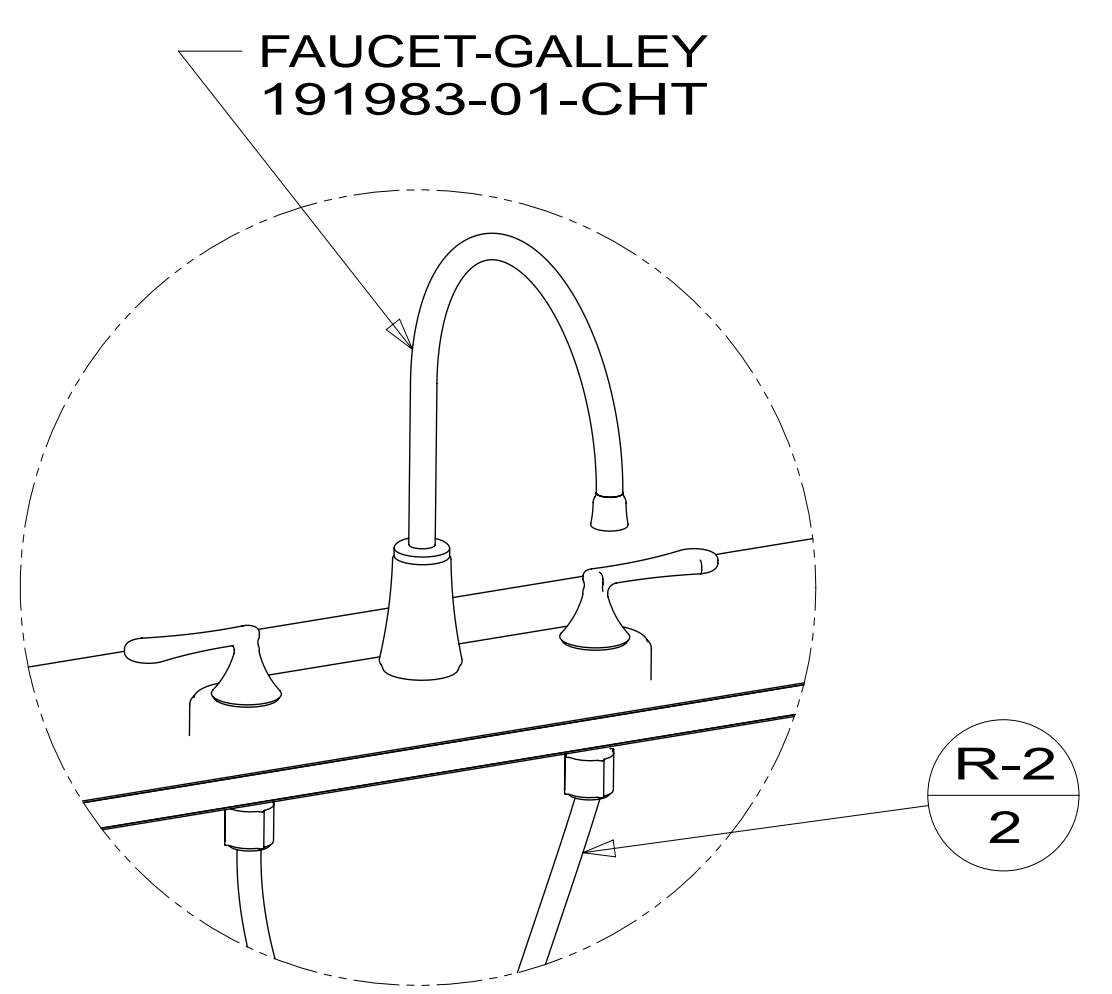
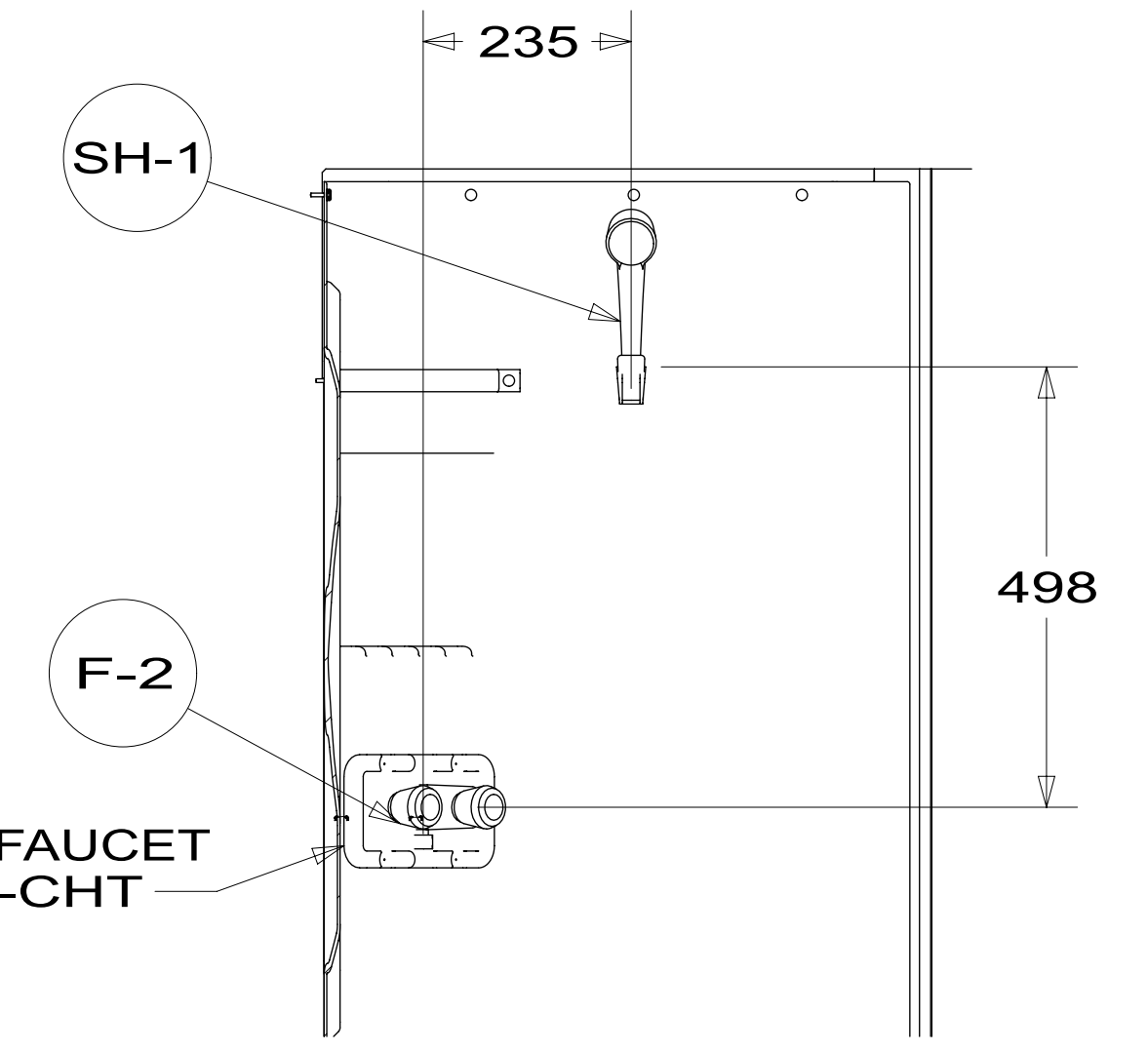
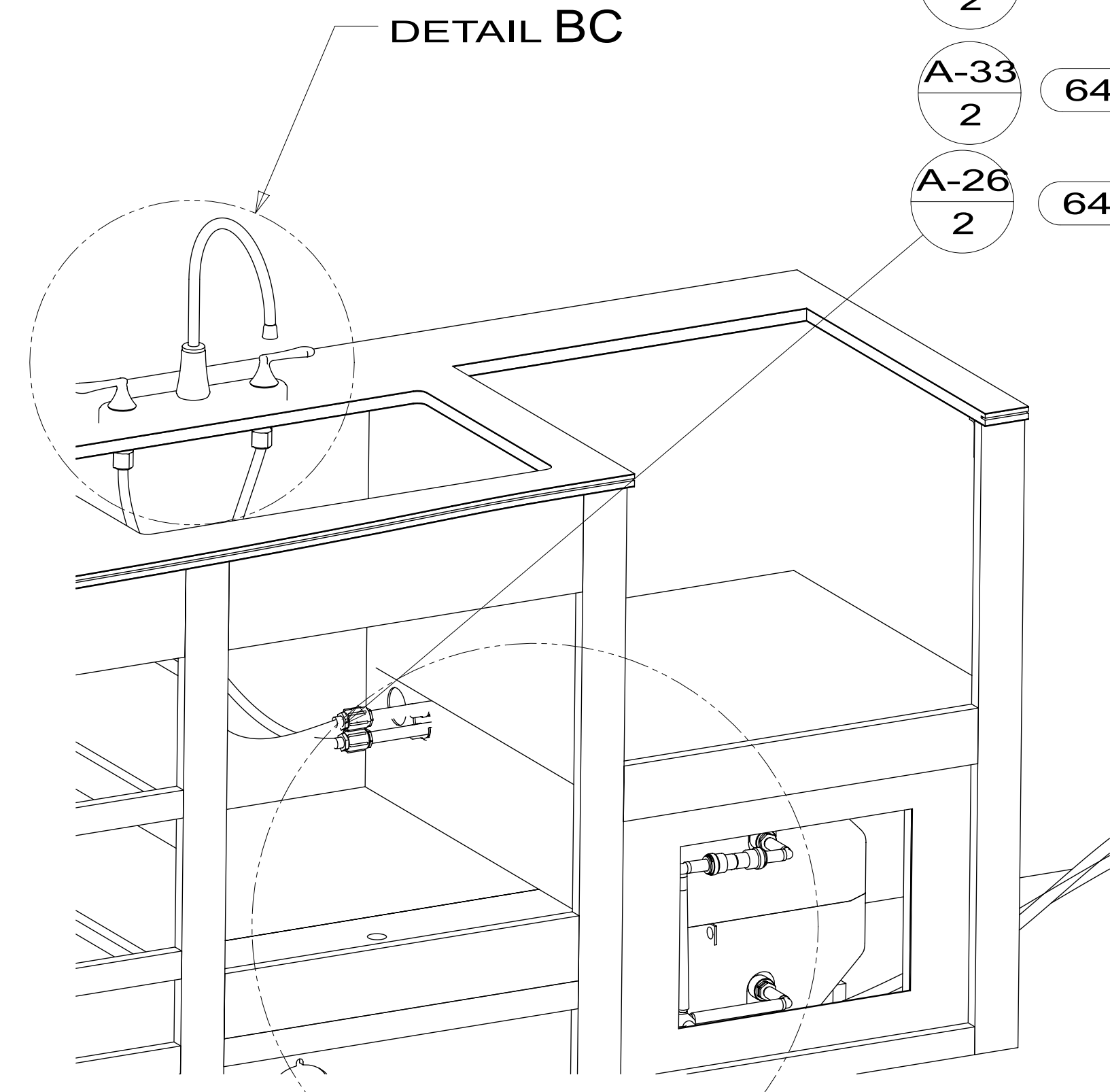
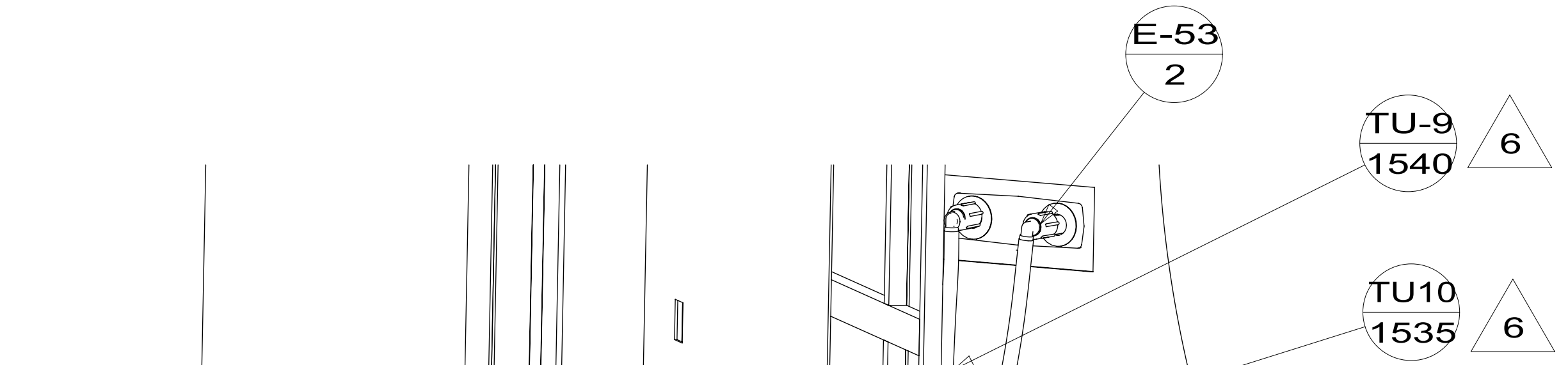
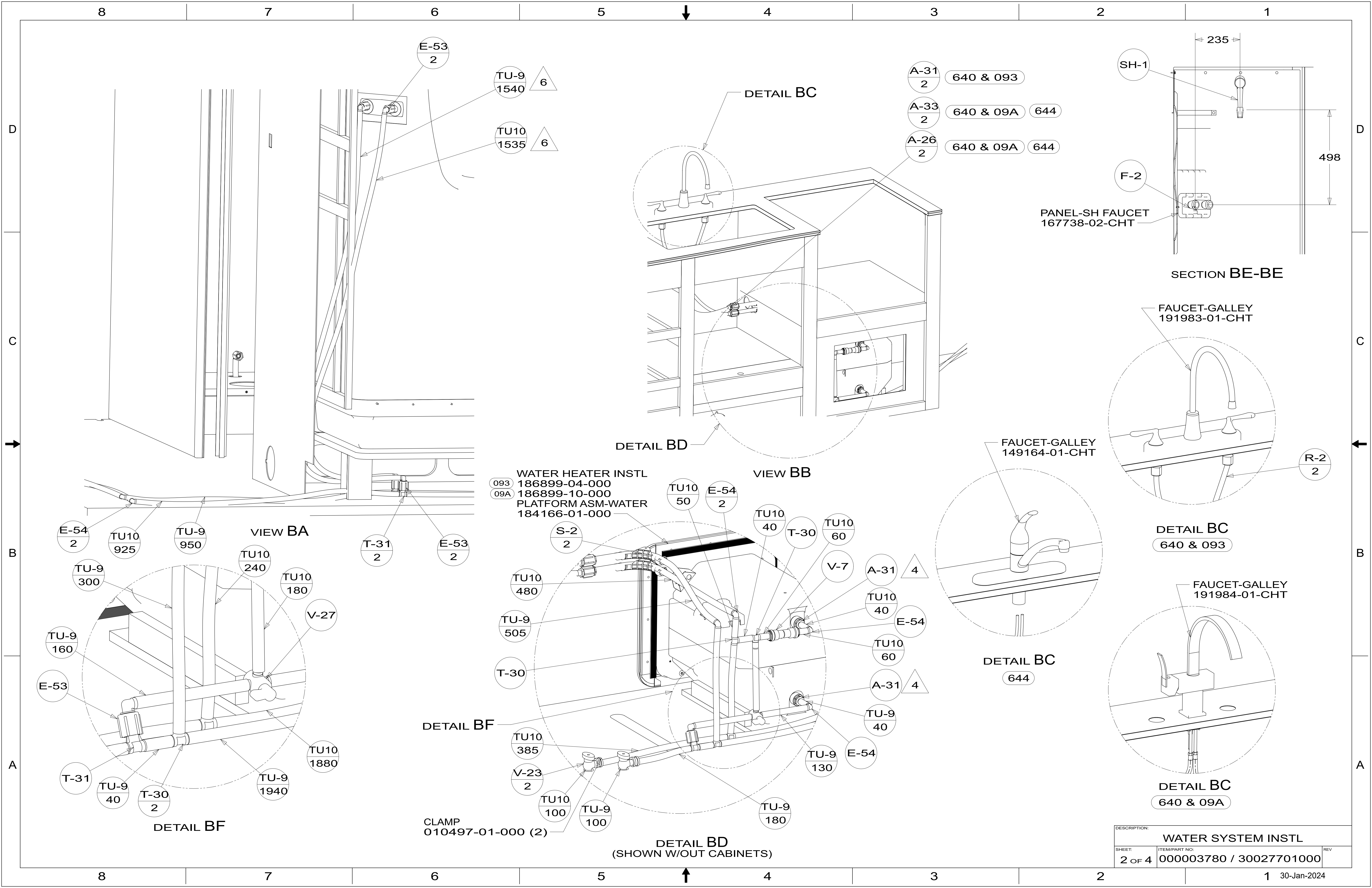
- 9. FASTEN PLATFORM TO FLOOR AFTER SIDEWALL IS SET AND HEATER IS ATTACHED TO WALL.
- 8. ALL CRIMP FITTINGS TO 1/2" PEX TUBING REQUIRE 1/2" CLAMP 140171-03-000.
- 7. ALL CRIMP FITTINGS TO 5/8" PEX TUBING REQUIRE 5/8" CLAMP 140171-04-000.
- 6. LABEL HOT AND COLD SUPPLY TUBES AND TAPE FITTING TO TUBE BEFORE CABINET SET TO PREVENT MOVEMENT.
- 5. ADD PIPE WRAP (LADDER SCRAP 110157-02-000) INSULATION.
- 4. ADD TEFLON TAPE 010405-02-000.
- 3. ALL TUBING TO BE SECURED AT 1200 INTERVALS MAXIMUM WITH CLAMP 010495-01-000 AND SCREW 000G67-10-12U OR EQUIVALENT.
- 2. TUBING TO BE INSTALLED WITH SUFFICIENT SLOPE TO PROVIDE DRAINAGE TO NEAREST VALVE.
- 1. PLASTIC FITTINGS TO BE SEALED WITH SEALANT 084456-01-000.

- 093 PREMIUM PACKAGE WITHOUT
- 09A PREMIUM PACKAGE
- 38E CONVENIENCE PACKAGE
- 640 RENTAL - GAH WITHOUT
- 644 GREAT ALASKAN RENTAL PACKAGE

WINNEBAGO[®]
COPYRIGHT 2024 WINNEBAGO INDUSTRIES, INC.

DSNR:		ALL DIMENSIONS ARE IN MILLIMETERS	
DFTR:			
UNSPECIFIED TOLERANCES:		MATERIAL:	
WHOLE DIM (X)	: 3		
ONE-PLACE (X.X)	: 1.5		
TWO-PLACE (X.XX)	: 0.50		
ANGLE	: 1°		
REFER TO ES0018 FOR FASTENER TIGHTENING GUIDELINES		WEIGHT: (LBS)	FIRST USED: (REF)
			17 326A
DESCRIPTION:			
WATER SYSTEM INSTL			
SHEET:	ITEM/PART NO.:	REV:	
1 OF 4	000003780 / 30027701000		

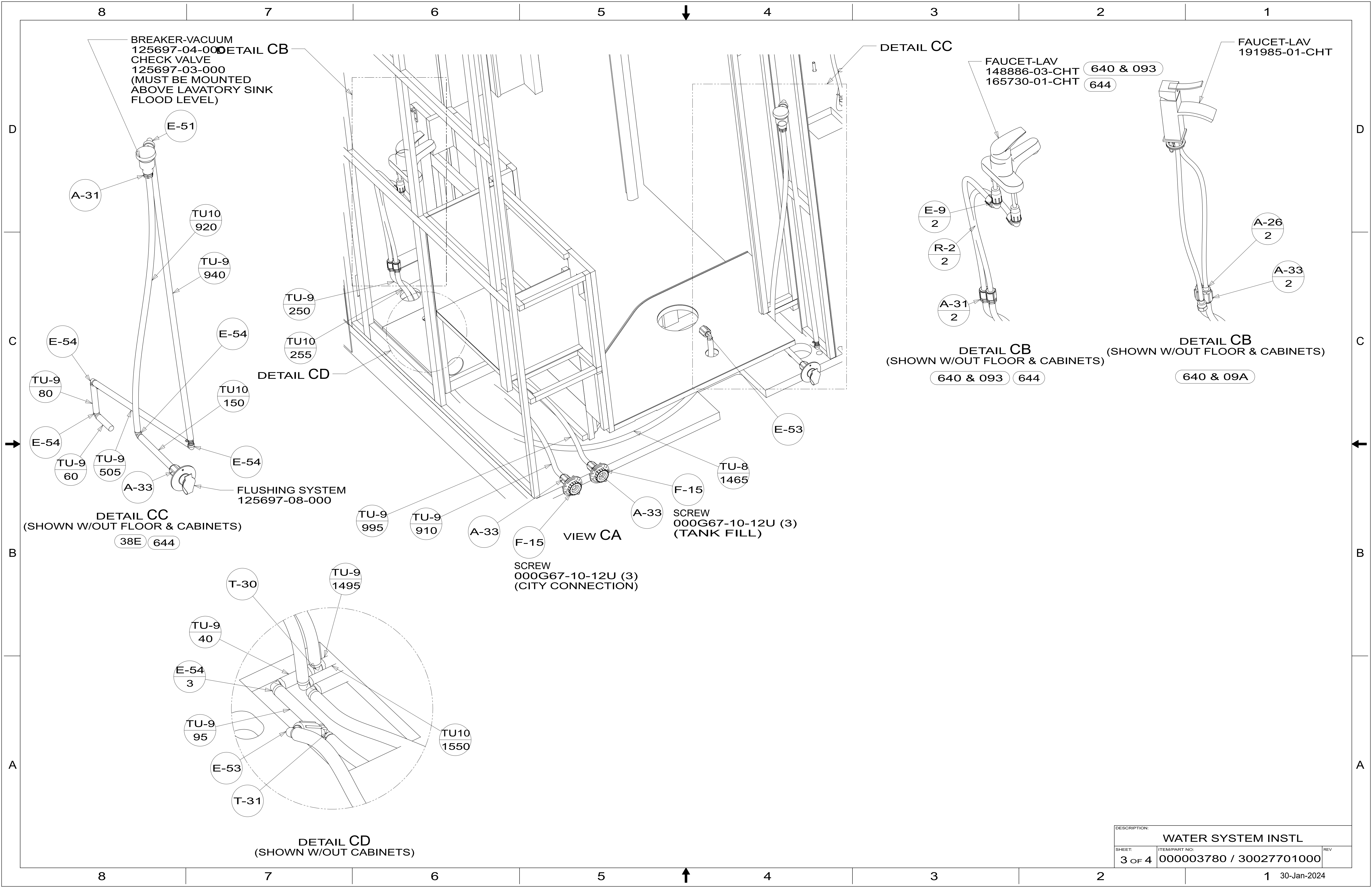
X-X
FOR WATER CALLOUTS SEE DWG NO. 000209446 / 303369-01-000



DETAIL BD (SHOWN W/OUT CABINETS)

WATER HEATER INSTL
 093 186899-04-000
 09A 186899-10-000
 PLATFORM ASM-WATER
 184166-01-000

DESCRIPTION: WATER SYSTEM INSTL		
SHEET: 2 OF 4	ITEM/PART NO: 000003780 / 30027701000	REV
30-Jan-2024		



BREAKER-VACUUM
125697-04-000
CHECK VALVE
125697-03-000
(MUST BE MOUNTED
ABOVE LAVATORY SINK
FLOOD LEVEL)

DETAIL CB
E-51
A-31
TU10 920
TU-9 940
E-54
TU-9 80
E-54
TU-9 60
TU-9 505
A-33
FLUSHING SYSTEM
125697-08-000
DETAIL CC
(SHOWN W/OUT FLOOR & CABINETS)
38E 644

DETAIL CD

DETAIL CD
(SHOWN W/OUT CABINETS)
T-30
TU-9 1495
TU-9 40
E-54 3
TU-9 95
E-53
T-31
TU10 1550

TU-9 250
TU10 255

TU-9 995
TU-9 910

VIEW CA
F-15
SCREW
000G67-10-12U (3)
(CITY CONNECTION)

A-33
F-15
TU-8 1465
SCREW
000G67-10-12U (3)
(TANK FILL)

DETAIL CC

FAUCET-LAV
148886-03-CHT
165730-01-CHT
640 & 093
644

E-9 2
R-2 2
A-31 2

DETAIL CB
(SHOWN W/OUT FLOOR & CABINETS)
640 & 093 644

FAUCET-LAV
191985-01-CHT

A-26 2
A-33 2

DETAIL CB
(SHOWN W/OUT FLOOR & CABINETS)
640 & 09A

DESCRIPTION: WATER SYSTEM INSTL		
SHEET: 3 OF 4	ITEM/PART NO: 000003780 / 30027701000	REV
		1 30-Jan-2024

