

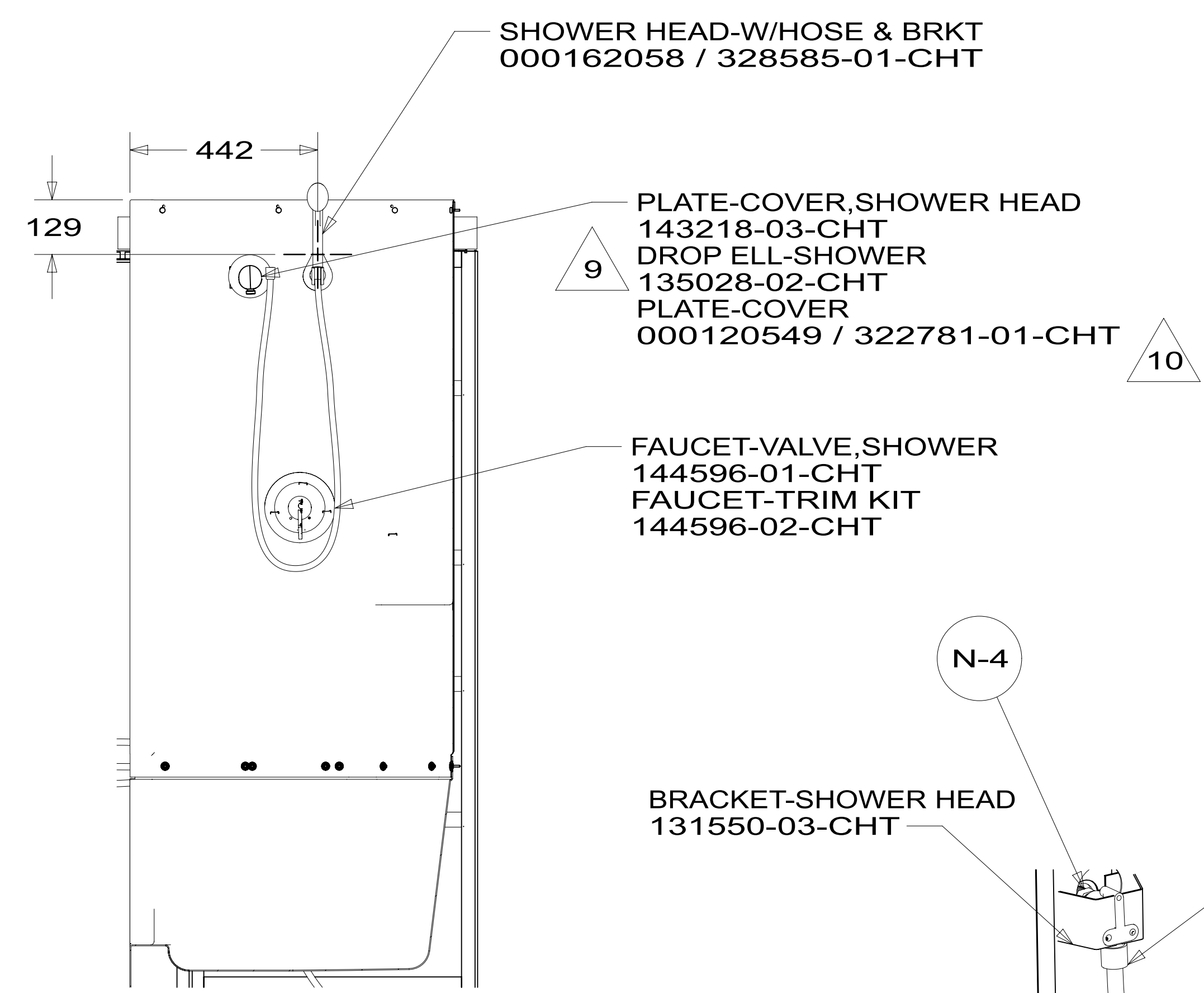
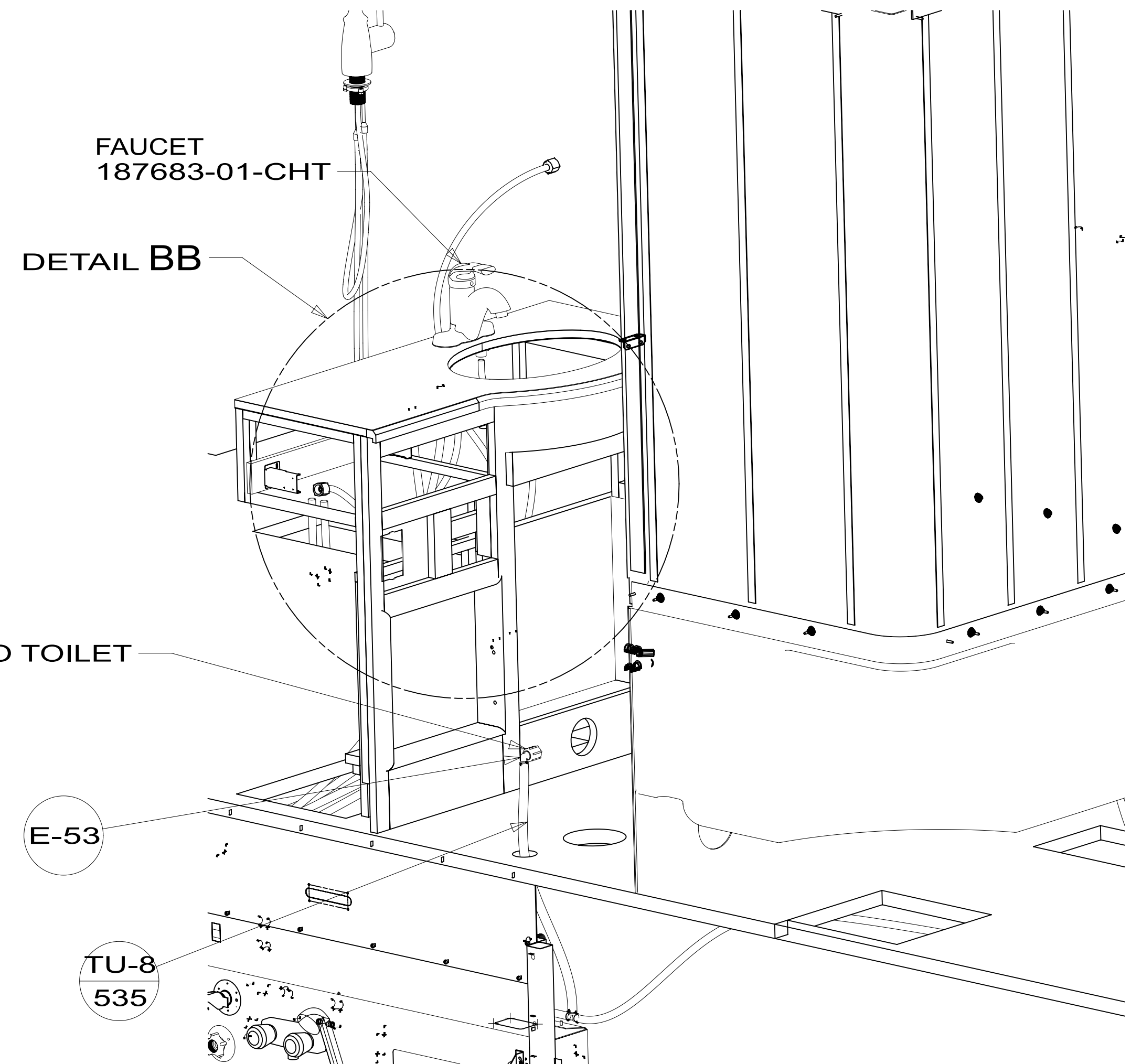
- NOTES:**
- 10 FOR INSTALLATION USE SILICON-ADHESIVE 131264-05-CHT. APPLY ON TOP OF PLATE, PLACE COVER ON, AND PUT ADHESIVE AROUND CORNER.
  - 9 ELBOW TO BE TURN 45° BELOW HORIZONTAL LINE.
  - 8. ALL CRIMP FITTINGS TO 1/2" PEX TUBING REQUIRE 1/2" CLAMP 000156249 / 326670-01-000.
  - 7. ALL CRIMP FITTINGS TO 5/8" PEX TUBING REQUIRE 5/8" CLAMP 000156248 / 326669-01-000.
  - 6 LABEL HOT AND COLD SUPPLY TUBES AND TAPE FITTING TO TUBE BEFORE CABINET SET TO PREVENT MOVEMENT.
  - 5 ADD PIPE WRAP (LADDER SCRAP 110157-02-000) INSULATION.
  - 4 ADD TEFLON TAPE 010405-02-000.
  - 3. ALL TUBING TO BE SECURED AT 1200 INTERVALS MAXIMUM WITH CLAMP 010495-01-000 AND SCREW 000G67-10-12U OR EQUIVALENT.
  - 2. TUBING TO BE INSTALLED WITH SUFFICIENT SLOPE TO PROVIDE DRAINAGE TO NEAREST VALVE.
  - 1. PLASTIC FITTINGS TO BE SEALED WITH SEALANT 084456-01-000.

- 1BU WTR HTR TKLS W/RECIRCUL PUMP
- 53K WTR HTR-10GAL/ELECTRIC/LPGAS
- 21M WASHER/DRYER PREP
- 21S WASHER & DRYER-PAIR

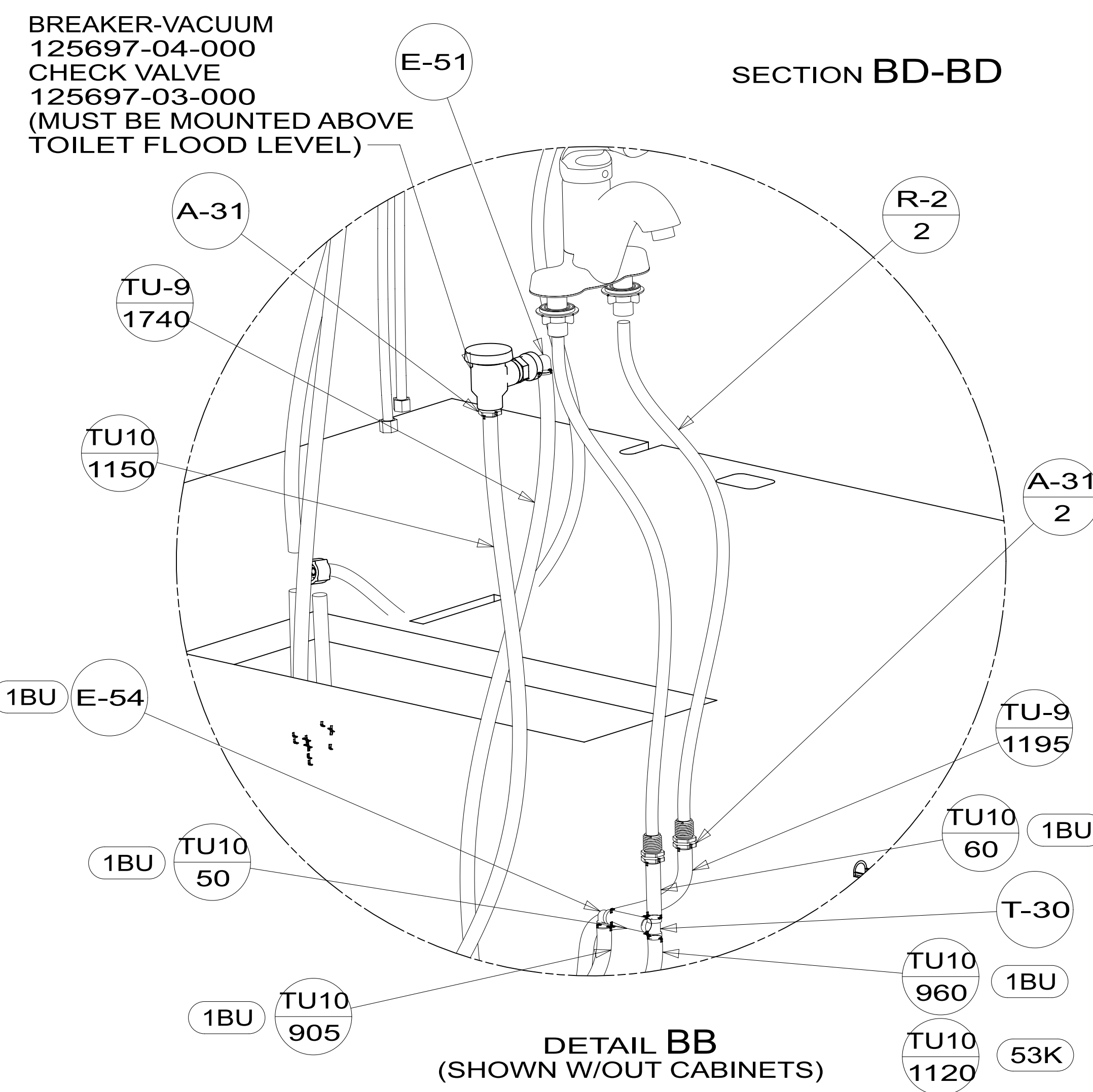
**WINNEBAGO**  
COPYRIGHT 2024 WINNEBAGO INDUSTRIES, INC.

DSNR:		ALL DIMENSIONS ARE IN MILLIMETERS	
DIFTR:			
UNSPECIFIED TOLERANCES:		MATERIAL:	
WHOLE DIM (X)	± 3		
ONE-PLACE (X.X)	± 1.5		
TWO-PLACE (X.XX)	± 0.50		
ANGLE	± 1°		
REFER TO ES0018 FOR FASTENER TIGHTENING GUIDELINES		WEIGHT: (LBS)	FIRST USED: (REF)
			17 L34T
DESCRIPTION: WATER SYSTEM INSTL			
SHEET:	ITEM/PART NO:	REV	
1 OF 5	000003689 / 31235901000		

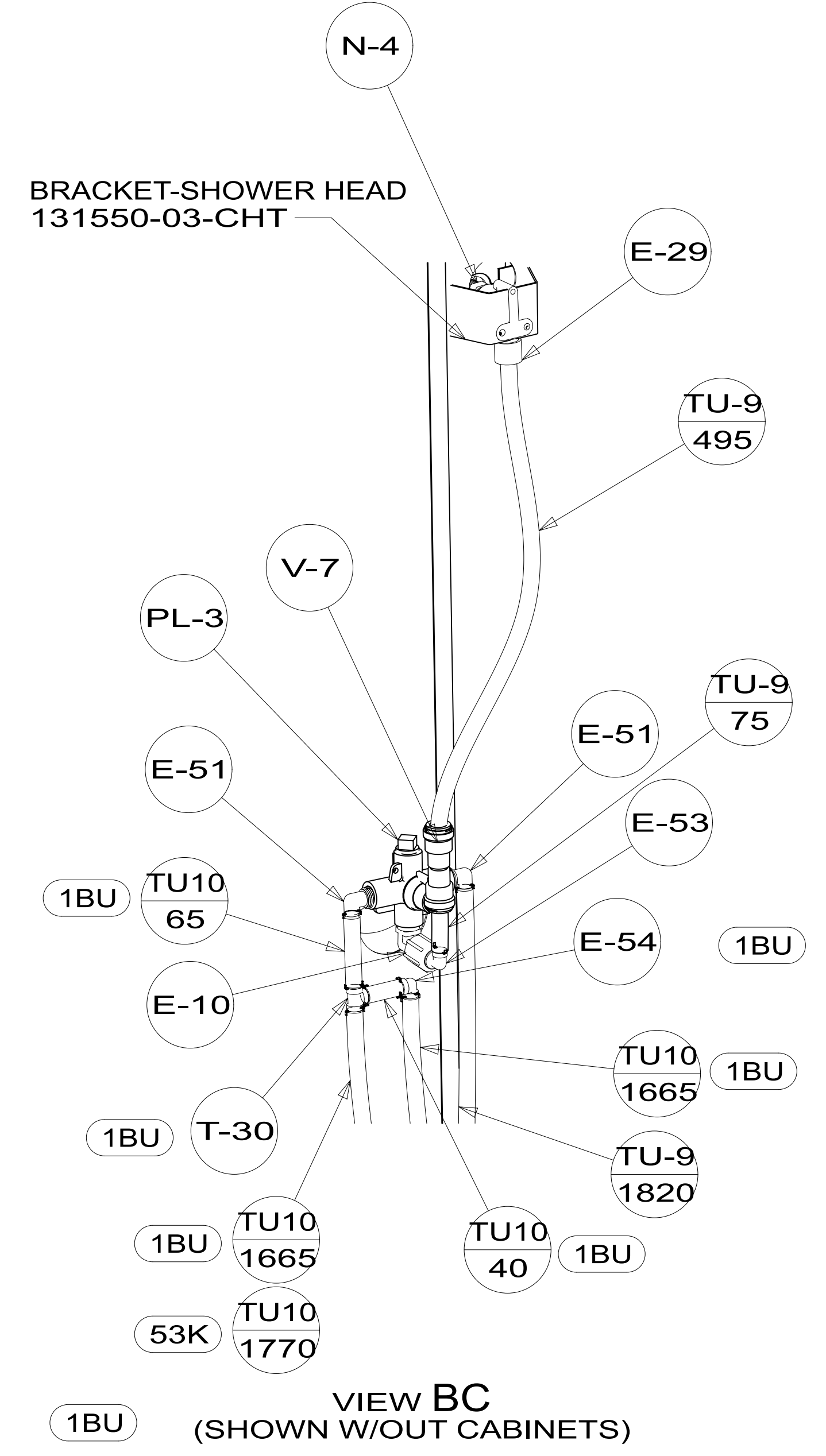
X-X  
FOR WATER CALLOUTS SEE DWG NO. 000209446 / 303369-01-000



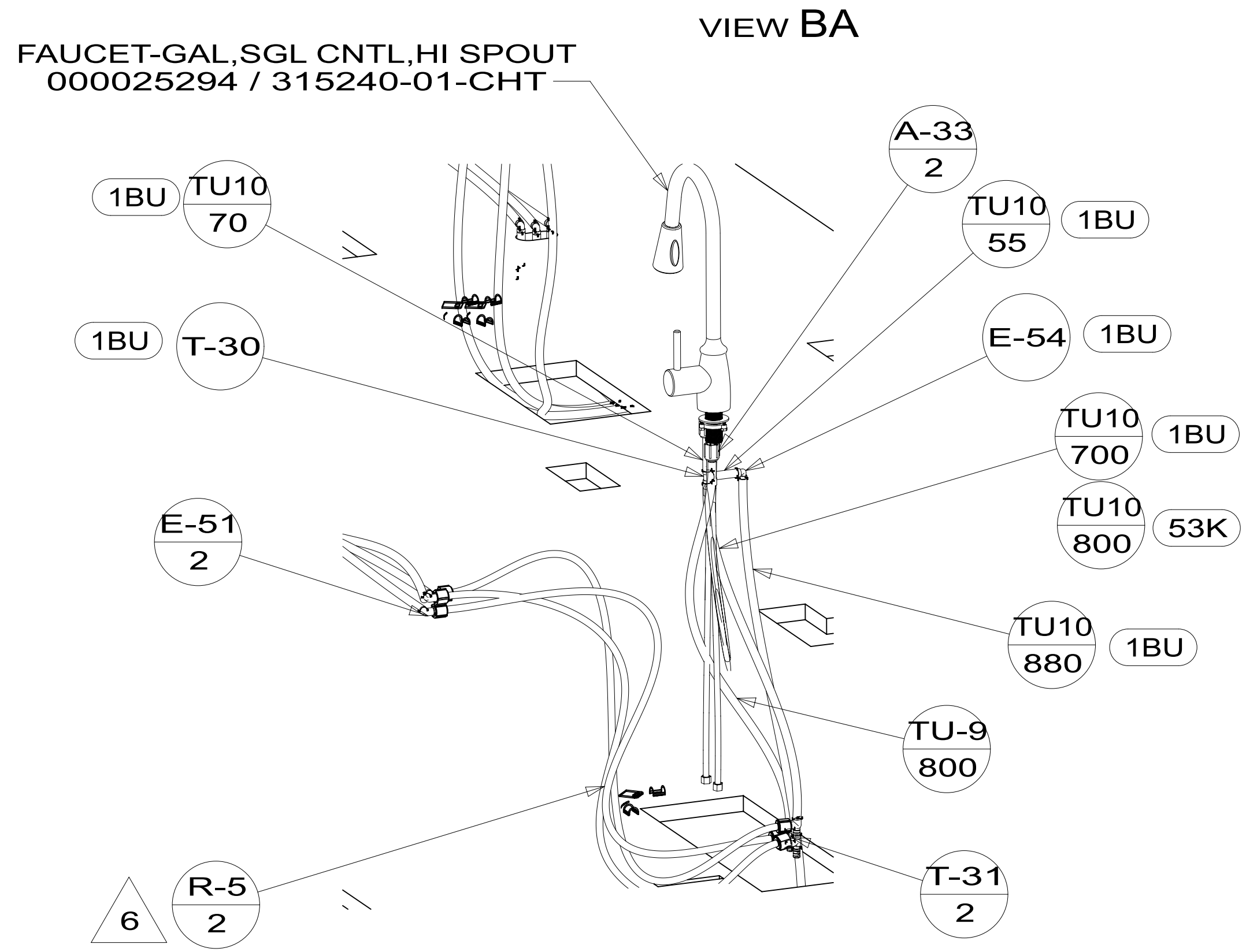
SECTION BD-BD



DETAIL BB  
(SHOWN W/OUT CABINETS)

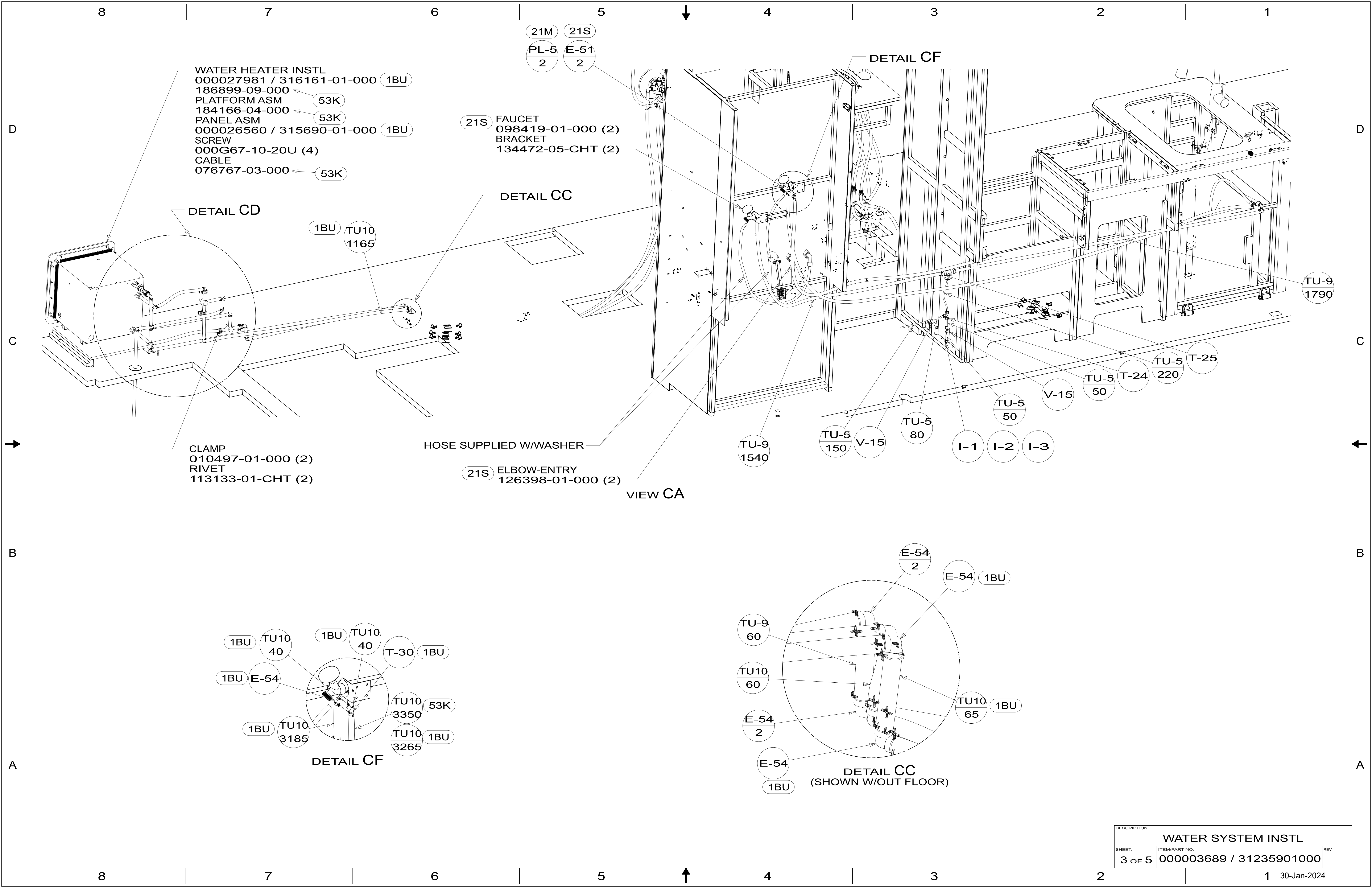


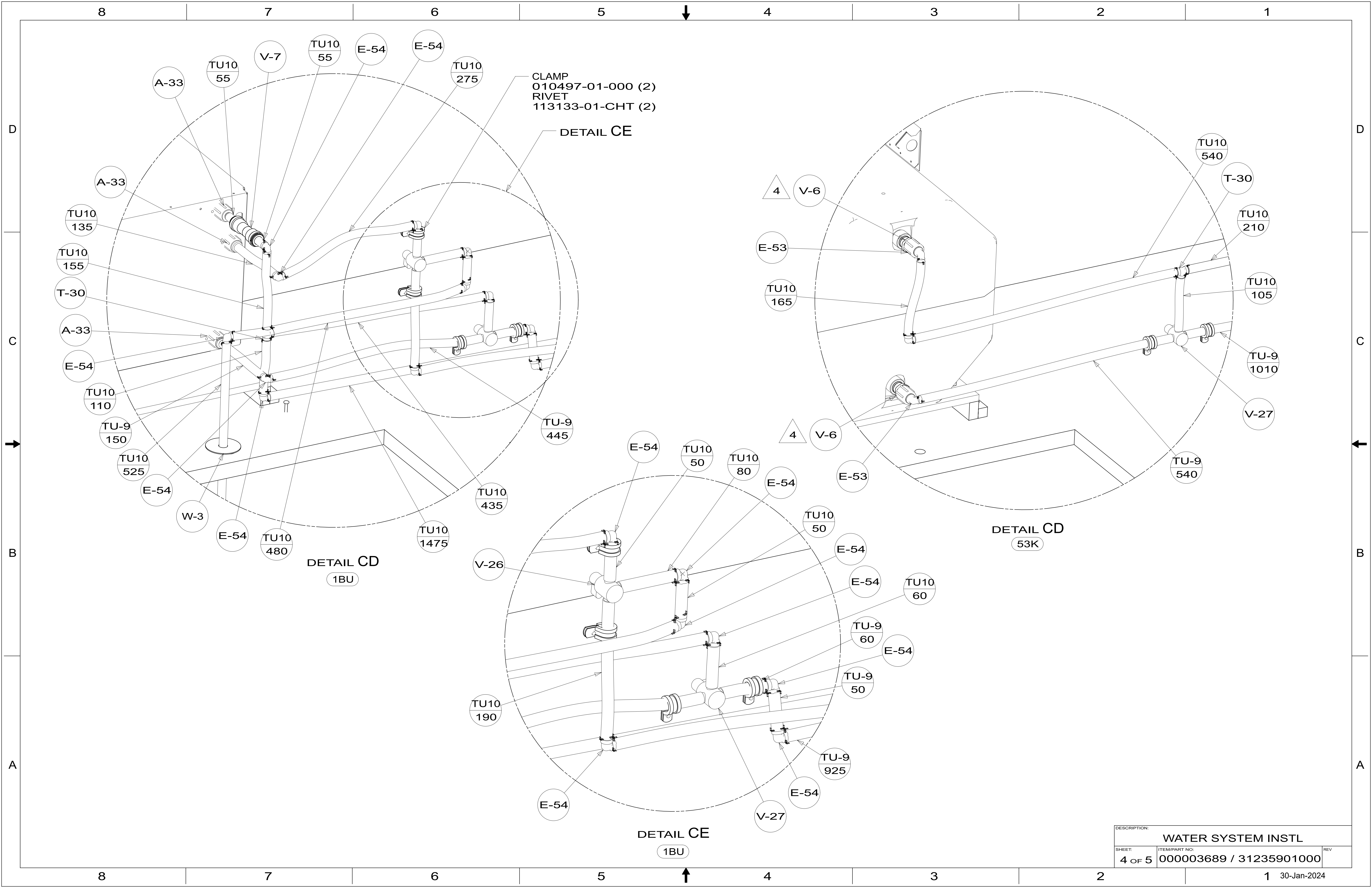
VIEW BC  
(SHOWN W/OUT CABINETS)



VIEW BE

DESCRIPTION:		
WATER SYSTEM INSTL		
SHEET:	ITEM/PART NO.:	REV
2 OF 5	000003689 / 31235901000	





CLAMP  
010497-01-000 (2)  
RIVET  
113133-01-CHT (2)

DETAIL CE

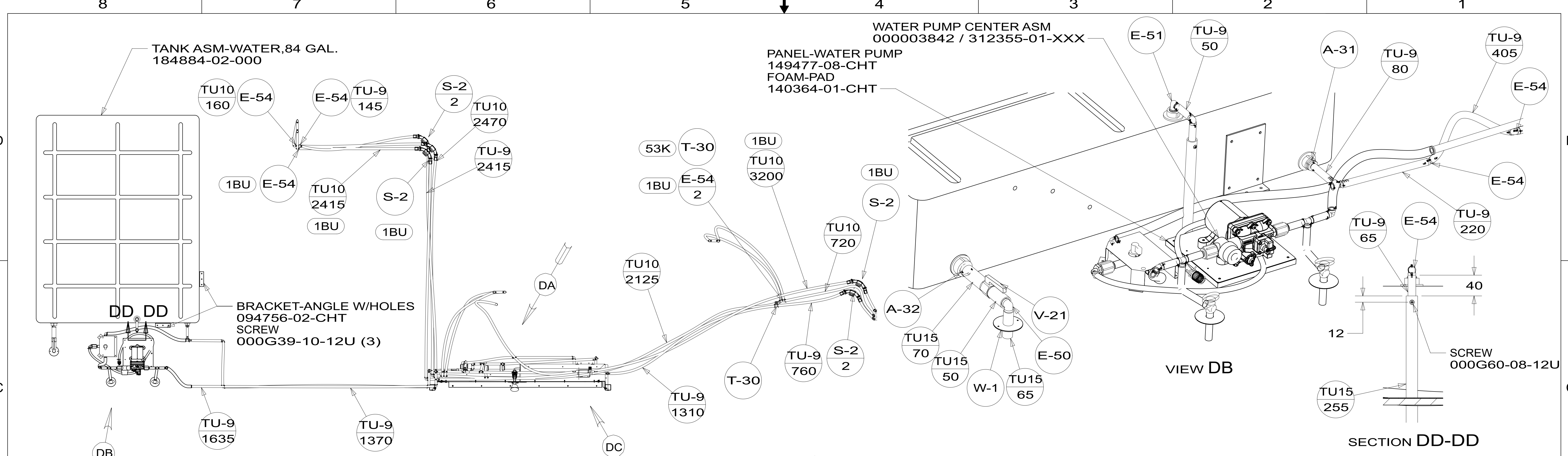
DETAIL CD  
53K

DETAIL CD  
1BU

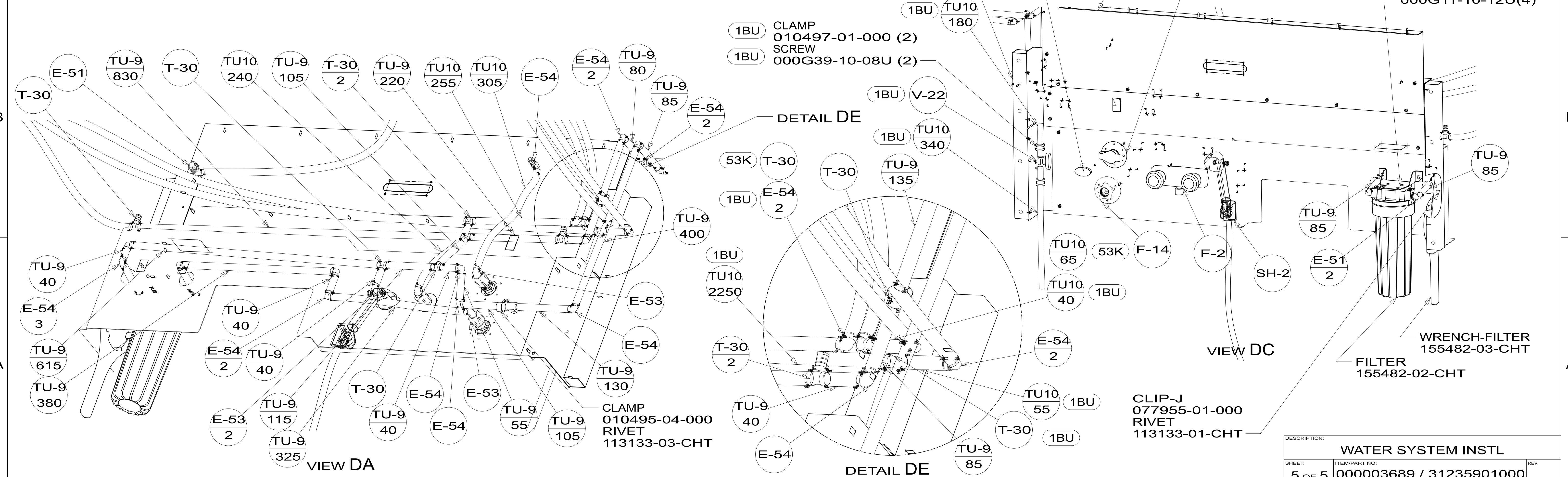
DETAIL CE  
1BU

DESCRIPTION: WATER SYSTEM INSTL		
SHEET: 4 OF 5	ITEM/PART NO: 000003689 / 31235901000	REV





**TOP VIEW SHOWING LINE UNDER FLOOR**



DESCRIPTION:		
WATER SYSTEM INSTL		
SHEET:	ITEM/PART NO.:	REV
5 OF 5	000003689 / 31235901000	