

12. FOR INSTALLATION USE SILICON ADHESIVE 131264-05-CHT. APPLY ON TOP OF PLATE, PLACE COVER ON, AND POT ADHESIVE AROUND COVER.

11. VALVE MUST REMAIN OPEN AFTER WATER TEST.

10. INSTALL FAUCET W/OUT BASEPLATE.

9. ELBOW TO BE TURN 45° BELOW HORIZONTAL LINE.

8. ALL CRIMP FITTINGS TO 1/2" PEX TUBING REQUIRE 1/2" CLAMP 140171-03-000.

7. ALL CRIMP FITTINGS TO 5/8" PEX TUBING REQUIRE 5/8" CLAMP 140171-04-000.

6. LABEL HOT AND COLD SUPPLY TUBES AND TAPE FITTING TO TUBE BEFORE CABINET SET TO PREVENT MOVEMENT.

5. ADD PIPE WRAP (LADDER SCRAP 110157-02-000) INSULATION.

4. ADD TEFLON TAPE 010405-02-000.

3. ALL TUBING TO BE SECURED AT 1200 INTERVALS MAXIMUM WITH CLAMP 010495-01-000 AND SCREW 000G67-10-12U OR EQUIVALENT.

2. TUBING TO BE INSTALLED WITH SUFFICIENT SLOPE TO PROVIDE DRAINAGE TO NEAREST VALVE.

1. PLASTIC FITTINGS TO BE SEALED WITH SEALANT 084456-01-000.

NOTES:

- 1B2) WTR HTR-10GAL/ELEC/LP/MTRAIID
- 1BT) WATER HEATER, TANKLESS
- 21M) WASHER/DRYER PREP
- 21S) WASHER & DRYER-PAIR
- 15L) REFR/FRZR 2DOOR RESIDENTIAL
- 79W) REFRIGERATOR-4 DOOR
- WIN) WINNEBAGO ONLY
- ITA) ITASCA ONLY

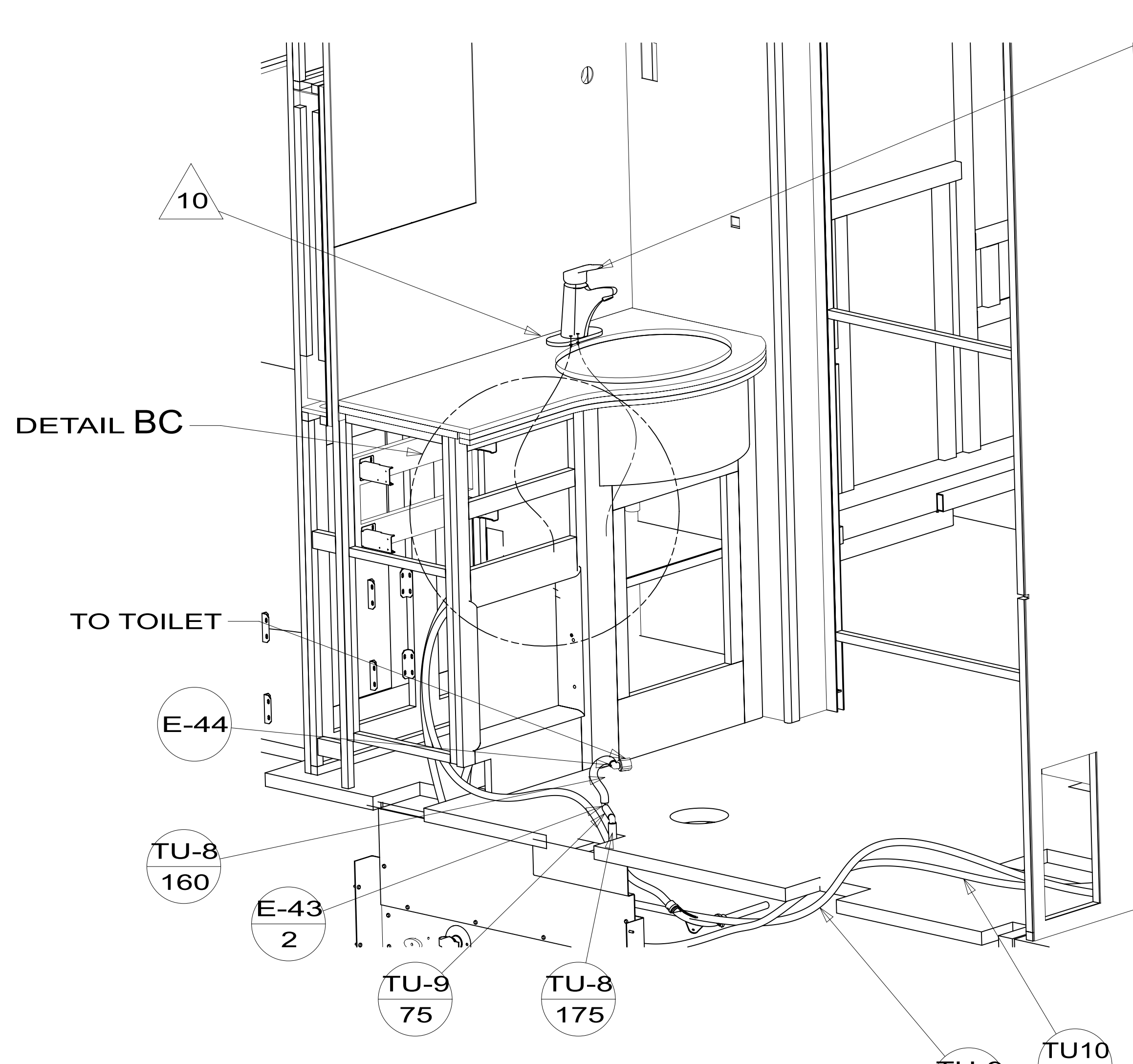


DSNR:		ALL DIMENSIONS ARE IN MILLIMETERS	
DIFR:			
UNSPECIFIED TOLERANCES:		MATERIAL:	
WHOLE DIM (X)	3		
ONE-PLACE (X.X)	1.5		
TWO-PLACE (X.XX)	0.50		
ANGLE	1°		
REFER TO ES0018 FOR FASTENER TIGHTENING GUIDELINES		WEIGHT: (LBS)	FIRST USED: (REF)
DESCRIPTION:		17 P36M	
WATER SYSTEM INSTL			
SHEET:	ITEM/PART NO.:	REV:	
1 OF 5	000003596 / 31040001000		
REF:		1 04-Jul-2022	

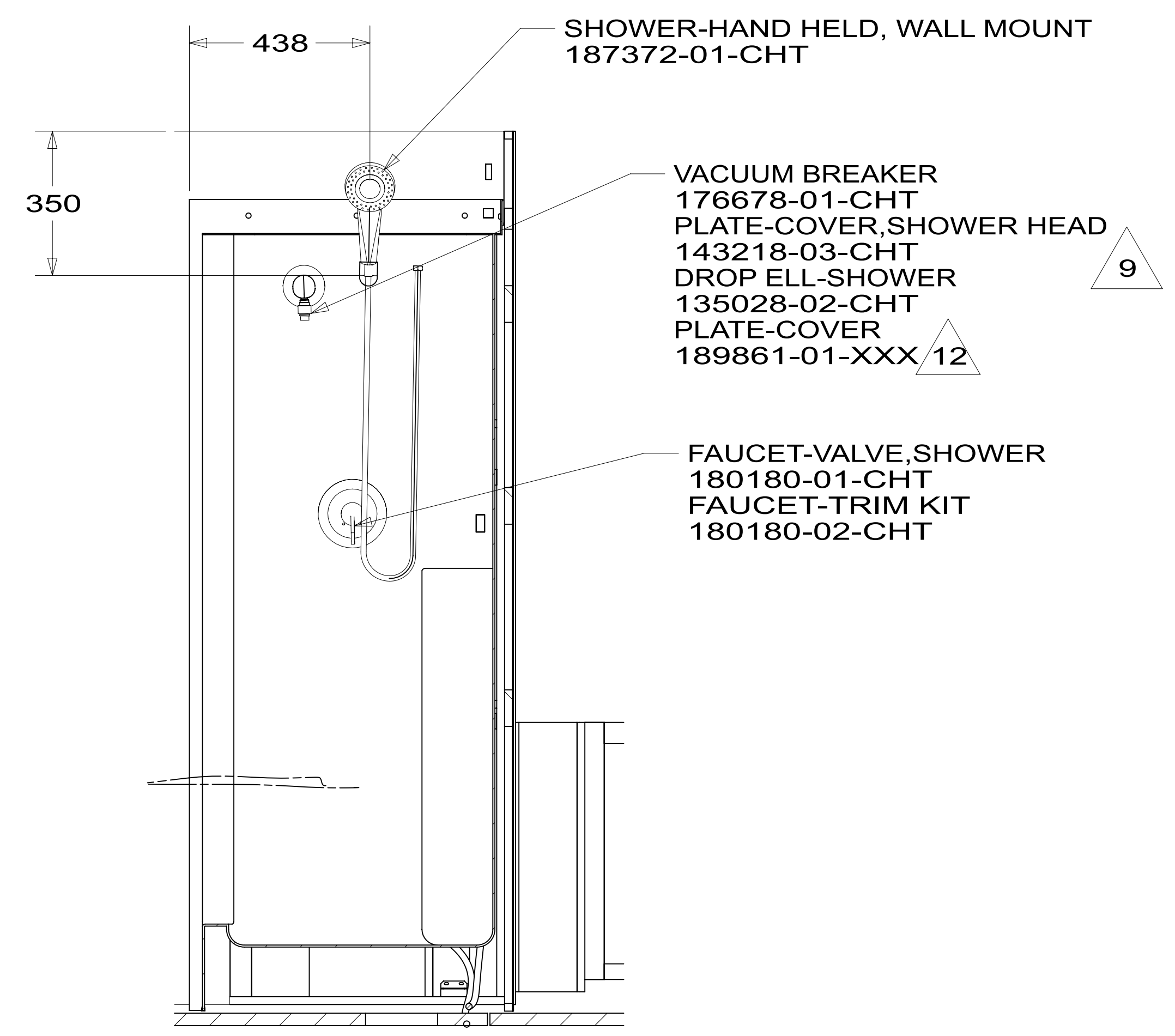
X-X
FOR WATER CALLOUTS SEE DWG NO. 000209446 / 303369-01-000

*302037 *A

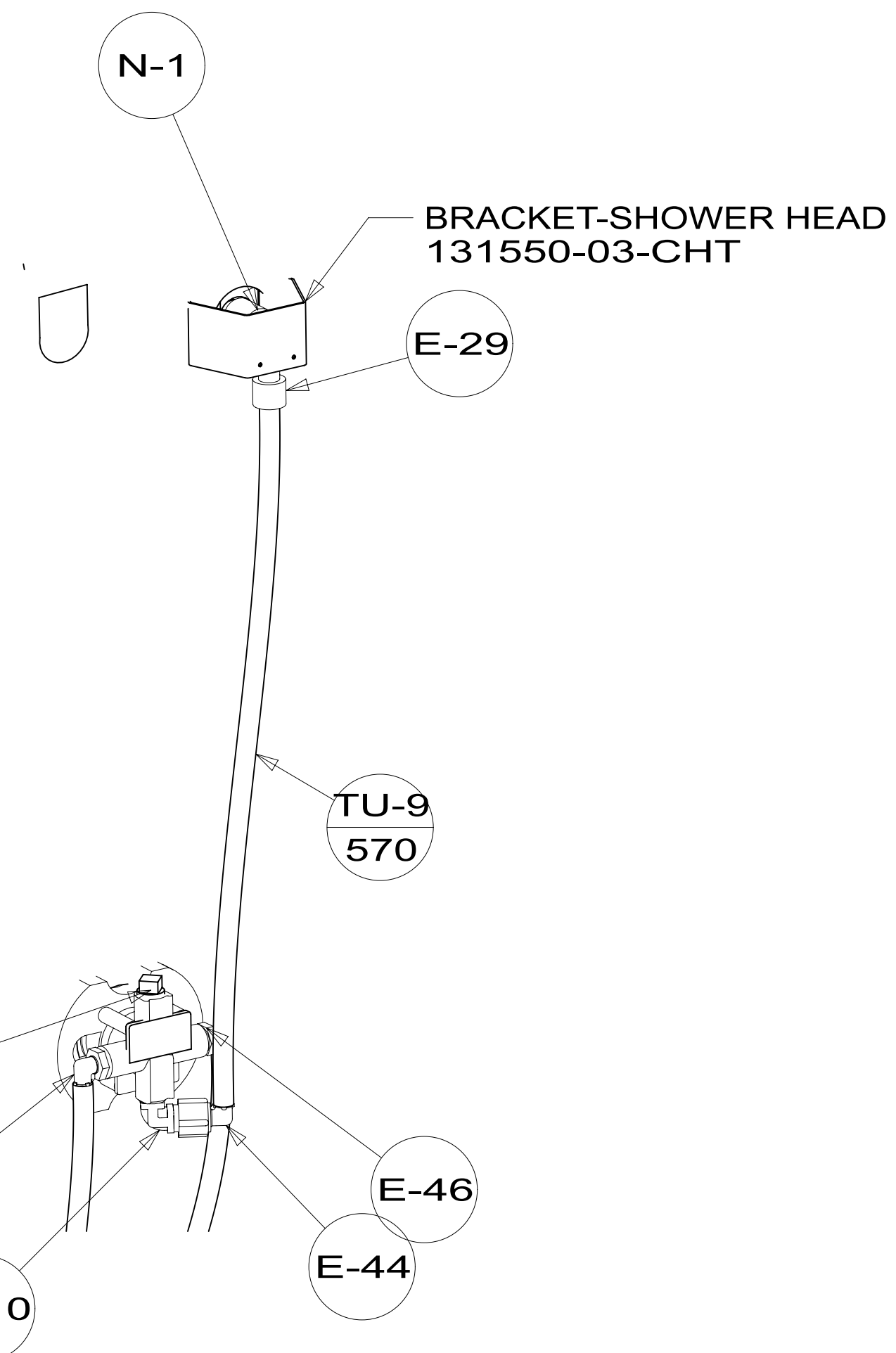
8 7 6 5 4 3 2 1



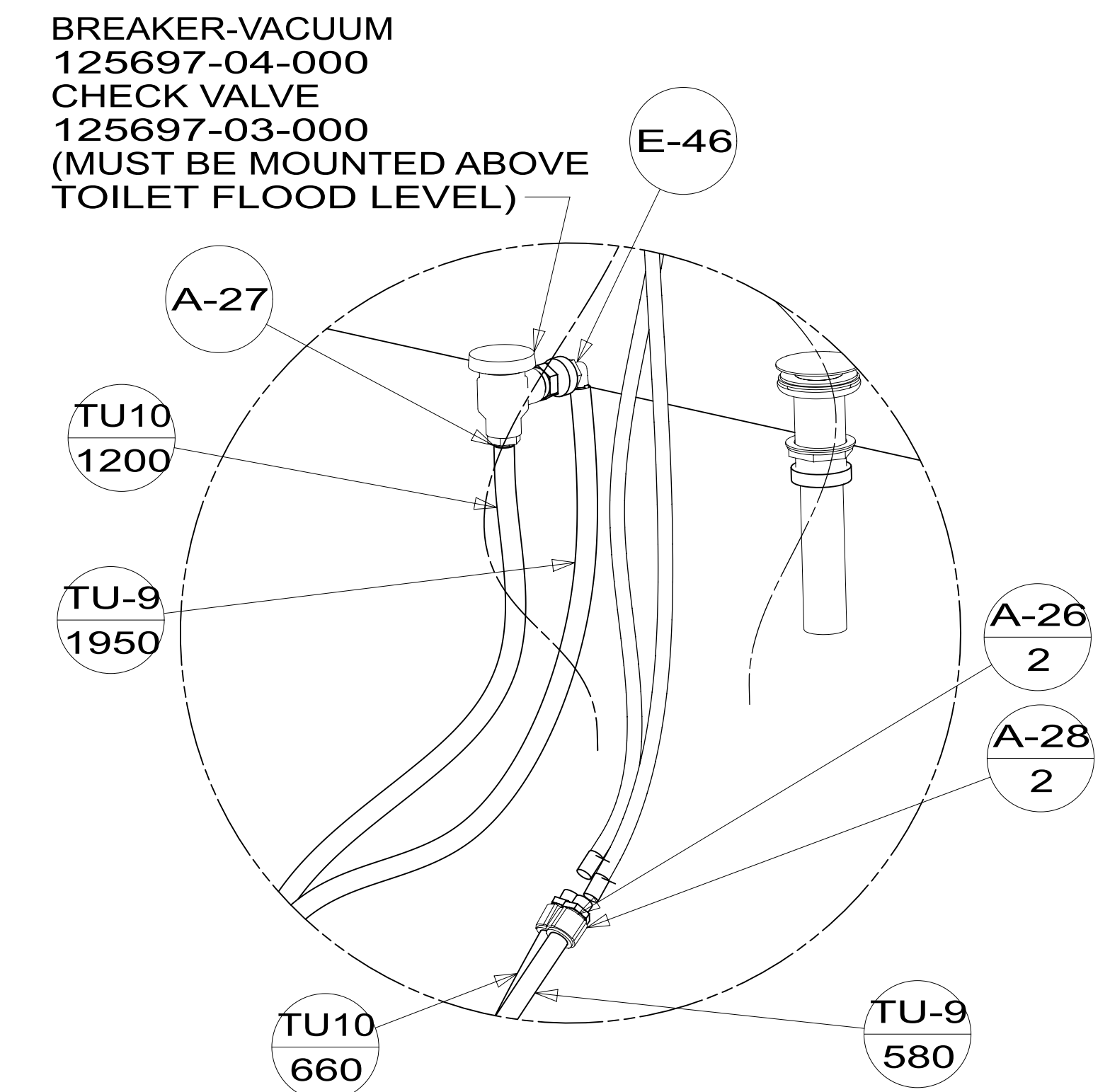
VIEW BA



SECTION BD-BD



VIEW BB (SHOWN W/OUT CABINETS)

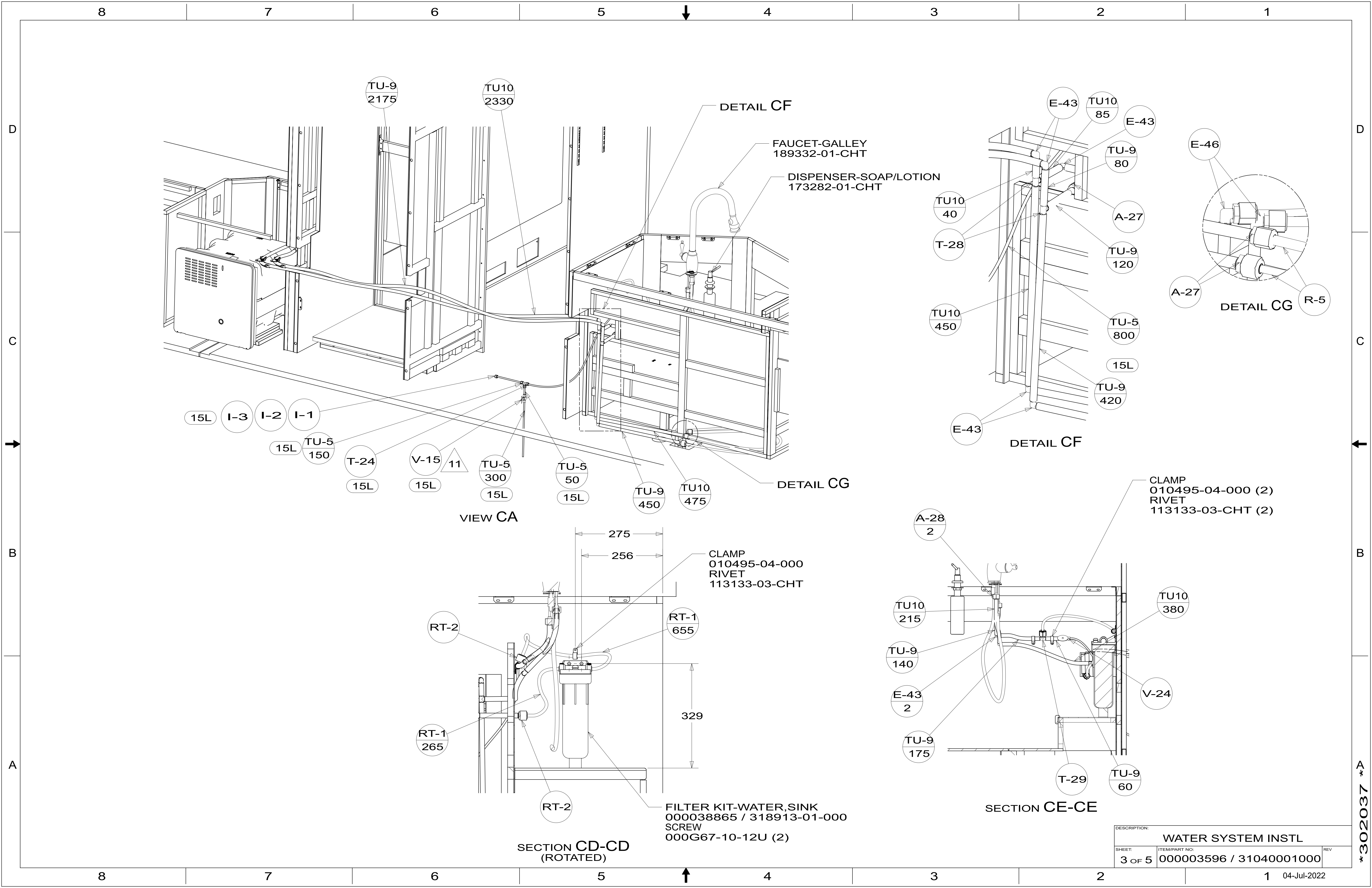


DETAIL BC (SHOWN W/OUT CABINETS)

DESCRIPTION:		
WATER SYSTEM INSTL		
SHEET:	ITEM/PART NO.:	REV
2 OF 5	000003596 / 31040001000	

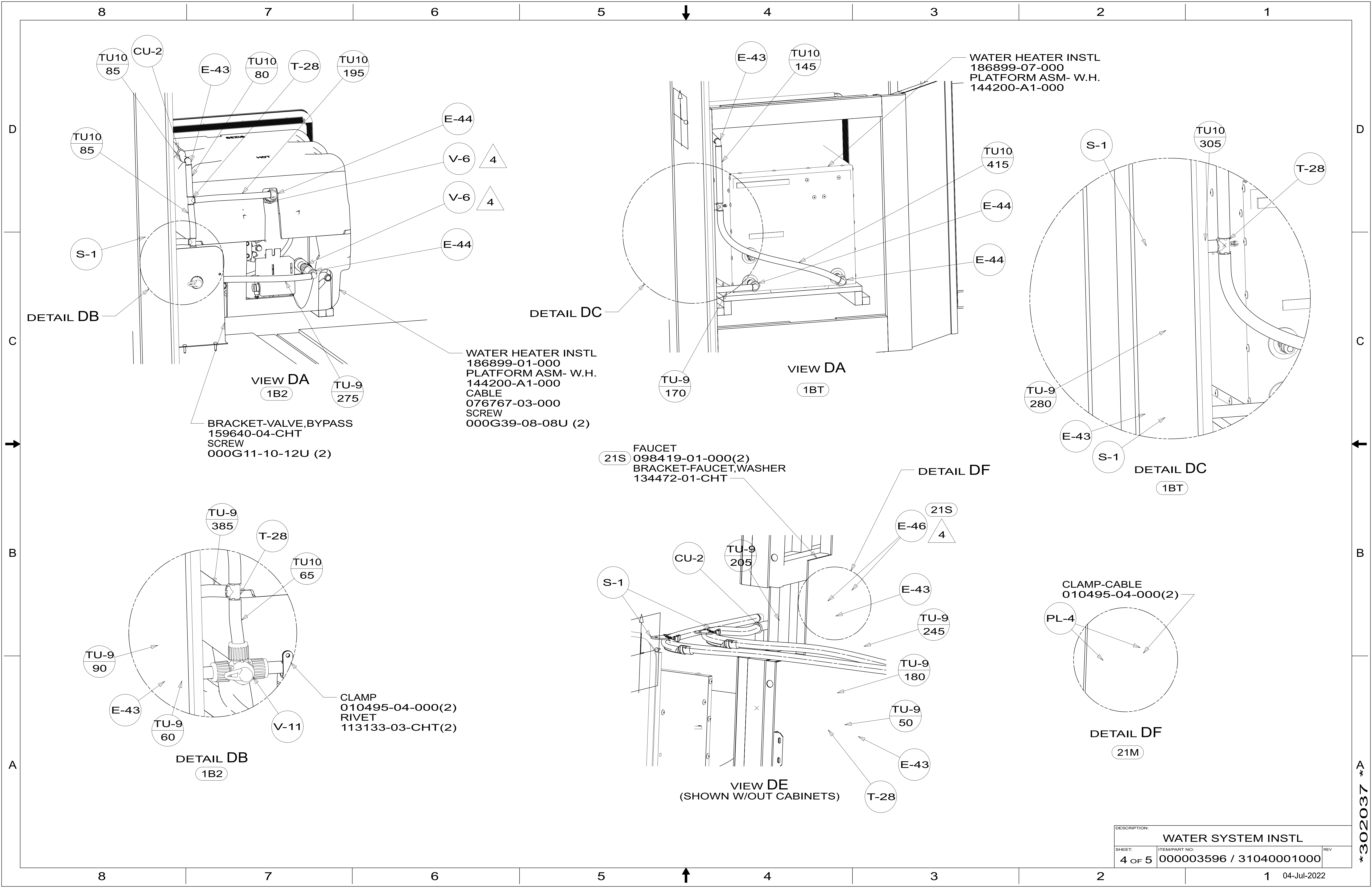
8 7 6 5 4 3 2 1 04-Jul-2022

302037



DESCRIPTION:		
WATER SYSTEM INSTL		
SHEET:	ITEM/PART NO.:	REV
3 OF 5	000003596 / 31040001000	

302037



DETAIL DB

VIEW DA
1B2

BRACKET-VALVE,BYPASS
159640-04-CHT
SCREW
000G11-10-12U (2)

WATER HEATER INSTL
186899-01-000
PLATFORM ASM- W.H.
144200-A1-000
CABLE
076767-03-000
SCREW
000G39-08-08U (2)

DETAIL DC

VIEW DA
1BT

WATER HEATER INSTL
186899-07-000
PLATFORM ASM- W.H.
144200-A1-000

DETAIL DC
1BT

21S FAUCET
098419-01-000(2)
BRACKET-FAUCET,WASHER
134472-01-CHT

DETAIL DF

DETAIL DB
1B2

CLAMP
010495-04-000(2)
RIVET
113133-03-CHT(2)

VIEW DE
(SHOWN W/OUT CABINETS)

CLAMP-CABLE
010495-04-000(2)

DETAIL DF
21M

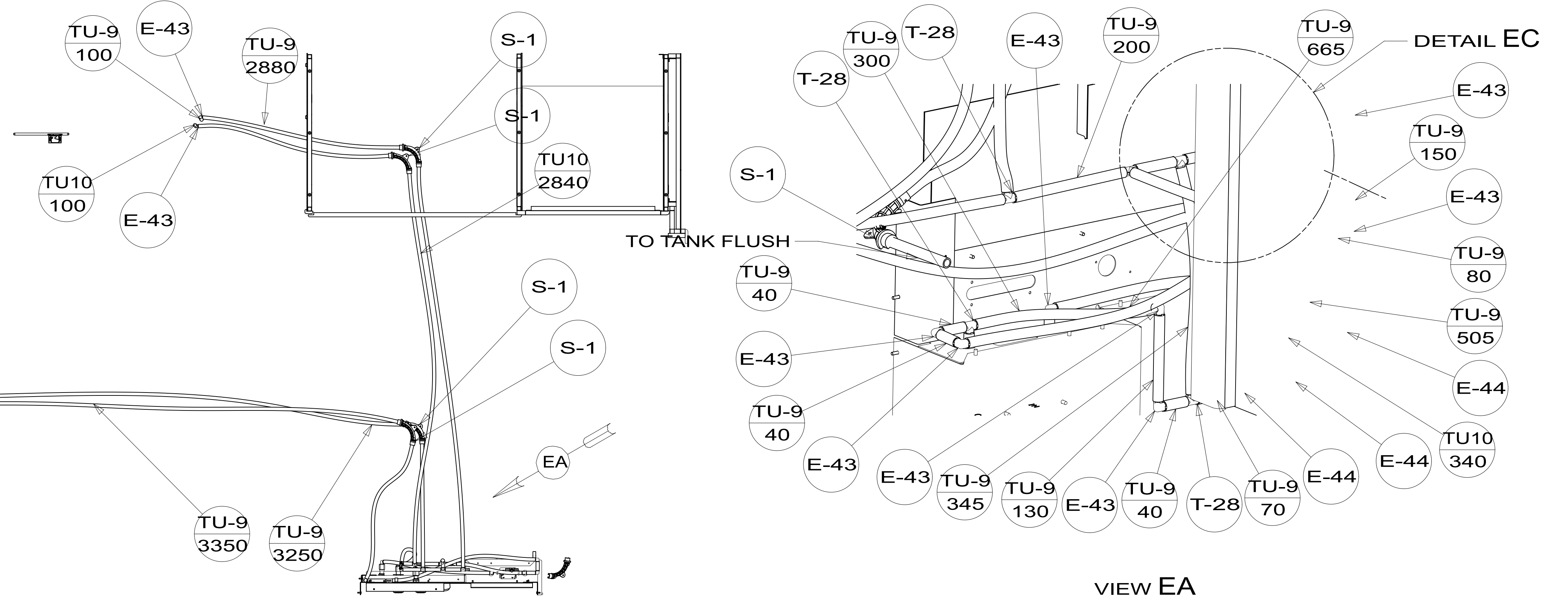
DESCRIPTION:		
WATER SYSTEM INSTL		
SHEET:	ITEM/PART NO.:	REV
4 OF 5	000003596 / 31040001000	

*302037

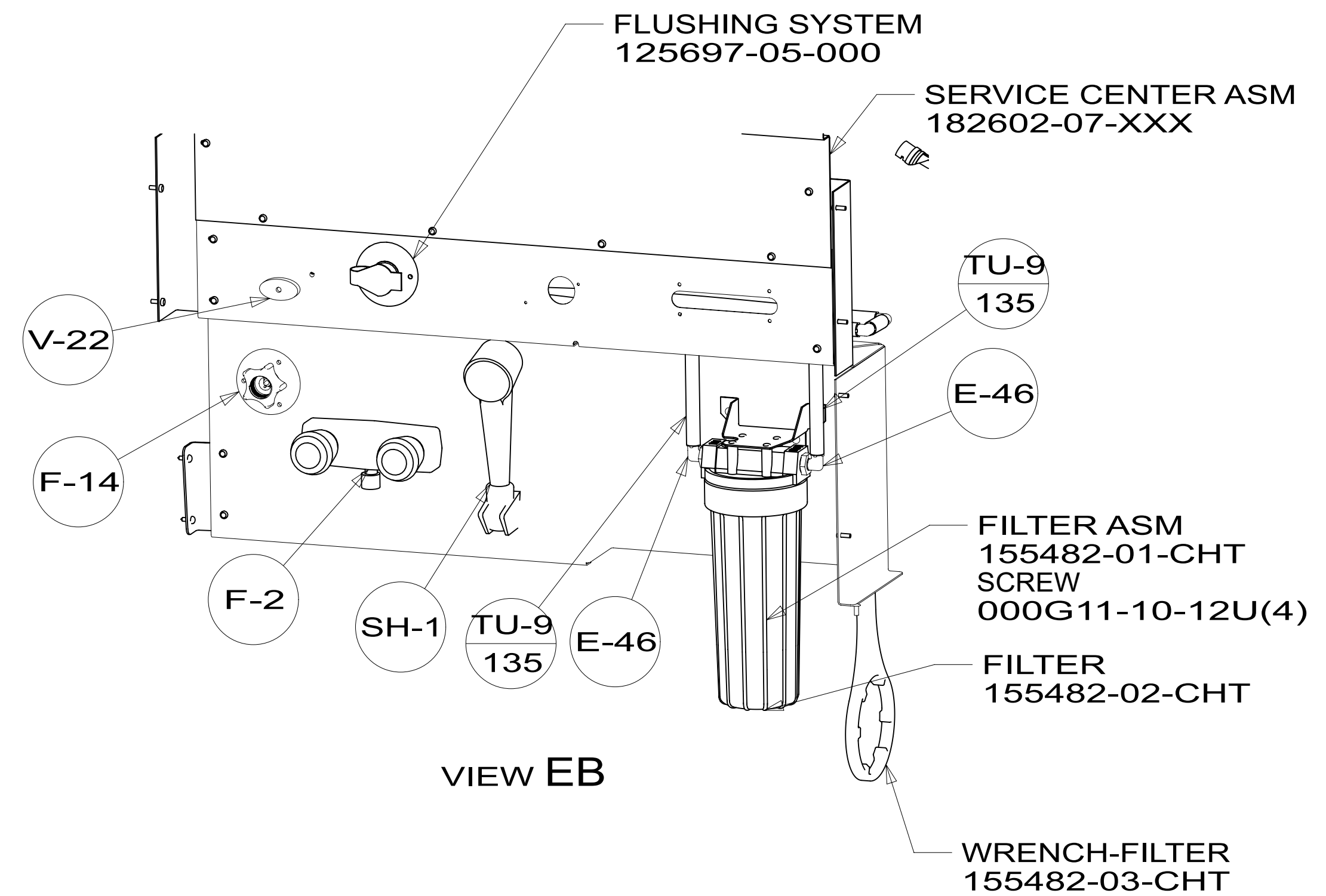
8 7 6 5 4 3 2 1

WATER PUMP CENTER ASM
182945-01-XXX

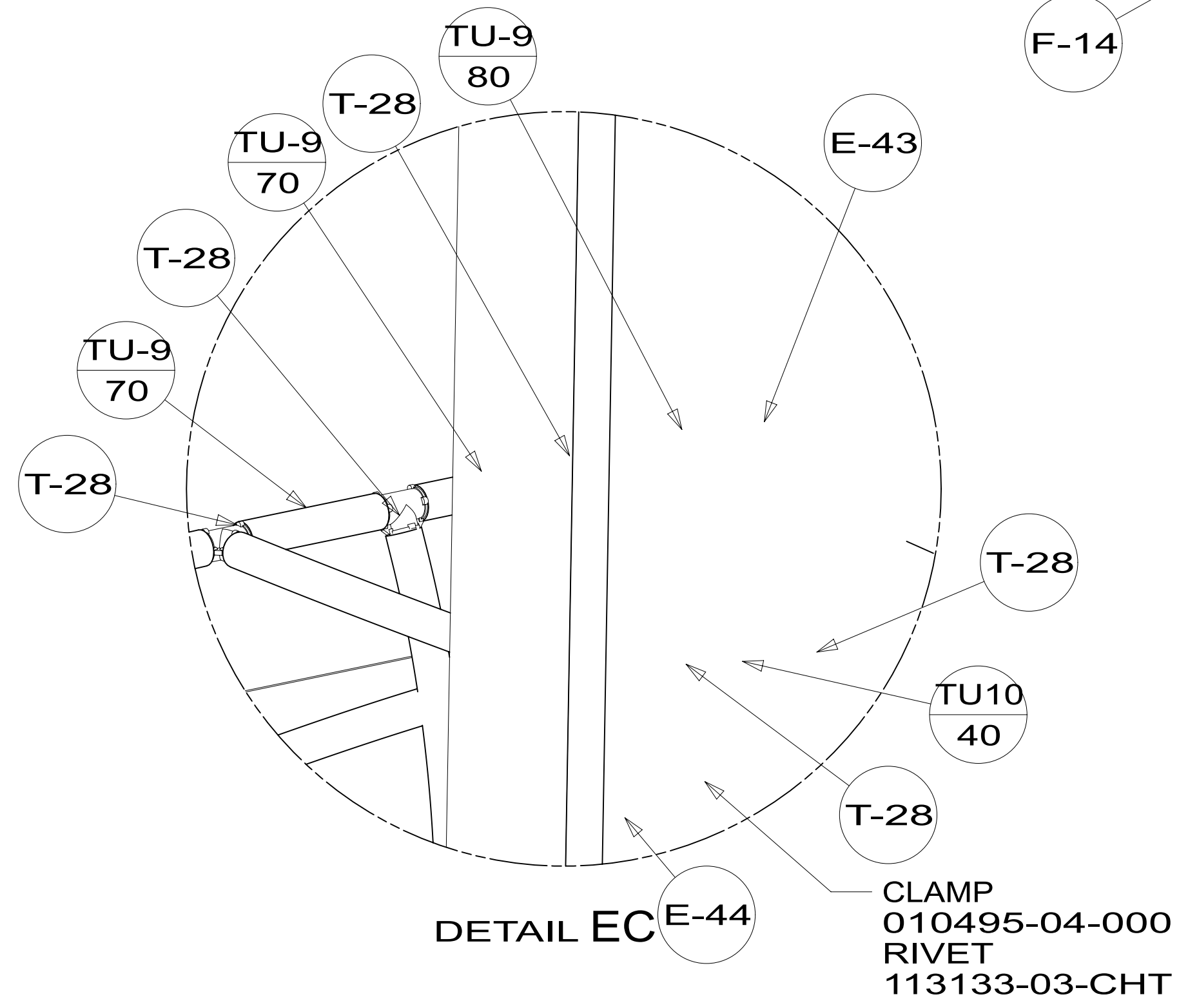
TOP VIEW SHOWING LINE UNDER FLOOR



VIEW EA



VIEW EB



DETAIL EC

DESCRIPTION:		
WATER SYSTEM INSTL		
SHEET:	ITEM/PART NO.:	REV:
5 OF 5	000003596 / 31040001000	

8 7 6 5 4 3 2 1 04-Jul-2022

302037