

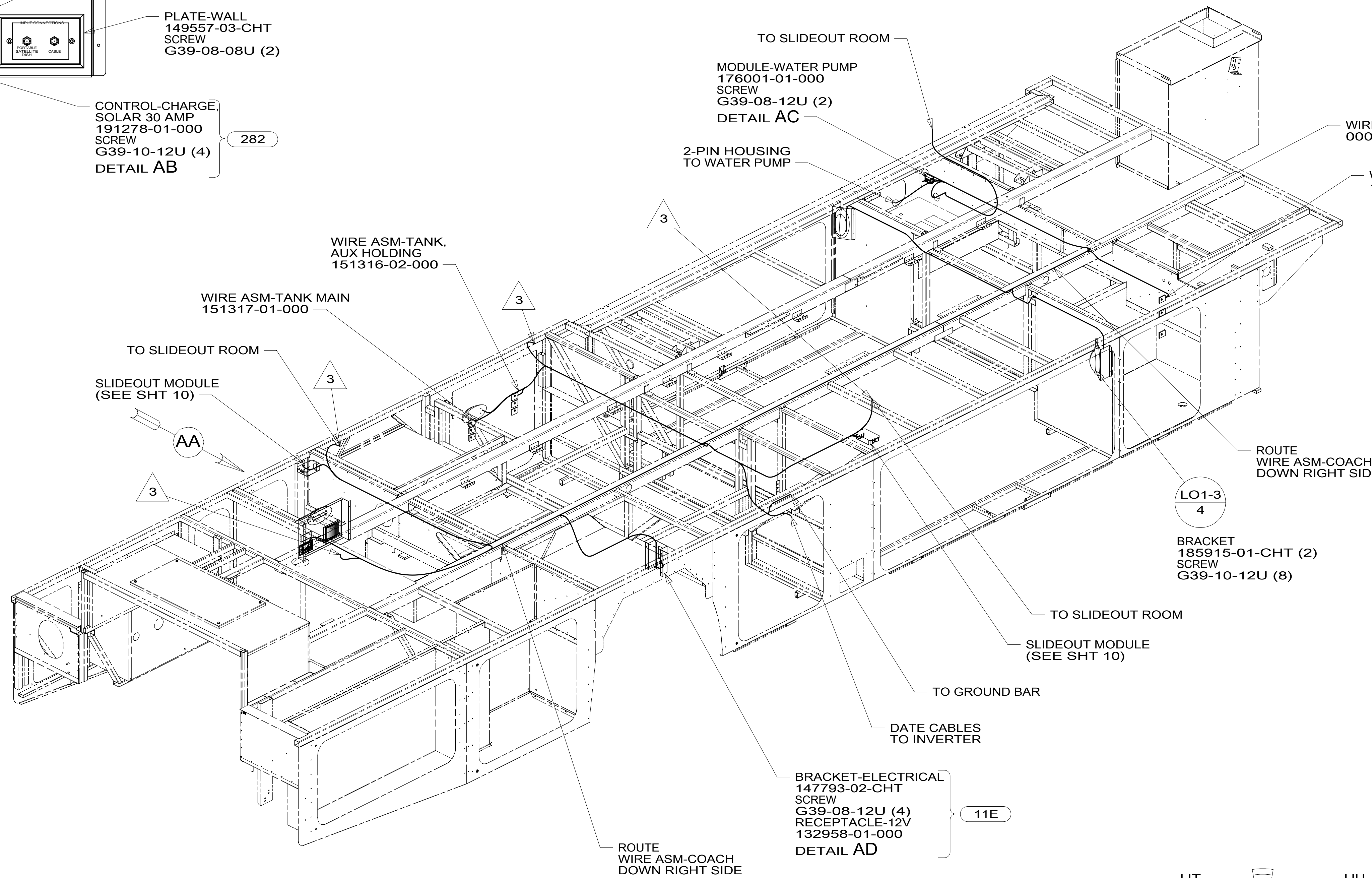
PANEL-LIGHT
132862-14-CHT (29W)
132862-15-CHT (282)
SCREW
G39-10-12U (4)

PORT-SOLAR, SINGLE
191558-01-000 (282)
SCREW
G39-10-16U (4)

PLATE-WALL
149557-03-CHT
SCREW
G39-08-08U (2)

CONTROL-CHARGE
SOLAR 30 AMP
191278-01-000 (282)
SCREW
G39-10-12U (4)
DETAIL AB

VIEW AA



TO SLIDEOUT ROOM
MODULE-WATER PUMP
176001-01-000
SCREW
G39-08-12U (2)
DETAIL AC

2-PIN HOUSING
TO WATER PUMP

WIRE ASM-COACH
000011758 / 311336-01-000

WIRE ASM-TANK, WATER
151317-01-000

WIRE ASM-TANK,
AUX HOLDING
151316-02-000

WIRE ASM-TANK MAIN
151317-01-000

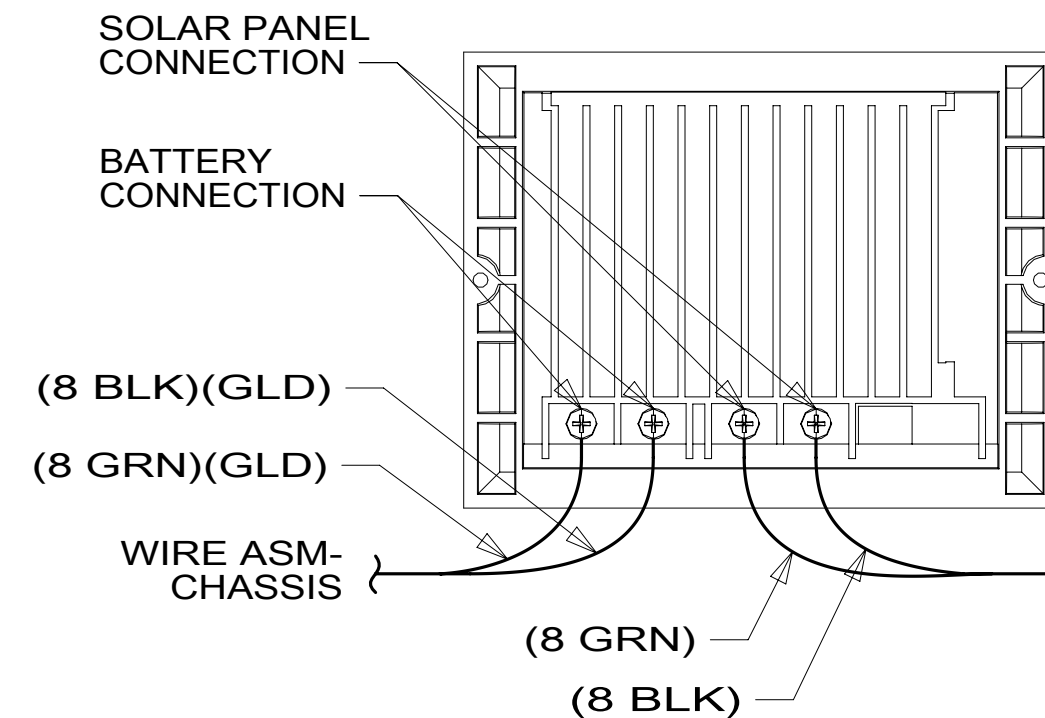
TO SLIDEOUT ROOM
SLIDEOUT MODULE
(SEE SHT 10)

AA

LO1-3
4

BRACKET
185915-01-CHT (2)
SCREW
G39-10-12U (8)

ROUTE WIRE ASM-COACH
DOWN RIGHT SIDE



SOLAR PANEL
CONNECTION
BATTERY
CONNECTION
(8 BLK)(GLD)
(8 GRN)(GLD)
WIRE ASM-
CHASSIS
(8 GRN)
(8 BLK)
WIRE ASM-
COACH

DETAIL AB 282

TO SLIDEOUT ROOM

SLIDEOUT MODULE
(SEE SHT 10)

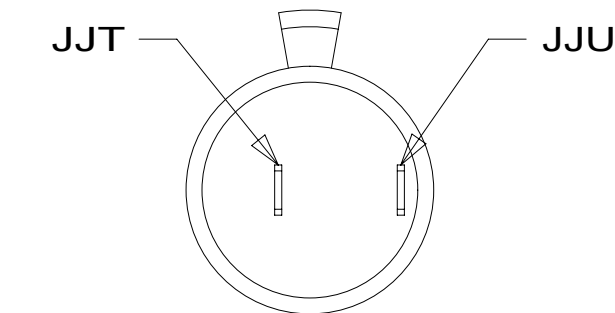
TO GROUND BAR

DATE CABLES
TO INVERTER

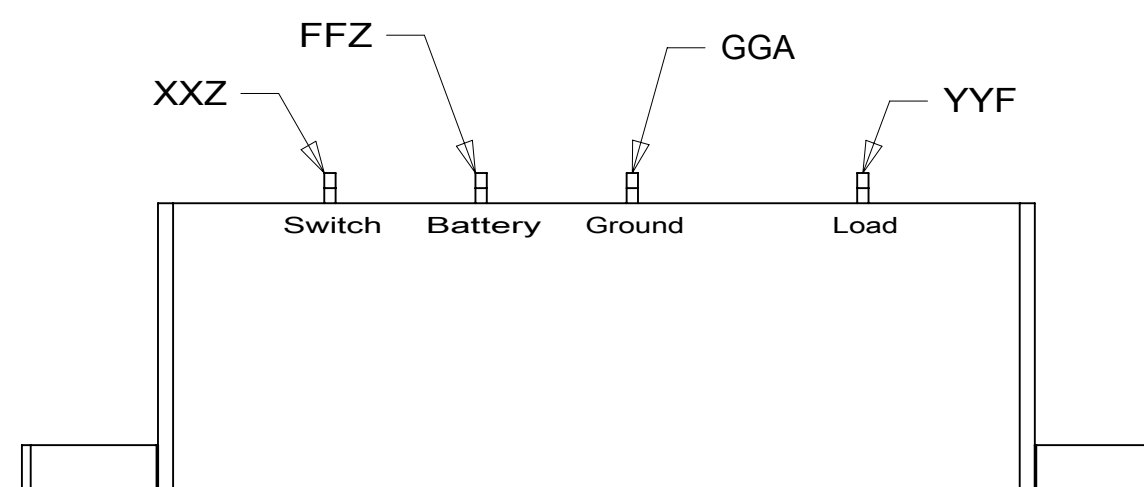
BRACKET-ELECTRICAL
147793-02-CHT
SCREW
G39-08-12U (4)
RECEPTACLE-12V
132958-01-000
DETAIL AD

11E

ROUTE WIRE ASM-COACH
DOWN RIGHT SIDE



DETAIL AD



DETAIL AC

3 WIRE PASSES THROUGH FLOOR IN THIS AREA.

2. ROUTE TANK SENSOR WIRES SO THEY DO NOT PASS OVER SENSORS. USE WIRE TIE MOUNT 155366-01-000 AND WIRE TIE 8343-01-000 AS NEEDED. TANK SURFACE MUST BE CLEANED USING ISOPROPYL ALCOHOL AND PRIMED WITH PRIMER 94.

1. AT MINIMUM ALL WIRES TO BE SUPPORTED AND SECURED PER CODE REQUIREMENTS. USE CLAMP 10495 OR 10497 OR WIRE TIE 8343 OR 108046 AND SCREW G67-XX-XXX OR G56-XX-XXX AS APPROPRIATE FOR INSTALLATION.

NOTES:

- 29W SOLAR PANEL/BATTERY CHRG W/O
- 282 SOLAR PANEL - 100 WATT
- 11E REFRIGERATOR/FREEZER PORTABL
- 265 CODES/STANDARDS-CSA/CMVSS
- 1B1 CODES/STANDARDS USA

1B1 265

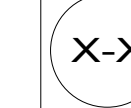


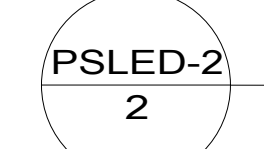
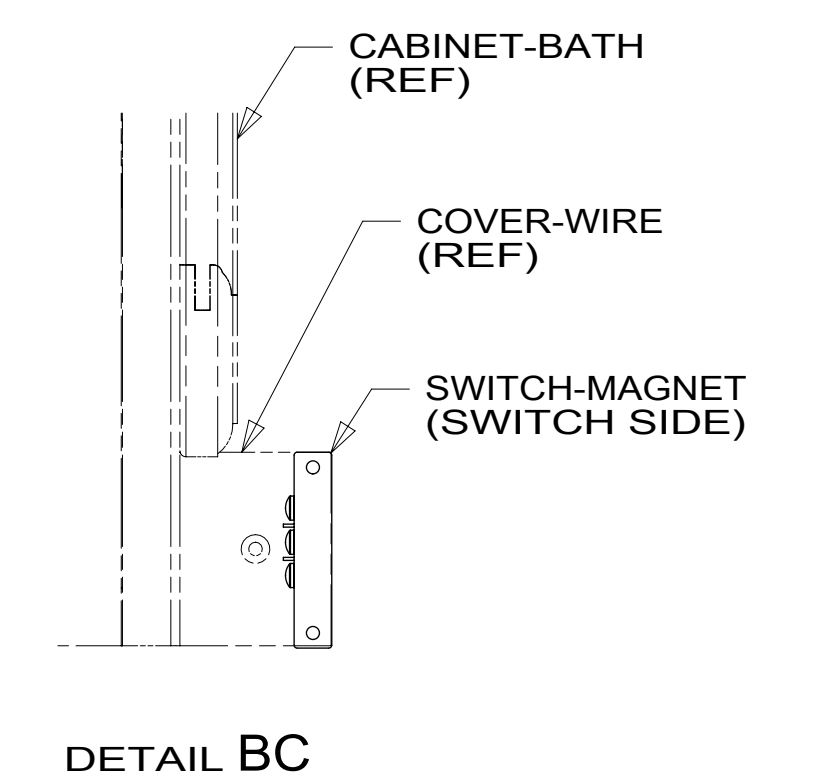
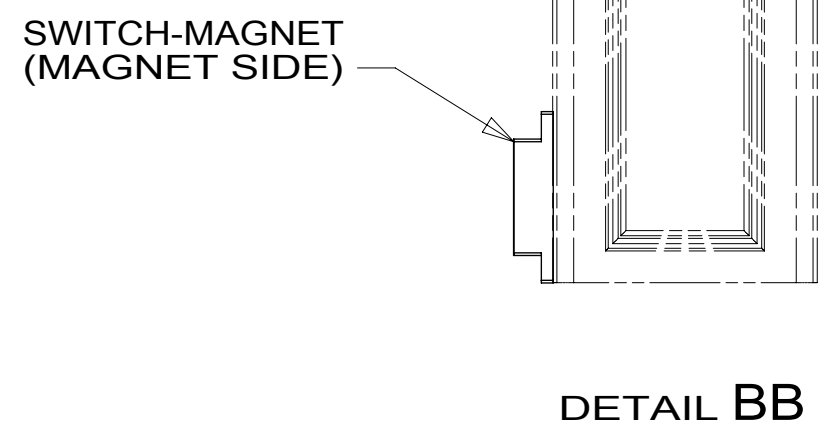
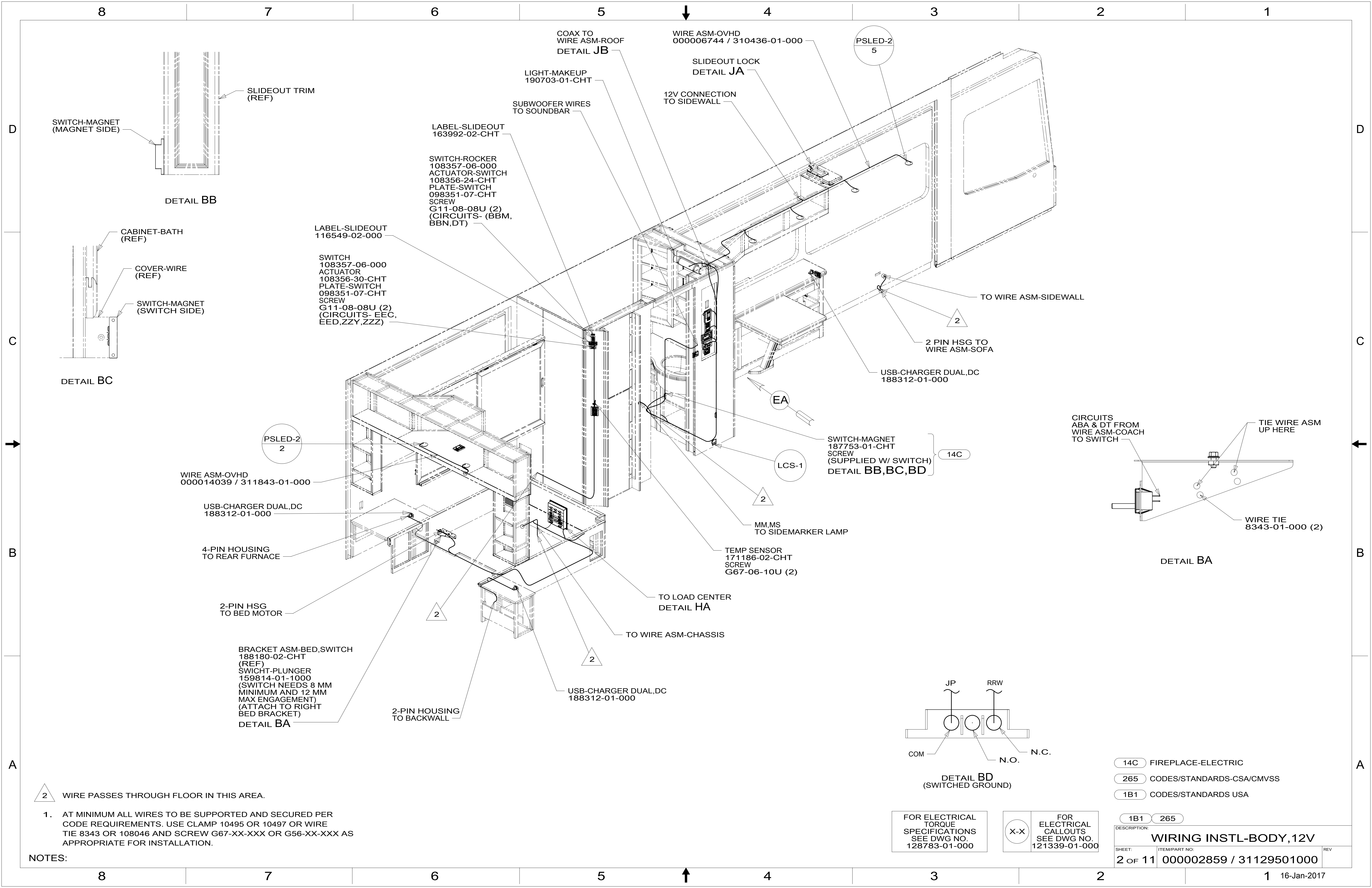
DSNR:	ALL DIMENSIONS ARE IN MILLIMETERS	
DFFR:	MATERIAL:	
UNSPECIFIED TOLERANCES:	WHOLE DIM (X) :	3
ONE-PLACE (X.X) :	TWO-PLACE (X.XX) :	0.50
ANGLE :		1°
REFER TO ES0018 FOR FASTENER TIGHTENING GUIDELINES	WEIGHT: (LBS)	FIRST USED:
		17 P36M

DESCRIPTION: WIRING INSTL-BODY, 12V		
SHEET: 1 OF 11	ITEM/PART NO: 000002859 / 31129501000	REV:

FOR ELECTRICAL TORQUE SPECIFICATIONS SEE DWG NO. 128783-01-000

FOR ELECTRICAL CALLOUTS SEE DWG NO. 121339-01-000





WIRE ASM-OVHD
000014039 / 311843-01-000

USB-CHARGER DUAL,DC
188312-01-000

4-PIN HOUSING
TO REAR FURNACE

2-PIN HSG
TO BED MOTOR

BRACKET ASM-BED,SWITCH
188180-02-CHT (REF)
SWICHT-PLUNGER
159814-01-1000
(SWITCH NEEDS 8 MM
MINIMUM AND 12 MM
MAX ENGAGEMENT)
(ATTACH TO RIGHT
BED BRACKET)
DETAIL BA

LABEL-SLIDEOUT
116549-02-000

SWITCH
108357-06-000
ACTUATOR
108356-30-CHT
PLATE-SWITCH
098351-07-CHT
SCREW
G11-08-08U (2)
(CIRCUITS- EEC,
EED,ZZY,ZZZ)

LABEL-SLIDEOUT
163992-02-CHT

SWITCH-ROCKER
108357-06-000
ACTUATOR-SWITCH
108356-24-CHT
PLATE-SWITCH
098351-07-CHT
SCREW
G11-08-08U (2)
(CIRCUITS- (BBM,
BBN,DT))

SUBWOOFER WIRES
TO SOUNDBAR

LIGHT-MAKEUP
190703-01-CHT

COAX TO
WIRE ASM-ROOF
DETAIL JB

SLIDEOUT LOCK
DETAIL JA

12V CONNECTION
TO SIDEWALL

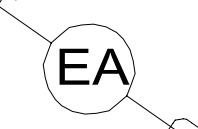
WIRE ASM-OVHD
000006744 / 310436-01-000



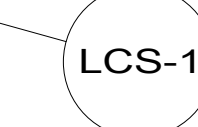
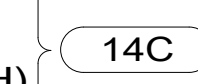
TO WIRE ASM-SIDEWALL

2 PIN HSG TO
WIRE ASM-SOFA

USB-CHARGER DUAL,DC
188312-01-000



SWITCH-MAGNET
187753-01-CHT
SCREW
(SUPPLIED W/ SWITCH)
DETAIL BB,BC,BD



MM,MS
TO SIDEMARKER LAMP

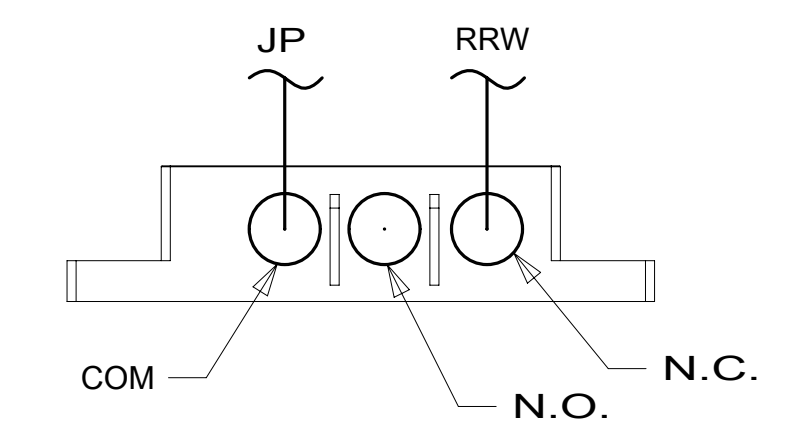
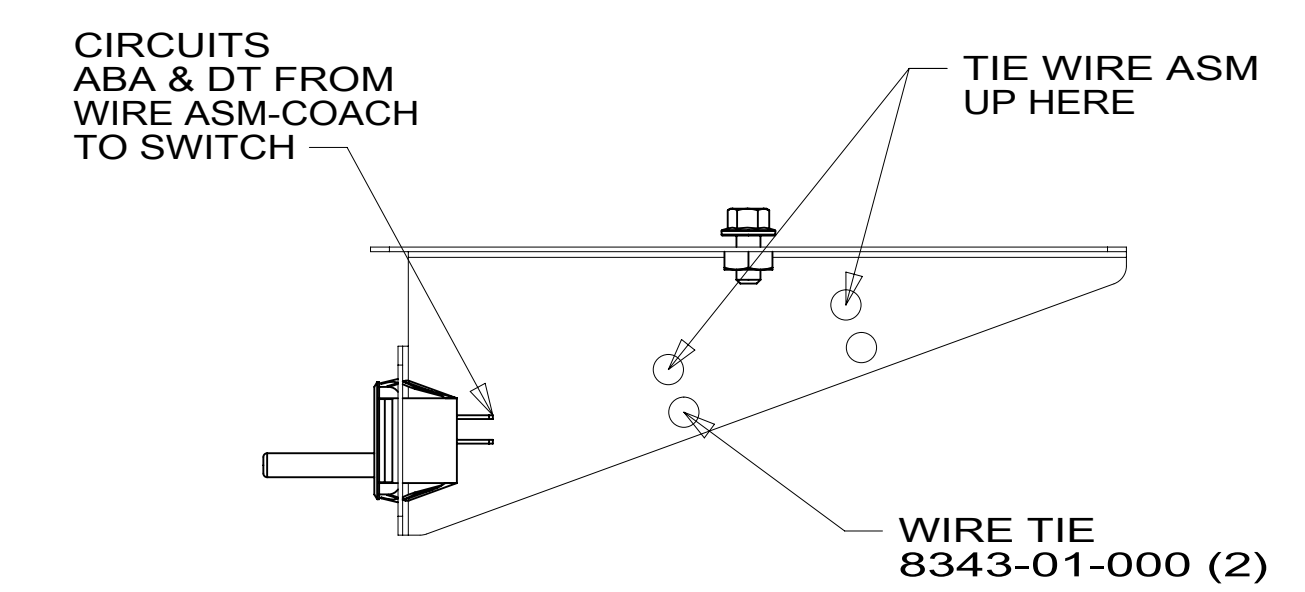
TEMP SENSOR
171186-02-CHT
SCREW
G67-06-10U (2)

TO LOAD CENTER
DETAIL HA

TO WIRE ASM-CHASSIS

USB-CHARGER DUAL,DC
188312-01-000

2-PIN HOUSING
TO BACKWALL



14C FIREPLACE-ELECTRIC

265 CODES/STANDARDS-CSA/CMVSS

1B1 CODES/STANDARDS USA

1B1 265

DESCRIPTION:
WIRING INSTL-BODY, 12V

SHEET: 2 of 11 ITEM/PART NO: 00002859 / 31129501000 REV

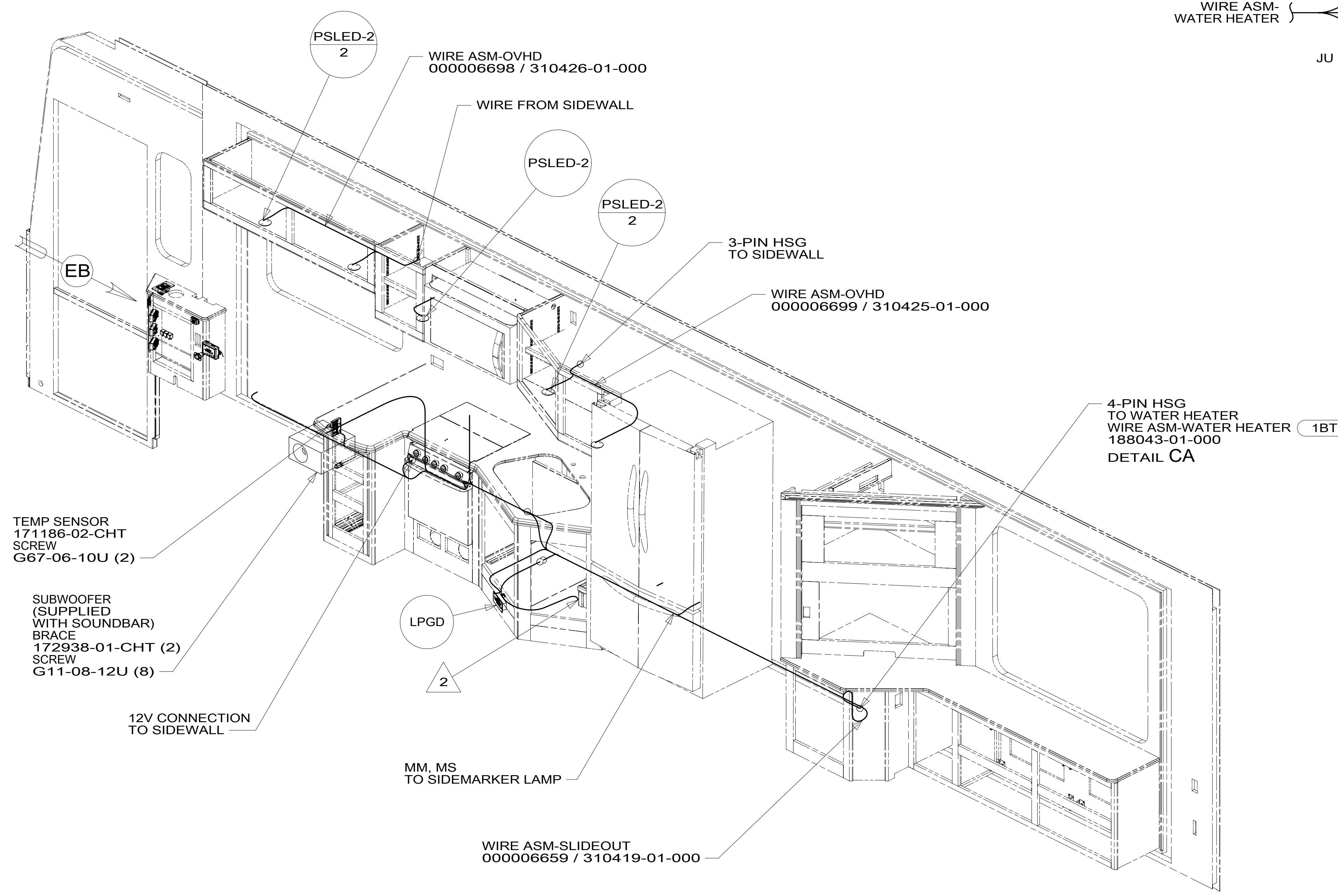
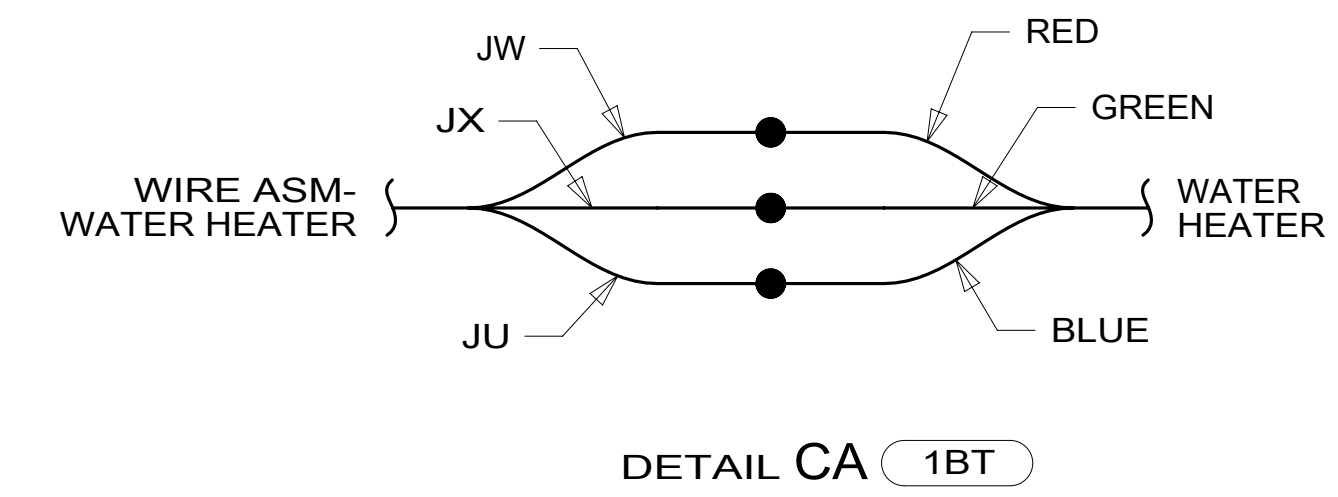
2 WIRE PASSES THROUGH FLOOR IN THIS AREA.

1. AT MINIMUM ALL WIRES TO BE SUPPORTED AND SECURED PER CODE REQUIREMENTS. USE CLAMP 10495 OR 10497 OR WIRE TIE 8343 OR 108046 AND SCREW G67-XX-XXX OR G56-XX-XXX AS APPROPRIATE FOR INSTALLATION.

NOTES:

FOR ELECTRICAL
TORQUE
SPECIFICATIONS
SEE DWG NO.
128783-01-000

FOR
ELECTRICAL
CALLOUTS
SEE DWG NO.
121339-01-000



TEMP SENSOR
171186-02-CHT
SCREW
G67-06-10U (2)

SUBWOOFER
(SUPPLIED
WITH SOUNDBAR)
BRACE
172938-01-CHT (2)
SCREW
G11-08-12U (8)

12V CONNECTION
TO SIDEWALL

LPGD
2

MM. MS
TO SIDEMARKER LAMP

WIRE ASM-SLIDEOUT
000006659 / 310419-01-000

PSLED-2
2
WIRE ASM-OVHD
000006698 / 310426-01-000

WIRE FROM SIDEWALL

PSLED-2

PSLED-2
2

3-PIN HSG
TO SIDEWALL

WIRE ASM-OVHD
000006699 / 310425-01-000

4-PIN HSG
TO WATER HEATER
WIRE ASM-WATER HEATER
188043-01-000
DETAIL CA 1BT

2 WIRE PASSES THROUGH FLOOR IN THIS AREA.

- NOTES:
1. AT MINIMUM ALL WIRES TO BE SUPPORTED AND SECURED PER CODE REQUIREMENTS. USE CLAMP 10495 OR 10497 OR WIRE TIE 8343 OR 108046 AND SCREW G67-XX-XXX OR G56-XX-XXX AS APPROPRIATE FOR INSTALLATION.

FOR ELECTRICAL
TORQUE
SPECIFICATIONS
SEE DWG NO.
128783-01-000

FOR
ELECTRICAL
CALLOUTS
SEE DWG NO.
121339-01-000

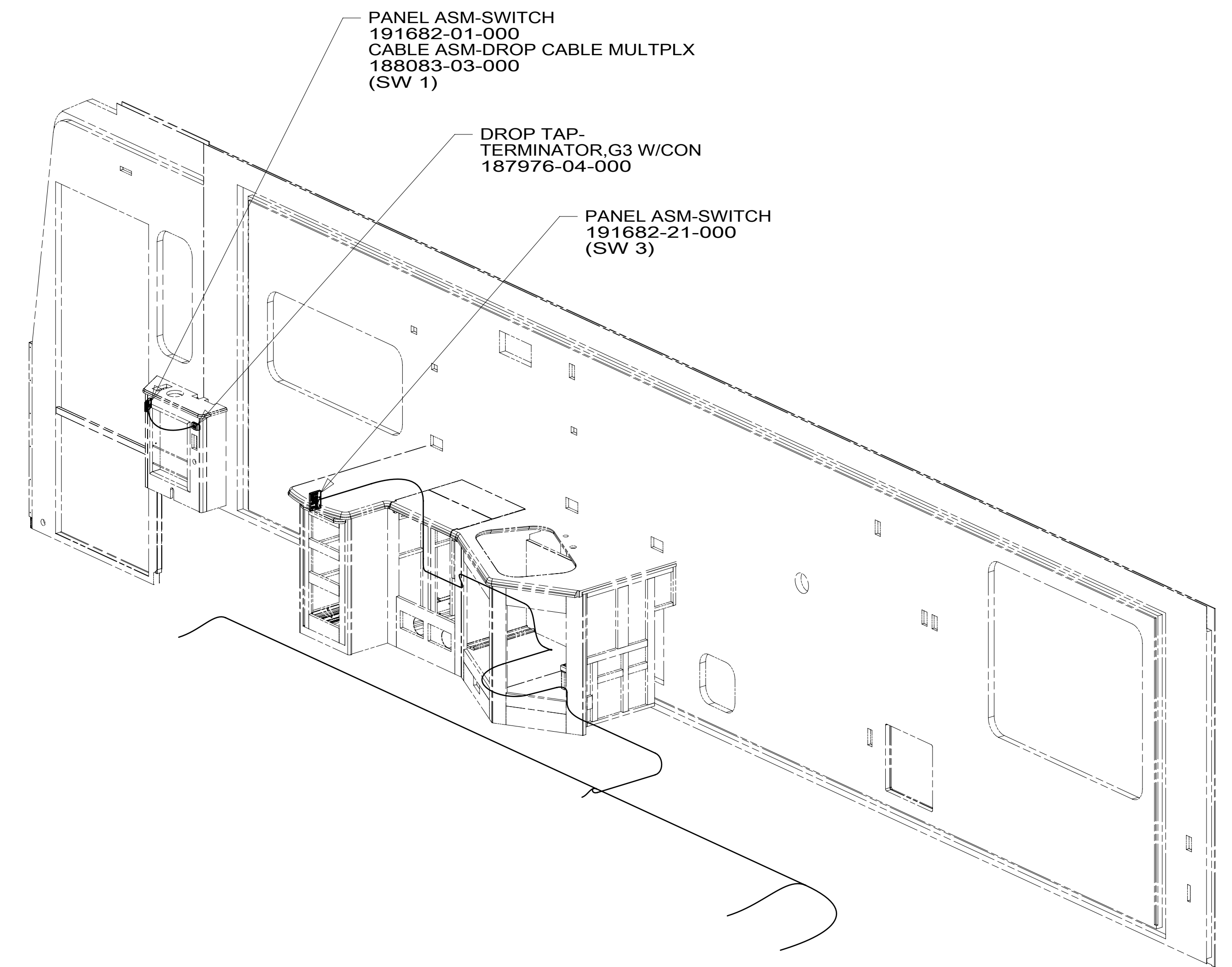
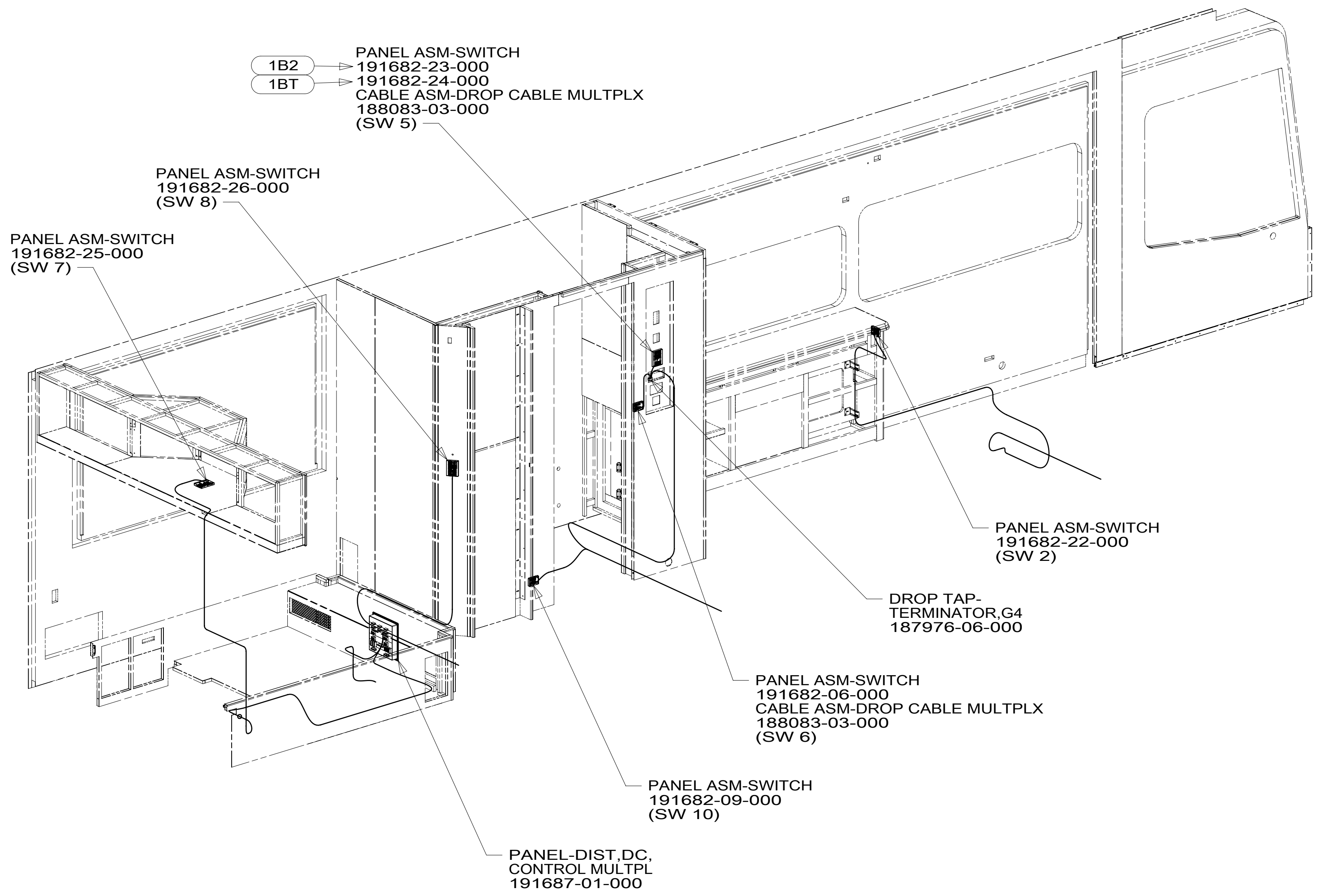
- 1BT WATER HEATER, TANKLESS
- 265 CODES/STANDARDS-CSA/CMVSS
- 1B1 CODES/STANDARDS USA

DESCRIPTION:		1B1 265
WIRING INSTL-BODY, 12V		
SHEET:	ITEM/PART NO.:	REV
3 OF 11	000002859 / 31129501000	

8 7 6 5 4 3 2 1

D
C
B
A

D
C
B
A



FOR ELECTRICAL
TORQUE
SPECIFICATIONS
SEE DWG NO.
128783-01-000

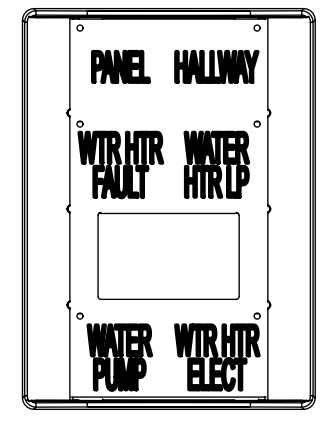
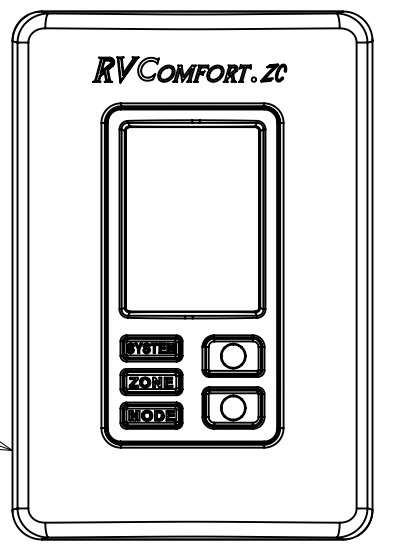
FOR ELECTRICAL
CALLOUTS
SEE DWG NO.
121339-01-000

- 1B2 WTR HTR-10GAL/ELEC/LP/MTRAIID
- 1BT WATER HEATER, TANKLESS
- 265 CODES/STANDARDS-CSA/CMVSS
- 1B1 CODES/STANDARDS USA

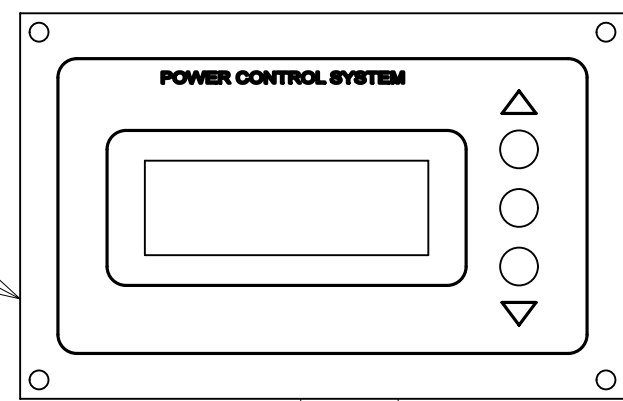
DESCRIPTION:		1B1 265
WIRING INSTL-BODY, 12V		
SHEET:	ITEM/PART NO.:	REV
4 OF 11	000002859 / 31129501000	

8 7 6 5 4 3 2 1 16-Jan-2017

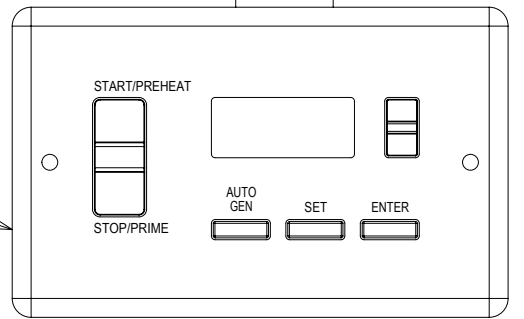
THERMOSTAT-ZONE,
AC & 2S HEAT REFRESH
171186-05-CHT
SCREW
G11-08-08U (2)
RELAY
63912-02-000 (2)



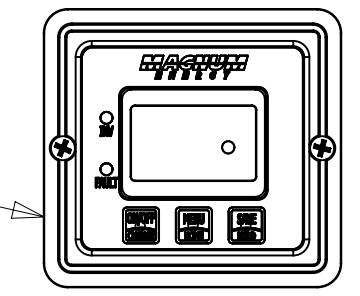
PANEL-MONITOR,
PCS 50 AMP
174384-06-000
SCREW
G11-08-08U (4)



2
MODULE-AUTO
GENERATOR START
158425-01-000
SCREW
G11-08-08U (2)



1
REMOTE PANEL
175385-02-000
SCREW
G11-08-08U (2)



DETAIL EA

2
SET 'GEN TYPE' TO 'QD 6-8'
SET 'SAFE TYPE' TO 'IGNITION'
SET 'SP SENSE' TO 'AFTER'
SEE OWNERS MANUAL FOR SETUP PROCEDURE.

1
SET 'BAT TYPE' TO 'AGM2'
SET 'BAT AHRS' TO '600 AH'
SET 'LBCO' TO '11VDC'
SEE OWNERS MANUAL FOR SETUP PROCEDURE.

NOTES:

SWITCH-ENTRY DOOR LOCK
174757-02-CHT
(CIRCUITS PY,MK,PX,MC,ML)

PLATE-SWITCH
176859-10-CHT
SCREW
G67-10-12U (4)

PANEL-SWITCH
MOUNTING,SINGLE
174834-01-CHT (2)

SWITCH-STEP COVER
174757-08-CHT
(CIRCUITS GX,HHC,
KA,KA,HHD,GX,MC,ML)

KEYLESS ENTRY MODULE
176367-04-000
SCREW
G11-08-08U (2)

PLATE-SWITCH
191990-01-CHT
SCREW
G67-10-12U (6)

SWITCH-AWNING POWER
174757-19-CHT
(CIRCUITS FFD,FFT,MC,FFT,ML)

SWITCH-DOOR AWNING
174757-09-CHT
(CIRCUITS FFS,FFF,FFE,
FFE,FFG,FFT,MC,ML)

SWITCH-BLANK
145754-01-CHT

SWITCH-CHASS BATT DISC
174757-06-CHT
(CIRCUITS UUC,TTY,
UUB,TTZ,UUC,MK)
WIRE ASM-THERMISTOR
186796-01-000

PANEL-SWITCH
MOUNTING,3-WAY
174834-02-CHT (3)

SWITCH-ENTRY STEP
174757-27-CHT
(CIRCUITS ES,ER,MC,ML)

USB-CHARGER
188312-01-000

SWITCH-PATIO AWNING
174757-03-CHT
(CIRCUITS FFN,FFP,FFR,MC,ML)

RELAY-LIGHTING/AWNING
063912-02-000 (2)

SWITCH-BLANK
145754-01-CHT

SWITCH-AWNING LIGHT
174757-38-CHT
(CIRCUITS ZZK,JF,MC,WC)

SWITCH-COACH BATT DISC
174757-07-CHT
(CIRCUITS KF,LG,LJ,LH,KF,WC)
WIRE ASM-THERMISTOR
186796-01-000

DETAIL EB

265 CODES/STANDARDS-CSA/CMVSS

1B1 CODES/STANDARDS USA

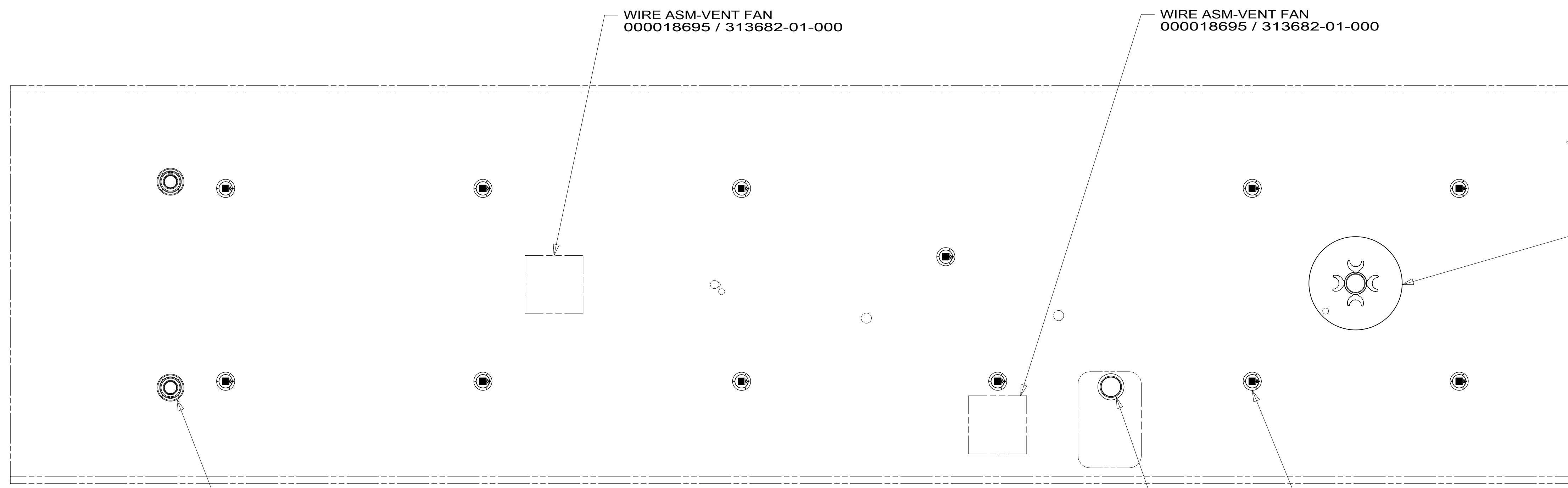
1B1 265

FOR ELECTRICAL
TORQUE
SPECIFICATIONS
SEE DWG NO.
128783-01-000

FOR ELECTRICAL
CALLOUTS
SEE DWG NO.
121339-01-000

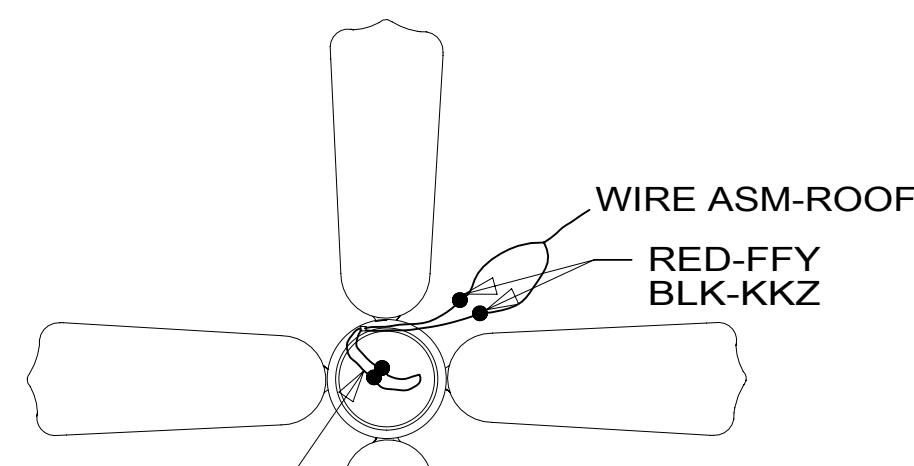
DESCRIPTION:
WIRING INSTL-BODY, 12V

SHEET: 5 of 11 ITEM/PART NO: 000002859 / 31129501000 REV



SPEAKER
180783-01-CHT (2) } 571
SCREW
G11-08-20U (8)
SPEAKER
193631-01-000 (2) } 57P
SCREW
G11-08-20U (8)

FAN
188368-01-CHT
SCREW
G11-10-16U (3)
CONNECTOR
58028-01-000 (2)
DETAIL FA



DETAIL FA

- 571 RADIO SPEAKERS
- 57P RADIO SPEAKERS-PREMIUM SOUND
- 41Y FAN - CEILING,BEDROOM
- 265 CODES/STANDARDS-CSA/CMVSS
- 1B1 CODES/STANDARDS USA

2 APPLY LOCTITE P/N 62917-06-000 TO FAN BLADE MOUNTING NUT THREADS.
1 CENTER FAN OVER 25MM HOLE IN ROOF.

FOR ELECTRICAL TORQUE SPECIFICATIONS SEE DWG NO. 128783-01-000

FOR ELECTRICAL CALLOUTS SEE DWG NO. 121339-01-000

DESCRIPTION:	1B1 265	
WIRING INSTL-BODY, 12V		
SHEET:	ITEM/PART NO:	REV
6 of 11	000002859 / 31129501000	

8

7

6

5

4

3

2

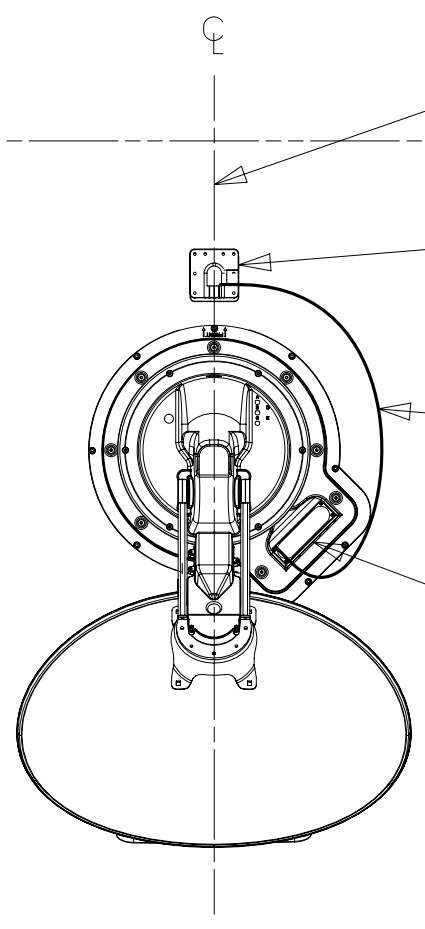
1

THE SATELLITE DISH AND WIRE CONNECTIONS ARE TO BE PLACED ON THE CENTERLINE OF THE MOTORHOME FACING FORWARD.

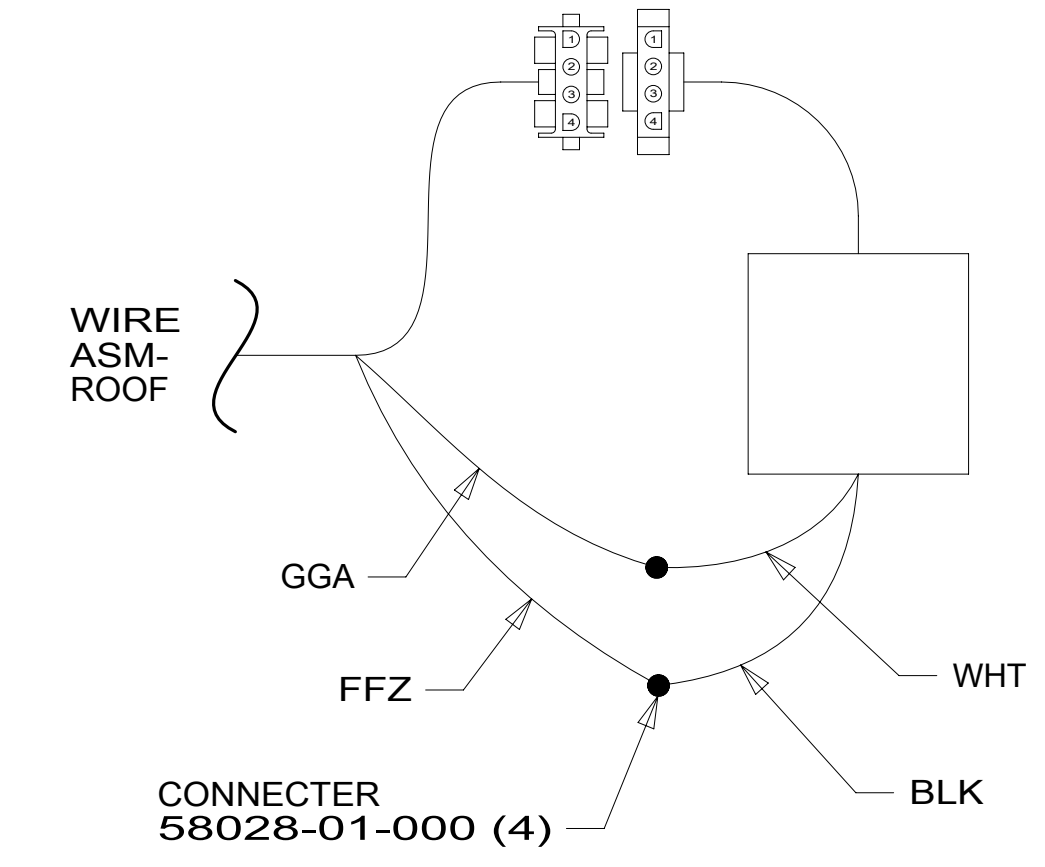
SEPARATE CABLES AND INSTALL WIRE COVER OVER HOLE IN ROOF ASM WITH CABLES EXITING ON PASSENGERS SIDE.

WHEN APPLYING ROOF SEALANT TO SATELLITE DISH, PLACE ROOF SEALANT HERE (APPROXIMATELY 75MM WIDE) AND PUSH THE CABLES INTO THE SEALANT TO STABILIZE THEM.

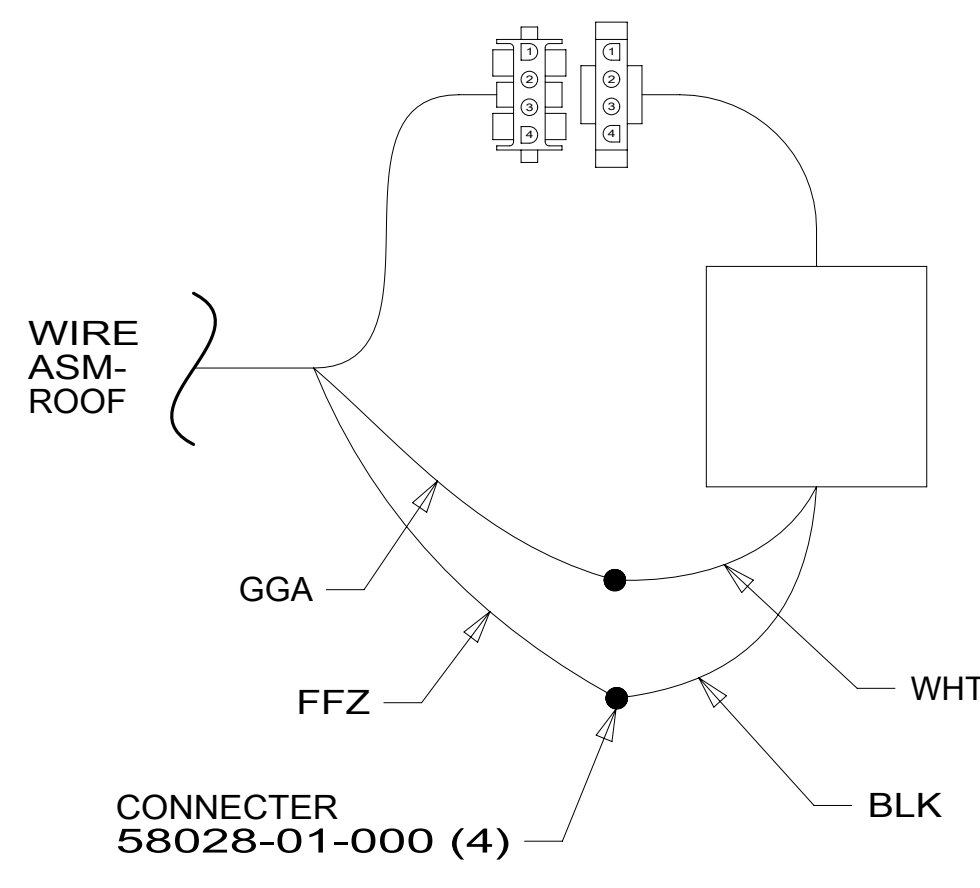
CONNECT CABLE ASM-COAX FROM ROOF ASM TO COAX CABLES ON SATELLITE DISH AND CONNECT 10' CABLE-DATA FROM ROOF ASM TO DATA CABLE FROM SATELLITE DISH AND PLACE ALL CONNECTIONS BACK INTO ROOF ASM.



DETAIL GB



DETAIL GC



DETAIL GD

- 196 {
 - 1 ANTENNA-TV,AUTOMATIC 194155-01-CHT
 - PLATE-ROOF,CABLE ENTRY 146488-01-000
 - SCREW G67-10-12U (10)
 - CABLE ASM-COAX 087105-01-009
 - ADAPTER 082134-01-000

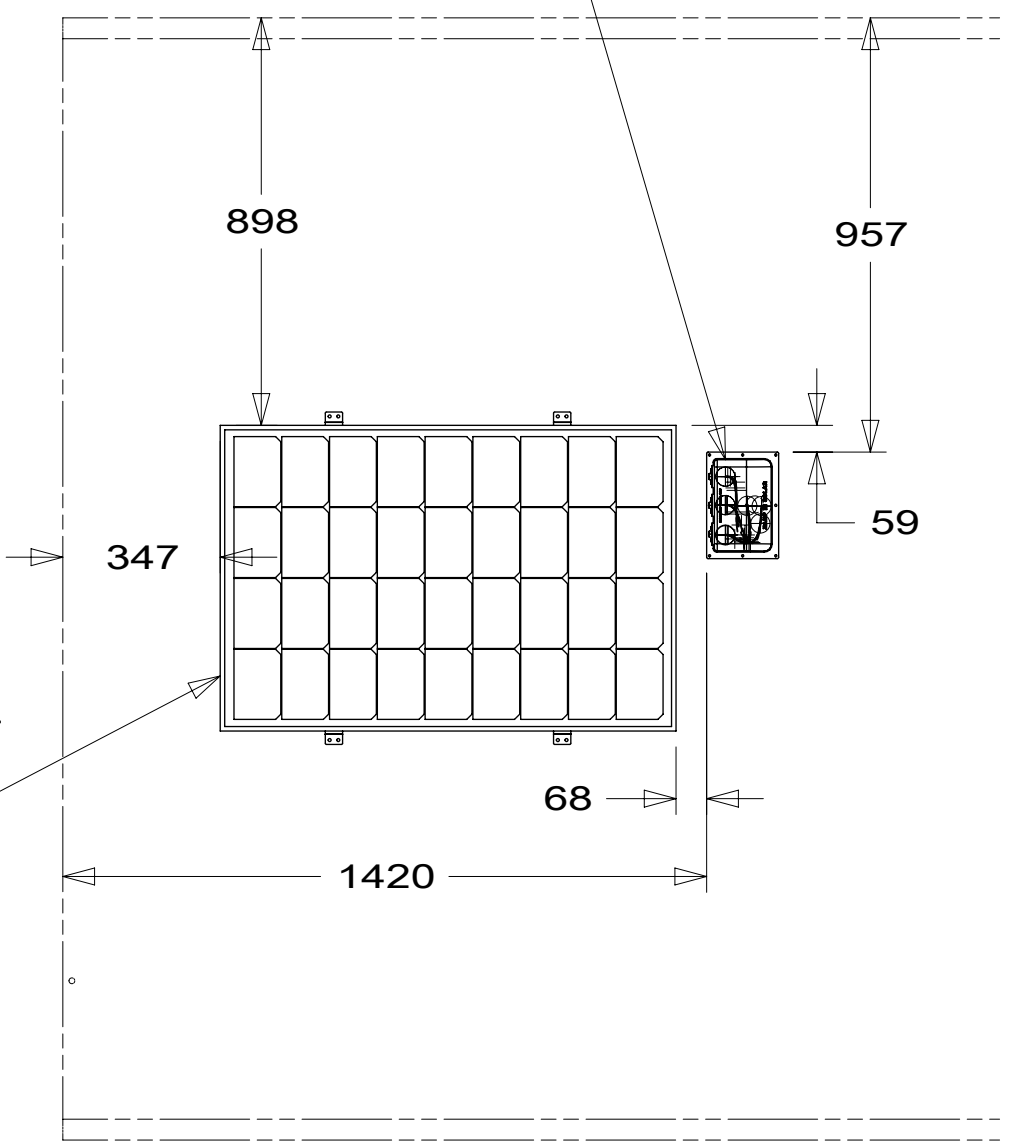
WIRING DETAIL GC

WIRING DETAIL GD

- 193 {
 - 1 ANTENNA-TV ROOF 000039180 / 318992-01-CHT
 - EXTENSION-CONNECTOR 179004-06-000
 - SCREW 000G67-10-12U (6)

- 282 {
 - 1 PANEL-SOLAR 100 WATT 191276-01-CHT
 - MOUNTING FEET-SOLAR, QTY 4 000031418 / 316962-01-000
 - SCREW G39-10-10U (8)

- 282 {
 - 1 PORT-SOLAR,3 POS 191277-01-CHT
 - SCREW G11-10-12U (7)



DETAIL GA

- NOTES:
- 2 REMOVE ALL SHIPPING RESTRAINTS AND INSTALL AS SPECIFIED IN THE INSTALLATION PROCESS.
 - 1 SEE MANUFACTURER'S INSTALLATION FOR ADDITIONAL INFORMATION.

FOR ELECTRICAL TORQUE SPECIFICATIONS SEE DWG NO. 128783-01-000

FOR ELECTRICAL CALLOUTS SEE DWG NO. 121339-01-000

- 196 TV ANT-AUTO,DIRECTIONAL AMPL
- 282 SOLAR PANEL - 100 WATT
- 783 SATELLITE HD TV SYSTEM AUTOC
- 193 TV ANT-DIGITAL AMPLIFIED
- 265 CODES/STANDARDS-CSA/CMVSS
- 1B1 CODES/STANDARDS USA

DESCRIPTION: 1B1 265

WIRING INSTL-BODY, 12V

SHEET: 7 OF 11 ITEM/PART NO: 000002859 / 31129501000 REV

8

7

6

5

4

3

2

1

16-Jan-2017

8 7 6 5 4 3 2 1

D

D

C

C

B

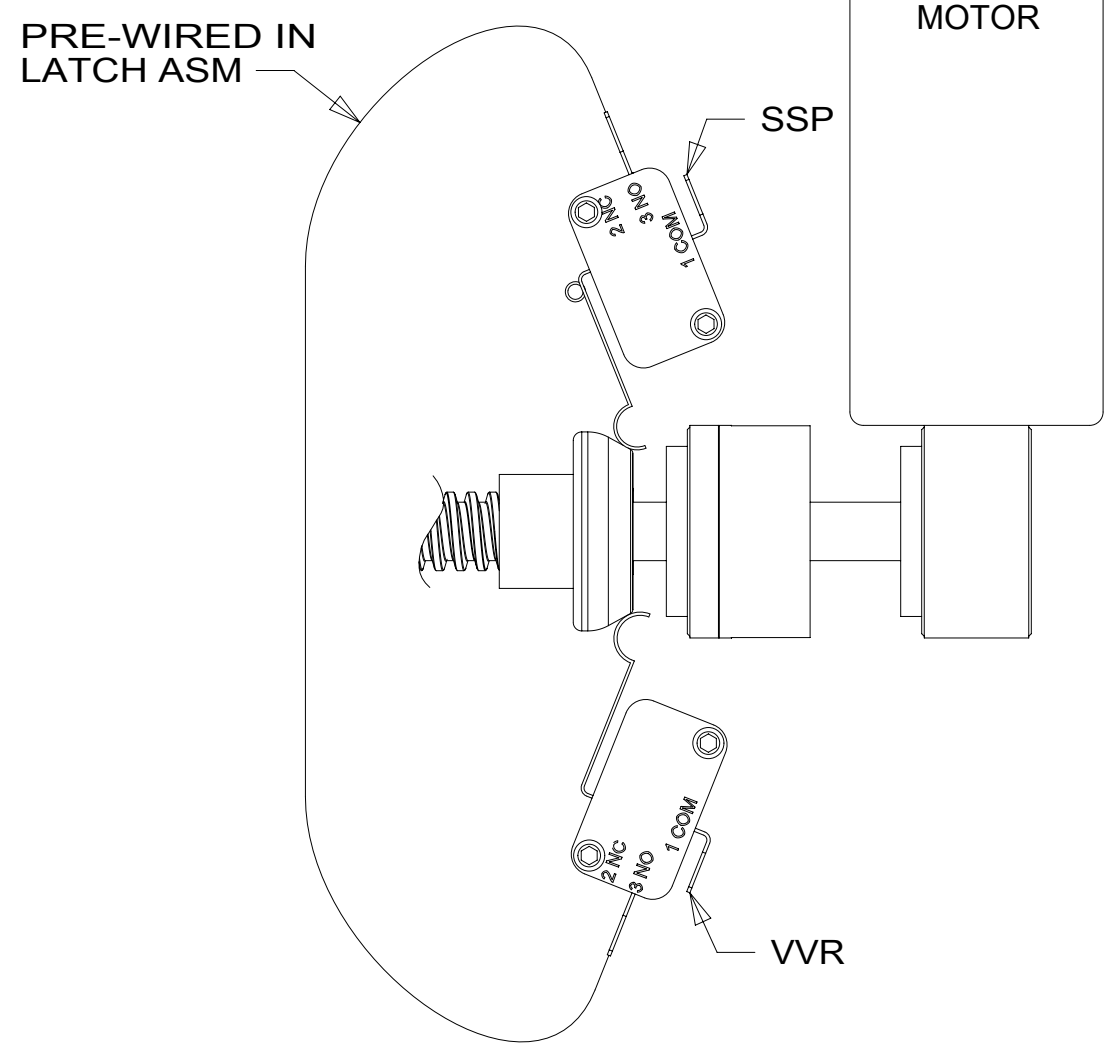
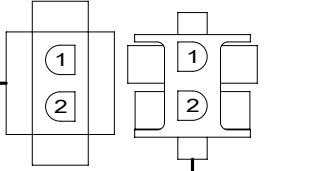
B

A

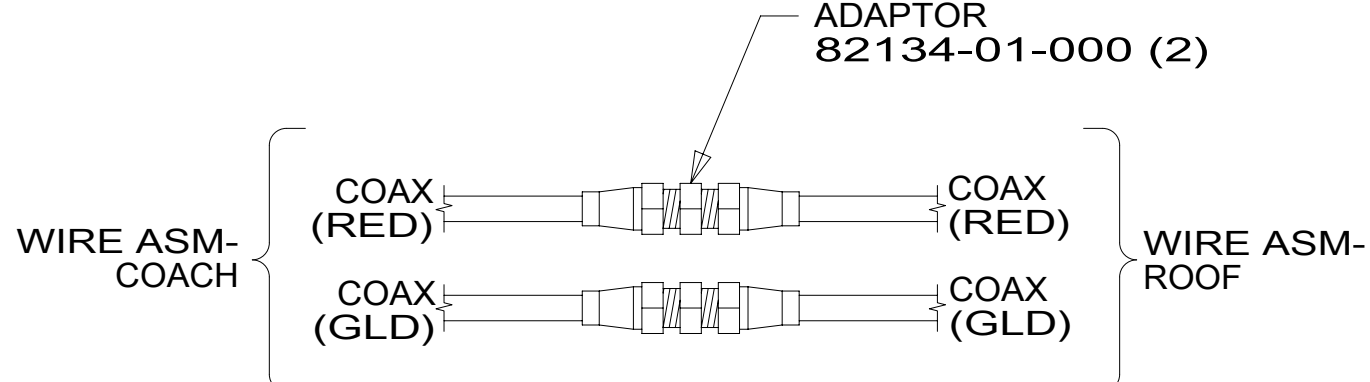
A

8 7 6 5 4 3 2 1 16-Jan-2017

WIRE ASM-SIDEWALL



DETAIL JA



DETAIL JB

ADAPTOR 82134-01-000 (2)

WIRE ASM-COACH COAX (RED) COAX (GLD) WIRE ASM-ROOF COAX (RED) COAX (GLD)

WIRE ASM-TRAY,FRONT LH 000006656 / 310416-01-000

PRLED-2 4

6-PIN HOUSING TO WIRE ASM-ROOF

WIRE ASM-TRAY,FRONT RH 000006655 / 310417-01-000

PRLED-2 3

6-PIN HOUSING TO WIRE ASM-ROOF

265 CODES/STANDARDS-CSA/CMVSS

1B1 CODES/STANDARDS USA

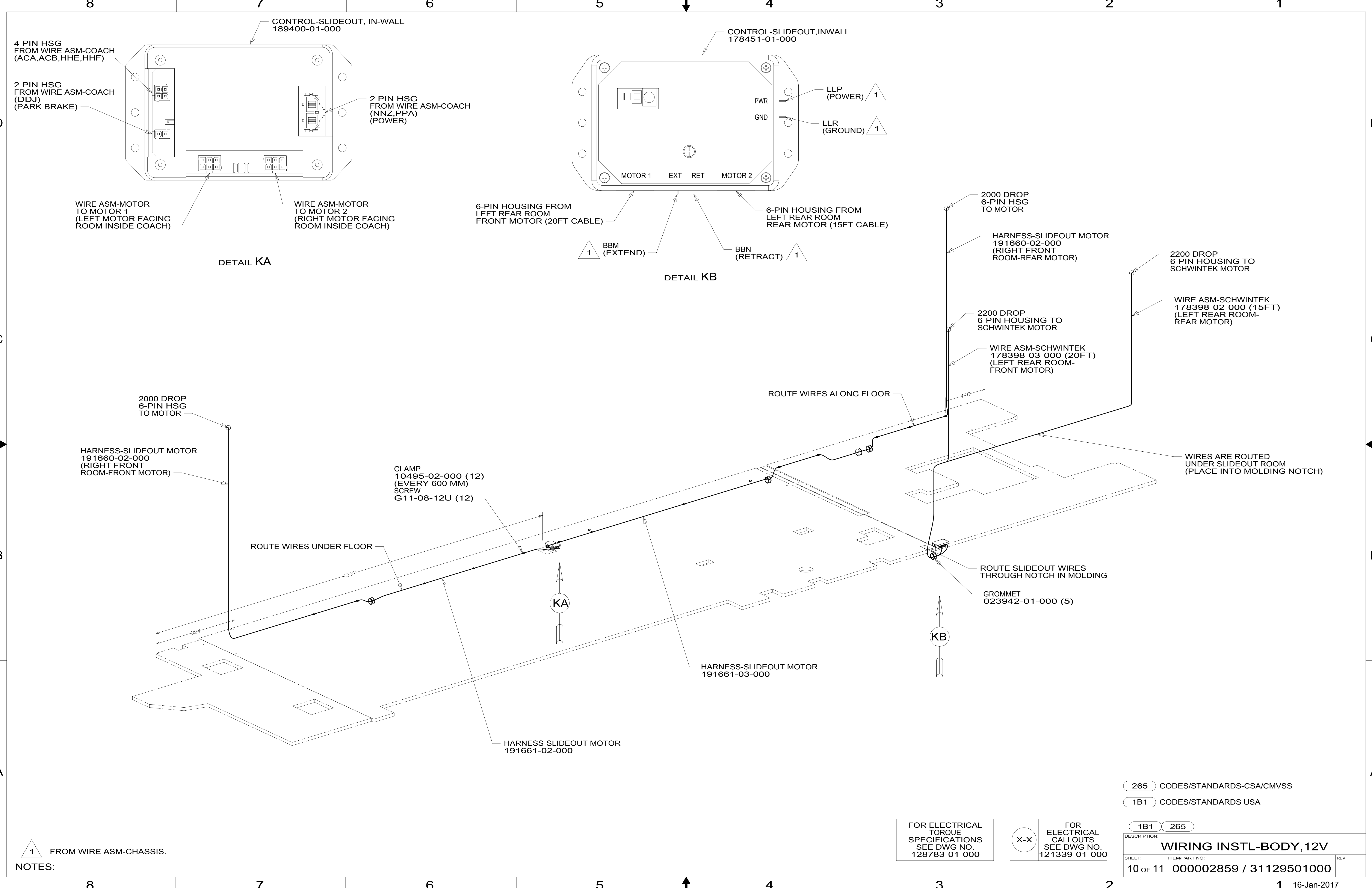
1B1 265

FOR ELECTRICAL TORQUE SPECIFICATIONS SEE DWG NO. 128783-01-000

FOR ELECTRICAL CALLOUTS SEE DWG NO. 121339-01-000

DESCRIPTION: WIRING INSTL-BODY, 12V

SHEET: 9 OF 11 ITEM/PART NO.: 000002859 / 31129501000 REV



4 PIN HSG FROM WIRE ASM-COACH (ACA,ACB,HHE,HHF)

2 PIN HSG FROM WIRE ASM-COACH (DDJ) (PARK BRAKE)

CONTROL-SLIDEOUT, IN-WALL 189400-01-000

DETAIL KA

WIRE ASM-MOTOR TO MOTOR 1 (LEFT MOTOR FACING ROOM INSIDE COACH)

WIRE ASM-MOTOR TO MOTOR 2 (RIGHT MOTOR FACING ROOM INSIDE COACH)

CONTROL-SLIDEOUT, INWALL 178451-01-000

DETAIL KB

LLP (POWER) 1

LLR (GROUND) 1

6-PIN HOUSING FROM LEFT REAR ROOM FRONT MOTOR (20FT CABLE)

6-PIN HOUSING FROM LEFT REAR ROOM REAR MOTOR (15FT CABLE)

BBM (EXTEND) 1

BBN (RETRACT) 1

2000 DROP 6-PIN HSG TO MOTOR

HARNESS-SLIDEOUT MOTOR 191660-02-000 (RIGHT FRONT ROOM-REAR MOTOR)

2200 DROP 6-PIN HOUSING TO SCHWINTEK MOTOR

WIRE ASM-SCHWINTEK 178398-02-000 (15FT) (LEFT REAR ROOM-REAR MOTOR)

2200 DROP 6-PIN HOUSING TO SCHWINTEK MOTOR

WIRE ASM-SCHWINTEK 178398-03-000 (20FT) (LEFT REAR ROOM-FRONT MOTOR)

2000 DROP 6-PIN HSG TO MOTOR

HARNESS-SLIDEOUT MOTOR 191660-02-000 (RIGHT FRONT ROOM-FRONT MOTOR)

ROUTE WIRES ALONG FLOOR

WIRES ARE ROUTED UNDER SLIDEOUT ROOM (PLACE INTO MOLDING NOTCH)

CLAMP 10495-02-000 (12) (EVERY 600 MM)

SCREW G11-08-12U (12)

ROUTE WIRES UNDER FLOOR

ROUTE SLIDEOUT WIRES THROUGH NOTCH IN MOLDING

GROMMET 023942-01-000 (5)

HARNESS-SLIDEOUT MOTOR 191661-03-000

HARNESS-SLIDEOUT MOTOR 191661-02-000

1 FROM WIRE ASM-CHASSIS.

NOTES:

FOR ELECTRICAL TORQUE SPECIFICATIONS SEE DWG NO. 128783-01-000

FOR ELECTRICAL CALLOUTS SEE DWG NO. 121339-01-000

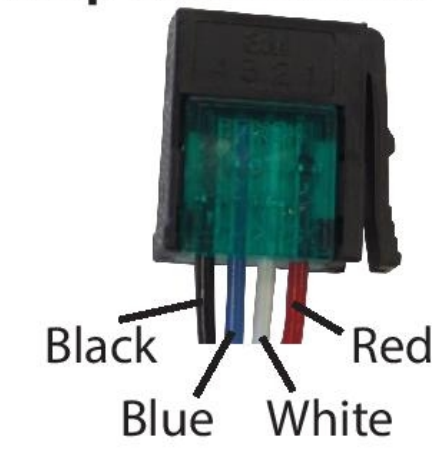
265 CODES/STANDARDS-CSA/CMVSS

1B1 CODES/STANDARDS USA

1B1 265	
DESCRIPTION: WIRING INSTL-BODY, 12V	
SHEET: 10 OF 11	ITEM/PART NO: 000002859 / 31129501000
REV	

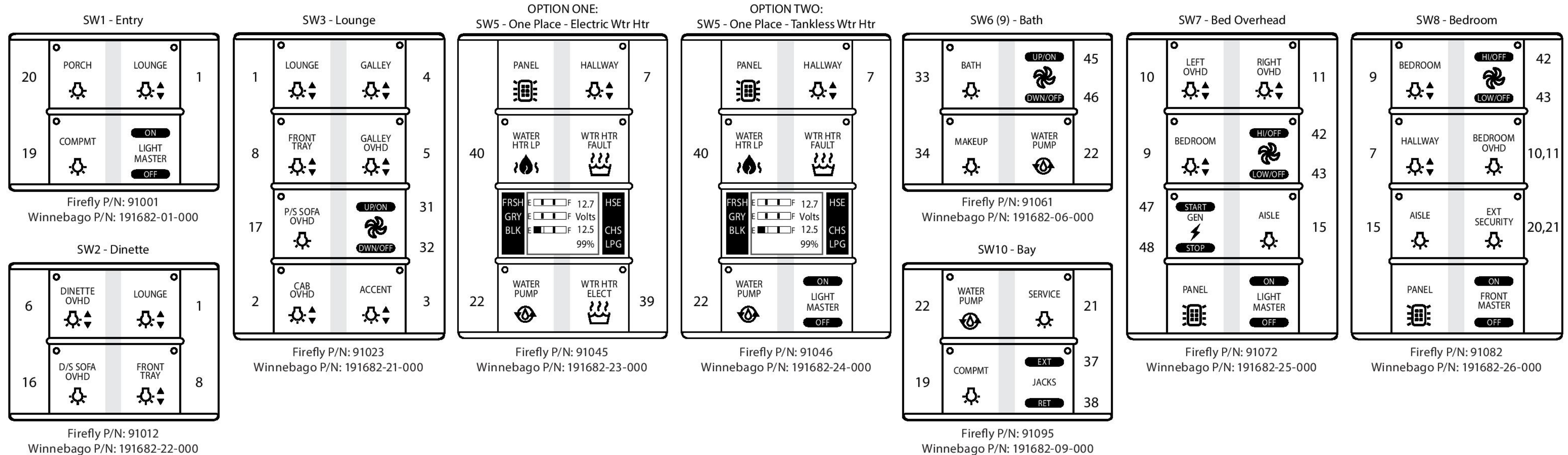
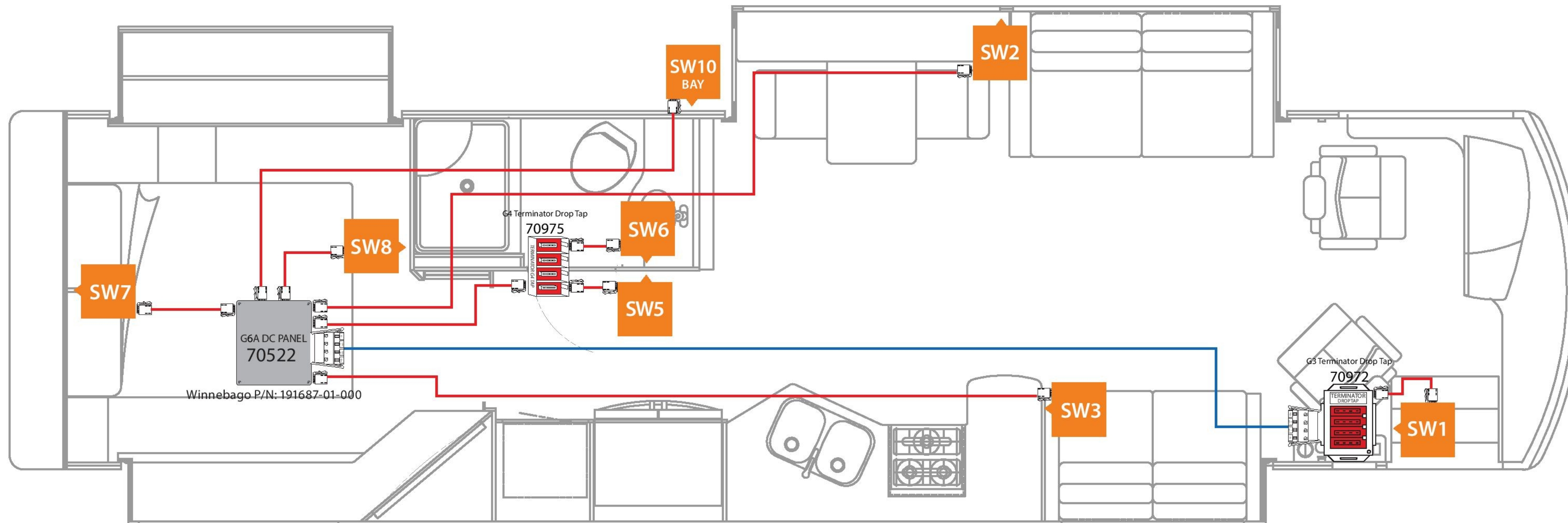
WINNEBAGO - P36M
 SSP -15 NETWORK WIRING DIAGRAM
 SWITCH PANEL LAYOUT
 REVISION 1v8 3/4/15

Drop Cable Connections



NETWORK LEGEND

- TRUNK CABLE —
- DROP CABLE —
- SWITCH POSITION ■



THIS SHEET FOR REFERENCE ONLY

FOR ELECTRICAL TORQUE SPECIFICATIONS SEE DWG NO. 128783-01-000

FOR ELECTRICAL CALLOUTS SEE DWG NO. 121339-01-000

- 265 CODES/STANDARDS-CSA/CMVSS
- 1B1 CODES/STANDARDS USA

DESCRIPTION: WIRING INSTL-BODY, 12V	
SHEET: 11 OF 11	ITEM/PART NO: 000002859 / 31129501000
REV 1 16-Jan-2017	