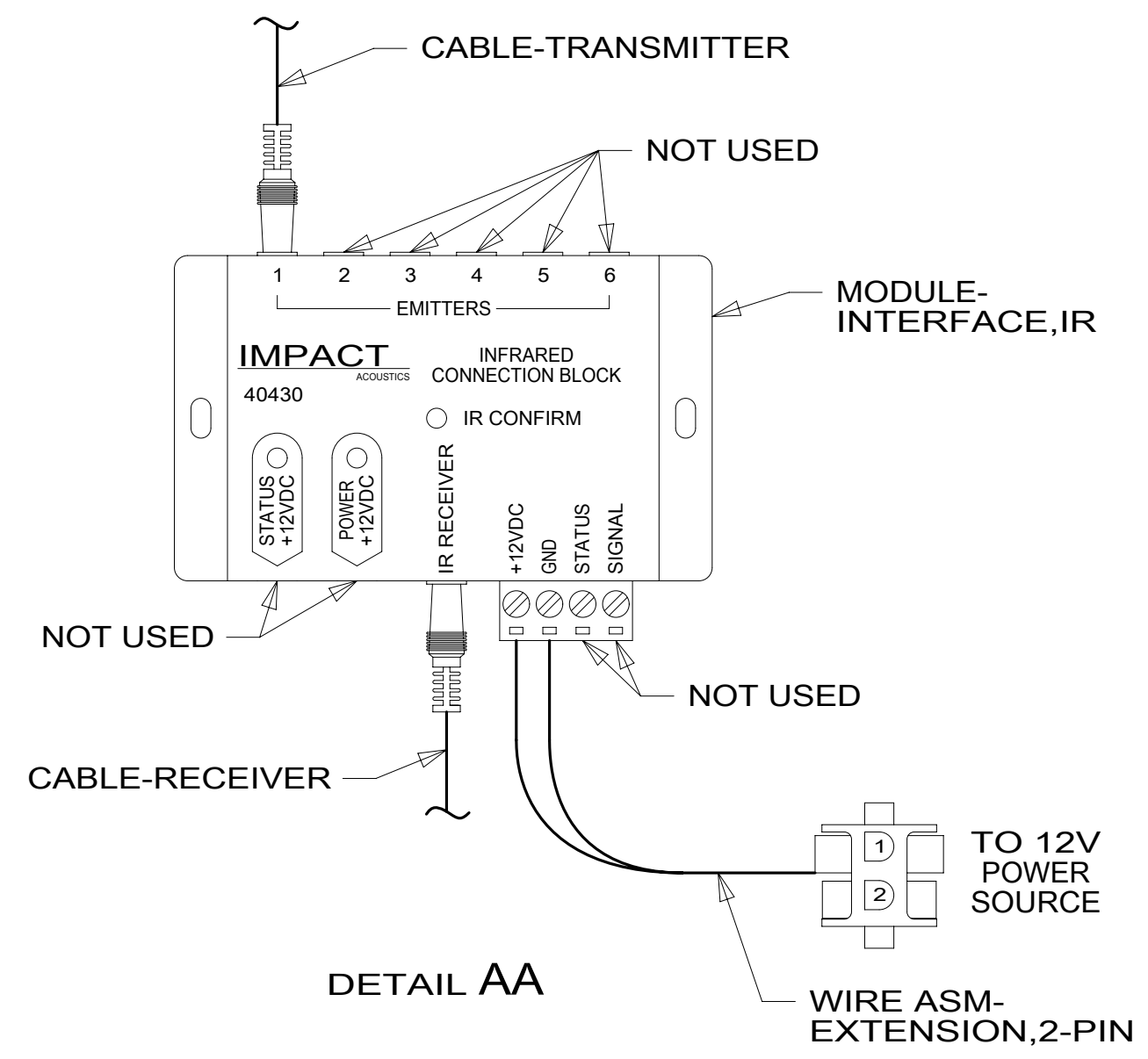


8 7 6 5 4 3 2 1

CABINET ASM-OVHD,DOOR (REF)
 CLAMP 10497-01-000
 WALL PLATE-BLANK,PLASTIC 192613-01-CHT (2)
 PANEL-COVER,BRACKET 194672-03-CHT SCREW 000G67-08-08U
 PANEL-COVER,BRACKET 000122894 / 323485-01-CHT SCREW 000G67-08-08U
 PLATE-WALL, TRIPLE COAX HORIZ 149557-04-CHT
 CONNECTOR-F.90 RIGHT ANGLE 176986-01-000 (3)
 MODULE-INTERFACE, IR IMPACT 149750-09-000 WIRE ASM-EXTENSION,2 PIN 000028274 / 316209-01-000 DETAIL AA
 RCP-2 (PUR) SAT PREP
 RCP-2 (PUR) OVHD A/V CAB
 CLAMP 10497-02-000
 SWITCH-VID,ANT, DVD PWR SUP 193571-01-000 BRACKET-VIDEO SWITCH 156586-01-CHT FASTENER-DUAL LOCK 085774-01-000 (200 MM) (2) 085774-02-000 (200 MM) (2)
 TRANSMITTER-INFRARED,IMPACT 149750-11-000
 COAX (GLD) TO SAT PREP PLATE
 COAX (ORG) TO SAT PREP PLATE
 COAX (BRN) TO VIDEO SWITCHER
 12V TO VIDEO SWITCHER
 COAX (BLU) TO VIDEO SWITCHER
 COAX (YEL) TO VIDEO SWITCHER
 RCA 3-WAY TO VIDEO SWITCHER
 COAX (RED/RED) TO VIDEO SWITCHER
 COAX (GRN) TO VIDEO SWITCHER
 COAX (RED) TO VIDEO SWITCHER
 HDMI TO SAT PREP AREA
 12V TO IR MODULE
 IR RECEIVER CABLE
 110V (PUR) FROM ROOF TO OUTLET
 12V AND COAX FROM ROOF

- 4 TAPE IR TRANSMITTER TO BACK OF COVER PANEL 194672-02-CHT USING TAPE 8363-01-000.
3. WHERE WIRES PASS THROUGH HOLES IN STEEL AND NOT OTHERWISE PROTECTED, USE GROMMET 92908-02-000.
2. ALL WIRES TO BE SECURED WITH CLAMP 10495-01-000 OR CLIP 80734-01-000 EVERY 600 MM. USE SCREW G67-10-12U UNLESS OTHERWISE SPECIFIED.
1. 110V WIRE TO BE CLAMPED WITH CLAMP 10497-05-000 WITHIN 200MM OF OUTLET BOXES, USE SCREW G67-10-12U.

NOTES:



265 CODES/STANDARDS-CSA/CMVSS
 1B1 CODES/STANDARDS USA

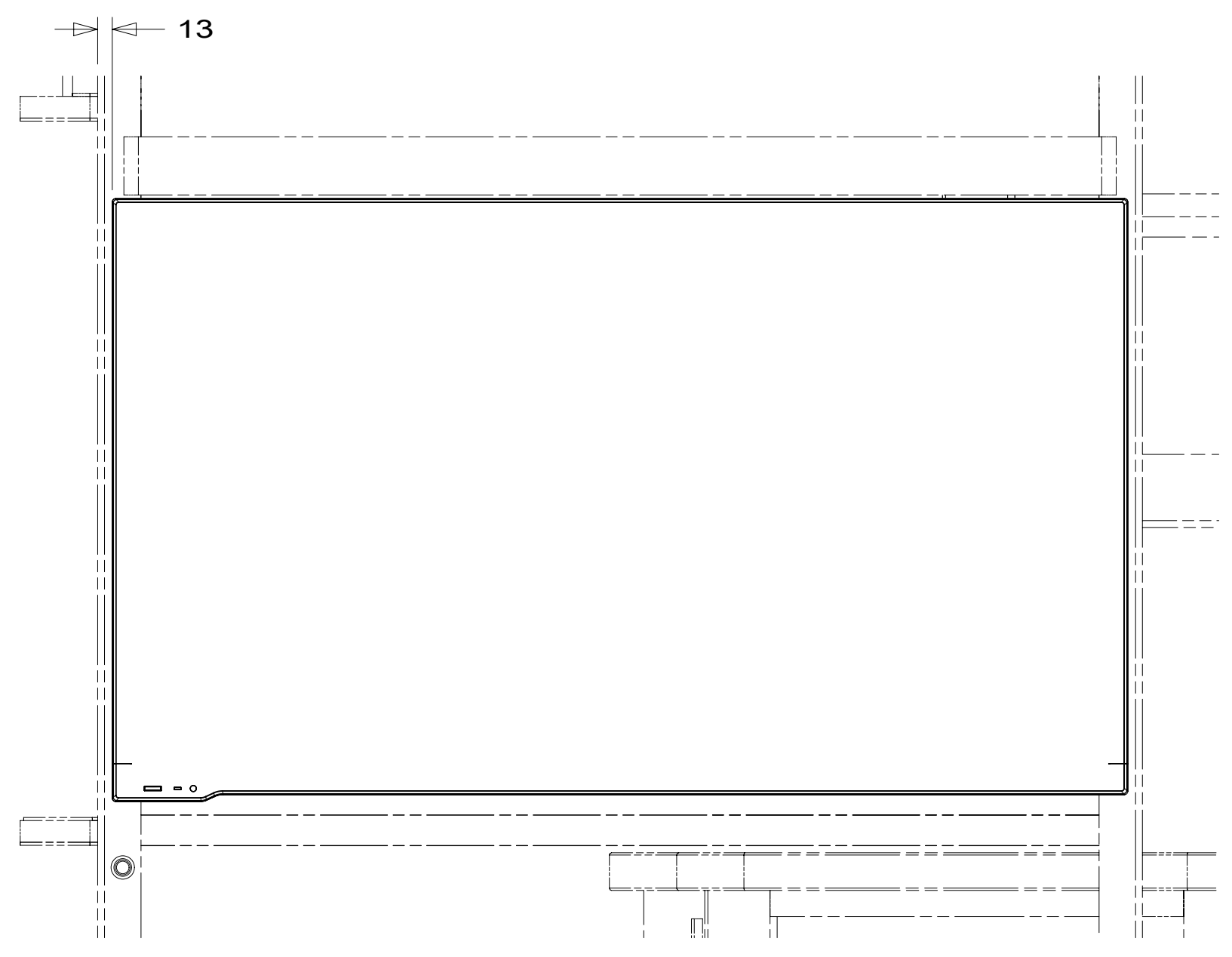
1B1 265

WINNEBAGO COPYRIGHT 2016 WINNEBAGO INDUSTRIES, INC.	
DSNR:	ALL DIMENSIONS ARE IN MILLIMETERS
DIFFR:	
UNSPECIFIED TOLERANCES:	MATERIAL:
WHOLE DIM (X) : 3	
ONE-PLACE (X.X) : 1.5	
TWO-PLACE (X.XX) : 0.50	
ANGLE : 1°	
REFER TO ES0018 FOR FASTENER TIGHTENING GUIDELINES	WEIGHT: (LBS) FIRST USED: 17 E35F
DESCRIPTION: WIRING INSTL-TV/DVD	
SHEET: 1 OF 4	ITEM/PART NO: 000002511 / 31201301000
REF:	1 07-Nov-2017

FOR ELECTRICAL TORQUE SPECIFICATIONS SEE DWG NO. 128783-01-000

FOR ELECTRICAL CALLOUTS SEE DWG NO. 121339-01-000

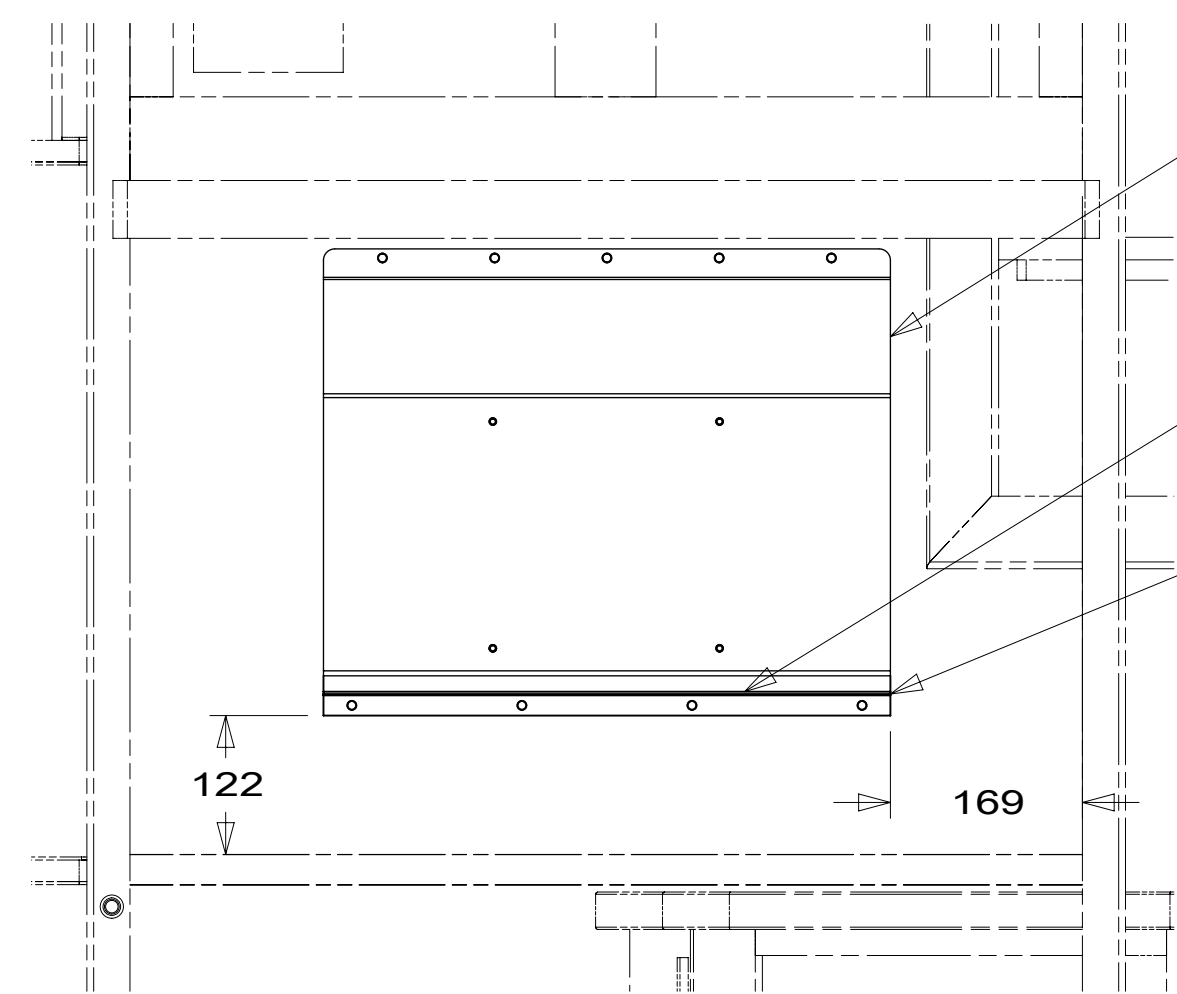
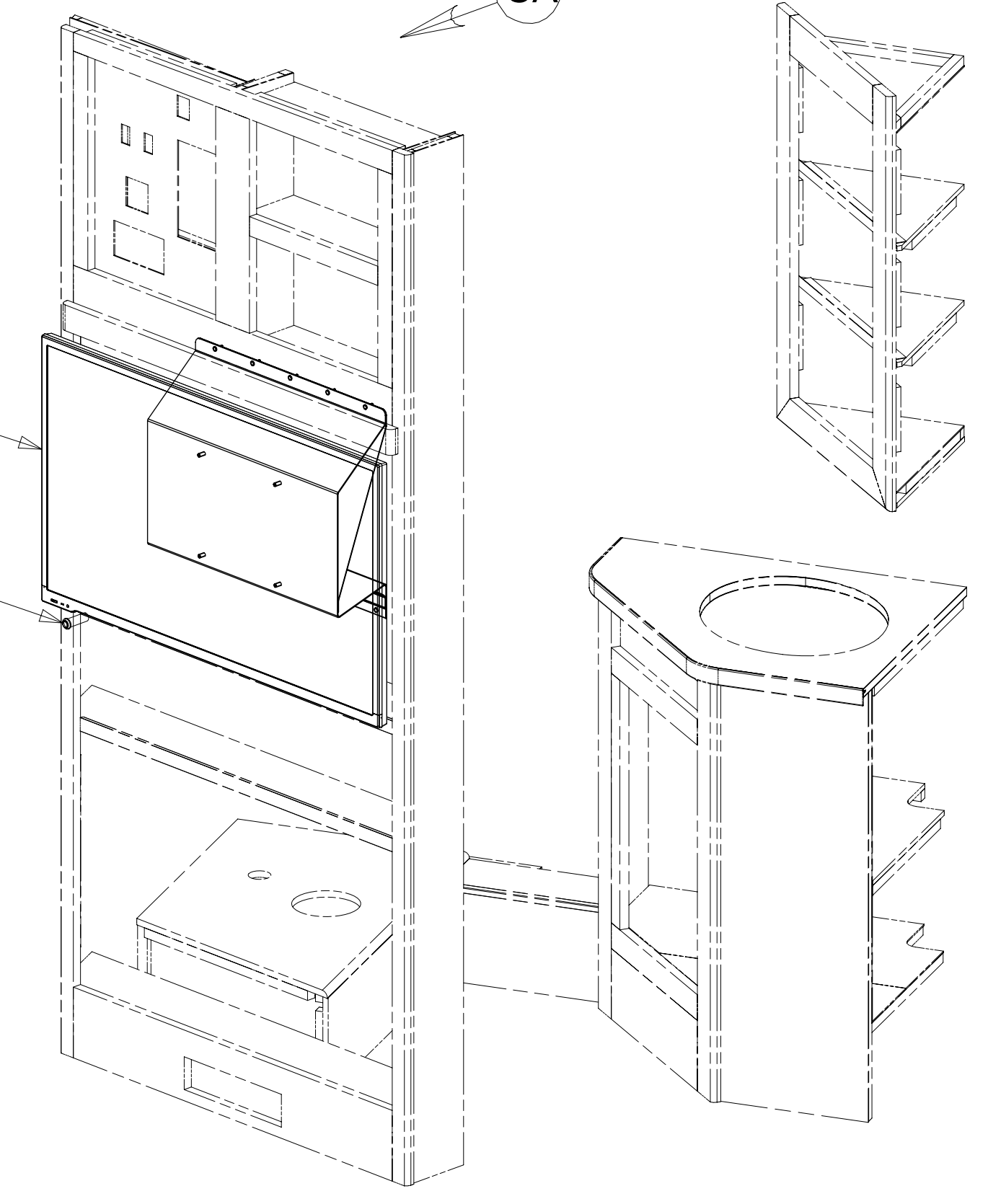
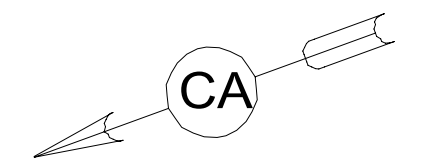
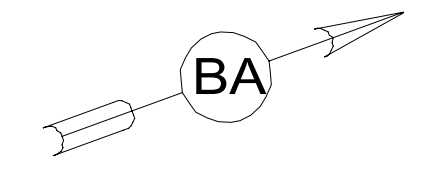
8 7 6 5 4 3 2 1



VIEW BA

TV-39",FLAT
 PANEL DLED,HDTV
 000023379 / 314833-01-000
 SCREW
 0MG04U-06-016 (4)

RECEIVER-
 INFRARED,IMPACT
 149750-13-000



VIEW BA
 (TV NOT SHOWN)

BRACKET-MOUNTING,TV
 00002926 / 310252-01-CHT
 SCREW
 G11-08-12U (5)

BRACKET-MOUNTING,TV
 00002996 / 310253-01-CHT

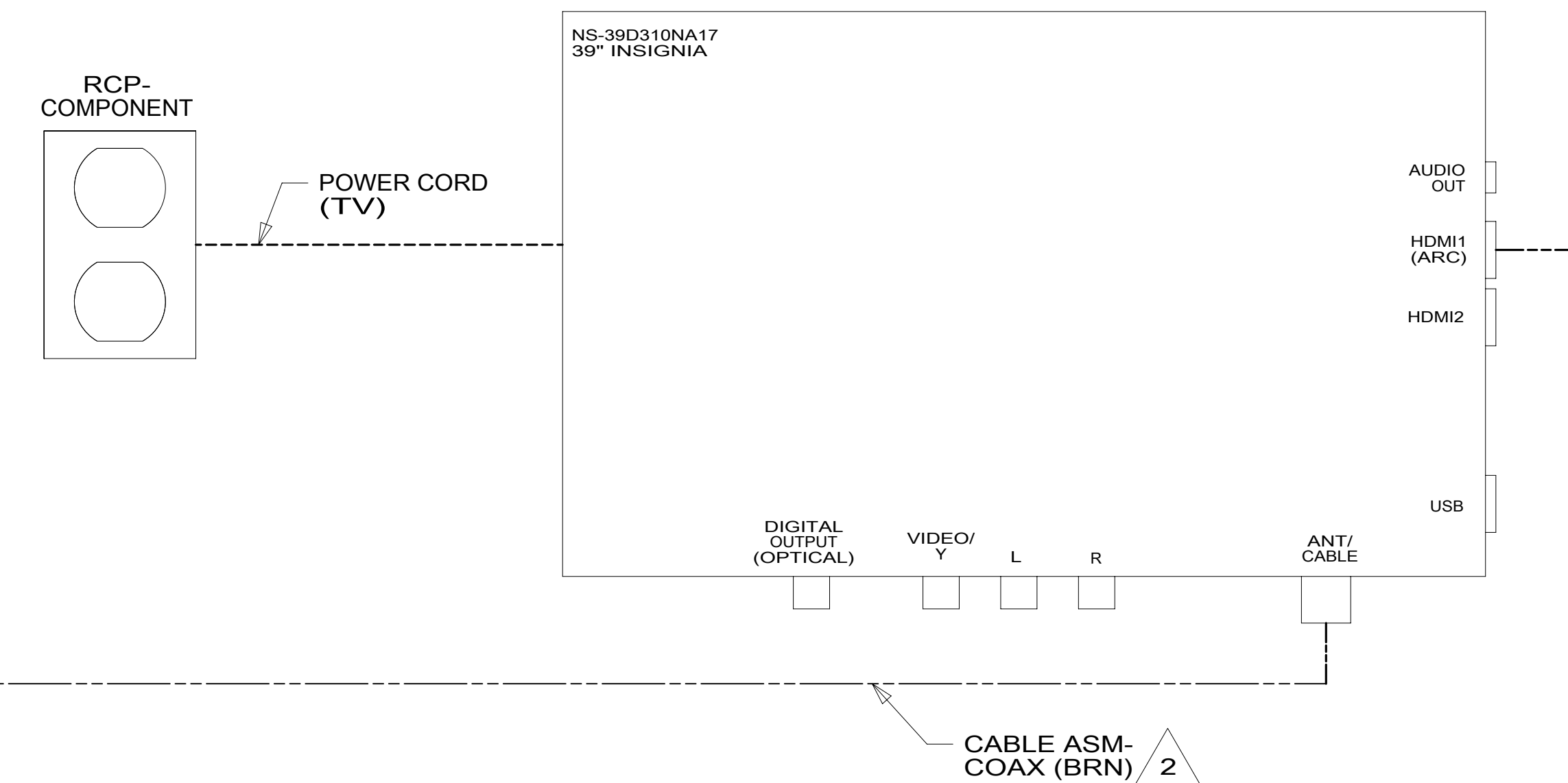
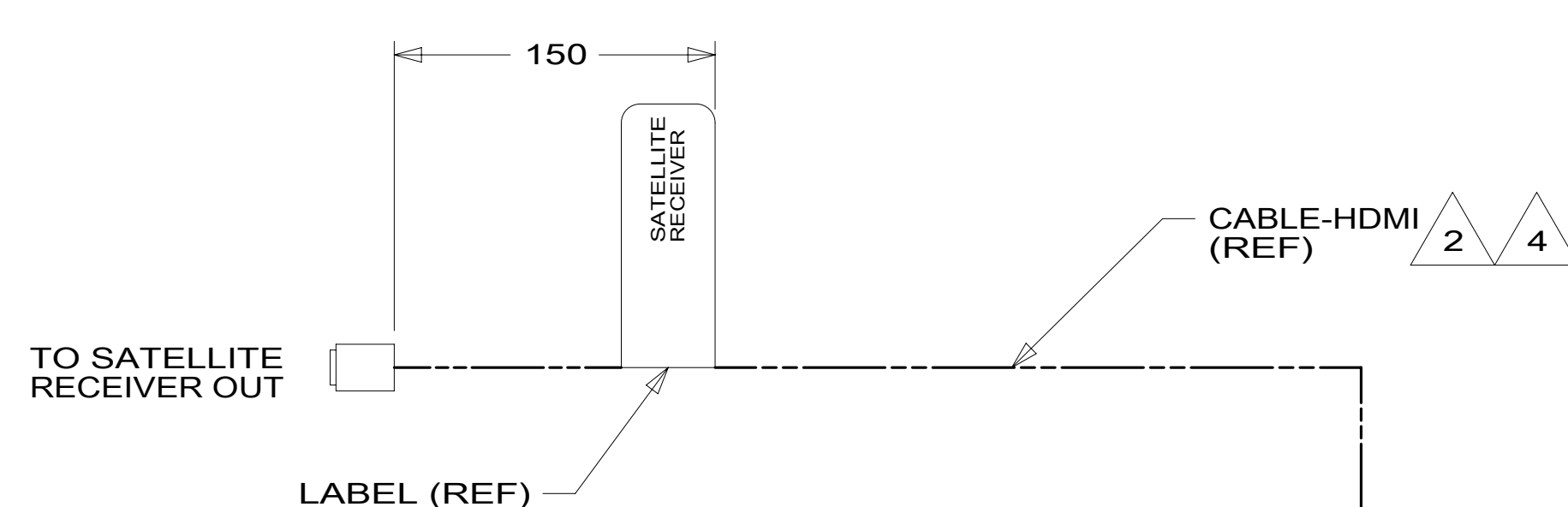
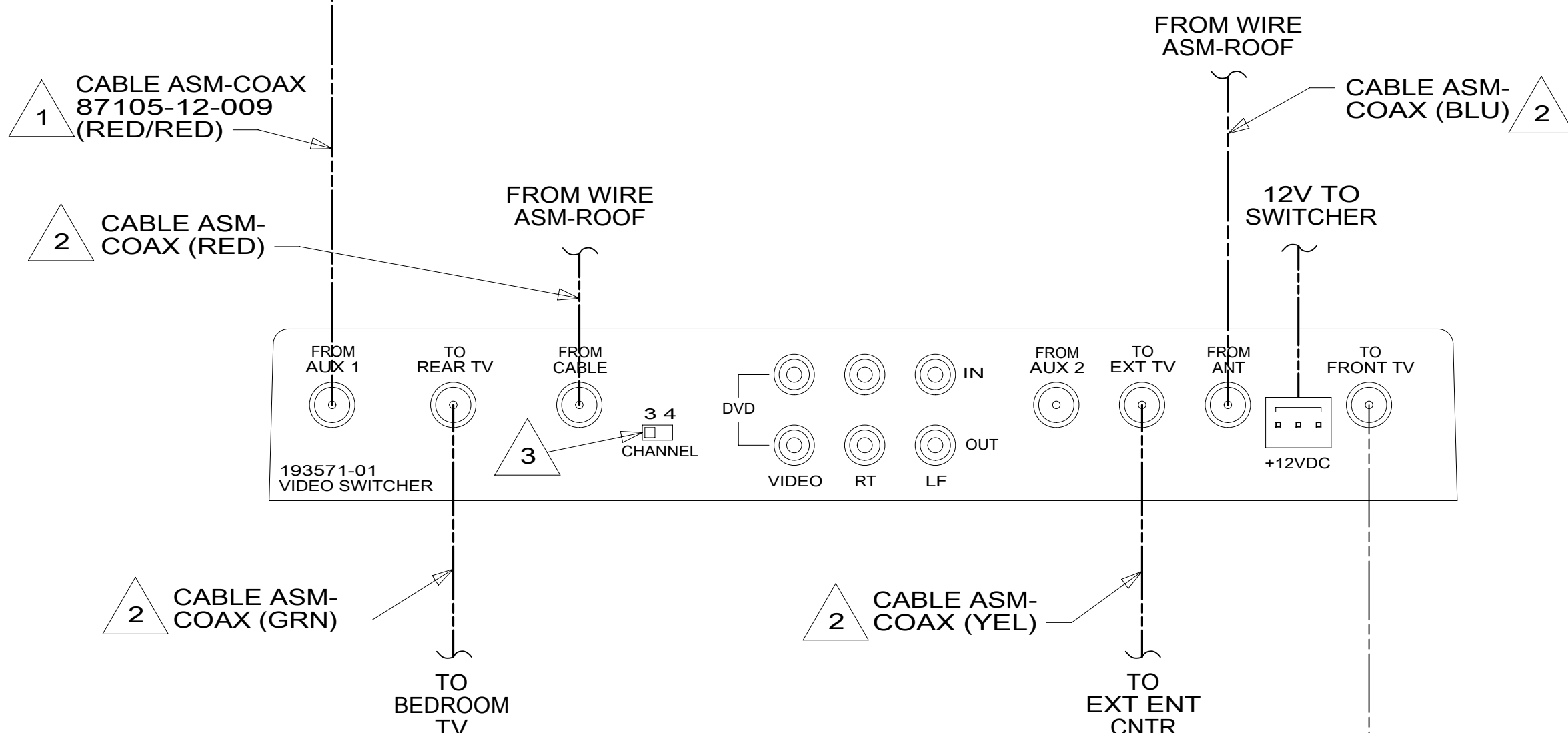
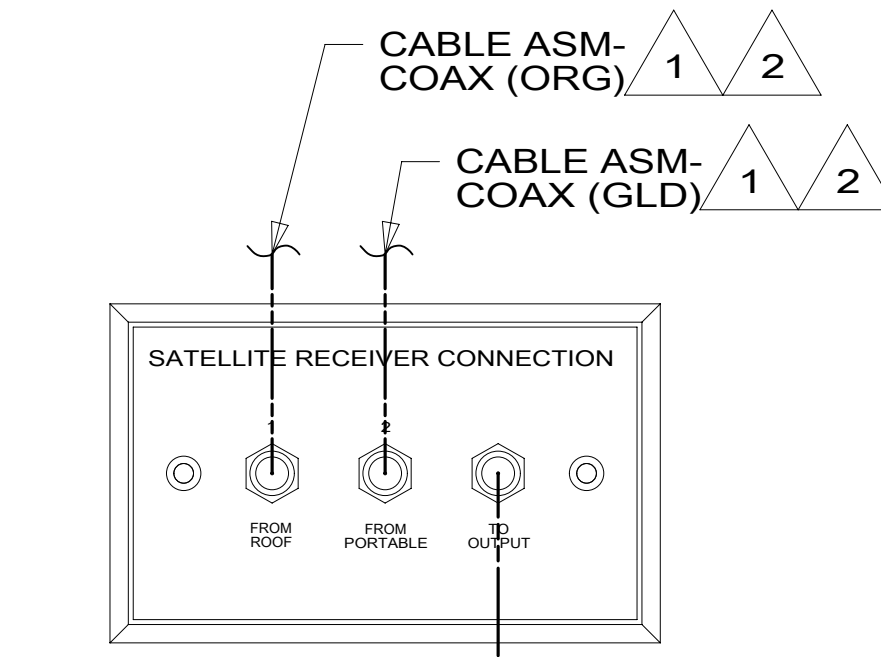
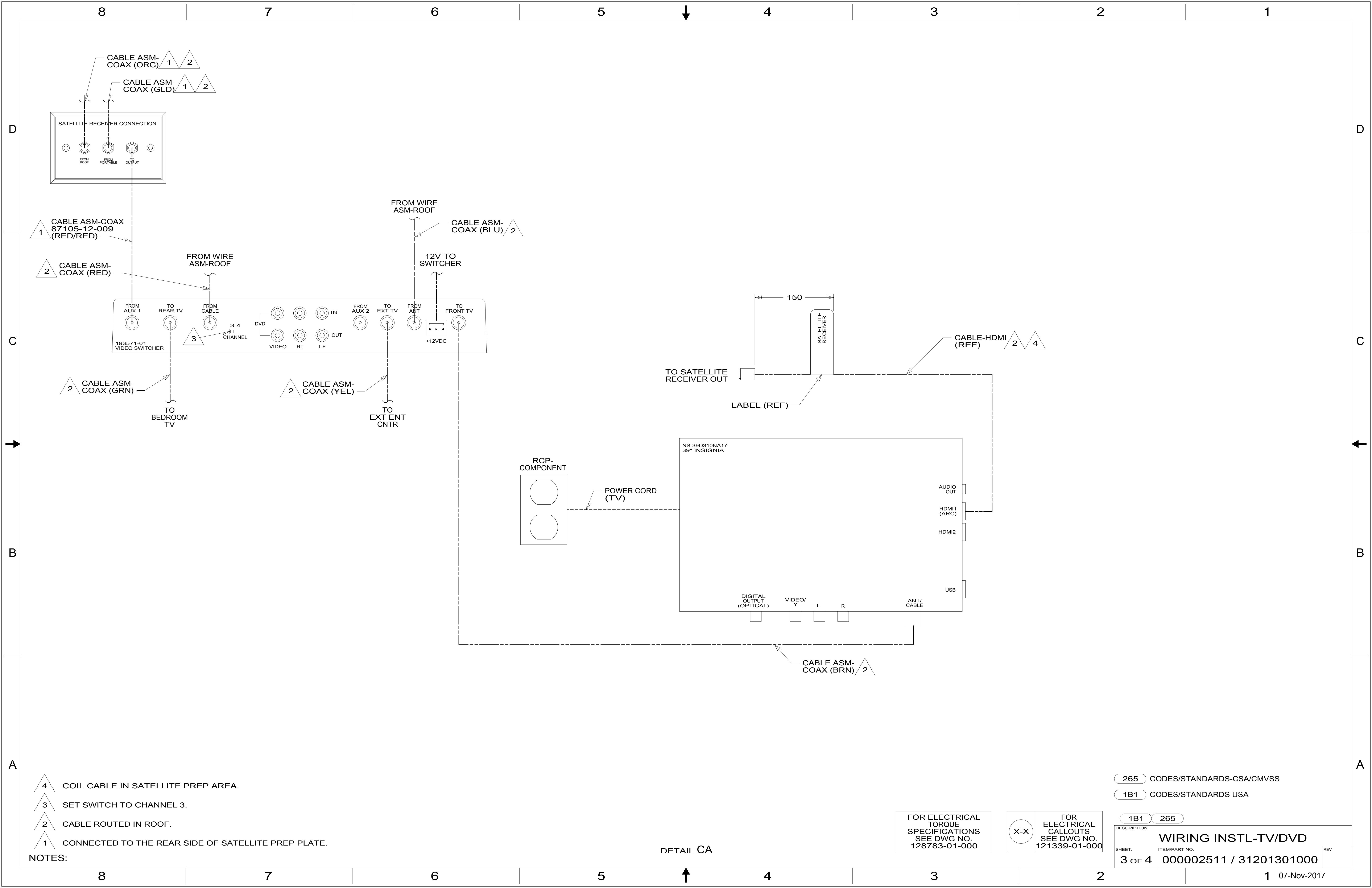
CLIP-TRIM
 130034-04-CHT
 SCREW
 G11-08-12U (4)

- 265 CODES/STANDARDS-CSA/CMVSS
- 1B1 CODES/STANDARDS USA

FOR ELECTRICAL
 TORQUE
 SPECIFICATIONS
 SEE DWG NO.
 128783-01-000

FOR
 ELECTRICAL
 CALLOUTS
 SEE DWG NO.
 121339-01-000

DESCRIPTION:		1B1	265
WIRING INSTL-TV/DVD			
SHEET:	ITEM/PART NO.:	REV	
2 OF 4	000002511 / 31201301000		



- NOTES:
- 4 COIL CABLE IN SATELLITE PREP AREA.
 - 3 SET SWITCH TO CHANNEL 3.
 - 2 CABLE ROUTED IN ROOF.
 - 1 CONNECTED TO THE REAR SIDE OF SATELLITE PREP PLATE.

265 CODES/STANDARDS-CSA/CMVSS
 1B1 CODES/STANDARDS USA

FOR ELECTRICAL TORQUE SPECIFICATIONS SEE DWG NO. 128783-01-000

X-X FOR ELECTRICAL CALLOUTS SEE DWG NO. 121339-01-000

DESCRIPTION:		1B1 265	
WIRING INSTL-TV/DVD			
SHEET:	ITEM/PART NO.:	REV	
3 OF 4	000002511 / 31201301000		

DETAIL CA

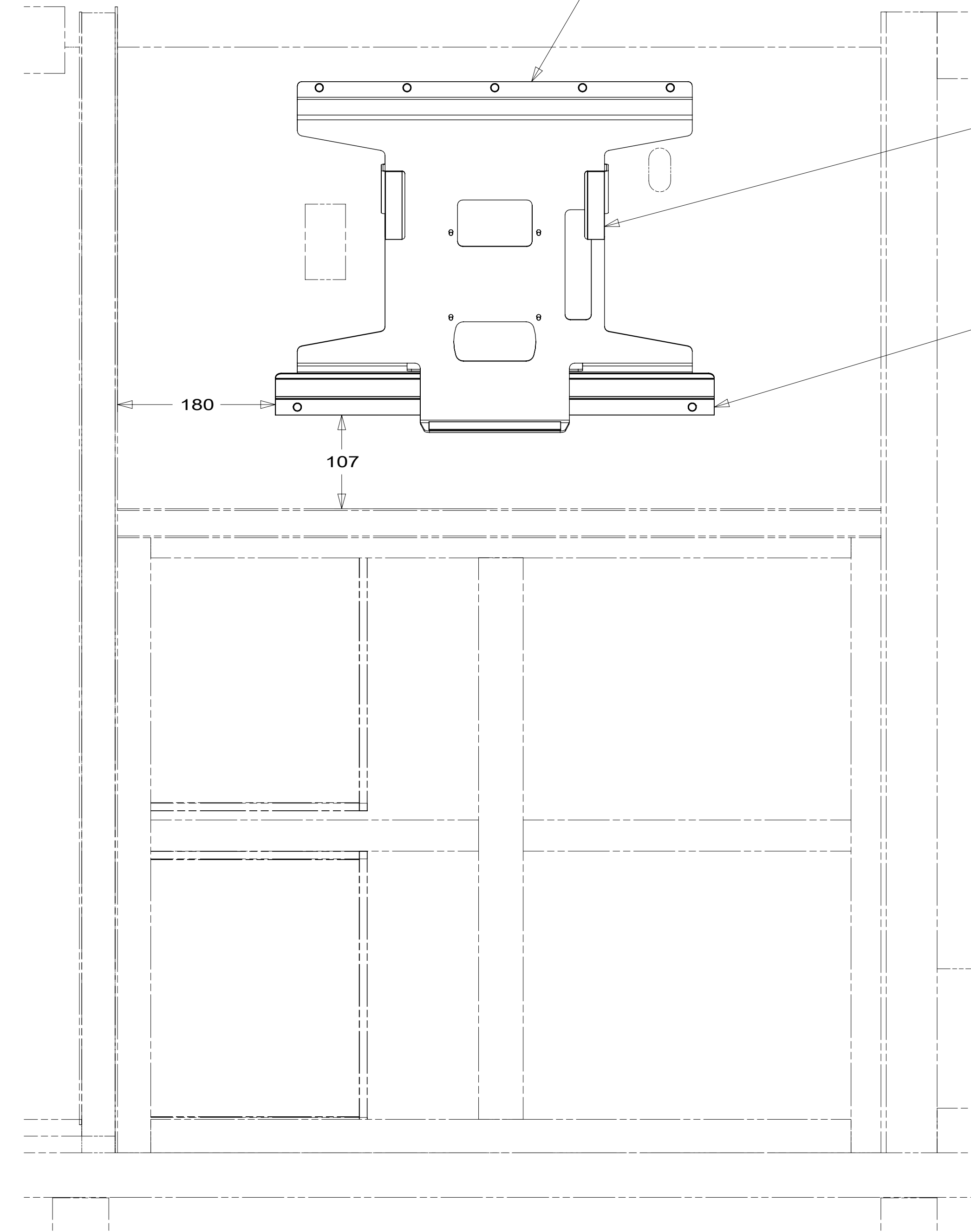
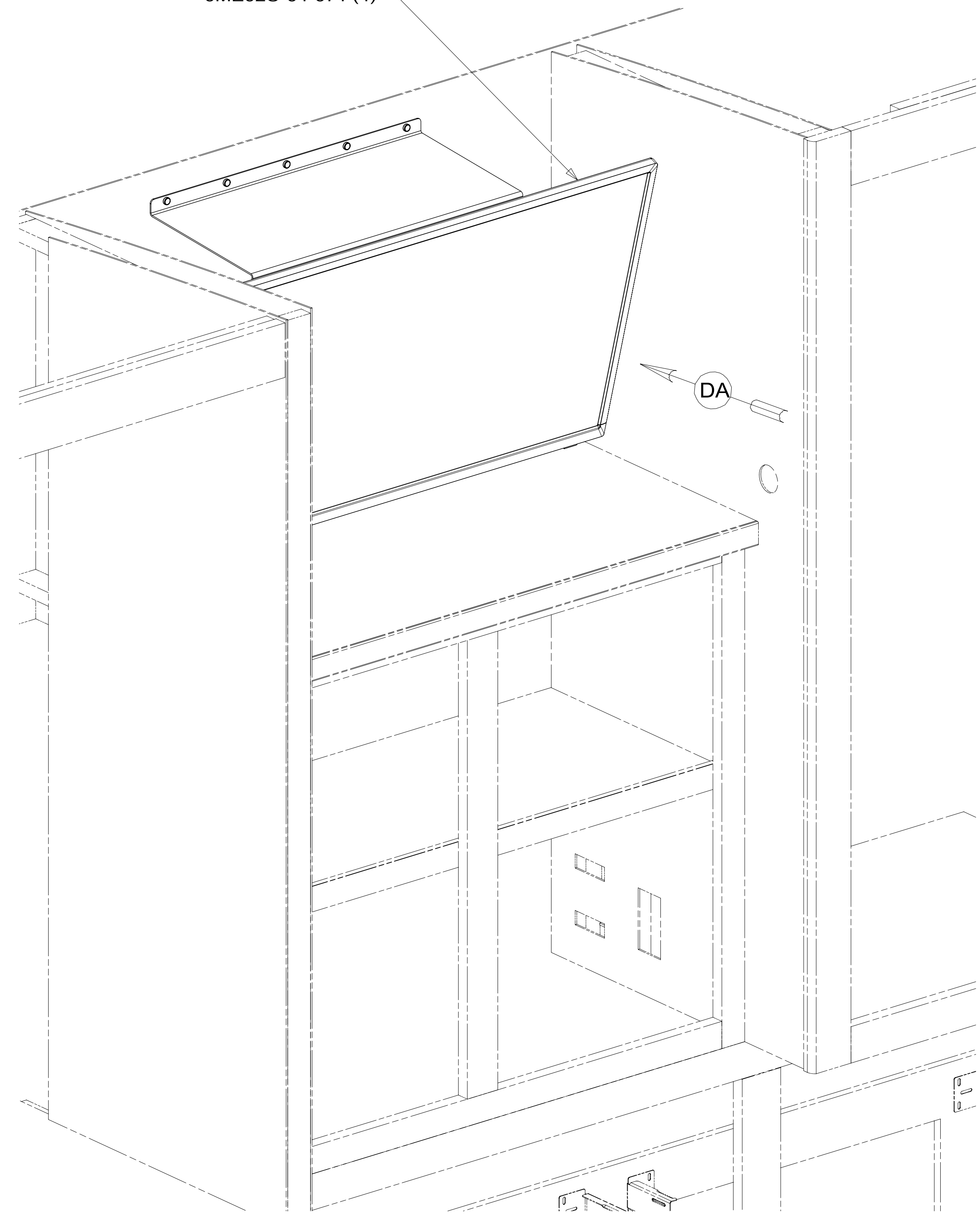
8 7 6 5 4 3 2 1

TV-32" HDTV
 000031285 / 316939-01-000
 SCREW
 OMG02U-04-012 (4)
 WASHER-LOCK
 OME02U-04-071 (4)

BRACKET-TV, 32 INSIG
 000035327 / 317993-01-CHT
 SCREW
 000G39-10-16U (5)

TAPE-FOAM
 076322-22-000 (80 MM) (2) ¹
 TAPE-FOAM
 076322-23-000 (150 MM)

CLIP-TRIM
 130034-04-CHT
 SCREW
 000G39-10-16U (4)



VIEW DA
 (TV NOT SHOWN)

¹ PREP SURFACE WITH 87211-01-000.
 NOTES:

FOR ELECTRICAL
 TORQUE
 SPECIFICATIONS
 SEE DWG NO.
 128783-01-000

FOR ELECTRICAL
 CALLOUTS
 SEE DWG NO.
 121339-01-000

- 68X TV - BEDROOM
- 265 CODES/STANDARDS-CSA/CMVSS
- 1B1 CODES/STANDARDS USA

DESCRIPTION:	1B1 265 68X	
WIRING INSTL-TV/DVD		
SHEET:	ITEM/PART NO:	REV
4 OF 4	000002511 / 31201301000	

8 7 6 5 4 3 2 1 07-Nov-2017