

| | | |
|--|-------------------|-----|
| CABLE ASM-CHASSIS GND EXT (BLK) | 133566-12-010 | |
| CABLE ASM-CHASSIS BATTERY DISCONNECT SUPPLY (RED) | 141415-32-026 | |
| CABLE ASM-COACH BATTERY DISCONNECT SUPPLY (YEL) | 141416-52-037 | |
| CABLE ASM-COACH BATTERY GND (BLK) | 133567-12-008 | |
| CABLE ASM-CHASSIS BATTERY DISCONNECT RETURN (PUR) | 141415-12-025 | |
| CABLE ASM-GENERATOR (GRN) | 141415-42-099 | |
| LEVELING SYSTEM POWER CABLE (BLU) | 141415-29-010 | 60M |
| LEVELING SYSTEM GND CABLE (BLK) | 133566-12-008 | 60M |
| CABLE ASM-STARTER (RED) | 141416-32-012 | |
| CABLE ASM (ORG) FROM COACH BATTERY TO INVERTER FUSE | 175207-62-005 | |
| CABLE ASM (ORG) FROM INVERTER FUSE TO INVERTER BATTERY DISCONNECT | 175207-62-016 | |
| CABLE ASM (ORG) FROM BATTERY DISCONNECT TO POSITIVE POST ON INVERTER | 175207-62-006 | |
| CABLE ASM (BLK) FROM COACH BATTERY TO INVERTER NEGATIVE TERMINAL | 175211-02-018 | |
| CABLE ASM (YEL) JUMPER BETWEEN POSITIVE POSTS ON COACH BATTERY | 141417-52-004 | |
| CABLE ASM (YEL) JUMPER BETWEEN POSITIVE POSTS ON COACH BATTERY | 141417-51-002 (2) | 15L |
| CABLE ASM (BLK) JUMPER BETWEEN NEGATIVE POSTS ON COACH BATTERY | 133568-12-004 | |
| CABLE ASM (BLK) JUMPER BETWEEN NEGATIVE POSTS ON COACH BATTERY | 133568-11-002 (2) | 15L |
| CABLE ASM-INVERTER GROUND (GRN) | 136145-01-018 | |
| CABLE ASM-COACH BATTERY FUSE | 141416-52-005 | |
| CABLE ASM-CHASSIS BATTERY FUSE | 141415-32-003 | |
| CABLE ASM-TEMPERATURE | | 1 |

60M

60M

15L

15L

1

- 60M HYDRAULIC LEVEL JACKS-AUTO
- 15L RESIDENTIAL REFRIGERATOR PKG
- 265 CODES/STANDARDS-CSA/CMVSS
- 1B1 CODES/STANDARDS USA

1B1 265



| | | | |
|--|---------------|-----------------------------------|--|
| DSNR: | | ALL DIMENSIONS ARE IN MILLIMETERS | |
| DFFR: | | | |
| UNSPECIFIED TOLERANCES: | MATERIAL: | | |
| WHOLE DIM (X) : | | | |
| ONE-PLACE (X.X) : | | | |
| TWO-PLACE (X.XX) : | | | |
| ANGLE : | | | |
| REFER TO ES0018 FOR FASTENER TIGHTENING GUIDELINES | WEIGHT: (LBS) | FIRST USED: | |
| | | 17 E35F | |

BATTERY INSTL

| | | |
|--------|-------------------------|------|
| SHEET: | ITEM/PART NO.: | REV: |
| 1 OF 4 | 000002471 / 31200701000 | |

REF: 1 13-Dec-2016

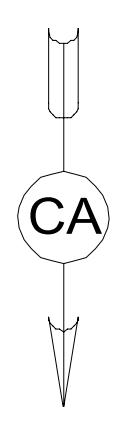
FOR ELECTRICAL TORQUE SPECIFICATIONS SEE DWG NO. 128783-01-000

FOR ELECTRICAL CALLOUTS SEE DWG NO. 121339-01-000

1 CABLE ASM-TEMPERATURE IS PART OF WIRE ASM-CHASSIS.

NOTES:

8 7 6 5 4 3 2 1



D

D

C

C

B

B

A

A

2 CABLE ASM-CHASSIS GND EXT (BLK)
TO GROUND BOLT ON FRAME RAIL

FUSE HOLDER
188460-01-000
FUSE-400A
188461-03-000
SCREW
G42-04-12U (2)

CABLE ASM-CHASSIS
BATTERY FUSE (RED)

CABLE ASM-CHASSIS BATTERY
DISCONNECT SUPPLY (RED) 1

TERMINAL-BATTERY
47441-01-000

BATTERY
(CHASSIS SUPPLIED)
TIEDOWN ASM
160014-03-CHT
BOLT
51387-06-000 (2)
NUT
D39-06-00B (3)
WASHER-RUBBER
184541-01-CHT (2)

2 SEE WIRING INSTL-CHASSIS FOR ADDITIONAL INFORMATION.
1 SEE CHASSIS ELECTRICAL BOX ASM FOR ADDITIONAL INFORMATION.

NOTES:

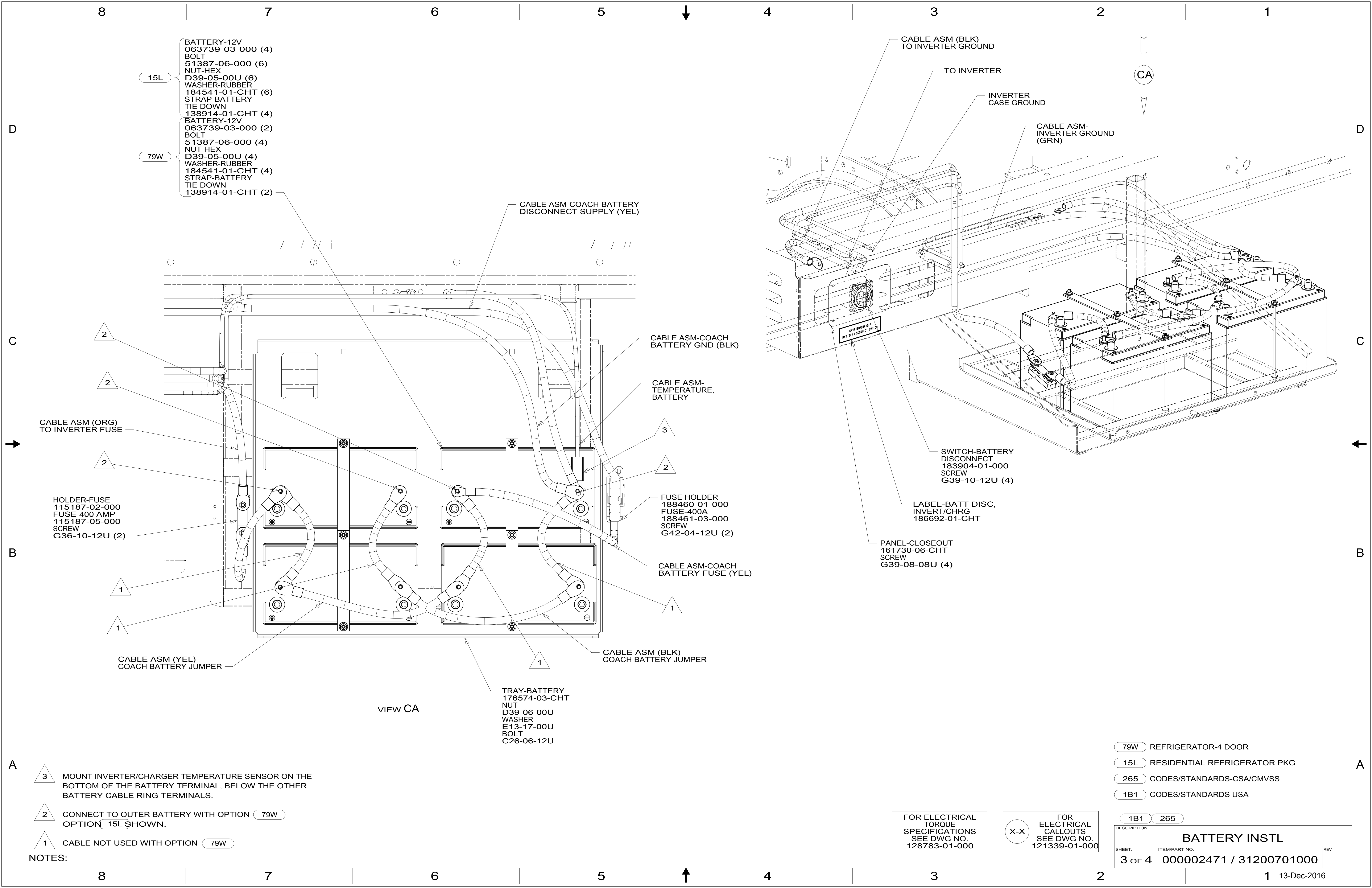
FOR ELECTRICAL
TORQUE
SPECIFICATIONS
SEE DWG NO.
128783-01-000

FOR ELECTRICAL
CALLOUTS
SEE DWG NO.
121339-01-000

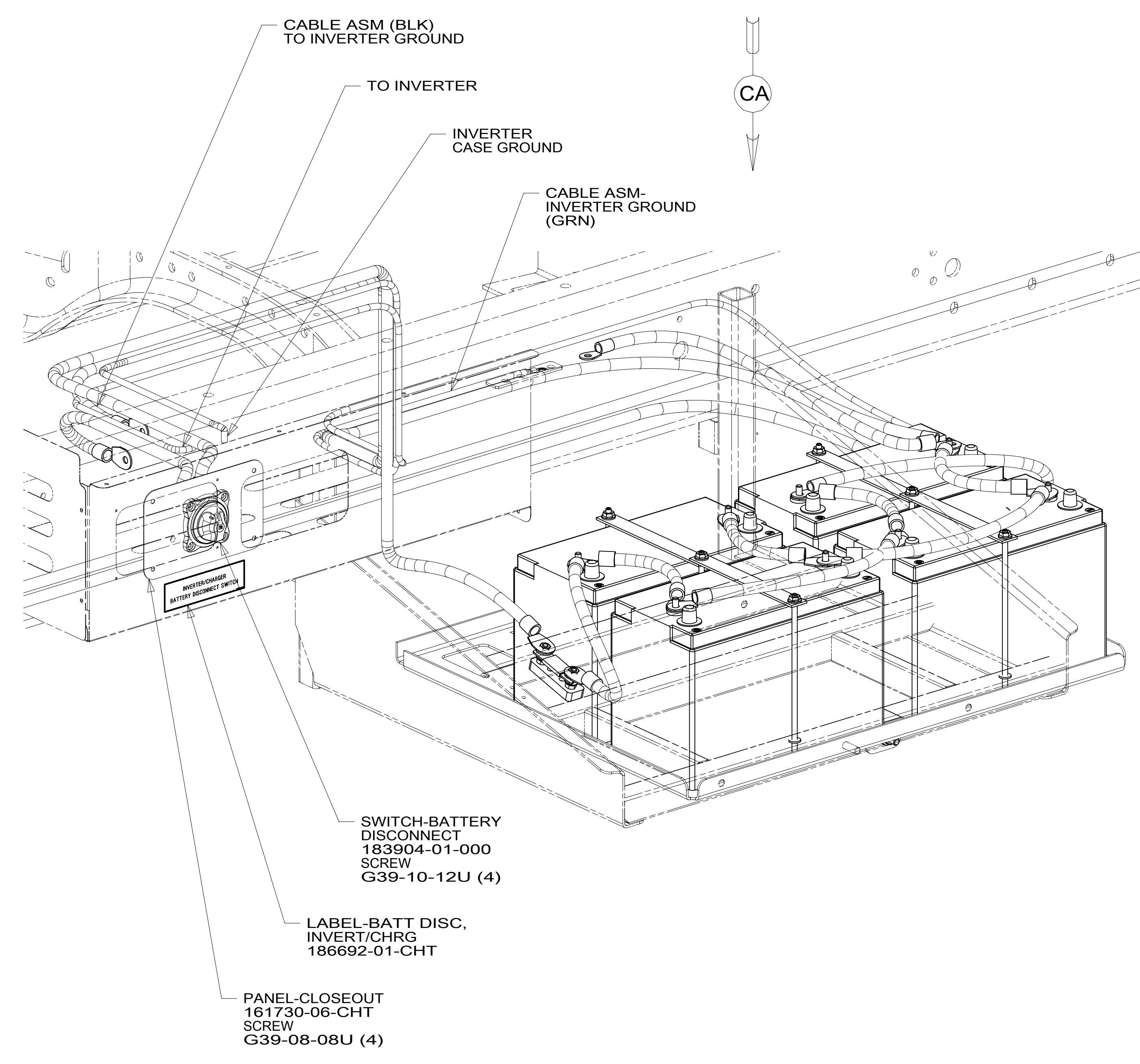
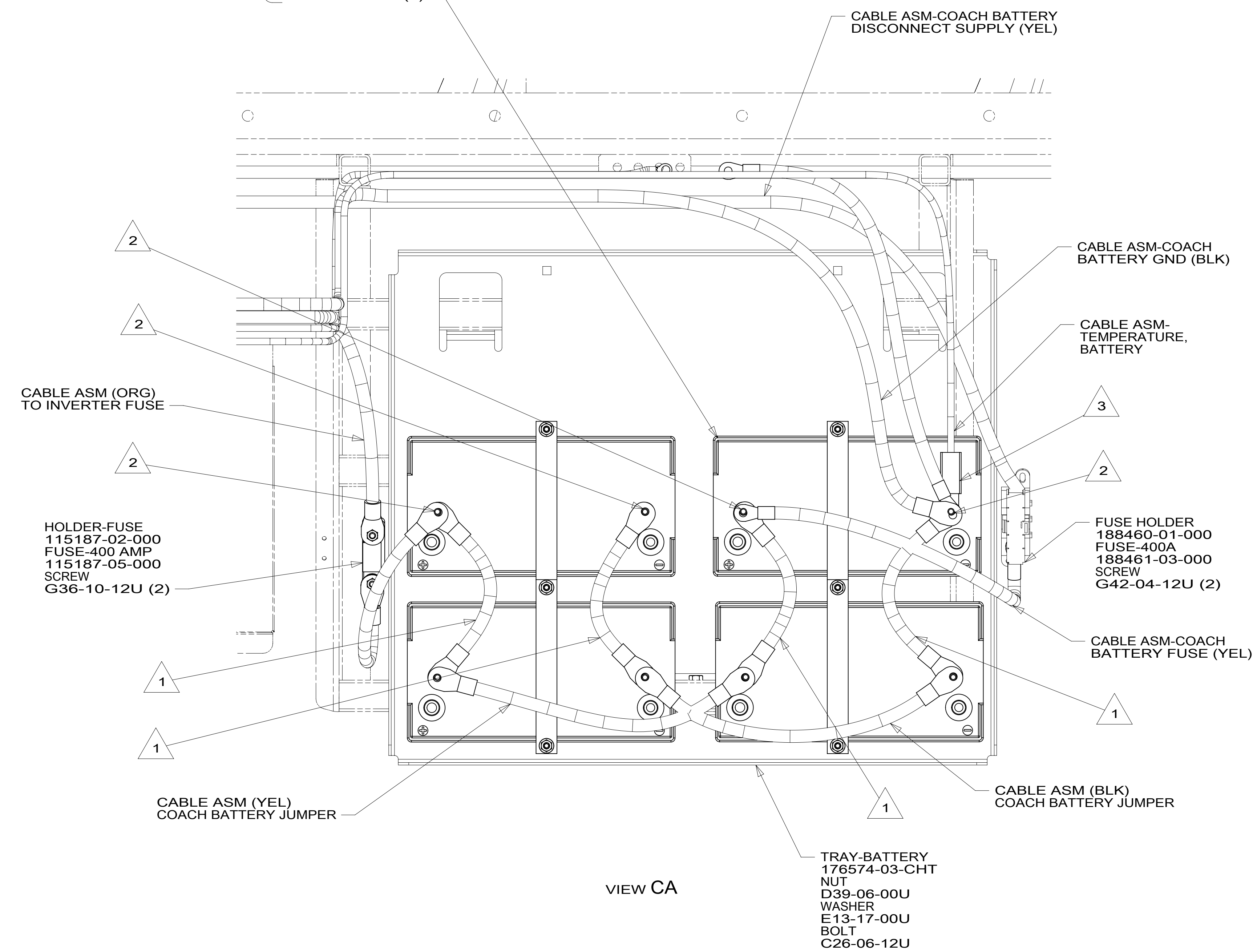
265 CODES/STANDARDS-CSA/CMVSS
1B1 CODES/STANDARDS USA

| | | | |
|----------------------|-------------------------|---------|--|
| DESCRIPTION: | | 1B1 265 | |
| BATTERY INSTL | | | |
| SHEET: | ITEM/PART NO: | REV | |
| 2 OF 4 | 000002471 / 31200701000 | | |

8 7 6 5 4 3 2 1 13-Dec-2016



- 15L BATTERY-12V
063739-03-000 (4)
BOLT
51387-06-000 (6)
NUT-HEX
D39-05-00U (6)
WASHER-RUBBER
184541-01-CHT (6)
STRAP-BATTERY
TIE DOWN
138914-01-CHT (4)
- 79W BATTERY-12V
063739-03-000 (2)
BOLT
51387-06-000 (4)
NUT-HEX
D39-05-00U (4)
WASHER-RUBBER
184541-01-CHT (4)
STRAP-BATTERY
TIE DOWN
138914-01-CHT (2)

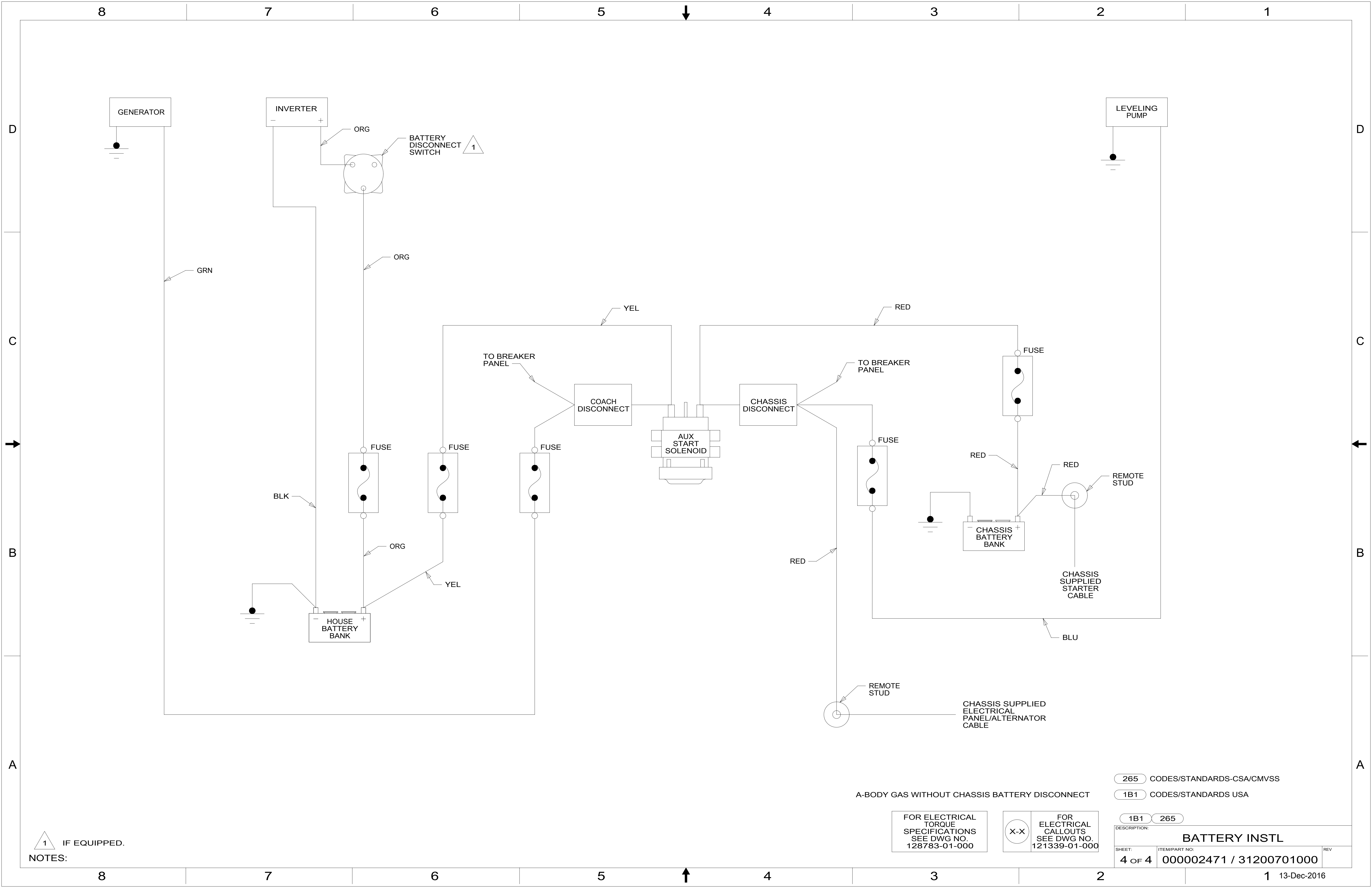


- NOTES:**
- 3 MOUNT INVERTER/CHARGER TEMPERATURE SENSOR ON THE BOTTOM OF THE BATTERY TERMINAL, BELOW THE OTHER BATTERY CABLE RING TERMINALS.
 - 2 CONNECT TO OUTER BATTERY WITH OPTION 79W
OPTION 15L SHOWN.
 - 1 CABLE NOT USED WITH OPTION 79W

FOR ELECTRICAL TORQUE SPECIFICATIONS SEE DWG NO. 128783-01-000

FOR ELECTRICAL CALLOUTS SEE DWG NO. 121339-01-000

| | |
|--------------------------------------|--|
| 79W | REFRIGERATOR-4 DOOR |
| 15L | RESIDENTIAL REFRIGERATOR PKG |
| 265 | CODES/STANDARDS-CSA/CMVSS |
| 1B1 | CODES/STANDARDS USA |
| 1B1 | 265 |
| DESCRIPTION: BATTERY INSTL | |
| SHEET: 3 OF 4 | ITEM/PART NO: 000002471 / 31200701000 |
| REV | |



NOTES:
 1 IF EQUIPPED.

A-BODY GAS WITHOUT CHASSIS BATTERY DISCONNECT

FOR ELECTRICAL TORQUE SPECIFICATIONS SEE DWG NO. 128783-01-000

FOR ELECTRICAL CALLOUTS SEE DWG NO. 121339-01-000

- 265 CODES/STANDARDS-CSA/CMVSS
- 1B1 CODES/STANDARDS USA

| | | |
|--------------------------------------|---|-----|
| DESCRIPTION: BATTERY INSTL | | |
| SHEET: 4 OF 4 | ITEM/PART NO: 000002471 / 31200701000 | REV |