

- (BLU)
4200 DROP
THRU RCP-BLANK WARDROBE
TO RCP-HALL
FROM RIGHT SIDE
(PUR)
2700 DROP
TO RCP-B WARDROBE
FROM RIGHT SIDE
(BRN)
3000 DROP
TO RCP-BDRM DESK
FROM RIGHT SIDE
(GLD)
2400 DROP
TO RCP-WASHER/DRYER

CLAMP
83610-02-000
SCREW
G39-10-12U

PANEL-STL,CLOSEOUT,ELECT
000005341 / 312290-01-CHT
SCREW
G39-08-12U (8)

SCREW
G39-06-24U (4)
CLAMP
10495-01-000 (2)
SCREW
G67-10-12U (2)

PANEL-STL.ACCESS,ELEC
000005365 / 312297-01-CHT
SCREW
G39-08-12U (5)

PANEL-STL.CLOSEOUT
000014318 / 312789-01-CHT
SCREW
G39-08-12U (7)

RCP-2 (BLU)
EXT COMPT

(MAIN)
3600 DROP
TO LOAD CENTER
(PUR)
13,500 DROP
THRU RCP-B UNDER LAV
THRU RCP-B SHOWER 3
THRU COMPONENT 1 & 2 RCP
THRU EXT ENT CTR TV RCP
TO LOAD CENTER
(BLU)
11,000 DROP
THRU RCP-BLANK LAV
THRU EXT RCP
THRU GFI GALLEY
TO LOAD CENTER

GENERATOR CABLE
ASMS FROM ATS

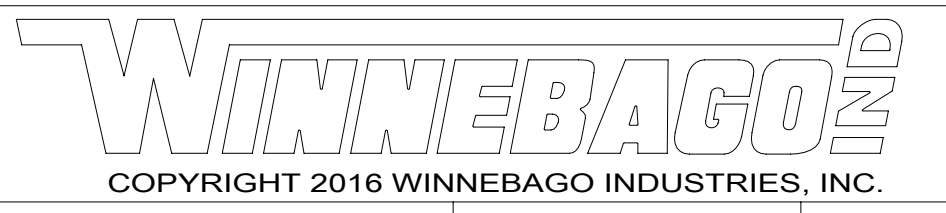
CABLE FROM GENERATOR
TO 4X4 BOX ABOVE FLOOR

1D3 ENTERTAIN CENTR/EXT TV-DVD

265 CODES/STANDARDS-CSA/CMVSS

1B1 CODES/STANDARDS USA

1B1 265



DSNR:	ALL DIMENSIONS ARE IN MILLIMETERS	
DFFR:	MATERIAL:	
UNSPECIFIED TOLERANCES:		
WHOLE DIM (X) :	3	
ONE-PLACE (X.X) :	1.5	
TWO-PLACE (X.XX) :	0.50	
ANGLE :	1°	
REFER TO ES0018 FOR FASTENER TIGHTENING GUIDELINES	WEIGHT: (LBS)	FIRST USED: 17 E35F

WIRING INSTL-BODY, 110V

SHEET:	ITEM/PART NO.:	REV:
1 OF 5	000002446 / 31200601000	

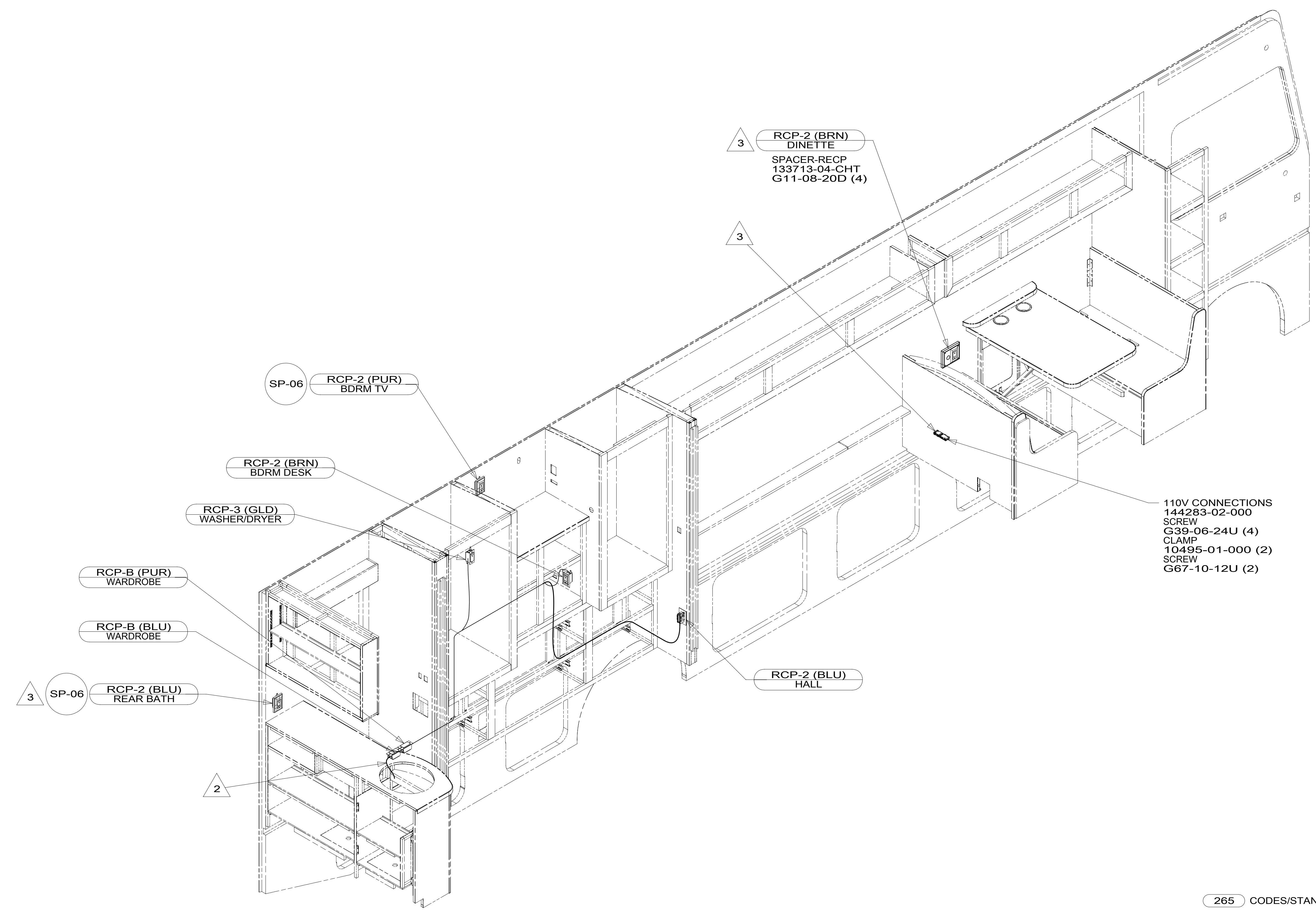
FOR ELECTRICAL TORQUE SPECIFICATIONS SEE DWG NO. 128783-01-000

FOR ELECTRICAL CALLOUTS SEE DWG NO. 121339-01-000

- NOTES:
- 4 WIRE ROUTED THROUGH FLOOR IN THIS AREA.
 - 3 SEE LOAD CENTER/ATS ASM FOR ADDITIONAL INFORMATION.
 2. WIRES ROUTED UNDER FLOOR.
 1. AT MINIMUM ALL WIRES TO BE SUPPORTED AND SECURED PER CODE REQUIREMENTS. USE CLAMP 10495 OR 10497 OR WIRE TIE 8343 OR 108046 AND SCREW G67-XX-XXX OR G56-XX-XXX AS APPROPRIATE FOR INSTALLATION.

8 7 6 5 4 3 2 1

D
C
B
A



- 3 WIRE ROUTED IN SIDEWALL.
- 2 WIRE ROUTES THRU FLOOR IN THIS AREA.

1. AT MINIMUM ALL WIRES TO BE SUPPORTED AND SECURED PER CODE REQUIREMENTS. USE CLAMP 10495 OR 10497 OR WIRE TIE 8343 OR 108046 AND SCREW G67-XX-XXX OR G56-XX-XXX AS APPROPRIATE FOR INSTALLATION.

NOTES:

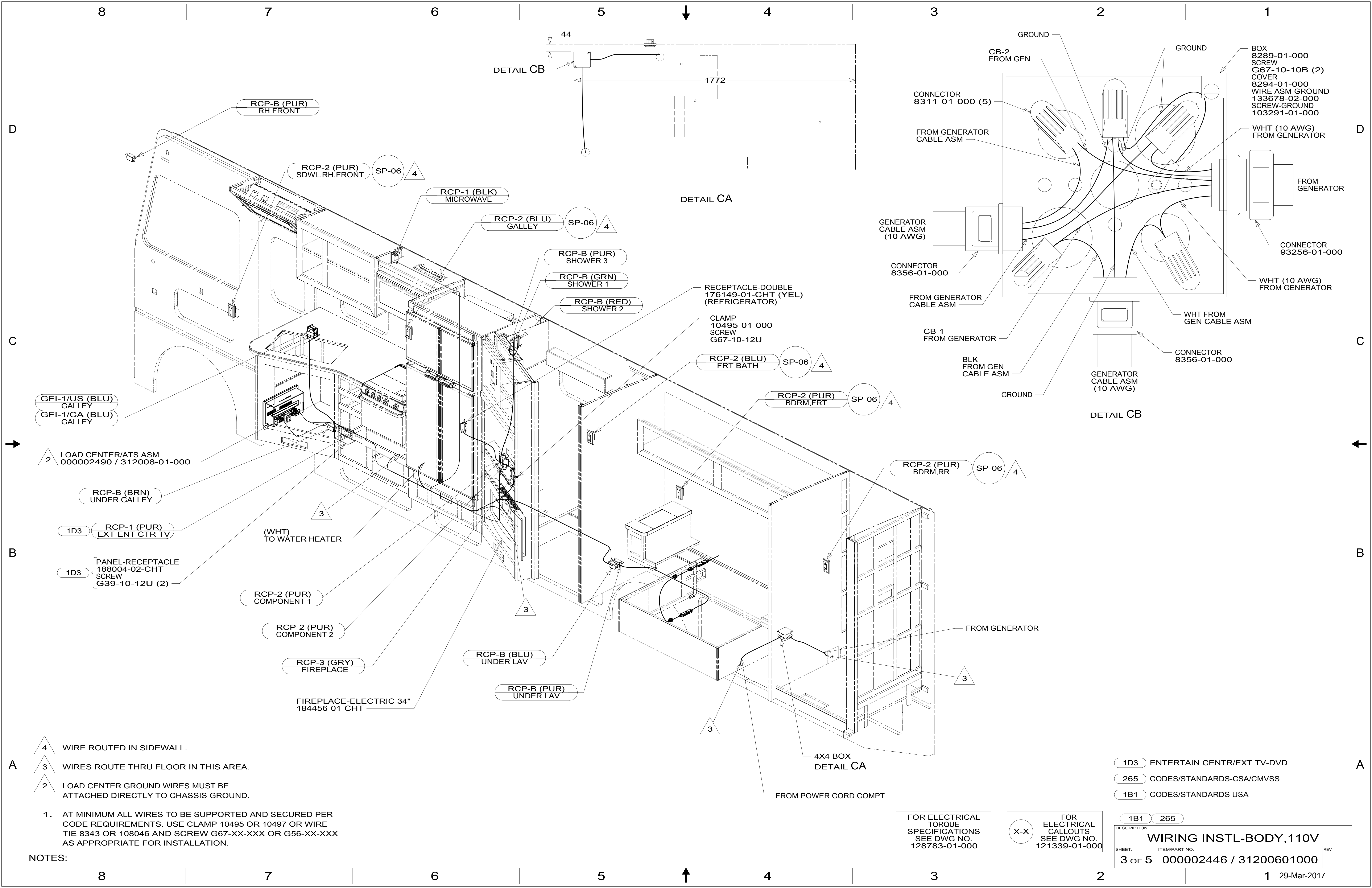
265 CODES/STANDARDS-CSA/CMVSS
 1B1 CODES/STANDARDS USA

FOR ELECTRICAL TORQUE SPECIFICATIONS SEE DWG NO. 128783-01-000

X-X FOR ELECTRICAL CALLOUTS SEE DWG NO. 121339-01-000

DESCRIPTION:		1B1	265
WIRING INSTL-BODY, 110V			
SHEET:	ITEM/PART NO.:	REV	
2 OF 5	000002446 / 31200601000		

8 7 6 5 4 3 2 1 29-Mar-2017



RCP-B (PUR)
RH FRONT

RCP-2 (PUR)
SDWL,RH,FRONT

RCP-1 (BLK)
MICROWAVE

RCP-2 (BLU)
GALLEY

RCP-B (PUR)
SHOWER 3

RCP-B (GRN)
SHOWER 1

RCP-B (RED)
SHOWER 2

RECEPTACLE-DOUBLE
176149-01-CHT (YEL)
(REFRIGERATOR)

CLAMP
10495-01-000
SCREW
G67-10-12U

RCP-2 (BLU)
FRT BATH

RCP-2 (PUR)
BDRM,FRT

RCP-2 (PUR)
BDRM,RR

GFI-1/US (BLU)
GALLEY
GFI-1/CA (BLU)
GALLEY

LOAD CENTER/ATS ASM
000002490 / 312008-01-000

RCP-B (BRN)
UNDER GALLEY

1D3 RCP-1 (PUR)
EXT ENT CTR TV

1D3 PANEL-RECEPTACLE
188004-02-CHT
SCREW
G39-10-12U (2)

RCP-2 (PUR)
COMPONENT 1

RCP-2 (PUR)
COMPONENT 2

RCP-3 (GRY)
FIREPLACE

FIREPLACE-ELECTRIC 34"
184456-01-CHT

RCP-B (BLU)
UNDER LAV

RCP-B (PUR)
UNDER LAV

4X4 BOX
DETAIL CA

FROM POWER CORD COMPT

FROM GENERATOR

DETAIL CB

DETAIL CA

DETAIL CB

- 4 WIRE ROUTED IN SIDEWALL.
- 3 WIRES ROUTE THRU FLOOR IN THIS AREA.
- 2 LOAD CENTER GROUND WIRES MUST BE ATTACHED DIRECTLY TO CHASSIS GROUND.

1. AT MINIMUM ALL WIRES TO BE SUPPORTED AND SECURED PER CODE REQUIREMENTS. USE CLAMP 10495 OR 10497 OR WIRE TIE 8343 OR 108046 AND SCREW G67-XX-XXX OR G56-XX-XXX AS APPROPRIATE FOR INSTALLATION.

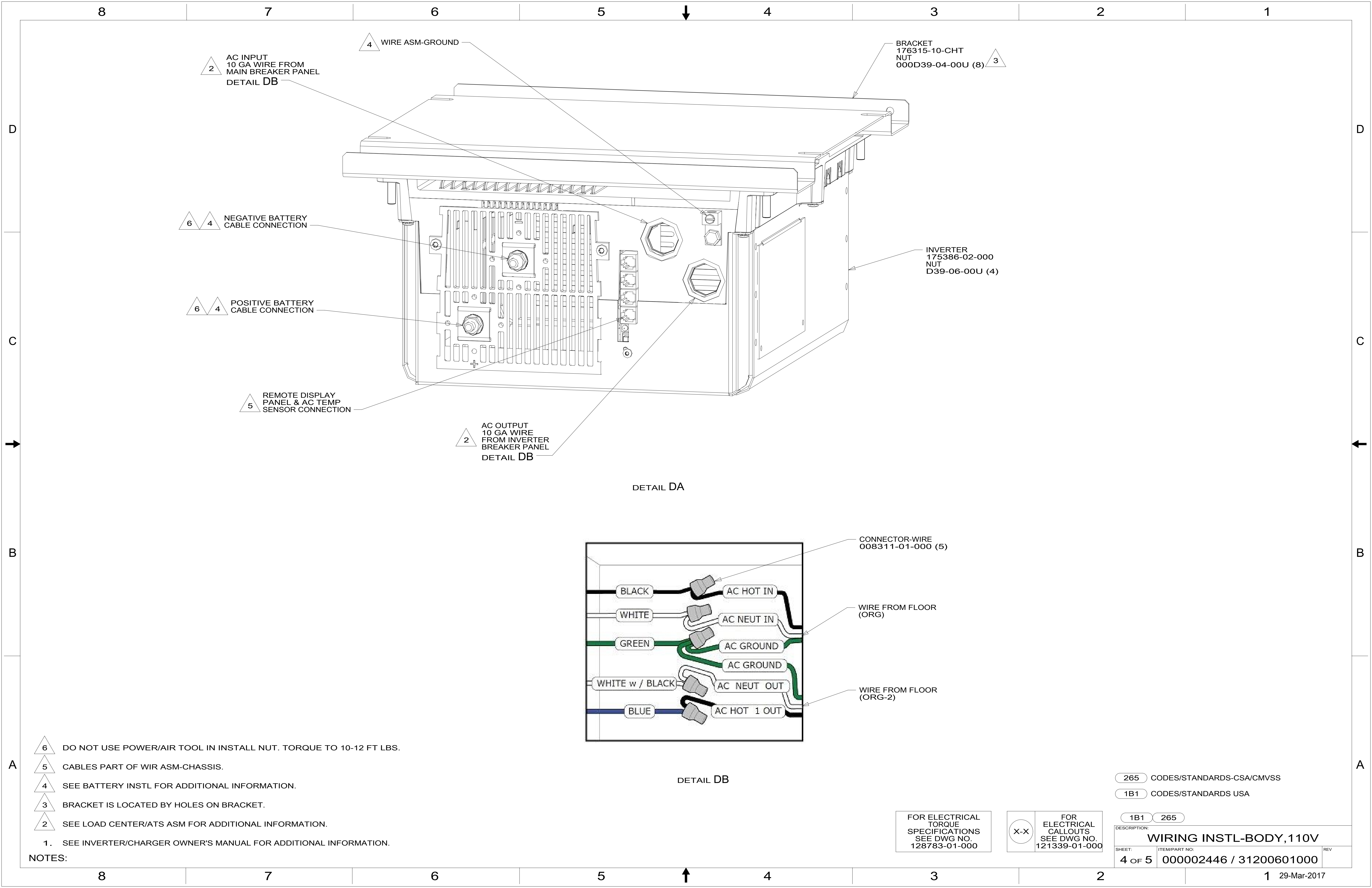
NOTES:

FOR ELECTRICAL
TORQUE
SPECIFICATIONS
SEE DWG NO.
128783-01-000

X-X
FOR ELECTRICAL
CALLOUTS
SEE DWG NO.
121339-01-000

- 1D3 ENTERTAIN CENTR/EXT TV-DVD
- 265 CODES/STANDARDS-CSA/CMVSS
- 1B1 CODES/STANDARDS USA

DESCRIPTION:		1B1 265	
WIRING INSTL-BODY, 110V			
SHEET:	ITEM/PART NO.:	REV:	
3 OF 5	000002446 / 31200601000		



2 AC INPUT
10 GA WIRE FROM
MAIN BREAKER PANEL
DETAIL DB

4 WIRE ASM-GROUND

BRACKET
176315-10-CHT
NUT
000D39-04-00U (8) 3

6 4 NEGATIVE BATTERY
CABLE CONNECTION

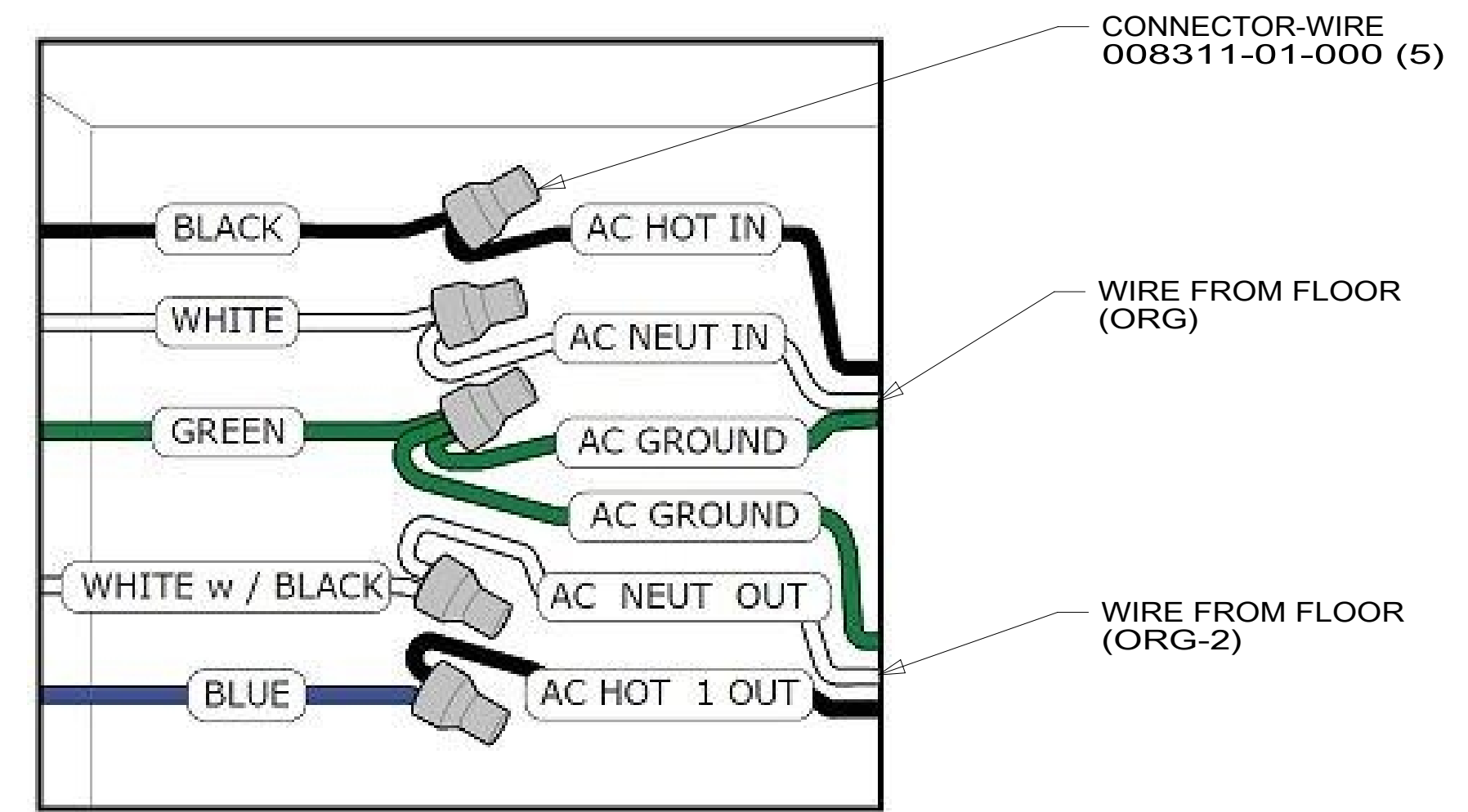
6 4 POSITIVE BATTERY
CABLE CONNECTION

INVERTER
175386-02-000
NUT
D39-06-00U (4)

5 REMOTE DISPLAY
PANEL & AC TEMP
SENSOR CONNECTION

2 AC OUTPUT
10 GA WIRE FROM INVERTER
BREAKER PANEL
DETAIL DB

DETAIL DA



DETAIL DB

- 6 DO NOT USE POWER/AIR TOOL IN INSTALL NUT. TORQUE TO 10-12 FT LBS.
- 5 CABLES PART OF WIR ASM-CHASSIS.
- 4 SEE BATTERY INSTL FOR ADDITIONAL INFORMATION.
- 3 BRACKET IS LOCATED BY HOLES ON BRACKET.
- 2 SEE LOAD CENTER/ATS ASM FOR ADDITIONAL INFORMATION.

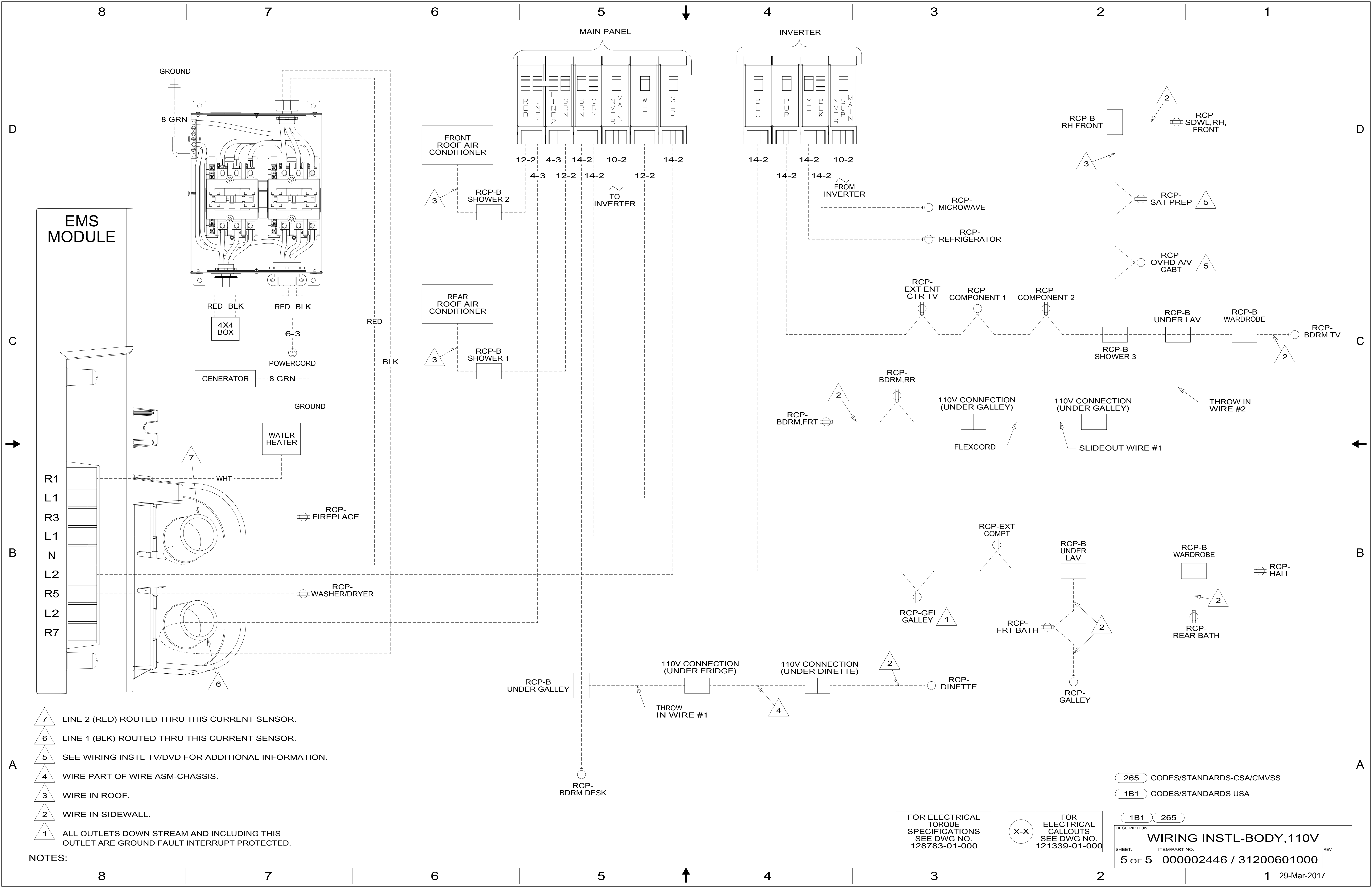
NOTES:
1. SEE INVERTER/CHARGER OWNER'S MANUAL FOR ADDITIONAL INFORMATION.

265 CODES/STANDARDS-CSA/CMVSS
1B1 CODES/STANDARDS USA

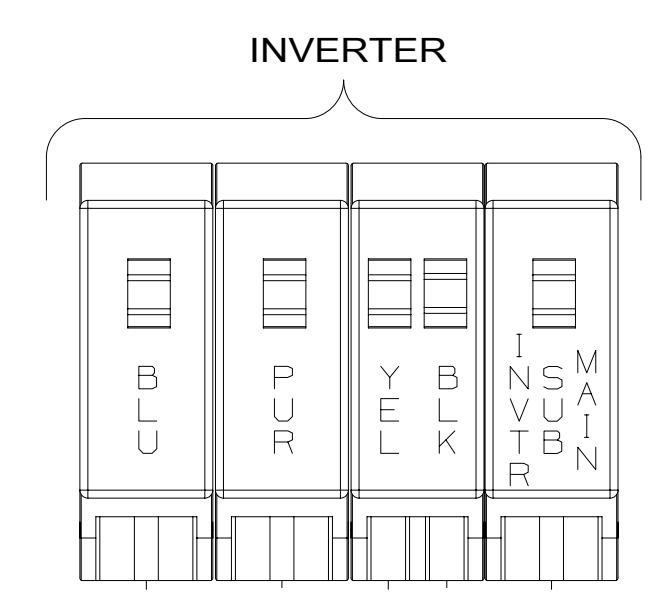
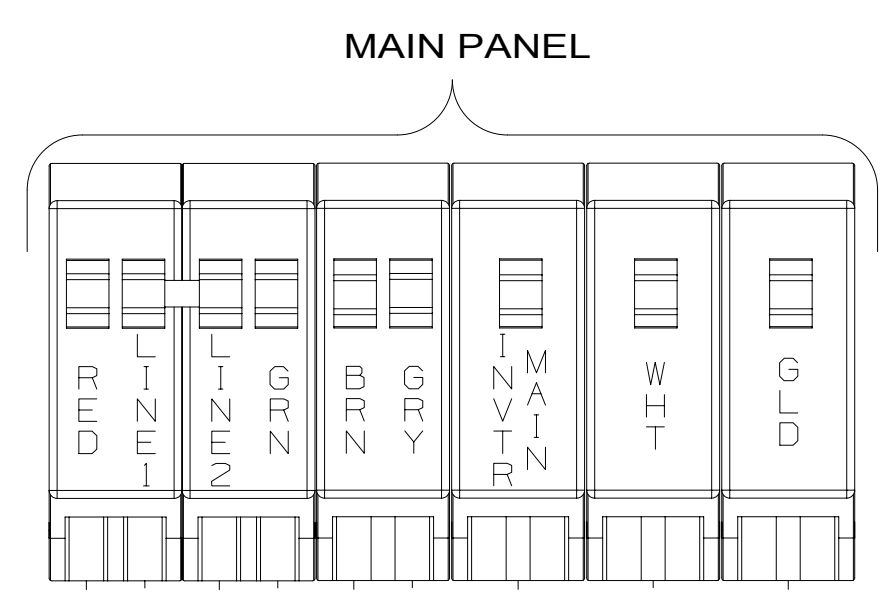
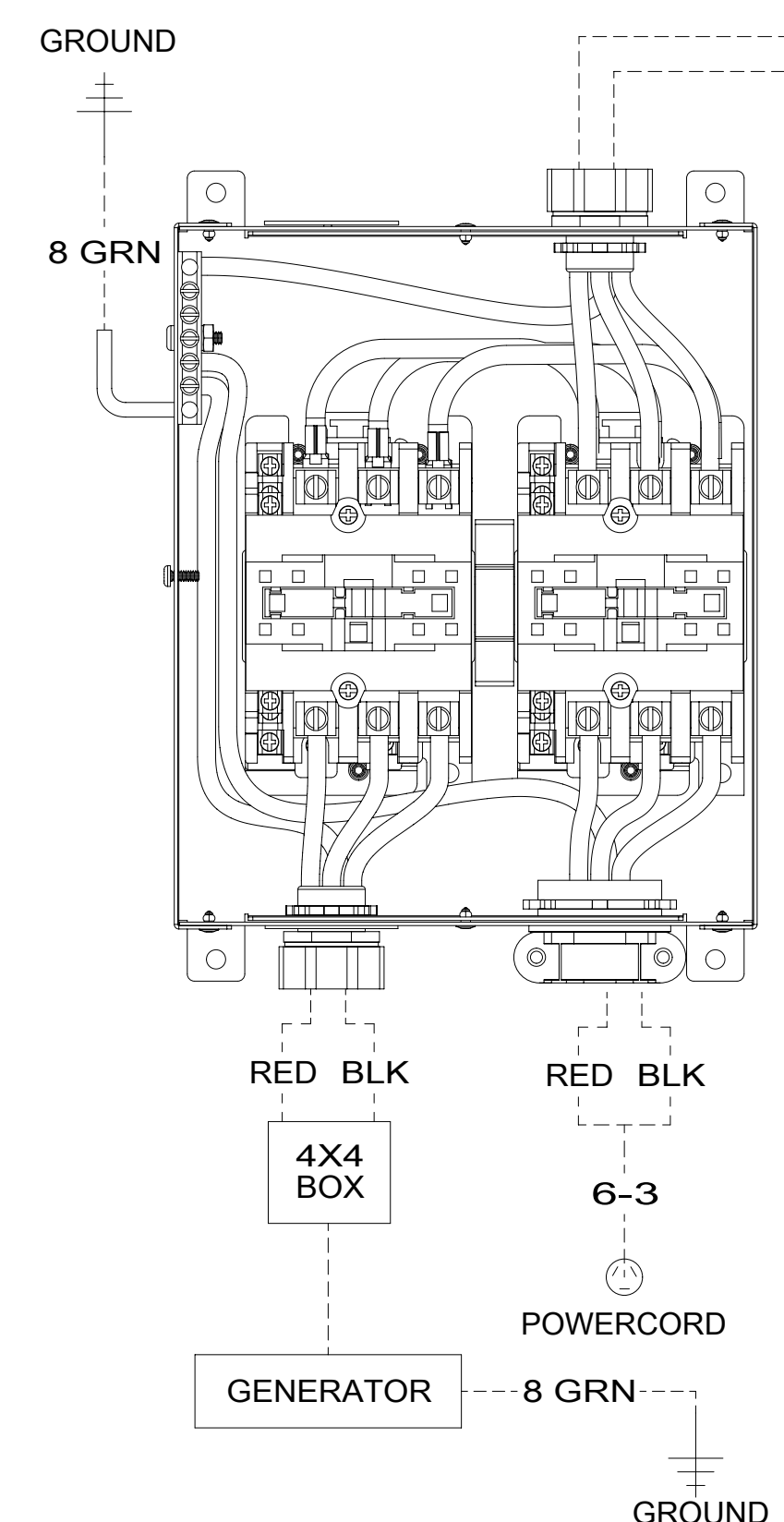
FOR ELECTRICAL
TORQUE
SPECIFICATIONS
SEE DWG NO.
128783-01-000

X-X FOR
ELECTRICAL
CALLOUTS
SEE DWG NO.
121339-01-000

DESCRIPTION:	1B1 265	
WIRING INSTL-BODY, 110V		
SHEET:	ITEM/PART NO:	REV
4 OF 5	000002446 / 31200601000	



EMS MODULE



- NOTES:**
- 7 LINE 2 (RED) ROUTED THRU THIS CURRENT SENSOR.
 - 6 LINE 1 (BLK) ROUTED THRU THIS CURRENT SENSOR.
 - 5 SEE WIRING INSTL-TV/DVD FOR ADDITIONAL INFORMATION.
 - 4 WIRE PART OF WIRE ASM-CHASSIS.
 - 3 WIRE IN ROOF.
 - 2 WIRE IN SIDEWALL.
 - 1 ALL OUTLETS DOWN STREAM AND INCLUDING THIS OUTLET ARE GROUND FAULT INTERRUPT PROTECTED.

FOR ELECTRICAL TORQUE SPECIFICATIONS SEE DWG NO. 128783-01-000

FOR ELECTRICAL CALLOUTS SEE DWG NO. 121339-01-000

265 CODES/STANDARDS-CSA/CMVSS
1B1 CODES/STANDARDS USA

DESCRIPTION: WIRING INSTL-BODY, 110V	
SHEET: 5 OF 5	ITEM/PART NO.: 000002446 / 31200601000
REV 1 29-Mar-2017	