

- 5 LOAD CENTER AND ATS GROUND WIRES MUST BE ATTACHED DIRECTLY TO CHASSIS GROUND.
- 4 SEE SHEET 4 FOR ADDITIONAL INFORMATION.
- 3 DO NOT HI-POT INLET. LED LIGHT MAY FAIL.

2. ALL 110V WIRES TO BE CLAMPED WITH CLAMP 10497-05-000 WITHIN 200MM OF OUTLET BOXES, USE SCREW G67-10-12B.
1. AT MINIMUM ALL WIRES TO BE SUPPORTED AND SECURED PER CODE REQUIREMENTS. USE CLAMP 10495 OR 10497 OR WIRE TIE 8343 OR 108046 AND SCREW G67-XX-XXX OR G56-XX-XXX AS APPROPRIATE FOR INSTALLATION.

NOTES:

RECEPTACLE ASM-GFI,US-20A
000120177 / 322738-01-XXX (1B1)
RECEPTACLE ASM-GFI,CAN-20A
000120178 / 322739-01-XXX (265)
(WHT) (HEATER)
BRACKET-RCP
188004-03-CHT
SCREW
G67-10-10U (2)

FOR ELECTRICAL TORQUE SPECIFICATIONS SEE DWG NO. 128783-01-000

FOR ELECTRICAL CALLOUTS SEE DWG NO. 121339-01-000

- 12D ELECTRICAL SYSTEM 30 AMP
- 265 CODES/STANDARDS-CSA/CMVSS
- 1B1 CODES/STANDARDS USA

1B1 265 12D

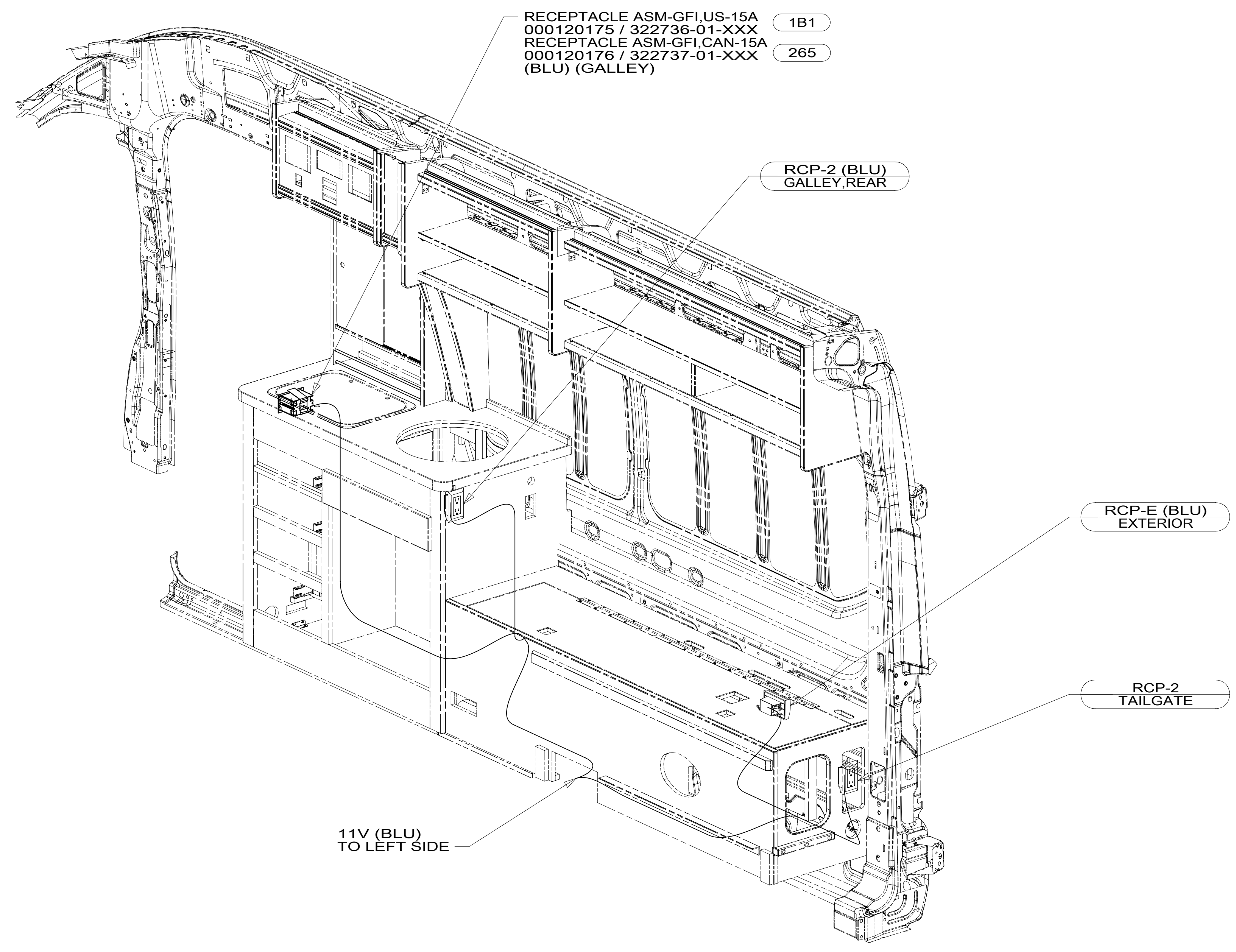


DSNR:	ALL DIMENSIONS ARE IN MILLIMETERS	
DFFR:	MATERIAL:	
UNSPECIFIED TOLERANCES:	WEIGHT: (LBS)	FIRST USED:
WHOLE DIM (X) : 3		17 848P
ONE-PLACE (X.X) : 1.5		
TWO-PLACE (X.XX) : 0.50		
ANGLE : 1°		

REFER TO ES0018 FOR FASTENER TIGHTENING GUIDELINES

DESCRIPTION: **WIRING INSTL-BODY, 110V**

SHEET: 1 OF 4 ITEM/PART NO: 000002032 / 31200001000 REF: 1 05-Jul-2017



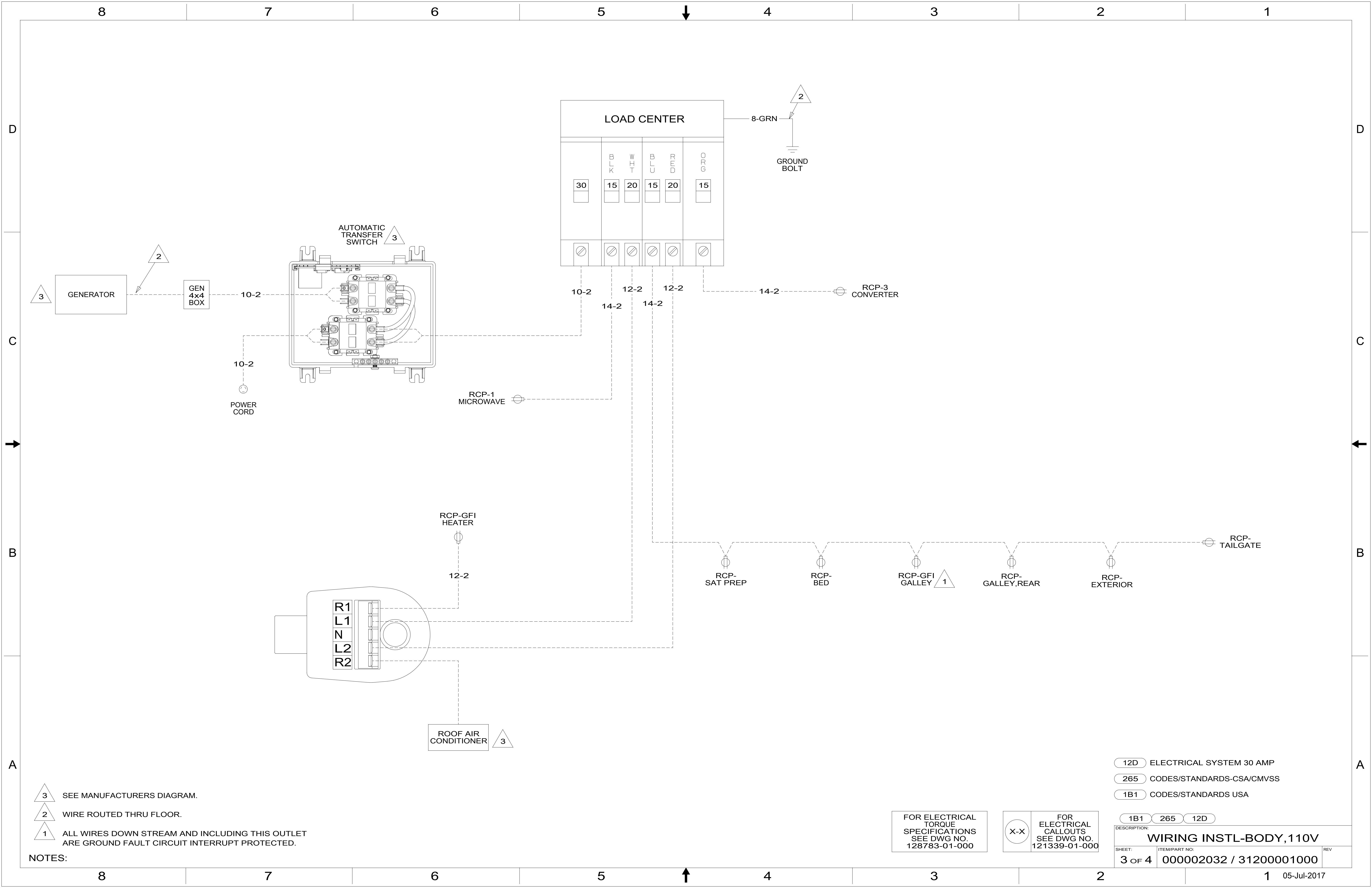
- NOTES:
1. AT MINIMUM ALL WIRES TO BE SUPPORTED AND SECURED PER CODE REQUIREMENTS. USE CLAMP 10495 OR 10497 OR WIRE TIE 8343 OR 108046 AND SCREW G67-XX-XXX OR G56-XX-XXX AS APPROPRIATE FOR INSTALLATION.
 2. ALL 110V WIRES TO BE CLAMPED WITH CLAMP 10497-05-000 WITHIN 200MM OF OUTLET BOXES, USE SCREW G67-10-12B.

FOR ELECTRICAL TORQUE SPECIFICATIONS SEE DWG NO. 128783-01-000

FOR ELECTRICAL CALLOUTS SEE DWG NO. 121339-01-000

- 12D ELECTRICAL SYSTEM 30 AMP
- 265 CODES/STANDARDS-CSA/CMVSS
- 1B1 CODES/STANDARDS USA

DESCRIPTION: WIRING INSTL-BODY, 110V		
SHEET: 2 OF 4	ITEM/PART NO: 000002032 / 31200001000	REV



NOTES:

- 3 SEE MANUFACTURERS DIAGRAM.
- 2 WIRE ROUTED THRU FLOOR.
- 1 ALL WIRES DOWN STREAM AND INCLUDING THIS OUTLET ARE GROUND FAULT CIRCUIT INTERRUPT PROTECTED.

FOR ELECTRICAL TORQUE SPECIFICATIONS SEE DWG NO. 128783-01-000

FOR ELECTRICAL CALLOUTS SEE DWG NO. 121339-01-000

- 12D ELECTRICAL SYSTEM 30 AMP
- 265 CODES/STANDARDS-CSA/CMVSS
- 1B1 CODES/STANDARDS USA

DESCRIPTION: WIRING INSTL-BODY, 110V		
SHEET: 3 OF 4	ITEM/PART NO.: 000002032 / 31200001000	REV



RED	1B1	136135-07-041
	265	136136-07-041
ORG	1B1	136131-16-020
	265	136134-16-020
BLK	1B1	136131-06-040
	265	136134-06-040
BLU	1B1	136131-02-240
	265	136134-02-240
WHT	1B1	136135-09-035
	265	136136-09-035
MAIN	1B1	136137-01-020
	265	136138-01-020
GROUND MAIN		136145-05-035
MAIN EXTENSION	1B1	136137-01-010
	265	136138-01-010
CORD-POWER ASM		183140-01-000
GROUND ATS		136145-05-035
GENERATOR EXTENSION	1B1	136137-01-030
	265	136138-01-030



D
C
B
A

D
C
B
A

- 4 DO NOT HI-POT POWER CORD, LED INDICATOR LIGHT MAY FAIL.
3. SEE WIRING INSTL-BODY, 12V FOR ADDITIONAL INFORMATION.
2. SECURE WIRES TO BACKSIDE OF LOAD CENTER WITH WIRE TIE 116673-01-000.
1. ALL GROUNDS WIRES TO BE COVERED WITH TUBING 8041-02-000.

NOTES:

265 CODES/STANDARDS-CSA/CMVSS
1B1 CODES/STANDARDS USA

FOR ELECTRICAL TORQUE SPECIFICATIONS SEE DWG NO. 128783-01-000

FOR ELECTRICAL CALLOUTS SEE DWG NO. 121339-01-000

1B1 265

DESCRIPTION:
WIRING INSTL-BODY, 110V

SHEET: 4 OF 4 ITEM/PART NO: 000002032 / 31200001000 REV

