

INVERTER SUPPLIED WITH REMOTE PANEL.
SEND PANEL TO MANUFACTURING LINE.

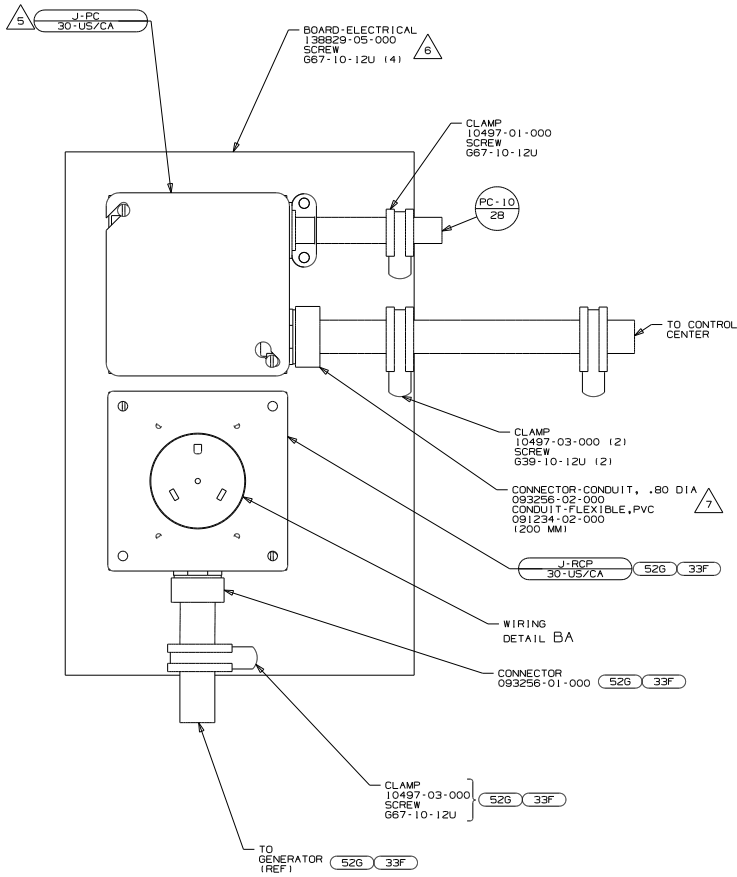
1. ALL GROUND WIRES TO BE COVERED WITH TUBING 8041-02-000.

FOR ELECTRICAL TORQUE SPECIFICATIONS SEE DWG NO. 128783-01-000

FOR ELECTRICAL CALLOUTS SEE DWG NO. 121339-01-000

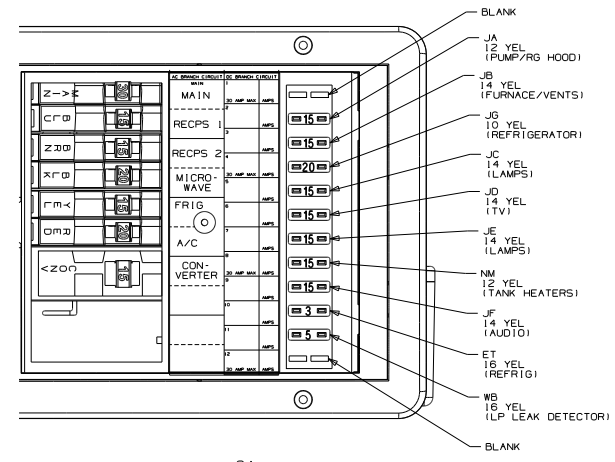
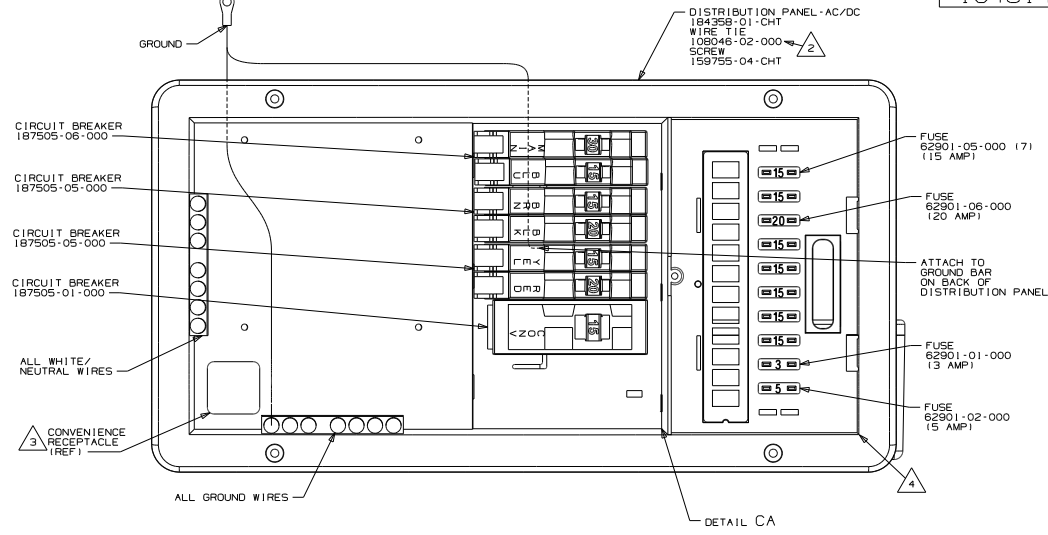
265 CODES/STANDARDS-CSA/CMVSS
1B1 CODES/STANDARDS USA
1B1 265

FIRST USED
16 500-SERIES
DO NOT SCALE DRAWING
TITLE: LOAD CENTER/ATS ASM
SHEET 2 PART NO 194814 REV



- 7 SECURE CONDUIT TO POWER CORD WITH TAPE 8363-01-000 FOR TRANSPORTATION PURPOSES.
- 6 SCREW INTO BACKSIDE OF BOARD THRU PANEL DURING INSTALLATION.
- 5 CONNECT BLK TO BLK., WHT TO WHT., AND GRNDS TO GRNDS.
- 4 SEE WIRING INSTL-BODY, I2V FOR ADDITIONAL INFORMATION.
- 3 CONNECT BLACK WIRE FROM CONVENIENCE RECEPTACLE TO DEDICATED CIRCUIT BREAKER.
- 2 ATTACH TO UNUSED SCREW HOLE ON BACK SIDE OF PANEL TO SECURE WIRES.

NOTES:
1. ALL GROUND WIRES TO BE COVERED WITH TUBING 8041-02-000.



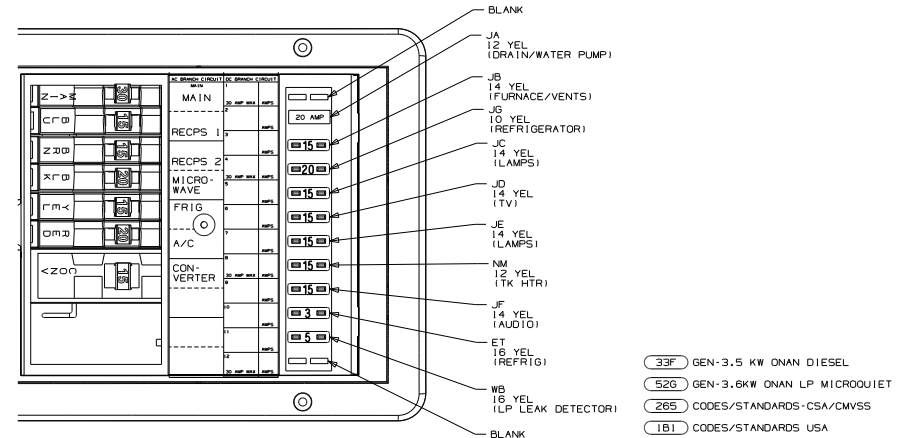
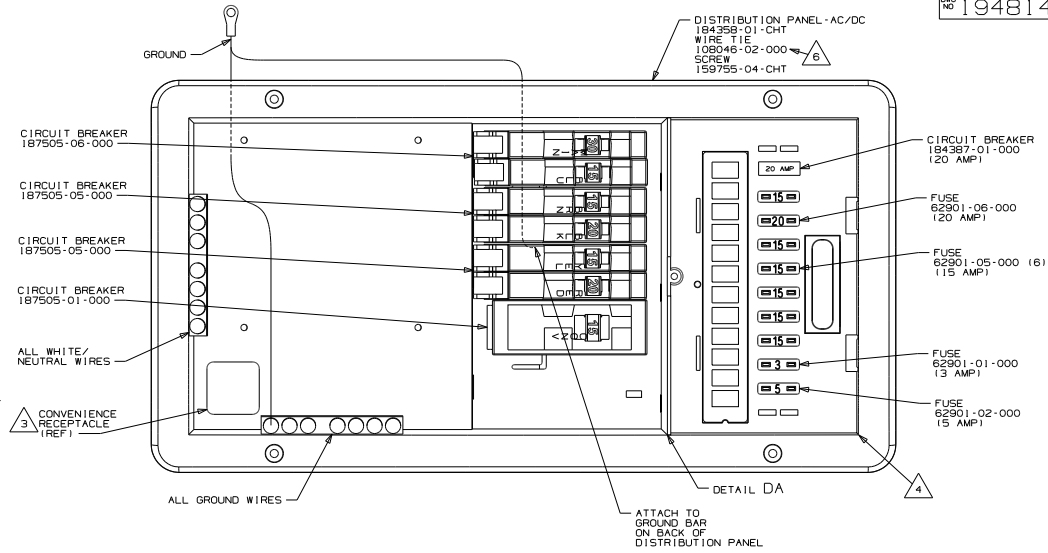
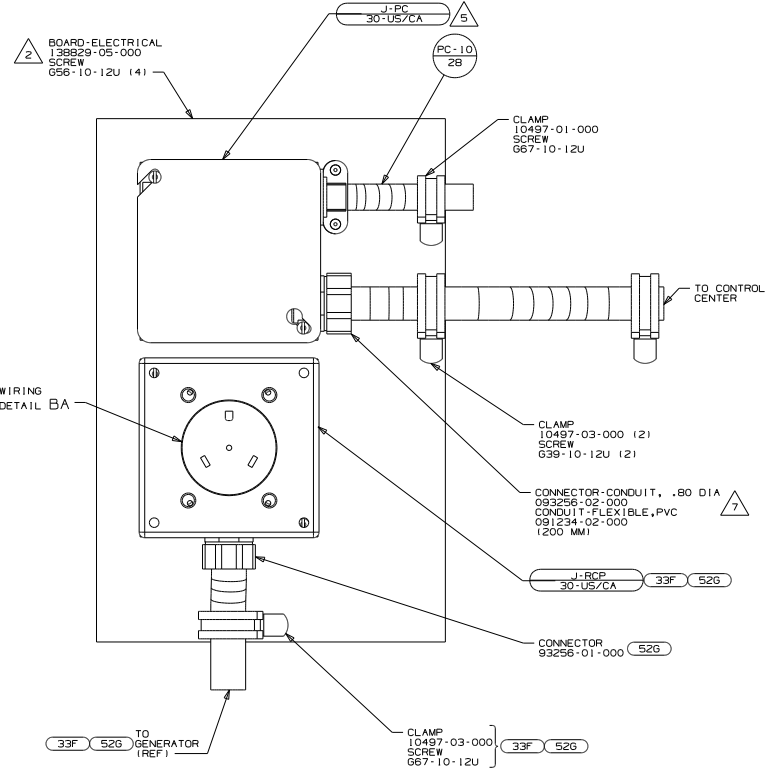
- 33F GEN-3.5 KW ONAN DIESEL
- 52G GEN-3.6KW ONAN LP MICROUJET
- 265 CODES/STANDARDS-CSA/CMVSS
- 1B1 CODES/STANDARDS USA

16 500-SERIES
DO NOT SCALE DRAWING
TITLE: LOAD CENTER/ATS ASM
SHEET 3 PART NO 194814

FOR ELECTRICAL TORQUE SPECIFICATIONS SEE DWG NO. 128783-01-000

FOR ELECTRICAL CALLOUTS SEE DWG NO. 121339-01-000





- 7 SECURE CONDUIT TO POWER CORD WITH TAPE 8363-01-000 FOR TRANSPORTATION PURPOSES.
- 6 ATTACH TO UNUSED SCREW HOLE ON BACK SIDE OF PANEL TO SECURE WIRES.
- 5 CONNECT BLK TO BLK, WHT TO WHT, AND GRNDS TO GRNDS.
- 4 SEE WIRING INSTL-BODY,12V FOR ADDITIONAL INFORMATION.
- 3 CONNECT BLACK WIRE FROM CONVENIENCE RECEPTACLE TO DEDICATED CIRCUIT BREAKER.
- 2 SCREW INTO BACKSIDE OF BOARD THRU PANEL DURING INSTALLATION.

NOTES:
1. ALL GROUND WIRES TO BE COVERED WITH TUBING 8041-02-000.

FOR ELECTRICAL
TORQUE
SPECIFICATIONS
SEE DWG NO.
128783-01-000

FOR
ELECTRICAL
CALLOUTS
SEE DWG NO.
121339-01-000

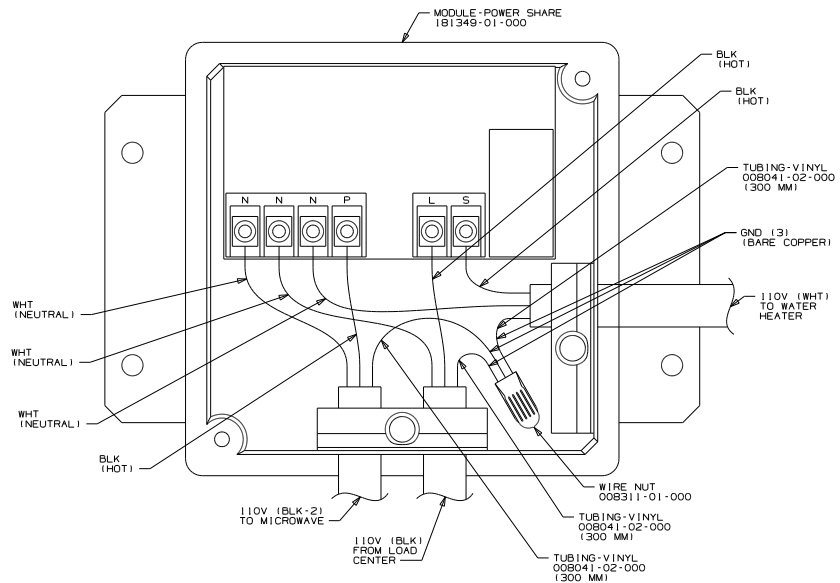
16 500-SERIES

DO NOT SCALE DRAWING

TITLE:
LOAD CENTER/ATS ASM

SHEET 4

194814



NOTES:
1. ALL GROUND WIRES TO BE COVERED WITH TUBING B041-02-000.

- 538 WTR HTR-66AL ELECTRIC/LP GAS
- 265 CODES/STANDARDS-CSA/CMVSS
- 1B1 CODES/STANDARDS USA

1B1 265 538

16 500-SERIES

DO NOT SCALE DRAWING

TITLE: LOAD CENTER/ATS ASM

SHEET 5 PART NO 194814 REV

FOR ELECTRICAL TORQUE SPECIFICATIONS SEE DWG NO. 128783-01-000

FOR ELECTRICAL CALLOUTS SEE DWG NO. 121339-01-000

