

	R45RL	ITEM
CABLE ASM (YEL) FROM COACH BATTERY FUSE TO STUD-JUMP START,RED	175207-52-076	1
CABLE ASM (YEL) FROM STUD-JUMP START,RED TO COACH SIDE OF AUX START SOLENOID	175207-52-003	2
CABLE ASM (ORG) FROM COACH BATTERY TO INVERTER FUSE	175207-66-005	3
CABLE ASM (BLK) FROM STUD-JUMP START,BLK TO FRAME RAIL GROUND	175211-01-009	4
CABLE ASM (ORG) FROM INVERTER FUSE TO INVERTER DISCONNECT	175207-67-024	5
CABLE ASM (ORG) FROM INVERTER DISCONNECT TO INVERTER	175207-65-004	17
CABLE ASM (BLK) FROM BATTERY TO INVERTER	175211-01-027	6
CABLE ASM (BLK) FROM COACH BATTERY TO FRAME RAIL GROUND	175211-02-075	7
CABLE ASM (PUR) FROM DISCONNECT SOLENOID TO CHASSIS FUSE PANEL	175207-15-010	8
CABLE ASM (PUR) FROM BATTERY SIDE OF DISCONNECT SOLENOID TO CHASSIS BATTERY FUSE	175207-35-007	9
CABLE ASM (BLU) FROM CHASSIS DISCONNECTED POWER FUSE TO LEVELING SYSTEM POWER	141416-26-120	10
CABLE ASM (BLK) FROM LEVELING SYSTEM TO FRAME RAIL GROUND	133567-11-004	1
CABLE ASM (GRN) FROM BAT DISC RELAY TO PASS THRU STUD	175207-42-143	11
CABLE ASM (GRN) FROM PASS THRU STUD TO GENERATOR	175207-42-031	2
CABLE ASM (BLK) FROM GENERATOR TO FRAME RAIL GROUND	175211-02-022	2
CABLE ASM (YEL) JUMPER BETWEEN POSITIVE POSTS ON COACH BATTERY	141417-52-004	12
	141417-51-002 (4)	13
CABLE ASM (BLK) JUMPER BETWEEN NEGATIVE POSTS ON COACH BATTERY	133568-12-004	14
	133568-11-002 (4)	15
CABLE ASM (RED) JUMPER BETWEEN POSITIVE POSTS IN LEFT FRONT COMPT	141417-32-002	3
CABLE ASM-TEMPERATURE,BATTERY	175385-03-000	16
CABLE ASM (YEL) FROM BATTERY TO BATTERY FUSE	175207-52-007	18
CABLE ASM (PUR) FROM BATTERY TO BATTERY FUSE	CHASSIS SUPPLIED	19
CABLE ASM (YEL) FROM COACH DISCONNECT TO MULTIPLEX BREAKER	141415-57-004	20
CABLE ASM (PUR) FROM CHASSIS DISCONNECT TO MULTIPLEX BREAKER	141415-17-006	21
CABLE ASM (FROM COACH BREAKER TO MULTIPLEX PANEL)	189044-01-090	2
CABLE ASM (FROM CHASSIS BREAKER TO MULTIPLEX PANEL)	189044-02-090	2
CABLE ASM (FROM MULTIPLEX PANEL TO MULTIPLEX PANEL)	189044-01-004	

265 CODES/STANDARDS-CSA/CMVSS
 1B1 CODES/STANDARDS USA
 1B1 265

WINNEBAGO COPYRIGHT 2014 WINNEBAGO INDUSTRIES, INC.

DTR _____ ORIG. DATE _____
 CKR _____ ALL DIMENSIONS ARE IN MILLIMETERS
 P.E. _____
 M.E. _____ FIRST USED _____
 DSNR _____ **16 R-SERIES**

UNSPECIFIED TOLERANCES ARE:
 WHOLE DIM (X) : 3
 ONE-PLACE (X.X) : 1.5
 TWO-PLACE (X.XX) : 0.50
 ANGLE : 1'

THIRD ANGLE PROJECTION

DO NOT SCALE DRAWING REFER TO ES0018 FOR FASTENER TIGHTENING GUIDELINES

TITLE: **BATTERY INSTL**

SHEET 1 OF 4 PART NO **193925** REV _____

REF: 1 30-Jul-2015

3 SEE WIRING INSTL-FRONT END FOR ADDITIONAL INFORMATION.
 2 SEE WIRING INSTL-CHASSIS FOR ADDITIONAL INFORMATION.
 1 SEE LEVELING SYSTEM INSTL FOR ADDITIONAL INFORMATION.

FOR ELECTRICAL TORQUE SPECIFICATIONS SEE DWG NO. 128783-01-000

FOR ELECTRICAL CALLOUTS SEE DWG NO. 121339-01-000

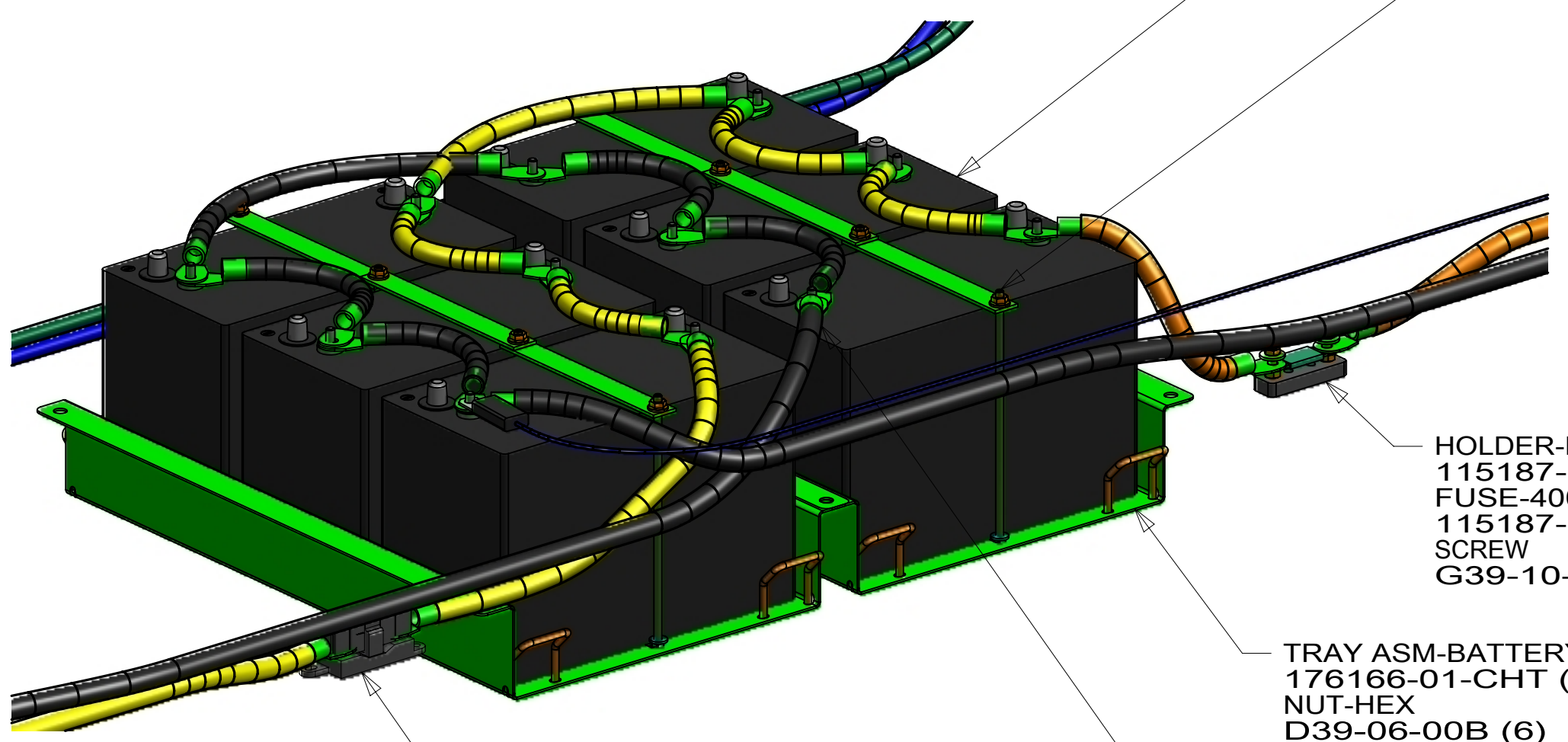
193925

- BATTERY-12V
174923-01-000 (6)
- BOLT
51387-06-000 (8)
- NUT-HEX
D39-05-00U (8)
- WASHER-RUBBER
184541-01-CHT (8)
- STRAP-BATTERY
TIE DOWN
138914-01-CHT (6)

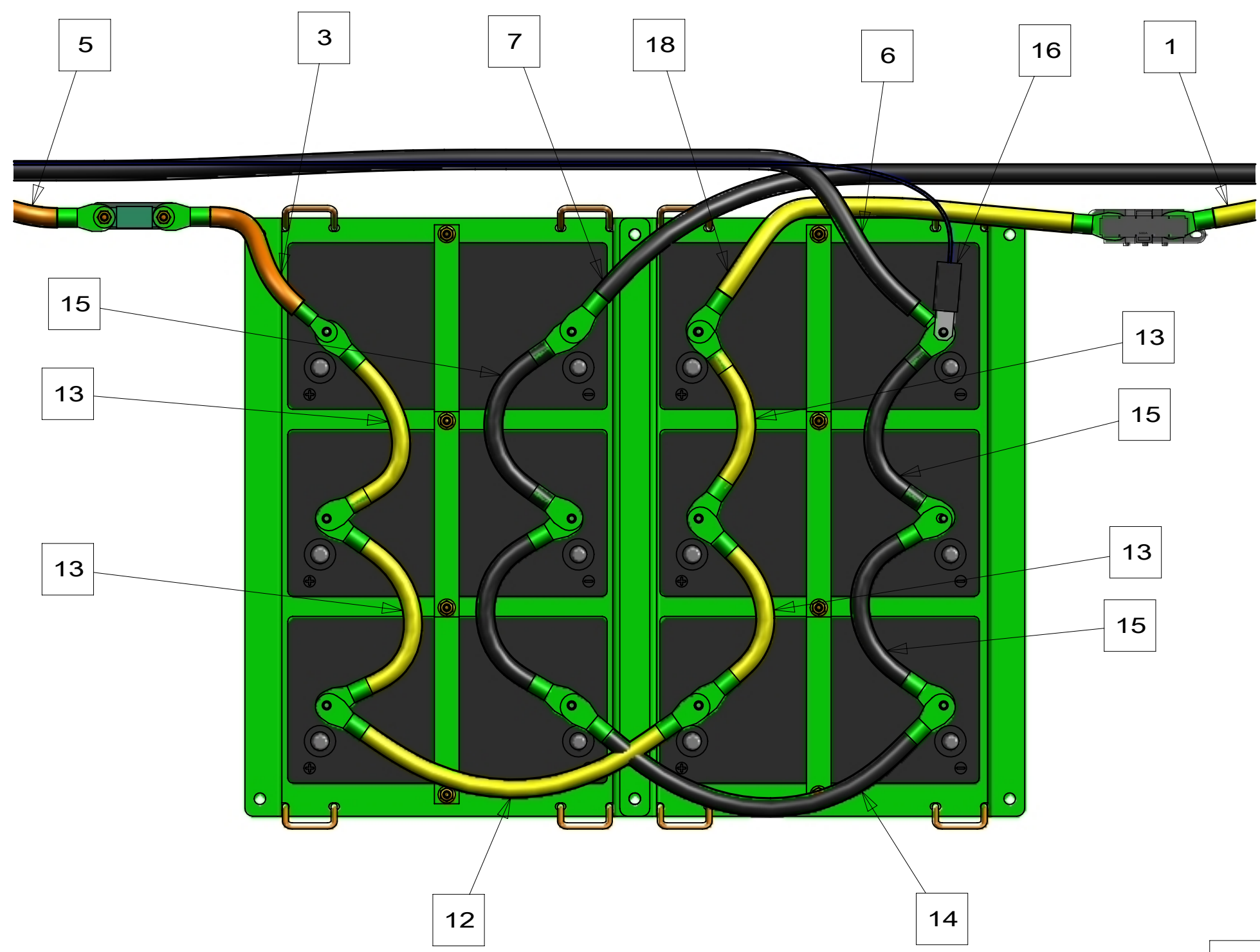
- HOLDER-FUSE
115187-02-000
- FUSE-400 AMP
115187-05-000
- SCREW
G39-10-16B (2)

- TRAY ASM-BATTERY
176166-01-CHT (2)
- NUT-HEX
D39-06-00B (6)
- CABLE ASM (BLK)
TO COACH GROUND STUD
LOCATED BEHIND CHASSIS
BATTERIES

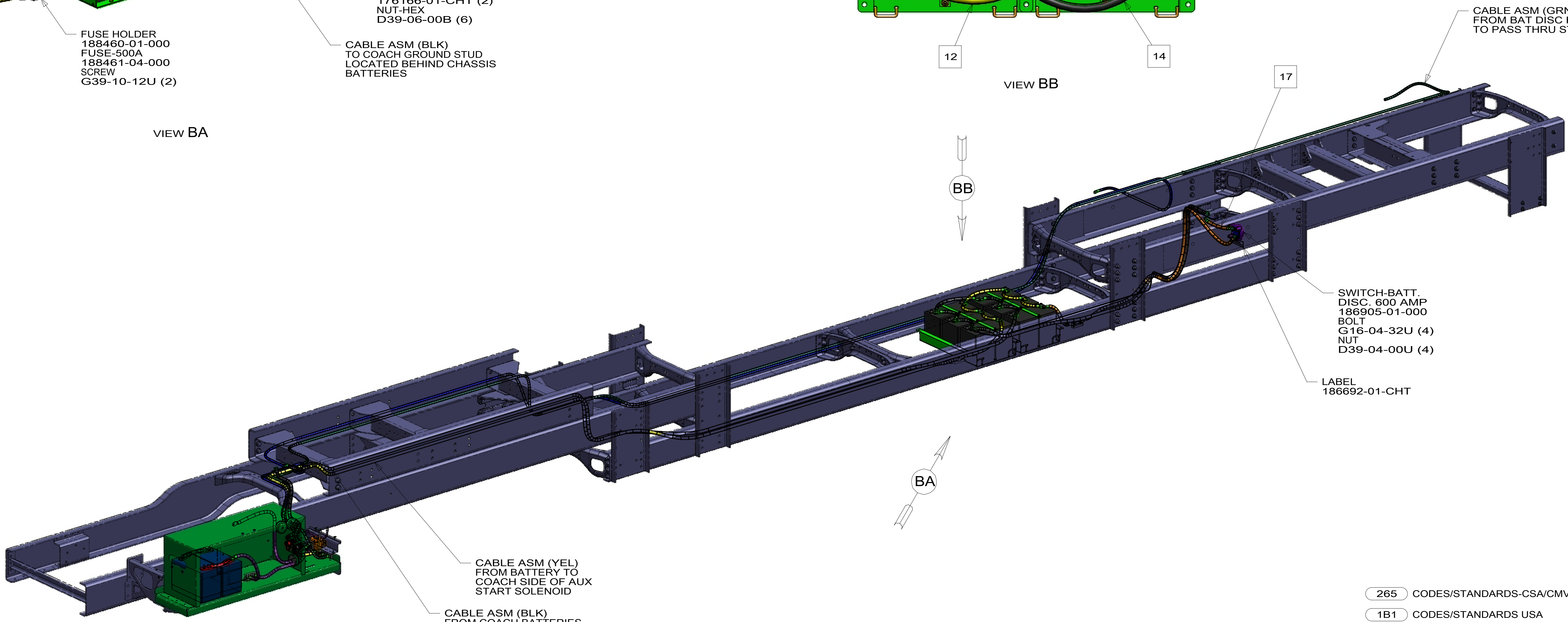
- FUSE HOLDER
188460-01-000
- FUSE-500A
188461-04-000
- SCREW
G39-10-12U (2)



VIEW BA



VIEW BB



- CABLE ASM (GRN)
FROM BAT DISC RELAY
TO PASS THRU STUD

- SWITCH-BATT.
DISC - 600 AMP
186905-01-000
- BOLT
G16-04-32U (4)
- NUT
D39-04-00U (4)

- LABEL
186692-01-CHT

- CABLE ASM (YEL)
FROM BATTERY TO
COACH SIDE OF AUX
START SOLENOID

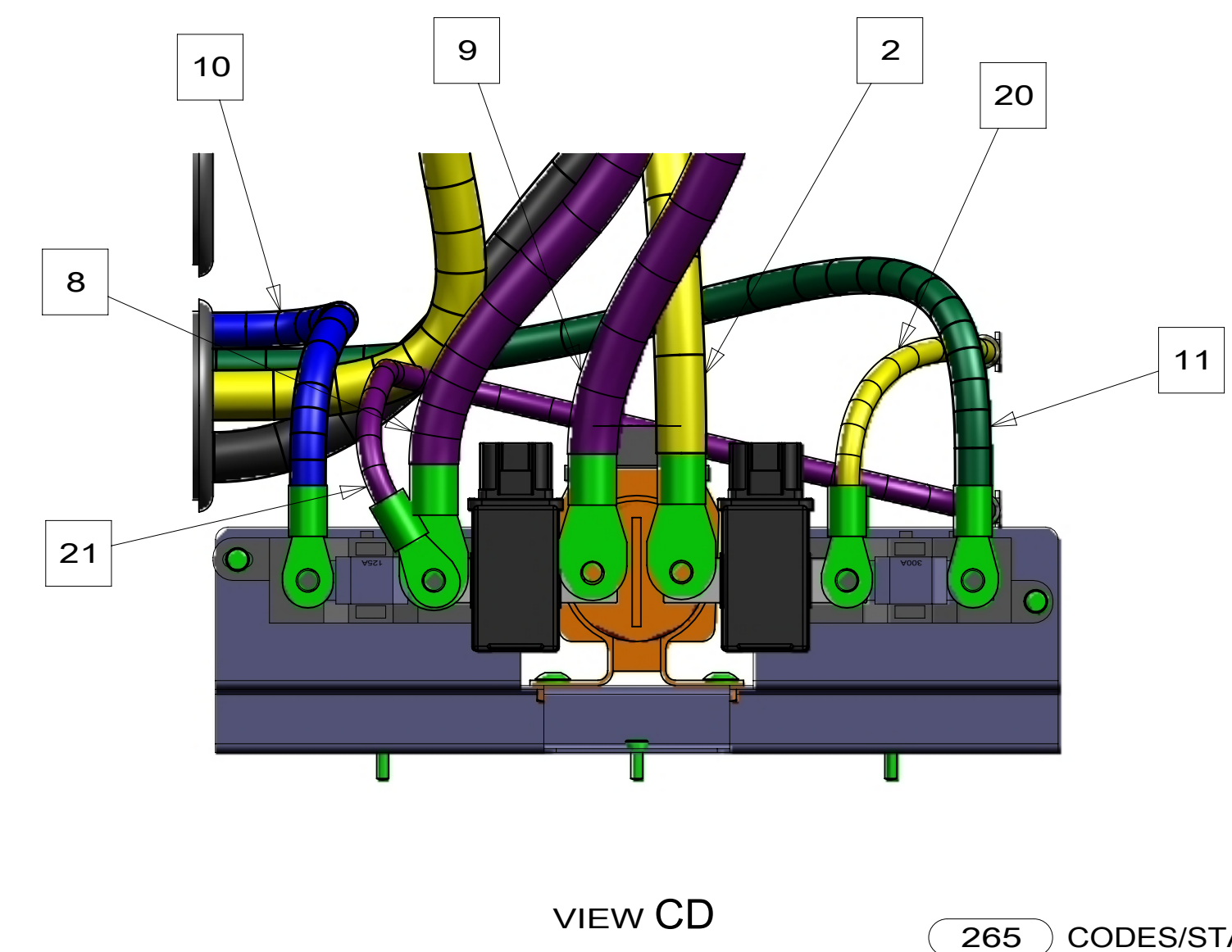
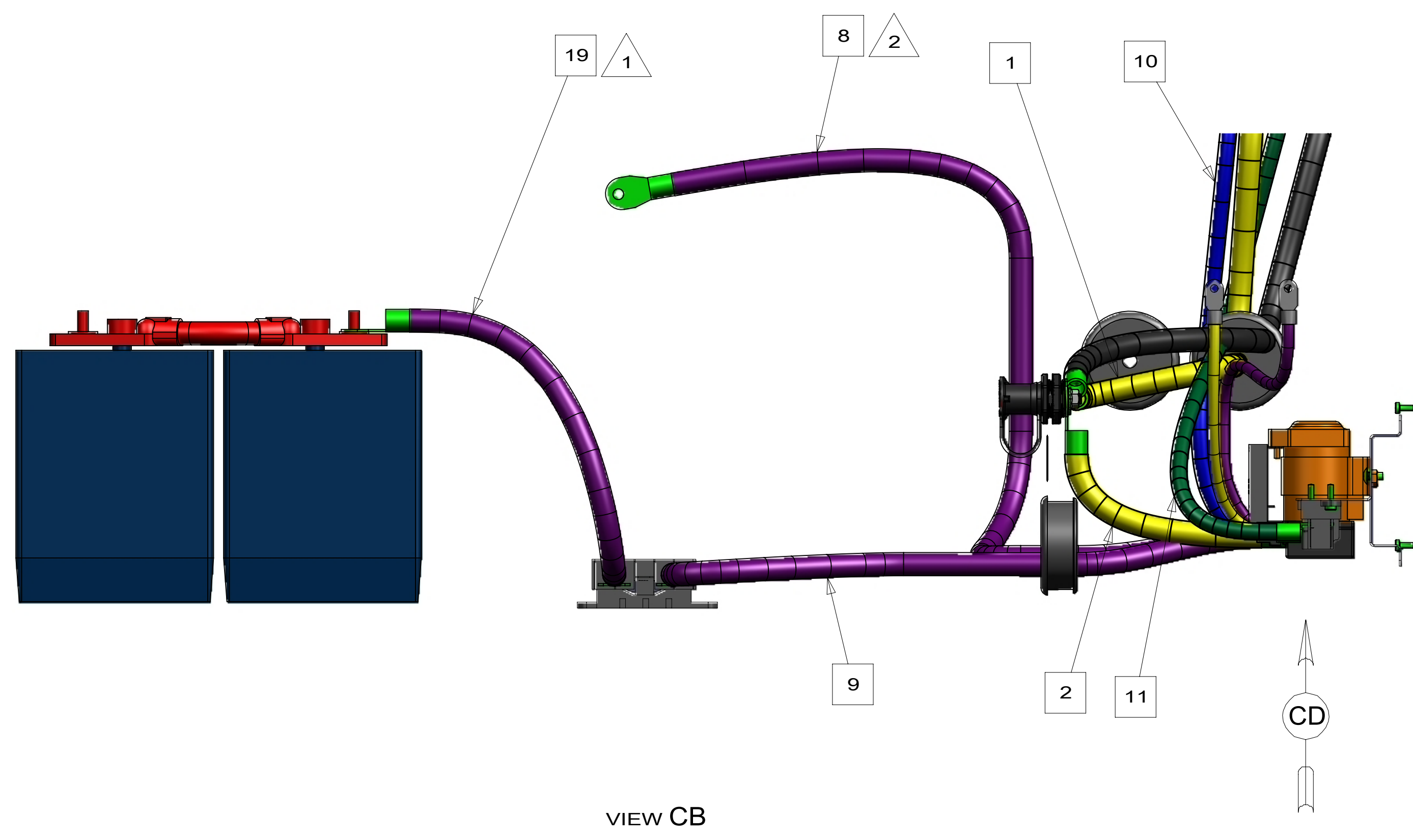
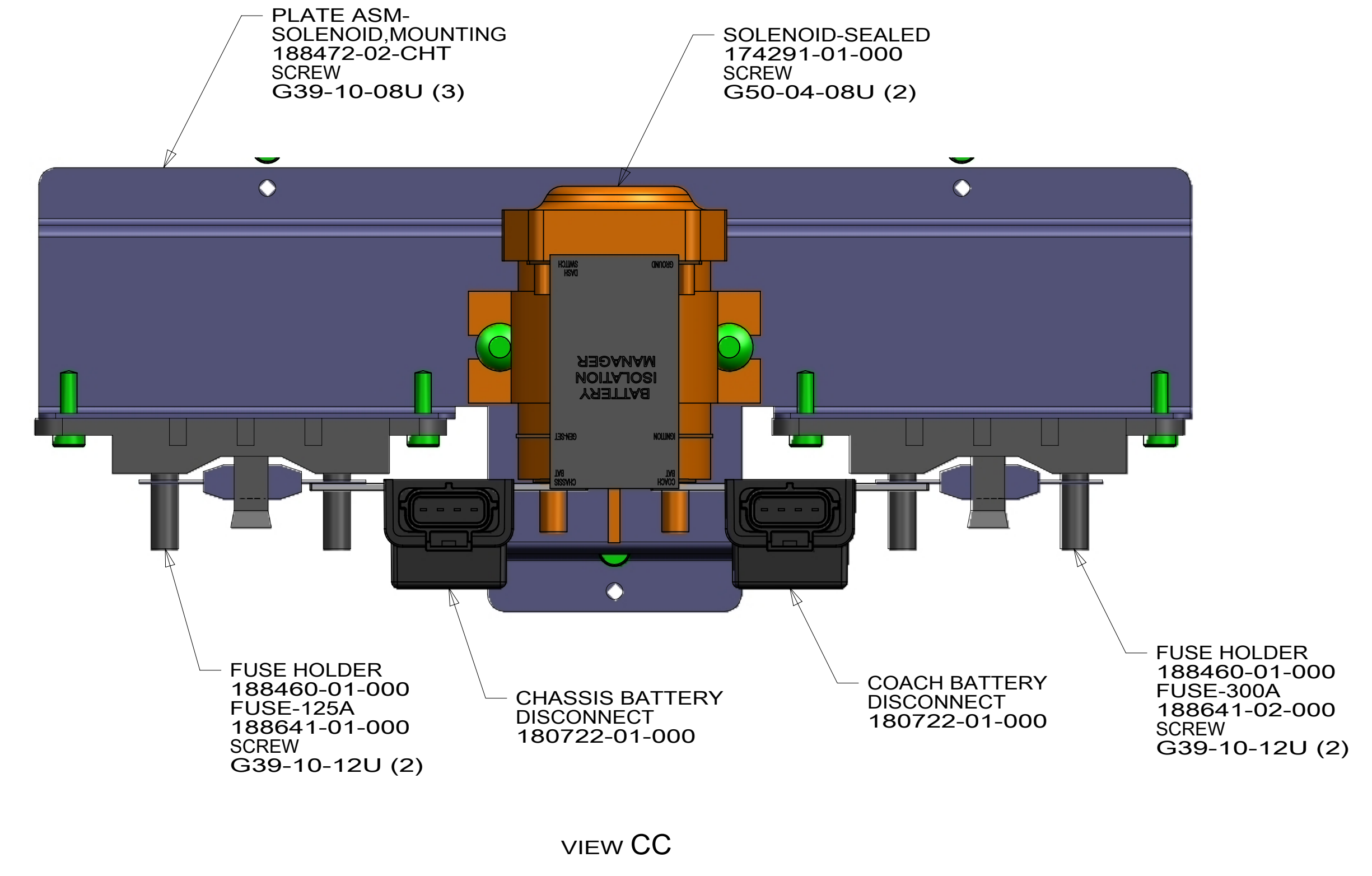
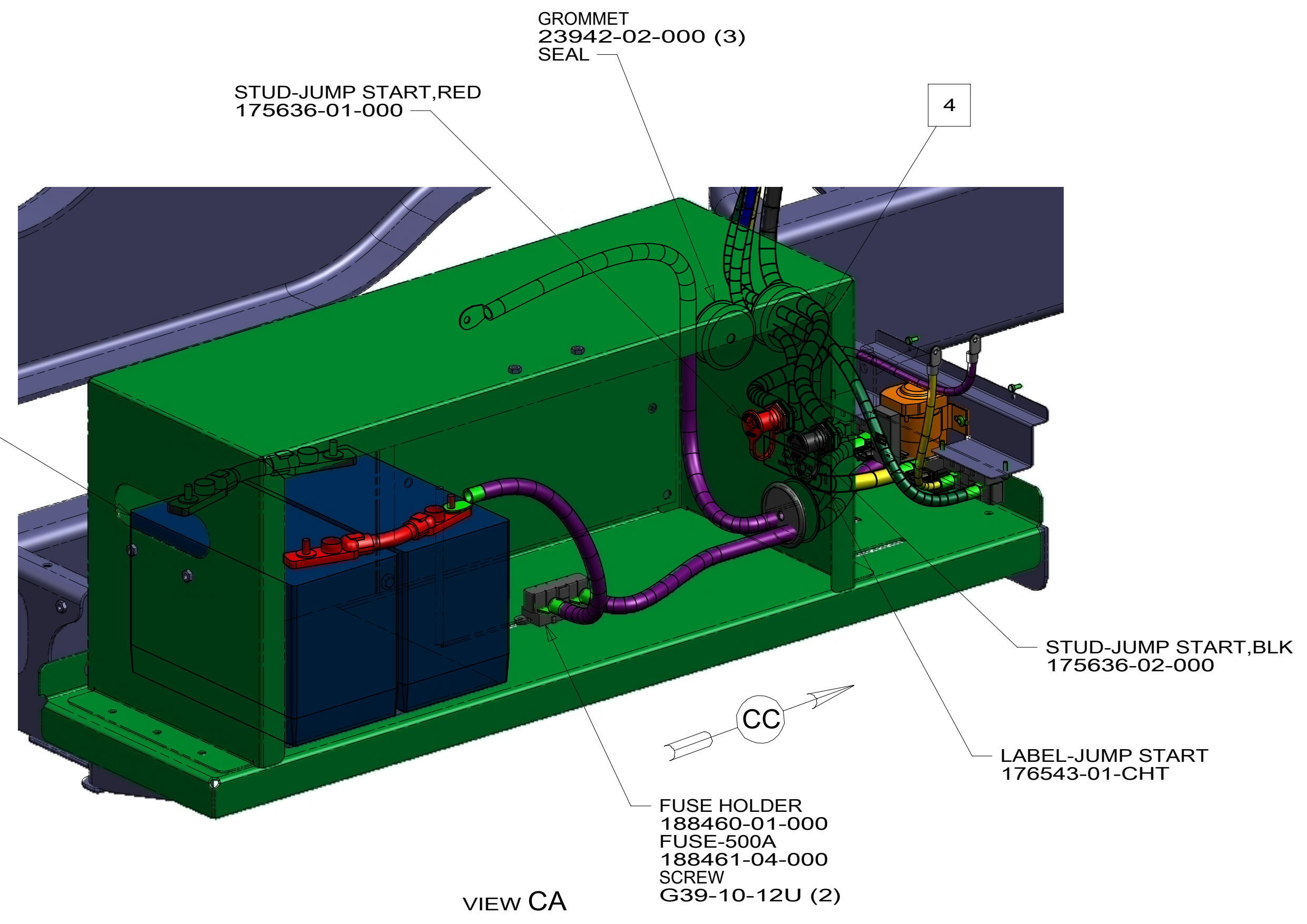
- CABLE ASM (BLK)
FROM COACH BATTERIES
TO GROUND BOLT

FOR ELECTRICAL
TORQUE
SPECIFICATIONS
SEE DWG NO.
128783-01-000

FOR
ELECTRICAL
CALLOUTS
SEE DWG NO.
121339-01-000

- 265 CODES/STANDARDS-CSA/CMVSS
- 1B1 CODES/STANDARDS USA
- 1B1 265

FIRST USED	
16 R-SERIES	
DO NOT SCALE DRAWING	
TITLE: BATTERY INSTL	
SHEET 2	PART NO 193925 REV



- NOTES:
- 2 PUR CABLE REPLACES CHASSIS SUPPLIED CABLE.
 - 1 REMOVE CABLE FROM CHASSIS PANEL AND INSTALL AS SHOWN ON FUSE.

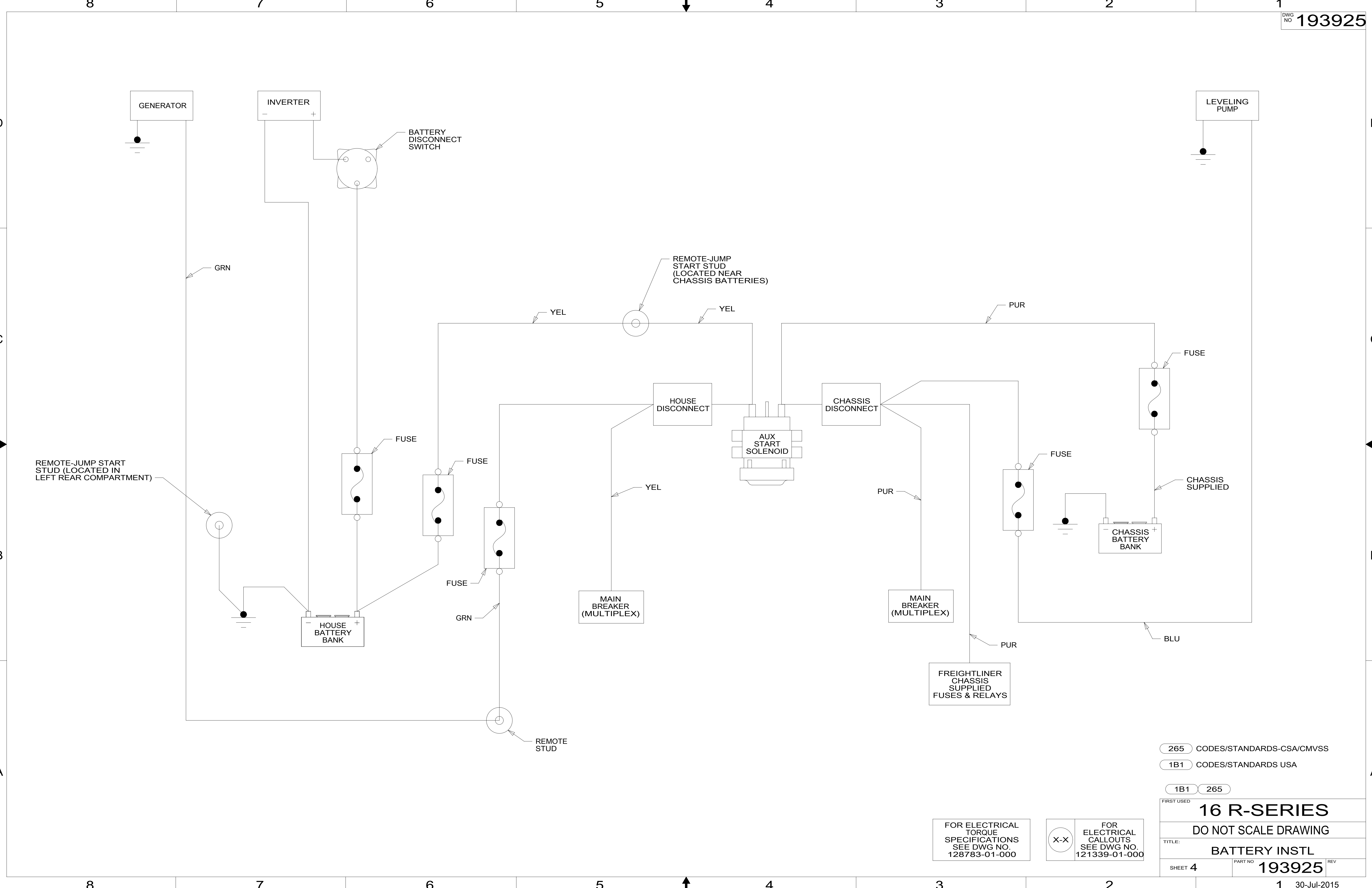
FOR ELECTRICAL TORQUE SPECIFICATIONS SEE DWG NO. 128783-01-000

FOR ELECTRICAL CALLOUTS SEE DWG NO. 121339-01-000

265 CODES/STANDARDS-CSA/CMVSS
1B1 CODES/STANDARDS USA

1B1	265
FIRST USED	
16 R-SERIES	
DO NOT SCALE DRAWING	
TITLE: BATTERY INSTL	
SHEET 3	PART NO. 193925 REV
	30-Jul-2015

193925



REMOTE-JUMP START STUD (LOCATED IN LEFT REAR COMPARTMENT)

GENERATOR

INVERTER

BATTERY DISCONNECT SWITCH

LEVELING PUMP

GRN

YEL

REMOTE-JUMP START STUD (LOCATED NEAR CHASSIS BATTERIES)

YEL

PUR

FUSE

FUSE

FUSE

GRN

HOUSE DISCONNECT

AUX START SOLENOID

CHASSIS DISCONNECT

MAIN BREAKER (MULTIPLEX)

PUR

MAIN BREAKER (MULTIPLEX)

FUSE

FUSE

CHASSIS SUPPLIED

CHASSIS BATTERY BANK

BLU

FREIGHTLINER CHASSIS SUPPLIED FUSES & RELAYS

REMOTE STUD

265 CODES/STANDARDS-CSA/CMVSS

1B1 CODES/STANDARDS USA

1B1 265

16 R-SERIES

DO NOT SCALE DRAWING

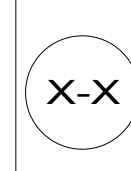
TITLE: BATTERY INSTL

SHEET 4 PART NO 193925 REV

30-Jul-2015

FOR ELECTRICAL TORQUE SPECIFICATIONS SEE DWG NO. 128783-01-000

FOR ELECTRICAL CALLOUTS SEE DWG NO. 121339-01-000



193925