

DRAWING NO.	MODEL
193643-01	L34T
193643-02	L36G

RELEASE	REV/DATE	DWG NO	193643
REV ZONE	REVISION RECORD	DATE	DFT-ORIG

		L34T	L36G
RED	1B1	136135-07-070	136135-07-061
	265	136136-07-070	136136-07-061
GRN	1B1	136135-08-070	136135-08-061
	265	136136-08-070	136136-08-061
YEL	1B1	136131-05-069	136131-05-053
	265	136134-05-069	136134-05-053
GLD	1B1	136131-10-069	136131-10-053
	265	136134-10-069	136134-10-053
GLD-2	1B1	136131-20-069	136131-20-053
	265	136134-20-069	136134-20-053
BLU	1B1	136131-02-088	136131-02-115
	265	136134-02-088	136134-02-115
BRN	1B1	136131-03-115	136131-03-145
	265	136134-03-115	136134-03-145
PUR	1B1	136131-04-210	136131-04-140
	265	136134-04-210	136134-04-140
WHT	1B1	136135-09-140	136135-09-093
	265	136136-09-140	136136-09-093

		L34T	L36G
ORG	1B1	136131-16-120	136131-16-120
	265	136134-16-120	136134-16-120
BLK	1B1	136131-06-069	136131-06-053
	265	136134-06-069	136134-06-053
GRY	1B1	136131-15-094	136131-15-098
	265	136134-15-094	136134-15-098
INVERTER CHARGER MAIN	1B1	136137-01-035	136137-01-024
	265	136138-01-035	136138-01-024
INVERTER CHARGER SUB MAIN	1B1	136137-01-035	136137-01-024
	265	136138-01-035	136138-01-024
CABLE ASM-MAIN,6 AWG		176841-01-028	176841-01-034
MAIN GROUND		136145-01-030	136145-01-025
ATS GROUND		136145-01-020	136145-01-015
INVERTER GROUND		136145-04-002	136145-04-022
GENERATOR CABLE ASM		136148-02-096	136148-02-109

14C

- FIREPLACE-ELECTRIC
- CODES/STANDARDS-CSA/CMVSS
- CODES/STANDARDS USA

		COPYRIGHT 2014 WINNEBAGO INDUSTRIES, INC.	
DFT-ORIG	ORIG. DATE	ALL DIMENSIONS ARE IN MILLIMETERS	
CHKR		FIRST USED	
P.E.		<b>16 L-SERIES</b>	
M.E.		UNSPECIFIED TOLERANCES ARE:	
DSNR		WHOLE DIM (X)	: 3 X
		ONE-PLACE (X.X)	: 1.5 X
		TWO-PLACE (X.XX)	: 0.50 X
		ANGLE	: 1' X
		THIRD ANGLE PROJECTION	X
DO NOT SCALE DRAWING		REFER TO ES0018 FOR FASTENER TIGHTENING GUIDELINES	
TITLE: <b>LOAD CENTER/ATS ASM</b>			
SHEET 1 OF 4	PART NO	<b>193643</b>	REV

SEE DETAIL BA FOR CONNECTOR INSTALLATION.  
NOTES:

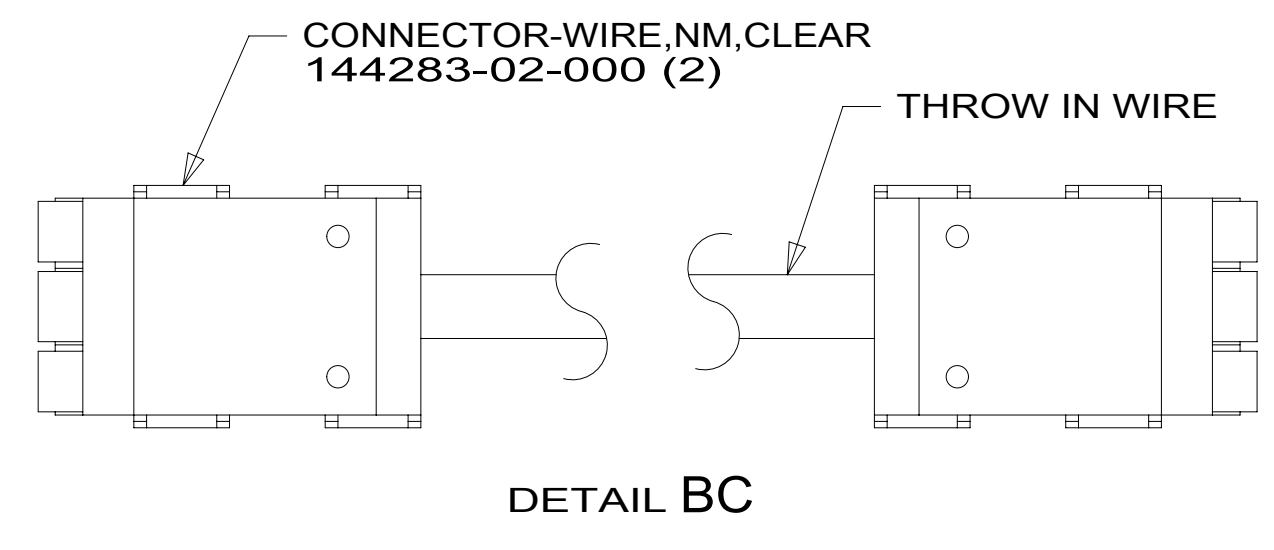
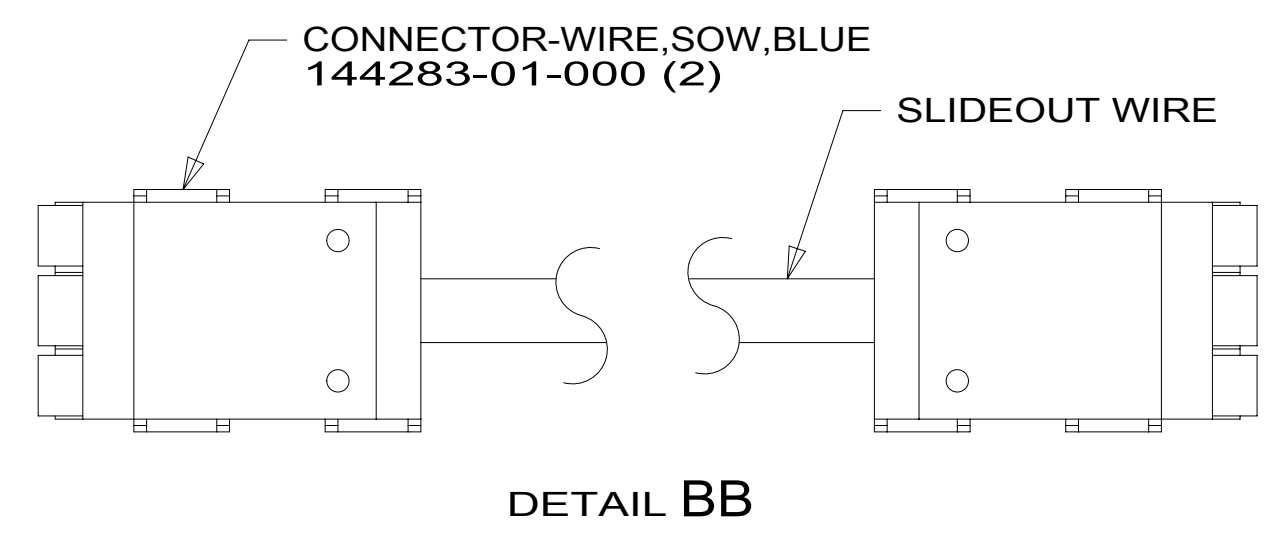
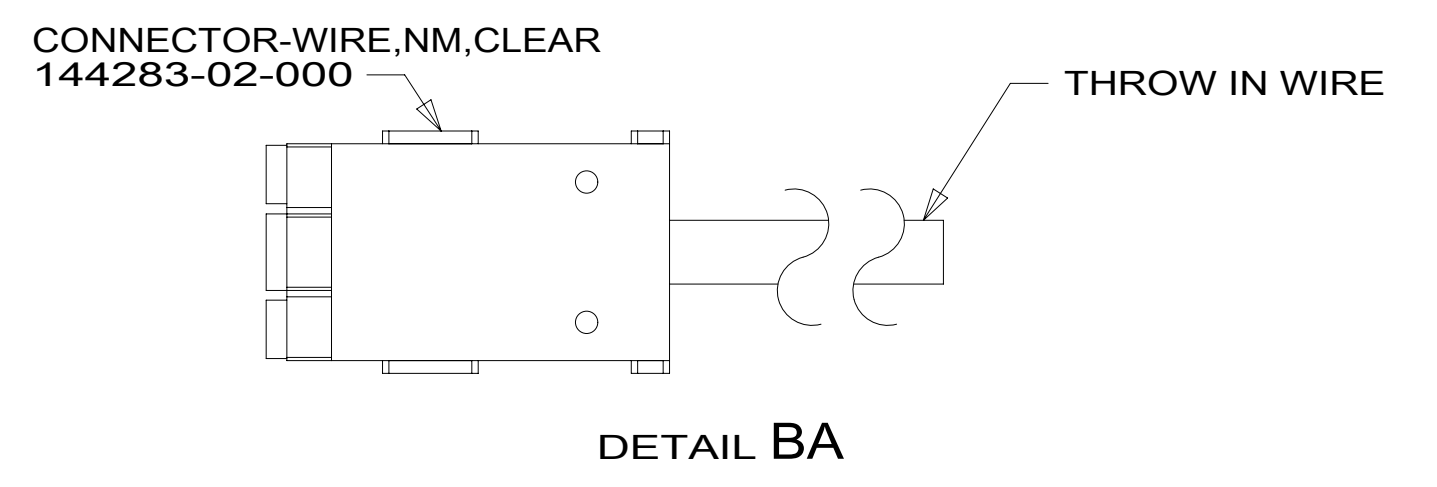
FOR ELECTRICAL TORQUE SPECIFICATIONS SEE DWG NO. 128783-01-000

FOR ELECTRICAL CALLOUTS SEE DWG NO. 121339-01-000

\*193643\*

		L34T		L36G	
THROW IN WIRE #1	1B1	136131-05-025	1	136131-02-062	1
	265	136134-05-025	1	136134-02-062	1
THROW IN WIRE #2	1B1			136131-04-080	3
	265			136134-04-080	3
THROW IN WIRE #3	1B1	136131-02-064		136131-02-003	1
	265	136134-02-064		136134-02-003	1
THROW IN WIRE #4	1B1	136131-10-045	1	136131-09-024	1
	265	136134-10-045	1	136134-09-024	1
THROW IN WIRE #5	1B1	136131-20-045	1	136131-02-070	1
	265	136134-20-045	1	136134-02-070	1
THROW IN WIRE #6	1B1	136131-04-030	421	136131-03-045	1
	265	136134-04-030	421	136134-03-045	1
THROW IN WIRE #7	1B1	136131-02-032	1DF	136131-05-007	1
	265	136134-02-032	1DF	136134-05-007	1

	L34T		L36G	
SLIDEOUT WIRE #1	136151-04-032	2	136151-05-019	2
SLIDEOUT WIRE #2	136151-05-028	2	136151-02-019	2
SLIDEOUT WIRE #3	136151-02-028	2	136151-06-019	2
SLIDEOUT WIRE #4	136151-06-028	2	136151-10-019	2
SLIDEOUT WIRE #5	136151-10-028	2	136151-20-019	2
SLIDEOUT WIRE #6	136151-20-028	2	136151-04-019	2
SLIDEOUT WIRE #7			136151-09-019	2
SLIDEOUT WIRE #8			136151-02-025	2
SLIDEOUT WIRE #9			136151-03-025	2
SLIDEOUT WIRE #10			136151-03-015	2



NOTES:

3 SEE DETAIL BC FOR CONNECTOR INSTALLATION.

2 SEE DETAIL BB FOR CONNECTOR INSTALLATION.

1 SEE DETAIL BA FOR CONNECTOR INSTALLATION.

- 421 SOFA/DINETTE SECTIONAL
- 1DF EXT TV ENTERTAINMENT CENTER
- 265 CODES/STANDARDS-CSA/CMVSS
- 1B1 CODES/STANDARDS-USA

1B1 265

FOR ELECTRICAL TORQUE SPECIFICATIONS SEE DWG NO. 128783-01-000

FOR ELECTRICAL CALLOUTS SEE DWG NO. 121339-01-000

FIRST USED

# 16 L-SERIES

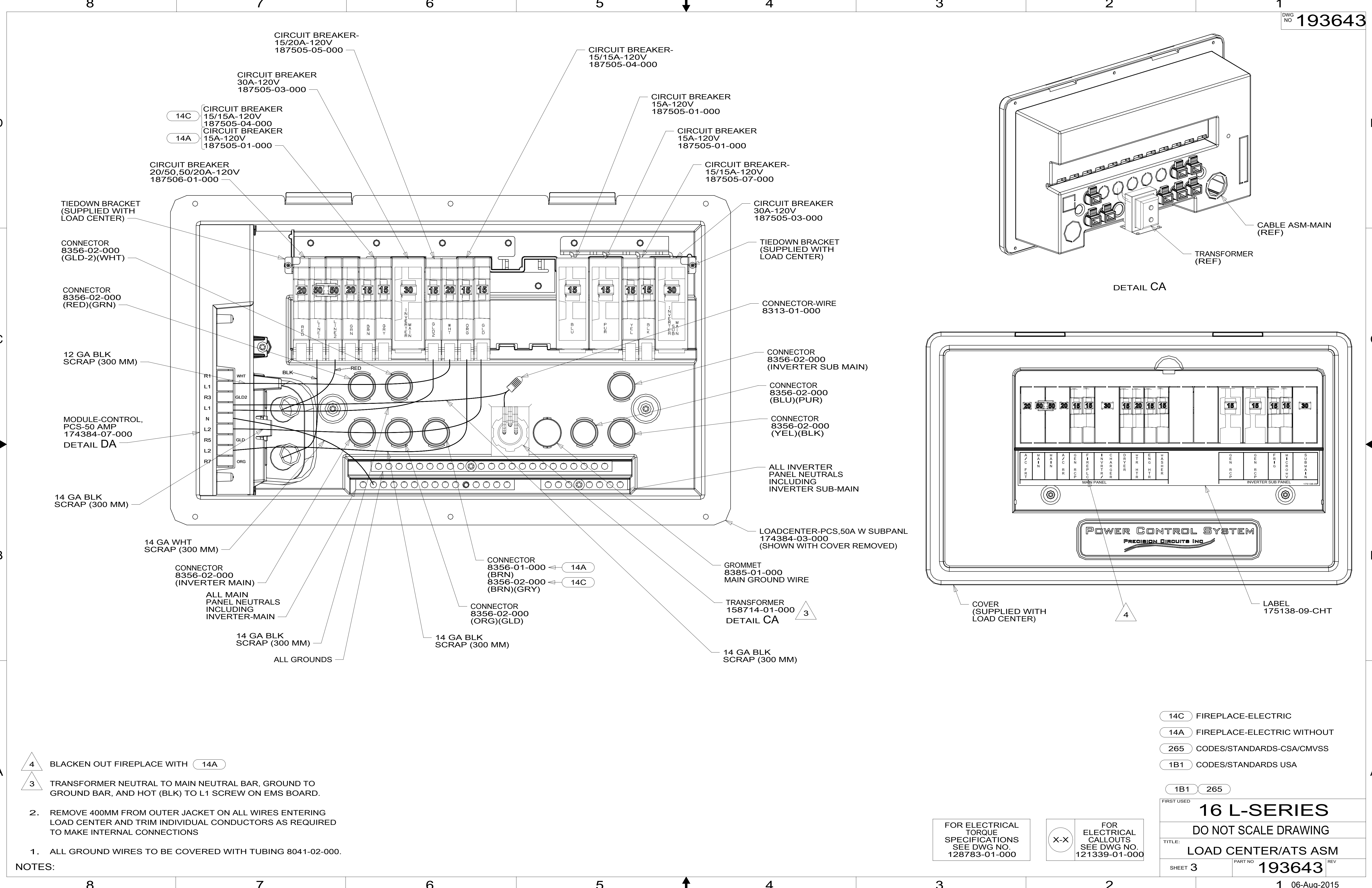
DO NOT SCALE DRAWING

TITLE: LOAD CENTER/ATS ASM

SHEET 2 PART NO. 193643 REV

1 06-Aug-2015

\*193643\*



- NOTES:
- 1. ALL GROUND WIRES TO BE COVERED WITH TUBING 8041-02-000.
  - 2. REMOVE 400MM FROM OUTER JACKET ON ALL WIRES ENTERING LOAD CENTER AND TRIM INDIVIDUAL CONDUCTORS AS REQUIRED TO MAKE INTERNAL CONNECTIONS
  - 3. TRANSFORMER NEUTRAL TO MAIN NEUTRAL BAR, GROUND TO GROUND BAR, AND HOT (BLK) TO L1 SCREW ON EMS BOARD.
  - 4. BLACKEN OUT FIREPLACE WITH 14A

FOR ELECTRICAL TORQUE SPECIFICATIONS SEE DWG NO. 128783-01-000

X-X

FOR ELECTRICAL CALLOUTS SEE DWG NO. 121339-01-000

- 14C FIREPLACE-ELECTRIC
- 14A FIREPLACE-ELECTRIC WITHOUT
- 265 CODES/STANDARDS-CSA/CMVSS
- 1B1 CODES/STANDARDS USA

FIRST USED

**16 L-SERIES**

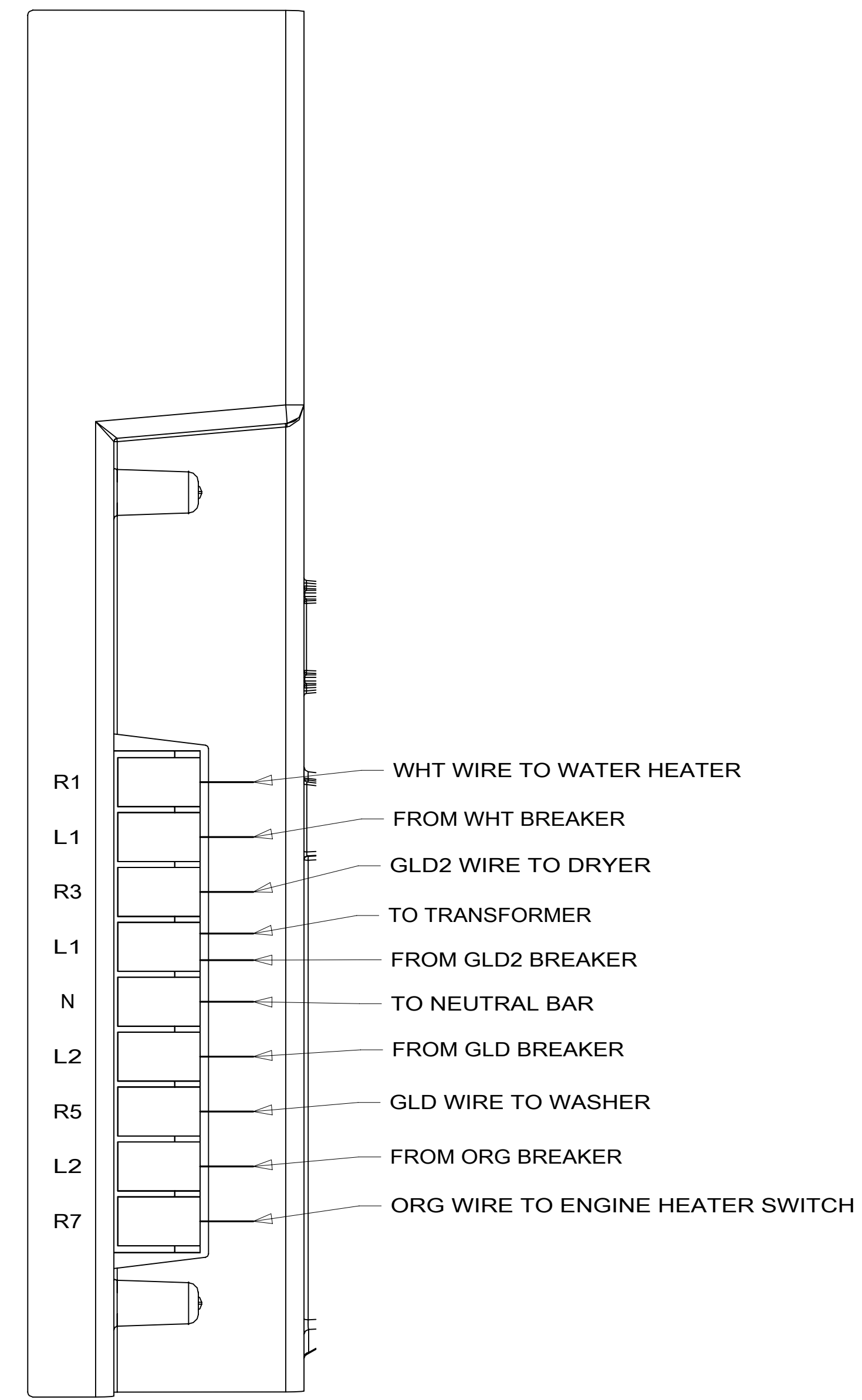
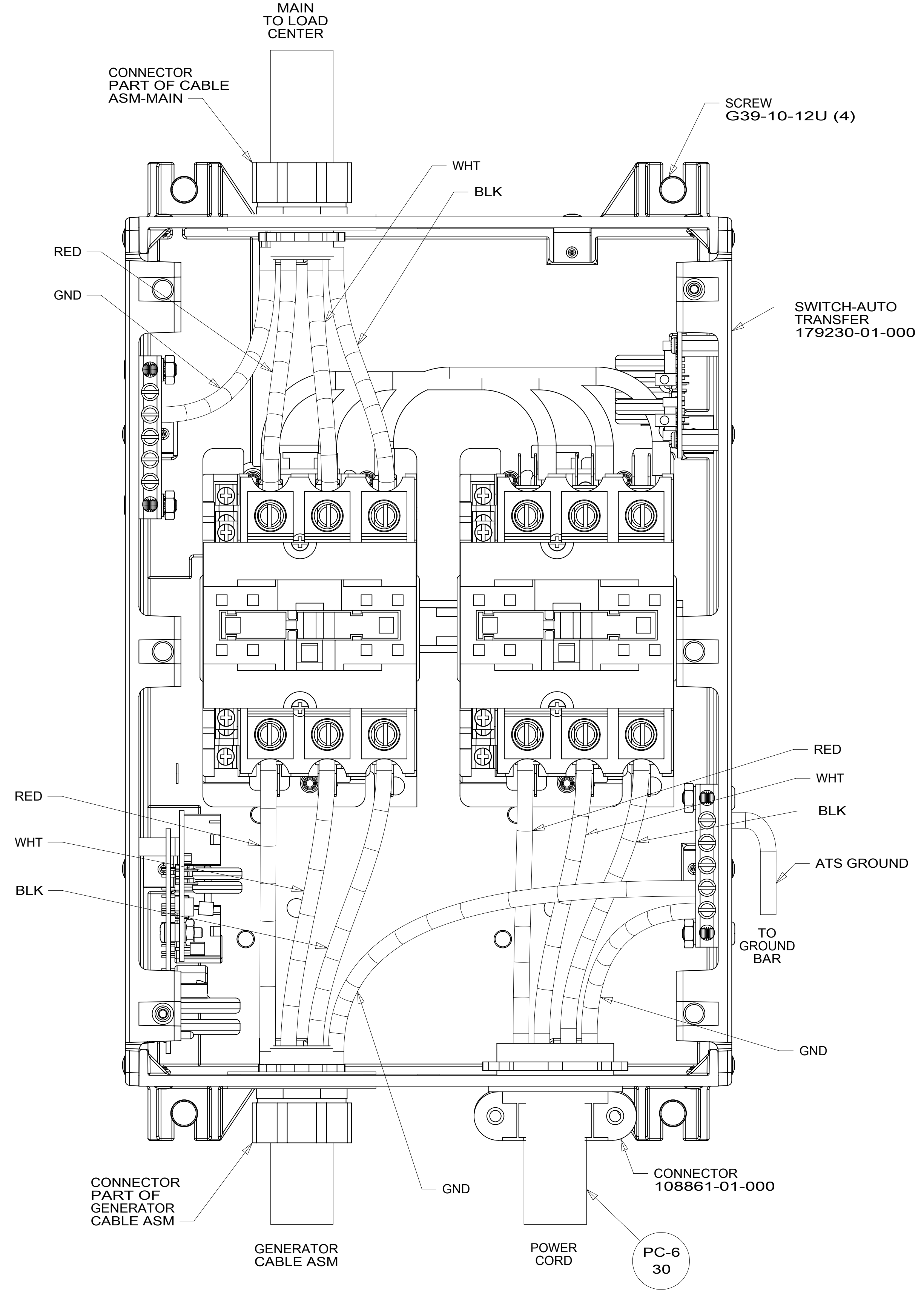
DO NOT SCALE DRAWING

TITLE: **LOAD CENTER/ATS ASM**

SHEET 3 PART NO **193643** REV

1 06-Aug-2015

\*193643\*



265 CODES/STANDARDS-CSA/CMVSS

1B1 CODES/STANDARDS USA

1B1 265

FIRST USED **16 L-SERIES**

DO NOT SCALE DRAWING

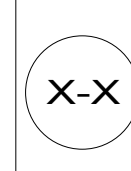
TITLE: **LOAD CENTER/ATS ASM**

SHEET 4 PART NO **193643** REV

1 06-Aug-2015

FOR ELECTRICAL TORQUE SPECIFICATIONS SEE DWG NO. 128783-01-000

FOR ELECTRICAL CALLOUTS SEE DWG NO. 121339-01-000



\*193643\*