

8	
DRAWING NO.	MODELS
193642-01	L34T
193642-02	L36G

1	REV/DATE	DWG NO	193642
RELEASE	A	REV ZONE	REVISION RECORD
		DATE	DFT-ORIG

	L34T	L36G	ITEM
CABLE ASM (YEL) FROM COACH BATTERY FUSE TO COACH SIDE OF AUX START SOLENOID	175207-52-039	175207-52-039	1
CABLE ASM (ORG) FROM COACH BATTERY TO INVERTER FUSE	175207-62-003	175207-62-003	2
CABLE ASM (ORG) FROM INVERTER FUSE TO INVERTER DISCONNECT	175207-62-012	175207-62-012	3
CABLE ASM (ORG) FROM INVERTER DISCONNECT TO INVERTER POSITIVE TERMINAL	175207-62-005	175207-62-005	4
CABLE ASM (BLK) FROM BATTERY TO INVERTER NEGATIVE TERMINAL	175211-01-018	175211-01-018	5
CABLE ASM (BLK) FROM COACH BATTERY TO FRAME RAIL GROUND	175211-02-030	175211-02-030	6
CABLE ASM (BLU) FROM CHASSIS BATTERY DISCONNECT TO LEVELING SYSTEM PUMP	141416-26-084	141416-26-110	7
CABLE ASM (BLK) FROM LEVELING SYSTEM TO FRAME RAIL GROUND	133567-11-009	133567-11-009	8
CABLE ASM (GRN) FROM COACH BAT DISC RELAY FUSE TO PASS THRU STUD IN FRONT LEFT COMPT	175207-42-107	175207-42-115	9
CABLE ASM (GRN) FROM PASS THRU STUD IN FRONT LEFT COMPT TO GENERATOR	175207-42-024	175207-42-024	10
CABLE ASM (BLK) FROM GENERATOR TO FRAME RAIL GROUND BOLT	175211-02-013	175211-02-013	11
CABLE ASM (YEL) JUMPER BETWEEN POSITIVE POSTS ON COACH BATTERY	141417-51-002 (3)	141417-51-002 (3)	12
CABLE ASM (BLK) JUMPER BETWEEN NEGATIVE POSTS ON COACH BATTERY	133568-11-002 (3)	133568-11-002 (3)	13
CABLE ASM-TEMPERATURE,BATTERY	175385-03-000	175385-03-000	14
CABLE ASM (RED) FROM CHASSIS BATTERY FUSE TO CHASSIS SIDE OF AUX START SOLENOID	175207-35-006	175207-35-006	15
CABLE ASM (RED) FROM CHASSIS BATTERY TO CHASSIS BATTERY FUSE	175207-35-005	175207-35-005	16
CABLE ASM (YEL) FROM COACH BATTERY TO COACH BATTERY FUSE	175207-52-003	175207-52-003	17
CABLE ASM (RED) JUMPER BETWEEN POSITIVE POSTS IN LEFT FRONT COMPT	141417-32-002	141417-32-002	18

265 CODES/STANDARDS-CSA/CMVSS
 1B1 CODES/STANDARDS USA

1B1 265

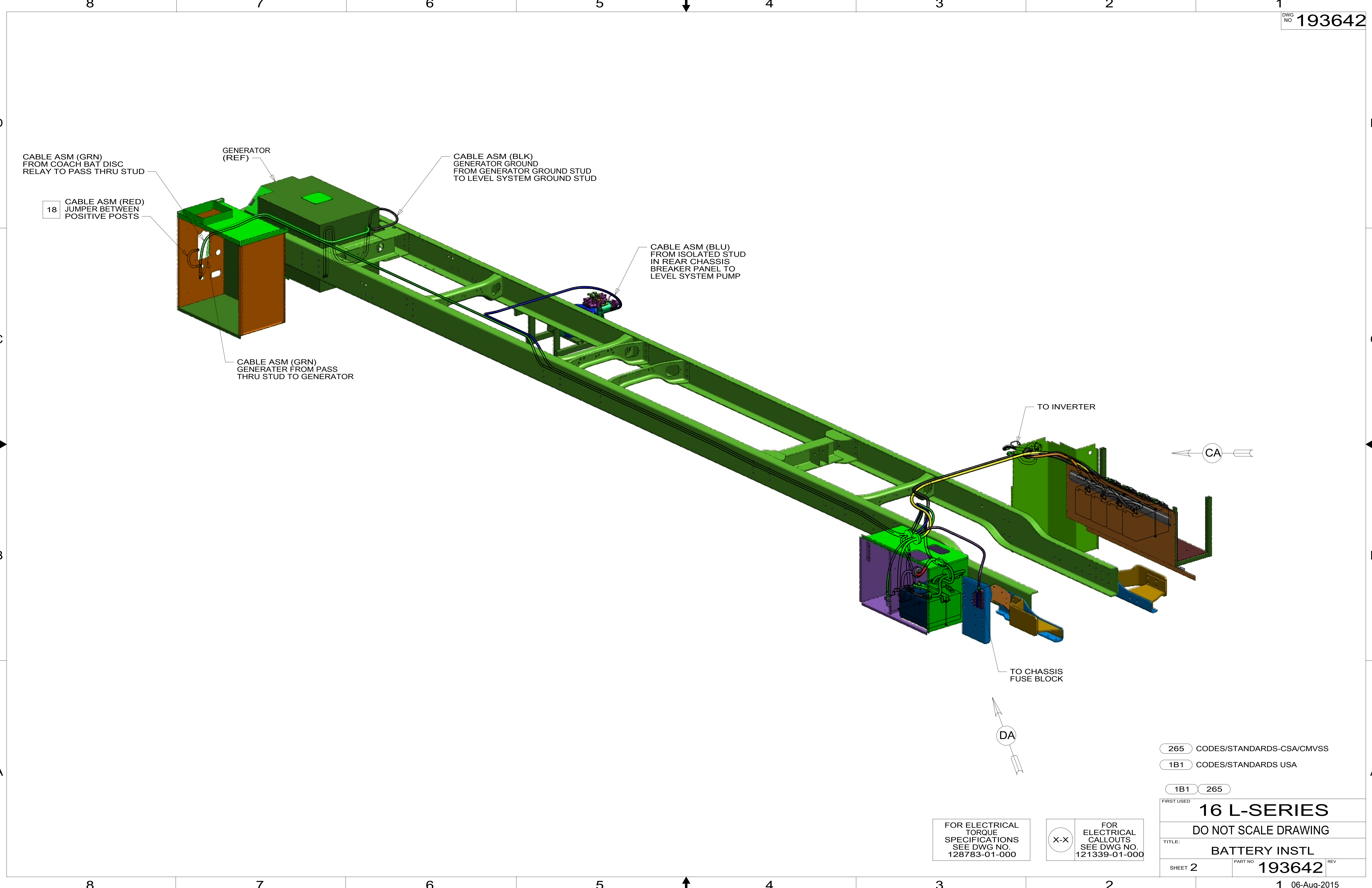


DFT-ORIG	ORIG. DATE
CHKR	ALL DIMENSIONS ARE IN MILLIMETERS
P.E.	
M.E.	
DSNR	FIRST USED
16 L-SERIES	
UNSPECIFIED TOLERANCES ARE:	
WHOLE DIM (X)	: 3
ONE-PLACE (X.X)	: 1.5
TWO-PLACE (X.XX)	: 0.50
ANGLE	: 1'
THIRD ANGLE PROJECTION	
DO NOT SCALE DRAWING	REFER TO ES0018 FOR FASTENER TIGHTENING GUIDELINES
TITLE: BATTERY INSTL	
SHEET 1 OF 5	PART NO 193642

FOR ELECTRICAL TORQUE SPECIFICATIONS SEE DWG NO. 128783-01-000

FOR ELECTRICAL CALLOUTS SEE DWG NO. 121339-01-000

193642



CABLE ASM (GRN)
FROM COACH BAT DISC
RELAY TO PASS THRU STUD

GENERATOR
(REF)

CABLE ASM (BLK)
GENERATOR GROUND
FROM GENERATOR GROUND STUD
TO LEVEL SYSTEM GROUND STUD

18 CABLE ASM (RED)
JUMPER BETWEEN
POSITIVE POSTS

CABLE ASM (BLU)
FROM ISOLATED STUD
IN REAR CHASSIS
BREAKER PANEL TO
LEVEL SYSTEM PUMP

CABLE ASM (GRN)
GENERATOR FROM PASS
THRU STUD TO GENERATOR

TO INVERTER

CA

TO CHASSIS
FUSE BLOCK

DA

265 CODES/STANDARDS-CSA/CMVSS

1B1 CODES/STANDARDS USA

1B1 265

FIRST USED
16 L-SERIES

DO NOT SCALE DRAWING

TITLE:
BATTERY INSTL

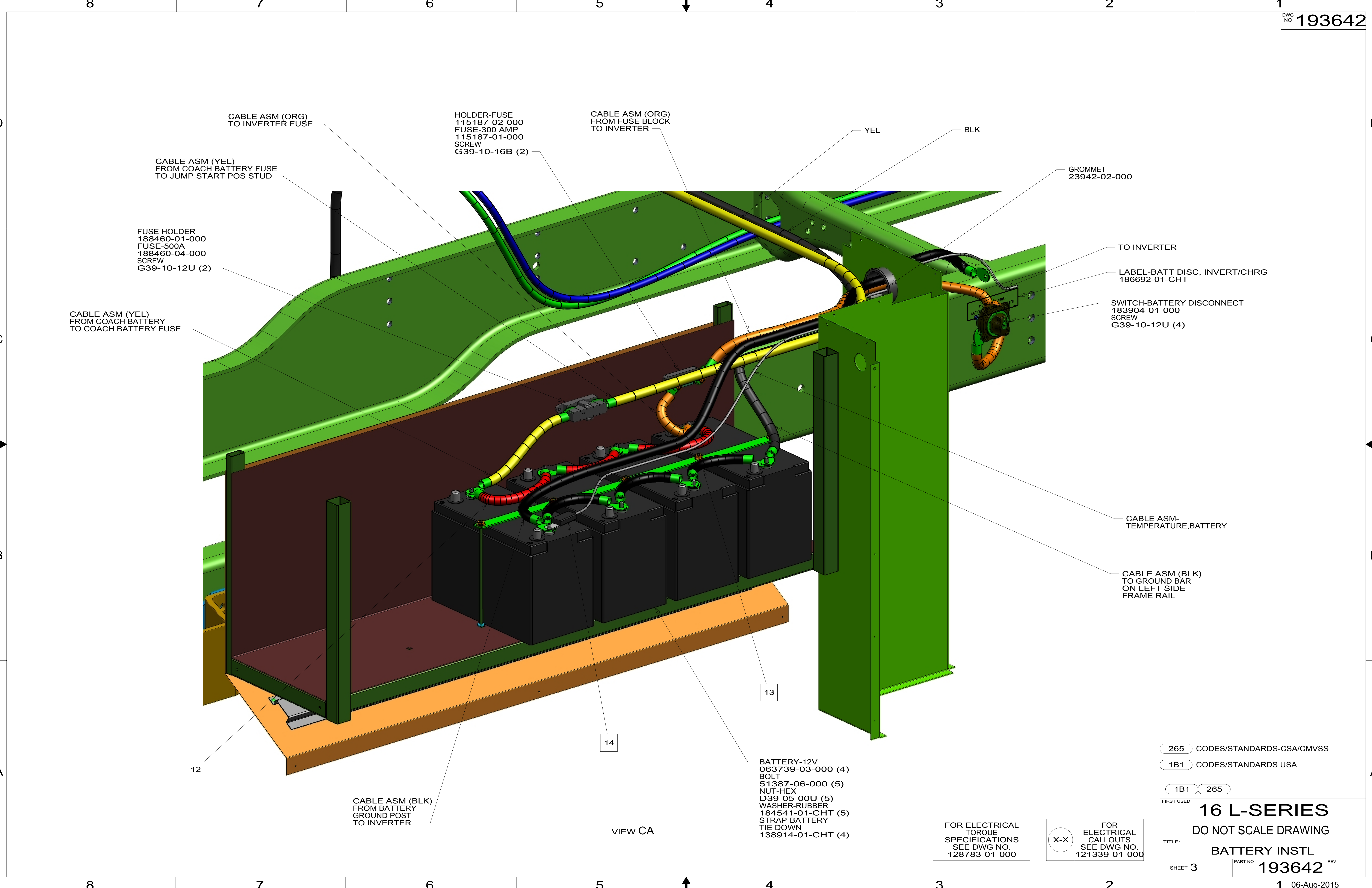
SHEET 2 PART NO **193642** REV

1 06-Aug-2015

FOR ELECTRICAL
TORQUE
SPECIFICATIONS
SEE DWG NO.
128783-01-000

X-X
FOR
ELECTRICAL
CALLOUTS
SEE DWG NO.
121339-01-000

193642



CABLE ASM (ORG)
TO INVERTER FUSE

HOLDER-FUSE
115187-02-000
FUSE-300 AMP
115187-01-000
SCREW
G39-10-16B (2)

CABLE ASM (ORG)
FROM FUSE BLOCK
TO INVERTER

YEL

BLK

GROMMET
23942-02-000

CABLE ASM (YEL)
FROM COACH BATTERY FUSE
TO JUMP START POS STUD

FUSE HOLDER
188460-01-000
FUSE-500A
188460-04-000
SCREW
G39-10-12U (2)

TO INVERTER

LABEL-BATT DISC, INVERT/CHRG
186692-01-CHT

SWITCH-BATTERY DISCONNECT
183904-01-000
SCREW
G39-10-12U (4)

CABLE ASM (YEL)
FROM COACH BATTERY
TO COACH BATTERY FUSE

CABLE ASM-
TEMPERATURE,BATTERY

CABLE ASM (BLK)
TO GROUND BAR
ON LEFT SIDE
FRAME RAIL

12

13

14

CABLE ASM (BLK)
FROM BATTERY
GROUND POST
TO INVERTER

VIEW CA

BATTERY-12V
063739-03-000 (4)
BOLT
51387-06-000 (5)
NUT-HEX
D39-05-00U (5)
WASHER-RUBBER
184541-01-CHT (5)
STRAP-BATTERY
TIE DOWN
138914-01-CHT (4)

FOR ELECTRICAL
TORQUE
SPECIFICATIONS
SEE DWG NO.
128783-01-000

FOR
ELECTRICAL
CALLOUTS
SEE DWG NO.
121339-01-000

265 CODES/STANDARDS-CSA/CMVSS

1B1 CODES/STANDARDS USA

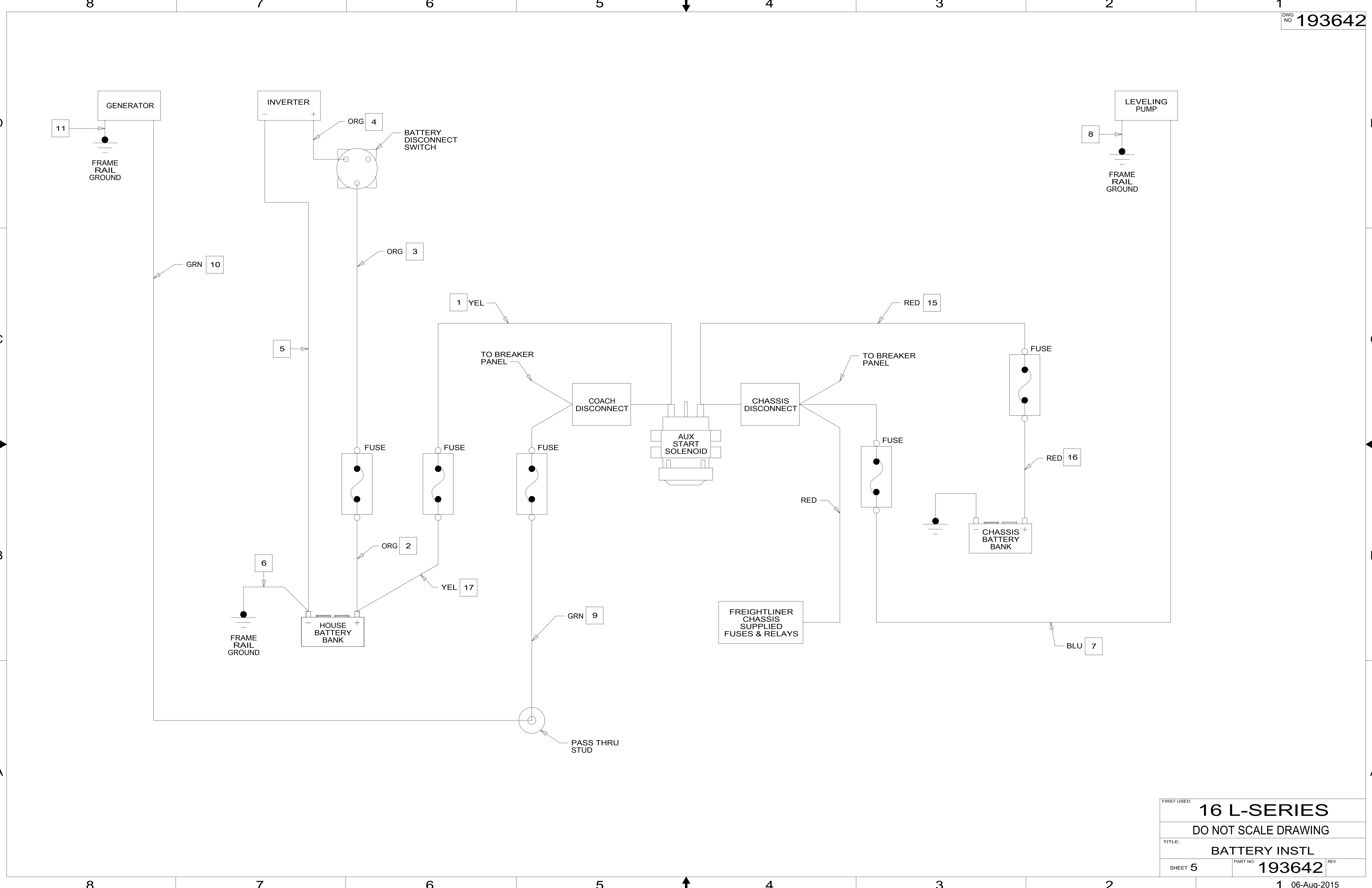
1B1 265

FIRST USED
16 L-SERIES

DO NOT SCALE DRAWING

TITLE:
BATTERY INSTL

SHEET 3 PART NO **193642** REV



FIRST USED		
16 L-SERIES		
DO NOT SCALE DRAWING		
TITLE:		
BATTERY INSTL		
SHEET 5	PART NO	REV
	193642	
1 06-Aug-2015		

193642