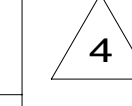
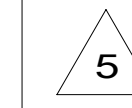
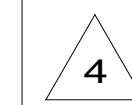


DRAWING NO.	MODEL
192462-01	170A
192462-02	170X

RELEASE	REV/DATE	DWG NO	192462
REV ZONE	REVISION RECORD	DATE	DFT-ORIG

		170A	170X
RED	1B1	136135-07-042	136135-07-045
	265	136136-07-042	136136-07-045
YEL	1B1	136131-05-016	136131-05-015
	265	136134-05-016	136134-05-015
BLK	1B1	136131-06-085	136131-06-065
	265	136134-06-085	136134-06-065
BLU	1B1	136131-02-190	136131-02-215
	265	136134-02-190	136134-02-215
WHT	1B1	136135-09-045	136135-09-045
	265	136136-09-045	136136-09-045
YEL-2	1B1	136131-13-080	136131-13-085
	265	136134-13-080	136134-13-085
MAIN	1B1	136137-01-028	136137-01-060
	265	136138-01-028	136138-01-060
GROUND MAIN		136145-05-085	136145-05-075
MAIN EXTENSION	1B1	136137-01-028	136137-01-025
	265	136138-01-028	136138-01-025
CORD-POWER ASM		183140-01-000	183140-01-000
GROUND ATS		136145-05-080	136145-05-066
GENERATOR EXTENSION	1B1		136137-01-020
	265		136138-01-020



- NOTES:
- 5 DO NOT HI-POT POWER CORD, LED INDICATOR LIGHT MAY FAIL.
  - 4 GROUND WIRES TO BE INSTALLED ON MFG LINE. SHIP GROUND WIRES LOOSE WITH LOAD CENTER.
  - 3. SEE WIRING INSTL-BODY, 12V FOR ADDITIONAL INFORMATION.
  - 2. SECURE WIRES TO BACKSIDE OF LOAD CENTER WITH WIRE TIE 116673-01-000.
  - 1. ALL GROUNDS WIRES TO BE COVERED WITH TUBING 8041-02-000.

265 CODES/STANDARDS-CSA/CMVSS  
 1B1 CODES/STANDARDS USA

1B1 265

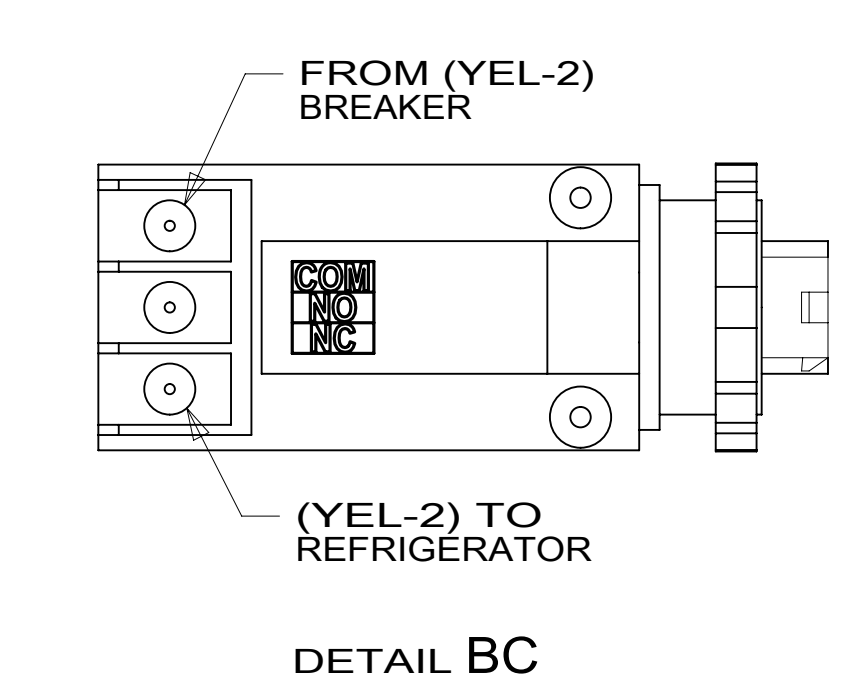
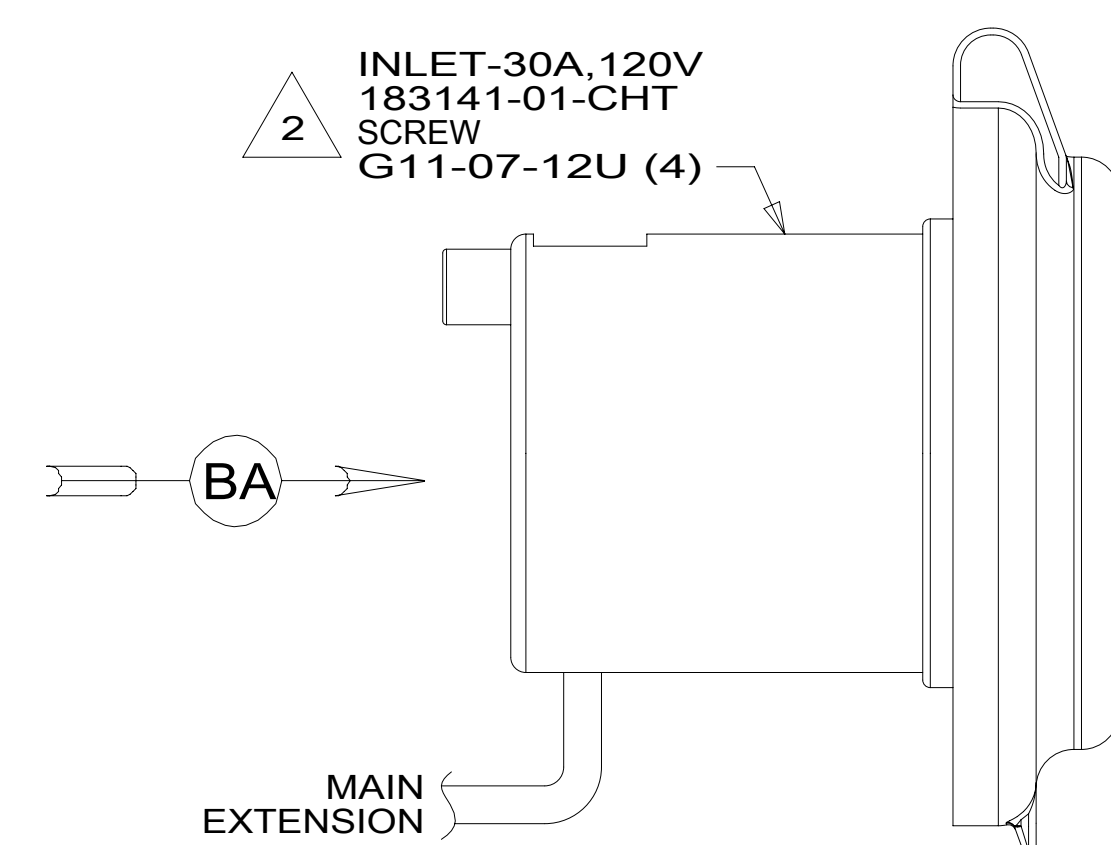
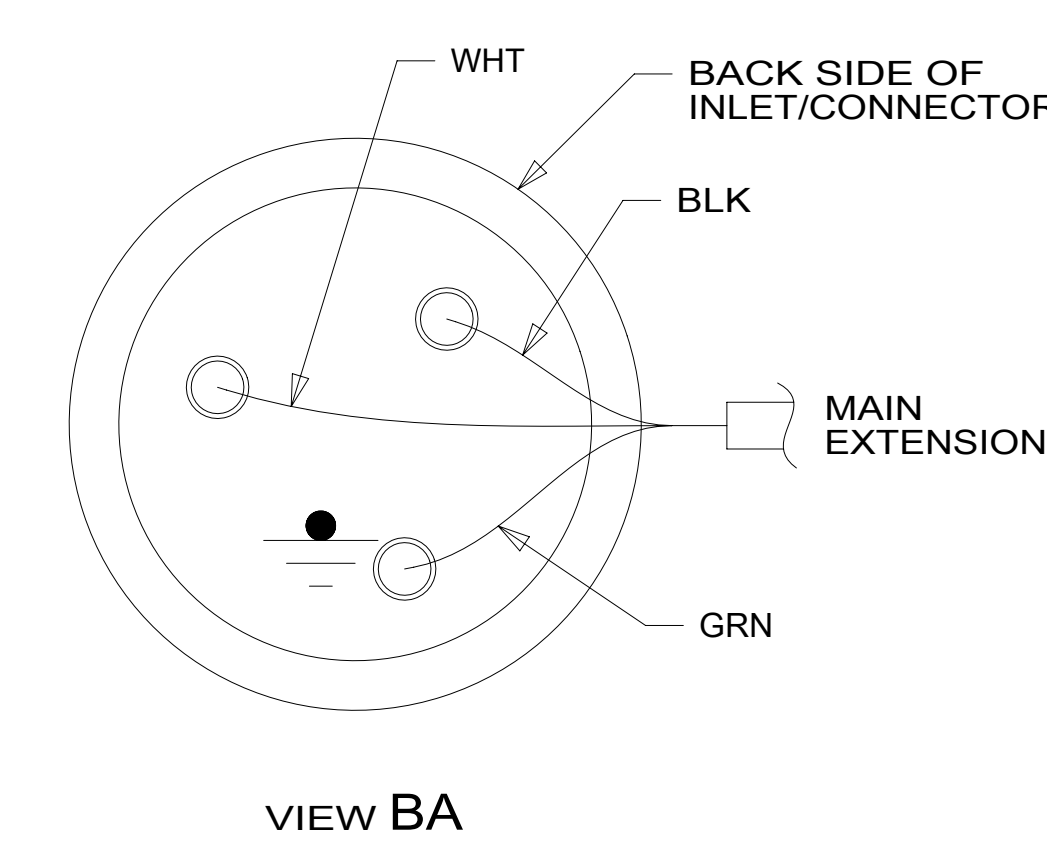
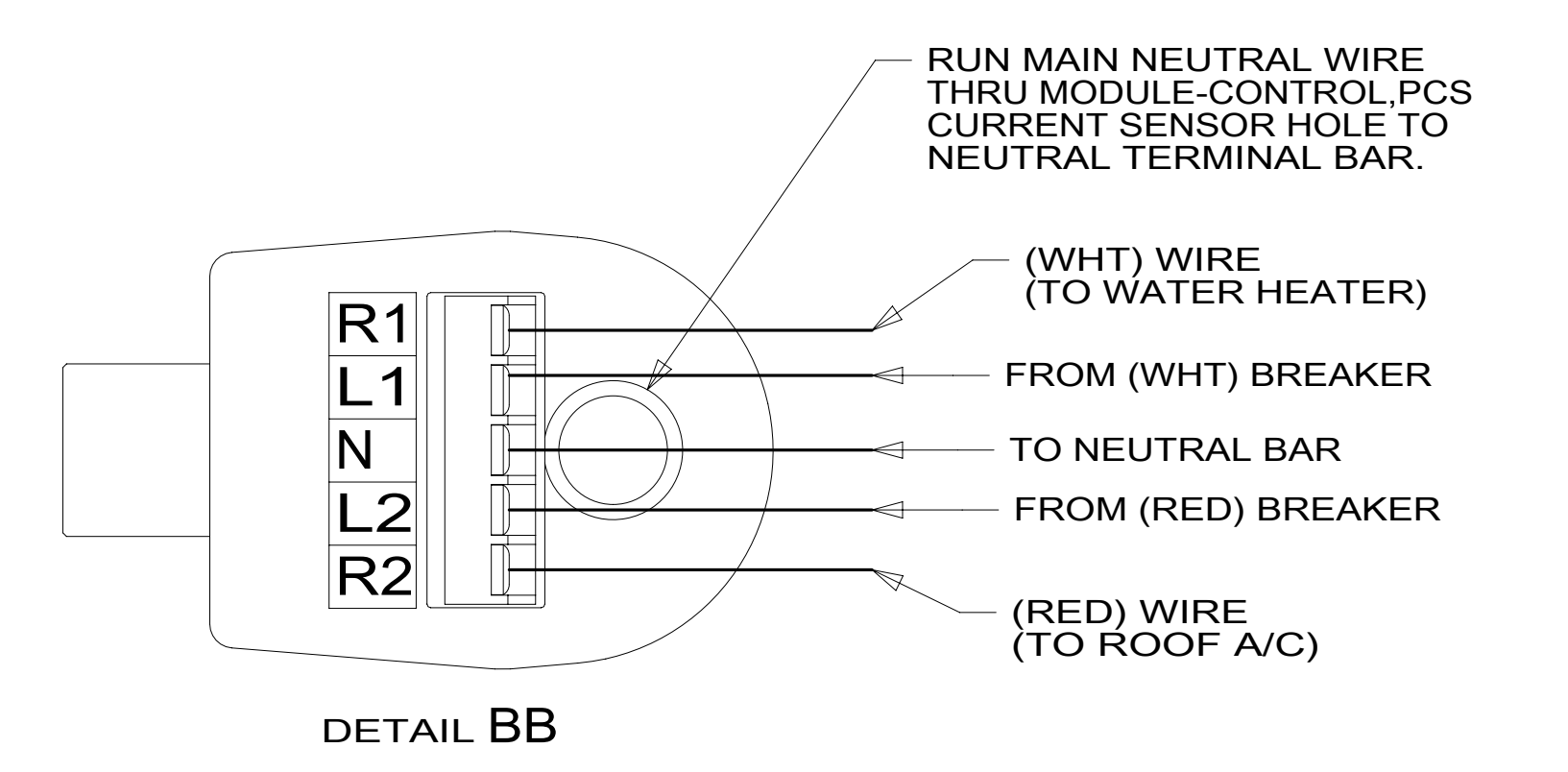
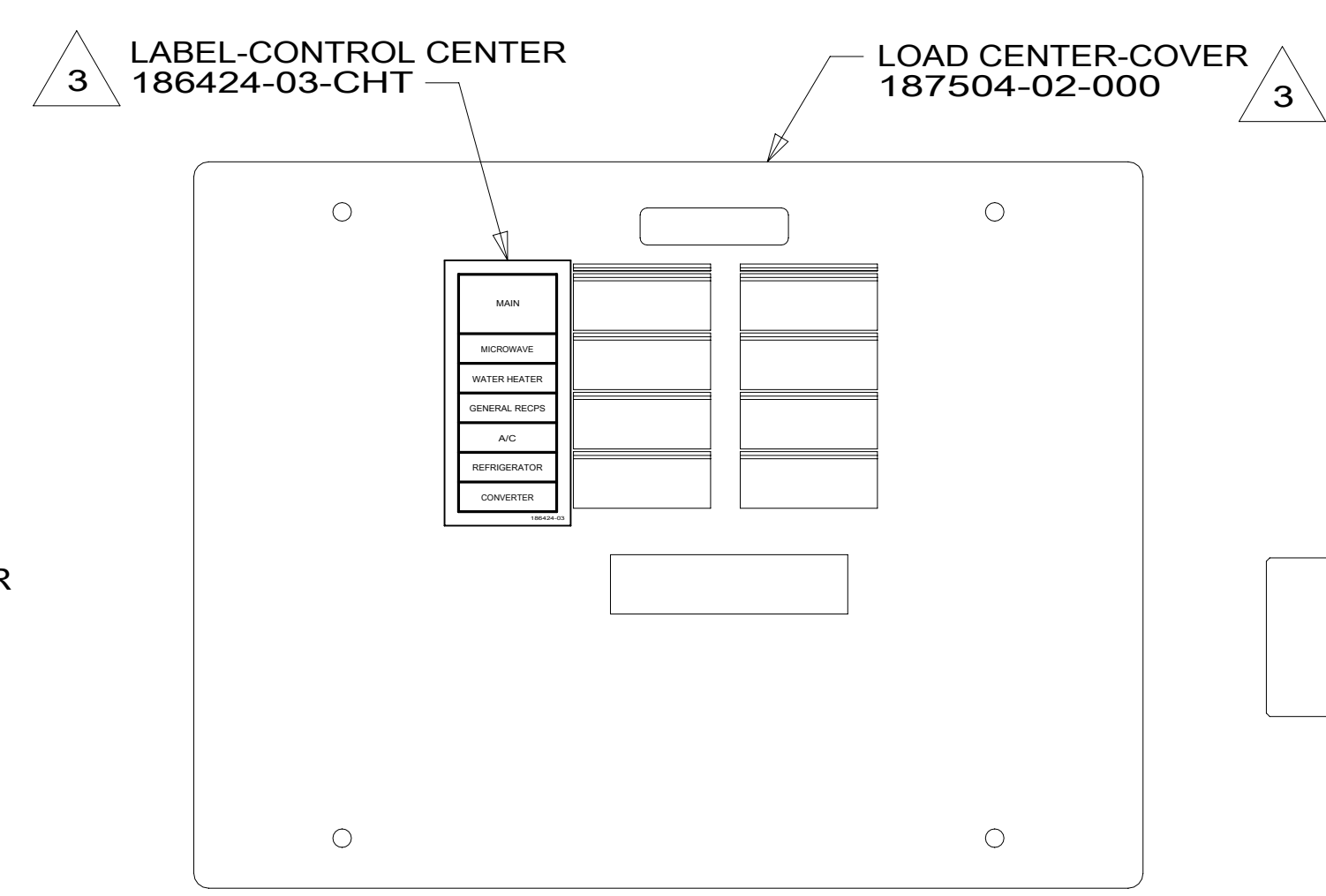
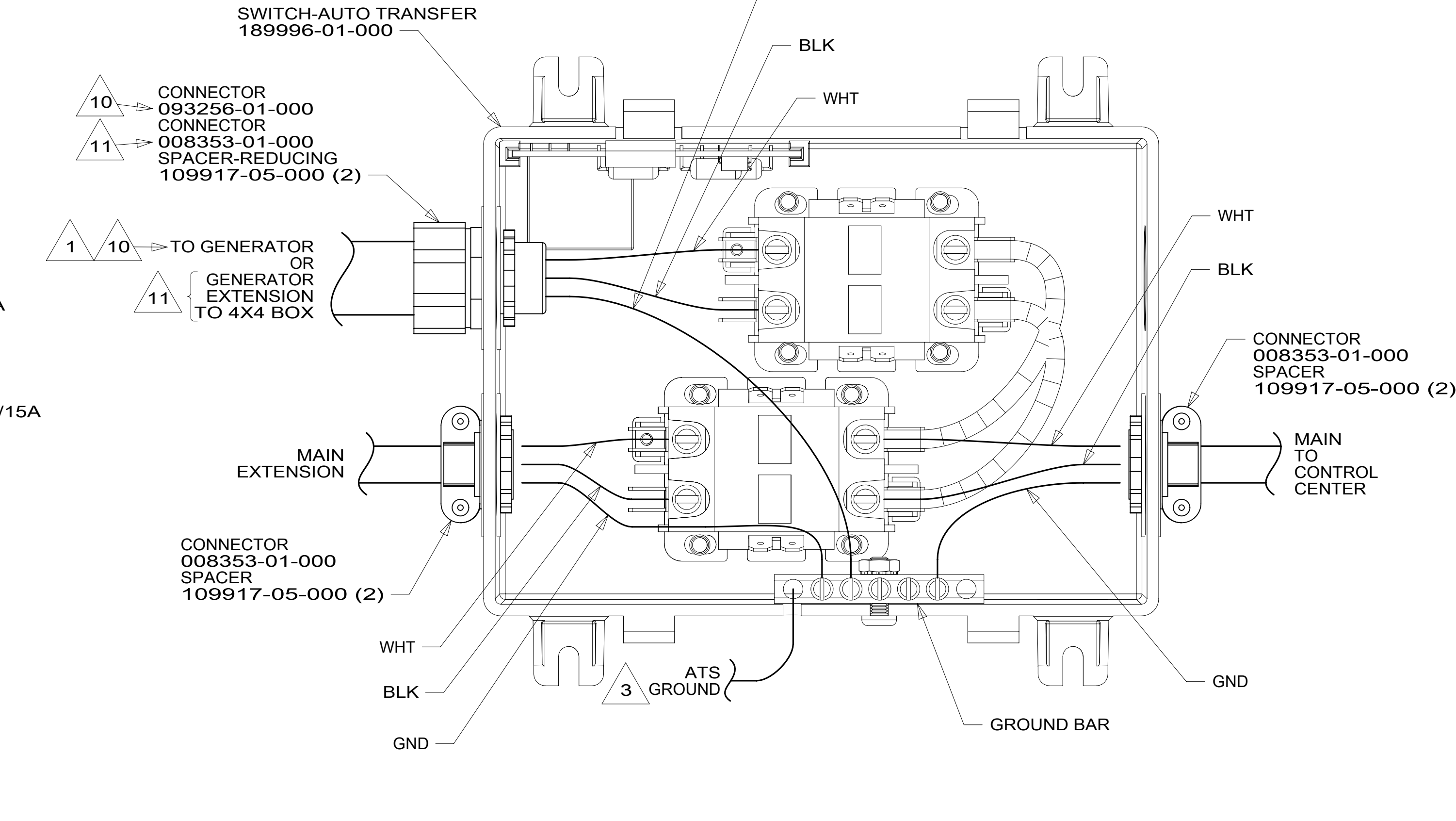
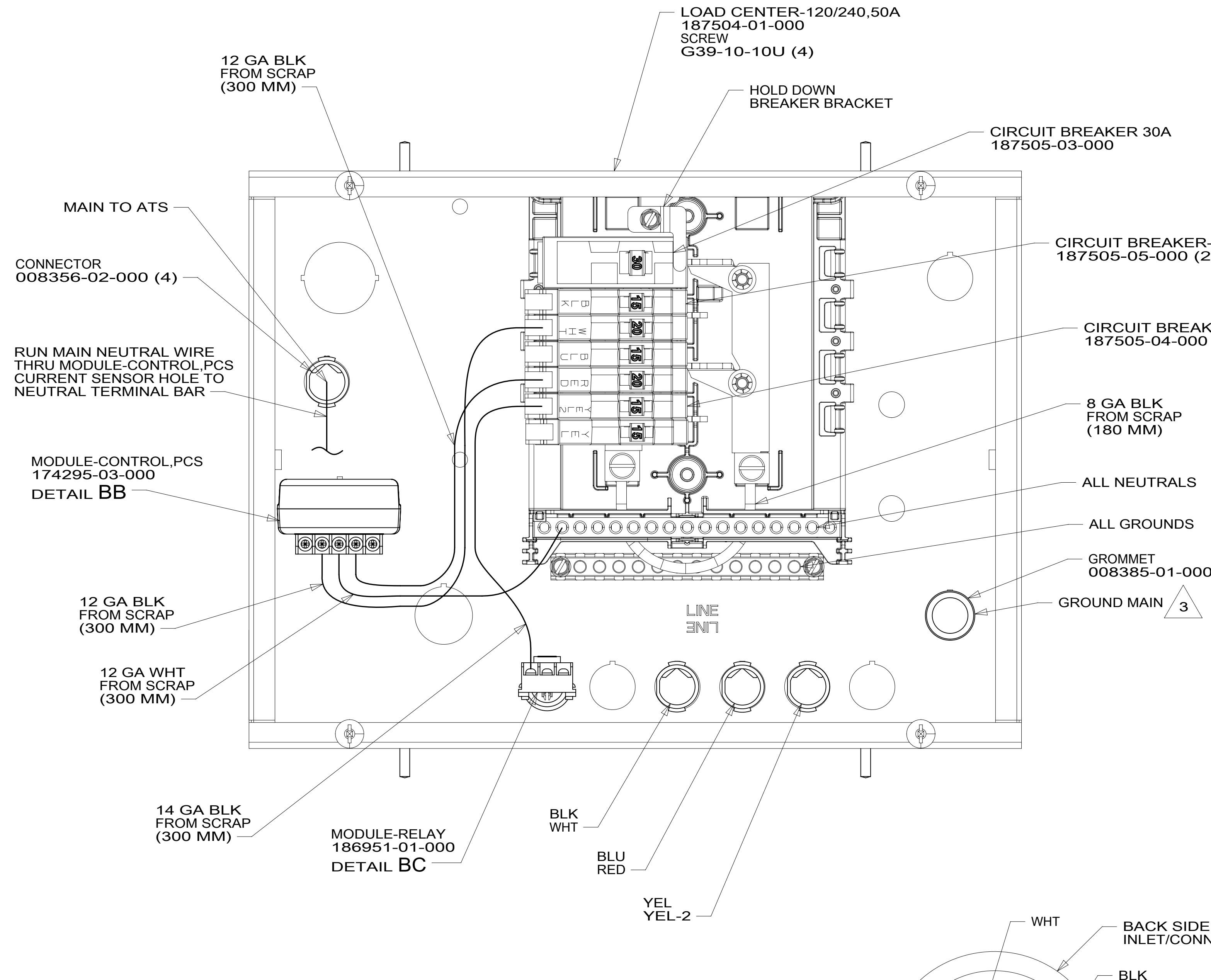
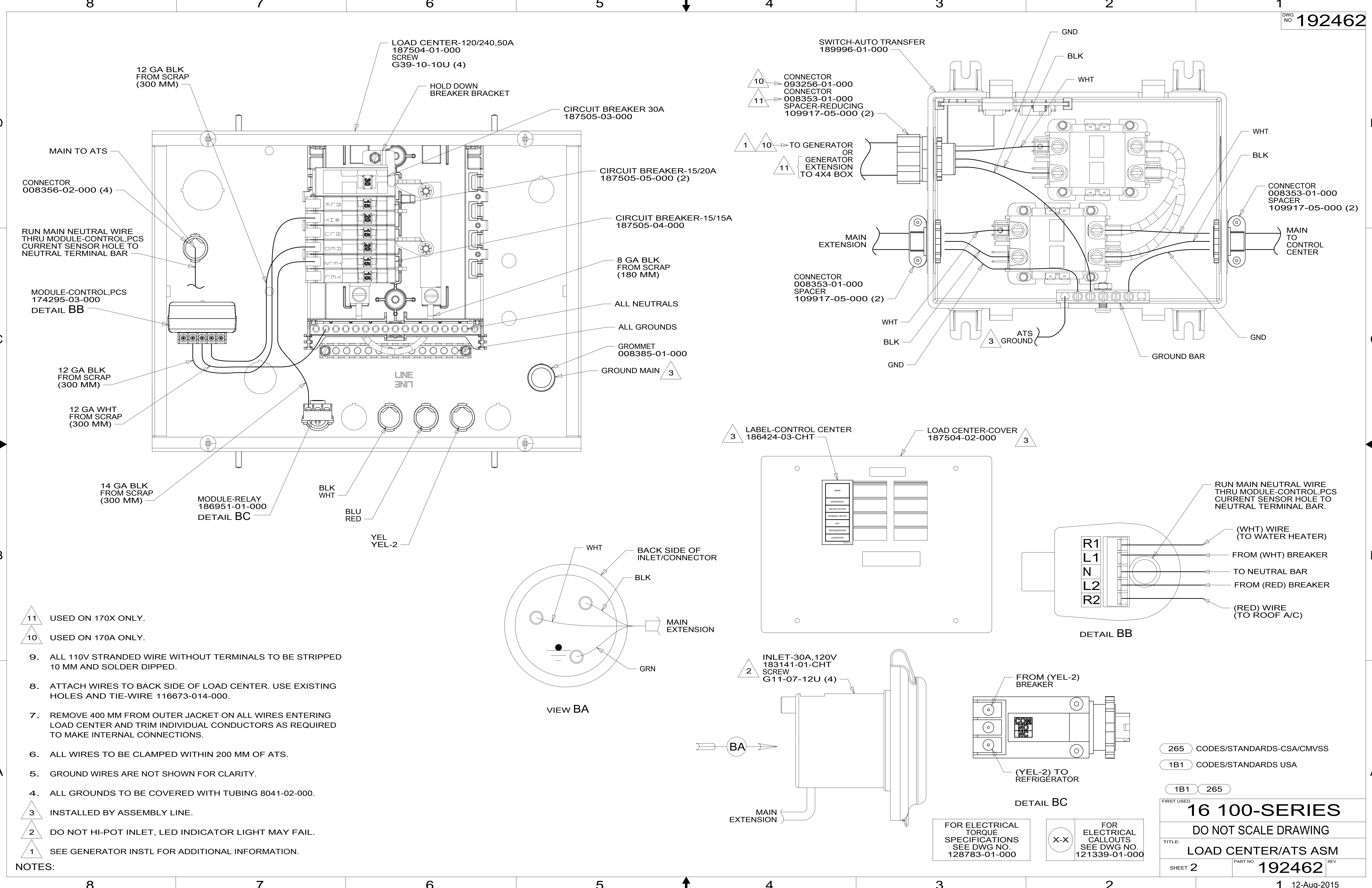


DFT-ORIG	ORIG. DATE
CHKR	ALL DIMENSIONS ARE IN MILLIMETERS
P.E.	
M.E.	
DSNR	FIRST USED
UNSPECIFIED TOLERANCES ARE:	
WHOLE DIM (X)	: 3
ONE-PLACE (X.X)	: 1.5
TWO-PLACE (X.XX)	: 0.50
ANGLE	: 1°
THIRD ANGLE PROJECTION	
DO NOT SCALE DRAWING	REFER TO ES0018 FOR FASTENER TIGHTENING GUIDELINES
TITLE: <b>LOAD CENTER/ATS ASM</b>	
SHEET 1 OF 2	PART NO <b>192462</b> REV

FOR ELECTRICAL TORQUE SPECIFICATIONS SEE DWG NO. 128783-01-000

FOR ELECTRICAL CALLOUTS SEE DWG NO. 121339-01-000

\*192462\*



- NOTES:
- 11 USED ON 170X ONLY.
  - 10 USED ON 170A ONLY.
  - 9. ALL 110V STRANDED WIRE WITHOUT TERMINALS TO BE STRIPPED 10 MM AND SOLDER DIPPED.
  - 8. ATTACH WIRES TO BACK SIDE OF LOAD CENTER. USE EXISTING HOLES AND TIE-WIRE 116673-014-000.
  - 7. REMOVE 400 MM FROM OUTER JACKET ON ALL WIRES ENTERING LOAD CENTER AND TRIM INDIVIDUAL CONDUCTORS AS REQUIRED TO MAKE INTERNAL CONNECTIONS.
  - 6. ALL WIRES TO BE CLAMPED WITHIN 200 MM OF ATS.
  - 5. GROUND WIRES ARE NOT SHOWN FOR CLARITY.
  - 4. ALL GROUNDS TO BE COVERED WITH TUBING 8041-02-000.
  - 3 INSTALLED BY ASSEMBLY LINE.
  - 2 DO NOT HI-POT INLET, LED INDICATOR LIGHT MAY FAIL.
  - 1 SEE GENERATOR INSTL FOR ADDITIONAL INFORMATION.

FOR ELECTRICAL TORQUE SPECIFICATIONS SEE DWG NO. 128783-01-000

X-X FOR ELECTRICAL CALLOUTS SEE DWG NO. 121339-01-000

265	CODES/STANDARDS-CSA/CMVSS
1B1	CODES/STANDARDS USA
1B1	265
FIRST USED	
<b>16 100-SERIES</b>	
DO NOT SCALE DRAWING	
TITLE: <b>LOAD CENTER/ATS ASM</b>	
SHEET 2	PART NO <b>192462</b> REV
12-Aug-2015	

\*192462