

DRAWING NO.	MODEL	SHEETS
192237-01	727K	1,2,3,4
192237-02	727D	1,2,3,4
192237-03	730J	1,2,3,4

RELEASE	REV/DATE	DWG NO	192237
REV ZONE	REVISION RECORD	DATE	DFT-ORIG

		727K	727D	730J	
RED	1B1	136135-07-060	136135-07-060	136135-07-057	
	265	136136-07-060	136136-07-060	136136-07-057	
YEL	1B1	136131-05-040	136131-05-040	136131-05-015	
	265	136134-05-040	136134-05-040	136134-05-015	
BLK	1B1	136135-06-044 136135-06-069	136135-06-044 136135-06-069	136135-06-014 136135-06-023	53B 1BT
	265	136136-06-044 136136-06-069	136136-06-044 136136-06-069	136136-06-014 136136-06-023	53B 1BT
BLK-2	1B1	136135-22-042	136135-22-042	136135-22-027	53B
	265	136136-22-042	136136-22-042	136136-22-027	53B
BRN	1B1	136131-03-011	136131-03-011	136131-03-010	2
	265	136134-03-011	136134-03-011	136134-03-010	2
BRN-2	1B1	136131-19-060	136131-19-245	136131-19-057	2
	265	136134-19-060	136134-19-245	136134-19-057	2
BLU	1B1	136131-02-190	136131-02-190	136131-02-150	
	265	136134-02-190	136134-02-190	136134-02-150	
WHT	1B1	136135-09-036	136135-09-036	136135-09-031	53B
	265	136136-09-036	136136-09-036	136136-09-031	53B
MAIN	1B1	136137-01-098	136137-01-105	136137-01-063	
	265	136138-01-098	136138-01-105	136138-01-063	

		727K	727D	730J	
GENERATOR CABLE ASM	1B1	164957-09-064	164957-09-064	164957-09-069	
	265	164957-10-064	164957-10-064	164957-10-069	
THROW IN #1	1B1	136131-19-007	136131-19-007	136131-19-007	3 2
	265	136134-19-007	136134-19-007	136134-19-007	3 2
THROW IN #2	1B1	136131-03-018	136131-03-018	136131-03-007	2 4
	265	136134-03-018	136134-03-018	136134-03-007	2 4
THROW IN #3	1B1	-----	-----	-----	
	265	-----	-----	-----	
THROW IN #4	1B1	136131-19-032	-----	136131-19-032	
	265	136134-19-032	-----	136134-19-032	
THROW IN #5	1B1	136131-19-018	136131-19-018	136131-19-009	2 4
	265	136134-19-018	136134-19-018	136134-19-009	2 4
ATS GND	1B1	136145-01-015	136145-01-015	136145-01-012	
GROUND	265	136145-02-022	136145-02-022	136145-02-015	

- 1BT WATER HEATER, TANKLESS
- 53B WTR HTR-6GAL ELECTRIC/LP GAS
- 265 CODES/STANDARDS-CSA/CMVSS
- 1B1 CODES/STANDARDS USA

1B1 265

WINNEBAGO COPYRIGHT 2014 WINNEBAGO INDUSTRIES, INC.

DFT-ORIG	ORIG. DATE
CHKR	ALL DIMENSIONS ARE IN MILLIMETERS
P.E.	
M.E.	FIRST USED
DSNR	16 700-SERIES

UNSPECIFIED TOLERANCES ARE:
 WHOLE DIM (X) : 3
 ONE-PLACE (X.X) : 1.5
 TWO-PLACE (X.XX) : 0.50
 ANGLE : 1'

THIRD ANGLE PROJECTION

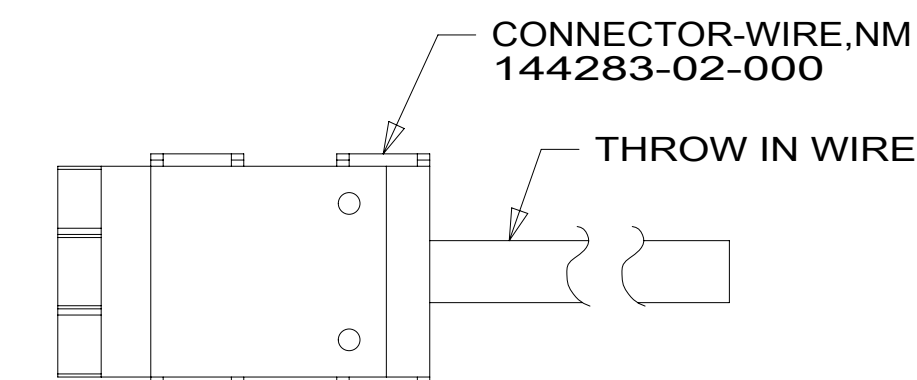
DO NOT SCALE DRAWING REFER TO ES0018 FOR FASTENER TIGHTENING GUIDELINES

TITLE: **LOAD CENTER/ATS ASM**

SHEET 1 OF 4 PART NO **192237** REV

- 4 FOR INVERTER INFORMATION SEE SHEET 4.
- 3 WITH BLACK PERMANENT MARKER, IDENTIFY MOLEX HOUSING WITH #1.
- 2 FOR CONNECTOR INSTALLATION SEE DETAIL AA.

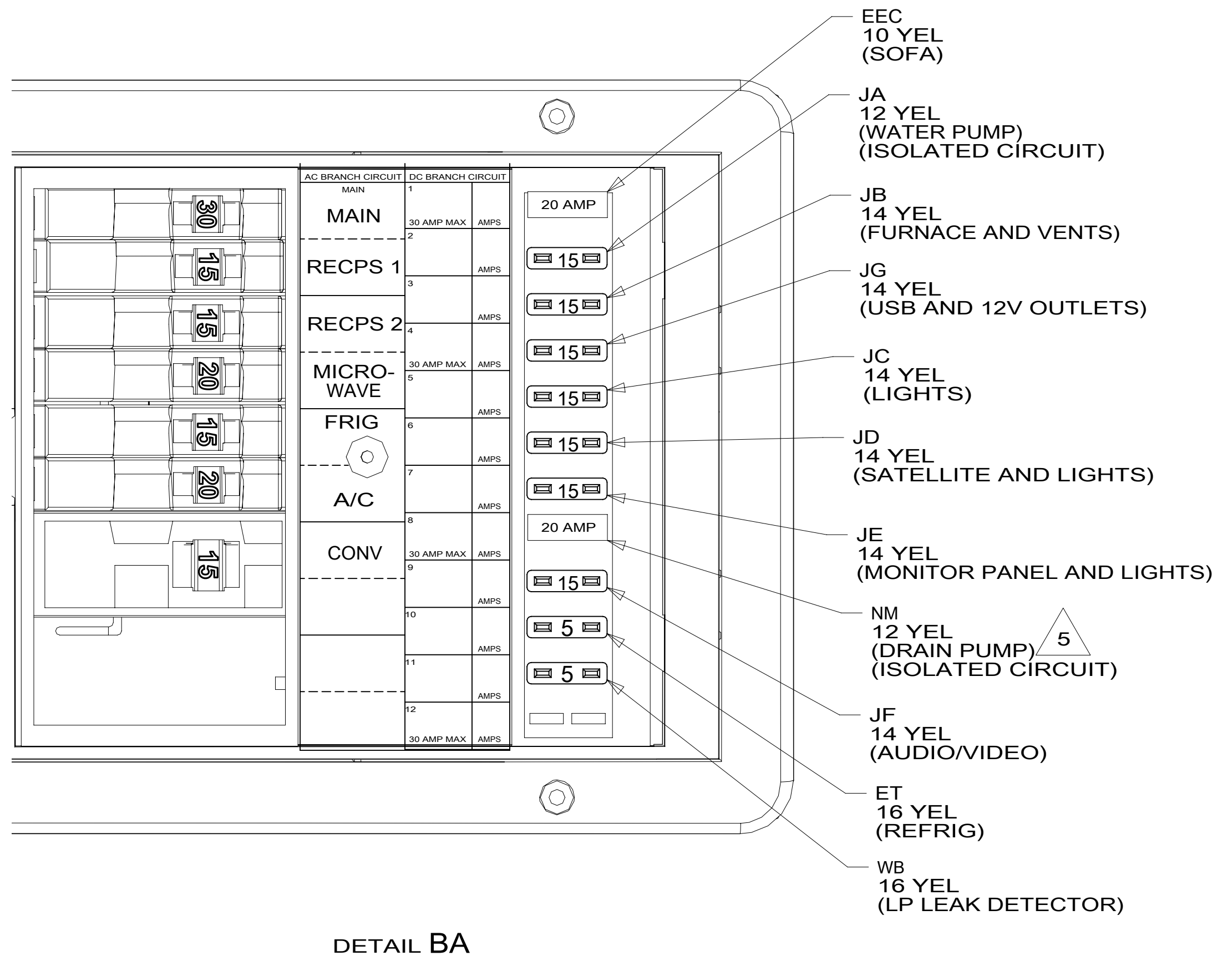
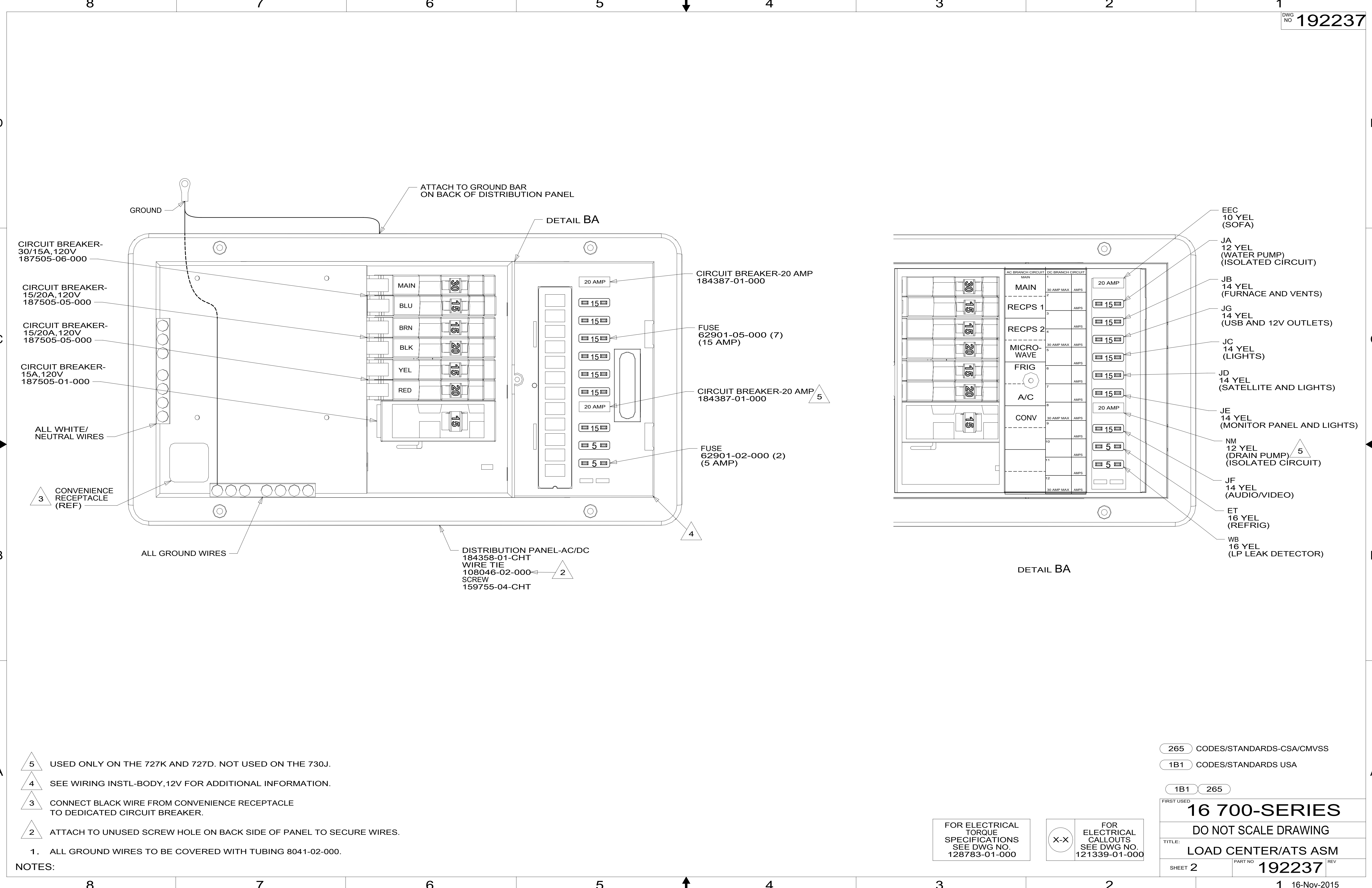
NOTES:
 1. ALL GROUND WIRES TO BE COVERED WITH TUBING 8041-02-000.



FOR ELECTRICAL TORQUE SPECIFICATIONS SEE DWG NO. 128783-01-000

FOR ELECTRICAL CALLOUTS SEE DWG NO. 121339-01-000

192237



- 5 USED ONLY ON THE 727K AND 727D. NOT USED ON THE 730J.
 - 4 SEE WIRING INSTL-BODY, 12V FOR ADDITIONAL INFORMATION.
 - 3 CONNECT BLACK WIRE FROM CONVENIENCE RECEPTACLE TO DEDICATED CIRCUIT BREAKER.
 - 2 ATTACH TO UNUSED SCREW HOLE ON BACK SIDE OF PANEL TO SECURE WIRES.
1. ALL GROUND WIRES TO BE COVERED WITH TUBING 8041-02-000.

265 CODES/STANDARDS-CSA/CMVSS
 1B1 CODES/STANDARDS USA

1B1 265

FIRST USED
16 700-SERIES
 DO NOT SCALE DRAWING

TITLE:
LOAD CENTER/ATS ASM

SHEET 2 PART NO **192237** REV

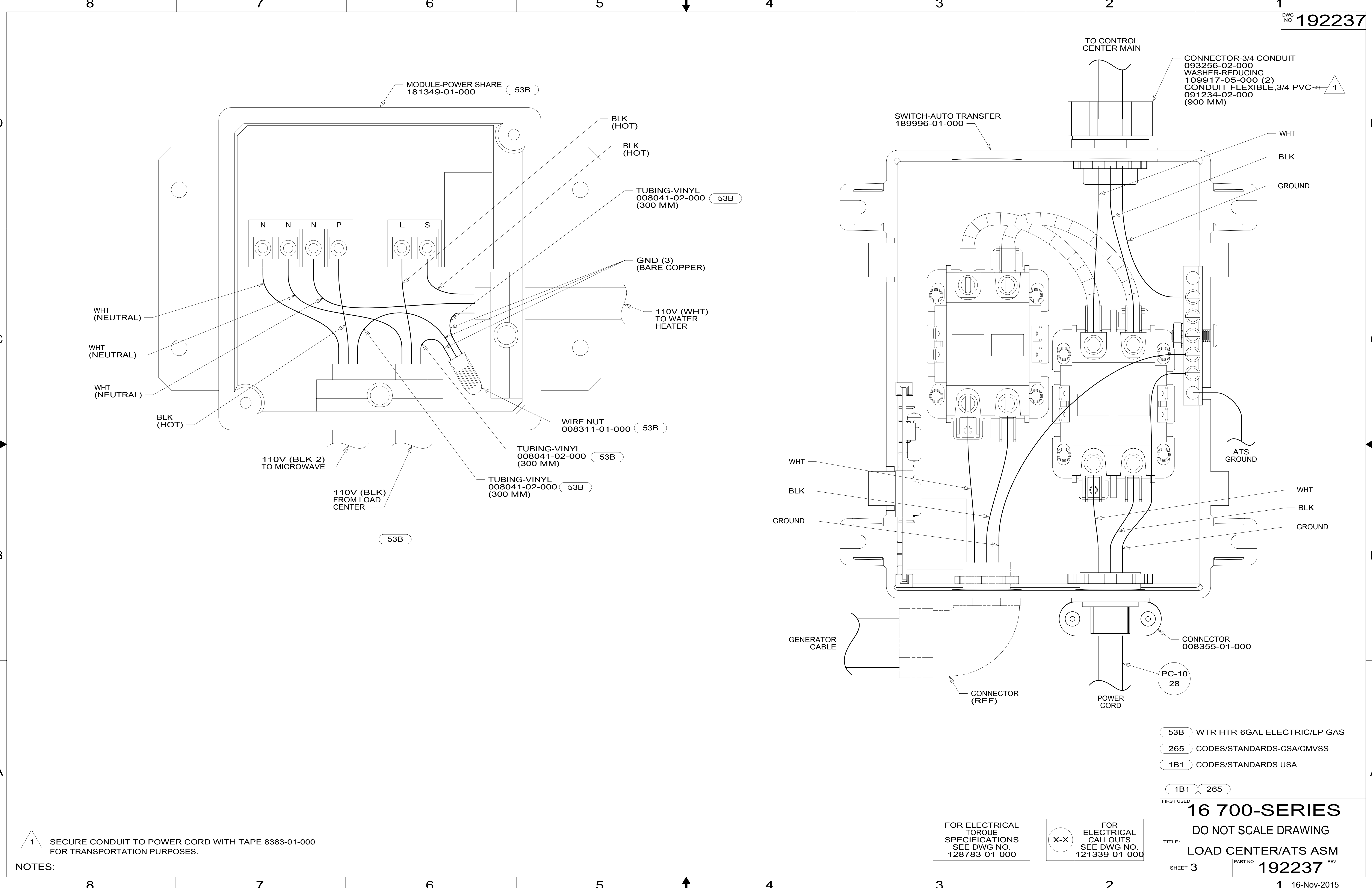
16-Nov-2015

FOR ELECTRICAL TORQUE SPECIFICATIONS SEE DWG NO. 128783-01-000

X-X

FOR ELECTRICAL CALLOUTS SEE DWG NO. 121339-01-000

192237



1 SECURE CONDUIT TO POWER CORD WITH TAPE 8363-01-000 FOR TRANSPORTATION PURPOSES.

NOTES:

FOR ELECTRICAL TORQUE SPECIFICATIONS SEE DWG NO. 128783-01-000

FOR ELECTRICAL CALLOUTS SEE DWG NO. 121339-01-000

- 53B WTR HTR-6GAL ELECTRIC/LP GAS
- 265 CODES/STANDARDS-CSA/CMVSS
- 1B1 CODES/STANDARDS USA

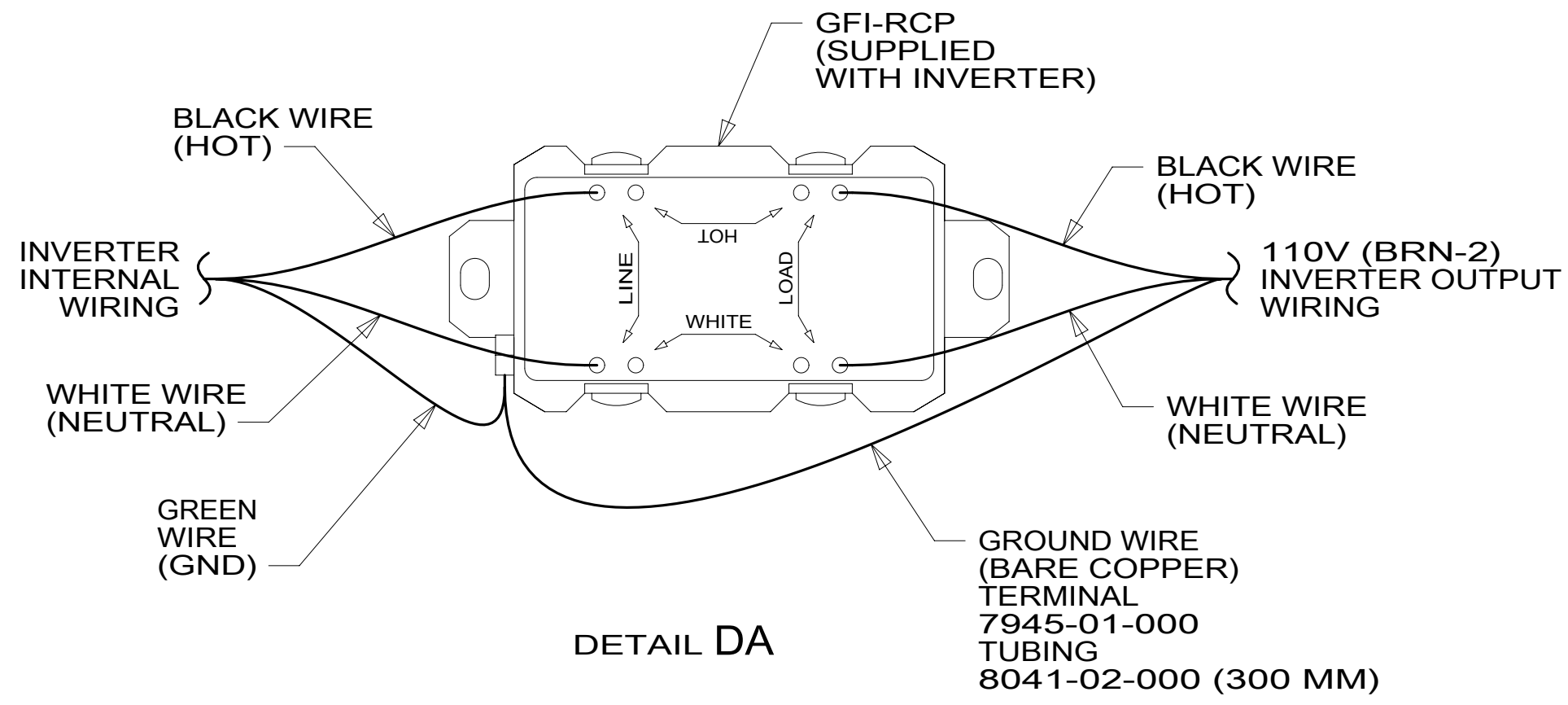
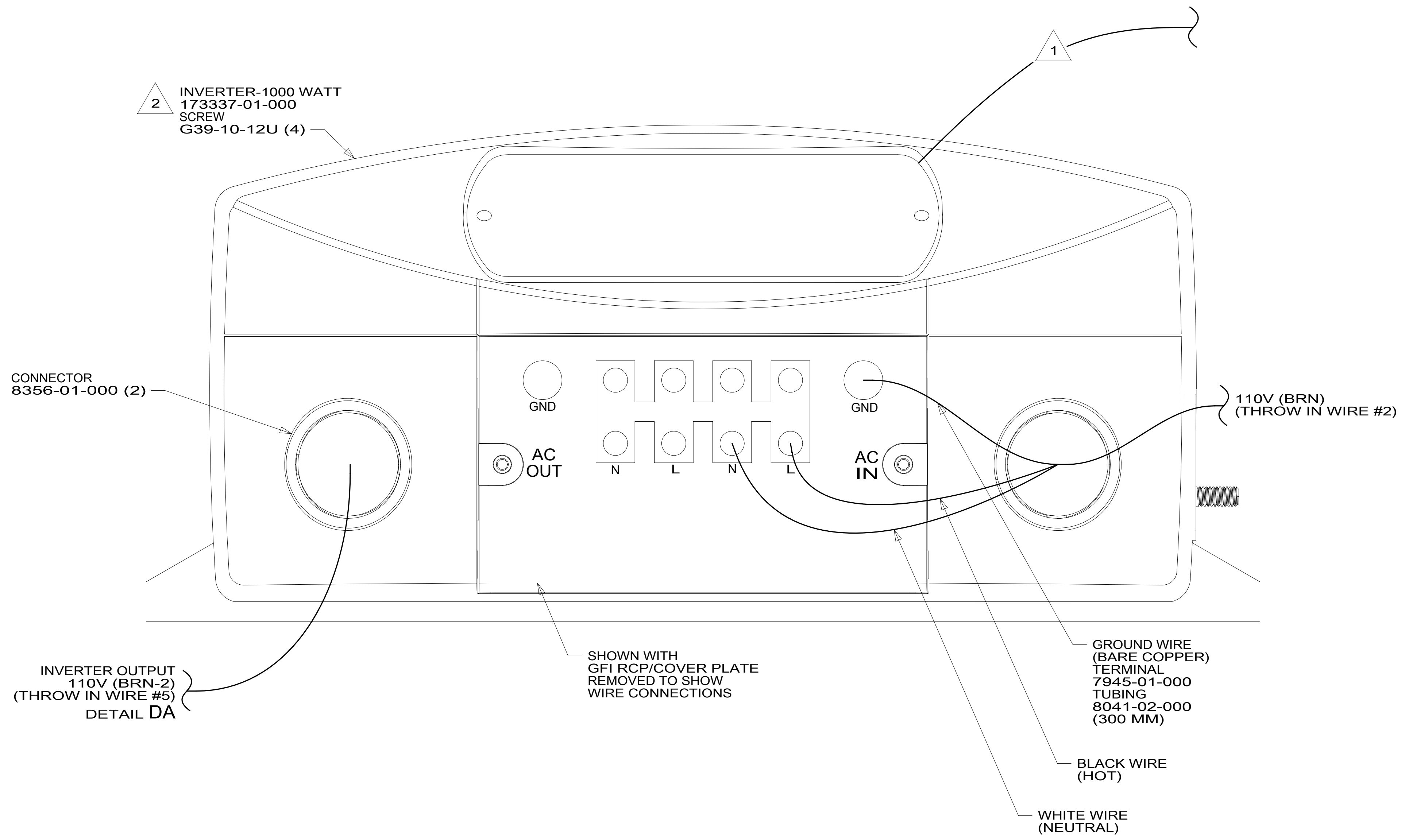
1B1 265

FIRST USED
16 700-SERIES

DO NOT SCALE DRAWING

TITLE: **LOAD CENTER/ATS ASM**

SHEET 3 PART NO **192237** REV



NOTES:

2 INVERTER SUPPLIED WITH REMOTE PANEL. SEND PANEL TO MANUFACTURING LINE.

1 ON 730C COVER REMOTE PANEL COMMUNICATION CABLE WITH CONDUIT-CONVOLUTE 41953-06-000 (4600 MM) STARTING 100 MM FROM INVERTER. SECURE BOTH ENDS WITH TAPE 8363-01-000.

FOR ELECTRICAL TORQUE SPECIFICATIONS SEE DWG NO. 128783-01-000

FOR ELECTRICAL CALLOUTS SEE DWG NO. 121339-01-000

- 265 CODES/STANDARDS-CSA/CMVSS
- 1B1 CODES/STANDARDS USA
- 1B1 265

FIRST USED	
16 700-SERIES	
DO NOT SCALE DRAWING	
TITLE: LOAD CENTER/ATS ASM	
SHEET 4	PART NO 192237 REV

192237