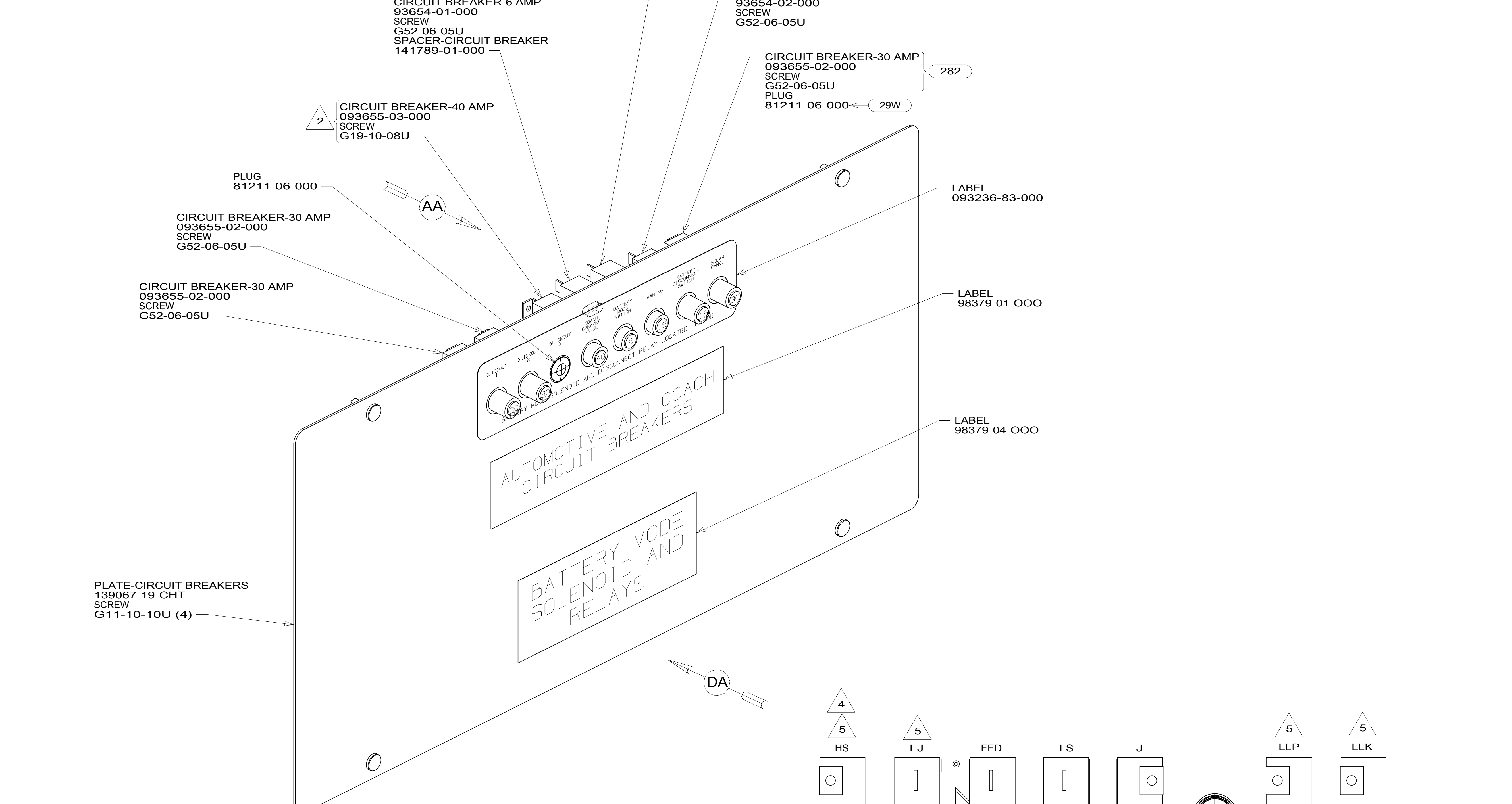
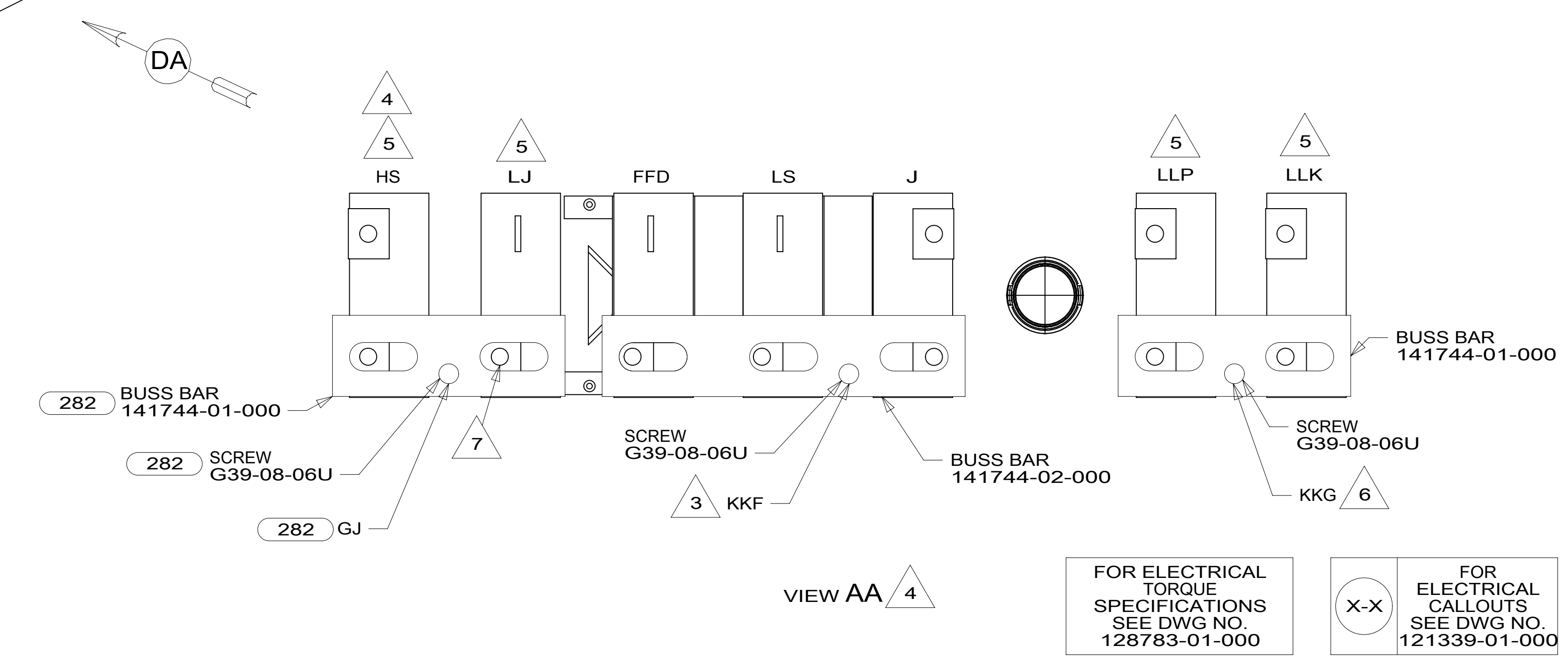


DRAWING NO.	MODEL	SHEETS
192170-01	727K	1,4
192170-02	727D	2,4
192170-03	730J	3,4

RELEASE	REV/DATE	DWG NO	192170
REV ZONE	REVISION RECORD	DATE	DTR-ORIG



- NOTES:
- 7 CONNECT GJ HERE WITH 29W
 - 6 WIRE IS MARKED WITH PURPLE TAPE.
 - 5 CIRCUIT IS FROM WIRE ASM-CHASSIS.
 - 4 TAPE BACK UNUSED WIRES TO HARNESS.
 - 3 WIRE IS MARKED WITH YELLOW TAPE.
 - 2 REPLACE EXISTING SCREW TO PROPERLY ATTACH BREAKER TO BUSS BAR.
1. SECURE CONDUIT 41953, TAB AS REQUIRED, OVER ALL WIRES IN CONTACT WITH SHARP EDGES.



- 282 SOLAR PANEL - 100 WATT
- 29W SOLAR PANEL/BATTERY CHRGR W/O
- 265 CODES/STANDARDS-CSA/CMVSS
- 1B1 CODES/STANDARDS USA

WINNEBAGO COPYRIGHT 2014 WINNEBAGO INDUSTRIES, INC.

DTR	ORIG. DATE
CHGR	ALL DIMENSIONS ARE IN MILLIMETERS
P.E.	FIRST USED
M.E.	16 700-SERIES
DSNR	

UNSPECIFIED TOLERANCES ARE:

WHOLE DIM (X)	: 3
ONE-PLACE (X.X)	: 1.5
TWO-PLACE (X.XX)	: 0.50
ANGLE	: 1°

THIRD ANGLE PROJECTION

DO NOT SCALE DRAWING REFER TO ES0018 FOR FASTENER TIGHTENING GUIDELINES

TITLE: CHASSIS ELECTRICAL BOX ASM

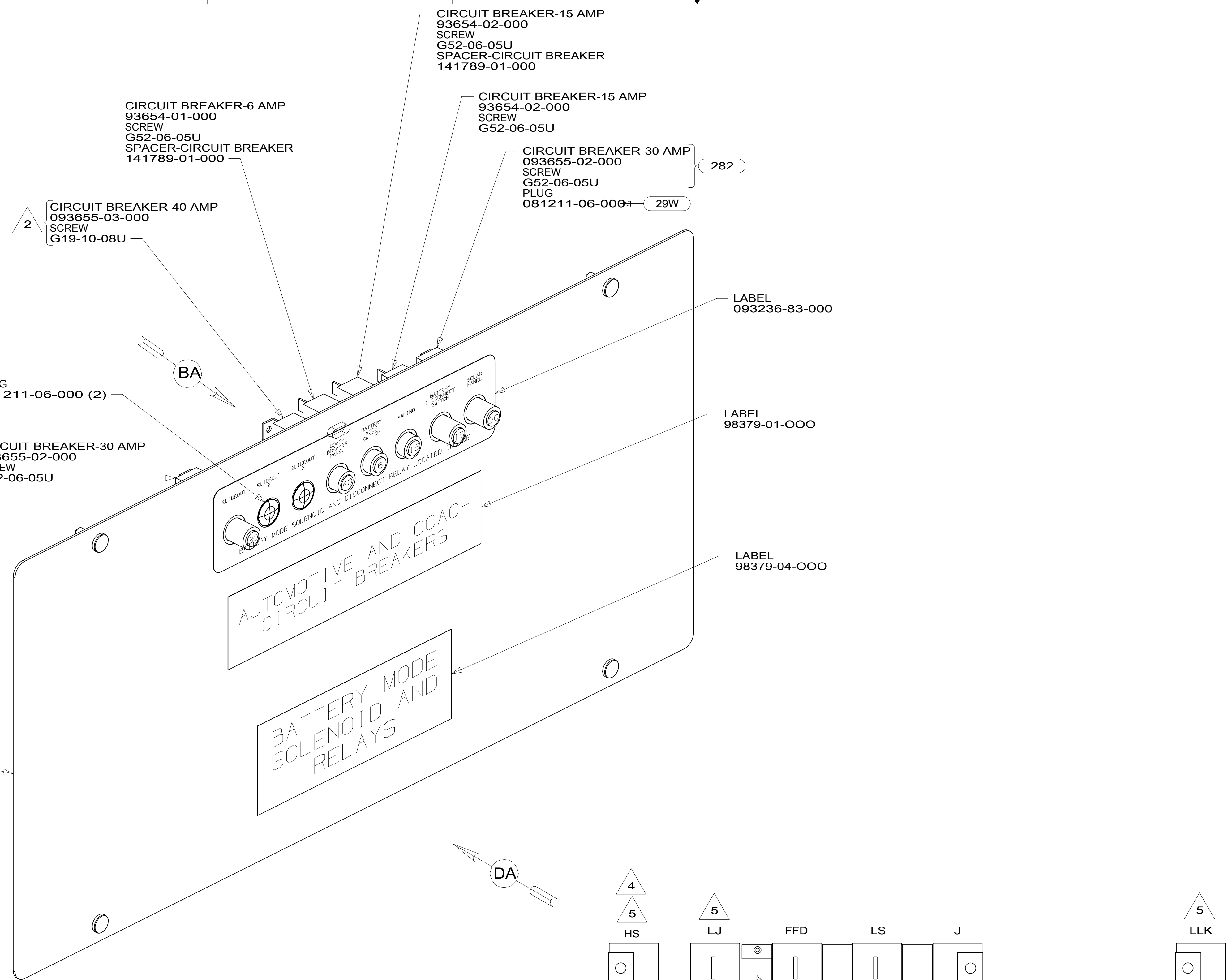
SHEET 1 OF 4 PART NO 192170 REV

REF: 1 10-Jul-2015

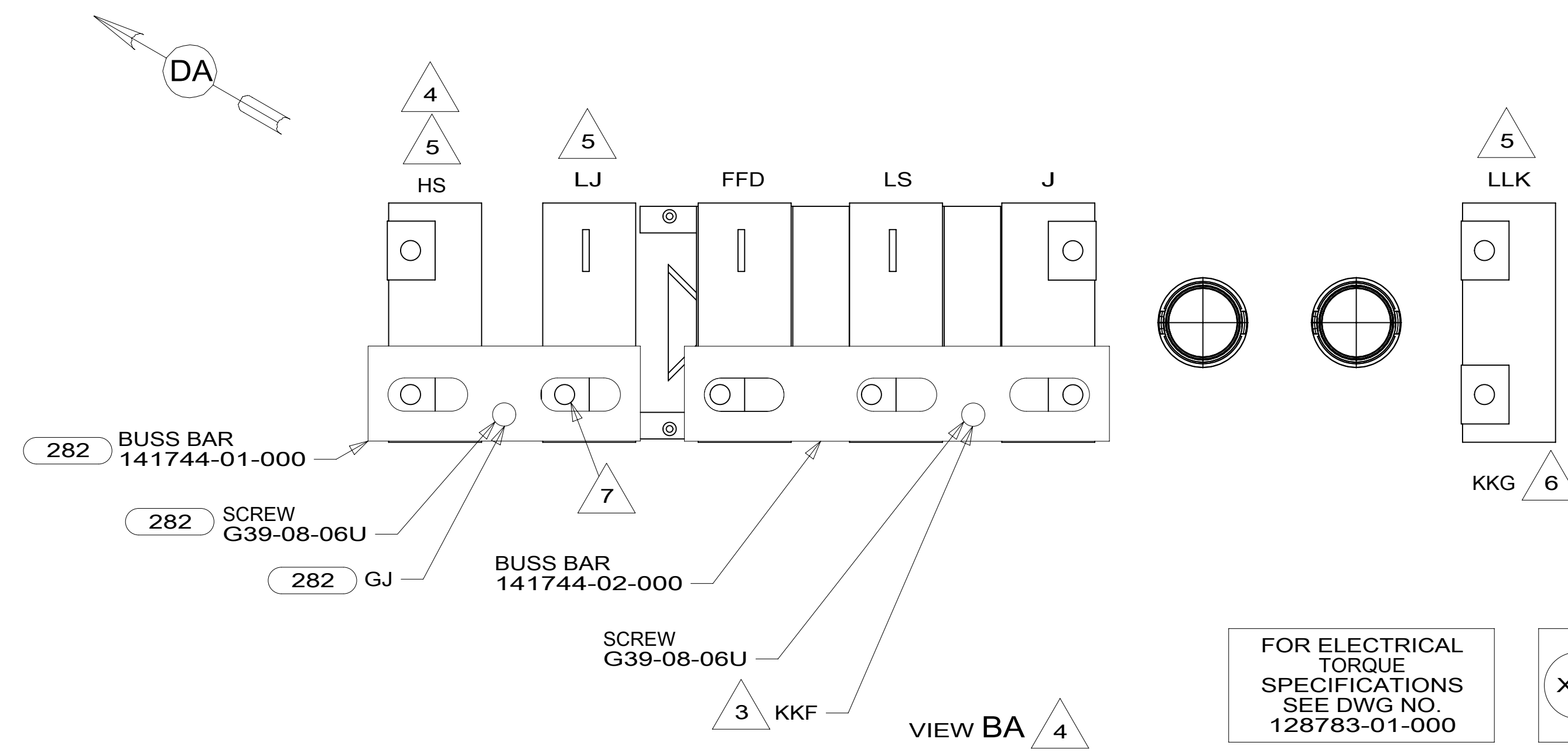
FOR ELECTRICAL TORQUE SPECIFICATIONS SEE DWG NO. 128783-01-000

FOR ELECTRICAL CALLOUTS SEE DWG NO. 121339-01-000

192170



- NOTES:
- 7 CONNECT GJ HERE WITH 29W
 - 6 WIRE IS MARKED WITH PURPLE TAPE.
 - 5 CIRCUIT IS FROM WIRE ASM-CHASSIS.
 - 4 TAPE BACK UNUSED WIRES TO HARNESS.
 - 3 WIRE IS MARKED WITH YELLOW TAPE.
 - 2 REPLACE EXISTING SCREW TO PROPERLY ATTACH BREAKER TO BUSS BAR.
1. SECURE CONDUIT 41953, TAB AS REQUIRED, OVER ALL WIRES IN CONTACT WITH SHARP EDGES.



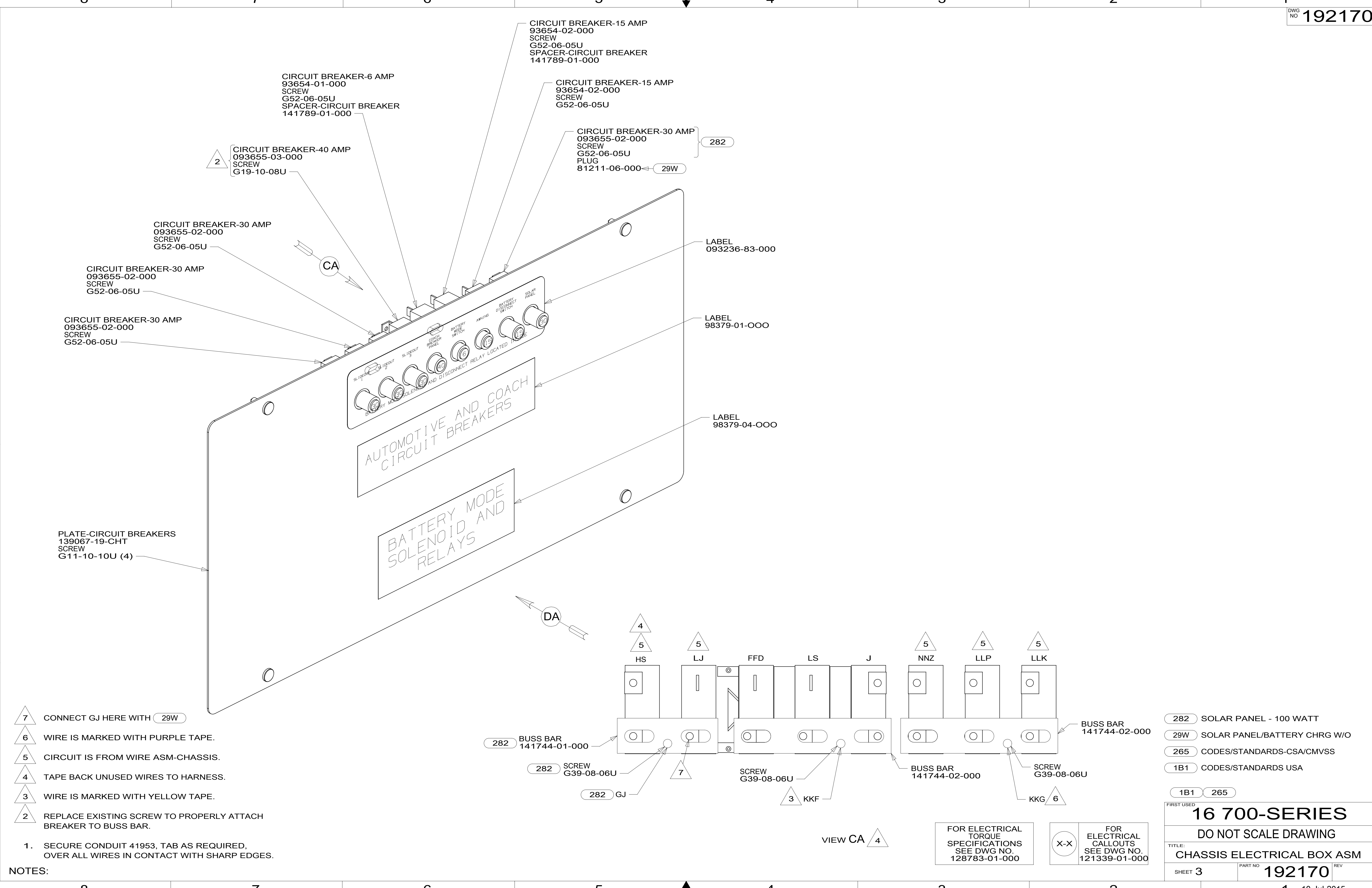
- 282 SOLAR PANEL - 100 WATT
- 29W SOLAR PANEL/BATTERY CHRGR W/O
- 265 CODES/STANDARDS-CSA/CMVSS
- 1B1 CODES/STANDARDS USA

FIRST USED	
16 700-SERIES	
DO NOT SCALE DRAWING	
TITLE: CHASSIS ELECTRICAL BOX ASM	
SHEET 2	PART NO 192170 REV
10-Jul-2015	

FOR ELECTRICAL TORQUE SPECIFICATIONS SEE DWG NO. 128783-01-000

FOR ELECTRICAL CALLOUTS SEE DWG NO. 121339-01-000

*192170 *A



- NOTES:
- 7 CONNECT GJ HERE WITH 29W
 - 6 WIRE IS MARKED WITH PURPLE TAPE.
 - 5 CIRCUIT IS FROM WIRE ASM-CHASSIS.
 - 4 TAPE BACK UNUSED WIRES TO HARNESS.
 - 3 WIRE IS MARKED WITH YELLOW TAPE.
 - 2 REPLACE EXISTING SCREW TO PROPERLY ATTACH BREAKER TO BUSS BAR.
1. SECURE CONDUIT 41953, TAB AS REQUIRED, OVER ALL WIRES IN CONTACT WITH SHARP EDGES.

- 282 SOLAR PANEL - 100 WATT
- 29W SOLAR PANEL/BATTERY CHRГ W/O
- 265 CODES/STANDARDS-CSA/CMVSS
- 1B1 CODES/STANDARDS USA

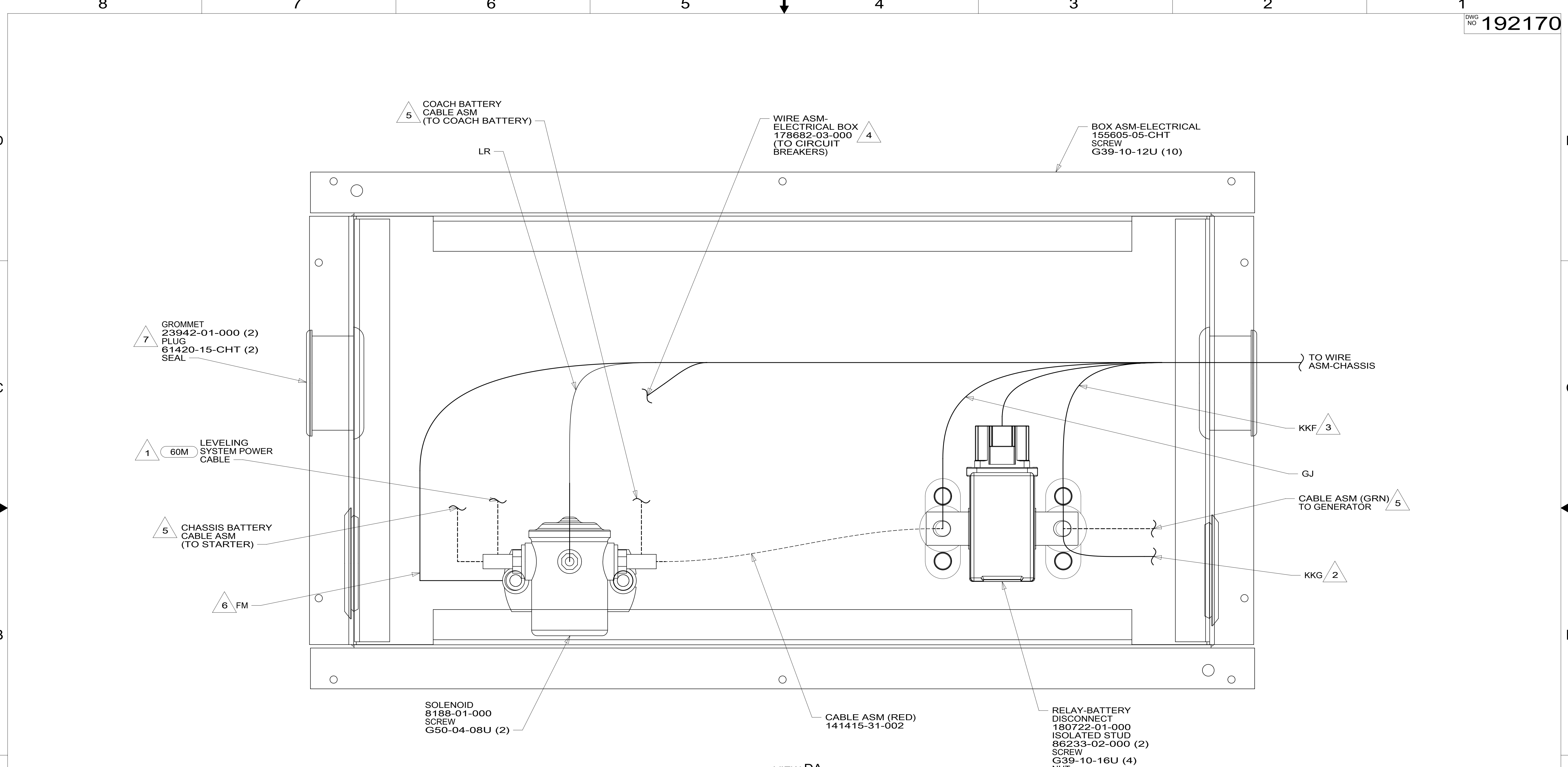
FIRST USED	
16 700-SERIES	
DO NOT SCALE DRAWING	
TITLE: CHASSIS ELECTRICAL BOX ASM	
SHEET 3	PART NO 192170 REV
10-Jul-2015	

FOR ELECTRICAL TORQUE SPECIFICATIONS SEE DWG NO. 128783-01-000

FOR ELECTRICAL CALLOUTS SEE DWG NO. 121339-01-000

VIEW CA 4

192170



VIEW DA

- NOTES:
- 7 LOCATION OF GROMMET & PLUG DEPENDENT ON LOCATION OF BOX.
 - 6 SECURE WITH SOLENOID MOUNTING SCREW.
 - 5 SEE WIRING INSTL-CHASSIS FOR ADDITIONAL INFORMATION.
 - 4 TAPE BACK UNUSED WIRES TO HARNESS.
 - 3 WIRE IS MARKED WITH YELLOW TAPE.
 - 2 WIRE IS MARKED WITH PURPLE TAPE.
 - 1 SEE LEVELING SYSTEM INSTL FOR ADDITIONAL INFORMATION.

- 60M HYDRAULIC LEVEL JACKS-AUTO
- 265 CODES/STANDARDS-CSA/CMVSS
- 1B1 CODES/STANDARDS USA

1B1	265
FIRST USED	
16 700-SERIES	
DO NOT SCALE DRAWING	
TITLE: CHASSIS ELECTRICAL BOX ASM	
SHEET 4	PART NO 192170 REV
10-Jul-2015	

FOR ELECTRICAL TORQUE SPECIFICATIONS SEE DWG NO. 128783-01-000

FOR ELECTRICAL CALLOUTS SEE DWG NO. 121339-01-000

192170