

DRAWING NO.	MODEL	SHEETS
191921-01	P38P	1,2,3,5
191921-02	P40R	1,2,3,5
191921-03	P36M	1,2,4,5
191921-04	P42E	1,2,3,5

		P38P	P40R	P36M	P42E
RED	1B1	136135-07-072	136135-07-090	136135-07-085	136135-07-090
	265	136136-07-072	136136-07-090	136136-07-085	136136-07-090
GRN	1B1	136135-08-072	136135-08-090	136135-08-085	136135-08-090
	265	136136-08-072	136136-08-090	136136-08-085	136136-08-090
LT BLU	1B1	136135-21-072	136135-21-090		136135-21-090
	265	136136-21-072	136136-21-090		136136-21-090
YEL	1B1	136131-05-065	136131-05-015	136131-05-054	136131-05-015
	265	136134-05-065	136134-05-015	136134-05-054	136134-05-015
GLD	1B1	136131-10-060	136131-10-070	136131-10-054	136131-10-070
	265	136134-10-060	136134-10-070	136134-10-054	136134-10-070
GLD-2	1B1	136131-20-060	136131-20-070	136131-20-054	136131-20-070
	265	136134-20-060	136134-20-070	136134-20-054	136134-20-070
WHT	1B1	136135-09-015	136135-09-058	136135-09-060	136135-09-070
	265	136136-09-015	136136-09-058	136136-09-060	136136-09-070
BLU	1B1	136131-02-212	136131-02-110	136131-02-085	136131-02-070
	265	136134-02-212	136134-02-110	136134-02-085	136134-02-070
BRN	1B1	136131-03-090	136131-03-210	136131-03-198	136131-03-160
	265	136134-03-090	136134-03-210	136134-03-198	136134-03-160
PUR	1B1	136131-04-105	136131-04-095	136131-04-165	136131-04-100
	265	136134-04-105	136134-04-095	136134-04-165	136134-04-100
ORG	1B1	136131-16-125	136131-16-120	136131-16-170	136131-16-140
	265	136134-16-125	136134-16-120	136134-16-170	136134-16-140

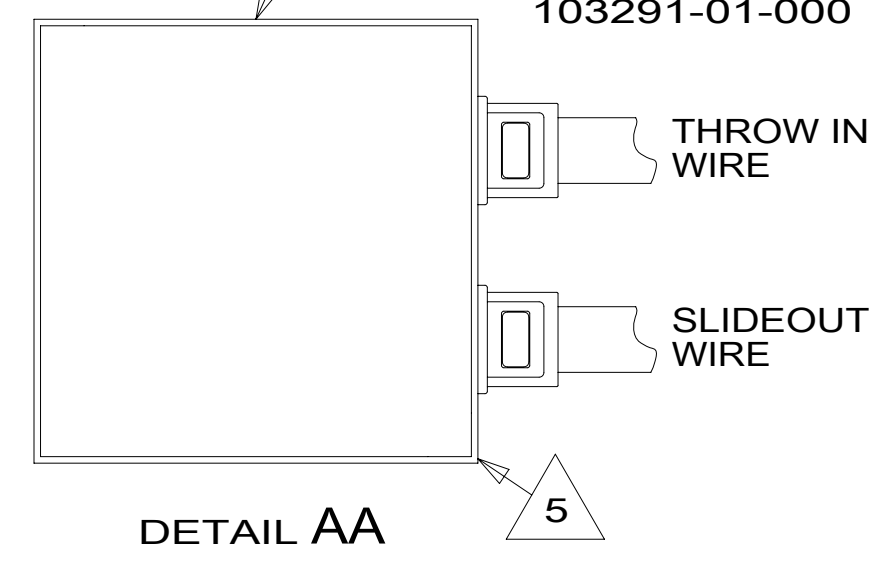
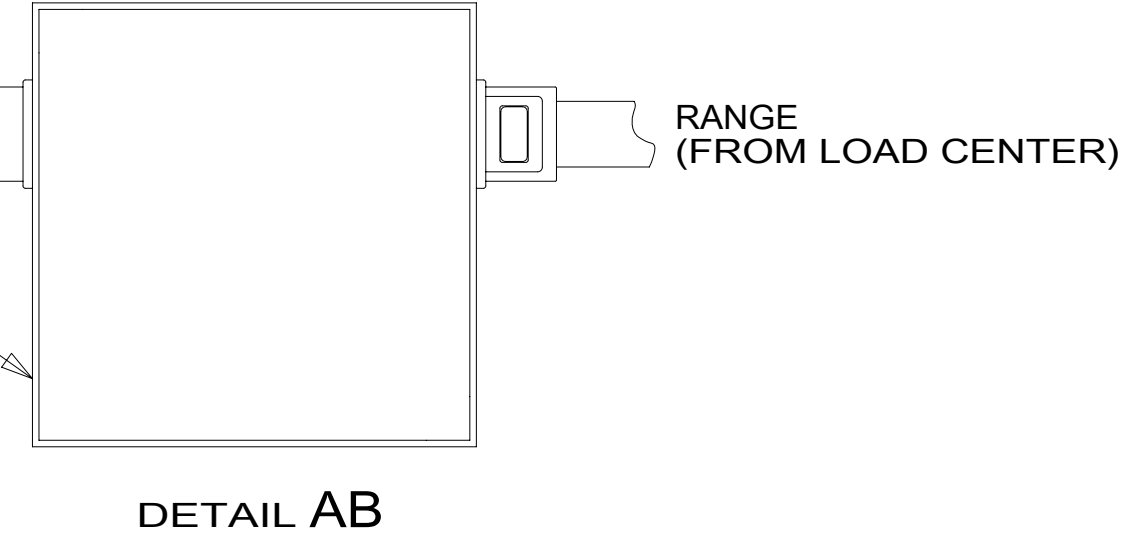
		P38P	P40R	P36M	P42E
BLK	1B1	136131-06-065	136131-06-095	136131-06-054	136131-06-040
	265	136134-06-065	136134-06-095	136134-06-054	136134-06-040
GRY	1B1	136131-15-072	136131-15-015	136131-15-060	136131-15-015
	265	136134-15-072	136134-15-015	136134-15-060	136134-15-015
GRY-2	1B1			136131-23-054	
	265			136134-23-054	
RANGE	1B1				136135-01-065
	265				136136-01-065
INVERTER CHARGER MAIN	1B1	136137-01-047	136137-01-053	136137-01-058	136137-01-053
	265	136138-01-047	136138-01-053	136138-01-058	136138-01-053
INVERTER CHARGER SUB MAIN		136137-01-047	136137-01-053	136137-01-058	136137-01-053
		136138-01-047	136138-01-053	136138-01-058	136138-01-053
CABLE ASM-MAIN,6 AWG		176841-01-015	176841-01-025	176841-01-025	176841-01-053
MAIN GROUND		136145-01-015	136145-01-020	136145-01-065	136145-01-050
ATS GROUND		136145-01-010	136145-01-010	136145-01-050	136145-01-025
INVERTER GROUND		136145-04-035	136145-04-040	136145-04-006	136145-04-025
GENERATOR CABLE ASM		136148-02-120	136148-02-120	136148-02-115	136148-02-097

- 154 FIREPLACE - BEDROOM
- 1B2 WTR HTR-10GAL/ELEC/LP/MTRAIID
- 14C FIREPLACE-ELECTRIC
- 265 CODES/STANDARDS-CSA/CMVSS
- 1B1 CODES/STANDARDS USA

BOX  
 8289-01-000  
 SCREW  
 G11-08-12U (2)  
 COVER  
 8294-01-000  
 CONNECTOR  
 8356-01-000  
 8355-01-000  
 WIRE ASM-GROUND  
 133678-01-000  
 CONNECTOR  
 8314-01-000 (3)  
 SCREW-GROUND GREEN  
 103291-01-000

BOX  
 8289-01-000  
 SCREW  
 G11-08-12U (2)  
 COVER  
 8294-01-000  
 CONNECTOR  
 8356-01-000  
 8355-01-000  
 WIRE ASM-GROUND  
 133678-01-000  
 CONNECTOR  
 8314-01-000 (3)  
 SCREW-GROUND GREEN  
 103291-01-000

- NOTES:
- 5 CONNECT WIRES, WHT TO WHT, BLK TO BLK, GROUNDS TO GROUNDS, KEEPING CIRCUITS SEPERATED.
  - 4 SEE DETAIL AB FOR CONNECTOR INSTALLATION.
  - 3 SEE DETAIL EC FOR CONNECTOR INSTALLATION.
  - 2 SEE DETAIL BD FOR CONNECTOR INSTALLATION.
  - 1 SEE DETAIL BA FOR CONNECTOR INSTALLATION.



FOR ELECTRICAL TORQUE SPECIFICATIONS SEE DWG NO. 128783-01-000

FOR ELECTRICAL CALLOUTS SEE DWG NO. 121339-01-000

WINNEBAGO INDUSTRIES, INC. COPYRIGHT 2014

UNSPECIFIED TOLERANCES ARE:  
 WHOLE DIM (X) : 3  
 ONE-PLACE (X.X) : 1.5  
 TWO-PLACE (X.XX) : 0.50  
 ANGLE : 1'

THIRD ANGLE PROJECTION

DO NOT SCALE DRAWING REFER TO ES0018 FOR FASTENER TIGHTENING GUIDELINES

TITLE: **LOAD CENTER/ATS ASM**

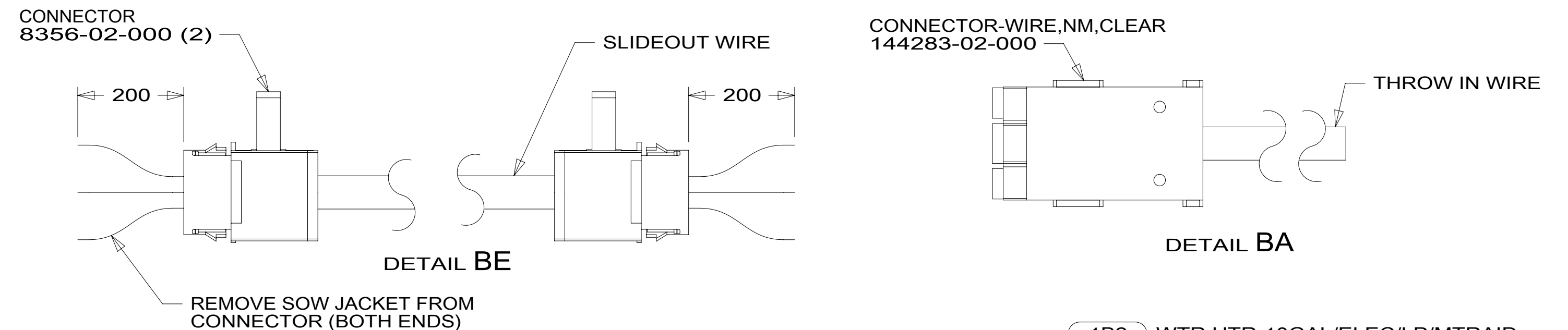
SHEET 1 OF 5 PART NO 191921 REV

REF: 1 13-Nov-2015

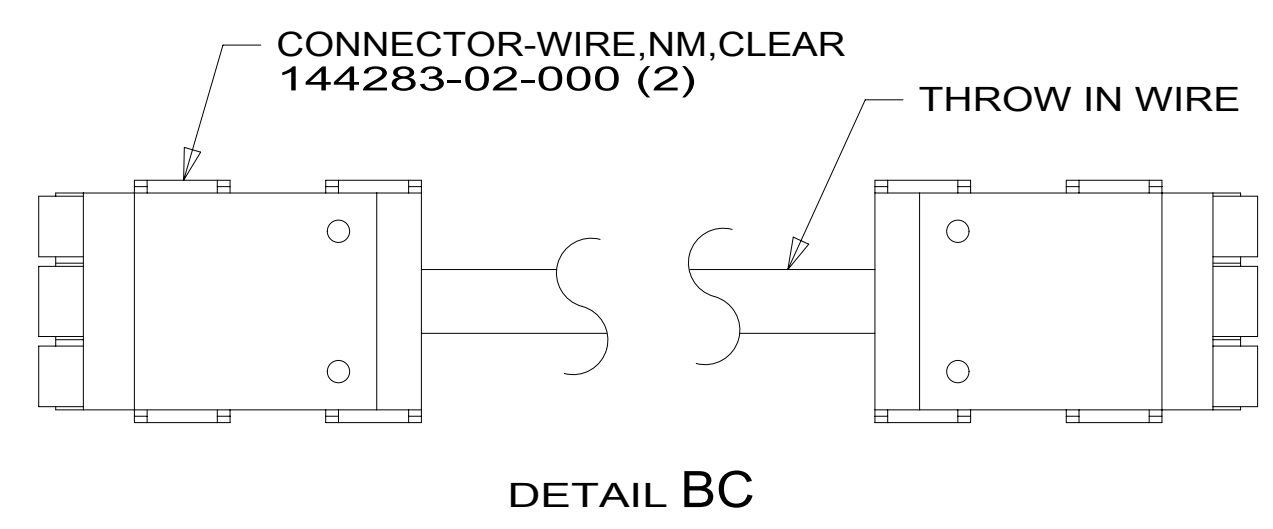
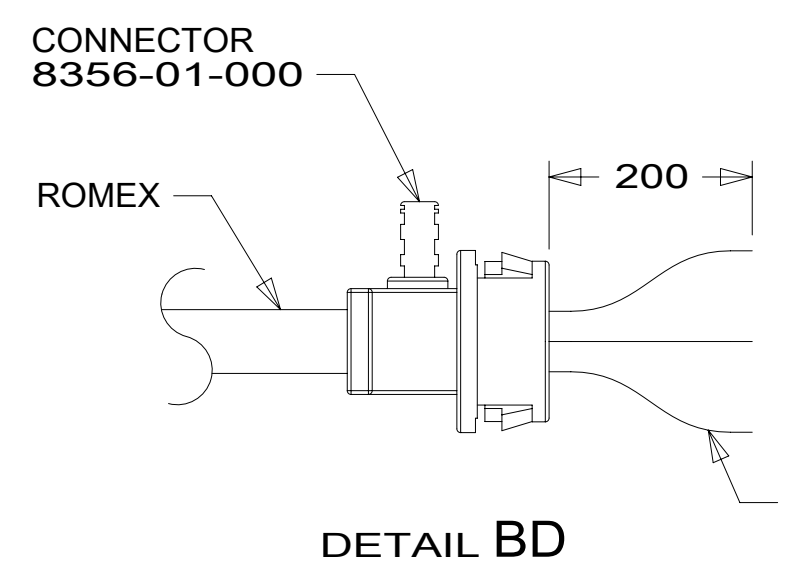
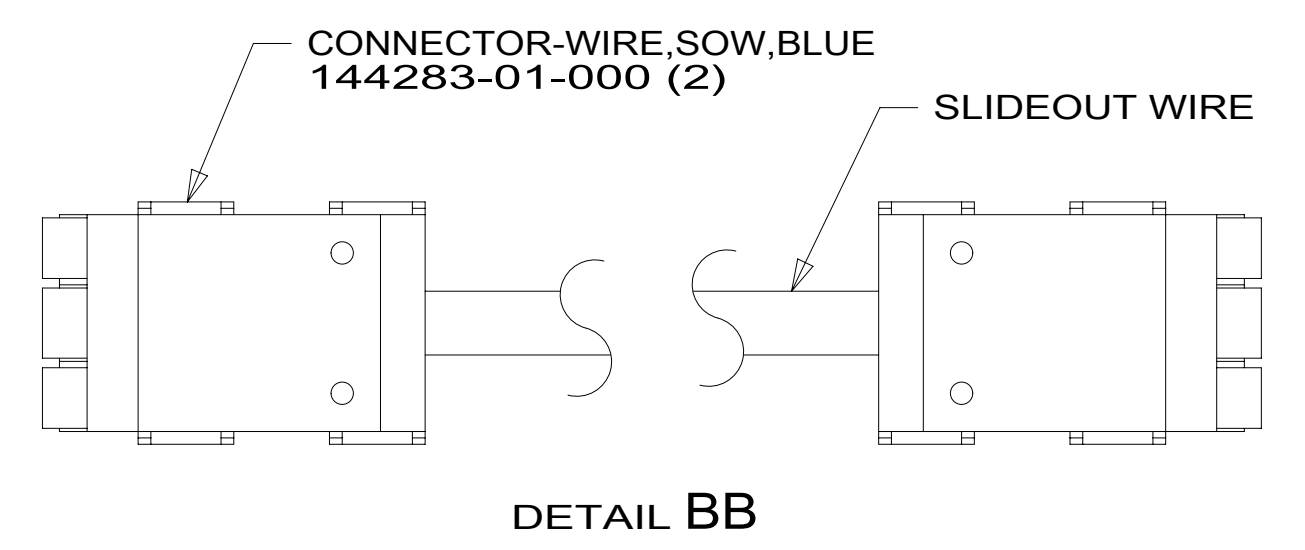
\*191921\*

		P38P	P40R	P36M	P42E
THROW IN WIRE #1	1B1	136131-02-055	136131-02-035	136131-05-032 <sup>1</sup>	136131-02-110
	265	136134-02-055	136134-02-035	136134-05-032 <sup>1</sup>	136134-02-110
THROW IN WIRE #2	1B1	136131-02-035 <sup>11E</sup>	136131-02-027	136131-04-013 <sup>1</sup>	136131-04-010 <sup>3</sup>
	265	136134-02-035 <sup>11E</sup>	136134-02-027	136134-04-013 <sup>1</sup>	136134-04-010 <sup>3</sup>
THROW IN WIRE #3	1B1		136131-04-012 <sup>3</sup>	136131-02-075 <sup>1</sup>	136131-05-023 <sup>1</sup>
	265		136134-04-012 <sup>3</sup>	136134-02-075 <sup>1</sup>	136134-05-023 <sup>1</sup>
THROW IN WIRE #4	1B1	136131-05-011 <sup>1</sup>	136131-04-040 <sup>1</sup>	136131-10-040 <sup>1</sup>	136131-04-020
	265	136134-05-011 <sup>1</sup>	136134-04-040 <sup>1</sup>	136134-10-040 <sup>1</sup>	136134-04-020
THROW IN WIRE #5	1B1	136131-04-040 <sup>1</sup>	136131-04-085 <sup>1</sup>	136131-20-040 <sup>1</sup>	136131-04-032
	265	136134-04-040 <sup>1</sup>	136134-04-085 <sup>1</sup>	136134-20-040 <sup>1</sup>	136134-04-032
THROW IN WIRE #6	1B1	136131-04-076 <sup>3</sup>	136131-15-035 <sup>1</sup> <sup>14C</sup>	136131-02-086	136131-02-030 <sup>11E</sup>
	265	136134-04-076 <sup>3</sup>	136134-15-035 <sup>1</sup> <sup>14C</sup>	136134-02-086	136134-02-030 <sup>11E</sup>
THROW IN WIRE #7	1B1	136131-04-037 <sup>1</sup>	136131-02-043 <sup>11E</sup>	136131-04-010 <sup>1JB</sup>	136131-04-040 <sup>1</sup>
	265	136134-04-037 <sup>1</sup>	136134-02-043 <sup>11E</sup>	136134-04-010 <sup>1JB</sup>	136134-04-040 <sup>1</sup>
THROW IN WIRE #8	1B1	136131-04-055 <sup>1</sup>		136135-09-055 <sup>5</sup> <sup>1B2</sup>	136131-02-030
	265	136134-04-055 <sup>1</sup>		136136-09-055 <sup>5</sup> <sup>1B2</sup>	136134-02-030
THROW IN WIRE #9	1B1	136131-03-010 <sup>1</sup>		136131-15-010 <sup>6</sup> <sup>5</sup> <sup>14C</sup>	136135-01-026 <sup>7</sup>
	265	136134-03-010 <sup>1</sup>		136134-15-010 <sup>6</sup> <sup>5</sup> <sup>14C</sup>	136136-01-026 <sup>7</sup>
THROW IN WIRE #10	1B1	136135-09-025 <sup>1</sup> <sup>1B2</sup>			
	265	136136-09-025 <sup>1</sup> <sup>1B2</sup>			
THROW IN WIRE #11	1B1	136131-03-030 <sup>1</sup>			
	265	136134-03-030 <sup>1</sup>			
THROW IN WIRE #12	1B1				
	265				

	P38P	P40R	P36M	P42E
SLIDEOUT #1 WIRE #1	136151-02-019 <sup>2</sup>	136151-02-020 <sup>2</sup>	136151-03-027 <sup>2</sup>	136151-02-058 <sup>2</sup>
SLIDEOUT #1 WIRE #2	136151-06-019 <sup>2</sup>	136151-06-020 <sup>2</sup>		136151-06-058 <sup>2</sup>
SLIDEOUT #1 WIRE #3	136151-05-019 <sup>2</sup>			136152-01-058 <sup>7</sup>
SLIDEOUT #1 WIRE #4				
SLIDEOUT #2 WIRE #1	136151-04-010 <sup>2</sup>	136151-04-012 <sup>2</sup>		136151-04-015 <sup>2</sup>
SLIDEOUT #2 WIRE #2	136152-09-010 <sup>4</sup> <sup>1B2</sup>			
SLIDEOUT #2 WIRE #3	136151-03-010 <sup>2</sup>			
SLIDEOUT #3 WIRE #1	136151-04-010 <sup>2</sup>	136151-03-055 <sup>2</sup>		136151-04-042 <sup>2</sup>
SLIDEOUT #3 WIRE #2		136151-15-055 <sup>2</sup>		136151-15-042 <sup>2</sup> <sup>14C</sup>
SLIDEOUT #3 WIRE #3		136151-04-055 <sup>2</sup>		136151-05-042 <sup>2</sup>
SLIDEOUT #3 WIRE #4		136151-05-055 <sup>2</sup>		
SLIDEOUT #4 WIRE #1	136151-04-030 <sup>2</sup>		136151-05-025 <sup>2</sup>	
SLIDEOUT #4 WIRE #2	136151-03-030 <sup>2</sup>		136151-06-025 <sup>2</sup>	
SLIDEOUT #4 WIRE #3			136151-02-025 <sup>2</sup>	
SLIDEOUT #4 WIRE #4			136151-04-025 <sup>2</sup>	
SLIDEOUT #4 WIRE #5			136151-10-025 <sup>2</sup>	
SLIDEOUT #4 WIRE #6			136151-20-025 <sup>2</sup>	
SLIDEOUT #4 WIRE #7			136152-09-028 <sup>4</sup> <sup>1B2</sup>	
SLIDEOUT #4 WIRE #8			136151-23-025 <sup>2</sup> <sup>154</sup>	



- NOTES:
- <sup>7</sup> SEE DETAIL AA FOR CONNECTOR INSTALLATION.
  - <sup>6</sup> SEE DETAIL EC FOR CONNECTOR INSTALLATION.
  - <sup>5</sup> SEE DETAIL BD FOR CONNECTOR INSTALLATION.
  - <sup>4</sup> SEE DETAIL BE FOR CONNECTOR INSTALLATION.
  - <sup>3</sup> SEE DETAIL BC FOR CONNECTOR INSTALLATION.
  - <sup>2</sup> SEE DETAIL BB FOR CONNECTOR INSTALLATION.
  - <sup>1</sup> SEE DETAIL BA FOR CONNECTOR INSTALLATION.



FOR ELECTRICAL TORQUE SPECIFICATIONS SEE DWG NO. 128783-01-000

FOR ELECTRICAL CALLOUTS SEE DWG NO. 121339-01-000

- <sup>1B2</sup> WTR HTR-10GAL/ELEC/LP/MTRAIID
- <sup>154</sup> FIREPLACE - BEDROOM
- <sup>11E</sup> REFRIGERATOR/FREEZER PORTABL
- <sup>1JB</sup> TV-40"-(FRONT) COLOR, STEREO
- <sup>14C</sup> FIREPLACE-ELECTRIC
- <sup>265</sup> CODES/STANDARDS-CSA/CMVSS
- <sup>1B1</sup> CODES/STANDARDS-USA

FIRST USED

**16 P-SERIES**

DO NOT SCALE DRAWING

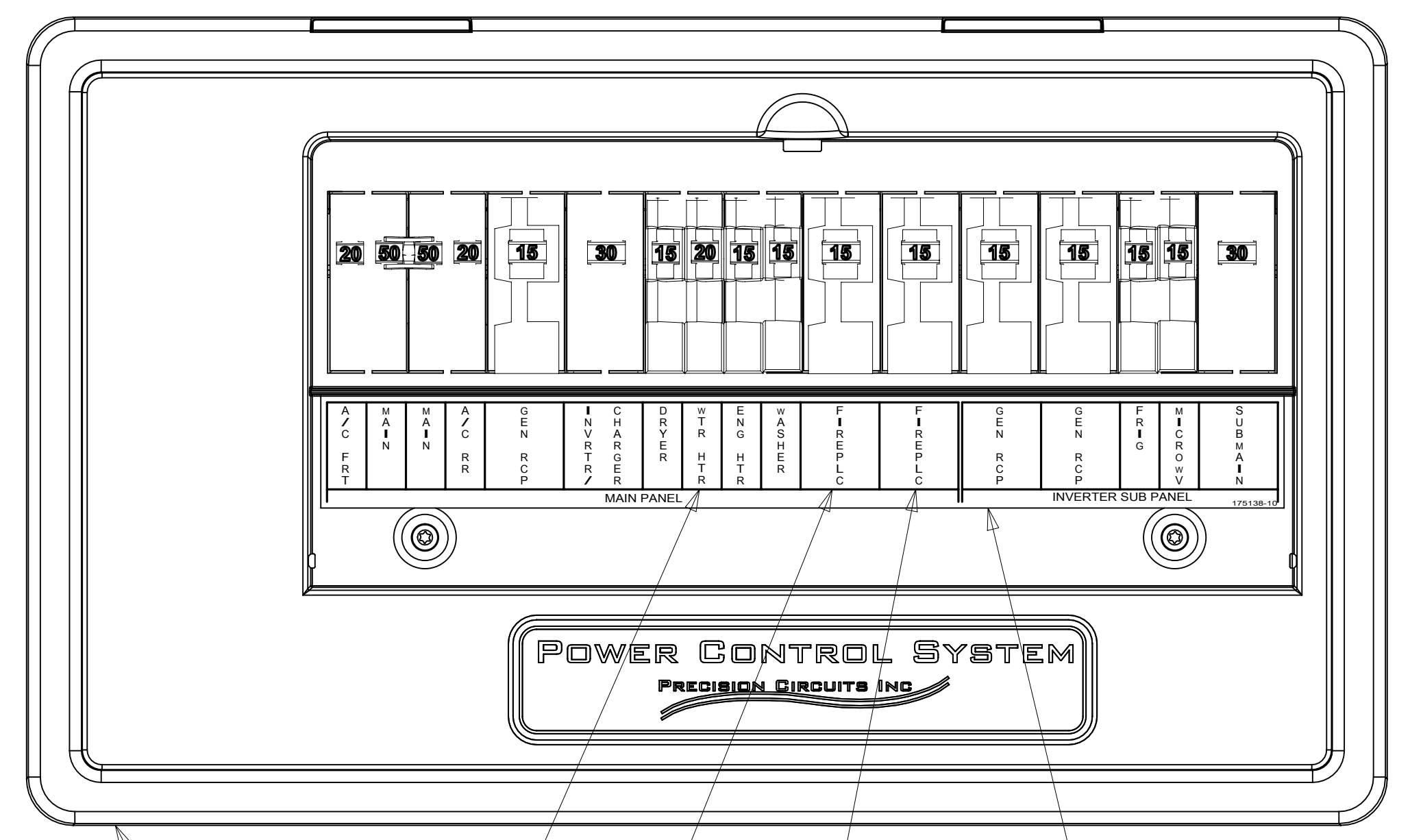
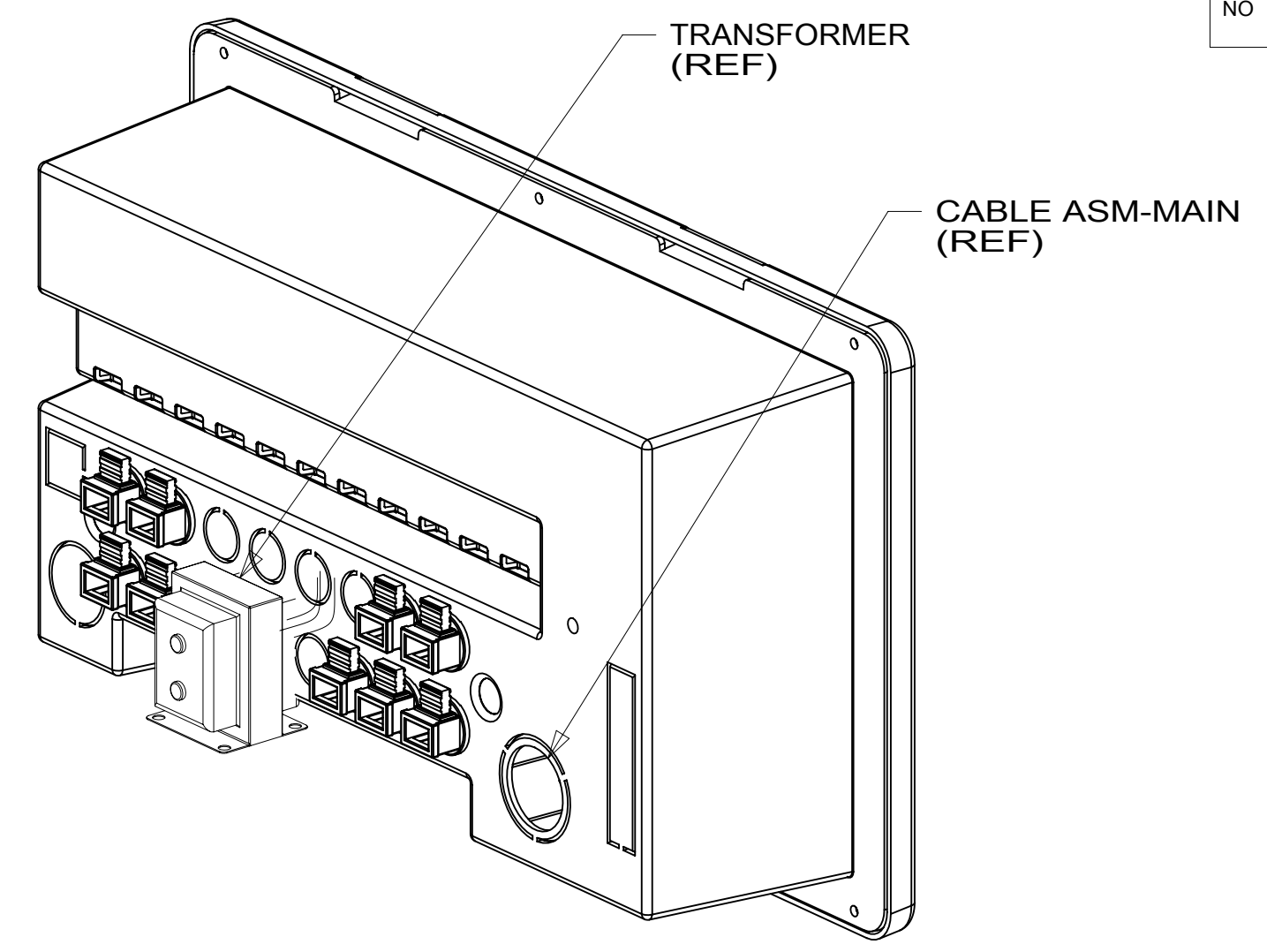
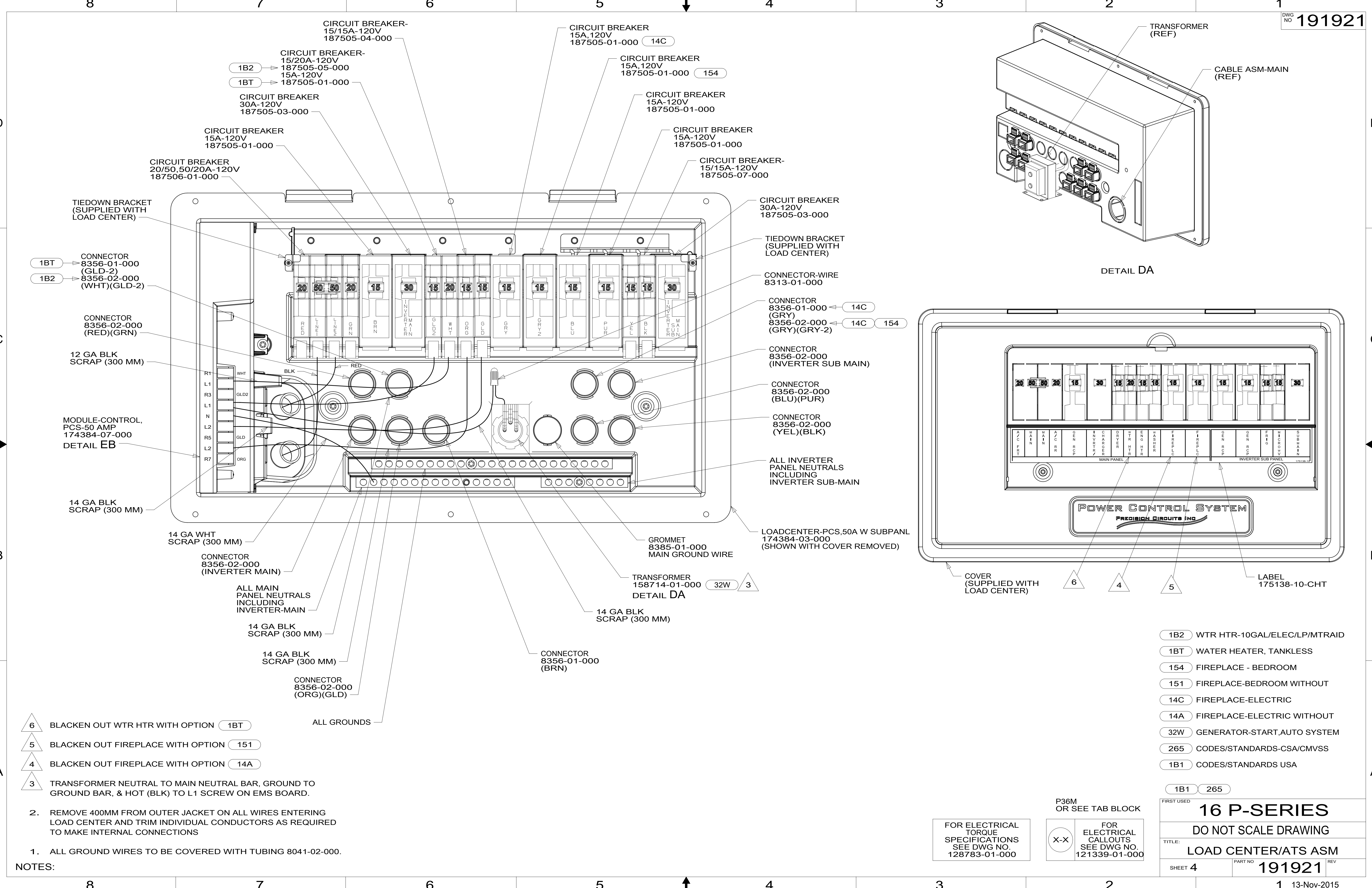
TITLE: **LOAD CENTER/ATS ASM**

SHEET 2 PART NO **191921** REV

13-Nov-2015

\*191921\*





- NOTES:**
- 1. ALL GROUND WIRES TO BE COVERED WITH TUBING 8041-02-000.
  - 2. REMOVE 400MM FROM OUTER JACKET ON ALL WIRES ENTERING LOAD CENTER AND TRIM INDIVIDUAL CONDUCTORS AS REQUIRED TO MAKE INTERNAL CONNECTIONS

- 1B2 WTR HTR-10GAL/ELEC/LP/MTRAITD
- 1BT WATER HEATER, TANKLESS
- 154 FIREPLACE - BEDROOM
- 151 FIREPLACE-BEDROOM WITHOUT
- 14C FIREPLACE-ELECTRIC
- 14A FIREPLACE-ELECTRIC WITHOUT
- 32W GENERATOR-START,AUTO SYSTEM
- 265 CODES/STANDARDS-CSA/CMVSS
- 1B1 CODES/STANDARDS USA

FOR ELECTRICAL TORQUE SPECIFICATIONS SEE DWG NO. 128783-01-000

P36M OR SEE TAB BLOCK  
X-X FOR ELECTRICAL CALLOUTS SEE DWG NO. 121339-01-000

FIRST USED

**16 P-SERIES**

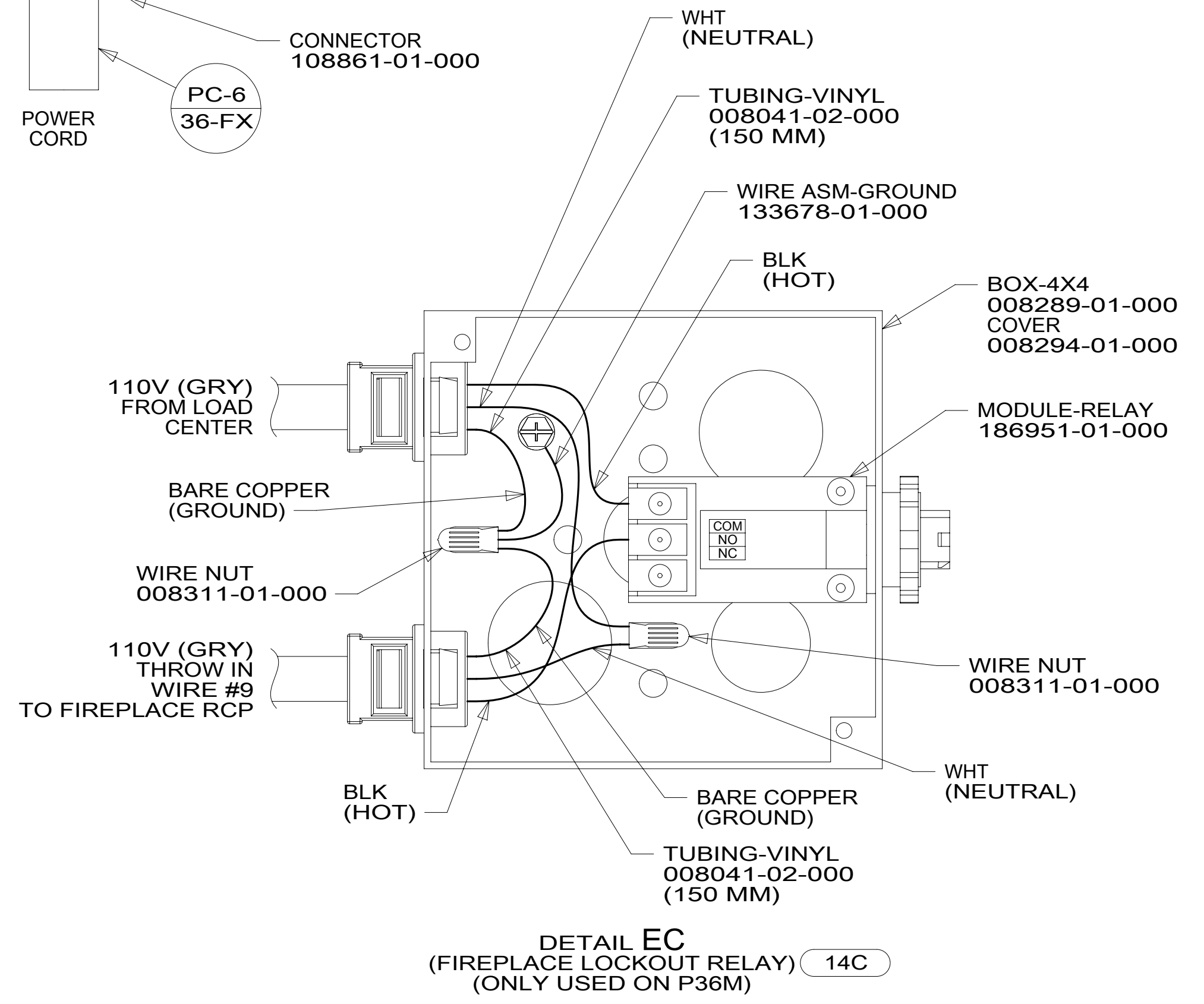
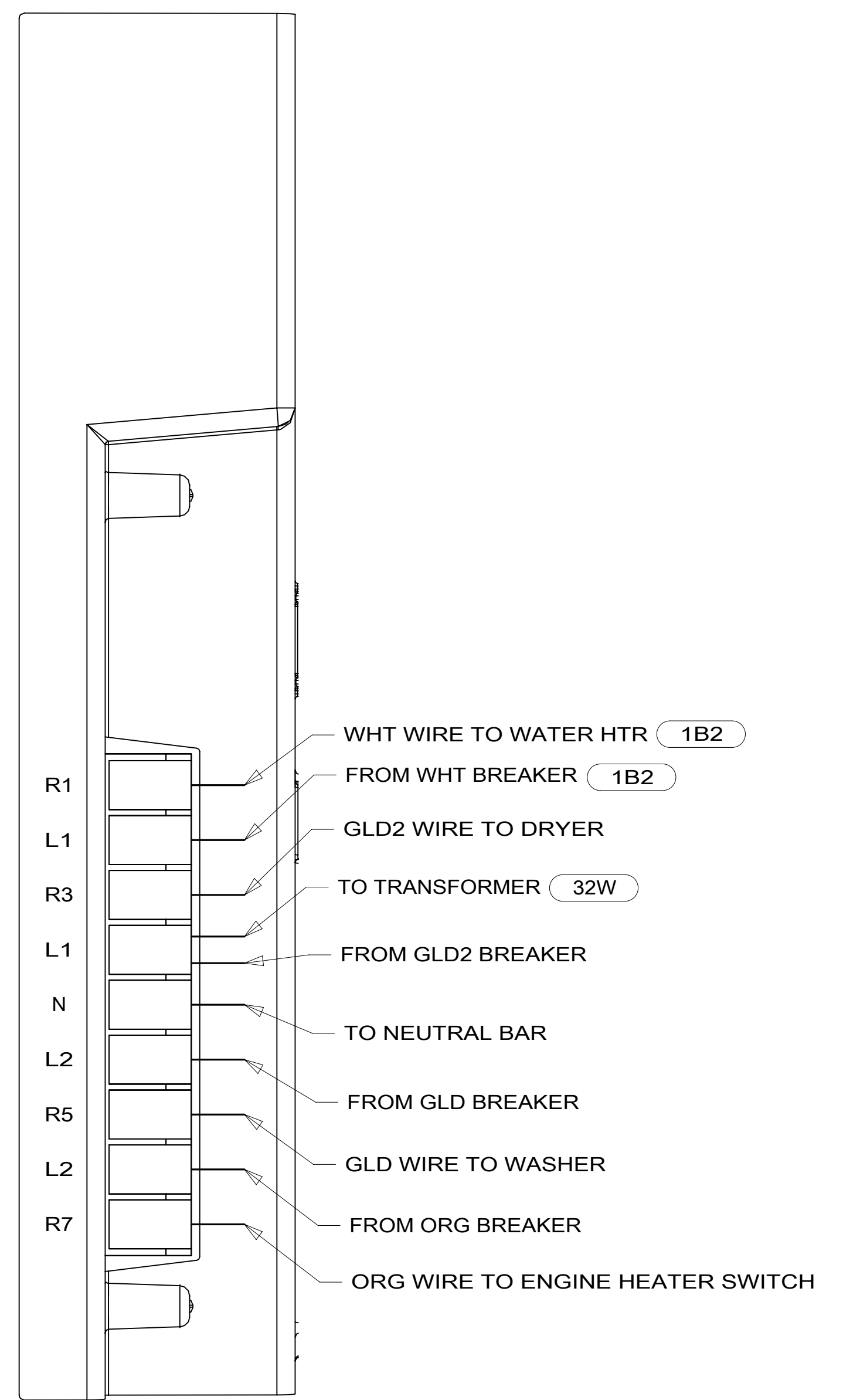
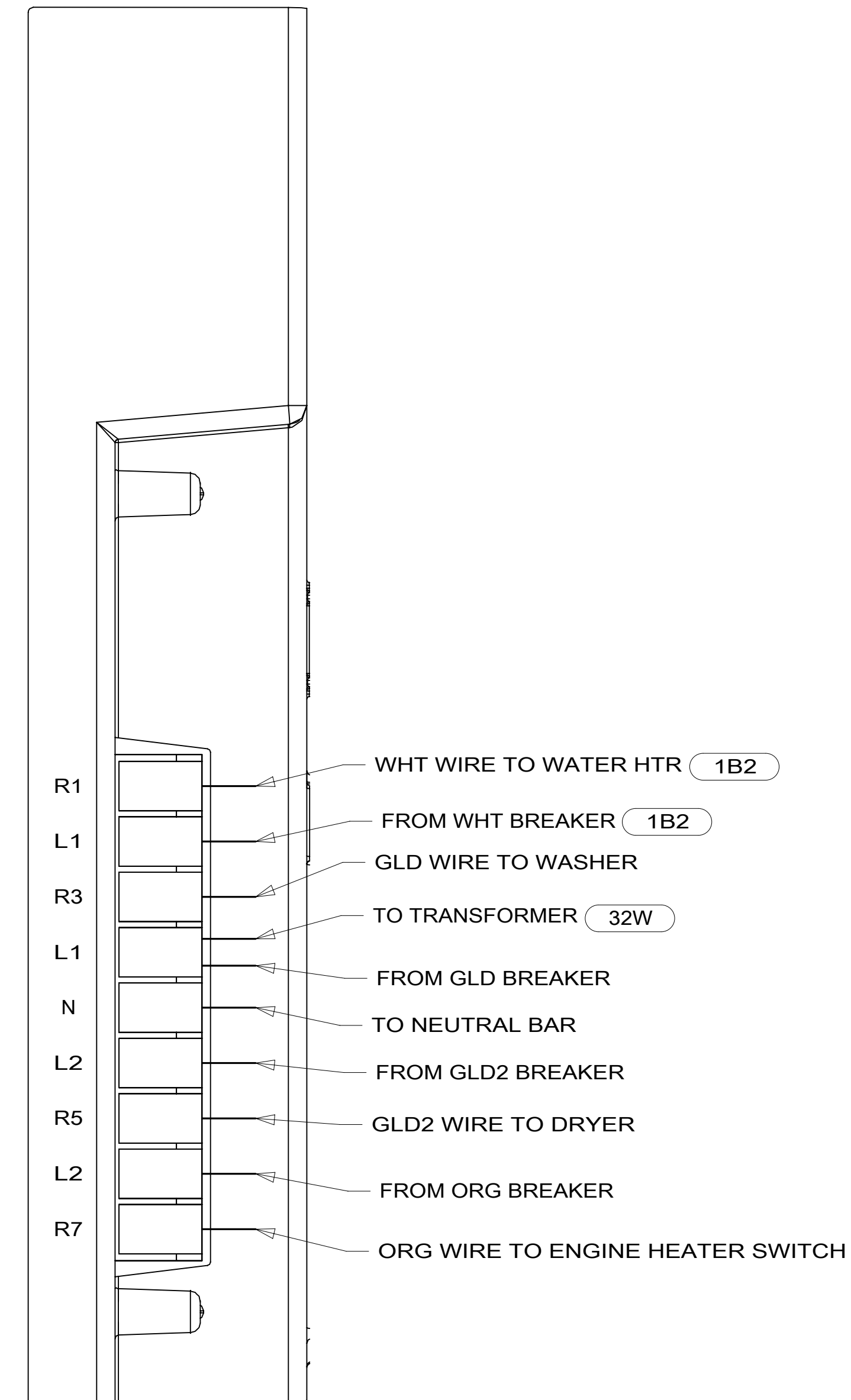
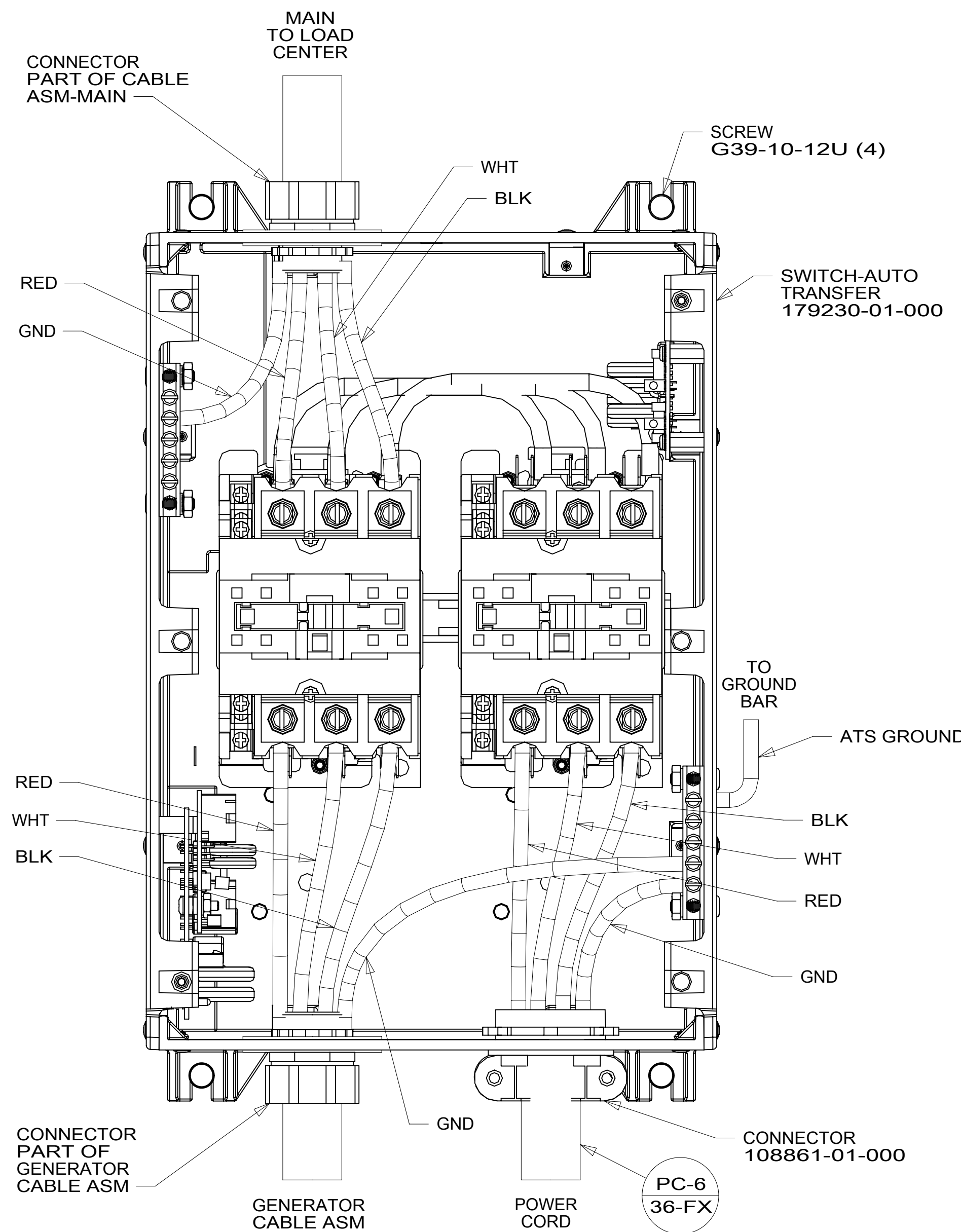
DO NOT SCALE DRAWING

TITLE: **LOAD CENTER/ATS ASM**

SHEET 4 PART NO **191921** REV

13-Nov-2015

\*191921 A\*



- 14C FIREPLACE-ELECTRIC
- 1B2 WTR HTR-10GAL/ELEC/LP/MTRAIID
- 32W GENERATOR-START,AUTO SYSTEM
- 265 CODES/STANDARDS-CSA/CMVSS
- 1B1 CODES/STANDARDS USA

FIRST USED	
<b>16 P-SERIES</b>	
DO NOT SCALE DRAWING	
TITLE: <b>LOAD CENTER/ATS ASM</b>	
SHEET 5	PART NO <b>191921</b> REV

FOR ELECTRICAL TORQUE SPECIFICATIONS SEE DWG NO. 128783-01-000

FOR ELECTRICAL CALLOUTS SEE DWG NO. 121339-01-000

\*191921 A\*