

DRAWING NO.	MODEL	SHEETS
191913-01	P40R	1,2,3,5,8
191913-02	P36M	1,3,4,5,8
191913-03	P42E	1,3,5,6,8
191913-04	P38P	1,3,5,7,8

INDICATES COMPONENTS TO BE DETERMINED

RELEASE A REV/DATE DWG NO. 191913
 REV ZONE REVISION RECORD DATE DFR-ORIG

	P40R	P36M	P42E	P38P
CABLE ASM (YEL) FROM COACH BATTERY FUSE TO COACH STUD,JUMP START	175207-52-069	175207-52-063	175207-52-082	175207-52-069
CABLE ASM (YEL) FROM STUD,JUMP START TO COACH SIDE OF AUX START SOLENOID	175207-52-004	175207-52-004	175207-52-004	175207-52-004
CABLE ASM (BLK) FROM STUD,JUMP START "GROUND" TO FRAME RAIL GROUND	175211-01-010	175211-01-010	175211-01-010	175211-01-010
CABLE ASM (ORG) FROM COACH BATTERY TO INVERTER FUSE	175207-66-010	175207-66-010	175207-66-010	175207-66-015
CABLE ASM (ORG) FROM INVERTER FUSE TO INVERTER DISCONNECT SWITCH	175207-67-023	175207-67-027	175207-67-034	175207-67-026
CABLE ASM (ORG) FROM INVERTER DISCONNECT TO POSITIVE TERMINAL ON INVERTER	175207-65-005	175207-65-005	175207-65-005	175207-65-005
CABLE ASM (BLK) FROM BATTERY TO INVERTER NEGATIVE TERMINAL	175211-01-028	175211-01-028	175211-01-034	175211-01-034
CABLE ASM (BLK) FROM COACH BATTERY TO FRAME RAIL GROUND	175211-02-072	175211-02-060	175211-02-085	175211-02-067
CABLE ASM (PUR) FROM CHASSIS BATTERY DISCONNECT TO CHASSIS ISOLATED STUD	175207-15-005	175207-15-005	175207-15-005	175207-15-005
CABLE ASM (BLU) FROM CHASSIS DISCONNECT FUSE TO LEVELING SYSTEM PUMP	141416-26-120	141416-26-108	141416-26-129	141416-26-117
CABLE ASM (BLK) FROM LEVELING SYSTEM TO FRAME RAIL GROUND	133567-11-005	133567-11-005	133567-11-005	133567-11-005
CABLE ASM (GRN) FROM COACH BAT DISC RELAY TO PASS THRU STUD IN FRONT LEFT COMPT	175207-42-125	175207-42-115	175207-42-138	175207-42-124
CABLE ASM (GRN) FROM PASS THRU STUD IN FRONT LEFT COMPT TO GENERATOR	175207-42-031	175207-42-031	175207-42-031	175207-42-031
CABLE ASM (BLK) FROM GENERATOR TO FRAME RAIL GROUND BOLT	175211-02-020	175211-02-020	175211-02-020	175211-02-020
CABLE ASM (YEL) JUMPER BETWEEN POSITIVE POSTS ON COACH BATTERY	141417-52-004 141417-51-002 (4)	141417-52-004 141417-51-002 (4)	141417-52-004 141417-51-002 (4)	141417-52-004 141417-51-002 (4)
CABLE ASM (BLK) JUMPER BETWEEN NEGATIVE POSTS ON COACH BATTERY	133568-12-004 133568-11-002 (4)	133568-12-004 133568-11-002 (4)	133568-12-004 133568-11-002 (4)	133568-12-004 133568-11-002 (4)
CABLE ASM (RED) JUMPER BETWEEN POSITIVE POSTS IN LEFT FRONT COMPT	141417-32-002	141417-32-002	141417-32-002	141417-32-002
CABLE ASM-TEMPERATURE,BATTERY	175385-03-000	175385-03-000	175385-03-000	175385-03-000
CABLE ASM (RED) FROM CHASSIS BATTERY FUSE TO CHASSIS SIDE OF AUX START SOLENOID	175207-35-008	175207-35-008	175207-35-008	175207-35-008
CABLE ASM (RED) FROM CHASSIS BATTERY TO CHASSIS BATTERY FUSE	175207-35-005	175207-35-005	175207-35-005	175207-35-005
CABLE ASM (YEL) FROM COACH BATTERY TO COACH BATTERY FUSE	175207-52-006	175207-52-006	175207-52-006	175207-52-006
CABLE ASM (YEL) FROM COACH DISCONNECT TO MULTIPLEX PANEL	189044-01-072		189044-01-072	189044-01-048

2

2

1

1

2

3

2

3

265 CODES/STANDARDS-CSA/CMVSS
 1B1 CODES/STANDARDS USA
 1B1 265

WINNEBAGO COPYRIGHT 2014 WINNEBAGO INDUSTRIES, INC.

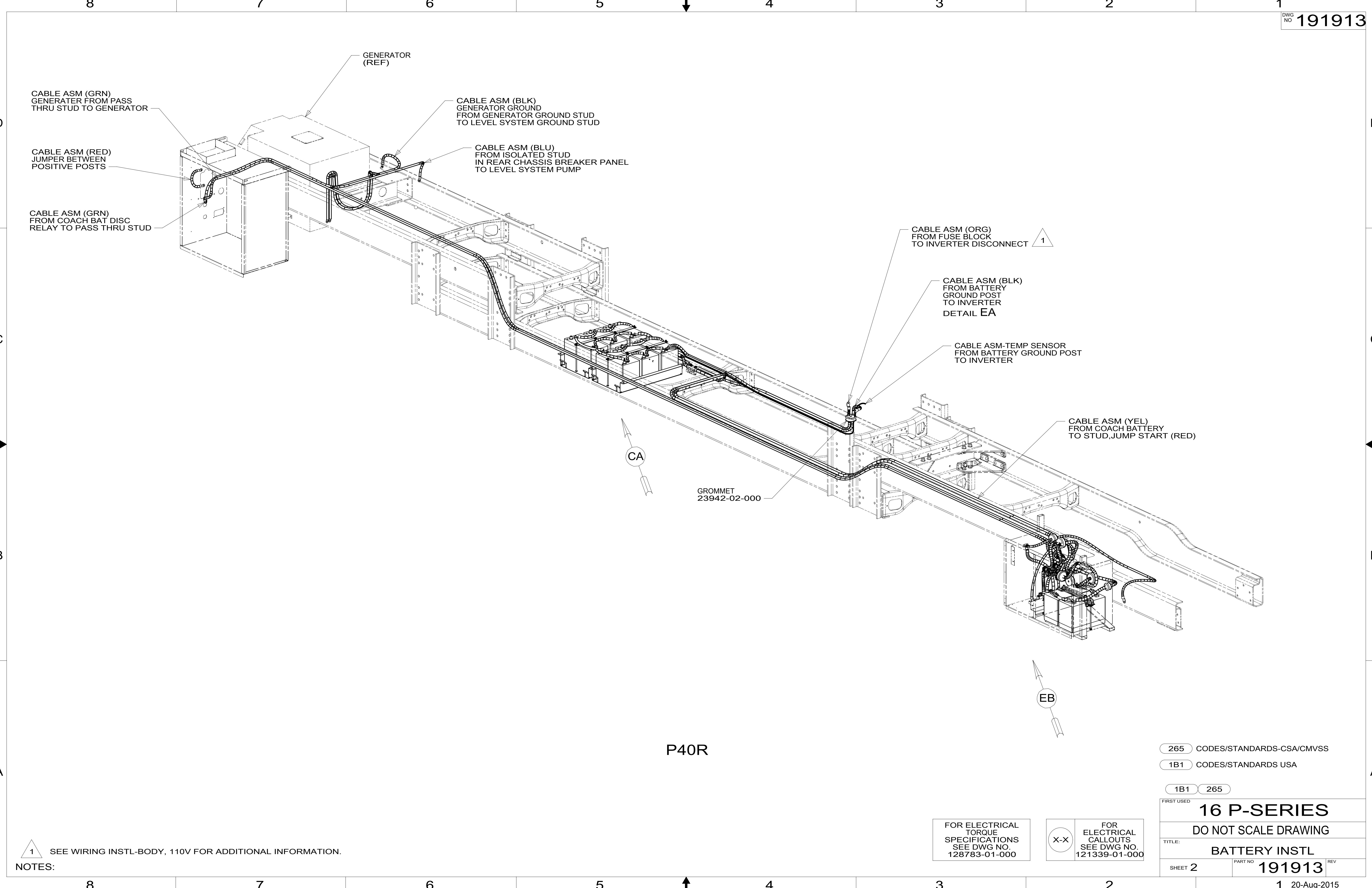
DFTR	ORIG. DATE
CHKR	ALL DIMENSIONS ARE IN MILLIMETERS
P.E.	
M.E.	FIRST USED
DSNR	16 P-SERIES
UNSPECIFIED TOLERANCES ARE:	
WHOLE DIM (X)	: 3
ONE-PLACE (X.X)	: 1.5
TWO-PLACE (X.XX)	: 0.50
ANGLE	: 1'
THIRD ANGLE PROJECTION	
DO NOT SCALE DRAWING	REFER TO ES0018 FOR FASTENER TIGHTENING GUIDELINES
TITLE: BATTERY INSTL	
SHEET 1 OF 8	PART NO. 191913 REV

- 3 SEE WIRING INSTL-FRONT END FOR ADDITIONAL INFORMATION.
- 2 SEE WIRING INSTL-CHASSIS FOR ADDITIONAL INFORMATION.
- 1 SEE LEVELING SYSTEM INSTL FOR ADDITIONAL INFORMATION.

FOR ELECTRICAL TORQUE SPECIFICATIONS SEE DWG NO. 128783-01-000

FOR ELECTRICAL CALLOUTS SEE DWG NO. 121339-01-000

191913



CABLE ASM (GRN)
GENERATOR FROM PASS
THRU STUD TO GENERATOR

CABLE ASM (RED)
JUMPER BETWEEN
POSITIVE POSTS

CABLE ASM (GRN)
FROM COACH BAT DISC
RELAY TO PASS THRU STUD

GENERATOR
(REF)

CABLE ASM (BLK)
GENERATOR GROUND
FROM GENERATOR GROUND STUD
TO LEVEL SYSTEM GROUND STUD

CABLE ASM (BLU)
FROM ISOLATED STUD
IN REAR CHASSIS BREAKER PANEL
TO LEVEL SYSTEM PUMP

CABLE ASM (ORG)
FROM FUSE BLOCK
TO INVERTER DISCONNECT 1

CABLE ASM (BLK)
FROM BATTERY
GROUND POST
TO INVERTER
DETAIL EA

CABLE ASM-TEMP SENSOR
FROM BATTERY GROUND POST
TO INVERTER

CABLE ASM (YEL)
FROM COACH BATTERY
TO STUD, JUMP START (RED)

GROMMET
23942-02-000

CA

EB

P40R

NOTES:
1 SEE WIRING INSTL-BODY, 110V FOR ADDITIONAL INFORMATION.

FOR ELECTRICAL
TORQUE
SPECIFICATIONS
SEE DWG NO.
128783-01-000

FOR
ELECTRICAL
CALLOUTS
SEE DWG NO.
121339-01-000

265 CODES/STANDARDS-CSA/CMVSS
1B1 CODES/STANDARDS USA

1B1 265

FIRST USED
16 P-SERIES

DO NOT SCALE DRAWING

TITLE:
BATTERY INSTL

SHEET 2 PART NO **191913** REV

BATTERY-12V
 174923-01-000 (6)
 BOLT
 51387-06-000 (8)
 NUT-HEX
 D39-05-00U (8)
 WASHER-RUBBER
 184541-01-CHT (8)
 STRAP-BATTERY
 TIE DOWN
 138914-01-CHT (6)

CABLE ASM (ORG)
 TO INVERTER FUSE

TO GROUND STUD
 BEHIND CHASSIS
 BATTERIES

CABLE ASM (YEL)

CABLE ASM (BLK)
 TO INVERTER

CABLE ASM-
 TEMPERATURE,BATTERY

HOLDER-FUSE
 115187-02-000
 FUSE-400 AMP
 115187-05-000
 SCREW
 G39-10-16B (2)

CABLE ASM (YEL)
 COACH BATTERY JUMPER

CABLE ASM (BLK)
 COACH BATTERY JUMPER

HOLDER-FUSE
 188460-01-000
 FUSE-500 AMP
 188461-04-000
 SCREW
 G39-10-12U (2)

TRAY ASM-BATTERY
 176166-01-CHT (2)
 NUT
 D39-06-009 (6)
 WASHER
 E13-17-00B (6)

282 CONNECT SOLAR PANEL
 GROUND HERE
 CIRCUIT ZZD
 29W TAPE CIRCUIT ZZD
 BACK TO HARNESS

VIEW CA

- 29W SOLAR PANEL/BATTERY CHRГ W/O
- 282 SOLAR PANEL - 100 WATT
- 265 CODES/STANDARDS-CSA/CMVSS
- 1B1 CODES/STANDARDS USA

1B1 265

FIRST USED
16 P-SERIES

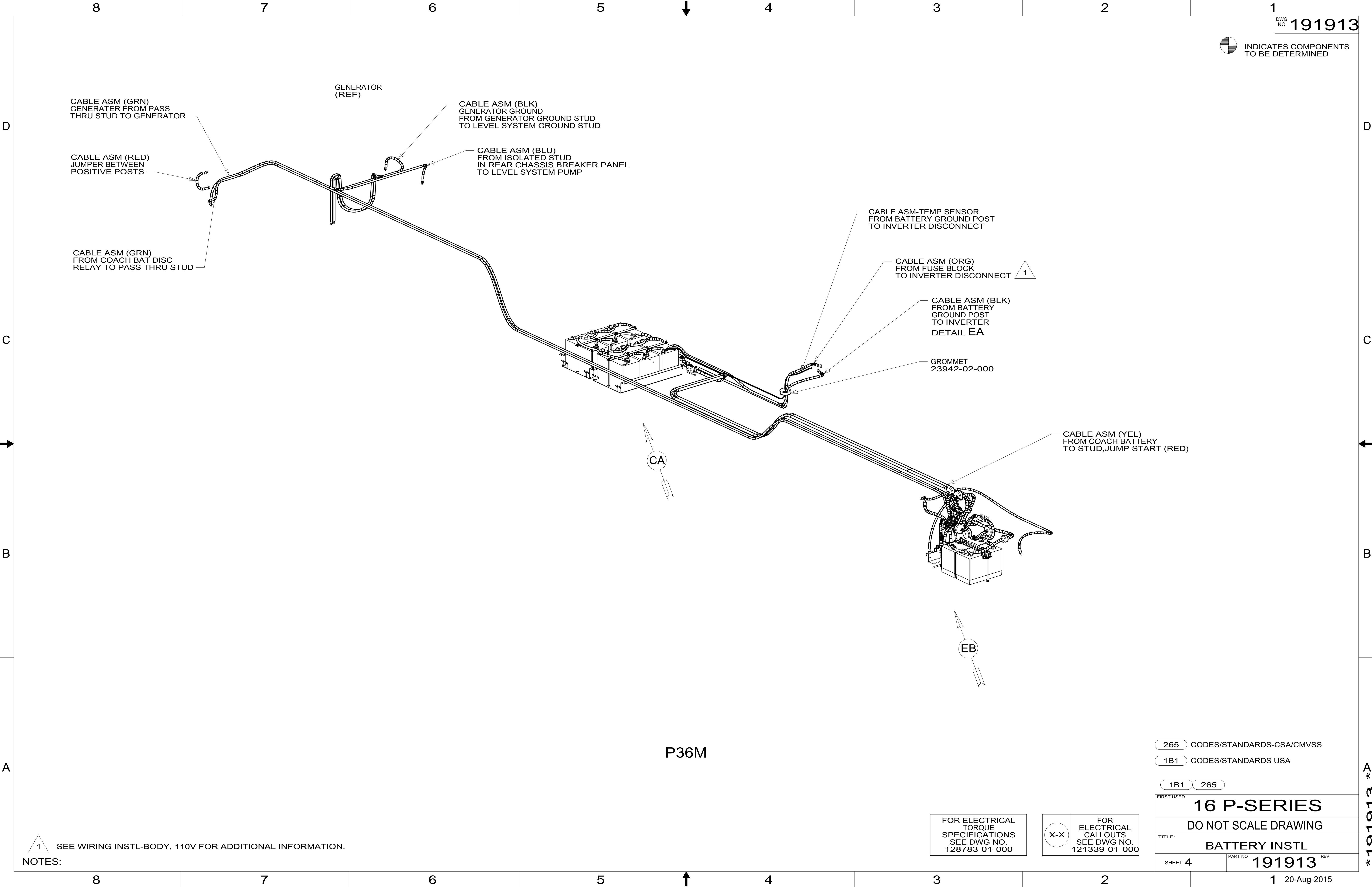
DO NOT SCALE DRAWING

TITLE:
BATTERY INSTL

SHEET 3 PART NO **191913** REV

FOR ELECTRICAL
 TORQUE
 SPECIFICATIONS
 SEE DWG NO.
 128783-01-000

X-X FOR
 ELECTRICAL
 CALLOUTS
 SEE DWG NO.
 121339-01-000



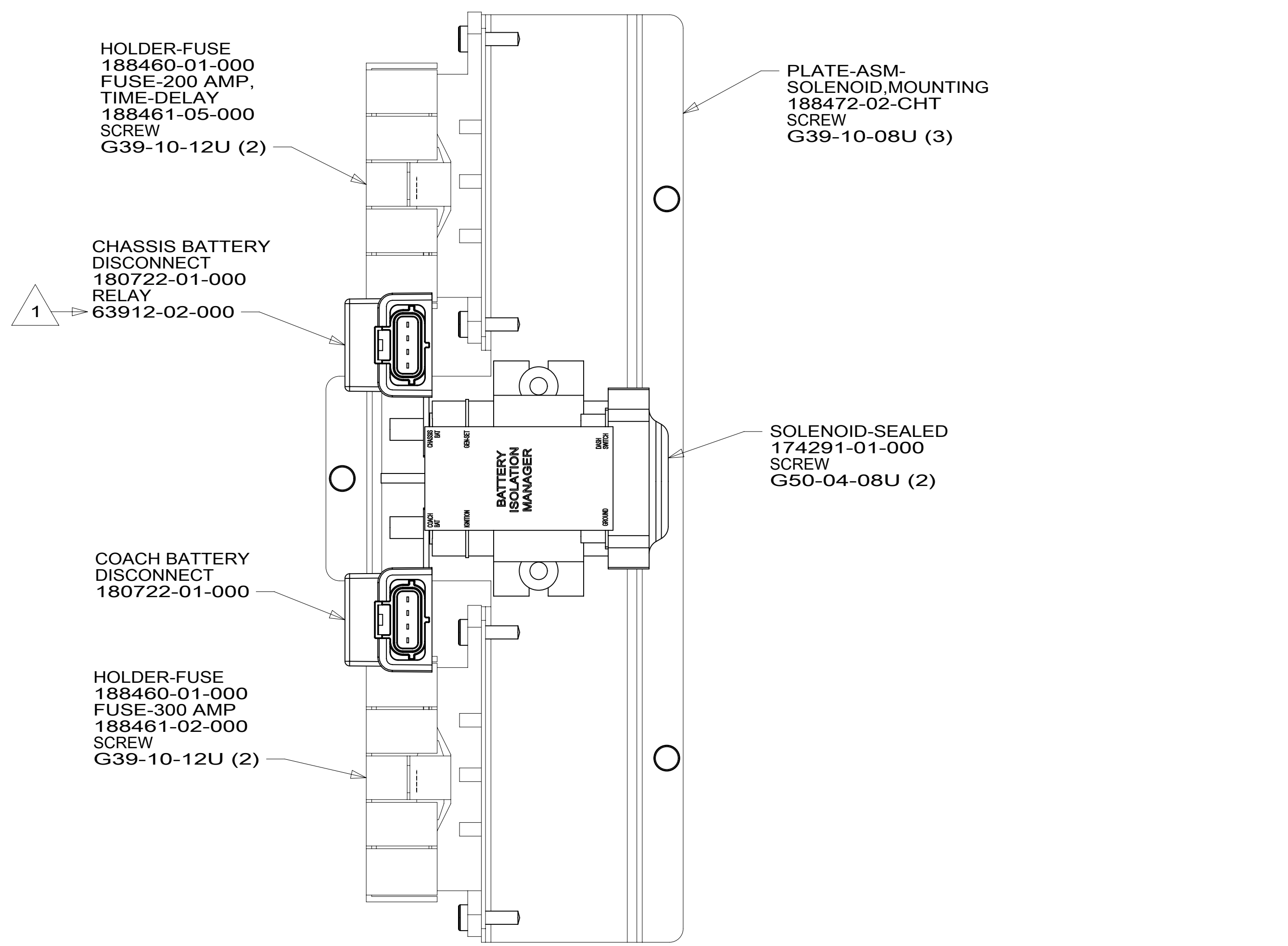
NOTES: 1 SEE WIRING INSTL-BODY, 110V FOR ADDITIONAL INFORMATION.

FOR ELECTRICAL TORQUE SPECIFICATIONS SEE DWG NO. 128783-01-000

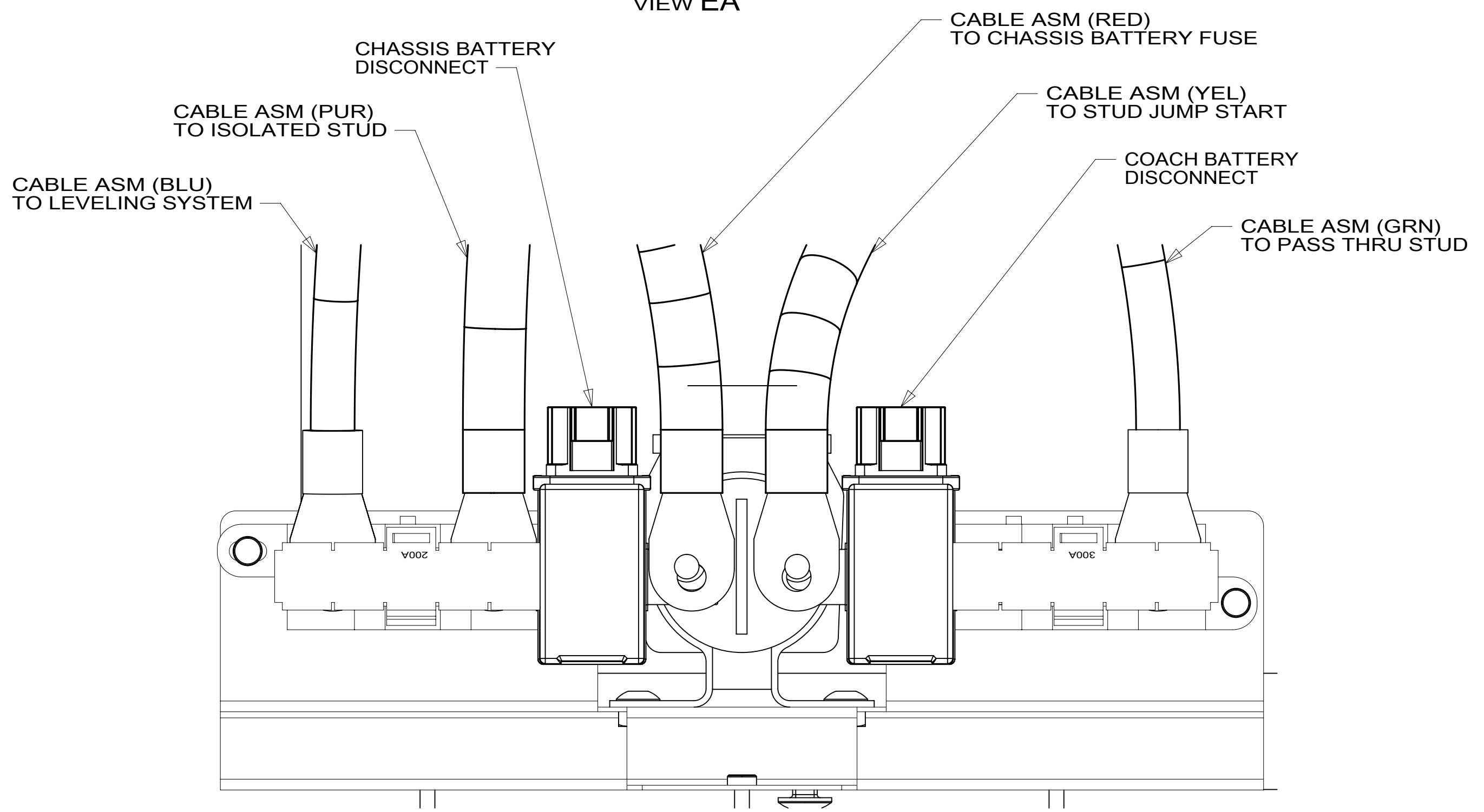
FOR ELECTRICAL CALLOUTS SEE DWG NO. 121339-01-000

265 CODES/STANDARDS-CSA/CMVSS
1B1 CODES/STANDARDS USA
1B1 265

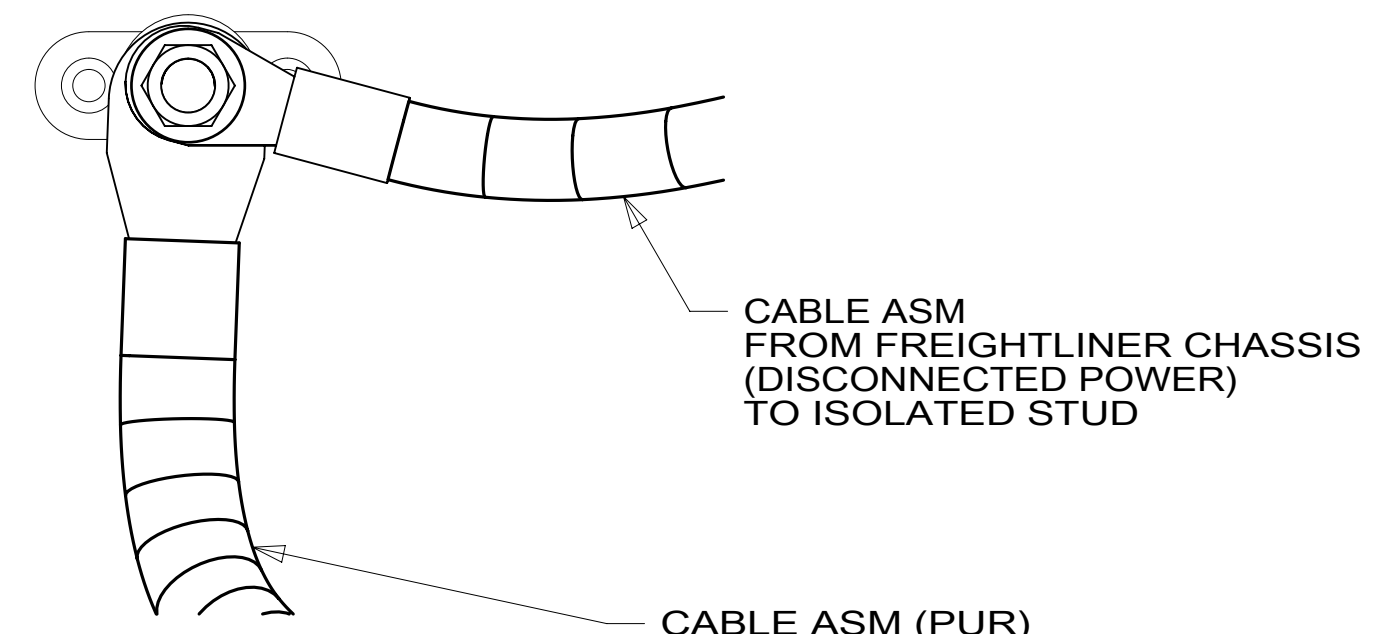
FIRST USED	16 P-SERIES
TITLE:	DO NOT SCALE DRAWING
	BATTERY INSTL
SHEET 4	PART NO 191913 REV



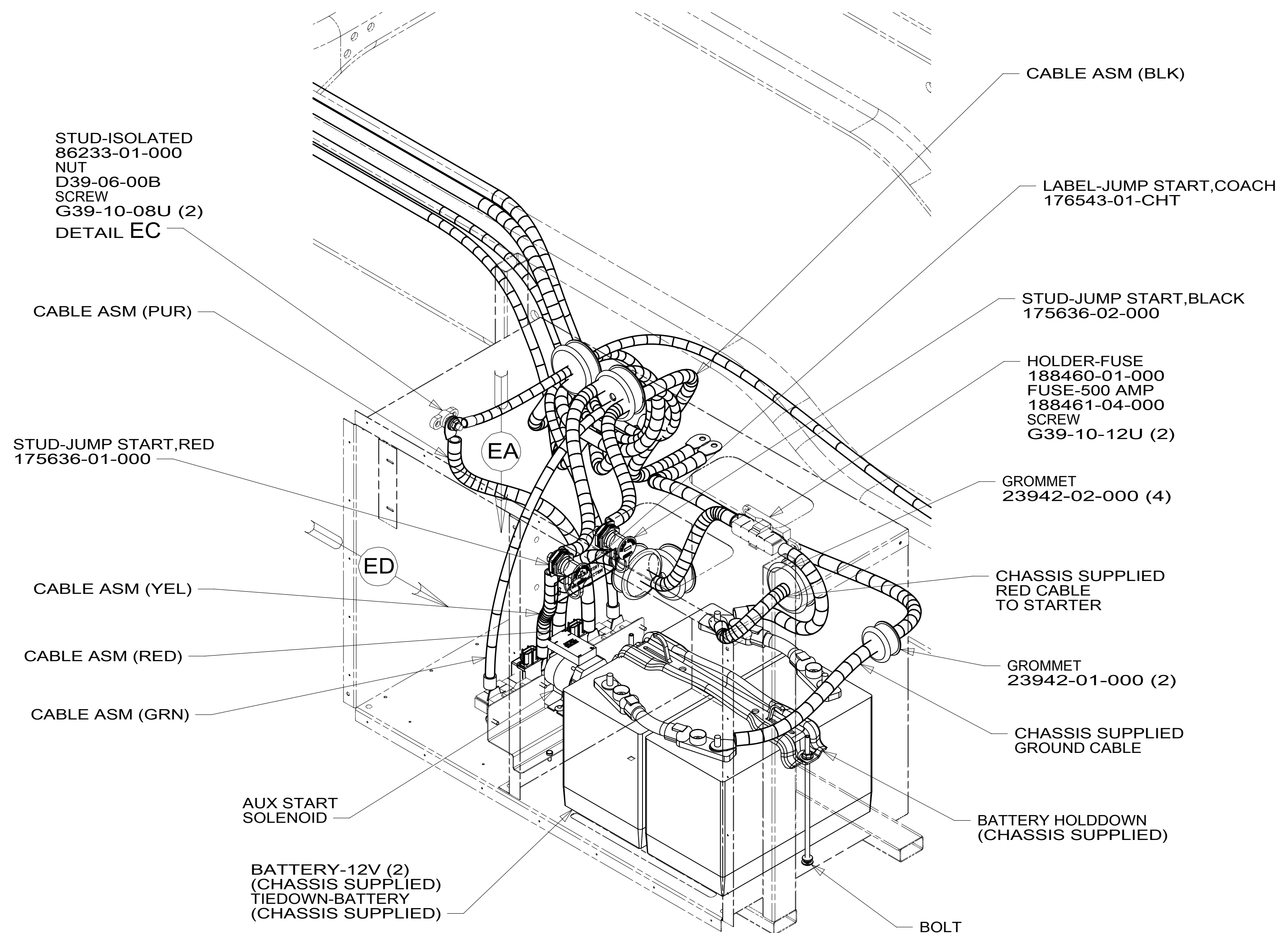
VIEW EA



VIEW ED



DETAIL EC



VIEW EB

1 RELAY CONNECTS TO WIRE ASM-CHASSIS.
 (CHASSIS DISCONNECT LOCKOUT RELAY)

NOTES:

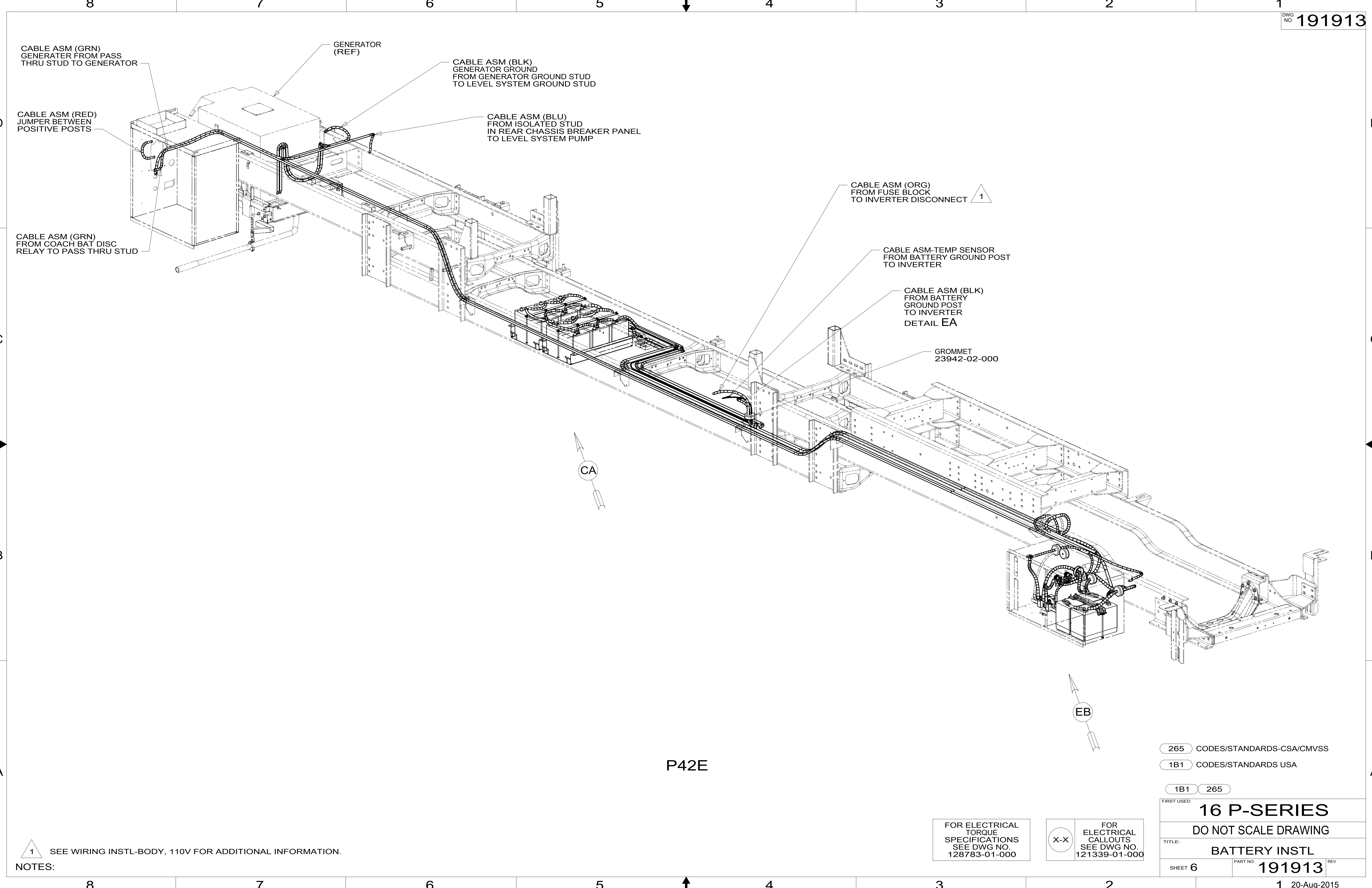
FOR ELECTRICAL TORQUE SPECIFICATIONS SEE DWG NO. 128783-01-000

FOR ELECTRICAL CALLOUTS SEE DWG NO. 121339-01-000

265 CODES/STANDARDS-CSA/CMVSS
 1B1 CODES/STANDARDS USA
 1B1 265

FIRST USED	
16 P-SERIES	
DO NOT SCALE DRAWING	
TITLE: BATTERY INSTL	
SHEET 5	PART NO. 191913 REV
1 20-Aug-2015	

191913



CABLE ASM (GRN)
GENERATOR FROM PASS
THRU STUD TO GENERATOR

GENERATOR
(REF)

CABLE ASM (BLK)
GENERATOR GROUND
FROM GENERATOR GROUND STUD
TO LEVEL SYSTEM GROUND STUD

CABLE ASM (RED)
JUMPER BETWEEN
POSITIVE POSTS

CABLE ASM (BLU)
FROM ISOLATED STUD
IN REAR CHASSIS BREAKER PANEL
TO LEVEL SYSTEM PUMP

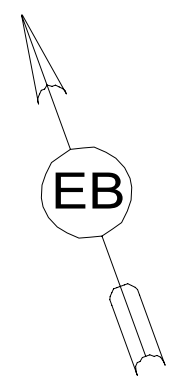
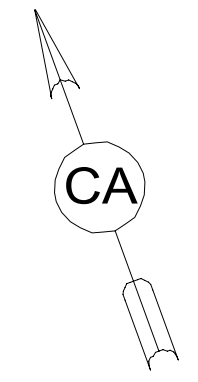
CABLE ASM (GRN)
FROM COACH BAT DISC
RELAY TO PASS THRU STUD

CABLE ASM (ORG)
FROM FUSE BLOCK
TO INVERTER DISCONNECT 1

CABLE ASM-TEMP SENSOR
FROM BATTERY GROUND POST
TO INVERTER

CABLE ASM (BLK)
FROM BATTERY
GROUND POST
TO INVERTER
DETAIL EA

GROMMET
23942-02-000



P42E

265 CODES/STANDARDS-CSA/CMVSS

1B1 CODES/STANDARDS USA

1B1 265

FIRST USED
16 P-SERIES

DO NOT SCALE DRAWING

TITLE:
BATTERY INSTL

SHEET 6 PART NO **191913** REV

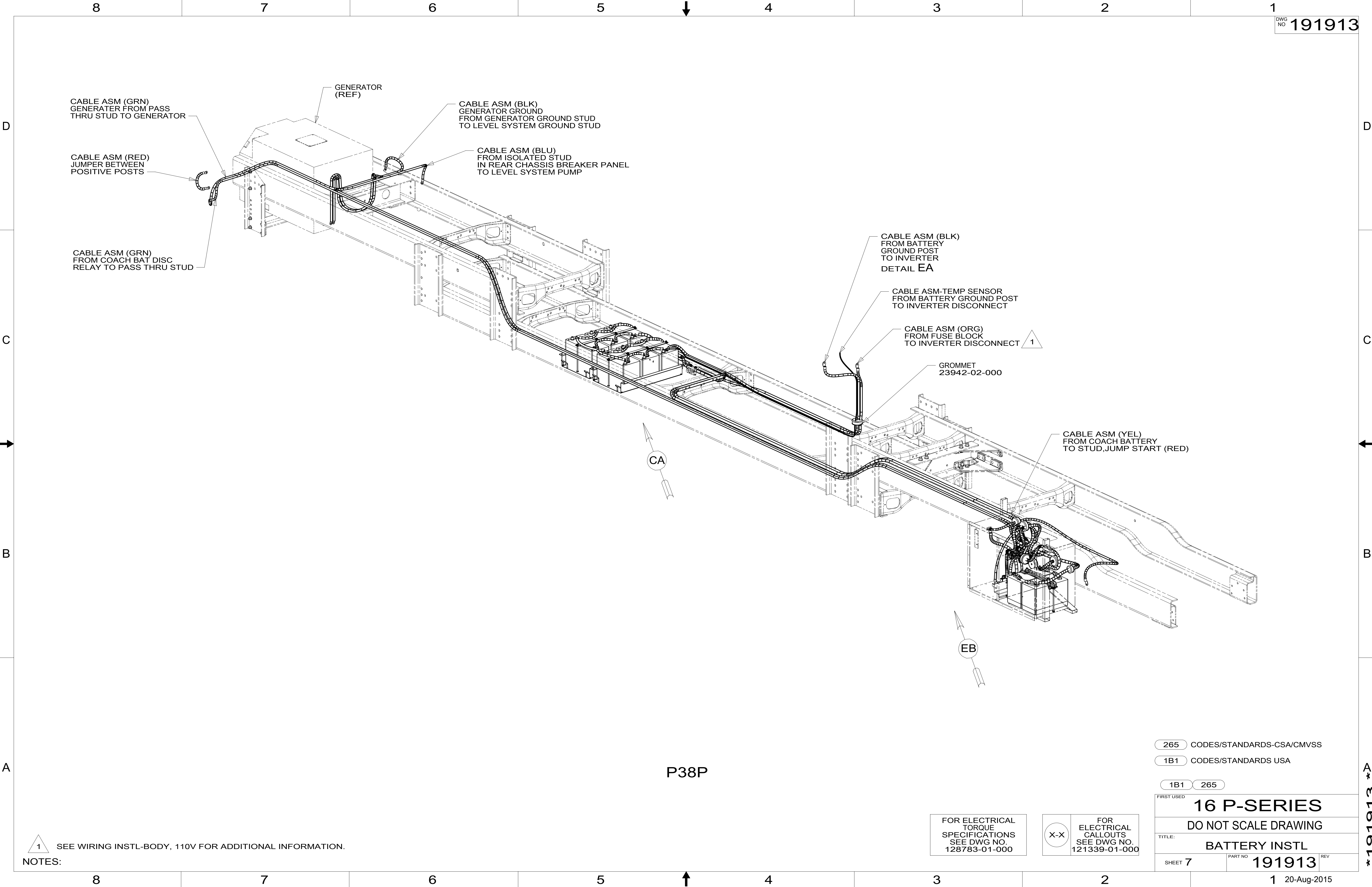
1 20-Aug-2015

1 SEE WIRING INSTL-BODY, 110V FOR ADDITIONAL INFORMATION.

FOR ELECTRICAL
TORQUE
SPECIFICATIONS
SEE DWG NO.
128783-01-000

X-X FOR
ELECTRICAL
CALLOUTS
SEE DWG NO.
121339-01-000

191913



P38P

NOTES:

1 SEE WIRING INSTL-BODY, 110V FOR ADDITIONAL INFORMATION.

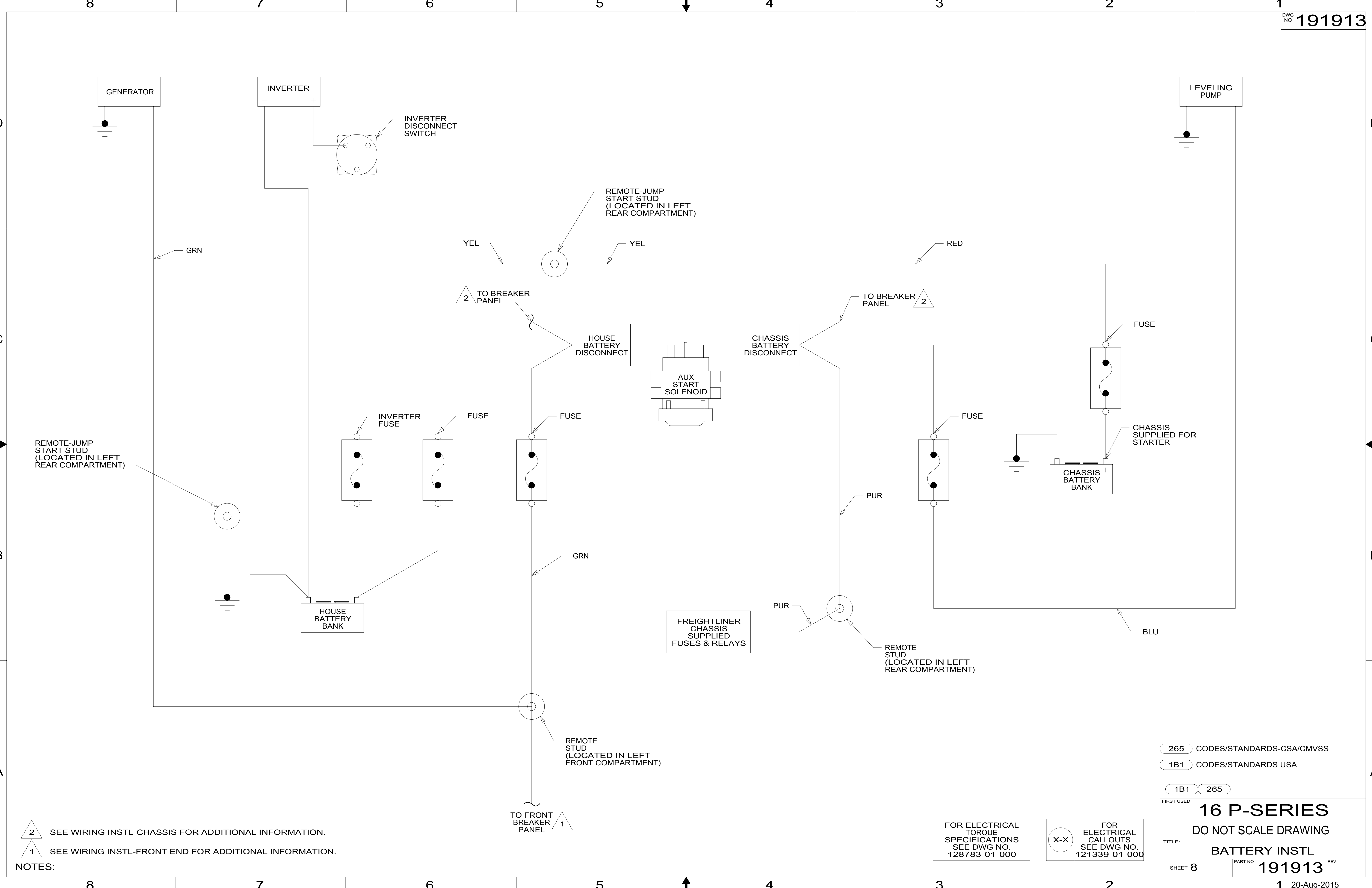
FOR ELECTRICAL TORQUE SPECIFICATIONS SEE DWG NO. 128783-01-000

FOR ELECTRICAL CALLOUTS SEE DWG NO. 121339-01-000

- 265 CODES/STANDARDS-CSA/CMVSS
- 1B1 CODES/STANDARDS USA
- 1B1 265

FIRST USED	
16 P-SERIES	
DO NOT SCALE DRAWING	
TITLE: BATTERY INSTL	
SHEET 7	PART NO 191913 REV

191913



2 SEE WIRING INSTL-CHASSIS FOR ADDITIONAL INFORMATION.
 1 SEE WIRING INSTL-FRONT END FOR ADDITIONAL INFORMATION.

NOTES:

FOR ELECTRICAL TORQUE SPECIFICATIONS SEE DWG NO. 128783-01-000

FOR ELECTRICAL CALLOUTS SEE DWG NO. 121339-01-000

- 265 CODES/STANDARDS-CSA/CMVSS
- 1B1 CODES/STANDARDS USA
- 1B1 265

FIRST USED	
16 P-SERIES	
DO NOT SCALE DRAWING	
TITLE: BATTERY INSTL	
SHEET 8	PART NO 191913 REV

191913