

		J35P	
BLK	1B1	136131-06-040	1
	265	136134-06-040	1
BLU	1B1	136131-02-095	1
	265	136134-02-095	1
BRN	1B1	136131-03-040	1
	265	136134-03-040	1
GLD	1B1	136131-10-040	1
	265	136134-10-040	1
GLD-2	1B1	136131-20-040	1
	265	136134-20-040	1
GRN	1B1	136135-08-032	
	265	136136-08-032	
PUR	1B1	136131-04-040	1
	265	136134-04-040	1
RED	1B1	136135-07-032	
	265	136136-07-032	
WHT	1B1	136135-09-025	
	265	136136-09-025	
YEL	1B1	136131-05-020	
	265	136134-05-020	
YEL-2	1B1	136131-13-040	1
	265	136134-13-040	1
MAIN	1B1	136139-01-085	
	265	136140-01-085	
MAIN GROUND			2
ATS GROUND		136145-01-015	

21M OR 21S

21M OR 21S

1B2

- 1B2 WTR HTR-10GAL/ELEC/LP/MTRAIID
- 21S WASHER & DRYER-PAIR
- 21M WASHER/DRYER PREP
- 78J ELECTRICAL SYSTEM-50 AMP
- 265 CODES/STANDARDS-CSA/CMVSS
- 1B1 CODES/STANDARDS USA

1B1 265 78J



DFTR	ORIG. DATE
CHKR	ALL DIMENSIONS ARE IN MILLIMETERS
P.E.	
M.E.	
DSNR	FIRST USED
<b>16 J35P</b>	
UNSPECIFIED TOLERANCES ARE:	
WHOLE DIM (X)	: 3
ONE-PLACE (X.X)	: 1.5
TWO-PLACE (X.XX)	: 0.50
ANGLE	: 1°
THIRD ANGLE PROJECTION	
DO NOT SCALE DRAWING	REFER TO ES0018 FOR FASTENER TIGHTENING GUIDELINES
TITLE: <b>LOAD CENTER/ATS ASM</b>	
SHEET 1 OF 4	PART NO <b>191614</b> REV
REF:	1 08-Oct-2015

2 PART OF WIRE ASM-CHASSIS.  
1 SEE DETAIL DA.

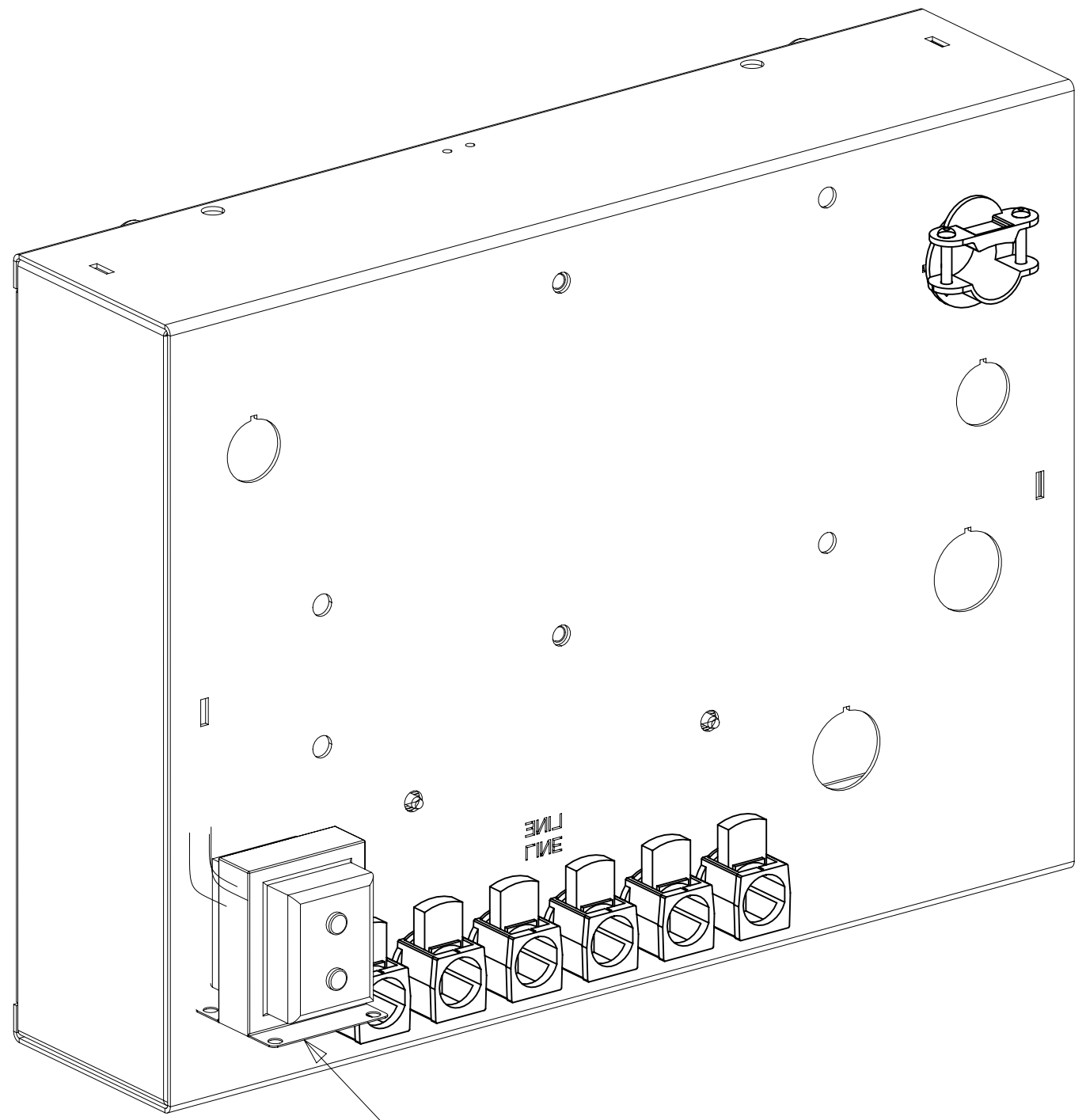
FOR ELECTRICAL TORQUE SPECIFICATIONS SEE DWG NO. 128783-01-000

FOR ELECTRICAL CALLOUTS SEE DWG NO. 121339-01-000

\*191614 \*A

		J35P	
THROW IN WIRE #1	1B1	136131-03-125	1
	265	136134-03-125	1
THROW IN WIRE #2	1B1		
	265		
THROW IN WIRE #3	1B1	136131-12-065	1
	265	136134-12-065	1
THROW IN WIRE #4	1B1	136131-13-028	1
	265	136134-13-028	1
THROW IN WIRE #5	1B1	136131-12-115	3
	265	136134-12-115	3
THROW IN WIRE #6	1B1	136131-04-010	1 401
	265	136134-04-010	1 401
THROW IN WIRE #7	1B1	136131-12-090	1
	265	136134-12-090	1
THROW IN WIRE #8	1B1	136131-12-010	1 401
	265	136134-12-010	1 401
THROW IN WIRE #9	1B1	136131-10-045	1
	265	136134-10-045	1
THROW IN WIRE #10	1B1	136131-20-045	1
	265	136134-20-045	1
THROW IN WIRE #11	1B1	136131-12-018	1 49M 49N
	265	136134-12-018	1 49M 49N

		J35P	
SLIDEOUT WIRE #1	136151-03-017	4	
SLIDEOUT WIRE #2	136151-06-017	4	
SLIDEOUT WIRE #3	136151-12-017	4	
SLIDEOUT WIRE #4	136151-13-017	4	
SLIDEOUT WIRE #5	136151-10-019	4	
SLIDEOUT WIRE #6	136151-12-018	2	
SLIDEOUT WIRE #7	136151-02-027	2	
SLIDEOUT WIRE #8	136151-20-017	5	



DETAIL BA  
(LOAD CENTER SHOWN FROM THE BACK SIDE)

- NOTES:
- 4 SEE DETAIL DE.
  - 3 SEE DETAIL DC.
  - 2 SEE DETAIL DB.
  - 1 SEE DETAIL DA.

- 49N SLEEP NUMBER BED-KING SIZE
- 49M SLEEP NUMBER BED-QUEEN SIZE
- 401 INVERTER-DC/AC, 1000 WATT
- 78J ELECTRICAL SYSTEM-50 AMP
- 265 CODES/STANDARDS-CSA/CMVSS
- 1B1 CODES/STANDARDS USA

1B1 265 78J

FIRST USED

**16 J35P**

DO NOT SCALE DRAWING

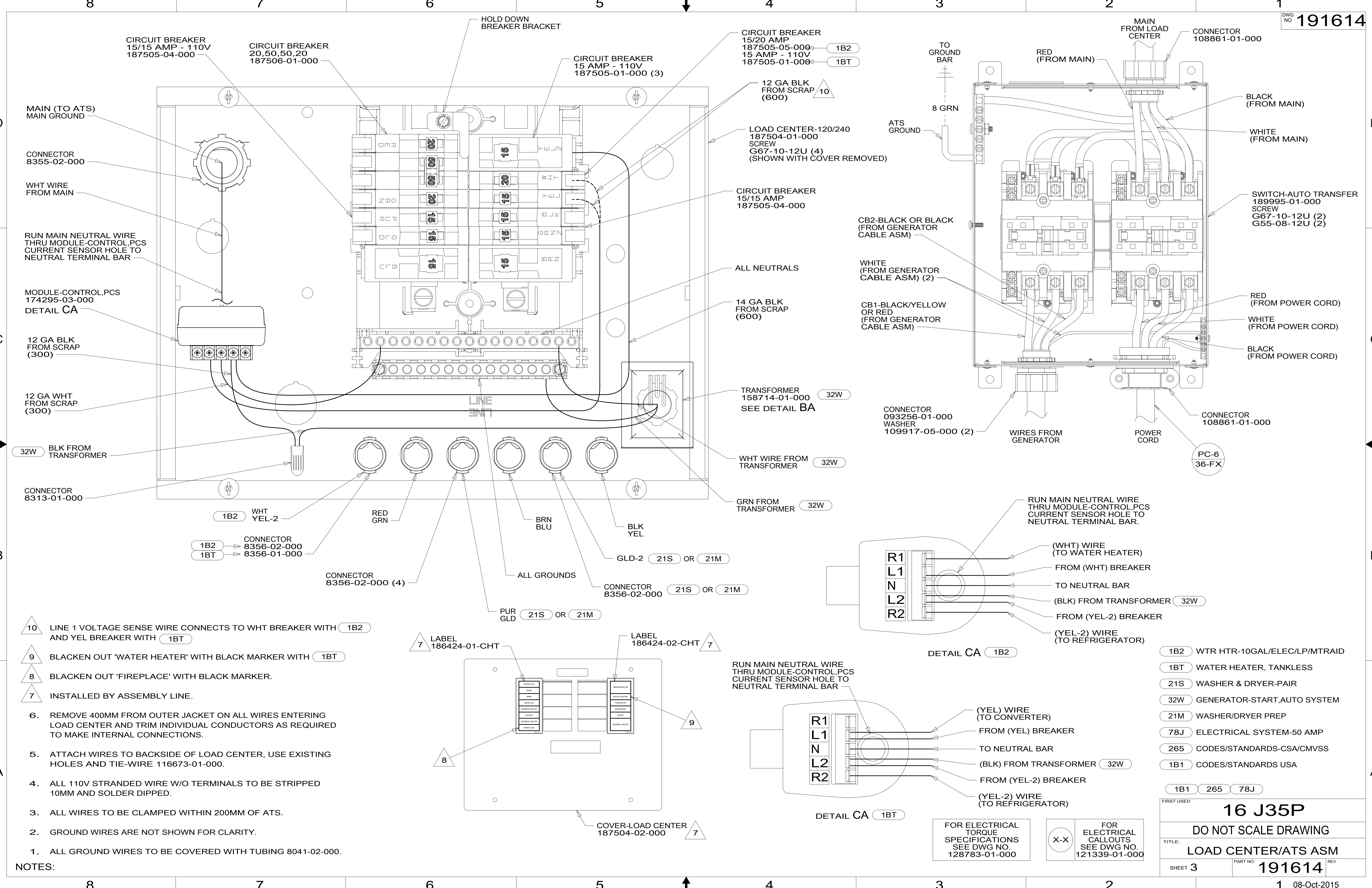
TITLE: **LOAD CENTER/ATS ASM**

SHEET 2 PART NO **191614** REV

FOR ELECTRICAL TORQUE SPECIFICATIONS SEE DWG NO. 128783-01-000

FOR ELECTRICAL CALLOUTS SEE DWG NO. 121339-01-000

\*191614\*



D

C

B

A

D

C

B

A

→

←

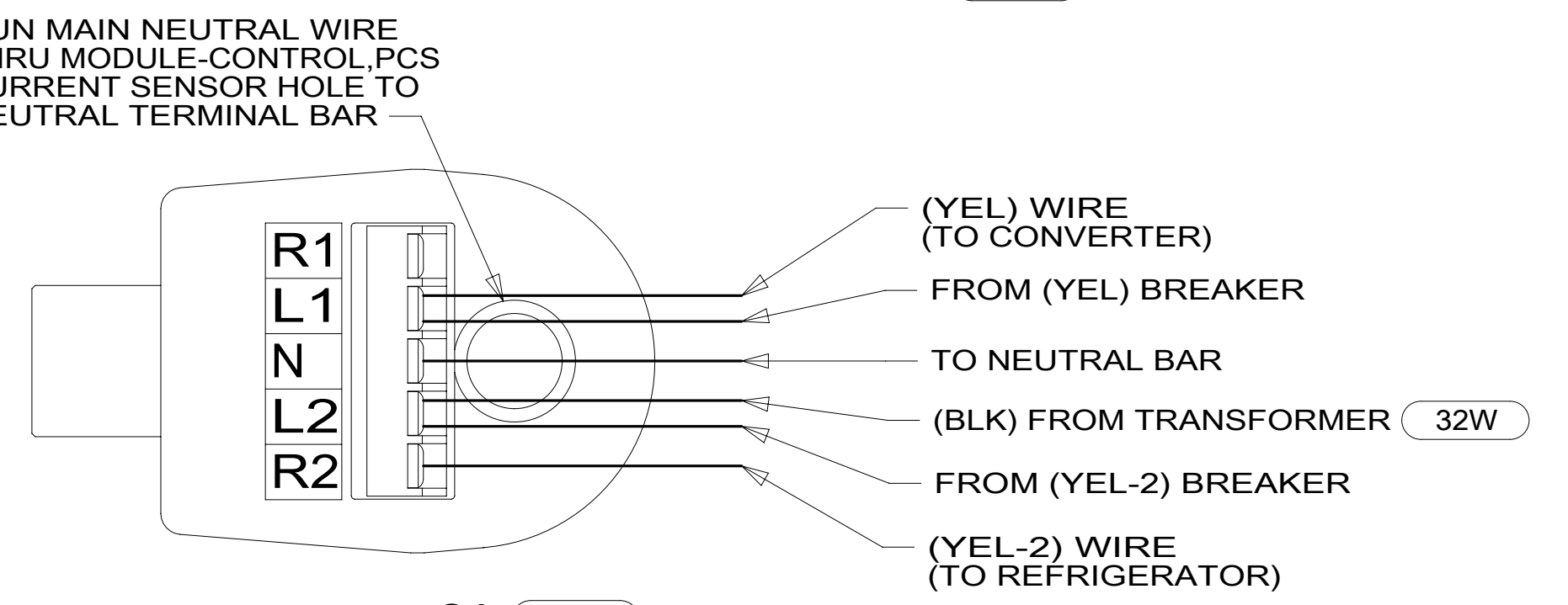
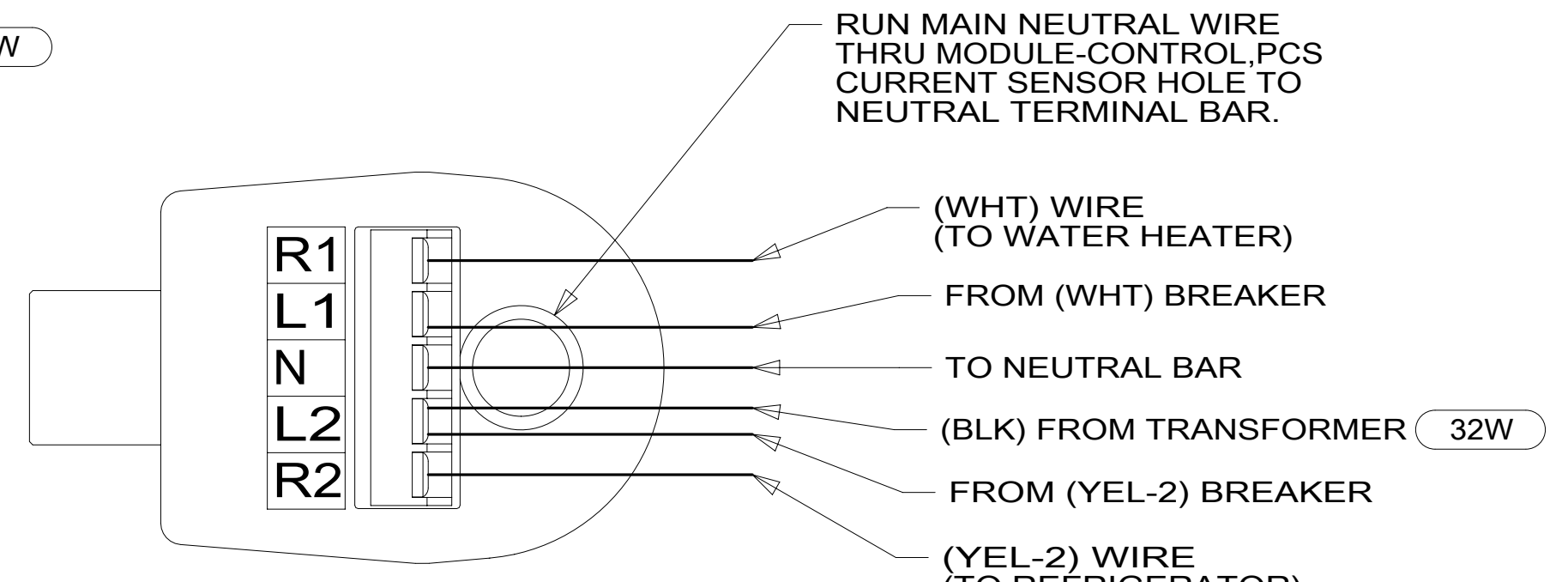
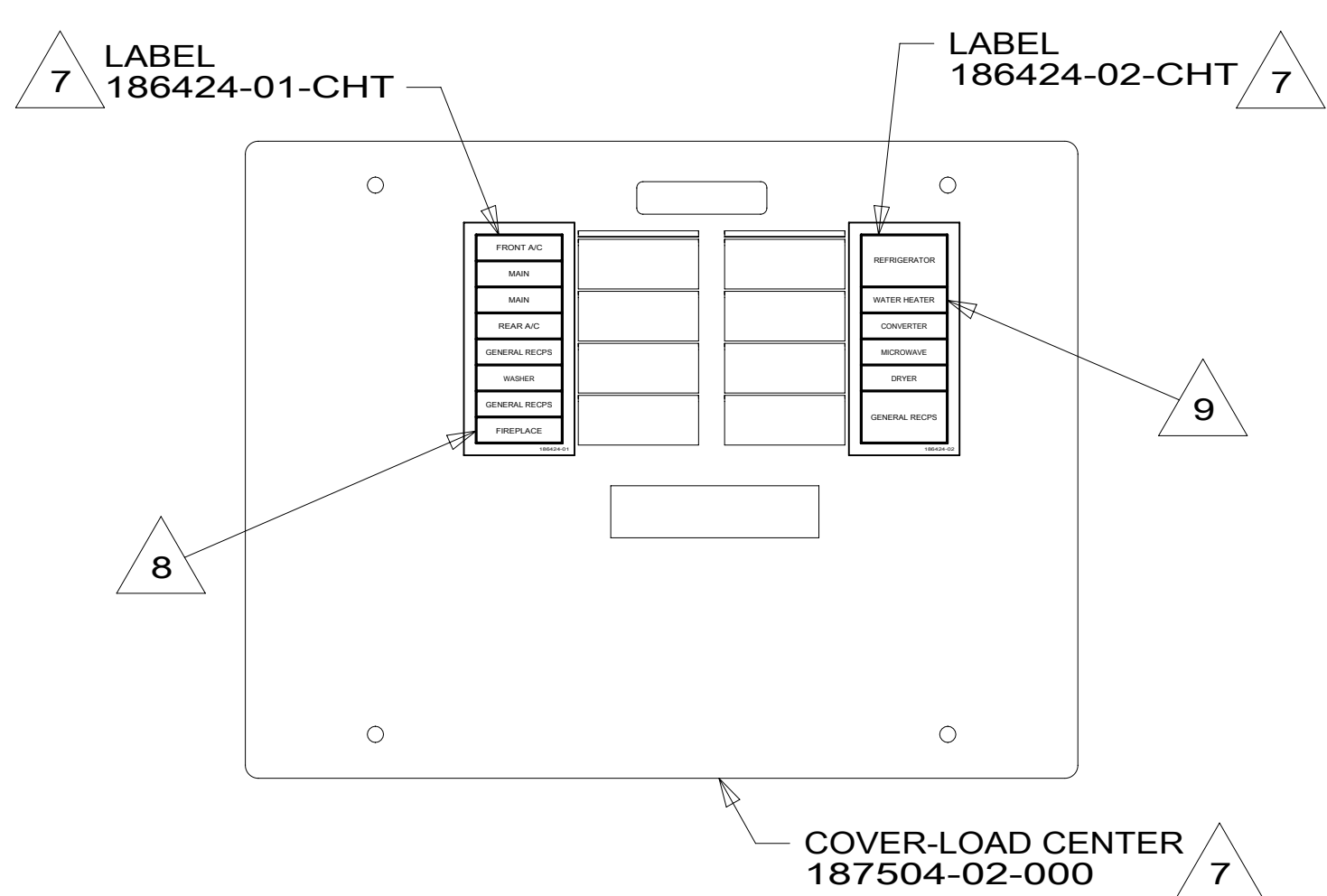
↑

↓

- 10 LINE 1 VOLTAGE SENSE WIRE CONNECTS TO WHT BREAKER WITH 1B2 AND YEL BREAKER WITH 1BT
- 9 BLACKEN OUT 'WATER HEATER' WITH BLACK MARKER WITH 1BT
- 8 BLACKEN OUT 'FIREPLACE' WITH BLACK MARKER.
- 7 INSTALLED BY ASSEMBLY LINE.

6. REMOVE 400MM FROM OUTER JACKET ON ALL WIRES ENTERING LOAD CENTER AND TRIM INDIVIDUAL CONDUCTORS AS REQUIRED TO MAKE INTERNAL CONNECTIONS.
5. ATTACH WIRES TO BACKSIDE OF LOAD CENTER, USE EXISTING HOLES AND TIE-WIRE 116673-01-000.
4. ALL 110V STRANDED WIRE W/O TERMINALS TO BE STRIPPED 10MM AND SOLDER DIPPED.
3. ALL WIRES TO BE CLAMPED WITHIN 200MM OF ATS.
2. GROUND WIRES ARE NOT SHOWN FOR CLARITY.
1. ALL GROUND WIRES TO BE COVERED WITH TUBING 8041-02-000.

NOTES:



FOR ELECTRICAL TORQUE SPECIFICATIONS SEE DWG NO. 128783-01-000

FOR ELECTRICAL CALLOUTS SEE DWG NO. 121339-01-000

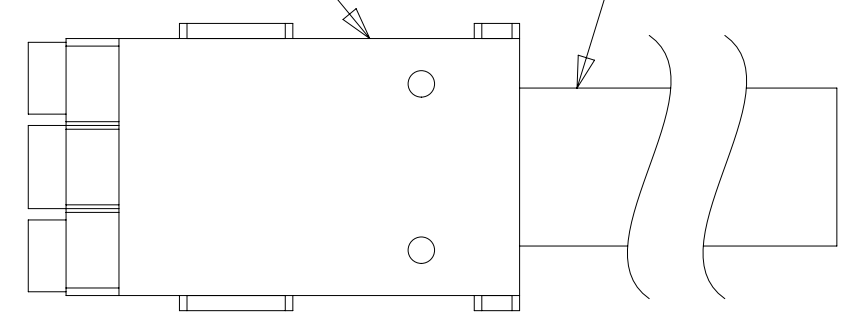
- 1B2 WTR HTR-10GAL/ELEC/LP/MTR/RAID
- 1BT WATER HEATER, TANKLESS
- 21S WASHER & DRYER-PAIR
- 32W GENERATOR-START,AUTO SYSTEM
- 21M WASHER/DRYER PREP
- 78J ELECTRICAL SYSTEM-50 AMP
- 265 CODES/STANDARDS-CSA/CMVSS
- 1B1 CODES/STANDARDS USA

FIRST USED		<b>16 J35P</b>	
DO NOT SCALE DRAWING			
TITLE: <b>LOAD CENTER/ATS ASM</b>			
SHEET 3	PART NO	<b>191614</b>	REV
			08-Oct-2015

\*191614\*

CONNECTOR-WIRE,NM,CLEAR  
144283-02-000

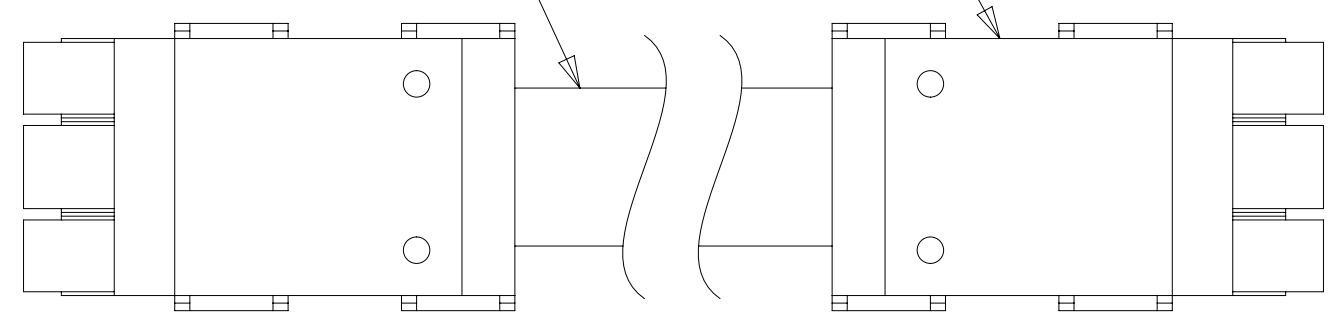
THROW IN WIRE OR  
WIRE FROM LOAD CENTER



DETAIL DA

CONNECTOR-WIRE,SOW,BLUE  
144283-01-000 (2)

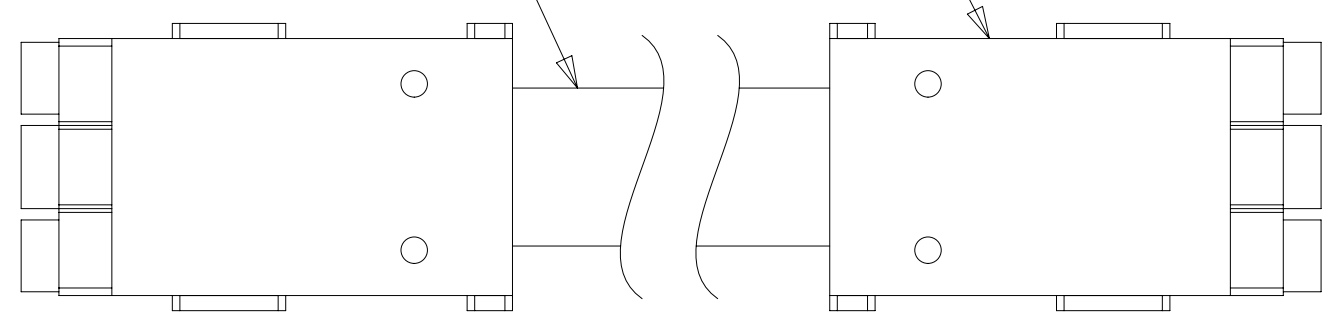
SLIDEOUT WIRE



DETAIL DB

CONNECTOR-WIRE,NM,CLEAR  
144283-02-000 (2)

THROW IN WIRE

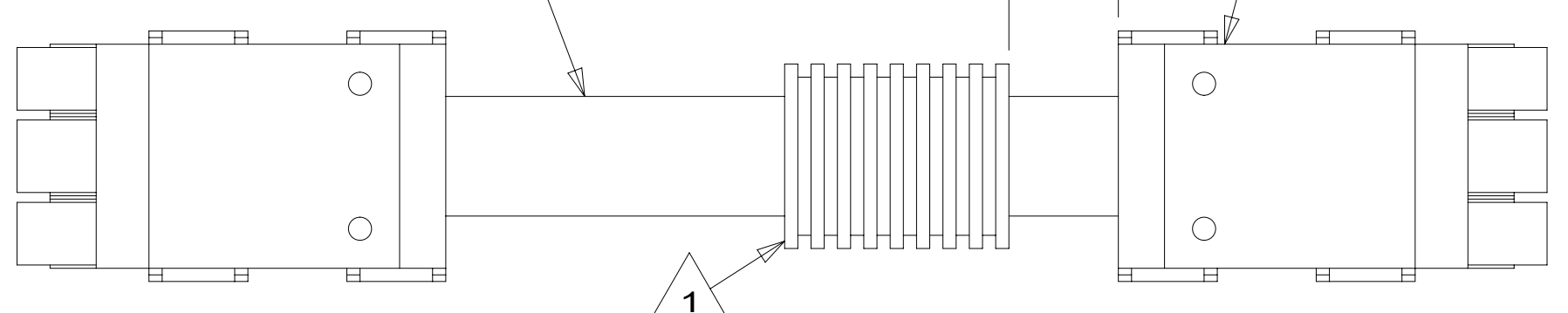


DETAIL DC

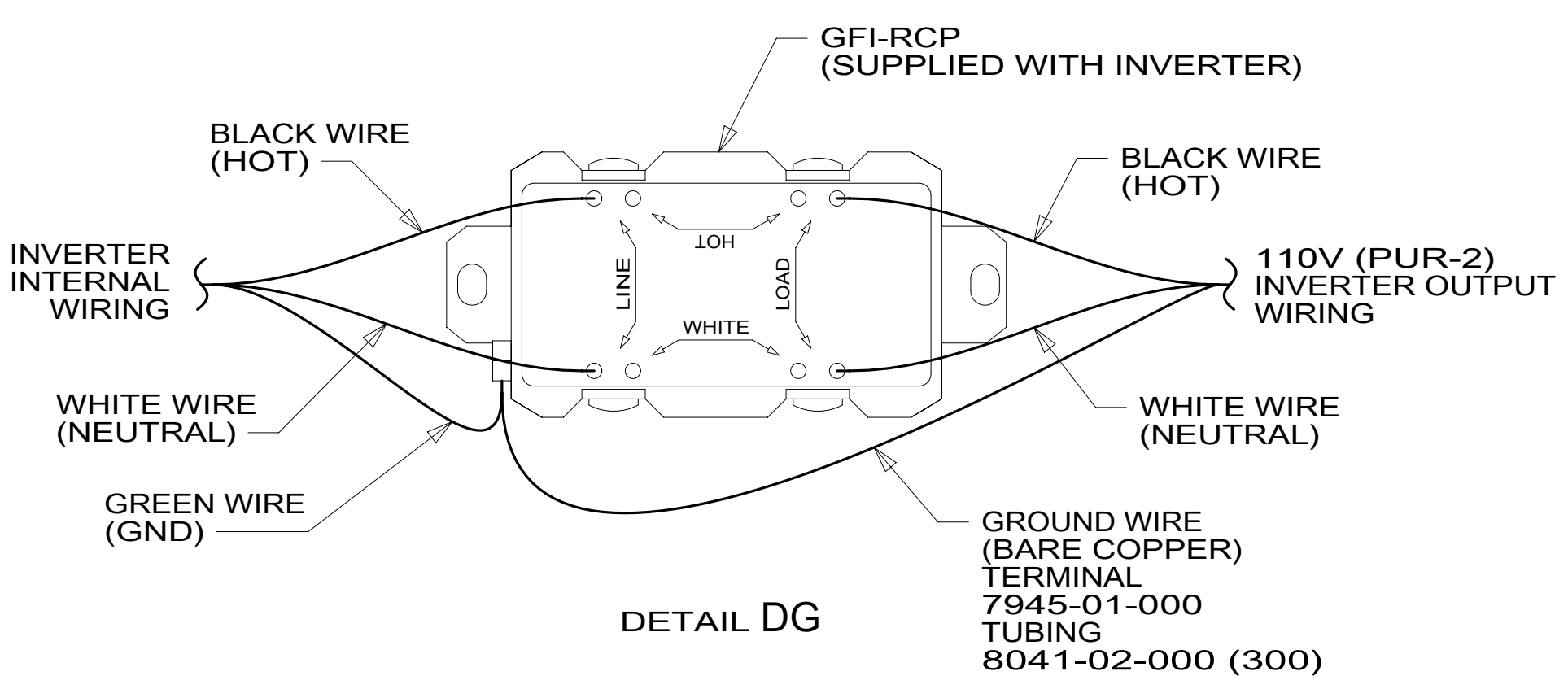
SLIDEOUT WIRE

150

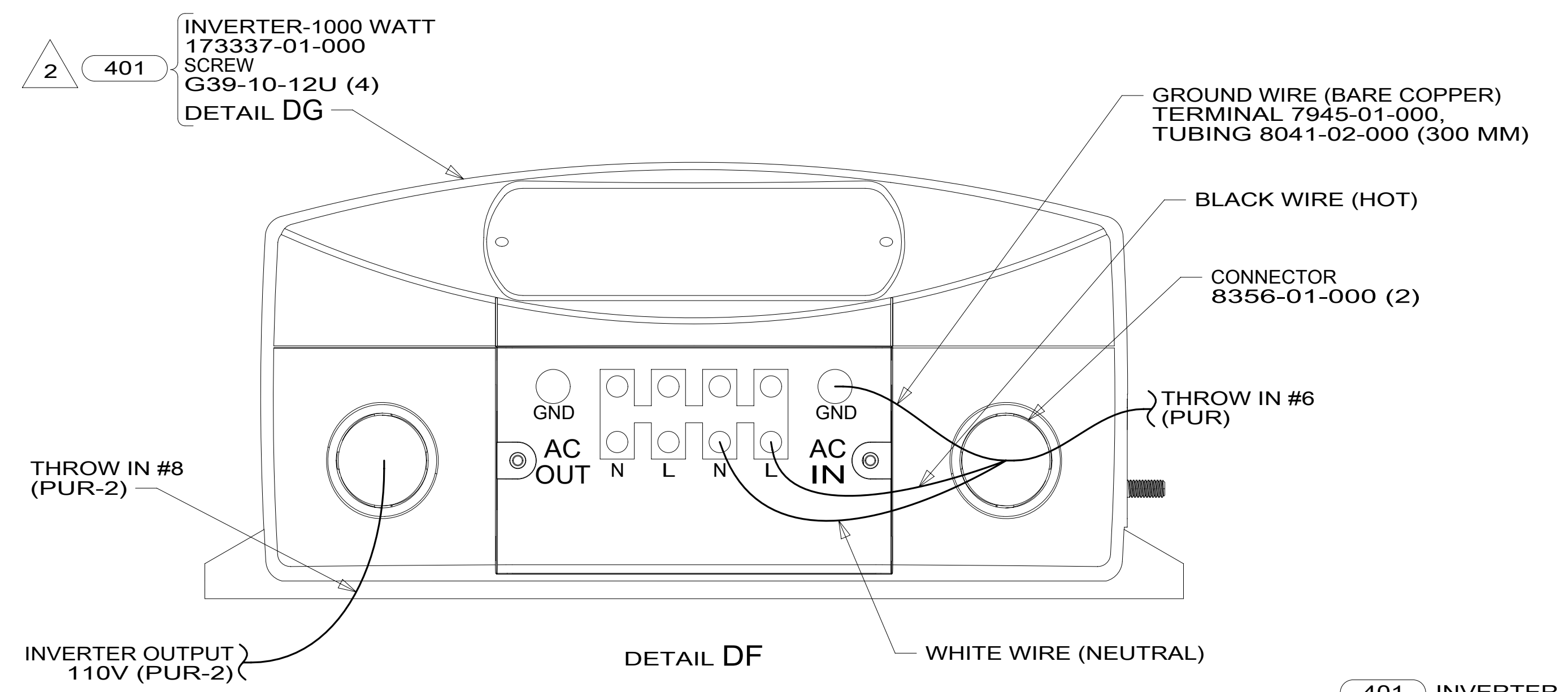
CONNECTOR-WIRE,SOW,BLUE  
144283-01-000 (2)



DETAIL DE



DETAIL DG



DETAIL DF

- NOTES:
- 2 INVERTER SUPPLIED WITH REMOTE PANEL. SEND PANEL TO MANUFACTURING LINE.
  - 1 APPLY 300MM OF CONDUIT-CONVOLUTE 41953-05-000 OVER WIRE AT DIMENSION SHOWN AND SECURE BOTH ENDS OF TUBING TO WIRE WITH TAPE 8363-01-000.

- 401 INVERTER-DC/AC, 1000 WATT
- 78J ELECTRICAL SYSTEM-50 AMP
- 265 CODES/STANDARDS-CSA/CMVSS
- 1B1 CODES/STANDARDS USA

FIRST USED	
<b>16 J35P</b>	
DO NOT SCALE DRAWING	
TITLE: <b>LOAD CENTER/ATS ASM</b>	
SHEET 4	PART NO <b>191614</b> REV
1 08-Oct-2015	

FOR ELECTRICAL TORQUE SPECIFICATIONS SEE DWG NO. 128783-01-000

FOR ELECTRICAL CALLOUTS SEE DWG NO. 121339-01-000

\*191614\*A