

DRAWING NO.	MODEL	SHEET
191493-01	E27N	1,2,3,6
191493-02	E26HE	1,2,3,7
191493-03	E30T	1,2,3,6
191493-04	E31KE	1,2,3,7
191493-05	E35B	1,2,3,6
191493-06	E35F	1,2,3,6
191493-07	E31BE	1,2,3,7
191493-08	E36Y	1,4,5,6

RELEASE A REV DATE DWG NO. 191493
 REV ZONE REVISION RECORD DATE DTR-ORIG

	E26HE	E27N	E30T	E31KE	E35B	E35F	E31BE	E36Y
CABLE ASM-CHASSIS GND EXT (BLK)	133566-12-018	133566-12-011	133566-12-032	133566-12-011	133566-12-011	133566-12-010	133566-12-028	133566-12-034
CABLE ASM-CHASSIS BATTERY DISCONNECT SUPPLY (RED)	141415-32-010	141415-32-026	141415-32-034	141415-32-023	141415-32-024	141415-32-026	141415-32-052	141415-32-042
CABLE ASM-COACH BATTERY DISCONNECT SUPPLY (YEL)	141416-52-014	141416-52-024	141416-52-037	141416-52-020	141416-52-024	141416-52-023	141416-52-055	141416-52-056
CABLE ASM-COACH BATTERY GND (BLK)	133567-12-008	133567-12-008	133567-12-008	133567-12-008	133567-12-008	133567-12-008	133567-12-008	133567-12-008
CABLE ASM-CHASSIS BATTERY DISCONNECT RETURN (PUR)		141415-12-028	141415-12-027		141415-12-028	141415-12-030		141415-12-032
CABLE ASM-GENERATOR (GRN)	141415-42-071	141415-42-067	141415-42-074	141415-42-080	141415-42-106	141415-42-104	141415-42-079	141415-42-118
CABLE ASM-GENERATOR GND (BLK)	133566-12-008	133566-12-008	133566-12-008	133566-12-008			133566-12-008	
LEVELING SYSTEM POWER CABLE (BLU)	60M 141415-29-023	141415-29-015	141415-29-010	141415-29-023	141415-29-011	141415-29-011	141415-29-023	141415-29-011
LEVELING SYSTEM GND CABLE (BLK)	60M 133566-12-008	133566-12-008	133566-12-008	133566-12-008	133566-12-008	133566-12-008	133566-12-008	133566-12-008
WIRE ASM-INVERTER	401	154845-02-025	154845-02-035		154845-02-031	154845-02-026		
CABLE ASM-STARTER (RED)	141416-32-016	141416-32-010	141416-32-032	141416-32-010	141416-32-010	141416-32-010	141416-32-030	141416-32-35
CABLE ASM (ORG) FROM COACH BATTERY TO INVERTER FUSE								175207-62-005
CABLE ASM (ORG) FROM INVERTER FUSE TO INVERTER BATT DISCONNECT								175207-62-032
CABLE ASM (ORG) FROM BATTERY DISCONNECT TO POSITIVE POST ON INVERTER								175207-62-006
CABLE ASM (BLK) FROM COACH BATTERY TO INVERTER NEGATIVE TERMINAL								175211-02-026
CABLE ASM (YEL) JUMPER BETWEEN POSITIVE POSTS ON COACH BATTERY							141417-52-004 141417-51-002 ← 15L	
CABLE ASM (BLK) JUMPER BETWEEN NEGATIVE POSTS ON COACH BATTERY							133568-12-004 133568-11-002 ← 15L	
CABLE ASM-INVERTER GROUND (GRN)								136145-01-014
CABLE ASM-COACH BATTERY FUSE	141416-52-003	141416-52-003	141416-52-003	141416-52-003	141416-52-003	141416-52-003	141416-52-003	141416-52-003
CABLE ASM-CHASSIS BATTERY FUSE	141415-32-003	141415-32-003	141415-32-003	141415-32-003	141415-32-003	141415-32-003	141415-32-003	141415-32-003

- 15L RESIDENTIAL REFRIGERATOR PKG
- 60M HYDRAULIC LEVEL JACKS-AUTO
- 401 INVERTER-DC/AC, 1000 WATT
- 265 CODES/STANDARDS-CSA/CMVSS
- 1B1 CODES/STANDARDS USA

WINNEBAGO COPYRIGHT 2014 WINNEBAGO INDUSTRIES, INC.

UNSPECIFIED TOLERANCES ARE:
 WHOLE DIM (X) : 3
 ONE-PLACE (X.X) : 1.5
 TWO-PLACE (X.XX) : 0.50
 ANGLE : 1°

THIRD ANGLE PROJECTION

DO NOT SCALE DRAWING REFER TO ES0018 FOR FASTENER TIGHTENING GUIDELINES

TITLE: **BATTERY INSTL**

SHEET 1 OF 7 PART NO. 191493 REV 1 21-Sep-2015

FOR ELECTRICAL TORQUE SPECIFICATIONS SEE DWG NO. 128783-01-000

FOR ELECTRICAL CALLOUTS SEE DWG NO. 121339-01-000

D

D

C

C

B

B

A

A

191493

REMOVE 1 GA BLACK WIRE MARKED WITH ORANGE TAPE FROM WIRE ASM-INVERTER AND ATTACH ONE END TO FUSE BLOCK AND THE OTHER END TO THE POSITIVE BATTERY POST AS SHOWN

401 FUSE HOLDER 115187-02-000 SCREW G39-10-16B (2) FUSE-150 AMP 115187-03-000

FUSE HOLDER 188460-01-000 FUSE-400A 188461-03-000 SCREW G42-04-12U (2)

CABLE ASM-COACH BATTERY FUSE (YEL)

CABLE ASM-CHASSIS BATTERY DISCONNECT RETURN (PUR) 6

401 1 GA BLACK WIRES MARKED WITH ORANGE TAPE FROM WIRE ASM-INVERTER CONNECTS TO FUSE BLOCK AS SHOWN

CABLE ASM (RED) 141415-32-002

FUSE HOLDER 188460-01-000 FUSE-400A 188461-03-000 SCREW G42-04-12U (2)

CABLE ASM-CHASSIS GND EXT (BLK) TO GROUND BOLT ON FRAME RAIL 5

CABLE ASM-STARTER (RED) TO LOWER ISOLATED STUD ON FRAME RAIL 5

401 UNMARKED 1 & 8 GA GREEN WIRES FROM WIRE ASM-INVERTER CONNECTS TO GROUND BAR

CABLE ASM-CHASSIS BATTERY DISCONNECT SUPPLY (RED) TO CHASSIS ELECTRICAL BOX 6

CABLE ASM-CHASSIS BATTERY FUSE (RED)

6 CABLE ASM-COACH BATTERY DISCONNECT SUPPLY (YEL) TO CHASSIS ELECTRICAL BOX

TERMINAL-BATTERY 47441-01-000

401 TO INVERTER CONNECTIONS IN COMPARTMENT SEE WIRING INSTL-BODY, 110V FOR ADDITIONAL INFORMATION

CHASSIS SUPPLIED GROUND CABLE 2

CABLE ASM-COACH BATTERY GND (BLK)

1 BATTERY (CHASSIS SUPPLIED) TIEDOWN ASM 160014-03-CHT BOLT 51387-06-000 (2) NUT D39-06-00B (2) WASHER-RUBBER 184541-01-CHT (2)

4 CABLE ASM (BLK) 133566-11-002

BATTERY 63739-01-000 (2) TIEDOWN ASM 160014-03-CHT (2) BOLT 51387-06-000 (2) NUT D39-06-00B (3) WASHER-RUBBER 184541-01-CHT (2)

- 6 SEE CHASSIS ELECTRICAL BOX ASM FOR ADDITIONAL INFORMATION.
- 5 SEE WIRING INSTL-CHASSIS FOR ADDITIONAL INFORMATION.
- 4 USE TWO NUTS HERE TO ACCOUNT FOR BATTERY HEIGHT DIFFERENCE.
- 3 SEE LEVELING SYSTEM INSTL FOR ADDITIONAL INFORMATION.
- 2 LOCATE CHASSIS SUPPLIED GROUND CABLE, REDUCE LENGTH TO 700MM AND ADD TERMINAL 8348-01-000 TO THE CUT END.
- 1 SUPPLIED WITH CHASSIS.

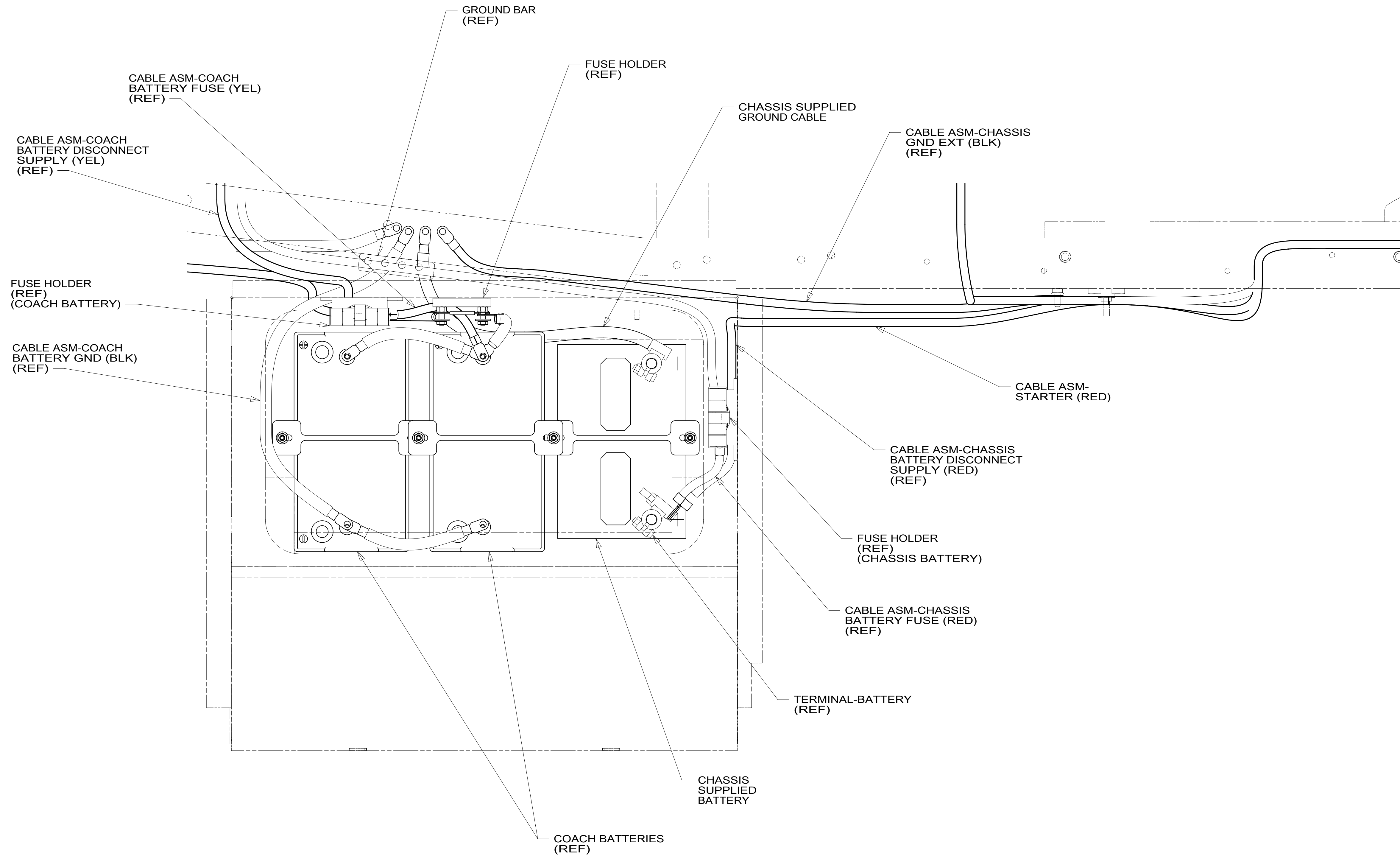
- 401 INVERTER-DC/AC, 1000 WATT
- 265 CODES/STANDARDS-CSA/CMVSS
- 1B1 CODES/STANDARDS USA

FIRST USED	
16 E-SERIES	
DO NOT SCALE DRAWING	
TITLE: BATTERY INSTL	
SHEET 2	PART NO 191493 REV

FOR ELECTRICAL TORQUE SPECIFICATIONS SEE DWG NO. 128783-01-000

FOR ELECTRICAL CALLOUTS SEE DWG NO. 121339-01-000

191493



VIEW CA

265 CODES/STANDARDS-CSA/CMVSS

1B1 CODES/STANDARDS USA

1B1 265

FIRST USED **16 E-SERIES**

DO NOT SCALE DRAWING

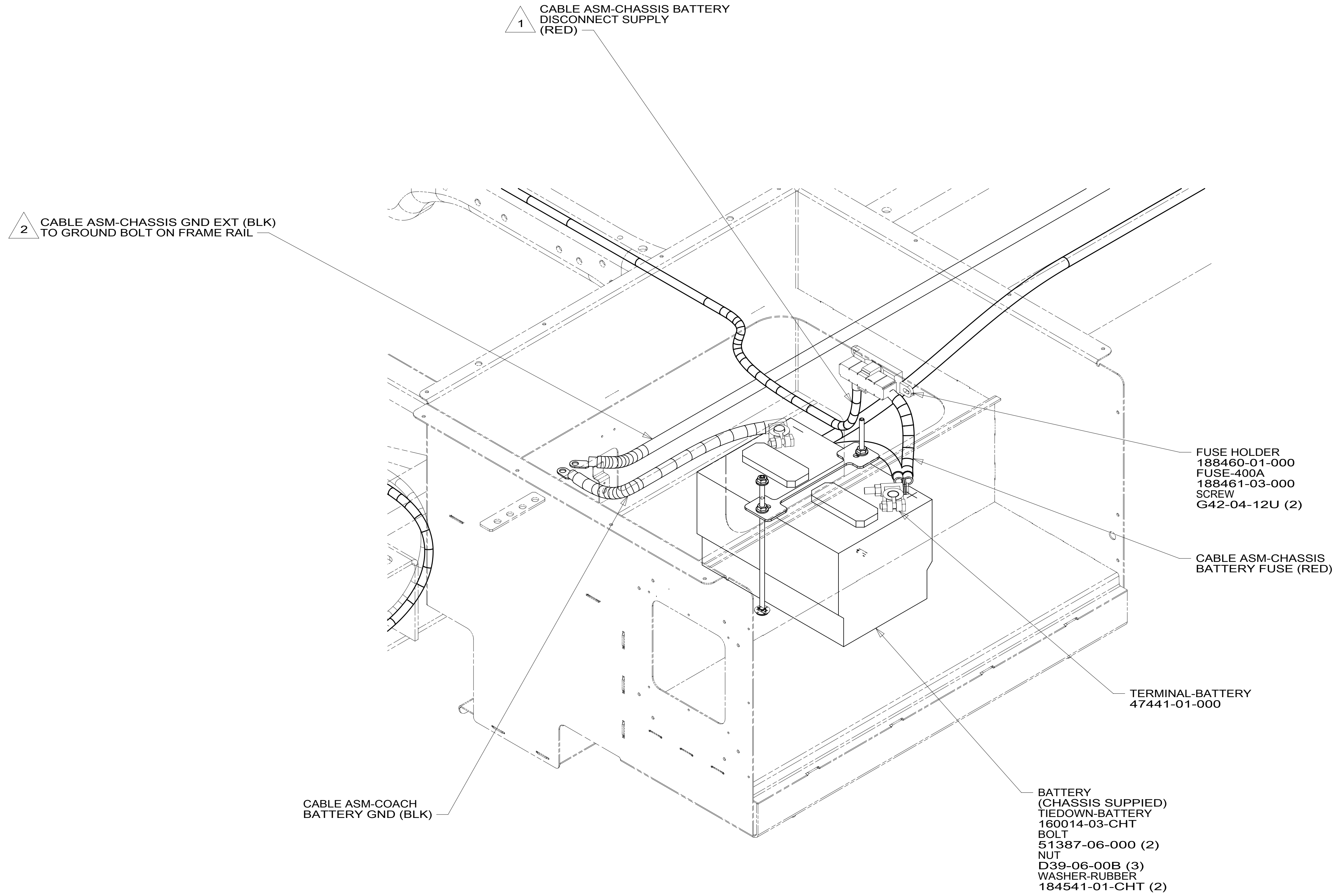
TITLE: **BATTERY INSTL**

SHEET 3 PART NO **191493** REV

FOR ELECTRICAL TORQUE SPECIFICATIONS SEE DWG NO. 128783-01-000

FOR ELECTRICAL CALLOUTS SEE DWG NO. 121339-01-000

191493



2 SEE WIRING INSTL-CHASSIS FOR ADDITIONAL INFORMATION.
 1 SEE CHASSIS ELECTRICAL BOX ASM FOR ADDITIONAL INFORMATION.

NOTES:

FOR ELECTRICAL TORQUE SPECIFICATIONS SEE DWG NO. 128783-01-000

X-X FOR ELECTRICAL CALLOUTS SEE DWG NO. 121339-01-000

265 CODES/STANDARDS-CSA/CMVSS

1B1 CODES/STANDARDS USA

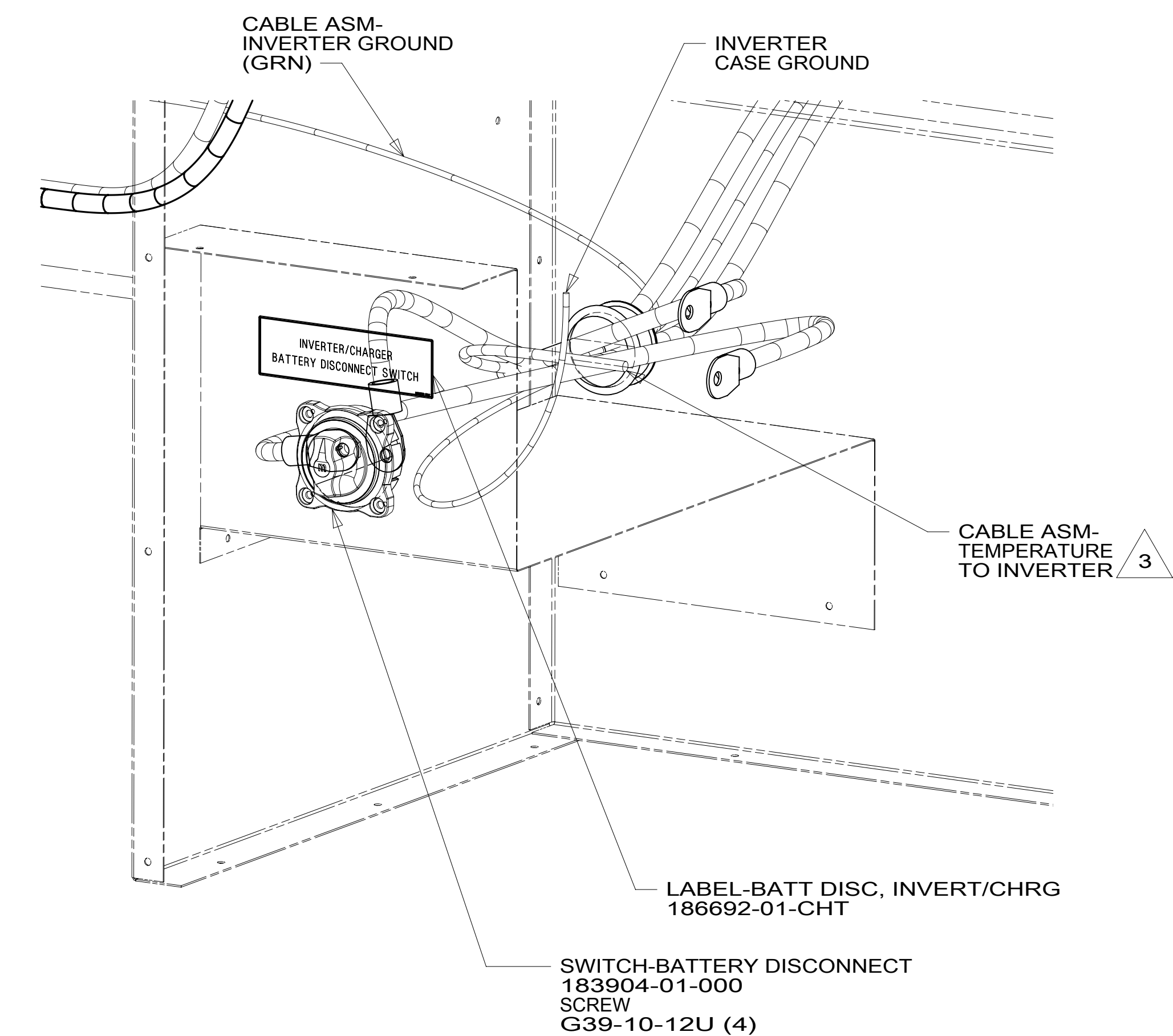
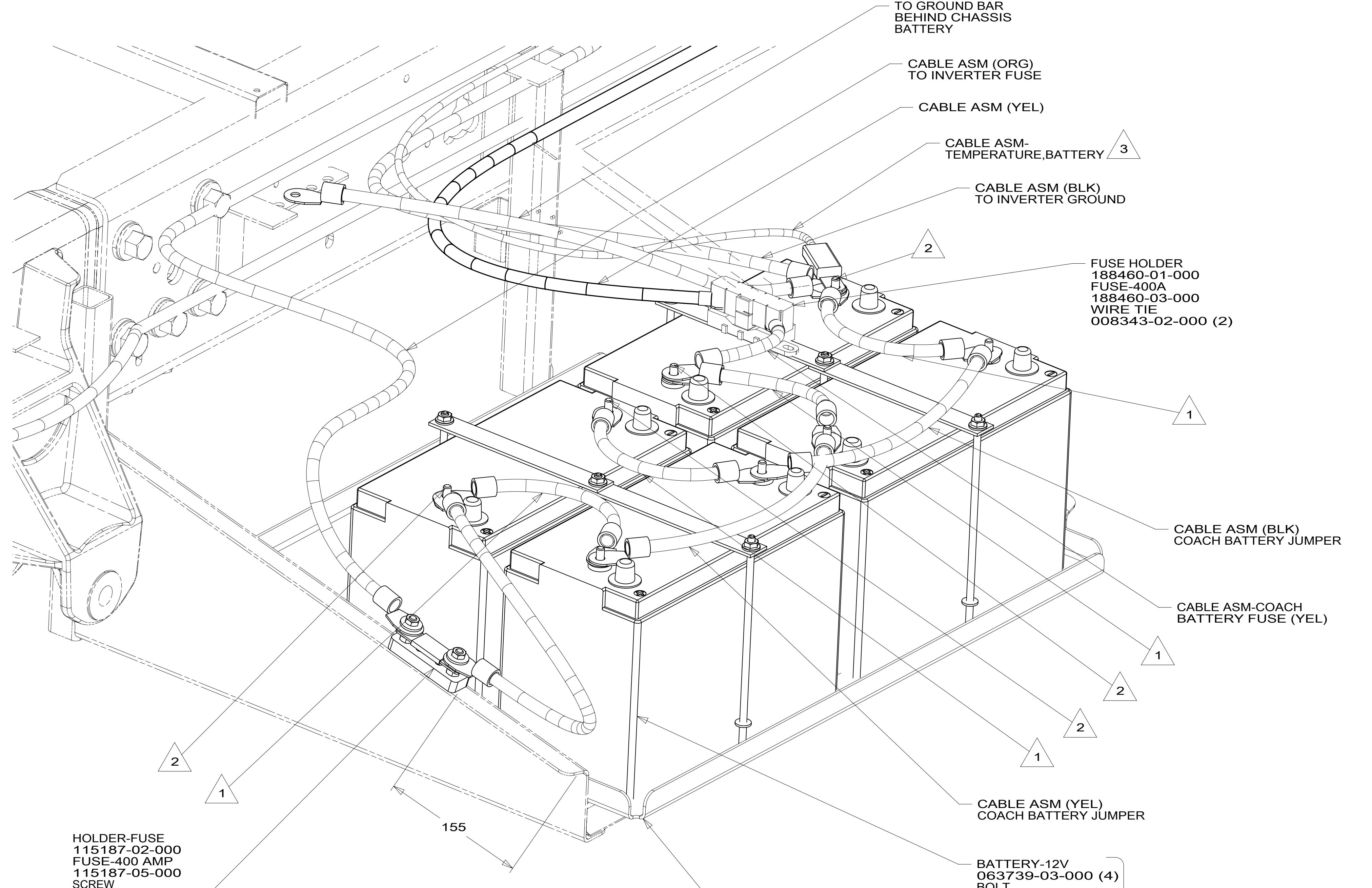
1B1 265

FIRST USED **16 E-SERIES**

DO NOT SCALE DRAWING

TITLE: **BATTERY INSTL**

SHEET 4 PART NO **191493** REV



HOLDER-FUSE
115187-02-000
FUSE-400 AMP
115187-05-000
SCREW
G36-10-12U (2)

155

TRAY-BATTERY
176574-03-CHT
NUT
D39-06-00U
WASHER
E13-17-00U
BOLT
C26-06-12U

BATTERY-12V
063739-03-000 (4)
BOLT
51387-06-000 (6)
NUT-HEX
D39-05-00U (6)
WASHER-RUBBER
184541-01-CHT (6)
STRAP-BATTERY
TIE DOWN
138914-01-CHT (4)
BATTERY-12V
063739-03-000 (2)
BOLT
51387-06-000 (4)
NUT-HEX
D39-05-00U (4)
WASHER-RUBBER
184541-01-CHT (4)
STRAP-BATTERY
TIE DOWN
138914-01-CHT (2)

15L

79W

- 3 CABLE ASM-TEMPERATURE IS PART OF WIRE ASM-CHASSIS.
- 2 CONNECT TO OUTER BATTERY WITH OPTION 79W
OPTION 15L SHOWN.
- 1 CABLE NOT USED WITH OPTION 79W

NOTES:

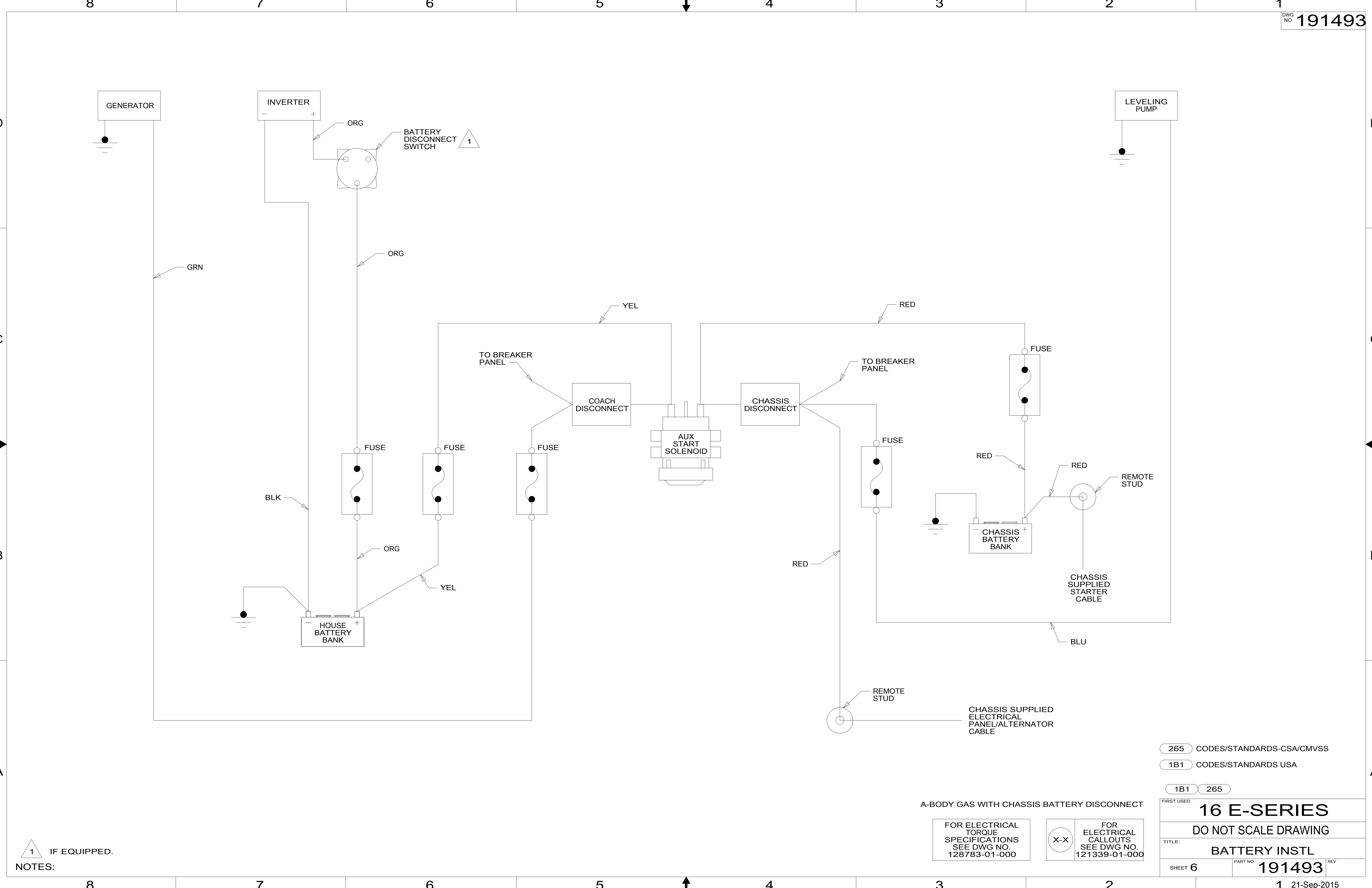
FOR ELECTRICAL
TORQUE
SPECIFICATIONS
SEE DWG NO.
128783-01-000

FOR
ELECTRICAL
CALLOUTS
SEE DWG NO.
121339-01-000

- 79W REFRIGERATOR-4 DOOR
- 15L RESIDENTIAL REFRIGERATOR PKG
- 265 CODES/STANDARDS-CSA/CMVSS
- 1B1 CODES/STANDARDS USA

FIRST USED	
16 E-SERIES	
DO NOT SCALE DRAWING	
TITLE: BATTERY INSTL	
SHEET 5	PART NO 191493 REV
1 21-Sep-2015	

191493



NOTES:
 1 IF EQUIPPED.

A-BODY GAS WITH CHASSIS BATTERY DISCONNECT

FOR ELECTRICAL TORQUE SPECIFICATIONS SEE DWG NO. 128783-01-000

FOR ELECTRICAL CALLOUTS SEE DWG NO. 121339-01-000

265 CODES/STANDARDS-CSA/CMVSS

1B1 CODES/STANDARDS USA

1B1 265

FIRST USED **16 E-SERIES**

DO NOT SCALE DRAWING

TITLE: **BATTERY INSTL**

SHEET 6 PART NO **191493** REV

191493

GENERATOR

LEVELING PUMP

HOUSE BATTERY BANK

AUX START SOLENOID

CHASSIS BATTERY BANK

COACH DISCONNECT

FUSE

FUSE

FUSE

FUSE

GRN

YEL

RED

TO BREAKER PANEL

TO BREAKER PANEL

YEL

RED

CHASSIS SUPPLIED STARTER CABLE

BLU

CHASSIS SUPPLIED ELECTRICAL PANEL/ALTERNATOR CABLE

265 CODES/STANDARDS-CSA/CMVSS

1B1 CODES/STANDARDS USA

1B1 265

A-BODY GAS WITHOUT CHASSIS BATTERY DISCONNECT

FOR ELECTRICAL TORQUE SPECIFICATIONS SEE DWG NO. 128783-01-000

FOR ELECTRICAL CALLOUTS SEE DWG NO. 121339-01-000

16 E-SERIES

DO NOT SCALE DRAWING

TITLE: BATTERY INSTL

SHEET 7

PART NO 191493

1 21-Sep-2015

191493