

DRAWING NO.	MODEL	SHEETS
191432-01	J32D	1,8,9,10,11
191432-02	J37F	1,7,8,9,11
191432-03	J35P	1,2,3,11
191432-04	J38Q	1,4,5,6,11

		J32D	J37F	J35P	J38Q
CABLE ASM-CHASSIS GND EXT (BLK)	16Z 16L 16A	133566-12-013	133567-12-045	133566-12-031	133567-12-013
CHASSIS BATTERY DISCONNECT RETURN (PUR)	16Z 16L 16A	141416-12-045	141416-12-046	141415-12-035	141416-12-049
CABLE ASM-CHASSIS BATTERY DISCONNECT SUPPLY (RED)	16Z 16L 16A	141416-32-041	141416-32-015	141415-32-011	141416-32-046
CABLE ASM-COACH BATTERY (YEL)		141416-52-020	141416-52-028	141416-52-017	141416-52-015
CABLE ASM-COACH BATTERY GND (BLK)		133567-12-008	133567-12-028	133567-12-006	133567-12-038
CABLE ASM-STARTER (RED)		141416-32-010	141416-32-044	141416-32-033	141416-32-010
CABLE ASM-GENERATOR (GRN)	321 52P	141415-42-073	141415-42-073	141415-42-079	141415-42-073
WIRE ASM-INVERTER	401	N/A	N/A	154845-02-012	N/A
LEVELING SYSTEM POWER CABLE (BLU)	60M	141415-29-031	141415-29-072	141415-29-058	141415-29-071
LEVELING SYSTEM GND CABLE (BLK)	60M	133566-11-008	133566-11-008	133566-11-008	133566-11-008
CABLE ASM (ORG) FROM COACH BATTERY TO INVERTER FUSE		175207-62-006	175207-62-006		175207-62-012
CABLE ASM (ORG) FROM INVERTER FUSE TO INVERTER BATT DISCONNECT		175207-62-024	175207-62-028		175207-62-012
CABLE ASM (ORG) FROM BATTERY DISCONNECT TO POSITIVE POST ON INVERTER		175207-62-008	175207-62-008		175207-62-008
CABLE ASM (BLK) FROM COACH BATTERY TO INVERTER NEGATIVE TERMINAL		175211-01-027	175211-01-030		175211-01-023
CABLE ASM-TEMPERATURE					175385-03-000
CABLE ASM (YEL) JUMPER BETWEEN POSITIVE POSTS ON COACH BATTERY		141417-52-004 141417-51-002 (2) 15L	141417-52-004 141417-51-002 (2) 15L		141417-52-004 141417-51-002 (2)
CABLE ASM (BLK) JUMPER BETWEEN NEGATIVE POSTS ON COACH BATTERY		133568-12-004 133568-11-002 (2) 15L	133568-12-004 133568-11-002 (2) 15L		133568-12-004 133568-11-002 (2)
CABLE ASM-CHASSIS BATTERY FUSE (RED)		141415-32-003	141415-32-003	141415-32-003	141415-32-005
CABLE ASM-COACH BATTERY FUSE (YEL)		141416-52-003	141416-52-003	141416-52-006	141416-52-003

- RESIDENTIAL REFRIGERATOR PKG
- FORD 26,000#-22.5 AL WHL
- GEN-5.5KW ONAN-GAS-MARQ GOLD
- GENERATOR PREP KIT
- HYDRAULIC LEVEL JACKS-AUTO
- INVERTER-DC/AC, 1000 WATT
- FORD 24,000#-22.5 ALUM WHEEL
- FORD 22,000#-22.5 AL WHL
- CODES/STANDARDS-CSA/CMVSS
- CODES/STANDARDS USA

WINNEBAGO COPYRIGHT 2014 WINNEBAGO INDUSTRIES, INC.

UNSPECIFIED TOLERANCES ARE:
 WHOLE DIM (X) : 3
 ONE-PLACE (X.X) : 1.5
 TWO-PLACE (X.XX) : 0.50
 ANGLE : 1°

THIRD ANGLE PROJECTION

DO NOT SCALE DRAWING REFER TO ES0018 FOR FASTENER TIGHTENING GUIDELINES

TITLE: **BATTERY INSTL,FD**

SHEET 1 OF 11 PART NO. 191432 REV

REF: 1 27-Feb-2015

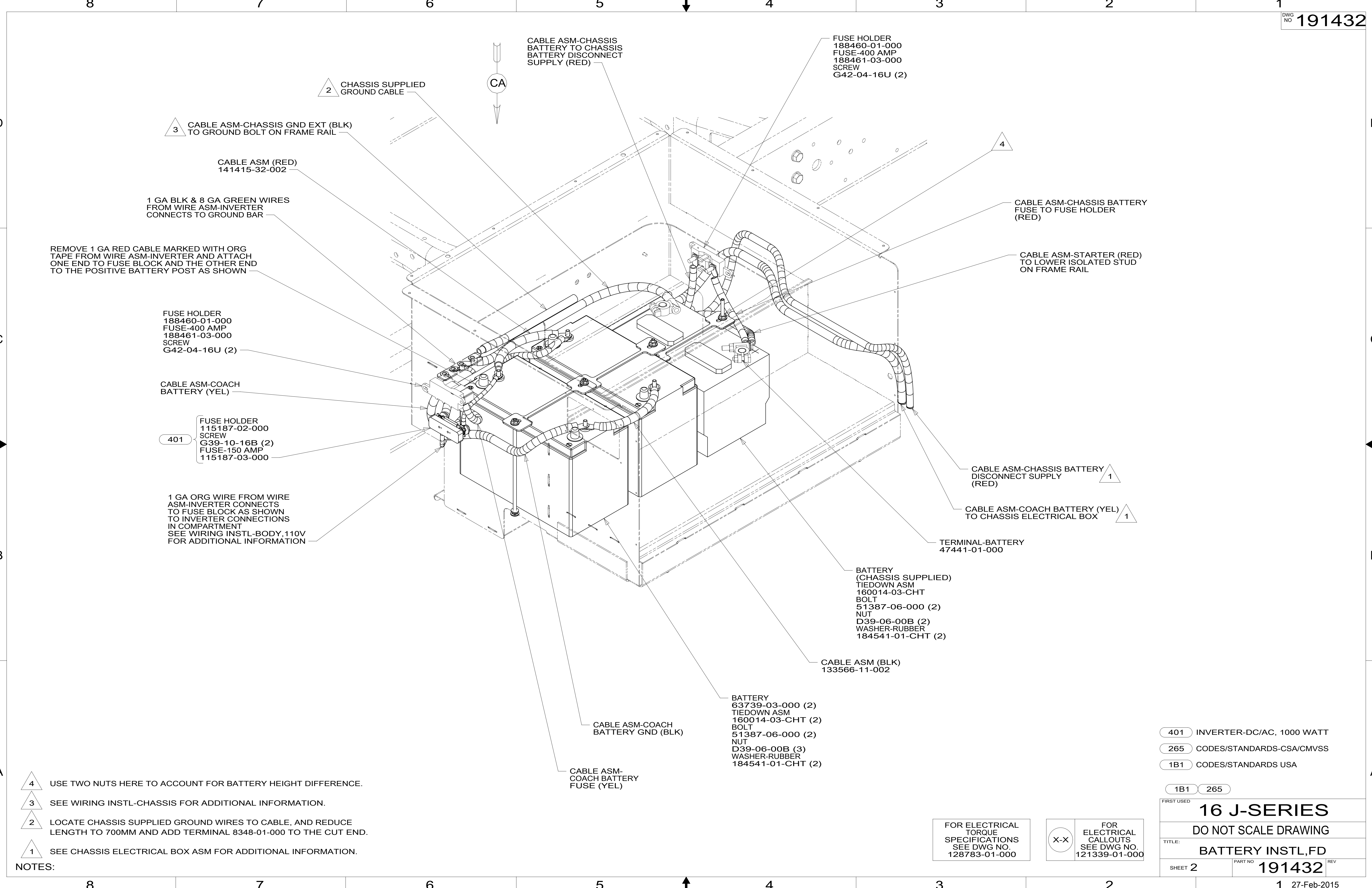
CABLE ASM-TEMPERATURE IS PART OF WIRE ASM-CHASSIS.

BATTERY CABLES MUST BE INSTALLED TO STARTER MOTOR BEFORE ENGINE WIRING HARNESS AND ROUTED IN SUCH A MANNER AS TO PREVENT ANY POSSIBLE DEGRADATION FROM THE EXHUAST SYSTEM.

FOR ELECTRICAL TORQUE SPECIFICATIONS SEE DWG NO. 128783-01-000

FOR ELECTRICAL CALLOUTS SEE DWG NO. 121339-01-000

191432



- NOTES:
- 4** USE TWO NUTS HERE TO ACCOUNT FOR BATTERY HEIGHT DIFFERENCE.
 - 3** SEE WIRING INSTL-CHASSIS FOR ADDITIONAL INFORMATION.
 - 2** LOCATE CHASSIS SUPPLIED GROUND WIRES TO CABLE, AND REDUCE LENGTH TO 700MM AND ADD TERMINAL 8348-01-000 TO THE CUT END.
 - 1** SEE CHASSIS ELECTRICAL BOX ASM FOR ADDITIONAL INFORMATION.

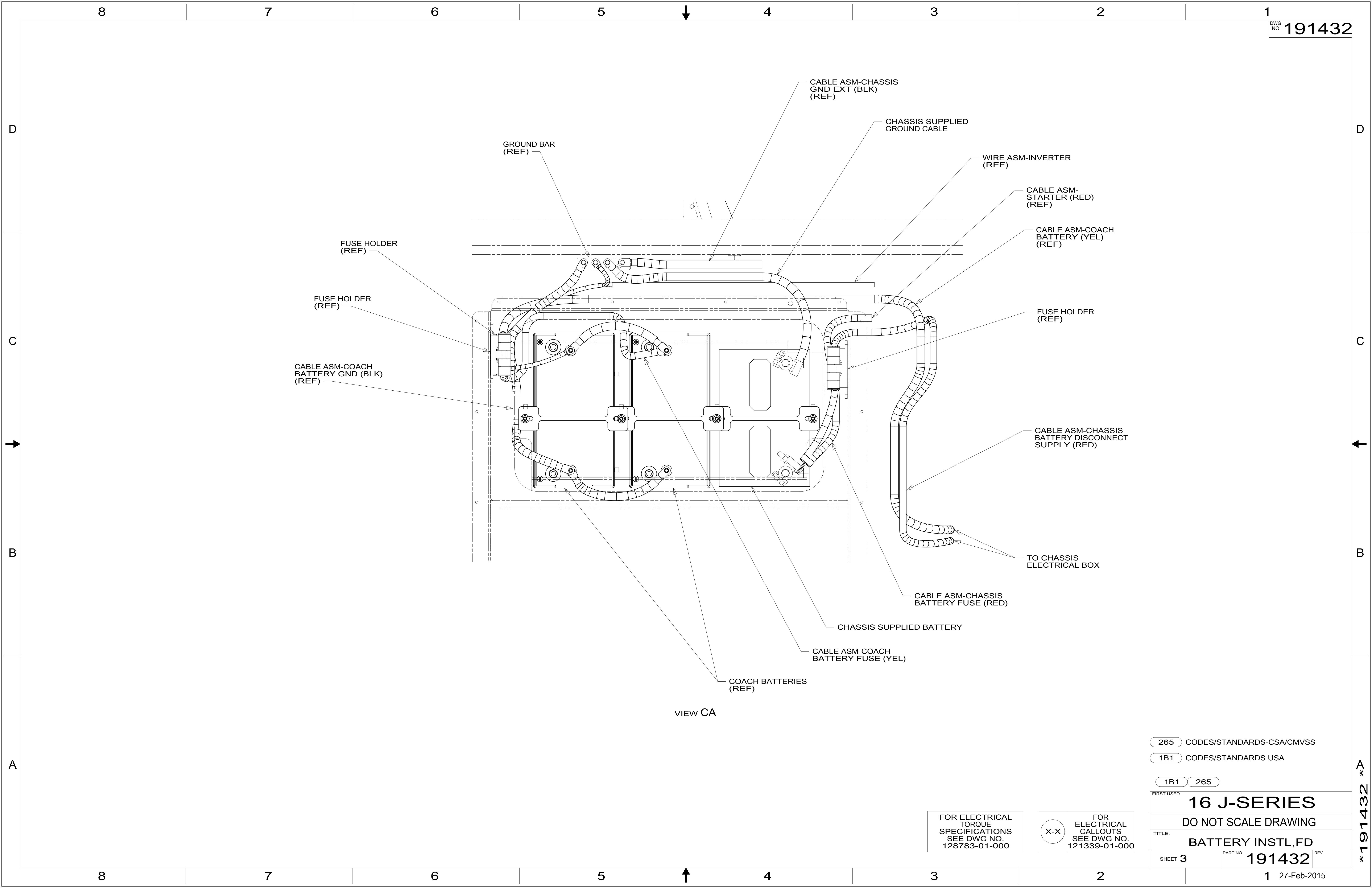
FOR ELECTRICAL TORQUE SPECIFICATIONS SEE DWG NO. 128783-01-000

FOR ELECTRICAL CALLOUTS SEE DWG NO. 121339-01-000

- 401** INVERTER-DC/AC, 1000 WATT
- 265** CODES/STANDARDS-CSA/CMVSS
- 1B1** CODES/STANDARDS USA

FIRST USED	
16 J-SERIES	
DO NOT SCALE DRAWING	
TITLE: BATTERY INSTL,FD	
SHEET 2	PART NO 191432 REV
1 27-Feb-2015	

*191432 *A



VIEW CA

265 CODES/STANDARDS-CSA/CMVSS

1B1 CODES/STANDARDS USA

1B1 265

FIRST USED **16 J-SERIES**

DO NOT SCALE DRAWING

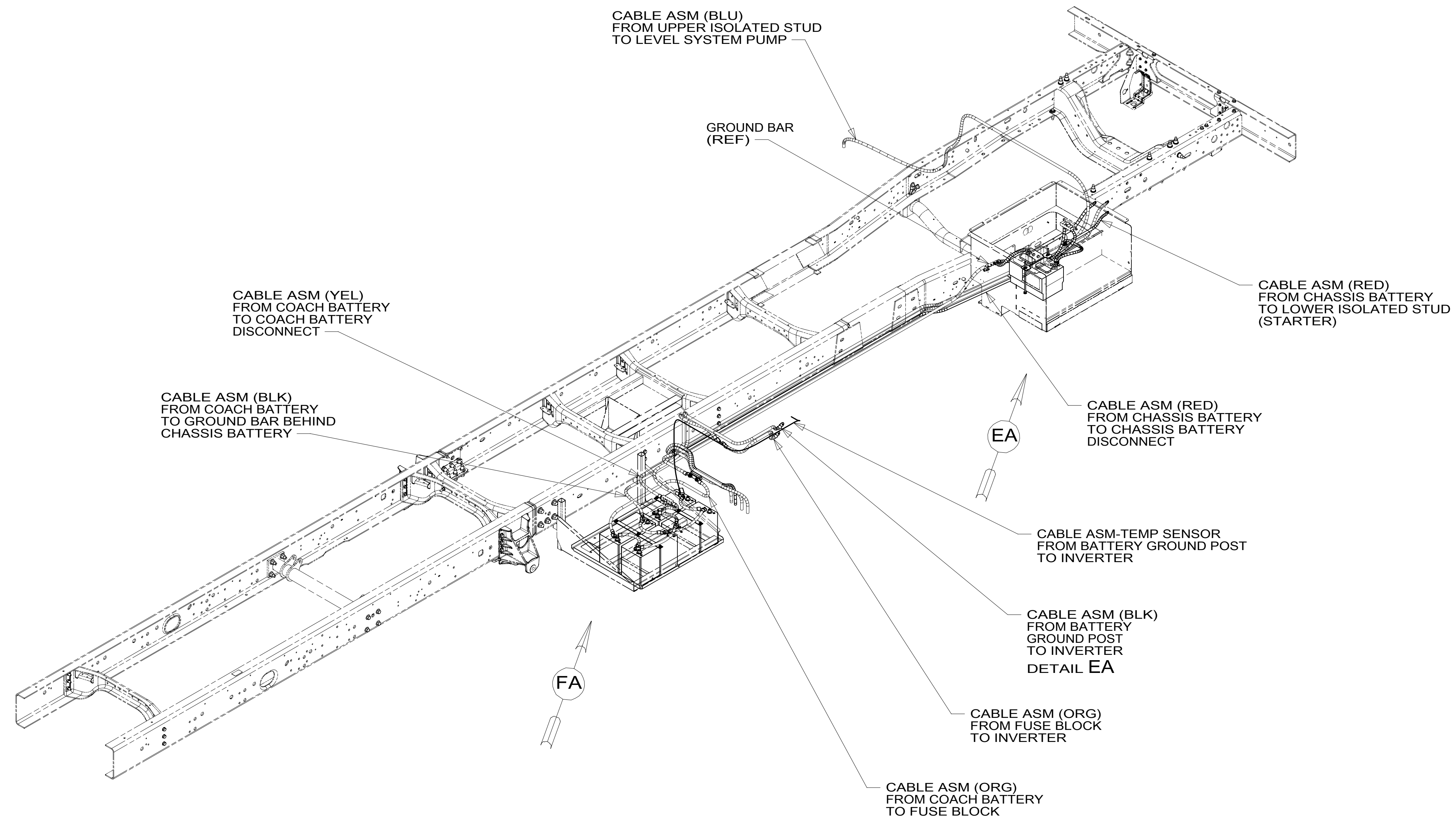
TITLE: **BATTERY INSTL,FD**

SHEET 3 PART NO **191432** REV

FOR ELECTRICAL TORQUE SPECIFICATIONS SEE DWG NO. 128783-01-000

FOR ELECTRICAL CALLOUTS SEE DWG NO. 121339-01-000

*191432 *A



265 CODES/STANDARDS-CSA/CMVSS

1B1 CODES/STANDARDS USA

1B1 265

FIRST USED
16 J-SERIES

DO NOT SCALE DRAWING

TITLE:
BATTERY INSTL,FD

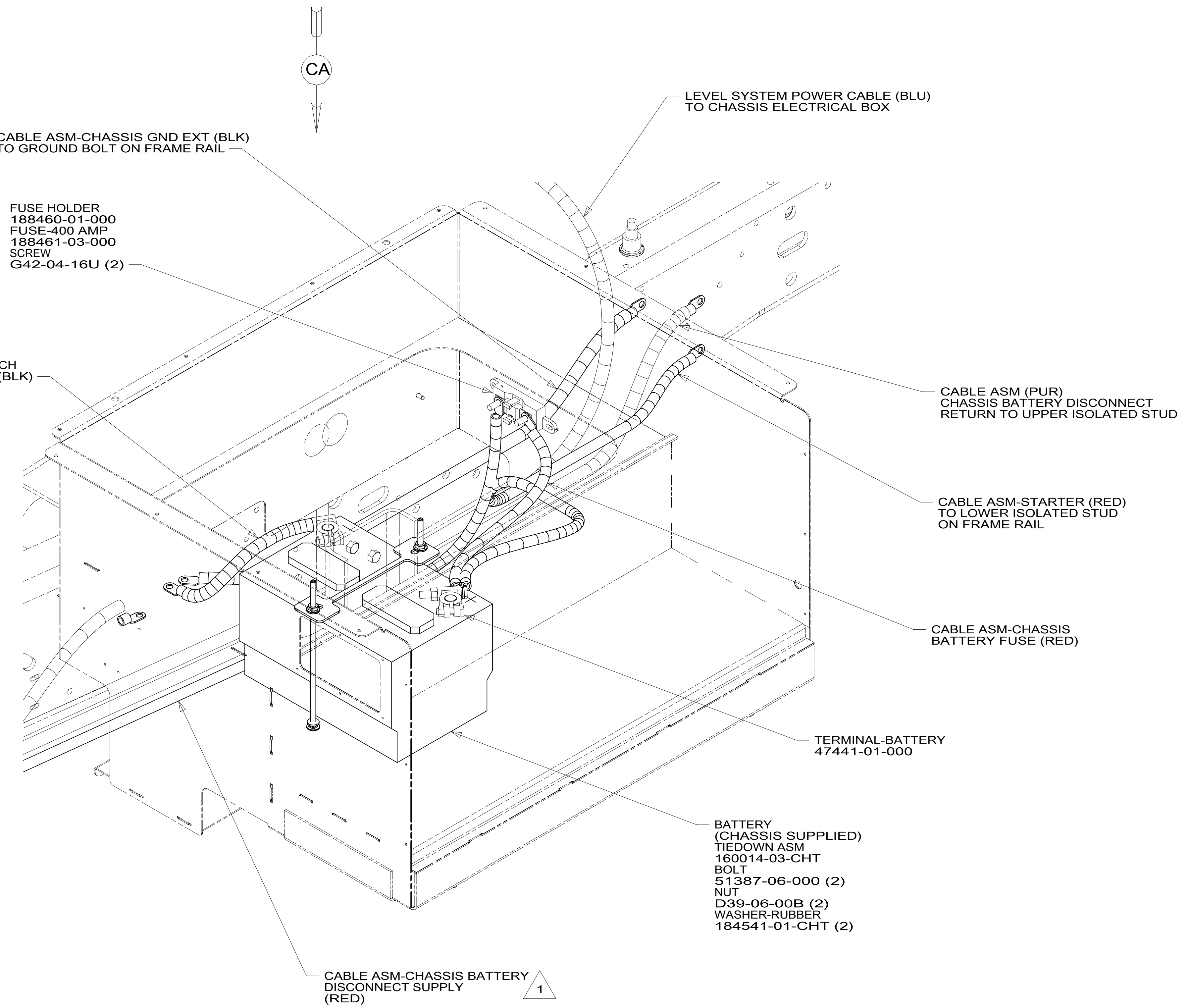
SHEET 4 PART NO **191432** REV

FOR ELECTRICAL
TORQUE
SPECIFICATIONS
SEE DWG NO.
128783-01-000

FOR
ELECTRICAL
CALLOUTS
SEE DWG NO.
121339-01-000

X-X

191432



VIEW EA

- 2 SEE WIRING INSTL-CHASSIS FOR ADDITIONAL INFORMATION.
- 1 SEE CHASSIS ELECTRICAL BOX ASM FOR ADDITIONAL INFORMATION.

NOTES:

FOR ELECTRICAL TORQUE SPECIFICATIONS SEE DWG NO. 128783-01-000

FOR ELECTRICAL CALLOUTS SEE DWG NO. 121339-01-000

- 401 INVERTER-DC/AC, 1000 WATT
- 265 CODES/STANDARDS-CSA/CMVSS
- 1B1 CODES/STANDARDS USA

1B1 265

FIRST USED	
16 J-SERIES	
DO NOT SCALE DRAWING	
TITLE: BATTERY INSTL,FD	
SHEET 5	PART NO 191432 REV
1 27-Feb-2015	

*191432 *A

8

7

6

5

4

3

2

1

D

D

C

C

B

B

A

A

CABLE ASM (YEL)

FUSE HOLDER
188460-01-000
FUSE-400 AMP
188461-03-000
TIE-WIRE
008343-02-000 (2)

CABLE ASM-
COACH BATTERY
FUSE (YEL)

282 CONNECT SOLAR PANEL
GROUND HERE
CIRCUIT ZZZ
29W TAPE CIRCUIT ZZZ
BACK TO HARNESS

TO GROUND STUD
BEHIND CHASSIS
BATTERY

CABLE ASM-
TEMPERATURE,BATTERY

CABLE ASM (BLK)
TO INVERTER GROUND

HOLDER-FUSE
115187-02-000
FUSE-400 AMP
115187-05-000
SCREW
G36-10-12U (2)

CABLE ASM (ORG)
TO INVERTER FUSE

BATTERY-12V
174923-01-000 (4)
BOLT
51387-06-000 (6)
NUT-HEX
D39-05-00U (6)
WASHER-RUBBER
184541-01-CHT (6)
STRAP-BATTERY
TIE DOWN
138914-01-CHT (4)

CABLE ASM (BLK)
COACH BATTERY JUMPER

CABLE ASM (YEL)
COACH BATTERY JUMPER

TRAY-BATTERY
176574-03-CHT
NUT
D39-06-00U
WASHER
E13-17-00U

VIEW FA

265 CODES/STANDARDS-CSA/CMVSS

1B1 CODES/STANDARDS USA

1B1 265

FIRST USED
16 J-SERIES

DO NOT SCALE DRAWING

TITLE:
BATTERY INSTL,FD

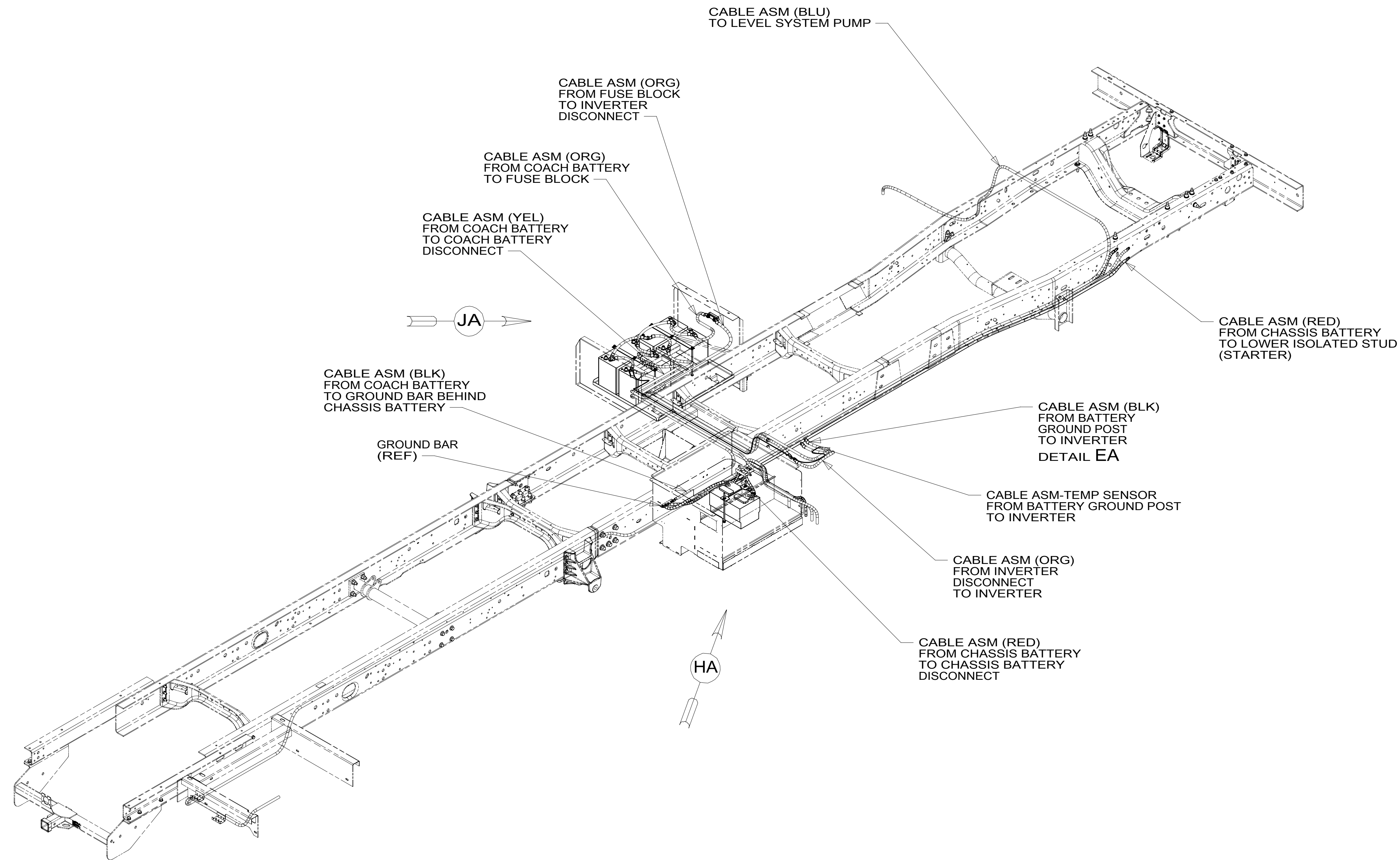
SHEET 6 PART NO **191432** REV

1 27-Feb-2015

FOR ELECTRICAL
TORQUE
SPECIFICATIONS
SEE DWG NO.
128783-01-000

X-X FOR
ELECTRICAL
CALLOUTS
SEE DWG NO.
121339-01-000

191432



265 CODES/STANDARDS-CSA/CMVSS

1B1 CODES/STANDARDS USA

1B1 265

FIRST USED
16 J-SERIES

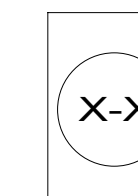
DO NOT SCALE DRAWING

TITLE:
BATTERY INSTL,FD

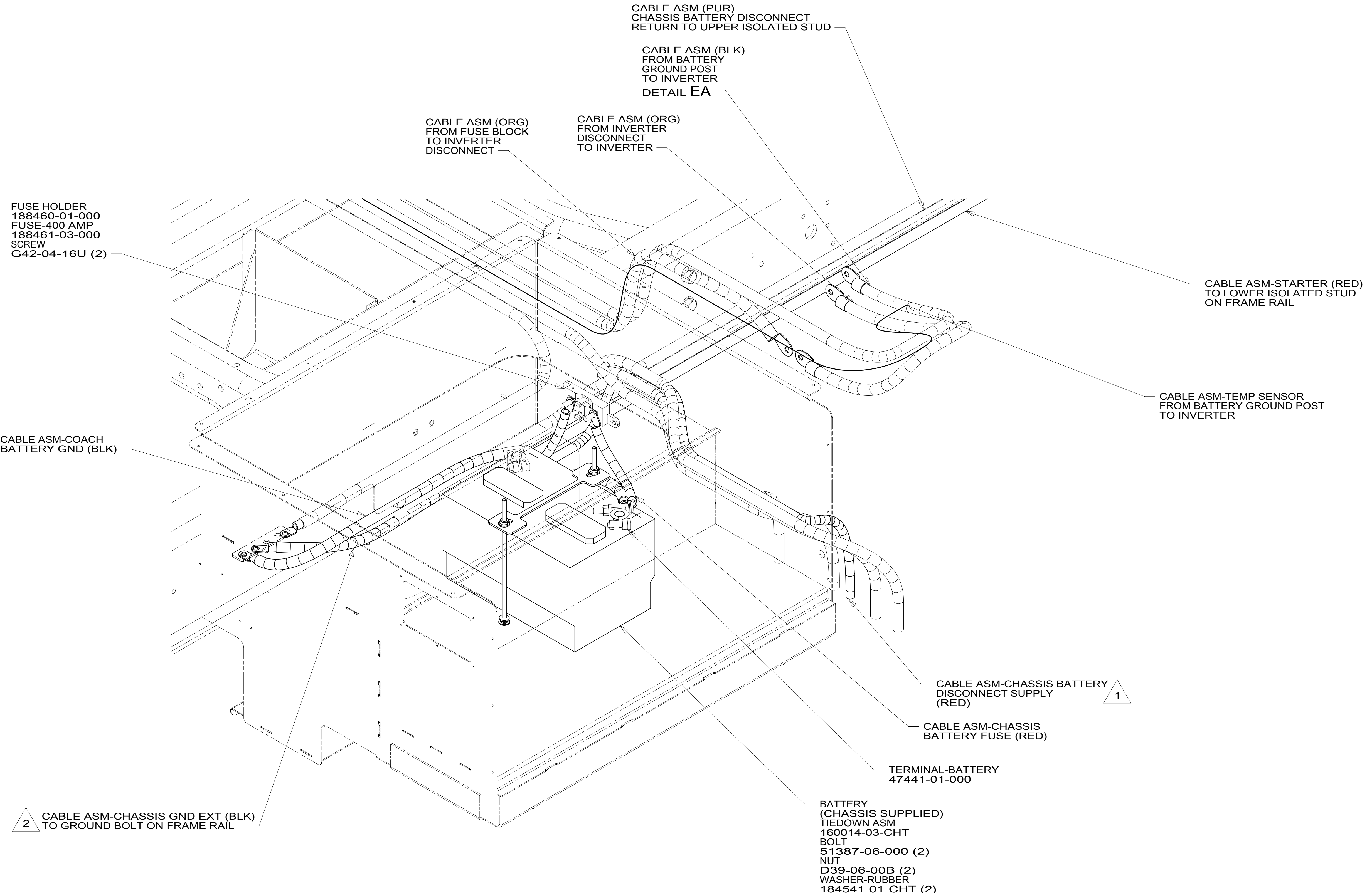
SHEET 7 PART NO **191432** REV

FOR ELECTRICAL TORQUE SPECIFICATIONS SEE DWG NO. 128783-01-000

FOR ELECTRICAL CALLOUTS SEE DWG NO. 121339-01-000



191432



FUSE HOLDER
188460-01-000
FUSE-400 AMP
188461-03-000
SCREW
G42-04-16U (2)

CABLE ASM-COACH
BATTERY GND (BLK)

2 CABLE ASM-CHASSIS GND EXT (BLK)
TO GROUND BOLT ON FRAME RAIL

CABLE ASM (ORG)
FROM FUSE BLOCK
TO INVERTER
DISCONNECT

CABLE ASM (ORG)
FROM INVERTER
DISCONNECT
TO INVERTER

CABLE ASM (PUR)
CHASSIS BATTERY DISCONNECT
RETURN TO UPPER ISOLATED STUD

CABLE ASM (BLK)
FROM BATTERY
GROUND POST
TO INVERTER
DETAIL EA

CABLE ASM-STARTER (RED)
TO LOWER ISOLATED STUD
ON FRAME RAIL

CABLE ASM-TEMP SENSOR
FROM BATTERY GROUND POST
TO INVERTER

CABLE ASM-CHASSIS BATTERY
DISCONNECT SUPPLY (RED) 1

CABLE ASM-CHASSIS
BATTERY FUSE (RED)

TERMINAL-BATTERY
47441-01-000

BATTERY
(CHASSIS SUPPLIED)
TIEDOWN ASM
160014-03-CHT
BOLT
51387-06-000 (2)
NUT
D39-06-00B (2)
WASHER-RUBBER
184541-01-CHT (2)

VIEW HA

- NOTES:
- 2 SEE WIRING INSTL-CHASSIS FOR ADDITIONAL INFORMATION.
 - 1 SEE CHASSIS ELECTRICAL BOX ASM FOR ADDITIONAL INFORMATION.

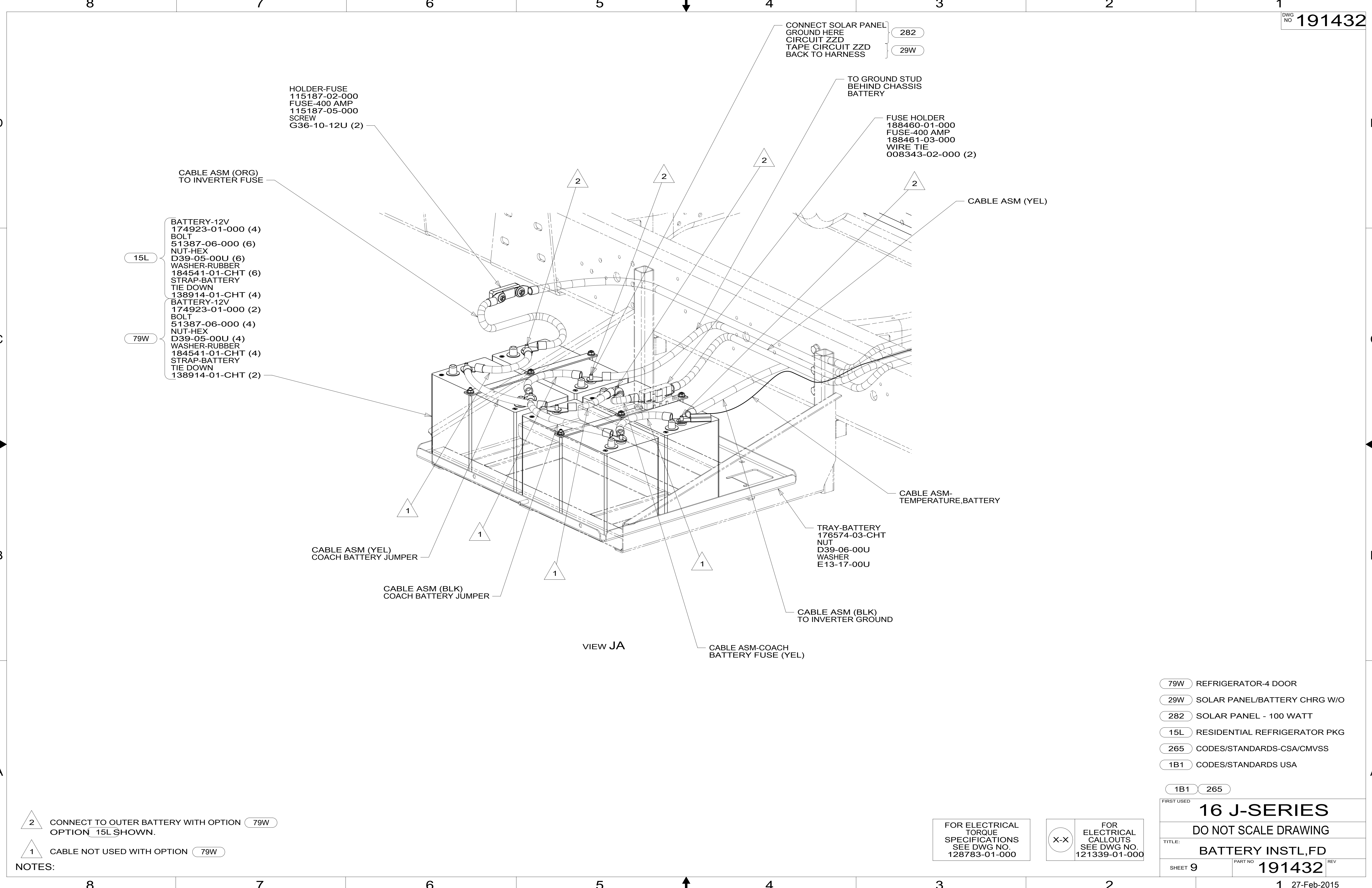
FOR ELECTRICAL
TORQUE
SPECIFICATIONS
SEE DWG NO.
128783-01-000

FOR
ELECTRICAL
CALLOUTS
SEE DWG NO.
121339-01-000

- 401 INVERTER-DC/AC, 1000 WATT
- 265 CODES/STANDARDS-CSA/CMVSS
- 1B1 CODES/STANDARDS USA

1B1 265

FIRST USED	
16 J-SERIES	
DO NOT SCALE DRAWING	
TITLE: BATTERY INSTL,FD	
SHEET 8	PART NO 191432 REV



- 15L BATTERY-12V 174923-01-000 (4)
- BOLT 51387-06-000 (6)
- NUT-HEX D39-05-00U (6)
- WASHER-RUBBER 184541-01-CHT (6)
- STRAP-BATTERY TIE DOWN 138914-01-CHT (4)
- BATTERY-12V 174923-01-000 (2)
- BOLT 51387-06-000 (4)
- NUT-HEX D39-05-00U (4)
- WASHER-RUBBER 184541-01-CHT (4)
- STRAP-BATTERY TIE DOWN 138914-01-CHT (2)

79W

- NOTES:
- 2 CONNECT TO OUTER BATTERY WITH OPTION 79W
OPTION 15L SHOWN.
 - 1 CABLE NOT USED WITH OPTION 79W

- 79W REFRIGERATOR-4 DOOR
- 29W SOLAR PANEL/BATTERY CHRГ W/O
- 282 SOLAR PANEL - 100 WATT
- 15L RESIDENTIAL REFRIGERATOR PKG
- 265 CODES/STANDARDS-CSA/CMVSS
- 1B1 CODES/STANDARDS USA

FIRST USED	
16 J-SERIES	
DO NOT SCALE DRAWING	
TITLE: BATTERY INSTL,FD	
SHEET 9	PART NO 191432 REV

FOR ELECTRICAL TORQUE SPECIFICATIONS SEE DWG NO. 128783-01-000

FOR ELECTRICAL CALLOUTS SEE DWG NO. 121339-01-000

*191432 *A

8

7

6

5

4

3

2

1

D

D

C

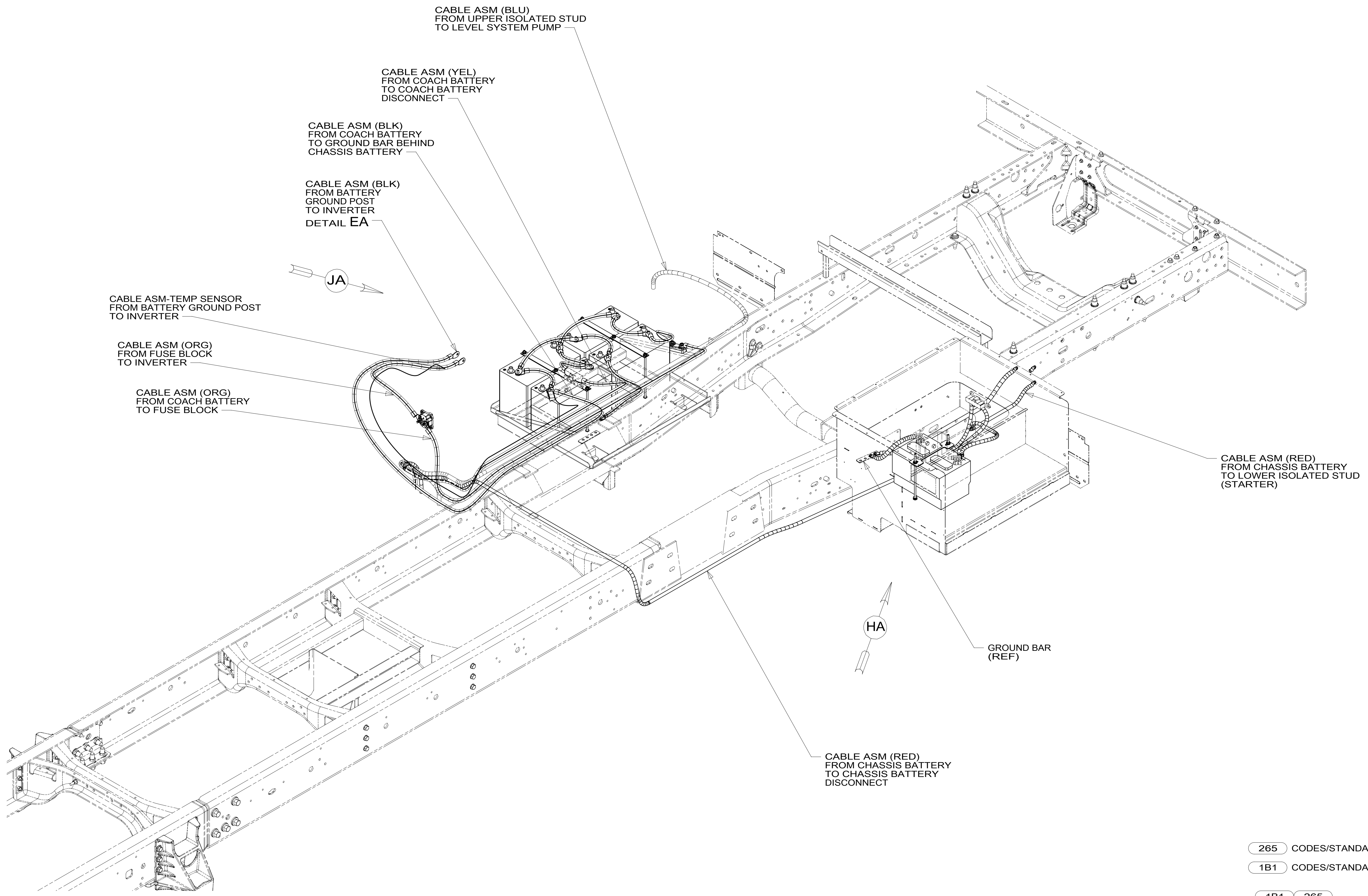
C

B

B

A

A



CABLE ASM (BLU)
FROM UPPER ISOLATED STUD
TO LEVEL SYSTEM PUMP

CABLE ASM (YEL)
FROM COACH BATTERY
TO COACH BATTERY
DISCONNECT

CABLE ASM (BLK)
FROM COACH BATTERY
TO GROUND BAR BEHIND
CHASSIS BATTERY

CABLE ASM (BLK)
FROM BATTERY
GROUND POST
TO INVERTER
DETAIL EA

CABLE ASM-TEMP SENSOR
FROM BATTERY GROUND POST
TO INVERTER

CABLE ASM (ORG)
FROM FUSE BLOCK
TO INVERTER

CABLE ASM (ORG)
FROM COACH BATTERY
TO FUSE BLOCK

CABLE ASM (RED)
FROM CHASSIS BATTERY
TO LOWER ISOLATED STUD
(STARTER)

GROUND BAR
(REF)

CABLE ASM (RED)
FROM CHASSIS BATTERY
TO CHASSIS BATTERY
DISCONNECT

265 CODES/STANDARDS-CSA/CMVSS

1B1 CODES/STANDARDS USA

1B1 265

FIRST USED
16 J-SERIES

DO NOT SCALE DRAWING

TITLE:
BATTERY INSTL,FD

SHEET 10 PART NO **191432** REV

FOR ELECTRICAL
TORQUE
SPECIFICATIONS
SEE DWG NO.
128783-01-000

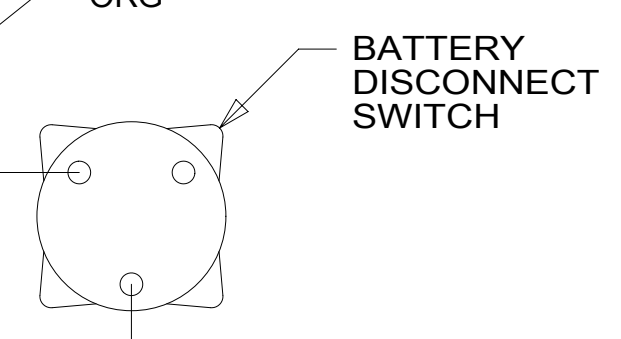
FOR
ELECTRICAL
CALLOUTS
SEE DWG NO.
121339-01-000

191432

GENERATOR

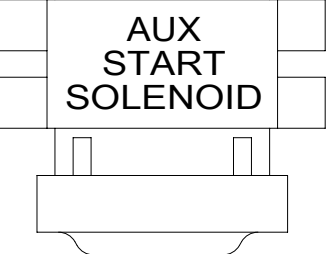
INVERTER

LEVELING PUMP



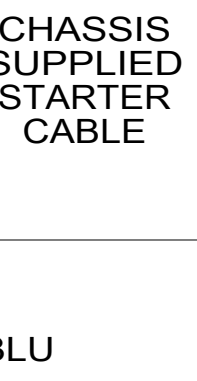
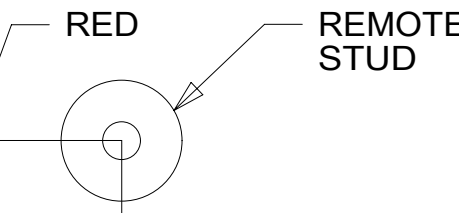
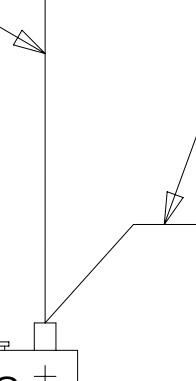
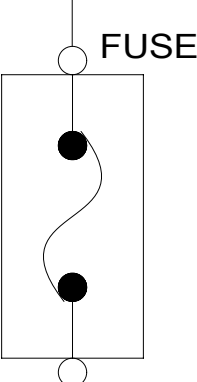
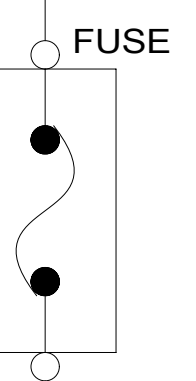
HOUSE BATTERY BANK

CHASSIS BATTERY BANK

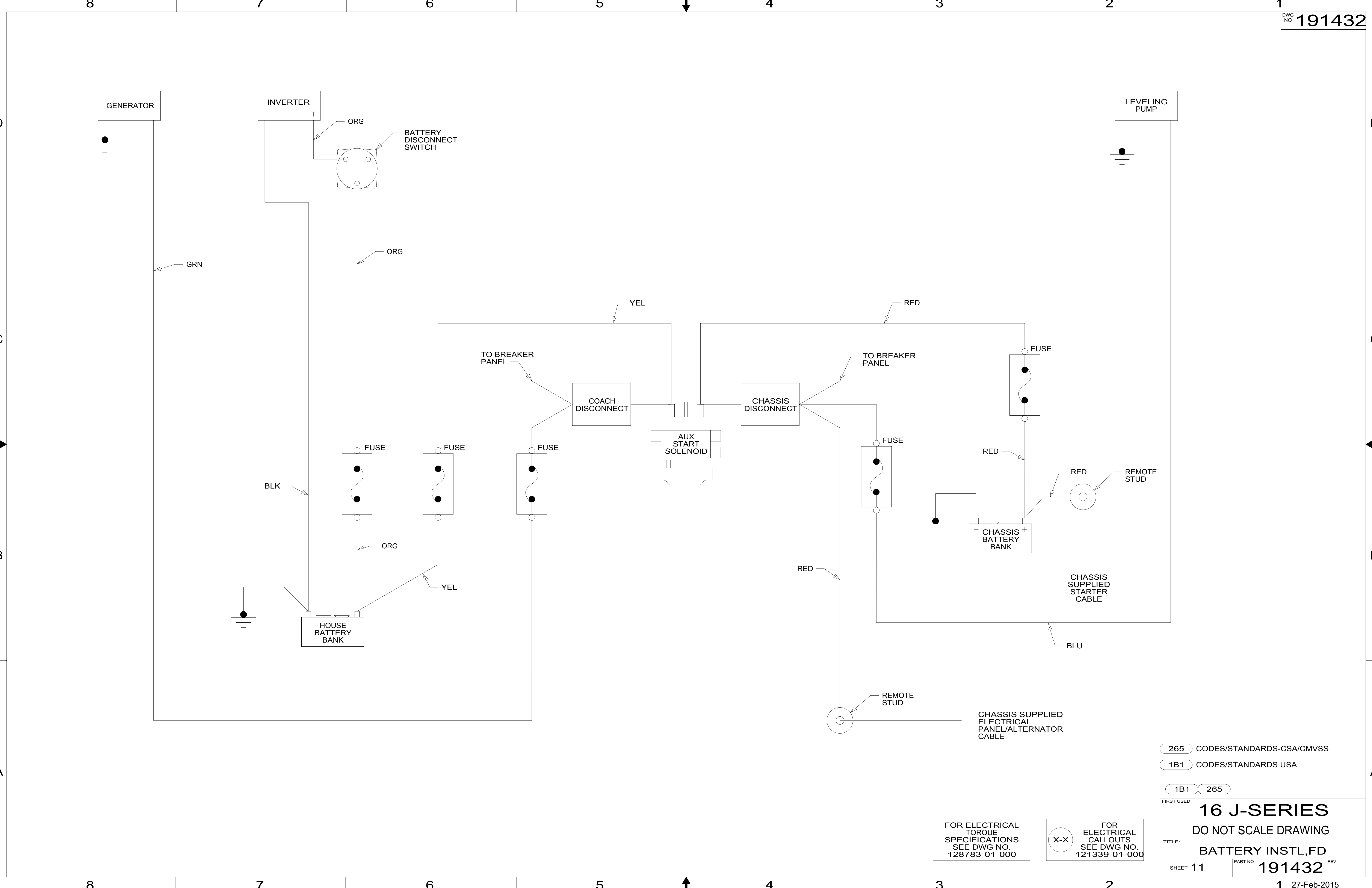


COACH DISCONNECT

CHASSIS DISCONNECT



CHASSIS SUPPLIED ELECTRICAL PANEL/ALTERNATOR CABLE



265 CODES/STANDARDS-CSA/CMVSS

1B1 CODES/STANDARDS USA

1B1 265

FIRST USED 16 J-SERIES

DO NOT SCALE DRAWING

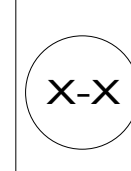
TITLE: BATTERY INSTL,FD

SHEET 11 PART NO 191432 REV

1 27-Feb-2015

FOR ELECTRICAL TORQUE SPECIFICATIONS SEE DWG NO. 128783-01-000

FOR ELECTRICAL CALLOUTS SEE DWG NO. 121339-01-000



*191432 *A