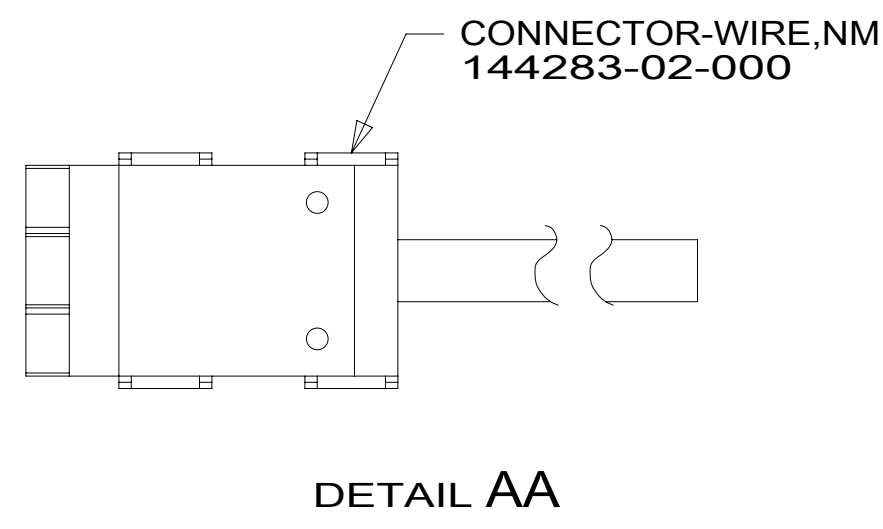


DRAWING NO.	MODEL	SHEET
191238-01	423T	1,2,3
191238-02	423A	1,4,5

RELEASE	REV/DATE	DWG NO	191238
REV ZONE	REVISION RECORD	DATE	DFTR-ORIG



		423T	423A	
RED	1B1	136135-07-040	136135-07-034	38E
	265	136136-07-040	136136-07-034	38E
YEL	1B1	136131-05-017	136131-05-018	2
	265	136134-05-017	136134-05-018	2
BLK	1B1	136135-06-010	136135-06-018	
	265	136136-06-010	136136-06-018	
BRN	1B1	136131-03-047	136131-03-039	
	265	136134-03-047	136134-03-039	
BLU	1B1	136131-02-065	136131-02-128	
	265	136134-02-065	136134-02-128	
MAIN	1B1	136137-01-040	136137-01-074	
	265	136138-01-040	136138-01-074	
BLK-2	1B1	136135-22-040	136135-22-006	
	265	136136-22-040	136136-22-006	
WHT	1B1	136135-09-027	136135-09-025	
	265	136136-09-027	136136-09-025	
THROW IN WIRE #1	1B1	136131-03-040	136131-05-010	2
	265	136134-03-040	136134-05-010	2
THROW IN WIRE #2	1B1	136131-02-024		
	265	136134-02-024		
THROW IN WIRE #3	1B1	136131-02-038	136131-02-028	
	265	136134-02-038	136134-02-028	
THROW IN WIRE #4	1B1	136131-02-045		
	265	136134-02-045		
CONVERTER FEED POS		174023-01-000 (700 MM)	174023-01-000 (1400 MM)	
CONVERTER FEED NEG		174023-02-000 (700 MM)	174023-02-000 (1400 MM)	

- 38E CONVENIENCE PACKAGE
  - 265 CODES/STANDARDS-CSA/CMVSS
  - 1B1 CODES/STANDARDS USA
- 1B1 265

**WINNEBAGO** COPYRIGHT 2014 WINNEBAGO INDUSTRIES, INC.

ALL DIMENSIONS ARE IN MILLIMETERS

16 400-SERIES

UNSPECIFIED TOLERANCES ARE:  
 WHOLE DIM (X) : 3  
 ONE-PLACE (X.X) : 1.5  
 TWO-PLACE (X.XX) : 0.50  
 ANGLE : 1°

THIRD ANGLE PROJECTION

DO NOT SCALE DRAWING REFER TO ES0018 FOR FASTENER TIGHTENING GUIDELINES

TITLE: **LOAD CENTER/ATS ASM**

SHEET 1 OF 5 PART NO. **191238** REV

REF: 1 06-Nov-2015

2 FOR CONNECTOR INSTALLATION, SEE DETAIL AA.

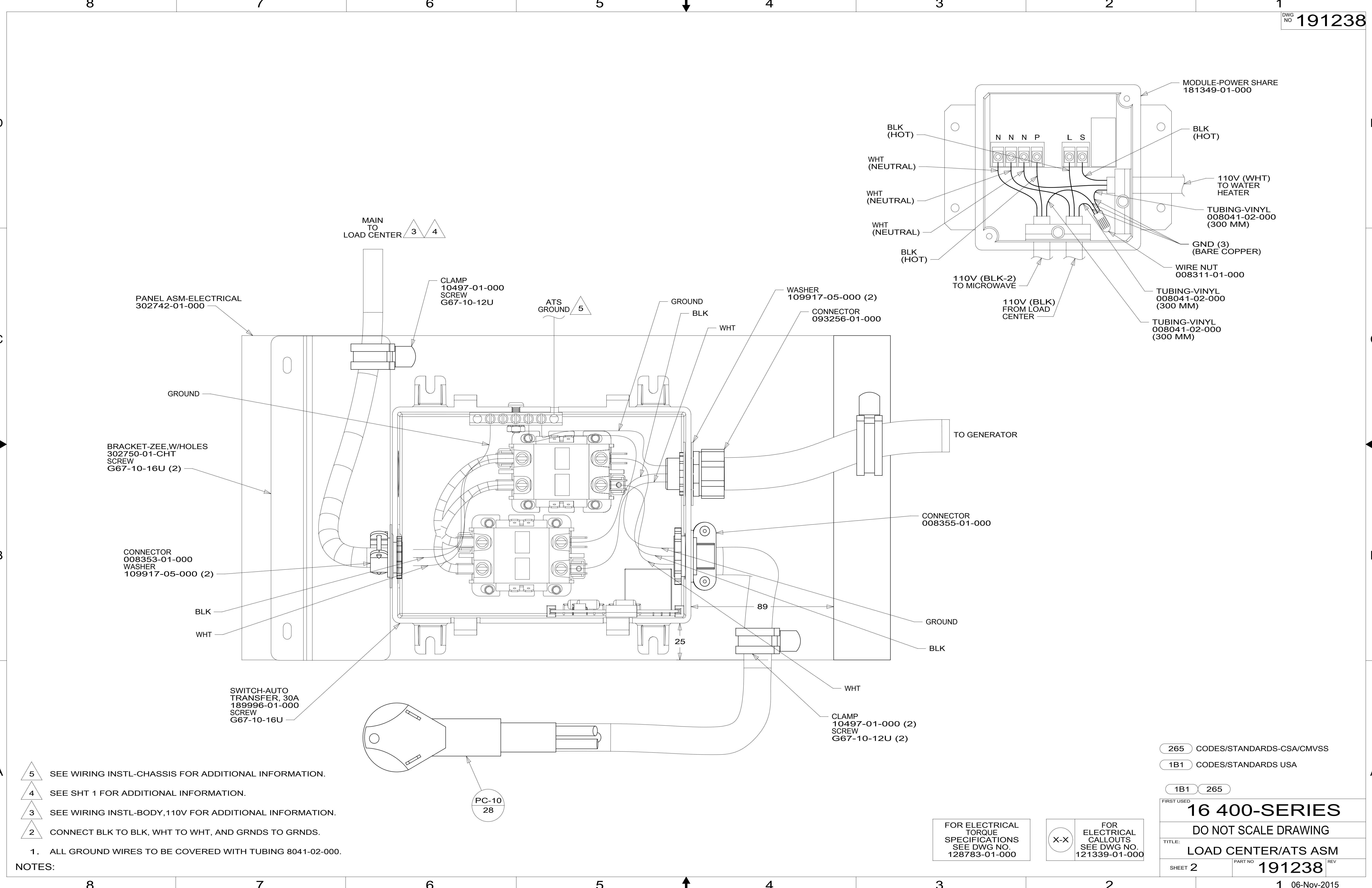
1. ALL GROUND WIRES TO BE COVERED WITH TUBING 8041-02-000.

NOTES:

FOR ELECTRICAL TORQUE SPECIFICATIONS SEE DWG NO. 128783-01-000

FOR ELECTRICAL CALLOUTS SEE DWG NO. 121339-01-000

\*191238 \*A



- 5 SEE WIRING INSTL-CHASSIS FOR ADDITIONAL INFORMATION.
- 4 SEE SHT 1 FOR ADDITIONAL INFORMATION.
- 3 SEE WIRING INSTL-BODY, 110V FOR ADDITIONAL INFORMATION.
- 2 CONNECT BLK TO BLK, WHT TO WHT, AND GRNDS TO GRNDS.

NOTES:  
1. ALL GROUND WIRES TO BE COVERED WITH TUBING 8041-02-000.

265	CODES/STANDARDS-CSA/CMVSS
1B1	CODES/STANDARDS USA
1B1	265

FIRST USED

## 16 400-SERIES

**DO NOT SCALE DRAWING**

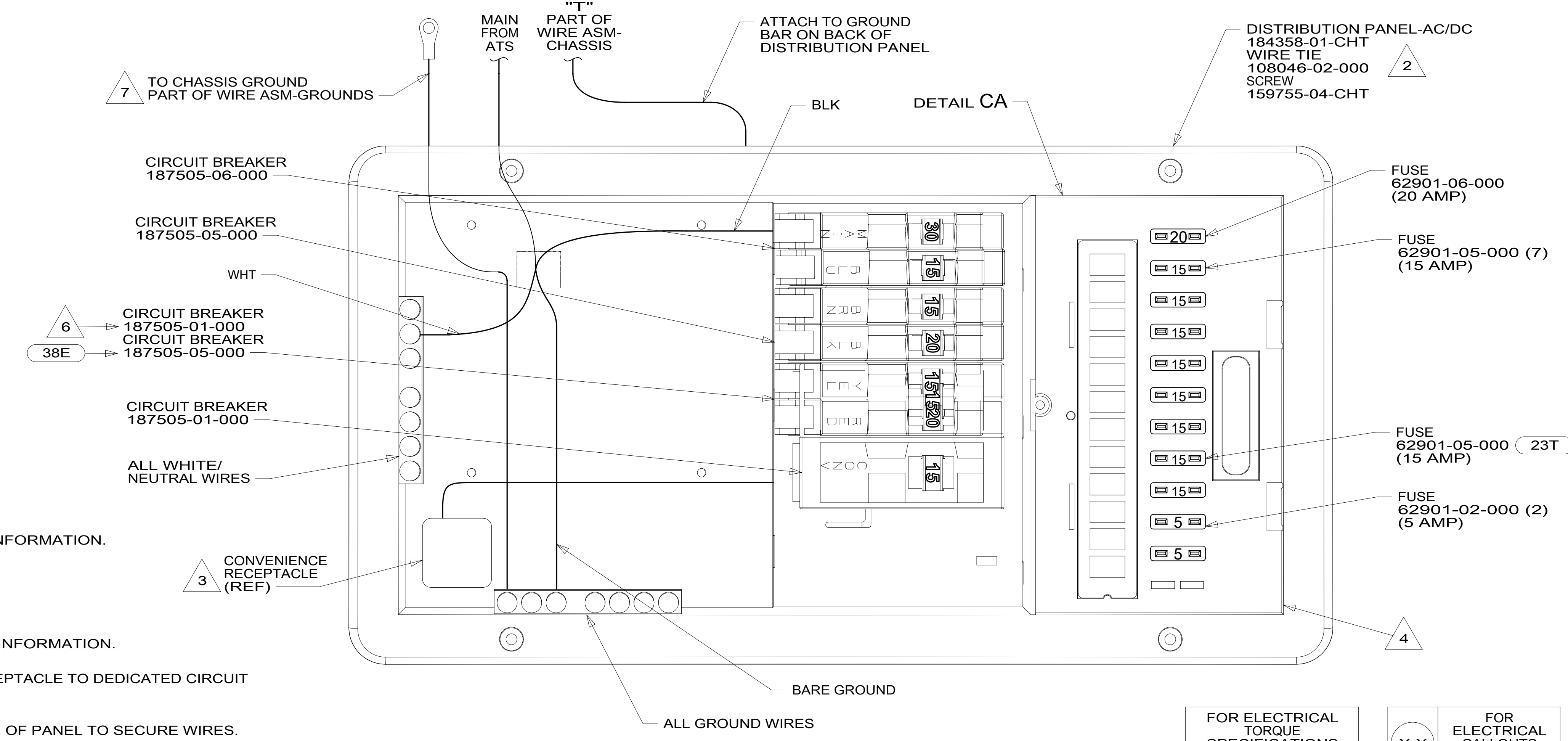
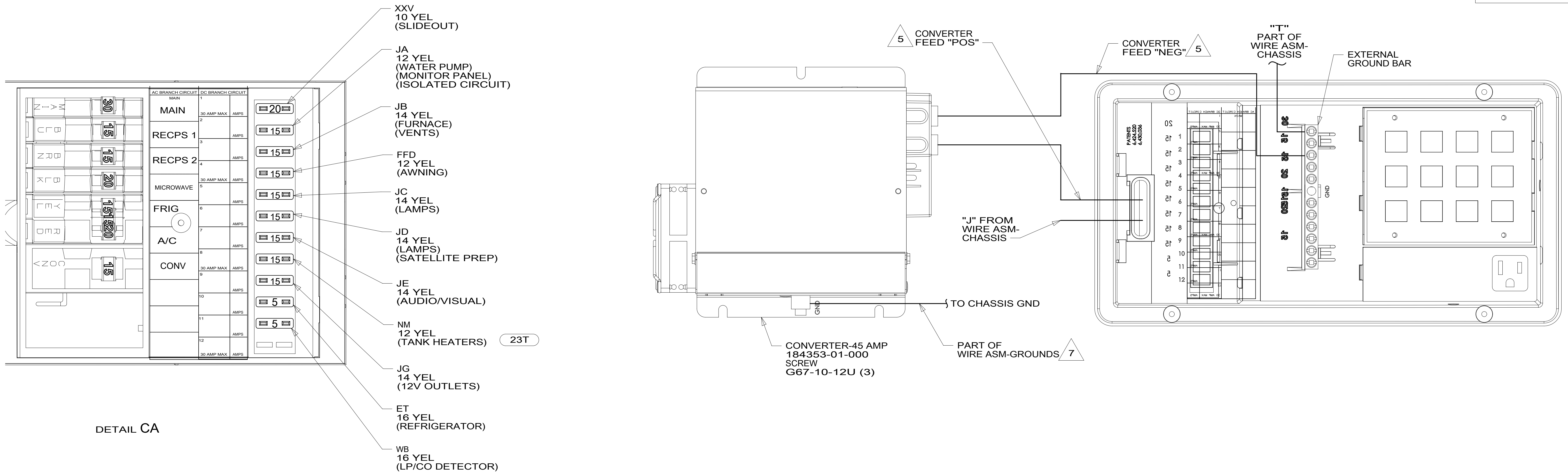
TITLE: **LOAD CENTER/ATS ASM**

SHEET 2 PART NO **191238** REV

FOR ELECTRICAL TORQUE SPECIFICATIONS SEE DWG NO. 128783-01-000

FOR ELECTRICAL CALLOUTS SEE DWG NO. 121339-01-000

\*191238 \*A



- 7 SEE WIRING INSTL-CHASSIS FOR ADDITIONAL INFORMATION.
- 6 WITHOUT (38E)
- 5 SEE SHT 1 FOR ADDITIONAL INFORMATION.
- 4 SEE WIRING INSTL-BODY, 12V FOR ADDITIONAL INFORMATION.
- 3 CONNECT BLACK WIRE FROM CONVENIENCE RECEPTACLE TO DEDICATED CIRCUIT BREAKER.
- 2 ATTACH TO UNUSED SCREW HOLE ON BACK SIDE OF PANEL TO SECURE WIRES.

1. ALL GROUND WIRES TO BE COVERED WITH TUBING 8041-02-000.

NOTES:

- 38E CONVENIENCE PACKAGE
- 23T DRAINAGE SYSTEM-HEATED
- 265 CODES/STANDARDS-CSA/CMVSS
- 1B1 CODES/STANDARDS USA

1B1 265

FIRST USED

**16 400-SERIES**

DO NOT SCALE DRAWING

TITLE: **LOAD CENTER/ATS ASM**

SHEET 3 PART NO **191238** REV

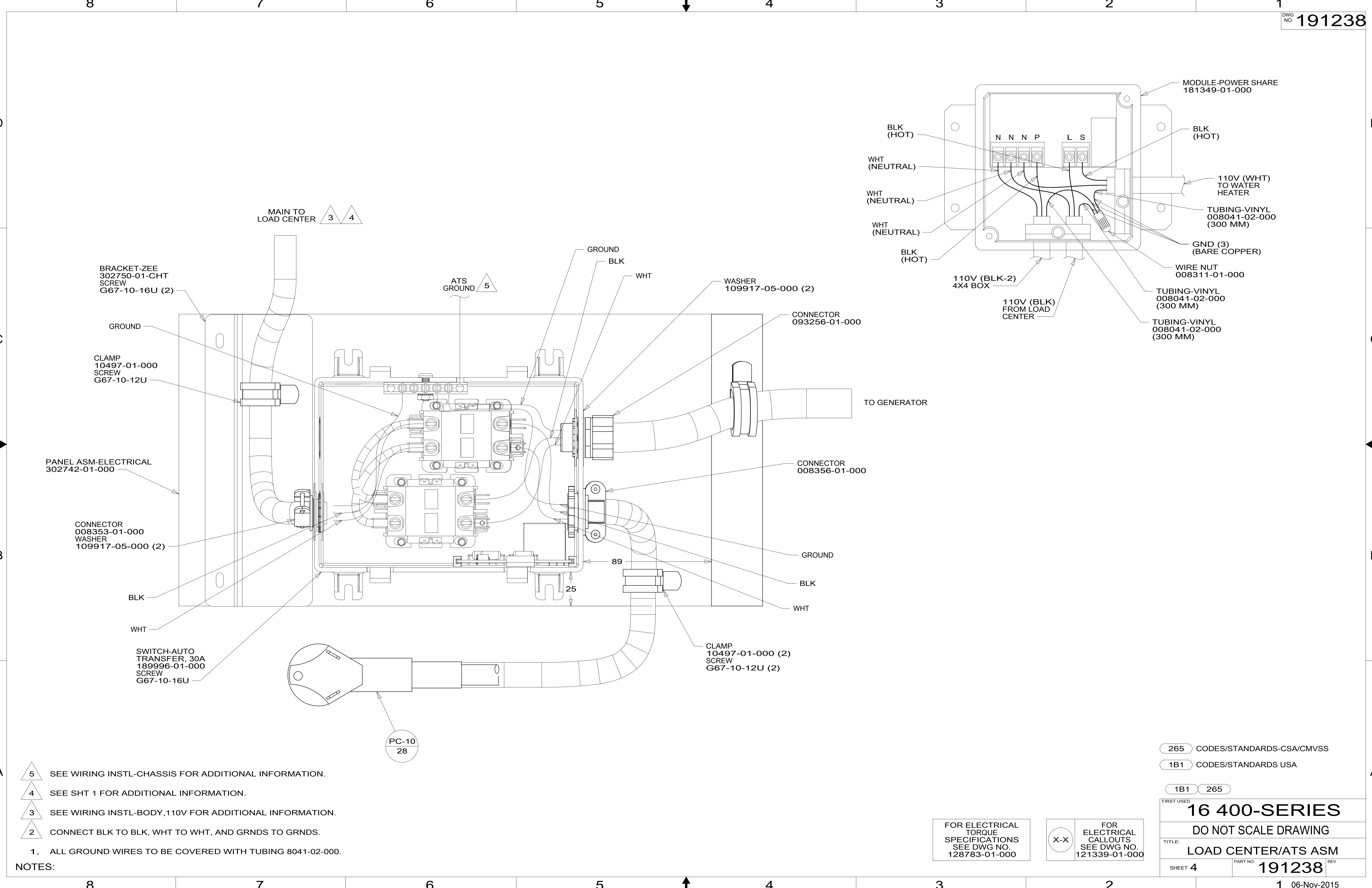
1 06-Nov-2015

FOR ELECTRICAL TORQUE SPECIFICATIONS SEE DWG NO. 128783-01-000

X-X

FOR ELECTRICAL CALLOUTS SEE DWG NO. 121339-01-000

\*191238 \*A



- 5 SEE WIRING INSTL-CHASSIS FOR ADDITIONAL INFORMATION.
- 4 SEE SHT 1 FOR ADDITIONAL INFORMATION.
- 3 SEE WIRING INSTL-BODY, 110V FOR ADDITIONAL INFORMATION.
- 2 CONNECT BLK TO BLK, WHT TO WHT, AND GRNDS TO GRNDS.

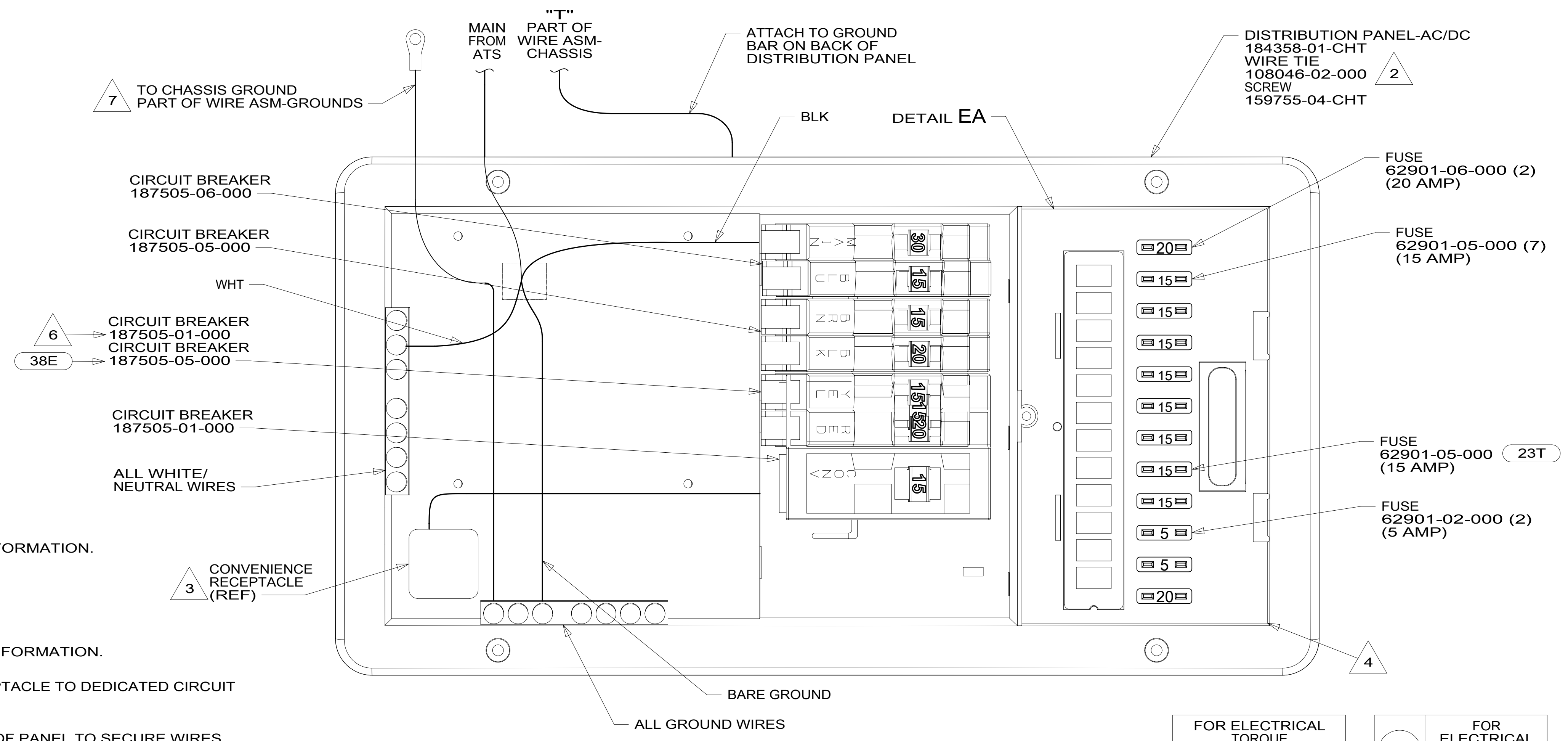
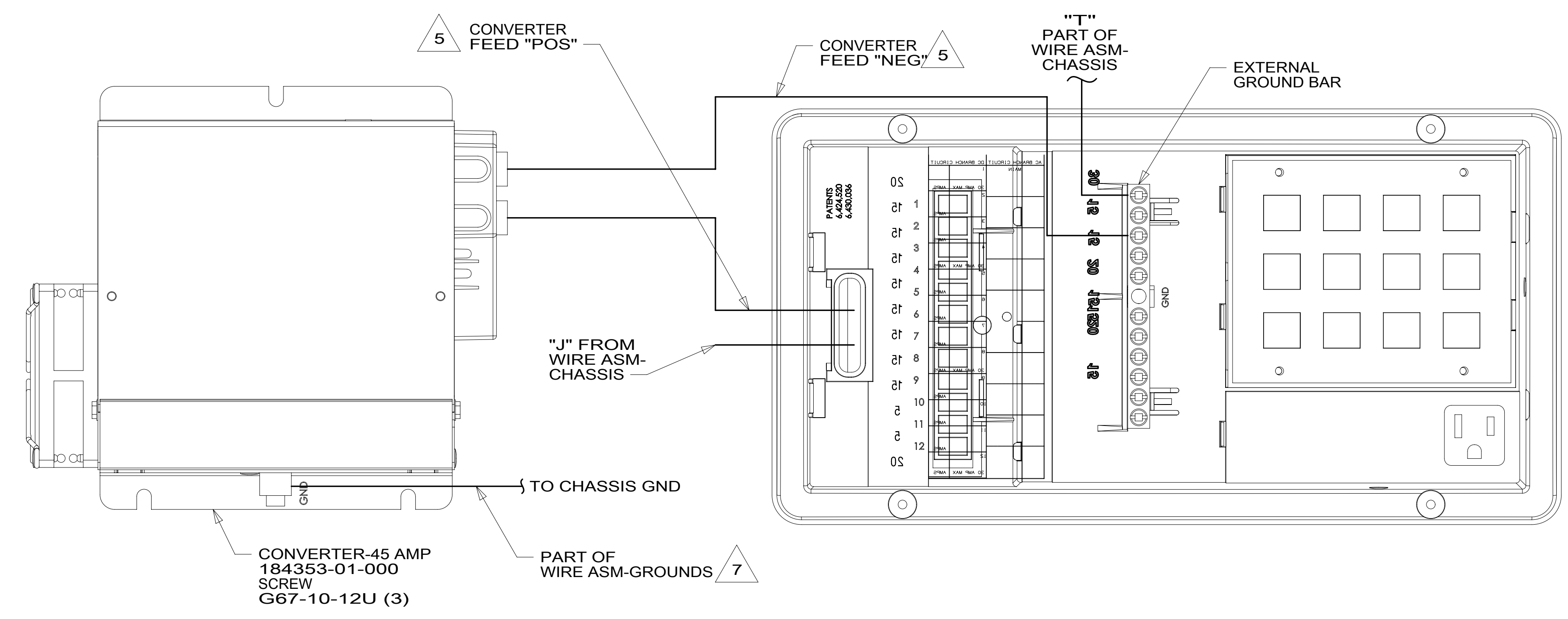
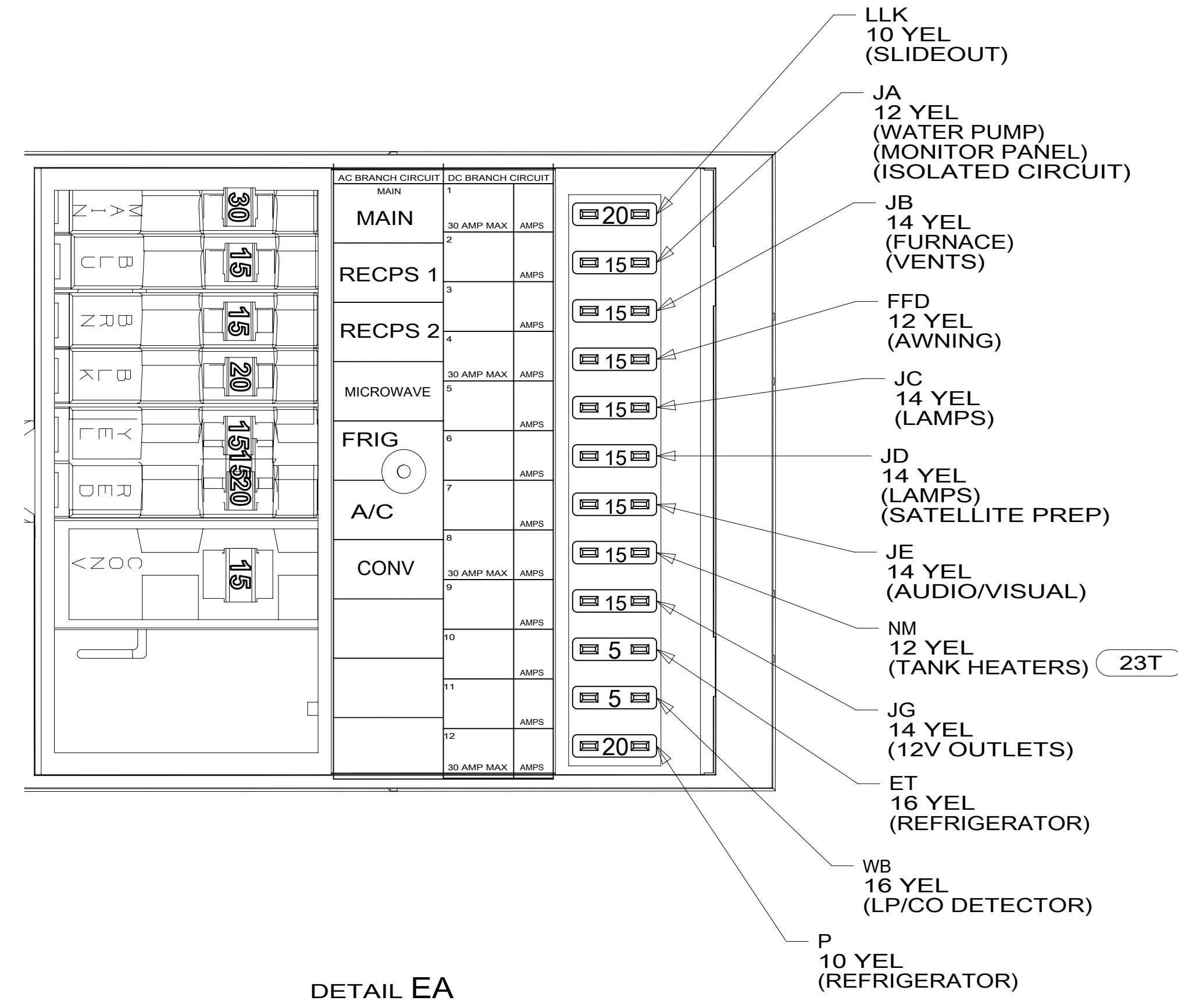
NOTES:  
1. ALL GROUND WIRES TO BE COVERED WITH TUBING 8041-02-000.

265	CODES/STANDARDS-CSA/CMVSS
1B1	CODES/STANDARDS USA
1B1	265
<b>FIRST USED</b>	
<b>16 400-SERIES</b>	
<b>DO NOT SCALE DRAWING</b>	
<b>TITLE: LOAD CENTER/ATS ASM</b>	
SHEET 4	PART NO <b>191238</b> REV
1 06-Nov-2015	

FOR ELECTRICAL TORQUE SPECIFICATIONS SEE DWG NO. 128783-01-000

FOR ELECTRICAL CALLOUTS SEE DWG NO. 121339-01-000

\*191238 \*A



- 7 SEE WIRING INSTL-CHASSIS FOR ADDITIONAL INFORMATION.
- 6 WITHOUT 38E
- 5 SEE SHT 1 FOR ADDITIONAL INFORMATION.
- 4 SEE WIRING INSTL-BODY, 12V FOR ADDITIONAL INFORMATION.
- 3 CONNECT BLACK WIRE FROM CONVENIENCE RECEPTACLE TO DEDICATED CIRCUIT BREAKER.
- 2 ATTACH TO UNUSED SCREW HOLE ON BACK SIDE OF PANEL TO SECURE WIRES.

NOTES:  
1. ALL GROUND WIRES TO BE COVERED WITH TUBING 8041-02-000.

- 38E CONVENIENCE PACKAGE
- 23T DRAINAGE SYSTEM-HEATED
- 265 CODES/STANDARDS-CSA/CMVSS
- 1B1 CODES/STANDARDS USA

FOR ELECTRICAL TORQUE SPECIFICATIONS SEE DWG NO. 128783-01-000

FOR ELECTRICAL CALLOUTS SEE DWG NO. 121339-01-000

FIRST USED  
**16 400-SERIES**  
DO NOT SCALE DRAWING  
TITLE: **LOAD CENTER/ATS ASM**  
SHEET 5 PART NO **191238** REV  
1 06-Nov-2015

\*191238\*