

8	7	
DRAWING NO.	MODEL	SHEET
191214-01	423T	1,2
191214-02	423A	1,3

RELEASE	REV/DATE	DWG NO	191214
REV ZONE	A	REVISION RECORD	DATE DFT-ORIG

	423T	423A	
CABLE ASM-CHASSIS BATTERY (RED)	141415-37-030	141415-37-018	3
CABLE ASM-COACH BATTERY (YEL)	141415-52-007	141415-52-019	
CABLE ASM-COACH BATTERY GND (BLK)	133567-12-007	133567-12-007	
CABLE ASM-GENERATOR (GRN)	141415-42-038	141415-42-039	3
CABLE ASM-GENERATOR GND (BLK)	133566-12-004	133566-12-005	3
CABLE ASM-FRAME GND	133566-12-003	133566-12-003	

- 3 ROUTING OF CABLE SHOWN IN WIRING INSTL-CHASSIS ONLY.
2. BATTERY CABLES ARE NOT TO BE ROUTED OVER BATTERY FILL CAPS.
1. SEE WIRING INSTL-CHASSIS FOR ADDITIONAL INFORMATION.

NOTES:

- 265 CODES/STANDARDS-CSA/CMVSS
- 1B1 CODES/STANDARDS USA
- 1B1 265

WINNEBAGO COPYRIGHT 2014 WINNEBAGO INDUSTRIES, INC.

ALL DIMENSIONS ARE IN MILLIMETERS

16 400-SERIES

UNSPECIFIED TOLERANCES ARE:

WHOLE DIM (X) :
ONE-PLACE (X.X) :
TWO-PLACE (X.XX) :
ANGLE :

THIRD ANGLE PROJECTION

DO NOT SCALE DRAWING REFER TO ES0018 FOR FASTENER TIGHTENING GUIDELINES

TITLE: **BATTERY INSTL**

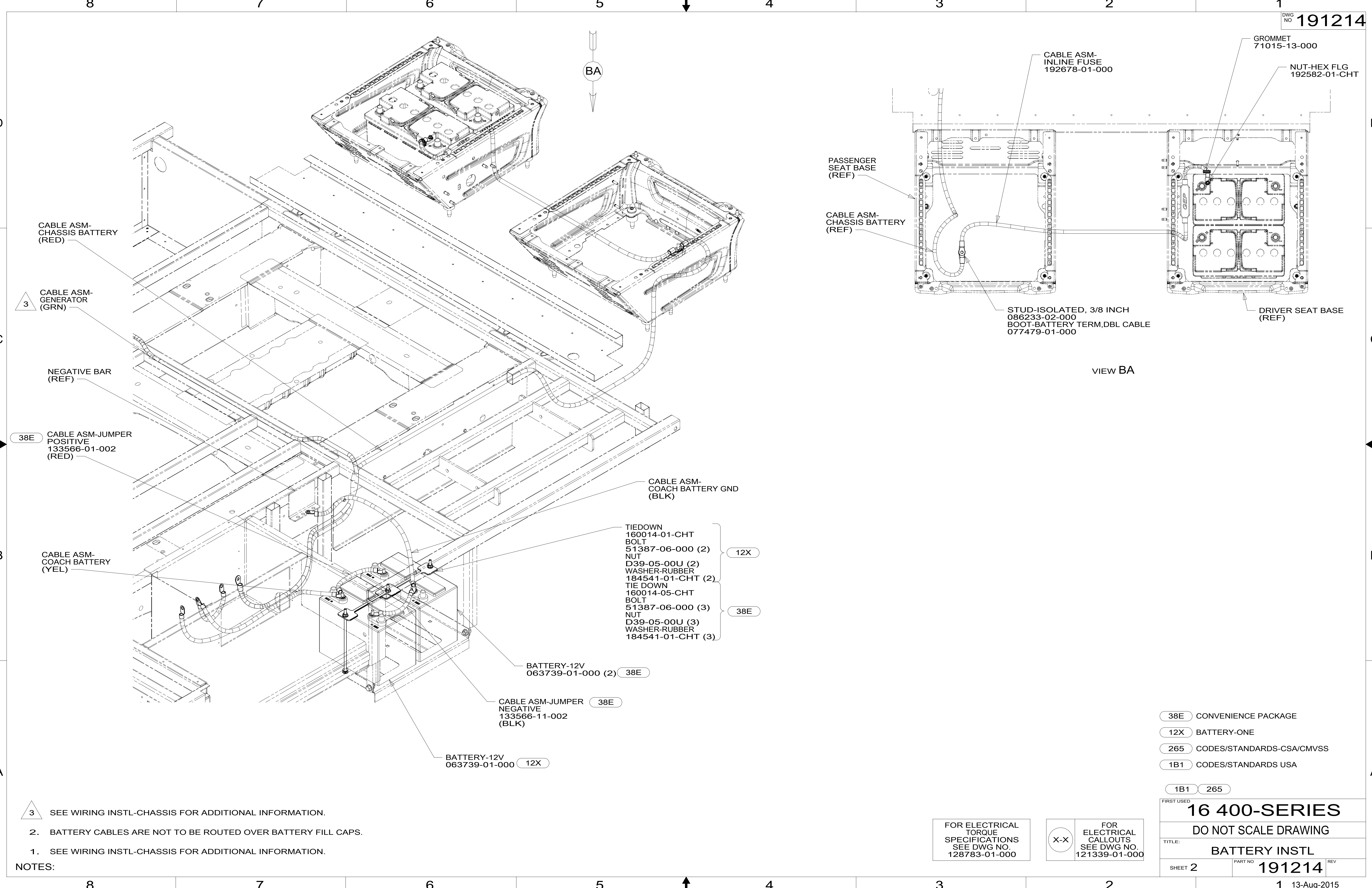
SHEET 1 OF 3 PART NO 191214 REV

REF: 1 13-Aug-2015

FOR ELECTRICAL TORQUE SPECIFICATIONS SEE DWG NO. 128783-01-000

FOR ELECTRICAL CALLOUTS SEE DWG NO. 121339-01-000

*191214 *A



CABLE ASM-CHASSIS BATTERY (RED)

3 CABLE ASM-GENERATOR (GRN)

NEGATIVE BAR (REF)

38E CABLE ASM-JUMPER POSITIVE 133566-01-002 (RED)

CABLE ASM-COACH BATTERY (YEL)

CABLE ASM-COACH BATTERY GND (BLK)

- TIEDOWN 160014-01-CHT
- BOLT 51387-06-000 (2) 12X
- NUT D39-05-00U (2)
- WASHER-RUBBER 184541-01-CHT (2)
- TIE DOWN 160014-05-CHT
- BOLT 51387-06-000 (3) 38E
- NUT D39-05-00U (3)
- WASHER-RUBBER 184541-01-CHT (3)

BATTERY-12V 063739-01-000 (2) 38E

CABLE ASM-JUMPER NEGATIVE 133566-11-002 (BLK) 38E

BATTERY-12V 063739-01-000 12X

PASSENGER SEAT BASE (REF)

CABLE ASM-CHASSIS BATTERY (REF)

CABLE ASM-INLINE FUSE 192678-01-000

STUD-ISOLATED, 3/8 INCH 086233-02-000 BOOT-BATTERY TERM, DBL CABLE 077479-01-000

GROMMET 71015-13-000

NUT-HEX FLG 192582-01-CHT

DRIVER SEAT BASE (REF)

VIEW BA

- NOTES:
- 3 SEE WIRING INSTL-CHASSIS FOR ADDITIONAL INFORMATION.
 - 2. BATTERY CABLES ARE NOT TO BE ROUTED OVER BATTERY FILL CAPS.
 - 1. SEE WIRING INSTL-CHASSIS FOR ADDITIONAL INFORMATION.

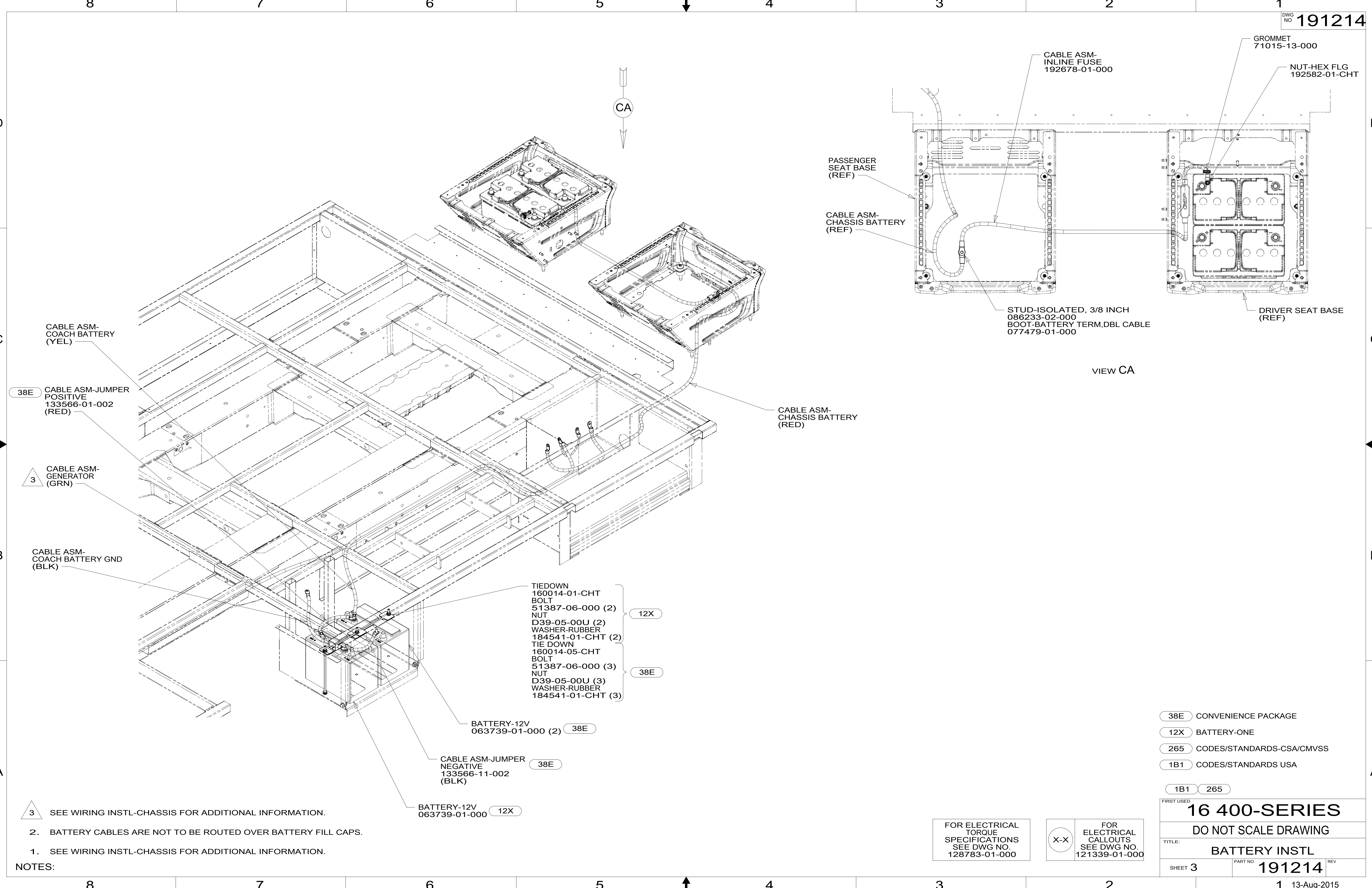
FOR ELECTRICAL TORQUE SPECIFICATIONS SEE DWG NO. 128783-01-000

X-X FOR ELECTRICAL CALLOUTS SEE DWG NO. 121339-01-000

- 38E CONVENIENCE PACKAGE
- 12X BATTERY-ONE
- 265 CODES/STANDARDS-CSA/CMVSS
- 1B1 CODES/STANDARDS USA

FIRST USED	
16 400-SERIES	
DO NOT SCALE DRAWING	
TITLE: BATTERY INSTL	
SHEET 2	PART NO 191214 REV

191214



- CABLE ASM-COACH BATTERY (YEL)
- 38E CABLE ASM-JUMPER POSITIVE 133566-01-002 (RED)
- 3 CABLE ASM-GENERATOR (GRN)
- CABLE ASM-COACH BATTERY GND (BLK)

- TIEDOWN 160014-01-CHT
- BOLT 51387-06-000 (2)
- NUT D39-05-00U (2)
- WASHER-RUBBER 184541-01-CHT (2)
- TIE DOWN 160014-05-CHT
- BOLT 51387-06-000 (3)
- NUT D39-05-00U (3)
- WASHER-RUBBER 184541-01-CHT (3)

BATTERY-12V 063739-01-000 (2) 38E

CABLE ASM-JUMPER NEGATIVE 133566-11-002 (BLK) 38E

BATTERY-12V 063739-01-000 12X

- 3 SEE WIRING INSTL-CHASSIS FOR ADDITIONAL INFORMATION.
- 2. BATTERY CABLES ARE NOT TO BE ROUTED OVER BATTERY FILL CAPS.
- 1. SEE WIRING INSTL-CHASSIS FOR ADDITIONAL INFORMATION.

NOTES:

FOR ELECTRICAL TORQUE SPECIFICATIONS SEE DWG NO. 128783-01-000

FOR ELECTRICAL CALLOUTS SEE DWG NO. 121339-01-000

- 38E CONVENIENCE PACKAGE
- 12X BATTERY-ONE
- 265 CODES/STANDARDS-CSA/CMVSS
- 1B1 CODES/STANDARDS USA

FIRST USED

16 400-SERIES

DO NOT SCALE DRAWING

TITLE: **BATTERY INSTL**

SHEET 3 PART NO **191214** REV

13-Aug-2015

191214