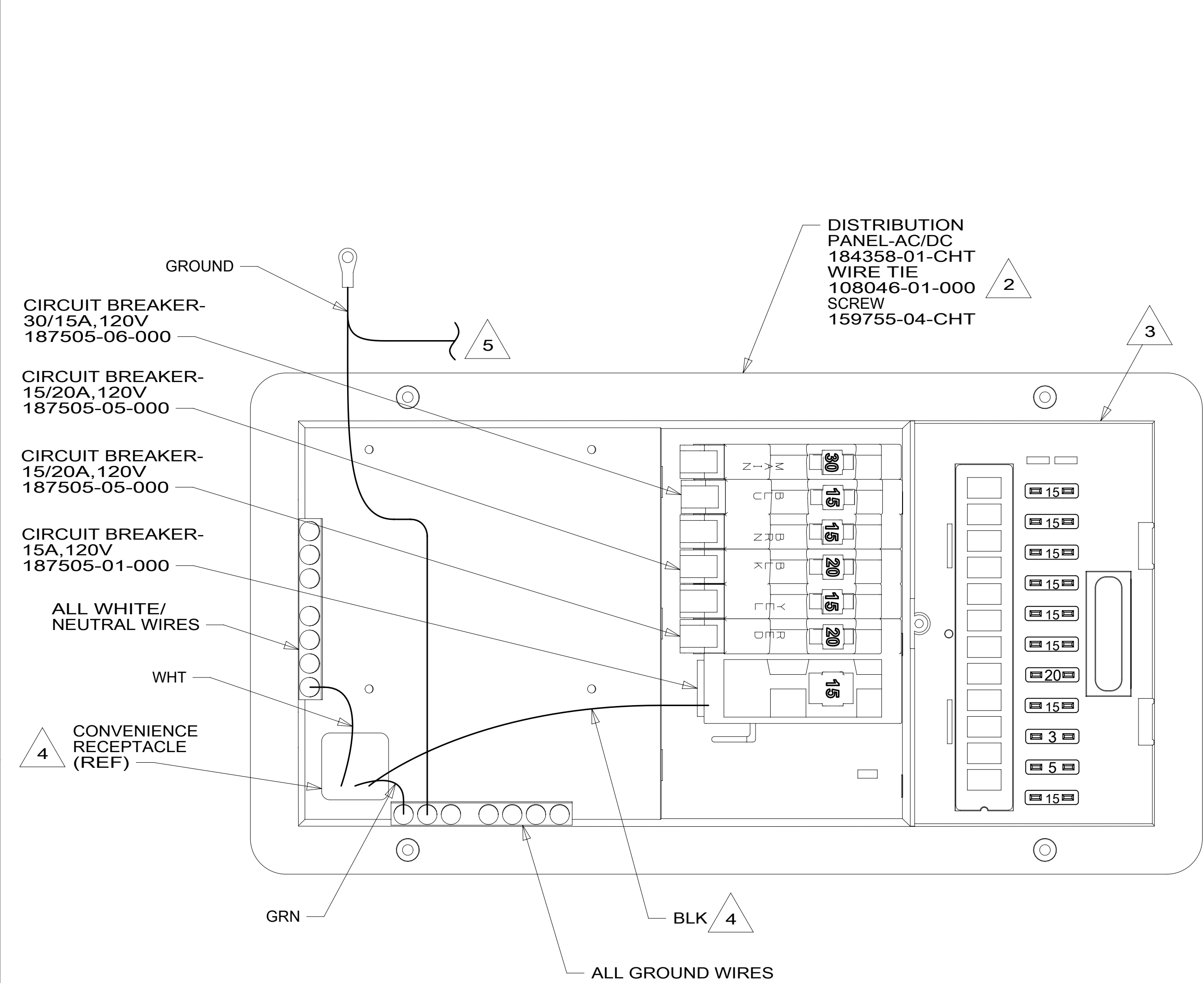


DRAWING NO.	MODEL	SHEET
190956-01	H25Q	1,2,3
190956-02	H25P	1,2,4
190956-03	H25T	1,2,5

RELEASE	REV/DATE	DWG NO	190956
REV ZONE	REVISION RECORD	DATE	DFT-ORIG



		H25Q	H25P	H25T	
GROUND	6-G	136145-02-030	136145-02-020	136145-02-030	
GENERATOR CABLE ASM	1B1	164957-01-050	164957-01-050	164957-01-050	33F
	265	164957-03-050	164957-03-050	164957-03-050	33F
THROW IN WIRE #1	1B1	136131-19-006	136131-19-036	-----	6
	265	136134-19-006	136134-19-036	-----	6
THROW IN WIRE #2	1B1	136131-19-003	-----	-----	6
	265	136134-19-003	-----	-----	6
THROW IN WIRE #3	1B1	136131-03-003	136131-03-003	136131-03-003	6 7
	265	136134-03-003	136134-03-003	136134-03-003	6 7
THROW IN WIRE #4	1B1	136131-19-005	136131-19-005	136131-19-005	6 7
	265	136134-19-005	136134-19-005	136134-19-005	6 7
MAIN CABLE ASM	1B1	-----	-----	164957-05-022	
	265	-----	-----	164957-06-022	
THROW IN WIRE #5	1B1	136131-19-057 6	136131-19-070 8	136131-19-182 6	
	265	136134-19-057 6	136134-19-070 8	136134-19-182 6	
RED	1B1	136135-07-047	136135-07-040	136135-07-044	
	265	136136-07-047	136136-07-040	136136-07-044	
YEL	1B1	136131-05-047	136131-05-018	136131-05-016	
	265	136134-05-047	136134-05-018	136134-05-016	
BLK	1B1	136135-06-010	136135-06-038	136135-06-012	
	265	136136-06-010	136136-06-038	136136-06-012	
BLU	1B1	136131-02-191	136131-02-135	136131-02-215	
	265	136134-02-191	136134-02-135	136134-02-215	
BLK-2	1B1	136135-22-070	-----	136135-22-052	
	265	136136-22-070	-----	136136-22-052	
WHT	1B1	136135-09-045	-----	136135-09-040	
	265	136136-09-045	-----	136136-09-040	
MAIN	1B1	136137-01-031	136137-01-040	136137-01-036	
	265	136138-01-031	136138-01-040	136138-01-036	
BRN	1B1	136131-03-053	136131-03-030	136131-03-027	6
	265	136134-03-053	136134-03-030	136134-03-027	6

- 8 FOR CONNECTOR INSTALLATION SEE DETAIL BA.
- 7 FOR ADDITIONAL INFORMATION SEE DETAIL BC.
- 6 FOR CONNECTOR INSTALLATION SEE DETAIL BB.
- 5 CONNECT ONE GROUND WIRE TO GROUND BAR INSIDE DISTRIBUTION PANEL, CONNECT ONE GROUND WIRE TO DC GROUND BAR ON BACK SIDE OF DISTRIBUTION PANEL.
- 4 CONNECT BLACK WIRE FROM CONVENIENCE RECEPTACLE TO DEDICATED CIRCUIT BREAKER.
- 3 SEE WIRING INSTL-BODY, 12V FOR ADDITIONAL INFORMATION.
- 2 ATTACH TO UNUSED SCREW HOLE ON BACK SIDE OF PANEL TO SECURE WIRES.

NOTES:
1. ALL GROUND WIRES TO BE COVERED WITH TUBING 8041-02-000.

FOR ELECTRICAL TORQUE SPECIFICATIONS SEE DWG NO. 128783-01-000

FOR ELECTRICAL CALLOUTS SEE DWG NO. 121339-01-000

- 33F GEN-3.5 KW ONAN DIESEL
- 265 CODES/STANDARDS-CSA/CMVSS
- 1B1 CODES/STANDARDS USA

WINNEBAGO COPYRIGHT 2014 WINNEBAGO INDUSTRIES, INC.

UNSPECIFIED TOLERANCES ARE:
 WHOLE DIM (X) : 3
 ONE-PLACE (X.X) : 1.5
 TWO-PLACE (X.XX) : 0.50
 ANGLE : 1'

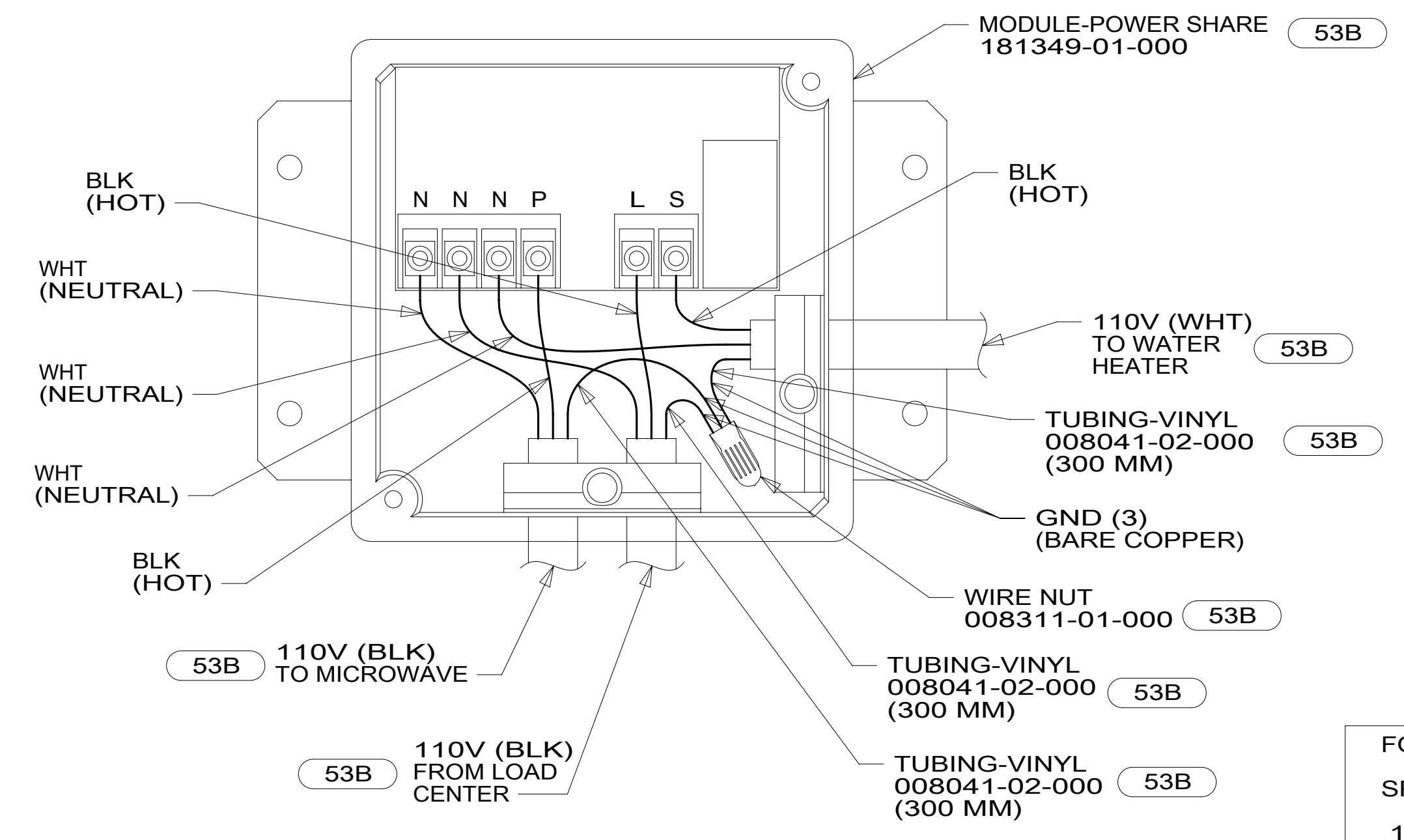
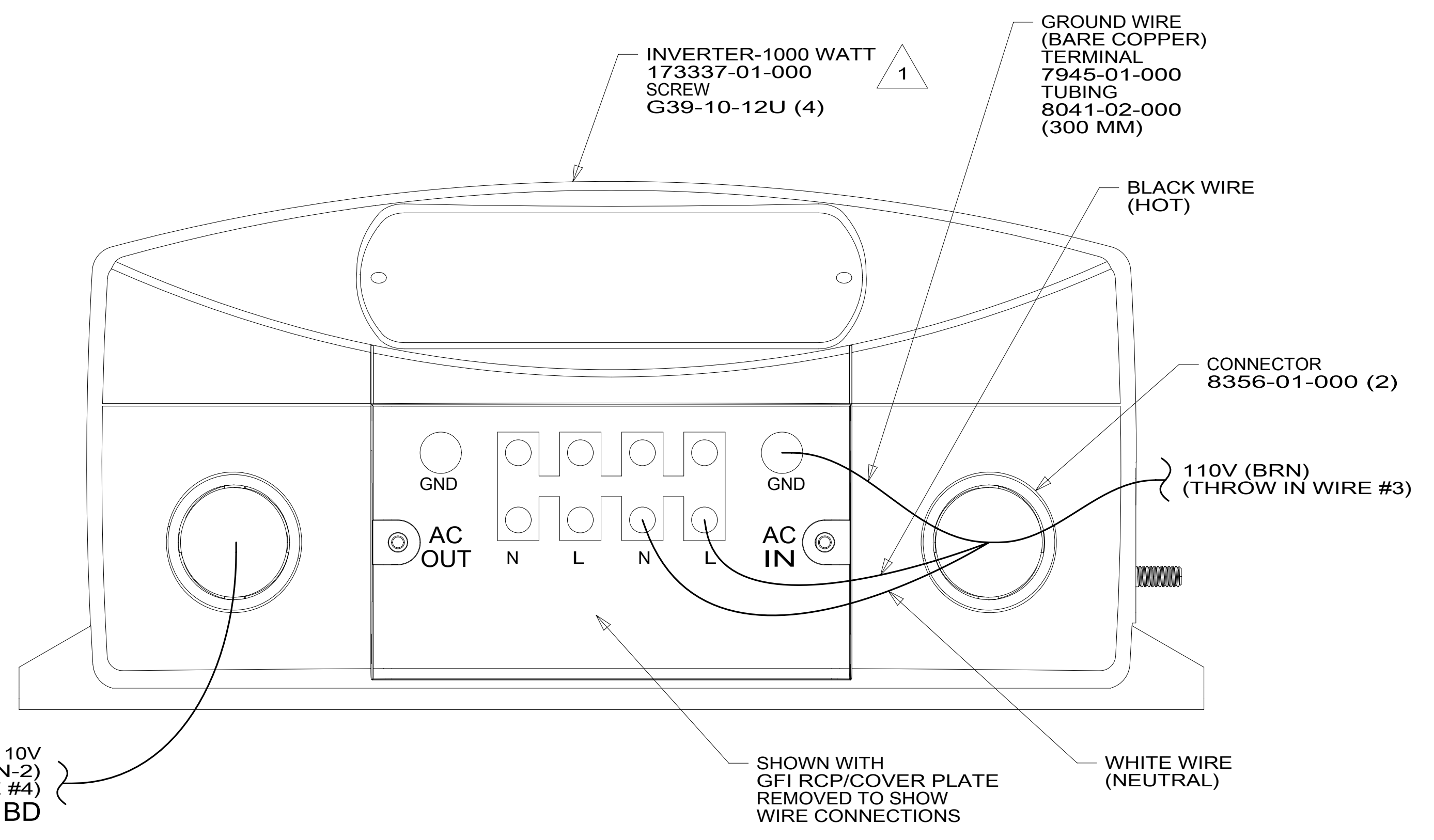
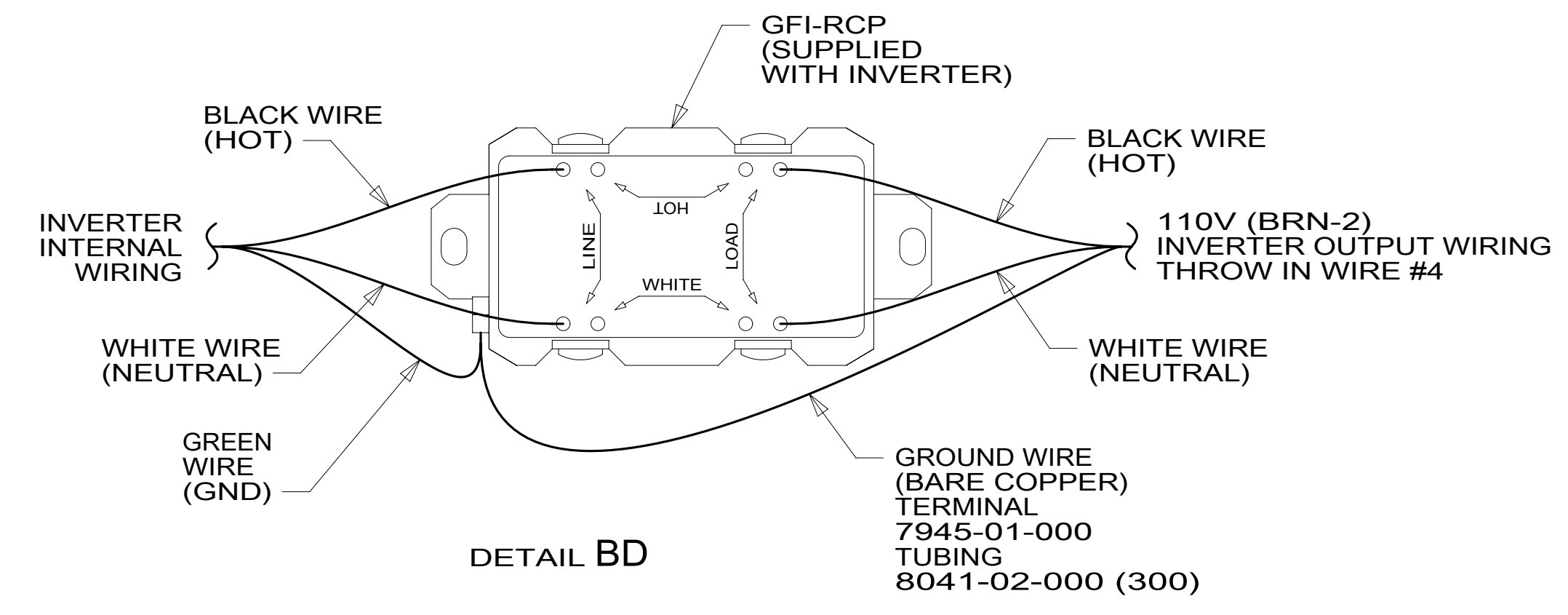
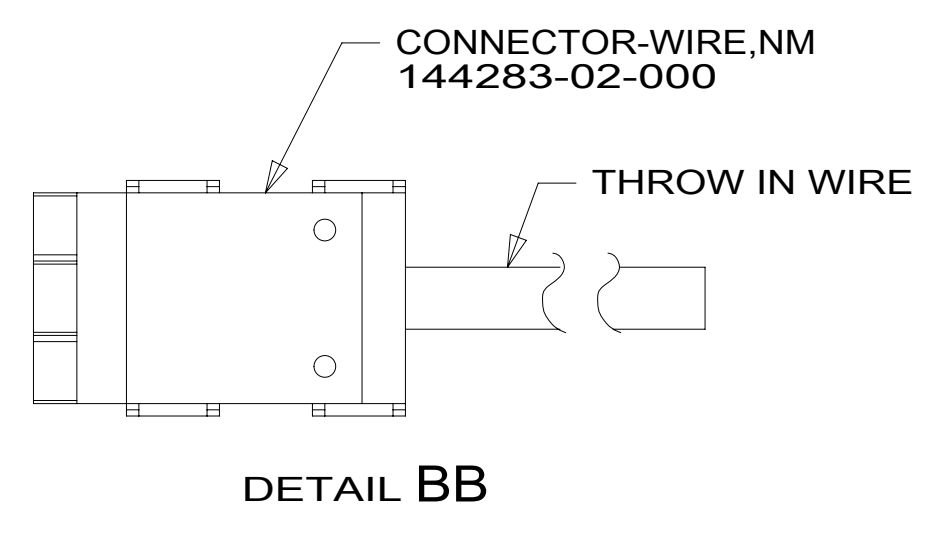
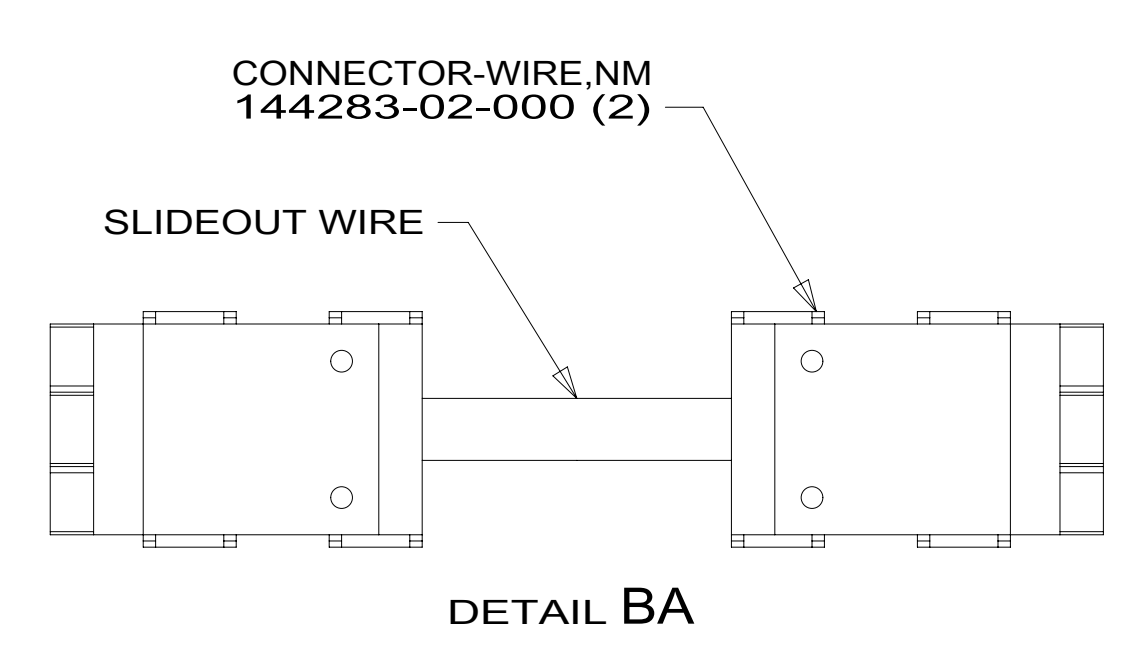
THIRD ANGLE PROJECTION

DO NOT SCALE DRAWING REFER TO ES0018 FOR FASTENER TIGHTENING GUIDELINES

TITLE: **LOAD CENTER/ATS ASM**

SHEET **1** OF **5** PART NO **190956** REV

190956



- (53B) WTR HTR-6GAL ELECTRIC/LP GAS
- (265) CODES/STANDARDS-CSA/CMVSS
- (1B1) CODES/STANDARDS USA

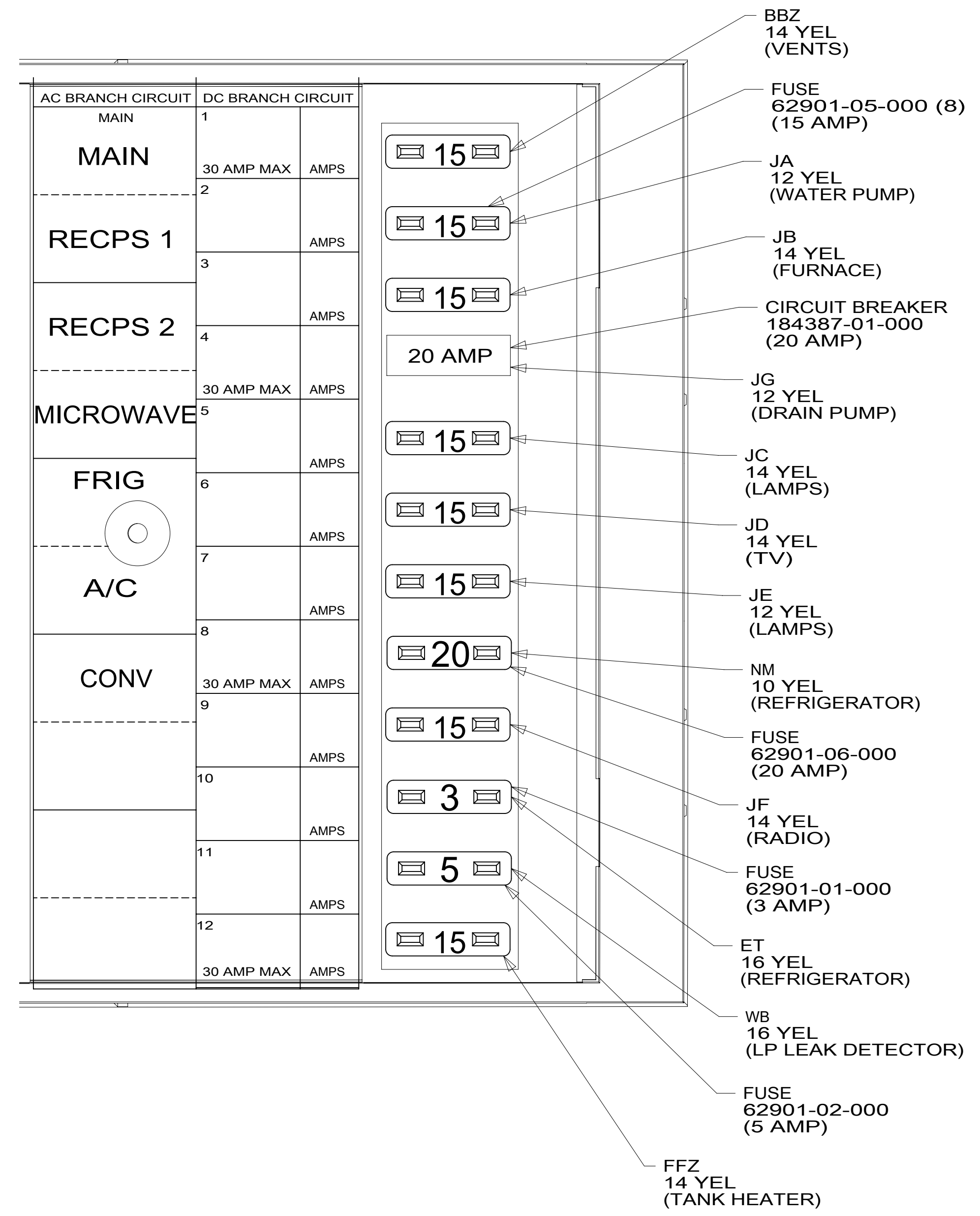
FIRST USED	
15 H-SERIES	
DO NOT SCALE DRAWING	
TITLE: LOAD CENTER/ATS ASM	
SHEET 2	PART NO 190956 REV

FOR ELECTRICAL
TORQUE
SPECIFICATIONS
SEE DWG NO.
128783-01-000

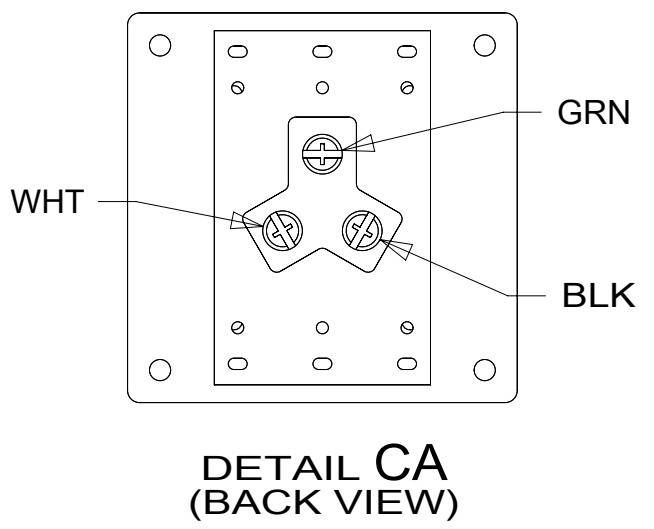
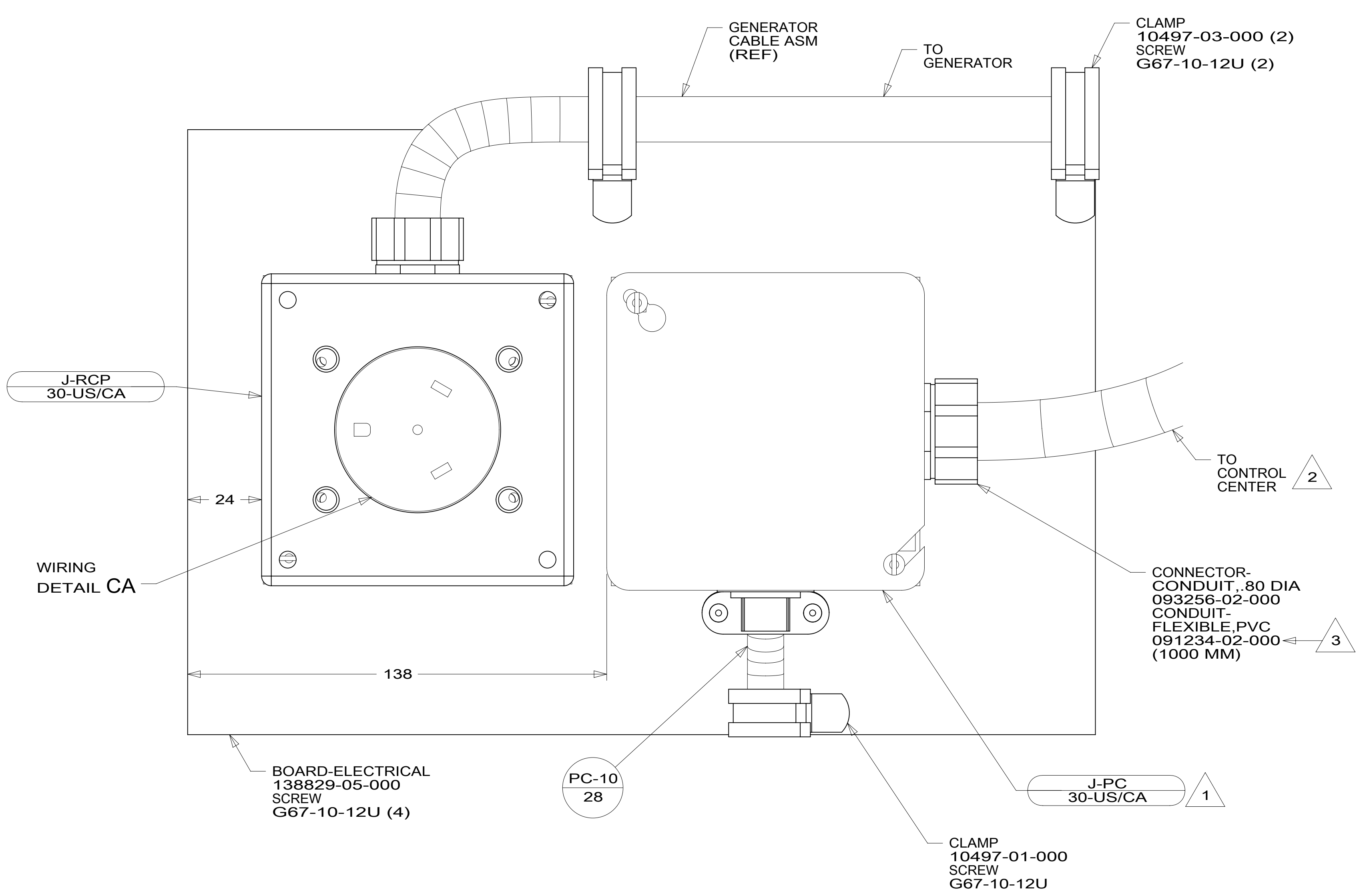
FOR
ELECTRICAL
CALLOUTS
SEE DWG NO.
121339-01-000

NOTES:
1 INVERTER SUPPLIED WITH REMOTE PANEL.
SEND PANEL TO MANUFACTURING LINE.

190956 A



- BBZ 14 YEL (VENTS)
- FUSE 62901-05-000 (8) (15 AMP)
- JA 12 YEL (WATER PUMP)
- JB 14 YEL (FURNACE)
- CIRCUIT BREAKER 184387-01-000 (20 AMP)
- JG 12 YEL (DRAIN PUMP)
- JC 14 YEL (LAMPS)
- JD 14 YEL (TV)
- JE 12 YEL (LAMPS)
- NM 10 YEL (REFRIGERATOR)
- FUSE 62901-06-000 (20 AMP)
- JF 14 YEL (RADIO)
- FUSE 62901-01-000 (3 AMP)
- ET 16 YEL (REFRIGERATOR)
- WB 16 YEL (LP LEAK DETECTOR)
- FUSE 62901-02-000 (5 AMP)
- FFZ 14 YEL (TANK HEATER)



- NOTES:
- 3 SECURE CONDUIT TO POWER CORD WITH TAPE 8363-01-000 FOR TRANSPORTATION PURPOSES.
 - 2 WIRES CONNECTED TO 4X4 BOX ON ASSEMBLY LINE ONCE PARTS ARE INSTALLED.
 - 1 CONNECT BLK TO BLK, WHT TO WHT, AND GRNDS TO GRNDS.

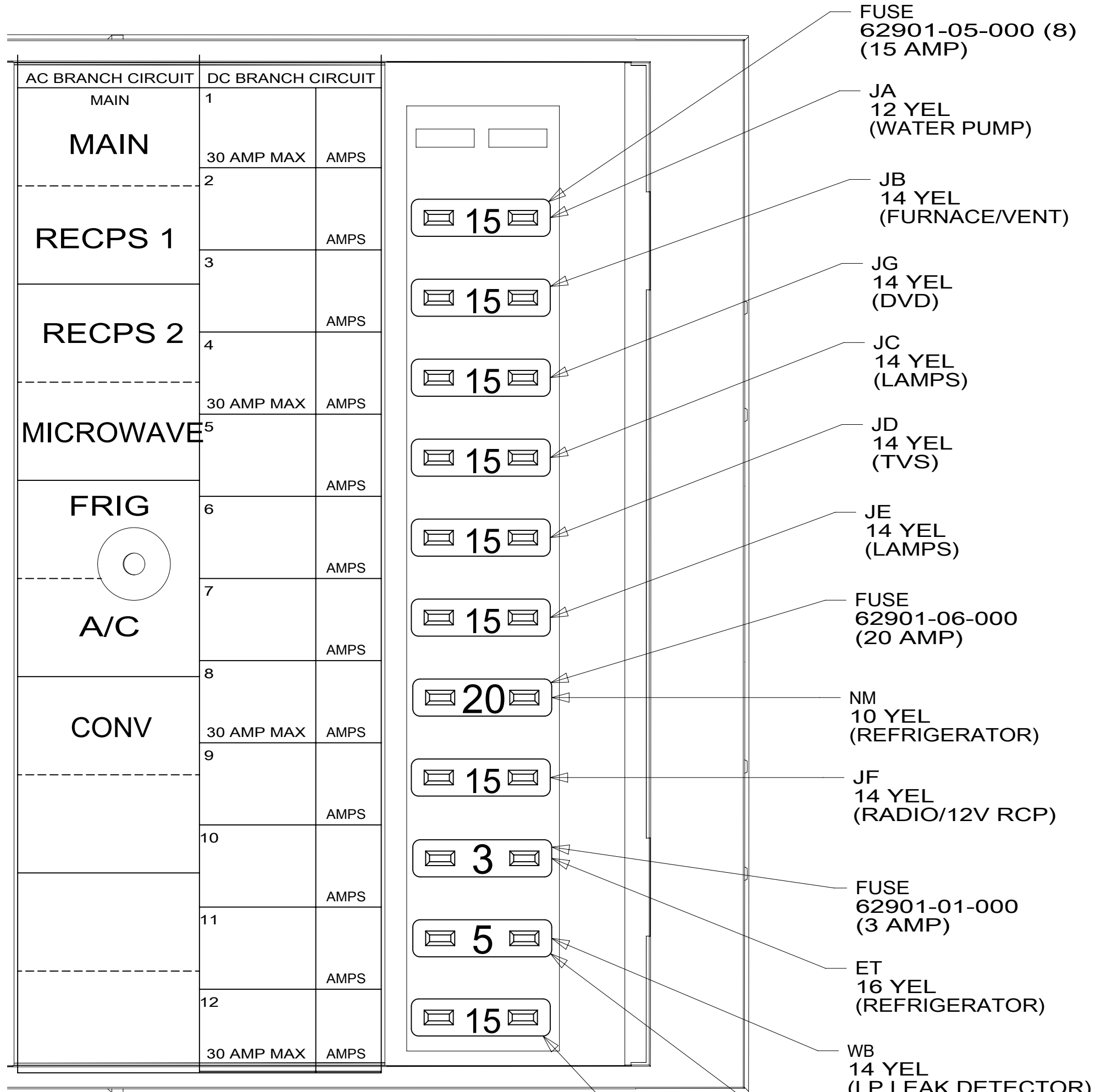
FOR ELECTRICAL TORQUE SPECIFICATIONS SEE DWG NO. 128783-01-000

FOR ELECTRICAL CALLOUTS SEE DWG NO. 121339-01-000

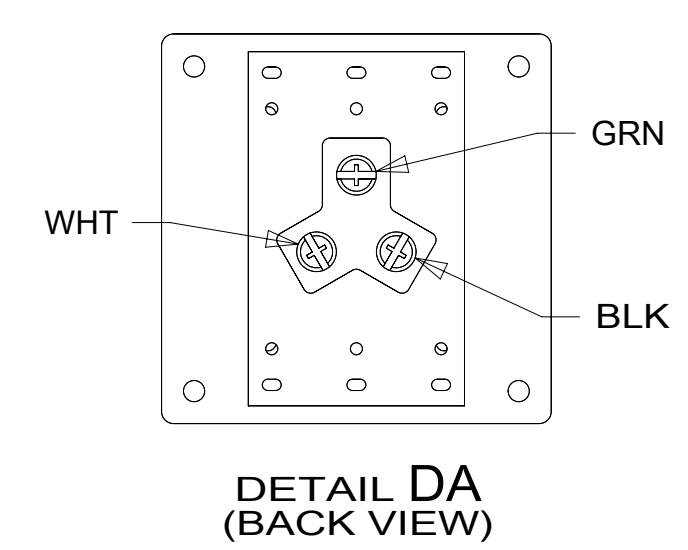
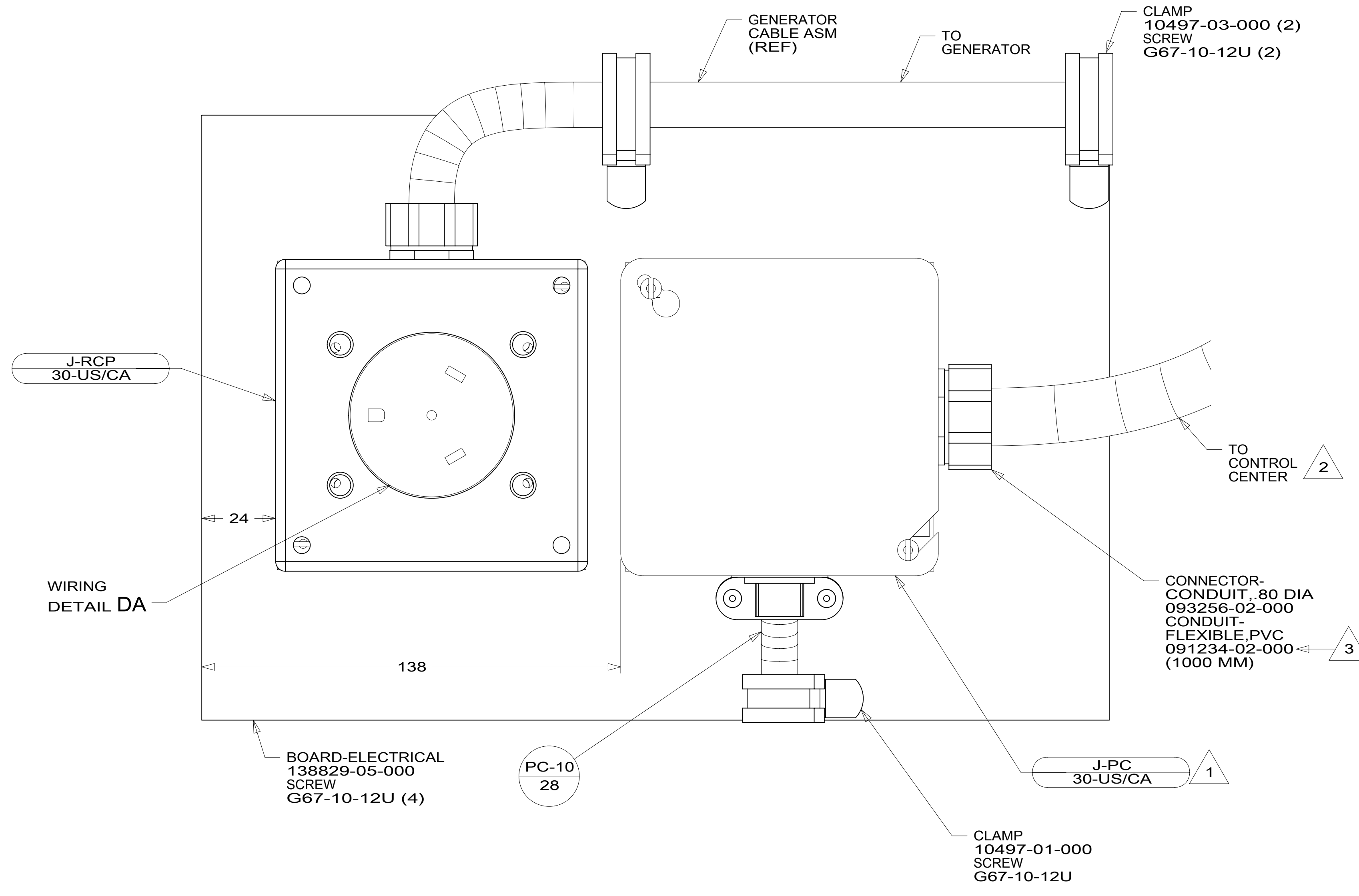
- 265 CODES/STANDARDS-CSA/CMVSS
- 1B1 CODES/STANDARDS USA
- 1B1 265

FIRST USED	
15 H-SERIES	
DO NOT SCALE DRAWING	
TITLE: LOAD CENTER/ATS ASM	
SHEET 3	PART NO 190956 REV
1 17-Nov-2015	

190956



- FUSE 62901-05-000 (8) (15 AMP)
- JA 12 YEL (WATER PUMP)
- JB 14 YEL (FURNACE/VENT)
- JG 14 YEL (DVD)
- JC 14 YEL (LAMPS)
- JD 14 YEL (TVS)
- JE 14 YEL (LAMPS)
- FUSE 62901-06-000 (20 AMP)
- NM 10 YEL (REFRIGERATOR)
- JF 14 YEL (RADIO/12V RCP)
- FUSE 62901-01-000 (3 AMP)
- ET 16 YEL (REFRIGERATOR)
- WB 14 YEL (LP LEAK DETECTOR)
- FUSE 62901-02-000 (5 AMP)
- FFZ 12 YEL (TANK HTR/VENT)



- NOTES:
- 3 SECURE CONDUIT TO POWER CORD WITH TAPE 8363-01-000 FOR TRANSPORTATION PURPOSES.
 - 2 WIRES CONNECTED TO 4X4 BOX ON ASSEMBLY LINE ONCE PARTS ARE INSTALLED.
 - 1 CONNECT BLK TO BLK, WHT TO WHT, AND GRNDS TO GRNDS.

FOR ELECTRICAL TORQUE SPECIFICATIONS SEE DWG NO. 128783-01-000

FOR ELECTRICAL CALLOUTS SEE DWG NO. 121339-01-000

- 265 CODES/STANDARDS-CSA/CMVSS
- 1B1 CODES/STANDARDS USA
- 1B1 265

FIRST USED

15 H-SERIES

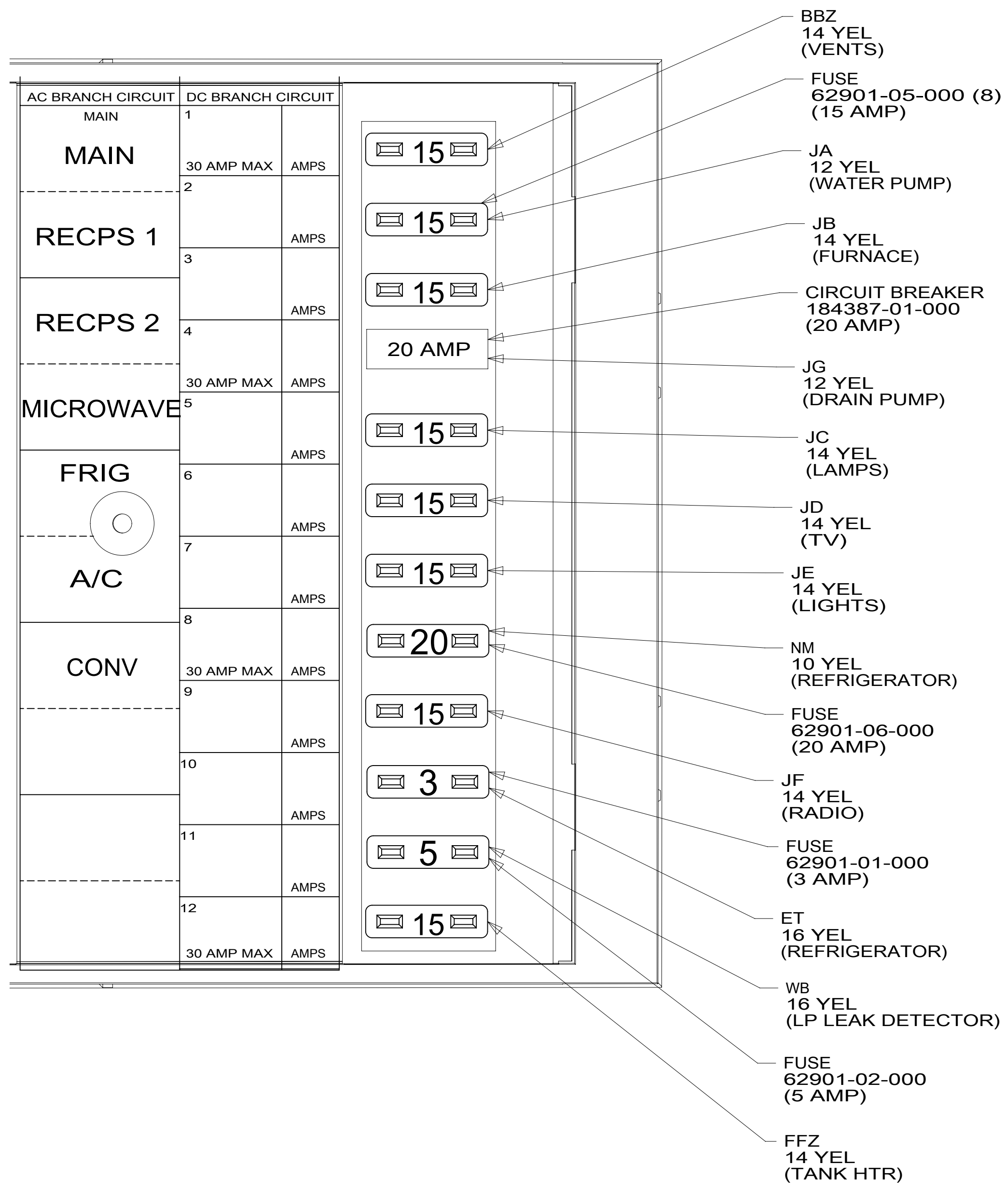
DO NOT SCALE DRAWING

TITLE: **LOAD CENTER/ATS ASM**

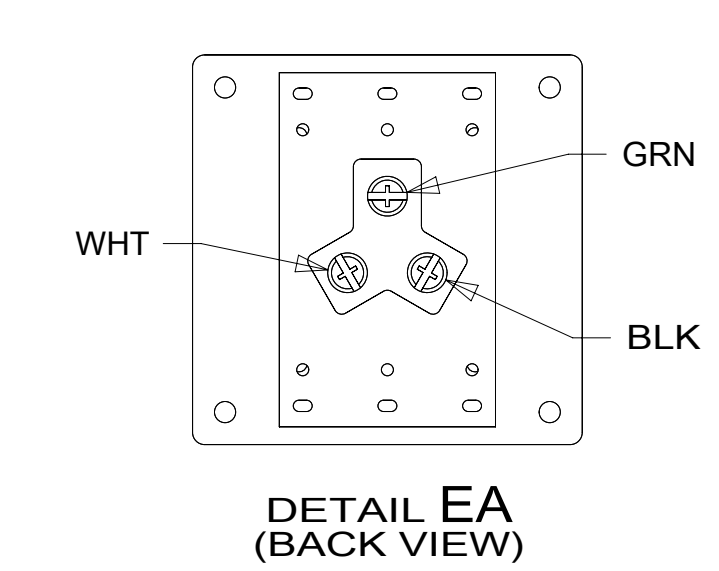
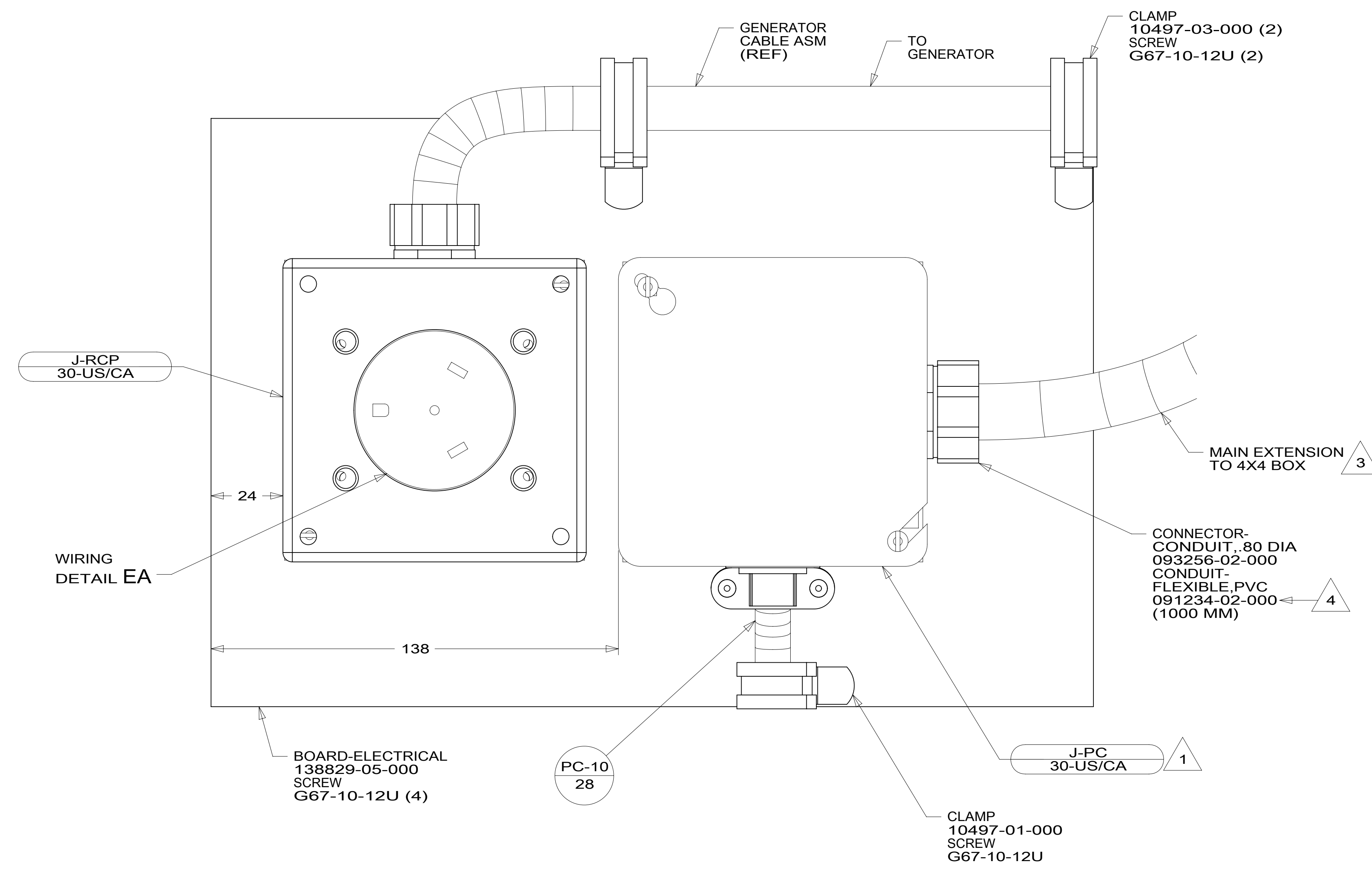
SHEET 4 PART NO **190956** REV

17-Nov-2015

190956



- BBZ 14 YEL (VENTS)
- FUSE 62901-05-000 (8) (15 AMP)
- JA 12 YEL (WATER PUMP)
- JB 14 YEL (FURNACE)
- CIRCUIT BREAKER 184387-01-000 (20 AMP)
- JG 12 YEL (DRAIN PUMP)
- JC 14 YEL (LAMPS)
- JD 14 YEL (TV)
- JE 14 YEL (LIGHTS)
- NM 10 YEL (REFRIGERATOR)
- FUSE 62901-06-000 (20 AMP)
- JF 14 YEL (RADIO)
- FUSE 62901-01-000 (3 AMP)
- ET 16 YEL (REFRIGERATOR)
- WB 16 YEL (LP LEAK DETECTOR)
- FUSE 62901-02-000 (5 AMP)
- FFZ 14 YEL (TANK HTR)



- NOTES:
- 4 SECURE CONDUIT TO POWER CORD WITH TAPE 8363-01-000 FOR TRANSPORTATION PURPOSES.
 - 3 MAIN EXTENSION TO BE CONNECTED TO 4X4 BOX AS SHOWN IN SUB-ASSEMBLY AREA.
 - 2 WIRES CONNECTED TO 4X4 BOX ON ASSEMBLY LINE ONCE PARTS ARE INSTALLED.
 - 1 CONNECT BLK TO BLK, WHT TO WHT, AND GRNDS TO GRNDS.

FOR ELECTRICAL TORQUE SPECIFICATIONS SEE DWG NO. 128783-01-000

FOR ELECTRICAL CALLOUTS SEE DWG NO. 121339-01-000

- 265 CODES/STANDARDS-CSA/CMVSS
- 1B1 CODES/STANDARDS USA
- 1B1 265

FIRST USED	
15 H-SERIES	
DO NOT SCALE DRAWING	
TITLE: LOAD CENTER/ATS ASM	
SHEET 5	PART NO 190956 REV
1 17-Nov-2015	

190956