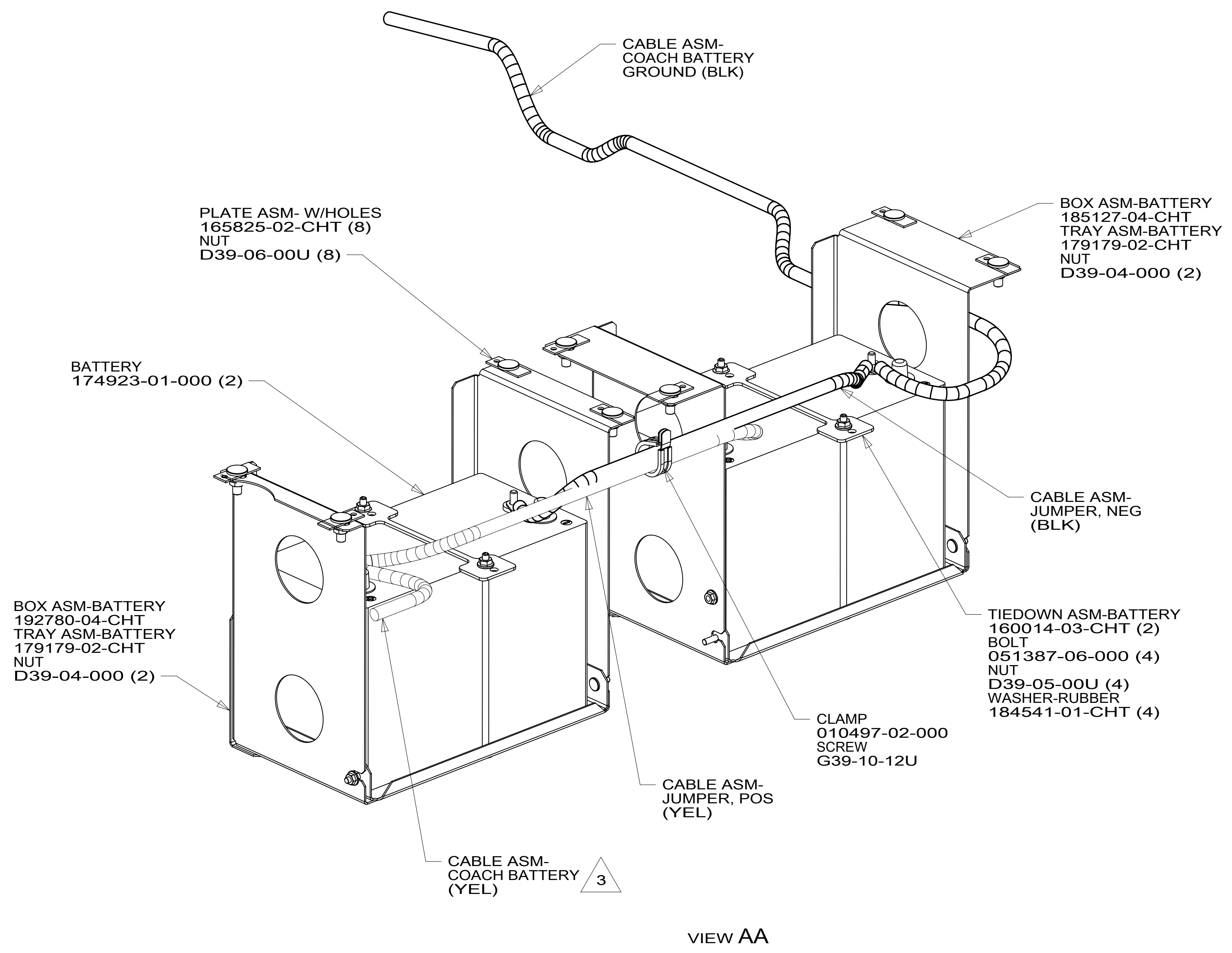
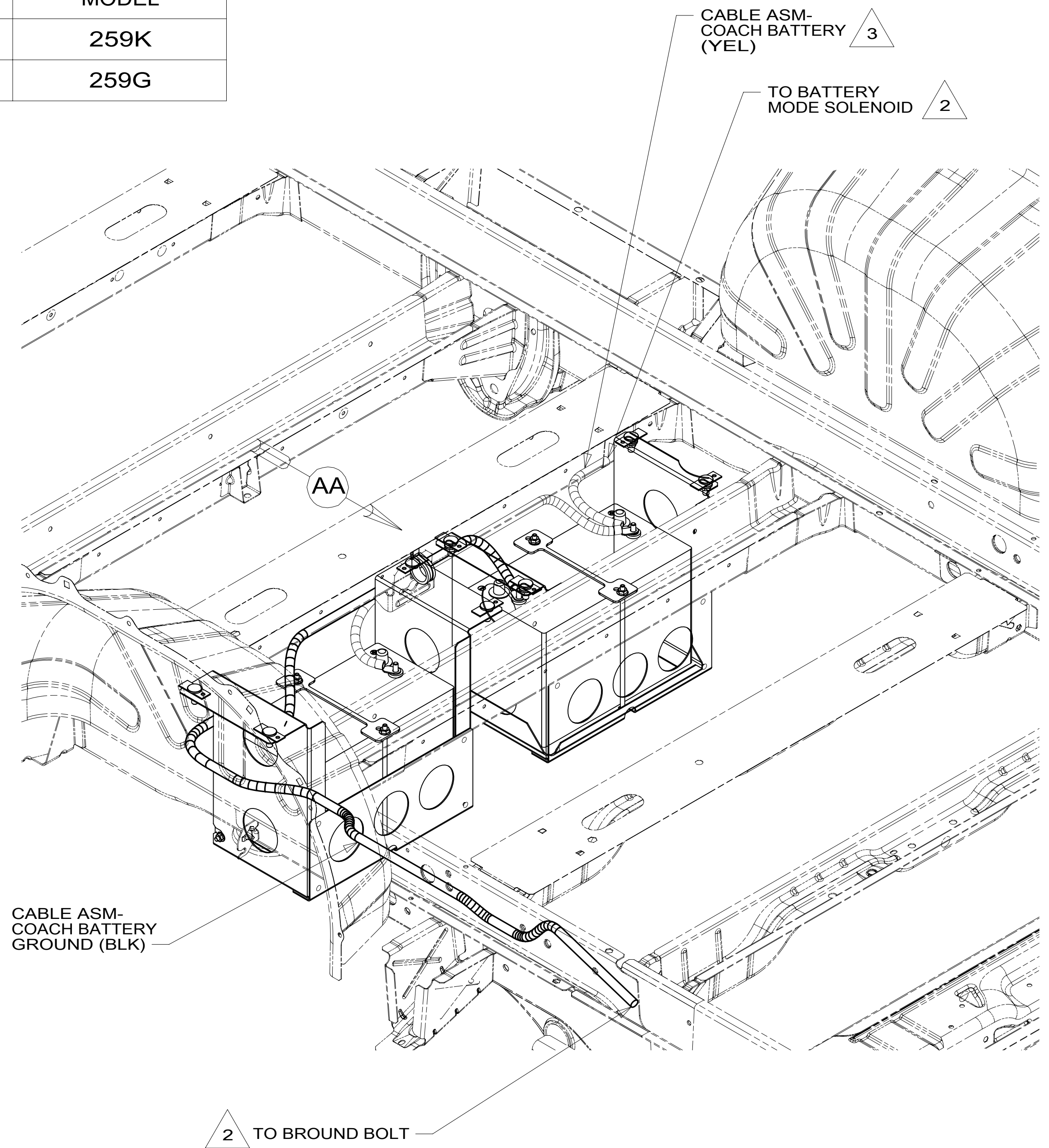


DRAWING NO.	MODEL
190864-01	259K
190864-02	259G



VIEW AA

- 3 SEE WIRING INSTL-CHASSIS FOR CABLE ROUTING.
- 2 SEE WIRING INSTL-CHASSIS FOR ADDITIONAL INFORMATION.

1. AT MINIMUM ALL WIRES TO BE SUPPORTED AND SECURED PER CODE REQUIREMENTS. USE CLAMP 10495 OR 10497 OR WIRE TIE 8343 OR 108046 AND SCREW G67-XX-XXX OR G56-XX-XXX AS APPROPRIATE FOR INSTALLATION.

NOTES:

	259K	259G	
CABLE ASM-STARTER (RED)	185087-01-039	185087-01-063	2
CABLE ASM-COACH BATTERY (YEL)	141415-52-018	141415-52-022	3
CABLE ASM-COACH BATTERY GND (BLK)	133566-17-009	133566-17-009	
CABLE ASM-GENERATOR (GRN)	141415-42-020	141415-42-020	2
CABLE ASM-GENERATOR GND (BLK)	133566-17-020	133566-17-020	2
CABLE ASM-JUMPER,POS	141415-52-009	141415-52-009	
CABLE ASM-JUMPER,NEG	133566-17-009	133566-17-009	

FOR ELECTRICAL TORQUE SPECIFICATIONS SEE DWG NO. 128783-01-000

FOR ELECTRICAL CALLOUTS SEE DWG NO. 121339-01-000

265 CODES/STANDARDS-CSA/CMVSS
 1B1 CODES/STANDARDS USA

1B1 265

WINNEBAGO COPYRIGHT 2014 WINNEBAGO INDUSTRIES, INC.

ALL DIMENSIONS ARE IN MILLIMETERS

15 259K

UNSPECIFIED TOLERANCES ARE: MATERIAL:

WHOLE DIM (X) :
 ONE-PLACE (X.X) :
 TWO-PLACE (X.XX) :
 ANGLE :

THIRD ANGLE PROJECTION

DO NOT SCALE DRAWING REFER TO ES0018 FOR FASTENER TIGHTENING GUIDELINES

TITLE: **BATTERY INSTL**

SHEET 1 OF 1 PART NO. **190864** REV

REF: 1 24-Jul-2015

*190864 *A