

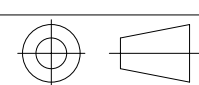
DRAWING NO.	MODEL	SHEET
189345-01	727K	1,2
189345-02	727D	1,2
189345-03	730J	1,2

RELEASE	REV/DATE	DWG NO	189345
REV ZONE	REVISION RECORD	DATE	DFT-ORIG

		727K	727D	730J
CABLE ASM-STARTER (RED)		141415-34-054	141415-34-054	141415-34-050
CABLE ASM-COACH BATTERY (YEL)		141415-52-020	141415-52-020	141415-52-014
CABLE ASM-COACH BATTERY GND (BLK)		133566-12-015	133566-12-015	133566-12-015
CABLE ASM-GENERATOR (GRN)		141415-42-030	141415-42-030	141415-42-030
CABLE ASM-GENERATOR GND (BLK)		133566-12-008	133566-12-008	133566-12-008
LEVELING SYSTEM POWER CABLE (BLU)	60M	141415-22-017	141415-22-017	141415-22-020
CABLE ASM INVERTER FUSE (ORG)	401	141415-64-011	141415-64-011	141415-64-011
CABLE ASM INVERTER (ORG)	401	141415-64-015	141415-64-015	141415-64-011
CABLE ASM INVERTER GND (BLK)	401	133566-12-011	133566-12-011	133566-12-011
INVERTER GND	401	139776-02-011	139776-02-011	139776-02-011
LEVELING SYSTEM GROUND CABLE (BLK)	60M	133566-12-007	133566-12-007	133566-12-007

- 401 INVERTER-DC/AC, 1000 WATT
- 60M HYDRAULIC LEVEL JACKS-AUTO
- 265 CODES/STANDARDS-CSA/CMVSS
- 1B1 CODES/STANDARDS USA

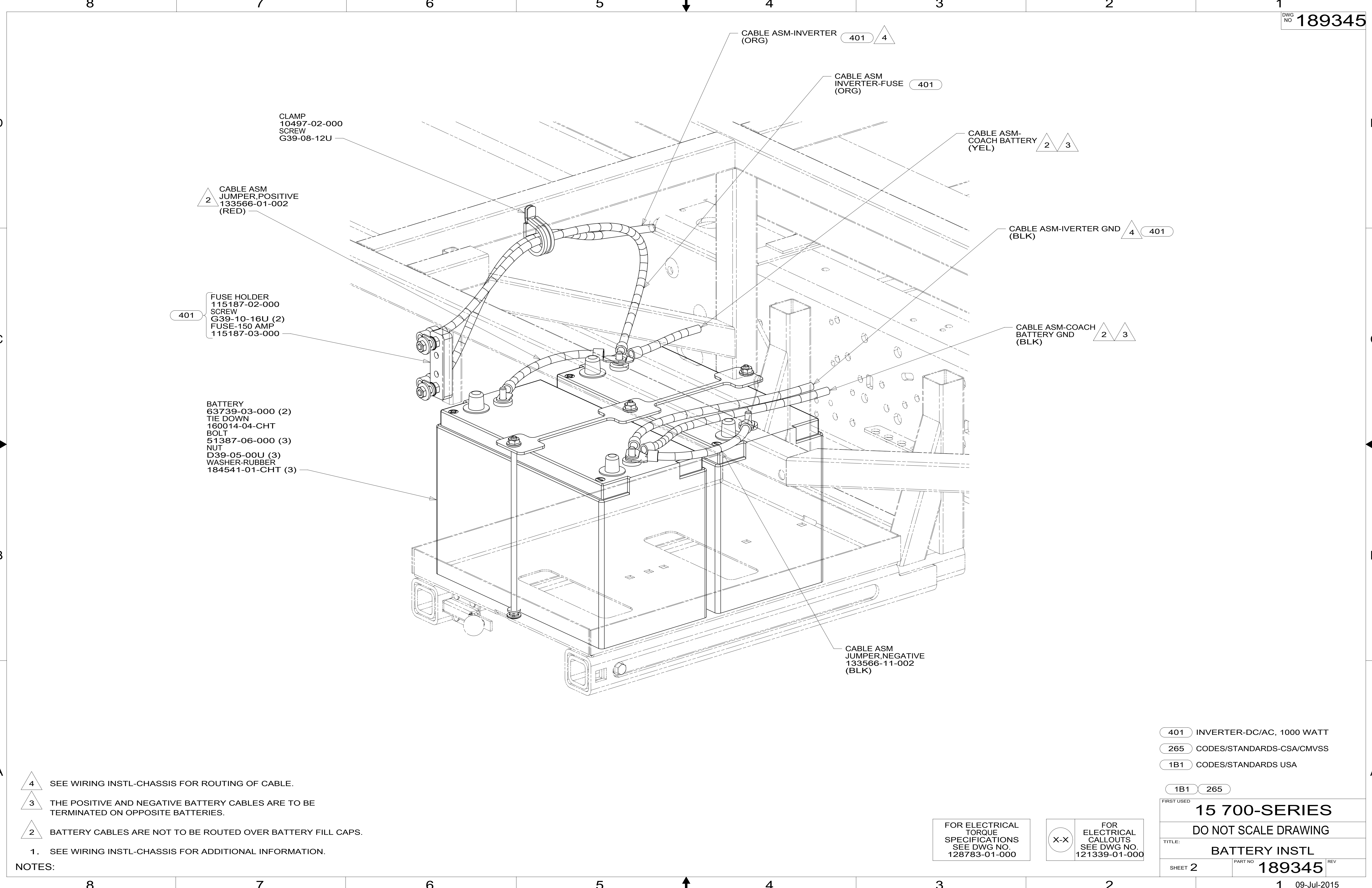

 COPYRIGHT 2014  
 WINNEBAGO  
 INDUSTRIES, INC.

DFT-ORIG	ORIG. DATE
CHKR	ALL DIMENSIONS ARE IN MILLIMETERS
P.E.	
M.E.	FIRST USED
DSNR	15 700-SERIES
UNSPECIFIED TOLERANCES ARE:	
WHOLE DIM (X)	: 3
ONE-PLACE (X.X)	: 1.5
TWO-PLACE (X.XX)	: 0.50
ANGLE	: 1°
THIRD ANGLE PROJECTION	
DO NOT SCALE DRAWING	REFER TO ES0018 FOR FASTENER TIGHTENING GUIDELINES
TITLE: <b>BATTERY INSTL</b>	
SHEET 1 OF 2	PART NO <b>189345</b> REV

FOR ELECTRICAL  
TORQUE  
SPECIFICATIONS  
SEE DWG NO.  
128783-01-000

FOR  
ELECTRICAL  
CALLOUTS  
SEE DWG NO.  
121339-01-000

\*189345 \*A



- 4 SEE WIRING INSTL-CHASSIS FOR ROUTING OF CABLE.
- 3 THE POSITIVE AND NEGATIVE BATTERY CABLES ARE TO BE TERMINATED ON OPPOSITE BATTERIES.
- 2 BATTERY CABLES ARE NOT TO BE ROUTED OVER BATTERY FILL CAPS.
1. SEE WIRING INSTL-CHASSIS FOR ADDITIONAL INFORMATION.

NOTES:

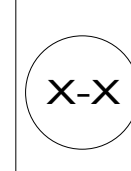
- 401 INVERTER-DC/AC, 1000 WATT
- 265 CODES/STANDARDS-CSA/CMVSS
- 1B1 CODES/STANDARDS USA

1B1 265

FIRST USED	
<b>15 700-SERIES</b>	
<b>DO NOT SCALE DRAWING</b>	
TITLE: <b>BATTERY INSTL</b>	
SHEET 2	PART NO <b>189345</b> REV

FOR ELECTRICAL TORQUE SPECIFICATIONS SEE DWG NO. 128783-01-000

FOR ELECTRICAL CALLOUTS SEE DWG NO. 121339-01-000



\*189345 \*A