

DRAWING NO.	MODEL	SHEETS
187889-01	---	1,2,4,5
187889-02	P40R	1,2,3,5
187889-03	P36M	1,2,4,5
187889-04	P42E	1,2,3,5

RELEASE	REV/DATE	DWG NO	187889
REV ZONE	REVISION RECORD	DATE	DTR-ORIG

		P34B	P40R	P36M	P42E
RED	1B1	136135-07-072	136135-07-090	136135-07-085	136135-07-090
	265	136136-07-072	136136-07-090	136136-07-085	136136-07-090
GRN	1B1	136135-08-072	136135-08-090	136135-08-085	136135-08-090
	265	136136-08-072	136136-08-090	136136-08-085	136136-08-090
LT BLU	1B1		136135-21-090		136135-21-090
	265		136136-21-090		136136-21-090
YEL	1B1	136131-05-075 ¹	136131-05-015 ¹	136131-05-054 ¹	136131-05-015 ¹
	265	136134-05-075 ¹	136134-05-015 ¹	136134-05-054 ¹	136134-05-015 ¹
GLD	1B1	136131-10-068	136131-10-070	136131-10-054 ¹	136131-10-070
	265	136134-10-068	136134-10-070	136134-10-054 ¹	136134-10-070
GLD-2	1B1	136131-20-068	136131-20-070	136131-20-054 ¹	136131-20-070
	265	136134-20-068	136134-20-070	136134-20-054 ¹	136134-20-070
WHT	1B1	136135-09-051	136135-09-058	136135-09-060 ²	136135-09-065
	265	136136-09-051	136136-09-058	136136-09-060 ²	136136-09-065
BLU	1B1	136131-02-200 ¹	136131-02-110 ¹	136131-02-085 ¹	136131-02-074 ¹
	265	136134-02-200 ¹	136134-02-110 ¹	136134-02-085 ¹	136134-02-074 ¹
BRN	1B1	136131-03-080 ¹	136131-03-210 ¹	136131-03-207 ¹	136131-03-157
	265	136134-03-080 ¹	136134-03-210 ¹	136134-03-207 ¹	136134-03-157

		P34B	P40R	P36M	P42E
PUR	1B1	136131-04-202 ¹	136131-04-095 ¹	136131-04-165 ¹	136131-04-100
	265	136134-04-202 ¹	136134-04-095 ¹	136134-04-165 ¹	136134-04-100
ORG	1B1	136131-16-126	136131-16-120	136131-16-170	136131-16-140
	265	136134-16-126	136134-16-120	136134-16-170	136134-16-140
BLK	1B1	136131-06-075 ¹	136131-06-095 ¹	136131-06-054 ¹	136131-06-040 ¹
	265	136134-06-075 ¹	136134-06-095 ¹	136134-06-054 ¹	136134-06-040 ¹
GRY	1B1		136131-15-015 ¹	136131-15-060 ^{3 2}	136131-15-015 ¹
	265		136134-15-015 ¹	136134-15-060 ^{3 2}	136134-15-015 ¹
GRY-2	1B1			136131-23-054 ¹	
	265			136134-23-054 ¹	
INVERTER CHARGER MAIN	1B1	136137-01-065	136137-01-053	136137-01-058	136137-01-053
	265	136138-01-065	136138-01-053	136138-01-058	136138-01-053
INVERTER CHARGER SUB MAIN		136137-01-065	136137-01-053	136137-01-058	136137-01-053
		136138-01-065	136138-01-053	136138-01-058	136138-01-053
CABLE ASM-MAIN,6 AWG		176841-01-030	176841-01-025	176841-01-025	176841-01-045
MAIN GROUND		136145-01-058	136145-01-020	136145-01-065	136145-01-050
ATS GROUND		136145-01-052	136145-01-010	136145-01-050	136145-01-025
INVERTER GROUND		136145-04-006	136145-04-040	136145-04-006	136145-04-025
GENERATOR CABLE ASM		136148-02-104	136148-02-120	136148-02-115	136148-02-088

14C
154

1B2

- 154 FIREPLACE - BEDROOM
- 1B2 WTR HTR-10GAL/ELEC/LP/MTRAIID
- 14C FIREPLACE-ELECTRIC
- 265 CODES/STANDARDS-CSA/CMVSS
- 1B1 CODES/STANDARDS USA

1B1 265

WINNEBAGO COPYRIGHT 2014 WINNEBAGO INDUSTRIES, INC.

UNSPECIFIED TOLERANCES ARE:
 WHOLE DIM (X) : 3
 ONE-PLACE (X.X) : 1.5
 TWO-PLACE (X.XX) : 0.50
 ANGLE : 1'

THIRD ANGLE PROJECTION

DO NOT SCALE DRAWING REFER TO ES0018 FOR FASTENER TIGHTENING GUIDELINES

TITLE: **LOAD CENTER/ATS ASM**

SHEET **1** OF **5** PART NO **187889** REV

REF: **1** 06-Aug-2015

³ SEE DETAIL EC FOR CONNECTOR INSTALLATION.
² SEE DETAIL BD FOR CONNECTOR INSTALLATION.
¹ SEE DETAIL BA FOR CONNECTOR INSTALLATION.

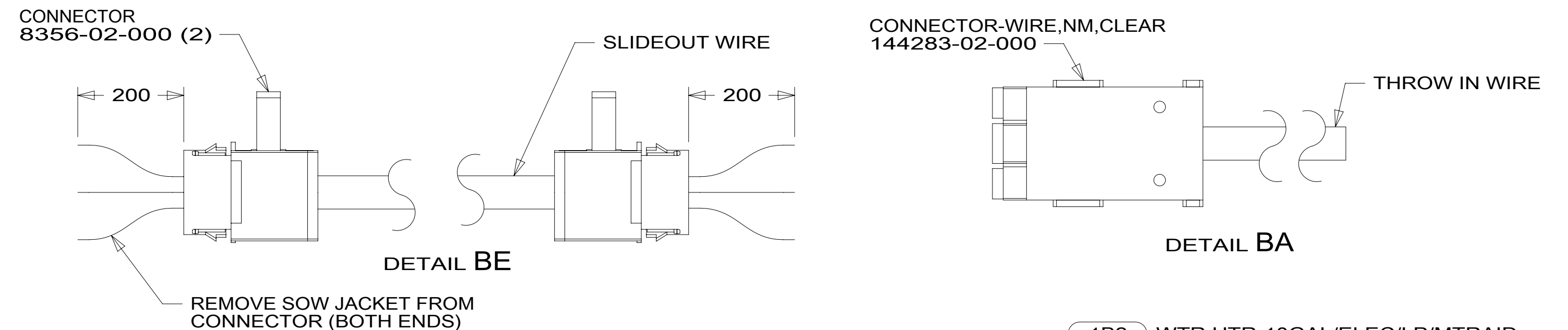
FOR ELECTRICAL TORQUE SPECIFICATIONS SEE DWG NO. 128783-01-000

FOR ELECTRICAL CALLOUTS SEE DWG NO. 121339-01-000

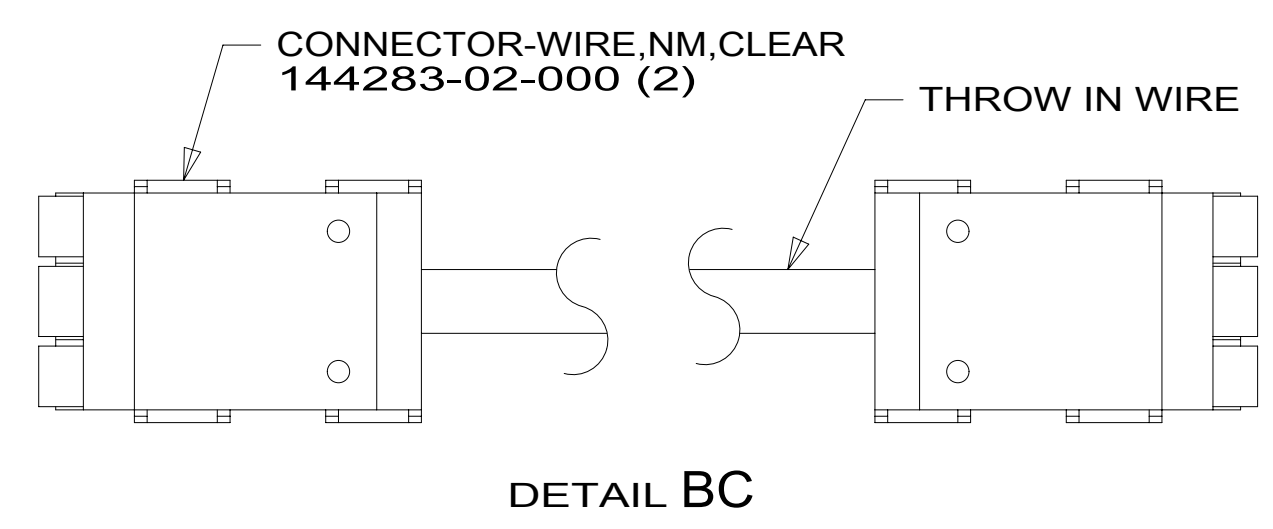
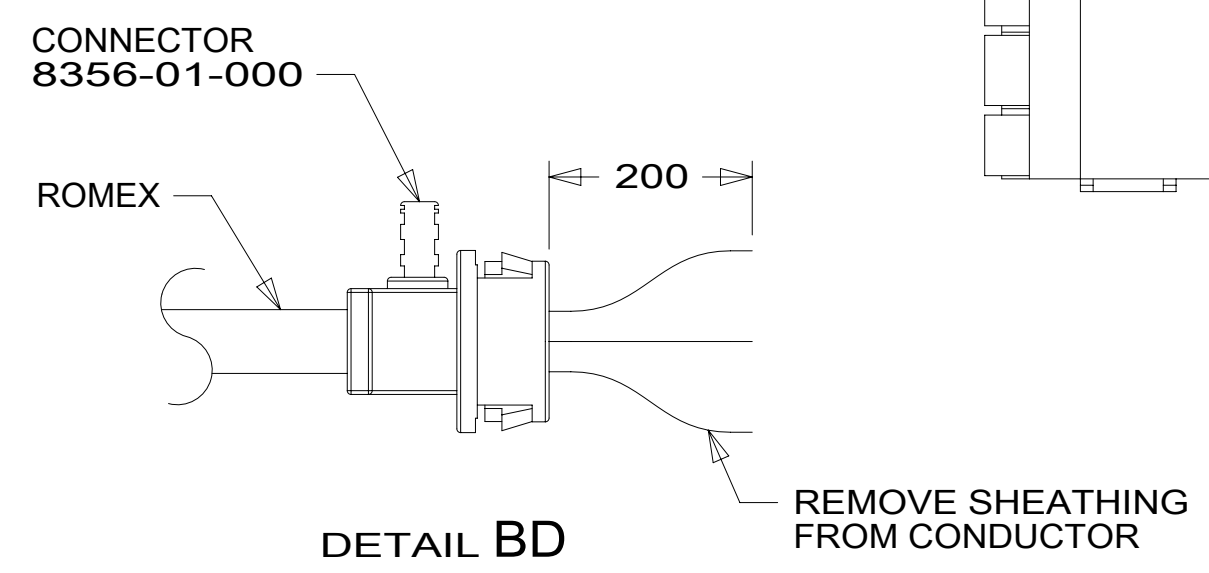
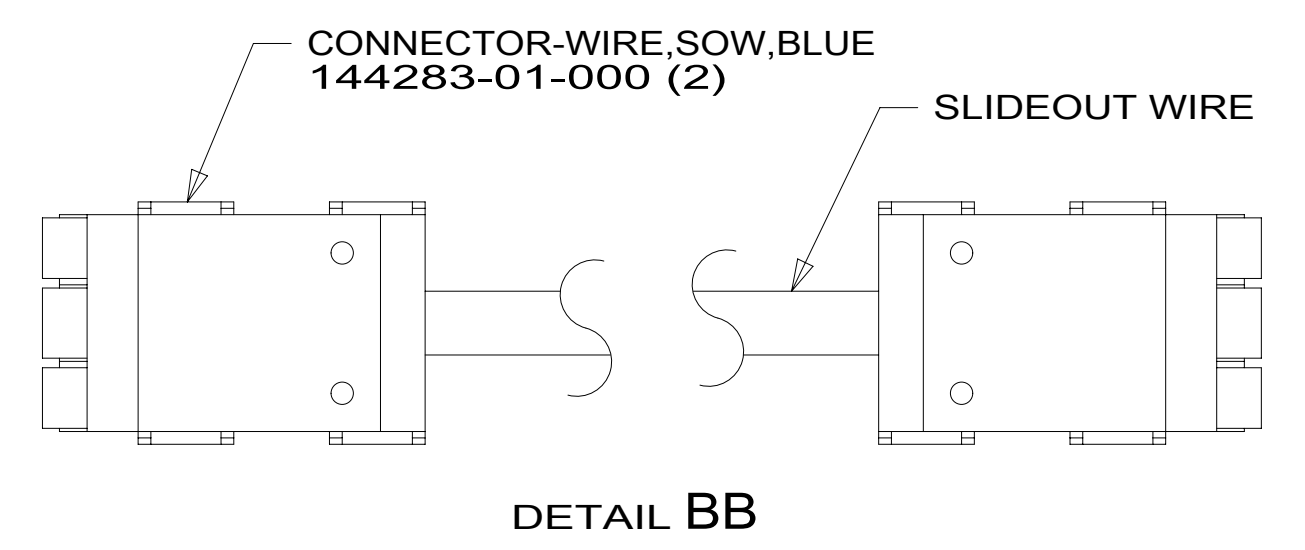
187889

		P34B	P40R	P36M	P42E
THROW IN WIRE #1	1B1	136131-02-006	136131-02-035	136131-05-032	136131-02-110
	265	136134-02-006	136134-02-035	136134-05-032	136134-02-110
THROW IN WIRE #2	1B1	136131-04-075	136131-02-027	136131-04-013	136131-04-010
	265	136134-04-075	136134-02-027	136134-04-013	136134-04-010
THROW IN WIRE #3	1B1	136131-05-025	136131-04-012	136131-02-075	136131-05-023
	265	136134-05-025	136134-04-012	136134-02-075	136134-05-023
THROW IN WIRE #4	1B1	136131-04-045	136131-04-040	136131-10-040	136131-04-020
	265	136134-04-045	136134-04-040	136134-10-040	136134-04-020
THROW IN WIRE #5	1B1	136131-02-009	136131-04-085	136131-20-040	136131-04-010
	265	136134-02-009	136134-04-085	136134-20-040	136134-04-010
THROW IN WIRE #6	1B1		136131-15-035 14C	136131-02-086	136131-02-030
	265		136134-15-035 14C	136134-02-086	136134-02-030
THROW IN WIRE #7	1B1			136131-04-010	136131-04-040
	265			136134-04-010	136134-04-040
THROW IN WIRE #8	1B1			136135-09-055 1B2	136131-02-030
	265			136136-09-055 1B2	136134-02-030
THROW IN WIRE #9	1B1			136131-15-010 14C	
	265			136134-15-010 14C	
THROW IN WIRE #10	1B1				
	265				
THROW IN WIRE #11	1B1				
	265				
THROW IN WIRE #12	1B1				
	265				

	P34B	P40R	P36M	P42E
SLIDEOUT #1 WIRE #1	136151-04-026	136151-02-020	136151-03-027	136151-02-058
SLIDEOUT #1 WIRE #2	136151-05-026	136151-06-020		136151-06-058
SLIDEOUT #1 WIRE #3	136151-03-026			
SLIDEOUT #1 WIRE #4	136151-06-026			
SLIDEOUT #2 WIRE #1		136151-04-012		136151-04-015
SLIDEOUT #2 WIRE #2				
SLIDEOUT #3 WIRE #1	136151-02-016	136151-03-055		136151-04-042
SLIDEOUT #3 WIRE #2		136151-15-055		136151-15-042 14C
SLIDEOUT #3 WIRE #3		136151-04-055		136151-05-042
SLIDEOUT #3 WIRE #4		136151-05-055		
SLIDEOUT #4 WIRE #1	136151-02-023		136151-05-025	
SLIDEOUT #4 WIRE #2			136151-06-025	
SLIDEOUT #4 WIRE #3			136151-02-025	
SLIDEOUT #4 WIRE #4			136151-04-025	
SLIDEOUT #4 WIRE #5			136151-10-025	
SLIDEOUT #4 WIRE #6			136151-20-025	
SLIDEOUT #4 WIRE #7			136152-09-028 1B2	
SLIDEOUT #4 WIRE #8			136151-23-025 154	



- NOTES:
- SEE DETAIL EC FOR CONNECTOR INSTALLATION.
 - SEE DETAIL BD FOR CONNECTOR INSTALLATION.
 - SEE DETAIL BE FOR CONNECTOR INSTALLATION.
 - SEE DETAIL BC FOR CONNECTOR INSTALLATION.
 - SEE DETAIL BB FOR CONNECTOR INSTALLATION.
 - SEE DETAIL BA FOR CONNECTOR INSTALLATION.



FOR ELECTRICAL TORQUE SPECIFICATIONS SEE DWG NO. 128783-01-000

FOR ELECTRICAL CALLOUTS SEE DWG NO. 121339-01-000

- WTR HTR-10GAL/ELEC/LP/MTRAIID
- FIREPLACE - BEDROOM
- REFRIGERATOR/FREEZER PORTABL
- TV-40"-(FRONT) COLOR, STEREO
- FIREPLACE-ELECTRIC
- CODES/STANDARDS-CSA/CMVSS
- CODES/STANDARDS-USA

1B1 265

FIRST USED

15 P-SERIES

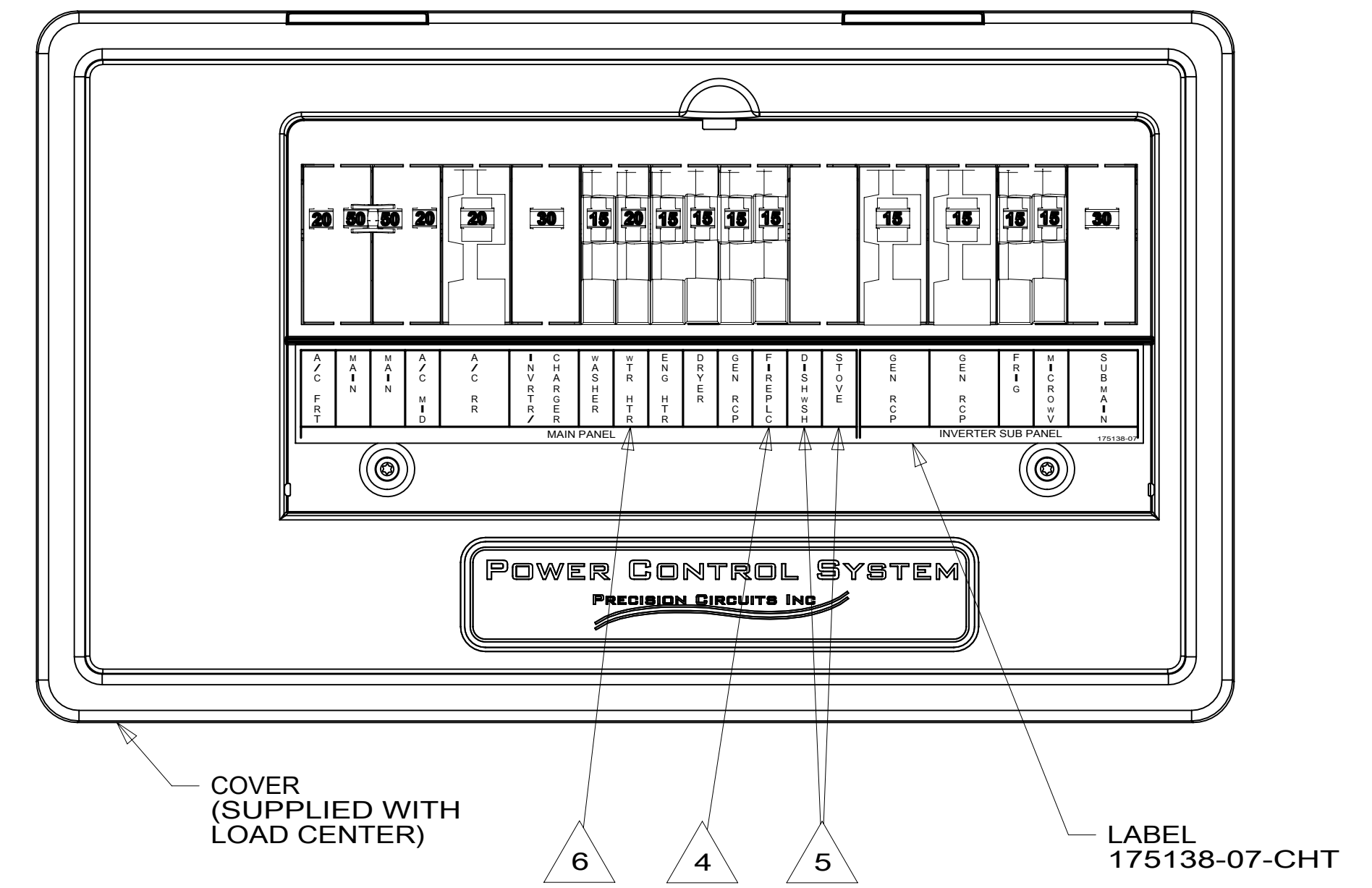
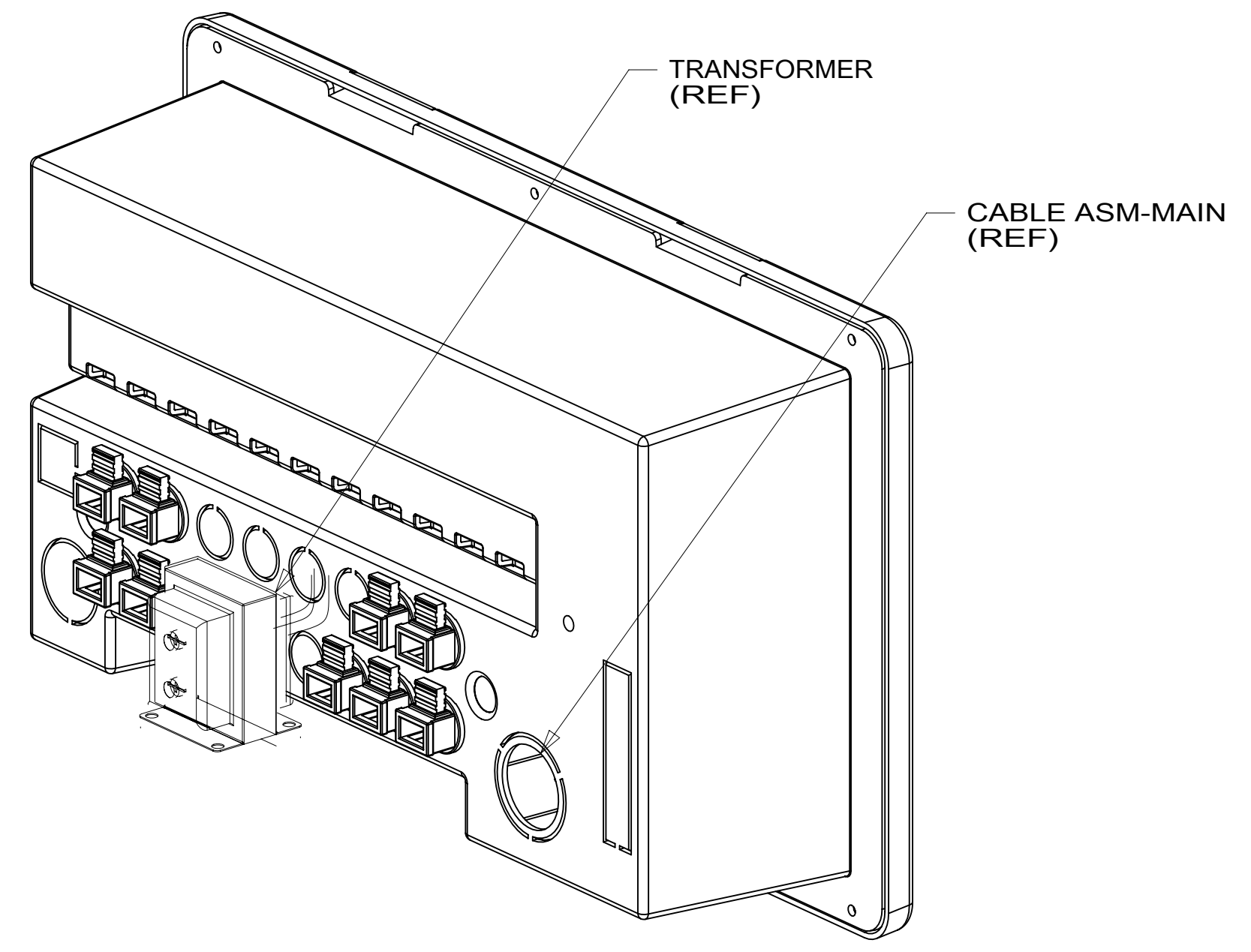
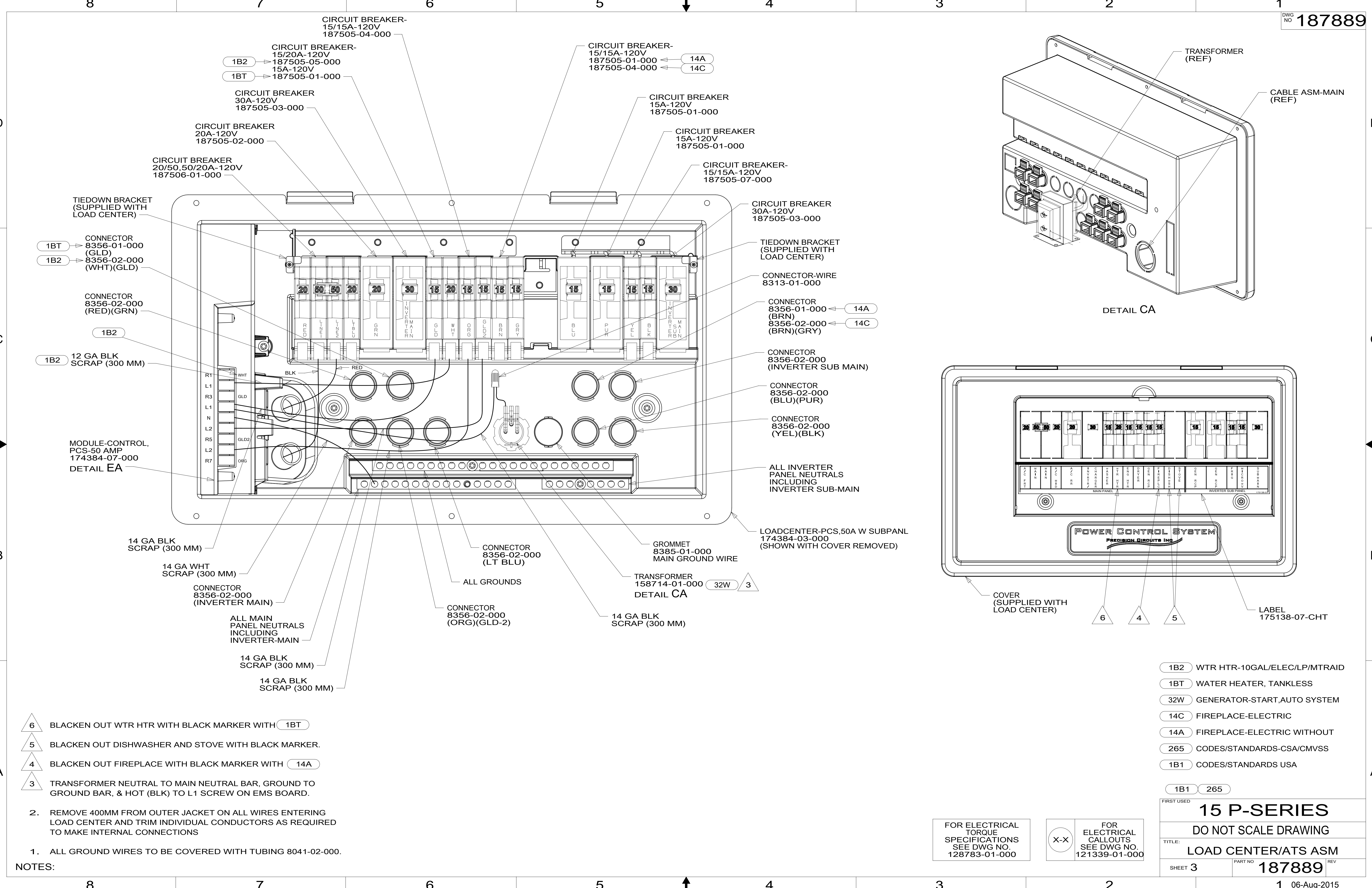
DO NOT SCALE DRAWING

TITLE: **LOAD CENTER/ATS ASM**

SHEET 2 PART NO **187889** REV

1 06-Aug-2015

* 187889 *



- 6 BLACKEN OUT WTR HTR WITH BLACK MARKER WITH 1BT
- 5 BLACKEN OUT DISHWASHER AND STOVE WITH BLACK MARKER.
- 4 BLACKEN OUT FIREPLACE WITH BLACK MARKER WITH 14A
- 3 TRANSFORMER NEUTRAL TO MAIN NEUTRAL BAR, GROUND TO GROUND BAR, & HOT (BLK) TO L1 SCREW ON EMS BOARD.

2. REMOVE 400MM FROM OUTER JACKET ON ALL WIRES ENTERING LOAD CENTER AND TRIM INDIVIDUAL CONDUCTORS AS REQUIRED TO MAKE INTERNAL CONNECTIONS
1. ALL GROUND WIRES TO BE COVERED WITH TUBING 8041-02-000.

NOTES:

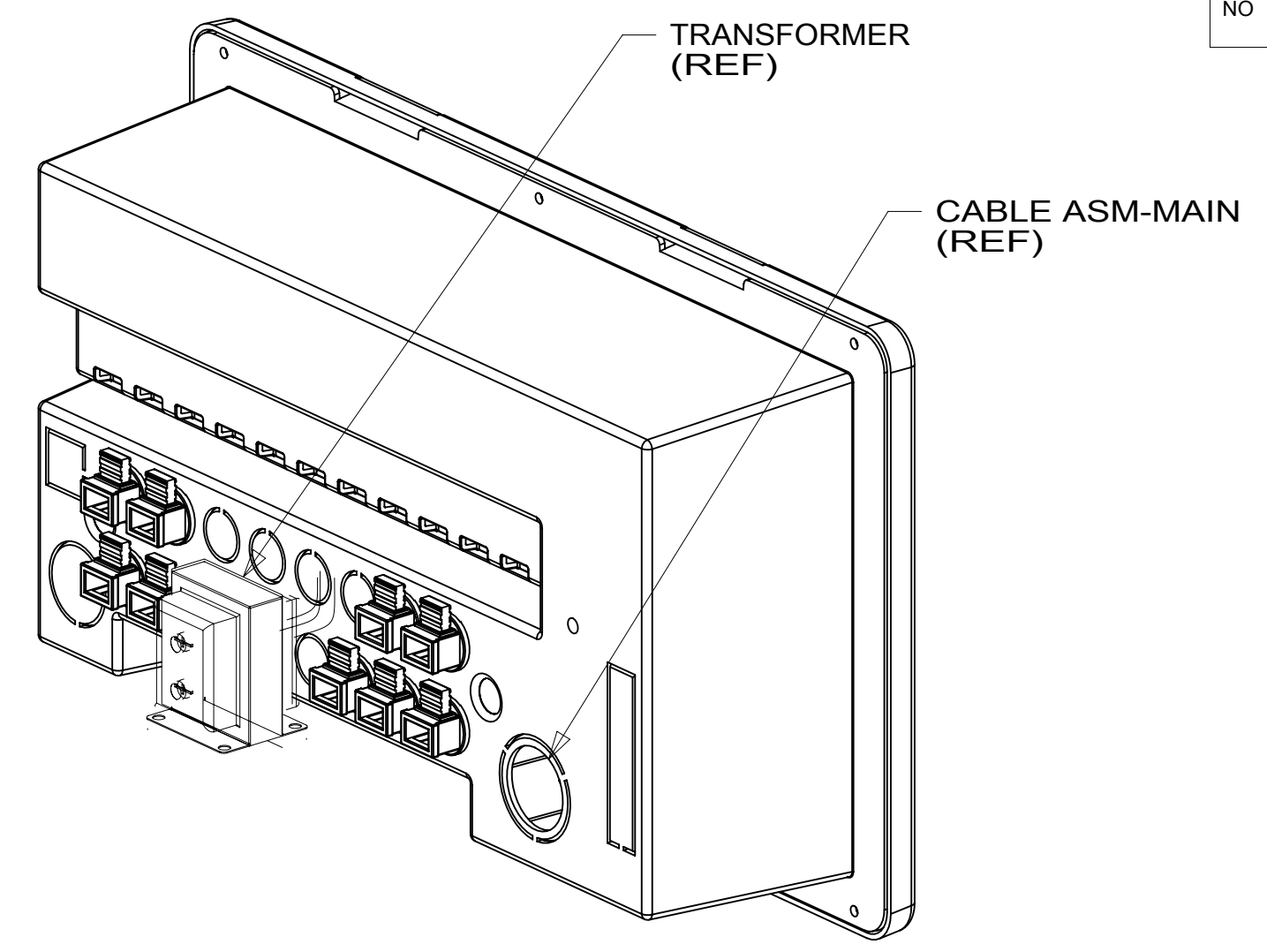
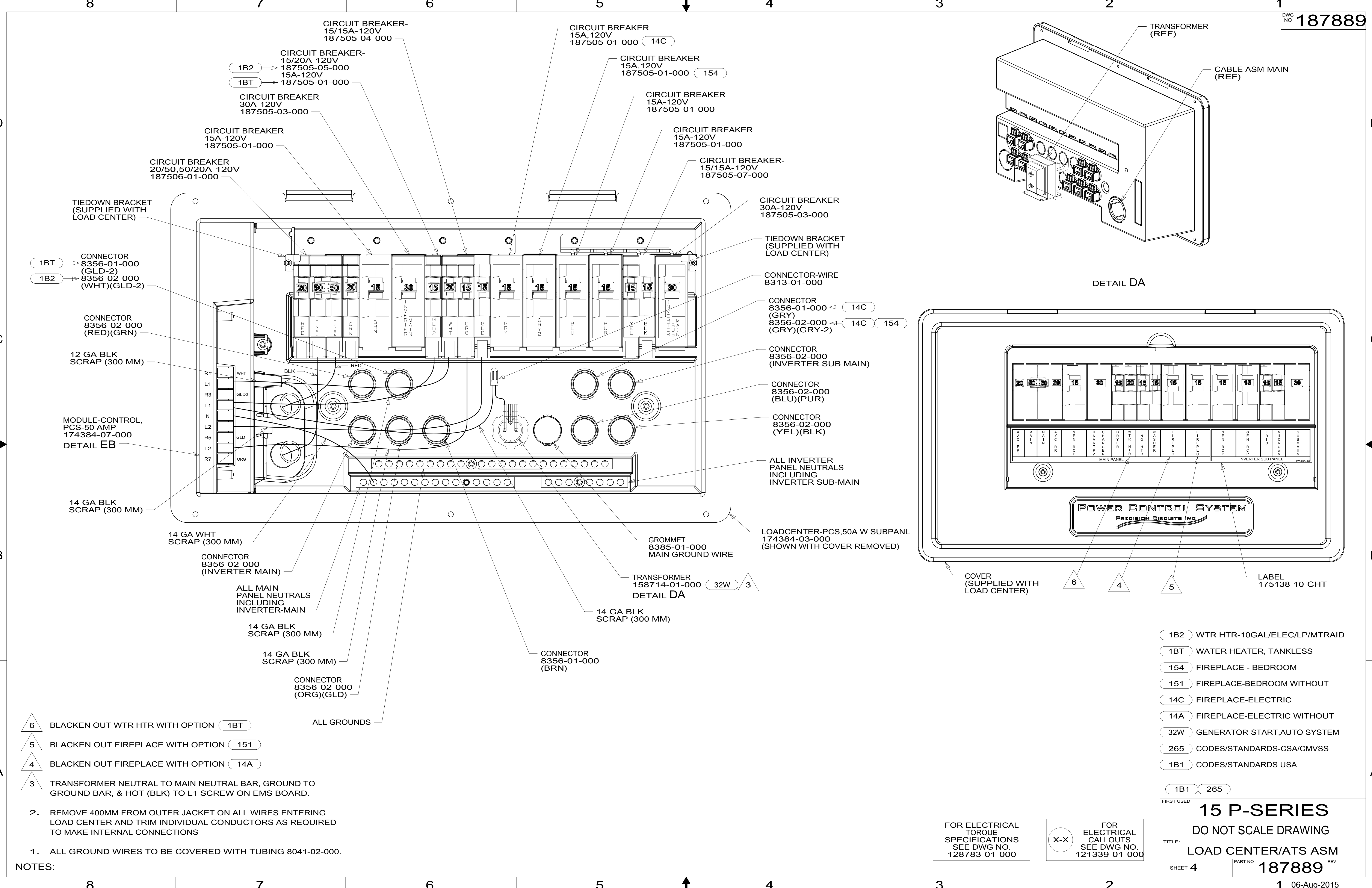
- 1B2 WTR HTR-10GAL/ELEC/LP/MTR/RAID
- 1BT WATER HEATER, TANKLESS
- 32W GENERATOR-START,AUTO SYSTEM
- 14C FIREPLACE-ELECTRIC
- 14A FIREPLACE-ELECTRIC WITHOUT
- 265 CODES/STANDARDS-CSA/CMVSS
- 1B1 CODES/STANDARDS USA

1B1	265
FIRST USED	
15 P-SERIES	
DO NOT SCALE DRAWING	
TITLE: LOAD CENTER/ATS ASM	
SHEET 3	PART NO 187889 REV

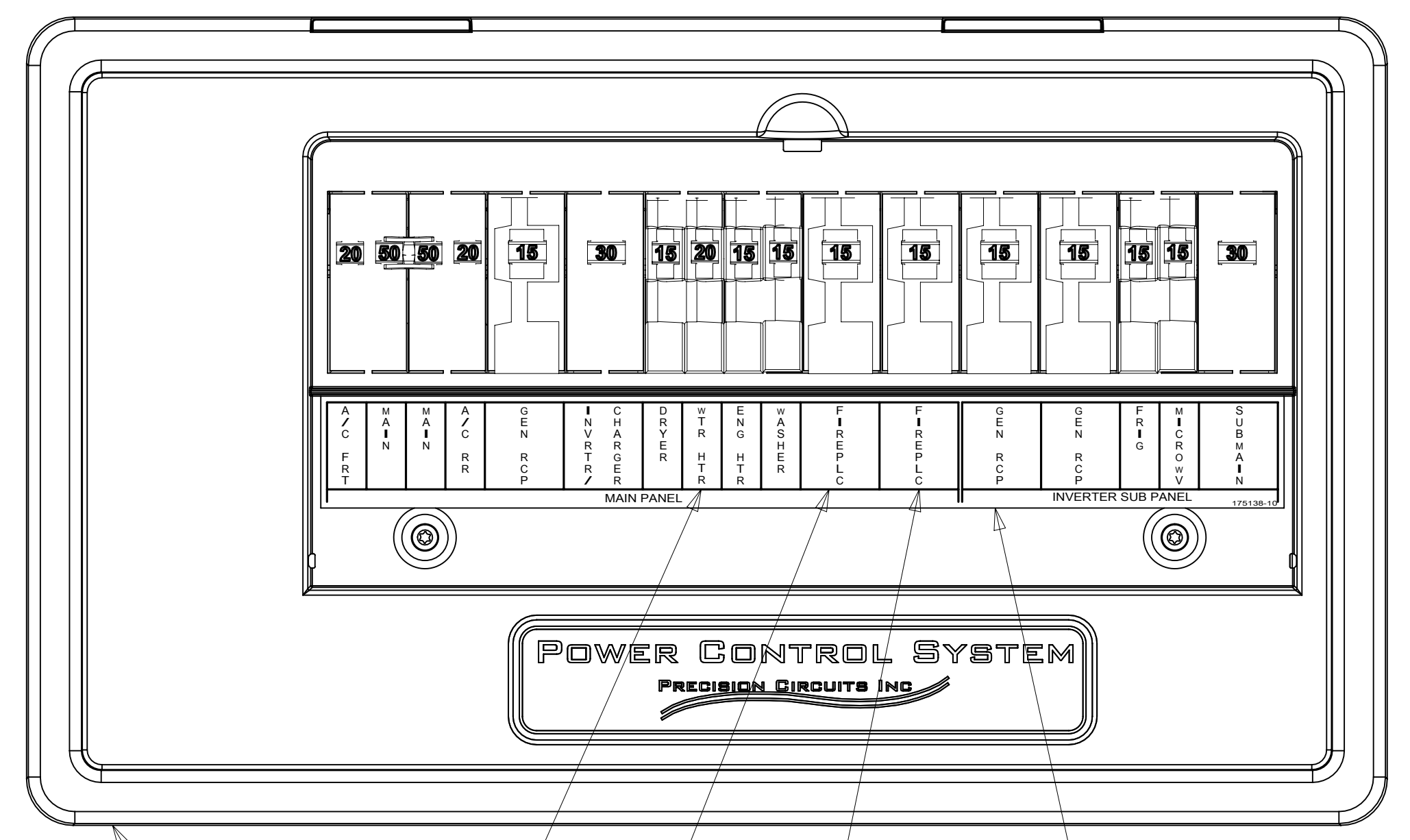
FOR ELECTRICAL TORQUE SPECIFICATIONS SEE DWG NO. 128783-01-000

FOR ELECTRICAL CALLOUTS SEE DWG NO. 121339-01-000

187889



DETAIL DA



COVER (SUPPLIED WITH LOAD CENTER)

LABEL 175138-10-CHT

- 6 BLACKEN OUT WTR HTR WITH OPTION 1BT
- 5 BLACKEN OUT FIREPLACE WITH OPTION 151
- 4 BLACKEN OUT FIREPLACE WITH OPTION 14A
- 3 TRANSFORMER NEUTRAL TO MAIN NEUTRAL BAR, GROUND TO GROUND BAR, & HOT (BLK) TO L1 SCREW ON EMS BOARD.

2. REMOVE 400MM FROM OUTER JACKET ON ALL WIRES ENTERING LOAD CENTER AND TRIM INDIVIDUAL CONDUCTORS AS REQUIRED TO MAKE INTERNAL CONNECTIONS
1. ALL GROUND WIRES TO BE COVERED WITH TUBING 8041-02-000.

NOTES:

- 1B2 WTR HTR-10GAL/ELEC/LP/MTRAITD
- 1BT WATER HEATER, TANKLESS
- 154 FIREPLACE - BEDROOM
- 151 FIREPLACE-BEDROOM WITHOUT
- 14C FIREPLACE-ELECTRIC
- 14A FIREPLACE-ELECTRIC WITHOUT
- 32W GENERATOR-START,AUTO SYSTEM
- 265 CODES/STANDARDS-CSA/CMVSS
- 1B1 CODES/STANDARDS USA

1B1 265

FIRST USED

15 P-SERIES

DO NOT SCALE DRAWING

TITLE: **LOAD CENTER/ATS ASM**

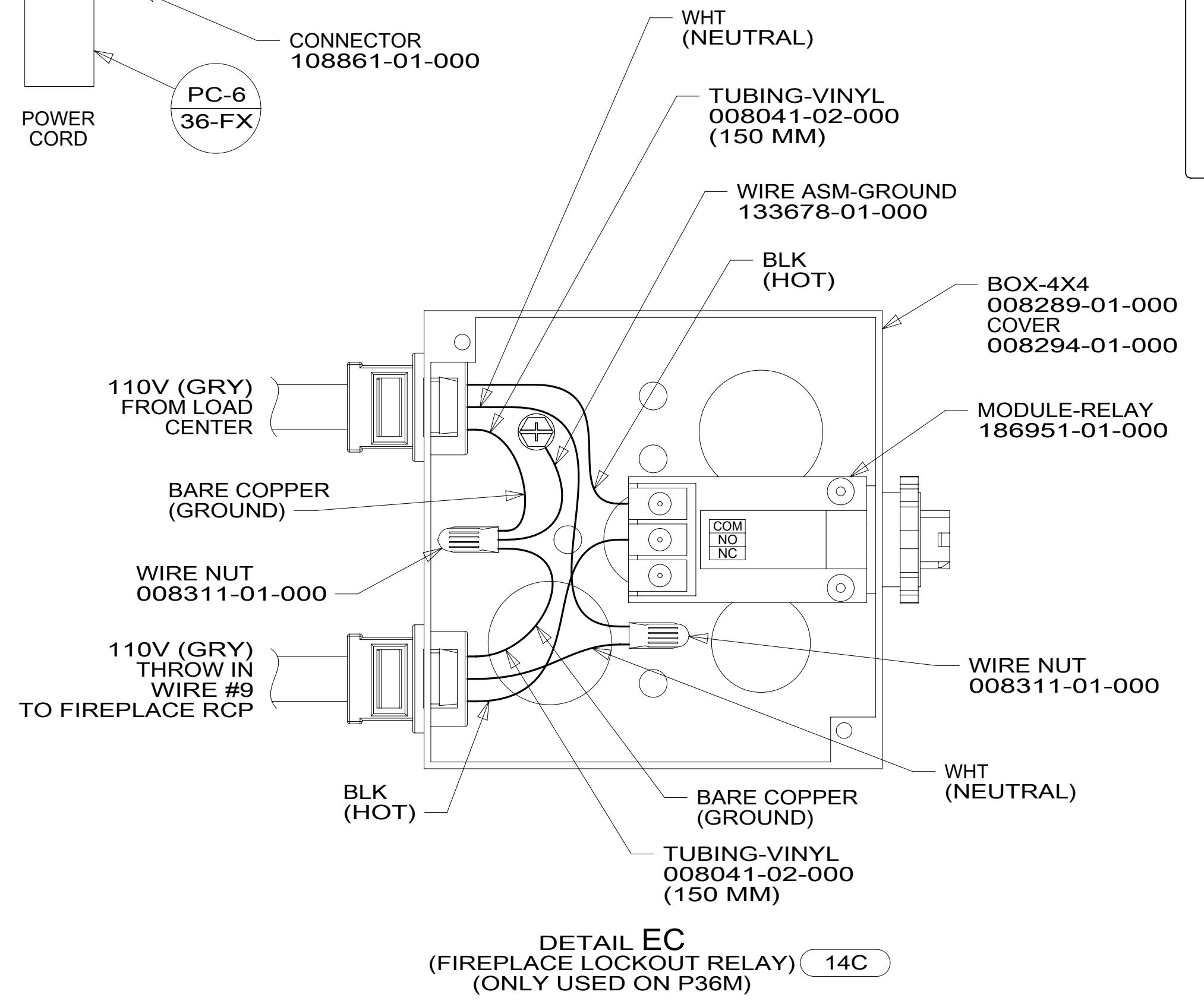
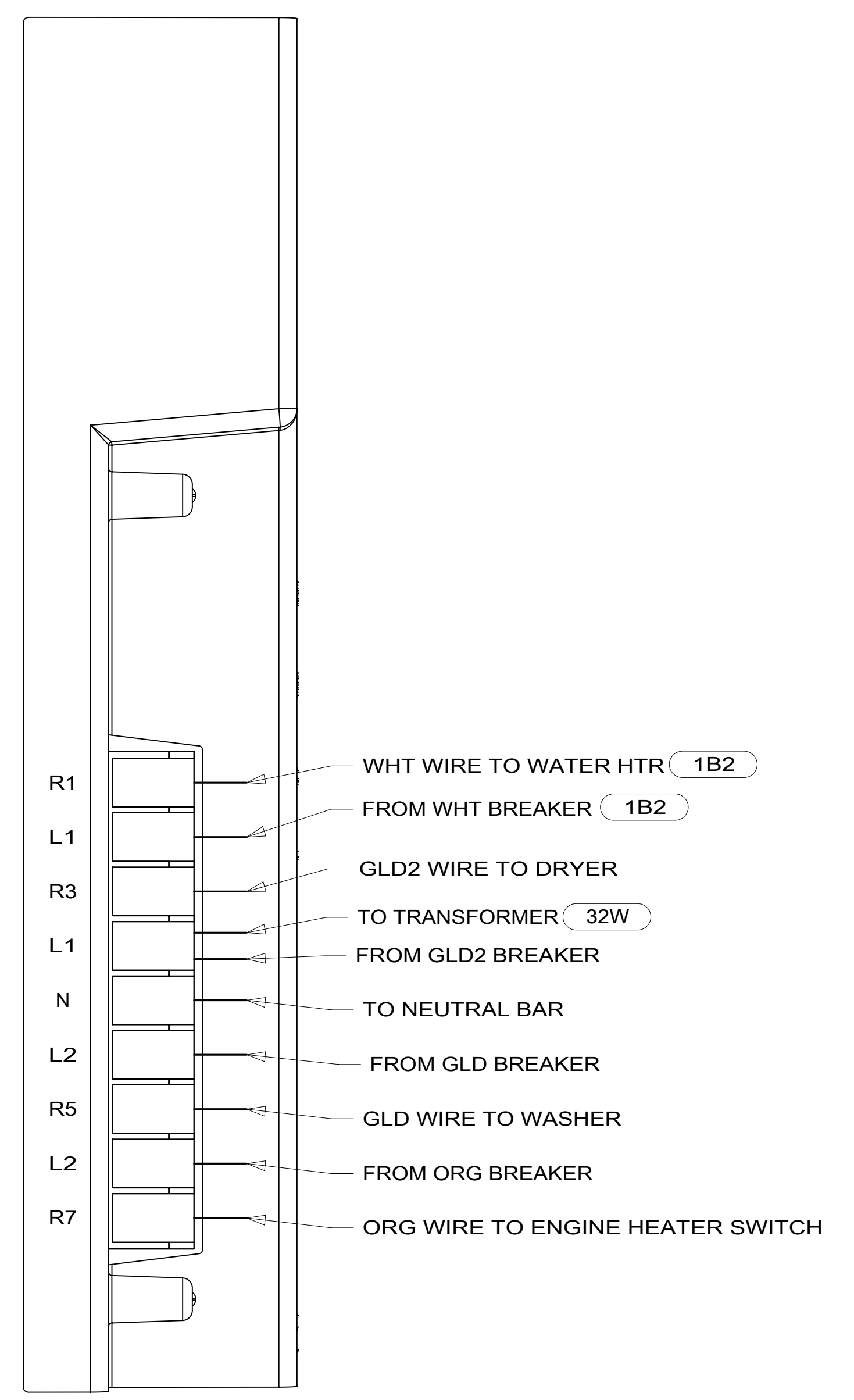
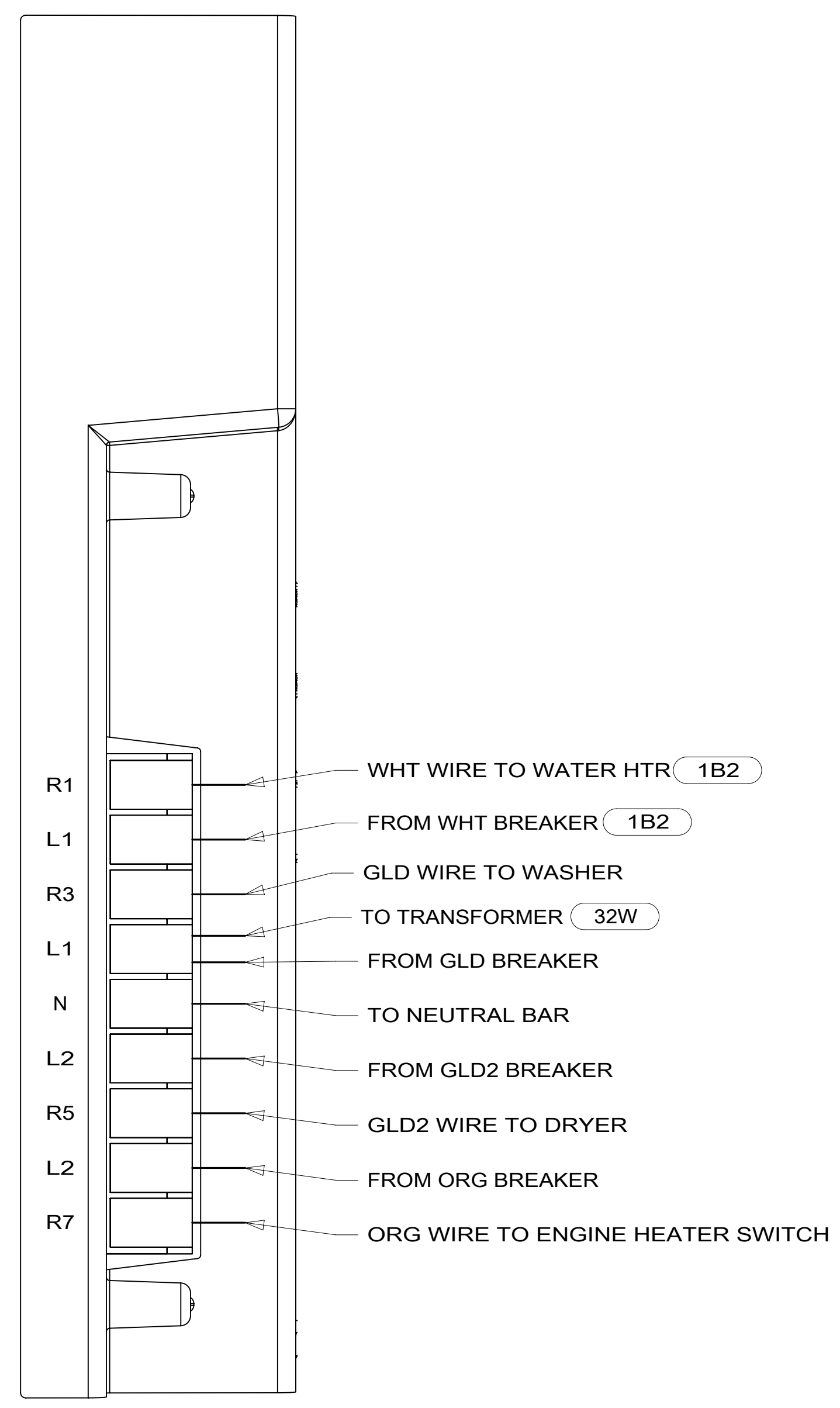
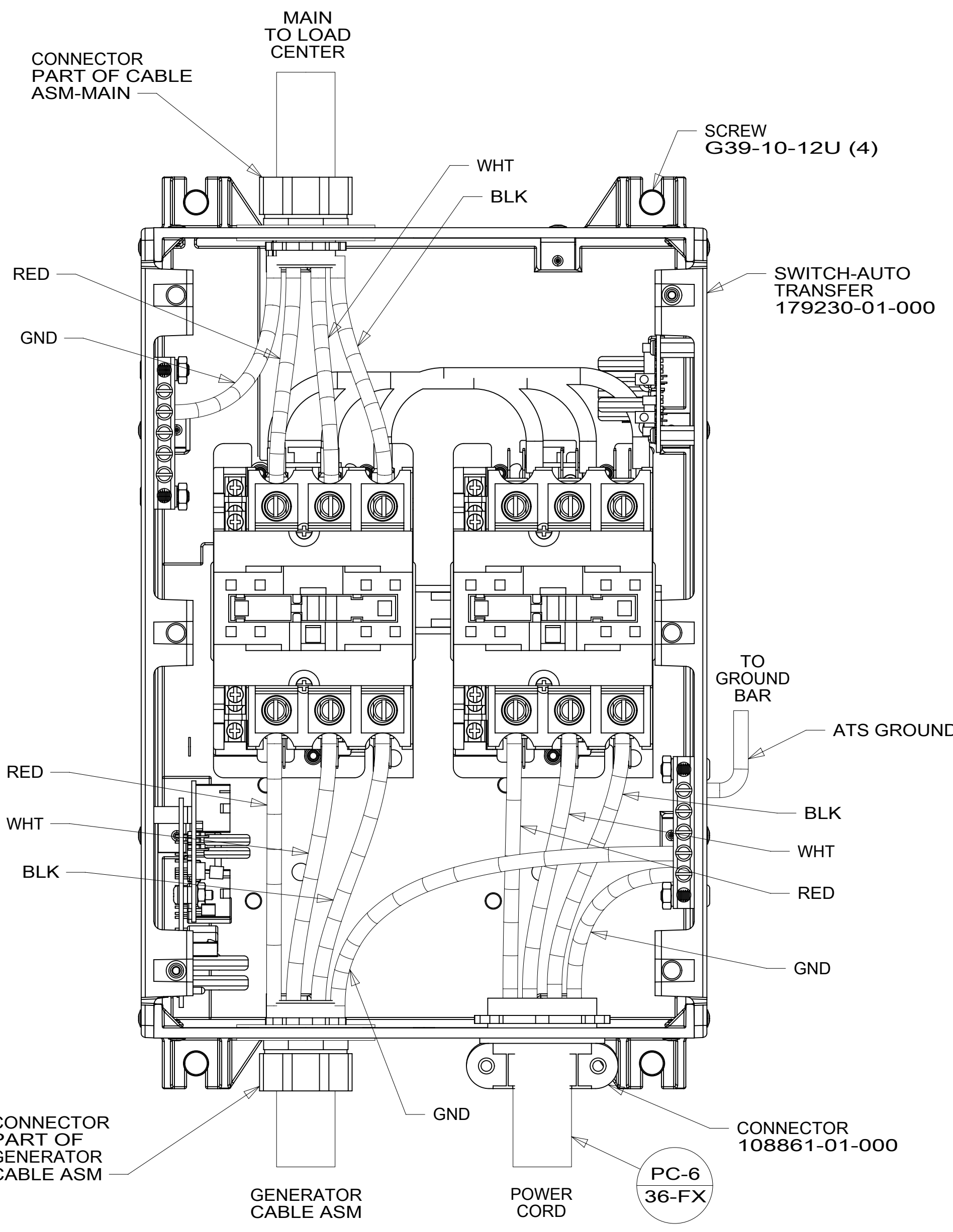
SHEET 4 PART NO **187889** REV

1 06-Aug-2015

FOR ELECTRICAL TORQUE SPECIFICATIONS SEE DWG NO. 128783-01-000

FOR ELECTRICAL CALLOUTS SEE DWG NO. 121339-01-000

187889



- 14C FIREPLACE-ELECTRIC
- 1B2 WTR HTR-10GAL/ELEC/LP/MTRAIID
- 32W GENERATOR-START,AUTO SYSTEM
- 265 CODES/STANDARDS-CSA/CMVSS
- 1B1 CODES/STANDARDS USA

15 P-SERIES
DO NOT SCALE DRAWING

TITLE: LOAD CENTER/ATS ASM

SHEET 5 PART NO 187889 REV

06-Aug-2015

FOR ELECTRICAL TORQUE SPECIFICATIONS SEE DWG NO. 128783-01-000

FOR ELECTRICAL CALLOUTS SEE DWG NO. 121339-01-000

* 187889 *