

DRAWING NO.	MODEL	SHEETS
187789-01	A26A	1,2,3,8
187789-02	A27B	1,4,5,8
187789-03	A31C	1,6,7,8

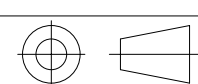
	A26A	A27B	A31C
CABLE ASM-CHASSIS GND EXT (BLK)	133566-12-030	133566-12-011	133566-12-030
CABLE ASM-CHASSIS BATTERY DISCONNECT SUPPLY (RED)	141415-32-051	141415-32-028	141415-32-062
CABLE ASM-COACH BATTERY DISCONNECT SUPPLY (YEL)	141416-52-054	141416-52-023	141416-52-036
CABLE ASM-COACH BATTERY GND (BLK)	133567-12-007	133567-12-007	133567-12-008
CABLE ASM-CHASSIS BATTERY DISCONNECT RETURN (PUR)	141415-12-028	141415-12-027	141415-12-034
CABLE ASM-GENERATOR (GRN)	141415-42-035	141415-42-065	141415-42-100
CABLE ASM-GENERATOR GND (BLK)	133566-12-008	133566-12-008	
LEVELING SYSTEM POWER CABLE (BLU)	141415-29-012	141415-29-012	141415-29-012
LEVELING SYSTEM GND CABLE (BLK)	133566-12-008	133566-12-008	133566-12-008
CABLE ASM-STARTER (RED)	141416-32-031	141416-32-010	141416-32-034
CABLE ASM-COACH BATTERY FUSE (YEL)	141416-52-004	141416-52-003	141416-52-004
CABLE ASM-CHASSIS BATTERY FUSE (RED)	141415-32-003	141415-32-003	141415-32-003
CABLE ASM-FROM COACH BATTERY TO INVERTER FUSE (ORG)			175207-62-004
CABLE ASM-FROM INVERTER FUSE TO INVERTER BATTERY DISCONNECT (ORG)			175207-62-016
CABLE ASM-FROM BATTERY DISCONNECT TO POSITIVE POST ON INVERTER (ORG)			175207-62-006
CABLE ASM-FROM COACH BATTERY TO INVERTER NEGATIVE TERMINAL (BLK)			175211-01-018
CABLE ASM-TEMPERATURE			
CABLE ASM-JUMPER BETWEEN POSITIVE POSTS ON COACH BATTERY (YEL)			141417-52-004 141417-51-002 ← 15L
CABLE ASM-JUMPER BETWEEN NEGATIVE POSTS ON COACH BATTERY (BLK)			133568-12-004 133568-11-002 ← 15L
CABLE ASM-INVERTER GROUND (GRN)			136145-01-020

RELEASE REV/DATE A DWG NO. 187789  
 REV ZONE REVISION RECORD DATE DFR-ORIG

- 15L RESIDENTIAL REFRIGERATOR PKG
- 265 CODES/STANDARDS-CSA/CMVSS
- 1B1 CODES/STANDARDS USA

1B1 265



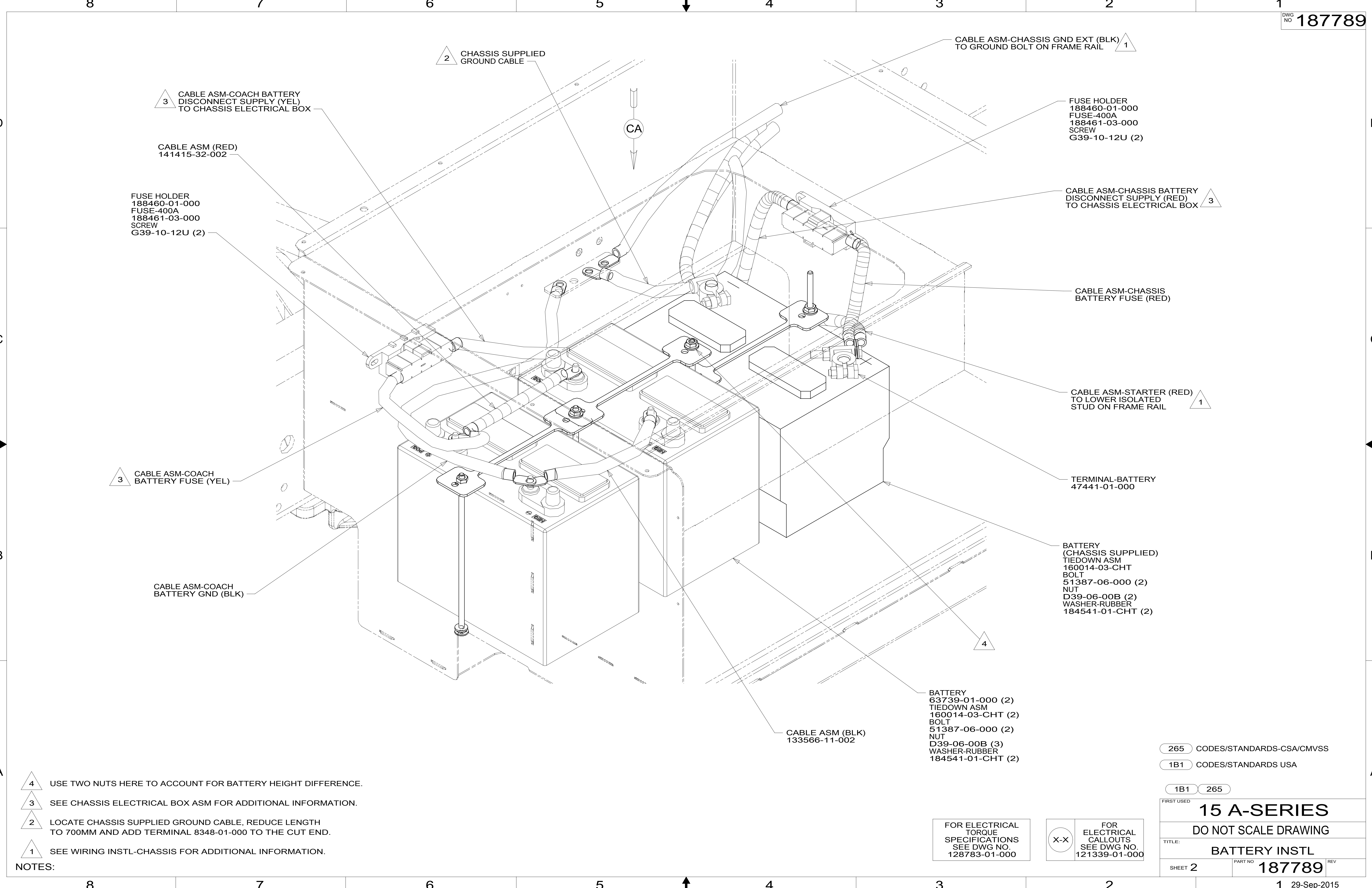
DFTR	ORIG. DATE
CHKR	ALL DIMENSIONS ARE IN MILLIMETERS
P.E.	
M.E.	FIRST USED
DSNR	15 A-SERIES
UNSPECIFIED TOLERANCES ARE:	
WHOLE DIM (X)	: 3
ONE-PLACE (X.X)	: 1.5
TWO-PLACE (X.XX)	: 0.50
ANGLE	: 1°
THIRD ANGLE PROJECTION	
DO NOT SCALE DRAWING	REFER TO ES0018 FOR FASTENER TIGHTENING GUIDELINES
TITLE: BATTERY INSTL	
SHEET 1 OF 8	PART NO. 187789 REV

FOR ELECTRICAL TORQUE SPECIFICATIONS SEE DWG NO. 128783-01-000

FOR ELECTRICAL CALLOUTS SEE DWG NO. 121339-01-000

NOTES:  CABLE ASM-TEMPERATURE IS PART OF WIRE ASM-CHASSIS.

\*187789\*



- 3 CABLE ASM-COACH BATTERY DISCONNECT SUPPLY (YEL) TO CHASSIS ELECTRICAL BOX
- 2 CHASSIS SUPPLIED GROUND CABLE
- 1 CABLE ASM-CHASSIS GND EXT (BLK) TO GROUND BOLT ON FRAME RAIL
- FUSE HOLDER 188460-01-000 FUSE-400A 188461-03-000 SCREW G39-10-12U (2)
- CABLE ASM (RED) 141415-32-002
- FUSE HOLDER 188460-01-000 FUSE-400A 188461-03-000 SCREW G39-10-12U (2)
- 3 CABLE ASM-CHASSIS BATTERY DISCONNECT SUPPLY (RED) TO CHASSIS ELECTRICAL BOX
- CABLE ASM-CHASSIS BATTERY FUSE (RED)
- 1 CABLE ASM-STARTER (RED) TO LOWER ISOLATED STUD ON FRAME RAIL
- 3 CABLE ASM-COACH BATTERY FUSE (YEL)
- 4 BATTERY (CHASSIS SUPPLIED) TIEDOWN ASM 160014-03-CHT BOLT 51387-06-000 (2) NUT D39-06-00B (2) WASHER-RUBBER 184541-01-CHT (2)
- TERMINAL-BATTERY 47441-01-000
- 3 CABLE ASM-COACH BATTERY GND (BLK)
- 4 BATTERY 63739-01-000 (2) TIEDOWN ASM 160014-03-CHT (2) BOLT 51387-06-000 (2) NUT D39-06-00B (3) WASHER-RUBBER 184541-01-CHT (2)
- 1 CABLE ASM (BLK) 133566-11-002

- 4 USE TWO NUTS HERE TO ACCOUNT FOR BATTERY HEIGHT DIFFERENCE.
- 3 SEE CHASSIS ELECTRICAL BOX ASM FOR ADDITIONAL INFORMATION.
- 2 LOCATE CHASSIS SUPPLIED GROUND CABLE, REDUCE LENGTH TO 700MM AND ADD TERMINAL 8348-01-000 TO THE CUT END.
- 1 SEE WIRING INSTL-CHASSIS FOR ADDITIONAL INFORMATION.

NOTES:

FOR ELECTRICAL TORQUE SPECIFICATIONS SEE DWG NO. 128783-01-000

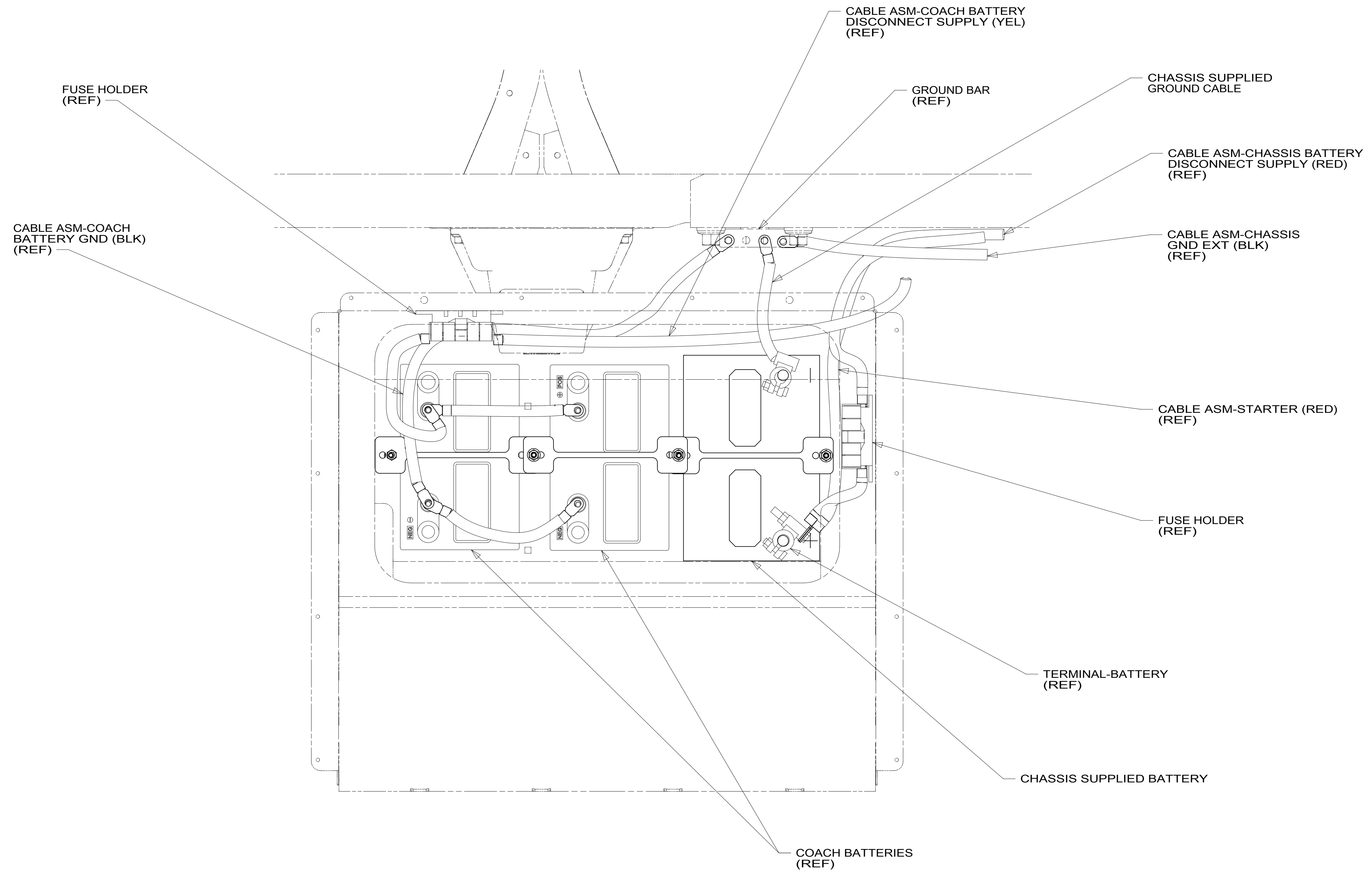
FOR ELECTRICAL CALLOUTS SEE DWG NO. 121339-01-000

265 CODES/STANDARDS-CSA/CMVSS  
1B1 CODES/STANDARDS USA

1B1 265

FIRST USED	
<b>15 A-SERIES</b>	
<b>DO NOT SCALE DRAWING</b>	
TITLE: <b>BATTERY INSTL</b>	
SHEET 2	PART NO <b>187789</b> REV

\*187789\*



VIEW CA

265 CODES/STANDARDS-CSA/CMVSS

1B1 CODES/STANDARDS USA

1B1 265

FIRST USED  
**15 A-SERIES**

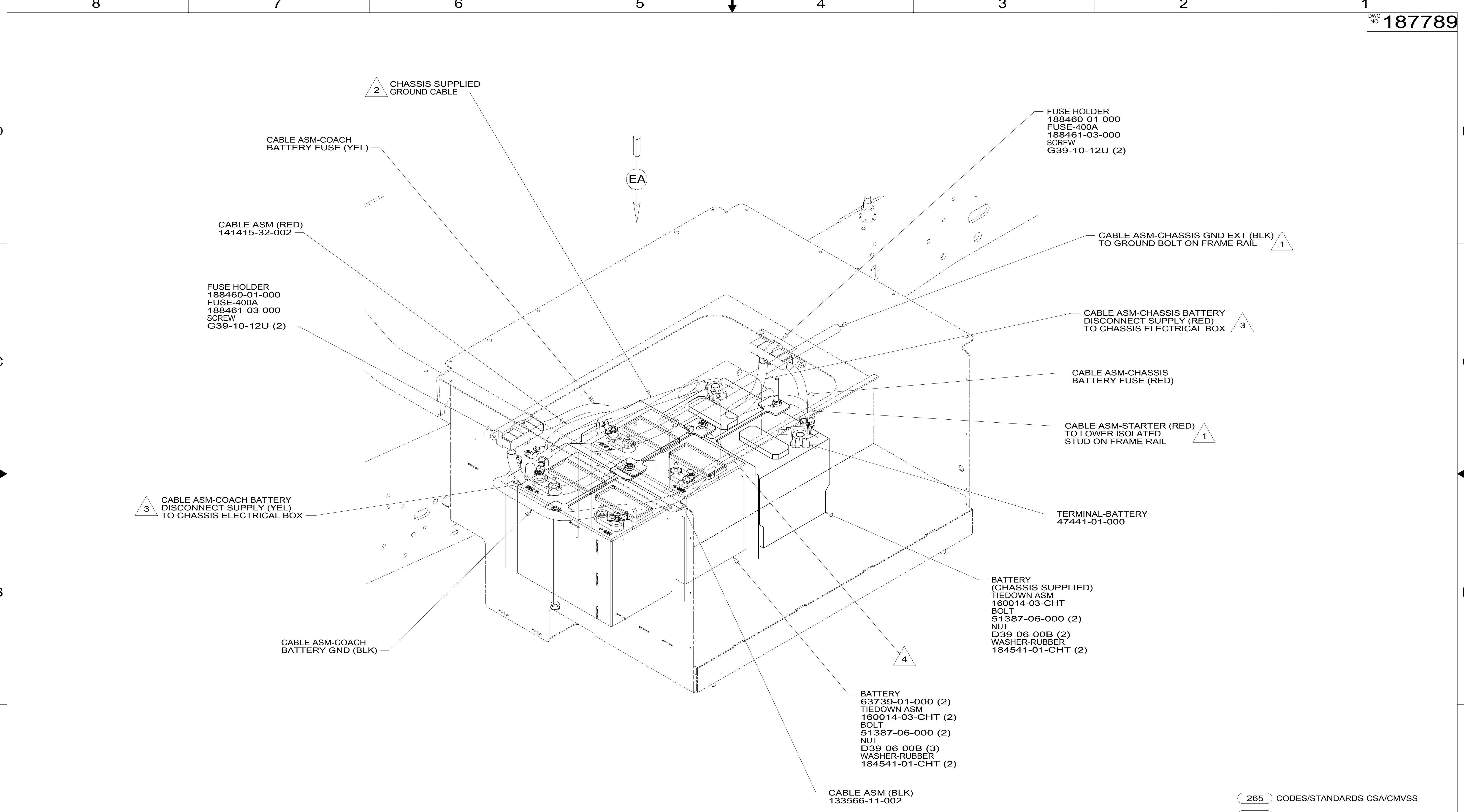
DO NOT SCALE DRAWING

TITLE:  
**BATTERY INSTL**

SHEET 3 PART NO **187789** REV

FOR ELECTRICAL TORQUE SPECIFICATIONS SEE DWG NO. 128783-01-000

X-X FOR ELECTRICAL CALLOUTS SEE DWG NO. 121339-01-000



- NOTES:**
- 4 USE TWO NUTS HERE TO ACCOUNT FOR BATTERY HEIGHT DIFFERENCE.
  - 3 SEE CHASSIS ELECTRICAL BOX ASM FOR ADDITIONAL INFORMATION.
  - 2 LOCATE CHASSIS SUPPLIED GROUND CABLE, REDUCE LENGTH TO 700MM AND ADD TERMINAL 8348-01-000 TO THE CUT END.
  - 1 SEE WIRING INSTL-CHASSIS FOR ADDITIONAL INFORMATION.

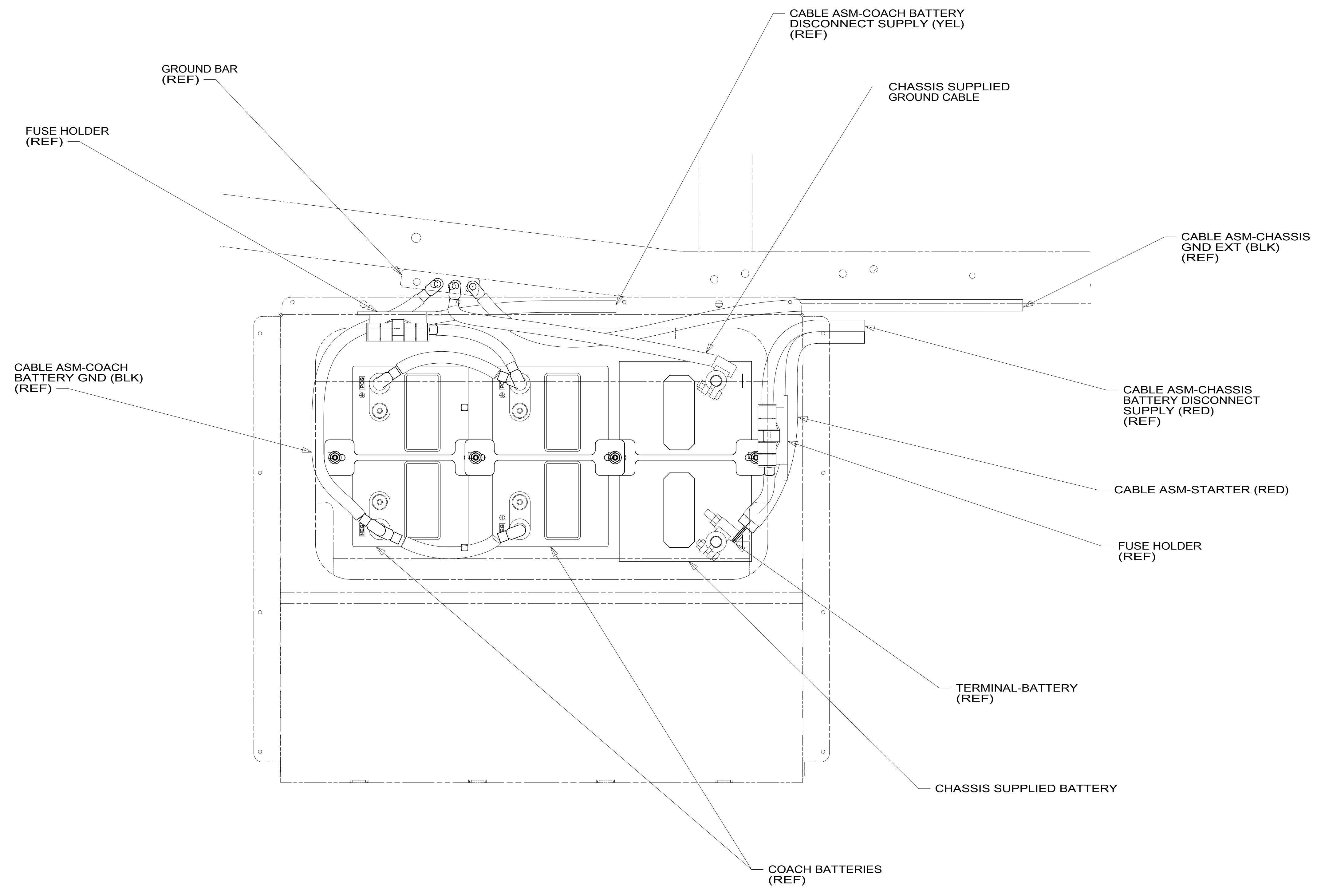
265 CODES/STANDARDS-CSA/CMVSS  
 1B1 CODES/STANDARDS USA  
 1B1 265

FOR ELECTRICAL TORQUE SPECIFICATIONS SEE DWG NO. 128783-01-000

FOR ELECTRICAL CALLOUTS SEE DWG NO. 121339-01-000

FIRST USED	
<b>15 A-SERIES</b>	
<b>DO NOT SCALE DRAWING</b>	
TITLE: <b>BATTERY INSTL</b>	
SHEET 4	PART NO <b>187789</b> REV
1 29-Sep-2015	

\*187789\*



VIEW EA

265 CODES/STANDARDS-CSA/CMVSS

1B1 CODES/STANDARDS USA

1B1 265

FIRST USED **15 A-SERIES**

DO NOT SCALE DRAWING

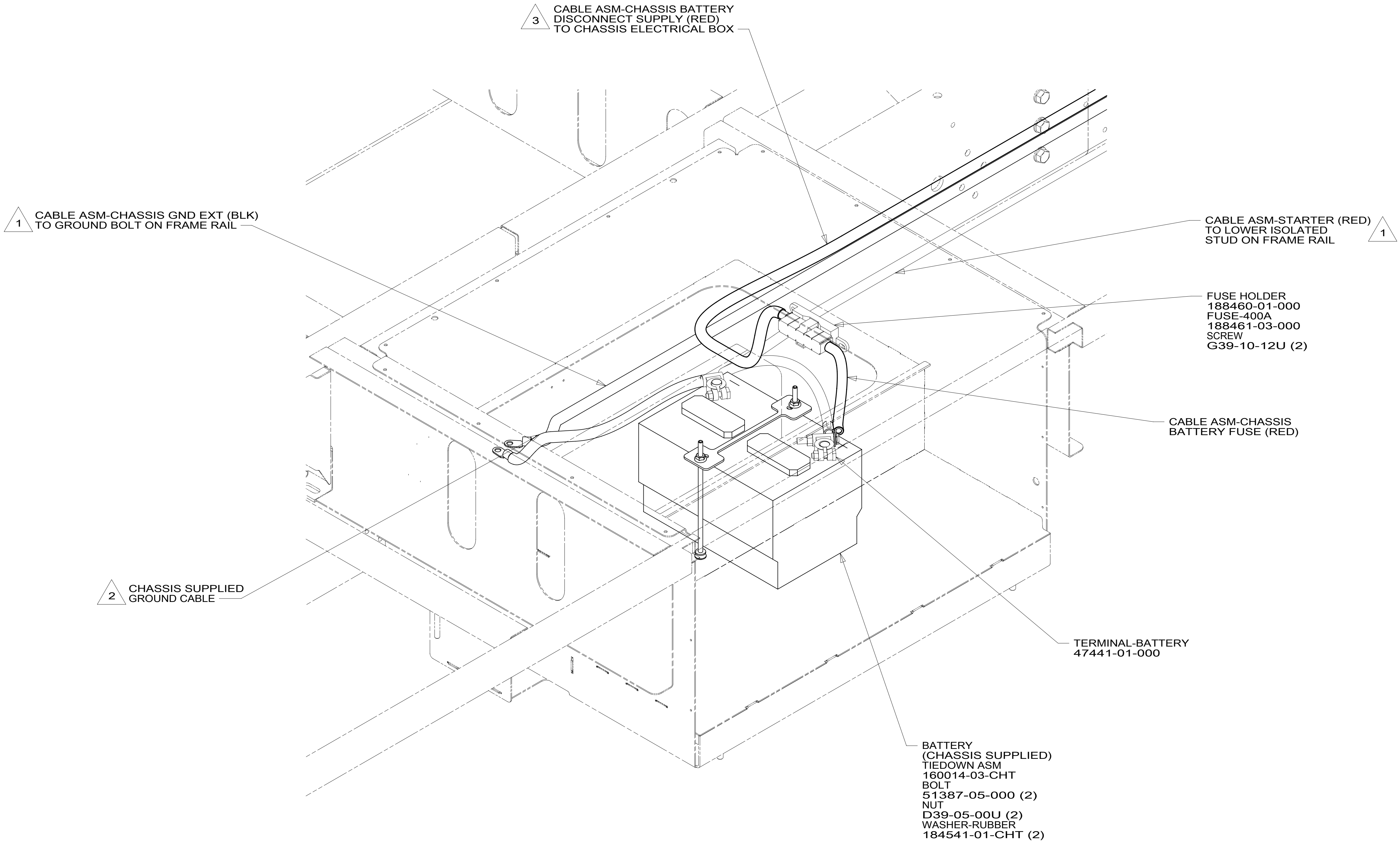
TITLE: **BATTERY INSTL**

SHEET 5 PART NO **187789** REV

FOR ELECTRICAL TORQUE SPECIFICATIONS SEE DWG NO. 128783-01-000

FOR ELECTRICAL CALLOUTS SEE DWG NO. 121339-01-000

\*187789\*



- 3 SEE CHASSIS ELECTRICAL BOX ASM FOR ADDITIONAL INFORMATION.
- 2 LOCATE CHASSIS SUPPLIED GROUND CABLE, REDUCE LENGTH TO 700MM AND ADD TERMINAL 8348-01-000 TO THE CUT END.
- 1 SEE WIRING INSTL-CHASSIS FOR ADDITIONAL INFORMATION.

NOTES:

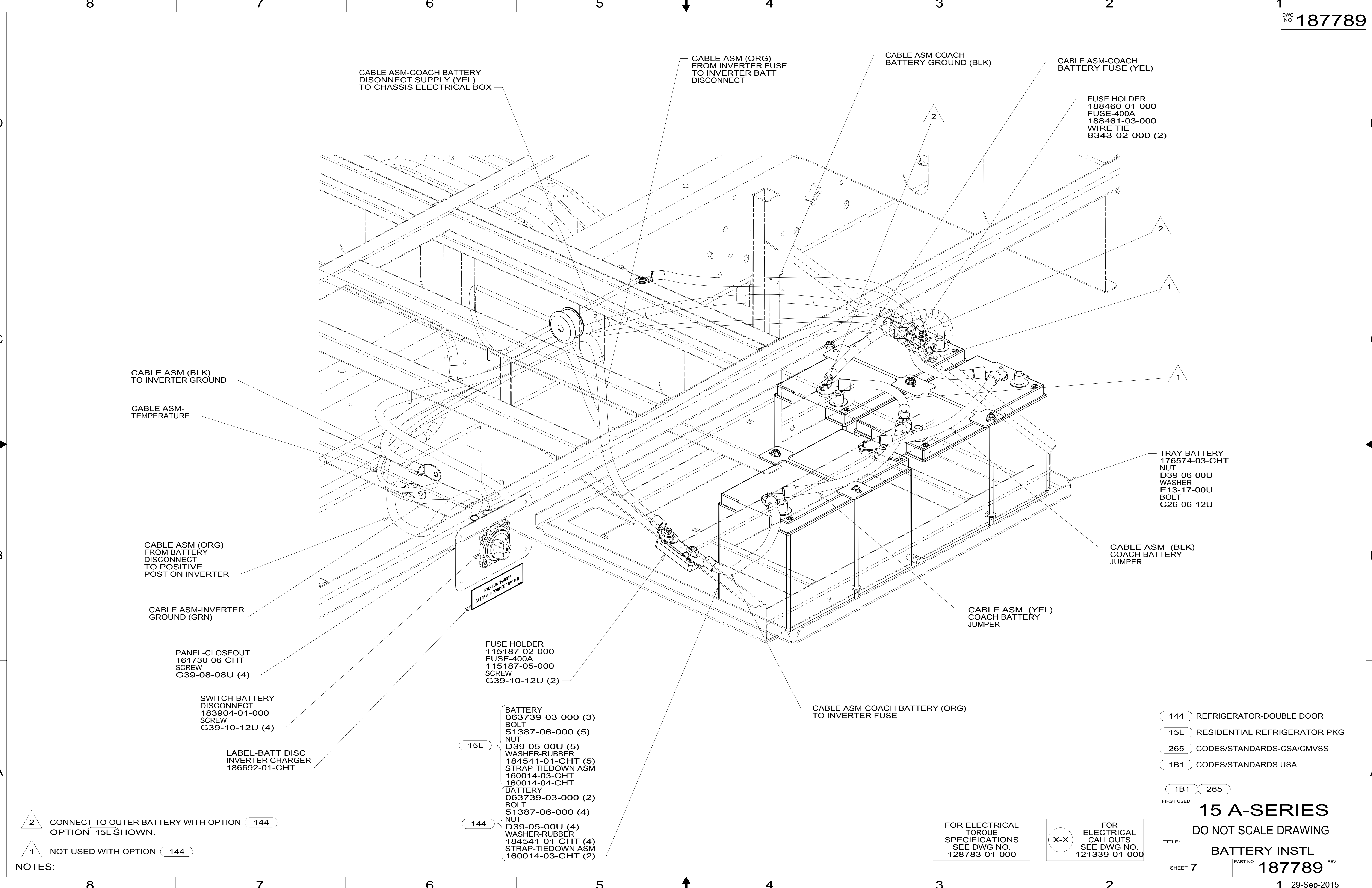
FOR ELECTRICAL TORQUE SPECIFICATIONS SEE DWG NO. 128783-01-000

FOR ELECTRICAL CALLOUTS SEE DWG NO. 121339-01-000

265 CODES/STANDARDS-CSA/CMVSS  
 1B1 CODES/STANDARDS USA  
 1B1 265

FIRST USED	
<b>15 A-SERIES</b>	
<b>DO NOT SCALE DRAWING</b>	
TITLE: <b>BATTERY INSTL</b>	
SHEET 6	PART NO <b>187789</b> REV

\*187789\*



2 CONNECT TO OUTER BATTERY WITH OPTION 144  
 OPTION 15L SHOWN.

1 NOT USED WITH OPTION 144

- 15L BATTERY 063739-03-000 (3)  
 BOLT 51387-06-000 (5)  
 NUT D39-05-00U (5)  
 WASHER-RUBBER 184541-01-CHT (5)  
 STRAP-TIEDOWN ASM 160014-03-CHT (2)  
 STRAP-TIEDOWN ASM 160014-04-CHT (2)
- 144 BATTERY 063739-03-000 (2)  
 BOLT 51387-06-000 (4)  
 NUT D39-05-00U (4)  
 WASHER-RUBBER 184541-01-CHT (4)  
 STRAP-TIEDOWN ASM 160014-03-CHT (2)  
 STRAP-TIEDOWN ASM 160014-04-CHT (2)

- 144 REFRIGERATOR-DOUBLE DOOR
- 15L RESIDENTIAL REFRIGERATOR PKG
- 265 CODES/STANDARDS-CSA/CMVSS
- 1B1 CODES/STANDARDS USA

1B1 265

FIRST USED

**15 A-SERIES**

DO NOT SCALE DRAWING

TITLE: **BATTERY INSTL**

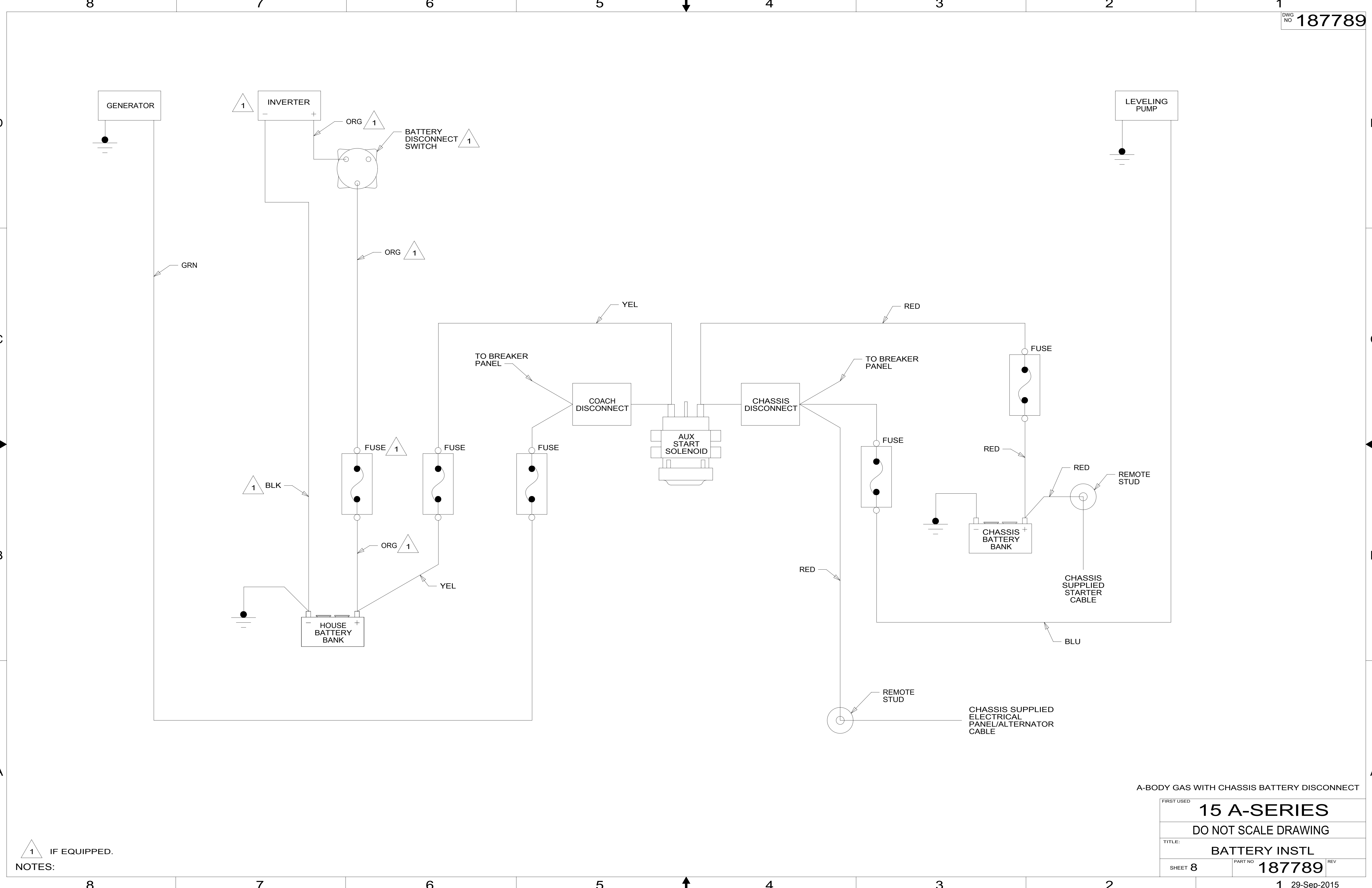
SHEET 7 PART NO **187789** REV

1 29-Sep-2015

FOR ELECTRICAL TORQUE SPECIFICATIONS SEE DWG NO. 128783-01-000

X-X FOR ELECTRICAL CALLOUTS SEE DWG NO. 121339-01-000

\*187789\*



NOTES:  
 1 IF EQUIPPED.

A-BODY GAS WITH CHASSIS BATTERY DISCONNECT

FIRST USED	<b>15 A-SERIES</b>		
TITLE:	DO NOT SCALE DRAWING		
	<b>BATTERY INSTL</b>		
SHEET 8	PART NO	<b>187789</b>	REV

\*187789\*